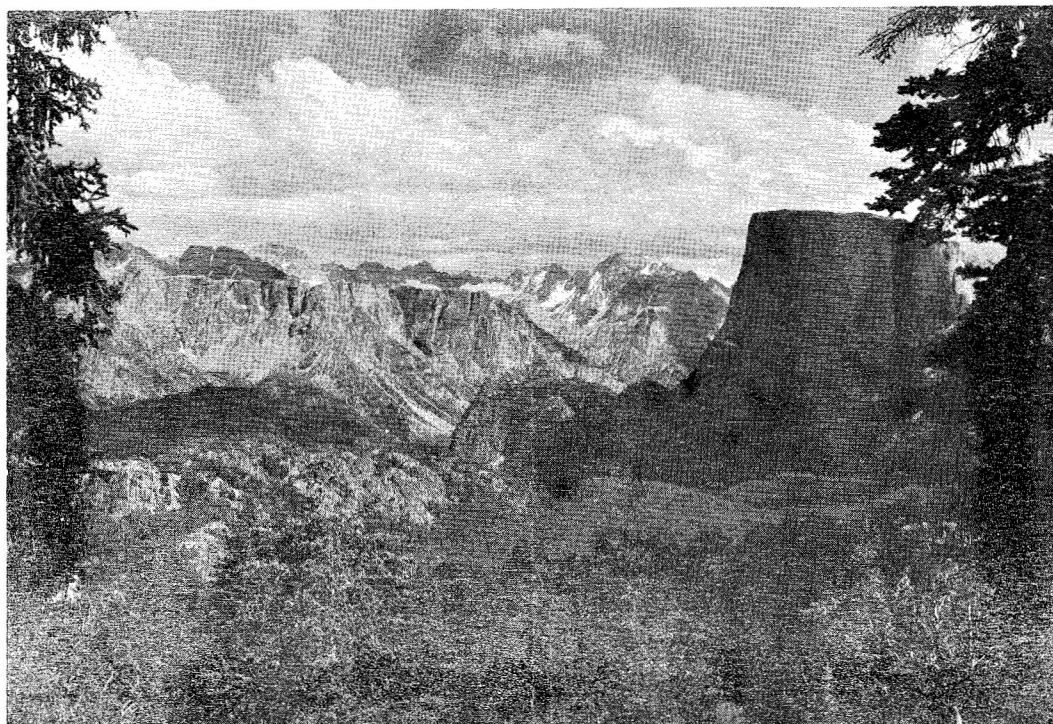


Feb 1961

The Rambler



Official Publication of

THE WASATCH MOUNTAIN CLUB

Club Headquarters: 425 South 8th West, Salt Lake City, Utah

Lodge: Brighton, Utah

Telephone EM 3-7150

BOARD OF DIRECTORS

CAL GIDDINGS, <i>President</i>	AM 5-3459
DALE GREEN, <i>Vice-President</i>	CR 7-6417
VERA VanTONGEL, <i>Secretary</i>	EM 3-0579
JOHN MacDUFF, <i>Treasurer</i>	HU 7-7188
DALE GREEN, <i>Commissary</i>	CR 7-6417
AUSTIN WAHRHAFTIG, <i>Conservation</i>	EL 9-4454
BOB J. WRIGHT, <i>Entertainment and Recreation</i>	EL 5-2453
DAVE SUNDSTROM, <i>Lodge</i>	EM 4-6143
TERRY AHEARN, <i>Membership</i>	CR 8-8383
DICK BELL, <i>Mountaineering</i>	AM 9-4555
CLARE SUNDWALL, <i>Publication</i>	EL 5-1190
DICK HILLS, <i>Publicity</i>	IN 6-1534
BRUCE CHRISTENSEN, <i>Trails</i>	CR 7-1618
VERN LE FEBRE, <i>Trips and Outings</i>	EM 3-3039

TRIP SCHEDULE
December, 1961

- December 2,3 - - Swiss Weekend in the Wasatch. Drop in after skiing and stay for supper. Saturday evening and supper - \$1.25. Overnight free. Breakfast 50¢ for members, 75¢ for guests. Register by 6 p.m. Friday, December 1. EM 3-7150.
- December 10 - - Gad Valley Ski Tour. Meet at the base of Wildcat Lift, Alta at 9:30 a.m. Bring skins, lunch. Leader, Cal Giddings. Register by 6 p.m. Friday, December 8. EM 3-7150.
- December 16,17 - Christmas Party at the Lodge. Saturday night, 8 p.m. The Board will be in charge. This is the special party of the year restricted to members, and their spouses or dates, only. This party will also celebrate the founding of the Wasatch Mountain Club. An invitation is extended to our Life members to plan to be our guests this evening. Dinner (and dancing if you like) by the light of the Christmas tree. Bring 50¢ gift to put by the tree. We'll exchange them later and have lots of fun. Register by 6 p.m. Thursday, December 14. EM 3-7150.
- December 24 - - White Pine Ski Tour. Take a rest from your Christmas present wrapping. Meet at the base of Wildcat Lift, Alta at 9:30 a.m. Bring skins, lunch. Register by 6 p.m. Friday, December 22. EM 3-7150.
- December 31 - - American Fork Ski Tour. Meet at base of Wildcat Lift, Alta at 9:30 a.m. Transportation details to be arranged. Bring skins, lunch. Register by 6 p.m. Friday, December 29. EM 3-7150.
- New Year's Eve. No special party planned. However, the Lodge will be available for members who may wish to use it. Call Lodge Director Dave Sundstrom to make arrangements.
- January 7 - - - Ski Alta. An After Ski Social will be planned.

TRIPS AND OUTINGS

This is a switch! We had a couple hikes snowed out. Instead of the Ferguson Canyon hike Bruce and Cal took a cross country ski trip down Gad Valley from Alta. They said it was a beautiful one under blue skies. There was a one hour traverse to the head of Gad Valley and then a slick two hours down to the road. So, this is our report on the scheduled hikes.

Logan Cave, Nov. 12 by Dick Hills

A rather small but snappy group departed at 7:15 a.m. from Wasatch Springs to explore the depths of the earth at Logan Cave. Earl Hansen was kind enough to drive his station wagon and after a brief stop in Bountiful to pick up Earl Peterson we were on our way. We arrived at the cave at 9:15 a.m. stepping out of the car into the crisp morning air. Fellow members Clix Byrne and Harold Bingham with guest Carol Kent were to meet us there. After a wait we decided to go into the cave. Unbeknown to us they arrived about an hour later and did their exploring with ghoulish masks.

At the entrance we noticed that the old wooden ladder had finally been used for a bon fire. We soon left behind the last reflection of day-light and found ourselves walking along tomb-like corridors. The underground river was low enough that by straddling and hopping we were able to procede into the cave without the usual dunking. We also investigated a side passage, and there found beautiful decorations of stalagtites, stalagmites, crystals, gypsum and cauliflower. Near the end of the passage we were sure we had found the lost city of Atlantis with its dinasours.

We were ruluctant to leave this other world, but leave we must. Day-light was reached at 2:30 p.m. and from then on it was a short trip home.

General Membership Meeting, November 16 Comments by Austin Wahraftig.

The Club had a very interesting and informative discussion at this meeting. Our speaker, Julian Thomas, District Forest Ranger for the Salt Lake Ranger District of the Wasatch National Forest, knows this

(continued)

country well. A native of Heber Valley and a graduate of the USU, he has been with the Forest Service since 1937 of which the last four years has been in this area of the Wasatch Forest. He talked briefly on the early history of the Forest Service in the United States and how the initial need of the settlers to exploit the land as rapidly as possible in order to exist has had to be replaced by the need to conserve the land, now no longer "limitless", if we are to continue to exist.

He then displayed maps of the Salt Lake Ranger District (from American Fork-Little Cottonwood divide on the South to the City Creek-Bountiful Canyon divide on the North) on which were shown areas that might be suitable for recreational development. This member was surprised by the large amount of land, essentially the land about Alta, Brighton, and most of Parley's Canyon, which is privately owned. The Forest Service, we were told, has absolutely no control over the use of these lands; we must look to proper zoning by the County Supervisors to prevent large areas near Brighton from becoming crowded with tiny cabins on postage stamp size lots.

Mr. Thomas stated the Forest Service is under tremendous pressure to develop additional picnic area. To do this, additional areas will have to be developed and made accessible by road. The Forest Service hopes in its new areas to keep the tables better separated so that the population density will not be such as to kill every plant and small tree as it has been at Storm Mountain. The expected increase in population in the Salt Lake City area in the next twenty years or so will require many of the side canyons now in a near natural state to be developed.

At this time, Julian Thomas, either a very bold man or unaware of the feelings of Mountain Club Members (or both) proposed he answer questions for a short while. The discussion which followed was extremely vigorous and lasted for nearly an hour. Probably the most important question had to do with the meaning of "develop for recreational use." It would seem that this term is all inclusive in that it can mean anything from the construction of a trail, or sanitary facilities at a campsite remotely accessible, to motels

(continued)

and resorts with associated restaurants and stores with roads and garbage dumps.

The main expansion on Forest Service lands foreseen by Ranger Thomas was of picnic areas. He stated they did all they could on the trails, but his trail funds, amounting to about \$500 per year, were completely inadequate to maintain existing trails without constructing new ones.

I believe most of us left the meeting with two ideas. First, the Forest Service people are our allies in conservation. We will of course differ in some detail but should not let this cause us to overlook the far more important areas of agreement. Secondly, we have as a Club been very lax in not letting our views be more widely known. The Forest Service in its "recreational development" must listen to all the Public. There is constant pressure from those seeking a development or a grazing permit that will fatten their pocketbook. The viewpoint of the WMC members will be heard only if we, too, exact pressure. We hope to do better in the future, starting now.

CLUB NEWS

Dail Ogden has accepted appointment to complete the term for Commissary Director. Dale Green, who was filling the position, moved over to the Membership post vacated by Terry Ahearn because of the press of business. Follow? Anyway, it is a pleasure to welcome Dail to the Board of Directors and his willingness to carry on this work for the Club is appreciated.

A couple reminders:

1. Contact Dale Green if you have any prospective members. He will be glad to follow up by sending out a Rambler to show our activities and make personal contact concerning membership.
2. Don't forget to send in your \$3.00 half year dues to Treasurer John MacDuff. For out-of-Staters this will be \$1.00. Please dis-regard this reminder if you have already sent in your remittance.

(continued)

This early skiing season is finding many of our members enjoying the slopes. Jim and Elfrieda Shane have been very much in evidence; Wenonah McGhan and Janet Christensen has not only been skiing beautifully but put in part-time hours at the Watson Shelter; Jinny Winkle and the TerryAhearn's were glimpsed at the Watson Shelter; Dave Sundstrom and John MacDuff were enjoying the spring-like skiing; Dean Burnham is again on the teaching staff at Alta and Bud Temple joins him there on the weekends; Dordy Wright was up from Arizona for a visit and provided a note of style with her interesting black parka with white fur collar and cuffs. Dick Saville was on hand at the top of Wildcat lift. Hello's were sent back to Virginia who stayed home in Washington. There was a fleeting sight of Charles and Emily Hall; and Jim Macey as he started down a run. Pearl Tate waited for the snowy day to start skiing. Dail Ogden and June Pitkanen stopped in for a cup of coffee after coming cross country from Brighton with the group under John MacDuff's guidance. If you haven't been skiing yet, come on up. There will be plenty of Wamoc members around.

* * * * *

CIRCLE DECEMBER 16 FOR THE CHRISTMAS PARTY

* * * * *

IMPORTANT NOTE: The typist left a small part out of the TRIPS AND OUTINGS.

December 16, 17 - Christmas Party at the Lodge

Sunday Morning there will be cross country trip to Snake Creek Hut, or to where it once stood. Leave from the Lodge at about 9:30 a.m.