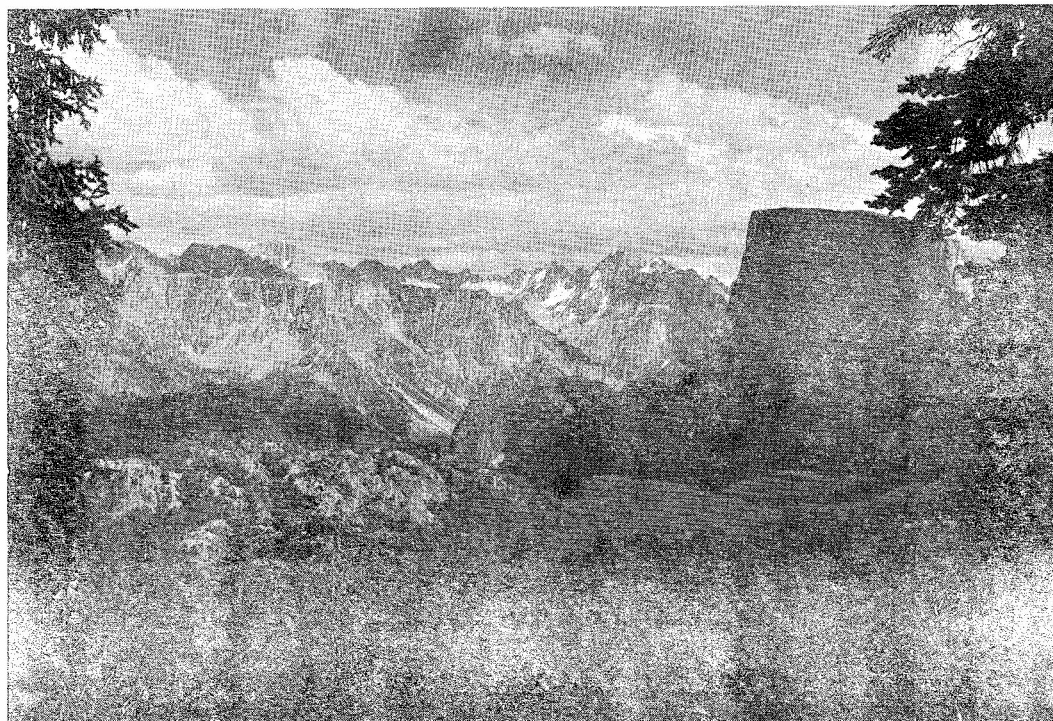


The Rambler



May 62

Official Publication of

THE WASATCH MOUNTAIN CLUB

Club Headquarters: 425 South 8th West, Salt Lake City, Utah

Lodge: Brighton, Utah

Telephone EM 3-7150

BOARD OF DIRECTORS

CAL GIDDINGS, <i>President</i>	AM 5-3459
DALE GREEN, <i>Vice-President</i>	CR 7-6417
VERA VanTONGEL, <i>Secretary</i>	EM 3-0579
JOHN MacDUFF, <i>Treasurer</i>	HU 7-7188
DALE GREEN, <i>Commissary</i>	CR 7-6417
AUSTIN WAHRHAFTIG, <i>Conservation</i>	EL 9-4454
BOB J. WRIGHT, <i>Entertainment and Recreation</i>	EL 5-2453
DAVE SUNDSTROM, <i>Lodge</i>	EM 4-6143
TERRY AHEARN, <i>Membership</i>	CR 8-8383
DICK BELL, <i>Mountaineering</i>	AM 9-4555
CLARE SUNDWALL, <i>Publication</i>	EL 5-1190
DICK HILLS, <i>Publicity</i>	IN 6-1534
BRUCE CHRISTENSEN, <i>Trails</i>	CR 7-1618
VERN LE FEBRE, <i>Trips and Outings</i>	EM 3-3039

TRIP SCHEDULE

May, 1962

- May 3- - - - - Rock Climbing at Pete's Rock. After work.
Come for instruction and practice.
- May 6- - - - - Mt. Olympus. Leader, John MacDuff. There will be
two groups: One to climb the Ridge, and one to
follow the trail. Meet at Pete's rock at 7 a.m.
Bring lunch, canteen, hiking shoes. Register by
6 p.m. May 4, EM 3-7150.
- May 10- - - - - Rock Climbing at Pete's Rock. After work.
- May 12- - - - - Mt. Aire A short Saturday hike. Mt. Aire is north
of Mill Creek Canyon, about 6 miles east of the
Canyon's mouth. It is only a 2,000 foot climb but
has a nice view from the top. Leave at 8 a.m. from
the Finnlandia parking lot at 39th south and Wasatch.
We should be back by noon. Leader, Dale Green.
Register by 6 pm. Friday, April 11. EM 3-7150.
- May 13- - - - - Work Party on the Boats. This is preparation for the
San Juan River Trip. An important event! Those
planning on the trip should plan to be at this
party. Meet at Dale Green's, 4230 Soverign Way,
at noon, Leader, John MacDuff.
- May 17- - - - - Rock Climbing at Pete's Rock. After work.
- May 19- - - - - Work Party on the Boats. Again at Dale Green's,
4230 Soverign Way. Meet there at noon. Final work
must be completed. Leader, John MacDuff.
- May 20- - - - - Climb Mt. Deseret. Approximately 40 miles west of
the Oquirrh range. Ice and snow climbing. Trem-
endous view from the top. Bring canteen, lunch,
camera, binocular, good boots. Leave from Club
Headquarters, 425 So. 8th West, at 6:30 a.m.
Register by 6 p.m. Friday, May 18. EM 3-7150
Leader, Vern LeFebvre.

- May 21- - - - - Rock Climbing at Pete's Rock. After work.
- May 25 - 30- - - San Juan River Trip. Leaders, John MacDuff, Carl Bauer. Leave by bus approximately 6:30 from Lewis Bros. Stage depot. 360 So. West Temple. There will be overnight bus ride to Mexican Hat, where the Club will serve breakfast before getting on the River. Bring commissary for four days on the river. Return to Salt Lake on the 30th. Expense for the trip will be approximately \$25 to \$30 per club member according to sign up. (See Club Notes for fee for any non-member). Please remit amount to John MacDuff by May 19.
- May 27- - - - - Rock Climbing at Storm Mountain. 9:30 a.m. Training in technique. Meet at Storm Mt. at 9:30 a.m. Bring picnic for a get together afterwards. Friends and family are invited to the picnic. Register by 6 p.m. May 25. EM 3-7150.
- May 31- - - - - Rock Climbing at Storm Mountain. After work session.
- June 2- - - - - Work Party on Boats. Preparation for the second San Juan trip. Check with Club Headquarters to see where the boats are stored.
- June 3- - - - - Work Party at the Lodge. Leader Dave Sundstrom. Lots of spring cleaning to do. Shoveling, polishing, repairs. Dinner for workers. Register by 6 p.m. Friday, June 1. EM 3-7150
- June 7- - - - - Rock Climbing at Storm Mountain.
- June 9 - 16- - - Second San Juan River Trip. A little longer for those who can spend more time. Leaders: Vern LeFebre, Gail Dick.

TRIPS AND OUTINGS

Cardiff Pass and Mill D Tour

by Vern LeFebre

The climb to Cardiff Pass was pleasant and uneventful. Everyone got there thirsty and hot. Approximately one hour was spent on top of the pass resting, drinking, eating, and commenting on the various beauties of the scenes around us. Skiing down to the bottom of Big Cottonwood Canyon by way of Mill D Canyon was accomplished successfully. The snow at the top of the canyon was hard like a rock - similar to that of Alta. Further down, it became soft and sticky. Halfway down the canyon we met Dave Sundstrom who had come up from Big Cottonwood Canyon. He was waiting for us in the woods, without much clothing as usual. All in all, it may be said the trip was a spectacular success.

Along on the tour:

Ann Dick	Priscilla Maiden
Kip and Bill Wallace	Laird Crocker
John MacDuff	Bob Woody
Dick Hills	Roy Willie
Dave Sundstrom	Howard Seigel
Emily Hall	Vern LeFebre

Granduer Peak- - - - - April 15

by Dale Green

Twenty five eager Mountain Clubbers and guests turned out for an assault on Grandeur (Delsen) Peak between Parley's and Mill Creek Canyons. A few of the more ambitious hikers carried up forty pounds of sand and cement and a large rural mail box. The mail box was cemented into place on the summit and a note book for a register was enclosed. Those who signed their names at the top were:

Art and Betty Whitehead	Dave Sundstrom
John MacDuff	Al Wickham
Phil Denny and Wife	Al Howard
Bill Fitzpatrick	Dale Green
Denny Huffman	Max McDowell
Earl Hansen, Son, and Dog "Stormy"	Dail Ogden
Leon Edwards	Dave Cook
Joe Gates	Bob Woody
Dick Hills	

Tom Chamberlain (also along were: Eve Sumner, Vern LeFebre,
Sally Coltrin, and Jim McElroy)

Election Meeting - - - - -April 18

by Clare Sundwall

A good representation of members turned out to make this a very successful evening. President Cal Giddings discussed pertinent Club activities and future plans. In the ballot for members of the Board of Directors, the following were elected to office:

Cal Giddings	Connie Clemens
Dale Green	Earl Hansen
John MacDuff	Dick Hills
Clare Sundwall	Tom Stevenson
Austin Wahraftig	Alexis Kelners
Dave Sundstrom	Wolfe Snyder
Bruce Christensen	

Carl Bauer was elected to serve on the Board of Trustees in the place of O'Dell Peterson whose term expired. Other members of the Board are: Janet Christensen, Harold Goodro, and Don Pearson.

An interesting conclusion to the evening was provided by Vern LeFebre who showed slides of the Wind River Expedition, and Alexis Kelners who had movies of the Expedition.

CLUB NOTES

A note from Pat Heaney says that she and Ray are now settled in West Los Angeles. Their hiking is more or less taken up in walking through parks. They hope to join us on some of our expeditions in the future.

Dorde Wright also sent a note. She and Bob have found plenty to do in Arizona including skiing at Flagstaff and visiting the Grand Falls of the Little Colorado. They are looking forward to the possibility of a river trip.

Virginia and Dick Saville are back in town. Dick is doing quite a lot of traveling out of town, but we hope to see them soon.

New Members:

Kenneth Trammell
135 A East 3rd St.
Dugway, Utah Tel. Dugway 2382

Leon Edwards
164 S. 13th E.
Salt Lake City EM 3-0452

Jack Thacker
615 K Street
Salt Lake City EL 5-2146

Ron Smith
3017 St. Mary's Circle
Salt Lake City, Utah HU 4-9392

Change of Address:

John MacDuff
2872 Louise Avenue
Salt Lake City, Utah

Connie Clemens
82 Zane Ave.
Salt Lake City 363-5965

Pat and Ray Heaney
1526 Corinth Ave.
Apt. 37
West Los Angeles, California

Our President Cal Giddings had his picture featured in the Deseret News, April 23, along with Senator Bennett and others in connection with hearings on the Canyon Lands National Parks. We are happy that our viewpoints were so ably expressed by Cal and received such notice.

Since dues for the new fiscal year and our major summer trips will soon be coming up, we feel it would be wise to print our By-Law #24 covering these items:

By-Law #24: The annual dues shall be \$6.00. The fiscal year shall be from May 1st to the following April 30th, inclusive. From May 1st to June 31st shall be a period of grace during which time full membership privileges will be allowed to the previous year's members, except that only fully paid members shall be eligible for major club functions."

River trips are major club functions. Therefore we urge anyone interested in these trips to maintain a paid up membership. In some instances, we do allow non-members on the river trips: friends of members or potential members. However, the cost will be 50% more, or \$15.00 whichever is greater. If the person obtains a membership after the trip, a limited amount will be applied to initiation fee and dues.