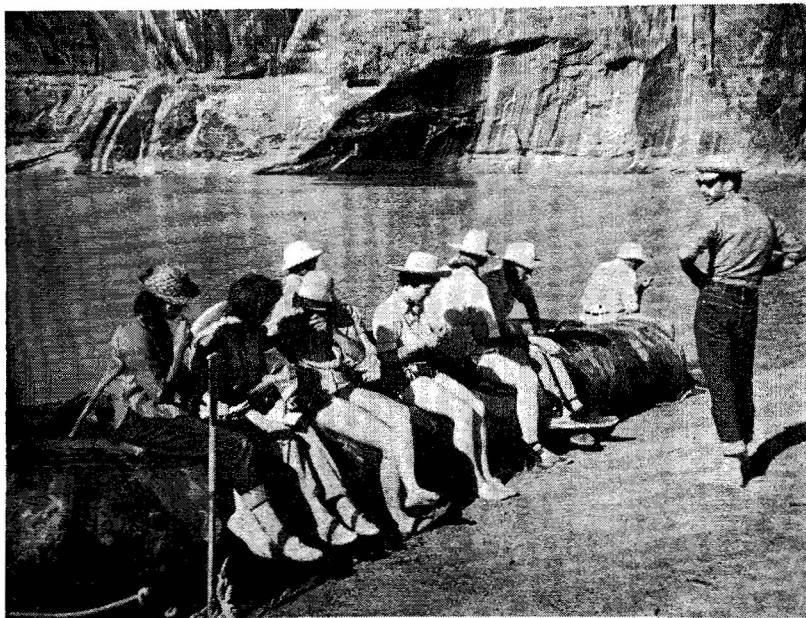


# The Rambler



*Official Publication of*

## THE WASATCH MOUNTAIN CLUB

Club Headquarters: 425 South 8th West, Salt Lake City, Utah

Lodge: Brighton, Utah

Telephone EM 3-7150

DALE GREEN, <i>President</i> .....	CR 7-6417
CAL GIDDINGS, <i>Vice President</i> .....	AM 5-3459
CONNIE CLEMENS, <i>Secretary</i> .....	363-5965
WOLF SNYDER, <i>Treasurer</i> .....	AM 6-1374
BRUCE CHRISTENSEN, <i>Boating</i> .....	CR 7-1618
AUSTIN WAHRAFTIG, <i>Conservation</i> .....	EL 9-4454
JOHN MacDUFF, <i>Entertainment &amp; Recreation</i> .....	HU 7-7188
DAVE SUNDSTROM, <i>Lodge</i> .....	EM 4-6143
EARL HANSEN, <i>Membership</i> .....	HU 4-3174
TOM STEVENSON, <i>Mountaineering</i> .....	364-5268
CLARE DAVIS, <i>Publications</i> .....	EL 5-1190
ALEXIS KELNERS, <i>Publicity</i> .....	359-5387
DICK HILLS, <i>Trails and Transportation</i> .....	IN 6-1534
CAL GIDDINGS, <i>Trips and Outings</i> .....	AM 5-3459

## TRIP SCHEDULE

September, 1962

September 1 thru 3 - -Snake River. Boat trip and camping. See details in August Rambler.

September 6 - - - - -Rock Climbing at Storm Mountain. Tom Stevenson leader.

September 8 - - - - -Rock Climbing at Storm Mountain. With the evenings getting shorter, this Saturday trip will provide a rare opportunity to try some of the longer climbs in the Storm Mountain area. Meet at 9:30 a.m. at Storm Mountain. Bring your own climbing equipment, if possible. Leader, Tom Stevenson.

September 9- - - - Lone Peak. This hike is only for those in top condition. Harold Goodro, just returned from National Guard duty, will lead this trip. The approach will be via the Corner Canyon road rather than through Bell's canyon. This is a worthwhile variation, passing through the spectacular western cirque of Lone Peak. Meet at 7 a.m. in the Safeway parking lot at 62nd South and Highland Drive. Bring lunch and canteen. Register by 5 p.m. Saturday, EM 3-7150.

September 13- - - - Rock Climbing at Storm Mountain. Tom Stevenson, leader.

September 15- - - - Mt. Majestic. A short and pleasant Saturday hike near our Brighton Lodge headquarters. Meet at the Lodge at 9:30 a.m. Leader, Dave Sundstrom. If you want to stay overnight at the Lodge you can make arrangements with Save. Register by 6 p.m. Friday, EM 3-7150.

September 19- - - - General Membership Meeting. We will discuss some current Club business. (See elsewhere in this Rambler) and see slides of recent club trips. Bring your favorite slides, limited to one dozen, so that we can re-live our favorite adventures. Meeting time-8 p.m. at the Utah Power and Light Co. 6th South between 6th and 7th East.

- September 16- - - Box Elder Peak. From this peak one obtains a view of Utah Valley, Utah Lake, American Fork Canyon, and the massive granite ridge linking Lone Peak and the Pfeifferhorn with other spectacular peaks. The hike starts in American Canyon, and is intermediate-to-long. Meet with the leader, Dick Bell, at the Pioneer Monument ( $\frac{1}{2}$  mile south of the point-of-the-mountain prison) at 7 a.m. Register by 5 p.m. Saturday EM 3-7150.
- September 20-- - - Rock Climbing at Pete's Rock. The shortened days do not give enough evening time for climbing at Storm Mountain. Thursday evening climbing will continue at Pete's Rock until further notice. Tom Stevenson, Leader.
- September 22,23 - - Zion Narrows. Words cannot adequately describe this remarkable gorge which we will hike through for one and one half days. Even when compared with our other superlative scenic assets, this must still be regarded as an unequaled gem. The bus will discharge us at the head of the Canyon from whence we hike and wade to the evening camp. The exit, in Zion's National Park, will be reached about noon the next day. Bring food and camping equipment. Include footwear which you are willing to get wet, and which will provide good traction on the wet rocks of the creek bottom. Cost, \$15. Payment should be made to Club headquarters or to the Leader, Lee Steorts, by Tuesday, 7 p.m. September 18. Call Lee, HU 5-0073, if you desire further details. The bus will pick up the Northerners at the University Parking lot East of the Union Building, and the Southerners at the Safeway parking lot at 62nd South on Highland Drive. Departure times are 6:30 p.m. and 7:15 p.m. respectively.
- September 29- - - Hobble Creek Loop. This is one of the most interesting and scenic roads in the State, looping between Provo Canyon and Hobble Creek Canyon. The area would be beautifully embellished with fall colors at this time. Bring a picnic lunch and a car with good brakes as the descent into Hobble Creek is quite steep.

Meet at the Draper cross roads, (12300 South State street) at 10 a.m. Register by 5 p.m. Friday. Leader to be announced.

- September 30- - - - - Wood Gathering at the Lodge. That crackling fire in the fireplace in the cold of winter does not burn without wood. Bring saws, gloves, trucks, trailers, and abundant energy to the Lodge at 9 a.m. or therabouts (or stay overnight Saturday.) Free lunch, beer, and dinner for all workers. If possible register by 6 p.m. Friday, EM 3-7150 so that a menu can be planned.
- October 6- - - - - Neff's Canyon to Mill Creek Canyon. This medium-to-long hike from one canyon to another should yield a rich reward of fall colors. The lenght of the hike is roughly equivalent to the Mt. Olympus hike. Meet at 7:30 a.m. with the leader, Dale Green, at the Finlandia parking lot, 39th South on Wasatch Blvd. Register by 6 p.m. Friday, EM3-7150.
- October 7- - - - - Rock Climbing at Willard. The last major climbing session of the year. There are a number of routes of varying difficulty so you should be able to find the one which suits you. You must register and be ok'd by the Leader, Tom Stevenson, before you go. Register by 8 p.m. Friday at 364-5268. Since two or so hours are required for the drive to Willard, meeting time will be at 7:30 a.m. at Club Headquarters, 425 South 8th West. Bring your own lunch, water, and climbing equipment.

#### COMING ATTRACTIONS

- October 20 thru 22- - - - -Southern Utah Tour.  
October 27- - - - -Halloween Party.  
October 28- - - - -Mt. Olympus Via the North Face.

#### TRIPS AND OUTINGS

The Grand Tetons- - - - July 21 through 24.

The Club bus headed to the Tetons with 18 tourists aboard. Five other members came up in private cars. Cars and bus converged on the Tetons for four days of camping, climbing, river runing. Following are accounts of the climbing and the river:

Mt. Owen Climb - - - July 22  
by Dale Green

We meant to get up at 3 a.m. Sunday and be on the trail by 3:30, but we were until 4:30 getting started. Good time was made from Amphitheater Lake to the base of the large couloir that extends from the Teton Glacier to the saddle between the East Prong and Mt. Owen. When we reached the steeper portion we put on our crampons, and roped into 2 groups of 3 people. For various reasons, mainly inexperience on snow for some of the climbers, the ascent rate was slowed to a snails pace. We were soon joined by Dan Lynch, leading two Ute Alpine Club members up the same mountain. Climbing simultaneously on the rock, they soon passed us. By this time, the high clouds seen in the morning had lowered and began to look threatening. To speed the climb, we switched to the rock and soon made the saddle. The snow in the saddle was in poor condition so we skirted around to the next few pitches on the rock. The decision was then made to climb the East Ridge route instead of the hanging snowfield because of the condition of the snow. The East Ridge is rated as a Class 5 climb. After a tough pitch getting off the snow and a few friction pitches, we were standing at the base of the summit knoll, 75 feet from the top. The direct route has one key handhold on a near vertical wall about 15 feet above the base of the knob. It is large enough for both hands. The trick is to stand on your toes to reach the hold, then pull yourself up until your feet are on the same handhold. There are no other holds until you are again standing upright. The guide-book calls this a "difficult maneuver". It is!

We didn't start down until 3:30 p.m. To save time, rappels were rigged most of the way. Our descent rate turned out to be nearly as slow as on the ascent as, unfortunately, some of the party hardly knew how to clip in. A big problem was nine people in the party and ten rappel points, some a full 120 feet long. We were only half way down the couloir when darkness came. With only three people of the nine having flashlights, it took six hours in the dark to come down the same distance it took us three hours to go up in daylight. (A lesson in being well-equipped.) The clouds began to dissipate, and the moon to light the north face of the Grand Teton, as our party started back across the glacier. The nine of us stumbled into camp at 2:30 a.m. Monday morning after 22 hours of continuous climbing. Those along:

Bob Wright  
Dale Green  
Max McDowall

Tom Rees  
Scotty Imber  
Boone Newson

(Cont. next page)

Dan Lynch

Ute Alpiners: Carletta Ybargan, Garth Nelson  
(Bill Kirkpatrick and John Rose retrieved some  
ropes for us next day from the base of the  
couloir.)

The Grand Canyon of the Snake River - - July 22

by Mel Davis

Part of our four day trip to the Tetons a group of seven river rats decided to take a run through the Canyon. Early morning departure plans from the camp at Coulter Bay were completed by mid-morning. It was decided to transport the group and raft by the Club bus to the launching site. Mrs. Wright and Mrs. Ogden were to come along in Dail's V.W. and bring back the driver, John McDuff, after he had taken the bus on down to the end of the run at Alpine. Somehow, the girls and the bus got separated. We never saw them again until evening. While we were pumping up the raft, our driver was hitch-hiking back up the canyon to us.

About lunch time we cast off. We divided up our rations which consisted of a half chocolate bar each and some new-type vitamin tablets carried by Dave Sundstrom. These were dispatched in short order as we were all hungry by then.

Mal MacDuff took the point of the raft with Max Tyler and John MacDuff the right side, Dave Cook the tiller spot, Clare and I on the left, and Dave Sundstrom free lancing. The river became more narrow and active as we went along. The raft dipped into the big waves, with sheets of water coming over the front and sides. Mal was soon soaked from head to toe and enjoying every minute of it. Along a quieter section we bailed out the craft, using Dave Sundstrom's inverted sailor hat and a small tin can found in one of the raft's pockets. About halfway on the run, it was decided to let me ride in the point as this was my first river run, and I also had made some remarks about this being a tame sport. For a while the fellows tried a new sport--running the rapids while standing up. A sudden whirlpool put an end to this activity.

Approaching the narrowest, and roughest section of the rapids, we were tempted by one side which looked easier. But we

decided to head right into the center of it and were soon racing down the chute towards the first big wave. The raft ran up the wave, slid off sideways, to be caught up by the next big wave. Another wave coming off a boulder on the opposite side left us crossways to the channel. Quick action with busy paddles straightened us out in time for the last of the big waves. Soon we found that we were drifting out of the canyon. We sat and relaxed, knowing that the yelps and shouts during the rapids were normal fun-sounds made by river rats enjoying their favorite sport.

Mt. Raymond - - - - August 12  
by Dale Green

The inspiring view of Twin Peaks, Dromedary and Superior from the top of Mt. Raymond nearly took the hiker's mind off their parched throats. By the time the summit had been reached, and lunch eaten, everyone's canteen was dry. Most of the group chose to go down the Hidden Falls trail which turned out to be hot, dry, sunny and dusty. A few were gasping their last breath when water was finally reached. The party cooled off in an old mine by the stream at the falls, while Bill drove the drivers back for the cars. About half of us finished replacing vital fluids in an air-conditioned establishment at the mouth of the canyon.

Summiters:	Al Wickham	Bob Wright	Ron DeWaal
	Bill Kirkpatrick	Vern LeFebre	Connie Pierce
	Frank Zimbeaux	Mona Moeller	Ron Perla
	Ann McDonald	Boone Newsome	George Swartz
	Ron Niccoli	Gordon Taylor	Connie Clemens
	June Pitkanen	Dale Green,	Leader

Also along: Ann Barker  
Diana and Kurt Carpenter

#### CLUB NOTES

Enclosed with your Rambler this month are copies of the Constitution and by-laws of the Club. We are proposing two changes which will be voted on at the next general membership meeting on September 19. The changes are needed to provide for additional member on the Board of Directors to take charge of the bus.



Proposed amendments:

Section 9 - To increase the number on the Board of Directors from Thirteen to Fourteen.

Section 14- To increase the number of Directors required to vote for a By-Law change from eight to nine.

Also to be discussed at the membership meeting will be the feasibility of purchasing property at Alta to be used as a future Lodge site. The Board of Directors and Trustees will need your opinions, both for and against, before any action may be contemplated. Please attend.

\* \* \* \* \*

Several people have inquired where maps of the area may be obtained. The best maps that we know of may be purchased from the Public Inquireis Office of the U.S. Geological Survey, Room 437, Post Office Building. This office is open from 9 a.m. to 4:30 p.m. Detailed topographic maps of most of the Wasatch Front at a scale of  $2\frac{1}{2}$  inches to the mile are available for 30¢ apiece. Other maps of southern Utah at about 1 inch to the mile as well as the Uinta's at  $\frac{1}{2}$  inch to the mile are the same price. Also available are maps of all the National Parks including the Tetons. A map is one of the "ten essentials" that every hiker should carry.

\* \* \* \* \*

Jan and Terry Ahearn have welcomed a third member into the family -- Shawn, born July 7. Already the little fella has been out to a rock climbing session.

A big welcome back is extended to Harold Goodro, recently returned from National Guard service.

\* \* \* \* \*

We were saddened to learn of the death of George Unseld in West Virginia while visiting with cousins there. George has been a long time and faithful member of WMC. Two of the paintings in the Lodge were gifts from George, by which we will always remember him.

\* \* \* \* \*

There were floor scribbers busy at the Lodge the other weekend. Connie Clemens, Pearl Tate, Clare Davis, and Art Adams spent a good part of a saturday on knees cleaning and applying wax to the main floor. Arlene West arrived later with a buffer to finish the job. Remember the sore



knees and treat the floor gently.

The road to Brighton is open to traffic all the time now. The road is gravel, but smooth nearly all the way. The Lodge is rented over the September 8 weekend. If you are interested in use of the Lodge any other time, and a scheduled activity there is not listed, contact Lodge Director Dave Sundstrom.