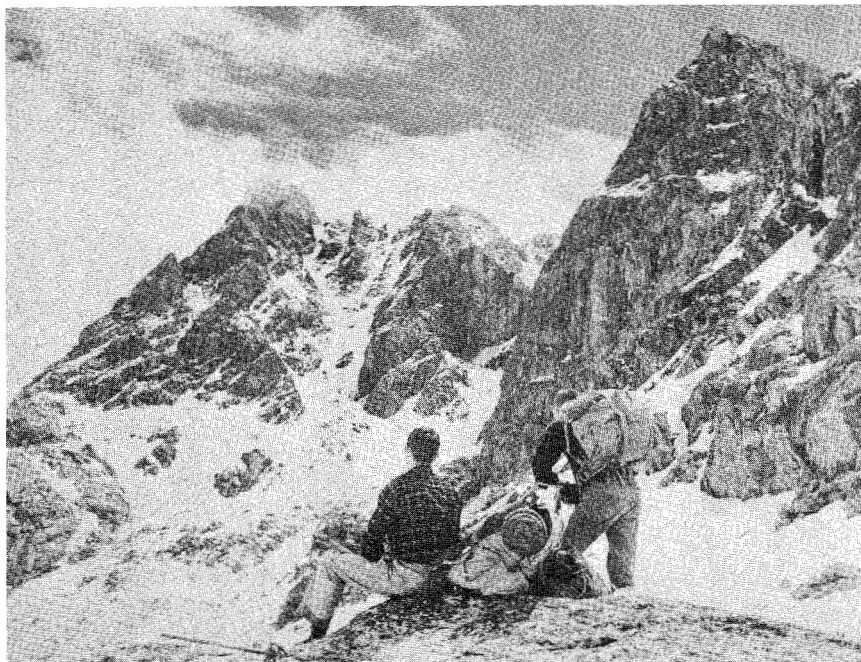


The Rambler



Official Publication of

THE WASATCH MOUNTAIN CLUB

Club Headquarters: 425 South 8th West, Salt Lake City, Utah

Lodge: Brighton, Utah

Telephone EM 3-7150

DALE GREEN, <i>President</i>	CR 7-6417
AUSTIN WAHRHAFTIG, <i>Vice President</i>	EL 9-4454
MARION OHR, <i>Secretary</i>	EM 4-6784
WOLF SNYDER, <i>Treasurer</i>	AM 6-1374
BRUCE CHRISTENSON, <i>Boating</i>	CR 7-1618
AUSTIN WAHRHAFTIG, <i>Conservation</i>	EL 9-4454
ANN McDONALD, <i>Entertainment and Recreation</i>	CR 7-0816
DAVE SUNDSTROM, <i>Lodge</i>	EM 4-6143
EARL HANSEN, <i>Membership</i>	HU 4-3174
TOM STEVENSON, <i>Mountaineering</i>	364-5268
CONNIE CLEMENS, <i>Publications</i>	363-5965
ALEXIS KELNER, <i>Publicity</i>	359-5387
JOE GATES, <i>Trails</i>	266-7826
JOHN MacDUFF, <i>Transportation</i>	HU 7-7188
DAVE COOK, <i>Trips and Outings</i>	355-4086

TRIP SCHEDULE -- August, 1963

- August 1, 8, 22, 23 -- Rock Climbing at Storm Mountain. Class will be held from 6:30 to 7:30 p.m. in the evening. Even if you don't climb, come up and enjoy the social hour after the climbing session. Leaders: Tom Stevenson and Carl Dunn.
- August 2 -- Moonlight Hike and Overnight at Lake Mary. Grandeur Peak hike in the moonlight proved so successful, a more extended version has been planned. Meet at the lodge at 7:30 p.m. ready with back pack and provisions for evening festivities and overnight camping. Leader, Ann McDonald. (Register, if possible)
- August 3 -- Lodge Open. This will be a customary children's weekend with hiking, meals, etc., planned by those participating. Register with hostess Ann Barker.
- August 4 -- Hayden Peak. The West side of the Uintas are still quite pretty even at this time of the year. The hike has been planned to begin northeast of Mirror Lake at Bud Lake and proceed up the talus slope between Hayden and Agassiz Peaks. Please register at Club Headquarters by 6:00 p.m. Saturday and meet at Stillman Bridge in Parley's Canyon at 7:00 a.m. the following morning. Leader, June Pitkanen (rating 5.0, el. 12,475)
- August 10 -- Lake Desolation. Here is a hike that is one of the club's favorites. It is rated at 5.0 when hiked by way of Bear Trap Fork, which is about three miles below the lodge. Register by Friday at 6:00 p.m. Meet at the mouth of Big Cottonwood Canyon at 8:00 a.m. Leader, Al Wickham.
- August 10 -- Lodge Open. What an ideal opportunity to get away from the heat of the city and enjoy our beautiful and cool canyons. The fee for members staying overnight is only 50 cents. Leader, June Pitkanen.
- August 11 -- Reynolds Peak. The area between Millcreek and Big Cottonwood always is pleasant to visit. Reynolds has an elevation of 9,422 and lies about one mile north of Reynolds Flat in Big Cottonwood. Even though it is a relatively short hike (rating 4.5), Dog and Desolation Lakes are within easy walking distance from the peak. Register at Club Headquarters by 6:00 p.m. Saturday. Meet at the mouth of Big Cottonwood Canyon at 8:00 a.m. Leader, Dale Green.

- August 17 -- Work Party at Lodge. Please plan to arrive about 8:00 a.m. for work that is very much needed at our lodge. We plan to lay a new floor on the porch and also in the kitchen if enough manpower is available. Please register by 6:00 p.m. Friday at headquarters. (A free lunch will be prepared for those registering). Leader, Dave Sundstrom.
- August 17 -- Lodge Open. Another one of those luscious charcoal broiled dinners is planned for this evening (club furnishes charcoal and braizer you bring your meat and food). Steve Cole has promised to provide a group of "live" folk singers as special entertainment. Leader, Janet Christiansen. (Remember, there is a small 50-cent fee for all diners to help defray the extra expenses). Come, this will be fun!
- August 17-25 -- Salmon River Trip. Once or twice a year the club plans an outing that is a week or so long. This is done primarily to accommodate members who like to do something different with their vacation time. This year, we will run a river which the club hasn't tried before. The Salmon River passes some of the most scenic areas in the state of Idaho. It runs through parts of the Nezprece and Salmon National Forests and also touches portions of the Idaho Primitive area. For some excitement near the trip's conclusion, the river flows into the Salmon River Canyon in which Carey Falls is located. This probably will be our only portage. Departure from Salt Lake City will be at 8:00 a.m. Saturday, August 17. We will leave North Fork on Sunday and spend 7 leisurely days floating and hiking in side canyons until we reach Riggins on August 24. Sunday, August 25 will be used for the return trip. All those interested in making this trip. PLEASE REGISTER BEFORE FRIDAY, AUGUST 9 at 6:00 p.m. at Club Headquarters. Also be present at the work party at John MacDuff's home (6200 South 21st East) on Saturday, August 10, at 1:00 p.m. Cost will be \$40.00 Leader, to be announced.
- August 18 -- Lone Peak by Way of Corner Canyon. This is a long hike with no climbing involved. A lunch and water should be carried since the canyon will be dry this time of year. Register the evening before by 5:00 p.m.

Meet at the Safeway parking lot at 6200 South and Highland Drive at 8:00 a.m. Leader, Boone Newson.

August 24 -- Kessler Peak. Kessler is on of the old favorite peaks on th club's schedule. It has a rating of 4.5, so there's no worry about reaching the summit. After the hike, perhaps a trip to the lodge would provide a relaxing afternoon. Meet at the mouth of Big Cottonwood Canyon at 8:00 a.m. Register at Club Headquarters by 6:00 p.m. Friday. Leader, Joe Gates.

August 24 -- Lodge Open. It's always a pleasure to break away from the heat and confusion of the city for the many comforts afforded at out lodge. Come up for the evening or stay all night. Leader, Austin Wahrhaftig.

August 31-September 2 -- Snake River Trip. "Old reliable" is scheduled again. The club's annual Labor Day trip to the Teton Country offers you an opportunity to enjoy beautiful scenery, a cooler climate, and a variety of activities. The main entertainment will be a leisurely boat ride on the Snake from Moran Dam to Palisades Reservoir. There also will be planned practices in snow and ice techniques for climbers. A work party will be held at John MacDuff's home at 6:00 p.m. on Tuesday, August 27. Please register at Club Headquarters by Saturday, August 24. The bus will leave from the U of U Union Building at 7:30 p.m. Friday, August 30. The fee for boating and transportation will be \$12.00. Cost for climbers, \$8.00.

August 31-September 2 -- Lodge Open. As first weekend of the month, this is children's weekend, so why not bring up the whole family. No leader has been assigned, so be sure to register at headquarters for information on when it will be open.

September 2 -- Box Elder Peak from American Fork Canyon. This hike will give those not able to leave the valley over the holidays a chance to hike in the mountains of Utah County. From the summit, one is able to see a great portion of Utah valley and surrounding mountains. Register by 6:00 p.m. at Club headquarters, August 31. Meet at Harmons (3900 South State) at 8:00 a.m. Leader, to be announced. (rating 9.0 el. 11,101)

September 7 -- Western Party! (by popular request) Yes, it's time to get out your ten gallon hat and cowboy boots for another "night on the town." There will be gamblin, Las Vegas style (using special WMC currency) and some good food.

Mix for drinks will be sold, but no need to BYOL, since some generous members have volunteered to furnish the "strong stuff" to go with you mix. No one under 21 allowed and there will be a limit of two guests per member. Meet at the lodge at 8:00 p.m. and be sure to register by 6:00 p.m. Friday, September 6.

September 7 -- Mt. Millicent from the Lodge.
September 8 -- American Fork Twin Peaks.
September 14-15 -- Mt. Nebo.
September 21-22 -- Elko and the Ruby Mountains.
October 5-6 -- Zion Narrows.
November 9-11 -- Southeastern Utah Trip.

WORK PARTY -- May 26

by Dave Sundstrom

A sunny day in May found 15 dedicated WMC members struggling to prepare our lodge for the summer season. Despite a handicap of an empty water line, many tasks were accomplished. These included the removal of snow and ice from the porch and other areas; general cleaning in the kitchen, main hall, and dorms; replacement of fire escapes (removed in the winter to lessen vandalism); and other general clean up.

A satisfying repast was provided workers by Connee Clemens and helpers. The diligent workers included the following:

Connee Clemens, Head Chef	Bob Nestor
Bob Demint	Marion Ohr
Leon Edwards	June Pitkanen
Joe Gates	Barry Quinn
Dale Green	Dave Sundstrom, Straw Boss
Ann McDonald	Art Whitehead (and youngsters)
Scotty Imber	Mimi Winterling
John MacDuff	

TWIN PEAKS -- June 8

by Sue Smedley

Sunday morning at seven O'clock. twenty hikers started on their way to the top of Twin Peaks. It began as a lovely day and a lovely hike. Then, came that little moment of indecision... "uh, which way?" When we encountered a marshy area densely populated with small oak trees, three or four hikers seemed quite certain it was "this way over the rocks." It seemed a bit scratchy and a little

wet on the feet, but it wasn't long before we reached snow. Then, Boon Newson, our leader, cut excellent steps for us across the snow field. The last stretch of the way was hazardous because of the loose rock.

The first hikers to reach the first peak hiked over to the second peak, however, the stragglers, who found it was bitter cold on top, hurriedly ate their lunches and started down rather than going over to sign the second register. We also met four other hikers at the summit who had chosen a slightly different route.

We all had great fun sliding down the snow field and I had my first experience using an ice ax which seems to be the only way to go. (Some thoughtful people brought pieces of plastic to slide down on). The last group was off the trail by 3:30, but as we were coming down we met Dale Green coming up clipping the trail. He reportedly got a late start because of the long birthday celebration the evening before. Margaret Piggot also was a little late getting started, and somehow chose another mountain. She climbed the south summit of Mt. Olympus all alone. (Good show and welcome back!)

Initial Group:

John MacDuff	Ron Perla
Scotty Imber	Bill Ohlsen
Al Wickham	Rudolf Mayer
Charlie Keller	John DeFord
George Smith	Ramon Ploch
Harold Goodro	Boone Newson
Jon Goodro	Bob Wright
Jerry Goodro	Vern LeFebre
June Pitkanen	Earl Hansen
Kathy Smedley	Sue Smedley

Later Group:

Cain Alder
Rolf Doedling
Judy Allen
Nick Treseder

TRILOBITE HUNT -- June 8 & 9

by Ted Arnow

Armed with geologic hammers, machetes, screwdrivers, and enthusiasm, a group of 14 descended on the Wheeler Shale in the House Range, about 35 miles west of Delta, to search for trilobites. Determined hacking, prying, and pounding unearthed a goodly number of fossils of the small crustaceans that dominated the area when it was covered by the sea during the Cambrian period, about 450 million years ago. Nobody, however, was fortunate enough to find a live trilobite. Camp was made Saturday night on a knoll which overlooked the trilobite area and afforded a clear view of distant Lake Sevier.

Present were:

Dick Feltis (leader)	Bob Demint
Dave Cook	Clix Byrne
Lois, Ted, and Don Arnow	Peggy and John Wheeler
Ann and Dusty McDonald	Ann and Barbara Barker
Mimi Winterling	

PFEIFFERHORN - BELLS CANYON - June 29, 1963

By Dale Green

Mt. Timpanogos has long been advertised as possessing Utah's most alpine-like scenery, which may be true for those who look at the mountains from their cars. I'll agree that Timp is beautiful but for the rugged scenery I associate with the Alps I much prefer the area between Red Pine and Bells Canyons in Little Cottonwood Canyon. I'll wager there is no other comparable area next to a metropolitan city in the U. S. The goal of our hike was to make the 17 mile traverse along the ridge between the two canyons.

We had a strong hiking group, most made the top of the Pfeifferhorn in 3 hours (Boone Newson took 2:23). George Smith and Jerry Folsom had to turn back here and the rest of us, Bonne and Wayne Newson, Paul and Dortha Pederson, Ernie Kattere, Kathy Smedley, Vern LeFebre and myself continued along the ridge stopping for the usual picture taking, rock rolling and gathering up pieces of the old airplane wreck. The wind on the ridge was unusually cold for this time of year but much more welcome than the oppressive heat sometimes encountered. We reached the South Peak of Thunder Mountain at 1p.m. Instead of the usual route down Bell's Canyon we decided to descend through Thunder Mountain Bowl. This was the most interesting part of the trip for me as I have gazed at the Bowl thousands of times from the valley but never had the opportunity to see it close up. The vertical drop to our cars from the top of the Bowl is 6,000 feet. We somehow missed all of the cliffs some people confidently predicted we would find and after a long long walk out of Bell's Canyon we arrived at our cars at 5:30 p.m.

MT. MORAN --- July 4th Weekend

by Dennis Caldwell

There having been altogether too much energy expended on the central and southern peaks of the Teton range, it was decided that attention should be turned toward the northern mountains. With their sights set on the uncanny Mt. Moran, a group of nine left the String Lake area with full packs. After a few miles of trail, the tourists

thinned out as the brush grew thicker and a reasonable pleasant hike along the East and North shores of Leigh Lake brought the group to the base of the mountain. It does not appear possible to gain one foot of elevation up Mt. Moran on decent trails no matter how one approaches the mountain. In this case, the party was faced with the thousand foot scramble up a stream over talus of not the most stable vintage. This chore was cheerfully undertaken and after a slight hiatus for a rain squall. The last arrivals made their way into the Camp of the Chicago Mountaineers just at suppertime.

Once it has been reached, the CMC camp is one of the better sites in the range. In addition to the usual views of Jackson Hole, there are splendid views of Leigh Lake and the southern part of the range, dominated as always by the Grand Teton.

The next morning shortly before sunrise eight climbers headed up the ridge, one person having been left in camp to send off the marmots. After a relatively easy hike of an hour or so, the group reached the top of the Drizzlepuss, wherein the Teton pundits had clearly over extended themselves. The group made their way down the steep face of this formation into a notch at the base of the climb proper. Here, not only is a terrifying view to be had of the route ahead, but also of the other climbers as they all rappel down on top of one another into the narrow enclosure of the notch. From here, the group split into two parties of three and one party of two and proceeded up the slabby CMC Route. Much of the rock was wet from melting snow and here and there a few streams had to be forded on the rock face. The first party was unable to dislodge all of the loose rock on the route and the second party was left with an ample supply to kick down onto the third. This unhappy circumstance along with some very ominous thunder clouds enabled only one group to make the summit at about 10:30. The view of Jackson and Leigh Lakes was thrilling as Scotty Imber and Ron Perla, long time fans of Mt. Moran, can testify. The descent was tedious and time-consuming consisting mostly of down climbing with occasional rappel. The Drizzlepuss was reascended and the group returned to camp at dusk. On Saturday everyone carted their gear back to the String Lake parking lot and waited for the bus.

Cast:

Dennis Caldwell
Forrest Hatch
Scotty Imber
Vern LeFebre
Dail Ogden, Leader

Ron Perla
June Pitkanen
Kathy Smedley
Nick Treseder

'Twas the third of July and all through the bus
The order of business was rant, rave, and cuss.
The Mae Wests were hung from the top rack with care
While under the seats there were acres to spare.
Why was a pack clutched by each mountaineer?
'Cause presidential decree said - THE DOORS MUST BE CLEAR!
Why were those packs soon all over the floor?
Well - Jim Beam and Evanston made neatness a bore.

As the Tetons drew nearer, how the riders did shudder!
MacDuff drove that bus without compass or rudder.
The Coulter Bay Campground was shrouded in silence
That was shattered by the Wasatchers' three A.M. violence.
Our members were scattered. What a terrible plight
Greeted our waking by the dawn's "early" light.
Get to Area 6 was the urgent behest.
The Ogdens had found it - but God help the rest.

'Twas a fine Thursday morning for a ride on a raft,
With mosquitoes attacking from forward and aft.*
"Take that swift right hand channel" Cousin Boone Boomed.
A miscalculation! The boatload was doomed
To weather a "mild" summer storm - all alone.
There were mutinous rumblings of sins unatoned.
"Never fear" the intrepid commander decried.
A deluge of hailstones was all that replied.

On Friday the river was abandoned with fervor.
It looked like sheer madness to an impartial observer
To see Uncle Dave and Aunt Y'all at a run
Pursuing the bus. And this you think fun?
A twelve hour hike compressed into seven
Does things to the heart that help populate heaven.
Better a "nature walk" - perhaps less sensational,
But Helen and Dale claim they're most educational.

* See Maurine for details

Let's get back to our saga, we're off on a tangent,
Speaking of items so temporal and transient.
If you think that the Snake was forever forsaken,
You're misled, misguided, and sorely mistaken.
On Saturday the boats were inflated and boarded
Near rapids - an error we could ill have afforded.
The first group proceeded with nary a hitch.
The second's propensity was to wallow and pitch!

They hit a wave broadside and there's no denying
That Ray, Sue and Clint did some beautiful flying.
Al helped them in; he was solemn as stone,
Unruffled, unhurried, and DRY AS A BONE!
But wait! What's that cry, that sound like a clarion?
Quick - get her aboard! It's our poor shoeless Marion.
Some scoffed at that rapid, but their jaws dropped ajar
When they heard it extinguished old Maverick's cigar.

The trip on the lake backed up from the dam
Was as anticlimactic as lobster, then Spam.
All Shivered with cold but knew rescue was near.
"McDonald with Motor" was bound to appear.
The rescue proceeded, though a bit vice versa.
What Ann has to learn is her forward from reversa.
It soon was discovered that paddling was better
Than dragging behind where the drenched just got wetter.

Jackson Hole was invaded that Saturday night
By creatures in clothing considered impolite
In cafe society. But the Pink Garter Show
Got a lift it ill needed from our rembunctious front row.
Aunt Y'All and Doc Killjoy got up on that stage
And danced like the minuet was still all the rage.
Most likely the audience found it "Oh, so enthralling."
But have you ever danced with a bat? It's appalling!

On Sunday we sadly prepared to depart
Each wishing that this was only the start.
When we left the teen terrors, we thought we'd disowned them.
At Jenny we found we'd merely postponed them.
The Elysian silence was shortlived at best.
Not even a bribe could dampen their zest
For all kinds of mischief, for giving folk names.
Without them a club trip is really quite tame.

The River Running Relatives

Maxine and John McDuff
Paul (Maxine's brother)
Maurine and Max Tyler
The Teen Terrors (Mel McDuff
and Dave Tyler)
Cousin Boone (Newson)
Barbara Evans and children
David, Michael, and
Janet, plus friends
Benjy and Richard Rains
Ann McDonald and children
Lelsie and Dusty

Ann and Clint Barker and
daughter Karen
Uncle Dave (Cook)
Aunt Y'All (Mimi Winterling)
Al Wickham
Marion Ohr
Thola Ogden and son Scott
Sister Sue (Smedley)
Ray Ploch
Dale Green
Helen Batison
Brother Maverick (Phil Wennhold)
Doctor Killjoy (Ann Ruhmann)

DEVIL'S CASTLE - July 4

by Ruth Ohlsen

The nine hikers who felt that Devil's Castle was the safest place to spend the 4th of July began their adventure from the campground area in Albion Basin. Braced with fresh mountain air and a donation of Lifesavers from our leader, Carl Bauer, we soon reached the charming little "Secret Lake" where we stayed only a moment before heading up the steep slope. The trail was not too clear and often we had to guess the way through the loose rock and snow fields. On the ridge was a delightful little meadow filled with dainty wild flowers where we stopped to take in the sweeping view. We could look into Albion Basin on one side, and on the other we could look down into American Fork Canyon across to the back side of Timpanogos and much beyond.

After the rest in the meadow, we scrambled across the ridge toward the "Castle", which from our vantage point looked very much like a castle. Some of the less brave hikers stayed at the lunch spot while the others tackled the remaining rugged section of rock. The scrambling got a bit risky so even this group turned back before reaching the reported register.

The trip down was fast and fun. Many of us had our first experience with sledding down a snow field...minus the sled. It was a good hike and we highly recommend it.

Bob and Marie De Mint
Jeanne Torosian
Ted Arnow
Alfred Goodwin

Ruth Ohlsen
Mary Hogan
Don Arnow
Carl Bauer

TIMPANOGOS HIKE - July 13

by Ray Marchi

The ascent was made from Aspen Grove on a bright Saturday morning, under the leadership of Ernie Katten, a brisk pace was set, and a thousand yards along the trail social conversation turned back. The vangard reached sparkling Emerald Lake two and a half hours later and split into two groups. One group ascended the ice field and the other went by way of the north ridge. Meeting at the summit an hour and a half later, 15 hikers were treated to a breath-taking panorama due to the excellent visibility. Naturally, everyone returned by way of the ice field, glisseding down in the hot midsummer sun. The remainder of the trip was uneventful except for the collapse of a snow bridge near one adventurous hiker. (It was unfortunate that we did not go the following week so as to qualify for the Timpanogos merit badge).

Hikers included:

Laird Crocker

Peter Hoving

Ray Marchi

Mrs. Meyers

Ann McDonald

Boone Newson

Wayne Newson

Mike Newson

George Smith

Peter Stifel

Ray Ploch

Harold Goeckeritz

Sarah Weller

Ann Ruhman

Will Brown

Court Anderson

Jerry Folsom

Mary Hogan

Dean Gerber

Jim Lyndon

Steve Olson

Dick Perkins

Judy Peters

Lynn Ravsten

Dave Thorell

Bard Merritt

Bob J. Wright

GARNET HUNT?? July 20

We started an hour and a half late and promptly got lost. After finally finding the correct mine dump two brave scouts ventured out in search of the garnets. They found only flies by the dozens and hordes of mosquitoes. The group split with most heading for Twin Lakes. Luckily there were fewer insects there. The solar eclipse came and went so we left for the lodge. The mosquitoes and deer flies were even worse on the way down.

Hunters :

Connee Clemens	Ann McDonald
Celia Rockholt (new member)	Gerry Powelson
Leon Edwards	Karl Dunn
Sheila Mattes	Annette Odegard
Mimi Winterling	Dale Green

RAMBLINGS

by Dale Green, President

The Board of Directors has appointed me as temporary CLUB HISTORIAN. My hope is that I will find someone who has the time and interest to take over on a permanent basis. My first job will be to collect old Ramblers and trip announcements. These copies will be collected if possible. The most complete set will be bound and placed in the Utah Room of the U.of U. Library. This copy may not be removed from the Reading Room. The other two will go to the S.L. Public Library and the Club Historian. If you are willing to donate your old Ramblers, please call me at CR 7-6417. Donated Ramblers will be marked with the donor's name. I have some extra copies that I will swap if you desire. I am also interested in photos of Club events and people especially if identified by names and dates.

There are many past trips our Club has taken that were not written up in the Rambler. This causes a distinct gap in our history that can't be replaced after a few years. Trip leaders should appoint someone to submit a write-up, even if its only a paragraph and the names of the participants.

A few reports have drifted into me of inadequate leadership on some of our well-attended hikes. The problem has always been with us and no one has yet come up with a lasting, practical solution. I would like to make two suggestions:

1. Leaders of large groups appoint someone to bring up the rear or do it themselves if someone else knows the trail.
2. Experienced hikers pitch in and help when they see something obviously wrong and the leader doesn't act.

Uinta Mountain hikers might be interested in the new fishing guidebooks for the Southwest section of the mountains. Although primarily for fishermen they are up-to-date and show the trails and lakes in detail. Buy them from the Utah Fish & Game Dept.

NEW MEMBERS

Judy Allen 466-6123
2606 Evergreen
Salt Lake City, Utah

Nancy Eisenman EL 5-7085
2224 Hubbard Ave.
Salt Lake City 8, Utah

Harold Goeckeritz AM 6-8155
4200 South 815 East
Salt Lake City, Utah

Diane K. Jones EM 3-9646
1406 Michigan Ave
Salt Lake City 5, Utah

Gerald Powelson SK 6-3004
572 North 3rd East
American Fork, Utah

Celia Rockholt 328-0020
776 South 6th East
Salt Lake City, Utah

Maury Whitaker 355-2551
860 East 5th South Apt. 7
Salt Lake City, Utah

Sarah Weller 355-4269
428 4th Ave #6
Salt Lake City, Utah

Calvin D. Wood 278-2359
1836 Siggard Drive
Salt Lake City, Utah

A. A. (ed) Bander AX 5-3200
291 East 2nd North
Bountiful, Utah

CHANGE OF ADDRESS

Sue Smedley
265 1st Avenue Apt 8
Salt Lake City, Utah

Kathy Smedley
Quarters G
Freeport Center Station
Clearfield, Utah

(Remove From Rambler and SAVE)

Rules and Regulations of the Wasatch Mountain Club Inc.

1. The Wasatch Mountain Club will not be responsible for accidents or loss of personal belongings.
2. No person shall be permitted to carry or use fire arms.
3. All persons will refrain from the needless destruction of plant or animal life.
4. No short-cutting on trails.
5. The trip leader is in full charge and all persons will be governed by his decisions.
6. No persons shall be allowed to attend any trip if, in the opinion of the leader, they are not qualified and adequately equipped to complete the trip successfully.
7. Leave the camp and trail in the same or better condition than they were found. Carry all non-burnable trash (cans, glass, foils, etc.) back out.
8. Unless stated otherwise in the announcement for that function, all trip participants must register either at Club Headquarters or with the trip leader.
9. Obnoxious indulgence in alcoholic beverages will not be tolerated on or in connection with club functions.

Lodge Regulations

For the benefit of the many new members and other members who undoubtedly will be interested in using our Lodge at Brighton this summer, we are stating again some of the regulations which are necessary in its use. Respect of these regulations will help safe-gard this valuable Club property.

1. Respect Club property at all times.
2. Fires built must not be left unattended.
3. Positively no smoking in the upstairs dormitories.
Liquor allowed only on designated occasions.
4. Unoccupied Lodge must be kept locked. This applies to Lodge weekends when all members may be away from the Lodge for certain periods of time.
5. Before leaving, go over the checkout list on the bulletin board by the kitchen.

Regularly Scheduled Lodge Functions:

1. Persons attending a regularly scheduled Lodge function shall register by telephone at Club Headquarters, EM 3-7150, or with the trip leader.
2. Trip leaders shall obtain keys from the Lodge Director or designated person and return them within two days after the trip.

Unscheduled Lodge Functions:

1. Members desiring to use the Lodge on an unschedule trip shall obtain permission from the Lodge Director and any one of the following: President, Treasurer, or O'Dell Peterson at Club Headquarters.
2. A minimum of Four Adult members shall be required to open the Lodge on an unscheduled trip. (Note: Spouses are members, guests are not.)
3. The Lodge shall be rented to outside groups only with the approval of the Doard of Directors.
4. No member shall entertain more than four guests without permission of the Board.

Lodge Fees:

1. The charge for use of the Lodge per day with all facilities shall be \$4.00 minimum or .50 per person which ever is greater. Non-member guests fee shall be \$1.00. (You may put in a few hours work instead of paying the fee. See the Lodge Director, first.)
2. The minimum charge of \$4.00 will not apply if the furnace is not used.

Non-Member Lodge Rental:

The Lodge is available many times during the year for rental to approved non-members groups at very reasonable rates. Contact the Lodge Director for details.

Children

1. Children are allowed at the Lodge during the day and for dinner at regularly scheduled wood gathering and Lodge work parties.

2. Children are not allowed in the Lodge on the evening of, or overnight on, a regularly scheduled Club function unless permission is expressly given in the announcement for that function.
3. Children are generally allowed on the shorter local hikes (unless otherwise stated in the Rambler) but only if the parents are both willing and able to take full responsibility for their children on the trip and can assure that the children will not interfere with the pleasure of the adult members on the trip. On the longer hikes, such as Twin Peaks, Lone Peak, etc., and on trips requiring overnight camping or long automobile rides, permission must always be obtained in advance from the leader. The leader should grant permission only if he is certain that the parents will assume full responsibility and that the children will not interfere with the pleasure of the adult members.
4. On occasions not covered by the above, such as when the Lodge is open on an informal basis, the Board or the Leader shall announce whether or not children may attend.