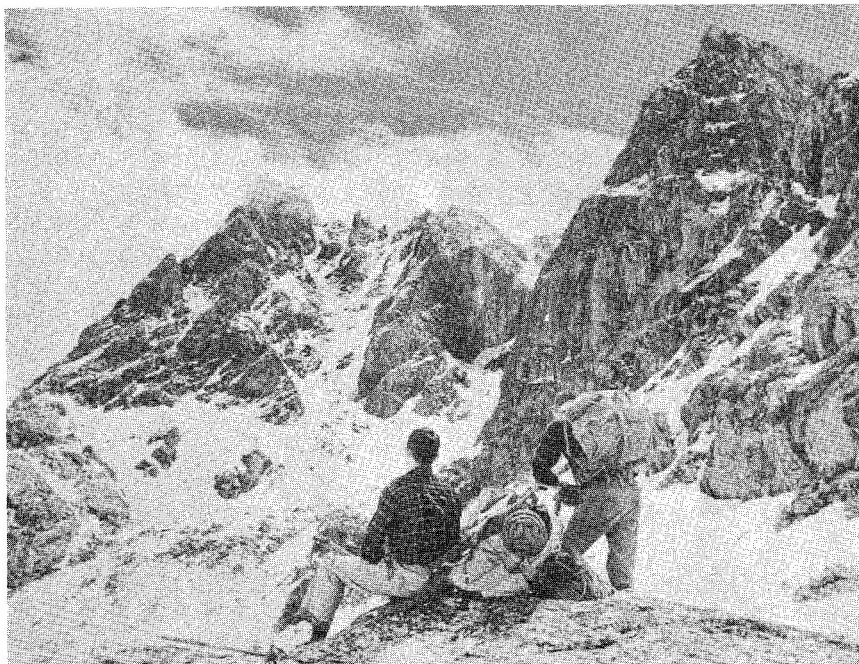


# The Rambler

SEPT 63



*Official Publication of*

## THE WASATCH MOUNTAIN CLUB

Club Headquarters: 425 South 8th West, Salt Lake City, Utah

Lodge: Brighton, Utah

Telephone EM 3-7150

DALE GREEN, <i>President</i> .....	CR 7-6417
AUSTIN WAHRHAFTIG, <i>Vice President</i> .....	EL 9-4454
MARION OHR, <i>Secretary</i> .....	EM 4-6784
WOLF SNYDER, <i>Treasurer</i> .....	AM 6-1374
BRUCE CHRISTENSON, <i>Boating</i> .....	CR 7-1618
AUSTIN WAHRHAFTIG, <i>Conservation</i> .....	EL 9-4454
ANN McDONALD, <i>Entertainment and Recreation</i> .....	CR 7-0816
DAVE SUNDSTROM, <i>Lodge</i> .....	EM 4-6143
EARL HANSEN, <i>Membership</i> .....	HU 4-3174
TOM STEVENSON, <i>Mountaineering</i> .....	364-5268
CONNIE CLEMENS, <i>Publications</i> .....	363-5965
ALEXIS KELNER, <i>Publicity</i> .....	359-5387
JOE GATES, <i>Trails</i> .....	266-7826
JOHN MacDUFF, <i>Transportation</i> .....	HU 7-7188
DAVE COOK, <i>Trips and Outings</i> .....	355-4086

## TRIP SCHEDULE -- September, 1963

- August 31-September 2 -- Snake River Trip. By the time this Rambler comes out, this trip should be on its way. If you are unable to depart with the rest of us on the bus, drive up later in your car at your convenience. River running and hiking will be scheduled. The camping place will be at our usual spot, (Burnt Creek?) Leader for this section is Dave Cook. For climbers there will be practice climbing on Grand Teton Glacier. (Climbers will drive to Jackson in private cars.) They will hike up to Amphitheater Lake and Camp Saturday morning and climb to the glacier in the afternoon. Instruction in all techniques will be given and classes will continue through Monday morning. Mountaineering requirements can be fulfilled on this trip. Hikers and campers are welcome. Register with leader, Tom Stevenson
- August 31-September -- Lodge Open. Take the family and spend a pleasant weekend and holiday at the lodge. This is a children's weekend with activities arranged by those participating. Hostess, Janet Janis.
- September 2 -- Box Elder Peak from American Fork Canyon. Those not leaving the valley over Labor Day may want to get away from the crowds and heavy traffic on this holiday. Box Elder Peak is about three miles north of Timpanogos Cave and is accessible by a trail from Deer Creek Canyon. When on top, you'll be able to see a great portion of Utah Valley. Register before 6:00 p.m. on August 31 at Club Headquarters. Meet at Harmon's (3900 South State) at 8:00 a.m. Leader, to be announced. (Rating 9.0, el. 11,101)
- September 5, 12, 19, 26, October 3 -- Rock Climbing at Pete's Rock. Note the change in place. The usual classes and social hour will be held beginning at 6:30 p.m. Leader, Tom Stevenson and Carl Dunn.
- September 7 -- Mt. Millicent from Lodge. Here is a short hike for the Saturday mountaineering fans. Some side trips to Lakes Martha, Mary, and Catherine may also be taken to add enjoyment to the hike. Register by 6:00 p.m., September 6, at Headquarters. (EM 3-7150) Leave the lodge Saturday at 9:00 a.m. Leader, Dave Sundstrom. (Rating 3.5, el. 10,425)
- September 7-8 -- Lodge Open. As long as there is a demand, the lodge will remain open for members' enjoyment on weekends. Drive up for the evening or stay all weekend. Host, Steve Cole.

September 7 -- Western Party. It's just about time for this big Western Shindig at the lodge. A dollar fifty in hard cash will admit you and should give you enough WMC currency for gambling and purchasing food. If you happen to be a big loser, you can buy extra currency for additional gambling. Mix will be sold for REAL MONEY ONLY. (This will include your choice of spirits, which have been donated by a generous member.) Be sure to wear your western garb and count on having a rip-roarin' good time. A delicious menu has been planned by Anita Feltis and her helpers. Remember, no one under 21 will be admitted and only two guests per member. Most important -- NO RESERVATIONS, NO ADMITTANCE. So, be certain to register by 6:00 p.m. Friday, September 6.

September 8 -- American Fork Twin Peaks from Alta. A mile and a half hike to the top of Mt. Baldy and then another mile and a half along the top of some very spectacular razor-sharp ridges make up this trip. It's about a 9.5 hike with a 2,800 foot rise from Alta. Register by 6:00 p.m. Saturday at Headquarters. Meet at the mouth of Little Cottonwood Canyon at 8:00 a.m. on Sunday. Leader, John MacDuff.

Also, Climbing on Big Cottonwood Slabs. Meet at the beginning of Lake Blanche Trail at 9:00 a.m. for an enjoyable day of friction climbing. Tennis shoes will suffice, and bring a lunch. Everyone is welcome -- this is an easy climb.

September 14-15 -- Mt. Nebo. Nebo is the highest in the Wasatch Range with elevation of 11,928. It is approximately 70 miles south of Salt Lake City which gives one an excuse to spend the night. Leave Salt Lake in time to have a swim at Payson Lake and take enough food for supper, breakfast and lunch. For those not wishing to go to the top, side trips in Payson and Santaquin Canyons can be undertaken. Register by 6:00 p.m. Thursday, September 12. For more information, phone your leader, Dick Bell.

September 14-15 -- Bicycle Trip from Evanston, Wyo. to Mirror Lake. and Return. Leave for Evanston Friday at 8:00 p.m. from 134 C Street for an enjoyable evening before the strenuous cycling trip. Contact the leader of Club Headquarters by Wednesday, September 11, so that transportation can be arranged. We have a pickup truck for the bikes. Leader, June Pitkanen (EM 3-0190)

- September 14-15 -- Lodge Open. The temperatures in the valley are cooling down, but the atmosphere at the lodge is always warm and cordial. Drive up and stay as long as you like, Host, Tom Stevenson.
- September 17 -- Folk Dancing. Classes at 75¢ per session start for beginners this night. They are held at 255 East 3rd South. Some of our members are regulars at these weekly sessions and highly recommend them.
- September 18 -- Membership Meeting. Some important business must be discussed at this meeting, which will begin at 8:00 p.m. at one of the Utah Power and Light Co. Buildings. (Call Club Headquarters or Ann McDonald) Special feature of the evening will be a presentation on "Caving" with slides and talk by Dale Green. Of course, free refreshments.
- September 21 -- Farmington Canyon. This time of year the leaves are starting to change their color from the greens to the bright reds, yellows and browns. Here is a scenic drive quite close to home that is often overlooked by the club. Register at Headquarters by 6:00 p.m. Friday and meet at 10:00 a.m. at the junction of Victory Road and Beck street. Your leader will be Carl Bauer.
- September 21-22 -- Elko and the Ruby Mountains. Here is a great chance to get the gambling fever out of your system and also take a hike or climb in some of Nevada's prettiest mountains. We will leave Salt Lake City at 7:00 p.m. on Friday from the University Union Building (rear). Rooms can sometimes be obtained at a reasonable rate, if arrangements are made in advance. NOTE: This trip will be made only if enough interest is shown and if someone volunteers to act as leader. If you are willing to be leader, contact Joe Gates (EM 4-9577) Registration will be handled at Club Headquarters. At this time state if you want sleeping quarters arranged for you. Registration deadline is 6:00 p.m. Tuesday, September 17.
- September 21-22 -- Lodge Open. For the low cost of just 50¢ per member you can stay all night and take advantage of our club lodge. Plan your own activities and menu and just take life easy. Leader, Colleen Cox.
- September 28 -- Climbing on the S-Curve Overhang. Bring Pitons and carabiners for an interesting morning of climbing. Meet at the curve at 9:00 a.m. This is for experienced climbers. Piton and belaying practice for beginners will be held in the afternoon at the same general location. Meet at 1:00 p.m. Leader, Tom Stevenson.

- September 28-29 -- Lodge Open. This is it: Our monthly charcoal broiled dinnertime at the lodge. You bring your meat and all the trimmings, and the red hot barbecue will be ready. Feel welcome to come up for dinner only or stay all weekend. Host, Joe Gates.
- September 29 -- White Pine and Red Lakes. A casual hike to White Pine Lake, cross over the ridge to Red Pine, and then down again! This will all take place in some of Little Cottonwood's prettiest pines and changing aspens. This is a must for those who relish changing fall colors. Register by 6:00 p.m. on Saturday. Meet at the mouth of Little Cottonwood Canyon at 8:00 a.m. Leader, Earl Hansen.
- October 5-6 -- Zion Narrows. Time has finally come again to start making plans for one of our most scenic trips. The closed-in effect created by the sheer cliffs and the beauty of the vegetation in Zion at this time of year probably cannot be surpassed by any other canyon in the west. Register at Headquarters by 6:00 p.m. Wednesday, October 2. Your leader will be Dale Green. Price of the trip is \$10.00 which includes your round trip on the bus.
- October 5 -- Mt. Majestic from Lodge. Here's another short hike for the Saturday crowd. Known as Clayton Peak on most of our maps, it is within easy walking distance from the lakes to the east of the lodge. Register by Friday at 6:00 p.m. Start from the lodge at 9:00 a.m. Leader will be announced. (Rating 4.5 el. 10,721)
- October 13 -- Deseret Peak.
- October 20 -- Geode-Hunting Trip in the Dugway Area.
- October 26 -- Halloween Party.
- October 27 -- Lewiston Peak in the Oquirrh Mountains.
- November 3 -- Notch Peak in Millard County.
- November 9-11 -- Southeastern Utah Trip.

MAROON BELLS TRIP - ASPEN COLORADO - July 24-28  
by W. M. C. Southern Belles, Mimi and Annette

Artists Mecca and Ashcroft Ghost Town

\*Sue snatched from Snowmass

Pots and pans -- Cinderella

Last call dirty dishes. Jump up or you've had it.

Eat, Entertainment, Excursions

Nocturnal nonsense

Mimi Bird -- Y'all, Help Y'all, Glub Y'all

Arise at 9 -- in bed by 10

Rescue -- River Running - Rappeling

Opened the wilderness area -- Maroon Bells and Castle Peak area

Ought to do it again

Nice nights with nine eccentrics

Back paddle! They're running for their cameras.

Excelsior -- Onward and Upward..... To rest is not to conquer.

Lazy daze -- Laughable ways

Lovely lakes -- Lovely Bell(e)s

Swimming -- Spelunking

\*Sue Handby, a cute Dallas teenager, a victim of anoxia, was left by an obviously inexperienced hiking group at the 11,700 foot level of Buckskin Pass. Four members of our party (Dave, Mimi, Laird & Carl) found her and carried her back to our camp from which fellow Texans took her home.

M O R A L: With inexperienced hikers, LEAD FROM THE REAR.

Dave's three cents worth:

Lots of rocks

Lots of rapids

Damn good river

Participants:

Annette Odegard-- Cinderella

Carl Bauer

Dave Cook

Laird and Ruth Crocker and Son

Jen Giddings

John and Maxine MacDuff

Mimi Winterling

Paul Placek (Guest)

Sue Handby (Guest)

MT. ST. HELENS CLIMB - SOUTHWEST WASHINGTON - August 1 - by G.H. Smith

On July 31, several members of the Wasatch Mountain Club rendezvoused at Longview, Washington, and together with the S. H. Smiths' (Parents of George Smith) of Longview, journeyed to Spirit Lake, Washington, at the foot of Mt. St. Helens. A delightful evening was spent in the Mt. St. Helens Club Lodge, located two miles across Spirit Lake from Mt. St. Helens, tucked in amongst towering Douglas fir trees.

The climb was commenced early on the morning of August 1, after a refreshing speedboat ride back across the lake with majestic Mt. St. Helens in all its early morning sunlit splendor in full view. The ascent route was reviewed during this boat trip by identifying several of the more prominent rock formations mentioned in the climbing map furnished by the U.S. Forest Ranger Station. An excellent paved road leads up to the timberline, elevation approximately 4300 feet, and permits rapid automobile travel from the lake, elevation 3199 feet. After about a half mile of pumice rock slipping and sliding (300 feet of elevation change) the long, intriguing snow field that climbs for almost 5000 feet was reached. This snow field varies in grade steepness from 20% to 35% (estimated by climbers), with the majority of the climb in the 25% to 30% category. Over one dozen crevasses could be observed on the route taken, in an area known as the Forsythe Glacier. For those familiar with Mt. St. Helens, this route went up the left and top side of the Sugar Bowl, the left side of the Little Lizard, traversed over to the top of the Big Lizard and then went straight up past the Island and the Boot to the summit. Only one crevass had to be crossed, via a snow bridge, following the above route and it was necessary to belay at this point. Because of the grade, snow and ice conditions and crevass danger the climbers roped up and used crampons and ice axes throughout the entire ascent and descent. The ascent took 5 hours, 1000 feet per hour, with a few short rest breaks to peer into some of the more spectacular crevasses and observe a large area of seracs near a rock prominence known as Goat Rocks. The summit of Mt. St. Helens is the crater of a once active volcano (last recorded activity was in 1850) and is about a quarter of a mile in diameter. A spectacular view thrilled the climbers on this day with Mt. Adams and Mt. Rainier in Washington and Mt. Hood and Mt. Backer in Oregon in full view.

This climb and the wonderful hospitality of the Mt. St. Helens Club are recommended for those climbers that enjoy the scenic beauty of tall fir trees, deep blue mountain lakes and a terrific ice and snow field climb. The writer suggests that this trip be repeated next summer so more of the Wasatch Club can participate.

### Climbers

Ramon Ploch  
George Smith

### LAKE MARTHA OVERNIGHT - August 2

by Bob Demint

Admidst ominous skies seven undaunted souls shouldered their packs and headed for higher ground. A 45-minute hike from the lodge found us at our destination at Lake Martha. A serene setting among huge spruce trees and a large campfire provided fuel for conversation till the wee hours of the moring. Occasional glimpses of a full moon peering through the fleecy clouds warmed our souls. The following morning we reluctantly headed back to the lodge, and the gallant of our group rescued a sick scout camped on the shores of Lake Mary leading him to the lodge where a full meal seemed to cheer him while he waited for his summoned parents. Participants included

Leon Edwards  
Ernie Katten  
Bob Demit  
Joe Gates

Ann McDonald  
Mimi Winterling  
Connee Clemens

### FUN AT THE LODGE - August 3-4

by Liesel Imber

When we were at the lodge we had very much fun. We visited a burned-down house and we played on a big rock. We slept at the lodge. We ate dinner at the lodge. We ate breakfast at the lodge. We ate lunch at the lodge. (Note: In between, they ate, too) We heard alot of nice folk songs and we sang some of the folk songs that we knew. We also played ping pong and we played cards. We took a hike Sunday morning but it rained so we went to the store and bought some gum. Before it started to rain we saw a little lake. Those people with us were

### Adults

Ann Barker (hostess)  
Ann McDonald  
Barbara Evans  
Clare and Mel Davis  
John Mildon  
Willadean Jefferies  
Scott Imber  
Lois Conaty (guest)  
Janet and Burt Janis

And these folks without children: Bob Newman, Steve Cole,  
Tom Stevenson, Steve McDermaid, Sue Spencer, Jeff Hansel,  
Le Ila Russel.

### Children

Karen Barker and Patty Pace  
Dusty  
Janet  
Shirley and Dee Ann  
Don, Kerry and Jackie  
Jim, Dana and Richard  
Kenny and Liesel  
Kathi, Marti and Rob  
Baby

LAKE DESOLATION - August 10.

by Marion Ohr

A few ambitious souls gathered at the foot of Big Cottonwood Canyon, just rarin' to go. With the usual lack of knowledge as to the whereabouts of the trail, and some serious study of maps, we finally got off to a good start. The morning was bright and beautiful, and there were still many flowers along the trail.

All went well until we came to what should have been the last ridge. Naturally, most of the group went down the hill, which we then had to go up again, because June, who had run ahead, could find no lake. After doing things the hard way, we finally found a lake below us. Here we sat, enjoying the scenery, until someone decided it was not the lake we were looking for. A few energetic souls, meanwhile, had scouted out another lake, and here, on a rocky ledge overlooking this little gem, we ate our lunches. We then had enough energy to descend to the lake shore. The water proved to be warm and irresistible to June Pitkanen. She started to wade, then swam to the opposite shore and back again.

By this time the air was chilly, and rain clouds were overhead, so we know it was time to head back to civilization, through Bear Trap Canyon. Naturally, the trail was on the other ridge. After making it to the trail, the descent was uneventful, and we actually emerged at the place where one of the cars had been parked.

This was easily one of the most scenic hikes this old lazy-bones has ever been on. With a bit of refreshment at the Patio, we were ready for the rest of the week-end.

Those participating:

Al Wickham, Leader  
Joe Gates  
Laird Crocker  
Connie Clemens

June Pitkanen  
Will Brown  
Dave Thornell  
Marion Ohr

REYNOLD'S PEAK - August 11

by Peter Hovingh

The Reynolds Peak excursion was made on a warm, humid Sunday morning. Several of us descended down the canyon from the lodge and our leader (Dale Green) Who found the calm evening at the lodge somewhat nerving, brought up a group from the mouth of the canyon. After the assembly at the beginning of the Dog Lake trail, the trip began with George and Boone making the dash to the top. It was not long before the leisure-hiking group encountered a herd of sheep whose bleats, aroma and muss broke the calmness of the Sunday stroll. After arriving at Dog Lake we left the sheep and the trail and stalked through the brush to the peak. By mid-morning we joined Boon and George and enjoyed a panoramic view while having lunch. Again on this trip some people were better prepared than others, as was revealed when Lyman brought a fishing pole along. However nobody brought the sardines. The return trip was by a different canyon and we reached the autos before the rains came. Everyone who started the walk also made the summit and furthermore they even returned

George Smith  
Bill Janney  
Dale Green  
Howard Segal  
Gerry Powelson  
Will Brown

Boone Newson and sons  
Lyman Lewis  
Judy Allen  
Ann McDonald  
Peter Hovingh

LODGE WORK PARTY - August 17

by collaberation

A great deal of progress was made on much-needed projects at the lodge "work party weekend." The outside porch floor was recovered with tar paper and then plywood, which should be covered

in weather proof paint by the time this Rambler is published. Considerable cleaning up of the grounds was accomplished in the way of removing dead branches, dying brush, etc. Inside, over half of the wall facing in the entryway was installed with plans for completing this job prior to the Western Party. Before beginning this work, a large portion of the hall floor also was replaced. In the kitchen, a beautiful new vinyl floor was installed after the difficult removal of the old flooring. More good changes are in store for the kitchen, so members who have not visited the lodge recently will want to do so SOON.

At the end of a very long day, hammers, paint brushes and saws were set aside for a charcoal broiled dinner per individual menu. This concluded the Saturday work until the following Sunday morning, when all hands busily resumed their tasks.

Workers included:

Hostess Janet Christiansen  
Chief Dave Sundstrom  
Chef Mimi Winterling  
Buyer Dale Green  
Ann McDonald  
Joe Gates  
Dave Cook  
Leon Edwards  
Steve Cole  
Connie Clemens  
Gerry Powelson  
Marion Ohr  
Colleen Cox  
Herb McCain, guest  
Ted Arnow

Dick Feltis  
George Smith  
Austin Wahrhaftig  
Ruby Wahrhaftig

Visitors and dinners:

Barbara Owen  
Joy and Gayle Greetham  
Bob and Cathy Wright  
Burt and Janet Janis  
Vic and Elaine Dunfeld, guest  
Helen Battison  
Diane Jones  
Stan and Avon Murdock  
LaMar Petersen  
Lois Arnow  
Anita Feltis

LONE PEAK by way of corner canyon - August 18 by Sue Smedley

Thirteen hearty souls met at the Safeway parking lot at six o'clock Sunday morning. We rode together in the three cars up a rutted, narrow road to our starting point. At 7:10 we shot out of the cars and started making our way up the rest of the road so fast that we passed the trail and proceeded up the mountain our own way. High up, the brush wasn't too bad and we crossed two

refreshing streams of water. When we'd gone far enough east, we progressed up a creek bed. Near the top of this, I learned what granite is to climbers who like friction. And finally there they were - those majestic cliffs with the one rugged Lone Peak. Boone was on the peak in twenty five minutes while the rest of us were having a great time deciding which way up the rock. Then, Boone called down a storm warning and a few of those less partial to rock climbing had lunch and hiked back down.

The rest of us with the help of the better climbers went up the rocks as quickly as we could, and yours truly, was the last one to crawl to the summit. I'd barely signed my name to the register at one thirty when I became loaded with static electricity. With humming and sparks we all left that summit so fast we were well below it in a few minutes. Going down the north west ridge, we came to a beautiful meadow where we stopped for lunch. From there, our trail was a creek bed of granite. Now the heat of the afternoon and the lower elevation really had us fagged, thirsty and frantically bush whacking looking for the trail. But with our good leader, Boone, it wasn't long until we came to both. I was so thirsty I alone nearly drank the little stream dry. Then, all thirsts quenched and refreshed, we scurried down the mountain to the cars at 5:15 to find an extra one. John McDuff's. It seems he had overslept slightly and arrived a short while after we'd left. He also missed the trail and hiked part of our trail, then headed for the cliffs, couldn't find us, and when almost to Alpine, finally decided it was time to call it quits, and left about fifteen minutes after we did. Sounds like after all that scouting he should really know that area. Uh, John?

Oh, to all those who may aspire to make the beautiful summit, I'd advise some rock climbing practice.

Hikers to the summit:

June Pitkanen  
Al Wickham  
Scotty Imber  
Peter Hovingh  
Laird Crocker  
George Smith  
Boone Newson-Leader  
Sue Smedley

Hikers:

Jim Lee  
Janet Yergensen  
Delbert Yergensen  
Will Brown  
Kim Seeley  
John MacDuff

## KESSLER PEAK - August 24, 1963

Eighteen hikers and one small dog assembled at 8:00 a.m. at the mouth of Big Cottonwood Canyon for the hike to Kessler Peak, a 10,403-foot mountain that the club hasn't climbed in recent years. We drove up Mill D South Fork for a mile and then hiked another mile up to the "trail" because the road was in poor shape (although a few malcontents claimed that it would have been an easy drive). Since there was no obvious trail, we started up through the brush and after some scrambling were on grassy slopes. Just below the saddle south of the peak we hiked through a bowl that featured some limestone eroded in interesting shapes. The "assault" on the summit was led by Dick Justesen, a WMC member of several years back, who made it up in a little over two hours. The last 200 feet involved a little rock climbing, but all the non-members made the summit, probably because no one told them that it was a little tricky. Ted Arnow's new dog (christened Polyandra during the day after Ted discussed her love life) didn't make the top because she was watching out for ted. After lunch a few energetic types climbed the peak just south of and 23 feet below Kessler. Going down we followed a trail most of the way which wasn't as scenic as the ascent but a little easier. After we reached the cars it was agreed that the hike should be rated higher than 4.5, probably because it was so steep (we climbed 2,300 feet in less than a mile). Anyway the beer tasted pretty good.

### Hikers:

Joe Gates  
Dick Justesen  
Gail Lloyd  
Ted, Lois, and  
Don Arnow  
John Driver, guest  
Bob Tokerud, guest  
Dave Thornell

Connie Clemens  
Ron De Waal  
Howie, Mary, Brad, and  
Binnie Segal  
Ray Ploch  
Larry Fisher, guest  
Celia Rockholt

## RAMBLINGS

by Dale Green,  
President

### Proposed Constitutional Amendment

One of the members of the Board of Trustees did not renew this year's membership in the club and indicated that he has no intention of doing so. The present Constitution does not provide any method of replacing a Trustee who does not serve the full 4 year term. An amendment to correct this deficiency will be voted on at the next general membership meeting on September 18.

### Membership

According to my records we had a total of 222 members on April 30, 1963, the end of our fiscal year. When the membership list was typed, 52 persons had not paid their dues, but 21 new members brought the total on the list to 191. At the end of the previous fiscal year, we had 155 members. Last year we recruited 74 new members. The average for the previous eight years was 22 new members per year and for three of these years the totals were only 13, 15 and 16.

### Water

Because our water system doesn't freeze in the summer some people think it is okay to leave it turned on when they leave the Lodge for the week. This is not so. Our water is not chlorinated and the water left in the pipes and tank stagnates. Not only does this smell bad when the faucets are used the next weekend, but it could be a definite health hazard. Please drain the tank and pipes and open the bypass in the summer just as you do in the winter. The instructions are above the water tank.

### Recognitions

Congratulations to Stan Murdock who just became a Life Member. Stan Joined the club in 1938.

Thanks to Marion Ohr who donated some dish washing equipment to the lodge.

Congratulations also to Mr. and Mrs. Alexis Kelner on the birth of a son, Eric.

### Board Changes

The pressure of business and school has caused our Boating Director, Bruce Christensen to resign his position on the Board.

As a result the position of two other directors were shifted and Ernie Katten was approved as a new director. The lineup is now:

Dave Cook---Boating

Joe Gates---Trips and Outings

Ernie Katten---Trails

Our sincere thanks to Bruce for the work he has done!

#### NEW MEMBERS

Harvey Wood (CR 7-9235)  
2850 Delsa Drive  
Salt Lake City 7, Utah

Keith Edwards (255-3663)  
1950 East 7800 South  
Salt Lake City, Utah

Wayne Newson (AX 5-1829)  
6736 South 100 East  
Bountiful, Utah

Lyman Lewis (CR 7-6816)  
4205 Neptune Drive  
Salt Lake City, Utah

David V. Thornell (IN 7-4260)  
3598 South 950 East  
Salt Lake City, Utah

Burton Janis (466-6088)  
1617 Major Street  
Salt Lake City, Utah

Paul Schettler (DA 2-3010)  
510 M Street  
Salt Lake City, Utah

#### CHANGE OF ADDRESS

John MacDuff (EL 5-2374)  
542 South 11th East  
Salt Lake City, Utah

Dave Sundstrom (EM 4-6143)  
151 North 1330 West  
Salt Lake City 84116, Utah

Barbara Evans  
7652 South 2325 East  
Salt Lake City, Utah

John H. White  
United Technology Center  
P.O. Box 358  
Sunnyvale, California

Edward M. Schneider, MD  
2033 South State  
Salt Lake City, Utah

Russel R. Strite  
1451 Madison Apt. 6  
Denver 6, Colorado