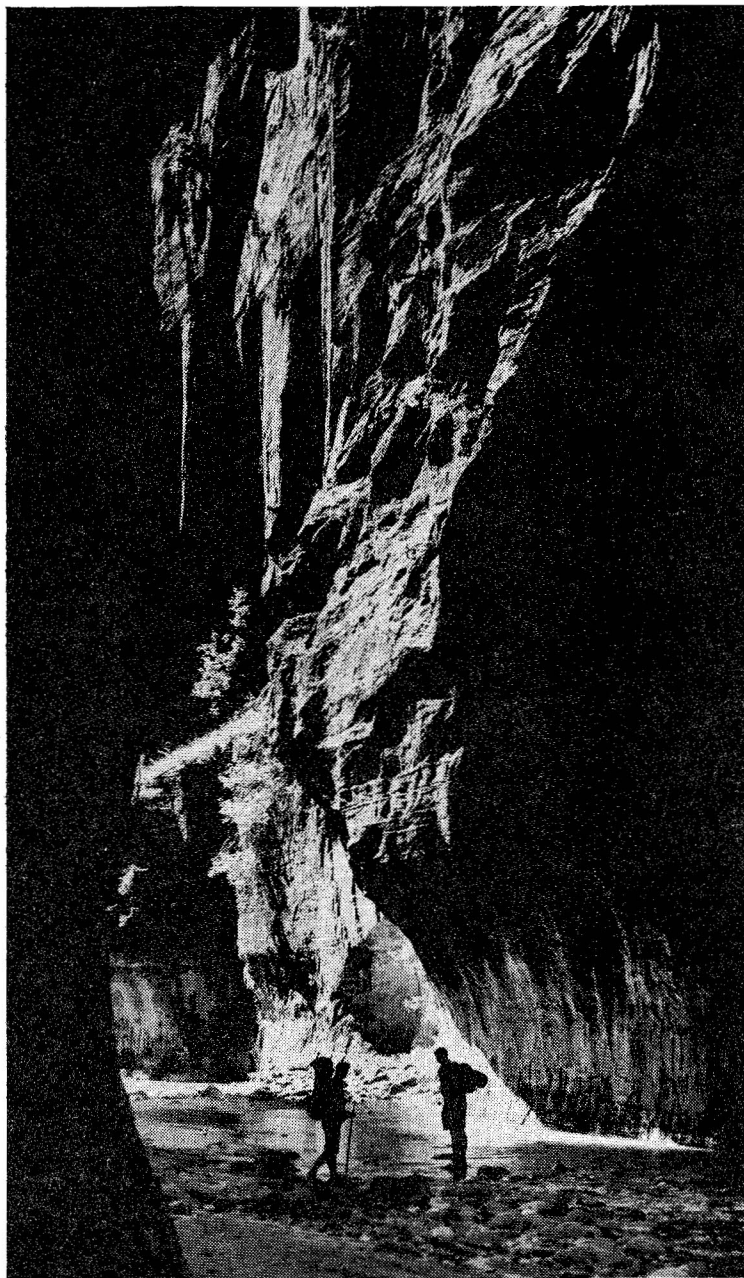


The Rambler

SEPTEMBER 1965



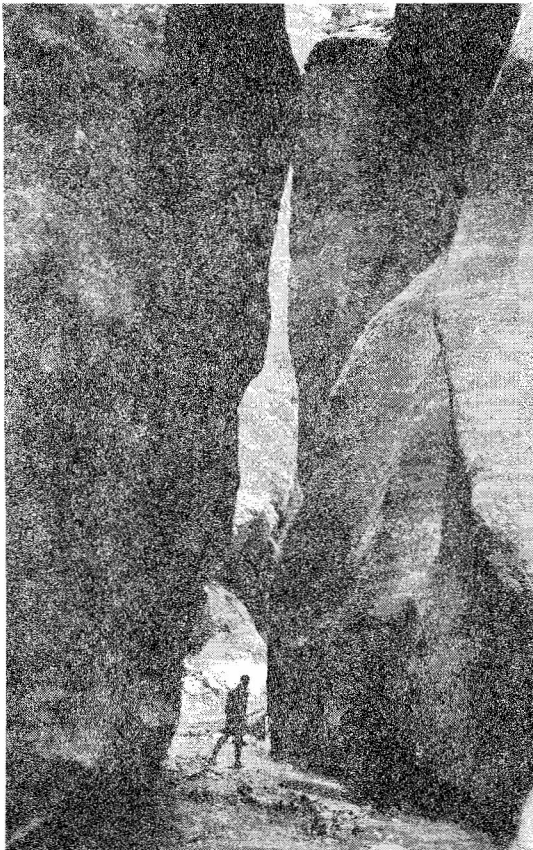
Official Publication
of

THE
WASATCH
MOUNTAIN
CLUB

---dedicated to
enjoyment and
preservation of
the outdoors---

COVER PHOTO by Alexis Kelner shows a portion of the Zion Narrows, one of the most impressive trips made each year by the Wasatch Mountain Club. Few hikes can compare with this completely different walk from Chamberlain's Ranch near the headwaters of the North Fork of the Virgin River to The Temple of Sinawava at the head of Zion Canyon.

The hike starts along the North Fork, through Ponderosa forests. Gradually the walls become higher and narrower, and finally hikers are forced to wade, no matter how hard they try not to. The first real "narrows" is about three miles from Chamberlain's Ranch; the walls rise to 1200 feet. Perhaps the most photographed portion of the narrows is where the canyon walls rise nearly 2500 feet above the Virgin River to the Navajo sandstone of the Markagunt Plateau. Here the walls are only ten feet apart at river level. Geologists figure that it has taken the river 13 million years to carve its way into the sandstone, forming intricate, beautiful patterns and high shelves and niches in the walls.



Within the Narrows of the Virgin River are lush little parks, which should be beautifully colored at the time of year we will be there. From one gorge to the next down the fifteen miles of water and sandstone, keep your camera ready. Perspective changes with every step through the unique Zion Narrows of the Virgin River.

The weekend of October 2 & 3 is set for this year's trip to Zion. See the activities listing for details, and then register right away to be assured of a place on the bus (Remember, you have to be a member to ride on the bus.) One last comment---wear good, ankle-high boots rather than old ones or sneakers. Your feet will thank you at the end of the hike.

CLUB ACTIVITIES FOR SEPTEMBER 1965

Register for all trips at Club Headquarters, 363-7150

Sep 2
Thursday

HIKER'S CLIMBING CLASS-- See "Mountaineering Ramblings" for what will be covered in the class. Meet at Storm Mountain reservoir parking lot at 6:15 pm for the first of three sessions. Register by 6:00 pm. Instructor: Dale Green.

Sep 2
Thursday

CLIMBING AT GATE ROCKS AREA-- Park 1.3 miles up from "Y" intersection in Little Cottonwood Canyon for some climbing on granite.

Sep 3 - 6
Fri. to Mon.

TETON CLIMBING-- Easy to moderately difficult climbing will be done. Base camp will be the Climber's Campground, near Jenny Lake. Register by 6:00 pm, Sep 1.

Sep 4 - 6
Sat. to Mon.

JACKSON, SNAKE RIVER TRIP-- Your last chance this year to go on a club river trip. Along with calm and white water offered in the Jackson area, there is also hiking to be had in the beautiful canyons of the Tetons. A trip will be made into Jackson for those who like to be entertained (?). The work party is Sun., Aug 29, at 1:00 pm at Ann McDonald's home (277-0816). Registration closes Tues., Aug 31. Trip starts Fri., Sep 3, at 7:00 pm. Place of departure to be announced at work party. Price: \$12. Leader: Dave Cook.

Sep 4 - 6
Sat. to Mon.

LODGE OPEN -- Host and hostess over the long weekend will be Sharron and Ed Schneider.

Sep 6
Monday

LAKE DESOLATION FROM MILL CREEK-- From the end of the paved road in Mill Creek, we'll hike up to the ridge, follow the ridge for a short way, then down to Lake Desolation for lunch. We'll return along the N. Fork of Mill D, up to Dog Lake, and down to the cars via Little Water Gulch. (Rating, 7.5.) Leader: To be announced. Register by 6:00 pm Sep 3. Meet at the Red Carpet Inn by 9:00 am.

Sep 9
Thursday

HIKER'S CLIMBING CLASS-- The second of three sessions. See "Mountaineering Ramblings" for details. Meet at Storm Mountain reservoir parking lot at 6:15 pm.

Sep 9
Thursday

CLIMBING AT GATE ROCKS AREA-- Easy to difficult short climbs on good granite. Bring all your gear.

Sep 11 & 12
Sat. & Sun.

LODGE OPEN-- Celia Rockholt will be hostess for this children's weekend. Bring the kids up into the cool, clean air.

Sep 12
Sunday

HAYDEN PEAK-- Here's a golden opportunity for all to get a good view of the Uintas as well as the beautiful fall colors. (Rating 5.0, El. 12,475.) Leader: Dail Ogden. Meet at the Red Carpet at 6:30 am. Register by 6:00 pm Sep 11.

Sep 14
Tuesday

GENERAL BREWING CO. TOUR -- BEER! BEER!-- The first 35 people to REGISTER will be able to enjoy a guided tour of the General Brewing Company, to see how beer is made...FREE BEER...FREE FOOD...hot-dogs boiled in beer. Absolutely free. Meet at General Brewing Company at 7:00 pm (160 S. 10th W.). Absolutely no one that is not registered will be admitted; 35 is the maximum that can be accomodated. Leader: Dale Green.

Sep 16
Thursday

HIKER'S CLIMBING CLASS-- The last class in the fall series. We will probably have another next spring; if you were unable to attend these sessions, be sure to watch for the class next spring.

Sep 16
Thursday

CLIMBING AT GATE ROCKS-- Friction and tiny holds abound up Little Cottonwood Canyon. Better bring an extra sweater or parka, along with your gear.

Sep 18
Saturday

ANNUAL WESTERN PARTY --Gambling, fortune telling, drinking, and all the other vices of the Old West. (Will Madame Sarah be up stairs ??? Come to the party and see!) Our "same kind member" has donated some hard booze, so we will just be charging hard cash for set-ups, and \$1.50 per member for \$150 worth of paper money with which you can buy dinner (if our astute dealers don't get it all away from you) and gamble. DOUBLE FEE if you forget to register. The cooks MUST know how many to prepare for. Time: 8:00 pm. Place: Lodge. Host and hostess: Mr & Mrs Roger Jackson. Register by 6:00 pm Sep 6. Lodge open this weekend.

Sep 19
Sunday

THAYNE TO NEFF'S CANYON -- For those who love the subtle red hues of maple in the fall, Neff's Canyon should fill the bill. (Rating 6.0.) Leader: Roger Jackson. Meet at the Red Carpet at 8:00 am. Register by 6:00 pm Sep 18.

Sep 23
Thursday

CLIMBING AT PETE'S ROCK -- As the days grow shorter, we move back to that deceptive rock at 5400 S. Wasatch Blvd. Everyone is invited for an evening of exercise and relaxation. If you don't climb, come out to watch and to socialize.

Sep 25 & 26
Sat. & Sun.

KINGS PEAK -- One of our longest hikes, into the heart of the Uintas and up Kings Peak, the highest in the state. (Rating 24.0, El. 13,498.) From Henry's Fork campground, where we will meet Fri. night or Sat. morning, depending on when you want to take your licking, we will pack into the base of the peak. Departure time is 8:00 am Sat. On Sun. we will hike and scramble to the summit and then return to the cars. Those not familiar with the campground should check with the leader, Dennis Caldwell. Register by 12:00 noon Fri.

Sep 25 & 26
Sat. & Sun.

LODGE OPEN -- Corinn Gonzales will hostess, we hope (She's in Canada on a canoe trip, at press time). But Dave Sundstrom always opens up anyway, so we can be sure someone will be there to welcome you!

Sep 25
Saturday

CLIMBING IN LITTLE COTTONWOOD CANYON -- Meet at the "Y" at the mouth of the canyon at 9:00 am for a day of enjoyable fall climbing. Register by 6:00 pm Sep 24.

Sep 26
Sunday

RED PINE - WHITE PINE -- One of our finest early fall hikes, to a couple of beautiful lakes. Leader: George Smith. Meet at the "Y" in Little Cottonwood Canyon at 8:00 am. Register by 6:00 pm Sep 25.

Sep 30
Thursday

CLIMBING AT PETE'S ROCK -- This is "climb with no hands" evening. If Royal Robbins can climb Route 5 without using his hands, you can, too....or at least try Route 3; get T. Q. to show you how to hop up it on one foot. No suction cups or gyroscopes allowed. You non-climbing socializers should come out to cheer on the hard workers.

Oct 1 - 3
Fri. to Sun.

ZION PARK CLIMBING.-- While those wet-backs with the wet feet get even wetter, we'll stay dry and do a little scrambling. Sandstone climbing is entirely different but quite rewarding as any sandstone crag rat can testify. For further info on objectives, contact Tom Stevenson before Sep 28. All climbers must register with him by that date.

Oct 2 & 3
Sat. & Sun.

ZION NARROWS-- One of the most impressive and different trips made each year by the club is in the back country of Zion National Park. We start at Chamberlain's Ranch near the headwaters of the North Fork of the Virgin River and hop back and forth across the stream bed amidst the falling red leaves of mountain maple. Saturday night we camp at a cave with spring water nearby. Sunday we'll eat an early breakfast and wade the stream between towering canyon walls only a few feet apart, arriving at the Temple of Sinawava about noon. Since the bus is usually filled for this trip, your registration and place on the bus is not assured until your check of \$10 is received at Club Headquarters. Leader: Dale Green. The bus will leave at 7:00 pm Fri. from the head of 5340 Cottonwood Lane. Cars may be parked in Clint Barker's field. Registration closes Thus., Sep 30, at 6:00 pm.

Oct 2
Saturday

MT. AIRE -- A favorite Mill Creek hike which should catch the fall colors at their prime. (Rating 3.0.) Leader: Ralph Hathaway. Meet at the Red Carpet at 8:00 am. Register by 6:00 pm Oct 1.

Oct 10
Sunday

WOOD GATHERING PARTY -- The pleasant warmth of next winter's fires in the lodge fireplace will come from logs gathered and stored this weekend. In addition to usual firegathering equipment, trucks, chainsaws, axes, etc, bring hammers to use for general lodge repair work. Register by 6:00 pm Oct 8 to be included for lunch. Work begins at 9:00 am.

Oct 13
Wednesday

GENERAL MEMBERSHIP MEETING-- Come up to the Brighton WMC Lodge for an evening of visiting and entertainment. Harold Goodro will present a slide show of his recent expedition to the Andes, which, knowing Harold, will be fascinating. Some major changes to the Constitution will also be voted on.

Oct 15 - 17
Fri. to Sun. **SHIPROCK** -- Need more be said? This is one of the classics in American rock climbing. The climb is not easy, but at the same time it isn't impossible, and it's worth the effort to scale it. Those climbers interested should contact Tom Stevenson no later than 6:00 pm Oct 12.

Oct 15 - 17
Fri. to Sun. **GRAND CANYON RIM TO RIM**-- Here's your chance to hike from the North Rim of the Grand Canyon to the South Rim. The bus will depart Thurs. night, and we will arrive about 5:00 am Fri. morning at the North Rim Campground. We will descent 5700 feet into the canyon via the North Kaibab trail through Roaring Springs Canyon and along Bright Angel Creek. An interesting side trip to Ribbon Falls will be taken and we'll stop for the night at Phantom Ranch campground. (It's $14\frac{1}{2}$ miles, all down hill.) Sat. will be an easy day with a pleasant $2\frac{1}{2}$ mile jaunt along the inner gorge of the Colorado River, then a $3\frac{1}{2}$ mile, 1400-foot climb to Indian Gardens campground where the afternoon may be spent relaxing among the Cottonwoods or hiking as one pleases. Sun. we'll have an early breakfast, then start our 3200-foot, $4\frac{1}{2}$ -mile climb to the South Rim, stopping frequently for the best views of the canyon along the Bright Angel trail. We will return to SLC Sun. night. Leader: Bob Demint. The bus will probably fill up early, so registration will be on a paid-in-advance basis only. \$15 trip fee.

Oct 30 **HALLOWEEN PARTY** -- With Clix Byrne's spook alley, we hope.

NOTICE TO HIKING HOUSEWIVES

Grace Ormsby would like other wives interested in hiking to join her on Tuesdays or Wednesdays for hikes during the fall months. Those interested please call Grace at 364-4465. She lives at 1319 West 10th North.

WANT A KELTY PACK?

Here's your chance to get one at a special price. A group purchase order for five or more complete packs (frame & bag) qualifies for a 10 per cent discount. This offer is subject to cancellation at any time, so if you are interested, contact Sarah Weller before September 10 for an immediate order. Shipment is to one address only. Sarah has a Kelty catalog from which to pick the outfit you want.

NORTH EAST RIDGE OF MT. MORAN

by Steve Swanson

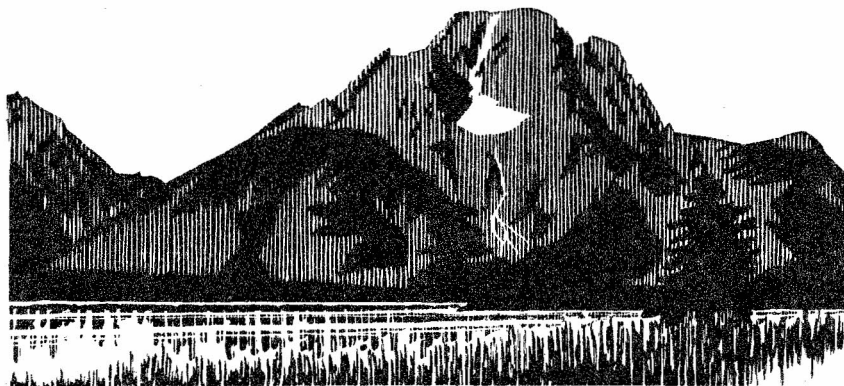
On the weekend of August 14 & 15, four mountain climbers returned to the slopes of Mt. Moran to try once again for its summit, avenging the "failures of the 4th". Attempts made on the 4th of July weekend were forced down by rain, snow, and lightening.

Our climb started in proper fashion at the "Jolly Roger" in Evanston Friday night, and it was carried forward in high spirits from that point on. After a leisurely hike to the Skillet Glacier base camp, we spent Saturday mastering the boulders in the adjacent boulder field. "Hovingh's Corner Route" proved to be the undoing of the author, much to the detriment of elbow skin. The resulting antics provided great hilarity and general merriment to the rest of the group, however.

A 2:30 am Sunday start up the N. E. Ridge was made by the light of a full moon, which greatly enhanced the beauty of the surrounding mountains and Jackson Lake. The N. E. Ridge itself was quite easy, although long. The main technical problem was restraining Pete from proceeding at a pace somewhat akin to a run. We took pictures and ate lunches all the way up, and finally achieved the summit about 11:30 am.

A descent was made down the Skillet Glacier, which, incidentally, has a nice angle near the top. Belaying was necessary because of the relatively narrow couloir forming the skillet handle, and particularly because an enormous bergshrund had developed next to the rock island. The hike out was made in somewhat less leisurely fashion than the trip in. The moon cleverly concealed itself until we were back at the String Lake parking area, about 9:00 pm. We arrived in Salt Lake in the wee hours of the morning.

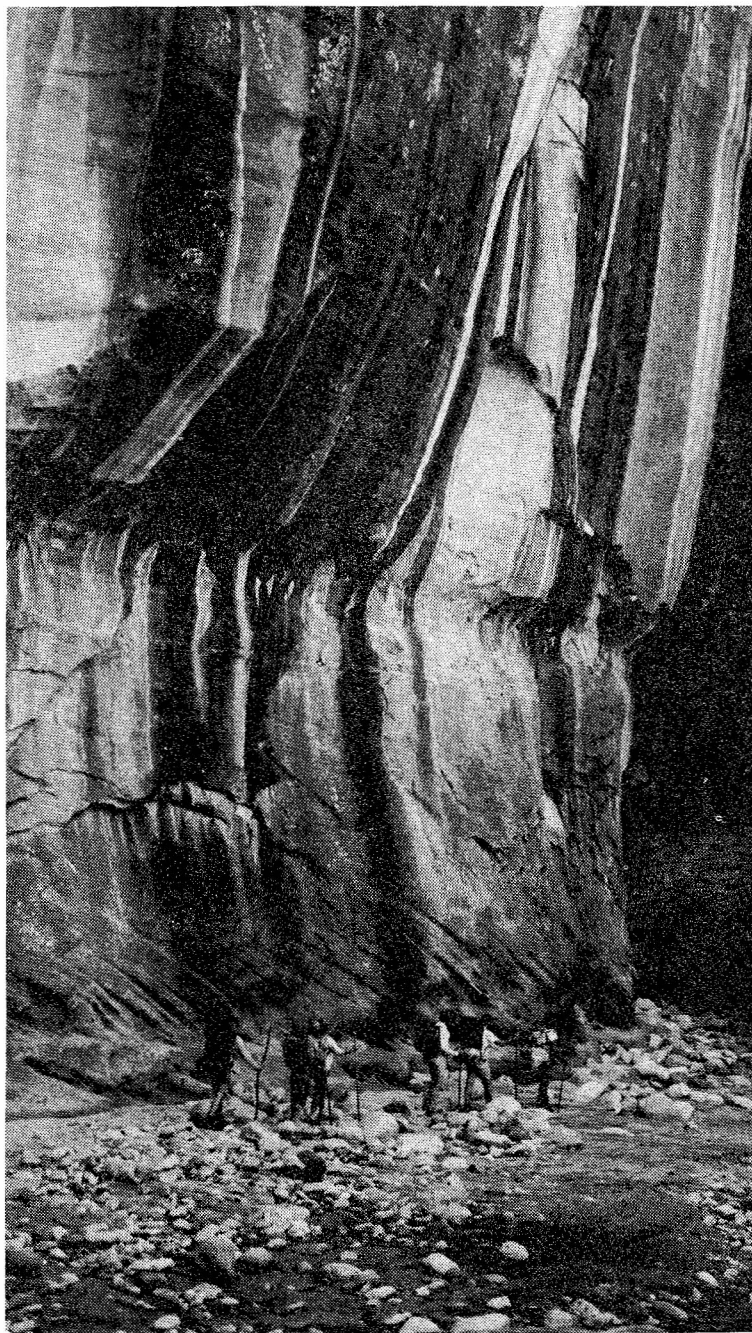
Those on the climb were Pete Hovingh, Jack McLellan, Phil Novak, and Steve Swanson.



MT. MORAN



SUNRISE ON THE SKILLET GLACIER, MT. MORAN, JULY 4TH, 1965
(Photo by Jack McLellan)



THE SPECTACULAR ZION NARROWS OF THE VIRGIN RIVER
(Photo by Alexis Kelner)

Steve Swanson has successfully completed all requirements for graduation from the Beginning Climbing Course. He is the first graduate from the course. Another testing session is scheduled for early September, at one of the Thursday night get-togethers. Contact Tom Stevenson to register for testing.

Jack McLellan has been accepted in the ranks as a Mountaineer after much practice and hard work. Congratulations.

Hiker's Climbing Course. Another Hiker's Climbing Course will be offered this month. It will be similar to our April course, which enrolled more than a score. We felt that it was very helpful to new hikers, and a good review for the more experienced ones. The course is specifically designed for those who want to know the following:

What to take with them on hikes.

How to hike better and more easily.

--What it is and how to find "your" pace.

--What it is and how to use the rest step.

How to cope with short rock scrambles.

--Use of balance on the rock.

--Use of hands and feet.

The simplest of fundamentals of roped climbing.

--Two knots.

--Simple belays.

--Climbing calls.

--A rappel.

Dangers encountered in the mountains, and how to cope with or prevent them.

All hikers, everyone from 6 to 60, are urged to come out and enjoy this three-session course. The first class will be Thursday, September 2, at 6:15 pm. Meet at the reservoir parking area at Storm Mountain Picnic Grounds. Register by 6:00 pm August 31. The instructor is Dale Green. No fees will be charged and only rubber soled shoes are required. All special gear will be furnished by the club. Class periods will be on successive Thursday evenings.

MEMBERSHIP CONTEST

The first month of our membership contest turned out to be one of the slowest summer months in years. Only four new members submitted applications. The credits go to Leon Edwards (3) and Fred Bruenger (1).

Starting September 1st, half-year dues take effect. This means only \$3 dues and \$2 membership fee, a \$5 total, are required. We will soon have some new brochures printed in color to help interest prospective members. These will be available from the Membership Director.

LONE PEAK BY WAY OF CORNER CANYON,
or, Assault by the Magnificent Seven

by Art Whitehead

Saturday night it had rained hard. Sunday morning, July 25th, was wet with the promise of more rain to follow. In spite of the weather, seven of the ten registered hikers showed up determined to climb Lone Peak. One of the seven was Alexis Kelner who really showed up to tell the leader (Pat Caywood) that he couldn't make it and was going back to bed. He did offer to drive us up to Corner Canyon. Said he had just finished doing some work on his jeep and wanted to give it a real test hop.

We all piled in and started up. The jeep performed very well. We kept climbing up and up. For awhile we thought we were going to ride right up to the peak. Finally the jeep came to a halt, and we all got out, including Alexis, dress shoes, sports clothes and all. Said he just couldn't pass up the climb on what he said was his favorite mountain in the Wasatch. We started up on foot at 8:20 am and reached the summit by 12:30 pm. From the peak we could see for about ten feet in all directions, so we signed the register and had lunch. Forty-five minutes later everyone was well chilled so we started back down. We made good time on the descent, one step ahead of the rain. Then we lost that step and the rain hit us. The rain beat at us for about fifteen minutes as we bush-whacked through scrub oak. We reached the jeep wet and tired around 4:30 pm and started the ride down. The ride became too boring for the driver, so he cut the wheel and headed for sage and brush. The jeep really showed what it could do. It climbed, plowed and pushed its way over boulders, brush and anything that got in its way. Alexis seemed pleased and the rest of us kind of uneasy.

Finally, to the relief of most of us, the jeep got back on the road and soon we reached the outskirts of Draper. Then the mighty jeep's motor died. Earlier I had mentioned to Alexis that the fuel gauge read empty. "That means it's half full", I was told. The six of us were ordered out to push. Alexis stayed behind the wheel like the captain going down with his ship. We pushed all the way through Draper looking for a gas station that was open; we finally found one on the other side of town. We gassed up--the jeep with gasoline and the rest of us with soft drinks. So ended an interesting and enjoyable trip.

Hikers were Pat Caywood (leader), Richard Stenerson, Alexis Kelner, Gerry Goodro, Dick Leining, Bill Manwaring, and Art Whitehead

At the last Board of Directors meeting, the proposed "Spouse Membership", as defined in the July issue of The Rambler, was approved by a unanimous vote. The appropriate By-law changes will be made soon to implement the new membership addition. Spouse membership will become official at that time. To reiterate, spouse's annual dues will be \$3 with no entrance fee. The only requirement is to be the spouse of a member. A spouse member will be able to vote and hold office. They will pay member fees for social functions, ride on the bus, and receive a patch. They will not receive a Rambler.

The proposed "Junior Membership" was also approved by the board with one change from the July listing; junior members must be between 16 and 18 years old, not 15 as was indicated. Again to reiterate, junior dues will be \$4 with entrance fee of \$2. They must attend three outings, be sponsored by a regular member over 21 years old and who has been a member for over one year, and participate in one work party or service function either before application or during the probationary period. They will be able to vote, receive The Rambler, receive a patch, pay member fees for social functions, and ride on the bus. Attendance will be controlled on some trips and parties as is presently done. Total junior membership will be limited to 10 per cent of the total club membership. They will be placed on a strict six-month probationary period.

Final approval for junior membership rests with the general membership, since several Constitutional changes are required. This will be brought to a vote in the October general membership meeting.

TIMPANOGOS HIKE

by Pete Hovingh

After the annual BYU hike was cancelled because of snow conditions, and after a refreshing rain (for those who chose to camp on the Timp), a group of hares (led by S. W.) and turtles started up the Timpooneke trail on 18 July 1965. Clouds moved in, in a Pacific NW fashion all morning.

The entire group ascended to the basin and snow fields at the base of the Timp's ridges, passing en route many varieties of wild flowers. Some continued to ascend through the clouds to the peak. From the top an occasional "spotlight" view of the valley was seen, with the little fluffy clouds moving as a curtain across the stage and finally bumping into the mountain. After lunch the group drifted down, utilizing the snow where possible. The entire trip was completed without rains and floods or dust and locust.

Those attending were Billings Brown, Dick Zeamer, Dick Leining, Richard Stenerson, Sarah Weller, Dan Clinkenbeard, Boone Newson, Jan and Carmen Orosz, John MacDuff, Jerry Goodro, Peter Hovingh, Betty Bottcher, Helen Bessey, and Lucy Hoelscher.

articles as little as possible, and yet doing what I considered necessary to bring you a fairly good magazine in the short time I have to prepare it. If, when you submit an article, you want something special left as-is, or some bit of "cuteness" left exactly as you have it, just put a little note on the page.

Please don't let all this editing talk scare you off from submitting articles. It's just that I want to make my position perfectly clear--that because of space, layout, and quality considerations, I may have to change an article slightly; no more. I will leave it as close to the original as possible. Enough said about that.

Supplement to 1965 Membership List. Included with this issue is a membership list supplement. New members, reinstated members, and all changes and corrections reported to me are included in the list. Please let me know as soon as possible of changes in address or corrections so the list can be kept up to date. Remember, with the third class type of mailing we are now using, your Rambler will not be forwarded.

Summit magazine, July/August issue, has a very interesting article on "Mountaineering Medicine", by Fred T. Darvill, Jr., M.D. Reprints are available in small booklet form (suitable for carrying in a pack or pocket) for \$1.00. They may be obtained from either the Skagit Mountain Rescue Unit, P.O. Box 2, Mt. Vernon, Washington, or from Summit, P.O. Box 888, Big Bear Lake, California.

THE WASATCH MOUNTAIN CLUB

Club Headquarters: 425 South 8th West, Salt Lake City, Utah
Telephone 363-7150

Lodge at Brighton, Utah

DIRECTORS

DALE GREEN, President	277-6417
TOM STEVENSON, Vice President	364-5268
BETTY BOTCHER, Secretary	364-6766
DENNIS CALDWELL, Treasurer	466-6578
DAVE COOK, Boating	355-4086
PAUL SCHETTLER, Conservation	322-3010
BOB DEMINT, Hiking and Trails	277-5056
ROGER JACKSON, Lodge	322-0751
SARAH WELLER, Membership	355-4269
TOM STEVENSON, Mountaineering	364-5268
JACK McLELLAN, Publications	277-7214
ANN McDONALD, Entertainment and Recreation	277-0816
ALEXIS KELNER, Ski Mountaineering	359-5387
GEORGE SMITH, Transportation	484-9873

Mountain Climbing and Camping Equipment

TRY

Star-Life by Armour



--- IT'S FREEZE DRIED ---



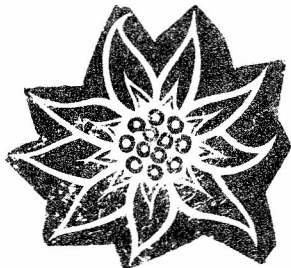
THE MOUNTAINEER

Steve Ellsworth 207 South 13th East
Phone 363-6559 Salt Lake City, Utah

PLEASE NOTE: WE HAVE MOVED TO
2959 HIGHLAND DRIVE PHONE 466-2101

THE MOUNTAIN SHOP

"Salt Lake's Least Outrageous Prices"



Alp Sport

EQUIPMENT

ADVERTISEMENT FOR GRAND CANYON TRIP ** (ALSO COTTONWOOD BOOKS)

Anyone who saw "The Grand Canyon" on TV not too long ago will remember the fascinating narration by Joseph Wood Krutch. The basis for the beautiful and informative show was Mr. Krutch's book, Grand Canyon, available in paperback form at your favorite paperback bookstore in the lower level of the Cottonwood Mall.

Grand Canyon is not a "travel" book as such. It is the culmination of many years of study and enjoyment by a man who is a philosopher as well as a naturalist...an excellent writer who is also a scholar.

The Grand Canyon affects different people in different ways. "On my first visit", writes Krutch, "a fellow traveler took one look and then ran back to throw his arms around a tree. When I saw him last, he was desperately resisting the efforts of two women companions to pry him loose." Some people, alas, do not take kindly to so much empty space.

The intrinsic value of the writings of Joseph Krutch lies in the fact that he is first of all a philosopher. He is not a "nature lover" as such; the world of nature is, rather, part of his world. He is a conservationist without hysteria...a man looking for the nature of man and his desires and needs.

Grand Canyon is a beautifully written book, and one that belongs in the library of anyone who would like to "see the canyon in width and depth, not merely in space as the tourist on the rim sees it, but time, values and proportion."

Along with the study of the Grand Canyon should come a knowledge of the Havasupai, People of the Blue Green Water. Havasupai Canyon by Joseph Wampler, is an illustrated guide and information book about the life and living conditions in beautiful Havasu Canyon. The book tells a little of the geology of the canyon and also of the flowers, birds, and animals found there. It discusses the history of the Indians and their present day life in the village of Supai.

Several possible trips into the canyon are given in detail, both hiking and packing. Road and trail conditions are given, as are the supplies needed to get you to the departure point.

Throughout the book, the beauty of Havasu Canyon keeps cropping up. The creek...the falls...the little water-cress lined pools.

(Before you take off to hitch hike to the Grand Canyon and the beauties of Havasu, stop in at Cottonwood Books in the Mall and tuck a few copies of the books in your knapsack--you'll need them on the October WMC excursion to the Canyon.) Ann would like to give them away free, but since her children have contracted the habit of eating, she will have to ask that money pass hands when you choose a book. That's life.

WASATCH MOUNTAIN CLUB
425 South 8th West
Salt Lake City, Utah 84104

RETURN REQUESTED



WASATCH MOUNTAIN CLUB, INC.

Application for Membership

To Board of Directors:

I hereby apply for membership in the Wasatch Mountain Club. I enclose \$2.00 entrance fee and \$6.00 annual dues. The scheduled event I have attended is _____ on _____ (approx. date). I agree to abide by all rules and regulations of the club.

Name: _____	Recommended by: _____
Address: _____	Member: _____
City: _____	Director: _____
State: _____	_____
Zip Code: _____	_____