

JUNE 1966

Official Publication  
of

THE

WASATCH

MOUNTAIN CLUB

Salt Lake City, Utah

*The Rambler*

## CLUB ACTIVITIES FOR JUNE 1966

Register for all trips at Club Headquarters, 363-7150

- Jun 4      P F E I F F E R H O R N - R E D P I N E L A K E H I K E  
Sat.      Red Pine Lake, one of the most beautiful lakes in the Wasatch, is reached by a trail with a fascinating view of Little Cottonwood Canyon. If you are reluctant to try the Pfeifferhorn, go as far as the lake and wait until the others return. Red Pine Lake rating is 4.5. Pfeifferhorn rating is 10.0, Elev. 11,326. Meet at the mouth of Little Cottonwood Canyon at 7:30 am. Register before 6:00 pm Jun 4. Leader: George Smith.
- Jun 4      L O D G E O P E N -- Spend a relaxing evening at the lodge. Bring steaks or whatever to charcoal. Catch a bit of that wonderful mountain air and panoramic view. Stay over for the Sun. work party! Host, Roger Jackson.
- Jun 5      L O D G E W O R K P A R T Y -- During the past ski season, our lodge was used almost every weekend by members or rentals. The lodge now needs a very thorough cleaning for the summer season. The WMC needs YOU to help. As members of a cooperative club, please bring your cooperative shovels, mops, buckets, hammers, etc. LUNCH FOR WORKERS-- but to eat, you must register by 6:00 pm Jun 4.
- Jun 9      C L I M B I N G A T S T O R M M O U N T A I N -- All  
Thur.      are invited; climbers, hikers, socializers, curiosity seekers. Burgers, beer, & soft drinks served about dark. Meet on north side of the reservoir, by concrete wall at west end of parking lot. Registration not necessary.
- Jun 11 & 12      E S C A L A N T E - C A L F C R E E K T R I P -- A new  
Sat. & Sun.      bus and back-pack trip to introduce more WMC members to the Escalante River Canyons. Starting at the town of Escalante, the two-day hike will take us through 15 miles of the upper canyon. On this trip we'll venture through the deep, cool pools in Death Hollow, see Outlaw Natural Bridge, a large wall arch and several Indian ruins, not to mention interesting Escalante Canyon itself. Cactus should be in bloom to add extra color to the trip. Be prepared for wet hiking. Bus fare is \$12.00. Register before 6:00 pm Jun 8. Bus leaves Fri. Jun 10 at 7:00 pm. Place of departure will be announced upon registering. Leader: C. L. Keller.

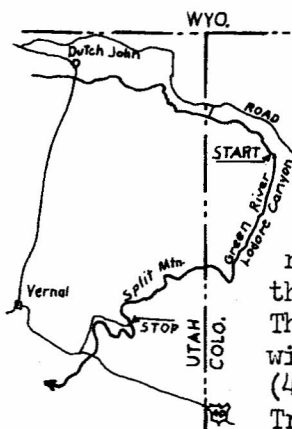
COVER PHOTO: North Face of the Grand Teton, by Alexis Kelner.

- Jun 11 & 12  
Sat. & Sun. CLIMBING ON LONE PEAK -- Camp overnight in the beautiful cirque area. All types of routes, from easy to very difficult. Call T. Q. Stevenson (364-5268) for more information, and to register.
- Jun 11 & 12  
Sat. & Sun. CHILDREN'S WEEKEND AT LODGE -- We plan to have several children's weekends this season. Bring the kids for some great fun away from the city. Celia Rockholt will be hostess for this weekend.
- Jun 12  
Sun. M.T. MILLICENT -- Rating, 3.5. Elev., 10,425. Meet at lodge at 9:00 am. Register by 5:00 pm Jun 11.
- Jun 16  
Thur. CLIMBING AT STORM MOUNTAIN -- Everyone come out. Beginning climbers are encouraged to get with one of the mountaineering leaders and request some informal instruction.
- Jun 18 & 19  
Sat. & Sun. HOGUM FORK MOUNTAINEERING CAMP This is a relatively unexplored area, as far as climbing routes are concerned. Call Dave Allen (278-0230) for details, and to register.
- Jun 18 & 19  
Sat. & Sun. LODGE OPEN -- Slide showing, lodge cooking, weekend fun, all wrapped into one. Bring some of the glorious wonders you have captured on film throughout your travels. Bring food to cook. Congeniality at its best provided by hostess Jane Daurelle.
- Jun 18  
Sat. LAKE DESOLATION HIKE -- Another in the series of hikes especially for beginning hikers and non-members. Before the hike, some tips on the mechanics of hiking will be given to prepare you for this short hike, and to enable you to enjoy longer and harder hikes in the future. Bring friends and prospective members. Meet at mouth of Big Cottonwood Canyon at 9:00 am. Leader: Dale Green.
- Jun 19  
Sun. BRIGHTON RIDGE RUN -- On this hike we'll follow the ridge from Snake Creek Pass to Mt. Millicent, crossing two unnamed and five named peaks enroute (Pioneer, Sunset, Tuscarora, Wolverine, and Millicent). Those who don't care to take the entire trip can drop out at Katherine Pass and follow the trail back down to the lodge. Meet at the lodge at 8:30 am. Register before 5:00 pm Jun 18. Leader: C. L. Keller.

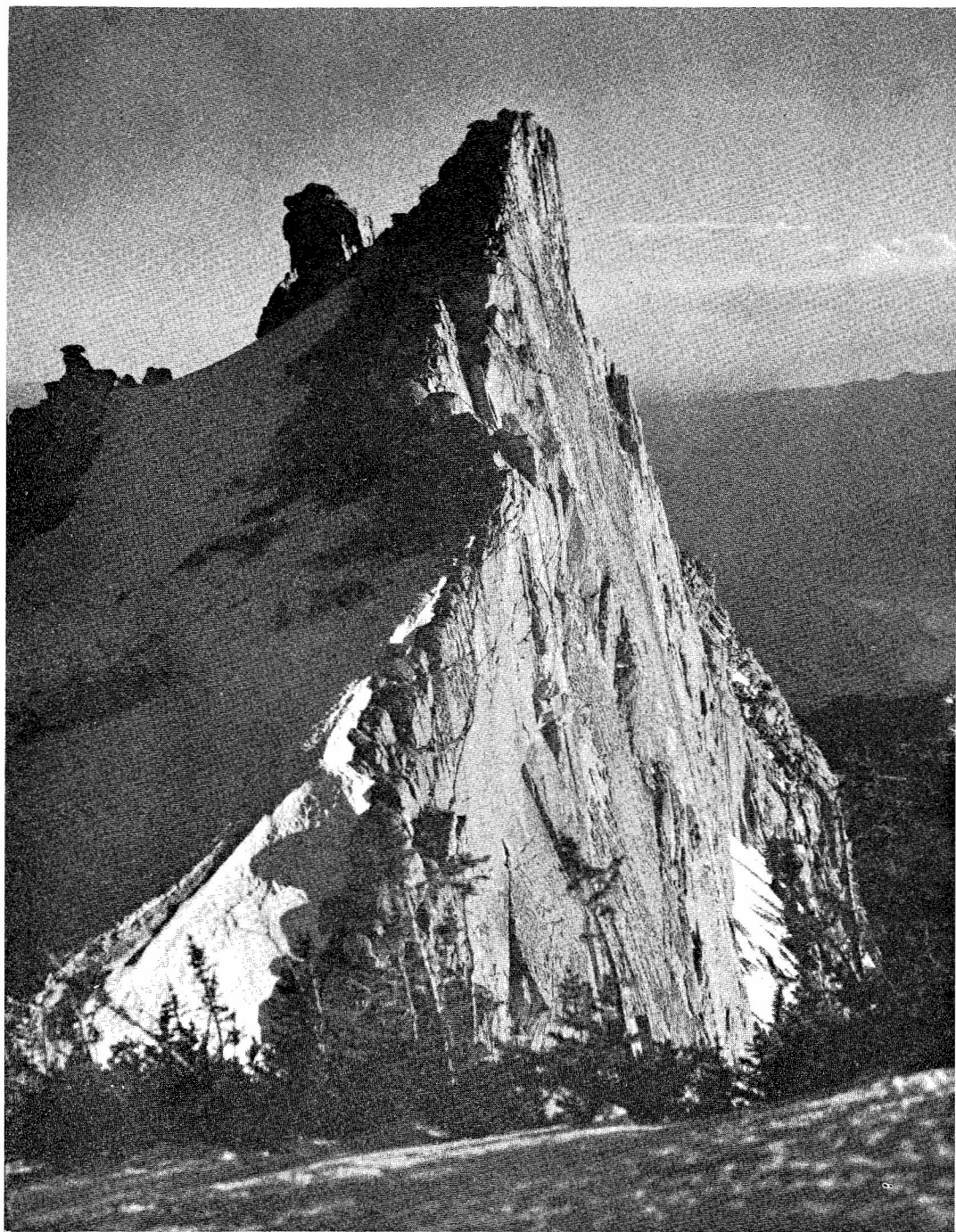
- Jun 23  
Thur. CLIMBING AT GATE ROCKS -- Try some friction and small holds on the large boulders about one and a half miles up Little Cottonwood Canyon. Hikers, scramblers, watchers welcome.
- Jun 25  
Sat. M.T. BALDY FROM ALBION BASIN -- Meet at mouth of Little Cottonwood Canyon at 8:00 am. Rating 3.5. Elev., 11,068. Register before 6:00 pm Jun 24. Leader: Earl Hansen.
- Jun 26  
Sun. TWIN PEAKS -- Former member Kane Alder is returning to the club to lead this trip. Kane advises us that this will be his fiftieth (50th), yes fiftieth ascent of the Twins. How about that? Rating, 10.5. Elev. 11,320. Meet at the S-curve in Big Cottonwood Canyon at 6:30 am. Register by 5:00 pm Jun 25.
- Jun 25 & 26  
Sat. & Sun. FAMILY WEEKEND -- The Viavant's are planning a number of activities for real family fun. Anyone that can toot, whistle, boom, or even sing, bring your talent for an evening of rare talent after a fine barbecue on Sat. Bring some folk records (or live music) to set a lively mood. On Sun., a family hike will await the enthusiasts. Time and place can be obtained from Bill or June Viavant (364-9684).
- Jun 26  
Sun. EXPERIENCE CLIMB -- On Mule Hollow Wall. Meet at Storm Mountain upper parking lot. Call Dave Allen for details (278-0230)
- Jun 30  
Thur. CLIMBING AT STORM MOUNTAIN -- Back to the quartzite for high-angle rock and bucket holds. Beginners and beginner-beginners welcome.
- Jul 1 - 4  
Fri. - Mon. CLIMB OF MT. RAINIER -- Contact Harold Goodro, leader, for more information (277-1247).
- Jul 2 - 4  
Sat. - Mon. CLIMBING AND HIKING, TETONS -- For those who can't make the Rainier trip. Contact Dave Allen, leader, for details (278-0230).
- Jul 2  
Sat. SUGAR LOAF HIKE -- From Albion Basin. A fairly short hike to the peak above Secret Lake. Rating is 3.5. Elev. 11,051. Meet at mouth of Little Cottonwood Canyon at 8:00 am. Register before 6:00 pm Jul 1.



- Jul 2 - 4 LODORE & SPLIT MTN. RIVER TRIP --  
 Sat. - Mon. Another new trip for the club. A few of our members have been through Lodore, but this will be the first time for a large group. The canyon, located in the northern part of Dinosaur Nat. Park, is a spectacular gorge cutting across the eastern end of the Uintah Mtns. The scenery is somewhat like the Yampa area, with high cliffs and lots of color. The rapids are in the 8 to 10 class -- which, in the words of the layman, is "very, very rough". This information is not given to discourage the individual with little river experience, however. The rapids can be portaged if desired. Work party will be Sun. Jun 26 at 1:00 pm, at the ice plant (430 W. 2nd N.) Registration closes Tues. Jun 28. Trip begins Fri. Jul 1 at 7:00 pm. Place of departure will be announced at the work party. Price: \$25. Leader: Carl Bauer (355-6036).



- Jul 3 MT. TUSCARORA - MT. WOLVERINE HIKE  
 Sun. From Albion Basin. This hike takes us to Katherine Pass and then over the two peaks. Mt. Wolverine is 10,795 ft. high. Meet at mouth of Little Cottonwood Canyon at 7:30 am. Register before 5:00 pm Jul 3.
- Jul 4 MT. SUPERIOR FROM ALTA -- Meet at mouth  
 Mon. of Little Cottonwood Canyon at 7:00 am. Rating 5.0. Elev. 11,132. Register by 5:00 pm Jul 2.
- Jul 3 & 4 LODGE OPEN -- Get away from hectic city life and  
 Sun. & Mon. traffic over the Independence Day weekend and join host Steve Cole for a weekend of superb hospitality.  
 WE NEED HOSTS AND HOSTESSES FOR JULY, AUGUST, AND SEPTEMBER. IF YOU FEEL A BURNING DESIRE IN YOUR COOPERATIVE HEARTS TO HELP, PLEASE CALL SARAH WELLER (466-7325) FOR DETAILS.
- July 13 GENERAL MEMBERSHIP MEETING --  
 Wed. We'll elect (or re-elect) a Trustee, among other things.
- Jul 23 - 30 MAIN CHANNEL OF SALMON RIVER --  
 If you are interested in this trip, please contact Dave Cook for information and reservations. This river trip will have a minimum and maximum number of persons that can go, because of the transportation problems involved.
- Jul 23 - 25 WIND RIVER RANGE -- Leader: Dave Allen
- Sep 3 - 5 JACKSON, SNAKE RIVER TRIP --



North-facing Wall, South Side of Lone Peak Cirque

by A. Kelner

Twenty-eight people and several hundred pounds of gear left the usual spot about 7:15, April 29. The miles rolled past with Dale Green, MacDuff, and Jerry Poulsen guiding the bus through a beautiful 3/4 moon-lighted night. A coffeeless rest stop was made at Price and then non-stop to the river, arriving about 4:00 a.m. By then most people were so well-adjusted to bus sleeping that only ten thought it worthwhile to set up their gear for outdoor sleeping. They were disturbed by the friendliness of a dirty, lonesome cat. Peter Hovingh had driven his car down to ferry the bus driver and was comfortably sleeping when the bus arrived.

Breakfast was prepared by true Wasatch Mountain Clubbers while a couple of softies walked across the bridge to the Aneth Cafe. MacDuff improved his usual Metrecal diet with breakfast AND lunch at a cafe. (Should the club make a rule governing such behavior?) With the usual dispatch the rafts were blown up, gear loaded, and captains appointed. These captains were given authority to bury, but emphatically not to marry, at sea. (Suggestion: No one may be a captain until he has proven that he knows right from left.)

The day passed pleasantly with generally smooth, but fast-moving water and far vistas. A stop was made to visit a well-preserved, little vandalized cliff dwelling. All seventeen rooms were thoroughly explored and rock work and decorations admired. Other dwellings were visible from the river and three boats stopped to explore one more, and to take a close look at petroglyphs. The lead boat picked up Pete and MacDuff near Bluff, whence Pete had unknowingly transported the cat with a scary ride under the hood. He had locked his car, thinking some friend(?) might try to stow her away in it.

The crew fortunate enough to be with Dale Green was greatly enlightened by short readings from a book which had come by special delivery just before the bus left. So great was the effect of these readings that only short sections at a time could be read aloud by Dale or absorbed by the crew. Generously Dale shared it with the larger group around the evening campfire.

With furious paddling each boat crossed the current to a campsite under trees above a sandy beach where no animals, friendly or otherwise, disturbed good sleeping.

Soon after embarkation Sunday morning the rafts went through rapids that made up for lack of Saturday night baths. These continued at intervals all morning. The river narrowed between canyon walls, which while not spectacularly high, were interesting in color, stratification, and fracturing. At mid-morning stop clam fossils were discovered.

An old iron pot found here was a happier indication of man's previous presence than the usual beer cans.

A safe landing was made at Mexican Hat after MacDuff's stern warning, "Don't go on under the bridge or you won't be able to get off the river till Lake Powell." The boats were deflated and loaded in an hour. Dinner was eaten at Moab in the usual 60-minute half hour. We recommend the San Juan as a good trip for beginners, but interesting enough for even Westwater-ers.

---

May 8, 1966

From: JOHN STAPLES

Dear Friends,

Living in the state of California for the past year has made me acutely aware of the almost overwhelming conservation problems facing those few of us who ascribe to the point of view that "nature is at its best when left completely alone". Here in California one tends to become somewhat paranoid about flagrant disregard for our scenic and, in fact, health future. More and more of San Francisco Bay is filled in daily, either with garbage or what was once a hill covered with wild grasses and poppies. The chain saws continue to eat away at our living link with the past--the Redwood tree. Those of us who resent these developments bear a major responsibility for making ourselves a vocal and well-organized "opposition".

The point of this letter is to remind you back there in Utah that the same things are happening to some of the areas you enjoy. I refer specifically to the proposed dam in Grand Canyon. Any of you who are interested will find an excellent discussion on this threat to the Canyon in the May issue of the Sierra Club Bulletin. I still find pleasure in being a member of the Wasatch Mountain Club and would like to suggest that we all spend a little more time (including pages in the "Rambler") on conservation problems. Be assured that those who advocate strip mining, "multiple use", etc. are well-organized and considerably skillful at accomplishing their objectives.

Sincerely,

s/John H. Staples

Salt Lake City, Utah  
May 5, 1966

The Editor  
"Rambler"  
Wasatch Mountain Club  
Salt Lake City, Utah

Dear Sir:

The Wasatch Mountain Club has been very active in the preservation of the outdoors. During a recent river trip (San Juan), I was greatly disappointed in the manner in which a number of the members of the club behaved with regard to the disposal of garbage and trash. Cans were thrown into the river, cans and even glass bottles were buried instead of being carried out. No attempt was made by senior members of the club to see that the camp was left in a proper condition.

What was even worse was the extensive "souvenir hunting" in the Indian ruins carried out by some members. This seems to me to be a violation of the basic and sound principles of conservation and archeology. Certainly members of our club should not indulge in such activities.

Truly yours,

s/Aroop Mangalik

Aroop Mangalik, M. D.

---

Editor's Note: The above letter from Dr. Mangalik really "hits home". So we're a conservation club, huh--. Some may argue, "But it's common practice of commercial river runners to throw cans into the river, as long as they are open and can sink." But is it ethically "right" for conservationists to think this way? Others may say, "So few get into the area, what does it matter if we bury cans and bottles and leave messy camps?" Seems like somebody must have said the same things about some places in Yellowstone Park---and even the Aspen Grove trail on Timpanogos some years back. As for stealing artifacts, what ever happened to the "Take only pictures, leave only footsteps" philosophy? Gosh, think what fun we could have spraying river canyon walls with a can of pressurized paint----



## WASATCH MOUNTAIN CLUB TRAIL GUIDE AND RATING SYSTEM

The following list contains most of the local hikes that we take. Our rating system is designed to give some idea of the effort involved on each hike. The WMC rating system is based on a third of a point for each round trip mile, a point for each thousand feet of elevation change below 10,000 feet, one-and-a-half points above 10,000 feet, plus appropriate factors for specific difficulties for the hike.

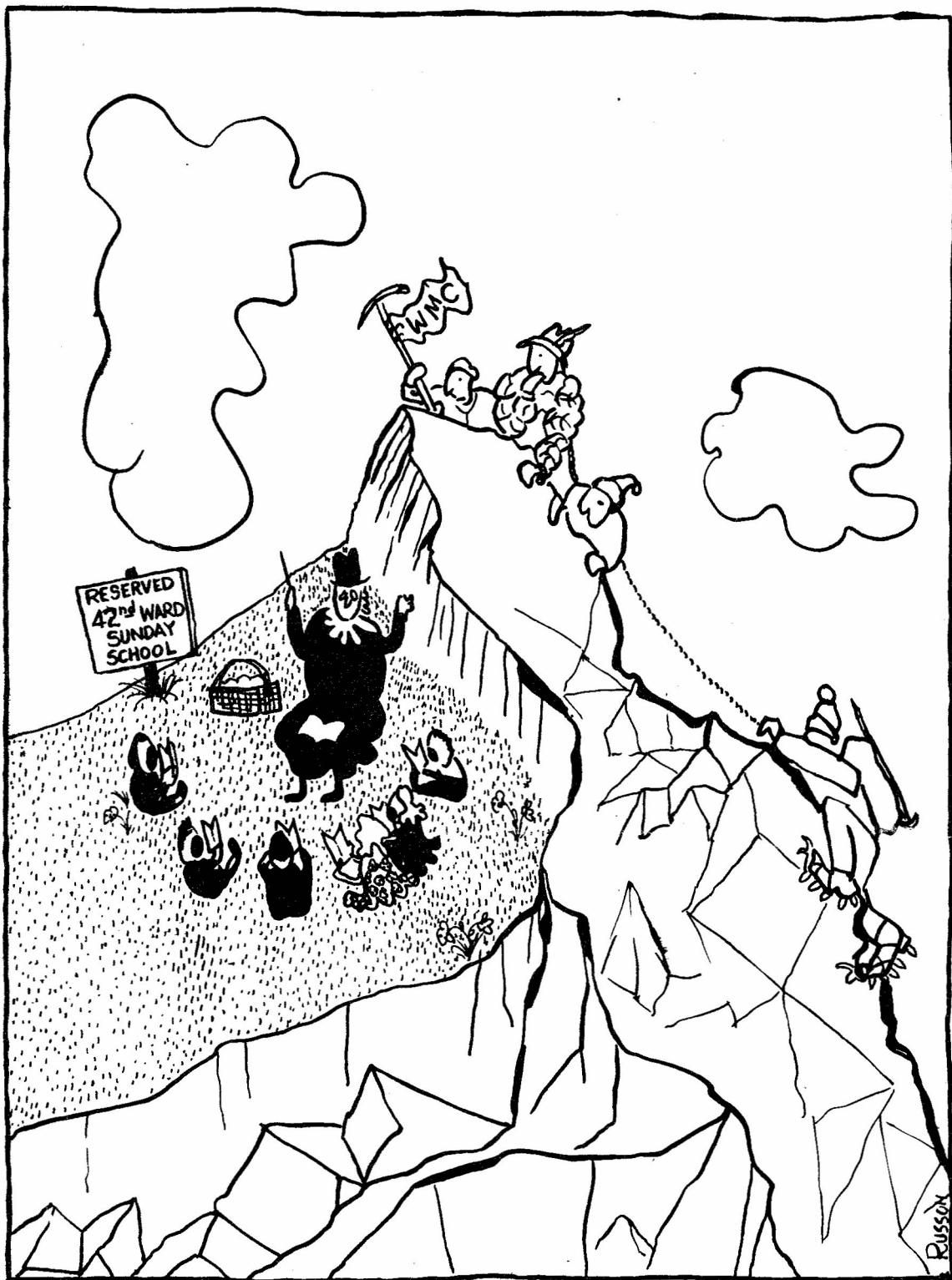
The practice of indicating hiking time has been discontinued, since listing the round trip hiking time, not including rest or lunch stops, seemed to badly confuse the beginning hiker. On level ground, the average hiker in good condition can travel 3 to 4 miles per hour, or a mile in 15 to 20 minutes. However, most of our trails are not on level ground. In many places in the Wasatch, trails ascend at the rate of over 1000 feet per mile. The average hiker requires at least an hour to cover one mile of trail with 1000 feet change in elevation. Of course, energetic hikers in prime condition can hike much faster. Inexperienced hikers and those not in condition will travel slower.

Once a person has made the easier hikes, up to a rating of about 5.0, he can then decide whether to advance to a more strenuous hike, based on his own experience. Very generally for energetic hikers in good condition, hikes rated less than 5.0 are easy, 5.0 to 8.5 are intermediate in difficulty, 9.0 through 11.5 are long, and anything over 12.0 is quite difficult. Again very generally, since so many factors are involved, inexperienced hikers should allow at least the same number of hours for a round trip as the number of points in the rating for the hike.

Quadrangle references refer to maps available from the U. S. Geological Survey, Federal Building, 125 S. State St., at 30¢ each. Many of the higher peaks have registers on their summits, placed by the Wasatch Mountain Club, Ute Alpine Club, and the Sierra Club. Look for them as you attain the "heights of exhilaration"!

<u>Rating</u>	<u>Quadrangle*</u>	<u>Hike</u>	<u>Elevation</u>
0.5	E	Donut Falls	7,900
1.0	A	Lake Solitude from Silver Lake	9,070
1.5	A	Lake Mary from Lodge	9,560
2.5	A	Lake Catherine from Lodge	9,920
2.5	C	Silver Lake (Am. Fk. Canyon)	9,000
3.0	-	Bald Mt. (Mirror Lake)	11,497
3.0	D	Big Beacon	7,143
3.0	A	Catherine Pass from Lodge	10,220
3.0	E	Mt. Aire via Elbow Fork	8,620
3.5	A	Devil's Castle (exposure)	10,920
3.5	A	Point Supreme from Lodge	10,445
3.5	G,A	Mt. Baldy from Albion Basin	11,068
3.5	A	Sugar Loaf from Albion Basin	11,051





IOWA MOUNTAINEERING CLUB SUMMER  
OUTING

by Harold Goodro

Anyone interested in attending the Iowa Club summer outing in the Beartooth Wilderness Area of Montana from August 8th to 20th, call Harold Goodro at 277-1247.

Cost of the two weeks at their camp is \$115. This includes three prepared meals a day (professional cooks), daily guide service for any type of climbing you desire, climbing schools, both rock or snow and ice, evening campfire programs and refreshments, plus outstanding fishing, nature walks or other camp activities.

Harold and Gary Larsen will be two of the climbing guides. There will probably be two cars from here driving up to their pack-in point.

The walk in to their base camp at Star Lake is about five miles on a good trail with little raise in elevation. Each participant is allowed 45 pounds of gear that will be taken in for him.

These trips are real bargains and also make a person eligible to attend one of their climbing expeditions to other countries, such as Africa 1967, Europe 1968, and Peru 1969.

**SALT LAKE'S OLDEST  
HIKING & CAMPING  
SPECIALISTS---**



Invite you to discover new  
world of outdoor

**ENJOYMENT**

with the highest quality

**L - W\***

Down Sweaters & Vests  
Cooking Pots & Stoves  
Wind Breaker Parkas  
Sleeping Bags  
Foam Pads  
Nylon Tents  
Boots

\* LIGHT-WEIGHT LESS-WORRY  
LONG-WEARING LESS-WORK  
MORE - FUN

**Timberline  
Sports** Inc.

**466-2101  
HIGHLAND DR 2959**

It was something to see! Harold Goodro, Tom Deglas, and John MacDuff set up the obstacle course on the mountain in back of the lodge. From the starting point the course dropped through a couple of sharp gates to a tire suspended between two trees. Even slim Sarah Weller looked at that, and took a time penalty to go around it. Following the tire was a jumping rope, then a barricade, two more gates and then the tunnel. June Viavant went through this three-foot-high impediment so slickly that she was out the other side and on her way in seconds. From the tunnel, skiers took a sharp turn, coming face to face with the Matterhorn gate. This gate perched atop the climbing rock in back of the lodge. It was interesting to watch the entries climb the ladder with skis in hand and then attempt to get back into bindings while teetering atop the pinnacle. From there the choice was straight down through the back windows of the lodge or a sharp turn to the left prior to a rapid approach to the finish gate. Bruce Christensen merely jumped down with his short skis. Tom Deglas tried a jumping side-step and landed on his head. About the most dramatic finish was provided by Mel Davis as he crawled through the finish gates on his hands and knees - - wearing skis, yet. In between the ski racers was Rufus Hall who kept practicing the race on his **snowshoes**, getting faster and faster, until he was a split second off first place. Noisiest entrant was John MacDuff who covered up his problems at the gates by yelling a lot. Clare Davis and Jane Daurelle were disqualified halfway down because of problems with their skiing gear.

From the obstacle course, we went over to the couple baton race. This took place down the Mary lift where speed did count. Helen and John Mildon really caught the eye in their twin outfits with the sort of pointy hats. June Viavant and Bruce Christensen were the winners on this course. While all this was going on, Milt and Louise Hollander were tunneling into the front door of the lodge.

After the exertions of the race everyone was ready for the pot-luck dinner. What a dinner! The table was laden with a variety of meat loaves, casserole dishes, jello and tossed salads, hot rolls, and desserts of chocolate cake, brownies, apple pie. M-m-m-m-! At this time trophies for the obstacle course were awarded to Sarah Weller and Bruce Christensen. Bruce was all-time winner for the day.

We didn't get everybody's name, but the ones we remember from the crowd in the circus tent were John MacDuff, Sarah Weller, Clare and Mel Davis, Tom and Louise Deglas, June Viavant, Scotty Imber, Bud Temple, Louise and Milt Hollander, Roger Jackson, Harold Goodro, June Pierce, Bruce Christensen, Frank Steinhart, Mr. and Mrs. Vic Dirnfeld, Jane Daurelle, Rufus Hall, and Mr. and Mrs. Kermit Reister.



Two ski tours were planned for this day, partly to emphasize the Snow Carnival to be held the next day, and partly to end the touring season with a big bang. Unfortunately, winter didn't co-operate. The season dwindled and nearly vanished early in April. Then, after we had all but given up, a fresh snow during the week encouraged us to try this last tour after all. Since only six people showed up, the scheduled tours were forgotten; and we took a "stroll" up to Katherine Lake instead. From the top of the Majestic Lift, we headed southeast through the woods, then traversed the steep slopes under the southeast ridge until we arrived at the lake. The snow was excellent in the morning, the light, fresh snow resting on a firm base. But by midday, it got heavy and made the descent somewhat less than perfect. Still, the weather was as splendid as the scenery, and the short trip turned out to be a good finale to the ski touring season. Those attending were: Carl Bauer, Jan Orosz, June Viavant, Bill Ohlsen, Ross Stenerson, and Charlie Keller.



Obstacle Course Winners, Bruce Christensen and Sarah Weller

Photo by Mel Davis

## CONSERVATION NOTES

by Bill Viavant

The most significant conservation event in several months was the visit to Salt Lake of David Brower and Jeffrey Ingram of the Sierra Club. They spoke at the Conservation Round Table on Monday, May 16, and at a public meeting Monday night at the University. More than a hundred persons were at the meeting, including representatives of the Bureau of Reclamation! KUTV and KSL taped interviews with Brower, and KUER taped the Monday night meeting. This latter tape is available if anyone who may have missed the meeting wants to hear it.

The gist of Brower's report is that despite the withholding of information by several federal agencies, despite vigorous lobbying efforts on the part of dam proponents, (watch that spelling), the expert testimony of conservation spokesmen has probably swung the Congress at least to a position of extreme caution on Marble Canyon Dam.

Using the same economic data that the Bureau uses, and making the same assumptions, the conservation experts demonstrated that it is actually less expensive to do exactly what the Bureau wants done as far as the Central Arizona Project is concerned, and at the same time actually save water, by NOT building the dams in Grand Canyon. All this without even using the powerful argument that Grand Canyon should be left inviolate because it is the Grand Canyon .. More should not be needed ..

Two important conservation matters are pending, in both of which the club can take an active part. On June 7 a public hearing of the Public Land Law Review Commission will be held in Salt Lake. This Commission is charged with the responsibility of reviewing and recommending changes in all federal laws pertaining to the public lands -- a process of vital interest to Westerners (Utah has over 70% of its area in federal ownership), and of even more vital interest to the people of the U.S. who are the owners of this land.

The hearing in June is primarily a forum at which individuals concerned about and affected by the land laws can make known their views and recommendations. Naturally, this means to most people the ranchers, miners, and others who have a direct economic interest. However, it should also mean the lovers of wilderness, the hikers, climbers, explorers, and those concerned about ecological balance, about wildlife, all of us who are worried about the fate of the three or four per cent of our heritage of land that hasn't fallen under the heel of economic "progress". I am very much afraid that the 200 million who own the land will have a feeble voice, but the few thousand who make money from it will be heard loud and clear.

By the time you read this, it will be too late to get permission to testify formally, but several WMC members will testify, and we can use the moral support of your presence as spectators at the meeting. Also, we would like a report on what other people say--who are the 1966 "give-away McKays", and what are the real inequities in the present laws?? The meeting will be on Tuesday, June 7, at 10:00 a.m. in the Governor's Conference Room at the State Capitol Building.

The second big conservation matter of interest to the club is the creation of the Uinta Wilderness Area. The Wasatch National Forest staff has sent to Washington details of its proposed boundary for the wilderness area. They desperately need help in defending these proposals when hearings are held in the fall, and this help can best come from persons who are familiar with the areas involved. The club will have information on the proposed boundaries, and we should attempt to make several field audits by actually walking over the area, taking notes of what has been included as well as of what has been excluded by the boundaries, and verifying that the boundaries make sense as far as controlling the use of the land. We can anticipate great pressure from, once again, the Bureau of Reclamation, in connection with the Central Utah Project, to push the boundaries all the way to the tree line and beyond... This is one task that we just couldn't hold our heads up if we shirked.. after all, this is our business -- we are a Mountain Club.. Besides club trips, I hope any individual members planning Uinta trips will consider this "field audit".

---

#### FOR SALE

Delbert and Janet Yergensen have the following articles for sale. They say that it is all in good condition, and feel that someone should be making use of them.

One Reevair Rain Jacket - size extra large, yellow	\$4.50
One Reevair Rain Jacket - size medium, yellow	\$4.50
One Bergan-type Rucksack	\$4.50
One Bergan-type Rucksack	\$6.00

Phone Delbert and Janet Yergensen, 485-9887, 3151 South, 2600 East.

A line in Jane Daurelle's most recent article keeps running through my head. It went something like, "If I had a nickel for every time Tom Stevenson came back and put someone's climbers back on again, I'd have been rich at the end of fifteen minutes." And over and over, there keeps running through my mind, "Why does Tom do it?"

(My apologies to Jane and Tom for making examples of them.) I, too, am a beginner at ski touring, and I, too, have been herded along by trip leaders who could have skied three times as fast (and as far), but who were willing to slow down and nurse the boob beginners (me) along. Why do they do it?

Frankly, I can't think of a logical answer to that question, and maybe we'll have to ask Tom and Charlie and Carl and John and Dave and Gale and Boone and all the myriad others, "Why?" But I do know that we wouldn't have a Wasatch Mountain Club without them.

The back of the old membership card stated something about the club being a cooperative organization, and depending on everybody's help to keep it going. I wish it still had that statement on it.

The hard truth is that the club cannot continue to function unless everyone will volunteer to take on one or several jobs -- organizing a lodge cleanup party or a section thereof, leading a hike or a river trip, cleaning the bus (or the toilets), collating and stapling the "Rambler", phoning for a club party, hosting a week-end at the lodge-- the list is endless once you start thinking about it. (I'll bet a plug nickel that you don't pick up the phone and volunteer to do it! The Board members' phone numbers are listed in each "Rambler" -- call any one of them!)

## BISHOP'S ULTIMATE



No other tent is so waterproof, breathable, roomy, easy to erect, and light weight. The Bishop Ultimate Tent uses a newly designed Blanchard Draw-Tite frame, and is an improved version of the tents used on the American Everest Expedition. Waterproof fly, breathable tent; huge, protected window. 2, 4, 6-man models. Fitted or flat fly. Frost Liner. Write for 16-page brochure.

## BISHOP'S Ultimate Outdoor Equipment

6804 Millwood Road • Bethesda, Maryland 20034  
Telephone: 301-652-0156

The Board of Directors has unanimously approved the appointment of Pete Hovingh as Hiking Director. Hiking is one of the club's most important and popular programs during the spring, summer, and fall months. Pete's participation in hiking during the past several years makes him particularly well-suited for his new position, but to properly meet his new responsibilities, he must have the support of the membership. If Pete calls on you to lead a trip, please don't refuse him without good reason. If you must decline the honor, offer to lead another one at a later date. With your support, and Pete's direction, the club can look forward to a splendid hiking season.

In another action, the Board approved the appointment of Dave Allen to replace Ron Perla as Mountaineering Director. Ron has accepted a position as a guide in the Tetons during the summer months. Recognizing the fact that he could not be climbing in the Wasatch and the Tetons at the same time, he offered his resignation; it was accepted with mixed feelings of envy and regret. Dave brings to the Board a wealth of climbing experience; he has been a member of the Mountaineering Committee and an active mountaineer for many years. Under his direction, the 1966 climbing program formulated by Ron should be carried forward with great success.

Welcome to the Board, PETE HOVINGH and DAVE ALLEN!

A general membership meeting has been scheduled for Wednesday, July 13. One of the items of business is to elect a new Trustee. Further notice will be given in the next "Rambler". Mark this date on your calendar.

Club Headquarters: 425 S. 8th W., Salt Lake City, Utah 84121  
Telephone: 363-7150                      Lodge at Brighton, Utah

#### DIRECTORS

CHARLIE KELLER, President .....	487-7137
TOM STEVENSON, Vice President .....	364-5268
BARBARA EVANS, Secretary .....	278-1495
MAX TYLER, Treasurer .....	277-3865
DAVE COOK, Boating .....	355-4086
BILL VIAVANT, Conservation and Trails .....	364-9684
SARAH WELLER, Entertainment and Recreation .....	466-7325
PETE HOVINGH .....	
ROGER JACKSON, Lodge .....	322-0751
DALE GREEN, Membership .....	277-6417
DAVE ALLEN .....	278-0230
JACK McLELLAN, Publications .....	277-7214
ROBB RUSSON, Publicity .....	485-8972
GEORGE SMITH, Transportation .....	484-9873



WASATCH MOUNTAIN CLUB  
425 South 8th West  
Salt Lake City, Utah 84104

RETURN REQUESTED



WASATCH MOUNTAIN CLUB, INC.

Application for Membership

To Board of Directors:

I hereby apply for membership in the Wasatch Mountain Club. I enclose \$2.00 entrance fee and \$6.00 annual dues. The scheduled event I have attended is \_\_\_\_\_ on \_\_\_\_\_ (approx. date). I agree to abide by all rules and regulations of the club.

Name: _____	Recommended by: _____
Address: _____	Member: _____
City: _____	Director: _____
State: _____	
Zip Code: _____	Phone: _____