

The Rambler

Official Publication of
THE WASATCH MOUNTAIN CLUB

Salt Lake City, Utah

April 1968

CLUB ACTIVITIES FOR APRIL, 1968

Apr. 6
Sat.

DESERET PEAK -- A ski tour for intermediate and advanced participants. Deseret Peak is about 15 miles south of Grantsville and should prove a less demanding tour than the previously scheduled "Lone Peak to Bells Canyon Tour". Bring several lunches, water, and skins. Departure from Salt Lake City should be by 6:00 A.M. Register by 5:30 P.M. Friday, April 5. Contact leader: Lindsay (Pat) Caywood (364-1717) for details.

Apr. 7
Sun.

GOURMET'S TOUR -- Open to all, from beginners on up, who may wish to participate in out-doing his fellows in gustatorial endeavors rather than in burning up energy to reach the ridge first. Register by 5:30 P.M. Saturday, April 6. The "tour" is planned for Albion Basin. Meeting place: Snow Pine Lodge at 10:00 A.M. Your leader will bring his guitar and would like to have other "tour" participants bring their musical instruments. It is to be hoped the walls of Devil's Castle will be able to withstand the onslaught. Leader: Maestro Bob Woody (466-5039)

April 13
Sat.

ALTA TO LAKE BLANCHE -- An advanced ski tour. Bad weather has caused this tour to be cancelled twice, but good touring conditions can make this tour one of the most enjoyable that the club schedules. Two ridges must be gained but the scenery is rewarding and the upper ski slopes can hold some excellent snow even this late in the season. Bring skins, water, and several lunches. Cars must be shuttled for this tour. As some of you already know, this can be time consuming, so please register by 5:30 P.M. Friday, April 12. Meet at the mouth of Big Cottonwood Canyon at 6:30 A.M. and enjoy the morning light. Leader: Alexis Kelner (359-5387).

April 13
Sat. Nite

WATSON SHELTER MUSICAL OVERNITE -- Ski all day at Alta, then bring your sleeping bags, and musical instruments up to Watson Shelter for an evening of fun. \$5.00 a person will include dinner, breakfast, and all the beer you can drink. (Sorry, but due to liability insurance there can be no skiing when the lifts are closed--But--you can be first in line in the morning.) Register for sure by Wed., April 10 at 6:00 P.M. at Club Headquarters. (minimum of 10 people a must.)

Apr. 14
Sun.

GAD VALLEY -- An intermediate ski tour. This may be one of the last opportunities to ski Gad Valley before the area is crowded with the public. Bring lunch and water. Skins could be helpful but are not necessary. Register by 5:30 P.M. Saturday, April 13. Meet at the mouth of Little Cottonwood Canyon at 8:30 A.M. Leader: NEEDED

Apr. 16
Tues.

RIVER RATS' REVIEW -- Gala opening for the river-running season. New and prospective river rats welcome; those with wet fur also welcome. Come to the Viavants', 676 South 12 East, at 7:30 P.M.

for movies of past trips, survey of the kinds of equipment you'll need, and review of this year's schedule. Register at headquarters, or 364-9684, so we'll know how much beer to get. Pay for your own beer, snacks provided. Come and have your questions answered.

Apr. 25
Thurs.

HIKER'S CLIMBING COURSE -- This first session will meet at upper Pete's Rock at 6:30 P.M. Pay the \$1 registration fee when you get there. This course is designed primarily to give hikers an introduction to off-trail hiking, rock scrambling, and rope climbing. However, the first session will be devoted to hiking fundamentals to prepare beginning hikers for their first experience and may help seasoned hikers to improve their technique.

The second and third sessions will deal strictly with climbing, i.e., basic movements on rock, rope handling, knots, rope climbing, belaying, and rappelling. Every hiker can benefit from having a knowledge of climbing rudiments, and perhaps some will be stimulated to learn more about this enjoyable sport. Questions??? Call Max Townsend, 363-2269.

Apr. 21
Sun.

BIG BEACON -- Elev. 7,134, rating 3.0. This is the first scheduled hike of the year and would be a good warmup for those who hibernate during the winter. Meet at "This Is The Place Monument" at 9:00 A.M. The hike is an easy round trip of about two hours. Registration not required. Leader: Mel Davis (278-3174)

Apr. 28
Sun.

LITTLE BLACK MOUNTAIN -- Elev. 8,062, rating 6.5 An intermediate hike of medium length for good conditioning. We may encounter several snow fields, so wear adequate foot gear. Register by 6:00 P.M. Saturday, April 27. Meet at Shriner's Hospital at 9:00 A.M. Leader: John MacDuff (484-1634)

Apr. 27-28
Sat. & Sun.

SAN JUAN FLOAT TRIP -- This beginner's trip will take us from Aneth to Mexican Hat. We will enjoy beautiful scenery and should see cliff dwellings and petroglyphs. Work party will meet at the Ice Plant (430 W 2nd N) at 2:00 P.M., Sunday, April 21. Everyone planning to go is expected to attend the work party. Register by paying the fee, \$19??? at Club Headquarters by 5:00 P.M., April 23. Departure time is Friday, April 26, at 7:00 P.M. sharp from the Ice Plant. For further information contact trip leader, Bud Reid (298-7188).

May 2
Thurs.

HIKER'S CLIMBING COURSE -- Second session, 6:00 P.M., upper Pete's Rock. See blurb about first session, April 25, for more details.

May 4
Sat.

MT. AIRE -- Elev. 8,621, rating 3.0. A short, easy hike starting in Mill Creek Canyon. Registration is not required. Meet at the Red Carpet Inn, about 3900 Wasatch Blvd., at 8:00 A.M. Leader: Bill Ohlsen (364-2159)

COVER SHOT - Coming down the "Salmon Falls" along the Main Fork of the Salmon River, Idaho, the hard way--backwards. This and other shots in this issue of the Main and Middle Forks taken by Carol Wiens.

- May 5
Sun. MT. OLYMPUS -- Elev. 9,026, rating 8.0. This is an ever-popular intermediate hike usually scheduled several times during the hiking season. Though some water might be available, you might as well carry some along with a lunch. Meet at the Red Carpet Inn at Wasatch Blvd. and 3900 South at 7:30 A.M. Register by 6:00 P.M., May 4. Leader: Gerhard Hentschel (355-1667)
- May 4 & 5
Sat. & Sun. DRUID ARCH - CANYONLANDS PACK TRIP -- Of the many spectacular features, Druid Arch is one of the most renowned. The hike into the Arch is about seven miles each way and somewhat strenuous. Beginning back-packers and older children are welcome. Transportation will be in individual cars, leaving Salt Lake Friday evening. Register by 5:30 P.M. Wednesday, May 1. For additional information call the Leader: Pat King (486-9705)
- May 9
Thurs. HIKER'S CLIMBING COURSE -- Third session; 6:00 P.M.; Upper Pete's Rock.
- May 11-12
Sat. & Sun. DOLORES RIVER FLOAT TRIP -- On this beginner's trip we will float from Slick Rock to Bedrock, through spectacular Slick Rock Canyon, 49 miles in all. Because of the late runoff, we were not able to run this river last year, so don't miss it this time! Everyone planning to go should attend the Work Party on Sunday, May 5, at 2:00 P.M. at the Ice Plant (430 W 2nd N). Kayaks and canoes are welcome on this trip; however, it is recommended that canoes be decked. Register by paying the \$16 fee by 5:00 P.M., May 7, at Club Headquarters. Departure time is 7:00 P.M. sharp, Friday, May 10, from the Ice Plant. Call trip leader, Fred Bruenger (485-2639), for additional information.
- May 30-June 2
Thurs.-Sun. DESOLATION CANYON -- An intermediate trip on the Green River, from Ouray to the town of Green River.
- June 15-16
Sat. & Sun. SNAKE RIVER FAMILY TRIP -- Jackson Lake to Moose or Alpine, a beginner's trip.
- June 29-July 7
Sat.-Sun. SELWAY RIVER -- A small, swift river in the Selway Bitterroot Wilderness area. Intermediate-advanced trip.
- Aug. 17-18
Sat. & Sun. GREEN RIVER FAMILY TRIP -- Flaming Gorge to Gates of Lodore, beginner's trip.
- Aug. 31-Sept. 2
Sat.-Mon. SNAKE RIVER -- Jackson Lake to Alpine, beginner's trip.
- Sept. 12-15
Thurs.-Sun. CATARACT CANYON -- Moab to Lake Powell, advanced trip.

IMPRESS your friends! Snap lots of photos (black and white, preferably) and have them published in the RAMBLER. Have a spectacular shot of Shiprock? Send it in. You'll get a credit line, of course.

ANNUAL ELECTION OF THE NEW BOARD

The annual election meeting was held Feb. 25 at the Utah Power and Light Bldg. (as usual), around 8:15. With only three positions being contended, the balloting took very little time. Barbara Evans, out-going secretary, provided a thought-provoking film on conservation, "The Last Frontier."

Your new board members are:

President, Dale Green; Vice-President, George H Smith; Secretary, Barbara Brown; Treasurer, Max Tyler; Mountaineering, Dave Allen; Boating, Del Wiens; Membership, June Viavant; Ski Mountaineering, Dennis Caldwell; Hiking, Milt Hollander; Lodge, Pete Hovingh; Publications, Pat Dow; Transportation, Ed Cook; Conservation, Cal Giddings; Entertainment and Recreation, Ann McDonald; Publicity, Alexis Kelner; Trustee, Harold Goodro.

FROM THE EDITOR.....

Since I've only just barely stuck my fingers into the editorial pie, I don't know whether a plum or a lemon will be pulled out. At this stage it's hard to see what the polished article will look like.

Constructive suggestions are welcome especially in accompaniment with any gripes you might have.

When you submit articles, try to keep in mind the fact that we're not mind readers. Please identify yourself as the writer of the illustrious article you've just turned in. Also include the date of the trip, names of participants (they needn't all be listed at the end of the report - you might try to weave them into the report itself) and trip leader; feel free to unvent your creative leanings in writing your article.

Jane Daurelle deserves a heap of credit for taking on the load of typing "Rambler" material for this and future issues. Alas, even Jane will be taking off for a month's vacation this summer, so the "Rambler" will need a typist for that June or July issue. Volunteers?? Although silver isn't likely to cross your palm for the effort, eternal gratitude is. For more information, call Pat Dow, 322-3807.

NO DUES - NO MAY RAMBLER

CLUB NEWS

by Dale Green

Broken leg department--George Smith, our VP, broke one while skiing at Jackson Hole on the Club Trip over Washington's Birthday. Karla Kelner, wife of our Publicity Director, broke hers in an auto accident last month.

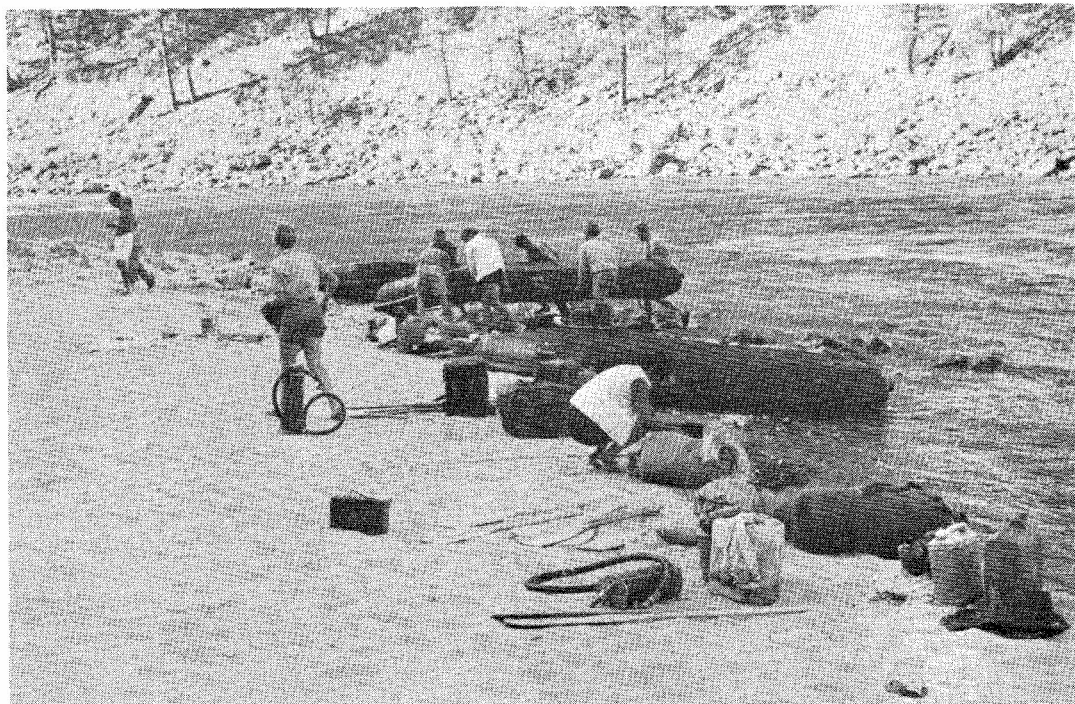
Sick--Joy Greetham is recuperating after surgery.

New Babies--Congratulations to Tom and Mimi Stevenson (a girl--Rebecca) and to Dave and Judy Allen (a boy--not yet named.)

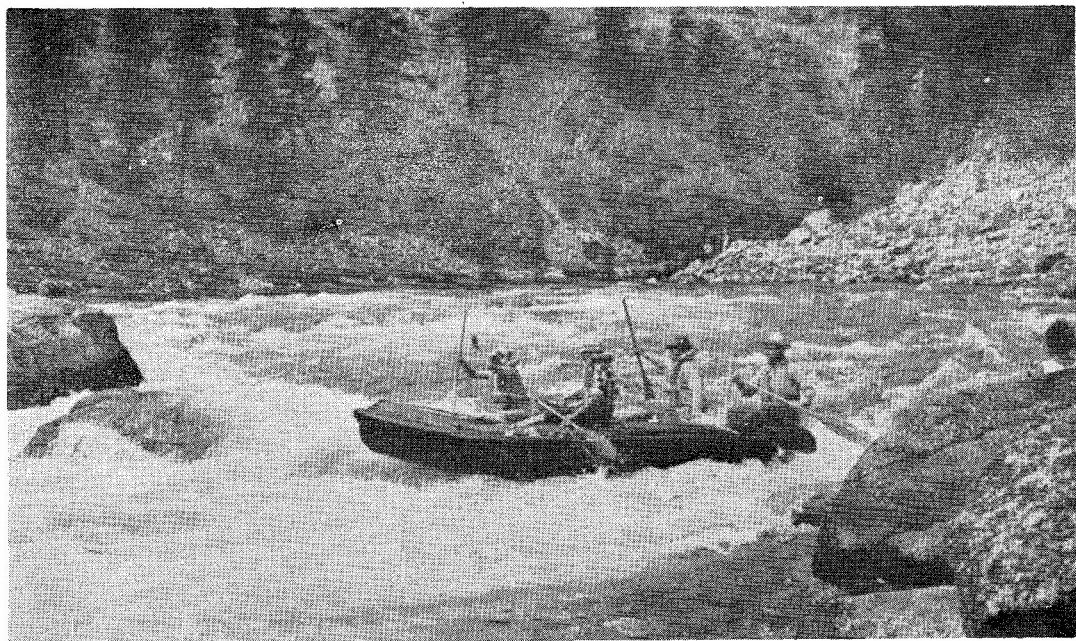
Mary Fisher sent a note along with her dues. She is now in Alaska. She drove up there in the dead of winter over the Alcan Highway in a Corvair.

Nioma Hitz also wrote. She's dying to get back to the Mountain Club but won't graduate until next December, and her plans are very uncertain after that.

There are also a few pregnancies that will cut into several individuals' river tripping.



Beaching the rafts along the Salmon (Main Fork).



"Paddle on the right--NOW!"

THE RIVER RAT'S REVIEW by Del Weins

It's river-running time----almost! And I must confess to some anticipation. Although skiing has its rewards, few activities so completely free my mind from the incredible frustrations and pace of contemporary society. For you veterans, start conjuring up memories of those evening camps on pristine sandbars, after carefree days of water, sun, and scenery. For you beginners with the inclination, drift along while we explore the year's activities.

The summer's schedule includes eight trips (see this issue of the Rambler), and there should be something for everyone. We will make every effort to maintain this schedule, but vicissitudes of weather and water flow sometimes force a change in plans, particularly in the early trips.

This year I would also like to extend a special invitation to any potential

canoers and kayakers to come along on the trips, but you must have prior permission of the trip leader. In the National Parks, you now need raft support before you can get a permit. Carol and I hope to try a canoe on the Dolores this year. It is supposed to be a nice canoe river, if the water is right. Otherwise? Well, we will find out!

For new WMC members who have an interest in the rivers, I urge you to attend the River Ratting Preview, which will be held on April 16 at the Viavants' (see list of activities).

The Club rates river trips similar to ski tours, namely beginning, intermediate, and advanced. This system is not designed to exclude people with no experience from any of the trips but rather to help neophytes decide what might be the best initial trips to take. The system is meant to insure that beginners do not constitute the



Jerry Powelson, a stalwart river runner, and his harem.

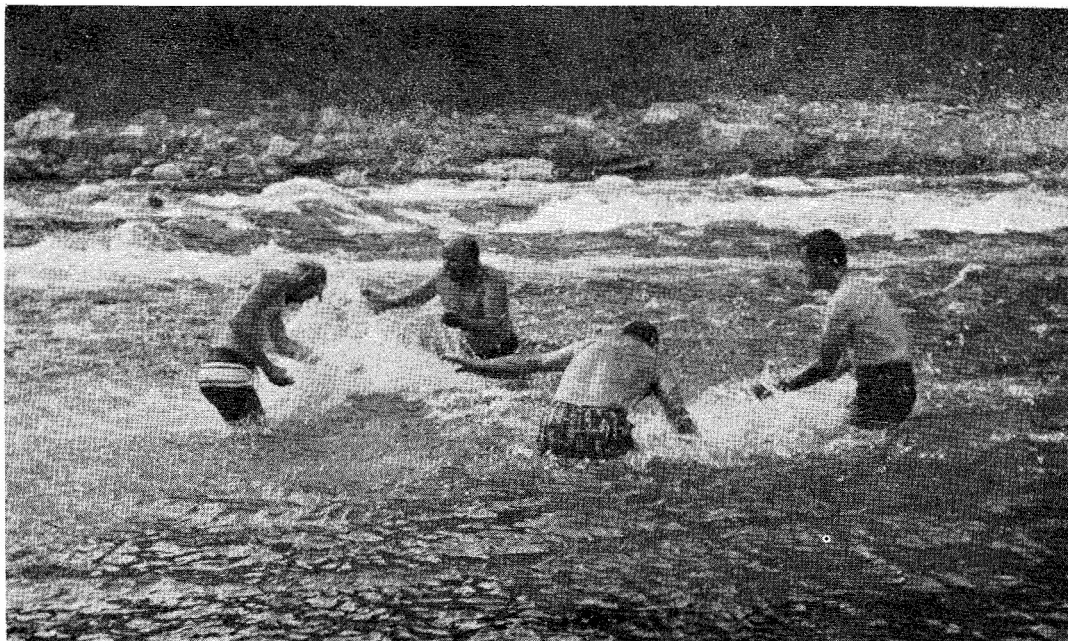
bulk of the personnel on difficult runs. The trip leader will have the ultimate decision about the composition of a group. A good idea would be for inexperienced people to take a beginning or easy run before getting into the more difficult ones. If you want to go on a particular trip but feel uncertain about your qualifications, contact the trip leader.

Rivers are rated according to the number and difficulty of the rapids. Rapids are rated on a scale of 1 to 10 and a general interpretation of these values is given below:

- 1-2 Easy, no difficulties.
- 3-4 Alert, minor difficulties.
- 5-6 Beware! Medium to serious difficulties.
- 7-8 Land and inspect. Major difficulties.
- 9-10 Great to extreme hazards!
Limits of navigability.

Some people suggest that the height of the waves in the rapid is roughly correlated to the rating. Rapids also differ significantly with the amount of water. The ratings, therefore, are only rough indices of conditions that can be expected.

Personal equipment, besides regular camping gear which river runners need, consists of a life preserver and waterproof packing material. A Coast Guard-Approved Life Preserver is a must; avoid any other flotation device; they are not satisfactory. Brightly colored preservers are desirable. The methods for keeping clothes, sleeping bags, etc., dry are as innumerable as they are faulty. Many people use surplus "waterproof" packs, often available at Western Trading Co. (140 S. State). They used to give club members 10% off. Rubberized "waterproof" bags are also used (but watch the seams); however, they are delicate and should be protected by being placed in an outer



"Ring around the rosy"--Fellas, you've got to be kidding!

heavy canvas bag of some sort. Surplus ammunition cases (50 caliber) are very handy for carrying cameras and miscellaneous items used often during the day. If in doubt about necessary equipment, check with experienced people or the trip leader.

A final item directed toward new members: The fees are incredibly low. By way of comparison, the Western River Expeditions of SLC charges \$180 for the Desolation Canyon run (excluding transportation to and from, but including food). The WMC makes exactly the same trip (including all transportation, but not your food) for about \$25. In terms of a vacation, it is difficult to improve on the low cost, the usually outstanding scenery, and isolation found on most of our western rivers. Add to this some whitewater thrills and you have, I believe, a perfect outing.

And remember----DOWN WITH DAMS!



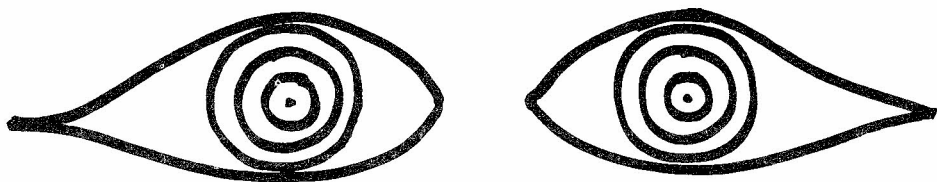
The inevitable end of a river trip - packing up.



It helps to have a few side skills on a river trip.

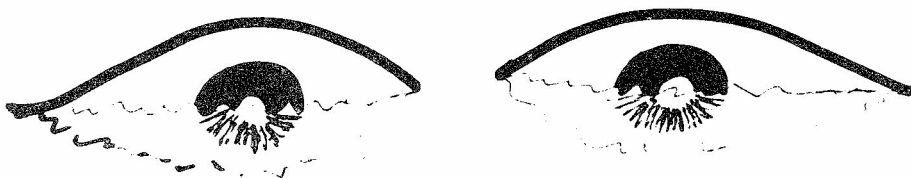


River Rats - a formal portrait.



What do you mean, "That was a
nice little rapid for a start?"

Phyllis



And how long can you
tread water, Miss Ruhmann?

Phyllis

JACKSON SKI TRIP

by Julie Heiser

Several of us took the annual trek to Jackson Hole over Washington's Birthday. The drive up was something I'd just as soon not tell about since the weather conditions were a mixture of light to heavy rain and snow with wet roads most of the way. Such pleasantries were topped off with a two-hour job of pushing Phyllis Snyder's miracle Mustang up the Salt River Pass in a blinding snowstorm. Nevertheless, all was not lost at this point, as we dropped off to sleep three hours behind schedule to dream of the much-fabled slopes awaiting the cut of our lightning-fast skis.

Thursday began with some promise. The air was warm and the heavy cloud cover didn't bother us.----Then---it started---We discovered during a breakfast with some Jackson natives that Snow King had been closed for the previous three days due to a mid-winter thaw. These same people assured us, though, that Teton Village was higher and not subject to as great a temperature rise. Nonetheless, Thursday was spring skiing on the packed runs and, according to Charlie McDonald, who was the only one to attempt to ski them, the uncut slopes resembled large fields of glue. Therefore, it didn't take long for the crew to join Ann McDonald, who had spent the day holding up the WMC image in the local lounge.

Friday it rained---need I say more? We called the second shift, whom we expected to arrive sometime Friday night and advised them to bask in the glories of Alta. But they refused to heed our warning and came ahead. With them they brought a marvelous day, as Saturday made liars of us all. Beautiful cloudless skies, bright sun, and OK snow. We attacked the endless array of runs at Teton Village with our characteristic reckless abandon. There was something for everyone, both

in degree of slope and snow condition. Those who cut up the backside described it with such picturesque words as cracking crust, and liquid lead. On the other hand, not everyone found such snow obscenities, and many of us thought Saturday a perfect day - that was until George Smith broke his leg on the last run.

The ride home was beautiful, and the further we got from Jackson the better it seemed. Some of us prolonged the journey with a farewell meal at the Jolly Roger in Evanston, while the others made their last stop at the cheese factory in Star Valley. ---To each his own---

CANYONLANDS NATIONAL PARK ROAD SURVEY TRIP

by June Viavant

We have heard from Bates Wilson, Superintendent of Canyonlands National Park, that the proposed trip to view the location of paved roads in the Park had to be postponed for a month or more BECAUSE an out-of-state survey team would be there the week of March 11 to decide whether to have roads, and possibly to redo the Master Plan for the Park.

This is therefore a MOST APPROPRIATE time to write letters apprising the planners of our feelings and ideas about the location of roads and the need for more trails but NOT roads. If you feel strongly that Chesler Park should be left in its natural condition and should be accessible only to those who make the effort to hike in (and consequently feel that the jeep road should be blocked), write:

Regional Director
National Park Service
Southwest Regional Office
Santa Fe, New Mexico 84501

WHITE PINE CANYON SKI TOUR
by Bruce Christenson

On January 26, the scheduled date for the White Pine Canyon ski tour, the weather reports called for snow and wind. According to the snow ranger report: 18 inches of new snow, avalanche danger, no touring. This echoed similar conditions that have plagued this tour for the last three years. However, two of the members who registered for the tour were eager to try it the next week end. With improving weather conditions more people became interested and, with the approval of the snow rangers, eight enthusiastic skiers led by Bruce Christenson, started off on a warm, clear, February 4th.

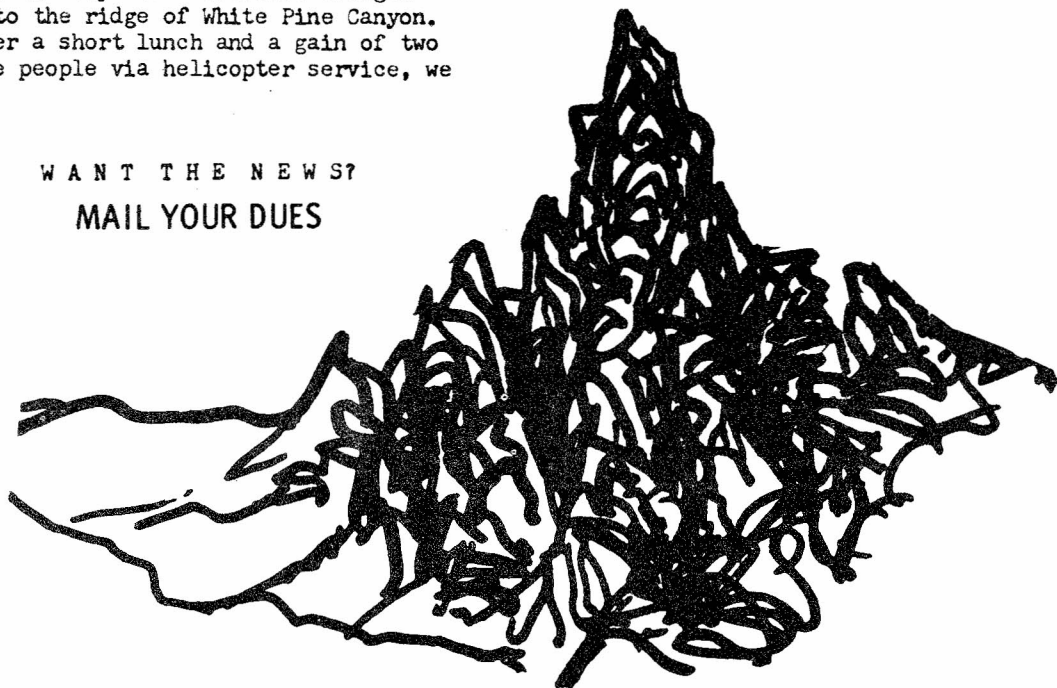
From the Sugar Loaf lift we skirted underneath Mt. Baldy, crossed the ridge into Mary Ellen Gulch, and then proceeded to the top of American Fork Twins. A few turns down the easy slope from the top and a traverse brought us to the ridge of White Pine Canyon. After a short lunch and a gain of two more people via helicopter service, we

thoroughly cut up the delightful powder on the upper slopes of the canyon. As the canyon became choked with trees and brush, we took several different routes, each group expecting its route to be the best. Some kept to the right on the road and experienced sun-softened snow, which caused their ski bottoms to ice up. Others wandered around skiing from one tree into another. Still others harkened to the shaded canyon bottom, where powder skiing was great when you weren't in the creek or hung up in the brush.

Those who enjoyed the hard-to-beat combination of beautiful shirt-sleeve weather and excellent powder were Club members Dave Morris, Harold (Hafty) Haftig, Charles & Emilee Hall, Milt Hollander, Pete Hovingh, and Bruce Christenson, with visitors Blain Ericson, Bob Wilding, and Lennie Neilsen.

WANT THE NEWS?

MAIL YOUR DUES



YELLOWSTONE SKIMOBILE TRIP

by Helen Bander

About thirty members and non-members of the Club arrived in West Yellowstone at various hours of the afternoon of, and night following March 1. Three or four hardy souls arose and rode the snowmobile at 7:30. The rest of the crowd slept in, had leisurely breakfasts, and walked about town in the bright, warm, sunlight. The roads were not only bare of snow, but were rivers of water. The snowmobile could not come to its usual pick-up spot at Stagecoach Inn.

Somewhat after 12:30 the WMC-ers embarked in the last of the snowmobiles making the 12:30 run. The road was rough from much traffic and melting snow. Many people that day made the 75 mile round trip to Old Faithful in ski-dooes and were very comfortable. The elk were enjoying the sun in great numbers, as were the Canadian geese. A coyote was seen in the distance stalking the geese, but soon his head disappeared in the snow and we could

see only a madly waving tail. The driver said he'd probably caught a marmot.

As we approached Old Faithful, we could see an eruption in the distance. We sat about in shirtsleeves, eating lunch. There was no wind, and there must be some splendid pictures of that 100-foot column of steam against the blue sky.

Sunday was another warm, sunny day. Some rented ski-dooes for spectacular trips through the woods, some going as far as Lake Heggen. Others slept in, had leisurely breakfasts, and walked about town. Some had left the day before to Jackson to ski.

Those who went were: Roy Keir; Dave Luther; the Logans; the Kendalls, the Leinings; Lloyd McMahan, the Banders; the Dagleishes; the Goldschmieds; David George; Vivian Higginbotham; the Hulls; the Ulys; the Knudsens; Marilyn Riedel; Jean Pilgrim; Lois Mansfield; Becky Price.

WOLVERINE CIRQUE SKI TOUR

by ??????? ?????????

Newcomers and oldtimers assembled at the bottom of Millicent lift (on time, yet) in rather threatening weather. The temperature was low and the wind bit into us. We got rather spread out on the contour section but came together for snacks and drinks (hot rum toddies would have been most appropriate, but alas--at the cirque. I have never seen Wolverine Cirque more windblown---there was more rock than snow, and some of the beginners left their skins on, the better to maneuver between the rocks.

After discussing possible routes on the steep slopes above us, Mell Davis and John MacDuff led three others in

an attempt to reach the ridge above, scouting a new route to Twin Peaks Pass. The rest of us returned the more prosaic way. The snow was superb and by this time the sun had broken through. We kept track of the "climbers" on the hill above us as we crossed the lake, but I don't know for sure if they ever came down off the ridge.

We had one skier with us who had only been on skis three times in his life---that's what's known as a beginner's tour!

Trip leader: Bill Viavant; other tourers: John MacDuff, Clare and Mel Davis, Julie Weiser, George Swanson, Ken Higginbotham, Russel Patterson, Lyman Lewis, June Viavant, and two others, whose names are lost to history.

RAMBLINGS

by Dale Green, President

"2 KILLED IN SALT LAKE SHOOTING"

"Two people were killed in a fashionable Salt Lake suburb....." I was reading the paper in my motel room in Phoenix, Arizona, when I glanced at the small headline. I had nearly turned the page before a familiar name caught my eye. It was then very difficult to read to the end to find out who the victims were. To briefly recap the story, Gale Anderson forced his way into Ann McDonald's house late Tuesday night, March 12th. He held Ann, her two daughters, and her mother at gunpoint for 8 hours. During this time, he kept taking pills and made many threats. He pistol whipped Ann's mother, and after a brief scuffle with Ann he went to Leon Edward's house about a block away. When Leon's brother Wayne answered the door, he was shot dead. Leon and Gale had a gun battle during which Leon was critically wounded in the stomach. Gale was hit and later committed suicide.

Gale Anderson was never a member of the Mountain Club. He attended many of our summer climbing sessions at Storm Mountain in 1962, but after several stories that reached my ears (I was President at the time) I strongly recommended to everyone that his membership not be solicited. Later that year, he and Leon Edward found the three mangled bodies of the Ute Alpine climbers who had fallen at Storm Mountain. Some of his closer friends say this incident was instrumental in causing him to kidnap two girls at Christmas. He pleaded innocent by reason of insanity and was committed to the State Hospital. He was released in 1966 as fully cured, and to help him out Leon let him help in the bookstore he was operating (in previous partnership with Ann McDonald) but this didn't work out. Leon had to file charges for assault and battery,

and at the time of the shooting, there was a standing warrant for Gale's arrest.

Wayne Edwards was a former Honorary Member of our Club. He was awarded this for his work installing the new cement porch at the Lodge at his own expense and time even though he wasn't a member. (Leon was Lodge Director). At this writing, Leon is in the Cottonwood Hospital on the critical-extensive care list. (I just got word that he has been taken off the critical list---jane daurelle---3-21-68) Ann's mother is doing fine, and will be home soon.

CONSERVATION CONVERSATION

by Jack McLellan

(Excerpts from Sierra Club Bulletin)

REDWOODS - Georgia-Pacific charges "malicious distortion" and "outright lies," threatens to sue the Sierra Club; rejecting charges, the club demands a retraction and a public apology by G-P. Last month, the Sierra Club published a full-page ad in the New York Times and the national edition of the Wall Street Journal, calling attention to Georgia-Pacific Corp.'s cutting of redwoods in areas that could be included in the Redwood National Park. "Legislation by Chain-saw?" the headline asked.

R B Pamplin, president and chairman of the board of G-P, teletyped President Wayburn that if "malicious distortion of facts" by the Sierra Club continues, "Georgia-Pacific Corporation, in its own defense, will be compelled to sue the Sierra Club." Pamplin also suggested that Congress investigate the "vendetta tactics being employed by the club." President Wayburn replied that "In the opinion of our attorneys, your statement is libelous per se...We hereby demand a public retraction of your libelous statements and a public apology for them." That is where matters stood as the Bulletin went to press....

TIMBERLINE SPORTS^{INC}

KELTY

SIERRA DESIGNS

MILLET

RICH-MOOR

2959 highland dr
m-f 12-6, sat 10-6
466-2101

Club Headquarters: 425 So. 8th W., Salt Lake City, Utah 84104
Telephone 363-7150 Lodge at Brighton, Utah

DIRECTORS

DALE GREEN, President	277-6417
GEORGE H SMITH, Vice President	484-9873
BARBARA BROWN, Secretary	485-2041
MAX TYLER, Treasurer	277-3865
DEL WIENS, Boating	487-2584
CAL GIDDINGS, Conservation and Trails	359-2588
ANN McDONALD, Entertainment and Recreation	277-0816
MILT HOLLANDER, Hiking	466-7567
PETE HOVINGH, Lodge	
JUNE VIAVANT, Membership	364-9684
DAVE ALLEN, Mountaineering	278-0230
PAT DOW, Publications	322-3807
ALEXIS KELNER, Publicity	359-5387
DENNIS CALDWELL, Ski Mountaineering	278-2100
ED COOK, Transportation	355-5522

WASATCH MOUNTAIN CLUB, INC.
425 South 8th West
Salt Lake City, Utah 84104

ADDRESS CORRECTION REQUESTED
RETURN POSTAGE GUARANTEED

BULK RATE
U. S. POSTAGE

3.6¢ PAID

SALT LAKE CITY, UTAH
PERMIT NO. 2001

WASATCH MOUNTAIN CLUB, INC.
425 South 8th West, Salt Lake City, Utah 84121 Phone 363-7150

APPLICATION FOR MEMBERSHIP

To Board of Directors:

I hereby apply for membership in the Wasatch Mountain Club. I enclose \$2.00 entrance fee and \$6.00 dues (spouse \$3.00). The club event I have attended is: _____ on: _____ (date). I agree to abide by all rules and regulations of the club as specified in the constitution and by-laws and as determined by the Board of Directors.

Name (printed) _____

Recommended by ---

Signature _____

Member:

(If spouse membership, please include name

of spouse (printed) _____

and signature _____.)

Director:

Address _____

City _____

State _____

Zip Code _____ Phone _____

(Effective 1 Jan 68
Through 31 Aug 68)