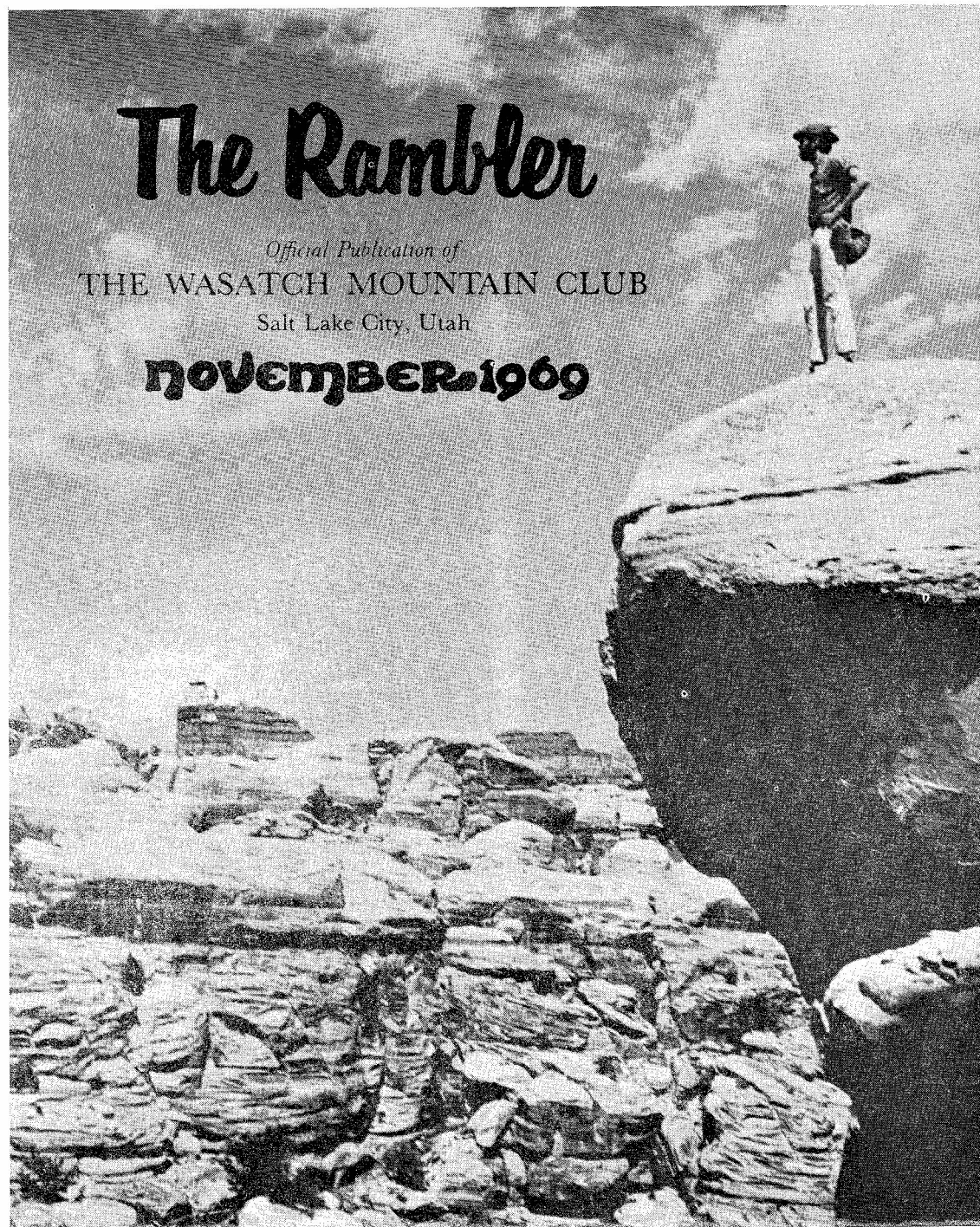


The Rambler

Official Publication of
THE WASATCH MOUNTAIN CLUB
Salt Lake City, Utah

NOVEMBER 1969



CLUB ACTIVITIES FOR NOVEMBER 69

REGISTRATION INFORMATION: Registration is not required for local, one-day outings unless otherwise mentioned. However, by registering with the leader you will be notified if the trip is cancelled. All outings generally leave the meeting place within 15 minutes of the scheduled meeting time. Register for bus-boat trips with the leader only by sending a deposit to the address listed. Leaders cannot register anyone without a deposit.

Registration with trip leaders for ski tours is even more important than for hiking. Through them you may glean information as to condition of snow, or lack of it, or too much, and weather; and cancelling or proceeding with the trip for any of these reasons.

Nov. 1
Sat.

OKTOBERFEST. Achtung! Achtung! Join us Nov. 1 at 8 p.m. for an evening of Bavarian fun and Gemütlichkeit at Hofbrau-West (WMC Lodge). Price \$2.25 includes Bier, Musik, Bratwurst, Sauerkraut, Kartoffelsalat, etc. German dress if you have it. For reservations call Le Roy Kuehl 363-6890.

Nov..2
Sun.

MT. OLYMPUS NORTH FACE Elev. 9,026 Rating 8.0. A traditional hike or climb; take your choice. This trip will probably wind up our summer hiking schedule, so let's finish it off right with a truly enjoyable and worthwhile trip.

Meet at 4001 South Wasatch Blvd. at 7:00 a.m. Leader: Ol' Dad Himself, Harold Goodro 277-1247. P.S. This is an advanced hike with parka and gloves.

Nov. 8, 9
Sat. & Sun.

FAMILY ROCKHOUND OUTING. Because of foul weather in October we are rescheduling this family trip. We will include Antelope Springs for trilobites on Saturday; Clear Lake for labradorite and Black Rock for obsidian and Indian artifacts on Sunday. Kids just naturally like to pick up rocks. On this trip they can really live it up. Take food, water, and bed for two days and one night. Meet at Draper-Riverton Exit (turn right) at 8:00 a.m. Saturday. Regroup in Delta, then follow the leader: Elmer Boyd 298-5537.

In the hope that the current storm pattern does not forsake us we are being a little daring this year and scheduling some November ski tours. This is done under the assumption that it is relatively simple to cancel a tour for lack of snow rather than miss the benefits of a possible early winter.

Nov. 8
Sun.

WHITE PINE SKI TOUR: BEGINNER. Because of the existing jeep road, this is an ideal early season ski tour, up the White Pine road. Register with leader, Carl Bauer, 355-6036, as he has no car and needs help getting to the meeting place; the mouth of Little Cottonwood Canyon at 8:30 a.m.

- November 9
Sunday
GRANDEUR PEAK TRAIL CLEARING. Please contribute a few hours of much-needed work on an often traveled trail. Meet at the Church Fork parking area in Millcreek Canyon at the leisurely hour of 9 a.m. Bring clippers, snippers, sickle, or a saw. (Leader - Charley Swift, 277-2267).
- Nov. 13
Thurs.
Conservation letter-writing party. A free beer or soda-pop for everyone who writes three conservation letters! Buy your own if you weaken after one or two letters. Bring portable typewriters if you have them. Members of the Conservation Committee will be on hand to brief you on issues. At Nick Strickland's, 7:30 p.m. 2151 East 9th South, phone 364-1568
- Nov. 16
Sun.
ALTA TO MT. WOLVERINE VIA TWIN LAKES PASS. INTERMEDIATE SKI TOUR. This covers some of the high country around Brighton and Alta and affords fine views of both areas and more. Meet at the upper guard station (furthest house behind the Forest Service garage at Alta) at 8:30 a.m. Register with leaders, Dogowitz and Perla (1-649-9672) so you may be kept informed as to snow and weather conditions.
- Nov. 22
Sat.
BRIGHTON TO ALTA (and maybe back again). INTERMEDIATE SKI TOUR. Another pleasant trip affording beautiful views of the high Wasatch. Snow conditions and skiers' wishes will determine whether this is to be a one way tour or round trip. Register with leader, Karin Dahlgren (359-0416) to check and to air wishes. Meet at the mouth of Little Cottonwood Canyon at 8:00 a.m. for car spotting.
- Nov. 27 - 30
Thurs. - Sun.
WYOMING SKI TOURING. Once again we will be planning some pre-season ski touring in Wyoming - the Tetons and Absorakas. Anyone interested contact Dennis Caldwell 278-2100; office 322-7664
- Dec. 5
Fri.
SKI TOURING SOCIAL. 7:30 p.m. This is the nominal theme and excuse for having a party. Periodically the frivolity will be interrupted by reasonably coherent discussions of ski touring equipment and advice to beginners. Light refreshments will be provided at moderate cost. Newcomers are especially welcome. HOST: Dennis Caldwell 4822 Fortuna Way (on Wasatch Blvd.)
- Dec. 7
Sun.
GAD VALLEY, ADVANCED SKI TOUR. On this date, we plan a sneak attack of Gad Valley in the hopes that this early in the season, Luftwaffe will be caught sleeping, assuming that there is enough snow. As of mid-October, there was 2 feet at Alta. Register with leaders: Ann and Gale Dick (359-5764), and plan to meet at the mouth of Little Cottonwood Canyon for car spotting at 8:15 a.m.
- Dec. 14
Sun.
BEGINNER SKI TOUR - LOWER WOLVERINE CIRQUE FROM BRIGHTON. This is a short scenic tour giving an opportunity to those who may have stayed overnight at the lodge Christmas Party to start off the touring season (snow permitting) with a relatively easy effort. This is especially geared for beginners with limited experience. Meet at the lodge at 10:00 a.m. Leader; Dale Green 277-6417.



To The Young WMC

Undaunted and indomitable band
Who tread your airy path beyond the
place
Where eagles roam! Forever may the Hand
That guides the storm and sunlight
grant you grace
To wander happy through this blessed
land.

Sam Thomas
July 1969

Dear Pete:

Hope your vacation went well.
You've certainly waited a long time!
I am submitting a poem to the Rambler
in case they ever need a "filler" or the
like. It came to me on the American
Fork twins trip this summer with the
Club.

I also enclose the poem you found
on Lone Peak. I think it works out as
a "free verse". The Rambler should
have it too! Looking forward to next
meeting.

Best Wishes,

Sam

Found in Summit Register, Lone Peak
by O'Dell Petersen, 40 years ago,
Author Unknown

She buildeth up, and she taketh down
She lifts up mountains with her
subterranean energy,
Then blasts them with her lightning
and her frost.
Thus grandly she rushes along the grooves
of change; and toward her unattainable
repose.
Or is it unattainable?
When equilibrium sets in, life ceases
and the world, thence forward,
Is locked in everlasting sleep.

PRESIDENT'S COLUMN

by Dale Green

Are you willing to get involved?
Your Club needs warm bodies to run for
the Board of Directors next year.
About the middle of December a nominating
committee will be named to find volunteers
to run on the ballot. We need people
who are genuinely interested enough to
do more than the absolute minimum
required of the job. If you think you

are interested, the present board would
like to invite you to a board meeting.
Please call me at 277-6417 so we know
how many will come as we meet in pri-
vate homes with limited room. Board
meetings are held normally on the first
and third of each month. Incidentally,
all board meetings are open to all
members, whether you are interested or
not in a board position.

Dr. Sam Thomas, our honorary member from New York, spends every summer hiking in our beautiful Wasatch Mountains. Pete, at the Club HQ phone, keeps track of him so if Dr. Sam doesn't report in a rescue can be started. Every year, Dr. Sam leaves a donation to the Club for this service. This year we were surprised to receive a check for \$200. The Board felt something specific should be done with the gift, so by unanimous vote we have formed the Sam Thomas Trail Fund. This fund will be used exclusively for trail repairing and clearing materials. Charlie Swift, who spent several summers clearing Appalachian trails, will be in charge of the Fund and scheduling trail clearing trips. Thanks very much, Dr. Sam.

By-law I.E has been changed to read: The Vice President shall be in charge of one of the following departments. This eliminates the V.P. as a separate position. He will be chosen from one of the other officers.

Pressure of other business has caused June Viavant, our Conservation Director to resign her position. Nick Strickland will replace her.

Congratulations to Inge de la Cour and Dick Neilson who were recently married in a 900 year old church in Denmark.

Dr. Chauncey Hall is spending 2 months in Peru on Project Hope.

Condolences to Jean Torreyson whose mother just died.

Club member Bob Irvine, a climbing ranger in the Tetons, was featured in an article in the Reader's Digest for his part in the spectacular rescue on the north face of the Grand Teton.



JG



HELP!!

Safety and Quiet vs. Ski Helicopters PLEASE WRITE LETTERS NOW

It would be gratifying to begin what currently promises to be a good ski season on a cheerful note; unfortunately this does not appear possible in the shadow of the impending helicopter crisis. Attention need hardly be drawn to the great benefits this invention has provided in the field of fire fighting and how welcome a sight it is to the injured skier in the boondocks, but the prospect of greatly expanded aeronautical touring in a heavily populated, thoroughly accessible mountain range merits the serious consideration of all skiers.

Once convinced of the various evils of this airborne charivari, one should become familiar with the various jurisdictional phases of the problem. The most crucial agency concerned is the Forest Service. They control most of the serviceable landing areas in the Wasatch at Alta as well as in the interior. By refusing permission to build heliports on land under their control and by prohibiting landings in the national forest they can effectively discourage this rapidly expanding menace. Also involved in current negotiations on the Alta scene is the Federal Aviation Administration (FAA). Various opinions have been expressed on their desire and ability to control helicopter operations; their main concern seems to be the imposition

of minimum safety requirements on heliport construction (lodge roofs are among several proposals until a suitable branch of the Salt Lake International Airport can be built). On the fringe of things are the county authorities, who have yet to be heard.

This is indeed an urgent matter, since helicopter enterprises are wasting no time in the attempt to sew up the rights to this business venture and ensure their continued and expanding operations. We invite those interested to express their views to:

Mr. C. StJohn
Forest Supervisor
Wasatch National Forest
125 South State Street
Salt Lake City, Utah, 84111

In addressing your remarks it would be well to emphasize the twofold nature of the problem in its relation to the enjoyment and safety of both the lift skier and tourer. Urge the Forest Service not to grant special use permits for the construction of heliports on the grounds that the protracted large scale operations are incompatible with the demands of a large population on a limited alpine area. Time is running out; immediate action is needed.



CONSERVATION NOTES

by June Viavant

Escalante

Broad support for an Escalante Wilderness is beginning to become evident. The New York Times of July 17 had an editorial supporting our canyon country parkway routing. Phil Hyde, who has done some of the Sierra Club's exhibit format books, has an article about the Escalante in the current issue of Audubon. Ed Abbey, author of Desert Solitaire - which every mountain clubber should read, has written an article on the Escalante should be in the November issue of Natural History.

The highway department still (4 months later) has not published the record of the June 11 hearing on the Bullfrog-to-Hole-in-the-Rock road. Fortunately I went down to look at the portfolio a few weeks after the hearing, and there were close to 100 letters protesting the road and about half a dozen letters supporting the road. People all over the country have written letters.

Those of you who have joined the Club since the Escalante Wilderness brochure was mailed out with the Rambler and would like to have one, send a postcard with your address to Escalante Wilderness Committee
P. O. Box 8032
S.L.C. 84108 (the zip code is essential or phone June Viavant, 364-1568, or Jack McLellan, 277-7214

Nixon Administration reduces funds

The Bureau of the Budget has proposed cutting the Land and Water Conservation Fund back to \$124 million. Congress last year authorized that it be maintained at a minimum of \$200 million for five years to purchase recreational areas.

Senator Moss has protested, saying "At this rate it will take 20 years to acquire lands already authorized. This move is nonsense and I hope the President knows that it is. This is a trust fund; it has nothing to do with the budget. It is separate from the budget expenditures."

Wayne Aspinall has refused to hold hearings on Park and recreation lands, claiming that he did not want Congress to take the rap for failing to act, when in reality the deadlock is the lack of availability of funds. This would not necessarily affect the Capitol Reef and Arches National Park bills, since all this land is now federal land.

LIFE Magazine articles

Life Magazine is running a series on Threatened America. The October 10th issue speaks to the problem of Highway Departments, and points out that perhaps the Highway Trust Fund is a major part of the problem. Read it.
AND

This is my last month on the board. Nick Strickland will be doing the conservation work from now on.

MT. MAJESTIC
MOONLIGHT
HIKE

by Dale Green

We spent several hours on top of the peak enjoying the tremendous view of the Wasatch Mountains bathed in moonlight and the lights of the cities below, enjoying each other's company and some wine and suds. Aren't you sorry you weren't there?

Signed: Danny Thomas, Bill Dobelle, Diana Kunze, Ruth Henson, Yenta Kaufman, Dave George, Serge Martin, Ann Roberts, Marcy Tepper, Mary Jane Tessler, and Dale Green

CATACT CANYON

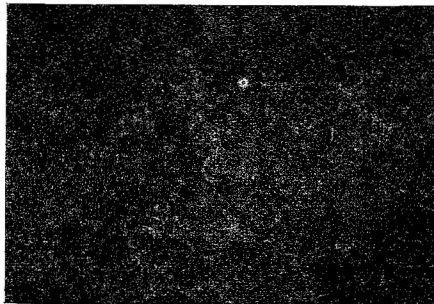
by Karil Frohboese

The Cannonball Express embarked--on what proved to be a rare experience (i.e., no breakdowns)--at 7:05 P.M. (undoubtedly another rare occurrence) from ye olde iyce plante on Wed., September 10th with 18 thrill-seekers headed for "The exciting trip of the year". Odin was praised continually throughout the four day jaunt, the first cry being heard at approximately 7:06 P.M.

The collection of river rats for this trip showed themselves to be not only thrill-seekers, but organized "pitch-inners" (boats and equipment were disassembled and reassembled in record time at all stops), and fun lovers (frolicking included happy hours moonlight swims, (see insert) limerick singing and water fights). The jollity began at Price when, Gerry, counting noses, asked June, bedded down in the back on the rafts and debris, how many people were back there with her. Came the answer, "Just one--(laughter)--at a time!" Wednesday night's entertainment concluded under glowing skies at 2 A.M. in Potash, Utah with a professional soft-shoe performance by Bob Everson and Gerry Powelson done to the tune of "By the Light of the Potash Plant."

On Thursday morning, it took what seemed to be only minutes to tie three rafts together, attach our motor to "Big Drop", arrange the major portion of the equipment on Old Leaky (raft turned baggage barge for three out of the four days), and to cast off. Waving good-bye to the Cannonball, we again petitioned Odin, this time, no doubt, to bring the land craft around to the Hite marina for our Sunday landing

Thursday and Friday of our trip was a fat-man's delight; paddleless floating, singing, swimming, sunning and funning...and marvelous communal breakfasts and dinners. A bad memory one could have of these two days was the hordes of marauding mosquitos



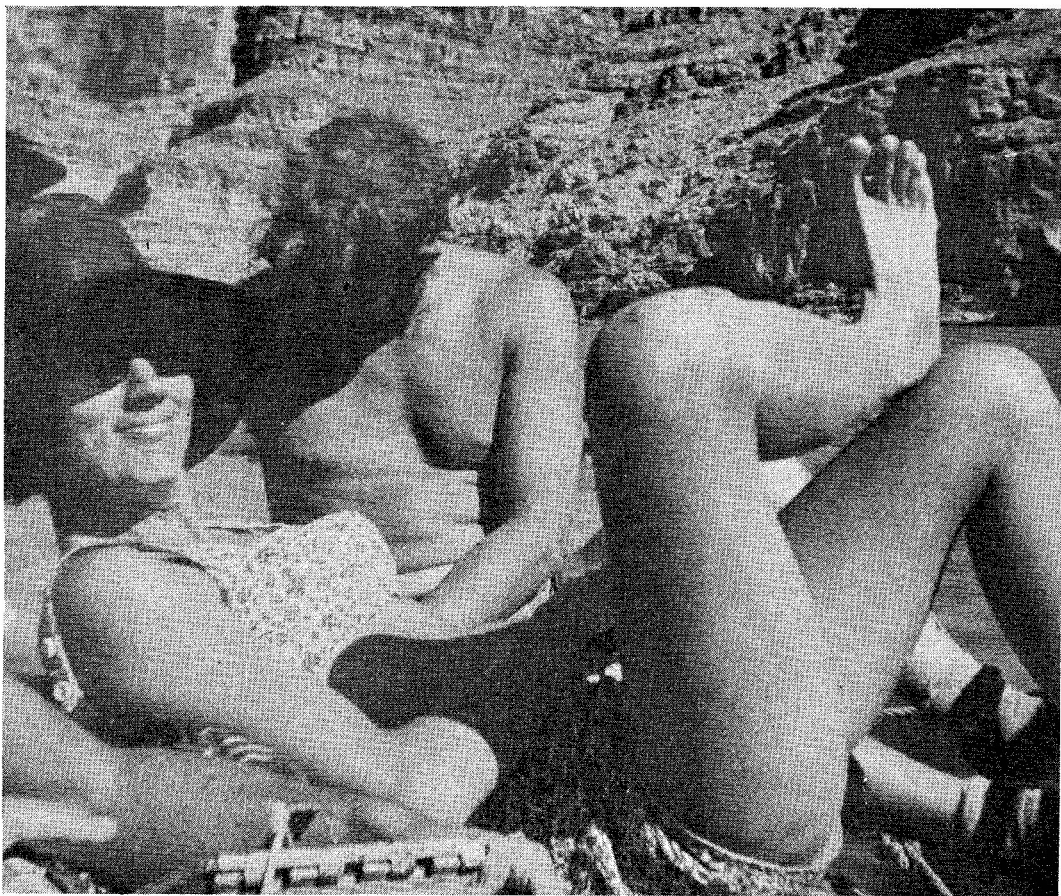
Moonlight Swim on the Cataract

that greeted us and gnawed on us at our Thursday evening campsite. (Who did steal my Cutters anyway?) The only other unfortunate occurrence was a Horrendous sand storm--which did drive away the pests, but also added an extra unintended condiment to Linda Rathbun's short rib dinner. (By-the-way, if anyone needs a great marinade recipe, Linda's is it.)

More than the beautiful sandstone formations just along the Colorado River were viewed by the red rock enthusiasts on Friday. Arriving at the entrance to Cataract Canyon at mid-day on Friday provided an entire afternoon

for most of the crew to take a wet-tennie-runner-blister-producing-10 mile hike at Spanish Bottom. The desert flora-fauna-fossil "nuts" traveled in and up toward the "Doll House" and "The Maze", while a handful of sloths guarded the rafts. This day was capped with Happy Hour in yacht club fashion, hosted by Bill and June who passed out Happy Hour invitations, flew the Happy Hour flag, and served hors d'ouvres on Happy Hour cocktail napkins. We even sampled smoked whale meat!

And now the big day arrives. Breakfast is gormandized, gear is hastily packed, boats are separated and loaded,



Cataract Canyon photo by Linda Rathbun



Cataract Canyon photo by Bob Everson

and we're off at approximately 9 A.M., entrusting our lives to four capable captains (Dick Snyder, Gerry Powelson, George Rathbun and Al Mathews). At approximately 7-8,000 ft.³/sec., the river proved to be not quite as fearsome as some of us had anticipated, but was, nevertheless, a glorious ride, catapulting only one crewman, Loyd McMahon, into the drink at Big Drop. Big Drop, three separate rapids in a distance of approximately 3/4 of a mile, provided the greatest challenge, and was given an approximate rating of 8-9 (in a scale of 1-10). After the Big Drop triplet, we beached for our one and only raft repair. Skull now has a perfectly patched slash autographed by Dick Snyder, doer, and Bob Everson, mender.

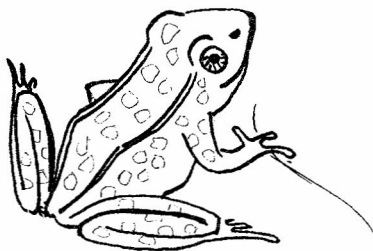
Roller coastering (the nausea quotient ran high at points) for 2/3 of a day was followed by the usual, unasked-for, up-canyon wind and a few hours of strenuous paddling. By evening we were extremely thankful for the delightful, and just about only campsite for quite a few miles. We had finally found some fresh water in a side canyon that afternoon and felt comfortably satisfied on our last evening on the Colorado with the abundance of good water, good food, good folk and good song by the blazing fire that glowed in our over-hanging amphitheatre campsite.

The 16 H.P. motor worked its heart out on Sunday. Again, up-stream wind managed to produce dismay concerning the possible number of miles left compared to the amount of gasoline we had brought with us. Much paddling was imminent. We assuaged the "blahs" with a refreshing swim-stop in the clearer waters of Lake Powell. And then on we went fighting our way slowly toward Hite. As we floated along, a tiny speck became visible in the distance. Shortly, a

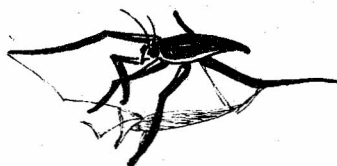
couple in a motor boat pulled up and advised that the marina was a mere 7 miles on, and that if we should need some gas they would be happy to get us some following their voyage further up the canyon. Overwhelmed by relief, the river rats were once again fairly animated. On into the afternoon, and after our friends had returned toward Hite, it once again began to appear as though we would have to flex our muscles against the wind. A spluttering motor ...concern...gloom. But then, there was that tiny speck again downstream, that, when it pulled up and stopped next to our rafts and asked if we'd like 5 gallons of gasoline AND a case of COLD BEER, appeared far larger than life size. After a lot of whooping and hollering, we waved Olive and Bill Behke of Boulder City, Nev. off serenading them with "Odin." Quoth Al Mathews, "So that's what he looks like!"

At the Hite marina we had good cause for celebration and did so with a colossal water fight-- which unfortunately did not impress our local audience, who suggested that a California group had done a lot better job of merry-making. Eventually, we loaded the Wasatch Cannonball--which had been so thoughtfully shuttled to Hite by Bud Reid--and wearily, we returned to Happy Valley on Monday morning, 2 A.M.

River rats: Leader; Gerry Powelson, Jean and Brian Cook, Laird Crocker, Bob Everson, Mary Jo Farrer, Karil and Bob Frohboese, Stew Harvey, Ruth Henson, Dan Lovejoy, Al Mathews, Loyd McMahon, Linda and George Rathbun, George Sears, Suzanne Stensaas, June and Bill Viavant.



39



39

news & notices

Salmon River Trippers:

Where is Roy Keir's river bag? He so kindly lent it to someone on the Salmon Trip. Borrower, please, he wants it back.

THANKS...

...to October Rambler mailers; Linda Rathbun and Karil Frohboese

...to November Rambler typist Jean Torreyson.

... Jen Giddings who helped me put the Rambler together this month.

ADDRESS CHANGED?

Please send postcard to Barbie Quinn c/o Club Headquarters. Include zip codes, old and new.

RAMBLER DEADLINE

...for all written and visual material is November 15th for the December issue. Send to Sally Nelson, 1218 Harvard Ave., SLC 84105 (485-0237) Please TYPE

Cover photo by Bill Viavant of Bob Everson near Spanish Bottom in Cataract Canyon.



PFEIFFERHORN VIA SLEET RIDGE

by Phil Nelson

A dauntless group and their loafered leader ruminated awhile upon the cheerless dawn at the mouth of Little Cottonwood. Then Tricia re-arrived, equipped to boot Charley, and we embarked upon the trail to Red Pine Lake, amidst downward-directed offerings.

Carol, Sally (see below for surname matching), and the shorter Jacobsens settled with the lake as reward; the rest slogged manfully, womanfully, and doggedly up the ridge where the offerings turned to intermittent sleet. Summit time was lunch time. A short view now and then between the cumuli but you had to be fast.

On the descent Milt, LeRoy, Phil, Danny and Dave turned left at a saddle to tour scenic Maybird Gulch, the other six retraced.

Problem for the Reader: With the aid of text and Appendix, figure out just who made the summit, if you're interested in that sort of thing.

Appendix: Hikers on that Sunday, September 21 were: Charley and Tricia Swift, Ruth Henson, Dave Smith, Carol Edison, Alden and Sally Wight, Milt Hollander, LeRoy Kuehl, Shelly Hyde, Gregg, Scott, and Richard Jacobson, and Danny Thomas. Plus the scribe and a dog.

CRISIS: PARKING ALTA

"The following plan to solve the Alta parking crisis was approved in principle by unanimous vote at the recent general membership meeting. It will be used as a guideline to encourage agencies to bring about a tractable solution to this problem. A copy has been sent to the Supervisor of the Wasatch National Forest."

BACKGROUND

The population explosion is finally overtaking and threatening to inundate Alta and Little Cottonwood Canyon. One of the most pressing problems is how to

accommodate several thousand skiers in this narrow, alpine canyon without doing violence to the rules of avalanche safety and to the natural environment so instrumental in attracting a large proportion of the skiing population.

In the past few years it has become evident that the present system of haphazard parking along the road when the existing lots are filled must be remedied. The two most obvious solutions to this dilemma are either to build more parking lots or to recognize, along with many other similarly besieged recreation areas like Yosemite, that the interests of the

public will be best served by a public transportation system. The idea of bringing skiers up to Alta by bus is not a new one. In past years it has been a simple matter to discuss it as superfluous, when people were able to transport themselves up the canyon and park with a minimum of inconvenience.

The time of decision is now at hand; do we want to turn Alta into a gigantic, unsightly, avalanche-threatened parking lot; or are we willing to change our habits and minimize the congestion by riding in buses to an area that can continue to provide the public with unsurpassed beauty along with recreation.

PLAN

1969-70*

1. Refuse permission to build new or extend existing parking lots.
2. Encourage Forest Service to acquire land in Albion Basin.
3. Establish contact with all agencies having jurisdiction in Little Cottonwood Canyon
 - a. State Road Commission
 - b. County Sheriff
 - c. Alta enterprises
4. Set up provisional schedule with bus company including a plan for acquiring parking space near the canyon mouth.

*if possible, limited bus service could be started immediately.

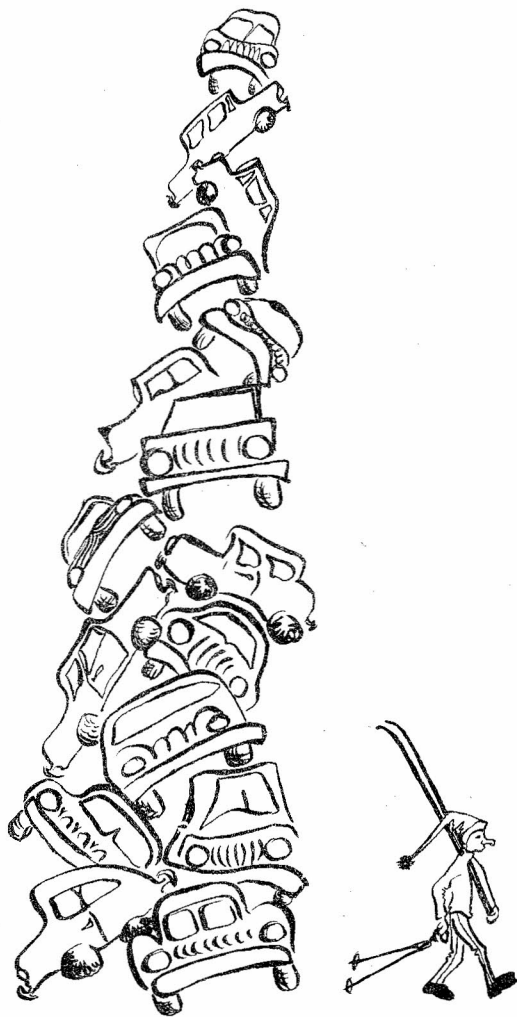
1970-71

1. Establish adequate bus service during weekend rush hours.
2. Convert upper parking area into a bus terminal with parking by permit only.
3. Restore half of lower parking lot to its natural state.
4. Erect public information signs in appropriate positions at both the upper and lower parts of the canyon.
 - a. No parking west of Alta to Snowbird

- b. "Lower Lot Filled" sign at entrance to canyon.
5. Establish parking areas near mouth of canyon (possibly school yards).

1971-72

1. Establish adequate bus service for heavy weekend and light week-day load.
2. Restore 2/3 of lower parking lot to its natural state.



KINGS PEAK

By Dale Green

Since more people have called me in the past few years for directions up

Kings Peak than actually came on the trip, I'll make this report in the form of self guiding directions. First of all, before going on any trip into a strange area, buy all the maps you can. With these, you will find you can answer most questions yourself. The local district ranger's office will give you the best maps for the approach roads to the Wasatch National Forest. Topographic maps are obtainable from the 8th floor of the Federal Building.

Go to Mountain View, Wyoming via Evanston. Seven miles south of Mountain View, the paved road takes a sharp right turn at a sign saying "Wasatch National Forest". Continue straight ahead on the dirt road for 12 miles to a road intersection going east. It should be marked "Henrys Fork". After 10 miles on this road a sign will point to "Henrys Fork Camp Ground $\frac{1}{2}$ mile". The drive only takes 3 hours so you can start early Saturday morning. However, don't underestimate the effects of the altitude you are about to climb to. I strongly suggest that you acclimate by spending the night in the campground at 9500 feet.

Dollar Lake, 9 miles from the campground, is where I recommend you spend the first night. The trail is well marked and crosses the stream at Elkhorn Crossing about 5 miles up the

fork. There are a few campsites higher up but they will only save you a few minutes in the morning and don't afford the protection of the big trees or the water at the lake. By the way, about 2000 head of sheep graze in Henrys Fork to take water purification tablets along. (Guess who speaks from experience! Ed.)

Two paths are obvious from Dollar Lake, Gunsight Pass and a direct route up a steep gulley. The direct route saves a mile but the steep gulley costs a lot of time and could be very dangerous if more than two people are in it at the same time. Once at the top of Gunsight Pass, angle around to the right climbing just high enough to avoid the vertical cliffs. Don't climb too high or you may have to drop back down. Once on the plateau the route is obvious. I suggest coming down the steep gulley if you are used to such things.

We placed a new register on the peak to replace the old one on the lower, south peak. A Sierra Club register was already on the peak. As you may have noticed in the picture in last month's Rambler the register could be better placed and a new cairn built. There are better cairns built along the trail.

On this year's trip were: Fred and Eveline Bruenger, Charles and Tricia Swift, Chuck Mays, LeRoy Kuehl, Sherm and Tom Dickman, Dave George, Bill Hughes and Dale Green.

Timberline Sports Inc.

WOOD GATHERING WEEKEND OCT 11-12

By Lyman Lewis

FOR SKIING

Ski parkas — Down
Shells

Knickers & Socks
Accessories

-- TOURING

Climbing skins & Skis
Snowshoes & Packs
Down clothing

-- AFTER

Down booties
After ski shoes



**2959 HIGHLAND DR
MON —**

With 5" of snow on the ground at Brighton and a bad weather forecast, we cancelled the woodgathering for Saturday. However, the cloud magician said Sunday would be clear so we decided to gather equipment and notify the happy workers. Well, Saturday turned out to be beautiful and Sunday a blizzard, but due to many willing workers the lodge basement is at least $\frac{1}{2}$ full of wood and still some uncut outside. Dan Lovejoy and Milt Hollander handled the noisy wood slicer most of the day with the rest of us splitting, carrying and sawing. Six big truck loads were brought down off Mt. Millicent where the new ski lift is being installed. Most of this has been cut and stored. Some still remains to be cut and anybody feeling energetic can find the necessary equipment in the basement and get some exercise. Please contact Lyman Lewis 277-6816 for the key.

The new refrigerator has been installed and the old one junked. A beautiful new ping pong table is in the lodge - thanks to Claire and Mel Davis. Many thanks to all the woodmen, and thanks also to Noel DeNevers who installed window catches and replaced broken panes.

The woodsmen (not aforementioned): Dean and Carol Withrow, Tom and Mimi Stevenson, Oscar Robison, Phyllis Anderson, Wolf Snyder, Elmer Boyd, Ruth Holland, Leon Edwards, Glen and Bryant Hollander; Jerry, Jane, Steve, David, Ray Daurelle plus 2.

TALE OF TWO PEAKS MILL CANYON TOKEWANNA

by Dale Green

Labor Day, a confused schedule and an unknown Peak held the attendance to Mill Canyon Peak to Chuck Mays and myself. This peak is 10,000 feet plus and is about 5 miles east of Timpanogos. The Rambler rating of 9 diminished to about 3 when we found we could drive to nearly 9000 feet on the new road from American Fork to Snake Creek. By following the ridge all the way the hike is easy and scenic, especially the view of Timpanogos. However, the road up American Fork Canyon is terrible and the road from Snake Creek is too long to recommend this for an annual hike.

Tokewanna Peak is a different story. We were on top of this 13,165 foot peak only 6 hours after leaving Salt Lake. A rating of 13 and a 5:00 A.M. start undoubtedly held the attendance to myself, Milt Hollander and Dave George. The drive to the base of the peak took only 3 hours. How close you get depends on your car. A low slung passenger car may add an hour to the hike. We went up the west fork of Blacks Fork as far as possible, then hiked up the first large branch to the left to gain the ridge. The upper 500 feet are typical Uinta hiking - large, loose quartzite boulders. We saw a marten only a 100 feet from the top. The register in the mailbox on top was in total shambles. Lightning had vaporized the hinges off the door and burned several large holes in the top. We had a little trouble recrossing the stream in Milt's car - ask Milt about it.

The three of us agreed that Tokewanna Peak is a must for an annual hike.

THAYNE PEAK

by Dale Green

Thayne Peak is my name for the small peak between Thayne Canyon and Porter Fork in Mill Creek Canyon. As far as I know the Club hasn't scheduled the peak before.

Our numbers were considerably bolstered by several prospective members wanting to join for the Zion Narrows trip. The brand new "Desolation Trail" leads to the saddle nearest the top but the old trail up the bottom of the canyon is still in good shape and saves 2 - 3 miles of walking so we took it. Maple trees cover this trail for the first mile and were all supposed to have changed for this "Fall Color Hike" but hadn't as yet. Those higher up on the canyon walls were brilliant red though.

A leisurely, hour long lunch was enjoyed on top along with the scenery. A few stayed on top to "contemplate their navels". The only thing I missed on this otherwise perfect hike was a nip in the air; it was very warm for the end of September. This hike should be done every year.

Along were: Michael Gasehler, Ann Wennhold, John Riley, Tony Hearn, Elmer Boyd, Ted Thaxton, Guillermo Pilar, Nancy Davidson, Rob Thompson, Lief Hendrickson, Alden and Sally Wright, Tom and Susan Heath, and Dale Green.



Wasatch Mountain Club business is conducted only on the first and third Wednesdays of each month. At that time, and only at that time, is the mail opened, new membership applications voted on, dues payments recorded, address changes made, lodge rentals approved, and all other business requiring board action conducted. All board members cannot attend all board meetings and although an effort is made to fill in during a member's absence, some business is held for action until the next meeting.

WASATCH MOUNTAIN CLUB

2959 Highland Drive, Salt Lake City, Utah 84106 Phone: 363-7150

APPLICATION FOR MEMBERSHIP

To the Board of Directors:

I hereby apply for membership in the Wasatch Mountain Club. I enclose the \$2.00 entrance fee and \$3.00 dues (spouse, \$1.50). Out of state membership dues are \$1.50 (spouse, \$.75). The club event I have attended is _____ on _____ (date). I agree to abide by all the rules and regulations of the Club as specified in the constitution and by-laws and as determined by the Board of Directors.

Name (Printed) _____

Signature _____

(If spouse membership please include name of spouse (printed) _____

and signature _____

Address _____

City _____ State _____

Zip _____ Phone _____

Recommended by:

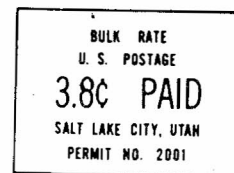
Member _____

Director: _____

(Effective 1 September thru 31 December, 1969).

WASATCH MOUNTAIN CLUB, INC.
2959 Highland Drive
Salt Lake City, Utah 84106

ADDRESS CORRECTION REQUESTED
RETURN POSTAGE GUARANTEED



BOARD OF DIRECTORS

DALE GREEN, President	277-6417
LEROY KUEHL, Vice-President	363-6890
BARBIE QUINN, Secretary	255-6396
EVELYN BRUENGER, Treasurer	485-2639
GERRY POWELSON, Boating	1-756-3004
NICK STRICKLAND, Conservation	364-1568
NOEL DE NEVERS, Entertainment and Recreation	363-1307
DICK BELL, Hiking	254-4555
LYMAN LEWIS, Lodge	277-6816
CAROL WIENS, Membership	487-2584
MAX TOWNSEND, Mountaineering	363-2269
SALLY NELSON, Publications	485-0237
DENNIS CALDWELL, Ski-Mountaineering	278-2100
RALPH HATHAWAY, Transportation	485-0257