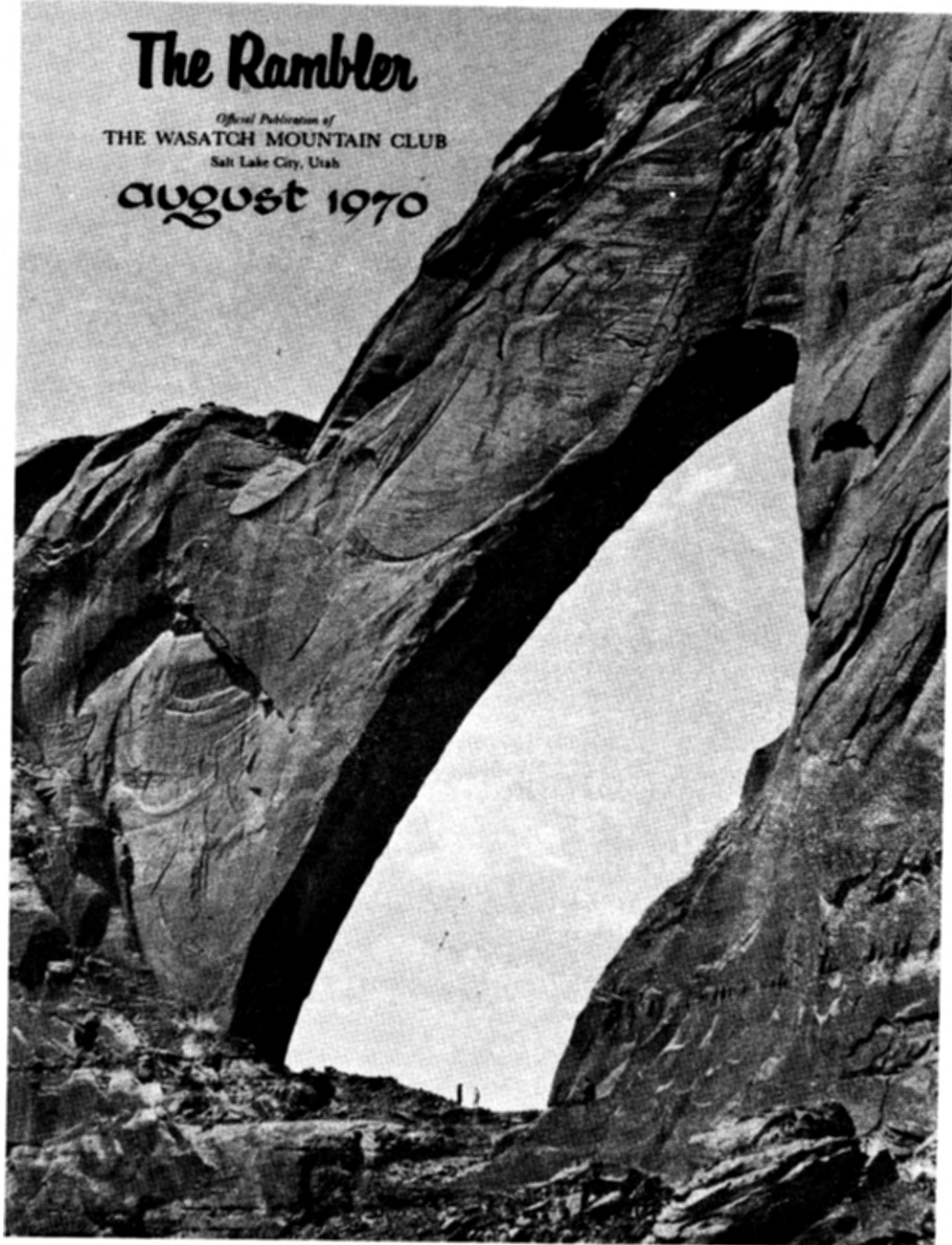


The Rambler

Official Publication of
THE WASATCH MOUNTAIN CLUB
Salt Lake City, Utah

august 1970



club activities^{for} august¹⁹⁷⁰

REGISTRATION INFORMATION: Registration is not required for local, one-day outings unless otherwise mentioned. However, by registering with the leader you will be notified if the trip is cancelled. All outings generally leave the meeting place within 15 minutes of the scheduled meeting time. Register for bus-boat trips with the leader only by sending a deposit to the address listed. Leaders cannot register anyone without a deposit.

For river-trip cancellations less than a week prior to the trip, the Club must retain a \$5.00 registration fee.

Aug 1 LAKE BLANCHE - Rating 5

Sat This is the third time during this season that we will take this very popular hike which is well suited for families. The area around the lakes is one of the most scenic attractions in the whole Wasatch. Meet at the Mouth of Big Cottonwood Canyon at 8 a.m.. Leader: Shelly Hyde 363-9564

Aug 1 TWIN PEAKS via TANNERS GULCH - Rating 11

Sat This hike was scheduled to go over Lisa Falls. Due to snow conditions the route was changed to Tanners Gulch - Sunrise. Register with Caine Alder, 487-0485.

Aug 6 EVENING CLIMBING at STORM MOUNTAIN

Thurs

Aug 8-9 RUBY MOUNTAINS

Sat-Sun No definite peak or route is planned. We mainly want to learn more about this range, and the climbing opportunities that are available there. Hikers welcome! Contact Max Townsend for further information. (DAY-364-4132) (EVENINGS-363-2269)

Aug 8-9 TETON HIKE

Sat-Sun This weekend we will have a flexible schedule depending on the interests of the group. We will plan to camp in the valley and the objectives may be Alaska Basin; Mt. St. John or some of the less frequently visited peaks of the range like Mt. Wister. The effort will be comparable to the Club's longest Wasatch hikes. Register with leader: Dennis Caldwell 278-2100 by Thursday evening to arrange details.

Aug 8-9 SNAKE RIVER CANOE TRIP

Sat-Sun We will run a fine stretch of the Snake from Palisades to Heise. There is some swift water, and some small rapids, if you look for them. Come and see it and then write your letters against the Lynn Crandall Dam. Leader: Jim Byrne 359-5631.

Aug 8 TRAIL CLEARING IN LAMBES CANYON

Sat Thanks to Sam Thomas who provided the funds, the club now has its own trail clearing tools. If you enjoy your mountains come out and pitch in for a few hours of work. The club is probably the heaviest user of the trails in the Wasatch and it should be needless to say that we are obligated to show our appreciation by helping the forest service in its maintenance work. Leader: Charly Swift 277-2267

Aug 8-9 LODGE FAMILY WEEKEND

Sat-Sun Have you and your children often wondered about the names of all those beautiful mountain flowers? Then here's a chance to gain some first hand knowledge through a NATURE WALK on Sunday morning beginning at the Lodge. Come Saturday afternoon, share POT-LUCK-DINNER and stay over for the informative nature walk. Your weekend hosts will be Mike and Mary Belangie 328-5491 or 486-9440. Please register if you intend to participate in the pot-luck-dinner. 75¢ for member, \$1.25 overnight fee. Guests welcome.

Aug 9 NEFFS CANYON TO THAYNES - Rating 6

Sun This is a low intermediate hike through the wooded area between Mt. Olympus and Millcreek Canyon. Meet at the Olympus Shopping Center at 8 a.m.. Leader: Oliver Richards 484-8097

DON'T FORGET - PARUNUWEAP CANYON and its beautiful Big Springs area on Labor Day.

Aug 9 PROVO PEAK - Rating 10

Sun This peak south of - and almost as high as - Timpanogos is seldom visited by club members. Meet at the Draper Freeway Exit at 7 a.m.. Register with Leader: Dick Bell 254-4555.

Aug 13 EVENING CLIMBING AT STORM MOUNTAIN

Thurs

Did you register for PARUNUWEAP CANYON?

Aug 14 MOUNT OLYMPUS MOONLIGHT - Rating 8.5

Fri Olympus offers one of the finest moonlight hikes along the Wasatch front. Let's start the weekend with an Olympic "Clair de Lune". Meet at Pete's Rock at 6:30 p.m.. Leader: Frank Atwood.

Aug 15-16 FAMILY FLOAT TRIP

Sat-Sun Sunning, swimming, and scenery will highlight this family float down 35 miles of the Colorado from Cisco to Moab. Waterfights will substitute for rapids in keeping the participants cool. Camera buffs will capture beaver, blue heron, Fisher Towers, and the La Salles along the way. Register with Ruth Hensen 364-4317. Work party and what to bring session 7 p.m. Monday August 10th at the Ice Plant - 430 W. 2nd N. Fee: adults \$17 children \$10

Aug 15 MT. AIRE - Rating 3.0

Sat It's family time. Forget the housecleaning and have a pleasant morning going up this peak in Millcreek Canyon. Meet at 9 a.m. at the Olympus

Shopping Center. Leader: "Hurrah, to have her back walking" - Scotty Imber 278-2430.

Aug 16 LADIES HIKE (no high heels please)
Sun Send the boys up Mt. Raymond and lets have fun. Grace Ormsby (364-4465) will be your leader for a pleasant walk up Mineral Fork. Meet at the mouth of Big Cottonwood Canyon at 8 a.m..

Aug 16 MT. RAYMOND via BUTLER FORK - Rating 6.5
Sun This is one of the more popular hikes in the intermediate range. If you are more vigorous, you can hike up Gobblers Knob before going to Raymond. An alternate descent route can be taken if so desired. Meet at the mouth of Big Cottonwood Canyon at 8 a.m.. Leader: Oscar Robison 322-2310.

Did you register for PARUNUWEAP CANYON?

Aug 20 EVENING CLIMBING AT STORM MOUNTAIN
Thurs

Aug 22-23 WESTWATER - advanced

Sat-Sun A short but exciting stretch of the Colorado, Westwater has always offered plenty of thrills. This year, if trip conditions permit, we will take a flat bed truck so that the canyon can be run both Saturday and Sunday and the boats left inflated. Register by (and attend the WORK PARTY) 6:30 p.m. Monday August 17th, at the Ice Plant. Leader: Cal Giddings 359-2588 (day 322-6683) Fee: \$18

Aug 22 RED PINE - PFEIFFERHORN - Rating 10
Sat The rating should indicate that this is an advanced hike. If you feel, however, that for you Red Pine Lake would suffice (rating 4.5) just come along. You have to register for the Pfeifferhorn with the leader. Meet at 7 a.m. at the Y, Little Cottonwood Canyon. Leader: John Riley 485-2567.

Aug 22-23 KINGS PEAK (note change of date!!) Elevation 13,528

Sat-Sun Utah's highest peak beckons again. Hopefully, the Uinta rain gods will be put to sleep for a weekend, thus providing an opportunity for the more endurant hiker to do the round trip in one day. We will divide into two groups, one group (backpackers) will stay overnight in the vicinity of Dollar Lake and attack the peak on the second morning, the other trying to make it in a single day. Adequate clothing (rain gear) is a must for this trip. For information call Fred Bruenger 485-2639

Aug 23 BRIGHTON RIDGE RUN

Sun This hike will be to Snake Creek Pass, then follow the ridge over two unnamed peaks (both over 10,000 feet) across Pioneer and Sunset Peaks to Catherine Pass (if you are short of time or stamina you can leave the group here and return to the lodge). From there we will duck over Tuscarora, Mt. Wolverine and Millicent down and back to the lodge. Meet at the mouth of Big Cottonwood Canyon at 8 a.m.. Leader: Boone Newson 277-5783

Aug 27 EVENING CLIMBING AT STORM MOUNTAIN
Thurs

Aug 29 FERGUSON CANYON

Sat This hike was taken earlier in the season and some trail clearing was done in the brush oak area, making this route more pleasing. For those who want to continue on to Storm Mountain, an opportunity will be provided to go on. Meet at the mouth of Big Cottonwood Canyon at 8 a.m.. Leader: Rob Thompson 484-0110

Aug 29 MT. OLYMPUS TRAIL CLEARING

Sat Almost every active club member goes up Mt. Olympus once during the year. So you should have noticed that a short section of the upper trail is overgrown quite heavily. However, if we get a good turnout on this work hike, we can clear the trail in a very short time and then have an opportunity to enjoy the view from the top. Want to pitch in an hours work "resting from labouring up blister hill"? See you at Pete's Rock at 7 a.m.. Leader: Jim Hatheway 278-6526.

Aug 30 NO HIKE - LODGE WORK PARTY

Sun lunch and refreshments on us....

Sept 5,6,7 WIND RIVERS. Climbing at Big Sandy Lake Cirque-of-the-towers area.

Sept 5,6,7 LODGE HOLIDAY OPEN HOUSE

If you do not plan to take to the highways for a long weekend away from the city, come at anytime during the Labor Day Weekend to the Lodge. Margaret Strickland (359-3176) will be your hostess. No need to register. Come for a part of a day or for the entire weekend beginning noon Friday.

Still time to REGISTER for PARUNUWEAP CANYON.

Sept 5,6,7 MIRROR LAKE to MOON LAKE - Uinta Backpack Trip

Sat-Mon For a fascinating trip into the High Uintas call Peter Preuss 467-8284 before September 2nd.

Sept 5,6,7 PARUNUWEAP - Powell Centennial Hike

Sat-Mon Between September 10th and 12th 1870, Major Powell and a small party coming up from Kanab entered what is now the east-fork of the Virgin River and began to explore the canyon. The Indian name of the canyon is Paru'uweap or Roaring Water Canyon. In places it is similar to the Zion Narrows but with a more interesting river. You can read a vivid description of Powell's journey in his book "The Exploration of the Colorado River and Its Canyons".

With permission of the National Park Service, we are planning to place a small plaque commemorating Powell's exploration at the most exciting place in the canyon, right where the river, shooting through a channel no wider than 3 feet, has a waterfall more than 40 feet deep.

If you haven't seen this canyon with its beautifully colored narrow walls and its abundance of tumbling springs of cold, clear water and a virgin vegetation, you have not seen Zion National Park. A small group went down this canyon a year ago and Kathy Kellet gave a colorful account of that trip in the October 1969 Rambler. Total distance to hike is about 25 miles.

This is the trip of the year! Don't miss it. We will take the bus to avoid a long shuttle. No Zion Narrows hike is presently being planned. (Bus fare is still only \$13.00). Register early with Fred Bruenger 485-2639 before September 2nd.

Sept 5 HONEYCOMB CLIFFS FROM THE LODGE

Sat An intermediate hike past Twin Lakes. Meet at the Lodge at 9 a.m..

Sept 6 WHITE BALDY - Rating 7.5 - Elevation 11,321

Sun This neighbor of the Pfeifferhorn is approached from the south rather than by the usual northern route. Meet on the northeast corner of 33rd South and State Streets at 7:30 a.m..

Sept 17-20 HELLS CANYON

Thurs-Sun Leader: Jim Byrne 359-5631

THANKSGIVING - Salt Trail and The Gorge of the Little Colorado



frohboese, nelson and nelson by nelson

Which Hardy-Boy will be the first to walk?

BOX ELDER PEAK

by Gerhard Henschel

The summer had moved in over night. The sky turned blue and the temperature reached 86° in the Valley during that Saturday, May 16th. There was a lot of snow in the mountains and it was several feet deep on the ridges and we had to take a long steep ridge to get to the peak.

Dick Bell was our leader. It was hard tracking. Roger Siglin and I took turns in relieving Dick from the toil; the snow broke just before one put the last bit of weight on the next foot. The higher we got, the deeper we broke in. It was fun watching each other sink into the snow and then trying to get back out.

We got hungry. Twice during the climb we rested and ate. After 6 1/2 hours came the reward: the beautiful view down into the valley and Utah Lake - over to Mt. Timpanogos and, even further to the left Heber Valley in the distance - and of many white peaks all around.

A cold wind was blowing at the peak, and nobody felt like digging out the register from I don't know how many feet below the surface of the snow. So after a little rest we started back down the ridge we had come up. Now we broke in even deeper up to the waist; our pants got soaking wet. At the first saddle we left the ridge and slid down the slopes; Roger tried it on his back - head first. We finished the hike tired and happy at 5 p.m., thanking Dick and the weather for a great day. Participants were: Dick Bell, Ted Thaxton, Roger Siglin, Mike Dalton, Lyman Lewis, Bill & Ronny Rosecliff, Ivan Cendese and Gerhard Henschel.

MT. MAJESTIC

JUNE 20, 1970

by Rebecca Price

Elmer Boyd led 15 hikers through the retreating snow up the mountain in a pleasant combination of sun and cool breezes. This was billed as an easy short hike which it probably is when the trail is dry and can be found, but today the exposed trail was hidden along the ridge near the top of the mountain. Most of the ascent was entirely on snow. We lost one hiker, who had worn sneakers, to the wet snow and cold. She elected to wait along the trail for Sara to return. Sara, who was not out to make any hiking records, but "to see that everyone enjoyed the hike," remained as rear leader for those of us who like to hike slowly and pause to enjoy the scenery more often than our counterparts. Kay and Rebecca decided, within "400 feet" from the top that the scenery looked more interesting and besides Rebecca was having trouble with a tired muscle in one leg, so they sat down to wait for the others to return.

The down route was easier with a few enjoyable "sit slides" to shorten our descent. We straggled in to our base at Brighton at approximately 1 p.m.. A group of seven visited the Wasatch Club Lodge and stopped at the Majestic Inn for drinks and interesting conversation.

Time for hike: 4 hours. Those who attended: Frank Atwood, Rebecca Price, Kermit Earle, Stan Rowband, Dr. Sidney Velick, Bill Drake, Martha Velick, Tina Langhtz, Ivan Cendese, Elmer Boyd, Lynn Landmasser, Pilter Guillermo, Jean Torreyson, Kathy Fjeldsted, Shelley Hyde, and Leader, Sara Weller.

From the REZ

Know Your Wasatch Week is over! At this point we might ask, what was accomplished, what was gained? I am not certain of the answers to these questions, but I can comment on the various events that took place.

The Pancake Breakfast was organized by Barb Lovejoy and Denna Wright. I am not certain if I even know everyone who helped out on that event; it was a big job. Barb told me she served something like 350 people. Senator Moss was there and said a few words about conservation. Congressman Burton and Governor Rampton were also invited, but were unable to attend. Following the Pancake Breakfast the nature walks started at the meeting of the glaciers area. I would guess attendance was around 35 people. Nick Strickland helped organize the guides for this event.

The first of the evening lectures started that evening with Gale Dick talking largely about hiking in the Wasatch. The Climbers demonstrations on rock climbing in the evenings before the talks. Attendance varied considerably on these, but there was generally some kind of an audience. Max Townsend organized the climbers.

The evening lectures were of uniformly high quality. In addition to Gale Dick, Dean Brimhall talked about the early days of climbing in the Wasatch and donated to us a number of pictures of

winter climbs in the Wasatch done largely in the late teens and early 20's. Armand Eardley gave a nice talk on the geology of the Wasatch and Walter Cottam followed with the plants. The mammals of the wasatch were discussed by Rey Remund, who showed movies largely of moose and buffalo (technically not in the wasatch, but interesting to see). Hal Lamb ended the series with a beautifully illustrated talk about birds, featuring some excellent close-ups. I would estimate attendance at each of the evening talks was around 75-100 people.

The senior citizens' day was organized by Wolf and Elfrieda Snyder and Carl Bauer. I understand they had approximately 30 guests at the lodge for a slide program and short hikes.

The After-Hours Sunset Hike was organized by Oscar and Phyllis Robison. We expected a low turn-out for this event and we were not disappointed. I think the assistants outnumbered the guests, but it was a nice hike anyway.

Louise Hollander and Diana Schoenberg hosted Ladies' Day at the Lodge, which featured short hikes and free baby sitting. The attendance was approximately 30.

The Canyon Clean-Up Day was organized by George and Linda Rathbun, and Bill and June Viavant. I would estimate about 50 people participated. Many of you saw the heap of litter collected from Big Cottonwood and Millcreek Canyons. It was a veritable pile, but it was a pity there was not a larger turn-out here, because so much more could have been done.

The Central City Children's Day featured short hikes and free lunch for the kids at the lodge. Organized by June Wickham, this was one of the better attended functions. Mureen Ogden, Denna Wright, and Barb Lovejoy did all the cooking. Over 120 children made the trip to the lodge and participated in the program.

The Moonlight Hike had about 60 participants and was organized by Dick and Joan Snyder. Everyone had a fine time from what I heard.



In addition to the above people, many others provided organizational help. Noreen Ogden did much of the original organizing and obtained "volunteers" to head the various activities, as did Benita Jackson, who also handled the publicity. These two people put in a fabulous amount of time and effort. John MacDuff kept Storm Mountain going and did new posters daily. Liz Choules also made posters. Sally and Phil Nelson and Kay Berger prepared the program. Gerry Powelson was the transportation chairman and provided bus services when needed. Dotty Byrne organized the phone answering service and Laura Conner maintained the information table at Storm Mountain. I know I have forgotten many people who helped, and to them goes the special award of "unknown volunteer".

A few masochists have been heard to utter that it would be great to make this an annual event. I usually sneaked away when I heard that sort of talk, but it could be done. Everyone learned a

great deal from the experience. Primarily we found how difficult it was to get people out. Benita did a great job getting publicity, and we were afraid we would be overwhelmed. This did not happen however, and in spite of radio, TV, and newspaper coverage on a lot of the events, greater public participation would have been desirable. The events themselves were all of uniformly high quality, people were well-organized and knew what they were doing. The Club has plenty of talent and I was happy to participate with all the people who made it possible.

In conclusion, I think a few people in the community now know that there is a WMC, who didn't know it before. Some people certainly got the message that the Wasatch is a great place, and that we are going to have to take measures to help keep it that way. I have received many calls about the program from all sorts of people, without a single unfavorable comment. Thanks again to everyone who contributed to the program.

ZION CANYON

by Bob Cook

Friday evening, June 19th, saw the participants camped either on the approach to Orderville Canyon, or in Zion Canyon itself. By 7 a.m. Saturday breakfasts were out of the way, and by 8 a.m. the group was assembled at the head of Orderville Canyon and underway. Incidentally, Friday night was made

really glorious by a full moon, with about one million candle power. It was some sight when it rose above the canyon walls, a great thrill.

Our leader, hereinafter called Moses, but formally known as Fred Bruenger, started the Israelites down canyon on a beautiful warm morning. It was necessary to use a rope to get into the canyon itself, due to the very steep sides at the beginning of the hike. This saved much time in the starting gate, so to speak and acquainted many of us with the use of the rope, which came in very handy later in the day.

For those who have never had the great privilege and pleasure of being there, let it be said that the start of this wonderful trip begins in very picturesque country, rather heavily wooded with pine, where the canyon widens out in various places, lots of grass and vegetation is present. It was warm, but not uncomfortably so, as we got under way. After several miles of walking in the canyon wash, in fairly open canyon country Moses led us into the wilderness, but instead of parting the sea to let us pass, he parted solid rock walls to lead us out of Egypt.

A more dramatic and interesting hike would be hard to find. As we descended lower and lower, the walls got closer and closer together and one can readily understand the danger of flash flooding in this area. Our first really steep descent, just after our first rest stop, led us from the comparatively wide and wooded canyon, into the chasm. At this first stop, we were in the shade of beautiful Ponderosa Pine, which we were not to see again except by looking up from 500 to 1500 feet where they hung on the sides of the canyon above the gorge. This in itself was a matter of great interest to all of us, as many of the pine so

far overhead grew out from the all of the canyon at unbelievable angles in order to get to the sun. Often one could look up many hundreds of feet, from the deep shadows of the canyon floor, and see in brilliant light, the forest gleaming in the sunlight. BEAUTIFUL!

As we progressed further toward the Virgin River Canyon, the Orderville Canyon became narrower and narrower with weird bends and formations, with interesting erosion patterns, and with logs lodged above the canyon floor, from wall to wall, left there by floods. If my memory serves me correctly, we made four rope descents under the ever careful supervision of Fred Bruenger. To a beginner it was wonderful to have so much competence at hand, which was so ably displayed by our leader. Jim Byrne was also a tower of strength in the sticky places and in one place we had the option of going down by rope, or using the "Byrne" elevator technique, which consists of placing all of your weight in his hands, claw like mad with your fingernails, and end up on terra firma, bless it. Speaking of Jim Byrne, his wife Dorothy was curious about a flower high on a wall above the floor of the canyon, so Jim scrambled up a seemingly perpendicular wall with a small crack in it, and cast it down to Dorothy. Quite romantic, and an enviable display of strength and ability.

Eventually we came to deep pools in the stream bed of the canyon, into which we had to descend, and pass back down to those standing in the water, armpit deep at times, and moving, in order to protect cameras etc., Eveline Bruenger standing in this deep water did yeoman service in this department. Unfortunately, one of the packs tossed down some 15 or 20 feet had some article in the bottom which got by Eveline's out stretched arms, and she sustained a rather nasty blow, with a classical black eye as a result. Not the slight-

est attention did she give this incident, which must have been darn painful.

Well, to get back to our leader "Moe", he led us between the walls, but he was unable to hold back the waters, and as a consequence there was much splashing and playing in the water, by this time fairly clear, with many deliberately baptizing themselves by immersion on any and every occasion. It was lots of fun, and while the water was cool, the air was warm, and the combination was a delight. Low in Orderville Canyon, the water is a fair little stream, and at the confluence of the Orderville and the Virgin River Canyons there is lots of water, with a goodly current, as anyone who has been to Zion Canyon knows.

In many places water seeped through the sandstone formations, making very verdant and beautiful areas of growth, where Columbine and other flowers and moss and vegetation of all sorts grew in splendid and beautiful displays. The last of the hike consisted of staggering over moss covered rocks of the Virgin River, with water hip deep at times. The slipperiest rocks of all creation must lie on the bottom of the Virgin River. While many of us were tired, we were revived and inspired by the utter beauty of the Zion Narrows. We staggered ashore at the end of the trail that leads upstream to the narrows at 5:30 p.m.. Then after some complicated car shuttling we all returned to Zion Canyon Campground. We are much indebted to Barbara Nelson and to Barbara Kuehl who stayed in a very hot area all that day, in order to do the shuttle duty, which made this trip possible. Our heartfelt thanks.

The group was comprised of: Eveline & Fred Bruenger, the leaders; Dorothy & Jim Byrne; Ann & Phil Wenholdt; Jayne James; Joy & Dick Fast; Leroy Kuehl; Russel (?); Bob Nelson and Bob Cook.

TO HIKE OR NOT TO HIKE? HOW TO MAKE A DECISION

by Barbara Evans

Five "not very bright" people - 4 men, 1 woman - convened outside the lodge a.m. Saturday June 13th - Mt. Millicent the supposed objective. Poor choice - hiking, that is - with the weather so uncooperative. Looks sort of bad. Snow's really sloshy. It's gonna be cold. I sure pushed myself to get out on a morning like this. Should've stayed in bed. Well, I'm still game (this from the youngster). I have no intention of going hiking in this weather (from the gal, of course).

Now, any really intelligent woman knows in a situation such as this she must do something to force a decision. With quick thinking and the help of slushy snow, such a woman would naturally back her car off the road. But, a woman wouldn't do such a thing unless she was sure a person

like Gerhard would be equipped to correct the predicament.

So, the four men cheerfully (even the *#!** were cheerful) arranged chains, cable and jack; and shoveled snow and placed rock under wheel. And wouldn't you know, everything worked perfectly the first attempt! The car eased up to a proper position onto the road and was backed by ~~Dail~~ to safety.

All this took less than an hour, by which time the wind was becoming gusty and snow was descending in light flurries. Of course there was a unanimous decision to have a cup of coffee at Roy's general store before returning to the valley - 5 dry and warm individuals who will hike another day - sans soggy weather!

Hikers???: Gerhard Henschel, Shelly Hyde, Dail Ogden, Frank Atwood, Barbara Evans.

FERGUSON CANYON TO STORM MOUNTAIN

by Sam Allan

The Ferguson Canyon hike? It was like this, see, a dozen of these cats started from the mouth of Big Cottonwood with Alexis and Carla and their little nipper Eric. packed like prunes in Alexis' four-wheel drive. Everyone was saying what a grand day for a group hike. Ha! Grand it was, group it wasn't. At least not after we dismounted and hiked to the narrows that are so lovely dark and deep. By then the fast cats were way up front and the slow ones way behind and nobody knew where nobody was. Even the trail was lost.

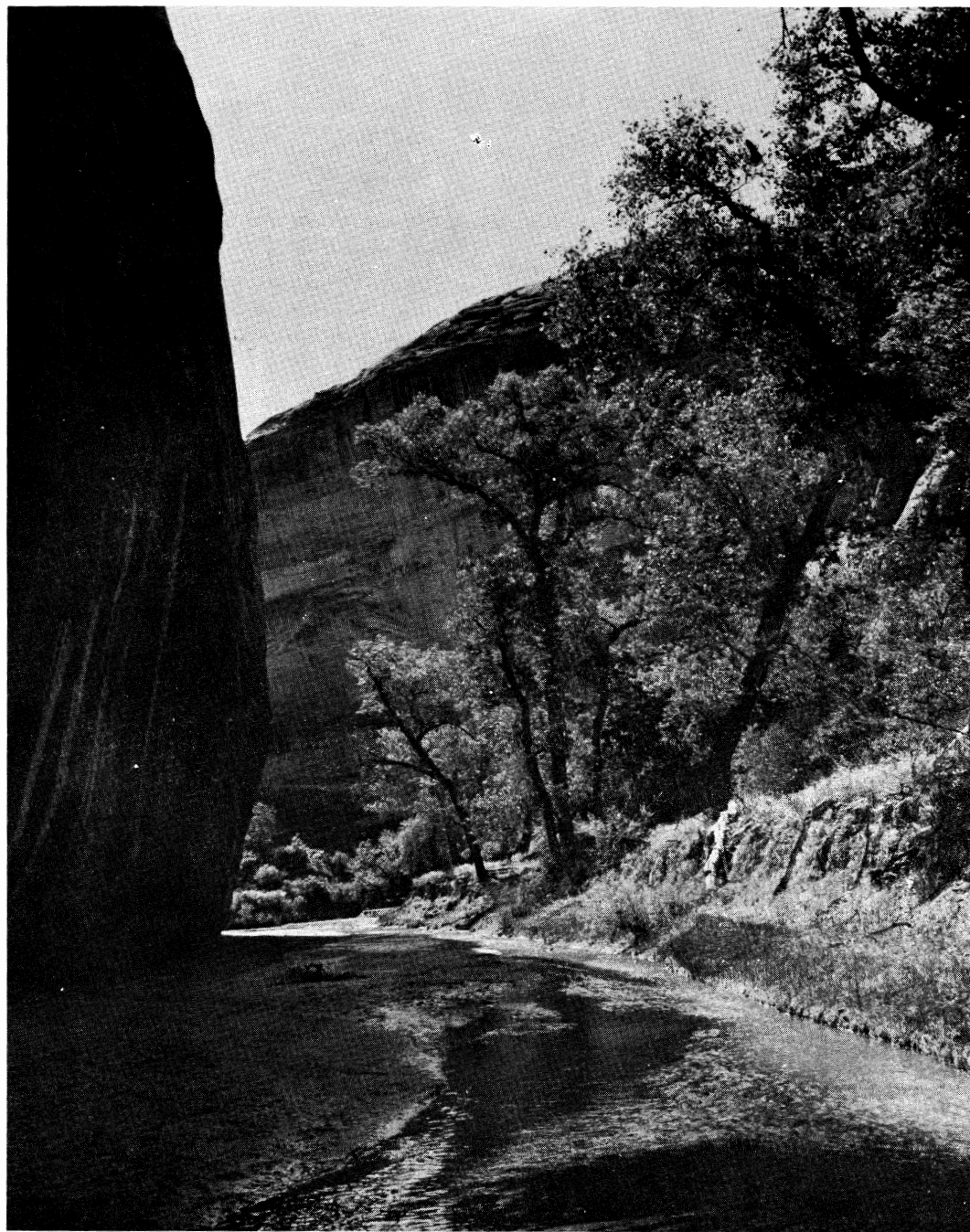
Streamlined Sara and Salt Desert Sam, making remarkable progress in the wrong direction, spied a peak. Sara guessed that one was Storm Mountain. Sam guessed another one. Sara heard what she thought was a voice and called a Yoo Hoo. Back came a Yoo Hoo.. Hoo.. Hoo from the mountain. Then, after

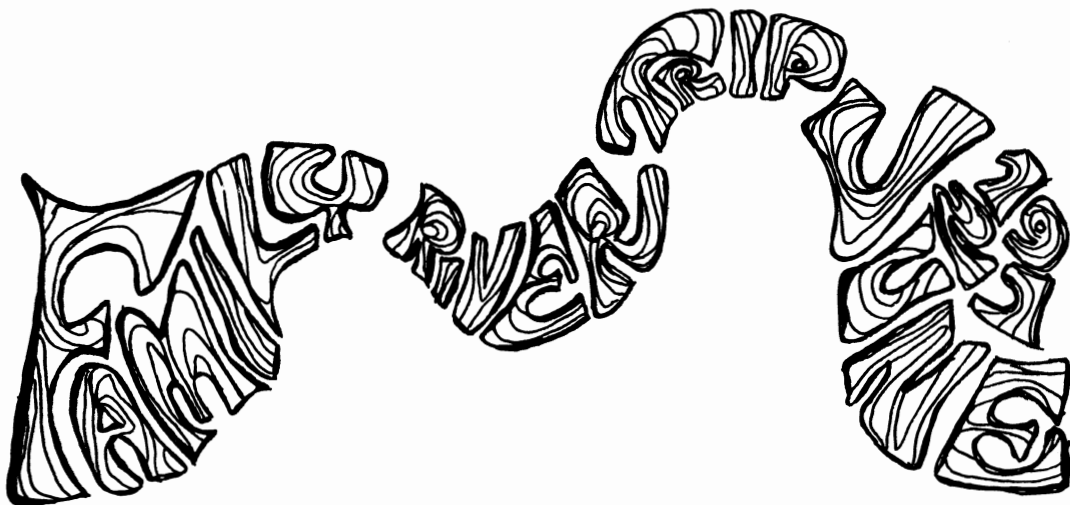
crossing the flowery upper meadows where the creek springs from a hundred little shaded clefts they ascended a rocky peak expecting to find a few of the party.. Who did they find? Nobody, that's who. Wrong mountain.

But if the mountain was wrong the view was right. So while they sat sharing scenery, solitude, safety pins, and lip ice (from the tube) they heard sounds of jovialty coming from the peak to the West and there sat good leader Bruce, who had ascended the right way, with Jackie who's small but oh my. Then Jerry made the summit. Later came Ruta (new member) and Mike. If the other cats made the summit it must have been on another mountain.

Altogether, had they ever got together, were Bruce Christenson, Mike Gaschler, Fred & Hannalouise Janke, Ruta Dreijmanis, Jackie Thomas, Sara Weller, Gerry Powelson, Alexis & Carla & Eric Kelner, and Sam Allan.

Coyote Creek in Escalante -by Carol Wiens





by Betty Ure

Look out you river rats - the younger generation is about to take over! Give them another few years and you've got some enthusiastic trip leaders! Judging from comments made by the younger members of the expedition, the trip on the Yampa-Green Rivers was a huge success!

After a somewhat sleepless bus ride to Harpers' Corner on Friday night, a few hours of restless sleep, and a quick breakfast, eleven adults and 19 children set out for the 13 mile trek down into Echo Park. This dusty road viewed from the back of a Hertz truck crowded with rafts, gear and assorted sizes of humanity was quite an experience! After our arrival the novices were initiated into the fine art of pumping up rafts; the younger members proving to be very able helpers.

The boats were launched and we soon had a delightful lunch stop and siesta for the parents. Then came the first exciting rapids, and since the river was high, the rapids proved to be all and more than even the experienced crew anticipated. But

the only real near mishap came when the boat captained by Jack Petajan became stuck on a log as they attempted to get around a very large rock. Water poured over the back of the raft and they became half submerged shouted, "We are sinking!" as he paddled hard to bring the stern into the mainstream. The unsinkable raft finally settled out and the day was saved. Having overcome such an obstacle, the self confidence of the crew was greatly enhanced.

The rafts were beached late in the afternoon at the Jones' River Campground. The cool water of the Jones River provided excellent swimming and fishing for the younger members, and was marred only by large numbers of expedition parties who also found this a favorite spot. Although each family cooked somewhat independently, there was lots of time to talk and sing together.

It was decided that there was ample time Sunday morning for a hike up the canyon by the more hardy members to see the Indian petroglyphs. Those who stayed behind decided to investigate the hissing sound coming out of the Byrne's raft and discovered

a large leak. No wonder it was half submerged Saturday! No time to patch it up now, so pumpers were added to the crew. The calm waters found swimmers in the water and racing and water battles ensued until our landing at Rainbow Park. A leisurely unpacking, dinner and return bus trip with exhausted kids rounded off a perfect weekend. The conclusion seemed to be that we need more family river trips!

But the best way to describe the trip is to read what the families themselves had to say about it:

Trip Captain Noel deNevers, Clancy and family:

Renee-(10)When is the next trip? The rapids were a lot more than kids' rapids though. At the end someone said it is time to push in the leader and Jim Ure jumped on Dad and both fell in. It was beautiful!

Nanette-(11)My father said there would not be mosquitoes but there were many and they were hungry!

Clark-(13)The rapids were better than I thought they would be!

Jerry and Joan Byrne and family:
Our first river trip was especially exciting due to the combined inexperience of our family and the strange hissing sound coming from our raft!

Beth-(12)When we first started out I was scared, but after we were on the water it was fun.

Maura-(11)The part I liked best was the rapids because we went so fast.

Noreen-(9)The mosquitoes were bad!

Daniel-(10)I liked the rapids very much.

Carma Norberg and sons:

I feel the boys enjoyed the river and its beauty. These family trips are beneficial for the children so they can understand and appreciate nature and enjoy it with other people with similar interest.

Jack and Ruth Petajan and family:

All of the family's expectations were fulfilled including several wild rides on rapids! It was very enjoyable. Ann-(16)Our near spill was especially exciting!

Eric-(14)The second day was more exciting than the first!

Amy-(11)Fun, exciting, scary!

Bill and Joan Coles and family:

a great first trip for the kids!

Peter-(8)

Katie-(10)The scenery was sensational with all the rocks and the fantastic shapes as a result of centuries in wind and water. It was all very exciting with the rough water, rapids and sudden calm.

Jeff-(12)The splashing from the rapids was great!

Roland and Betty Ure and family:

Laurie-(10)The worst thing that happened was the ride to the river on the back of a truck. Everything got very dusty! My first impression is that it is great fun, interesting, and enjoyable. When is the next river run?

Barbie-(11) Exciting but a little bit too much so when the boat I was in got caught on a rock and our captain yelled "We are sinking!"

Jim-(14)There sure were a lot of good rapids, and I was glad to have the lone pleasure of throwing in the trip leader, Mr. deNevers.



AMERICAN FORK TWINS

by Ivan Cendese

Fearless leader Gerhard Henschel, novice Dorothy Tanner, professionals, Fred & Evelyn Bruenger and semi-pro's Bob Cook, Bob Howard, Frank Atwood and yours truly met early Saturday morning, set our goal, and conquered American Fork Twins. The valley temperature was close to 100°, but it was cool, clear and comfortable lunching on top of American Fork Twins. The sun shone brightly and the beautiful day increased the enjoyment provided by an affiable group. Our enthusiastic party enjoyed the many pleasures of a well planned hike: the scary adventure of the trip along the saddle; good conversation; a cool refreshing drink at the top, some frolicking and rollicking in the snow on the way down.

It was certainly the coolest way to spend July 4th weekend for those of us who made the trip.



by Tobie Hayes

You've never seen such a full, bright moon in your entire life as glistened that delightful night of June 9th. The eight of us, directed by our leader Dick Bell hiked to Silver Lake. We wanted to proceed further on up to the ridge in order to get a more spectacular view. Well, due to some unprepared girl in tennis shoes, tripping rather pathetically through the snow, it didn't quite happen. Nevertheless it was a beautiful view, attended by the famous voice of Gerry Powelson, quick wit of Oscar and Phyllis Robison, the monastery bread of Don Carlton, antics of Danny Thomas, greenness of Tobie and Dick Hayes and lastly but most importantly the skill and pleasantness of Dick Bell.



by Harold Goodro

On June 14th, some of the club's more violent hikers started a trend of advanced hikes that was to continue for four succeeding Sundays in a row. On this day our group followed Caine Alder on his 81st ascent of Twin Peaks. The early starters consisted of Caine, Oscar Robinson, Ted Thaxton, Harold Goodro, John Thirbill, John Sutton, Don Webb, Dale Green, Karen Carlston and Kent Carlston. Snow was encountered

at a lower elevation than usual, which helped somewhat in the lower basin, but soon became soft and deep, with one foot of new snow from several nights before. The trail breakers had rough going and were plunging to knee depth by the time the ridge was reached. At this point a bitter wind struck and all were obliged to put on all spare clothing and gloves. On the summit the group was joined by Ron Webber and Paul Horton, who had climbed Stair's Gulch in remarkable time. Back once

more on the summit ridge we encountered Alexis Kelner, Dennis Caldwell, Karen Dahlgren, Andy & Diane Schoenberg who had carried skis to the ridge for an easier way down. Except for the deep snow, it had been a delightful day with good weather and delightful comradeship with strong, steady hikers.

The following Sunday it was my turn to lead the "Beat Out" hike from White Pine to Bell's Canyon. This time the hardy group consisted of Jackie Thomas, Karen Carlston, Rob Thompson, Milt Hollander, Charlie Swift, Paul Horton, John Riley, Jean Lipley, and myself. Unbeknown to us till later, Larry Swanson was trying to catch us all day. After a leisurely snack stop on the Pfeifferhorn at 9:30 a.m., we took our time along the ridge to Thunder Mountain, enjoying the scenery and the cool breezes. The snow, where encountered, was much easier to walk on than the previous hike. Glissading into Bell's Canyon was hilarious, with each person using his own technique, some of them highly original. The party got separated and while some of us waited at the reservoir, we were by-passed by the rest. We finally regrouped at the meadow, where we found Larry. We hiked out together, stopping to gaze in wonder at the usual placid waterfall, now turned into a small Niagara due to the fast melting of the snow. We arrived at the cars rather late (7 p.m.) after being on the go for 12 hours.

The following Sunday, Caine was to lead the club up Bell's Canyon and climb Lone Peak. Some of us however, after our experience with Bell's Canyon the week before, decided to climb Lone from Corner Canyon. At 6 a.m. that morning, I expected six hikers to join me in Draper. The hikers kept arriving till there were sixteen! This rugged group of characters consisted of Jackie Thomas, Karen Carlston, Marty Snyder, Ruta Dnaejmaenis, Sara Weller, Bob & Louisa Mathias (Iowa Mountaineers),

Don Brikholz, Fred Platt, Sam Allan, Oscar Robison, Steve Swanson, Larry Swanson, John Riley and Paul Horton. Then, wonder of wonders, there were 3 four-wheel-drive vehicles to help us on our way. The star of the show, however, was Larry's jeep that carried two loads of eight hikers that extra couple of miles up an impassable road right to the trail start. Our next surprise was the little red and orange ribbons someone had marked the way up the mountain with. What a noble act! The air remained cool and the hikers moved fast and soon we were in the cirque. The group split in two, with Paul leading some up Pete's Stepladder, and myself leading the remainder up the West Ridge to the summit. The third surprise came on the summit, when Larry pulled a large watermelon from his pack! It was shared with relish by the entire group. (Between his jeep and the watermelon, Larry made many points that day.) On the North side of the mountain someone spied Caine leading his group consisting of Cliff Allsop, Milt Hollander, and Dave Smith. On the way down, glissading became all-important, and every foot of snowfield was utilized. During the ridge back in the jeep, we noticed huge patches of Sego Lilies in among the oak brush, a pleasant sight indeed.

The final Sunday, July 5th, a smaller group, consisting of Karen Carlston, Kent Carlston, Caine Alder Bob & Louisa Mathias, and myself, left our cars in Albion Basin at 7 a.m., hiked past Secret Lake, over Bald Mountain, Hidden Peak, American Fork Twins, Red Peak and Haystack to White Pine Canyon and on down to Little Cottonwood road. In spite of several lunch breaks, we arrived back at the cars at 2:30, truly time well spent. As I look back on these four hikes I can't help but realize that although the scenery and the weather play a big part in the enjoyment of a hike, it is really members that band together with a spirit of friendship and team effort that make the occasion memorable.

JULY

4th



by Max Townsend

Our Teton trip was most successful. By Friday evening seventeen strong and healthy climbers had reached the platforms in Garnet Canyon. (Perhaps Mac Hooton wasn't so healthy; he had developed some army sized blisters on the way up, courtesy of his brand new climbing boots.) The platform area was already inhabited by other climbers as well as marmots, but we all managed to squeeze in.

Saturday our party split into four groups. The A-Team consisting of Dail and Scott Ogden and Court Richards and Susie Bauter ascended the East ridge of Nez Perce (II,F-5), while the B-Team Max Townsend, Jackie Thomas, Jim Dalgleish, John Langfeldt, Oscar Robison, John Riley, and Dick Zeamer made the summit by the Northwest Couloir (II,F-3). The C-Team Barbara Brown, Ann McDonald, Noreen Ogden, and Karen Ogden reconnoitered the Surprise Lake Waterfall Couloir in Garnet Canyon before hiking to the Lake via the trail (5 miles, 15 switchbacks). Mac Hooton and Geoffrey Zeamer remained behind to guard the camp and to salve their wounds.

The A and B teams reached the summit of Nez Perce (11,900) at the same time, after climbing about 8 hours. The descent down the N.W. Couloir was uneventful except for Dick Zeamer leaving part of the seat of his trousers there while doing a wild glissade.

The entire party left the platforms Sunday morning and had time to enjoy the park and the cool atmosphere of the Jackson Saloons before heading home.

Other Salt Lake climbers were in the Tetons during the weekend. Joel Brown and Dave George climbed the Black Ice Couloir on the Grand (IV,F-6). They were supported by Ann George and Russ George. Pete Gibbs, George Gerhardt, Dave Raymond, Paul Horton and Guy Toombes climbed the East ridge of the Grand (III,F-6). Dave Boyd established base camp at Amphitheater Lake preparatory to climbing Mount Owen by the Koven Couloir (II,F-4).



NORTH HOWSER PEAK 11,150'

Bugaboo Group
Southern Percells, British Columbia
July 10, 1970

by T. Q. Stevenson

(1st of 3 articles on the recent Bugaboo climbing trip. Others will follow)

Early (3 a.m. EST-Bugaboo Standard Time) D. Smith, D. Allen and the writer aroused and began preparation for this enjoyable climb. The peak is the high point of the impressively Alpine Howser Spires and the entire Bugaboo Group. It has a steep West exposure which falls some 4,000 to 5,000 feet down to Howser River. The Eastern flank juts up dramatically from the névé of the Vowell Glacier; steep rock and fluted snow and ice walls tower above gaping bergschrunds and crevasses.

The pace is slow while resisting muscles are willed into terrain covering activity. Then slowly the body becomes tuned to the goals of the mind; breathing becomes less a conscious effort and the pure alpine beauty can be detected and appreciated. The steps sculptured in the snow become visible with the faint brightening in the northeast. Up over Bugaboo Pass my how the snow around the schrund has melted, a short pause and on down the Vowell Glacier skirting and threading through the crevasses.

Alpenglow on the shoulder of the north ridge of the Howser Spires and over on the Conrad Group Peaks - quick, a photo before it fades. How tranquil our mountain looks. Will it accept our short visit to its cathedral?

A long slog around a corner and up the snows to the precipitous west side. Will the bergschrund bridge hold now - and when we come down? Time for a rest; it has been over 3 hours since breakfast. The rock beckons and we begin scrambling. Loose rock - be careful for the man below. After a short iced chimney the steepness forces roped scrambling with some belays.

Ah, finally off of that steep rubble pile. Not safe - it will be more dangerous to descend. Maybe we should descend off the east face.

The ridge run begins, where is the junction of the east and north ridges, where is the summit? Up on the first pitch of the run - wow - the east face is very steep. Fun climbing, short pitches, is that the traverse on a small ledge to the left? Yes, the key has been turned; only a short trundle to the summit. Avalanches slush off of the east face no descent that way.

More climbing - the mountain will not give up easily - but at last we arrive at the cathedral. It is a relief, it is a culmination of a

5 year old desire, it is majestic. Clouds and thunder west and south - will Gomo be kind to us?

And now the descent. Some rappels and some down - climbing and some scrambling. Just a few more feet to the snow. What was that? A rock! Big, flat and rolling fast from 500 feet above. It flashes on to the ice patch coming our way. ROCK!! ROCK - ROCK - No time to get out of its way duck - find some protection some place some how - now! It picks up speed off, the 40 degree ice slope, bounces and smashes angrily at the slope just above us. The low moaning whirl of the flying rock brands your mind. Will it miss me. It does. And it misses the others and the rope. We are lucky, very lucky. Quick lets get off of this rubble before more comes down.

It takes as long to reach the bergschrund as on the ascent; without doubt it is going to be a long day but Gomo has been kind - no rain. A short break and off we go. Make sure prussic slings are fixed. The snow has melted more; there is more exposed ice; must cut a few steps - 5-10-15.

The return is long, it is late and the sun sets. Will our snow bridges hold for the return - they do! Up to Bugaboo Pass. We share the last of Tang which was covetously saved for a possible bivouac. Better keep the rope on until we are off the snow. It is crevasse opening season; we are tired; it is dark. Almost down; just a little more snow - wish we dared to glissade. Woops! Punched a leg into a crevasse! Just a leg - no problem better move more to the right to skirt any more cracks. I am tired, be careful.

We are off the snow. Now if we can just find the trail down the moraine all will be well. Down, down, slip and slide, over the stream, ground the large boulder and back to our sanctuary. Nearly a 24 hour day. Food let-down and relax, sleep.

LAKE SOLITUDE Hike

by John Riley

The Lake Solitude hike got underway with 6 participants at about 8:20 a.m., 2 more joined the party later. The weather was clear and mild. The snow was deep but hard enough to support people except near trees where there were many breakthroughs. There was snow all the way except for a small dry spot on the road near the lower end of the lake.

The route was notable for the fact that the trail was followed only by chance. On the way back the beginning of the trail was actually located. However, the route taken was pleasant and the objective was achieved.

Many snowshoe rabbits were seen in various stages of color change. Some were white with gray feet and others were mostly gray with some white spots. The ground squirrels were in evidence scurrying to their snow covered burrows as we approached.

Hikers were: Sheldon & Beverly Hyde, June Zongker, Marion Vogel, Ann Wennhold, Cal Giddings, Terry Wojcik and John Riley.



by Carl and Helen Chindgren

Even the drizzling rain didn't dampen our spirits as we lashed the supplies yea high to Pete's toboggan and trudged on up over the snow to the lodge.

In short order, the furnace and the old faithful kitchen range were warming the cold timbers. After three hours of hard labor, the lodge was presentable for members and guests who

JULY 4TH SUGARLOAF

by Estelle TaFoya

Thirty-five participants met in Albion Basin for a cool July 4th ascent of Sugarloaf. It was a great way to spend the Holiday near home and yet "away from it all". After gingerly testing the icy water of Secret Lake and deciding not to swim after-all the group proceeded up through the snowfields under the terminus of Sugar Loaf Lift. Then on up to the summit of Sugar Loaf and back to the mountain hut in the ridge between Sugar Loaf and Baldy for lunch. Marty Smith amazed everyone by pulling from his pack two watermelons! And they were delicious. Lunch was followed by glissading the snowfields. Sheila Whitney showed everyone up with her speed of descent. Hikers were: Dixon Smith, Marty Smith, Hugh, Janet, Sheryl, Scott and David Gillilan, Carol Greenlee, Benita Jackson, Fred Myers, George, Carol, Arthur and Paul Edison, Spence, Sheila, Heidi and David Whitney, Boyd, Kathy, Karen and Julie Fjeldsted, Grace and Patty Ormsby, Carl and Sheila Dunn, Marian Nelson, Chauna Eikrem, John Maw, Gwen Long, Cal and Steve Giddings, Margaret and Gina Strickland, Estelle Ta Foya.



began arriving about 6 p.m..

And such a banquet this was! These "old time" and "new time" Mountain Club Gals can surely whip up some elegant dishes. Many bemoaned the fact that they had eaten too much and that's proof of the pudding.

We were thoroughly delighted with Betty Botcher's slides and narration of her African trip a year ago. And Stan Murdock's movies and narration of

Club activities when he was President. Imagine improvising a cement mixer out of a metal drum and turning it by hand ---many hands!

The planned potluck parties are great but many hands are required to make one a success. To all those hands which helped us, we give thanks. A special thanks to Ruth, Laird and Davey Crocker who helped haul coal and supplies to the lodge on Thursday evening. To Pete and Margo for the toboggan to haul these items and in helping with the remaining two sacks of coal. To Elfriede and Wolf Snyder who came

a couple of hours early to help make the lodge presentable. To Betty and Stan for the entertainment. To the Murdocks's for their much appreciated help with the Sunday clean up. And these members who attended and contributed food: Betty Bottcher, Carl Bauer, Milt & Louise Hollander, Pete & Margo Hovingh, Robert, Jane & Rok James, Barbara Lovejoy (for the food), Steve & Norma MacDonald, Elfriede & Wolf Snyder, Bob Mealiff, Estelle TaFoya, Fern Reid, Stan & Avon Murdock, Janet & Delbert Yergensen, Carol & Del Weins, Wilma McElhaney, Chauncy & Emily Hall, Cal Giddings, Carl & Helen Chindgren.

THE LODGE

by Phil Berger

We have been making rapid progress with the lodge. My committee is really a dedicated group of hard workers. When you get up to the lodge (for the August 30th WORK PARTY, of course) you will be amazed at the new paneling in the ladies dorm, painted beds in both dorms, new blinds and you have to see that 'kitchen counter'. Seems like whenever the lodge is used for a weekend lately, these great people take "puttering tools" along and repair all the little things. It is

good to see the lodge getting such membership use, the popularity is even spilling over to the week days.

Tuesday evening (July 14th) there was a small gathering of WMC members to say a temporary good-by to Estelle TaFoya. Estelle is leaving to make her home in Arizona. I say 'temporary' because she is bound to return for ski season. We want to thank you Estelle for planning and making a success of the lodge activities.

See you at the August work party!

LADIES' HIKE

Nine ladies met Friday, June 19th to trod the trail in Mill Creek Canyon. Liz Choules led the way up to the Ridge above the Terraces. The evening was pleasantly warm, and many spring flowers were enjoyed along the way. A few of the ladies remembered snowshoeing this same area in the winter. Liz, Kathy, and Rebecca, if I remember correctly. The steep slope must be quite challenging in the winter snow.

We all happily enjoyed opportunities to converse, but achieved solemn quiet now and then in hopes of catching a deer on the trail. A little before the trail begins it's descent to Elbow Fork, Liz had blazed the trail down the other side to join the one going to Mt. Raymond. It seemed very wild and remote

in this quiet stretch of woods - nice to be off the beaten track.

Having gained the trail back to the Terraces in the bottom of the canyon, Tanya, Else and Ute elected to return to their car, with Liz to guide them, while Kathy took the lead for the rest of the group. We hiked a short way further, sat down to have a late dinner just as the last sunlight gilded the trail, and then we, too, headed back to the cars. It was a delightful evening spent with delightful ladies.

Leader: Liz Choules, members and guests: Kathy Fjeldsted, Grace & Patty Ormsby, Margo Hovingh, Rebecca Price, Tanya Kar, Ilse Wightman and Ute Winkler.

NEWS AND NOTICES

HELP, IDEAS NEEDED

Your social committee, Margaret Strickland (chairman), Lillian Leining, Ron & Dagny Healey, are requesting help from our membership for the upcoming fall social events - Western Party, etc.. If you want to participate, bring innovative ideas, be a part of the fun - call: Margaret 359-3176, Lillian 364-8982, Ron & Dagny 359-4211.

FOR SALE

Down sleeping bag \$40 weighs 4½ lb.
Klancy deNevers 363-1307

THANKS

..to Linda Rathbun, her parents and in-laws for mailing out July Ramblers and membership cards.

..Kay Berger for typing the August Rambler, and to Jane Daurelle for

typing the membership list.

..to EVERYONE who helped to make Know Your Wasatch Week such a big success.

DEADLINE

For the September Rambler is August 15th have your stuff at Sally Nelson's by then. 1218 Harvard Ave., SLC, Utah 84105
PLEASE TYPE.

HATCHED

Stefan Charles Wawersik on July 11th by Wolfgang & Carol

HITCHED

..Dave and Ann George - - - June

UPCOMING

..September 16th: Annual WMC Oldtimers' Get-together at Ray Watrous's Bowery.
Hosts: Jim and Elfriede Shane.

Timberline

Sports Inc.

SPECIALISTS IN LIGHT WEIGHT HIKING & CAMPING

fine packs — KELTY, MILLET

fine down gear — SIERRA DESIGNS

fine boots — LOWA, MEINDL, R R, R D

**TENTS CLIMBING
CUISINE STOVES**



Friendly service since 1961

M - 8 10 - 6 2959 Highland Dr

AUGUST

WMC

MEMBERSHIP

1970

LIST

Adams, Mary W.	237 4th Ave. SLC 84103	359-5361
Alder, Caine	1549 South 13th East SLC 84105	
Allan, Sam	2402 Federal Bldg. SLC 84112	486-6834
Allen, Dave	3848 South 2215 East SLC 84109	278-0230
*Anderson, Gufy	755 10th Ave. SLC 84103	363-8947
Anderson, Karl A.	2716 Hillbrook Dr. S.W. Roanoke, Va. 24018	
Anderson, Robert B.	73 "F" St. SLC 84103	328-5731
Angus, Don & Maxine	3619 South 3600 West SLC 84119	298-4978
Atkinson, Jackie	5897 Sagewood Dr. Murray, Ut. 84107	
Baggott, James	18 Ardmore Ave.; Lansdowne, Pa. 19050	
Baker, Bruce H.	233 East 2900 North; North Ogden, Ut. 84404	782-5077
Bakewell, Helene	2282 South 18th East SLC 84106	486-6304
Bander, A. A. (Helen)	291 East 2nd North Bountiful, Ut. 84010	295-3200
Barker, Ann & Clint	5 Laurel Lane; Barrington, R.I. 02806	
Barlund, Gordon H.	3625 Eastwood Dr. SLC 84109	272-0696
Barnhill, Robert E. (Sue)	2420 Stringham Ave. SLC 84109	486-8036
Barron, Barbara J.	266 4th Ave. #208 SLC 84103	363-2550
*Bauer, Carl E.	316 Third Ave. SLC 84103	355-6036
Baugh, Neomah	175 Canyon Rd. #6C SLC 84103	363-6180
Bean, Mr. & Mrs. Doug.	2322 Lynwood Dr. SLC 84109	466-8014
Beckford, James J.	1271 East 4th South SLC 84102	364-0209
Beier, Ernst G.	1600 Michigan Ave. SLC 84105	355-4450
Belangie, Michael C.	539 Leland Ave. SLC 84106	328-5211
Bell, Richard W.	13204 South 1700 West Riverton, Ut. 84065	254-4555
Berger, Phil (Kathleen)	1355 Butler Ave. SLC 84102	322-1873
*Bidgood, Viola	6705 North Temple City Blvd. Arcadia, Ca. 91006	
Bjorken, J.D. Mr. & Mrs.	31 Skyline Dr.; Woodside, Ca. 94062	851-0906
Bjorklund, Russell F.	470 South 13th East #507	359-2689
Black, Donald H.	7673 Caballero Dr.; Sandy, Ut. 84070	355-9028
Blair, Mary Ellen	4 St. Clair Rd.; Morristown, N.J. 07960	
Blew, Gary D.	1810 South Main #103 SLC 84115	
Bliss, Robert L. (Anna)	27 University St. SLC 84102	322-0831
Bloom, Charles N.	4602 West Berridge Lane; Glendale, Ariz. 85301	
Bloom, Sherman (Miriam)	1959 Longview Dr. SLC 84117	277-3079
Blycker, Lloyd (Janette)	935 Millcreek Way SLC 84106	484-0476
Bottcher, Dr. Betty	1158 East 27th South SLC 84106	484-6692
Boyd, Richard & Pat	4497 Roger Dr.; SLC 84117	278-5642
Boyd, Elmer W.	2882 West 3875 South SLC 84119	298-5537
Bresenham, Thomas	959 East 3rd South SLC 84102	359-6015
*Brown, Barbara J.	162 North 1320 West SLC 84116	355-9227
Browne, Anthony (Valerie)	375 Donner Way #709 SLC 84108	487-3527
Bruenger, Fred (Eveline)	2590 Yermo Ave. SLC 84109	485-2639
Bucher, Robert L.	13514 Perthshire; Houston, Tex. 77024	
Byrne, Clix	1147 36th St. Ogden, Ut. 84403	394-6382
Byrne, Gerry (Joan)	1159 First Ave SLC 84103	363-0149
Byrne, James M. (Dorothy)	188 4th Ave. SLC 84103	359-5631
Caldwell, Dennis J.	2501 Walker Lane SLC 84117	278-2100
Campbell, Gayle B.	1145 East 2nd South SLC 84102	363-7338

* Life member

** Honorary member

Campbell, Jack T.	c/o Alta Lodge; Alta Ut. 84070	
Carlston, Karen	3617 South 1200 East SLC 84106	484-1552
Carraher, Clair T.	354 East 1650 South; Bountiful, Ut. 84010	524-5725
Carter, Anne	2293 Walker Lane SLC 84117	277-0213
Cassaday, Marva J.	1971 Douglas St. SLC 84105	466-5097
Catmull, Ellen	620 Adams #22; Davis, Cal. 95616	
Cendese, Ivan	941 East 5th South SLC 84102	363-5611
Chaplin, Susan	227 South 9th East SLC 84102	
*Chindgren, Carl (Helen)	2404 East 33rd South	467-0922
Chisholm, David J.	6018 LaTour St. SLC 84121	278-2172
Choules, Lew (Liz)	1836 East 9th South SLC 84108	355-0383
Christenson, Bruce	2847 Sleepy Hollow Dr. SLC 84117	278-9308
*Christensen, Janet	1573 Hollywood Ave SLC 84105	487-3812
Christensen, Lucille	657 West 3500 South; Bountiful, Ut. 84010	295-4127
Clayton, Bill (Bette)	2875 East Pamela Dr. SLC 84121	277-0726
Clemmer, John H.	Box 447 Clearfield, Ut. 84015	393-4273
Codd, Jerry E.	21318 Payne Ave.; Torrence, Ca. 90502	
Cole, Barry C.	1321 East Sherman Ave. SLC 84105	467-8863
Coleman, Donald D.	2250 Fisher Lane SLC 84109	486-7796
Coles, Wm. J (Joan)	1306 Harrison Ave. SLC 84105	485-1268
Connor, Gary E. (Laura)	1070 East 3rd South Apt. 301 SLC 84102	328-9981
Cook, Brian (Jean)	401 N. McKinley; Champaign, Ill. 61820	
✓ Cook, David B. (Sharon)	833 4th Ave. SLC 84103	355-4086
✓ Cook, Edmund D.	1236 East 1st South SLC 84102	355-5522
Cook, Robert J. (Evelyn)	820 East Capitol Blvd. 84103	364-7084
Corbett, John D (Odalie)	1363 Butler Ave. SLC 84102	
Cornwall, M. Carter	703 9th Ave. SLC 84103	364-7286
Crist, Glenn F.	2206 Austin Hall, U of U. SLC 84112	322-8517
Crocker, Laird	555 East 6270 South Murray, Ut. 84107	262-1996
Crow, Doug	934 Best Ave. SLC 84106	485-3187
Culp, Carl A.	133 Virginia St. SLC 84103	355-4962
Cummings, Pat	2551 Hillsden Dr. SLC 84117	277-1512
Curtoys, C. J.	Green Giant Co.; Payton, Wash. 99328	
Dahlgren, Karin	233 Douglas St. SLC 84102	359-0416
Dahnken, Philip Rev.	1085 East 7th South SLC 84102	322-2611
Dalgleish, James	2081 South 9th East Bountiful, Ut. 84010	295-7788
Daurelle, Jane	5474 Indian Rock Rd. SLC 84117	278-5025
Davidson, Nancy	919 First Ave. SLC 84103	355-9341
Davis, Mel (Clare)	4647 Idlewild Rd. SLC 84117	278-3174
Davis, John B.	60 East 4th South Bountiful, Ut. 84010	295-2294
*Degles, Thomas	1953 East 4625 South SLC 84117	277-2338
Dehm, Henry C (Traute)	3003 East 4505 South SLC 84117	278-7362
Demint, Robert J.	2559 South Zephyr Court; Denver, Col. 80227	
deNevers, Noel (Clancy)	1416 Butler Ave.; SLC 84102	
Dewell, J. B.	104 North 800 West; Woods Cross, SLC 84107	
Dick, Gale	1377 Butler Ave.; SLC 84102	359-5764
Dickman, Sherman	1560 Indian Hills Dr. 84108	466-6910
Doidge, Mrs. Heide	1911 Michigan Ave.; SLC 84108	363-6250
Donner, Morton	2974 St. Mary's Circle SLC 84108	484-9175
Dreijmanis; Ruta	351 East Center #303 84601 Provo	373-1190
Earl, Kermit	4486 South 4280 West SLC 84120	299-0526
Eckels, Ellen Lea	5780 Idlewild Circle SLC 84117	277-6664
Eddins, Add M.	1401 South Gaylord Denver, Col. 80210	
Edison, Dr. Geo. (Carol)	1209 Gilmer Drive SLC 84105	359-0582
Edwards, Keith D.	1950 East 7800 South SLC 84121	255-3663
Edwards, Leon	4835 Highland Dr. SLC 84117	
Elkins, Douglas	1875 East 21st South SLC 84105	466-4713
Ellefson, Robert (Ellen)	2695 Melbourne SLC 84106	484-2876

• Evans, Barbara M.	2541 Wellington St. SLC 84106	484-7333
Everson, Robert	2613 Imperial St. SLC 84106	487-0029
Farrer, Mary Jo	1196 Lorraine Dr. SLC 84106	467-5987
Fast, Richard (Joye)	1303 West First Pl.; Mesa, Ariz. 85201	
Feltis, Anita R.	2931 Cook Ave.; Billings, Mon. 59102	
Filler, Aaron S.	623 Woodlawn St.; Fall River, Mass. 02720	
Fisher, Mary F.	4042 North Star #1 Anchorage, Alaska 99503	
Fisher, Lawrence T.	Box 4705 Las Cruces New Mex. 88001	
Fjeldsted, Boyd L.		
(Katherine)	1932 Browning Ave. SLC 84108	484-8136
Fletcher, Melvin H.	702 Park Ave. Park City, Ut. 84060	
Foran, Arthur	8529 Keokuk; Corroga Park; Ca. 91306	
Fox, Don (Donna)	1985 South 2100 East #9 SLC 84108	486-8287
Frey, Karl Heinz	2686 Alden St. SLC 84106	484-2912
Fritz, Joseph N.	800 Camino Encantado; Los Alamos, N. M. 87544	
Frohboese, Bob (Karil)	607 Park St.; #20; SLC 84102	355-7218
Gallagher, Michael P.	125 South 11th East SLC 84102	322-6654
Gamble, Barry I.	3645 Cascade Way SLC 84109	466-5391
Gardner, Joyce	964 Military Dr. SLC 84108	363-4210
Gaschler, Michael	363 East Gregson Ave. SLC 84115	467-1657
Gates, Connee	5050 East Hawthorne St.; Tucson, Ariz. 85711	
George, David B.	3530 Eastcliff Dr. SLC 84117	278-9083
Gerth, John T.	1931 East Lincoln Lane SLC 84117	278-7336
Gibbs, Peter (Miriam)	79 Laurel St. SLC 84103	359-9453
Giddings, Calvin	904 Military Drive SLC 84108	359-2588
Giddings, Jennifer	1010 South 900 East #2 SLC 84105	
Gillette, Clyde F.	3419 El Serrito Dr. SLC 84109	484-5804
Gillilan, Hugh	960 Le Grand SLC 84108	363-9284
Goodman, Nathaniel	6053 South 2300 East SLC 84121	277-0193
• Goodro, Harold J.	2350 East 4800 South SLC 84117	277-1247
Goodro, Jerry B.	2350 East 4800 South SLC 84117	277-1247
Goodwin, Alfred	4325 S.W. 34 Ave. Portland, Ore. 97201	
Goodwin, Robert J., Jr.	Box 311 Fairbanks, Alaska 99701	
Granieri, Susan	1064 East Second South SLC 84102	467-3156
Green, Craig L.	320 Fifth Ave. #6 SLC 84103	355-9079
Green, Dale J.	4230 Sovereign Way SLC 84117	277-6417
*Green, S. Dean	2515 Beverly St. SLC 84106	466-8896
Greenlee, Lorraine (Carol)	5493 Fair Oaks Dr. SLC 84117	278-3317
Greenspan, Rob't.	Box 195 Wilson, Wyoming 83014	
Gregor, Gary (Susan)	3440 S Fifth East #31; SLC 84106	467-6097
Hafterson, Jr. Harold (Gally)	709 Anna; Moscoe, Id. 83843	
Hagman, Dean	1953 Melody Dr.; Idaho Falls, Id. 83401	
Hall, Charles (Emily)	2652 East 6200 South SLC 84121	277-1555
Hall, Rufus H.	1716 Harvard Ave. SLC 84108	363-1838
Haltmeyer, Gary C.	2810 Palmer Dr.; Los Angeles, Ca. 90065	
Hankley, Wm. J.	3191 Majestic Dr. SLC 84117	277-6726
Hanks, George D.	638 Elkhart St.; Gary, Ind. 46403	
Hansen, Earl T.	4220 Mackay St.; SLC 84107	266-5752
Hardy, Nancy F.	205 Sixth Ave.; SLC 84103	359-5665
Harris, Frank (Anna Grace)	185 Virginia St.; SLC 84103	364-4867
Harris, John W. (Pat)	1783 Millbrook Rd. SLC 84106	487-0251
Harris, Mart (Frances)	7730 Dell Rd. SLC 84121	277-4439
Hart, Ernest (Suzanna)	Box 1116; Grants, N. M. 87020	
Harvey, Stewart (Eunice)	1337 Blaine Ave. SLC 84105	484-1345
Hathaway, Jim (Marilyn)	3690 Millcreek Rd. SLC 84109	278-6526
Havnes, Nancy	1212 4th Ave. SLC 84103	364-3306
Healey, Richard (Dagny)	1059 E Sixth S #36 SLC 84102	359-4211
Healy, Thomas (Susan)	1815 S 13th E SLC 84105	485-3231

Hearn, Anthony	Dept. of Physics; Univ. of Utah; SLC 84112	322-8502
Heath, Barbara K.	2220 East 4800 South #29 SLC 84117	277-1886
Hendel, C. W.	1211 S 19th E SLC 84108	484-4694
Heninger, Don B. (Janice)	329 W 800 N; Clearfield, Ut. 84015	825-1306
Henschel, Gerhard	224 5th Ave. SLC 84103	355-1667
Henson, Ruth C.	1151 Michigan Ave. SLC 84105	364-1022
Hess, Gloria	211 Lincoln Ave.; Highland Park; New Jersey 08823	
Higginbotham, Kenneth A.	12900 Winthrop Ave.; Granada Hills, Ca. 91344	
Higginbotham, Grover (Vivian)	12900 Winthrop Ave.; Granada Hills, Ca. 91344	
Hills, Richard	5615 S 2200 W; Roy, Ut. 84067	
Hindbo, Mrs. Arie	325 S 4th E #5 SLC 84111	359-7340
Holland, Ruth B.	180 W 1400 N; Bountiful, Ut. 84010	295-6746
Hollander, Milt (Louise)	2561 Valley View Ave. SLC 84117	277-1416
Holmer, Richard N.	4227 Cumorah Dr. SLC 84117	278-3753
Holmoe, Bud	2441 Teasley St.; La Crescenta, Ca. 94214	
Holmoe, Olaf (Mary Anne)	3815 S 980 E SLC 84106	266-0262
Horton, Gerald	2285 Blaine Ave. SLC 84108	486-0852
Horton, Paul	P. O. Box 8183 SLC 84101	363-8366
Hovingh, Peter (Margo)	124 S 12th E SLC 84102	395-4792
Howard, Robert L.	4317 S 3600 W SLC 84119	298-4374
Hughes, Bill	1909 Lincoln Lane SLC 84117	277-1288
Hughes, Karen W.	Box 826; Park City, Ut. 84060	
Hyde, Earl K. (Jean)	852 Arlington Ave.; Berkeley, Ca. 94707	
Hyde, Sheldon (Beverly)	1566 Sunnyside Ave. SLC 84105	363-9564
* Imber, Scotty	4385 S 2990 E SLC 84117	278-2430
Irvine, Robert W.	4080 Eccles Ave.; Ogden, Ut. 84403	
Isherwood, Bill	4304 - 55 Ave.; Bladensburg, Mo. 20710	
Iverson, Edythe B.	405 Grand Canyon Blvd; Grand Manor Apts. #22; Reno, Nev. 89502	
Jackson, Benita	63 E First N SLC 84103	322-0751
Jackson, John (Vivian)	4385 Holladay Blvd SLC 84117	278-8379
Jacobs, Hans K.	1382 Perry Ave SLC 84103	322-6395
Jagla, George F.	40 Birch St.; Mill Valley, Ca. 94941	388-1925
James, Allen H.	2869 Live Oak Circle SLC 84117	277-4908
James, Kevin	1871 Condie Dr.; Granger, Ut. 84119	298-8213
James, Jayne	1871 Condie Dr. Granger, Ut. 84119	298-8213
James, Robert C.	1871 Condie Dr. Granger, Ut. 84119	299-3966
Janis, Burton	5931 Carnegie St.; San Diego, Ca. 92122	
Janke, Mannelore	1133 Bryan Ave. SLC 84105	467-0571
Jenness, Helen A.	Parkview Apt. T30 200 Swanton St.; Winchester, Mass. 01890	
Johnson, Keith	1951 Wilson Ave. SLC 84108	467-6880
Jones, Diana Lee	4131 W 5010 S Kearns, Ut. 84118	
Jones, Miriam	2220 E 4800 S #184 SLC 84117	278-7664
Kar, Tania	1210 4th Ave. SLC 84103	487-3458
Katten, Ernest F.	1271 E 3770 S SLC 84106	262-0719
* Kaufman, Nat (Yenta)	521 Fifth Ave. SLC 84103	363-5914
* Keir, Roy A. (Marilyn)	1155 E Fifth S #11 SLC 84102	364-7527
Keller, Charles L.	2814 Kentucky Ave. SLC 84117	278-2578
Kellett, Kathy	29 E. Claybourne SLC 84115	485-9837
Kessler, F. Michael	4705 Van Noord Ave.; Sherman Oaks, Ca. 91403	981-3459
* Kueffel, Jack	5342 Cottonwood Lane SLC 84117	277-5733
King, Michael	51 Lester Ave. #1; San Jose, Ca. 95125	
King, Milton D.	202 West Belmont; Phoenix, Ariz. 85021	944-9848
King, Patrick	2580 Yermo Ave. SLC 84109	486-9705
Kittell, Carrie	356 University St. SLC 84103	359-1324
** Koziol, F. C.	2161 Penman Lane; Bountiful, Ut. 84010	295-1476
Kashin, Maurice	2011 Sheridan Rd. SLC 84108	484-7009
Kremer, Lawrence (Margi)	1383 E South Temple SLC 84102	359-4902
Kucera, Eugene	121 4th St. N.E.; Washington, D. C. 20002	

Kuehl, Leroy	1934 Michigan Ave. SLC 84108	363-6890
Kunze, Diana Lee	171 S 13th E. SLC 84102	328-9494
Kunze, Jay F. (Ruth)	1738 Ramona Ave. SLC 84108	467-1391
Landgraf, Jud	613 Lloyd; Royal Oaks, Mich. 48073	
Langfeldt, John A. (Grace)	425 E Center; Bountiful, Ut. 84010	292-1382
Laughlin, Jack L.	613½ Sage Ave.; P.O. Box 509; Kemmerer, Wyo. 83101	
Lawlor, Wm. K. Capt. (Vi)	4373 Sequoyah; Oakland, Ca.	
LeBlanc, Norman F. (Anne)	9 Don egan Rd.; R.D.5; Westchester, Pa. 19380	
*Lee, James B.	5340 Cottonwood Lane SLC 84117	364-4415
LeFebvre, Vernon	612 Nicholas Ave. W. S.; Socorro, N. M. 87801	
Leining, Richard (Lillian)	23 South Eighth East SLC 84102	364-8982
Leonard, Craig	Box 2303; Idaho Falls; Id. 83401	
Lepley, Jean	1122 Gilmer Dr. SLC 84105	
Lesley, Charles	455½ 7th Ave. SLC 84103	355-5779
Lewis, Lyman	4205 Neptune Dr. SLC 84117	277-6816
Lovejoy, Dan (Barbara)	6659 Greenfield Way SLC 84121	278-1002
Lund, Herbert Z.	Box 13227; Greensboro, N.C. 27405	
Lytle, Ivan (Iris)	1903 Herbert Ave. SLC 84108	359-0246
MacKenzie, Michael V.Jr.	625 Glenlock Way; Redwood City, Ca. 94062	
*MacDonald, Stephen L.	3600 Millcreek Rd. SLC 84109	277-0426
McCarty, Kenneth P. (Anne)	1136 E 2700 S Apt. 142 SLC 84106	466-3297
McCullough, James E.	1333 Brookshire, Dr. SLC 84106	466-4061
McDonald, Ann C.	5344 Cottonwood Lane SLC 84117	277-0816
McDonald, Charles C.	4195 Parkview Dr. SLC 84117	
MacDuff, John S.	3119 S 2800 E SLC 84109	484-1634
McElhaney, Wilma W.	Box 21096 SLC 84121	
McElroy, James	917 Bath St.; Ann Arbor, Mich. 48103	
*McGhan, Wenonah	655 Downingtown Ave. SLC 84105	484-1915
McLellan, Jack E.	2459 E 6600 S SLC 84121	277-7214
McMahan, Loyd D.	1386 Spring Lane Apt. B SLC 84117	278-3519
McNamara John F. (Pat)	1547 Delaware Lane SLC 84117	278-4852
Madden, Angus B.	3057 S 300 W; Bountiful, Ut. 84010	295-1787
Malm, Margaret	1716 Maple St.; Santa Monica, Ca. 90405	
Mandel, Kay	125 S 11th E SLC 84102	322-0390
Mansfield, Lois	400 N. River Rd. #1610; West Lafayette, Ind. 47906	
Mansker, David (Janet)	5697 Venado Court; San Jose, Ca. 95123	
Marden, Donald (Doti)	1598 Lakewood Dr. SLC 84117	278-1974
Masson, Lew	1967 Melody Dr.; Idaho Falls, Id. 83401	
Mathews, Alvin C.	570 N First W SLC 84103	363-2378
Matsuura, Stephen (Sandra)	Box 2113; Yuma Proving Grounds; Yuma, Ariz. 85364	
Maurice, James	430 S 12th E #6 SLC 84102	363-3017
Mays, Charles	Dept. of Radiobiology; Univ. of Utah 84102	
Mealiff, Robert W.	6710 S. Village Rd. SLC 84121	278-4227
Melling, George (Nancy)	2206 Redondo Ave. SLC 84108	485-1327
Michl, Josef (Sara)	2169 Sherman Ave. SLC 84108	322-8445
Mickelsen, Susan	1555 E 900 S SLC 84105	
*Mildon, John M. (Helen)	2649 Barbey Dr. SLC 84109	486-6256
Mooney, Rosemary	2037 S 2000 E SLC 84108	467-1832
Morey, Lewis W. (Lois)	2638 W 3935 S; Granger, Ut. 84119	298-7833
Mundorff, James C.	1265 E 6600 S SLC 84121	266-5258
Munger, Lawrence (Diana)	2406 E Cardinal Way SLC 84121	272-1366
Myers, Fred J.	Box 17144 SLC 84117	278-9104
*Murdock, Stanley A.	50 Whie Place SLC 84115	467-2212
Natoli, Cornelius (Marla)	2724 Hagen Rd.; La Cross, Wis. 54601	
*Nelson, Philip & (Sally)	1218 Harvard SLC 84105	485-0237
Nelson, Marian	4033 Parkview Dr. SLC 84117	277-9038
Nelson, Rob't. (Barbara)	4184 Parkview Dr. SLC 84117	278-4291

Nielsen, Anita R.	1122 Bueno Ave. SLC 84102	
Nielson, Mary B.	1787 Fieldcrest Lane SLC 84117	278-3537
Nielsen, Richard	2300 W 1700 S SLC 84104	487-7918
Norberg, Carma	2826 Pamela Dr. SLC 84121	277-7414
Novak, Phillip (Ruth)	3123 Lehman Ave.; Granger, Ut. 84119	299-5852
Noy, Jack (Annie)	3510 Fleetwood Dr. SLC 84109	277-1663
*Ogden, Dail (Noreen)	5347 Cottonwood Lane SLC 84117	277-4387
Ogden, Stewart	710 East 2nd S SLC 84102	359-2221
Ohlsen, Wm. D. (Ruth)	10 Vollmarstrasse; 8 Munchen 90; Germany	
Ohr, Marion G.	73 Elizabeth St. #4 SLC 84102	364-6784
Olsen, Chris E. (Ruth)	4417 S. Akron St.; Englewood, Colo. 80110	
Olsen, Craig AIC	463 FMS Box 922; APO San Francisco, Ca. 92274	
Ormsby, Grace	1319 W 10 N SLC 84116	364-4465
*Page, Meredith	12758 S 1700 W Riverton, Ut. 84065	254-3556
Parks, Richard	5052 Dell Rio SLC 84117	266-8188
*Parry, Clarence R.	1409 E 2100 S SLC 84105	466-4373
Parry, David	1833 E 21st S 84106 SLC	467-2167
Parsons, Mike (Ann)	1609 S 16th E SLC 84105	466-4778
Partridge, Ernest	35 S 7th E SLC 84102	322-0673
Patterson, Russell	3848 Christopherson Dr. SLC 84120	
Pearson, Ross	1941 Downington SLC 84108	
Peck, Gene (Gaye)	4605 Trinity Ave. SLC 84120	299-0618
Perschon, Albert F.	1254 E Iris Lane SLC 84106	262-0869
Petajan, Jack (Ruth)	3072 S 2900 E SLC 84109	486-0926
Peterson, Gerald A.	Shipyard Rd.; Middle Haddam, Conn. 06423	
Peterson, Normand L.	1606 Laird Ave. SLC 84105	466-6065
*Peterson, O'Dell	866 Pacific Ave. SLC 84104	355-7216
Pilar, Guillermo	1720 S 23rd E SLC 84108	486-8232
Pilgrim, Jean D.	1280 E 27th S SLC 84106	486-6594
Pistone, Joseph V.	3401 Lee Ann St. SLC 84119	355-4661
Pitter, Hal & Carla	1111 30th St #33; Boulder, Colo. 80302	
Ploch, Ramon	7722 Benaroya Dr S.W; Huntsville, Ala. 35802	
Plut, Frederick	595 P; Columbus St. SLC 84103	364-4072
*Powelson, Gerald	590 North 3rd E; American Fork, Ut. 84003	756-3004
Price, Rebecca	6895 Greenfield Way SLC 84121	
Pruess, Peter	1412 E 17th S SLC 84105	467-8284
Queneau, Paul (Jean)	695 "G" St. SLC 84103	363-8408
Quinn, Barry (Barbie)	1991 Creek Rd.; Sandy, Ut. 84070	255-6396
**Rampton, Governor Calvin		
Rathbun, George (Linda)	373 E 3360 S #6 SLC 84115	466-2662
Reed, Tom (Margaret)	1966 Wilson Ave. SLC 84108	485-9587
Reese, Max	1810 S Main #206 SLC 84115	484-5368
Reid, Bud (Fern)	1935 W 3140 S SLC 84119	298-7188
Richards, Oliver (Barb.)	3005 Plateau Dr. SLC 84109	484-8097
Riley, John E.	3639 Palisade Dr. SLC 84109	485-2567
Rogers, Bruce (Karen)	856 Hiiltop Rd. SLC 84103	328-0877
Rogers, Warren	1700 E. Siesta Dr.; Sandy, Ut. 84070	255-1966
*Robison, Oscar (Phyllis)	656 East Capitol St. SLC 84103	322-2310
Rosquist, Wm. (Veronica)	2555 Pasadena St. SLC 84109	485-5681
*Ross, Howard (Barbara)	5671 Oakdale Dr. SLC 84121	277-9537
Rowland, Stan (RoseMary)	3291 Fairfield R. SLC 84117	277-1757
Royer, Lawrence	508 E. Center; Logan, Ut. 84321	
Ryan, Philip (Marie Laurie)	154 "S" St. SLC Ut. 84103	355-1591
Saville, Richard S.	2514 E 13 S SLC 84108	466-8808
Sanford, Eve	249 S 7th E #re SLC 84102	359-4004
Schettler, Paul (Karen)	Dept. of Chemistry; Juniata College; Huntingdon, Pa. 16652	
Schneider, Edward (Sharon)	Fitzsimmons Hospital; Pathology Dept.; Denver, Col. 80240	
*Schoenberg, Andy (Diana)	3604 S 27th E SLC 84108	278-4896
Schwenk, Carl G.	Box 681; Rhineland, Wis. 54501	

Sears, Robt. N.	299 Long Hill Dr.; Short Hills, N. J.	07078	
Sedlar, Connie	717 S 13th E SLC	84102	364-1349
*Shane, James	4010 Eldorado SLC	84117	277-3085
Sheehan, Wm. A.	2880 S 15th E SLC	84109	484-7253
Smerage, Glen H.	145 N 550 E; Smithfield, Ut.	84335	563-5696
Smith, Cecil W. (Judith)	1207 Kensington Ave. SLC	84105	466-1721
Smith, Dave	25 W. Creek Dr.; Murray, Ut.	84107	266-5229
Smith, David L.	4051 S 1400 E SLC	84117	278-0348
Smith, Dixon (LaVerne)	Box 117 SLC	84110	
Smith, George H.	322 N 2100 W; SLC	84116	484-9873
Smith, James R.	546 Elizabeth S. SLC	84102	328-5901
Smith, Thor (Mary)	1050 North Point #601; San Francisco, Ca.	94109	
Smoot, Stephen	871 Monument Park Circle SLC	84108	355-7349
Snyder, Donald (Jean)	3055 Sequoia Ave. SLC	84109	485-9957
Snyder, Marty	1231 E 4620 S. SLC	84117	266-3493
Snyder, Wolf	4272 MacKay St. SLC	84107	266-1374
Spedden, H. Rush (Eliz)	4131 Comorath Dr. SLC	84117	278-2283
*Spencer, Orson D.	1422 Sunnyside Ave. SLC	84105	355-9022
Staples, John	181 N. Balsomina Way; Menlo Park, Ca.	94025	
Stenerson, Richard Owen	467 7th Ave. SLC	84103	359-5019
Stensaas, Larry (Suzanne)	2460 Lynwood Dr. SLC	84109	466-9050
*Stoerts, Lee	2813 S 2750 E SLC	84109	485-0073
Stephens, Doyle	3726 Redmaple Rd. SLC	84106	262-2734
Stevens, Walter (Elissa)	3470 S 3125 E SLC	84109	485-1147
Stevenson, Tom	2639 E 3080 S SLC	84109	486-8612
*Stoney, Claude A	1864 Hubbard Ave. SLC	84108	364-8828
Stout, Elizabeth T.	1572 Massachusetts Ave. #20; Cambridge, Mass.	02138	
Strickland, Margaret R.	1049 East Second South SLC	84102	359-3176
Strickland, Nick (Marie)	2151 E 9th S SLC	84108	364-1568
Stroud, Jim (Karen)	557 11th Ave. SLC	84103	359-5184
Sullivan, Peggy	1335 E 4130 S SLC	84117	
Sunderland, Steve	1138 Gilmer Dr. SLC	84105	355-7094
Sunderland, Jean	1138 Gilmer Drive SLC	84105	355-7094
Sundstrom, David D.	4131 N 45th Place #4; Phoenix, Ariz.	85018	
Sutherland, Ivan (Marcia)	69 University St. SLC	84102	521-6005
Sutton, John L.	692 Ogden Canyon; Ogden, Ut.	84401	
Swanson, George L.	1420 Logan Ave. SLC	84105	364-8857
Swanson, Larry	2756 Parleys Way SLC	84109	484-5808
Swanson, Steve	2887 Evergreen Ave. SLC	84109	484-5808
Swift, Charlie (Tricia)	4075 Powers Circle SLC	84117	277-2267
TaFoya, Estelle	2002 East Balboa; Tempe, Ariz.	84281	
Tanner, Allan B.	1100 Sixth St. S.W. #215; Washington, D.C.	20024	
Tanner, Dorothy Lee	355 4th Ave. SLC	84102	355-9287
Taylor, Gordon (+ Mrs.)	P. O. Box 1633; Manhattan Beach, Ca.	90266	
Temple, Bud	2781 Wilshire Dr. SLC	84109	466-0186
Thaxton, Ted R.	220 S 9th E; Kaysville, Ut.	84037	376-5463
Thomas, Daniel	3123 S 8th E SLC	84106	
Thomas, Elizabeth	275 Virginia St. SLC	84103	364-7039
*Thomas, Jackie	4985 1/2 Holladay Blvd. SLC	84117	278-0394
*Thomas, Samuel F.	118 E 60th St. N.Y., N.Y.	10022	
Thompson, Robert H.	2494 E 17th S SLC	84108	484-0110
Thornton, Calvin (Myrna)	136 E 7500 S; Midvale, Ut.	84047	255-4686
Titus, Edward C.	1062 S 5th E #1 SLC	84105	
Topik, Nick H.	Box 471; Brigham City, Ut.	84302	
Torreyson, Jean	1817 Downingtown SLC	84108	466-5579
Townsend, Max A.	221 "N" St. #D SLC	84103	363-2269
Treshow, Michael	1798 Millbrook Rd. SLC	84106	467-1022
*Trottier, Frank A.	1660 Garfield Ave. SLC	84105	466-7426

Turner, John R.	651 "A" E Capitol Blvd. SLC 84103	355-6003
Tyler, Max	3808 S 1915 E SLC 84106	277-3865
Ure, Roland (Betty)	3108 S 2800 E SLC 84109	487-6008
Valentine, D. (Kristin)	1384 Perry Ave. SLC 84105	364-1083
Van Norman, Rich. (Dolores)	3431 S 3650 E SLC 84109	278-3560
Velick, Sidney (Bernadette)	4183 Parkview Dr. SLC 84117	277-2110
Viavant, Wm. (June)	676 S 12th E SLC 84102	364-9684
Vogel, Marion	1400 Butler Ave. SLC 84102	363-9414
Wadell, Michael	2920 Second Ave. N.; Seattle, Wash. 98109	
Wagner, Howell C.	1779 Millcreek Way SLC 84106	466-6537
Wagner, John Jr.	1763 Laurelhurst Dr. SLC 84108	484-8916
Wahrhaftig, Austin (Ruby)	2239 Loqan Ave. SLC 84108	484-6471
Walker, W. Neff	745 E. Three Fountains Cir. #41 SLC 84107	266-9863
Wallace, John W.	3432 S 3685 E SLC 84117	278-2447
Wallentine, Keith (Kathy)	3627 Palisade Dr. SLC 84109	487-7226
Walters, Perry (Mary)	526 "C" St. SLC 84103	363-1418
Walton, Kingsley	798 Scott Ave. SLC 84106	466-2188
Wawersik, Wolfgang (Carol)	1439 Laird Ave. SLC 84105	355-2583
Webb, Donald L.	7146 S 2930 E SLC 84121	298-4556
Weber, Ronald H.	1163 Garfield Ave. SLC 84105	467-3187
Weller, Sarah	C/O James W. Hirst 2329 Fisher Lane SLC 84109	
Wendt, Gene I.	1220 W. Las Lomitas; Tucson, Ariz. 85704	887-6396
Wennhold, Phil (Ann)	2180 Belaire Dr. SLC 84108	
Whitney, Orson S (Sheila)	1845 Logan Ave. SLC 84108	486-0934
Wickham, Allan	1349 Yale Ave. SLC 84105	
Wiebe, Herman (Melva)	710 N 7th E; Logan, Ut. 84321	752-4668
Wiens, Del (Carol)	2969 Warr Rd. SLC 84109	487-2584
Wiens, George (Mary)	952 10th St. Manhattan Beach, Ca. 90266	
Wilkerson, James A.	Dept. of Path.; U of Nev. School of Medical Science Reno, Nev. 89507	
Willet, D. W.	3730 E. Millstream Dr. SLC 84109	277-7422
Wilson, Harry E.	2120 N. Callow Ave.; Bremerton, Wash. 98310	377-5045
Wilson, Mary Louise	1806 Bonita Ave. #C; Berkeley, Ca. 94709	
Wilson, Robert (Rochelle)	3939 Hale Dr. SLC 84117	359-5871
Winder, Richard W.	4400 W 4100 S SLC 84120	298-0384
Wistrom, Sandra M.	1898 E 33rd S #3 SLC 84106	487-2788
Wixom, James (Janice)	1321 E South Temple SLC 84102	359-3338
Wojcik, Theresa	949 E 8th S #12 SLC 84102	
*Wolfe, Jack	263 Elizabeth SLC 84103	364-4063
Woodruff, Dorde	6366 Cobblerock Lane SLC 84121	277-5526
Woody, Robert H.	2212 Vimont Ave. SLC 84109	466-5039
Worthen, Gerald W.	8859 S 1275 E Sandy, Ut. 84070	255-4098
Wright, Alden	256 Helm Ave. #2 SLC 84115	266-3481
Wright, Robert J. (Kathy)	187 N 1330 W SLC 84116	355-2453
Wright, Rob't. (Denna)	3033 E 5800 S SLC 84121	272-1177
*Yergensen, Janet	3151 S 2600 E SLC 84109	485-9887
Yourdon, F.R.	5619 Pheasant Way SLC 84121	278-0586
Zeamer, Richard J.	172 "K" St. SLC 84103	363-6635
Zeamer, Richard W.	Box 713 Moulton Union; Bowdoin College; Brunswick, Me. 04011	
Zeller, Karl	177 "H" St. SLC 84103	359-4148
Zenier, Susan M.	24 Virginia St. SLC 84103	364-0532
Zilonka, Sig George	6136 S 570 E. SLC 84107	262-1834
Zizumbo, R. Imelda	145 S 6th E #11 SLC 84102	322-4201
Zongker, June Elaine	3343 S 13th E #6 SLC 84106	

Zachariasen, Fred	Physics Dept.; Cal. Inst. of Tech.; Pasadena, Ca. 91109
Lark, Gordon (Cynthia)	Div. of Biology; Kansas St. U; Manhattan, Ka. 66502



Cover photo of Stevens Arch in Escalante by Carol Wiens

Wasatch Mountain Club business is conducted only on the first and third Wednesdays of each month. At that time, and only at that time, is the mail opened, new membership applications voted on, dues payments recorded, address changes made, lodge rentals approved, and all other business requiring board action conducted. All board members cannot attend all board meetings and although an effort is made to fill in during a member's absence, some business is held for action until the next meeting.

WASATCH MOUNTAIN CLUB
2959 Highland Drive, Salt Lake City, Utah 84106 Phone: 363-7150
APPLICATION FOR MEMBERSHIP

To the Board of Directors:

I hereby apply for membership in the Wasatch Mountain Club. I enclose the \$2.00 entrance fee and \$6.00 dues (spouse, \$3.00). Out of state membership dues are \$3.00 (spouse, \$1.50). The club event I have attended is _____ on _____ (date). I agree to abide by all the rules and regulations of the Club as specified in the constitution and by-laws and as determined by the Board of Directors.

Name (Printed) _____

Signature _____

(If spouse membership please include name of spouse (printed) _____

and signature _____

Address _____

City _____ State _____

Zip _____ Phone _____

Recommended by:

Member _____

Director: _____

(Effective 1 January through
31 August, 1970).

5
WASATCH MOUNTAIN CLUB, INC.
2959 Highland Drive
Salt Lake City, Utah 84106

BULK RATE
U. S. POSTAGE
3.8¢ PAID
SALT LAKE CITY, UTAH
PERMIT NO. 2001

ADDRESS CORRECTION REQUESTED
RETURN POSTAGE GUARANTEED

BOARD OF DIRECTORS

DEL WIENS, President	487-2584
JANE DAURELLE, Secretary	278-5025
CHARLEY SWIFT, Treasurer	277-2267
JIM BYRNE, Boating	359-5631
NICK STRICKLAND, Conservation	364-1568
MARGARET STRICKLAND, Entertainment	359-3176
FRED BRUENGER, Hiking	485-2639
PHIL BERGER, Lodge	322-1873
JACKIE THOMAS, Membership	278-0394
MAX TOWNSEND, Mountaineering	363-2269
SALLY NELSON, Publications	485-0237
DENNIS CALDWELL, Ski-Mountaineering	278-2100
BUD REID, Transportation	298-7188