



# The Rambler

*Official Publication of*  
THE WASATCH MOUNTAIN CLUB  
Salt Lake City, Utah

**MARCH 1970**

# CLUB ACTIVITIES FOR MARCH, 1960

**REGISTRATION INFORMATION:** Registration is not required for local, one-day outings unless otherwise mentioned. However, by registering with the leader you will be notified if the trip is cancelled. All outings generally leave the meeting place within 15 minutes of the scheduled meeting time. Register for bus-boat trips with the leader only by sending a deposit to the address listed. Leaders cannot register anyone without a deposit.

Registration with trip leaders for ski tours is even more important than for hiking. Through them you may glean information as to conditions of snow, or lack of it, or too much, and weather; and cancelling or proceeding with the trip for any of these reasons.

## NOTE ON SKI TOURING

Due to the hazardous conditions that have prevailed in the first half of the season people are well advised to check with the leaders on current conditions. Often tours will be cancelled or modified.

- Mar 1    TWIN PEAKS VIA BROADS FORK: Advanced (5,5)  
Sun.    In the hopes that conditions may have taken a turn for the better, we are prepared to tempt the gods in an all out assault on rugged Twin Peaks. The scenery is spectacular and the effort is vigorous. Register with the Leader: Caine Alder 487-0485 for current conditions and other information. Tentative departure time 6:30 a.m. from the mouth of Big Cottonwood Canyon. If conditions are hazardous, a very scenic and much shorter tour is still to be had by going to the lower part of Broads Fork Cirque.
- Mar 7    TIMPANOGAS LOOP ROAD: Beginner (2,1)  
Sun.    For a relatively modest effort a scenic reward is reaped on a traverse of the North side of Mt. Timpanogas. The terrain is easy with many fine alpine views. Meet at the Prudential parking lot, 33rd & State Sts., at 8:00 a.m., leader: Dick Leining, 364-8982

- Mar 8 AMERICAN FORK TWINS: Advanced (3,5)  
 Sun. In the hope that the stabilizing trend will continue we are scheduling this classic tour. Those who dread harassment from the Scourge of Sikorsky are advised to contact the leaders for possible car spotting arrangements in American Fork Canyon the night before. Meet at 8:00 a.m. at the Mouth of Little Cottonwood Canyon. Leaders: Chauncy & Emily Hall 277-1555.
- Mar 8 WINTER SOCIAL:  
 Sat. Our first March social will be at Estelle TaFoya's, 135 "R" Street. Phone 364-4126 for information, directions.
- Mar 14 ALTA-MIDWAY VIA SNAKE CREEK: Intermediate (2,2)  
 Sun. Here is a good chance to see some unusual views of the Alta-Brighton area. The route parallels the proposed tramway between Midway and Alta and gives an opportunity to visit some new touring country. Register by Thursday night for car spotting arrangements with Leader: Gerry Horton, 486-0852 Tentative departure at 8:00 a.m. from the mouth of Little Cottonwood Canyon.
- Mar 15 RED PINE-PFELIFFERHORN: Advanced (4,4)  
 Sun. This is one of the most exciting and strenuous tours in the Club's repertoire. For those in good condition the trip is quite rewarding. The descent route will be optional. Those interested in skiing down to Alpine should contact the leader: Pete Hovingh, 359-4791, Friday night to discuss car spotting meet at the mouth of Little Cottonwood Canyon at 7:30 a.m..
- Mar 19 KAYAK MEETING:  
 Thurs. Planning for kayaking well in advance of Spring runoff is necessary, particularly if you need to acquire equipment. Techniques, equipment, trips and practice sessions will be discussed. There will be a slide showing. Meet at Cal Gidding's home: 904 Military Drive (9th South 1730 East) at 3 p.m..
- Mar 20 GAD VALLEY BY MOONLIGHT: Inter-Adv. (3,3)  
 Fri. The ideal time to visit this beleaguered little valley in the peace and quiet of a (hopefully) moon-drenched evening. We will proceed from the bottom about two-thirds of the way up the canyon and retrace our steps back to the road. If it is not too late a sampling of the Alta night life might be in order. Leader, Dick Bell, 254-4555, meet at the mouth of Little

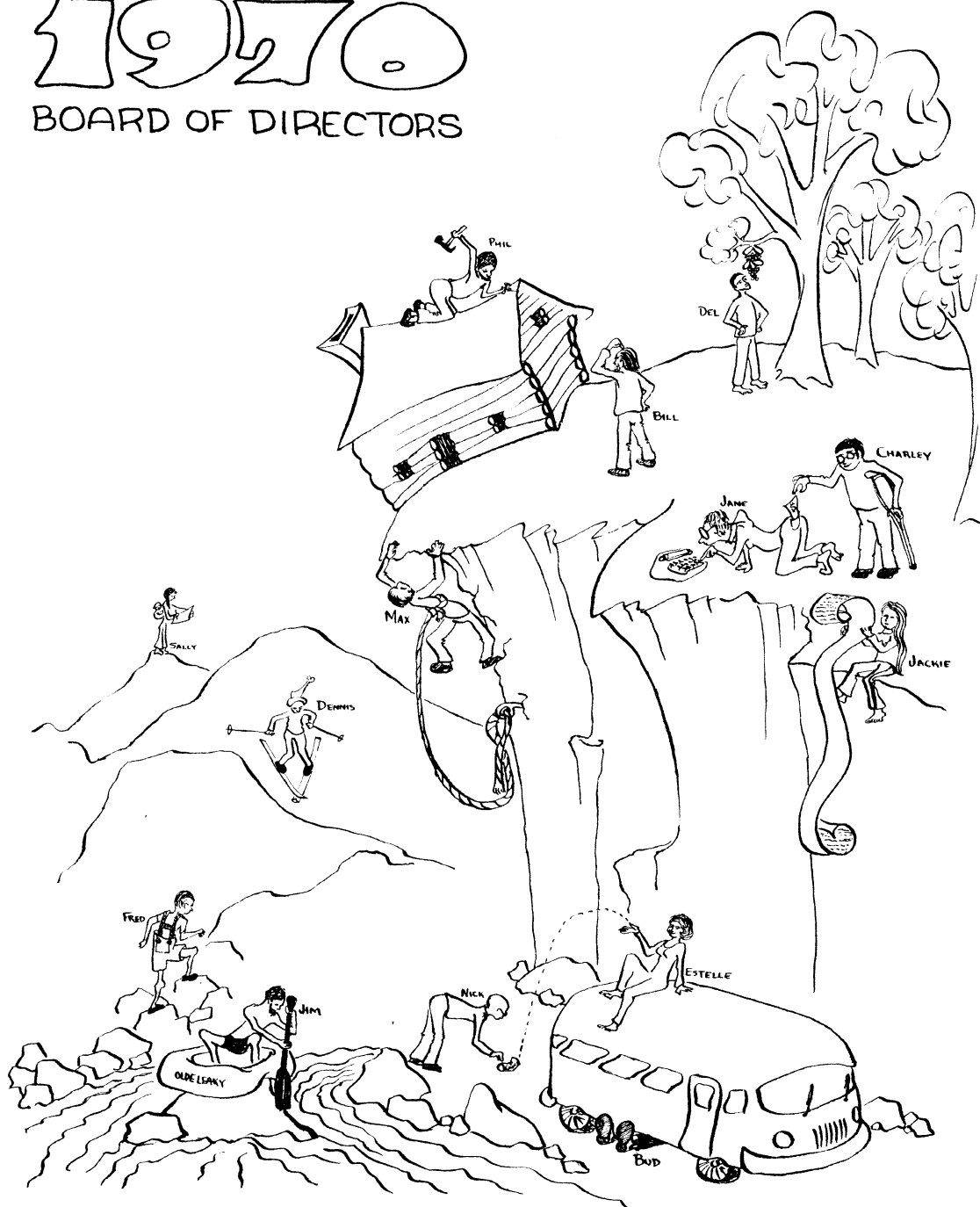
Cottonwood Canyon at 6:45 p.m..

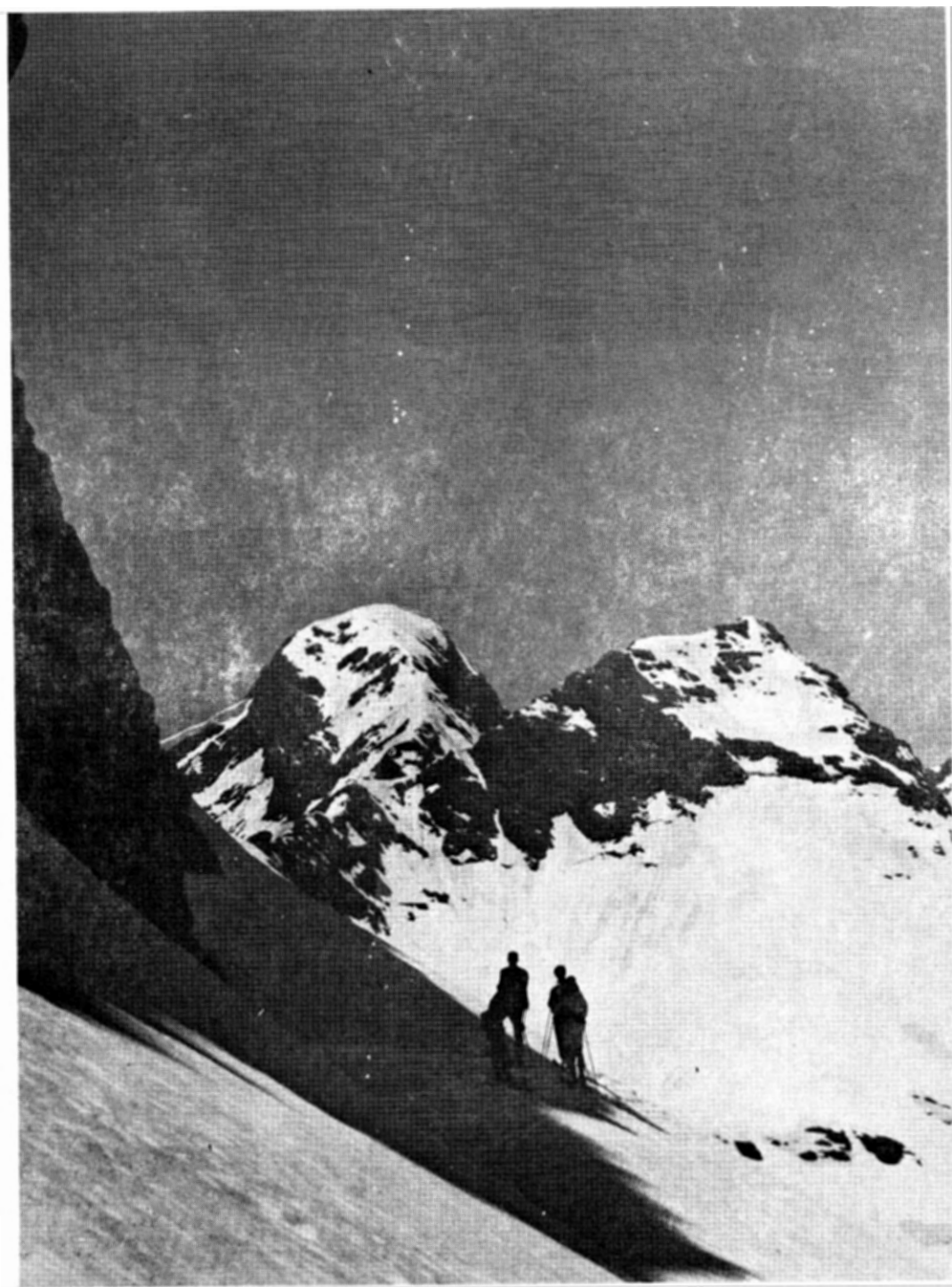
- Mar 22** **PARK CITY WEST - RIDGE RUN:** Intermediate (3,3)  
**Sun.** Once again here is a chance to see some of the territory served by the lifts of this new ski area. The route is in high country all the way with fine views of the Wasatch. Register with leader: Milt Hollander, for details, 277-1416
- Mar 22** **WINTER SOCIAL:**  
**Sun.** The last winter social of the season is scheduled for Bob & Denna Wright's NEW HOME: 3033 East, 5800 South, phone 272-1177 for information and directions.
- Mar 26** **FAMILY BACKPACK TRIP - MULEY TWIST CANYON**  
**-29** (WATERPOCKET FOLD)  
**Thurs-** This trip will be designed primarily for young backpackers,  
**Sunday** 12 years and younger. Parents should have previous backpacking experience. We will follow Muley Twist Canyon as it cuts dramatically through the Waterpocket Fold. The scenery will be outstanding. Total distance covered will be about 16 miles, all level or slightly downhill. Register early as the size of the group will be limited to about five families. Call trip leaders: Del & Carol Weins, 487-2584 for more information.
- Mar 28** **LAKE BLANCHE:** Advanced (3,5)  
**Sat.** This will be the last chance this year ( conditions permitting) to attempt this popular alpine tour. If necessary a suitable alternate will be arranged. For latest conditions check with leader: Dennis Caldwell, 278-2100. Meet at the mouth of Big Cottonwood Canyon at 7:15 a.m. for car spotting.
- Mar 29** **SILVER FORK:** Intermediate (3,3)  
**Sun.** This tour includes much of the scenery between Brighton and Alta. There is interesting skiing in Silver Fork Canyon. There are many variations depending on conditions. Meet at the mouth of Big Cottonwood Canyon at 8:15 a.m. leader: Bob Frohboese, 355-7218.

**DUES**

# 1970

## BOARD OF DIRECTORS





# NOTES ON SKI TOURING

by Dennis Caldwell

This has been a rather unstable year; however, conditions appear to be taking a turn for the better particularly on the Southern slopes. We will have to watch and wait. Flexibility is the key to the situation. There are many variations for a given tour depending on conditions. In search of safe alternatives we have discovered many new, out of the way places, well worth visiting any time.

The pace of a ski tour is generally set by the terrain and length. This means that many, if not most tours will have a certain range of tolerable paces which will provide the maximum enjoyment to the entire group. Although those who tend to move faster than the average have their nuisance value, the biggest detriment is the unreasonably slow skier, the person who has selected a trip beyond his endurance. Heartless as it may sound, such skiers are not welcome on tours. Not only do they impede the progress of the group, but by taxing the upper limits of their capabilities they increase the probability of injury on the downhill run.

The solution to the dilemma is to know your capabilities, both uphill and downhill. We have endeavored to give a comprehensive description of tours by cross referencing (of December Rambler). If there is a particular tour that is appealing but appears too challenging, plan ahead. Start with shorter tours and build up to it; don't haphazardly jump into the affair figuring that you will muddle through somehow. When things go wrong, you will be doing the lion's share of the suffering; but there are others looking on, silently suffering in their own small way.

The reason behind all this harsh talk is that leaders have recently been burdened with large numbers of skiers beyond their depth. It must be borne in mind that these benefactors are not paid for their services, and people should consequently weigh their own capabilities against the demands of the contemplated tour. In this way we can best serve the needs of the entire club. Qualified ski touring leaders are not plentiful, and we will be well advised to make things as easy as possible for them.

One of the charming aspects of the Mountain Club has been the informal manner with which so many of its activities can be conducted. In the past most criteria for determining a person's qualifications have been self imposed. We hope this situation will continue to a large degree.

The imposition of an elaborate system of qualifying events, as is practiced by many of the larger organizations, is a milestone that we would just as soon bypass. You can help by subjecting yourself to a dispassionate scrutiny before someone else must.

# PARK CITY RIDGE RUN

by Carol Edison

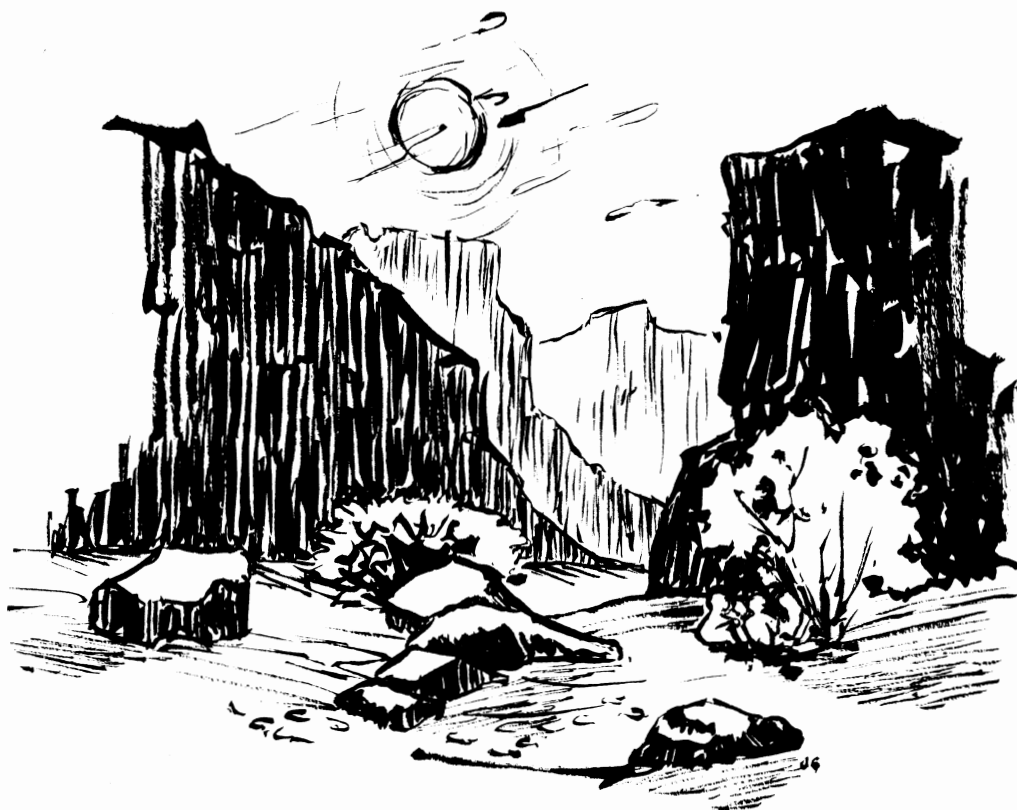
It was a really beautiful morning as we assembled at the parking lot at Park City West. The seven snowshoers (I was the one at the rear) hiked to the upper lift, took the lift, and waited and WAITED at the top. We discovered the reason when Milt Hollander, our leader, and the skiers joined us. Ruth Hensen had had an unfortunate accident skiing from one lift to the other. She suffered two breaks in her leg below the knee. Mary Belange stayed with Ruth to help. We all, and Milt especially, thank Mark for her assistance.

When all were assembled, we crossed the south side of Murdock Peak singly and on foot and then headed for the main Park City Ridge and had lunch looking over Millcreek Canyon.

The snowshoers then headed for Red Pine Canyon and the parking lot, meeting skiers there. This part of the tour was highlighted for me by continual tightening of bindings while observing enviously the trim backsides of others (I am really going on a diet!) and the awesome sight of Fred Bruenger running uphill and down keeping his splinter group in some sort of order (thank you, Fred). I am told the skiers had a fine second half.

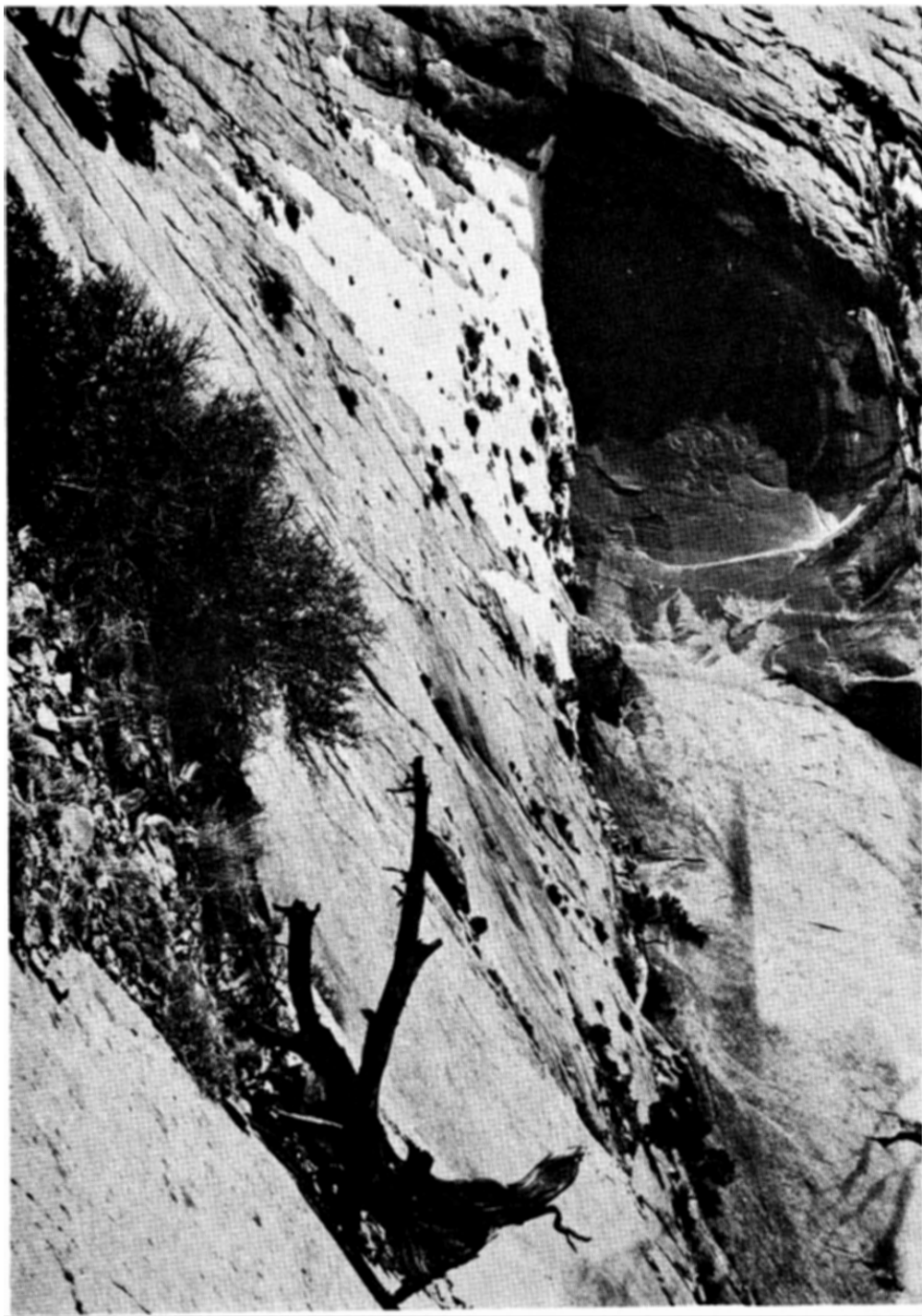
Participants were: John Macduff, Betty Botcher, Mike Belange, Carol Edison, Shelly Hyde, Don Coleman, Aaron Filler, Herman & Melba Wiebe, Fred & Eveline Bruenger, June & Al Wickham, Lief Hendrickson, John Riley, Dave Smith, Dave Boyd, Carol & Del Wiens, Suzanne Stensaas, Rob Thompson, Diana & Andy Schoenberg.





**DUES ARE DUE**





Deer Creek, Escalante



Recently, two large industries have launched a campaign to clean up the cans and trash that litter our landscape. Aluminum cans have been the worst offenders, for they do not oxidize and rust into the landscape, no matter how many decades of weather work on them. However, aluminum "beer" cans are salvageable as scrap, and can be melted down for reuse.. over and over again. With a cooperative public, aluminum cans may be the best answer to our litter problem.

The Adolph Coors Company has recently announced a no-limit plan to pay a dime per pound for scrap aluminum delivered to any of it's distributors. Twenty-three Coors 12-oz. cans weigh one pound. However, any aluminum containers, aluminum foil, etc., may qualify for the weigh-in. Literature providing further information and heavy-duty collection bags are probably available now, should you call the local Coors distributor.

"All Coors distributors will receive aluminum at their warehouses from both organizations

and individuals during hours to be determined by the individual distributor. Payment will be immediate.

Distributors, in turn, will forward the reclaimed aluminum to the Coors plant in Golden. Coors will process the aluminum in a mammoth shredder to be installed by March, and then will forward the shredded metal to aluminum companies for recycling.

'That process,' Coors says, 'can go on forever. This can be a major program for keeping America clean, and also for providing substantial revenue for deserving community projects'."

Recently, CBS News reported that the Reynolds Aluminum Company was also paying for salvaged scrap aluminum. I believe the price per pound quoted by Charles Curault, on-the-road, was 20¢ a might higher than that offered by Coors.

So, gather ye beer cans, while ye may. America may be clean some day.

# Timberline Sports Inc.

2959 HIGHLAND DR

## FOR SKIING

Ski parkas — Down  
Shells

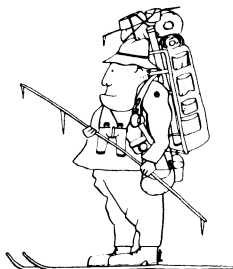
Knickers & Socks  
Accessories

## -- TOURING

Climbing skins & Skis  
Snowshoes & Packs  
Down clothing

## -- AFTER

Down booties  
After ski shoes



\* \* \* HOLIDAY HOURS \* \* \*

Mon & Fri 10 to 9  
Tues - Thur & Sat 10 to 6

# NEWS AND

# NOTICES

THANKS...

..to Kay Berger for typing the March Rambler.

..to Linda Rathbun for handling a trickier than usual mailing of the February Rambler. Mailers: Phil and Erik Nelson, plus Aunt Martha, Skip Snyder contributed his share of elbow grease too.

..to everyone who has already paid his dues for 1970.

ORTHOPEDICS...

Rol Ure, with a torn Achilles tendon, suffered while playing volleyball on Christmas Eve. Ruth Hensen with a leg broken in three places, while skiing, Neff Walker with tibia and fibula broken from skiing, Phil Nelson, with a ruptured Achilles tendon, from playing basketball.

DEADLINE..

..for the April Rambler is March 15th. Mail or deliver to Sally Nelson, 1218 Harvard Avenue, Salt Lake City, 84105

PLEASE TYPE YOUR ARTICLES.....

MANUAL OF SKI MOUNTAINEERING

edited by Dave Browers, (fourth edition, brand new) is available in hard cover from the Sierra Club at \$4.75. A paper back edition is available from Sport House, Concord, Mass., for 95¢.

Cover photo near the  
Waterpocket Fold by  
Nick Strickland.

DUES ARE DUE ... NOW!!

Wasatch Mountain Club business is conducted only on the first and third Wednesdays of each month. At that time, and only at that time, is the mail opened, new membership applications voted on, dues payments recorded, address changes made, lodge rentals approved, and all other business requiring board action conducted. All board members cannot attend all board meetings and although an effort is made to fill in during a member's absence, some business is held for action until the next meeting.

WASATCH MOUNTAIN CLUB

2959 Highland Drive, Salt Lake City, Utah 84106 Phone: 363-7150

APPLICATION FOR MEMBERSHIP

To the Board of Directors:

I hereby apply for membership in the Wasatch Mountain Club. I enclose the \$2.00 entrance fee and \$6.00 dues (spouse, \$3.00). Out of state membership dues are \$3.00 (spouse, \$1.50). The club event I have attended is \_\_\_\_\_ on \_\_\_\_\_ (date). I agree to abide by all the rules and regulations of the Club as specified in the constitution and by-laws and as determined by the Board of Directors.

Name (Printed) \_\_\_\_\_

Signature \_\_\_\_\_

(If spouse membership please include name of spouse (printed) \_\_\_\_\_

and signature \_\_\_\_\_

Address \_\_\_\_\_

City \_\_\_\_\_ State \_\_\_\_\_

Zip \_\_\_\_\_ Phone \_\_\_\_\_

Recommended by:

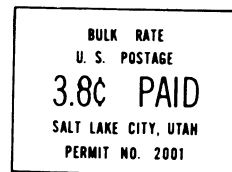
Member \_\_\_\_\_

Director: \_\_\_\_\_

(Effective 1 January through  
31 August, 1970).

WASATCH MOUNTAIN CLUB, INC.  
2959 Highland Drive  
Salt Lake City, Utah 84106

ADDRESS CORRECTION REQUESTED  
RETURN POSTAGE GUARANTEED



*Dues!*

#### BOARD OF DIRECTORS

DALE GREEN, President	277-6417
LEROY KUEHL, Vice-President	363-6890
BARBIE QUINN, Secretary	255-6396
EVELYN BRUENGER, Treasurer	485-2639
GERRY POWELSON, Boating	1-756-3004
NICK STRICKLAND, Conservation	364-1568
NOEL DE NEVERS, Entertainment and Recreation	363-1307
DICK BELL, Hiking	254-4555
LYMAN LEWIS, Lodge	277-6816
CAROL WIENS, Membership	487-2584
MAX TOWNSEND, Mountaineering	363-2269
SALLY NELSON, Publications	485-0237
DENNIS CALDWELL, Ski-Mountaineering	278-2100
RALPH HATHAWAY, Transportation	485-0257