



The Rambler

Official Publication of

THE WASATCH MOUNTAIN CLUB

Salt Lake City, Utah

May 1970 Fiftieth Anniversary Edition

WASATCH MOUNTAIN CLUB

Origins



Geo. Ringwood, "Rich." Siebert, Rolla Bigwood, Vern Townley, Leon Stoney.

Taken by Claude A. Stoney

On May 13, 1920 the Wasatch Mountain Club formally organized and began accepting new members. It had already existed but for the previous seven years the membership had been limited to those seven who joined together in August 1913. Six of these were; George Ringwood, "Rich" Siebert, Rolla Bigwood, Vern Townley, and brothers Leon and Claude Stoney. They had joined to share their interests in hiking, fishing, and skiing; and as you can guess, one needed more perseverance to pursue these activities in 1913 than we do now.

It wasn't until 1924-5, that women were first allowed to belong to the club. And



then, I understand, the gals provided quite an insistent hassle in their attempt to be allowed to join. What's a guy gonna do when he and the fellas want to go hiking, and when the truck that is to take them to the starting point is besieged by females? Throw 'em out! Sure, but they kept jumping back in until they were finally allowed to go along.

And it was the Mountain Club that introduced the wearing of pants and bloomers by women, to be sure, the community did not entirely approve. But then not everyone has loved the Mountain Club all the time.

The club even had headquarters in the 1920's: at Kodak or Main Street or downtown Salt Lake. There, many of the members' early photos were printed. Kodak displayed these in the window and made them available to those who wanted them for 5¢ each. After a few years, head-

Bob Smith
Rolla Bridgood

Sylven Dunn
Leon Stoney
Floyd Baleman

Jack Kent
Vern Townley

Hopkins photo



quarters moved to Wolfe's, and then out to "Pete's" shop, where the telephone still is maintained.

publications

From the earliest days the club made an effort to publicize its trips and activities. On August 1st, 1922, the first Rambler was published, then known as THE WASATCH RAMBLER. A small leaflet, only 3 1/2"x 6", it unfolded to four times its width, and informed its readers about the club's aim, its members' news, and a "Scheduale sic for Hikes and Outings." Printed inside was the following:



"The Wasatch Mountain Club was organized with thirteen members May 13, 1920, for the purpose of exploring and advertising Utah Scenery and to provide recreation."

"We began with one regular trip each month. It was not long until only seven members remained, they were Leon Stoney, Claude Stoney, Rolla Bidgood, Sylven Dunn, Vernon Townley, Lewis Casto and Robert Smith. These seven continued

making trips until the following Spring. Very little interest was taken until July 1921, when a trip to Bryce Canyon was scheduled. This brought in a few more members which looked more encouraging to us, we continued the best way possible all summer and in the fall we reorganized. This started things going and from then until now the club has grown to an active membership of over 150."

A photograph of the hard-core seven is printed above the article.

publicity

The club publicity did advertise Utah Scenery, making available for slide shows and lectures those photographs they had taken on their trips. Pictures of Bryce Canyon and Cedar Breaks were brought to Salt Lakers. The slide shows were very well attended. After a few years we turned the program over to the Chamber of Commerce whereupon it waned.

However, club outings did have a continued advertisement. The Salt Lake Tribune kindly printed an article after each club trip, telling where the hikers had gone and making note of the leaders and other members of the party. There are old newspapers in the 30's that Claude Stoney saved for us. Once, in the 30's, an entire Sunday magazine section was devoted to the club.

Meanwhile the format of the Rambler changed many times: to an impressive paper bound annual edition for 1924-25, to quarterly mimeographed flyers on the late 30's, with monthly schedule postcards, through many other formats and sizes, to what it is now.

extracurricular

Closely involved in the community's interest, the club was active early in mountain rescue operations. One of the first services involved an avalanche accident at the Cardiff Fork Mine. The mountain club rescued many of the survivors and helped to haul out the victims.

Some may remember a toboggan slide in Dry Canyon behind the Fort Douglas Officers' Club. The first in the area, the Club built it in the 1920's with plans drawn up by Claude and Leon Stoney's father. For many years it provided pleasure to the people of Salt Lake.

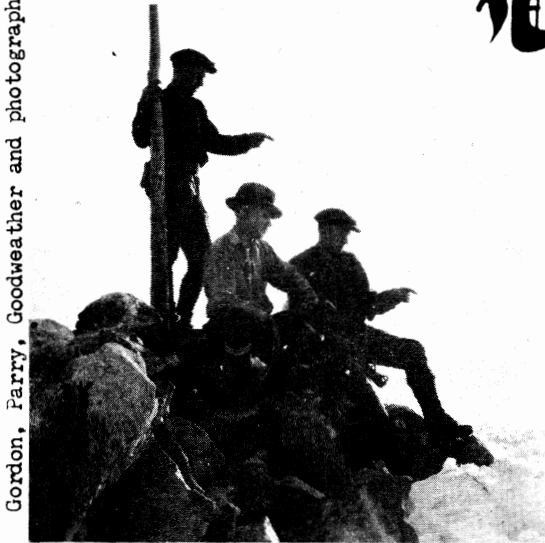
Did you know that the Wasatch Mountain Club purple and gold won the State Championship in Industrial League Basketball in the late 20's? We also had a commercial league basketball team, and teams for swimming, volleyball and football. Julia Stoney remembers being in the Club's drama group which presented performances 4 times a year to the community. And then there was the Wasatch Mountain Club Ladies Chorus, which is still going but under a different name (what is it? Anybody know?). All the other team activities ceased with the advent of World War II, including Dr. Ray Marsel's Geology Class, which had interested 30-40 people for four or five years. The class even published special bulletins about the geology of the area. This satisfied a hikers factual curiosity as well as his aesthetic interest.



1923

Hiking and Climbing

Hopkins atop Olympus



Gordon, Parry, Goodweather and photographer

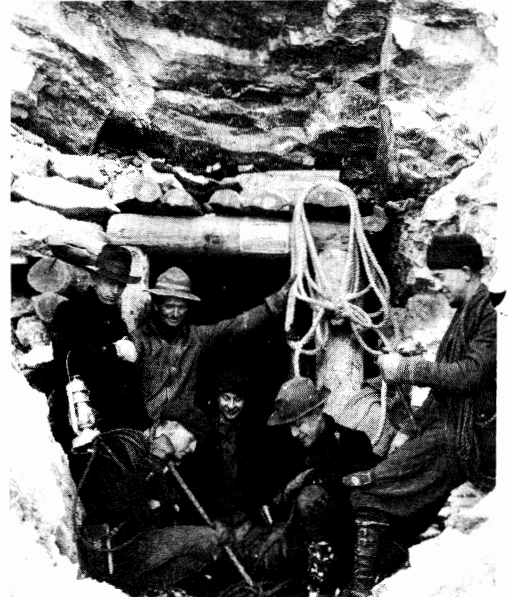
In that first Rambler, hikes were scheduled to "Brighton, Mt. Majestic and Lake Blanche," to "Grand Daddy Lakes" (where are they?), to "Coons Canyon" near Bingham, and to "Twin Peakes." Apparently transportation was provided for a dollar or so.

In 1919, the early members were involved in the rediscovery and exploration in Timpanogos Cave, although Forest Rangers West and Mann got the credit. The tunnel through which we walk today was dug by miners. They labored hard for six weeks, and were paid \$250.00, donated by the Wasatch

Hiking, one of the activities for which the club was formed, required a little more endurance to pursue in the early days of the club. The problem of getting to the base of the mountain demanded as much footwork as the hike itself.

For example, a group wishing to hike to Brighton would take the streetcar to the end of the line in Holladay. Alighting there, they commenced walking 19 miles to Brighton where they spent the night, probably at the Balsam Inn if not outdoors. The next day they would saunter over to Lake Blanche and then return that afternoon to Holladay corner where the streetcar picked them up for that final trip home.

One story has it that some hikes began as far west as State Street, adding a few extra paces to the excursions.



Mountain Club. There are early photos of the cave's formations. All with cameras would gather inside and "click" at the same time, when the flash powder went off. Six pictures could be procured this way, but then the photographers would have to wait until the following day for the air to clear! Good thing today's anti-pollutionists don't have to fight flash powder!

Since the beginning, the club's hiking went far and beyond merely hiking. A campaign to place registration mailboxes on top of all the peaks started as early as 1928. And the first trail to Lake Blanche was blazed by the Club, as well as the 75 mile trail to King's Peak.



1921: WMC installs mailbox on Timpanogas

Hopkins photo

As you can imagine, foot gear was a bit different in the teens and twenties. Hiking boots covered up to the knee, and laced and bound your leg and foot as tight as today's ski boots. Then in the thirties, various members started looking for another type. Chick Pfeiffer, then Club president (??) wrote from the Utah Shoe Repairing Company to the Bergman

Shoe Mfg. Co. in Portland, Oregon. To meet the problem, Bergman came out with a boot specially to meet the W.M.C.'s requirements. Named for the Club, the boot was called: "The Wasatch Boot."

In the days before vibruim soles, mountaineering was a bit different than

now. Imagine ascending the Grand Teton in hob-nail boots as 8 members did in 1924. Or the 1926 first group ascent of Angel's Landing in Zion Canyon with hob-nails! And the club didn't use ropes then either.

In fact, the use of ropes and pitons started only in 1931. That summer, Burt Jensen came out from New Hampshire where such gear was already in use. With "Pete" and Bill Kamp in tow, he

started club rock-climbing in the Wasatch. To cling to the rock, people put Swiss edging nails, and three-point Trikon nails into the edges of their boots. Such a boot provided better kicking than clinging, I suspect. But with nails they climbed, until 1955 when vibruim soles were introduced. And of course climbing has been very popular since 1960, as all Thursday nighters know.



Sunrise atop Timpanogas

Hopkins photo

Rivers

River running was initiated with the help of Francis Tate in about 1956-7. The Club then purchased three big pontoon boats (which are now stashed), and ran the Yampa-Green on May 10-12, 1957. Fifty-one people filled four boats (and two rented Lewis Brothers busses). Enroute they found themselves pulling the busses through the mud to get there and fighting a rather torrential flood in the river itself.

The water was so high that some of the boaters decided it would be safer to hike out than to follow through Split

Mountain. Each did as he would, and all returned safely to tell the story.

Some of the Yampa party never ran rivers again, but others were undaunted. Among the now historical trips were the Green through an undammed Flaming Gorge and the Colorado through unspoiled Glen Canyon. Now, of course we must look elsewhere for good river running. But currently we run them in smaller ten-man assault rafts. Would that we could still get them for \$75.00, as was possible 15 years ago!!



Rapids at Hell's Halfmile

photo by Mel Davis

Skiing

Skiing was one of the Club's early activities, and it was no mean accomplishment acquiring the equipment to pursue it. In 1918, ten men gathered to buy skis, but there weren't ten pairs in the entire State. Three pair were found in Salt Lake and a couple more in Ogden but the Club had to send to The Northland Ski Factory in St. Paul, Minnesota for the rest. Getting these took a full year. Then our hardy predecessors tried skiing without leather boot-harnesses for a year before sending away for them.

A favorite ski trip involved taking the Union Pacific Railroad to Park City and staying at Tim's Restaurant (Or was it the Senate Cafe??). Next morning, rested, they set out for Brighton, nine miles away.

Climbing was the tricky part, but before skins became available, skiers criss-crossed ropes about the front half of their skis, and Brighton became attainable.

There they stayed the night at Thayne's cabin. Mr. Thayne worked for the City Water Works, and the Club members would help him measure the water in the winter. Or they might stay at the Balsam Inn where Mr. Davis and his wife held proprietorship.

And so skiing continued for fifteen to twenty years. Not until 1932, did group skiing become popular in the valley. And then it was through the combined efforts of the W.M.C., The Utah Ski Club, and the University of Utah Hiking Club.

Agreeing to pool interests they arranged for low cost transportation with the Bingham Stage Lines, and started skiing every Sunday at Ecker's Hill in Parley's Canyon. This was still during the days before ski tows, the first lift being



Park City to Brighton: 1923

Hopkins photo

put in at Alta in 1935. The mountain club itself once owned a lift. In the early forties, they raised \$1,500 and build a T-Bar on the Great Western Slope, just East of (where) the present Forest Service Station at Brighton. But they soon sold the land rights, as they didn't use it much after a few years.

Meanwhile ski touring was gaining status in the eyes of the club, which ranked

it with hiking for the first time in 1939. On January 15, a qualifying trip was scheduled, whereupon members were to race against time from Brighton to Alta without becoming overly tired. Ten members and two non-members qualified by making the trip in about two hours.

Touring continues to be the major winter activity as the club frequently visits the ridges and canyons of the Wasatch.



1943 innovations in ski equipment

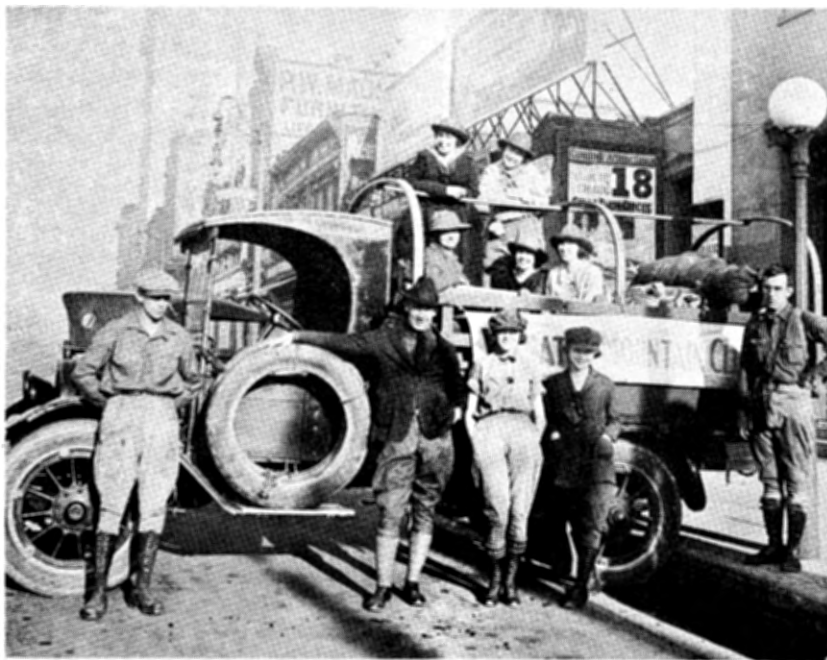
Busses and such



Even our Tortuga and Wasatch Cannonball have their predecessors. Pictured here is the first: Lew Casto's horse-and-wagon in 1915, which the prologue-club would take to Brighton (then known as Silver Lake). The nineteen miles from Casto Lane would take all night.

In 1921-22, automobiles began to travel the Big Cottonwood Canyon road, but it was passable only during a few late summer months, the snow blocking it until July. The possibility of getting the road plowed by county vehicles was in the club's interest for nearly 20 years; finally it was open for winter travel in the thirties, but during World War II it was left impassable for a few seasons.

As early as 1924, the Wasatch Mountain Club owned a bus. "Old Yorick", an Oldsmobile, was a 12-passenger model, but into it twenty hikers were known to squeeze. Old Yorick had belonged to a restaurant owner, (possible Lou Monta?) who planned to trade her in, and sold her to the club instead. Many a good hike started with Old Yorick; and she even went as far afield as Yellowstone and Bryce Canyon.



Old
Yorick

photo by Claude Stoney



Other modes of travel included the J & M Transfer Trucks. They were owned by a non-member (but a good guy nevertheless) who transported club members at very low cost, up the canyons as far as the roads went.

Twelve passenger Cadillac Touring Cars from the Bingham Stage Lines offered a far more elegant method of travel at another time in early club history. During the week, these cars ran regularly between Salt Lake City and Bingham. They would have stood idle on the weekends but for the Wasatch Mountain Club.

Another bus purchase was a 20-passenger Ford in the early 1930's. But the Club used it for only three weekends-which obviously did not rationalize its expense so they got rid of it.

Not until the advent of our river trips in the 50's did the Club feel the need to own a bus again.

In about 1962-63, we felt it necessary to have our own transportation, partly

because it was more and more difficult to rent busses for muddy and rocky road driving. Our first bus we purchased from 'Socotwa' (South Cottonwood Ward) dubbed it "Tortuga", and headed down for the annual San Juan river run.

The first night of the weekend, the boaters spent fixing the bus in Spanish Fork Canyon. In Moab it broke down again, and two or three more mechanical failures occurred before reaching Mexican Hat. To catch up with the time lost, the boaters spent 14 hours on the river the first day, and enjoyed a fine second day! Naturally on the trip home, Tortuga proved to be as ornery as before, breaking down at every turn. But she got everyone to American Fork before she finally conked out for good.

She was driven for a few more trips, but in 1967 the Club finally traded her in for our present Wasatch Cannonball. She has suffered her share of breakdowns and repairs, but proves far more reliable than Tortuga for weekly river trip schedules.

Lodgings

Skiers in the early days used to gather at Pinecrest, a hostelry in Emigration Canyon. Many very popular New Year's weekends consisted of skiing on to Pinecrest for a three day stay. The Hermitage in Ogden Canyon could be driven to, and that was usually the spot for Easter gatherings.

Not many years passed before the Club felt the need for a cabin of their own, a place for hikers and skiers to gather and talk. A full-fledged campaign for raising money was begun, and a great many people in the valley became club members. By 1928, the logs were being put up. At least 75% of the labor was





welcoming the New Year

party limited to 125

done by the W.M.C., but Mr. Green, a professional logman, was on hand to help too. The main part of the lodge was soon completed, and it was often enjoyed summers mostly, so that cooking was done out back.

When the need for a kitchen arose, one was added on in 1935, and around 1940 the front porch was added and the basement dug for the furnace. The lodge could be partitioned off for heat retention in the winters. The kitchen could also be closed off with glass doors to keep in the heat from the cook stove. The "throne" annex was constructed a few years later!

One of the most popular lodge functions ever held was the Spanish party in the early 40's. Three hundred members turned out for enchiladas and chili.

Club parties at the lodge continue to be popular today, but changes in transportation and habits have combined to decrease lodge-centered club activity from the intensity of years past.

As the Wasatch Mountain Club celebrates its Fiftieth Anniversary, our various activities continue with great energy for hopefully many other fifties of years.



Acknowledgements

Thanks to those members who shared with me reminiscences of the Club's early days. In particular, Claude and Julia Stoney were most helpful in supplying information and photos. Thanks also to O'dell (Pete) Peterson, Pa Parry, Janet Christensen, Stan Murdock, John MacDuff, and Austin Wahraftig. It is on the conversations with these people that much of the above information is based.

Most of the early photographs were taken by W. H. Hopkins, Leon Stoney

(who owned a photo shop), and Claude Stoney. Most are in remarkably good condition.

Apologies to those whom I was unable to contact. Any interested in sharing what they remember about the early days of the club are welcome to submit articles for publication in future 1970 RAMBLERS.

I am grateful also to Phil, and to Karil Frohboese who provided editorial assistance, and to Kay Berger for her typing between diaper changes.



HIKE IN WASATCH FOOTHILLS

by Kathy Fjeldsted

On April 4th the following hikers made the season's first hike in the Wasatch Foothills:

Leaders: Fred and Eveline Bruenger also John Riley

Hikers: Orlika Hepewald, Liz Choules, Kathy Fjeldsted, Ymelda Grisrimbo, Nancy, George, Tommy and Amy Melling, Larry Kremer, John and Roger and Joni Jackson, Bob and Stephen Howard, Gerhard Henschel, Diane Hess, Nena Larsen, June Zongker, Dale and Maureen Ogden, Richard, Scott and Gregg Jacobsen.

After introductions we headed for the foothills North of Red Butte Canyon, to rejuvenate spirits and recondition winter legs for the season ahead.

New experiences and surprises were waiting there to meet us. We would have missed some facinating fossil specimens, had not Fred Bruenger been there to identify them for us. Fred also met head on with a sage hen that seemed as

startled as he by the unexpected confrontation.

At the half way point we split up, and John Riley led the group this reporter followed. At midday we dined on a ridge overlooking Red Butte Canyon and watched a hawk soaring about in search of his noonday meal.

Back on our feet we trudged across hard-pack snow and wrestled with underbrush. Descending into a canyon, we saw snow give way to mud, spring flowers and butterflies.

Too soon we realized we were nearing the end of our hike. We began to meet old familiar sights of beer cans, and our fellow outdoor lovers on their trail bikes who greeted us with "those folks in the city just don't know what they are missing not getting out close to nature." Waving, they roared off in a cloud of exhaust; and we made our return to the city, filled with happy thoughts of a spring day in the hills.

SILVER FORK SKI TOUR

By Karil Frohboese

Charley Swift said that there are three ways to celebrate Easter; go to church, display fashionable garb, have and Easter parade. Five of us (Charlie and Tricia Swift, Don Fox, Bob and I, and no canines) chose to celebrate the day in parade fashion. Two of us even managed to add a touch of haute couture to the promenade--midi--length knickers.

The Silver Fork trip is for ski touring idealists; easy and beautiful. Winding gullies fringed by the deep green heaviness of fir trees completes the tour which begins with an unhurried climb from Twin Lakes Reservoir to the ridge which drops into the fork, via Twin Lakes Pass. A light snow fell most of the day adding an idyllic atmosphere to the trip, as well as a few extra inches to the already downy powder.

RIVER RATS Preview

by Jim Byrne

The River Rats Preview held April 10th at the W.M.C. Lodge drew over one hundred prospective river runners.

The novices were given an equipment demonstration and some pointers on how to waterproof, followed by a run through the Brighton Rapids and a water fight!

Fred Bruenger and Bill Viavant provided films of the Salmon, Desolation, and Cataract which turned everyone on to river running.

It was a fine kickoff for the boating season and we look forward to a full schedule of river running.

Timberline

Sports Inc.

SPECIALISTS IN LIGHT WEIGHT HIKING & CAMPING

fine packs — KELTY, MILLET
fine down gear — SIERRA DESIGNS
fine boots — LOWA, MEINDL, R R, R D



TIMBERLINE TOPICS

May 15 & 18

Informal talks on hiking & camping techniques

FREE Anyone is welcome

TENTS CLIMBING
CUISINE STOVES

Friendly service since 1961

M - S 10 - 6 2959 Highland Dr

Club Activities: May

REGISTRATION INFORMATION: Registration is not required for local, one-day outings unless otherwise mentioned. However, by registering with the leader you will be notified if the trip is cancelled. All outings generally leave the meeting place within 15 minutes of the scheduled meeting time. Register for bus-boat trips with the leader only by sending a deposit to the address listed. Leaders cannot register anyone without a deposit.

For river-trip cancellations less than a week prior to the trip, the Club must retain a \$5.00 registration fee.

May 2-3 SAN JUAN FLOAT TRIP:

Sat.- This beginners trip will take us from Aneth to Mexican Hat. Boaters will enjoy beautiful scenery and should see cliff dwellings and petroglyphs. Canoes welcome on this trip. Everyone planning to go is expected to attend the WORK PARTY (see April 26th) Departure time is Friday, May 1st at 7:00 p.m. from the Ice Plant (430 W. 2nd N.) to register or for further information contact trip leader: Bud Reid (298-7188) Fee: \$22.00

May 2 BIG BLACK MOUNTAIN Elevation 8,958 - Rating (6.5)(hike)
Sun. After "Little Black", "Big Black" on the North side seems to be the logical sequence. The usual approach is from the North via Mueller Park. There is likely to be some snow left at this time, or maybe more than just some so wear good boots! After all, "These boots are made for walking." Meet at Pete's Shop 425 S. 8th W. - 8 a.m. (remember DAYLIGHT SAVING TIME) Leader: good old Carl Bauer the Lifesaver: 355-6036

May 3 MOUNT OLYMPUS, Elevation 9,026 Rating 8.0 (hike)
Sun. Lets make our sacrifice to Zeus by taking this WMC favorite. The time should be just right for this pleasant walk. Neither "Elister Hill" alias "Coronary Alley" nor the final ascent should be unbearable. Meet South of Pete's Rock, 5600 Wasatch Blvd., 7 a.m., Leader: Fred Bruenger 485-2639

May 7 HIKERS CLIMBING COURSE - Third Session. Meet at Upper Pete's Rock.
Thurs.

May 9 BEGINNERS CLIMBING COURSE - First Session. Meet at 9 a.m. at the road
Sat. closure gate near the bottom of Little Cottonwood Canyon. For details see the write up in the April Rambler Register with Dave Allen 278-0230 by Wednesday May 6.

May 9 REYNOLDS PEAK (suited for families) Rating 4.5
Sat. We'll start out at Mill D in Big Cottonwood Canyon and take the route towards Dog Lake. Before reaching the lake we'll turn and make an easy ascent to the peak. There will be some snow, so be sure to wear good boots. The return trip can be taken over the same route or, if you prefer,

down into Butler Fork. This trip is suited for the less vigorous hiker and for youngsters with a little experience in hiking. Leader: Charley Keller, 278-2578. Meet at Mouth of Big Cottonwood Canyon 9 a.m..

May 9-10 LODGE FAMILY WEEKEND - FOLKDANCING!!

Sat.- Come and learn. Instruction for children and adults. Fun also for those who prefer to look on. (And you needn't have a family in order to participate - all welcome - just enjoy children). Arrive anytime after noon on Saturday. Bring your dinner and if you plan to stay overnight, a sleeping bag, adequate clothing, breakfast. HOSTESSES: Margaret Strickland 359-3176; Estelle Ta Foya 364-4126. Call for further information Fee: 75¢ per member; \$1.25 per adult guest; 75¢ per child guest.

May 10 THUNDER MOUNTAIN, Elevation 11, 150 Rating approx. 11

Sun. Due to snow conditions this year, it is not advisable to go up the North slope. We will try an alternate way, coming up from Alpine. For details call your leader: Charley Swift 277-2267

May 10 PROVO RIVER KAYAK & CANOE TRIP:

Sun. A good beginning and intermediate trip, except that all participants should have some experience at least on flat water. The water is cold, cold, cold, so you may want to bring a wet suit. A good life preserver is required. Register with the Leader: Cal Giddings 359-2588 by 9 p.m. Friday for trip details.

May 14 EVENING CLIMBING AT STORM MOUNTAIN.

Thurs.

May 16 & 17 DOLORES RIVER FLOAT TRIP

Sat. - A beginners trip through spectacular Slick Rock Canyon. This year we will cut off several miles of flat water by putting in below Slick Rock and thus save some time for exploring side canyons. Kayaks welcome on this trip. Register early with trip leader: Jim Byrne - 1183 4th Ave., 359-5631. Departure time is 7 p.m. Friday, May 15th, from the Ice Plant (430 W. 2nd N.) Fee: \$20.00

May 16 BEGINNERS CLIMBING COURSE: Second Session.

Sat.

May 16 BOX ELDER PEAK Elevation 11,100 Rating approx. 9

Sat. This hike is not only beautiful at the height of the fall colors but also in the glare of the spring sun. On clear days the summit offers an unsurpassed view of the most rugged scenery of the Wasatch Mountains. Bring your ice axe. We hope to get a good, fast ride down the snowfield on the Northwest slope. Meet at the Historic Marker South of State Prison by 7 a.m., Leader: Dick Bell 254-4555.

May 17 LAKE BLANCHE Rating 5.0

Sun. This is a hike in the low intermediate range. The view from the lake is one of the most magnificent features in the Wasatch. If you are strong enough and not satisfied with a rating of 5.0, Lake Blanche is the base for Superior, Sundial and several others that will suit the more vigorous hikers. Meet at the mouth of Big Cottonwood Canyon by 8 a.m.,

Your leader: Peter Hovingh

May 19 BACK PACK INSTRUCTION

Tues. Come and learn how to lighten your burden. This evening of casual instruction is intended especially for the novice and prospective back-packers of every age. Members of the hiking committee will be present to demonstrate and discuss with you available and necessary equipment and its use. Special emphasis will be placed on the planning of food, simple and gourmet (yes, you can have gourmet food without carrying more weight on your back). There will also be a movie of a back-pack trip into remote areas of the Grand Canyon. Meet at Fred Bruenger's - 2590 Yermo Ave., Time: Tues., May 19th, 7 p.m..

May 22 GRANDEUR PEAK Elevation approx. 8,300 Rating 5

Fri. This is the first moonlight hike of the season and probably the most popular one too. Your leader is Elmer Boyd 298-5531

May 23 BEGINNERS CLIMBING SESSION: Third and FINAL Session.

Sat.

May 23 & 24 SAN RAFAEL CANOE & KAYAK TRIP

Sat. - An easy and scenic float through the San Rafael Swell. This is an exploratory trip and the runoff on the San Rafael may be low this year. Sun. We could do this in one day or stretch it to two days and camp in the canyon. Call the leader: Jim Byrne 359-5631 and voice your preference.

May 23 LAKE SOLITUDE Rating 2.0

Sat. For a change, be gregarious; don't be a recluse. Judging from the popularity of this hike in past times, this day near Lake Solitude should not offer enough SOLITUDE, for you to practice SOLILOQUY. Anyone who can walk 3 miles with a minimum of elevation change can "master" this pleasant hike past several lakes of the Brighton Bowl. No youngsters, please, on this hike. Meet at Brighton Village Store by 8 a.m., you can have breakfast there. Leader: John Riley 485-2567

May 23-24 LODGE WEEKEND: WASATCH QUINQUAGENARIAN GATHERING

Sat. - (Adult only - 18 and over, not just 50 year olds!)

Sun. All you "new - timers", come meet the "old timers" of the Wasatch Mountain Club during our 50th Anniversary month. Mel and Clair Davis (278-3174) and Carl and Helen Chindgren (467-0922) will be hosting this weekend. Bring pot-luck. If you have any questions, call your hosts. Come for dinner if you are unable to stay overnight. For an evening and/or overnight of conviviality, club history, slides and a generally pleasant time around the fireplace, this is the weekend. 75¢ per member/\$1.25 guest

May 24 WILDCAT RIDGE Rating HIGHER

Sun. It's time again - Consider the hypothetical (and at the same time, real) case of a person who is in top condition (Harold), starts a hike with second wind and soon gains his third (Boone), has muscles like steel (LeRoy), enjoys exposure (Dick) and is wirey like Dale, then charge him with 5000 calories of high-energy food plus lots to drink and shoot him up Butlers Fork to Mount Raymond. From there he will acquire a high-amplitude wave-like motion until he takes a short refueling stop on

Mount Olympus from where he will finally descend and make a soft landing (mostly on his knees) below Pete's Rock. Be surprised, people like that are real in the W.M.C. (see last year's write-up). Are you? If yes, come along. Meet at Pete's Rock by 5:30 a.m., Register with leader: Dick Bell 254-4555.

May 28-31 DESOLATION CANYON FLOAT TRIP

Thur. - An intermediate trip through 120 miles of beautiful, roadless, and very isolated country. By using motors the first day we will have lots of time for exploring side canyons and extended Happy Hours. There are lots of good rapids which might entice some of the Kayakers along. This is a popular trip, so register early with trip leader: Fred Bruenger, 2590 Yermo Ave., S.L.C. 84109, 485-2639. Departure time is 7 p.m., May 27th from the Ice Plant (430 W. 2nd N.) Fee: \$25.00

May 30-31 DESERET PEAK Elevation approx. 11,000 Rating 8.0

Sat. - Spend your Memorial Day weekend in the Stansbury Mountains and enjoy the breathtaking view from the summit of Deseret Peak. At this time, not too many people will crowd the base of the peak. You may plan this as a two day outing and take your children if they are fit for an overnight stay, or you may make the ascent and the return trip in one day if you prefer. This is an excellent opportunity for you the young backpackers to try out your equipment. For details call Nick Strickland 364-1568 by Thursday May 28th.

May 31 FERGUSON CANYON (and Storm Mountain)

Sun. This canyon parallels Big Cottonwood for some distance, but it is not travelled very often. There are numerous waterfalls adding to the beauty of the canyon's seclusion. During the time of heavy spring runoff, the water may give you also just a grain of excitement. The upper section of the canyon is somewhat brushy, thus be prepared to make use of some clippers which the leader will provide. If you want to enjoy the scenery from the top, the rating is 9.0, but you are welcome to come along for only part of the way, as long as you are aware of your condition. Meet by 7 a.m., at the Mouth of Big Cottonwood Canyon. Leader: Bruce Christenson 278-9308

June 6 MOUNT SUPERIOR from Alta

Sat.

June 7 NO HIKES - LODGE WORK PARTY

Sun.

June 12-14 YAMPA - GREEN FLOAT TRIP (Intermediate)

Fri. - This trip is one of our extras this year. Those of you who couldn't get away for the four day Desolation Trip should jump at this bonus. A beautiful trip, and we should avoid the waiting lines at the rapids by not going on the Memorial Day Weekend. Perennial Yampa Rat, John MacDuff has consented to lead this trip (his 7th on the Yampa). Register with MacDuff - 3119 S. 2800 E., SLC 84109 - 484-1634. Departure from the Ice Plant (430 W. 2nd N.) at 7 p.m., Thurs., June 11th. Fee: \$20.00

June 20-21 ORDERVILLE CANYON

Sat. - All you lovers of the Zion Narros, here is your chance. Orderville Canyon, a very narrow and most spectacular side canyon of the Virgin River has been termed another jewel of Zion National Park. Several groups have hiked through the canyon during the last few years and found it most rewarding and a little challenging. Orderville Canyon terminates in the heart of the Zion Narrows. This is a one day hike of about 15 miles and you should be in reasonably good condition if you plan to come along. Since in the past two years there was only a very limited interest in our traditional Zion Narrows fall hike, we may not plan to take that one this year, which might be another reason for you to go through Orderville Canyon.

June 20-21 GREENRIVER FAMILY FLOAT TRIP

Sat. - Leader: Noel de Nevers - 363-1307
Sun.

June 27-SELWAY RIVER: Intermediate advanced

July 5 A small swift river in the Selway Bitterroot Wilderness area. This trip
Sat. - was scheduled in 1968 but did not go as it depends heavily on the water
Sun. year.

July 24-26 LODORE RIVER TRIP: Intermediate advanced

Fri. -
Sun.

Aug.8-9 SNAKE RIVER CANOE TRIP

Sat. -
Sun.

Aug. 15-16 FAMILY FLOAT TRIP (?)

Sat.-
Sun.

Aug.22-23 WESTWATER RIVER TRIP

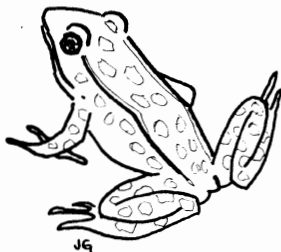
Sat.-Sun.

Sept.4-7 HELLS CANYON (?) or Jackson-

Fri.-Mon. Snake River, Sept.5-7

Sept.17-20 CATARACT RIVER TRIP

Thurs.-Sun.



NOTICES

HATCHED

Jennifer Berger on March 27th to
Kay and Phil

HITCHED

Phyllis and Oscar!

ANOTHER

new life member is Carl Chindgren

WHEN PARKING

...at Brighton, please leave your car as
far as possible from the manor and motel,
so as not to inconvenience guests.

THANKS

...to George Rathbun and June Zongker
for mailing the April Rambler.

...to Kay Berger for typing this month's
heavier than usual issue.

...to all who've paid their dues on
time, thus simplifying the tasks of the
mailing chairman.

JACKSON HOLE

MOUNTAIN GUIDES, INC.
TETON VILLAGE, WYOMING 83025

COME CLIMB !

WRITE FOR FULL INFORMATION ON
CLIMBING CAMPS, GUIDING IN
THE TETONS



Wasatch Mountain Club business is conducted only on the first and third Wednesdays of each month. At that time, and only at that time, is the mail opened, new membership applications voted on, dues payments recorded, address changes made, lodge rentals approved, and all other business requiring board action conducted. All board members cannot attend all board meetings and although an effort is made to fill in during a member's absence, some business is held for action until the next meeting.

WASATCH MOUNTAIN CLUB

2959 Highland Drive, Salt Lake City, Utah 84106 Phone: 363-7150

APPLICATION FOR MEMBERSHIP

To the Board of Directors:

I hereby apply for membership in the Wasatch Mountain Club. I enclose the \$2.00 entrance fee and \$6.00 dues (spouse, \$3.00). Out of state membership dues are \$3.00 (spouse, \$1.50). The club event I have attended is _____ on _____ (date). I agree to abide by all the rules and regulations of the Club as specified in the constitution and by-laws and as determined by the Board of Directors.

Name (Printed) _____

Signature _____

(If spouse membership please include name
of spouse (printed) _____

and signature _____

Address _____

City _____ State _____

Zip _____ Phone _____

Recommended by:

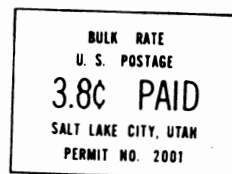
Member _____

Director: _____

(Effective 1 January through
31 August, 1970).

WASATCH MOUNTAIN CLUB, INC.
2959 Highland Drive
Salt Lake City, Utah 84106

ADDRESS CORRECTION REQUESTED
RETURN POSTAGE GUARANTEED



BOARD OF DIRECTORS

DEL WIENS, President-----	487-2584
JANE DAURELLE, Secretary-----	278-5025
CHARLEY SWIFT, Treasurer-----	277-2267
JIM BYRNE, Boating-----	359-5631
NICK STRICKLAND, Conservation-----	364-1568
ESTELLE TA FOYA, Entertainment and Recreation-----	364-4126
FRED BRUENGER, Hiking-----	485-2639
PHIL BERGER, Lodge-----	322-1873
JACKIE THOMAS, Membership-----	278-0394
MAX TOWNSEND, Mountaineering-----	363-2269
SALLY NELSON, Publications-----	485-0237
DENNIS CALDWELL, Ski-Mountaineering-----	278-2100
BUD REID, Transportation-----	298-7188