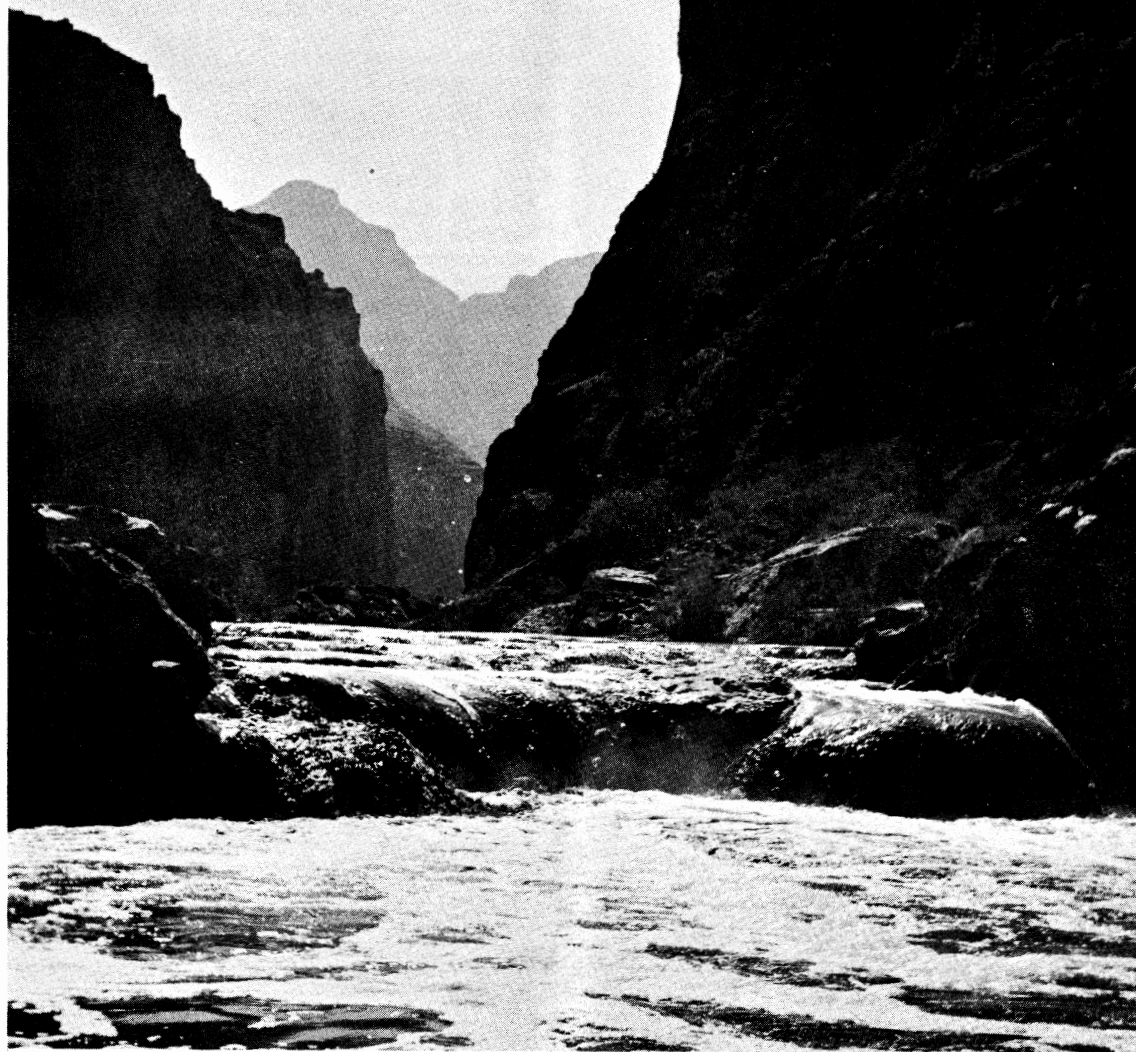


The Rambler

Official Publication of
THE WASATCH MOUNTAIN CLUB
Salt Lake City, Utah

NOVEMBER 1970



CLUB ACTIVITIES FOR NOVEMBER 1970

REGISTRATION INFORMATION: Registration is not required for local, one-day outings unless otherwise mentioned. However, by registering with the leader you will be notified if the trip is cancelled. All outings generally leave the meeting place within 15 minutes of the scheduled meeting time.

- Nov 1 MOUNT OLYMPUS NORTH AND SOUTH
Sun. If the weather permits, this trip will wind up our hiking activities in the Wasatch for this season. So let's finish it right. The north route is for the more experienced hiker since it involves considerable exposure. The route over Tolcats Canyon should - at the end of a vigorous hiking season be no problem. You have to register for Olympus North with the leader Meet at the Olympus Hills Shopping Center at 8 a.m.. Register with Dixon Smith 277-6334.
- Nov 7 CAMPING AND SKI-ING EXHIBITS PLUS SKI-TOURING SOCIAL
Sat. Starting at 2:30 p.m. exhibits of outdoor equipment will be shown at the WMC Lodge by such outfitters as "Holbart" and perhaps "Gerry" so if you are tired of your old inefficient outdoor gear, come and look at the latest. Each representative will demonstrate their wares. Who knows, you may win a door prize! The afternoon session will merge at about 7 p.m. into the first ski-touring social which will feature discussion of ski-touring equipment and advice to potential participants, slide show, and light refreshments. Admission 50¢, your host - Dennis Caldwell. Call Margaret Strickland (359-3176) or Jim Kaiser (364-1568) for more particulars.
- Nov 8 LODGE TO LAKE MARY - Beginners' Ski Tour!
Sun. Octobers first snow is occurring, at this writing, giving hope to an early and enjoyable ski touring season. The ski lifts may not yet be in operation so an elevation gain involving one's own effort of less than 800 ft. will be required. Attendance at the ski social of November 7th will clue beginners in some of the equipment and techniques involved in enjoying winter time ski touring or snow-shoeing. For those who stayed overnite Saturday at the lodge be ready at 9:30 a.m. Others should meet at the mouth of Big Cottonwood Canyon at 9 a.m. LEADER: Andy Schoenberg 278-4896
- Nov 13 RIVER RATS PARTY
Fri. River Rats - you have one last chance to relive this year's float trips before getting out your skis. We will have a short program on each of our trips this year so you will have a chance to see the rivers you didn't run. All you Westwater and Hell's Canyon Rats be sure to come as we will not have other slide parties for these trips. We hope to have a big turnout at the WMC lodge at 8 p.m.. You will have a chance to register your preference for next year's schedule. Please let us know by November 11th if you plan to come so that we can plan refreshments. (75¢ for lodge & drinks) Call June Zongker (487-5237) or Jim Byrne (359-5631).

when parking
at Brighton, please
park as far
from the manor
and motel.

Nov 14 SNAKE CREEK PASS - Beginners' Ski Tour!
Sat. The Mt. Majestic Lift may be in operation by this time and reduce the 1,300 ft. elevation gain, by one's effort, to 700 ft. to gain the pass. The route leads through a well wooded, pleasant trail with a relatively gentle grade. Snow-shoers are welcome. Meet at the mouth of Big Cottonwood Canyon at 9 a.m.. Leader: Al Wickham

Nov 21 LAKE SOLITUDE - Beginners' ski tour!
Sat. Another easy tour welcoming snowshoers and skiers to a pleasant ramble along some wooded gentle slopes. Lake Solitude's setting is synonymous with its name. Meet at the mouth of Big Cottonwood Canyon at 9 a.m.. Leader: Lyman Lewis 277-6816

Nov 26-27-28-29 SALT TRAIL AND GORGE OF THE LITTLE COLORADO RIVER
THANKSGIVING The approach to the Salt Trail is over some 30 miles of dirt road in the Navajo Reservation west of Echo Cliffs. The Little Colorado can be reached after 7 miles of hiking down this very steep, ill defined, rugged and often quite exposed route. The river here, provided there has been no flooding recently, has a milky-green appearance and provides with its many travertine ledges a very beautiful and contrasting picture against the red wall. A number of side canyons will be explored and a trip to Sipapu (the place where the souls of the ancestors of the Hopi Indians entered the earth) will be possible. You have to be in TOP physical condition to make this trip, but if you are, this backpack trip will be very rewarding. All drinking water has to be carried. Please do not try to register if you have not participated in at least 3 hikes rate 9 or higher during the last few months. Register with Fred Bruenger (485-2639) before November 20th or after that time until November 24th with Leroy Kuehl (363-6890).

Dec 6 GAD VALLEY - Intermediate - Advanced ski tour!
Sun. The whirly bird may be in operation by this time, but snow bird will still be sitting on it's egg. Last year at this time the skiing was worth the effort in Gad, despite the fluttering machinations of the Luftwaffe and its resulting debris. Meet at the mouth of Little Cottonwood Canyon for car spotting at 8:15 a.m. Leader: Gale Dick 359-5764

Dec 19th FAMILY CHRISTMAS PARTY

Sat Volunteers are needed to organize party. Call Margaret Strickland 359-3176 if you can help.

NEWS AND NOTICES

AWARDS

Paul Horton and Dave Smith were awarded "Mountaineer" Ratings at a meeting of the Senior Mountaineering Committee on October 12th.

THANKS

...To Linda Rathbun and crew for mailing the October Rambler.
...to Kay Berger for typing this month's issue.

FOR SALE

LeTrapeuer climbing boots, used only once. Size 8½ med., \$20.00 Call Caine Alder at 487-0485.

DEADLINE

for the December Rambler is November 15th. Deliver to Sally Nelson, 1218 Harvard Ave., SLC, 84105.

HITCHED

Dennis Caldwell and Karen Dahlgren
in Stockholm, Sweden on October 3rd.

LIMPING

Sam Ailan is in a walking cast
after a recent hike.

SHAKLEE'S

non-polluting soaps: Basic H,
Basic L, Basic D, etc. are completely
biodegradeable. Call Lynda
Fletcher 277-7222 if you wish to
learn details or want to try some.

conservation

There now is a full-time ecologist
for the conservation organizations of
Utah: the WMC, the Sierra Club, the
Audubon Society, etc. Frank Erickson
will be receiving a minimal salary from
a group in Arizona, on the condition
that the local groups here supply him
with office space, typewriter, and
other such expenses. The board recently
approved \$600 for this, a small price
to pay for a full-time conservationist.

When Congress provided for Lake
Powell, they included a provision
that measures be taken to protect
Rainbow Bridge--near the former Glenn
Canyon. As nothing yet as been done to
protect Rainbow Bridge, the Wasatch
Mountain Club has become co-plaintiff
with the Friends of the Earth in a
possible lawsuit against Walter Hickel
and the Department of the Interior.
The results of this case could be very
important for the future status of our
National Parks and Monuments. The
Friends of the Earth are very kindly
taking full financial responsibility
for this.

"Trail and Timberline" of the
Colorado Mountain Club tells us
that the container corporation of
America is heading a contest for
the nation's art students to design
a symbol to identify packages made
from recycled materials. In 1969,
11 million tons of paper products
were recycled.

The August "Trail and Timberline"
also mentions an Evansville,
Indiana housewife who persuaded two
major supermarkets to use paper
pulp egg cartons rather than the
polystyrene type. The plastic type
emits poisonous gases when burned.

The FWOC "Western Outdoor
Annual" announced that the San
Francisco Examiner is involved in
an effort to save trees by collecting
and recycling old newspapers. The
drive seems to have considerable
support from the Boy Scouts and other
civic organizations. Some midwestern
cities also are carrying on a re-
cycling operation, and hopefully
other cities will follow suit.

PARK CITY RIDGE RUN

by Sam Allan

The Park City Ridge Run is an in-
teresting variation of group hiking
in which no mountain or peak is sin-
gled out as an objective. Instead
the goal is to make a circuitous
tour of the upper basin scenic area,

hitting all points of highest interest, and detouring and extending the hike according to the desires and endurance capability of the group.

The Ridge Run on September 12th was planned as an intermediate 8-rated effort but grew as it progressed until at least one member began talking in terms of a 2-day event!

We had left our cars at the horse corral in Mill Creek Canyon while the dew was fresh on the leaves, and met the sun on the divide that overlooks Park City West. A breath of autumn had already touched the maples but that wasn't the only evidence of the waning summer season. At the divide we found a crew of maintenance technicians repairing and checking the Iron Horse Ski lift, who reminded us that hiking is about over and skiing about to begin. There were other evidences too that winter is near - Fran Flowers didn't take a swim when

we got to Lake Desolation, which we reached after an hour of fast walking southward along the ridge.

When we turned westward overlooking Brighton some of the members suggested that just one more minor extension of our hike would put us at the WMC Lodge in time for the square dancing festivities scheduled for the evening. But, cooler heads prevailed, I say regretfully, we turned northward and proceeded to Dog Lake, thence across the Mill Creek-Big Cottonwood Divide descending Big Water Canyon to the bottom of Mill Creek and point of beginning.

The group was all male except for Fran who can out-hike most of us males in the average situation.

Participating were: Lauren Williams John Riley, Lyman Lewis, Al Wickham, Fran Flowers, Sam Allan and Leader Chuck Mays.

NEW HOURS

MON-THURS Noon-8:00pm

FRI Noon-9:00pm

SAT 10:00-5:00pm

SAME GREAT SERVICE



*if you can't make it in during
regular hours, phone for a
special appointment-
466-2101*



2959 Highland Dr



by Phil Berger

Thank you - the turn out for the wood gathering at the lodge was overwhelming to say the least, 3 gallons of chilli and 15 quarts of sloppy joes were consumed by this hard working group!

In one day we chopped, sawed and carried in enough wood to last till next year! Now that you worked so hard why not go up and spend the weekend there with your family, only 50¢ a day or 75¢ to stay over night. No minimum fee required.

FAMILY HIKE TO CATHERINE PASS

by Margaret Strickland

The call of fall beckoned families and several single girls (men where were you!) to hike through the Brighton Mountains to Catherine Pass. We observed the last flowering of the paint brush and the beginnings of fall coloring which always gives one a thrill. Many of the hikers were new or prospective members and all expressed their pleasure of a pleasant hike which provided exercise and enjoyable chit-chat. Present were: Oliver, Barbara Tine & Stephan Richards; Marie Irvine; Marilyn Miciek; Irine Aulty, Margaret Hackman; Katherine Begles, Denise Thompson; Marsha Spaford Ruth Holland; Judy, Dennis & Richard, Rochelle, Becky Ikenberry; Kathy Fjeldsted, Monica Karlson; and Margaret and Gina Strickland.

folk dance evening

by Margaret Strickland

More people than anticipated turned out to put their best foot forward at the folkdance evening September 12th. The rousing folk music set everyone in motion and it was a joy to watch the smiles on the faces of everyone; or if they weren't smiling they were concentrating on catching onto the right step. As each dance ended everyone let out a big "oh"! as if to say, "boy am I out of breath, but it's such fun it's worth it". Let's hope we can have as big a turn out the next time a folk dance evening rolls around. Our thanks to our instructor Judy Allen.

REMINISCENCES OF HALL'S CANYON

by Sue Gregor

On September 16th the Cannon Ball ventured into the abyss of night with a weary crew of 23. For most crewmen the night seemed infinite. The monotony ended when driver Bob Everson was given a police escort through Mountain Home. Once again the ride contin-

ued, only to be disturbed by a few restless sleepers. At 5:30 a.m. the screeching sounds of Cannon Ball and crewmen aroused the town of Oxbow, Idaho (population 107) where breakfast was finally served. After that, leader Jim Byrne and crewmen scouted the water below Hell's Canyon Dam. The following is a collage of memorable accounts by river rats Stew Harvey, J. Dewell, Bob Everson, Sherm Dickman, Carol Greenlee, and anonymous crewmen. CAPTAIN HARVEY: There are but a few noteworthy events to recounts - the first being the surge of adrenaline when reading the I.P.&L. notice at the Dam: Flow for September 17 - 10,000 to 25,000 ft³/sec. 25,500! (It actually turned out to be 15,000 to 19,600.) There were mutterings about going home and about hanging Jim. Foolhardiness prevailed. We neither hung the dastardly leader nor turned back. I considered burning my membership card but feared getting caught in the draft. The next concern: was that water going to issue from below the dam as it does at Flaming Gorge - 41°F? A workman reported that it was 67°. (Ambient air temperature 55°) What a relief! At least we wouldn't freeze while we drowned. So off we went in 4 one-bladder boats (ours with one flat center seat).

For 11 miles of relatively easy going we pondered the nature of Wild Sheep Creek Rapids.

Suddenly, there it was. What a brute! Rock in the middle sending up a vertical wall of water several feet high, Gargantuan hole below, raging white water and oblique currents between the upper and lower shelves. Everybody scouts. Take a picture - damn! What a helluva place to run out of film, a replacement roll in the boat 1/4 mile upstream. Too late, those first boats have already gone through.

Gone through? Slick as a whistle; in on the left, skirt the hole, cross to the right, bring it around. We did that too, I guess. The truth is, we went through so fast, I didn't even look up until we were through. What velocity!

The next big rapid was to be Cache Creek (Granite Creek). A sharp 8 foot drop, so said Jones' map. What a disappointment - that abrupt river horizon characteristic of a big drop just wasn't there, and there was only a bit of whitewater showing along the rocky walls. "Well," says Big Mac, "let's follow Easy Everson and watch!" Good lord! They dropped out of sight! Then splash and a boat vomited skyward out of the water. There was Bob in the stern, madly signalling us to go left. That sneaky devil (the rapid not Bob, though the term is dually appropriate) was the last of the big benders (and after only 16 miles). Everything else was anticlimactic.

There were only little episodes such as when the don't-like-to-paddlers bickered with the like-to-paddlers, and the cap'n decided that the solution was to split the like-to-paddlers right and left for symmetry's sake and to allow loafing in the riffles. But last of all, I think of Commodore Byrne's concern for firewood. We were instructed not only load our craft with sundry faggots but also to tow a 15 foot log. Sometimes we towed it, other times it towed us. SOCIALITE EVERSON: Happy hours were an overwhelming success. The Thursday evening event being delayed because of late docking. Cordials were willingly extended and exchanged, with most imbibers retiring to bag and ground fairly early.

After a long afternoon in the chilling rain on Friday, the sight of a sandbeach campsite was most welcome. In the drudgery of unloading the boats and anticipating a wet camp,



photo by Bob Everson

Jay Dewell appeared distributing blackberry brandy and immediately the spirits of the group improved. Individual cannisters of various descriptions began to appear while dinner was prepared, wet clothing was dried, and plates were moistened. Spirits continued to improve and, with a more freely flowing vocabulary, Odin was called a Fink for the afternoon's aqueous atmosphere. This statement which was later retracted when Jay was confronted with other threats from Mother Nature. The hard core had to seek refuge beneath a poncho before the post-dinner happy hour drew to a close.

Because of loading the boats and equipment Saturday, the evening cocktail socializing was a bit scattered. However, the highlight came after most had retired and 4th of July sparklers were passed out to the campfire standers. As in a Midsummernight's Dream dancing points of light coursed between the tents and sleeping bags, fading one by one until only that of Twinkle Toes Hafterson remained. Then even that faded and the camp was quiet save for the chilling wind in the moonlight.

CREWMAN DICKMAN: (memories of Sherm

taken from a piece of scratch paper.) Velvety canyon walls - subtle, pastel browns and grays in the subdued sunlight, high trees giving way to grass as we proceed north; dark gray swirling water, hiding its sturgeon and salmon from our gaze; kayaks darting like sparrows among the boats, now ahead, now behind, knifing up through good rapids to take them a second time.

KAYAKER DEWELL: Hell's Canyon does not facilitate portaging or lining of rapids; as a result the first part of the canyon is rather taxing to the inexperienced kayaker. The canyon is ideal for the more experienced because of the warm water, large standing waves, and sharp eddies. Two or three notable exceptions notwithstanding, the rocks were sufficiently covered to present no real problems.

CHEF GREENLEE: Total calories consumed on the Snake River trip were 210,595. Among the more noteworthy nutrients consumed were: 9 lbs. cheese, 27 oz. more exotic cheeses, 3 lbs. butter, 3 qts. milk, 5 doz. eggs; 11 1/2 boxes crackers, 6 1/2 loaves of garlic bread; 15 cans fruit, 25 apples, 8 lbs. assorted fresh fruit, 3 1/2 lbs. dried fruit, 21 cans mandarin oranges, 32 servings pudding; 3 heads lettuce, 3 lbs. tomatoe sauce, 5 cans LaChoy Chow Mein, 48 potatoes, 7 lbs. candy, 4 pkgs. dextrose, 1 1/2 c. grapenuts, 1 c. chinese noodles, 1 pkg. familia, 6 cs. root beer, 2/3 gal. syrup, 3 cs. dog food, 10 lbs. sirloin steak, 2 pkgs. hot dogs, 3 lbs. salami, pepperoni, 3 lb. ham and 4 lbs. bacon.

Consumer-of-the-trip award goes to Cal Giddings who eats fresh mushroom filled with peanut butter.

ANONYMOUS MEMORIES: Other events of the trip were; the battle of the maps - 3 maps, 3 different versions, of every location; Captain Harvey's songs: "Raindrops Keep Falling on My

Head", "Water Boy", "Gotta' Have Water Today", "Singing in the Rain" and "Blue Skies" (sung when appropriate - rarely); Feuerzangenbowle: the Bruenger's wine and rum concoction - an epicurean delight; Sherm Dickman, the man who brings rain to every WMC trip; two women foolish enough to bring their husbands; never hugged, caressed or otherwise shown public affection! Jim's flip - end over end! The flying sturgeon, seen by only one crewman; the forest service's roofless doorless privy; remarkable for changing clothes in wet weather; the shuttlers - bored and amused when asked to help grate 4 pounds of cheese while riding in the bus; Chinese noodles which kept reappearing; Harvey's pancake flip - as big as the griddle; tent city - due to rain and lack of flat ground, tents were pitched pole-to-pole; snores were musical and confusing and one had to be careful not to get into the wrong tent (and also needed to be deaf!); Jay's spiritedness, bravery and considerateness on the first day of rapids; 2 kayakers turned into two bucketed soldiers, demanding an unending, unnegotiable water fight (with the wrong boat!); the steepness of the grade down to Hell's Canyon Dam - the brakes burned just keeping the bus on the road; a tow truck appearing at 2 a.m. as the weary crew pushed the bus off the freeway.

ACKNOWLEDGEMENTS: thanks...to our leader Jim for a successful trip; to Ruth for helping me edit and type; to Stew, Bob, Sherm, Jay, Carol and CREW for their inscriptions.

Captains: Fred Bruenger, Noel deNevers Bob Everson, Mike Gallagher, Hafty Hafterson, Dan Thomas, Stew Harvey and Lloyd McMahan.

Kayakers: Jim Byrne, Jay Dewell and Cal Giddings.

Rafters: Bob Anderson, Eveline Bruenger, Clancy deNevers, Sherm Dickman, Mary Jo Farrer, Carol Greenless, Sue Gregor, Ruth Henson, Kay Mandel and Richard Parks.

Shuttlers: Paul Horten and Rob Snyder.

side trip along Hell's Canyon
photo by Bob Everson



SKI LESSONS

SKIING LESSONS - ALTA

The group discount rates at Alta remain the same as last year - (for groups of 30 or more) the rates for combination lift ticket and 2 hour lessons by an Alta instructor are:

day pass + 2 hr. lesson - \$6
(regular day pass alone is \$5.50)

1/2 day pass + 2 hr. lesson - \$5
2 hr. lesson only - \$2.50
Albion day pass + 2 hr. lesson - \$4

sign up for 5 consecutive Sunday mornings (weather permitting) beginning January 3rd. CALL: Benita Jackson 322-0751 for further information, and to register.

SKIING LESSONS - BRIGHTON - WMC LODGE

If there is sufficient interest in lessons at Brighton we will have lessons there as well as Alta area. We hope to keep the lodge open so members with their families can ski the area and have lunch or dinner (or stay the weekend) at the WMC Lodge. Rates are not yet available, we want to check the members interest at this time so be sure to call on this: KAY BERGER 322-1873 by December 1st. We are encouraging families for lodge area skiing - perhaps arranging a sitter exchange or service from the lodge so moms can ski too.

REYNOLDS PEAK via MILL D NORTH

by Rebecca Price

It was a cool, crisp morning with the sun climbing slowly over the mountain peaks as 16 happy, friendly people met at the mouth of Big Cottonwood Canyon with Liz Choules as our leader. After deciding who would ride in whose car we drove to Butler Fork where a few cars were to ferry those who would leave their cars at Mill D North.

The fun group began hiking up a very easy trail through grasses, twigs, and dead flowers bent to the ground by a recent snow. Also in evidence were deer tracks, and someone, ahead on the trail thought they saw one disappear through the woods. It was a relaxing climb with the golden leaves of aspen trees thickly carpeting the ground and showering like rain upon the hikers.

As we neared Dog Lake, the sun came out making the hike more pleasant and the falling leaves more beautiful to pause and watch. Liz had her nature books along and some members stopped to identify different leaves.

After leaving the lake our trail

rose to a steeper climb and each member chose his own speed and reached the top of Raymond Peak in his own way. Some of us used the deer trails which assured good footing.

With one member turning back and one deciding to rest along the trail, 14 hikers opened their lunches at 11:45 and enjoyed the magnificent view and good conversation.

The trail down through Butler Fork was another easy one with some aspen leaves carpeting the ground, soft dark earth, very small patches of snow and a few pine and fir trees. Some of the trees were very old.

Our hike began at 9:45 and ended too soon, at 1:45 with everyone having enjoyed the time spent with new friends and a beautiful day.

Those making the climb were: Guillermo Pilar, Arturo Pilar, Barbara Heath, Lynn Landmesser, Michael & Ann McCarroll, Ted R. Thaxton, Delbert Reeves, Grace Ormsby, whose tiny poodle also made the hike, Rick and Helen Rappaport, Ruth Henson, Stewart Ogden, Rhonda Nielson, Yenta Kaufman, Charles Lesley, Dale Green, Dail Ogden Rebecca Price, and Liz Choules.

DROMEDARY PEAK

by Bruce Christenson

On September 13th at 7:30 a.m., Fran Flowers, Bill Drake and myself started off on a clear fall morning towards the seldom frequented Dromedary Peak. With Fran leading, we made a very fast ascent (somebody should tell her that she does not have to run UP mountains!) through Broad's Fork pausing only to sample the various wild berries growing there, and to briefly discuss with geologist Bill the area's formations. We made

an even faster retreat from the icy wind-swept summit ridge to a sheltered and sunny spot on the saddle between Dromedary and Twin Peaks. There with a view of the canyons below we enjoyed our lunches and sampled Bill's goat milk brine cheese. After some jungle like bush-wacking (Fred Bruenger, we need a trail clearing crew up here - or a better trail finder?) we made our way down the mountain to the end of a pleasant and beautiful hike.

WASATCH FRONT MASTER PLAN

TRAIL STUDY GUIDE

NAME OF TRAIL: _____ Date studied: _____

Type of trail: 1. Ungraded and essentially unmaintained
(circle one) 2. Graded and maintained
3. For motorized vehicles

Condition of trail: good so-so poor that's a trail?

Observations:

Use by trail bikes _____

Is a natural barrier feasible for prohibiting motorized vehicles? _____

where? _____ Erosion or deterioration of trail _____

Can it be corrected? _____ Litter along trail: _____

Should litter barrels be placed by the
trail? _____ Wildlife observed: _____

Trail markers: _____

Should markers be added in any location: _____ Where? _____

Is the parking adequate for the amount of trail use? _____ Is there water along
the trail? _____ Polluted? _____ Are there any hazards for hikers? _____

COMMENTS: _____

(over)

CAMPSITES AND PICNIC AREAS

RECOMMENDATIONS: (Does area need to be returned to a non-use status in order to recover from people damage?)

NAME _____
ADDRESS _____
PHONE _____

13



Cover photo of the Little Colorado River Gorge by Fred Bruenger

Wasatch Mountain Club business is conducted only on the first and third Wednesdays of each month. At that time, and only at that time, is the mail opened, new membership applications voted on, dues payments recorded, address changes made, lodge rentals approved, and all other business requiring board action conducted. All board members cannot attend all board meetings and although an effort is made to fill in during a member's absence, some business is held for action until the next meeting.

WASATCH MOUNTAIN CLUB
2959 Highland Drive, Salt Lake City, Utah 84106 Phone: 363-7150

APPLICATION FOR MEMBERSHIP

To the Board of Directors:

I hereby apply for membership in the Wasatch Mountain Club. I enclose the \$4.00 entrance fee and \$3.00 dues (spouse \$1.50). Out of state membership dues are \$1.50 (spouse 75¢). I agree to abide by all the rules and regulations of the Club as specified in the constitution and by-laws and as determined by the Board of Directors.

Name (printed) _____

Event attended: _____

Signature _____

_____ on (date) _____

(If spouse membership please print
name of spouse) _____

Recommended by (please obtain signatures
of a member and a director):

and signature _____

Member _____

Address _____

Director _____

City _____ State _____

(Effective September 1 through
December 31, 1970)

Zip _____ Phone _____

WASATCH MOUNTAIN CLUB, INC.
2959 Highland Drive
Salt Lake City, Utah 84106

ADDRESS CORRECTION REQUESTED
RETURN POSTAGE GUARANTEED



BOARD OF DIRECTORS

DEL WIENS, President	487-2584
JANE DAURELLE, Secretary	278-5025
CHARLEY SWIFT, Treasurer	277-2267
JIM BYRNE, Boating	359-5631
NICK STRICKLAND, Conservation	364-1568
MARGARET STRICKLAND, Entertainment	359-3176
FRED BRUENGER, Hiking	485-2639
PHIL BERGER, Lodge	322-1873
JACKIE THOMAS, Membership	278-0394
MAX TOWNSEND, Mountaineering	363-2269
SALLY NELSON, Publications	485-0237
DENNIS CALDWELL, Ski-Mountaineering	278-2100
BUD REID, Transportation	298-7188