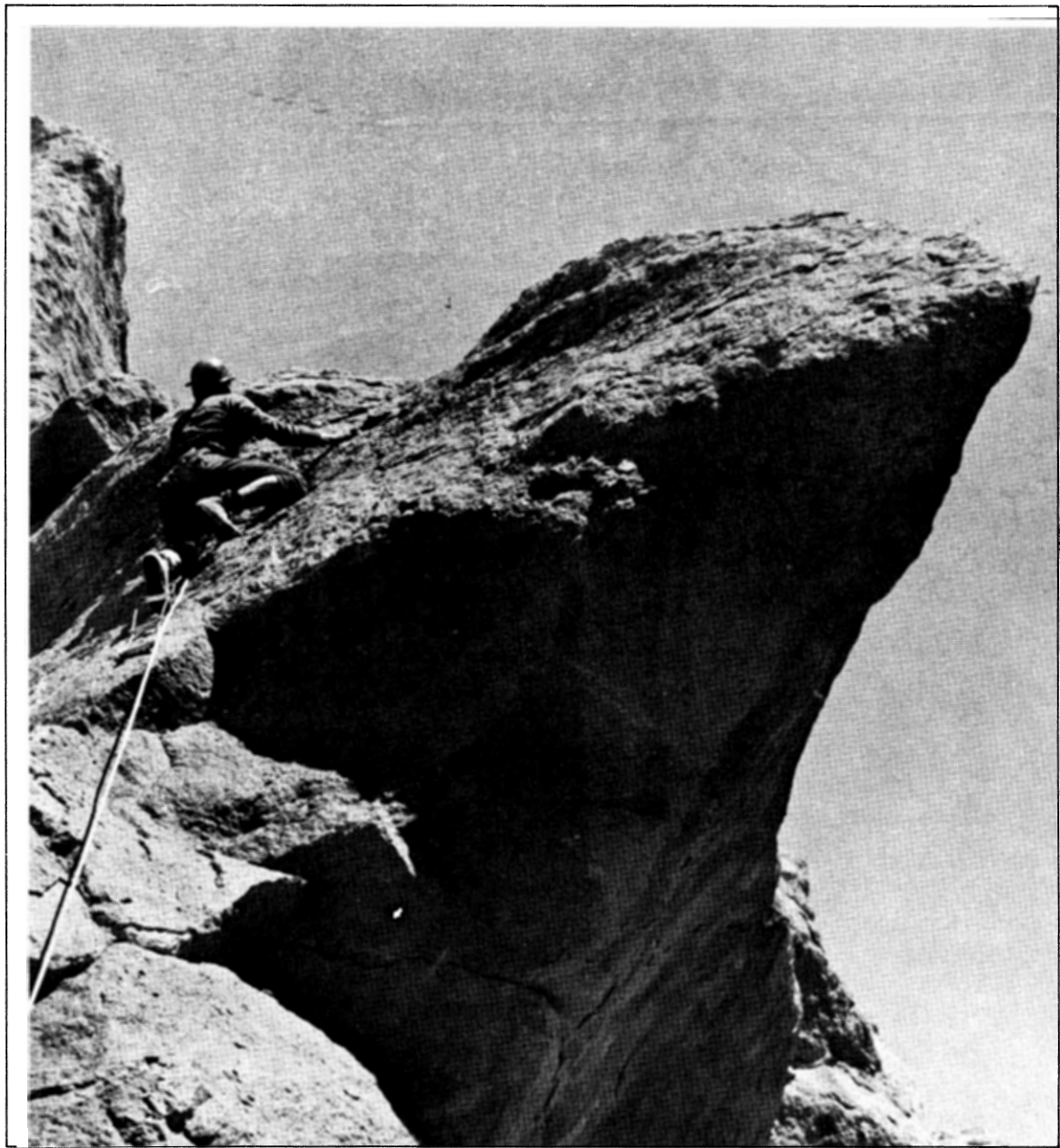


The Rambler

JULY 1971



Official publication of THE WASATCH MOUNTAIN CLUB Salt Lake City, Utah

club activities for july 1971

REGISTRATION INFORMATION: Registration is generally not required for members participating in easy or intermediate hiking (Rating below 7.0). Unless specifically stated, advanced hikes (Rating above 7.0) require registration

with the leader. Adequate equipment is an absolute must. You cannot participate in these events if you have not shown your ability on other hiking activities and if you do not have adequate and well broken in boots with good Vibram type soles and suitable protective clothing. Special equipment like an ice axe etc. may also be specified and you are required to be able to handle such equipment. Remember that these restrictions are set for your own safety and that of your fellow members. For rules regarding participation of children consult the May Rambler. Register for bus trips with the leader only by sending a deposit to the address listed. Leaders cannot register anyone without a deposit.

For bus trip cancellations less than a week prior to the trip, the Club must retain a \$5.00 registration fee.

July 1 EVENING CLIMBING AT STORM MOUNTAIN
Thurs.

July 2-5 MOUNTAINEERING HIGH CAMP - The Wind Rivers, Big Sandy Lake, and the Cirque of the Towers will be the location for our first non-local high camp. The camp will be located at either Big Sandy Lake or Lonesome Lake in the Cirque of the Towers depending upon snow conditions. The plan is to drive up Fri. night, hike in Sat. morning, and climb, fish, or hike until Monday afternoon when we'll hike out and drive home. The area will offer both excellent rock and snow climbing. Register with Dave Smith, 266-5229 or 466-2101.

4TH OF JULY WEEKEND - If you are in good condition, join the mountaineers for a backpack-hiking trip in the Wind Rivers. See above for details.

July 3-5 LODORE - Intermediate-Advanced -- Again this year the trip
Sat-Mon. will start at the Gates of Lodore and will pass through Lodore Canyon (first night), Whirlpool Canyon (Jones Hole-second night), and Split Mountain. This has always been an exciting and rewarding trip! Trip fee: \$20. Register with a \$5 deposit to George Rathbun, 5480 South 235 East, Apt. A, Salt Lake City 84107. At the present time, the trip will be limited to 25 adults, and participants are expected to attend the work party scheduled for Tuesday, June 29 at 6:00 p.m.

- July 3-5 ZION NARROWS EXPLORATION - The beginning of July is not yet
Sat-Mon the time of heavy thunderstorms and the time is highly recommended by the Park Service for the Narrows hike. Rocks may be a little slick - but when are they not? We intend to spend a full day in Goose Creek Canyon which is unexplored and with its high cliffs very scenic. Let's try it in a different way. Transportation is by private vehicles. Leader: Fred Bruenger, 485-2639.
- July 3 AMERICAN FORK TWINS TO WHITE PINE - Rating 11+ -- We will
Sat. start from Albion Basin, go up Baldy and then continue along the ridge. Be prepared not only for some exposure but also to feel the painful destruction going on in that part of the Wasatch, the beginning of the great exploitation of our mountains for the "benefit of profit making." Instead of returning from the Twins, we shall continue via Red Baldy and White Pine Canyon. Registration is a must. Meet at the mouth of Little Cottonwood Canyon at 6:30 a.m. Leader Dick Bell, 254-4555.
- July 3 LAKE SOLITUDE - Want to take it easy on this long weekend?
Sat. This is the right tour to take. Non-members and families are welcome. Meet at the mouth of Big Cottonwood at 9:00 a.m. Leader: Liz Choules, 355-0383.
- July 4 PRESCHOOLERS POTLUCK -- Bring the kids to the lodge for a
Sun. 4th of July pandemoniacal potluck, especially for families with children age 0 through 6. Potluck dinner will be at noonish; lodge will be open from 9 a.m. to 5 p.m. Disorganized "hikes" in various directions will depart at random times. Please call the Nelsons Friday night to tell what type dish you plan to bring. Bring your own plates, utensils, beverage, and graham crackers. Host: Phil and Sally Nelson, 485-0237.
- July 4 DEVIL'S CASTLE - Rating 6 -- This hike is neither long nor
Sun. strenuous, but the "devil is in his castle" to greet you with plenty of exposure. No youngsters please! Meet at the mouth of Little Cottonwood Canyon at 8:00 a.m. Leader ?
- July 4 SUNSET PEAK - Rating 3 -- This is a hike for those who want
Sun. to relax for a few hours and get away from the city heat. Excellent for beginners. Meet at the WMC Lodge at 8:30 a.m. Leader: Guillermo Pilar.
- July 5 HONEYCOMB CLIFF -- We will go past several lakes of the
Mon. Brighton area and then across the ridge to Honeycomb Canyon and Silverfork. Meet at the WMC Lodge at 8:30 a.m. Leader: Elmer Boyd.
- July 8 EVENING CLIMBING AT STORM MOUNTAIN
Thurs.
- July 8 THURSDAY EVE HIKE - as far as 45 minutes and a slow pace

will take us up the Lake Blanche trail. Meet at 7 p.m. in the Storm Mountain reservoir parking lot. Join the climbers after for refreshments. Bring a jacket. Leader: Dale Green, 277-6417.

July 9 MOUNT RAYMOND MOONLIGHT HIKE - Elevation 10,240 - Rating 9.
Fri. This and the next moonlight hike are tailored for the more advanced hiker. We will either approach the peak from the Butler Fork or from Hidden Falls. Either way will be enjoyable. The peak should be reached before darkness. Meet at the mouth of Big Cottonwood Canyon at 6:30 p.m. Leader: Lyman Lewis, 277-6816.

July COLORADO TEENAGE TRIP -- Teenagers are not permitted on reg-
10-11 ular club river trips and Family River Trips are mostly too
Sat-Sun. boring for them. However, our youngsters (age 12-18) should have a chance to ride some good rapids and to maneuver some wildwater. We would like to invite you, the youngsters of club members to this trip which will begin below Dewey Bridge and end at Moab. There are some good rapids in this stretch of the Colorado and you can graduate to Knights of the First Order of River Rats. The trip is intended for young people only - not their parents. The most experienced captains of the club will try to bridge the generation gap and do everything to make this a real fun trip. Leader: Fred Bruenger, 485-2639.

July 10 LAKE CATHRINE FROM THE LODGE - Rating 3.5 - This activity
Sat. is well suited for the beginner, the newcomer, and the leisurely hiker. Those who want to do more, will have an opportunity to look down into Alta (now buzzing with construction and "development," but don't overdo, tomorrow is WORK PARTY at the lodge. Meet at the lodge at 9:30 a.m. Leader: Jean Torreygon, 355-8204.

July 10 TWIN PEAKS VIA BROADS FORK (AND, MAYBE, STAIRS GULCH). Eleva-
Sat. tion 11,330 - Rating 10.5 -- May St. Peter - in Europe he is believed to be in charge of the weather - be friendly to the Club and grant us favorable conditions. After all, we haven't had too much luck yet. The upper section of this route offers plenty of excitement in form of exposure, so be prepared. You must register with the leader. Meet at the mouth of Big Cottonwood Canyon at 7:30 a.m. Leader: Gerhard Henschel, 355-1667.

July 11 L O D G E W O R K P A R T Y F R E E...Yes, all the food
Sun. beer and soft drinks in exchange for some work! After a year the lodge is in real need of repair. Won't all of you please come out and do your fair share. Call Phil Berger for further information, 322-1873. Phil will be at the lodge from 8:30 a.m. on - working. You're welcome to join him.

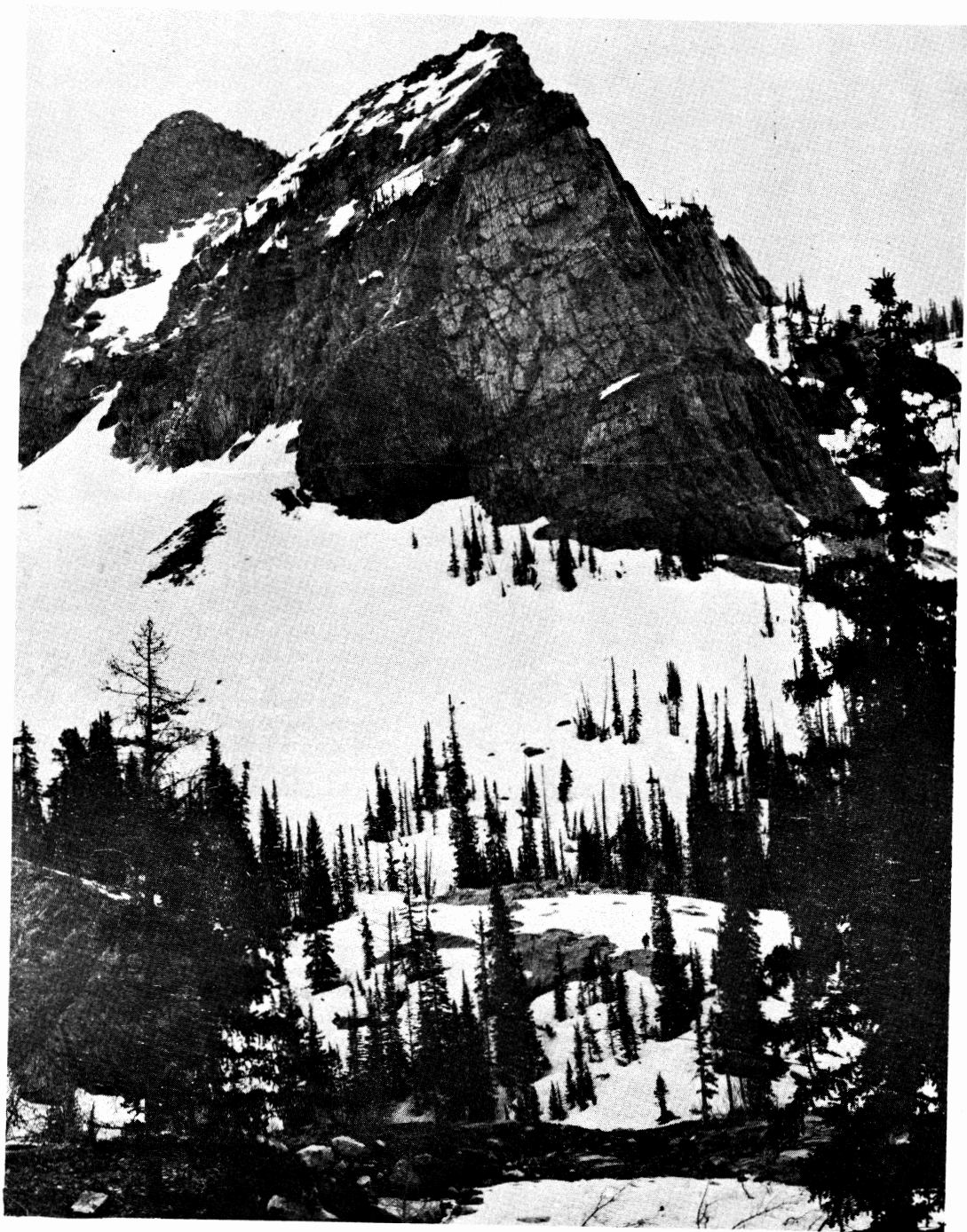
- July 11 Sun. CAVE TRIP - Leader's Choice. Probably one or more caves intersected by a mine in the local (less than 100 miles) area. Minimum equipment requirement applies (see June Rambler). Call leader for rentals. Register to find out where and when to meet. Transportation - 1¢ per mile. Leader: Dale Green, 277-6417 evenings or 486-6911 ext 270 working hours. Maximum registration: 12 including leader.
- July 13 Tues. LADIES HIKE - Helen Chindgren will lead you up to Scots Pass, then several miles along the ridge to Mill D and down Lake Desolation. This is a little more than just a break-fast hike or an afternoon walk, but the scenery will reward you for your effort. Bring lunch and water. Meet at the mouth of Big Cottonwood Canyon at 8:30 a.m. Leader: Helen Chindgren, 467-0922.
- July 14 Wed. ATTENTION TEENAGERS!! -- We will hike up to "Majestic" Clayton Peak. Get a few snacks and come along. Meet at the Lodge at 9:30 a.m. Leader: Emily Hall, 277-1555.
- July 14 Wed. GENERAL MEMBERSHIP MEETING AT THE LODGE - The purpose of this meeting is to inform the membership of recent and proposed activities of the Conservation Committee, and to obtain feedback from the membership. See "Conservation Comments" in this issue for further details. 7:30 p.m.
- July 15 Thurs. EVENING CLIMBING AT STORM MOUNTAIN
- July 17 Sat. LONE PEAK VIA CORNER CANYON - Rating 11
Two attempts earlier in the season were hampered by snow and rain, so...it must be good weather now. This is a fairly strenuous hike, which will lead you up into the rugged alpine country and quiet wilderness. Meet at Southeast corner of 19400 South and 9th East at 6:30 a.m. Leader: John MacDuff, 454-1634.
- July 17 Sat. LITTLE WATER PEAK, Elevation 9605, Rating 3.5 -- Nice and pleasant, easy and enjoyable! Good hike for everyone. No blisters, not even for those with tender, tender feet. Meet at the mouth of Big Cottonwood Canyon at 9:30 a.m. Leader: John Riley, 485-2567.
- July 17 Sat. WILDLLOWER HIKE - Mike Treshow will acquaint you with everything that is green or blooms. This should be the height of the wildlower season. Even if you think, you know them all, you will have a few surprises. Children and families welcome. Meet at the Lodge at 9:30 a.m. Leader: Mike Treshow (no registration necessary).
- July 17-25 MAIN SALMON RIVER, IDAHO - Intermediate-advanced -- The "River of No Return" will be run for 145 miles between Shupe and Riggins, Idaho through the deep evergreen strewn

canyons filled with a myriad of wildlife - beaver, deer, moose, big horn sheep, golden and bald eagles and bow-wildy-beasty-fontanes. The water is clear (and cold), and the "white water" is white as opposed to beige as in the rivers of Utah. Community cooking and schedules will be arranged. Many places have already been filled, so don't delay. \$5 deposit with the balance (\$44 total) payable at the work party at the ice plant July 13, 7:00 p.m. A shuttler for the bus is also needed, and this is an excellent opportunity to do some camping and/or hiking in northern Idaho. Contact Bob Everson, 2613 Imperial Street, Salt Lake City, 487-0029 or 322-8495.

- July 18 Sun. MOUNT OLYMPUS NORTH AND SOUTH - Elevation 8960 - Rating 9
The north side of Olympus is quite steep, has no trail and offers plenty of exposure, a very rewarding combination of hiking, climbing and "craxel" (if you know what that means). The route over Tolcats Canyon should offer no problems except the heat. You must register with the leader. Meet at the Olympus Shopping Center, 3900 South at 7:00 a.m. Leader: LeRoy Kuehl, 363-6890.
- July 22 Thurs. EVENING CLIMBING AT STORM MOUNTAIN
- July 22 Thurs. THURSDAY EVE HIKE - Broads Fork Trail. We'll stop at the stream where it's cool no matter how hot it is in the valley. Meet at 7 p.m. in the Storm Mountain reservoir parking lot. Join the climbers after refreshments. Bring a jacket. Leader: Dale Green, 277-6417.
- July 22 Thurs. CAVING SECTION MEETING -- Meet Dale Green about 9 p.m. at the table occupied by the climber's refreshments at Storm Mountain Picnic Area.
- July 23-25 Fri. TETONS - MT. MORAN -- In an attempt to avoid the masses which are rapidly turning Garnet Canyon into a dump, and to get away from "mass assaults" common to the Exum Ridge - we're going to Moran. Please call Harold Goodro for details and to register. 277-1247.
- July 24-25 Lodge OPEN HOUSE -- If you do not plan to take to the highways for the long weekend away from the city, come spend the 24th with Helen and Carl Chindgren (467-0922). If enough people are interested, Helen may plan a potluck so, phone in advance for plans.
- July 24 Sat. CAVE TRIP - CACHE COUNTY -- We'll explore caves until everyone is sick of the whole idea. Minimum equipment requirement applies (see June Rambler). Call leader for details. There may be some cable ladder climbing and/or handroping. Register to find out when and where to meet. Transportation - 1¢ a mile. Leader: Dale Green, 277-6417 evenings, or 486-6911 ext 270, work hours. Maximum registration: 12 including leader.

- July 24 Sat. BOX ELDER PEAK - Elev. 11,100 - Rating 9 -- The peak will be approached from the American Fork side. The upper section is quite steep and a little exposed. The summit offers an unsurpassed vista of the most rugged scenery of the Wasatch. Meet at the Alpine turnoff, US Hi-way 91. Register with Leader: Oliver Richards, 484-8097. Time 7:00 a.m.
- July 25 Sun. BRIGHTON RIDGE RUN - Rating 8 -- Starting from Snake Creek Pass, our ridge run will cover seven major peaks, including Pioneer Peak (after all this is Pioneer Day weekend), Tuscarora, Wolverine and Millicent, all over 10,000 feet high. For the experienced, this hike should offer no real problems. Meet at the "Brighton Store" at the beginning of the loop at 8:00 a.m. Leader: Sam Allan, 486-6834.
- SECOND HALF OF JULY -- We plan to visit the La Sal Mountains. The Club did not schedule any activities in that area for many a year and it should be very interesting and enjoyable to go there again. No date has been set yet. For details contact Fred Bruenger, 485-2639 after July 15th.
- July 26 Mon. SIERRA CLUB CHAPTER MEETING 8 p.m., 569 South 13th East. Mr. E. J. (Jake) Garn will make a presentation on the details and problems in managing the 186 square miles of Salt Lake City's watershed. This will be a very valuable and informative meeting which will provide facts and principles to guide us in evaluating the impact of various developments in the Wasatch Front.
- July 28 Wed. ESCALANTE COMMITTEE WORK PARTY - At the Hovingh's, 721 2nd Avenue, Salt Lake City, at 7:30 p.m.
- July 28 Wed. CHILDREN'S HIKE -- Hi Kids! Oh, no, excuse me, I meant you the very, very young adults--, Barbara Lovejoy (278-1002) will lead you up the Dog Lake Circle. Meet at the lodge at 9:30 a.m.
- July 29 Thurs. EVENING CLIMBING AT STORM MOUNTAIN
- July 31 Sat. RED PINE LAKE - Rating 5 -- This is an easy, very pleasant hike into the bowl below White Baldy and a view of the always beckoning Pfeifferhorn. Families are welcome. Meet at the mouth of Little Cottonwood Canyon at 9:00 a.m. Leader: Jackie Thomas, 278-0394.
- July 31 Sat. TOKEWANNA - Elevation 13,175 - Rating 11 -- This peak, close to the Black Fork in the Uintas was visited twice before by the Club. Figure about 3-1/2 hours of driving either way. For the experienced, the effort should not be too taxing, but remember, air is quite thin at that altitude and stress and hypoxia -- as some people experienced -- is not the most pleasant combination. Meet at K-Mart parking lot, Foothill and Parleys Way at 5:30 a.m. Leader: The one who pioneered this hike for the Club - Dale Green, 277-6417

- July 31- NORTHSIDE CANAL KAYAK PRACTICE -- The Northside Canal is the
 Aug. 1 best kayak practice area imaginable. Good waves, right and
 Sat-Sun. left eddies, and warm water all within 200 feet of camp.
 We will stack the bus high with kayaks and leave at 8 p.m.
 Friday night. Contact Dan Thomas, 484-3873. Fee: \$8
- Aug. 1 EXPERIENCE CLIMB - SUNDIAL
 Sun. Call Dave Smith, 266-5229 or 466-2101 to register.
- Aug. 1 MILLCREEK TO LAMBS CANYON -- The route will depend on trail
 Sun. conditions, but a relatively easy hike is planned.
 Meet at K-Mart parking lot, Foothill and Parley's at 8:30 am
 Leader:
- Aug. 5 EVENING CLIMBING AT STORM MOUNTAIN
 Thurs.
- Aug. 5 THURSDAY EVE HIKE - STAIRS GULCH. -- Meet at 7 p.m. in the
 Thurs. Storm Mountain reservoir parking lot. Leader: Dale Green,
 277-6417
- Aug. 6 TIMPANOGOS MOONLIGHT HIKE - Rating 11 -- This moonlight
 Fri. hike was cooked up for the gourmet hiker who expects nothing but the best. The scenery is absolutely prime and the effort well, a gourmet does not look at the price (rating). Meet at the Alpine turnoff of US Hi-way 91 at 6:30 p.m.
- Aug 7-8 ECHO PARK THROUGH SPLIT MOUNTAIN -- We've added this fine
 Sat-Sun beginner-intermediate run for those who want to get ready for Westwater. Teenagers can go along on this one. Leader: Jim McCullough, 466-4061. Fee: Adult \$16, Teenagers \$9.
- Aug. 7-8 KINGS PEAK HIKE -- (one and two days)
 Sat-Sun.
- Aug. 7 DROMEDARY (hike)
- Aug MOUNTAINEERING HIGH CAMP - Paul Horton has agreed to take a group into the Sawtooths for hiking, climbing and/or fishing. As Paul's schedule for Aug. is open no date has been set. Please call Paul to register and to help him select the date.
- Aug. 12 EVENING CLIMBING AT STORM MOUNTAIN
 Thurs.
- | | | | |
|----------|-------------------|----------|-----------|
| Aug. | SNAKE RIVER CANOE | Aug. | WESTWATER |
| 14-15 | | 21-22 | |
| Sat-Sun. | | Sat-Sun. | |



Sundial by Pat King



leaves from the old wasatch

A WASATCH LEGEND

Although the Wasatch Mountains were literally crawling with miners and prospectors in days past, they never played host to that perpetual dream of all who spent their lives searching for mineral deposits; a rich gold mine that might make them wealthy overnight. During the 1890's many gold strikes were reported, such as at the mouth of Little Cottonwood Canyon and at Parley's summit, but most were more fantasy than fact. The reports did cause a wave of gold fever to sweep the area; it was inevitable that a legend of that richest of all rich gold mines would appear. And so it did.

According to the legend the fabulous discovery was made by two deaf-mutes who were chopping wood

in Lamb's canyon and happened upon a ledge that was dripping with gold-producing ore. Although they were not prospectors, they knew enough about minerals to know a good ore when they saw it and within a very short time managed to extract over \$80 in gold using only a blowpipe. Being afraid that news of their discovery would only result in their losing their find, they kept it a secret for over a year. Periodically they returned to the location but were careful to cover the ledge when they left. They had a tree blazed in a peculiar manner that helped them find it again when they returned.

Realizing that their self-imposed secrecy was not allowing them to reap profits from their

find, the two mutes decided to take a mining friend or two into their confidence to help develop the mine. With their splendid ore samples they had little trouble finding help, but each time they started out to reveal the location of their find, they had a change of heart enroute. Their fear of losing everything overwhelmed their desire to develop the mine. And so the secret stayed with them for some time longer.

Finally, however, they entered legal agreements that guaranteed them an interest in the mine. Thus reassured, they again led a party toward the secret ledge of gold, but before they arrived there they discovered they were being followed by two men. Try as they did, they were unable to lose the unwanted followers and so they again returned home without revealing the location. Several weeks later they set out again, but in the meanwhile the area had been swept by a very heavy storm, obliterating every landmark they had used and covering all indications that there was or had been a ledge of ore in the canyon. Although the mutes were satisfied that they were on location, a search revealed nothing more than a ledge of quartz. A location was made, but further prospecting failed to disclose the bonanza that was supposed to be there. The ore the mutes had taken earlier was reported to have been full of gold and would certainly run as high as \$10,000 to the ton. A Salt Lake Herald representative who was shown a sample reported that it was a sight that was good for sore eyes. But the mute's fantastic discovery was destined to become nothing more than a legend, another Leaf from the Old Wasatch.

storm mountain via ferguson canyon

by Kermit Earle

Dave Smith, Steve Cox, Marge Herbury, Mike Hauck, Jack Keuffel, Fred & Evelyn Bruenger, Carl & Nancy Sundeen, John E. Riley, Dixon Smith, Lyman Lewis, and Kermit Earle, all eager outdoor fans, met Leader Gerhardt Henschell at 8:00 a.m. at the mouth of the Big Cottonwood Canyon for a day of fun.

The first leg of the hike was under overcast skies and through the camps of tow parties of nature lovers still in their beds.

We gained the bowl below storm mountain after some minor navigational problems, bushwhacking, light rain, and plain hard work.

I had the thrill of finding a newly born fawn on this part of the trip--this made my day!

After a rest for refueling we continued to the summit. Rock scrambling, we arrived at our destination, meeting Boone Newson who had started late and who was on his way down (he is in shape.) The sun welcomed and afforded us a very comfortable stay with a magnificent view of Happy Valley, and surrounding mountains.

On the way back we did some more trail clearing, taking the trail on the ridge between Ferguson and Big Cottonwood back to the cars.

butterfield canyon

by Monica Karlson

The tiny caravan soared up the small, dusty, winding road of Butterfield Canyon. Here and there, when the wind chased the dust in the other direction, we would get a glimpse of the beautiful canyon, dressed in delicate spring green, below us.

When we reached the "point on the map", we hustled out of the cars and zipped up our parkas. We huddled together to discuss the sanity of proceeding. (It was cold, grey, and windy, with just a patter of rain.) Since Dale was our leader and also wielded an ice ax -- we followed. (Actually, the ice ax was used as a crutch, since Dale was just barely out of his foot cast. We have to admire his fortitude in continuing the hike after he stepped in a "gopher hole" with his freshly-mended foot. Ouch!)

We climbed through mud, trees, and snow. Nothing could prevent us from reaching the peak, not even the rain which formed crystal streams as it ran off our heads onto our shoulders, etc. But the last straw on this ill-fated adventure was hail. (Hail?...sounds good.) It succeeded in beating us down the ridge, back into the protection of the trees. Then it was simply a matter of placing one foot in front of the other...

When we reached the cars we all paused for a moment in the drizzle (including our two canine companions, FuFu and Frieda) and posed for pictures. The attire of a few members was something to behold!

All in all it was a fun hike and next time...we'll go all the way.

Participants: Dale Green (leader); Jan and Tom Boynton; Jack Noy; Grace and Patti Ormsby; Ruth Holland; Carol Greenlee; Elmer W. Boyd; Roberta Elder; Charlie, Tricia and Allison Swift; and Monica Karlson.

Canine Companions: FuFu Ormsy and Frieda Swift.

grandeur moonlight

by Don Colman

By the time we reached Church Forks, our jump-off point, the rain had stopped. The trail was in excellent shape and the temperature cool enough for a really enjoyable hike. We enjoyed the many wild flowers, a few deer, and the view from the summit was spectacular. As we watched the sun set, we could feel the temperature go down. Even "Fifi" the dog put on an extra sweater. The moonlight was so bright that flashlights weren't needed. I overheard people grumbling about moonburn.

I'm sure that many of us wished we could share the wonderful view with all of you who couldn't make this trip.

The lucky hikers that did were: Lauren & Shirlene Williams; Don & Steve Colman; Owen Van Buskirk; Wally Stevens; Ed & Kristi Snyder; Lynn & Connie Frazer; Laury & Mary Bowden; "Fifi" the dog; and Able Leader Kermit Earle. We thank Kermit for a most pleasant evening.

conservation comments 1971

by Shep Bloom

Regarding our forthcoming meeting
July 14-----

Since the last correspondence from yours truly, the Conservation Committee has had some reason to re-think its position on our overall conservation objectives. Many of our members have expressed the opinion that our conservation activities should be more directly related to the geographic areas which the Club uses most. Namely, the Wasatch Mountains and the rivers we most frequently run. In addition to the kinds of things we should concentrate on, there is the question of how we do our concentrating. Foremost along this line is when, how, and through whom are "official" WMC positions stated to the news media, governmental representatives, or anyone else who happens to be listening. We would like to formalize the procedure by which such positions are arrived at. Actually, the procedure is spelled out in our constitution, but it needs open discussion.

In addition to these general statements, we will spend some time at the meeting discussing each of several specific problems, such as the Rainbow Bridge litigation, possible developments in the Wasatch Mountains, the current status of the Escalante area, and the proposed High Uinta Wilderness area. Three specific items will be presented to the Membership for voting, in the form of resolutions. These are:

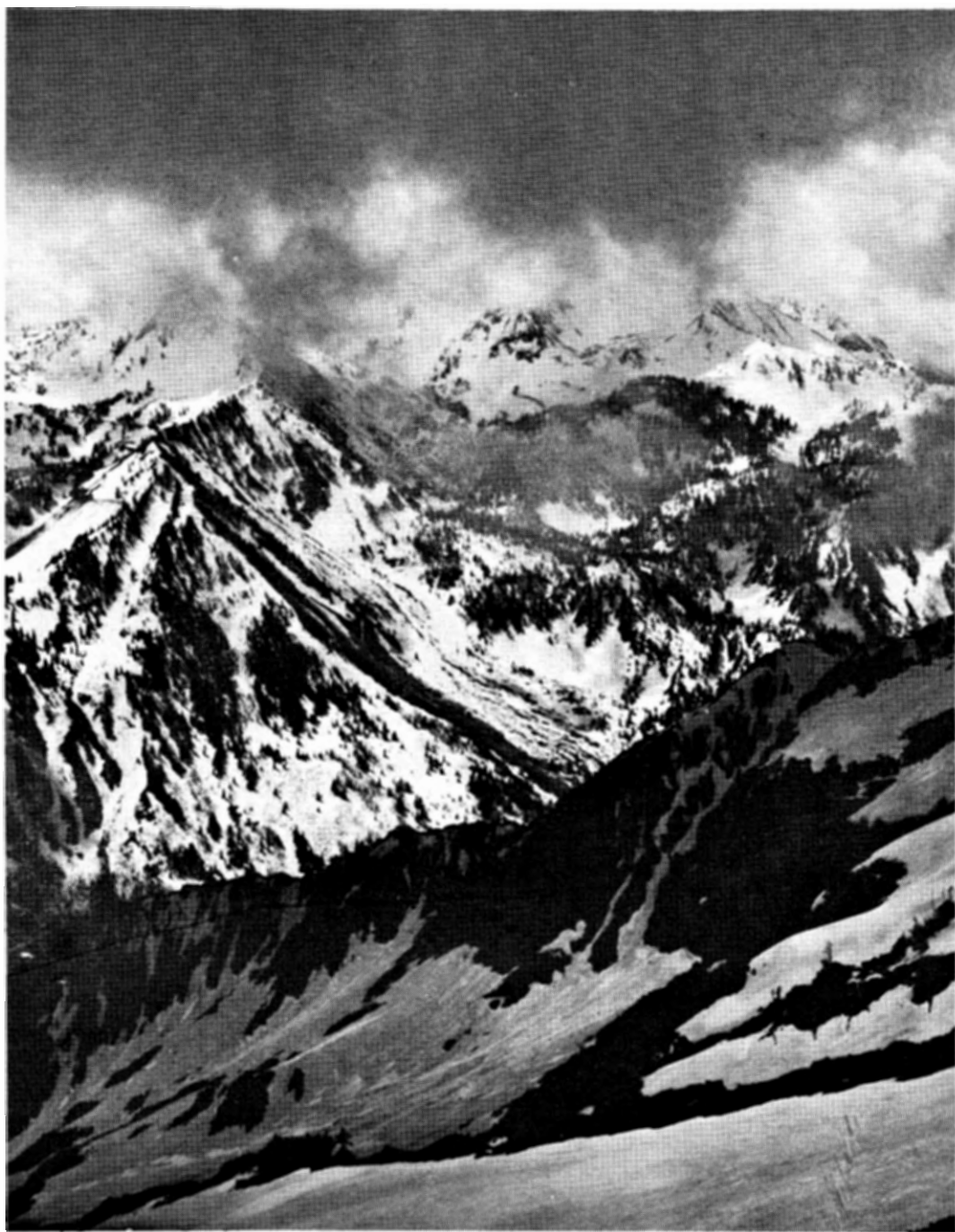
- 1) It is resolved that the Wasatch Mountain Club will not henceforth engage in any litigation without the consent of the membership, obtained by majority vote at a General Membership meeting.
- 2) It is resolved that the Wasatch Mountain Club supports the expansion of the High Uinta Wilderness Area, as presently proposed by Senator Moss, insofar as we currently understand that proposal.
- 3) It is resolved that the Wasatch Mountain Club supports the concept of a Lone Peak Wilderness Area.

Additional resolutions can be submitted. If you wish to introduce another resolution, please communicate with me as soon as possible. See you July 14, 7:30 p.m. at the Lodge.

cave exploring section

by Dale Green

Next October I plan to hold a Cave Exploring Class similar to the Beginning Climber's Class. There will be a lecture (a repeat of the introductory meeting of April 16) and three practical "learn by doing" sessions. Because of time limitations I plan to concentrate only on those subjects unique to cave exploring which means participants must have some experience and/or instruction in regular mountain climbing. You must know knots, belaying, rappelling, and hardware to enroll. Failure to take the class will not bar you from many (maybe a third) of the cave trips. However, the class will qualify you for virtually everything. Most experienced climbers are probably already qualified but might profit by some of the practical experience underground. Beginning cavers who want to qualify should start getting in some practice climbing this summer.



mt superior from alta

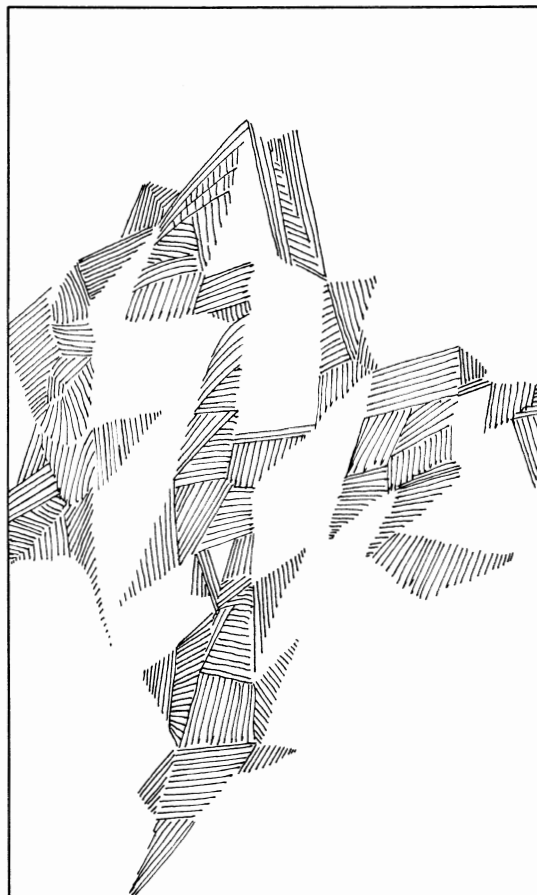
by Suzanne Budd

We didn't take Cardiff Pass as planned, but started up a thick blanket of snow at the base of Superior. Plenty of rock-scrambling provided a good variety much of the way and loose rolling rocks did their best to wipe us out. The massive Snowbird stretched itself out before us as we climbed.

We stopped near the summit, cursing thick, grey clouds, wind, and fog for blocking out the sun and decided, because of an unusually heavy amount of snow remaining on the steep ridges, to bypass the peak and head down toward Lake Blanche. The snow was mushy, but we found several steep and lengthy slopes where we could test our withering ski form.

It was a wet and shivery lunch for us, with covetous glances at mountains enjoying little patches of sun. Lake Blanche was beautiful in her calm, silent awakening. As we scrambled down our last half mile, the sun finally burst down upon us.

Hikers were: Greg Doxey; Chuck Mays (who both returned down Superior to Alta); Mike Hauck; Jackie Thomas; Oscar Robison; John & Margaret Mosley; Ruta Dreijmanis; Suzanne Budd; Pat King; Mary Jo Sweeney; Don Colman; Harold Goodro; Karen Carlston; Lyman Lewis; Steve Swanson.



We commend the
Wasatch Mountain Club
for its
unyielding efforts to
protect and preserve,
in pristine splendor,
the most spectacular
Real Estate on
EARTH.

Sam Allan 486-6834
JACK R. LEE & CO REALTORS

utah environ- ment center

1247 Wilmington Ave. 467-0433

Almost concurrent with the recognition that Utah is not immune to the environmental problems that plague the Nation was the recognition of the pressing need for a foundation that would serve as a catalyst for interaction among groups dedicated to solving or minimizing those problems. If concerned Utahns are to play an effective role in circumventing the looming eco-catastrophe, it is imperative that there be an organized means of disseminating the explosion of environmental information. To meet these overriding general needs, the Utah Environment Center at 1247 Wilmington Avenue was recently established (467-0433).

More specifically, the Center will fulfill the following needs:

1. It will passively serve as a central resource facility available to all who are interested in the multi-faceted aspects of environmental problems.

2. It will actively serve as an information distribution center to inform member organizations of current problems and events, including the environmental activities of its co-members. This will enable the various groups to co-ordinate their activities and offer mutual support.

3. It will maintain a master calendar of events such as:

- A. Public Hearings
 1. National
 2. State
 3. Local
- B. Club Programs and Meetings

4. It will maintain a library, available to the public, consisting of:

- A. Books
- B. Magazines
- C. Environmental Law Publications
- D. Government Publications
- E. Pamphlets, Newspaper Clippings, et al.
- F. Slides

5. It will maintain a speakers' bureau.

6. It will provide duplicating and printing facilities to all member organizations.

7. It will provide meeting space for its member organizations committee meetings.

8. It will publish a newsletter.

The Utah Environmental Center, a tax free foundation, is controlled by a Board of Directors comprised of representatives from its member organizations. At its inception, it filed its Articles of Incorporation with three directors. They are Paul Salisbury of the Sierra Club,

Stewart Harvey of the WMC, and Scott Harmon of the Westminster Ecology Center. The League of Woman Voters, an original participating organization, has still to appoint its board member. The Center will be staffed by one full-time paid person who will appoint such voluntary assistants as are deemed necessary, subject to the veto of the Board of Directors.

Contact Noreen Ogden, UEC Secretary (467-0433 or 277-4387) or June Wickham, 328-1972, if you can volunteer.

1. Furniture...we need a desk, chairs, work tables, and bookshelves.
2. Your services. We need volunteers to staff the center on a regular basis, two hours each week.

geology tour of the wasatch

by Dale Green

Our tour started at Parleys Canyon where Prof. Eardley described the folding and tilting from the intrusion to the south and the uplift on the north. Several stops later, in City Creek Canyon, we saw the remains of an old volcano and beach deposits of Lake Bonneville. After viewing the amazing Wasatch Fault exposures in the gravel pits at Warm Springs, we drove to the mouth of Little Cottonwood where the effects of glaciation and faulting are so graphically shown. Unfortunately the bus was inoperative so all of us didn't get Prof. Eardley's running commentary which adds much to the tour. However, I'm sure everyone along joins me in thanking Prof. Eardley for his fine lecture.

If anyone is interested in the geology of the Wasatch but could not attend the tour, I recommend the guidebook "Geology of Salt Lake County", Bulletin 69 of the Utah Geological and Mineralogical Survey. The price is \$2.50. A complete geologic map of the county is included but can be purchased separately for \$1.00. The Survey's office is just east of the Naval Science Building on First South on the U. of U. campus. Much of the local Wasatch is also mapped in much greater detail by the U.S. Geological Survey on 7.5 minute quadrangles for \$1.00 each. These are available from the Public Inquiries Office on the 8th floor of the Federal Building. If you're interested in the Uintas. I recommend the U.S.G.S.'s Bulletin 1291, "The Geologic Story of the Uinta Mountains" (\$2.00). This booklet is the most readable explanation of a geological story I've seen. Written expressly for the layman it is a virtual textbook in addition to giving an excellent description of the history of the Uintas.

upper dolores

There we were, all ready to load the bus when suddenly our leader, Fred Bruenger, comes rushing up shouting "don't load anything". Then he tells us the sad news--not enough water in the Upper Dolores. We will run the Colorado above Moab instead. Who would like to cancel? Would you believe not one solitary soul?

Our trusty bus and drivers got us to Moab at the early hour of 2 a.m. Since sleeping accommodations on said bus were just a mite crowded, we all unloaded our gear and bedded down on a very choice dirt parking lot!

At 6 a.m. we were awakened by our leader dropping pebbles on our heads. Into the thriving metropolis of Moab for a really good breakfast. And on the road again to the river.

We put in below Dewey Bridge and suddenly life was good. The sun was shining, the river gleaming golden brown, the air fresh and no one around but our group.

The day was very pleasant. The current moved along at a good rate, there were a few fun rapids (whets one's appetite for bigger ones). We stopped on a sandy shore and ate lunch. Then, back into the boats and on down the river. Disembarked about 5 on a big sandy (windy) beach. All in all, a lovely day.

We all gave our immediate attention to happy hour, followed by dinner. Shep Bloom put on an entertaining act concerning a paint

can full of stew being emptied into a much smaller cooking pan. At some point in this time, it was decided that a moonlight cruise was in order. Consequently, two boatloads of stalwart souls pushed off around tenish.

Night boating was absolutely different than day. One felt the boat and its occupants were the universe. Of course the other boat was close at hand and at one point we had a rather spirited exchange, our one casualty being our captain Bob Everson who was most foully dragged overboard.

So on we paddled with the cliffs rising still and enormous around us. We were enjoying a very rousing songfest with all manner of little goodies being dredged out of our respective pasts when lo and behold, the Moab Chamber of Commerce appeared with their "controlled illumination" of the cliffs, river, and whatever. They seemed a bit discombobulated at finding us on the river and tried intimidating us with their searchlights. We retaliated with our trusty flashlight and a few rousing cheers and felt that we had carried the day. Son, on to the bus waiting for us in Moab to return us to our campground.

Next morning Fred Bruenger gathered us round and we voted on how to spend the day since, alas, we had run out of river. Onto the bus and into the strange beauty of Arches National Monument. The landscape was starkly magnificent towering monoliths brooding on a desolate world. Yet not all desolation, the cactus were bright clumps of yellow and red. When one looked around, the amount of flora was surprising and very beautiful.

And once again onto the bus and the drive back to Salt Lake City. Lunch, (?) tea, (?) dinner (?) what-

ever, was partaken of on the bus with some rather strange combinations occurring (peanut butter sandwiches and stuffed olives).

Around 9:30 (yes, 9:30 p.m. Sunday evening!) we found ourselves back at the ice house, the roar of civilization once again on all sides.

All in all, a lovely trip. So hurry up Yampa--I'm ready.

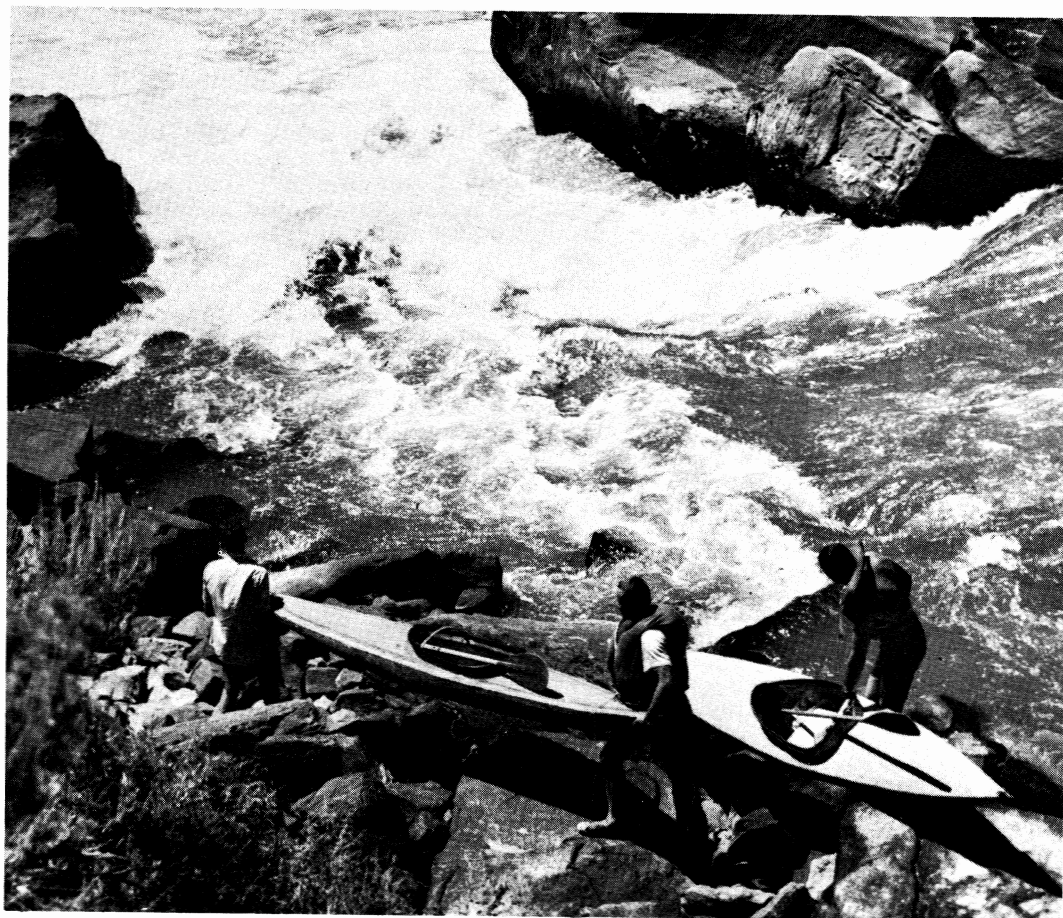
Cast of Characters:

Leader: Fred Bruenger

Captains: Ed Cook; Bob Everson; Lloyd McMahan; Jim Hathaway.

Kayakers: Jim & Dotty Byrne; Dan Thomas; Fred & Eveline Bruenger; Shep & Miriam Bloom; Benita Jackson.

Boaters: Larry Kremer; Ruth Henson; Monica Karlson; Susan & Dan Sternberg; Jann Jennings; Roberta Elder; Max & Susan Reese; Henry & Sylvie Gouraud; Gayle Campbell; Russell Patterson; Bob Cook; Jayne & Jayne James; Barbara Brown; Paul Horton; Rob Snyder; Marilyn Hathaway.



motorcycle hearing in heber city

by Dave Raskin

On June 1, 1971, my wife and I attended a public hearing in Heber City concerning a proposed development of a motorcycle and snowmobile racecourse in the Wasatch Mountain State Park. The meeting was conducted by Harold Tippetts, Director of the State Parks and Recreation Division, and approximately 150 local residents and property owners attended the hearing at the Wasatch County Courthouse.

After a brief and very sketchy presentation by Mr. Tippetts of the general nature of the proposed development by concessionaire Don Blumenthal of CBC Utah, the floor was opened for statements by those in attendance.

A great many individuals spoke out against the proposed development, including Wasatch County State Senator Clyde who represented a petition signed by many local leaders including County Commissioners, City Council members, and numerous individuals representing commercial, agricultural, business, and professional organizations, and private property owners. Others pointed out many of the adverse effects of such a development in the Park including noise, fire hazards, sanitation problems, law enforcement problems, damage to the watershed, interference with winter range of

deer and elk herds, containment of the vehicles on the designated trails and within the designated area, and the lack of a suitable amount of snow for the operation of snowmobiles! Even the State Division of Fish and Game spoke out against the development which would have driven out the deer herd and a newly re-established elk herd, and would have usurped the area in which Fish and Game has been obtaining extremely valuable information on deer winter feeding since 1957! All of this in addition to turning over 4200 acres (almost 1/5 of the entire park) to the operations of motorized vehicles.

Mr. Don Blumenthal made a presentation outlining the details of his planned development. He claimed to have letters of endorsement from numerous sources including Royal Street Corp., the new owners and developers of Park City Ski Resort. When asked to read the aforementioned letter of endorsement, it became obvious that Mr. Blumenthal had deliberately misrepresented the content of that letter since it contained nothing which could be construed as an endorsement of the project. In addition, Mr. Blumenthal claimed that noise would not be a problem since it would not escape from the confines of Dutch Hollow where the vehicles would be operated. When asked for facts to support that assertion the persistent questions clearly showed that no noise survey has been made, and there was no support for his assertion.

The serious misrepresentations along with numerous other facts brought out by those in attendance made it very obvious that there had been very little investigation and planning with regard to the entire project, and there

were very serious violations of the basic environmental safeguards and protection of individuals' rights which I had previously stated were a necessary part of any such development. Therefore, I went on record as opposing any such development in the Wasatch Mountain State Park.

I feel that some valuable lessons were learned at this hearing. First, I was told by reputable people in Wasatch County that the attempt was made to go ahead with the proposed development by dealing directly with local officials, thereby avoiding a public hearing and the obvious local opposition which was the inevitable result of such a hearing. If true, such behavior on the part of an agency of the state is reprehensible and should be decisively stopped by public action and pressure.

Second, it is obvious to me that any such proposed motorcycle and snomobile development will run into strong opposition by local residents in any area of the state in which it is proposed. This is because the vehicles and the ways in which they are frequently operated are basically destructive and produce unacceptable amounts of noise and air pollution. Until legislation is enacted which requires noise suppression devices on motorcycles and snomobiles such as are standard equipment on automobiles, 4-wheel drive vehicles, and many motorcycles, there will be no general public acceptance or the development of areas for their operation. I see no reason (except for pressure by off-road vehicle groups and the complicity of the State Parks and Recreation Division) why such vehicles should not be required to meet the same standards currently imposed upon

the operation of automobiles, namely mufflers and air pollution control which would be greatly solved by a ban on 2-cycle engines. It is my understanding that we do not have such legislation because the officials have responded to pressure to keep such provisions out of the off-road vehicle legislation passed by the last legislature.

Third, there is an obvious and continuing effort by the State Parks and Recreation Division to locate one or more of these developments inside an existing state park. This, in spite of the fact that the licensing fees derived from off-road vehicles are specifically designated to provide funds for the establishment of such developments. Rather than use the funds for purchase of lands most suitable for vehicular use, Mr. Tippetts seems determined to put the vehicles in state parks where they will probably produce the most disruption and damage.

Finally, it seems clear that Mr. Tippetts is determined to satisfy the demands of the motorcyclists without due regard to the problems involved and the wishes of the large majority of citizens. For example, the advisory committee to the state parks in regard to off-road vehicles is composed of three representatives of off-road vehicle groups, one rancher and one conservationist. This is a rather lopsided group. It is going to be an uphill battle to convince Mr. Tippetts that adequate safeguards and legislation to protect the environment and the rights of others are a necessary prerequisite to any such developments. We must demand a more responsible approach on his part if we are to protect those resources and activities which we value most highly.

news and notices

NEED PHOTOGRAPHS FOR RAMBLER

Do you have interesting black and white photographs from hikes, climbs, river trips etc.? If so, please get in touch with Ruta Dreijmanis (262-1693--late evenings!).

JUSTICE DOUGLAS LECTURE

The Utah Civil Liberties Union (Utah affiliate of ACLU) takes pleasure in announcing that Justice William O. Douglas will be guest speaker at its annual dinner meeting October 1, 1971 at the University of Utah Union Ballroom. Justice Douglas is widely known for his staunch defense of civil liberties and the environment.

HATCHED

Alex Tremain Nelson on June 1, 1971 by Phil and Sally. Weighed in at 9 lbs. 10 oz.

THANKS

... to June and Tim Viavant, Sally and Phil Nelson, Linda and George Rathburn for mailing the June RAMBLER

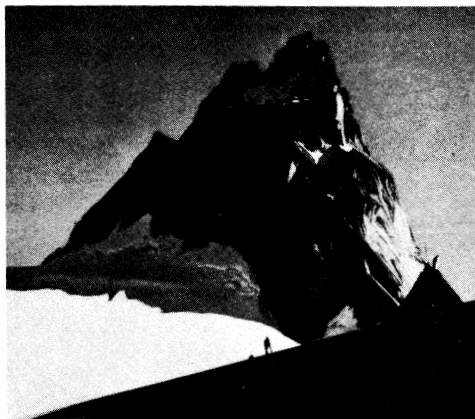
... to Jane Daurelle and Rose Morrison for typing this months issue.

DEADLINE

for the August Rambler is July 15th and no later. Please, please, please have your articles and schedules TYPED and mailed or delivered to Ruta Dreijmanis, 5396 Willow Lane, Apt. C, Murray, Utah 84107, 262-1693

SIERRA DESIGN-CMI NORTH FACE - LOWA GALIBIER-VOYAGEUR CHOUINARD - KELTY DOLT

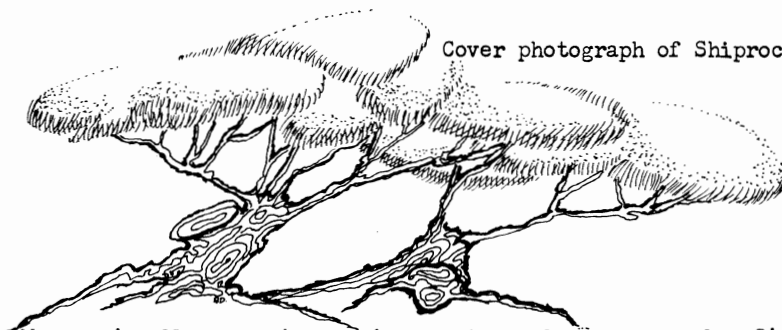
Specialists in lightweight backpacking, mountaineering and ski touring equipment.



TIMBERLINE SPORTS

2959 Highland Dr. 466-2101

HOURS: Monday-Thursday 12:00-8:00 pm
Friday 12:00-9:00 pm / Saturday 10:00-6:00 pm



Cover photograph of Shiprock by Dan Lynch

Wasatch Mountain Club business is conducted only on the first and third Wednesdays of each month. At that time, and only at that time, is the mail opened, new membership applications voted on, dues payments recorded, address changes made, and all other business requiring board action conducted. All board members cannot attend all board meetings and although an effort is made to fill in during a member's absence, some business is held for action until the next meeting.

WASATCH MOUNTAIN CLUB

2959 Highland Drive, Salt Lake City, Utah 84106 Phone: 363-7150

APPLICATION FOR MEMBERSHIP

To the Board of Directors:

I hereby apply for membership in the Wasatch Mountain Club. I enclose the \$4.00 entrance fee and \$6.00 dues (spouse \$3.00). I have attended 2 outings (hikes, ski tours, cave trips, camping trips, rock-hound trips, work parties) and am genuinely interested in the out-of-doors. (Please note that social events (lodge parties, ski socials, etc.) are not included in the definition of outings.) I agree to abide by all the rules and regulations of the Club as specified in the Constitution and By-laws and as determined by the Board of Directors.

Name (print)_____	Outings attended: Date
_____	1. _____
Signature _____	2. _____
(If spouse membership please print name of spouse)_____	Recommended by: Member: _____
Address _____	Director: _____
City _____ State _____	(Please note: you must have the above signatures before your application can be presented to the Board of Directors.)
Zip _____ Phone _____	(Effective June 15 to August 31, 1971)

WASATCH MOUNTAIN CLUB, INC.

2959 Highland Drive / Salt Lake City / Utah 84106

BULK RATE
U. S. POSTAGE

4 ¢ PAID

SALT LAKE CITY, UTAH
PERMIT NO. 2001

Address Correction Requested / Return Postage Guaranteed

BOARD OF DIRECTORS

<i>DENNIS CALDWELL, President</i>	278-2100
<i>DENNA WRIGHT, Secretary</i>	272-1177
<i>CHARLEY SWIFT, Treasurer</i>	277-2267
<i>JIM BYRNE, Boating</i>	359-5631
<i>SHEP BLOOM, Conservation</i>	277-3079
<i>DIANA SCHOENBERG, Entertainment</i>	278-4896
<i>FRED BRUENGER, Hiking</i>	485-2639
<i>PHIL BERGER Lodge</i>	322-1873
<i>JUNE ZONGKER, Membership</i>	262-7092
<i>DAVE SMITH, Mountaineering</i>	266-5229
<i>RUTA DREIJMANIS, Publications</i>	262-1693
<i>DAVE GEORGE, Ski-Touring</i>	364-7025
<i>DAN THOMAS, Transportation</i>	484-3873