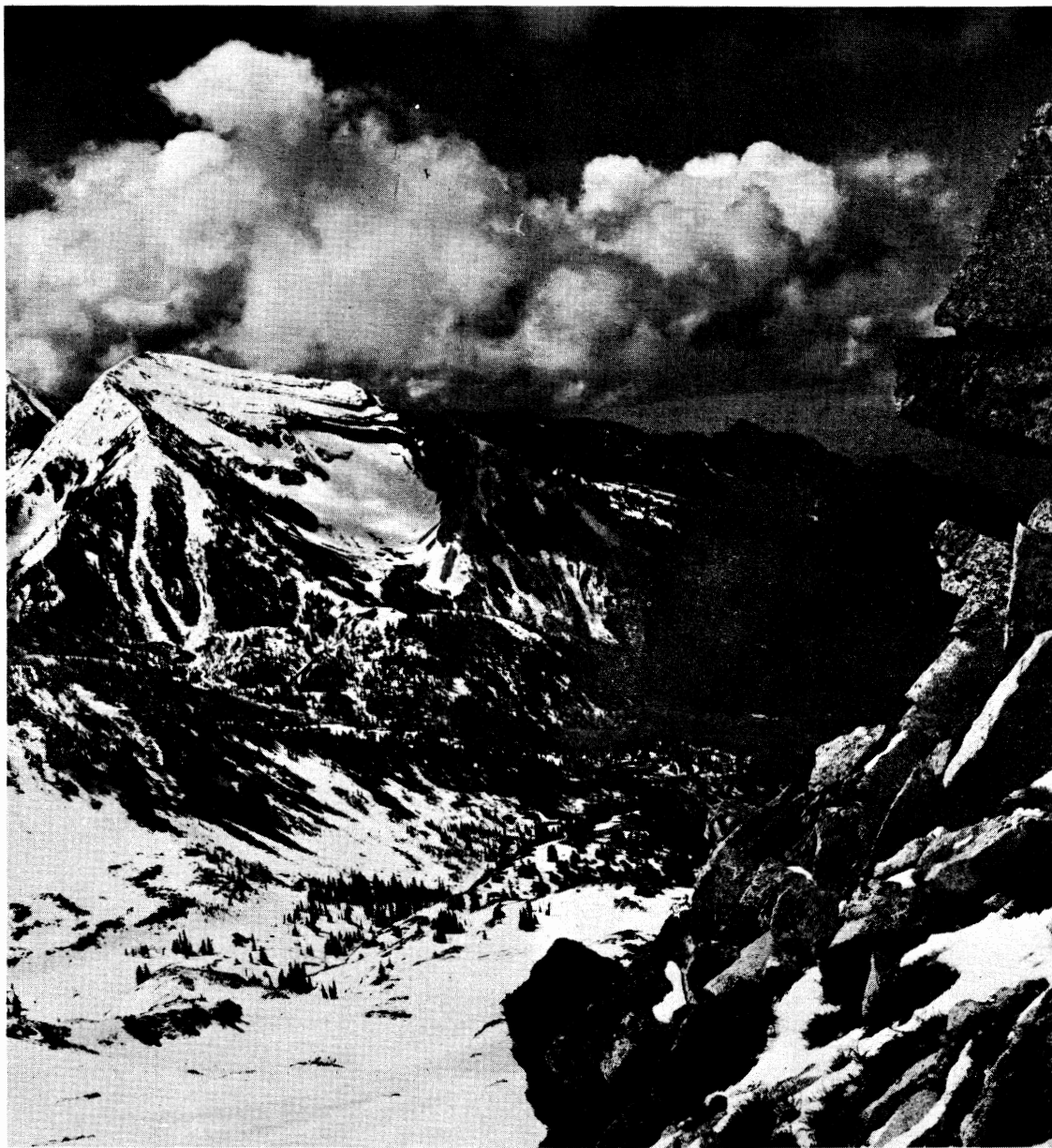


The Rambler

JANUARY 1972



Official publication of THE WASATCH MOUNTAIN CLUB Salt Lake City, Utah

club activities for jan 1972

REGISTRATION INFORMATION: Registration is generally not required for members participating in easy or intermediate hiking (Rating below 7.0). Unless specifically stated, advanced hikes (Rating above 7.0) require registration

with the leader. Adequate equipment is an absolute must. You cannot participate in these events if you have not shown your ability on other hiking activities and if you do not have adequate and well broken in boots with good Vibram type soles and suitable protective clothing. Special equipment like an ice axe etc. may also be specified and you are required to be able to handle such equipment. Remember that these restrictions are set for your own safety and that of your fellow members. For rules regarding participation of children consult the May Rambler. Register for bus trips with the leader only by sending a deposit to the address listed. Leaders cannot register anyone without a deposit.

For bus trip cancellations less than a week prior to the trip, the Club must retain a \$5.00 registration fee.

- Dec. 31
Fri. NEW YEARS EVE PARTY - It's party time again! Let's do it the WMC way! Everyone can do their own thing! Fun, relaxed atmosphere! \$3.50 members, \$5.50 non-members includes at least four drinks, dancing, refreshments, light snacks and trimmings to make this a memorable experience. Fun begins at 9:00 p.m. at the Lodge. Plans for the orchestra may require a slight addition to admission price. Plan to stay overnight and enjoy skiing the next day. Call before Dec. 28, Wilma McElhaney, 364-9206.
- Jan. 2
Sun. LAKE BLANCHE FROM ALTA - Expert -- this is a classic tour but only strong skiers should attempt it. We travel over some very steep terrain and the downhill section is quite challenging at times. The lower portion of the tour is tight but enjoyable brush skiing and not very easy. Please, no nordic skis without prior permission from the leader. Registration necessary and due before Jan. 1st please. Leader: David George, 364-7025.
- Jan. 5
Wed. SNOWSHOE TOUR - The destination will be determined by the ambitions of the party. Call Ross for details. A 1:00 p.m. start is anticipated. Leader: Ross Pearson, 486-0455.
- Jan. 8
Sat. AVALANCHE SCHOOL - This school is almost a must for ski tourers. We will have a morning session devoted to the theory of avalanches and avalanche rescue. A film will be shown by

the U.S. Forestry Service personell to illustrate the rescue technique necessary to find buried victims. An afternoon session will be conducted to simulate avalanche rescue techniques in the field. We hope to hold both sessions at Alta but if avalanche conditions close the road we will hold the morning session at Alexis Kellner's. Registration fee \$1.00. Call David George, 364-7025 for more details.

- Jan. 8 LOGAN CAVE - Utah's most accessible large cave; only 50 feet
Sat. from the highway. No special equipment or skills required but the leader feels strongly that your safety and enjoyment will be greatly enhanced by wearing a hard hat and head lamp, available for rent from the club for \$1.00. Call the leader for details or read the caving article in the June 1971 RAMBLER. Meet at 9:00 a.m. at the south side of the Salt Lake City Public Library, 5th South and 2nd East. Transportation charge \$1.50. One way driving time: 1-1/2 hours. Leader: Dale Green, 277-6417 (Please call between 9 p.m. and 11 p.m.).
- Jan. 9 FIRST AFTER-SKI SOCIAL - Denna and Bob Wright have bravely
Sun. volunteered to host the first after-ski social. You don't really have to be a skier to attend--all are welcome! Come about 6:00 to enjoy the company, the fire, a drink, and supper. 3033 East 5800 South.
- Jan. 9 RED PINE-PFEIFFERHORN-ALPINE - Expert - This seldom-run tour
Sun. takes us up Red Pine Canyon to the pass, then up the Pfeifferhorn and finally down the south facing slopes below the Pfeifferhorn to the town of Alpine. Registration required. Leader: Dennis Caldwell, 278-2100
- Jan. 9 SNOWSHOE TOUR - LAKE DESOLATION VIA MILL D NORTH - This
Sun. enjoyable tour runs through wooded hills and is both beautiful and free of avalanche danger. Skiers will also enjoy this trip, but be sure to bring climbing skins or Nordic Skis. Meet at the mouth of Big Cottonwood Canyon, 9:00 a.m. Leader: Elmer Boyd, 298-5537
- Jan. 12 GRAND CANYON - Call George, 266-2993, or Ruth, 272-3343,
Wed. about the Grand Canyon river run!
- Jan. 12 ESCALANTE WILDERNESS COMMITTEE BUSINESS MEETING, 721 Second
Wed. Avenue, Salt Lake City, 7:30 p.m. Phone, 359-4791
- Jan. 15 SNAKE CREEK PASS-BEGINNER - Plan on enjoying this leisurly
Sat. tour with us, bring a lunch and plan on sunning at the pass. Snowshoers and nordic skiers are welcome. Meet at the mouth of Big Cottonwood Canyon at 10:00 a.m. Leader: Mel Davis, 278-3174
- Jan. 15 NOMINATION BANQUET - Don't miss the one and only dressy out-
Sat. ing of the year. Come with or without dates to the Beefeaters Inn, 2903 Highland Drive. Social hour 6:30 - 7:30. Dinner 7:30 p.m. The nomination committee will present a slate of

candidates for 1972. Price per person, excluding drinks \$5.50. Prime Rib or Top Sirloin Steaks will be served. Set-ups and dancing included. BYOL. Please register with Denna Wright, 272-1177 or Odel Petterson, 363-7150 before 9:00 p.m. Jan. 13th.

- Jan. 16 BRIGHTON TO PARK CITY WEST OR BEYOND - Intermediate. This is
Sun. a new tour and is probably best suited for nordic skis. The
tour will be rather long and must be limited to ten people.
Register with Milt Hollander, 278-1416.
- Jan. 16 SNOWSHOE TOUR - MINERAL FORK -- This is an enjoyable trip to
Sun. one of the less travelled side canyons of Big Cottonwood. If
luck is with us the snow machines will not have made it very
far this year. This is a good beginner ski tour and quite
enjoyable on nordic or alpine skis as well as snowshoes. Meet
at the mouth of Big Cottonwood Canyon at 8:30 a.m. Leader:
Shelly Hyde. No registration is necessary.
- Jan. FREE LODGE WEEKEND - Lodge open to members for skiing, relax-
22-23 ing? Bring your own sleeping bags and food. Contact Dan and
Sat.Sun. Barbara Lovejoy, 278-1002 for details. Lets take advantage
of these weekends to use our lodge.
- Jan. 22 DAYS FORK FROM ALTA - Expert or very strong intermediate -
Sat. This trip runs through some of the best skiing terrain in the
Wasatch but the avalanche danger can be high at times. We
approach the Days Fork cirque from Alta by climbing to the
top of Flagstaff Peak. The run down to Big Cottonwood Canyon
is spectacular and fast. Car spotting is necessary, so be
on time. Meet at the mouth of Big Cottonwood Canyon at 8:30
a.m. Leader: Dave Hanscom, 487-6065
- Jan. 23 HONEYCOMB FORK - Beginner-Intermediate -- By taking the Ever-
Sat. green lift about half the vertical rise can be eliminated.
We cross into the Silver Lake drainage and then proceed up
to the divide between the Honeycomb and Twin Lake Cirques.
Enjoyable skiing can be found as one proceeds down to Silver
Fork. Strong snowshoers can easily manage this trip but the
head of Honeycomb Fork is steep. Meet at the mouth of Big
Cottonwood Canyon at 8:30 a.m. Leader: Oscar Robison, 272-0174
- Jan. 23 AFTER-SKI SOCIAL - Fun and food await at the home of Louise
Sun. and Milt Hollander, 2561 Valley View Avenue. Come around
6:00 and bring the following directions with you.
Turn East off Holladay Blvd. onto Valley View (4810 South).
Park your car on Valley View before proceeding. Go one block
to 2555 East and walk North on the lane to the end. Walk past
the "No Trespassing" sign and over one bump. Turn right and
walk East over two more bumps. Then turn left and you're in
the yard (we hope). Remember, it is essential that all cars
be parked on Valley View Ave. --"Caution! Do NOT
take any DRINKS until AFTER you have followed the above
directions!"

- Jan. 24 SIERRA CLUB MEETING - 569 South 13 East. Gene Day of the
Mon. Planning Department of the B.L.M. will discuss plans for re-
8:00 pm creation developments and classification of areas in Utah.
This is an opportunity for us to become aware of B.L.M. plans
in their formative stages so that we can make inputs and
cooperate with them to serve our mutual interests.
- Jan. 26 ESCALANTE WILDERNESS COMMITTEE STRATEGY SESSION - Help in the
Wed. planning of goals for 1972, namely to get S27 through the
House to include the Escalante drainage into Glen Canyon
Recreation Area. 7:30 p.m. 721 2nd Avenue, Salt Lake City.
- Jan. 28 MOONLIGHT TOUR WHITE PINE CANYON - Beginner, Nordic, Snow-
Fri. shoers. Hopefully the weather will be clear for this trip.
If so, we will tour up the road into the upper area of White
Pine. The more ambitious can continue up to get some fine
powder skiing. Meet at the Mouth of Big Cottonwood Canyon.
at 7:30 p.m. Leader: Dave Smith, 467-9163
- Jan. 29 AMERICAN FORK TWINS - WHITE PINE -- Expert. We will take
Sat. the Sugarloaf lift to Germania Pass and then drop into Ameri-
can Fork Canyon, a short traverse to the base of American
Fork Twins and then we can take off our skis and climb to the
summit. The timid may want an ice axe. The run down White
Pine is very enjoyable and some good powder can probably be
expected. Meet at the mouth of Big Cottonwood Canyon at 8:30
a.m. Leader: Ron Weber, 467-3187.
- Jan. 30 BUTLER FORK TO MILL CREEK (PORTERS FORK). This rather long
Sun. tour has a wonderful view of the Lake Blanche-Twin Peaks area.
The route goes up and then drops into the east fork of Porters
Fork. We have to spot cars, so be on time. Meet at the
"Movie" 39th and Wasatch Blvd. at 8:30 a.m. Leader: Ross
Pearson, 486-0455.
- Feb. WASHINGTON'S BIRTHDAY WEEKEND - TAUGEE. Our skierized bus
19-21 will depart Friday night for the Traditional Teton Weekend.
Sat/Sun/ Six to a room and community cooking should provide a con-
Mon. genial atmosphere at the very least. Bus and lodge space is
limited, so register as soon as possible. A small but sincere
deposit of \$5 is required. More details in February RAMBLER.
Lodging and transportation in the vicinity of \$25. Phone:
Dan Thomas 484-3873 or Ruta Dreijmanis 272-1412.
- Mar. SUN VALLEY WEEKEND - Register by February 23rd. Jackie
4 - 5 Thomas, 278-0394.
- April VAIL or ASPEN



leaves from the old wasatch

Big Cottonwood Names

Since a Place without a name is
hardly a Place at all, most people

who frequent an area soon learn the names of the prominent, and perhaps some of the less prominent points of interest. Names are usually accepted, with little thought as to their meaning or derivation. All too often their origin is lost in the dim past, but a few names still can be traced back to their donors.

In Big Cottonwood Canyon the most noticeable names have been passed down from the Big Cottonwood Lumber Company's mills, giving us Mill A Fork, Bill B. Fork, etc.. Many other names are the result of mills that were privately owned and operated. A short distance above Storm Mountain is Whipple Fork, draining the north side of the canyon. With his sons he built and operated several sawmills, one of them at Whipple Fork in 1874. Whipple probably drew his source of timber from the fork above his mill. As was the custom in those days, when a man opened a road into a canyon or fork, usually to gain access to its timber, he was assumed to have rights to charge tolls for the use of his road and the lands it opened. And he usually donated his good name. For this reason we have Neff's Canyon, Lamb's Canyon, and even Parley's Canyon.

Maxfield Basin most likely provided timber for John Maxfield, who had a sawmill in Mill A Gulch, and whose sons started the Maxfield mine in the same locale. Maxfield sold his sawmill to Phylander Butler, who ran it for a short time before it was destroyed by a snow avalanche. Alva Butler and Neri Butler also were active in the sawmill operations in the canyon; the latter was supposed to have built a mill in the watercourse known today as Butler Fork.

Farther up the canyon, Ammon Reynolds built a cabin on the north side of Mill G Flat, and gave his name to Reynold's Gulch. Mill G Flat, incidentally, once was known as Taggart Flat after a man of the same name who, with his wife and three children, was killed when his badly located cabin was destroyed by a snow avalanche.

High on the south side of the canyon, between Silver Fork and Day's Fork, are two watersheds known as Green's Basin and Matt's Basin. Matt Elleson had a small water-powered sawmill below Silver Springs in the 1880's, and Alvin Green had another mill a short distance below Elleson's. Both men got their timber high on the south slopes; they slid the logs down the hill to their mills, but left their names up above.

Beartrap Fork was supposed to have been a favorite place for trapping bears. One early visitor to the canyon, in 1860, mentioned seeing a trap on the north side some distance above Mill D. It was, he wrote, a dwarf hut, with one or two doors, which fall when Cuffy tugs the bait from the figure of 4 in the center.

We know that Frederik Kesler was one of the more prominent sawmill builders in the canyon, having built most of the Big Cottonwood Lumber Company's mills. Could it be he left his name behind on one of the more prominent natural features in the canyon - Kesler Peak?

These are but a few of the names we use and know. They are names that once were assigned by someone or for someone, and have endured to come drifting down out of the past - like Leaves from the Old Wasatch.

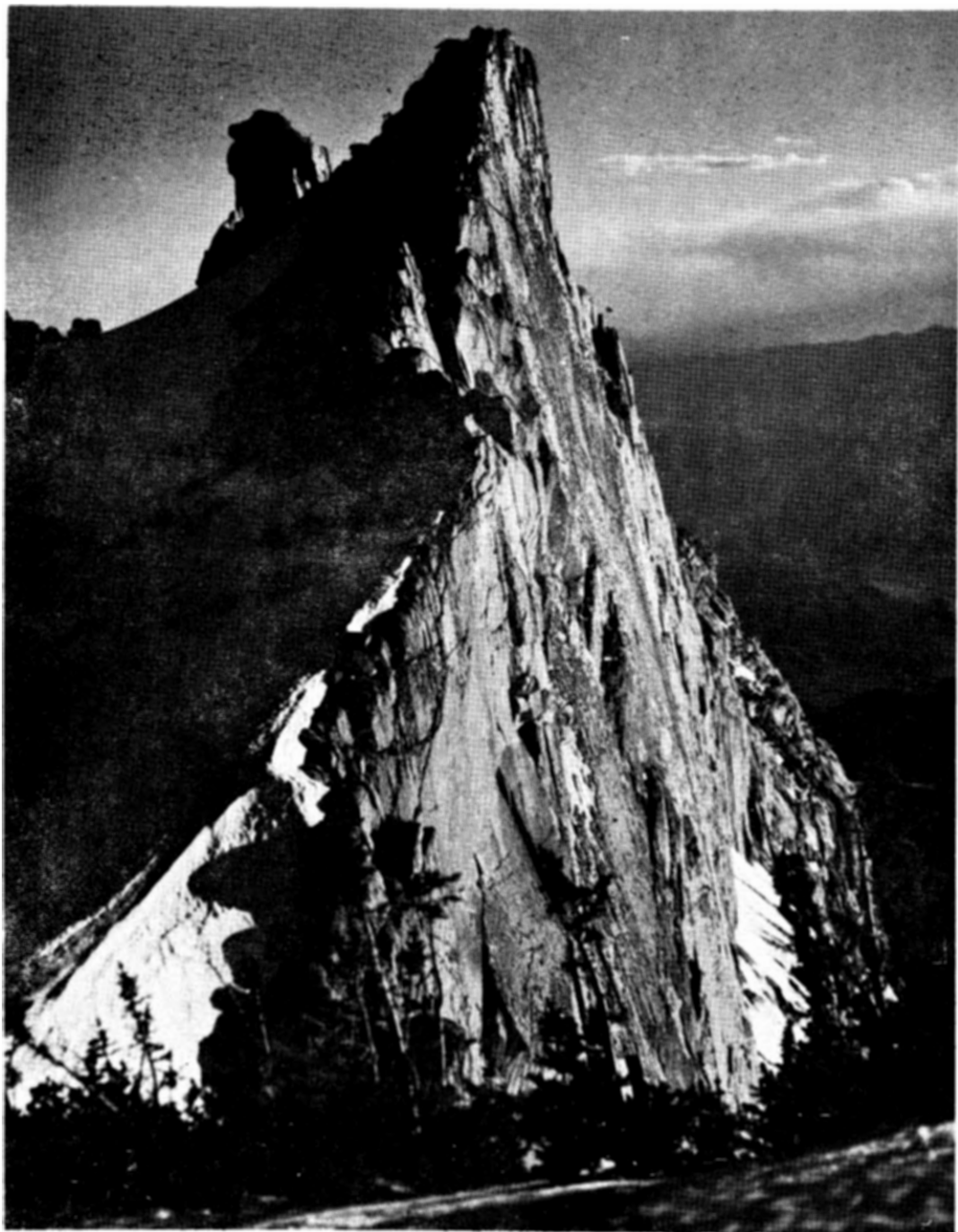


photo by Alexis Kelner

nominating committee report

by Fred Bruenger

You are probably aware that changes in our by-laws necessitated a minor reorganization of our nomination procedures. The triple "B" nominating committee (Bell, Bruenger, Byrne) had to find at least one replacement for each of the eight members of the board of directors who are retiring from club functions. The slate of the committee then has to be presented to the membership in the January Rambler, that is, well ahead of the nomination dinner. The membership then has an opportunity to nominate additional qualified members and to review the nominees of the committee and if dissatisfied with their choice other, additional qualified members can then be nominated from the floor at the time of the dinner. The regulations require that members who take advantage of that opportunity must have the consent of the person being nominated. The committee hopes that the membership will take full advantage of this opportunity such that the best members run our club during the next year.

Finding people to run for a board position has never been easy and the job of the committee has always required a fair amount of consideration, persuasion and maybe a little arm-twisting and this was no different this year. However it is very gratifying to see that there are enough people who are concerned about the club and are willing to sacrifice a great deal of their time to provide the leadership the club needs. Our special

thanks go to those who responded favorably to our call, to the people who care enough to say "yes"! We also hope that at the time of the nomination dinner, the membership will implement the slate of the committee, so that the best available people run our club.

The slate of the nominating committee includes:

Secretary.....Barbara Brower
Treasurer.....Ron Weber
Entertainment....Wilma McElhany
 Marian Nelson
LodgeMel Davis
Hiking.....Paul Horton, Pat. King
Ski Touring.....David Hanscom,
 David Smith
Boating.....Bob Everson
Conservation.....Sam Allen
Again our special thanks to these people.

Dick Bell
Fred Bruenger
Jim Byrne

river runners alert!

Mountain Club members have often expressed an interest in running the Grand Canyon again as a club. We have received several proposals--- ranging from \$170 to \$280 for seven to ten days. An additional cost would be a charge for transportation. The trip can be scheduled for late March through the summer. We must know **IMMEDIATELY** how you feel about it to finalize our plans. The plans include time for hiking and exploring---so give us a call by Jan. 12 so we can know you are interested. George Rathbun, 266-2993, or Ruth Henson, 272-3343.

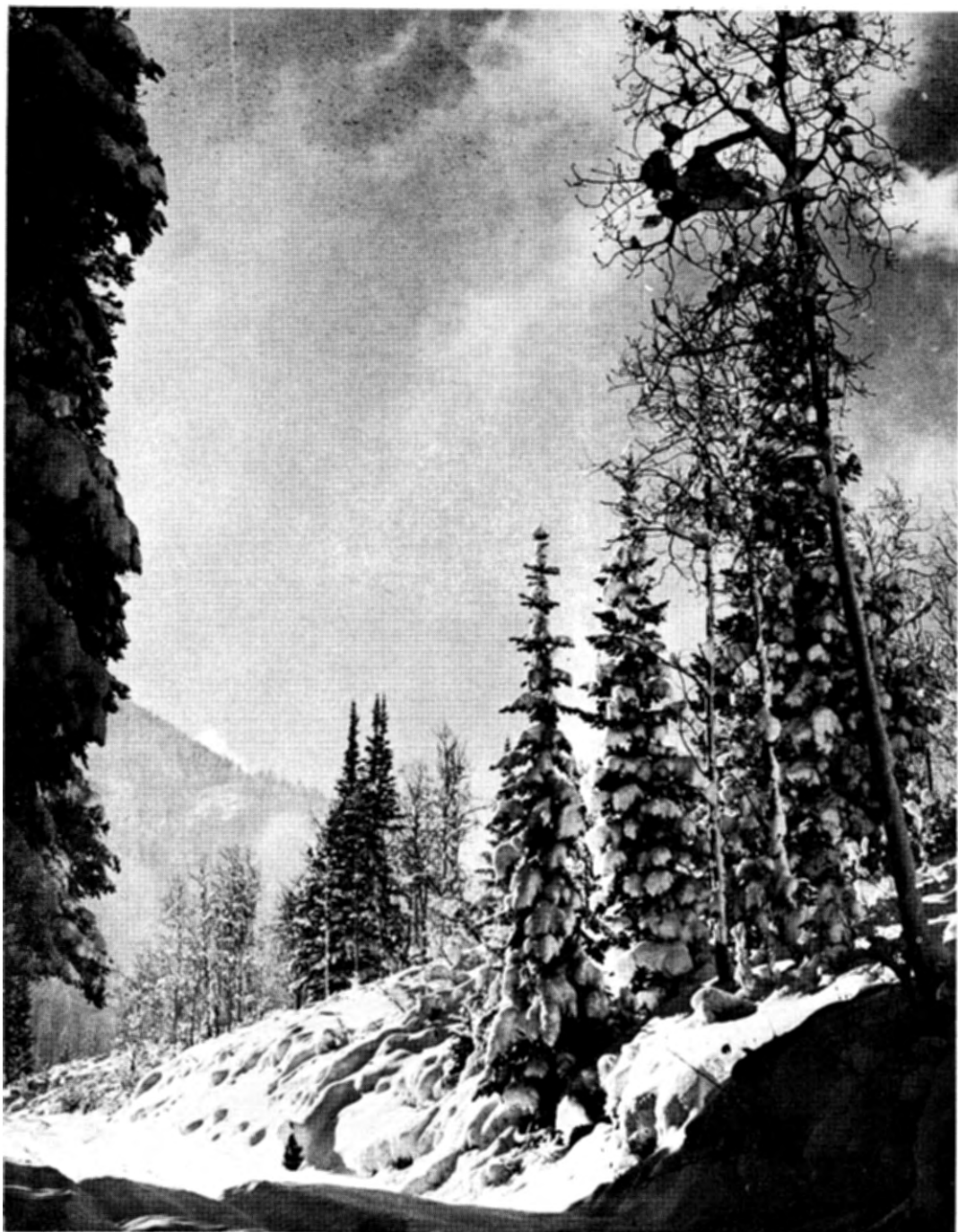


photo by Evelyn Bruenger

grand canyon

THANKSGIVING 1971

After many years, a Thanksgiving trip with a larger group of people down into the Grand Canyon finally materialized. Breaking up into three groups allowed us to accomodate not only the compulsive hiker but also the less strong ones. Of course, at this holiday the main routes in the canyon are over-populated (campgrounds in the canyon for the Easter holidays have been committed since September) and the major old trails registered over 300 people. It is always nice to find some spot in the canyon which still can provide the solitude one seeks. And so it was; a few other groups were encountered but not to the extent that it made our trip unpleasant. Here are some sketchy accounts provided by members of each group.

GRAND CANYON - GRANDVIEW TRAIL by Helen Rappaport

Seven tired and cold hikers soon forgot about their dreariness as they started down the Grand Canyon on the Grandview Trail. The trail was steep and slick with snow and attention was alternately focused on staying on the trail and looking out into the Canyon. We reached camp by 2:00 p.m. and the more hearty ones of our crew dashed around to get a view of the Colorado River while those less energetic members relaxed and caught up with sorely needed sleep.

As dusk approached, we heated our delicious Thanksgiving dinner of ham, turkey, green beans and rolls. Many thanks to a most excellent cook.

Well fed and warm we hit the sack and all had a good night's rest. The next day the group decided to split up. Half took the low road to the bank of the Colorado while another group took the high road to the Horseshoe Mesa. As this author was part of the high roaders, I can only say that we certainly were afforded several glorious views of Granite Gorge on our leisurely hike up to the Mesa.

That evening strange voices in the dark night approached. It was not long before the friendly faces of the Hance trail hikers appeared. Rumor has it that after many hot rum toddies, they just happened to be wandering around the mesa and came upon our camp.

The next day we said good-bye to the Horseshoe Mesa and headed toward the rim of the Canyon, knowing full well that we would return to see that grand view.

Grandviewers included June Zongker, Rick and Helen Rappaport, Becky Bernson, Kirk Hoefflich, Russell Patterson, and Bill Weber.

HANCE TRAIL TO TANNER MESA by Michael Maack

Well--we left Salt Lake at around 3:00 Wednesday afternoon, the 24th of November and drove till about 11:00 that night. We stopped at Waheap camp grounds and spent the night there. The night didn't last long, for we were up at 4:00 A.M. and on our way at 4:30.

We arrived at the south rim of the Grand Canyon at about 7:00. At Grandview point, everybody met and got ready for the day's journey.

Our group, taking the Hance trail, was on the trail after about thirty minutes, and we had eight miles to hike to the river that day. From the south rim we started our switchbacks on this steep trail, making our way to the river. Three burros were spotted star-

ing at us, but we just hiked on. We arrived at the Colorado river at about 4:30 and started to make camp on a beautiful sandy beach. It was so warm that night, and the moon was so very bright it made the sand and surrounding cliffs almost fluorescent.

We didn't miss Thanksgiving dinner either, and after that we all sat around and enjoyed listening to Kermit Earle's tape recording of the Grand Canyon suite. Then after a while, we went off to our sand beds and slept about nine or ten hours, even though, tired as we were, it seemed like hardly more than two hours before we were up and all set to move out at 8:30.

We left the roar of the Hance rapids for some silence on the open trail. We had been hiking for about four hours when the trail disappeared on the plateau, so we stopped for lunch. Pat decided to go over a small mesa to a ridge and follow that back to the trail. Well, later in the afternoon we started our hike up the canyon where the mine dumps by where we were going to camp. But at the spring while we were filling our water bottles, we heard that the campsite was being occupied--and by the time we got up there, sure enough, it was occupied! So we jaunted up to the top of the mesa and after a long, hard day, made camp there.

After dinner was over we saw a big camp fire down the mesa a ways, and thinking that it was the Grand view gang, five of us set out to find Zonker and Company. We got to the fire and the people told us Zonker and Company were still further down the mesa. After walking on this moonlight trail for fifteen minutes, we found them. We had some pleasant visiting while we watched the fire die out, and then we headed back to our camp. We climbed into the sacks, saying good night to some threatening clouds.

On Saturday, we were greeted with a fairly easy hike back up to the Rim. Then we sat and waited for our rides, talking about the great time we all had. It was a very enjoy-

able and relaxing journey, and an altogether perfect way to spend the Thanksgiving holidays.

The PARTICIPANTS were: Pat King (leader) Mary Jo Sweeney, Bill and Ronni Rosquist, Bob and Karen Weatherbee, Gerhard Henschel, Ruth Henson, Kermit Earle, and Michael Maack.

GRAND CANYON

(Hance to Tanner)

by Patrick Baudelaire

It began on a freezing Thanksgiving morning, at Grand View Point (South Rim). Everybody was eager to get down into the presumably warmer canyon; the only problem was to find the trails--our group and Pat King's team started near Moran Point, on the steep and disconcerting Hance trail, rendered more difficult by the fresh and slippery snow. At lunch time, on the edge of Red Canyon, we saw in the distance another hiking party which would meet us in the evening, at Seventy Mile Creek, after a confessed exhausting day. Our route was to be easier, following down Red Canyon to roaring Hance Rapids, a surely exciting and somewhat awesome view for the river rat ... Separating there from Pat King's route, we followed the Colorado to the east, encountering the biggest obstacle of the day: a cliff falling abruptly to the river, which we laboriously climbed up a crumbling rock slide. After this performance, we were ready for the full-course turkey dinner excellently prepared by Eveline and Fred.

The next day, we would hike along the Colorado, up to Tanner Canyon; well, actually, not really along the river ... We first entered the deep and narrow Seventy Mile Canyon to a point where we could climb up the ridge and follow it down to the river; then we climbed up Escalante Creek, and ascended in a meritorious effort, the high and narrow promontory that

separated us from Cardenas Creek; the hike down Cardenas Creek and its nice dry waterfalls led us back to the Colorado. Walking along beaches and old indian trails, we reached our camping site, the sand delta of Tanner Creek, faced by an impressive mountain of basalt. Exploring the beach, we found the bulky litter of the adepts of a new camping technique: throw-away sleeping bags, disposable air mattresses ...

However, we were not converted to this method, and on the next day stubbornly carried our gear up the Tanner trail, under the eye of Desert View Tower, in the last effort of a great and rewarding trip.

Leader: Fred Bruenger;
Eveline Bruenger, Fran Flowers,
Don Carlton, Richard Fast and
Patrick Baudelaire.

travel in nigeria!!

Extracts from a letter from June and Bill Viavant, dated 11 Nov. 1971 from Kano, Nigeria:

Bill planned an ambitious but neat trip by car, driving through Africa and north to south (Algeria to South Africa), then across the ocean to Argentina, and driving South America from south to north and home to Salt Lake City.

However, when Bill planned our neat trip, he failed to take into account the incredible perversities of our Travelall, which visited garages in Dayton, Ohio, Brussels, Belgium, Ljubljana, Yugoslavia, Milano, Italy, Ghardaia, Algeria, Tadjemout, Algeria (where Bill and Dell were the mechanics), Tamanrasset, Algeria, and finally quit altogether (of a broken pinion gear and a broken motor mount) right in the middle of the Sahara.

June and the boys camped there for three days, while Bill hitched a ride to Agades. (The only vehicle going south in three days passed us 20 minutes after the breakdown.) There he arranged for a ten-ton truck to come out into the desert to get both us and our car (for a monstrous fee). The truck driver took us almost 1,000 miles to pavement, but refused to let us go until our check cleared the bank and returned. NOW we realize how VERY different Africa really is. Eight, nine, ten days after the check left by air mail we were still waiting; we phoned the consul in the capital of Niger for advice or help, then waited another week; we wrote our bank directly ourselves airmail, then moved from the hotel into a vacant house that had been rented on a year's lease by AID and then had its program curtailed; we waited another week; then another whole week. Although the Nigerian border was only 100 miles away, there is no phone connection from one country to another (in fact, one must phone from Zinder, Niger to Paris, France, from Paris to London, and thence from London to Nigeria) so Bill made a quick trip across the border to try to locate parts. Although Travelalls are sold in Nigeria, there were no replacement rear assemblies there. Finally in desperation we simply went on by bus and left the confounded car right there.

Our trip plans are in shambles...



rdt

rdt concert

January 14,15,21,22

If you live in or near Salt Lake, your Rambler includes a dollar discount ticket for any evening concert of the Repertory Dance Theatre at the University of Utah. There will be a concert series January 14, 15, 21 and 22 (Fridays and Saturdays) and another series in May. This outstanding group of young performers is a professional company in residence at the University of Utah, supported by the Rockefeller Foundation. They are one of the few companies from outside of New York and Chicago to have made successful appearances in New York on their many tours. They're Great! They're doing for dance what Stein did for ski technique. Come see them move.

A sizeable group of WMC members will be going to see rdt on opening night, Jan. 14th, then meeting afterwards at the Harveys for BYO snacks and champagne. If you'd like to join us, call Marilyn Keir (467-0265) so we can get a head count.

news and notices

FOR SALE

BARRCRAFTER trunk lid ski rack - 4 skis - \$15. HENKE 5-buckle ski boots - size 10 medium - \$7.50. 1 - Hart 6'11" metal ski FREE to anyone who can use it. 2-man Army waterproof nylon mountain tent, needs poles. Free to a teenager who needs one. Call Dale Green, 277-6417.

HITCHED

Barbara Brown and Ed Cooke on Nov. 24th.

YAMPA RIVER RATS--keep the faith!!

THANKS

...Betty Hendricks for typing the addition to the Membership List.

...Rose Morrison, Mary Katsanevas and Diane Jensen for typing this months RAMBLER.

...Linda and George Rathburn and Margo and Pete Hovingh for mailing the December RAMBLER

DEADLINE

for the February RAMBLER is January 15th. Please have your articles and schedules TYPED and mailed or delivered to Ruta Dreijmanis, 1941 Woodside Drive, Apt. A, Salt Lake City, Utah 84117 - 272-1412

While exploring an old mining shack in the Oquirrh's, Donna Hanck and Chuck Mays found this newspaper story of the first known ascent on the north center face of the Grand Teton.

The Salt Lake Tribune

SALT LAKE CITY, UTAH, SUNDAY MORNING, AUGUST 16, 1953

FIRST NORTH FACE ASCENT

2 S. L. Climbers Scale Grand Teton

The dramatic story of how two Salt Lake City mountain climbers made the first known ascent of the north center face of Grand Teton after spending a night lashed vertically to the rock, was told here Saturday.

The climbers are Jim Shane and Harold Goodro, members of the Wasatch Mountain Club, Salt Lake City.

The Grand Teton is the 13,766-ft. rugged giant dominating the west side of Jackson Hole.

Never Up Center

The north face has been climbed only two or three times in history, but never up the center, which is a sheer face of some 2,000 ft.

The two men, who have climbed the peak several times, were trapped by darkness after 13 hours on the mountain. They drove steel pitons into the rock, lashed themselves in a standing position, and spent the night there. Temperatures dropped down to near the freezing level.

Early the next morning, they finished the climb.

Goes Back Up

But that wasn't enough, the two climbers then went down via the "Owen Route," to the Garnet

Canyon base camp and Goodro led a group of Wasatch Mountain Club members back up to the top that day, via the easier "Exum Route."

Both Shane and Goodro are "part time" mountain climbers and have several "first ascents" to their credit in the rugged Wind River range of Wyoming.

Goodro is a utility company employe and Shane an electrical engineer. Both are married and have children.

Summer Trip

The ascent was made while the two were accompanying a group of Wasatch Mountain Club members on a summer trip to Jackson Hole.

Two weeks prior to the Teton conquest, Shane and Caine Alder, another Wasatch Mountain Club member, hiked from the North Rim of the Grand Canyon to the bottom, up to the South Rim, and made the return trip. It took about 22 hours to make the journey, a distance of about 45 miles and some 18,000 vertical feet.



Jim Shane



Harold Goodro

ski touring notes

by David George

Plans are now being made for some out of town trips during February and March. Tours in connection with the Grand Targee Ski trip will be run and may include a nordic tour to Alaska Basin via the south fork of Teton Canyon as well as a normal alpine tour in the environs of Grand Targee itself.

Leaders are needed for trips to the Tetons. Sawtooths, Uintahs and??. Please contact me if you are interested in leading or participating in such adventures.

We have a few particularly notable tours planned for the local scene. Thunder Mountain, the skiing equivalent of the beat-out hike; Deseret Peak, which is another long tour, and possibly Lone peak or Twin Peaks, are all possible with a strong group. These tours are all extremely difficult so if you want to go on them, get in shape by coming on our regular tours.

USSA SKI COUPON BOOKLET

Get your reduced rates on many of the lift passes in the Mt. West - Alta, Park City West, Snowbird, etc. Order your booklet (\$4.00 for WMC members) from SPARKY.

home 487-0168
work 486-1027

SIERRA DESIGN-CMI NORTH FACE - LOWA GALIBIER-VOYAGEUR CHOUINARD - KELTY DOLT

Specialists in lightweight back
packing, mountaineering and
ski touring equipment.



TIMBERLINE SPORTS

2959 Highland Dr. 466-2101

HOURS: Monday-Thursday 12:00-8:00 pm
Friday 12:00-9:00 pm / Saturday 10:00-
6:00 pm



Cover photo by Pat King

Wasatch Mountain Club business is conducted only on the first and third Wednesdays of each month. At that time, and only at that time, is the mail opened, new membership applications voted on, dues payments recorded, address changes made and all other business requiring board action conducted. All board members cannot attend all board meetings and although an effort is made to fill in during a member's absence, some business is held for action until the next meeting.

WASATCH MOUNTAIN CLUB
2959 Highland Drive, Salt Lake City, Utah 84106 Phone: 363-7150

APPLICATION FOR MEMBERSHIP

To the Board of Directors:

I hereby apply for membership in the Wasatch Mountain Club. I enclose the \$4.00 entrance fee and \$6.00 dues (spouse \$3.00). I have attended 2 outings (hikes, ski tours, cave trips, camping trips, rock-hound trips, work parties) and am genuinely interested in the out-of-doors. (Please note that social events (lodge parties, ski socials, etc.) are not included in the definition of outings.) I agree to abide by all the rules and regulations of the Club as specified in the Constitution and By-laws and as determined by the Board of Directors.

| | | |
|--|---|------------|
| Name (print)_____ | Outings attended: _____ | Date _____ |
| _____ | 1. _____ | |
| Signature _____ | 2. _____ | |
| (If spouse membership please print name of spouse) _____ | Recommended by: _____ | |
| Address _____ | Member: _____ | |
| City _____ | Director: _____ | |
| Zip _____ Phone _____ | (Please note: you must have above signatures before your application can be presented to the Board of Directors.) | |
| | (Effective January 1 to September 1, 1972) | |

WASATCH MOUNTAIN CLUB, INC.

2959 Highland Drive / Salt Lake City / Utah 84106

BULK RATE
U. S. POSTAGE

PAID

SALT LAKE CITY, UTAH
PERMIT NO. 2001

Address Correction Requested / Return Postage Guaranteed

BOARD OF DIRECTORS

| | |
|---------------------------------------|-----------------|
| <i>DENNIS CALDWELL, President</i> | 278-2100 |
| <i>DENNA WRIGHT, Secretary</i> | 272-1177 |
| <i>CHARLEY SWIFT, Treasurer</i> | 277-2267 |
| <i>JIM BYRNE, Boating</i> | 582-5631 |
| <i>SHEP BLOOM, Conservation</i> | 277-3079 |
| <i>WILMA McELHANEY, Entertainment</i> | 364-9206 |
| <i>FRED BRUENGER, Hiking</i> | 485-2639 |
| <i>PHIL BERGER Lodge</i> | 322-1873 |
| <i>JUNE ZONGKER, Membership</i> | 262-7092 |
| <i>DAVE SMITH, Mountaineering</i> | 467-9163 |
| <i>RUTA DREIJMANIS, Publications</i> | 272-1412 |
| <i>DAVE GEORGE, Ski-Touring</i> | 364-7025 |
| <i>DAN THOMAS, Transportation</i> | 484-3873 |