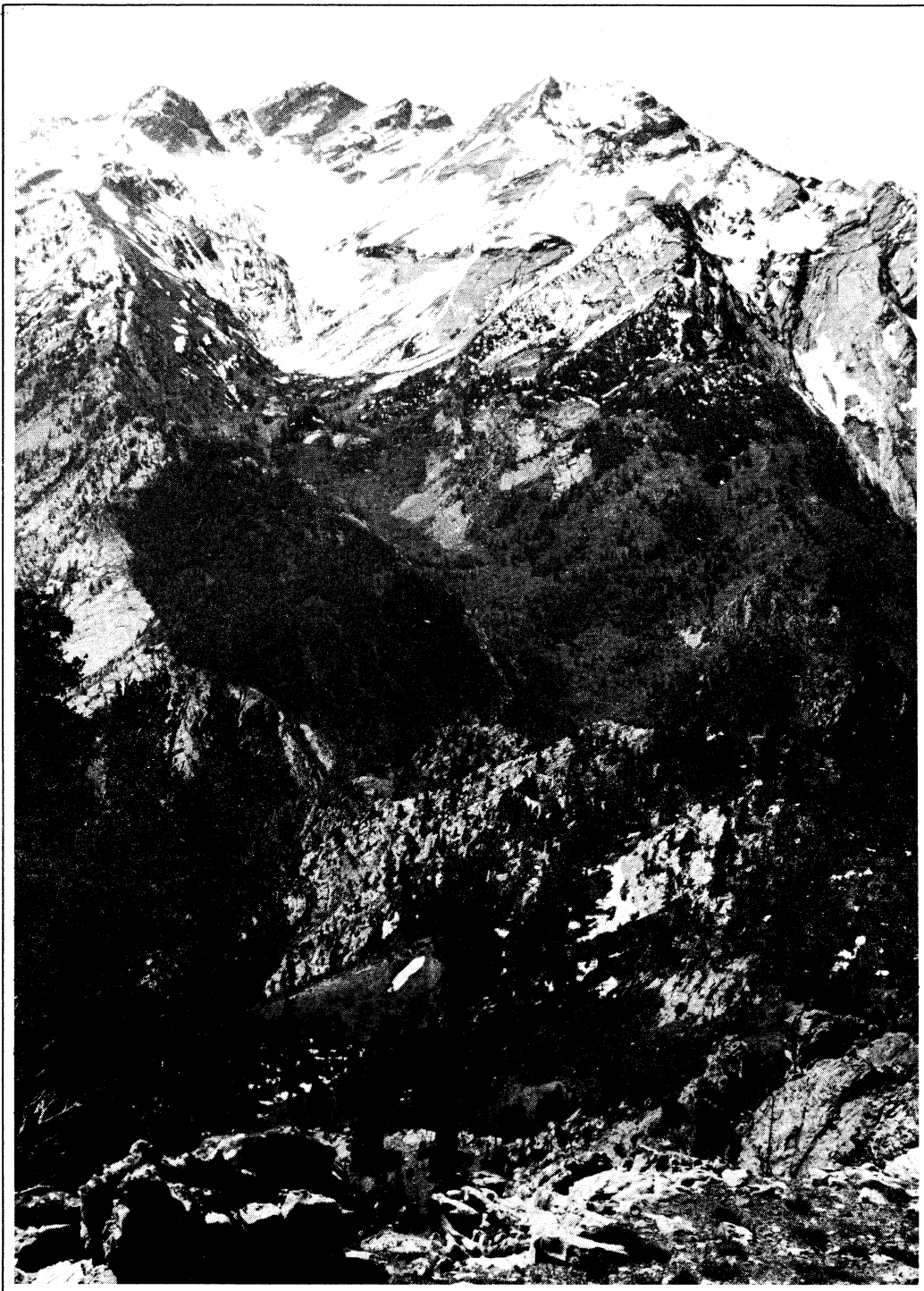


The Rambler

DECEMBER 1973



Official publication of THE WASATCH MOUNTAIN CLUB Salt Lake City, Utah

Club activities for December 1973

REGISTRATION WITH TRIP LEADERS is important for ski tours since weather and snow conditions can cause cancellation or change in organizing car shuttles early enough to avoid delays. Register with the leader by some reasonable hour on the day before the tour.

RATINGS OF SKI TOURS (X,Y) describe the difficulty of the climb (X) and the skiing proficiency required to get down (Y). Both are rated from 1 to 6, in order of increasing difficulty. A detailed description of some popular tours is in the November 1972 RAMBLER. Contact the leader if you are in doubt about your ability to do the tour.

- | | |
|------------------------|--|
| DECEMBER 1
Saturday | Timberline Nordic Skiing Clinic. Meet at Timberline at 9:00 a.m. for a day of x-country skiing instruction. |
| DECEMBER 1
Saturday | Honeycomb Tour - Intermediate (2,3). The climb from the top of Evergreen Lift to the head of Honeycomb Fork is quite short, but the descent is quite challenging. The road into Silver Fork is narrow in spots, so skiers need to be able to handle deep snow to safely do this tour. For starting time and place, call Milt Hollander - 277-1416. |
| DECEMBER 2
Sunday | WMC/Timberline Beginner Tour - Call Timberline for details before 6:00 p.m. Saturday - 466-2101. |
| DECEMBER 8
Saturday | Timberline Nordic Skiing Clinic - Meet at Timberline at 9:00 a.m. for a day of x-country skiing instructions. |
| DECEMBER 8
Saturday | Moonlight Tour - Catherine Pass from Brighton - Intermediate (2,2). Meet at the lodge at 7:00 p.m. for the first evening tour of the season. The group will return to the lodge for a hot drink and fireside conversation after conquering the snowy mountainsides. There will be hosts if anyone would like to stay overnight. Leader Oscar Robison - 278-3923. |
| DECEMBER 8-9 | LODGE OPEN - Featuring Kayak Races and some boating films. Everyone, including children, welcome. We are planning a community chili pot. Perhaps baby sitting duties could be spread out among parents so that everyone can get out some-time during the two days. Bring your own utensils, sleeping bags and fun-in-the-snow equipment - yes, we said KAYAKS, and the more conventional stuff. Call J or Alice Dewell for details - 295-2754. |

DECEMBER 9 WMC/Timberline Beginner Tour - Call Timberline for details
SUNDAY before 6:00 p.m. Saturday - 466-2101.

DECEMBER 9 Advanced Ski Tour - Conditions will determine the destination
Sunday of this tour, but it will be the toughest one. possible that
day. Call the leader for details: Dave Smith - 486-2680.

DECEMBER 15 WMC/Timberline Beginner Tour - Call Timberline for details
Saturday before 6:00 p.m. Saturday - 466-2101.

DECEMBER 15 RED PINE SKI TOUR - Intermediate (3,3) - Although you must
Saturday work for every foot of vertical, the powder skiing is usually
well worth the effort. Nordic skiers should be aware that
there are some fairly steep sections. Meet at the mouth of
Little Cottonwood at 8:30 a.m. Leader: Jack Spear - 487-6065.

DECEMBER 15 HOLIDAY PARTY - The Holiday Party will be at Bob and Denna
Saturday Wright's Dome at 3033 East 5800 South. Bring the holiday
spirit and have a good time again at the Wright's. Drinks
and snacks will be served a minimal fee.

DECEMBER 16 WMC/Timberline Beginner Tour - Call Timberline for details
Sunday before 6:00 p.m. Saturday - 466-2101.

DECEMBER 16 MINERAL FORK SNOWSHOE TOUR - Intermediate (2,2) - After about
Sunday a half a mile of switchbacks on an old mining road, the canyon
turns into an ideal touring area. It's good for skiers too,
except for the bottom section, which can be handled with skis
on the shoulder. Meet at the mouth of Big Cottonwood at
8:30 a.m. Leader: Charlie Swift - 532-3996.

DECEMBER 19 LAKE SOLITUDE MIDWEEK TOUR - Beginner (1,1) - Need to get
Wednesday out of the house between weekends? Here's a refreshing way
to break up the week. This is ideal for snowshoes and nordic
skis. Meet at the mouth of Big Cottonwood at 9:00 a.m. and
bring a lunch. Leader: Mel Davis - 278-3174.

DECEMBER 22 Timberline Nordic Skiing Clinic. Meet at Timberline at
Saturday 9:00 a.m. for a day of x-country skiing instructions.

DECEMBER 22 ADVANCED SKI TOUR - conditions will determine the destination
Saturday of this tour. Call the leader for details. Leader: Pete
Hovingh - 359-4791.

DECEMBER 23 WMC/Timberline Beginner Tour - Call Timberline for details
Sunday before 6:00 p.m. Saturday - 466-2101.

DECEMBER 23 LAKE MARY AFTERNOON TOUR - Beginner (1,) - Meet at the lodge
Sunday at 1:00 p.m. for a liesurely afternoon away from the
Christmas rush.

DECEMBER 29 Timberline Nordic Skiing Clinic. Meet at Timberline at
Saturday 9:00 a.m. for a day of x-country skiing instructions.

DECEMBER 29 Saturday	INTERMEDIATE NORDIC TOUR - Destination will be determined at a later date. Call the leader for details. Leader: Phil Ryan - 355-1591.
DECEMBER 30 Sunday	WMC/Timberline Beginner Tour - Call Timberline for details before 6:00 p.m. Saturday - 466-2101.
DECEMBER 30 Sunday	LOOKOUT PEAK SNOWSHOE TOUR - Intermediate (2,2) - This popular summer hike is a new offering for the winter season. The terrain quite gentle, and would be suitable for nordic skis too. We may not reach the summit of the peak, but hopefully we can get out of snowmobile range. Meet at Hogle Zoo at 8:30. Leader: Shelly Hyde - 363-9564.
JANUARY 5 Saturday	Timberline Nordic Skiing Clinic. Meet at Timberline at 9:00 a.m. for a day of x-country skiing instructions.
JANUARY 5 - 6 Saturday - Sunday	SKI TOURING COURSE. Once again we will have two days of instruction for anyone wishing to learn about nordic skiing equipment, waxing and technique. The course is designed to go beyond the Timberline Clinics in all of these areas. Meet at 1:00 p.m. Saturday at the lodge for a short session before moving to Redman Campground. We will start at 10:30 a.m. Sunday at the lodge and then take a short tour to an area where we can practice downhill turns in deep snow. We are asking for a \$5.00 contribution to the ski touring fund for the two-day course. Contact Dave Hanscom for further information - 487-6065.
JANUARY 5 Saturday	MOONLIGHT (AND COMETLIGHT) TOUR -SNAKE CREEK PASS - Intermediate (2,2) - Meet at the lodge at 6:00 p.m. for a rare treat in evening tours. Weather permitting, we will be able to observe the comet without valley smog to interfere. We will return to the lodge for hot drinks after the outing. Anyone desiring to stay overnight should contact the hosts. Leader: Chuck Mays - 582-3818.
JANUARY 6 Sunday	WMC/Timberline Beginner Tour - Call Timberline for details before 6:00 p.m. Saturday - 466-2101.
JANUARY 6 Sunday	ADVANCED SKI TOUR - Conditions will determine the destination of this tour. Call the leader for details. Leader: Gale Dick - 359-5764.
JANUARY 26 Saturday	AVALANCHE SAFETY COURSE.

news and notices

THANKS TO

-George and Georgia Randall for
mailing the December RAMBLER.
-Betty Hendricks for typing help.
-Pat Milligan for mailing
the November RAMBLER.

WASATCH TRAILS

Please send postpaid _____ copies of WASATCH TRAILS for which I enclose \$ _____ Price \$1.50 each.		
Name _____		
Address: _____		
_____	_____	_____
City	State	Zip

to: Bill Rosqvist
281 South 1000 East
Bountiful, Utah 84010

Rambler Deadline

....for January is Saturday,
December 15. Please have
your articles and schedules
TYPED and mailed to:
ATTENTION: RAMBLER EDITOR
Wasatch Mountain Club
3155 Highland Drive
Salt Lake City, Utah 84106

THIS IS NOW THE PICTURE -- on
pictures. If you have a color
print, negative or slide which
you think might turn out well
in black and white, please consider
this: the WMC will pay for the
conversion and enlargement if
your picture is accepted. So
please send it in! Deadline for
such pictures will be the 8th of
the month, to allow time for pro-
cessing.

IF YOU WANT photographs, slides,
negatives, artwork, etc. returned,
please indicate.

REMEMBER THAT we need black and
white glossies too!

Dixon Smith and Marge Yerbury
were married October 19 in
Los Angeles.

Paula Mickle and Stewart Roberts, Jr.
were married on August 4, 1973
in Salt Lake City, Utah.

Wasatch Mountain Club business is conducted only on the first and third
Wednesdays of each month. At that time, and only at that time, is the
mail opened, new membership applications voted on, dues payments
recorded, address changes made, and all other business requiring board
action conducted. All board members cannot attend all board meetings
and although an effort is made to fill in during a member's absence,
some business is held for action until the next meeting.

Avalanche Safety

By Dave Hanscom

The Wasatch Mountains contain some of the most hazardous avalanche terrain in the country. It is important that tourers be aware of this and learn enough about potential avalanche conditions and proper choice of route so that this type of problem may be avoided. Anyone who regularly participates in intermediate or advanced tours would be wise to read a good text on the subject (The ABC's of Avalanche Safety by Ed LaChapelle is a good starter) and attend the Club's annual avalanche course every few years.

Before embarking on a tour where potential avalanche danger exists, one should obtain as much information as possible about snow and weather conditions. The Forest Service Alta Guard Station is manned by snow rangers who are happy to tell you about these things, but they will seldom make recommendations on the advisability of a particular outing. I have asked Milt Hollander to keep in touch with the avalanche situation and provide information to tour leaders who are in need of advice before taking a trip. Call Milt at 277-1416 if you are in doubt about an area.

The second way in which I am trying to insure the safety of WMC members is to make avalanche probes available at a price that everyone can afford, in hopes that tourers will get in the habit of always having them along.

They have saved many lives. As many of you know, I made a few probes last year and found a problem with them. They have been rebuilt and sales have begun. (Price is \$7.50.) The Club will have a few probes available for rent at Timberline Sports. The fee will be \$1.00 for the weekend with a \$5.00 deposit returnable when the probe is brought back. Avalanche probes and cords will be required on advanced ski tours this year.

which tour for whom?

By Dave Hanscom

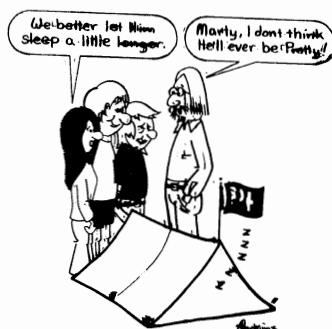
People often ask me whether they can handle a particular tour or if they will be welcome with a certain kind of equipment. I would like to make some general comments on this subject.

First, regarding snowshoers on ski tours and vice versa, or nordic skis on intermediate or advanced tours, the important criterion should be the effect on other tourers. Snowshoes and skis are often compatible, particularly on relatively flat terrain, but very few shoers are capable of handling the more difficult ski tours or can keep up with skiers on long downhill runs. Beginner outings are suitable for both unless noted otherwise in the schedule. If you think you might hold up the group because of improper equipment, better try something else.

As for tour difficulty, the first part of the rating is much like a hike rating, with length and verti-

cal rise taken into consideration. Your physical condition determines how high a number you can handle. The second part describes the difficulty of descent. To put this into perspective, a comparison can be made to slopes at the ski areas. Skiers with ability to handle Main Street, Pay Day or Majestic with confidence could take tours rated 1 or 2; they should have mastered the kick turn, however, for the sections where it is the only alternative to turning in the powder. Nordic skiers should also be able to manage these tours with good snow conditions particularly the ones with long run-outs. A rating of 3 requires intermediate skiing skills, as would Collins Face, Bob's Bowl, Millicent, or Thayne's; ability to turn in unpacked snow becomes more important. The higher rated tours are for advanced skiers who can manage any slope with any snow conditions; sometimes the survival instinct helps, too.

The leader of a tour will be able to help you decide if it is suitable for your equipment and ability, but your common sense must ultimately be your guide.



MOUNTAINEERING

Ramblings

By Paul Horton

Our last out-of-town trip for the year was to the Ruby Mountains in Nevada. During the beautiful weather, various groups scrambled up Verdi Peak, Ruby Tower, and Mount Fitzgerald. Not bad considering we never got going earlier than 1:00 p.m. This is a nice area with some impressive peaks, but unfortunately a lot of the rock is too rotten for good climbing. Much to our disgust, the Lamoille Canyon road has been paved, no doubt some development or other will appear before long.

Participants were Larry Perkins, Mike Hendrickson, Rob Snyder, Marty Snyder, and Paul Horton.

The recent experience climb on Mule Hollow Wall turned out to be quite difficult, at least for me. The climb wasn't so bad, but Oh Lord!, the hangover from the previous night's Western Party nearly did me in. Anyhow, our route was on the north end of the wall, a long bushwack from the canyon bottom. Hal led the first, and hardest, pitch up to an open book and there we split into two ropes to save time. Audrey and I stayed in the book while the others went straight up the wall to its right. The top was soon reached and it provided an excellent place to sit and enjoy the finest day of the autumn.

Climbers were: Audrey Stevens, Cal ?, Renny Jackson, Paul Horton, and the leader Hal Gribble.

From the President

by LeRoy Kuenl

Nominations:

A nominating committee has now been appointed to select candidates for next year's Board of Directors. If you have suggestions or are interested in running for a board position yourself, contact one of the members of this committee:

Dale Green 466-0090

Buzz Marden 278-1974

Gerry Powelson 756-3004

Canyon Hearings:

Two hearings which will play a major role in determining the fate of Little Cottonwood Canyon will be held in the near future:

1. County Planning Commission Hearing - December 6, 1973
at 10 A.M. - Third Floor Auditorium, Metropolitan Hall of Justice. This hearing will consider whether the Salt Lake County Master Plan should be amended to include the Alta/Little Cottonwood Canyon General Plan (the Eckbo, Dean, Austin & Williams and Le Blanc & Company study). The latter plan would place well defined limits on the amount of additional development allowed in Little Cottonwood Canyon. The recommendations are generally reasonable, and are supported by the majority of outdoor and conservation organizations in the Valley. You should already have received, by post, information concerning the hearing and a summary of the Alta/Little Cottonwood Canyon General Plan. I urge you to speak at this hearing; if you cannot attend, make your views known by writing:

Salt Lake County Planning Commission
2033 South State
Salt Lake City, Utah

2. House Committee on Interior and Insular Affairs -
Hearing on the Lone Peak Wilderness Area. This
hearing was discussed in last month's Rambler.
Originally to be held in November, it has been
delayed due to the possible impeachment of President
Nixon. Our best guess now is that the hearing will
be held in January. You will be kept informed.



DEBC on Cataract Canyon

OR Don't

Get the Dishwater Dirty

By Jim Mason

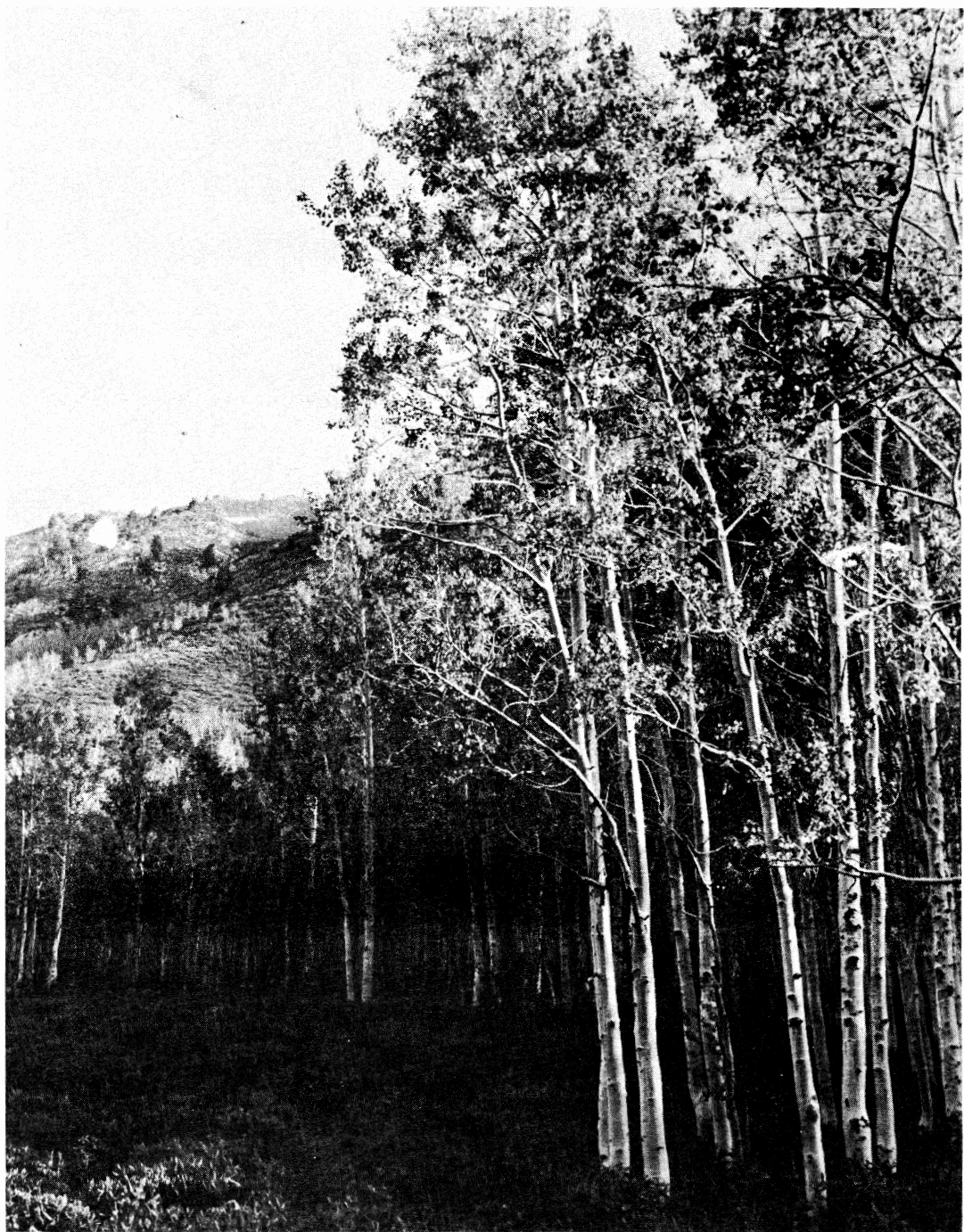
After receiving an urgent printout from one of his computers stating that the trip was rapidly approaching, trip leader Bill Viavant was able to assemble a crew for the Monday night work party. It was decided there would only be enough people to fill two boats. But, who was going still remained indefinite. As tradition would have it, we retired to the Twi where everything came into focus.

On Wednesday, twelve hearty souls departed Salt Lake, six riding in the Viavant truck with all the equipment, and the remaining six in Judy Ching's machine. The truck contingent arrived at Mineral Bottom on the Green River by 10:00 p.m. While driving down a most precipitous road, we enjoyed a most spectacular view of the canyon by moonlight. Moki Mack, an incredible human being, was to drive the truck back to Green River and then to escort the second group back. But, the best laid plans of river rats and men do not always happen. Moki had troubles with the unpredictable truck. We hiked to the truck, got it started, and Bill drove it back to Green River. The others finally arrived at 4:00 p.m. The moral of the story (if there ever is one) is to not bother to get an early start, it just doesn't matter.

After a great water fight to cool everybody off, we finally got on the river at who knows what time. The next two days were spent leisurely floating down the river to the disquieting tune of man's ever present invention, the outboard motor, and to the harmony of "knee-deep, knee-deep". We would run aground on the numerous sandbars which required people to get out and push, whether you could stand or not, thanks to the Skolioli Machine. It seemed that Don was always filling his cup from that great dispenser. Anyway, it was such fine music, "knee-deep, knee-deep", until it wasn't knee-deep any longer, at which time we could crank up the motor. Dennis was heard to ask whether those knee-deep sounds were human or nonhuman.

About noon the first day we encountered the most fantastic stream channel with the best, smoothest, wettest mud you can imagine. Naturally, we couldn't pass that up. By wallowing in the mud, it brings back thoughts of our primeval past. Such enjoyment! June was overheard stating that the mud really does something for you. Well, you will have to ask June what it does.

Later in the afternoon we stopped at Fort Bottom to examine some Indian ruins 100 feet above the river. Such a magnificent view of the river from the ruins, due to the sharp bend, you could see the river coming and going while looking in one direction. An old cabin stood nearby which is believed to have been built by outlaws. Actually, it was probably built by a river-watcher assigned the job by Odin.



After a very delicious dinner of kabobs, we decided to float down the river. Such delightful scenery and mysterious images were produced by the full moon. But, for some reason, we kept getting stuck on sandbars. We decided to camp. As usual, insanity ruled. What a time we had trying to get everything up the bank where we had stopped.

The most notable experience of the second day was to see some mountain sheep standing majestically above the river. We probably would never have seen them had it not been for the busted shear pin that needed replacing. Upon our late arrival to Spanish Bottom, we thoroughly enjoyed Judy's fantastic Mexican dinner.

The next morning we were awakened early by a chorus of "knee-deep" which was sung by the not so harmonious dual of Mike and Dennis. Today was the "Biggy"! We set out onto the river using the paddles for the first time. The rapids were easy to start, terrific designing on Odin's part. We realized how heavily loaded both boats were, but it was compensated by the greater stability. I was in June's boat which usually followed Mike's boat, we let him play the guinea pig. Then we hit Mile-long which lives up to its name. We made a "slight" miscalculation, a rock appeared in front which we had to quickly avoid. But, a huge rock was farther downstream. We almost lost the whole thing right there, instead we miraculously slithered around it after coming in contact with it. That was quite unnerving. Mike's boat had avoided the mess completely. On to the Big Drops. We ran the first fine without without scouting. Looked at the first part of BD Two. No problem there running that long stretch of nice water.

Looked at the last part of BD Two. It was short but tricky. Through that fine. We looked long and hard at BD Three. That one really looked mean! The longer we looked, the worse it got. The right side was the only way down. On the left of the proposed route was an ugly, boat-ripper rock, on the right was a really mean hole. Such a fine line to cut. Off we went. Mike's boat in the lead. The current was pulling them toward the hole! We could see them power out of trouble. fantastic! We made corrections, but I thought we were still heading into that HOOOLE! Suddenly June yells that we had past it, I guess she should know since she looked right down into it. Thanks, Odin! The last eight or so remaining rapids were terrific, nice and clean with big standing waves. Such rides! What ecstasy!

Then it all ended. The last rapids ended in that abomination known as Lake (I use the name loosely) Powell. It was very traumatic to see the death of a canyon after all those great rapids. Words can not describe the sorrow felt when we could see the tops of trees sticking out of the water. If the "lake" fills to its proposed level, it will come to the base of Big Drop Three. We have lost so much, why do we have to lose more?

Waking up the next morning, we realized what a beautiful canyon we had entered the night before. We arrived at the mouth of Dark Canyon in the dark and proceeded up the canyon until it became too narrow. Fortunately, there was enough room to camp on the limestone ledges. The entire day was spent hiking up this remote, beautiful canyon. Finally, the pools and waterfalls were just too much by midafternoon. On the way back to camp, many spent the time pool hopping in that cool, refreshing water.

By the time it was dark, everybody was back in camp and the festivities had begun. Various forms of liquid refreshment were passed around. What a burn-out! It was rather hilarious by the time dinner was served, but Bill's secret recipe was superb.

The last day was spent motoring across the "lake" to Hite. I dreaded the thought that if that dam had not been constructed we could still be floating through rapids. There were still some high points of the day. We celebrated Pat's 21st birthday with a bottle of champagne that he brought and the left-over dessert from the night before. What a royal celebration! Finally, the end of the trip was near. With Hite close by, I crawled to the front of the rafts and picked out a trusty bucket. When we got to shallow water, I dove in and came up throwing water. What a fight! The people at that ugly place probably thought that the end was near. Oh well, at least we had our fun. Moki arrived with the vehicles and a watermelon that he had personally picked that morning, truly a generous person.

WHAT A FANTASTIC TRIP!!! Thanks go to ____ ____, Hurry Up Bill Viavant for serving in that honorable position as trip leader.

The other river rats were captains, June Viavant and Mike Omana, and paddlers, Judy Ching, Don Fox, Martha MacKnight, Dennis Webb, Pat Milligan, Dave Perry, Marlene Austin, Clyde Zalut, and Jim Mason.

KAYAKING DIRECTOR (ACTING)

At its last meeting the Board decided to institute a Director of Kayaking. Since the Board is already sufficiently large, the action was taken somewhat reluctantly. However, a majority of the Board concluded that there is sufficient interest in kayaking to warrant a separate director for the activity.

Some possible functions for a kayaking director are:

- 1) We need a good program through which to train beginners.
- 2) We need a sufficient number of planned trips so that we can get to know each other. If we only boat in small, private groups it will be difficult to know any boater outside our group.
- 3) Boating permits are going to become increasingly hard to obtain for some rivers. A director working out of WMC would probably be better able to obtain the necessary permits.
- 4) We have been providing our own individual transportation on trips. This seems to work best. However, it is not known at this time whether we will be able to obtain sufficient gasoline to maintain this practice. If we are forced to use mass transportation, additional planning will be required.

Let's hear your ideas. The overall objective is to get a good program going that will benefit all WMC canoeists and kayakers. The following tentative schedule has been worked out. Your comments are welcome. You will notice that several trips still need leaders.

Tentative Kayaking Schedule for 1974

DECEMBER 8 Saturday	Kayaking at the Lodge. Leader J Dewell
FEBRUARY	Labyrinth Canyon - First warm weekend. Leader: Jim Byrne
MARCH	Pool Practice. Lodge Get-Together and equipment demonstration
APRIL	Pool Practice Dewey Bridge - Leader: D. Thomas
MAY 4-5	San Juan with the rafts
11-12	Weber River
18-19	Provo River
25-27	Dolores River - Leader: A. Dewell
JUNE 1-2	San Rafael - Leader: J. Dewell
8-11	Owyhee River - Leader: J. Herbert
16	Provo/Weber
23	Provo/Weber
JUNE 30 to JULY 7	Salmon River Camp - Leader: Jack Campbell
July 4 - 7	Yampa
13-14	Falls and Teton Rivers - Leader: Cal Giddings
21	Provo/Weber
24-28	Middle Fork Salmon
AUGUST 3-4	Ladore Canyon - Leader: D. Thomas
10-11	Provo/Weber
17-18	Alpine Canyon - AWA - Leader: Buzz Marden
24-25	Provo/Weber

AUGUST 31 -
 SEPTEMBER 2 Split Mountain

SEPTEMBER 8 Provo/Weber

15 Provo/Weber

21-22 Westwater - Leader: Lynn Gaylor

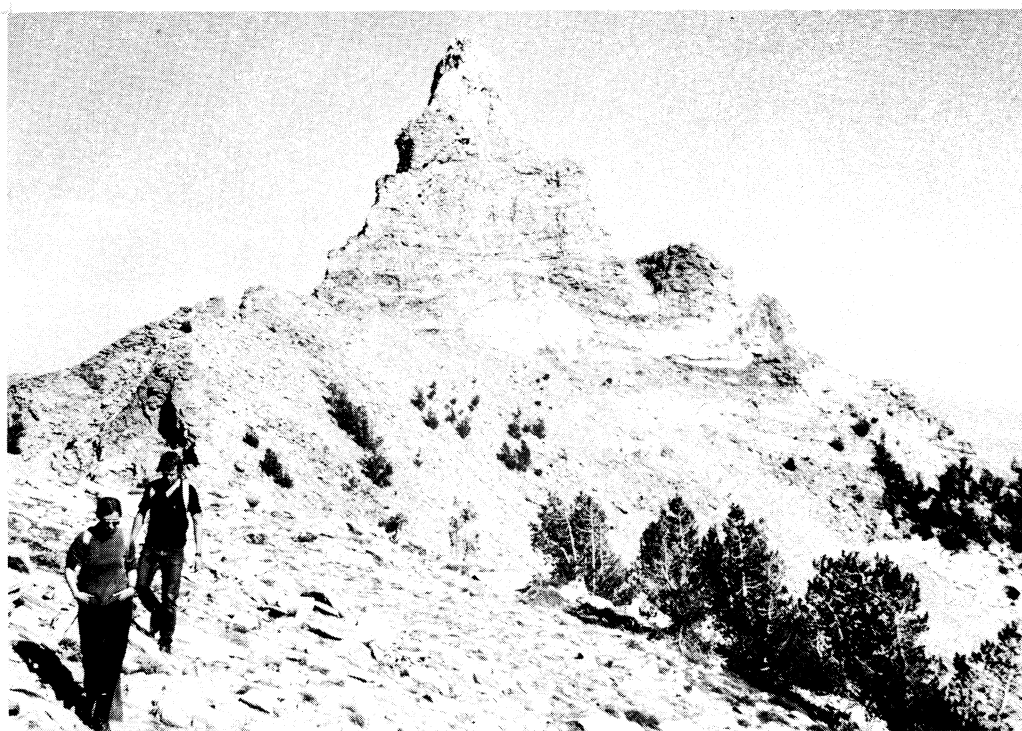
OCTOBER Westwater

May thru August Thursday evening on the Provo. Leader: J. Daurelle

Sunday practice on the Weber. Leader: J. Herbert

The picture is of Snowflake Peak,
 the Ruby Mountains, taken by
 Paul Horton.

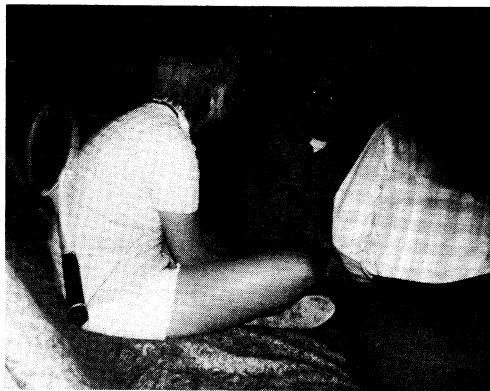
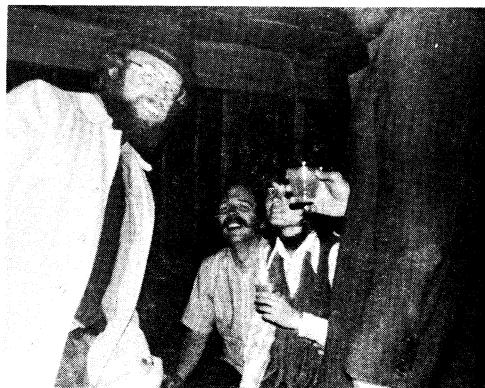
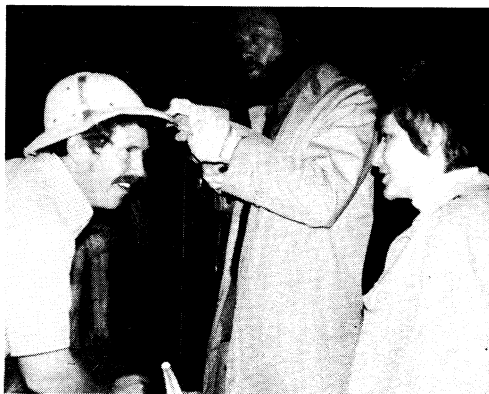
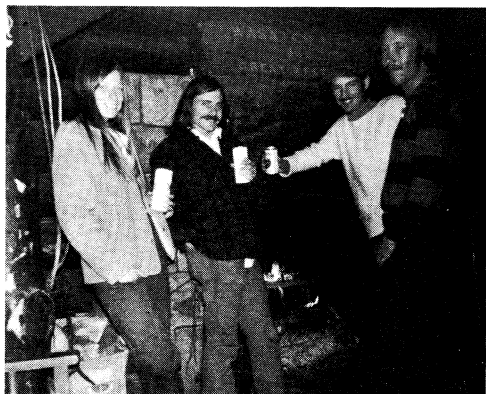
Mountaineering





*MALLOREDA
PARTY
at the lodge*





Canyonlands Experience

By Joel Gooch

Late October brought beautiful blue skies and pleasant weather to the Canyonlands of Utah as eleven WMC members hoisted backpacks and started down Bright Angel Trail to enjoy three days wandering through that fascinating country. Our goal was to find Indian ruins, to explore the intriguing natural architecture of the canyons, and to enjoy a sense of peace and relaxation that only the wilderness can give.

We met at Newspaper Rock early Saturday morning, October 20, and from there traveled over miles of dirt road by automobile to the canyon rim and trail head. Leaving the cars and roads behind we began the steep descent to the canyon floor.

Following the course of Salt Creek, we hiked for a couple hours until we came across an old log cabin. Here we paused to rest and investigate this old wilderness home. Back on the trail, we resumed our travels until we found a sheltered creek bed with good water supply. Here we established our base camp. The remainder of that first day was spent exploring the interesting formations of a side canyon adjacent to our camp, and climbing high on the canyon wall to enjoy a panoramic view of this geologic wonderland.

Suppertime brought out the usual backpacking cuisine, and one gourmet cook, Joyce Sohler, prepared a meal for three of us that would make a city chef proud.

Our nights consisted of sharing the welcome warmth of a campfire, casual conversation, and rediscovering the beauty of stars in an unpolluted sky. Frequent meteors added to the entertainment.

Sunday we set out with day-packs to explore the country. We were rewarded with the finding of many ancient cliff dwellings, petroglyphs, and pictographs. So well does this Anasazi architecture blend with the natural surroundings, that careful scrutiny was required to spot many of the dwellings. Built into the natural formations of the canyon walls and of the same materials, the structures demonstrate how people once lived in true harmony with nature.

We spent time exploring our findings, and as most of them are situated above the canyon floor, reaching them was frequently a challenge of rock climbing. At one site, most of us watched from below as only Don Colman and Ewald Leverkus scaled a vertical wall to explore a lofty structure.

A well-known pictograph which we were determined to find is a human-like figure painted on the wall of a small cave in red, white and blue, and known as "All-American Man". After searching unsuccessfully in the general area, we were about to pass it by, when Charlie French, who had gone off on his own to explore a high cliffside cave, shouted down that he'd found a colorful picture of a "Martian" preserved on the wall. That ancient masterpiece was indeed the object of our search.

The simple pleasures of drinking cold water from a stream tasting the fruit of the prickly pear, watching deer grazing on the canyon floor, and wading in a cool stream after a long hike back to camp completed a very enjoyable day.

Up before the sun on Monday morning, we began the long hike back to our cars, frequently pausing to appreciate the peaceful beauty of this land we were leaving.

Special thanks to Don Colman whose fine organization and leadership made this an enjoyable experience with something for everyone, as promised.

Participants were Ewald and Ryan Leverkus, Mel Davis, Fran Flowers, Mary Jo Sweeny, Charlie French, Ruth Hoppe, Mary Eysenbach, Joyce Sohler, Don Colman, Joel Gooch.

westwater revisited

By George and Lois Lowe

Welcome to Colorado the sign said - Jeez - we've come too far. Turn around, go back to the last exit in Utah and get off there. We did, and proceeded to wander around on the back roads at 2:00 in the morning trying to find the Westwater put in.

Even though the weather had us in a quandry all week, things started off pretty well that Friday evening of October 12, when two carloads of us left the ice plant on time. In

Bob Frohboese's car, pulling the U-Haul, were Mike and Bonnie Omana and Marlene Austin. George Lowe's car had Lois Lowe, Ken McCarty, Sue Collins and Kate Hedberg. Off we go with a stop in Green River at Ray's Tavern. Marlene wouldn't have it any other way and brow beat us until we stopped. The whole U.S. Army was there as well as the three girls from Green River. Needless to say, when the WMC girls walked in, they were beseeched by hungry eyes. A vigorous air hockey game ensued and it is unclear at this time who has the championship, however, a final puck off will be played at the next opportunity to determine the winner.

We left the Army behind and proceeded onward into Colorado somewhat slowly as the Ray's stop seemed to create a leaky condition in both cars. Many stops were needed and puddles always ran from beneath the cars. As already mentioned, after wandering around the last exit, there looms in the darkness a tremendous mudhole that looks like it would gobble up car and all. Back track and cross paths with two kayakers - Mike Mutec and Jack (Who are you) who have been exploring the next exit. It is conveniently marked in big bold letters - Westwater Area. The road went everywhere but where we wanted, so at 3:00 a.m. we gave up and sacked out in the middle of the prairie.

We awoke to a beautiful day with clear sky, bright sun and a heavy frost on the punkin. (Take that for what you will.) After a rousing breakfast of eggs benedict with wine and cheese sauce, we go exploring again. First, we posted a lookout on the freeway for Bob Weatherbee and Judy Ching who would be coming along in a blue VW. The lookout was something else. Can you imagine, driving along a free-

way in the middle of nowhere, no water in sight, and seeing a bearded nut (Bob F.) standing there in a down filled parka wearing a life jacket? The vigil, spelled by Mike Omana went on for about two hours, but since we had missed the VW by about 10 seconds the lookout was wasted effort.

The VW went by while Bob was walking up to the road. Judy saw him but apparently couldn't believe her eyes so the VW went on its way and found the river.

The chasing around went on all morning and we were finally saved when the rest of the kayakers (Cal and Steve Giddings, Roger and Terry Turnes) came looking and found us. It turned out you could drive through the mud-hole (it wasn't quite as ominous in the daylight). The Westwater exit had been conveniently mismarked by the Highway Department.

Sat up a shuttle car at the Cisco take-out and got everything else ready to go in the water and discovered it was too late to take the rafts down that day. The kayakers went ahead and made a run. The rest of us lolly-gagged around the rest of the day. Some took a raft upstream, portaged a sandbar and had a wild 100 yard ride down on some large ripples.

We killed a bottle of Tequila in about 15 minutes of which the first 10 were spent slicing the lime. (That may be a club record for the lime, not the Tequila). The rafts were then used for napping. Due to the Tequila record, Sue Collins found it impossible to remain on the raft and kept rolling off onto the rocks.

Contests of the afternoon included a rock skipping contest - Winner: George Lowe with 18 skips for one

rock. A clay pot making contest - Winner: Lois Lowe (She was the only entrant). A tree climbing contest - Winner: Bob Frohboese (he was the only entrant).

Since we expected a one-day trip, Saturday supper was going to be mighty sparse but we were saved when that great river ranger Vane Jones and his wife Bonnie went into Grand Junction and picked up some chow for us. We feasted on a gourmet meal of hot dogs and beans, topped by a marshmallow roast. Vane and his family joined in our feast. For evening entertainment, almost had a naked pile started but it petered out.

Had breakfast of blueberry pancakes Sunday morning and did a good job of cleaning out the kitchen supplies for the winter. Got onto the river about 10:00 with the kayakers, accompanied by Vane Jones, about one hour behind. Terry stayed to run shuttle.

The first excitement on the river were two topless nymphs from the University of Colorado downstream on the bank. Those rafts just won't turn! Apparently, when the kayakers came by, the nymphs were totally in the buff, at which point the kayaks made a hard left turn to hit the beach and engage in conversational intercourse. (We knew George liked kayaks for some reason).

We hit some good rapids before Skull and the kayakers caught up to us just as we were climbing down from scouting Skull. They roared through, the rafts roared through - all in good shape much to the relief of some who had other memories of Skull. The remaining rapids, Sock it to Me and Sock it to You, were wet! and wild! No tragedies.

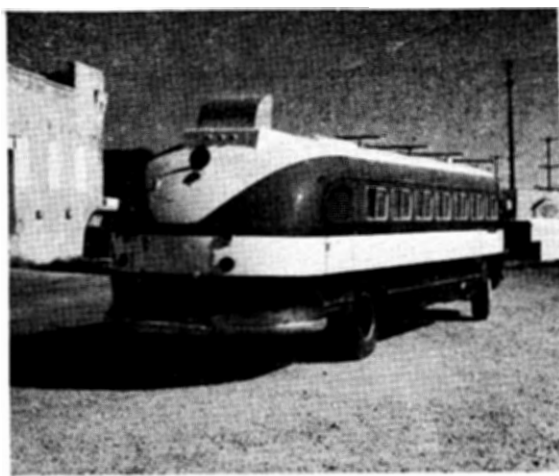
The trip finished up in good time and both cars arrived back at the ice plant at 1:00 a.m. even though Bob's car needed a Frito's Bean can to hold it together.



cannonball

Call lodge director for reservations.

SOLD *the*
wasatch





George Lowe on the 1st winter
ascent of the west face of the
Grand Teton.
Feb. 19-22 1972

Photo by Jeff Lowe



**TIMBERLINE
SPORTS, INC.**

3155 Highland Dr. Phone 466-2101
Salt Lake City, Utah 84106

A P P L I C A T I O N F O R M E M B E R S H I P

WASATCH MOUNTAIN CLUB
3155 Highland Drive
Salt Lake City, Utah 84106
Phone: 363-7150

NAME (Print) _____ TELEPHONE _____

Name of spouse (only if spouse wants membership also) _____

Address _____ ZIP _____

Occupation (Optional) _____

I hereby apply for membership in the Wasatch Mountain Club. I have attended two Club activities as required for membership, such as, hikes, ski tours, cave trips, camping trips, rock-hound trips, or work parties; and I am genuinely interested in the outdoors. Social events such as lodge parties, ski socials, etc. are not included in the definition of club activities qualifying for membership. I agree to abide by all the rules and regulations of the Club as specified in the Constitution and By-laws as determined by the Board of Directors.

I enclose \$ _____ dues and \$4.00 entrance fee. (Please note - from January through August the dues are \$6.00--spouse \$3.00--plus \$4.00 entrance fee. From September through December, the dues are \$3.00--spouse \$1.50--plus \$4.00 entrance fee.)

I am specifically interested in the items checked below:

Hiking__ Ski Touring__ Boating__ Mountaineering__ Caving__
Cycling__ Conservation__ Writing and editing__ Organizing social
activities__ Lodge__ Photography__ Other _____

CLUB ACTIVITIES ATTENDED:

1. _____ Date _____

2. _____ Date _____

RECOMMENDED BY: _____ Member _____

NOTE: _____ Director _____

When applying for membership,
the activities you attend must
have been within 12 months
prior to the date of application
to the Club.

Signature of Applicant

WASATCH MOUNTAIN CLUB, INC.

3155 Highland Drive/Salt Lake City/Utah 84106

BULK RATE
U. S. POSTAGE

PAID

SALT LAKE CITY, UTAH
PERMIT NO. 2001

Address Correction Requested / Return Postage Guaranteed

BOARD OF DIRECTORS

LEROY KUEHL , <i>President</i>	582-6890
<i>BETTY HENDRICKS, Secretary</i>	487-1929
<i>RON WEBER, Treasurer</i>	467-3194
<i>BOB EVERSON, Boating</i>	487-0029
<i>SAM ALLEN, Conservation</i>	486-6834
JANE DAURELLE , <i>Entertainment</i>	278-5025
<i>BILL ROSQVIST, Hiking</i>	295-0458
<i>MEL DAVIS, Lodge</i>	278-3174
<i>MARILYN BATEMAN, Membership</i>	466-3132
<i>PAUL HORTON, Mountaineering</i>	262-4695
DOTI MARDEN , <i>Publications</i>	278-1974
<i>DAVE HANSCOM, Ski-touring</i>	487-6065
<i>J. DEWELL, kayaking</i>	295-2754