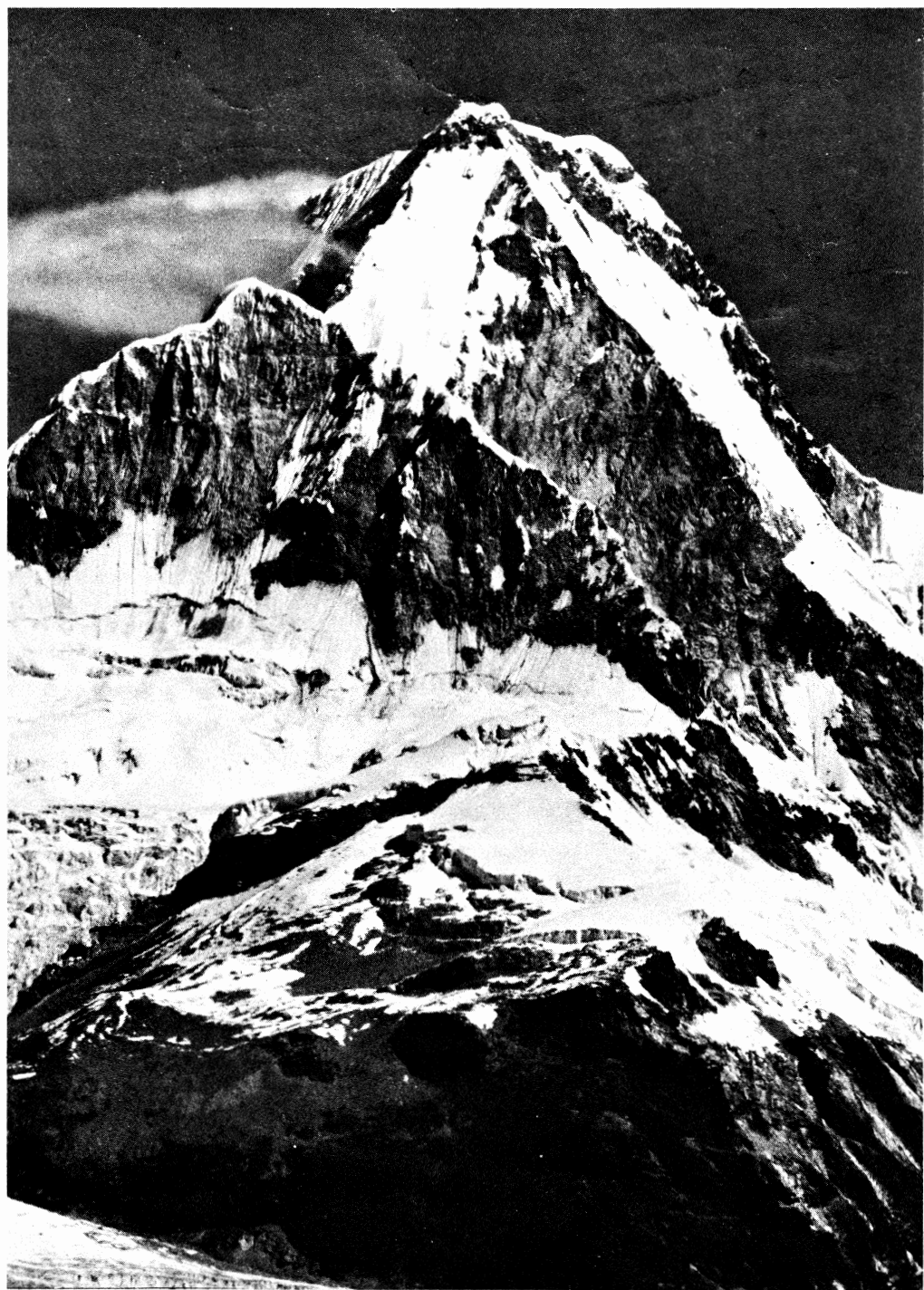


The Rambler

FEBRUARY 1973



Official publication of THE WASATCH MOUNTAIN CLUB Salt Lake City, Utah

club activities for feb 1973

REGISTRATION WITH TRIP LEADERS is important for ski tours since weather and snow conditions can cause cancellation or change in destination. It also aids in organizing car shuttles early enough to avoid delays. Register with the leader by some reasonable hour on the day before the tour.

RATINGS OF SKI TOURS (X,Y) describe the difficulty of the climb (X) and the skiing proficiency required to get down (Y). Both are rated from 1 to 6, in order of increasing difficulty. A detailed description of some popular tours is in the Nov. 1972 Rambler. Contact the leader if you are in doubt about your ability to do the tour.

Feb. 3
Saturday

RED PINE LAKE SKI TOUR - Intermediate (3,3) - This tour begins in White Pine Canyon and traverses around the ridge into Red Pine. The ascent through aspen and fir forests to Red Pine Lake is very pleasant, with views of Twin Peaks greeting you when you pause to rest. The powder is usually great for at least half of the descent so be prepared for a good day. There are some fairly steep sections, so Nordic skiers beware. Meet at the mouth of Little Cottonwood Canyon at 8:00 a.m. Leader: Dick Leining - 364-8982.

Feb. 3
Saturday

DESOLATION LAKE NORDIC TOUR - Beginner (2,2) - Once again we'll do this favorite of the Nordic skiers. In fact it's a good one for all types of equipment. The climb up Mill D North and into the Desolation Lake drainage is fairly long, but quite gentle. There's also some good skiing around the lake for those who want a little more challenge. Meet at the mouth of Big Cottonwood at 8:30 a.m. Leader: Phil Ryan - 355-1591.

Feb. 4
Sunday

MINERAL FORK SNOWSHOE TOUR - Intermediate (2,3) - After about a half a mile of switchbacks on an old mining road, we find ourselves in very gentle wooded terrain that is ideal for touring. The length of this tour will depend on the stability of the snow, since the upper part of the canyon is quite avalanche prone. Nordic skiers should know that the bottom section can be a bit treacherous. Meet at the mouth of Big Cottonwood at 8:30 a.m. Leader: Kermit Earle - 299-0526.

Feb. 4
Sunday

LAKE BLANCHE SKI TOUR - Advanced (3,5) - We don't seem to have much luck with this tour, but we'll keep trying. If conditions are stable, we can follow the ridge from Cardiff Pass to Mt. Superior and descend from there into the Lake Blanche drainage. This route has a great deal of exposure, so some mountaineering experience is necessary. The descent will probably be via Mineral Fork unless the snow is especially

good. Avalanche probes and cords are mandatory. For meeting time and place, call the leader, Dave Smith at 486-2680.

- Feb. 10
Saturday
- LOGAN CANYON NORDIC TOUR - Our second Nordic adventure away from the local scene will be to the north. The terrain in this area is much more suitable for this kind of touring, with rolling hills and valleys as far as the eye can see. We will explore a small part of this delightful area. This will be an all day tour over a gentle route, so you should be in fairly good shape. Plan on a 7:00 a.m. departure from the ice plant on Second North between Third and Fourth West. Registration is mandatory. Leader: Don Carlton - 487-6065.
- Feb. 10
Saturday
- GOBBLER'S KNOB SKI TOUR - Intermediate (3,3) - This tour is new this year, but looks like a good one. We will ascend Mill D North and follow the ridge to Gobbler's Knob. The view of Twin Peaks and its neighbors is spectacular all the way. The descent will either be the same route or down into Butler Fork, depending upon snow conditions. Nordics should be aware that the snow on the ridge is often quite wind blown and the descent into Butler is quite steep in spots. Meet at the mouth of Big Cottonwood at 8:30 a.m. Leader: Steve Swanson - 484-5808.
- Feb. 11
Sunday
- ADVANCED TOUR - This is the first "open tour" of the year. Rather than choosing the destination of the tour a month in advance, only to have to change or cancel it due to weather and/or snow conditions, the leader will decide a day or so beforehand what seems to be most feasible. It will be one of the difficult tours in the Wasatch. For information, call Fred Bruenger - 485-2639.
- Feb. 11
Sunday
- SILVER FORK SNOWSHOE TOUR - Beginner (1,1) - Enjoy a pleasant afternoon out of the smog on this leisurely tour. The length will depend upon the whims of the group, but the route will be up Silver Fork at least to the mine and maybe all the way to the bowl. Meet at the mouth of Big Cottonwood at 12:30 p.m. Leader Bob Weatherby - 582-6386.
- Feb. 11
Sunday
- SKI SOCIAL - Sunday night party time with Roy and Marily Keir. All WMC people are invited especially the new members. Food and drink available for a nominal amount. Fun starts about 6:00 p.m. Address: 1357 Emigration Street - 467-0265.
- Feb. 16
Friday
- CATHERINE PASS (from the lodge) Moonlight Tour - Intermediate (2,2) - It's been a long time since the lodge was used for a moonlight tour, but it should be an ideal place to start and end. The group will meet there at 7:00 p.m. before heading up through the firs toward the pass. The terrain is suitable for any kind of equipment if the snow is good, so THINK MOON, and come along for a pleasant evening in the snow. Hot drinks in the lodge afterwards will taste better than anything you can imagine. Leader: Jim Byrne - 582-5631.
- Feb. 17
Saturday
- SILVER FORK SKI TOUR - Intermediate (2,3) - This old favorite offers some of the best powder skiing for a moderate effort. From the top of the Millicent Lift, we climb to Twin Lakes Pass for a scenic break. From there it's just a traverse to the head of Silver Fork. The upper part of the bowl is quite steep and there can be avalanche danger, so

it's not a good one for Nordics unless you've mastered your deep snow turns. The lower section is very pleasant wooded terrain. Meet at the mouth of Big Cottonwood at 8:30 a.m. Any volunteers for leading this one? Call Dave Hanscom to register at 487-6065.

- Feb. 14
Wednesday ANNUAL ELECTION MEETING: We will hold our annual election meeting on Wednesday, February 14 at 7:30 p.m. in the Zion Lutheran Church, 1070 Foothill Drive. In addition to the business meeting, Dave Hanscom will show "Quiet Skis" - a short movie on ski touring made by the Bass Company.
- Feb. 17-19
Saturday-
Monday Lodge open for adults or families with teenagers only. Bring sleeping gear, food and cooking utensils, etc. Please make reservations with hosts - Peter and Anne Goss by Friday, February 16. Call 582-4380 after 5:00 p.m.
- Feb. 17-19
Saturday-
Monday JACKSON - - Once again we journey to this land of awesome vertical descents, smoke filled bars, and Mangey Moose. The occasion is our traditional Washington's Birthday Ski Trip. Register by February 3, sending \$5.00 to Jim McCullough, 1333 Brookshire Drive, Salt Lake City, Utah 84106. Trip will be lead by Tom Boyington. For more information, phone Tom at 364-9483 or Jim at 466-4061.
- Feb. 18
Sunday MILL D TO MILLCREEK NORDIC TOUR - Intermediate (3,2) - This tour follows the route to Desolation Lake for almost three miles and then branches off to the left to the head of Millcreek Canyon. The lunch stop will be on a peak between Big Cottonwood, Park City, and Millcreek with spectacular views of Wasatch, Uintah, Oquirrh, and other mountains. About eight miles of gradual downhill bring you to Log Haven, hopefully without encountering too many of those noisy beasts that sometimes frequent the area. Meet at the Movie at 8:00 a.m. for car spotting. Leader: Al Wickham - 328-1972.
- Feb. 18
Sunday ALTA TO WHITE PINE SKI TOUR - Advanced (3,4) - From the top of Alta's Germania lift, the route traverses behind Mt. Baldy and the flattened peak beyond with the strange structure on it. It then ascends to the saddle between American Fork Twins, which are the highest points on the entire range. This is one of the most spectacular spots in the Wasatch. The descent into White Pine is very steep at the top, so you should be a competent skier to participate. The tour is also very exposed to avalanche hazard, so probes and cords are mandatory. Register with the leader for details. Charles and Emily Hall - 277-1555.
- Feb. 24
Saturday AMERICAN FORK SKI TOUR - Intermediate (1,3) - It's hard to believe that we cancelled a tour because the road wasn't plowed, but it happened to this one in December. We'll try again since so many people wanted to do it. From the top of the Sugarloaf lift it's a short climb to the top of the head of American Fork Canyon. Then it's all downhill to the South Fork Ranger Station - 12½ miles worth!! The long gentle descent will take alot of poling (it's ideal for Nordics, but the top is quite steep) but you'll really

work up an appetite for dinner. Registration is mandatory so cars can be spotted the night before. For details call Dale Green - 277-6417.

- Feb. 25
Sunday
NORDIC TOUR IN THE OQUIRRH'S - Intermediate - We'll go west to look for good Nordic terrain this week. There are lots of possibilities to be explored in these mountains, particularly from the west. The goal will be to reach the ridge for views of Salt Lake and the Wasatch Mountains beyond. For details call Dwight Nicholson - 359-6178
- Feb. 25
Sunday
MILL F SNOWSHOE TOUR - Beginner (2,2) - From just below Solitude, Mill F Fork leads the tourer to Scott's Pass, overlooking Park City and the Uintah's beyond. It rises gradually amid the aspens, providing terrain that is ideal for snowshoers and skiers alike. Meet at the mouth of Big Cottonwood at 8:30 a.m. and enjoy a leisurely day with your leader, Shelly Hyde - 363-9564.
- Feb. 25
Sunday
SKI SOCIAL - - Denna and Bob Wright will be hosting this week's Social. The Wright's live close to the canyon so its only a short drive from the slopes - 6:00 p.m., and of course food and drink for a small fee - 3033 East 5800 South - 272-1177.
- Mar. 3-4
ASPEN
- Mar. 3
Saturday
MOUNT WOLVERINE SKI TOUR - Intermediate (2,3) - A traverse and a ridge run from Brighton's Millicent lift takes one to the summit of Mount Wolverine, which overlooks the Alta area. Various possibilities exist for a return route, but Wolverine cirque and the east slope down to Lake Mary are most popular. Snow conditions will influence the choice. Meet at the mouth of Big Cottonwood at 8:30 a.m. Leader: Burt Janis - 278-7291.
- Mar. 3
Saturday
ALBION HUT NORDIC TOUR - Beginner (2,2) - Since Nordic skiers don't need lifts, we will climb from the parking lot at Alta into Albion Basin and up toward Catherine Pass. Albion Hut is to the south along the ridge overlooking the spectacular scenery of the Little Cottonwood peaks. If we're lucky, we'll find the hut nestled among the firs just below the ridge. This trip is a good one for all type of equipment. Meet at the mouth of Little Cottonwood at 8:30 a.m. Leader: Jesse May - 486-1782
- Mar. 4
Sunday
LAKE MARY SNOWSHOE TOUR FROM THE LODGE - Beginner (1,1) - Here's another one of the Sunday afternoon tours that we promised. Meet at the lodge at 1:00 p.m. for a short hike up to the lake. What better way to spend a pleasant spring (maybe) afternoon?
- Mar. 4
Sunday
ADVANCED TOUR - This will be the second open tour of the year, and the leader promises that he will do as difficult a tour as is feasible with existing conditions. It promises to be quite a day! Call Dennis Caldwell for details at 278-2100.

Mar. 11
Sunday

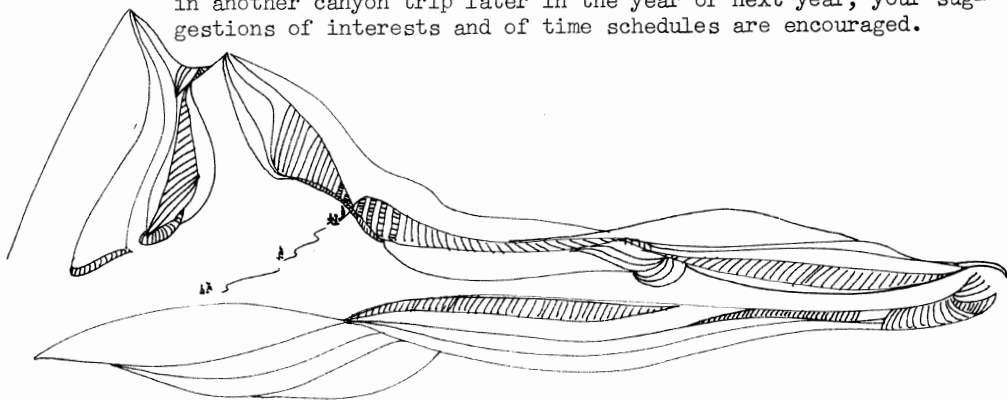
SKI SOCIAL -- Cal and Sue Giddings have just moved into their lovely new home. Come help them christen it - 6:00 p.m. Address: 1425 Perry Avenue - 521-9496.

Mar. 25
Sunday

SKI SOCIAL - - This is the last social for this season. Ann and Gale Dick will be hosting this event. Phone: 359-5764. Address: 1377 Butler Avenue. Food and drink available for a nominal cost. Fun begins at 6:00 p.m.

MAY

GRAND CANYON RIVER TRIP - This spring we plan to run the Grand Canyon in a combined trip with both club boats and a commercial venture. For some time we have speculated about running the Grand in our boats, and after much deliberation, discussion and serious exploration, it has been decided that this is the time. Participation in the trip in Mountain Club boats will require previous experience in a number of advanced river trips and extensive knowledge of the habits and non-habits of the river. It can not be over emphasized that this part of the trip involves a certain amount of hazard in small boats, and those signing up should be fully cognizant of this fact. The commercial trip will be similar to that of last year - running from Lee's Ferry to Temple Bar in 33 foot pontoon crafts in an 8-9 day trip. No experience is necessary for that portion of the trip. The present plan is that the Mountain Club boats will leave Lee's Ferry on May 6-7 and will float only as far as the Phantom Ranch by May 14. That will be the terminal point of the club boats. The commercial trip will leave Lee's Ferry May 12 - and arrive at Phantom Ranch May 14 in time to meet the club boats. Those who wish will continue with the commercial boats through the canyon - arriving at Temple Bar on Lake Mead May 20. The others will hike out from Phantom Ranch. Both trips provide an experience on the river and in hiking the canyons that can be described fully only in the doing and the seeing. The commercial trip will be conducted in cooperation with Dave MacKay of Colorado River and Trail Expeditions, Inc. and will cost \$200-\$225 exclusive of transportation (about \$50 additional for group transportation). Interested persons should contact Bob Everson 487-0029 or George and Georgia Randall 322-2360 for the commercial trip as soon as possible. If you are interested in another canyon trip later in the year or next year, your suggestions of interests and of time schedules are encouraged.



election meeting february 14

nominations

NOMINATIONS FOR 1973-74 WMC BOARD OF DIRECTORS

The following people have been nominated for next year's Board of Directors.

PRESIDENTDennis Caldwell

SECRETARYCarol Greenlee
Betty Hendricks

TREASURERRon Weber

BOATINGBob Everson

CONSERVATION. . . .Sam Allen

ENTERTAINMENT . . .Karen Weatherbee

HIKING.Bill Rosqvist
Lauren Williams

LODGEMel Davis

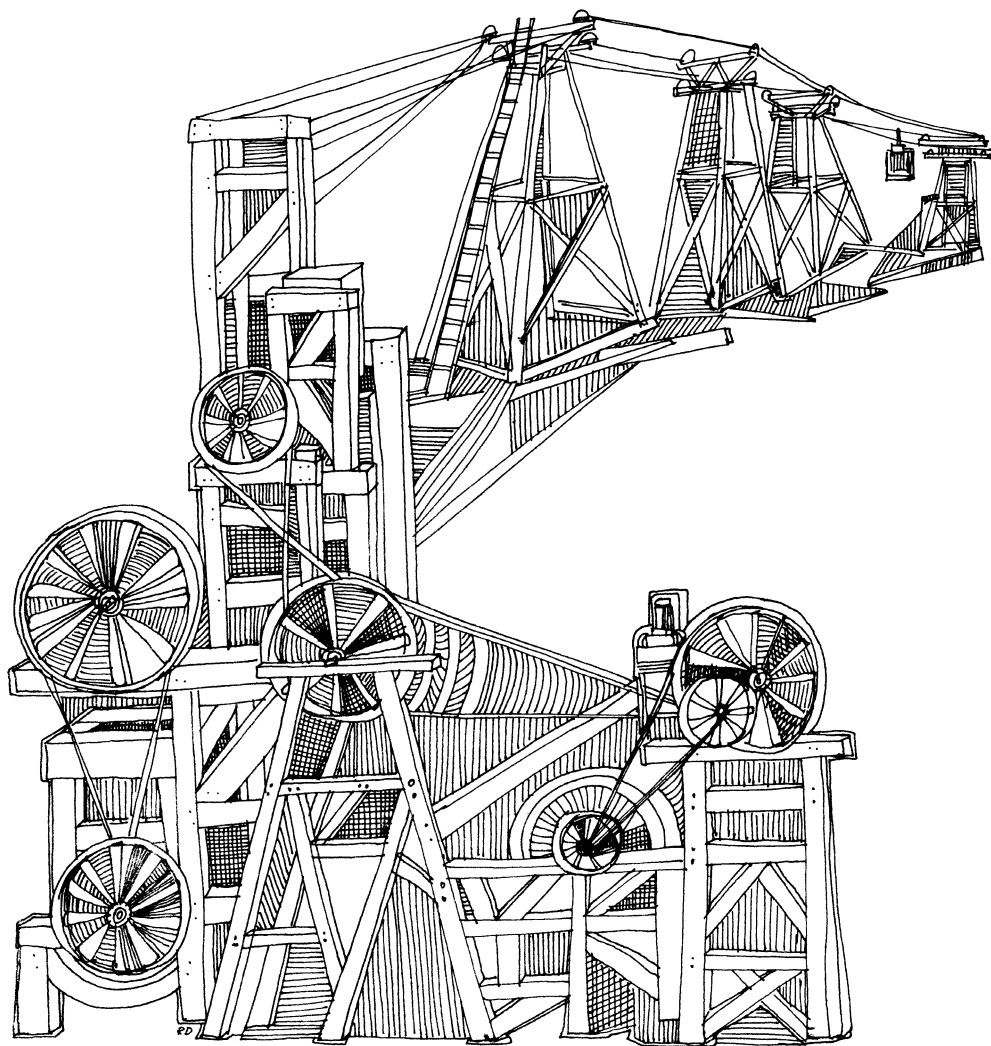
MEMBERSHIP.Jack Noy
Marilyn Bateman
Dorothy Smith

MOUNTAINEERING. . .Paul Horton

PUBLICATIONS. . . .Loraine Seager

SKI-TOURINGDave Hanscom

TRANSPORTATION. . .J. Dewell



**leaves
from the
old wasatch**

THE BUCKETS

In July 1903 a company known as Continental Alta Mines was formed out of the older Lavinia & Grizzley Mining Co., Regulator Mining Co., and Darlington Mining Co. The new company's General Manager, Henry M. Crowther, undertook to add an improvement of an unusual nature in the Alta mining community: an aerial tramway extending from the company's workings all the way down the canyon to Tanner's Flat where he was building a water powered mill to work the company's ore. The tram was to solve all the thorny transportation problems that plagued the company's predecessors; if the problem of transporting ore down canyon from Alta wasn't enough, the main workings of the Con Alta were high in Grizzley Gulch and getting ore down to Alta was as big a task as taking it the rest of the way down the canyon. The tram, however, could carry ore summer and winter, caring little about road conditions or individual temperament of the teamsters.

While the Con Alta tramway is all but forgotten today, it deserves to go down as one of the many monumental achievements in Wasatch Mountain history. It was four and one-half miles long and paralleled the old mule tramway on the north side of the canyon. It had 62 wooden towers with fixed cables carried on top of the arm of each tower, and moving cables carried in sheaves hanging under the arm. Each ore bucket was carried on a hanger, which, in turn, had pulley wheels that rode on the fixed cable. The moving cable was attached to the hanger to keep the bucket from running wildly down the tram, and to pull it back up again.

While the tramway was completed, probably in 1905, and run with success, it suffered from the organizational problems of its parent company. In 1907 Con Alta was reorganized as the Unity Mines Co., still under Crowther's direction. During this period the tram was little used and fell into disrepair. In December 1911 the Michigan Utah Consolidated Mining Co. was formed by local and Michigan financiers. It acquired most of the Con Alta properties, plus the wealthy City Rocks and Copper Prince mines in Grizzley Gulch, and the Utah Mines Coalition on the Big Cottonwood side of the divide. Michigan Utah began reconstruction of the tramway in 1912 and erected large ore bins at the Tanner's Flat terminus. Its properties were worked by lessees, but most ore was sent down via the tram. An interesting fact about the Michigan Utah mines is that the Utah Mines group included the tunnel at Lake Solitude which ran back toward Alta about 2,700 feet, where a raise of some 300 feet connected with the face of the lower tunnel of the City

Rocks about 2,400 feet from its portal in upper Grizzley Gulch. At the portal was a suspension bridge spanning a well-known avalanche path and connecting the upper tramway terminal with the tunnel. While it was intended to bring all ore out to the tramway, lessees working the Solitude tunnel actually took most of their ore down Big Cottonwood Canyon.

In June 1915 the Michigan Utah Mines Company was organized, taking over the former company's holdings and placing control into the hands of Judge Norman W. Haire of Salt Lake. For two more years the tramway buckets carried ore down the canyon and, emptied, glided back to Grizzley Gulch for another load. When winter snows closed the roads, the buckets, oblivious of Nature's hardships, still carried their ore to Tanner's Flat where the snows were less deep and teams could continue to work. When avalanches damaged a tower or two, they were quickly repaired and the buckets soon moved again. Near the end of 1917 they slowed down for several months, then stopped completely while a badly worn cable was replaced. Then they resumed their monotonous travels, only to be stopped again in January by massive avalanches. Two towers had to be completely rebuilt and temporary repairs were made to many others. The cables and buckets were buried over long distances; it was April before tramway operations could be resumed.

The year 1918 found rich new strikes being made in the Michigan Utah mines and tramway shipments approaching 100 tons per day. The following year the mining business slowed, but the tram continued to run. From that time the Alta mining business went downhill faster than the buckets. In 1923 Michigan Utah

was making assessments on its stock to keep the mines and tramway in repair. Then the buckets stopped. Patiently they waited, no longer adding their creaking sounds to the roar of the mountain streams. Patiently they hung, adding their dreamy immobility to the hypnotic shimmering of the aspen. Patiently they rusted, and took on winter loads of snow in exchange for the more important loads of ore they carried in better days. Snowslides came and knocked down a tower or two, but no longer did a crew of men come to the rescue. The buckets that fell stayed in the snow and rusted in dark silence until the spring thaws again exposed them. It seemed the once proud tramway was destined for an ignominious death, to become little more than piles of rust and rotted wood mingled with decaying aspen leaves.

Then, in 1938, a new era dawned upon Alta. A small group of men saw Alta as a skier's Mecca and decided to do something about it. The abandoned and neglected tramway fit into their plans nicely; they bought it for \$1,500. Twice that amount was spent to dismantle, move and restore the equipment, build new wooden towers and install the salvaged parts to create a new kind of a tramway. They called it a ski lift - the Collins ski lift. It was only 2,740 feet long, much less than one mile, and the buckets were gone, but the old tramway had a new lease on life and proudly carried skiers up the mountain for many years. Finally, years later, the Collins lift was rebuilt with the present steel towers, but to this day it reflects the basic design of the aerial tramway Henry M. Crowther built in 1904. And perhaps, just perhaps, it still has a part or two from that old bucket tramway of years past, a mark of its heritage, and certainly a Leaf From The Old Wasatch.

news from the board

Paul Horton is currently re-rating all the hikes. He is asking for complaints and suggestions and would especially like ideas for new hikes. Incidentally, Hayden Peak is the peak with the most complained about rating.

Dan Thomas has been huddling by his phone for the past two weeks waiting for an answer to his ad to sell the bus for \$2,000. Any buyers??

Odin, with frost in his beard, has finished lining up all of the clubs boating trips for next summer. Can you imagine that the Middle Fork of the Salmon has been filled for a month?

Winter parties at the lodge have been so lightly attended that they are losing money. Regretfully, the Board has decided there will be more winter parties when there seems to be an interest in having one. Ideas and comments are welcomed (shout Karen's direction) and one can be arranged.

Carol Greenlee

thanksgiving at the lodge

By Linda Withrow

About 11:00 on Thanksgiving Day, mobs of hungry people, from newborns to senior citizens gathered for a huge potluck Thanksgiving feast at the lodge. Some people walked up from their cars while others snowshoed, sleighed or came from the Brighton ski slopes after a hard half-day of skiing. Everyone that came had a magnificent time and those who didn't missed one. Hosts of the fun were Phil and Sally Nelson. A list of the participating families was, unfortunately, lost, but it numbered about 75 persons.

P.S. (from Mr. Withrow) Thanksgiving dinner at the lodge had a real holiday atmosphere. It was one of our nicest holidays ever. We would vote to promote this affair an annual event. The Nelson's deserve special thanks for their efforts.





white pine

Irwin Abrams

On that bright Sunday morning, not long after both the clock and the Salt Lake City temperature reached eight, a hearty band of ski and snowshoe tourers drove up Little Cottonwood Canyon. The party consisted of Kermit Earle, upon whose shoulders the responsibility of leadership devolved, J. Keuffel, Rocky and Sharon McDermott, Sid Smith, Steve and Mark Smith, George Swanson, Allen Taye, Jess May, Ernie and Gerri Abrams, Mark Elliott and Al Wick.

Shortly after we unloaded and climbed to the top of the roadside snowbank, we realized that the slight drainage wind coming down the canyon was making things cold. The wind gave enough incentive to get our equipment on and to get moving in something less than WMC average time.

We crossed the stream via a snow/ice bridge and started the steady climb to the lake. Soon the sun peeked over the ridgeline, but it was a cold, almost arctic sun. After the avalanche area, the sun began providing some warmth. The warmth of good companions and exercise did keep us from bitter cold.



PHOTO by Pat King

lake solitude

BEGINNER SNOWSHOE TOUR

by Franklin L. West, Jr.

December 30, 1972

This was a perfect trip. For many of us it was our first time on snowshoes. To make sure we would have a good time, our leaders arranged with the weather man for two feet of new fluffy powder to fall the previous two days, for the sky to be clear blue, and the temperature to be an invigorating 10°. A day couldn't be more delightful.

We met and signed in promptly at 10:00 a.m. at the parking lot in the mouth of Big Cottonwood Canyon, and then proceeded to the Brighton Store. After getting something warm to drink we climbed up the eight-foot high snow bank at the side of the road, donned our snowshoes, and headed off across

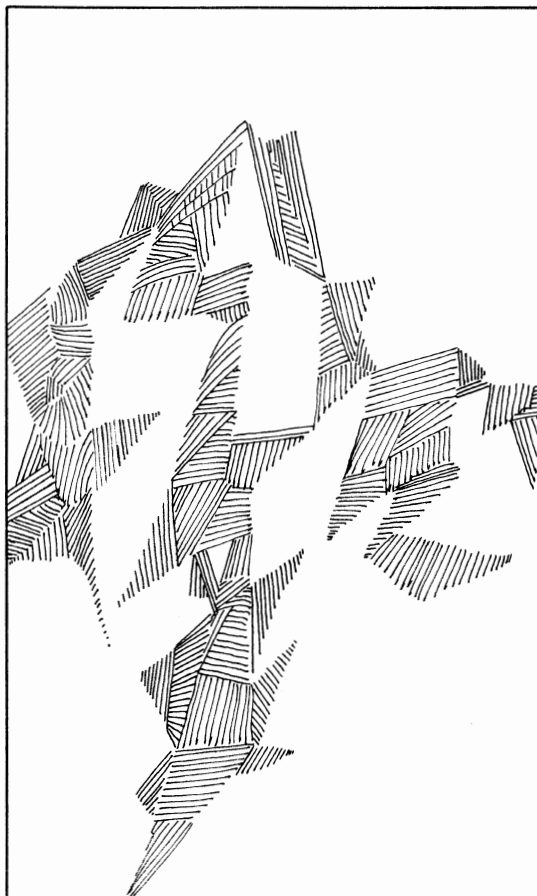
the newly fallen snow. Our tracks were the first ones. The trail went through the evergreen trees, west along the north end of Silver Lake, and thence up and around the gentle slope of Mt. Evergreen. We passed through a large patch of beautiful aspens, and then back into the evergreens. The landscape was radiant with sunshine, especially the back-lighted scenes. Then we proceeded around into Mill F South Fork and thence up to Lake Solitude, which is a choice spot situated in a small cirque.

We had lunch up on the hillside in the sun. Mel told us to sit on one snowshoe and put our feet and gear on the other. Else we might find ourselves up to our hips in snow. In spite of the 10° weather, many of us were quite thirsty. We also noted that we cooled off pretty fast while sitting.

On the return trip our more experienced snowshoers showed us how to go down a steep slope in the DEEP POWDER. The snowshoes would actually slide and float down hill. I wish I could do as well on skis.

Back at the Brighton Store we had some good hot food, and enjoyed ourselves visiting. It was a delightful day and we all went home with that good tired feeling.

Distance: two miles round trip.
Time: three hours. Elevation gain: 680 feet. Leaders: Mel and Clare Davis. Member showshoers: Oliver and Barbara Richards and their two children Stephen and Christine, Ruth Henson, E. W. Boyd - party of three, Jim Frese, Bob Weatherby, Franklin L. West, Jr., Maxine Angus, Yukio and Teddi Kachi and Betty Bottcher. Prospective member showshoers: Emil Lawton, Jean Anderson and George West.



**canyons
not for
sale!**

Sam Allan 486-6834
JACK R. LEE & CO. REALTORS
3466 HIGHLAND DRIVE

'south' park city west

by Jim Ure

Due to excess snow on the road up American Fork Canyon, the gorgeous 12½ mile ski tour had to be switched to a more accessible location. It was changed to a tour starting just south of Park City West.

After we all had assembled in the parking lot of Park City West, Milt Hollander quickly took a poll of the cross-country skiers as to which wax they were using so that he would know what wax to use on his own skis. After a few minor problems, such as, the wrong length skins, we got on our way.

It turned out to be a beautiful day. It was sunny and warm all day long except for a short period of clouds and cold weather up on top. This was in complete contradiction to what the weatherman had to say. As a consequence we all brought many layers of warm clothing and were peeling them off and putting them back on all day. Things like that, however, give one an excuse to take a short rest when one becomes very tired.

For the major portion of the tour we followed a narrow trail with a fairly gentle grade for about three miles. It had a few sharp turns and in a few spots we took a quicker route by going straight through the thickly clustered trees. These details were inconsequential and insignificant on the way up, but on the way down they came as a big surprise, especially to the untrained downhill skiers. In some

spots the trail had become fairly well packed, which provided for an exciting run down.

Well, even though we couldn't make the American Fork Canyon tour, the day turned out beautiful anyway with a great tour up-....----well, wherever it was.

Leader: Lyman Lewis. Downhill skiers: Jim Ure, Tom Dickman, Bitsy Clark, George Swenson, Lealard Q. Clark, Patrick Baudelaire. Nordic skiers: Milt Hollander, Marge Yerbury, Dixon Smith, George and Georgia Randall, Yukio Kachi, Howard Garber, Pat Clark, Sid Smith, Mark Smith and D. Provce.



news and notices

DEADLINE

....for the March RAMBLER is February 15th. Please have your articles and schedules TYPED and mailed to Ruta Dreijmanis, 1941 Woodside Drive, Salt Lake City, Utah 84117.

THANKS

-to Betty Hendricks for typing this month's RAMBLER.
-to Roy and Marilyn Keir, George and Georgia Randall for mailing the January RAMBLER.
-to Marty Snyder for typing and duplicating schedule insert.



Mt. Superior and Alta
by Alexis Kelner

wolverine cirque

by John Riley

On December 2, a group of nine people assembled for the beginner tour to Wolverine Cirque. The weather was clear and mild with every indication of a wonderful day. There were three snowshoers, one Nordic skier, and five people with downhill skis and skins.

The party elected to make the tour somewhat more difficult than the scheduled event by starting at the bottom rather than riding the Millicent lift. This decision out of the way, a few people decided to have coffee since we were assembled in front of the Millicent-Evergreen lunch room.

At last, the trek started up the hill toward the Twin Lakes dam. The weather became somewhat less than desirable when the party topped out above the Millicent lift with strong winds and wind-blown snow, but this did not last. The weather settled down to a partly cloudy, nice sort of day as the cirque was approached.

After a lunch and a too short period absorbing the wonderful view of the cirque and surrounding country, the party left to enjoy the reward of the downhill run.

The party consisted of Greta Read, Sherm Dickman, Dale Green, Don Colman, Virginia Hillyard, Karen Weatherbee, Ruth Henson, Elmer Boyd and John Riley.

thanks w.m.c.

As I anticipate my return to St. Paul in late December, my thoughts return to the fantastic summer and fall made possible by the Club. What a pleasure it has been for a native of the midwest flatlands to climb the fantastic Wasatch Peaks - Thunder, Twins, Dromedary, Superior, Pfeifferhorn and others. How thrilling it was to hike in the Tetons and to climb in the Wind Rivers on ropes with Dave Smith and Harold Goodro. And, how exhilarating it was to repeat some of the hikes as ski tours. Hiking, rock-climbing, and ski-touring were all made available to me by the Club.

I want to thank the many people who have helped teach me and who have shown me friendship throughout my stay in Salt Lake City. I hope to repay you by promoting the sports I have learned and the preservation of our Country's natural beauties in Minnesota. I also plan an "expedition" to the Wasatch for hiking and climbing next summer.

Besides Dave and Harold, special thanks go to Ray Daurelle, Lauren Williams, Barb Smith, Milt Hollander, Howell Gribble, Marty Snyder, Paul Horton, Bob (Park City) Wright, Marge Yerbury and Dixon Smith.

John W. Gottman

the grand canyon

by Debbie Hatch

The last car arrived at the Grand Canyon campground Wednesday night, or rather Thursday morning at five o'clock. Our fellow members were strewn about like corpses - frozen on stiff sheets of plastic. It was hard to decide which was worse - sleeping outside with the icy wind and snow blowing off the huge pines, or inside of the car, which was also cold (even though it was cozy). Sleeping, period, was found to be impossible. So the decision was to search the area over in hope of finding some warm restrooms, but unfortunately signs were posted - No Overnight Camping on These Premises! Twelve frozen people gathered together at 7:00 in mutual agreement to postpone breakfast until circumstances were more favorable (that meant warmer).

The first part of the Bright Angel trail heading down toward the Colorado River was a doozy, almost solid ice mingled with patches of mule dung. This didn't make us a bit

more sympathetic towards those mules that followed us that morning. Even though the mules had nailed on cramp ons to keep them from sliding, we still beat them down to Indian Gardens - including our four sets of bad knees and two very noticeable colds. Karen commenced to have a memorable breakfast of gasoline drenched banana bread, Virginia, a fresh egg, and Debbie, a baked apple - plastic al a mode (courtesy of the car heater). It was a very enjoyable breakfast under the huge yellow Cottonwood trees and things had begun to warm up...and down, and up...

The whole day long we had quite a time playing musical coats! It was cloudy and awesome looking. At lunchtime we met a fellow who walked a mile back to where we were to retrieve his garbage. It had blown away! We still admired his concern though. Finally we reached Salt Creek (which indeed, was salty) after crossing the Tonto Plateau. At once gorpe, sunflower seeds, and such, were brought out while Pat King tried to convince the twelve of us that Monument Creek, our destination, was just over the next hump. Indeed, four hours later it was! Our total for that day was four even sorer pairs of knees, and thirteen miles. What should come up next but a couple of friendly newly weds - that was until they found out that there were going to be a dozen visitors camping next to them. Then with all sincerity, they said, "Some real nice camping spots are farther down the river, around the next bend there." Nobody seemed to respond to their proposal; Bodies and packs sort of dropped to the ground and nobody rose until after Thanksgiving dinner. It was either the smell of Cold Duck after dinner or those fabulous turkey dinners that revived people! There must have been twelve different versions of turkey dinners: a Turkey Tetrozoni, a Swanson's TV dinner, tur-

key and gravy that came in a can the size of Little Friskies' Nibbles dinners, a Lipton special turkey soup with dirt...Don Colman had threatened to bring his rubber chicken, but he couldn't fit it in his pack (too bad). Everyone gathered around the Cold Duck to hear Gerhardt play his harmonica. None of us appreciated his talent as much as the newly weds next door though. They just loved it. The new Mrs. — sang one of Gerhardt's melodies the next morning while she washed the dishes. Between her singing and a crow squawking from every perchable cliff, everyone woke up, rolled over, and cooked breakfast in bed. Gerhardt kept himself and his breakfast well covered - didn't trust that crow flying overhead! Karen stayed at camp and rotated our wet sleeping bags while the rest of us explored Monument Creek down to the Colorado River. The river had been partially turned off the day before for Thanksgiving at Glen Canyon Dam and a bunch of college students in very small boats were stuck on a sand bar. They couldn't go over the bouldery strip of rapids until the river was "turned back on" again!

Later in the day we started for Hermit's Canyon and left the newly weds back in their cave. The Hermit camp had been a tourist camp before the area was made a park. We camped on the terraces furthest up from several troops of scobouts (B.S.A.'s, Tom gave us many lessons in 'ob' talk that night and the next morning too!). Water was down a steep, one half mile trail to Hermit's Creek. Almost everyone made it, including Don Colman whose wails of "I've got legs, I've got legs" had become more frequent. Then there were others (Chris and Pat) who eagerly returned to the stream a second time, for water crest, which didn't taste like watercrest, to make themselves a gourmet salad topped with artichoke heart merinade.

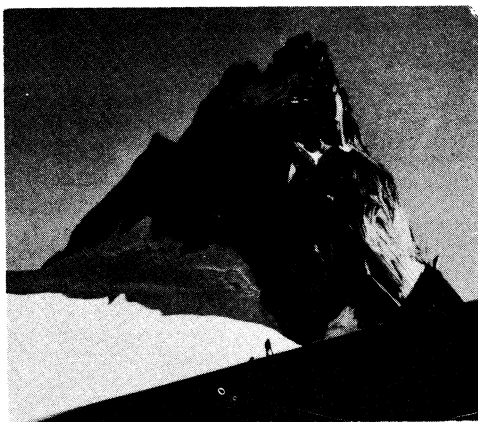
The Milky Way appeared brighter than many of us had seen it in a long time. Karen served hot buttered rum to warm people up. Many claimed afterwards to have seen "loop to loop" fall as stars. And Michael was busily doing "loop to loops" while sitting on the rock which supported a stove and twirling back to a stand again. He had four episodes of this, plus four very "earthy" dinner courses. Throughout the night many people, including the scobouts, visited our campsite and went stumbling on up the mountain side. Flashlights blinked out and then we were revisited again. At the same time people were snoring, talking, or grumbling, "Ahs" in their sleep.

It wasn't long until the scobouts were up stumbling and rumbling around again (God may bless them and their departure, which by that time had fully made us aware of morning!). It's one thing to zip down into the Grand Canyon and another to zap out! Hermit's trail up to the top climbed 5,000 feet in seven miles along cliffs and over boulder fields. At lunch everyone pulled out their remaining food and Tom promised that "until everything was eaten," he would "not leave" and he kept his word! After lunch someone headed down the trail to Dripping Springs to take a drip. The trail from the lunch stop up to the rim was steep but groomed with cobble stones and a wall along one side. Karen and Chris decided to make a grand entry into the parking lot by sprinting over to the cars. Then they hobbled around with everyone else for the night! We divided the group in half, have you ever seen six people and six packs happily crammed into a small Toyota Jeep? It's quite a sight!

Leader: Pat King. Members: Karen Weatherby, Virginia Hilliard, Debbie Hatch, Mary Jo Sweeney, Pat Baudelaire, Don Colman, Chris Kraft, Don Fox, Tim Dickman, Michael Maack, Gerhardt Henschel.

SIERRA DESIGN-CMI NORTH FACE - LOWA GALIBIER-VOYAGEUR CHOUINARD - KELTY DOLT

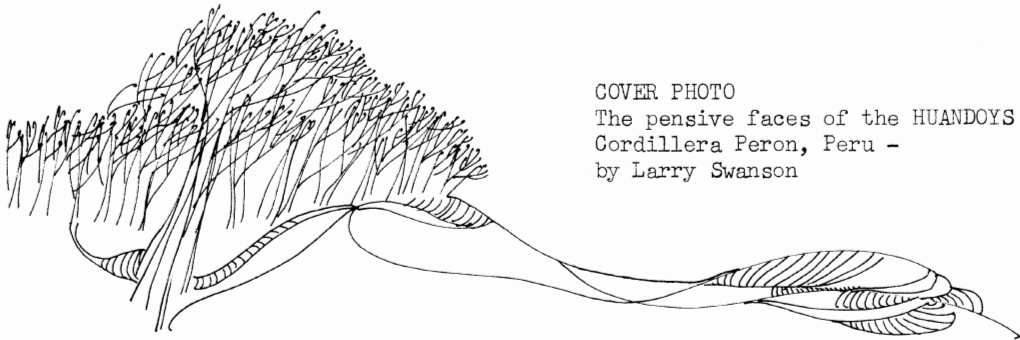
Specialists in lightweight back
packing, mountaineering and
ski touring equipment.



TIMBERLINE SPORTS

3155 HIGHLAND DRIVE / 466-2101

HOURS: Monday-Friday 10:00am - 9:00pm
Saturday 10:00am - 6:00pm



COVER PHOTO

The pensive faces of the HUANDOYS -
Cordillera Peron, Peru -
by Larry Swanson

Wasatch Mountain Club business is conducted only on the first and third Wednesdays of each month. At that time, and only at that time, is the mail opened, new membership applications voted on, dues payments recorded, address changes made, and all other business requiring board action conducted. All board members cannot attend all board meetings and although an effort is made to fill in during a member's absence, some business is held for action until the next meeting.

WASATCH MOUNTAIN CLUB

3155 Highland Drive, Salt Lake City, Utah 84106 Phone: 363-7150

APPLICATION FOR MEMBERSHIP

To the Board of Directors:

I hereby apply for membership in the Wasatch Mountain Club. I enclose the \$4.00 entrance fee and \$6.00 dues (spouse \$3.00). I have attended 2 outings (hikes, ski tours, cave trips, camping trips, rock-hound trips, work parties) and am genuinely interested in the out-of-doors. (Please note that social events (lodge parties, ski socials, etc.) are not included in the definition of outings.) I agree to abide by all the rules and regulations of the Club as specified in the Constitution and By-laws and as determined by the Board of Directors.

Name (print) _____

Outings attended: _____ Date _____

Signature _____

1. _____

2. _____

(If spouse membership please print name of spouse) _____

Recommended by:
Member: _____

Address _____

Director: _____

City _____ State _____

(Please note: you must have above signatures before your application can be presented to the Board of Directors.)

Zip _____ Phone _____

(Effective January 1 to September 1, 1973)

WASATCH MOUNTAIN CLUB, INC.

3155 Highland Drive/Salt Lake City/Utah 84106

BULK RATE
U. S. POSTAGE

PAID
SALT LAKE CITY, UTAH
PERMIT NO. 2001

Address Correction Requested / Return Postage Guaranteed

267-6100 54100

LOCALLY FREE

urned for
rier Endorsement

with use 3579

BOARD OF DIRECTORS

DENNIS CALDWELL,	278-2100
CAROL GREENLEE, Secretary	262-0690
RON WILSON, Treasurer	467-3194
BOB EVERSON, Boating	487-0029
SAM ALLEN, Conservation	486-6834
MARION NELSON, Entertainment	262-7748
PAUL HORTON, Hiking	262-4695
MEL DAVIS, Lodge	278-3174
JUNE ZONGKER, Membership	262-7092
DAVE SMITH, Mountaineering	467-9163
RUTA DREIJMANIS, Publications	272-1412
DAVID HANSCOM, Ski-touring	487-6065
DAN THOMAS, Transportation	484-3873

☆ GPO: 1970-O-401-756