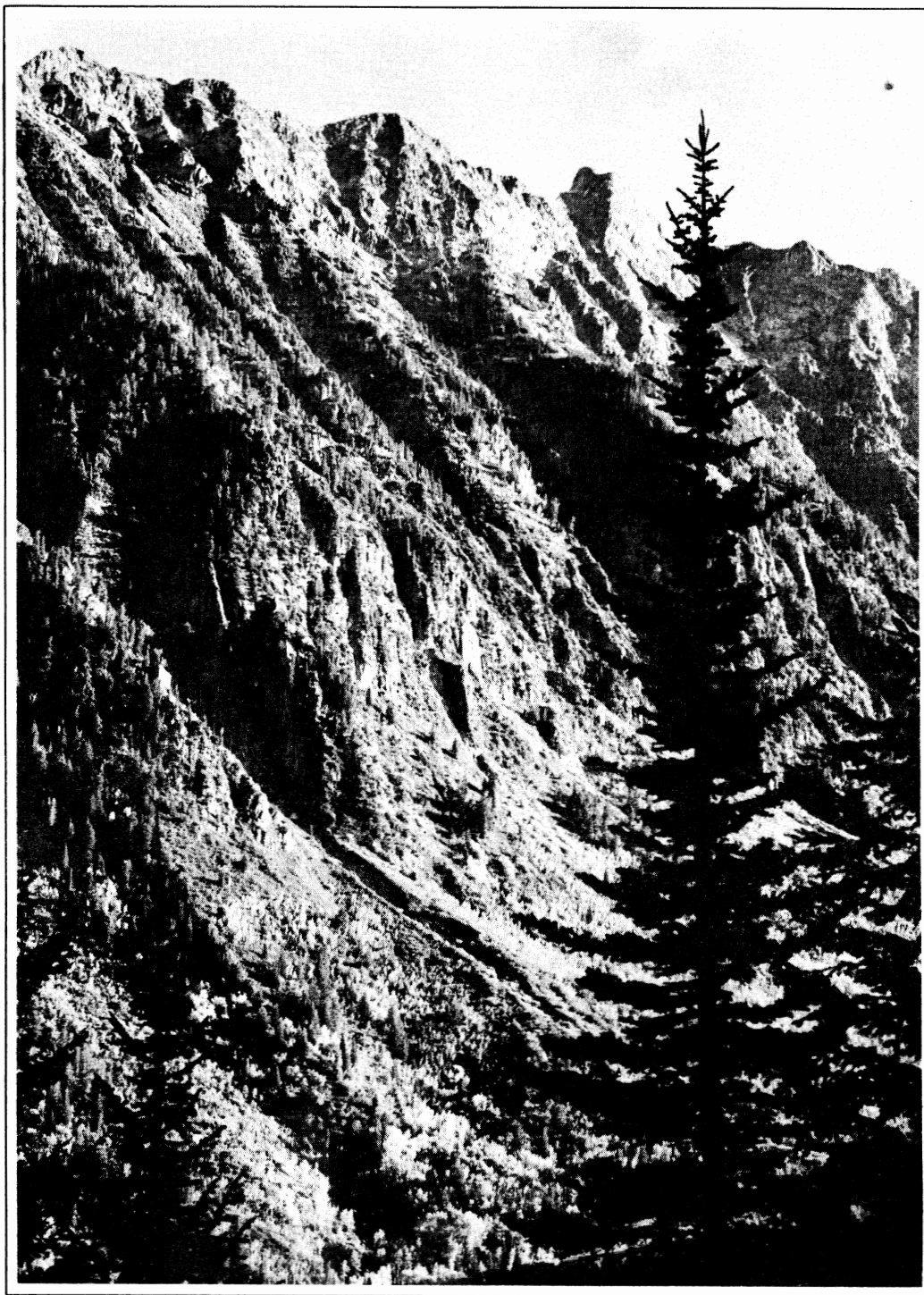


# *The Rambler*

NOVEMBER 1973



*Official publication of THE WASATCH MOUNTAIN CLUB Salt Lake City, Utah*

# Club activities for November 1973

REGISTRATION INFORMATION: Registration is generally not required for members participating in easy or intermediate hiking (Rating below 7.0). Unless specifically stated, advanced hikes (Rating above 7.0) require registration

with the leader. Adequate equipment is an absolute must. You cannot participate in these events if you have not shown your ability on other hiking activities and if you do not have adequate and well broken in boots with good Vibram type soles and suitable protective clothing. Special equipment like an ice axe etc, may also be specified and you are required to be able to handle such equipment. Remember that these restrictions are set for your own safety and that of your fellow members. For rules regarding participation of children consult the May Rambler 1972. Register for bus trips with the leader only by sending a deposit to the address listed. Leaders cannot register anyone without a deposit.

For bus trip cancellations less than a week prior to the trip, the Club must retain a \$5.00 registration fee.

NOVEMBER 4  
Saturday

BIG BEACON (WIRE PEAK) EL. 7100 Rating 3.0 - Come out for our most popular spring and fall hike. This will be the last official hike of the year, so it will give you a good opportunity to get together with other club members before the skiing season starts. Meet at the east end of Hogle Zoo parking lot at 8:30 a.m. Leader: Elmer Boyd - 466-7809.

NOVEMBER 10  
Saturday

DESERT CAVE EXPLORING TRIP - The cave visited will depend on local road conditions but will be about 150 miles from Salt Lake. A hard hat and head lamp are required and may be rented from the club through the leader. Expect a transportation charge of about one cent per mile. Meet at Simpson Avenue and 13th East at 7:30 a.m. SHARP. For other details, call the leader - Dale Green - 277-6417.

NOVEMBER 10-11  
Saturday -  
Sunday

Lodge Open

Cover by Charlie Swift

NOVEMBER 10  
Saturday  
TOURING DAY AT THE LODGE - The annual early season gathering at the lodge will start at 1:00 p.m. with a short tour. The afternoon at the lodge will be devoted to discussion of touring equipment, techniques, and waxing, an informal equipment swap/sale, and a display by Timberline. Supper will be available for a nominal fee at 6:00 p.m. followed by an evening of slides and movies. Join us for all or part of the day.

NOVEMBER 17  
Saturday  
TIMBERLINE NORDIC SKIING CLINIC - Meet at Timberline at 9:00 a.m. for a day of x-country skiing instruction.

NOVEMBER 18  
Sunday  
DESOLATION LAKE TOUR - Intermediate (2,2) The terrain in Mill D N is gentle enough for nordic skiers and snowshoers. Meet at the mouth of Big Cottonwood at 9:00 a.m. Leader: Dwight Nicholson - 359-6178.

NOVEMBER 21-25  
SKI TOURING WEEKEND - Dave Smith will lead a group on a long weekend of nordic tours, probably in Yellowstone or the Teton Wilderness Area. The plan is to use commercial accommodations and take tours every day, so you won't need to camp out in the snow. Call Dave for details at Timberline (466-2101) or at home (272-2354).

NOVEMBER 22  
Thursday  
THANKSGIVING DINNER AT THE LODGE - Bring your family, table service, bibs, burps, and thanks to the lodge again this year. Ski Brighton or shoe your own snow from the lodge. Dinner is planned for 4:30 p.m. This is a potluck, so call Phil and Sally Nelson (485-0237) to discuss the content of your pot and be prepared to reimburse the turkey providers.

NOVEMBER 22-25  
Thursday-Sunday  
THANKSGIVING WEEKEND - GRAND CANYON - Come enjoy Thanksgiving in the magnificent Grand Canyon. As of press time we do not have a leader for the trip, so if you want to assume the responsibility, please call Bill Rosqvist 295-0458. This is a backpacking trip, so proper equipment is necessary and you must be in good shape.

NOVEMBER 24-25  
Saturday-Sunday  
Lodge Open

NOVEMBER 24  
Saturday  
MILL F SNOWSHOE TOUR - Intermediate (2,2) Mill F Fork rises gently from just below Solitude to Scotts Pass. Meet at the mouth of Big Cottonwood at 9:00 a.m. Leader: George Randall - 322-2360.

NOVEMBER 24  
Saturday  
TIMBERLINE NORDIC SKIING CLINIC - Meet at Timberline at 9:00 a.m. for a day of x-country skiing instruction.

NOVEMBER 25  
Sunday  
WMC/TIMBERLINE BEGINNER TOUR - Call Timberline for details before 6:00 p.m. Saturday - 466-2101.

DECEMBER 1  
Saturday  
TIMBERLINE NORDIC SKIING CLINIC - Meet at Timberline at 9:00 a.m. for a day of x-country skiing instruction.

DECEMBER 1                   HONEYCOMB TOUR - Intermediate (2,3) The climb from the top of  
Saturday                   Evergreen Lift to the head of Honeycomb Fork is quite short,  
but the descent is quite challenging. The road into Silver  
Fork is narrow in spots, so skiers need to be able to handle  
deep snow to safely do this tour. For starting time and place,  
call Milt Hollander - 277-1416.

DECEMBER 2                   WMC/TIMBERLINE BEGINNER TOUR - Call Timberline for details  
Sunday                   before 6:00 p.m. Saturday - 466-2101.

DECEMBER 8                   TIMBERLINE NORDIC SKIING CLINIC - Meet at Timberline at 9:00 a.m.  
Saturday                   for a day of x-country skiing instruction.

DECEMBER 8                   MOONLIGHT TOUR - Catherine Pass from Brighton - Intermediate  
Saturday                   (2,2) Meet at the lodge at 7:00 p.m. for the first evening  
tour of the season. The group will return to the lodge for a  
hot drink and fireside conversation after conquering the  
snowy mountainsides. Leader: Oscar Robison - 278-3923.

DECEMBER 9                   WMC/TIMBERLINE BEGINNER TOUR - Call Timberline for details  
Sunday                   before 6:00 p.m. Saturday - 466-2101.

DECEMBER 9                   ADVANCED TOUR - We'll do Lake Blanche if conditions permit.  
Sunday                   Details in the December RAMBLER.

**REGISTRATION WITH TRIP LEADERS** is important for ski tours since weather and snow conditions can cause cancellation or change in organizing car shuttles early enough to avoid delays. Register with the leader by some reasonable hour on the day before the tour.

RATINGS OF SKI TOURS (X,Y) describe the difficulty of the climb (X) and the skiing proficiency required to get down (Y). Both are rated from 1 to 6, in order of increasing difficulty. A detailed description of some popular tours is in the November 1972 RAMBLER. Contact the leader if you are in doubt about your ability to do the tour.

WINTER SEASON \* \* \* WMC LODGE

Tired of lift lines and high price of lift passes? Make the lodge your headquarters for cross-country skiing and snowshoeing.

Available overnights, week-ends, parties. Main Floor Lounge. Two dormitories. Gas heating and cooking.

No charge to members. Minimal charge to non-member groups.

Call lodge director for reservations.

# news and notices

## THANKS TO

- .....George and Georgia Randall for mailing the November RAMBLER.
- .....Betty Hendricks for typing help.
- .....Pat Milligan for mailing the October RAMBLER.

## WASATCH TRAILS

Please send postpaid _____ copies of WASATCH TRAILS for which I enclose \$ ____.		
Price \$1.50 each.		
Name _____		
Address: _____		
_____	_____	_____
City	State	Zip

to: Bill Rosqvist  
281 South 1000 East  
Bountiful, Utah 84010

## Rambler Deadline

.....for December is Thursday,  
November 15. Please have  
your articles and schedules  
TYPED and mailed to:  
Attention: RAMBLER Editor  
Wasatch Mountain Club  
3155 Highland Drive  
Salt Lake City, Utah 84106

THIS IS NOW THE PICTURE -- on  
pictures. If you have a color  
print, negative or slide which  
you think might turn out well  
in black and white, please consider  
this: the WMC will pay for the  
conversion and enlargement if  
your picture is accepted. So  
please send it in! Deadline for  
such pictures will be the 8th of  
the month, to allow time for pro-  
cessing.

IF YOU WANT photographs, slides,  
negatives, artwork, etc. returned,  
please indicate.

REMEMBER THAT we need black and  
white glossies too!

If you have any particular complaints,  
please write to the Board of Directors,  
Wasatch Mtn. Club, 3155 Highland Dr.,  
SLC 84109.

Wasatch Mountain Club business is conducted only on the first and third Wednesdays of each month. At that time, and only at that time, is the mail opened, new membership applications voted on, dues payments recorded, address changes made, and all other business requiring board action conducted. All board members cannot attend all board meetings and although an effort is made to fill in during a member's absence, some business is held for action until the next meeting.
--

## From the President

by LeRoy Kuehl

### A Time for Action

For over a decade, the Mountain Club has been deeply involved in an effort to establish a wilderness area in the vicinity of Lone Peak. We have now arrived at a critical juncture in this effort, and your support is urgently needed.

Bills to establish a Lone Peak Wilderness Area have been introduced in Congress by Senator Moss (bill S-29) and Congressman Owens (bill H-1602). Both are excellent bills in that each would include three critical regions in the Wilderness Area: the summit of Twin Peaks, the region surrounding Box Elder Peak, and the western portion of White Pine Canyon. The Owens bill would, in addition, include the eastern portion of White Pine Canyon and is, consequently, the one which we favor. Hearings on the Owens bill will be held during the next few weeks (you will be notified by mail of the exact time and place); it is important that we be well represented at this hearing.

The inclusion of the Twin Peaks summit and White Pine Canyon in the wilderness area are strongly opposed by Snowbird, since both of these areas play a part in their future plans for high density ski development. Yet inclusion of these areas in the Wilderness is very important for the following reasons:

and without causing insoluble traffic problems.

2. The inclusion of White Pine Canyon and the summit of Twin Peaks would not prevent further expansion of Snowbird. They could, for example, still expand into American Fork Canyon.

It is important that our representatives in government be reminded prior to the hearings of our desire that the Lone Peak Wilderness Area be established and that they be made aware of the importance of including White Pine Canyon and the summit of Twin Peaks in this area. It is, of course, equally important that these letters be reinforced by statements at the hearing. Letters should be sent now to one or more of the following:

Representative John Melcher  
Chairman, House Committee on Interior and Insular Affairs  
Room 1641 Longworth Building  
Washington, D.C. 20515

Governor Calvin L. Rampton  
State Capitol  
Salt Lake City, Utah 84114

Senator Frank E. Moss  
Senate Office Building  
Washington, D.C. 20510

Senator Wallace E. Bennett  
Senate Office Building  
Washington, D.C. 20510

Congressman Wayne Owens  
Room 222 Cannon Office Building  
Washington, D.C. 20515

1. The accessibility of White Pine Canyon offers a unique opportunity for winter and summer use as a hiking, snowshoeing, scouting, hunting, and fishing area. Its inclusion would give the Wilderness Area a balance between easily accessible and difficultly accessible regions.
2. If Twin Peaks and White Pine Canyon are excluded from the Wilderness Area, future ski resort development could open large parts of the remaining Wilderness (e.g. Red Pine Canyon) to downhill skiing from lifts.
3. Exclusion of Twin Peaks and White Pine Canyon would make possible the placement of ski lift towers and terminals which would be visible from much of the Wilderness Area and beyond.

Snowbird will argue that the American Fork Twins and White Pine Canyon are necessary for their continued economic development. Two points may be made in answer to this argument:

1. The recent Alta/Little Cottonwood Canyon Study commissioned by the Salt Lake County government (the Eckbo, Dean, Austin & Williams and LeBlanc & Company study) clearly demonstrates that only a small fraction of the development contemplated by Snowbird can be accommodated in Little Cottonwood Canyon without endangering the water supply



# Beauty and the Beast



## **A Poster Sale to HELP SAVE OUR CANYONS**

In an effort to raise funds for numerous Save Our Canyons projects the Citizens Committee to **SAVE OUR CANYONS** is making available two posters depicting the beauty and the ravages along the Wasatch Front.

Both posters are from photographs by Alexis Kelner. They are approximately 22 x 35 inches and are printed in black and white. The mountain scene is printed on high gloss Kromekote paper.

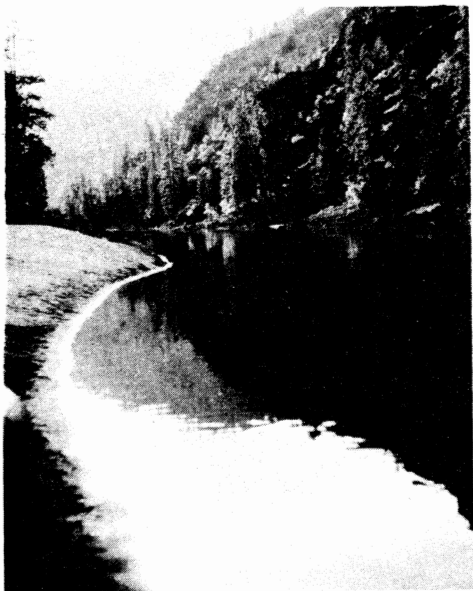
These posters will be available about November 5 at \$2.00 each or both for \$3.00 at the following locations:

**ALEXIS KELNER**  
1201 First Avenue  
Salt Lake City, Utah

**TIMBERLINE SPORTS**  
3155 Highland Drive  
Salt Lake City, Utah

**KIDS SHOE STORE**  
4736 Highland Drive  
Holladay, Utah

# *Salmon River*



*Trip*

*July '73*



by Bob Everson



## SALMON RIVER TRIP

By Bob Everson

For the second consecutive year we were forced to cancel the Middle Fork Salmon River trip due to a light snow pack in the Idaho mountains and the resulting low water run-off. Most of the original participants were able to make the substitute trip on the Main Salmon, but unfortunately, a few could not manage the three additional days required.

Early morning before departure, Jack Campbell phoned from Salmon, Idaho, to say that he and a mirage from rivers past, Mike Gallagher, wanted to join the trip as far as Corn Creek where the road ends. Fine. See you in Salmon Saturday morning.

After a last minute scramble for life jackets and paddles (the makers of which are becoming extinct) we were off for

the River of No Return. The rapid commercial transporation put us in Salmon with much of the night to spare which prompted individual decisions of whether to stay in the bus and sleep, or to drink coffee, eat an early breakfast, etc. at the only open cafe. Some did some of one and some of the other and the others did all of one or all of the other. So to dawms-early-light and on to the river. Jack and Mike arrived. "Hi, Mike, it's been a while. What have you been doing?" "Not much. Moved to Denver, got married, you know. Been doin' a little canoein'." Jack would be in his kayak-modified C-1 canoe (can-ak, kay-noe?).

The river was low this year and rocks were high. The air temperature quite warm, the water refreshing and that refreshment frequently came in buckets and often from all directions - simultaneously!

Carolyn found the water suddenly refreshing after hitching a ride on the parallel decks of Mike's and Jack's vessels, whereupon they paddled off in opposite directions - simultaneously! Renu enjoyed....well, see accompanying photograph! Rick preferred to meet the liquid refreshment (river) head-on bronco-style astraddle the raft bow (other liquid refreshment he, and others, preferred to meet with salt and lime). Some such as Bob F. met the river unexpectedly and then tried to ride the bottom of the raft while it was still upright - nonconformist!

There were campsites with odd names or near such places as Owl Creek, Gun Barrel Rapid, Little Devil's Teeth Rapid, (Rich stitches up Judy's finger and advised on Bob A's broken toe - gad, just the beginning of the trip, Bobbie and Clyde's Hawaiian chow mein, fantastic - Odin ceremony with amazed river-passers-by - See Photo) Allison Ranch (good bathing pools, Mel's fresh fish great at happy hour), Rhett Creek (raced a commercial outfit for campsite - Won, lots of time to swim, nap, kayak, muse), Rabbitt Creek (Susie's fresh apple sauce, the Frohboese's stuffed grape leaves, Rick's plow, first sand downhill motorcross, last of the ice), Wind River Pack Bridge (back to the road and "civilization" again, talent???? night, last sand downhill motorcross and hill climb), and finally Short's Bar (hot! Anderson hitched to Riggins earlier by kayak and camper to meet us with cold beer, John's enthusiastic crew overshoots Short's Bar, Riggins residents swarming over the beach, little black dog caught in current - Dave Mansker to the rescue - dog bites Dave, Dave hitches ride with nymphette on motorcycle for fresh "supplies", most of group to Saturday night in Riggins - Bobbie wants to go back again Sunday night, Ken and Bob ponder all night - watch to safeguard equipment and crews from late-celebrating Riggonians, finally, quiet - sleep).

We had packed the boats and stacked the equipment the afternoon before, so all that remained was to load when the bus arrived Sunday morning. The bus pulled laboriously out of Short's Bar and we waved to Jack and Mike back on the beach waiting for their shuttle. Wait! Jack and Mike? They were suppose to leave us back at Corn Creek some 100 miles up river where old MAYTAG blew her upper bladder!

As the bus rolled on to SLC through Caldwell, Boise, Mountain Home, we dozed, chatted, celebrated the last happy hour, watched the country roll by and tried to relive the last week without the efforts of paddling out of the eddies, cleaning the cooking gear and packing the boats. We remember how easy it was to run some of the "tough ones" such as Salmon Falls, Elk Horn, Ruby and Lake Creek Bridge when it was done right. We also remember the power of the river when Mike's boat was pulled over the hole in Big Mallard, and how we had to pull out of the current when we swam the rapids. Hey! Someone said that this was the first time the Club had run Ruby Rapid and Lake Creek Bridge. We did a first! But what about that one they talk about - Bob's Riffle? Heard someone turned a boat over there once...

Who will ever forget John Herbert's Dutch-oven-baked biscuits with butter and honey. John should be required to cook on all river trips!

Some of us also remember a strange boat with a stranger crew from whence could be heard the voices of Noel and Stew reciting "The Cremation of Sam McGee" and "The Shooting of Dan McGrew". However, those iterations were frequently interrupted by a barrage of cherry pits spewed from the crew of the Mansker contingent. From the same literary boat came the melodious lines:



# pfeifferhorn

Sunday, September 30, was warm and clear -- a perfect day for the Pfeifferhorn. The warmth was welcome because of the usual snow on the trail this time of year, even as the aspens are at their foliage peak. Half the group remained at Red Pine Lake, the others continued, not without trepidation for those on their first ascent, to the summit of the Pfeifferhorn. The valley was clear, and the forests below looked like Persian carpets. You should have been there.

Participants: Mary Miller, Ann Barr, Mike Hendrickson, Keith and Paula Biesinger, Jim Hathaway, Wick Miller, Mary Eysenback, Pat Convery, Charles French, Clix Byrne, Harold Bingham, Lou Hansen, Beth Reese, Cathy Kreuter, Joyce Schler, Carolyn Andree, Tricia Swift, and Charley Swift (leader).





Charlie Swift 14





Dedicated to the preservation of our Wasatch Front Canyons

Dear Fellow Members:

Once again the Wasatch Mountains need your help. Early this year, when SAVE OUR CANYONS made an appeal for financial contributions your response was gratifying. Today, rather than asking for your money we are asking for your personal dedication and involvement.

Throughout the past year several agencies have been studying the problems associated with canyon development. As a result of these studies a number of reports have become a matter of the public record:

- Alta/Little Cottonwood Canyon Study.
- Little Cottonwood Canyon, An Interdisciplinary Study.
- Uinta National Forest Land Use Plan.
- Alternatives for Land Use-Little Cottonwood Canyon.
- Water Pollution and Recreational Use in Little Cottonwood Canyon.

In almost all respects these various studies are supporting our views that current uncontrolled canyon development will have adverse effects on our local canyons.

The end of 1973 will be a crucial time for the Wasatch Front canyons. Many public hearings will be held. Among them:

- Lone Peak Wilderness Hearing sometime in November.
- Little Cottonwood Canyon hearing sometime in November.

SAVE OUR CANYONS will keep you informed of important issues with the publication of timely abstracts and newsletters. We also try to maintain a complete library of canyon studies and other pertinent documents for your use.

Decisive canyon victories can be won this November and December, but only if you become informed and actively participate in the public hearings. To paraphrase Smokey: ONLY YOU CAN HELP SAVE OUR CANYONS!!

Sincerely,

Alexis Kelner

**Citizens  
Committee to  
Save Our Canyons**





Odin

## ODIN - WHO?

The name of Odin, All-father, not a household word. Odin - who? Odin first encountered the Wasatch Mountain Club when he heard reverent song beseeching him for safe voyage on the Salmon River circa 1969. The hymn leader of that solomn group was one Gerald Powelson who at that time was Director of a group of W.W. II Dragon Ships.

Since that time those who have put upon the rivers with the WMC have paid homage to Odin, and Odin has seen them safely through (in most cases). And Odin has made himself known. In the same year in Cataract Canyon with the faltering WMC Dragon Ships running low on fuel and Mead, Odin disguised himself as an old man with snow-white hair and beard. With his wife, Frigg, and his great eight-footed steed, Sleipner (disguised as a modern cabin cruiser), Odin approached the faithful Dragon Ships with a gift

of petrol. Since his last batch of Mead was not yet prime he substituted a gift of a case of "ice cold beer." Oh, the joyous voices reverberating against the canyon walls! One Lloyd McMahan was heard to say, "So that's what he looks like". Odin often speaks of that time with the other gods in Valhall. But then when one J.B.Dewell was heard to utter, "Odin is a fink" on the Salmon River circa 1971, Odin was forced to overturn the valiant leader's Dragon Ship in a gigantic wave as a reprisal. That Dragon Ship still bears the name of that fearsome obstacle - Bob's Riffle. Odin seldom speaks of that incident! Buzz Marden knows of Odin in Alpine Canyon when his tiny craft was righted by the Mighty Hand, but as Jim Byrne knows over confidence is not tolerated, and Buzz finally had to be dumped. Some say that Buzz even looks like Odin, but then others say that those with beards look alike.

[illegible]

Odin rose to the utmost pinnacle of the Norse gods. Most worship Odin for his martial prowess and as the receiver of slain souls into Valhall. The Vikings and WMC beseeched the influence of Odin's powers in adventure on the waters and in safe voyage to the 'voyages' end. But for all of his martial fame Odin is more distinguished for his wisdom and as a diety of art and culture. For did not Odin sacrifice one of his own eyes to obtain that wisdom? - There beneath the wonderful ash-tree, Ygdrasil, which touches and binds all the worlds together in the cycle of life, whose three roots reach Hell, the sightless depths where the dead live, Jotunheim, the dreary home of the giants, and Midgard, the dwelling place of men; whose branches spread over the whole earth and whose

uppermost branches brush against Valhall itself - there beneath Ygdrasil's branches Odin exchanged one eye with Mimer (Memory) for a draught of the sparkling waters in the pool of Wisdom. But many of you may be more familiar with Odin by the Teutonic name Woden which survives in Wednesday. And you ask how do I know all of this? Should I not know of these things, for am I not Bor, some of Bure and father of Odin?



By J. Calvin Giddings

The Falls River tumbles out of the Southwest Yellowstone and leaves the road for 16 scenic miles. It is a beautiful candidate for national wild river status. While it drops 30 to 50 feet per mile, it is only class III (on the international scale of VI), providing you stop in time for the two waterfalls!

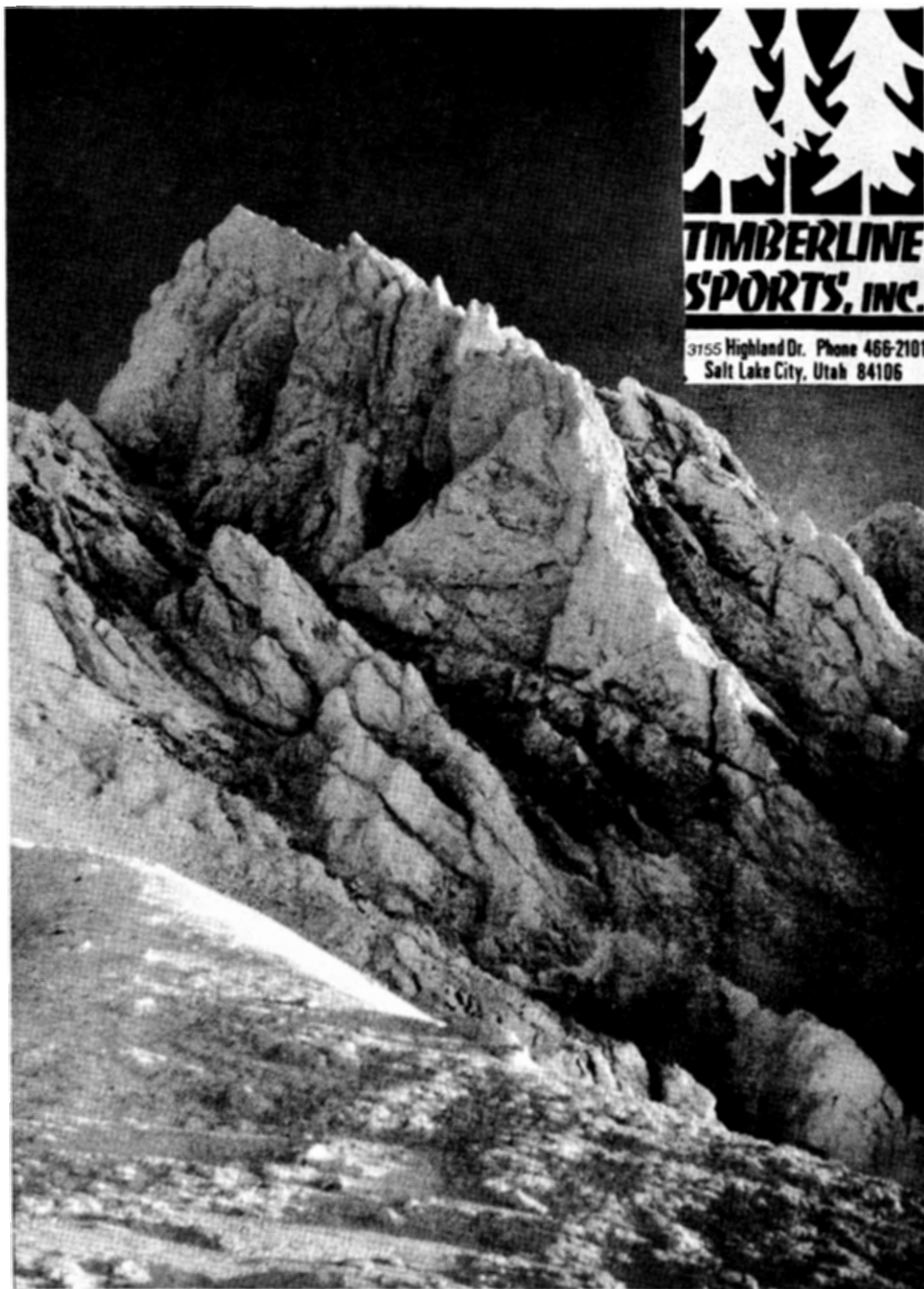
17

*Lodge Wood  
Gathering  
Party*

A huge effort by a relatively few people made our annual wood cutting and stashing party a success. The weather cooperated beautifully by providing a sunny, cloudless day for our trek to the woods.

Chain saws were loaned by Dave Hanscom and John Herbert. A truck was loaned by Dwight Nicholson, and trucks were brought by Ed Cook, Bud Reid and Sam Allan. Others who brought and used muscle-power were: Barbara and Jennifer Cook, Wolf Snyder, Clint Lewis, Milt, Louise and Brian Hollander, Tom Robinson, Lester Pulley, Craig Marken, Kutaro and Katsugo Sugita, Cliff and Wick Miller, Fern and Marsha Reid, Jim Wheeler, Ted York and Fran Flowers.

18



# Mount Superior

Our group was small to begin with, and it kept getting smaller. Two people decided to go up from the Little Cottonwood side, one went ahead and did the hike solo (these were the smart ones) and one called it quits after signing in.

We got an early start and although the pace was not very fast, we were well past Lake Blanche before the sun hit.

We were still rattling around in the boulders on our way up to the ridge when we caught a fleeting glimpse of Bob and Ray who had taken the other route and were on their way back. On top, we ate lunch and enjoyed a long siesta.

We decided to return via Canyon X - someone thought it was Mineral Fork, nobody knew for sure. We took our time and stopped frequently to just sit and enjoy the surroundings. At this point someone observed that it didn't look very much like Mineral Fork.

As we neared the lower more frequented portion of Canyon X, pockets, packs and arms began to fill up with a varied assortment of cans, paper, and other discarded treasures. Clint and Clint Jr. deserve a special award for their clean-up effort.

The mystery of Canyon X was solved when we spotted a sign pointing the way to Cardiff mine.

It had been a long hike and we were glad to get back to the road, but we still had one little problem - the car was five miles down the canyon. So - we started walking. It was hot and we were bushed. Finally, Clint suggested that he go get the car while the rest of us waited. He probably should have made the leader go get the car, but bless him, he's a gentleman. We are grateful, Clint, thanks to you we all got home by 7:00.

Participants: Renu Jalota, Alan Tye, Clint Lewis, Sr., Clint Lewis, Jr., Bob Weatherbee, Ray Miller and Fran Flowers, Leader.

# Lackawaxen Lake

- September 9

By Mary Eysenbach

The group followed the ridge line south from Guardsman Pass over two knolls before dropping to the saddle north of Clayton Peak. From there it was an easy contour to the lake. The return trip was bushwacked down the outlet toward Silver Lake before contouring past several pot holes, Bloods Lake, and back to the cars. Beautiful autumn weather enhanced this easy ramble.

Ramblers: Emily Hall, Charles Hall, Buzz Marden, Doti Marden, Brad Marden, Bill Marden. Charles French, Ted York, Craig Marken, Bill Yates, Mary Eysenbach, Dave Moore, Elmer Boyd, Judy Burton. Four-footed companions: Billie and Fred.

# Touring in '73 and '74

Dave Hanscom

No doubt the snow will be deep enough to ski on when you read this. (Despite a broken leg left over from summer-time biking, I'm thinking positively!) Last winter's snow conditions will be tough to beat but I've ordered another good year. And if all you leaders co-operate as well as last year, my job will be an easy one.

The program this season will be like last year in many respects. I'll try to schedule something for alpine, nordic, and snowshoe tourers every weekend. We'll start off with a day at the lodge on November 10 (See schedule). There will be a touring course and an avalanche course in January, and every month I'll schedule an afternoon tour and a moonlight tour. If you have suggestions on how the program can be improved in any way, I welcome your comments. Also, I need ideas on new tours for the club and new leaders.

There will be one major difference in this year's schedule. Judging from last year's participation, there is a need for more beginner tours, particularly for nordic skiers. With that in mind, we have decided to co-sponsor, with Timberline Sports, weekly x-country clinics on Saturdays and beginning nordic tours on Sundays. The clinics will be in Redman Campground, with carpooling organized at Timberline at 9:00 a.m. Saturdays. The Sunday tours will be conducted by a Timberline instructor, and information will be available at the shop on the day before.

Have lots of good touring, and think snow!

# Western Party

By Judy Ching

The Western Party was indeed a success. Some early arrivals (by early, I mean on time!), got nervous when our illustrious bartender was a few minutes late. But, Rick did such a fantastic job (once he and Susie got set up and in business) of keeping the booze flowing freely that he was soon a hero (did anyone see if he was riding a white horse?) Jan, are you really going to become a professional bartender, or is that another groundless rumor?

I lost track of who was dealing what during the evening -- who was that George character who broke the roulette and crap tables?

If the auction was any indication of the winnings of the people, then we were all pretty wealthy individuals for an evening---\$64,000 for a poster??? Will someone please tell Pat Mulligan that his auction item is not to be worn on the head?

The band wasn't quite what was expected, but then what are expectations for???

We had a goodly amount of people spend the night at the lodge which, to me, was a good ending to a good party. Thank you committee members: Jan Andersen, Judy Davis, Mike and Bonnie O'Mana, Joel Bowen, Mel Davis, Karil and Bob Frohboese, Rick Williams, and Katy Hedberg for the excellent support and help in a job well done. Thank you, to the people who stayed and got the lodge in shape Sunday morning--Mel informs me that it looked good and is ready for the next blow-out. Thank you all WMClubbers for coming and having a good time.

APPLICATION FOR MEMBERSHIP

WASATCH MOUNTAIN CLUB  
3155 Highland Drive  
Salt Lake City, Utah 84106  
Phone: 363-7150

NAME (Print) \_\_\_\_\_ TELEPHONE \_\_\_\_\_

Name of spouse (only if spouse wants membership also) \_\_\_\_\_

Address \_\_\_\_\_ ZIP \_\_\_\_\_

Occupation (Optional) \_\_\_\_\_

I hereby apply for membership in the Wasatch Mountain Club. I have attended two Club activities as required for membership, such as, hikes, ski tours, cave trips, camping trips, rock-hound trips, or work parties; and I am genuinely interested in the outdoors. Social events such as lodge parties, ski socials, etc. are not included in the definition of club activities qualifying for membership. I agree to abide by all the rules and regulations of the Club as specified in the Constitution and By-laws as determined by the Board of Directors.

I enclose \$ \_\_\_\_\_ dues and \$4.00 entrance fee. (Please note - from January through August the dues are \$6.00--spouse \$3.00--plus \$4.00 entrance fee. From September through December, the dues are \$3.00--spouse \$1.50--plus \$4.00 entrance fee.)

I am specifically interested in the items checked below:

Hiking\_\_ Ski Touring\_\_ Boating\_\_ Mountaineering\_\_ Caving\_\_  
Cycling\_\_ Conservation\_\_ Writing and editing\_\_ Organizing social  
activities\_\_ Lodge\_\_ Photography\_\_ Other \_\_\_\_\_

CLUB ACTIVITIES ATTENDED:

1. \_\_\_\_\_ Date \_\_\_\_\_

2. \_\_\_\_\_ Date \_\_\_\_\_

RECOMMENDED BY: \_\_\_\_\_ Member \_\_\_\_\_

NOTE: \_\_\_\_\_ Director \_\_\_\_\_

When applying for membership,  
the activities you attend must  
have been within 12 months  
prior to the date of application  
to the Club.

\_\_\_\_\_  
Signature of Applicant

*WASATCH MOUNTAIN CLUB, INC.*

*3155 Highland Drive/Salt Lake City/Utah 84106*

BULK RATE  
U. S. POSTAGE

**PAID**

SALT LAKE CITY, UTAH  
PERMIT NO. 2001

*Address Correction Requested / Return Postage Guaranteed*

## **BOARD OF DIRECTORS**

<b>LEROY KUEHL</b> , <i>President</i>	<b>582-6890</b>
<i>BETTY HENDRICKS, Secretary</i>	<b>487-1929</b>
<i>RON WEBER, Treasurer</i>	<b>467-3194</b>
<i>BOB EVERSON, Boating</i>	<b>487-0029</b>
<i>SAM ALLEN, Conservation</i>	<b>486-6834</b>
<b>JANE DAURELLE</b> , <i>Entertainment</i>	<b>278 - 5025</b>
<i>BILL ROSQVIST, Hiking</i>	<b>295-0458</b>
<i>MEL DAVIS, Lodge</i>	<b>278-3174</b>
<i>MARILYN BATEMAN, Membership</i>	<b>466-3132</b>
<i>PAUL HORTON, Mountaineering</i>	<b>262-4695</b>
<b>DOTI MARDEN</b> , <i>Publications</i>	<b>278 - 1974</b>
<i>DAVE HANSCOM, Ski-touring</i>	<b>487-6065</b>
<i>J. DEWELL, Transportation</i>	<b>295-2754</b>