

# news and notices

## THANKS TO

- ...George and Georgia Randall for mailing the April RAMBLER.
- ...Betty Hendricks for typing help.
- ...alter ego Adrian Stevens.

If by some miracle the RAMBLER gets to you by Wednesday, April 3, this news item will let you know that you should rush off that very evening to Kingsbury Hall. Commencing at 8:00 p.m. will be a University Travel Club presentation: "Alpine World U.S.A." by renowned photographer-lecturer Eric Pavel. His camera has caught the seasonal changes and nature's flora and fauna, including man, active in the Sierra and Rocky Mountains. The photo on page 17 is from this outstanding film. Tickets are \$1.50 each.

## WASATCH TRAILS

Please send postpaid \_\_\_\_\_ copies of  
WASATCH TRAILS for which I enclose \$ \_\_\_\_\_.  
Price \$1.50 each.

Name \_\_\_\_\_

Address: \_\_\_\_\_

\_\_\_\_\_

City State Zip

to: Wasatch Publishers, Inc.  
4647 Idlewild Road  
Salt Lake City, Utah 84117

REMINDER!! Send your dues in immediately! See page 16 of the March RAMBLER for details. Be sure to indicate any change of address, etc.

Cover photo: Canyonlands  
Inside front cover: Lone Peak  
Both photos by Ryan Leverkus

## Rambler Deadline

...for May is MONDAY,  
APRIL 15. Please have  
your articles and schedules  
typed and mailed to:

ATTENTION: RAMBLER editor  
Wasatch Mountain Club  
3155 Highland Drive  
Salt Lake City, Utah 84106



THE RAMBLER is published monthly by the Wasatch Mountain Club, Inc., 3155 Highland Drive, Salt Lake City, Utah 84106. Subscription rates are \$4.00 a year. All correspondence regarding changes of address, mailing, etc. may be directed to the Membership Director at the address above. The WMC is a non-profit corporation. 2nd class mailing permit applied for. This edition: April 1974, Vol. 51, issue 4. Permit pending and application paid for at Salt Lake City, Utah.

# Club activities for April 1974

REGISTRATION INFORMATION: Registration is generally not required

for members participating in easy or intermediate hiking (Rating below 7.0). Unless specifically stated, advanced hikes (Rating above 7.0) require registration with the leader. Adequate equipment is an absolute must. You cannot participate in these events if you have not shown your ability on other hiking activities and if you do not have adequate and well broken in boots with good Vibram type soles and suitable protective clothing. Special equipment like an ice axe etc. may also be specified and you are required to be able to handle such equipment. Remember that these restrictions are set for your own safety and that of your fellow members. For rules regarding participation of children, consult the May Rambler 1972.

Correction: NO ski clinics or tours will be offered by Timberline Sports in April. Recycling center continues; see Feb. or Mar. RAMBLER for details.

APRIL 6  
Saturday

MILL D TO MILLCREEK SKI TOUR. Intermediate (2,3). Snow conditions will determine the route on this tour (and we may even decide to pass up Millcreek Canyon), but we can promise an outing of modest difficulty to wrap up the skiing season. This is a good one for nordic skis due to the long runout. Meet at the mouth of Big Cottonwood at 8:30 a.m. Leader: George Swanson, 466-3003.

APRIL 7  
Sunday

CATHERINE PASS FROM BRIGHTON SNOWSHOE TOUR. Intermediate (2,2). The last snowshoe outing of the year will be an old favorite. Meet at the mouth of Big Cottonwood at 9:00 a.m. Leader: George and Georgia Randall, 322-2360.

APRIL 10  
Wednesday

ESCALANTE WILDERNESS COMMITTEE will meet at 7:30 p.m. at the Hovinghs, 721 2nd Avenue, Salt Lake City 84103 (359-4791).

APRIL 11-13  
Thurs.-Sat..  
(not Wed. as  
previously  
noted)

ESCALANTE EASTER FAMILY BACKPACK TRIP. We will start at the town of Escalante and follow the river downstream through beautiful canyons, past many Indian cliff dwellings and a natural bridge. After three days and one hundred river crossings, more or less, we come out where Highway 12 crosses the Escalante River. Register by April 7th with Peter Pruess, 467-8284.

- APRIL 11-14  
Thurs.-Sun. ZION NATIONAL PARK FAMILY CAR CAMP. Meet us at the Zions campground Wednesday morning or anytime until Sunday. I'll be driving a big orange Dodge van. Phone 295-0458 for more details. Leader: Bill Rosqvist.
- APRIL 11  
Thursday EVENING CLIMB AT PETE'S ROCK. This will be the first of the weekly climbing sessions. Everyone, whether climber or not, is welcome. Pete's Rock is located about 5400 South on Wasatch Blvd. Meet around 5:30 or 6:00 p.m.
- APRIL 12  
Friday RIVER RATS PRE-SEASON LODGE PARTY. Everyone welcome - experienced river-runners, prospective river-runners, and those just curious about those mad people who enjoy being drenched and pummeled by rivers. April, when the snow starts to melt, is the time to think of recreational recycling of the snow into liquid form. This is an opportunity to familiarize yourself with the crafts (rafts, kayaks and canoes), equipment and people who ride the western rivers. Slides and movies will be shown. Refreshments will be available for a nominal fee. WMC Lodge, Brighton, 8:00 p.m. For further information call Ken McCarty evenings, 466-3297.
- APRIL 13-14  
Sat.-Sun. LODGE OPEN. For further information call Pat Beebe, 278-6912 or Phil Nelson, 485-0237.
- APRIL 13  
Saturday ROYAL ROBBINS, rock climber extraordinary and author of "Basic Rockcraft" (text for Climbing Course), will give a slide show while he is visiting our fair city. Watch the Tribune, U. of Utah Chronicle, etc. for time and place. Or, check with Timberline Sports, 466-2101. Don't miss this presentation - every slide should be an epic unto itself.
- APRIL 13  
Saturday FOOTHILL I. This will be a nice easy one to get the winter kinks out. We will do a little stroll behind the Shriners' Hospital. Meet at the 11th Avenue gate of Shriners' Hospital at 9:00 a.m. Leader: Carl Bauer, 355-6036.
- APRIL 14  
Sunday BIG BEACON - El. 7,100 Rating 3.0 LeRoy Kuehl will lead this big one. If the weather continues its warming trend, we will have an enjoyable trip. Meet at "This is the Place" monument at 9:00 a.m. LeRoy's phone is 582-6890.
- APRIL 18  
Thursday EVENING CLIMB AT PETE'S ROCK
- APRIL 20-21 Correction: Colorado kayak trip moved to April 26-28.
- APRIL 20-28 WMC GRAND CANYON RIVER TRIP. Deadline was March 15 but someone may drop out...? Call Mike Omana, 266-7819 if interested.

APRIL 20  
Saturday  
LITTLE BLACK MOUNTAIN - El. 7,800 Rating 6.5 Now that you've had a week to warm up, you'll enjoy this spring beauty. Meet at the 11th Avenue gate of the Shriners' Hospital at 8:30 a.m. Leader: Marilyn Earle, 466-3132.

APRIL 21  
Sunday  
FOOTHILL II. This will be a continuation of the spring warm-up hikes and will be in the Ensign Peak area. Meet at the mouth of City Creek Canyon lower gate at 9:00 a.m. Leader: Carl Bauer, 355-6036.

APRIL 21  
Sunday  
THIRD ANNUAL B. GALE DICK GOURMET TOUR. Easy. Join the gang for a day of sun and epicurean repast. The tour will be leisurely, the company will be unsurpassed, and the food will be delightful. Bring along your favorite gastronomical treat to share with the group. Meet at the mouth of Big Cottonwood at 10:00 a.m. Leader: Gale Dick, 359-5764.

APRIL 25  
Thursday  
EVENING CLIMB AT PETE'S ROCK. Last day to register for the Beginners Climbing Course.

APRIL 26-28  
Fri.-Sun.  
KAYAK THE COLORADO, Dewey Bridge - Moab beginner trip. Here's a chance to boat the warm waters of the sunny Colorado River this weekend. We'll camp at Rock Garden rapids Friday night and run our trips from there. To reach our campsite take route 163 south and turn left on route 128 just before Moab. Drive 16.5 miles on route 128; campsite is on the left. If the weather is uncooperative we can hike in Arches. Bring a wet suit. Leader: Dan Thomas, 255-1341 (8-4 weekdays).

APRIL 27-28  
Sat.-Sun.  
LODGE OPEN. Same information as April 13-14.

APRIL 27  
Saturday  
BEGINNERS CLIMBING COURSE - first session. See the Rambler article on page 15 for details.

APRIL 27  
Saturday  
WONDERSTONE HILL. We'll go south to the wonderstone area to do some rock hounding. Be sure to bring a rock hammer. Meet at Albertson's, 4800 South Redwood Road, at 8:30 a.m. Leader: Elmer Boyd, 466-7809.

APRIL 27  
Saturday  
FOOTHILL III. This is intended as a warm-up hike but will be a little harder than the past two. It will lead up Pencil Point and over a long ridge. Meet on the east side of the K-Mart parking lot at Parleys Way at 9:00 a.m. Leader: Clint Lewis, 295-8645.

APRIL 28  
Sunday  
GRANDEUR PEAK - El. 8,240 Rating 4.5 This is one of the club's most popular hikes. This is a good opportunity to get those leg muscles back in shape and thaw out the spirits. Meet at The Movie at 9:00 a.m. Leader: Chuck Mays, 582-3818.

APRIL 28  
Sunday  
RIVER RATS BOAT WORK PARTY. This is the first active event of the boating season. All 1974 boaters are expected to attend. In spite of the excellent job that was done putting the boats to bed last fall, work remains to be done. Vandals broke into the boat room and left a mess. We will check out the equipment and take an inventory to see what additional equipment is needed. This is also an opportunity for prospective river rats to learn about boating equipment and procedures. Come and be regaled by stories of boats, rivers, and Odin. Wear your work clothes. Refreshments will be available. Union Pacific Ice Plant, 430 West Second North, at 1:30 p.m. For further information, call Ken McCarty at 466-3297.

MAY 2  
Thursday  
EVENING CLIMB AT PETE'S ROCK

MAY 4-5  
Sat.-Sun.  
SAN JUAN RIVER (Beginner). Boaters will enjoy the scenery from Aneth to Mexican Hat, including some interesting cliff dwellings. Beginning boaters can gain the experience needed for more difficult trips, and experienced river rats can treat the 'cabin fever' that has built up during the winter. Kayaks and canoes are welcome. Register with a \$10.00 deposit to Ken McCarty, 1136 E. 27th South, Apt. 142, Salt Lake City, Utah 84106. Phone 466-3297.

MAY 4  
Saturday  
BEGINNERS CLIMBING COURSE - second session.

MAY 4  
Saturday  
REYNOLDS PEAK - El. 9,400 Rating 4.5 The east approach to the peak is via Mill D north past the Dog Lake area. This activity is especially suited for families. Meet at the mouth of Big Cottonwood Canyon at 9:00 a.m. Leader: Oscar Robison, 278-3923.

MAY 5  
Sunday  
LOOKOUT PEAK - El. 8,954 Rating 6.0 This is one of the best spring hikes in the Wasatch. From the summit views of East Canyon, Park City, and the Salt Lake Valley can be seen. Meet at the Hogle Zoo parking lot at 9:00 a.m. Leader: Richard Wagner, 484-8916.

MAY 9  
Thursday  
EVENING CLIMB AT STORM MOUNTAIN

MAY 11-12  
Sat.-Sun.  
LODGE OPEN

MAY 11  
Saturday  
BEGINNERS CLIMBING COURSE - third session.

MAY 11  
Saturday  
NORTH PEAK OF THUNDER MOUNTAIN - El. 11,150      Rating 10.0  
If there are smiles on us and the weather is good we will ascend Coalpit and do the north peak. With hopes of good snow, the glissade down Bells will be exciting. Bring an ice axe and know how to use it. Meet at the mouth of Little Cottonwood Canyon at 6:00 a.m. (yes, that's six ayem!). Leader: Bill Rosqvist, 295-0458.

MAY 11  
Saturday  
MT. AIRE - El. 8,620      Rating 3.0      This is a very popular spring hike for the club and is also suited for kids. The whole family can enjoy this one. Meet at The Movie at 9:00 a.m. Leaders: Ray and Rosie Miller, 272-1083.

MAY 12  
Sunday  
GRANDEUR PEAK - El. 8,240      Rating 4.5      This is a repeat of the April 28 hike. The spring flora should be progressing well and provide much enjoyment. Meet at The Movie at 9:00 a.m. Leader: Lauren Williams, 466-9734.

MAY 12  
Sunday  
MOUNT OLYMPUS - El. 9,026      Rating 8.0      Come out and work off your frustrations on Blister Hill. The hike to the stream will be very pleasant. Meet at Pete's Rock at 9:00 a.m. Leader: Don Colman, 486-7796.

MAY 16  
Thursday  
EVENING CLIMB AT STORM MOUNTAIN

MAY 18-19  
Sat.-Sun.  
COLORADO RIVER - DEWEY BRIDGE TO MOAB (beginner). This is a pleasant trip offering views of Fisher Towers and the LaSal Range. This is also a good trip for kayaks and canoes. Contact Ken McCarty concerning a trip leader, 466-3297.

MAY 18  
Saturday  
BIG BEACON - El. 7,100      Rating 3.0      Come out for our most popular spring hike. See your old friends and companions. Meet at "This is the Place" monument at 9:00 a.m. Leader: Pete Hovingh, 359-4791.

MAY 19  
Sunday  
TANNERS GULCH SNOW CLIMB. Details in May Rambler.

MAY 23  
Thursday  
EVENING CLIMB AT STORM MOUNTAIN

MAY 25-28  
Sat.-Tues.  
GREEN RIVER - DESOLATION CANYON RIVER TRIP (Intermediate). The Desolation run is one of the best all-around river trips in the region. The trip takes us through some of the most remote areas of Utah and offers exceptional scenery. There are lots of fun rapids in Desolation - i.e. those which give a good ride but are not extremely difficult. We will use a motor for the first day, but for the rest of the trip we will paddle as usual. Register by sending a \$10 deposit to Del Wiens, 4324 Camille Street, Salt Lake City 84117. Phone is 272-3182.



JUNE 1-2  
Sat.-Sun.

BEGINNING TEENAGE RIVER TRIP

JUNE 8-9  
Sat.-Sun.

FAMILY RIVER TRIP. There has been a problem in the past soliciting leaders for these trips. Interested persons should contact Ken McCarty, 466-3297.

JUNE 15-18  
Sat.-Tues.

YAMPA - GREEN Intermediate

JUNE 28-JULY 2  
Fri.-Tues.

MIDDLE FORK OF SALMON Advanced

JULY 3-9  
Wed.-Tues.

MAIN SALMON, CORN CREEK TO RIGGINS Advanced

JULY 10-13  
Wed.-Sat.

LOWER SALMON, RIGGINS TO SNAKE RIVER Advanced

JULY 20-21  
Sat.-Sun.

ADVANCED TEENAGE RIVER TRIP

JULY 27-28  
Sat.-Sun.

WESTWATER CANYON, COLORADO RIVER Advanced

AUGUST 10-12  
Sat.-Mon.

LODORE CANYON, GREEN RIVER Intermediate

AUGUST 31-  
SEPTEMBER 3  
Sat.-Tues.

CATARACT CANYON, COLORADO RIVER Advanced

More river trips may be scheduled. Westwater in October was a particularly good adventure and might happen again this year.

# DUES!

# 1974 River Running

by Ken McCarty, Boating Director

In a mysterious ceremony on a dark stormy night by the banks of the Salmon River, I was made an honorary son of Odin - thereby qualifying for the boating director of the WMC. Recognizing that no one could ever replace Bob Everson, I now take on the duties of that position.

The boating schedule for the year is given in the Rambler activities calendar. The first activity is the River Rats Pre-Season Lodge Party on April 12. All 1974 river runners should attend the pre-season work party to be held on April 28, to assure the proper functioning and safety of all river gear. This gathering also serves to introduce beginners into the whys and wherefores of river running paraphernalia and their maintenance. Two beginner trips have been scheduled in May to give new boaters a chance to gain experience for the more advanced trips. We are continuing the highly successful teenage trips, including an advanced teenage trip. The

main event of the year will be the Salmon River trilogy. Individual boaters may do one, all, or any combination of the three segments. We expect high water this year and, for the safety of all, only experienced boaters of demonstrated ability will be accepted.

Because of the numbers of people involved in WMC river trips it is necessary to establish certain rules and regulations pertaining to river activities:

1. River trips will be classified according to estimated difficulty and participants will be classified according to experience and ability. This is done not only to aid the trip leaders in filling the boats with well rounded crews, but also to provide for the safety of all members and for a learning experience for all.

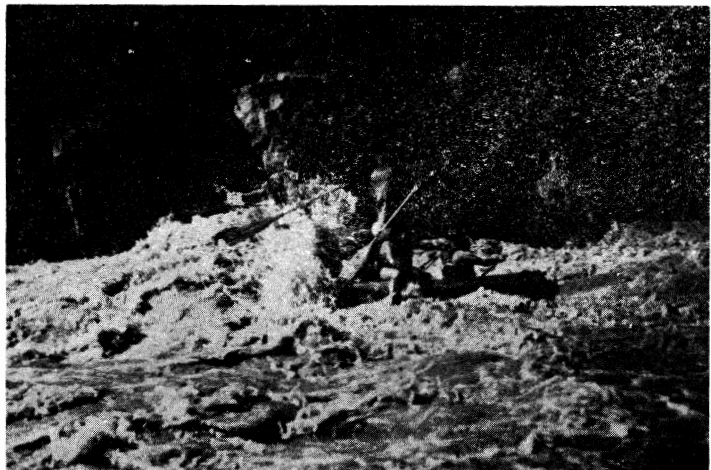
## SKULL RAPIDS

WESTWATER CANYON -  
COLORADO RIVER

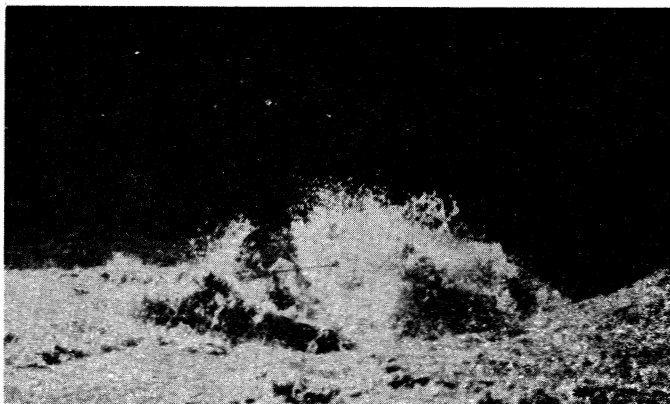
August 23, 1970

Slides by Ernie  
Partridge

**1** Dick Snyder's  
boat. Dick  
(last paddle)  
thinks he's still  
in the boat.



**2** In the teeth  
of the rapids.  
Note upraised  
paddle - a last des-  
perate gesture?



2. A person is insured of a position on a river trip only upon receipt of a ten dollar deposit by the Trip Leader. Make checks payable to the Wasatch Mountain Club. Verbal intent to go on a particular trip is not sufficient for confirmation of a trip reservation. Trip position will be held in the order the deposits are received.

3. The cost of a raft trip will be \$3.00/day/person plus transportation which will depend on the particular trip. Food cost, which is usually based on a communal cooking arrangement, will be separate from the trip costs.

4. Participants are required to take part in the work party pertaining to that river trip. Failure to attend this session will be at the risk of being dropped from the trip or being assessed a \$5 fee.

5. Only the large vest type life jacket will be allowed on trips above the beginner rating. Small jackets with ski-belts will not be allowed. We are obtaining a supply of these jackets for sale, and for rent to WMC members who have not decided if they want to be regular river rats. Life jackets must be worn at all times while on the river. No exceptions!

6. Each person signing on for a river trip is expected to assume his or her equal share of responsibilities: loading gear, inflation of boats, paddling, cooking and clean-up. Remember that the Boat Captain is the sole master of the raft and the Trip Leader of the river trip.

Without detracting from the position of Odin in the hearts of all true river rats, we must recognize that the "oil gods" demand their sacrifices. Transportation will be a problem. We on the Boating Committee and trip leaders will try to provide transportation without undue inconveniences, but we will need your help. Make your reservations (\$10 deposit) early - at least two weeks before the trip starts - so that we can firm up transportation plans early. Deposits will not be returned the last week before the trip. Be prepared to pay the full fee at the work party which will be 2 to 5 days before the trip.

It should be pointed out that the dates listed for the river trips in the schedule are for the time on the water and departure time from Salt Lake City is, in most cases, the evening prior to that date.

Suggestions and comments relating to river running practices, policies, schedules, etc., are encouraged from the WMC membership. For further information contact the Boating Director, anyone with previous river running experience, or attend the boat work session April 28.

Advanced

1. Physical ability
2. Experience - demonstration of ability to handle intermediate and advanced river situations
3. Participation and willingness to work

Boat Captains and Trip Leaders

1. Physical ability
2. Experience - demonstration of ability to maneuver the rafts and coordinate crew efforts
3. Participation and willingness to work
4. Willingness to assume leadership and responsibility

Classification of Participant

Qualification

Beginner

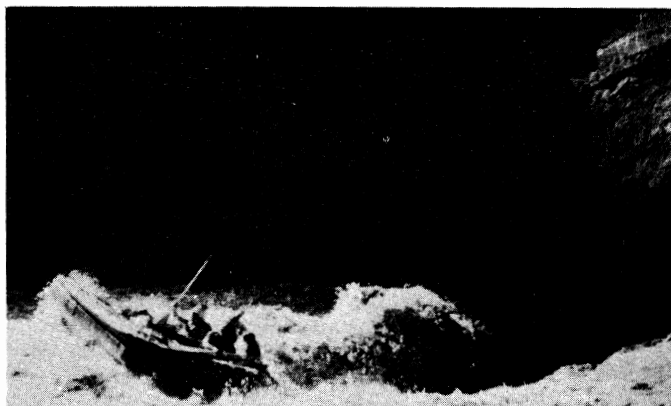
1. Physical ability
2. Club membership or permission of the Trip Leader or Boating Director

Intermediate

1. Physical ability
2. Experience on at least one other river trip
3. Participation and willingness to work

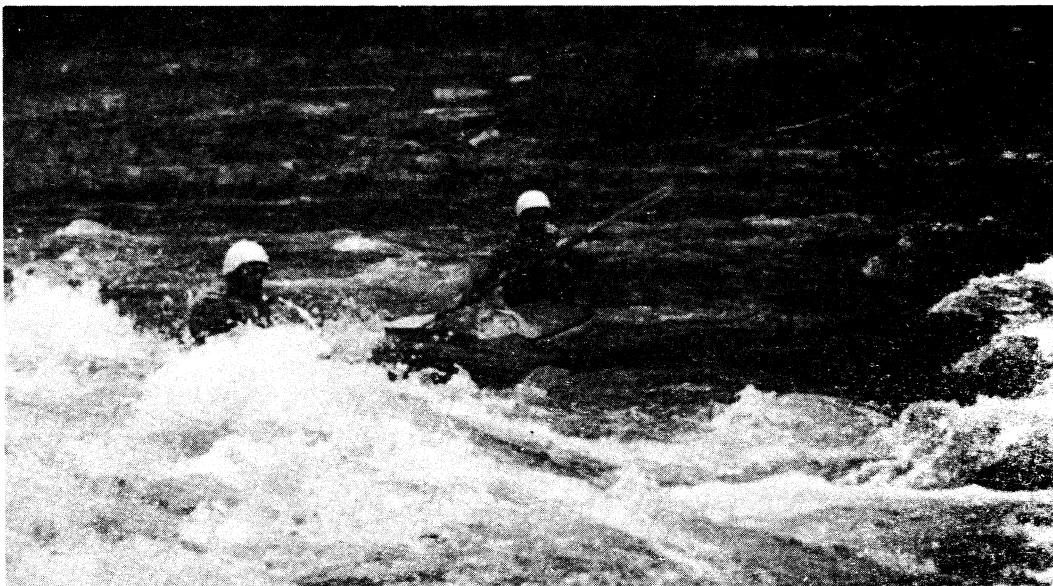
Boating Director

Direct family tie to Odin



**3** Boat emerges without Dick Snyder and Mike Gallagher.

Slides courtesy Bob Everson



WHITEWATER!!

FIND OUT WHAT IT'S ALL ABOUT AT

# ***intermountain whitewater***

KAYAKS, CANOES, RAFTS, AND EXPERT RIVER RUNNING ADVICE

130 EAST 33rd SOUTH  
467-1334

HOURS: MON. & THURS. 1 p.m. to 9 p.m.  
WED. & FRI. 10 a.m. to 3 p.m.  
SAT. noon to 5:00 p.m.

TUES. & SUN. CLOSED FOR BOATING

## WILDERNESS FOR DINOSAUR NATIONAL MONUMENT

by Mike Omana

On March 16, 1974, the National Parks Service held a public hearing on the wilderness proposal for Dinosaur National Monument. Three people attended from Salt Lake City, a terrible showing, but luckily some conservationists from Colorado joined forces with us. Opposition to this proposal has been strong.

A letter-writing information meeting was held on March 21, 1974. If you attended that meeting and haven't written a letter yet, do it now! The deadline for all letters is April 15, 1974. There is still time to write a letter and it is very important. You should be able to write a short letter from the information below.

(1) The Park Service is proposing a 45,100-acre wilderness area. They have excluded 130,300 additional acres that are qualified as wilderness on the weak excuse that they have been used for grazing. They would hold this land out for 60 years (at least) until the grazing permits expire. A lot can happen in 60 years. This land should be protected now. It will not hurt the ranchers to graze their cattle on Wilderness land.

(2) There is a new movement afoot to build new dams. A few demented souls in high places have been pushing for dams at Echo Park and Split Mountain. This would destroy one of the most beautiful primitive areas on earth. Don't let it happen.

(3) At the hearing, the old arguments were used about 'locking up' the wilderness for a few. It would be good to set this straight.

(4) The Citizens Conservation Committee has recommended a wilderness of 197,000 acres. This is a sound proposal and let's support it.

All letters will have an effect on the final proposal. Even if you didn't attend the information meeting, please write. Thank you!

National Park Service Dinosaur National Monument Dinosaur Colorado 81610



LYELL GLACIER, YOSEMITE NATIONAL PARK

slide by Bob Everson

The Wasatch Mountain Club is governed by a Board of Directors - 13 representatives elected by the membership. Through the courtesy of Timberline Sports, our mail is sent to their address, 3155 Highland Drive, for collection only. The Club's telephone is located at O'Dell's Shoe Repair Shop, 425 South 8th West. This phone is maintained as an answering service only by Life Members 'Pete' (O'Dell) Peterson and his wife 'Pinky'. They take time out from their work to answer the phone and relay incoming messages to the proper Director. The Petersons do not hold any office, or attend Board meetings or are they informed by the Board of official actions. If a trip leader cannot be contacted or is not specified, call the Director of that department for information. The Board strongly desires to hear comments, suggestions, inquiries, and criticisms concerning the operation of your Club. Please feel free to phone any Director or write to the President. Names will be withheld upon request, but anonymous letters will be disregarded.

Mountain Club business is conducted only on the first and third Wednesdays of each month. At that time, and only at that time, is the mail opened, new membership applications voted on, dues payments recorded, address changes made, and all other business requiring board action conducted. All board members cannot attend all board meetings and although an effort is made to fill in during a member's absence, some business is held for action until the next meeting.

# Mountaineering Ramblings

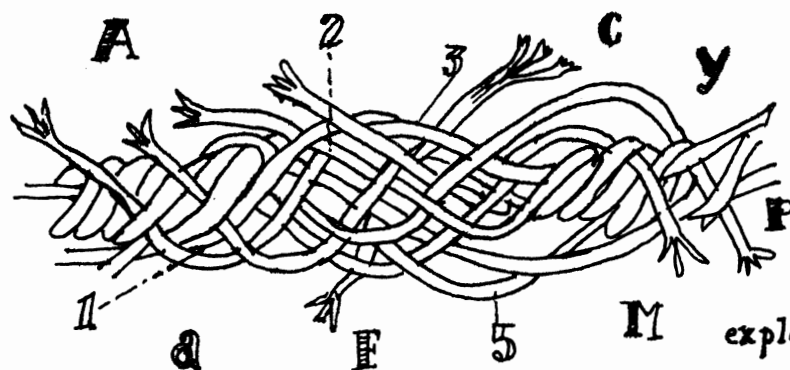
by Paul Horton

The W.M.C. Mountaineering program gets underway this year on April 11th at Pete's Rock. This is the first of the weekly Thursday evening climbs. Four will be held at Pete's, then on May 9th we move to Storm Mountain for the rest of the summer. These sessions consist of bouldering or short climbs, hiking, socializing, or whatever you want. Experienced climbers are there to lend a hand, and ropes are available, but those wishing to climb should have some basic equipment--mainly a decent pair of boots. Things generally get under way at 5:30 or 6:00 p.m., and once we move to Storm Mountain, beer and hamburgers are available for a small fee. Everyone, whether climber or not, is welcome.

Out-of-town mountaineering trips are only tentatively scheduled at the moment. Bill Rosqvist is leading the first, an attempt on the Middle Teton over Memorial Day, and barring gasoline problems, he'll lead a 4th of July trip to Mt. Rainier. Certainly we'll have our annual fiasco in the Cirque of Towers on Labor Day. Other trips to the Tetons and Wind Rivers will be scheduled; I'm open to suggestions and looking for leaders.

In general, but not always, these out-of-town mountaineering trips try to satisfy all tastes by getting everybody into a high camp for a few days and there setting them free to do hard or easy climbing, hiking or fishing or anything. Participants need not necessarily be climbers, but they do need to be in shape and have the proper equipment. See future Ramblers for details.

Local experience climbs will start about the end of May with 2 or 3 snow climbs and continue throughout the summer with nearby epics like Thunderbolt Ridge, North Ridge of the Pfeifferhorn, Mule Hollow Wall, etc. The basic idea of these outings is to provide novice climbers with some Alpine experience on real climbs with experienced leaders. Although the routes are usually technically easy, they do require some basic skills and equipment, so only climbers are welcome. If you want to become a welcomed climber and are now a rank beginner, then take the Beginners Climbing Course.



For joining two ropes. Can be done by following the self-

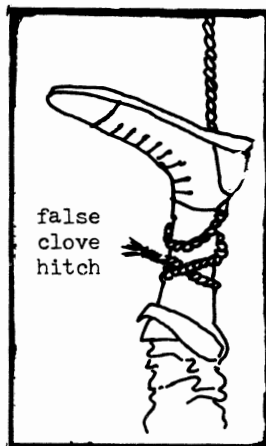
explanatory diagram.

**SIMPLETON'S SPLICE**



# CLIMBING

B  
E  
G  
I  
N  
N  
E  
R  
S



C  
O  
U  
R  
S  
E

The goal of this course is to teach beginners the basics of snow and rock climbing. It will provide the skills and knowledge required to follow experienced leaders up difficult peaks like the Grand Teton. Because climbing and climbing classes can be dangerous, students are expected to take things seriously and to pay attention.

**WHO:** Anybody who is interested in learning to climb. Those under 18 should bring a signed release from their parents to the first session.

**WHEN:** Mandatory registration with Paul Horton (328-9486) by April 25. Saturday, April 27, meet at the mouth of Big Cottonwood Canyon at 9:00 a.m. Saturday, May 4, to be announced, and Saturday, May 11, to be announced. Attendance at all three sessions is required and they generally last most of the day.

**FEE:** \$5.00 Payable at the first session. This provides you with a book and provides the club with new ropes.

**EQUIPMENT REQUIRED:** Boots or rock shoes, hard hat, nylon webbing 1 inch x 20 feet, 3 carabiners and 1 brake bar (or 5 carabiners), 2 nuts. and for the May 4th class an ice axe. Bring any other equipment you may have, like pitons, piton hammer, etc.

Borrow the gear if you can, buy it if you must, but have it. There will be probably be some ice axes available for loan and Timberline Sports might rent them. If you have any problems or questions about selecting equipment, please contact me before the class begins--it's too late once we're in the mountains.

The size of the class will be limited to around 20 persons, so don't wait until the last moment to register.

For further information call Paul Horton.

FINANCIAL REPORT OF THE WASATCH MOUNTAIN CLUB  
Organized May 13, 1920  
with 13 members

**then**

Eighteen trips made during the first year by the Club.  
Two hundred forty-seven participating.

The following trips were made:

Brighton - Lake Blanche	Bird Island
Brighton	Mount Olympus
Big Cottonwood Canyon	Mount Timpanogos (twice)
Bryce - Zion - and Grand Canyon	Hughes
City Creek (twice)	Tolkersons
Parleys - Emigration	Emigration
Millcreek	American Fork Canyon
Dry Canyon	Lake Blanche

No expenses involved by the Club on account of each person paying cash for food and transportation, etc.

At the end of the first year there was -----	\$24.00
in the treasury; during the month of March -----	<u>21.85</u>
was spent for parties and stationery, leaving ---	2.15
in the Bank April 1st, 1921.	

\$2.15 transferred to the credit page.

No other records kept during the first Year.



PINECREST? ca. 1924

Here we go - o - o

# now

## W.M.C. TREASURER'S REPORT ANNUAL REPORT MARCH 1973 to MARCH 1974

SUMMARY	BALANCE 3/1/73	REVENUE	DISBURSE- MENTS	BALANCE 3/6/74
General Fund	\$1,715.06	\$3,783.32	\$4,994.12	\$ 504.26
Lodge	578.65	2,210.00	1,333.67	1,454.98
Boating	3,121.24	9,205.48	9,986.31	2,340.41
Bus	(2,775.62)	3,906.98	1,131.36	--0--
Mountaineering	555.60	79.97	76.85	558.72
Socials	130.87	97.50	158.00	70.37
Conservation	259.09	351.55	118.69	491.95
Sam Thomas Trail Fund	120.35	--0--	--0--	120.35
" " Special Fund	500.00	300.00	125.00	675.00
Ski Touring	265.50	122.50	165.30	222.70
Wasatch Trails	--0--	3,123.50	2,027.41	1,096.09
Total	\$4,470.74	\$23,180.80	\$20,116.71	\$7,534.83
Savings Cert.	4,200.00			3,700.00
Checking Acct.				\$3,834.83

### REVENUE

General Fund	
Dues	\$3,118.45
Advertisements	120.00
Interest	234.30
Miscellaneous	310.57
	<u>\$3,783.32</u>

### DISBURSEMENTS

General Fund	
Rambler	\$3,063.39
Utilities	259.25
Postage	585.85
Miscellaneous	1,085.63
	<u>\$4,994.12</u>



CHALLENGING WHITE WATER RAPIDS IN OREGON

from Eric Pavel's  
"Alpine World USA"

# Mount Majestic

BY STARLIGHT



By Michael Mutek

"Clayton Peak is 10,721, what a view we'll have with a full moon - anyway I've never climbed a mountain at night with skis." Those words changed what would have been an ordinary moonlight tour (if any moonlight tour can be called ordinary) into something we have not really figured out yet. Ours was an international expedition, consisting of Bill Gray (England), Art Janata (Czechoslovakia), Eric Leeper (California), and Michael Mutek (New Jersey). We quickly waxed our skis and set out from the WMC Lodge at Brighton about 6:30, fully expecting to see a full moon. Clayton Peak, better known as Mount Majestic (Clayton doesn't have the advertising appeal of "Majestic" for a ski resort), loomed ahead in the fading sunlight. We encountered every type of snow condition imaginable, from powder to pure ice, as we traversed up. We were still well below our destination as the summit became shrouded in darkness. I remarked that it may just be possible that we are the first to attempt this climb on skis at night. Bill's answer of "Or else they never made it back to tell about," expressed a question we all had. Obviously, unless we wanted to slide over ice and rock, we couldn't go back the same way. We figured we would get to the summit, watch the full moon rise, and pick a bright path either through Snake Creek Pass or maybe around Scott's Pass.

We finally completed the ascent over the last windblown stretch, having to take off our skis at times because of the exposed rocks. From the summit we could see the lights of Midway and

Heber to the east, and Brighton Bowl and the Moonbeam run at Solitude to the west, but still no moon. The wind was brutal at the summit, so we climbed below a rock to rest and give the moon its final chance to appear. Finally we had to begin our descent sans illumination. We took off our skis and slid (a technique all too often forgotten) down toward Snake Creek Pass. Then, skis back on, we carefully followed the ridge leading to the Pass. It was strange to walk at night among the snow and ice formations weirdly shaped by wind and sun. At the pass we found powder and crashed through (and into) trees all the way back to Brighton. We assembled at the base of the Majestic run (try running that at night on cross-country skis) and, at midnight, watched the moon finally appear - it was full.

There was a warm fire and a feast of popcorn and wine at the lodge afterwards. It didn't take long before we were asleep in front of the dying fire. Our thanks to Chuck Mays who organized this trip, but was unable to attend because of an expected addition to his family. Thanks also to Terry Saville, who kept the lodge and fire ready for us and, thoughtfully, was just about to contact the Ranger about us.



HELP!!! I went on the cross-country ski tour on March 3, Bob Everson as leader. Sometime during all the car shuttling I came out with Asnas Tur-Langrenn Ski 200. My skis are, however, Asnas Tur-Langrenn 190. Anyone who has found they have a pair of smaller skis, please contact Marlene Austin at 262-0680.



# Old Time Religion

CLIPPED FROM THE SALT LAKE CITY  
TRIBUNE - FEBRUARY 2, 1974

Editor, Tribune: The Paiutes called it Barohoini, the Navajos called it Nonezoshi, and beneath the great curve making the chancel there stands an ancient altar built for worship by a people long forgotten. Their successors believed it to be the Sun-Path, and passing beneath required prayer.

A later people with white skin called them savages and heathens for worshiping rocks and sun. They worship things like kilowatts, BTU's, and acre-feet; and small stone altars, a sparkling spring, and a massive, graceful curve of orange-red sandstone are idols revered by modern-day heretics holding to an obstructionist religion.

The orthodox believers will desecrate this place as they have destroyed so many other holy places on the Colorado. The stinking, placid pools have reached their sacreligious tentacles into every corner of Glen Canyon, drowning Gregory Arch, polluting Cathedral in the Desert, and killing the life in places called Little Eden and Music Temple. Now Rainbow Bridge will succumb, as have all other places too few will ever know.

The corpse will still be there, for a little while perhaps, to be gawked at by an adoring public in the same class as Stonehenge, but the heart, the life, the creative force that surged here will be stilled.

Perhaps someday a generation as wise as the Anasazi will remove the concrete plug and let nature rebuild some of God's shrines. Meanwhile those of us who keep the old religion will repair to other houses of worship and fight for them as we fought for Rainbow Bridge. Respect in pacem, Barohoini.

Hank Hassell  
Panguitch

## Lake Mary

SNOWSHOE HIKE

By John Horvath Saturday, March 2

We felt strong gusty winds and reasonably mild temperatures at Brighton as we prepared for the trip up to Lake Mary. For the author, it was his first time ever on snowshoes and, after this experience, it definitely won't be his last. We started our ascent in two separate groups; Cliff Fisher, Mark Luttrell, Steve Gregory and I started out with Elmer Boyd leading the way. Charles and David West, Frances West, L. Eugene Robertson, Barbara Robertson, Emil Lawton and Angela Kennedy joined their leader Franklin West.

We trekked at a good pace through the pines and up the moderate grade, weathering strong gusts of wind which became colder as we gained altitude. As we left the wooded slopes and began our final climb along the barren ridge, we felt the full fury of the wind, which was extremely chilling and piercing now that there were no trees to intercept the gusts. Nevertheless, we did make it up to the lake, arriving about 11:30 a.m.

Our group originally had intended to proceed further on past the lake, but the wind changed our collective minds, and we turned back. Our cold and damp bodies soon found shelter from the wind in the form of a huge rock, providing welcome relief for our lunch break. We also managed, albeit none too easily, to start a fire to warm ourselves and dry off our boots before continuing downward. As we were returning, we came upon the second group and continued our way down with them. When we reached the parking lot and journey's end, we were greeted by the beginnings of a substantial snowstorm which climaxed our day's adventure.

# IGLOO!

by Richard Wagner

February 23-24

It was one of those cold winter days when you like to go out for a short, vigorous ski tour, then return to a nice warm home for the night. Thus it was that ten hardy (foolhardy?) types gathered at the mouth of Big Cottonwood with heavy packs, warm sleeping bags and NO TENTS! Finally deciding that ten fools was all the Wasatch Club could muster, we set off for Honeycomb Fork, and after climbing some amazingly steep slopes (it's amazing what's steep with a heavy pack on your back), we arrived at a beautiful snowy bench which we chose for our campsite.

Almost immediately construction began on four igloos, two snow caves, and a tent platform. The latter was recognized immediately and we discovered that one unmentionable had brought a tent along, "just in case." There were nine volunteers of gas-

oline should it become necessary to burn down said structure. The unmentionable quickly began work on a snow cave, and the tent platform was used as a latrine.

Meanwhile, the rest of us began to learn the fine art of building igloos. Dig blocks out of the inside of the igloo. Use blocks as big as you can handle, or slightly bigger. Begin with the first row of blocks leaning in. Don't throw your broken blocks into your neighbor's igloo. The deeper you dig, the better your blocks get. And after finishing the first layer, you're trapped inside, so someone has to serve you your lunch.

The snow cave diggers began to complain that it was too hot to work indoors. One group of igloo builders gave up, and their igloo became a quarry to supply building materials to the other igloos. Layer by layer, the igloos grew until the builders could no longer see out, but miraculously new blocks continued to appear and hang in place as the roof was closed over.

Evan Day, working alone, finished his igloo first, but was trapped inside so he had to be dug out. But soon the other two igloos were finished, and it was judged that Mel Davis had built the best igloo.

Dinner was eaten, either inside the roomy igloos, or outside the cramped snow caves. And after our meal, we all gathered in one igloo for our socializing, telling jokes and drinking hot buttered rum. But, with everyone in one igloo, the air quickly warmed up, and soon the roof was melting. The party was called off as water dripped down our necks, and we left before we destroyed the igloo.

Despite the fact that it was well be-

**no dues - no may**  
 **rambler!!** 

low zero (no one was brave enough to bring a thermometer), we all were comfortably warm in our shelters. But we did learn that a shorty pad is not long enough to keep your feet warm, and that even in winter, the ground can be lumpy.

The next morning, after it was determined that everyone had survived the night, we left the mountains and headed for the Canyon Inn to recuperate. There, several igloo architects were heard to proclaim that next time they'd build snow caves, and several troglodytes said they'd rather build igloos. All agreed that an igloo was too much work for just one night. It was also agreed that an igloo is far roomier and more livable than any tent.

Participants: Evan Day, Bill Yates, Craig Marken, Karen Weatherbee, Ed Snyder, Don Colman, Ruth Holland, Mel Davis, Richard Wagner, and Bill Rosqvist.

DEADLINE FOR DUES -  
APRIL 30, 1974

Do you have a favorite drink or camp-type food recipe? Send it in!

SNOWSHOE SPECIAL  
(as of Broads Fork fame)

- 2 jiggers cream
- 2 jiggers vodka
- 2 jiggers clear Creme de Cacao
- 2 jiggers grenadine (optional for color)
- 2 eggs
- 1 jigger Galliano

Put all in blender; add crushed ice (lots). Blend, sample and fall over. Makes enough for 3 baby bottles.

Russel Curtis, Denver  
via Audrey Stevens

# Jupiter Hill

SNOWSHOE TOUR

By Tom Dickman Sunday, Feb. 24

We gathered at the bottom of Big Cottonwood Canyon when temperatures in the city were in the low teens and expectations for the mountains were far below that.

'Facts' also gathered: 1) The final ridge leading to the top was in the path of a fairly constant strong wind, even when nearby areas might be calm. 2) The last mile would probably have to be walked on foot, as the wind usually scoured the rocks free of snow. 3) Hundred-yard-long windborne banners of snow were rising from the ridges near the city. Thus, all prepared to settle in for a minor arctic adventure.

Once up the canyon however, the outlook changed. The air, while cold, was still. There was not a cloud to be seen and the snow caught the light as it can only do when the temperature is far below freezing.

A short walk through the woods to the north of the Guardsman Pass road brought us to Scotts Pass. Three of the nordic skiers decided to ski to the bottom of the Thaynes lift at Part City Resort, take the lift to the top and then climb up the back side of Jupiter Hill, which is the highest point on the resort Summit House ridge.

The snowshoers stuck to the original plan to follow the near ridge. Three of the skiers stayed with the snowshoers, one because of ideological opposition to using a lift on a ski-tour, and the other two simply because the near ridge looked easier.

The final mile of the ridge was indeed too barren of snow for snowshoes or skis, though better consistency on the wind's part would have been appreciated, as we sank in above our knees several times.

At noon the whole party - unchoosing snowshoers, ideological tourers, lazy tours, and lift-riding hedonists - met again at the summit of Jupiter Hill. Only a light breeze was blowing. We enjoyed a leisurely lunch, with a splendid view of the Wasatch range and Heber Valley, Kermit, though, was disappointed by his jar of Polish sausages, which he swore tasted as though they were bottled in formaldehyde. Some bad jokes were made about preservatives in food and then we packed up.

I have no idea how the tour ended. My compatriots walked back the way they came while I skied down a third ridge of Jupiter Hill, found an untouched bowl of powder, and spent the rest of the afternoon skiing at Park City. So if it turns out that any of them were mauled by bears, cut up by helicopter rotors, fell into unmarked snow caves or were wounded by fights with snowmobilers, such incidents are not reported here only because the trip-writer-upper, trickily designated by Kermit at the beginning of the trip, was not present to observe the possible range of calamities which may have befallen the February 24th band of Jupiterians.

People who managed to make it on at least parts of this trip: Yukio Kachi, Dick Leining, Al Wickham, Larry Spiegel, Fran Flowers, Ruth Henson, Tom Dickman, Marilyn Earle, Kermit Earle, John Blakeley, Alan Taye, Ruth Hoppe, Tom Grover, Shelley Hyde.

# wolverine cirque

By Gail Lewis    Saturday, Feb. 23

The RAMBLER described this ski tour as "ideal for not so confident powder hounds". Well, "that's me", I thought - not so confident! Having just come from Minneapolis, Minn. in January, my idea of powder skiing was being lucky enough to get to the slopes when two inches of new snow had just fallen. My past experience at ski touring had been on very flat little trails winding through some trees in a city park. Obviously, I was unprepared for Utah!

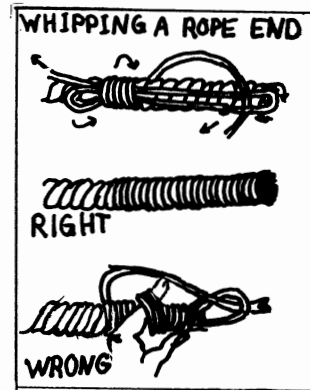
We met at Brighton on what most considered a cold day. (Where I come from, anything above zero is warm.) We started the rigorous climb to the dam. What great exercise! Well, at least it kept the toes from freezing. From there we continued our tour into the cirque below Mount Wolverine. At one point our leader, John Riley, and others in the group felt it necessary to advance with caution and began pulling out their avalanche cords. Hey, wait a minute! Nothing like this ever happened in Minnesota! Lunch was a well-earned respite during which we enjoyed the view, snapped some photos, and munched our goodies in the 5 degree temperature. The sun even poked through occasionally, much to our delight.

The descent was an experience I will never forget. As promised, the conditions were ideal for powder hounds - but what about us "not so confident" ones? It was ski, fall, ski, fall all the way down for me -



my biggest problem being how do you get up after a fall. Pushing down with one's hand did not help to raise the body; it merely pushed the hand deeper into the snow! I complained - even cried - but I'm going again next week!

Others on the tour who gave encouragement (and sometimes a hand at helping brush off the snow) were the leader, John Riley; Frank West, Wick Miller, Earle Wallingford, Yvonne Baskin, Clint Lewis, Ann Goss, Lawrence Vanderplas, Rodney Stock, Charles Swanson, Fred and Eveline Bruenger, and Bill Lewis.



Knot illustrations courtesy  
Wretched Mess News



MORE OF THE WIENS' ROVERING THROUGH AFRICA

# SMITH-MOREHOUSE

## CANYON

### NORDIC TOUR

By Bob Walker    Saturday, Feb. 9

This tour was rated intermediate? It was 16 miles long - as the description said, "A fairly long trek" - which left a lot of folks wondering what an advanced tour would be like.

We skied a total of four miles on snowmobile tracks, but the rest was an exquisite slow climb and descent through forests and glens. The temperature was moderate, wind and clouds non-existent, and the sun beautiful. Twenty-three people showed up and under Don Carlton's watchful eye had a fine time. Had a good beer at the end of the tour too - also thanks to Don.

One of the suggestions from tour members was a list of tours, accurately rated, with snowmobile tracks that must be followed listed.

Participants were: Wick Miller, Bob Walker, Mary Eysenbach, John Hobbie, Lockwood Young, Peter and Margo Hovingh, Steven Gregory, Anne Goss, John Gottman, George Swanson, Bruce Marshall, John Riley, Richard Wagner, Alan Taye, Fred and Eveline Bruenger, Don Colman, Norm Peterson, Steve Seninger, Al Wickham, June Zongker, Don Carlton.

# Bowman Fork

### SNOWSHOE TOUR

By Jim Key    Saturday, Jan. 19

We left from The Movie and proceeded up Millcreek Canyon under ideal snowshoeing conditions - leaden skies and light rain! However, as we put on our snowshoes the rain turned to snow (at the direction of leader Elmer Boyd no doubt) and we proceeded up Bowman Fork.

Frank West, the trip photographer, had a somewhat disappointing day as no one obliged him with a fall into the creek (which we crossed several times).

After lunch, the skies partly cleared and the descent by way of the Terraces Campground offered beautiful views of the Wasatch. Ann Wennhold, one of the skiers in the group, claimed she set some kind of a record for a three-point schuss down Bowman Fork.

Participants were: Elmer Boyd - Leader; DeVerl Humphreys, John and Beverly Mellin, Ann Wennhold, Dennis Webb, Kay Millar, Ruth Henson, Frank West, Audrey Stevens, Jim Key, Dale Green, Ann McDonald, Doug Stark, Barbara Wallace, Danna Petterson, Shirley Pedler, Monica Liebergesell.

A P P L I C A T I O N   F O R   M E M B E R S H I P

WASATCH MOUNTAIN CLUB  
3155 Highland Drive  
Salt Lake City, Utah 84106  
Phone: 363-7150

NAME (Print) \_\_\_\_\_ TELEPHONE \_\_\_\_\_

Name of spouse (only if spouse wants membership also) \_\_\_\_\_

Address \_\_\_\_\_ ZIP \_\_\_\_\_

Occupation (Optional) \_\_\_\_\_

I hereby apply for membership in the Wasatch Mountain Club. I have attended two Club activities as required for membership, such as, hikes, ski tours, cave trips, camping trips, rock-hound trips, or work parties; and I am genuinely interested in the outdoors. Social events such as lodge parties, ski socials, etc. are not included in the definition of club activities qualifying for membership. I agree to abide by all the rules and regulations of the Club as specified in the Constitution and By-laws as determined by the Board of Directors.

I enclose \$ \_\_\_\_\_ dues and \$4.00 entrance fee. (Please note - from January through August the dues are \$6.00--spouse \$3.00--plus \$4.00 entrance fee. From September through December, the dues are \$3.00--spouse \$1.50--plus \$4.00 entrance fee.) Dues include RAMBLER subscription.

I am specifically interested in the items checked below:

Hiking\_\_ Ski Touring\_\_ Boating\_\_ Mountaineering\_\_ Caving\_\_  
Cycling\_\_ Conservation\_\_ Writing and editing\_\_ Organizing social  
activities\_\_ Lodge\_\_ Photography\_\_ Other \_\_\_\_\_

CLUB ACTIVITIES ATTENDED:

1. \_\_\_\_\_ Date \_\_\_\_\_

2. \_\_\_\_\_ Date \_\_\_\_\_

RECOMMENDED BY: \_\_\_\_\_ Member \_\_\_\_\_

NOTE: \_\_\_\_\_ Director \_\_\_\_\_

When applying for membership,  
the activities you attend must  
have been within 12 months  
prior to the date of application  
to the Club.

\_\_\_\_\_  
Signature of Applicant

**WASATCH MOUNTAIN CLUB, INC.**

**3155 Highland Drive/Salt Lake City/Utah 84106**

**Vol. 51, Issue 4 (1974)**

**NON-PROFIT ORG.**

**SECOND CLASS  
POSTAGE PEND-  
ING SLC UTAH**

*Address Correction Requested / Return Postage Guaranteed*

## **BOARD OF DIRECTORS**

<b>DALE GREEN</b>	<b>PRESIDENT</b>	<b>277-6417</b>
<b>BETTY HENDRICKS</b>	<b>SECRETARY</b>	<b>487-1929</b>
<b>MEL DAVIS</b>	<b>TREASURER</b>	<b>278-3174</b>
<b>KEN McCARTY</b>	<b>BOATING</b>	<b>466-3297</b>
<b>VIRGINIA LOUDEN</b>	<b>CONSERVATION</b>	<b>532-1766</b>
<b>KAREN WEATHERBEE</b>	<b>ENTERTAINMENT</b>	<b>582-6799</b>
<b>BILL ROSQVIST</b>	<b>HIKING</b>	<b>295-0458</b>
<b>PHIL NELSON</b>	<b>LODGE</b>	<b>485-0237</b>
<b>MARLENE AUSTIN</b>	<b>MEMBERSHIP</b>	<b>262-0680</b>
<b>PAUL HORTON</b>	<b>MOUNTAINEERING</b>	<b>328-9486</b>
<b>AUDREY STEVENS</b>	<b>PUBLICATIONS</b>	<b>(1) 649-9884</b>
<b>DWIGHT NICHOLSON</b>	<b>SKI TOURING</b>	<b>359-6178</b>
<b>J. DEWELL</b>	<b>KAYAKING</b>	<b>295-2754</b>