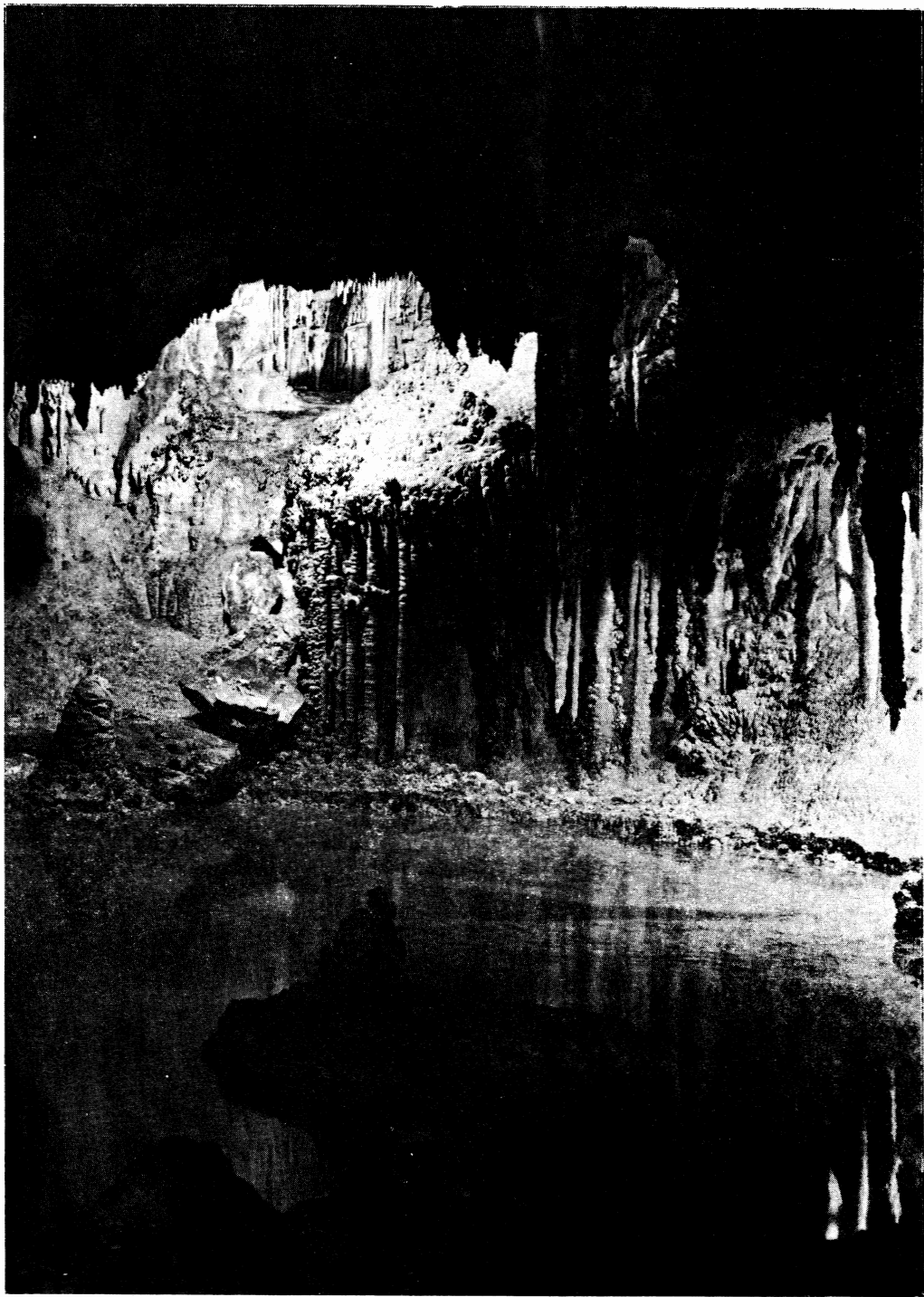


The Rambler

AUGUST 1974 Vol. 51, Issue 8



Official publication of THE WASATCH MOUNTAIN CLUB Salt Lake City, Utah

News and Notices

Want to go on a backpacking trek into the Central Brooks Range in August? For details write:

Bill Quirk
Alaska Wilderness Unlimited
Box 4-2477
Anchorage, Alaska 99509

THANKS TO

...George and Georgia Randall for mailing the August RAMBLER.

...Jackie Thomas and Sue McFee for consulting and typing services.

Cover Photo: Whipple Cave, Nevada. by Dale Green

THE RAMBLER is published monthly by the Wasatch Mountain Club, Inc., 3155 Highland Drive, Salt Lake City, Utah 84106. Subscription rates are \$5.00 a year. All correspondence regarding changes of address, mailing, etc. may be directed to the Membership Director at the address above.

Application to mail at 2nd class postage rate is pending at Salt Lake City, Utah.

Rambler Deadline

...for SEPTEMBER is August 15, Thursday. Please have your articles and schedules typed and mailed to:

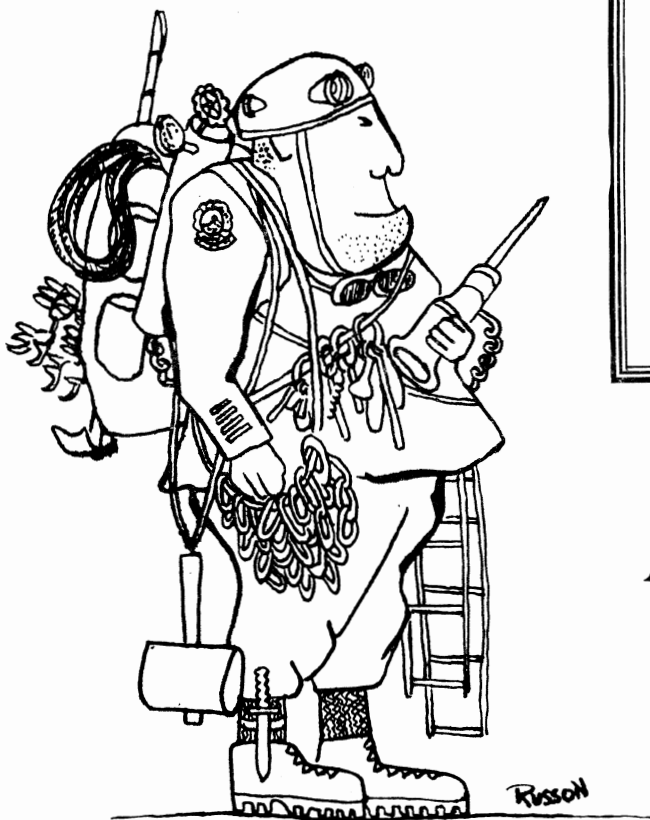
ATTENTION: RAMBLER EDITOR
Wasatch Mountain Club
3155 Highland Drive
Salt Lake City, Utah 84106

The Wasatch Mountain Club is governed by a Board of Directors - 13 representatives elected by the membership. Through the courtesy of Timberline Sports, our mail is sent to their address, 3155 Highland Drive, for collection only. The Club's telephone is located at O'Dell's Shoe Repair Shop, 425 South 8th West. This phone is maintained as an answering service only by Life Members 'Pete' (O'Dell) Peterson and wife 'Pinky'. They take time out from their work to answer the phone and relay incoming messages to the proper Director. The Petersons do not hold any office, or attend Board meetings, or are they informed by the Board of official actions. If a trip leader cannot be contacted or is not specified, call the Director of that department for information. The Board strongly desires to hear comments, suggestions, inquiries, and criticisms concerning the operation of your Club. Please feel free to phone any Director or write to the President. Names will be withheld upon request, but anonymous letters will be disregarded.

Mountain Club business is conducted only on the first and third Wednesdays of each month. At that time, and only at that time, is the mail opened, new membership applications voted on, dues payments recorded, address changes made, and all other business requiring board action conducted. All board members cannot attend all board meetings and although an effort is made to fill in during a member's absence, some business is held for action until the next meeting.

If you didn't receive your July RAMBLER in time, could be your zip code. #s 117 and 121 were misplaced in some monumental shuffle. You may throw rocks at the U.S. Postal Service for this one.

IN MEMORIAM....we note with sadness the passing of member Jack Keuffel, physics professor at the U. and ardent hiking friend with us.



THE COMPLEAT WMC MEMBER



TRAIL GUIDES

Wasatch Trails \$1.50
HIGH Uinta Trails \$2.95
Cache Trails \$1.50

postpaid from:

Wasatch Publishers, Inc.
4647 Idlewild Rd.
Salt Lake City, Ut. 84117

Club Activities for AUGUST 1974



AUGUST 1
Thursday

EVENING CLIMBING AT STORM MOUNTAIN.

AUGUST 1
Thursday

"KNOW THE WASATCH TRAILS" Thursday Evening Hike - Lake Solitude. Meet at 7:00 p.m. at the Brighton Loop. Turn left immediately after entering the one-way road at Brighton. Please do not park in front of the Brighton Store. Be on time - allow $\frac{1}{2}$ hour to drive up the canyon. Leader: Dale Green, 277-6417.

AUGUST 2
Friday

MT. OLYMPUS BY MOONLIGHT - El. 9,026 - rating 8.0. Blister Hill isn't so bad in the cool of the evening. Even if it was worse, the nighttime scenery would make climbing it worthwhile. Bring a flashlight and jacket. The leader says he will do his Ethel Merman impersonation on top (promises, promises - he's been saying that for years). Meet at Pete's Rock at 7:00 p.m. Leader: Don (Ethel) Colman, 486-7796.

AUGUST 3
Saturday

MAYBIRD LAKES - El. approx. 9,600 - Rating 5.0. The Maybird Lakes are in Maybird Gulch, which is just west of Red Pine Fork. We will take the trail to Red Pine Lake, and about halfway up the Canyon we will cut over the ridge to the west. This is a very enjoyable hike for a different pace. Meet at 8:00 a.m. at the mouth of Little Cottonwood Canyon. Leader: Clint Lewis, 295-8645.

AUGUST 3
Saturday

BALD MOUNTAIN - El. 11,947 - rating 3.0. This peak is in the Uintas. Since trailhead is at an elevation of 10,400 ft., the ascent to the peak is relatively short and easy (except for the thin air you are breathing). There is a Forest Service campground nearby, if you want to make it an overnigher. Driving time is about 2 hours one way. Meet at the K-Mart parking lot on Parleys Way at 9:00 a.m. Leader: Elmer Boyd, 583-2292.

AUGUST 3
Saturday

GENERAL MEMBERSHIP MEETING, COOK-OUT, AND OPEN LODGE WEEKEND at the WMC Lodge. Dinner will be at 6:00 p.m. Bring your own meat, bread, drink, cooking and eating equipment, and a potluck dish such as salad or dessert. Kegs of beer and a charcoal fire provided for a small fee. Business meeting will be at 8:00 p.m. Stay if you wish to finish the beer and/or sleep overnight in the Lodge. For more information, call Ruth (Hoppe) Poland, 364-7544, or Ruth Holland, (1) 649-8255.

AUGUST 4
Sunday

PROVO PEAK - El. 11,068 - rating 10.0. This peak south of - and almost as high as - Timpanogos is seldom visited by club members. Come join us for an exciting old revival hike. Meet at the Prudential Federal parking lot northeast of 33rd South and State St, at 7:30 a.m. Leader: John Riley, 485-2567.

AUGUST 4
Sunday

MULE HOLLOW WALL EXPERIENCE CLIMB. This big wall offers interesting and not too difficult climbing on quartzite. Meet at the Storm Mountain reservoir at 9:00 a.m. For registration and information call Don Colman, 486-7796.

- AUGUST 4
Sunday
RED PINE LAKE - El. 9,600 - rating 5.0. This is a fairly easy and very pleasant hike into the bowl below White Baldy, and a view of the always beckoning Pfeifferhorn. Families are welcome. Meet at the mouth of Little Cottonwood Canyon at 8:00 a.m. Leader: LeRoy Kuehl, 582-6890.
- AUGUST 6
Thursday
Lodore River Trip Work Party. 7:00 p.m. Tuesday at Ice Plant (3rd North & 3rd West). Call June Viavant 582-5850.
- AUGUST 8
Thursday
EVENING CLIMBING AT STORM MOUNTAIN.
- AUGUST 8
Thursday
"KNOW THE WASATCH TRAILS" - Bowman Fork. Meet at 7:00 p.m. in the Upper Terraces Picnic Area. Drive 4.6 miles up Millcreek Canyon (3800 South), turn right at the Terraces sign and up the paved road for about 1/4 mile. Leader: Dale Green, 277-6417.
- AUGUST 10-11
Sat.-Sun.
EVANSTON TO KAMAS BIKE HIKE. Anyone interested, call Bill Rosqvist, 295-0458 by Wednesday, August 7th.
- AUGUST 10-12
Sat.-Mon.
LODORE CANYON, GREEN RIVER - Intermediate. From the Gates of Lodore to Echo Park and finally through Split Mountain, this trip features some great rapids and the possibility of a good hike to the ridge line. Hopefully the Women's Lib boat will 'reune' on this trip. For reservations, a deposit of \$10 should be mailed to the trip leader, June Viavant, 252 Douglas St., SLC 84102. Phone 582-5850.
- AUGUST 10-12
Sat.-Mon.
LODORE KAYAK TRIP - advanced. We will join the rafts for a three-day paddle through the Gates of Lodore, Whirlpool Canyon, and Split Mountain. With the possibility of the rafters taking a commercial bus, we will consider using our own transportation and carrying our gear in our kayaks. Roll mandatory. Register by mailing a \$10 deposit to Dan Thomas, 26 Olympus Circle, Midvale, Utah 84047. Phone: 255-1341 weekdays.
- AUGUST 10
Saturday
ALEXANDER BASIN TO BOWMAN FORK - el. 10,000 - rating 7.0 - This is a beautiful, intermediate hike. It has steep beginnings as it climbs to the basin, a glacial, forested bowl below Gobblers Knob. The trail continues through Alexander Basin and around the shoulder of Gobblers Knob to join the Bowman Trail. Leader: John Riley, 485-2567. Meet at 8:00 a.m. at the Movie in Olympus Hills Shopping Center.
- AUGUST 10
Saturday
FLAGSTAFF MOUNTAIN - el. 10,530 - rating 4.0 - Another easy to low intermediate hike - the total gain in elevation is about 2,000 ft. - into the area between Big and Little Cottonwood Canyons. We will start from the Alta Parking Lot (Girard Station). Leader: Elmer Boyd, 583-2292. Meet at 9:00 a.m. at the mouth of Little Cottonwood Canyon.

- AUGUST 11
Sunday
RED PINE - PFEIFFERHORN - el. 11,326 - rating 100 - The rating should indicate that this is an advanced hike. If you feel, however, that for you, Red Pine Lake would suffice (rating 5.0), just come along. You have to register for the Pfeifferhorn with the leader. Leader: Dick Bell, 254-4555. Meet at 7:00 a.m. at the mouth of Little Cottonwood Canyon.
- AUGUST 11
Sunday
MT. WOLVERINE & TUSCARORA - el. 10,700 - rating 6.0 - Two of the higher peaks above Brighton; they have nice lakes on the way up and nice lakes on the way down. Leader: Mike Hendrickson, 467-4117. Meet at 9:00 a.m. at the mouth of Big Cottonwood Canyon.
- AUGUST 15
Thursday
EVENING CLIMBING AT STORM MOUNTAIN
- AUGUST 15
Thursday
"KNOW THE WASATCH TRAILS" Thursday Evening Hike - White Pine, Red Pine Canyons. Meet at the "Y" junction at the mouth of Little Cottonwood Canyon at 7 pm SHARP. Leader: Dale Green, 277-6417.
- AUGUST 17-18
Sat. - Sun.
KINGS PEAK El 13,498 - Rating 24.0. If you really like to hike, are in top physical condition and want to do something special this weekend, join us on the annual trip to Utah's highest peak. We will leave sometime Friday evening. For information call Bill Rosqvist, 295-0458.
- AUGUST 17
Saturday
MT. AIRE El 8620 - Rating 3.0. This is a very popular hike which is enjoyable at any time of the year. Come join the group, bring your family and we'll all have fun! Meet at The Movie at 9:00 am. Leader: Michael Coffeen. Call (days) 582-1632 Ext 26, (eves) 1-649-9797.
- AUGUST 17
Saturday
FIRST ANNUAL PAST AND PRESENT BOARD MEMBERS PARTY....
Everyone who has ever been on the WMC Board of Directors, join in the First Annual Board Party. We will have beer, soft drinks, other refreshments for a nominal charge. Entertainment will be the people present, old stories, and whatever else you may offer. Spouses or dates welcome. The party begins at 8 pm at the WMC Lodge. The lodge will be open overnight for those who wish to stay over.
Since this is a first and involves so many potential people, reservations will be necessary in order to make adequate preparations. Please call Karen Weatherbee (home 272-2624 or office 328-5165) by Wednesday, August 14, at the latest.
- AUGUST 18
Sunday
BROADS FORK - Rating 5.0. This large basin just west of Mill B South Fork offers spectacular views of Dromedary and Twin Peaks. A trip to the ridge between the two peaks can also be arranged. Meet at the mouth of Big Cottonwood Canyon at 8:30 am. Leader: Dave Hanscom. Call 487-6065.

- AUGUST 22 EVENING CLIMBING AT STORM MOUNTAIN
Thursday
- AUGUST 22 "KNOW THE WASATCH TRAILS" Thursday Evening Hike - Elbow Fork to
Thursday the Terraces. Meet in the Upper Terraces Picnic Area parking lot
at 7 pm. Drive 4.6 miles up Mill Creek Canyon from Wasatch Blvd.
and 3800 South. Turn right and drive $\frac{1}{4}$ mile. Leader: Dale Green,
277-6417.
- AUGUST 24-25 LODGE OPEN from 12 noon Saturday through Sunday. Contact Phil
Sat. - Sun. Nelson, 485-0237 for details.
- AUGUST 24-25 BEGINNER & FAMILY COMBINED RIVER TRIP. Will be Dewey Bridge
Sat. - Sun. to Moab on the Colorado, or possibly the Snake, depending on
water conditions. Last chance for simple fun & play on the
river. EXPERIENCED BOAT CAPTAINS NEEDED. Send a deposit of
\$10 to leader, Karen Weatherbee, 4172 Sunset View, SLC 84117.
If you have questions, call Karen at 328-5165 (work) or
272-2624. Work party Tuesday, Aug. 20, 7:00 PM at the Ice Plant.
- AUGUST 24-25 ALPINE CANYON, SNAKE RIVER KAYAK TRIP. We will make several runs
Sat. - Sun. over this stretch. Date has been changed from the 17th. We will
probably camp at East Table Creek. Hope to beat the Labor Day
snowstorms. Come see the idiosyncracies of 7-UP. Call Buzz
Marden, 262-2301 or 278-1974.
- AUGUST 24 NORTH AMERICA WALL EXPERIENCE CLIMB. If Royal gets too busy
Saturday and can't lead us up the Wall, then we'll do one of the local
favorites. Call Paul Horton by Thursday, Aug. 22, for details,
328-9486.
- AUGUST 24 DROMEDARY PEAK El 11,107 - Rating 10.5. A long steep hike that
Saturday is capped with some exposed scrambling on the summit block. The
approach will be by the Lake Blanche trail, but the descent may
possibly be via Broads Fork. Meet at mouth of Big Cottonwood
Canyon at 7 am. Leader Bill Rosqvist, 295-0458.
- AUGUST 24 HONEYCOMB CLIFFS El 10,479 - Rating 3.0. We will go past several
Saturday lakes of the Brighton area and then across the ridge to Honeycomb
Canyon and Silverfork. Meet at WMC Lodge Parking Lot at 10 am.
Leader Pete Hoving, 359-4791.
- AUGUST 25 DEVILS CASTLE El 10,920 - Rating 3.5. This is neither a long nor
Sunday a strenuous hike; however, the peak has lots of exposed scrambling.
Don't worry, you can always chicken out and enjoy the view from
the high pass above Secret Lake. (leader needs a ride, by the way).
Meet at mouth of Little Cottonwood Canyon at 9 am. Leader Carl
Bauer, 355-6036.

- AUGUST 25
Sunday
SNAKE CREEK PASS. This is a foliage trip easy enough for anyone, but especially planned for Gerry-packing parents and wee ones. Bring lunch for the pace will be easy and we'll spend time enjoying the view. All children welcome. Call June Zongker, 262-7092.
- AUGUST 29
Thursday
EVENING CLIMBING AT STORM MOUNTAIN
- AUGUST 29
Thursday
"KNOW THE WASATCH TRAILS" Thursday Evening Hike - Stairs Gulch. Meet at 7 pm in the Storm Mountain Reservoir parking lot. Drive 3.0 miles up Big Cottonwood Canyon from Wasatch Blvd. through the narrow rock gap, cross the bridge, then turn left down the dirt road. Leader Dale Green, 277-6417.
- AUGUST 31-
SEPTEMBER 3
Sat. - Tue.
CATARACT CANYON, COLORADO RIVER - Advanced. The waters of Lake Powell have obliterated most of the rapids in Cataract Canyon. However, the ones that remain are worth the long trip when combined with side canyon hikes. We plan to enter Cataract via the Green River. Tentative hikes include Spanish Bottom and the Dolls House, Gypsum Canyon and Dark Canyon. A reservation deposit of \$10 is due no later than August 21 to Bob Everson, 2613 Imperial St., SLC 84106, 487-0029 or 268-1011. Work party will be at the Ice Plant Tuesday, August 27, 6:30 pm.
- AUGUST 31-
SEPTEMBER 2
Sat. - Mon.
UINTA BACK PACK TRIP. Many possibilities are open for this trip. For information, call Bill Rosqvist, 295-0458.
- AUGUST 31-
SEPTEMBER 2
Sat. - Mon.
CIRQUE OF THE TOWERS MOUNTAINEERING HIGH CAMP. The peaks and pinnacles of the Cirque form one of the finest climbing areas in America. As usual, you need to be in shape and have the proper equipment, and non-climbers are welcome providing they are self-sufficient. The hike in is about 12 miles and goes over one pass. In more than our share of the past few years, we have run into bad winter storms on this trip, so come prepared for the worst. For more details and registration call the leader, Paul Horton by August 28, 328-9486.
- AUGUST 31-
SEPTEMBER 2
Sat. - Mon.
KAYAK THE SNAKE. We'll spend Labor Day weekend camped at Table Creek Campground and depending on interest, kayak through the park, Moose to Hoback Junction, or Alpine Canyon. I'll leave Friday night and try to coordinate shuttles for all those interested in this stretch of river. Meet at campground Saturday morning. If you need more information, call Dan Thomas, 255-1341, weekdays.
- AUGUST 31
Saturday
LONE PEAK. El 11,252 - Rating 11.0. We'll try this time via the Draper Ridge with a possible return via Bells Canyon. It will be a nice long hike for the physically fit. Meet at The Movie at 7 am. Leader Alexis Kelner, 359-5387.

- AUGUST 31 NEFFS CANYON. El 8600.- Rating 6.0. This route is famous for
Saturday more lost people than any other place in the world, but with
our capable leader, have no fear. Meet at The Movie at 8 am.
Leader Carl Erhman, 278-9386.
- SEPTEMBER 1 MINERAL FORK. Meet at mouth of Big Cottonwood Canyon at 8:30
Sunday am. Call Bill Rosqvist for information, 295-0458.
- SEPTEMBER 1 MT OLYMPUS. Meet at Pete's Rock at 8:30 am. Call Bill Rosqvist
Sunday for information, 295-0458.
- SEPTEMBER 1 MT MAJESTIC FULL MOON. Meet at mouth of Big Cottonwood Canyon
Sunday at 6:30 pm. Call Bill Rosqvist for information, 295-0458.
- SEPTEMBER 5 EVENING CLIMBING AT STORM MOUNTAIN
Thursday
- SEPTEMBER 7-8 WHEELER PEAK. Call Bill Rosqvist for information, 295-0458.
Sat. - Sun.
- SEPTEMBER 7-8 LODGE OPEN from Saturday morning through Sunday. Contact
Sat. - Sun. Phil Nelson, 485-0237 for details.
- SEPTEMBER 7 LAKE BLANCHE. Meet at mouth of Big Cottonwood Canyon at 9:00
Saturday am. Call Bill Rosqvist for information, 295-0458.
- SEPTEMBER 8 AMERICAN FORK TWINS. Meet at the mouth of Little Cottonwood
Sunday Canyon at 8 am. Call Bill Rosqvist for information, 295-0458.
- SEPTEMBER 21 WOOD-GATHERING PARTY at the lodge. Lodge open Friday and
Saturday nights.

ADVANCED TEENAGE RIVER TRIP, SALMON RIVER, CANCELLED.

For the third consecutive time a teenage river trip has been cancelled due to lack of participation. A minimum number of people is required for both safety and to insure that the trips will not be too expensive. In addition, it is necessary to obtain a commitment from the participants sufficiently in advance of the river trip date so as to secure the appropriate transportation. This means at least one to two weeks prior to the trip. We feel that a discontinuation of these teenage activities within the boating schedule would be unfortunate judging from the response of the first few trips. It is anticipated that a teenage schedule will be included in the 1975 boating schedule, but if the pattern continues the teenage river trip will become an extinct species. So, it's up to you teenagers and parents of teenagers to demonstrate your interest.

Ibapah Peak by Dale Green

A 1908 USGS one-minute quadrangle, long out of print, lists the highest peak in the Deep Creek Range as "Haystack Peak", elevation 12,101.

About two miles to the north is a "Bald Mountain". Since my first visit to the area about 20 years ago, I became aware that all the locals, especially the Indians, refer to the highest peak as Ibapah Peak. Haystack Peak, they insist, is the peak that

looks like a haystack from the community of Ibapah and labeled "Bald Mountain" on the map. (It also looks like the highest peak from Ibapah.) All subsequent maps have carried these "erroneous" names.

The USGS is now remapping the area. Their first available advance copy tentatively lists the name of the highest peak as "Ibepah" at a revised elevation of 12,087 feet. I don't know which name will be finally used. I have a friend in the BLM who has written the Board of Geographic Names in an attempt to get them to change to Ibapah but they refused because of the long use of the name "Haystack". The peak is the center of a proposed BLM wilderness area. It well deserves the classification and our support.

In contrast with last year's trip where nearly everything went wrong, we didn't have anyone or anything get lost, stuck, punctured, threatened by lightning or wallowing up to their butts in slushy snow. After arising at 5:30, we actually were on the trail by 7:30. Only the first $\frac{1}{4}$ mile or so of the trail leads toward the peak so the group bushwacked the rest of the way through fairly reasonable terrain. A good pace was set for the first 3 hours with a 5 minute rest every hour whether it was needed or not. Nearing the summit ridge, everyone assumed their individual pace and most were on top by 12 noon.

The air was clear and crisp and the view glorious. To the south and west in Nevada, snow-capped peaks accentuated the Snake, Schell Creek and Ruby Ranges. Clouds covered our Wasatch Mountains but we could definitely see the Tushars, 125 miles away, and the Raft River Mountains, 145 miles away.

Our descent route was down the south ridge a short distance, then to the east and down a very scenic gully.

Attendees: June Viavant, Dwight, & Joan Nicholson, Jim Hathaway, Ron Weber, Paul Horton, John Riley, Yukio Kachi and Dale Green, leader.

Lake Solitude

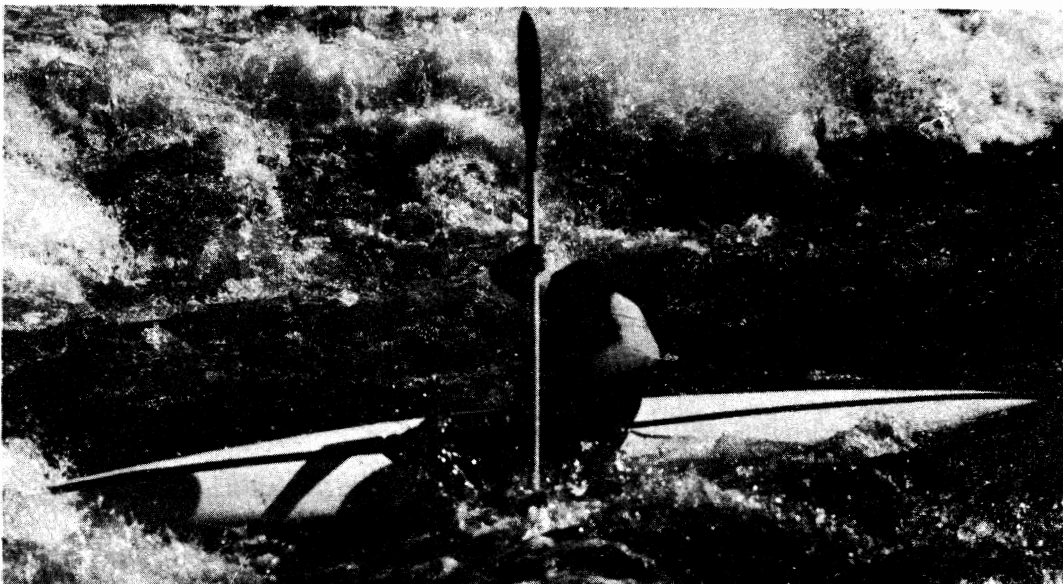
by Dick Honn

After avoiding a run on the "goodies" at the Brighton store, we made our way past the fishermen on Silver Lake and once on the trail we had the mountains to ourselves. The kids were so busy talking and making friends that they forgot they were hiking. In less than an hour we were at Lake Solitude just in time for lunch and some mine exploring. (Leader Liz Choules sets a rugged pace!)

The Choules, Honns and Kings decided to test the accuracy of the Wasatch Trails Guide and their kids' disposition and return via the Twin Lakes Overlook. A little slipping and sliding in snow banks provided a few laughs and some very wet tennis shoes. We passed the Nicholsons on the trail as they had decided to come up the other way. It was great to experience the pride of accomplishment each child felt upon reaching the overlook.

Through great planning on Liz's part we met the rest of the gang where the trails meet near Silver Lake and made our way back to the Brighton store for the "goodies".

Participants: Liz Choules (Jenny, Cindy, & Pam), Susan Fowler (Henry & Hiram), Dick Honn (Steve & Sheryl), Bill King (Diana), Dwight & Joan Nicholson (Johnny Jackson), Ann Wennhold (Kim and friend, Kelly Devine).



WHITEWATER!!

FIND OUT WHAT IT'S ALL ABOUT AT

***intermountain
whitewater***

KAYAKS, CANOES, RAFTS, AND EXPERT RIVER RUNNING ADVICE

130 EAST 33rd SOUTH

467-1334

HOURS: NOON TO 6 PM
MONDAY THROUGH FRIDAY

SAT. & SUN. CLOSED FOR BOATING

Kessler Peak

June 15

Not quite the hottest day of the year, but it sure seemed like it. Fortunately for me, our Kessler Peak hike group waited a few minutes past the 8:30 deadline before starting up the canyon. We left all but three vehicles in the lot at the mouth of Big Cottonwood, drove those up to the Cardiff Fork, and up the gulch toward Cardiff until we reached an unfordable creek (and about a dozen other cars). Then we started on foot up the 4-wheel drive road. We made good time to the jump-off point just below the Cardiff mine, the fresh (but warming) morning air punctuated by smell of campfires and various flora.

After a brief rest, we left the canyon floor and started back north, up the sunny side toward the ridgeline. By now we (the newcomers to this gulch) agreed we had spent at least 3.0 of the club's quota for this hike, so it couldn't be much farther. Another hour passed: how wrong we were. Up! Up! Up! For some reason or another I was assuming an increasingly rearguard position to the other hikers. Finally we came to what the oldtimers (Dale, this means you) called a mule trail. This so-called (expletive deleted) mule trail went straight up the hillside, with us on it. UP, UP, UP, puff, puff, to the mine dump just below the ridgeline. And then! Straight up to the ridgeline itself inhale two steps, exhale four steps, inhale, exhale, pause. Where did everyone go? Oh, there they are, way off there along the skyline. Up, along the ridgeline to a horizontal snow cornice (cool underfoot, but glary, and even the air was getting hot in this sun). Then a final hump, and Kessler was conquered -- I think the rest had only been there about $\frac{1}{2}$ hour when I arrived.

They were basking in the sun, drinking in the view (and some melted snow water, etc. too). It was really worth the effort. What a view: Ruta snowballing, the north side of Big Cottonwood Canyon, way out beyond Guardsman's Pass, across Little Cottonwood to where Twin Peaks used to be majestic (now there's some kind of man-made contraption there), and out across the whole SL valley. What a view!

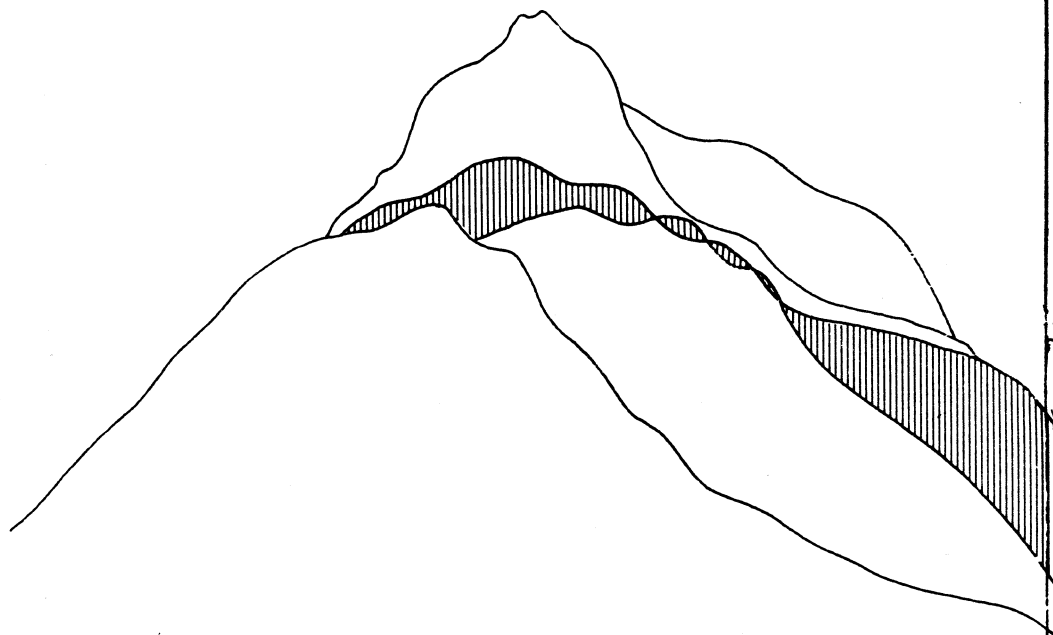
Then it was time to descend. Kermit and Marilyn volunteered to rearguard our descent (thus relieving me of my post on the uphill part). And what a descent it was: worth every bit of the heat, the work of the climb, the bushes. A few rods down from the ridgeline we encountered a delightful snowfield about 150 yards long. It wasn't too steep, and made excellent practice for glissading the steeper snowfields below. We all came down it: some heels up, some heels down, everyone refreshed and delighted. We traversed a little, crossed a small ridge, and found another snowfield. Glisade, glissade, glissade. Finally we were back just above the road, hacking through the bushes -- I was now really glad we had taken the long way up and avoided the more vertical ascent through this patch.

Then, back down the road to the cars and the bottom of the valley. For some reason, Kermit and Marilyn reached the cars within a few seconds of the leaders -- different from my more appropriate rearguard style on the ascent.

A final word of appreciation to Steve for excellent guiding and leading.
(and thanks for the water on top) And a kudo for Gwen: superbess glissading form.

Participants: Ruta Dreijmanis, Bill Van Moorhem, Larry Day, Bill King, Jerry Greenleaf, Rein Gercke, Jack Zasteresek, Dave Drewry, Ron Simmons, Dale Green, Don Fox, Dan Hoggatt, Kermit and Marilyn Earle, Gwen Ryan, leader Steve Swanson.

When the fences and trees
in your backyard just aren't enough, look for more
and find the mountains.



Climbing and Backpacking Clinics Available

Timberline Sports 3155 HIGHLAND DRIVE SALT LAKE CITY, UTAH 466-2101

STORE HOURS M-W-F 10:00 A.M. 9:00 P.M.

T-TH 10:00 A.M. 6:00 P.M. SAT. 9:00 A.M. 6:00 P.M.

capitol reef wilderness?

CONSERVATION CORNER

by Mike Omana

Notice is hereby given in accordance with the provisions of the Act of December 18, 1971 (85 Stat. 739, 740; 16 U.S.C. 273d), and in accordance with departmental procedures as identified in 43 CFR 19.5, that public hearings will be held beginning at 9:00 AM on August 16, 1974, in Room 106 of the State Office Building, State Capital, Salt Lake City, Utah, for the purpose of receiving comments and suggestions as to the appropriateness of a proposal for the establishment of Wilderness, comprising about 181,230 acres within the Capitol Reef National Monument.

If you've ever enjoyed the beauties of the Capitol Reef area, or if you hope to someday, or if you just like the idea of a little wilderness land left on this earth, you now have a chance to do something about it. People are needed to testify at these hearings; they are in Salt Lake, so we need to be there. Please contact Mike Omana (484-4686) if you can take the time to testify. If you are unable to attend the hearings, the hearing record will be open until September 16, 1974. For information on the proposal call Mike Omana, June Viavant or any of the local conservation organizations.

★ ★ ★ *Starlight & Storm* ★ ★ ★

Mountain Boot Repair -- Mountaineering Equipment

In addition to resoling and general boot repair we are able to stretch boots and replace hooks and rings.

We also have a small but growing stock of climbing equipment.

Drop in and visit. We have a very extensive collection of mountain literature and a small reading room.

One inch tubular Nylon Webbing -- 4400 lb. test.
White with black stripe -- excellent for swami
belts, nut slings, runners, etc. 10¢ per foot

Hours:	Mon.-Thurs.	9-6
	Friday	9-9
	Saturday	9-2

3288 South 13th East

466-6714

Mountaineering

Ramblings

by Paul Horton

The week of the 4th of July seemed to be a Teton rendezvous for Salt Lake climbers. The ever-present Bob Irvine and Bill Conrod were doing the usual ranger duties. Don and Mitchell Black plus George Somners and an unknown female did the Exum route on the Grand; a day later the climb was repeated by Ron Weber, Susy Morris, Marty Snyder and myself. Larry and Steve Swanson did the very difficult Blackfin on Moran, while Caine Alder and party were in Avalanche Canyon. Richard Wagner was seen hiking up a trail and Guy Tombs, who guides during the summer, was encountered. And of course the 15 or so people on the club trip were there.

The club group split into two parties once we were in Garnet Canyon. The first night Dave Smith and I hiked up to the Lower Saddle while the main party stayed at the meadows. After a windy night we awoke at 5:30 to find a sky filled with clouds. Finally, at 11:00 things cleared enough to start the climb of the Grand via the Underhill Ridge. After some scrambling and a few pitches we arrived at the crux, an evil-looking chimney topped by an overhang. As usual, I won the game of "You lead. No, you lead" and carefully belayed Smith. He was soon on top, then I followed and it turned out to be one of the best pitches either of us has done. It features the most thankfully grabbed thank-god hold you could ever find. The rest of the climb was anticlimatic--4 or 5 more pitches of rock and a long slog up steep snow to the summit. As the clouds were building again, we quickly departed. Our descent through the electrically charged air was enlivened by a party above throwing their metal ice axes over the cliffs in an effort to not get zapped. They succeeded, and even recovered their axes, and we were all soon back at the Lower Saddle.

That evening we were joined by Audrey Stevens, Jim Key, Sam Allen, Lyman Lewis, Charlie French, and Rick Johnson (from Washington--we met him on the Saddle and invited him to join us). Next morning, after a much less windy night and a quick breakfast, we started up the Owen-Spalding route on the Grand. The group (minus Lyman and Sam, who decided they'd had enough) soon arrived at the Upper Saddle where we roped up. The climb up the famous belly-roll, cooning place, Spalding Chimney, and double chimney went smoothly and almost before we knew it we were scrambling the last few hundred feet to the summit. On top we lazed around enjoying the view until the afternoon storms began to build. Some careful scrambling led us down to the notorious rappel. With the aid of Smith's belay everyone passed this obstacle and reached easy ground at the Upper Saddle. While the others descended, Rick and I took a short side trip to the Enclosure which features one of the most spectacular views found in the Tetons. Soon we followed the others down to the Saddle, where we packed up camp and began the long drop back to the meadows to rejoin the rest of the party.

Thunderbolt Ridge

June 23

by Audrey Stevens

At 8 AM, 7 of the club's finest, with "S"s tattooed on their chests, I'm sure, churned up the beautiful Red Pine Trail. And then there was me... Midmorning break in this cloudless day found them at Maybird Lake. I found them eventually also, as did Mike and Dave O., who had spent the previous night nearby, and Steve and Snead who came up another way. We climbed up and down through snow and slag, crossing Hogum Fork at the base of Pfeifferhorn. Lunch was at the last running water, a rock ridge below Thunderbolt.

Many steep snow traverses and rock scramblings later, we roped up and waited our turns on the ridge itself. The wildest cirque in the Wasatch it truly is -- surprisingly inaccessible for being so near the valley. The view was down in every direction -- way down, I noted, as I fearfully completed 6 roped pitches (rating F4). We scrambled the last 3 pitches, traversed the ridge and dropped down, only to go up again to the south peak of Thunder Mountain. My galloping friends fed me life-savers when I declared I had no more "up" left in me. The effort was worth it! "Titanic Paul" appeared with an iced bottle of wine and we enjoyed the most unique birthday party I ever had.

Some had gone on ahead and some planned to stay in the cirque, so Paul, Dave S., John, Max and I were left to glissade, whoop, fall, and pick our way from the top to the bottom of Bulls Canyon. We emerged at 9:30 PM, a record for this trip considering the many climbers--to wit:

Renny Jackson, leader; Roger Jackson, Hal Gribble, Audrey Stevens, Paul Horton, Max Townsend, Dave Smith, John Gottman, Mike Dervage, Dave Oberstein, Steve Carhart and Snead Cartwright



Lodge Notes

BY PHIL & SALLY NELSON

I. The Greening of the Shutters and the Sealing of the Floor

Many thanks to the forty-plus enthusiasts who applied their energies at the June 22nd work party. Roof leaks were tarred, windows and sills were washed and broken panes replaced, shutters were repaired, painted and numbered, the kitchen scrubbed, the annex cleaned out and tools sorted, the dorms touched up, light switches repaired, yard raked, gravel spread; while the little kids were tended by the bigger kids. And for good measure, the water supply was cleaned and the sewage hauled away.

Special thanks to Barbara Ross for purchasing supplies, to Andy and Diane Schoenberg for bringing the floor scrubber and sealer, and to Oscar and Phyllis Robison for providing lunch. Ordinary thanks to Del Wiens & Wendy, Paula, Alison; Kermit & Marilyn Earle; Mary & Dave Hanscom; Pete & Margo Hovingh & William; Wolf & Elfrieda Snyder; Mel & Clare Davis; Bill & Sarah Yates & Kathy, Greg, Brad; Jim Skillings & Mike, Kathleen; Ron Healey & Rusty; Louise Hollander & Brian; Dave Straup, Karen Weatherbee, Gray Neale, Clint Lewis, Sophia Simons, Dick Snow, Emil Lawton, Jean Dougherty, Rosemary Tepper, Judy Weatherbee, Craig Marken, Ruth Hoppe and a few others whose names we failed to catch. Honorable mention to Bill Viavant for trucking the trash.

II. The Family Fourth

...was enjoyed by a bunch of people, names unrecorded for posterity. Events of the day included a mass assault on Lake Mary, a delicious potluck lunch, and a kids parade with a band (chiefly percussion).

III. And Scheduling

The lodge is well used this summer with about 50% of July and August booked as of mid-July. Open weekends for August are the 1st, 17th and 24th with club functions on the 1st and 17th (see schedule). For September, open weekends for the club are the 7th and the 21st; the latter date is the wood-gathering party.

★ 10 Speeds ★ Accessories ★ Repairs

★ BENOTTO ★ FOLLIS ★ ATALA

★ Running and Jogging Shoes ★ Track Spikes

BIKES AND SPIKES

5156 So. State 268-1011



The Oquirrhs

JOHN MUIR HIKE

June 1

by Mike Treshow

There we were, 7 AM on a bright, clear (?), brisk morning at the foot of the Oquirrhs awaiting our leader to show us the progress of the tree planting above Kennecott. An hour later, we were still waiting. We didn't get the word that the hike had been cancelled. Too much snow! Not easily daunted, we strolled ever onward. The west slope was so fascinating we found ourselves at the summit before we knew it -- six trailless hours later. To top it off, a six foot rattlesnake welcomed us at the edge of a finger of snow rimming the summit. The view from the top was truly unique: Stansbury Park to the west, Trailings Pond below, SLC shrouded in smog to the east; and those tiny white dots of sails on the blue Great Salt Lake. The most incredible and surprising sight of all though was the wildflowers everywhere! Fifty-five, count 'em, 55 different species in bloom. Even such goodies as the Leopard lily, Sego lilygalore, and the biggest pine violets ever. Too bad there weren't more hikers to enjoy them.

Participants: Martha MacKnight
George Sevarson
Mike Treshow

★★★★★★★★★★★★

Is your ice ax getting old and shoddy? Did it weigh you down the last time you dragged it up a mountain? Well, cheer up! Here is your chance to get rid of it! We would like to buy two used ice axes. Please call 466-3132 after 5:00 PM and get rid of your ice ax today!

The Hike That Wasn't

RED PINE-PFEIFFERHORN-BELLS
BEATOUT HIKE

June 16

by Larry Swanson

Go the "Beat Out" hike without 'ol Silver Fox? NEVER!!! Thus no one except for a handful of sneaks and malcontents showed up for THE social event of the season. The outlandish hour of 6:00 AM was too early for your slug-a-bed scribe (don't forget -- early to bed, late to rise, helps dirty 'ol men acclimatize!)

Happily the group lounged around the Pfeifferhorn eating Lyman's petrified Logan Bread long enough for me to catch up. Peter Cartwright and two friends were met sprinting in the opposite direction, having started in Corner Canyon. Some nice glissading off Thunder Mountain culminated in a Southern style picnic complete with dessert by the Watermelon Man. The first time ever, totally on the trail descent, must go down in WMC annals as a "Beat Out" first. It was a combined "Think Tank" effort with our leader shouting "forward!" with confidently raised ice axe at the appropriate times. The day waxed a little long but well within the allotted time frame (any time before Monday). Those hiking in sympathy of Silver Fox were:

Karen (Leader Lady) Bogart
Sam (Hot Waxed Glissade Pants) Allen
Lyman (Fresh Bread) Lewis
Cindy (Iron Feet) Shumway
Ann (Incognito) Bollinger

Mt Aire

by Ray Miller

The "group" met at The Movie on what was an ideal spring day for hiking, at 9:20; 20 enthusiastic hikers motored up Mill Creek Canyon for an ascent on Mt. Aire. Upon regrouping at the trail head, we found that several hikers decided to omit the meeting place at The Movie and go directly to the mountain. Several hikers had already taken off.

As usual, a couple of the more enthusiastic hikers led the pack to the top, followed by, or perhaps it would be better to say--strung out--the huffers and the puffers. Everyone (I think) made it to the top--for when a body count was taken, there were 26 bodies.

Elmer Boyd had a field day as he stopped and found a number of spring flowers, including a Steers Head (?). On the return trip, 2 of the younger set took time out to do a little snow swishing, sometimes standing, sometimes sitting and sometimes just all over the place.

Participants: James Kordig, Jean Garside, Victor Vaness, Susan Shaw, David Moore, Frances Moore, Elmer Boyd, Ruth Holland, James, David & Audrey Wood, Reg Schwartz, Ed, Jeff & Mike Cook, Marie Kolff, Arthur Crosser, Jan & Pat Nozls, Rose & Ray Miller.

when you buy or sell



FIRST QUALITY SERVICE

residential and

income

properties



SAM ALLAN'S NEW

BLUE RIBBON REALTY

PHONE 486-6834

Timpanogos

June 15

by Jim Key

Mt. Timpanogos, referred to as Utah's mountain, indeed has a great deal to offer hikers of all ages and abilities. It seems, however, to hold the greatest rewards for the mountaineer.

The hike, capably led by Frank West, began at 8:00 AM in beautiful clear weather and followed the Timpooneke trail. This trail is quite gentle and in good condition. It meanders through a forest of pine and aspen with many varieties of wildflowers just beginning to show their colors. This tranquil scene is punctuated by several waterfalls, Scout Falls being the largest, about halfway up Giant Staircase.

After kick-stepping our way up several moderate snow slopes we arrived in Timpanogos Basin with a beautiful view of Pika Cirque to our right (northwest) and the summit ahead (south). Later in the season when the snow clears out, this area would make a good high camp (10,200 ft). We lost our companion ranger here as he had to hike the other side of the mountain the next day. Thanks to the Forest Service for allowing him to accompany us, since his knowledge of the area added to everyone's enjoyment of the hike.

We climbed out of Timpanogos Basin and traversed a moderate snow slope to a notch in the summit ridge about 700 ft below the summit. A word of advice here: even though the snow conditions were quite good for kick-stepping, no one should attempt this hike without an ice ax until all of the snow on the trail clears out. Fortunately, the only two people without axes were either surefooted, lucky, or had long fingernails.

From the notch, we had an easy hike to the summit on a dry talus-covered trail. Most of the group arrived on top by 1:00 PM. One really feels like he is on top of the Wasatch up here. To the west we looked down on Provo and Utah Lake. A small single-engine plane was flying around several thousand feet below. To the south we could see Provo Peak and others nearby. The view to the northeast, however, was undoubtedly the most splen-



did. Across the Heber Valley, the mountains bordering the south side of Little Cottonwood Canyon from Lone Peak on the west to Sugarloaf and Devil's Castle on the east could be seen. This view has a certain likeness to Tyrolean landscapes in the Lechtal Alps near St. Anton. Further to the east the western end of the High Uintas loomed in the distance.

Pictures by Audrey Stevens

After an hour's lunch break we started down, encouraged by several threatening thunderheads. John Mason, who had packed his downhill ski equipment all the way to the top, made a fun-looking, although short-lived, run down the "glacier" while the rest of the group had a blast glissading down. Emerald Lake at the bottom had thawed enough to take on its characteristic color. From the bottom of the "glacier" one has perhaps the most magnificent view of the Wasatch to the north.

After glissading several more slopes, everyone was soaked, but no one seemed to care as they were having so much fun. We picked up the Timpooneke trail again and hiked down by the same route up. On the lower part of the mountain I saw people spanning four generations, all enjoying the mountain in their own way.

This was a most successful and enjoyable hike. The fact that everyone made the summit is somewhat incidental to the fact that everyone had fun and was enriched by another mountain experience. Frank West is to be commended for his organization and leadership, since I'm sure everyone will want to repeat this hike.

Participants: Frank West, Elmer Boyd, John Mason, Adrian Stevens, Audrey Stevens, Bob Galbraith, David Straup, Geoff Ballantyne, Judy Ballantyne, Sam Key, John Riley, Lew Hitchner, Richard Conn, DeVerl Humphreys, Oscar Robison, George Wiens, Mary Jo Sweeney, and Larry Vanderplas.



A P P L I C A T I O N F O R M E M B E R S H I P

WASATCH MOUNTAIN CLUB
3155 Highland Drive
Salt Lake City, Utah 84106

NAME (Print) _____ Telephone _____

Name of spouse (only if spouse wants membership also) _____

Address _____ ZIP _____

Occupation (Optional) _____

I hereby apply for membership in the Wasatch Mountain Club and enclose \$ _____ as my annual membership dues for the year _____, \$ _____ of which is for a subscription to the Rambler for the year and \$4.00 entrance fee. (From January to August, dues are \$6.00 of which \$5.00 are for a Rambler subscription - Spouse dues (non-subscribing) are \$3.00 - plus \$4.00 entrance fee. From September to December, the dues are \$3.00, of which \$2.50 are for a Rambler subscription -- Spouse dues (non-subscribing) are \$1.50 - plus \$4.00 entrance fee.) I (do) (do not) desire to receive the Rambler.

I have attended two Club activities in the past 12 months as required for membership such as hikes, ski tours, camping trips, rock-hound trips or work parties and have been recommended by two trip leaders who are Club members. Social events such as lodge parties, winter socials, etc. are not activities qualifying for membership. I agree to abide by all the rules and regulations of the Club as specified in the Constitution and Bylaws as determined by the Board of Directors.

I am specifically interested in the items checked below:

Hiking _____ Ski Touring _____ Boating _____ Mountaineering _____ Caving _____

Cycling _____ Conservation _____ Writing and Editing _____ Organizing social activities _____ Lodge Work _____ Photography _____ Other _____

CLUB ACTIVITIES ATTENDED:

1. _____ Date _____ Signature of recommending Trip Leader _____

2. _____ Date _____ Trip Leader _____

(Note: The signature of a Director may be substituted for one Trip Leader.)

Signature of Applicant

Catherine Pass

June 29

by Susan J. Shaw

The weather was perfect as we started out from the lodge on the wrong way to Catherine Pass. Above Lake Mary about 10% of the trail was snow-covered which provided the opportunity for some late June glissading on the way down. We reached Catherine Pass at 11:00 AM and after lunch two hikers (Eloy and Michelle) went to Sunset Peak. The rest of us started our leisurely way down about noon.

Participants: Courtney Clayton, Florence Schell, Lois & Doug Craig, Michelle and Eloy Ordacowski, Jim, Kim & Carl Kordig, Yukio Kachi (lead (leader)), Susan Shaw, Beth Randall, Ralph & Paul DeRose.

Mt Superior

by Mark Smith

After spotting only one car for 16 people at the Lake Blanche trail-head, we arrived at Alta a little before 9:00 AM. The group then followed an old mining road up to Cardiff Pass, giving us an excellent view of Mill D North Fork and the entire length of Little Cottonwood Canyon. After pausing for a rest, we followed the ridge line going over numerous false summits, and finally reached the top of Mt. Superior-- at least some of us did; the others stayed at a smaller peak thinking that was it. We then glissaded off the ridge into Mill B South Fork and followed a mountain stream to Lake Blanche and then the trail to the "S" curve in Big Cottonwood Canyon.

Participants: Ivan Cendese, Gary Long, Rick Spedden, Charles & John French, Bob Barnford, Judy Pace, Sid, Steven & Mark Smith, Charley & Tricia Swift, Cathy Kreufer, John Riley, & leader Clint Lewis.

WMC TREASURER'S REPORT \$\$

Transactions Through June 19, 1974

Summary	Balance June 5	Revenue	Disburse- ments	Balance July 17
General Fund	\$1,683.75	\$ 457.50	\$1,066.83	\$1,074.42
Lodge	2,044.79	100.00	224.62	1,920.17
Boating	2,249.54	683.64	1,421.55	1,511.63
Mountaineering	499.40	20.00	1.46	517.94
Socials	64.37	-----	-----	64.37
Conservation	491.95	-----	-----	491.95
Sam Thomas Trail Fund	120.95	-----	-----	120.95
Sam Thomas Special Fund	625.00	-----	-----	625.00
Ski Touring	222.70	-----	-----	222.70
Wasatch Trails	385.38	18.00	-----	403.38
Hiking	50.00	-----	11.81	38.19
Kayaking	10.00	9.00	-----	19.00
Total	\$8,447.83	\$1,288.14	\$2,726.27	\$7,009.70
Savings Certs.	3,700.00	-----	-----	3,700.00
Checking Acct.	4,747.83	-----	-----	3,309.70

WASATCH MOUNTAIN CLUB, INC.

3155 Highland Drive/Salt Lake City/Utah 84106

Vol. 51, Issue 8 (1974)

Application to mail
at 2nd class postage
rate is pending at
Salt Lake City, Utah.

BOARD OF DIRECTORS

DALE GREEN	PRESIDENT	277-6417
BETTY HENDRICKS	SECRETARY	487-1929
MEL DAVIS	TREASURER	278-3174
KEN McCARTY	BOATING	466-3297
MIKE OMANA	CONSERVATION	484-4686
KAREN WEATHERBEE	ENTERTAINMENT	272-2624
BILL ROSQVIST	HIKING	295-0458
J DEWELL	KAYAKING	295-2754
PHIL NELSON	LODGE	581-9205
MARLENE AUSTIN	MEMBERSHIP	583-2098
PAUL HORTON	MOUNTAINEERING	328-9486
MARY WELCH	PUBLICATIONS	262-7732
DWIGHT NICHOLSON	SKI TOURING	359-6178