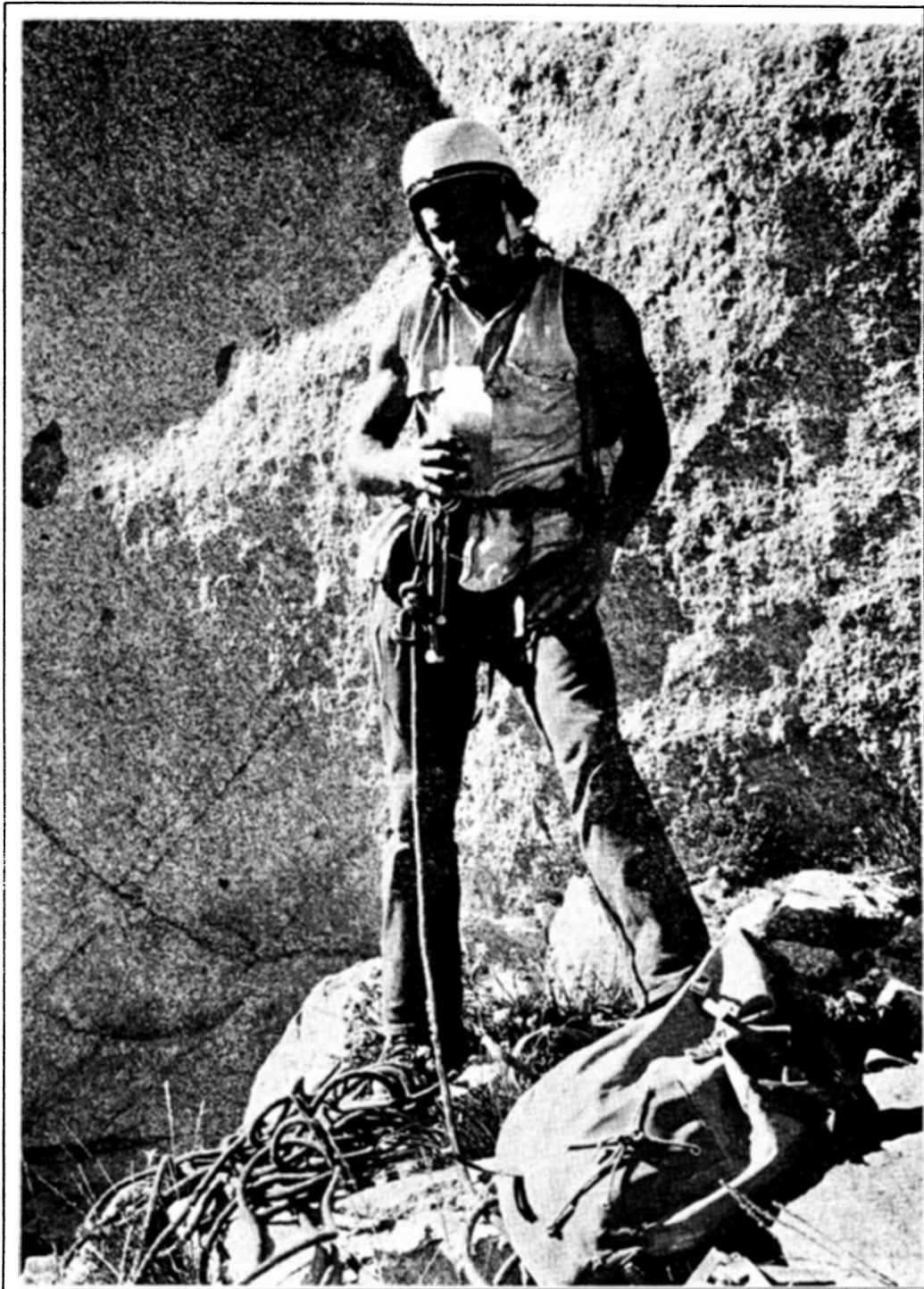


The Rambler

DECEMBER 1974 Vol. 51, Issue 12



Official publication of THE WASATCH MOUNTAIN CLUB Salt Lake City, Utah

news & notices

COVER PHOTO: Reflections...

A tribute to the titanic Paul Horton who stuck it out bravely as Mountaineering Director for two years. Photo by Larry Swanson

thanks

...to George and Georgia Randall
for mailing the December RAMBLER

SELLING CAMPING EQUIPMENT?

We would like to BUY tents, sleeping bags and backpacking stove and pots. Noel de Nevers, 328-9376.

THE RAMBLER is published monthly by the Wasatch Mountain Club, Inc., 3155 Highland Drive, Salt Lake City, Utah 84106. Subscription rates are \$5.00 a year. All correspondence regarding changes of address, mailing, etc. may be directed to the Membership Director at the address above.

Application to mail at 2nd class postage rate is pending at Salt Lake City, Utah.

Rambler Deadline

...for JANUARY is December 16, Monday.
Please have your articles and schedules typed and mailed to:

ATTENTION: RAMBLER EDITOR
Wasatch Mountain Club
3155 Highland Drive
Salt Lake City, Utah 84106

The Wasatch Mountain Club is governed by a Board of Directors - 13 representatives elected by the membership. Through the courtesy of Timberline Sports, our mail is sent to their address, 3155 Highland Drive, for collection only. The Club's telephone is located at O'Dell's Shoe Repair Shop, 425 South 8th West. This phone is maintained as an answering service only by Life Members 'Pete' (O'Dell) Peterson and wife 'Pinky'. They take time out from their work to answer the phone and relay incoming messages to the proper Director. The Petersons do not hold any office, or attend Board meetings, or are they informed by the Board of official actions. If a trip leader cannot be contacted or is not specified, call the Director of that department for information. The Board strongly desires to hear comments, suggestions, inquiries, and criticisms concerning the operation of your Club. Please feel free to phone any Director or write to the President. Names will be withheld upon request, but anonymous letters will be disregarded.

Mountain Club business is conducted only on the first and third Wednesdays of each month. At that time, and only at that time, is the mail opened, new membership applications voted on, dues payments recorded, address changes made, and all other business requiring board action conducted. All board members cannot attend all board meetings and although an effort is made to fill in during a member's absence, some business is held for action until the next meeting.

CLUB ACTIVITIES

FOR DECEMBER 74



REGISTRATION WITH TRIP LEADERS is important for ski tours since weather and snow conditions can cause cancellation or change in destination. It also aids in organizing car shuttles early enough to avoid delays. Register with the leader by some reasonable hour on the day before the tour.

RATINGS OF SKI TOURS (X,Y) describe the difficulty of the climb (X) and the skiing proficiency required to get down (Y). Both are rated from 1 to 6, in order of increasing difficulty. A detailed description of some popular tours is in the November 1974 RAMBLER. Contact the leader if you are in doubt about your ability to do the tour.

Avalanche information is available from Milt Hollander, 277-1416, and from the Wasatch National Forest winter sports information recording, 487-2093. The snow rangers at Alta get so many calls that you should use them only as a last resort, and please don't call them late in the evening. Avalanche probes and cords are required on advanced ski tours. Probes are available to rent through Ski Touring Director Dwight Nicholson and for sale from Dave Hanscom, 487-6065.

- | | |
|---|---|
| <p>DECEMBER 13-15
Friday -
Sunday</p> | <p>OPEN LODGE. Have the smoggy days in the city got you down? Well, here is your chance to get away for a weekend! Bring the kids and spend the weekend at the lodge with the Earles. There should be lots of snow for sleigh riding and a big, warm fire is guaranteed. Bring your own food and equipment. We will arrive at the lodge about 7 pm on December 13. If you need additional information, call us at 466-3132.</p> |
| <p>DECEMBER 14
Saturday</p> | <p>TIMBERLINE NORDIC SKIING CLINIC. FREE. Call Timberline Sports for details, 466-2101.</p> |
| <p>DECEMBER 14
Saturday</p> | <p>RED PINE LAKE - NORDIC TOUR. Please call leader for details and to register: Richard Wagner, 484-8916.</p> |
| <p>DECEMBER 22
Sunday</p> | <p>MANTUA INTERMEDIATE CROSS-COUNTRY TOUR. Ogden Sierra Club organizes this tour. Meet at Mt Ogden Park, 8 am. Leader, Dick Conn, 621-8292 (home), 777-7215 (work).</p> |

DECEMBER 22 CATHERINE PASS-INTERMEDIATE SNOWSHOE TOUR. Suitable for intermediate nordic skiers. Meet at 9:30 am at mouth of Big Cottonwood Canyon. Leader: George Randall, 322-2360.
Sunday

DECEMBER 27-31 LODGE OPEN for skiers and leisure-fiends. Hosts are Janet Gillette, 484-5804 and Ron Healey, 484-5607. Expect a crowd Friday - Sunday and Monday nights, so BYOAM (air mattress). Lodge Tuesday open Tuesday night, but not Wednesday.

JANUARY 2 LODGE available for any club members. Call Phil Nelson, 581-9205.
Thursday

JANUARY 4 TIMBERLINE NORDIC SKIING CLINIC. FREE. Call Timberline Sports Saturday for details, 466-2101.

JANUARY 4 NORDIC SKI TOURING COURSE. This will be a one day course that Saturday will go beyond the Timberline clinic and focus on turning nordic skis. We are asking for a \$2.50 contribution to the Ski Touring Fund for the course. Meet at the Lodge at 9:00 am. Bring a lunch. Call Dwight Nicholson for details, 359-6178.

JANUARY 4 DOG LAKE VIA MILL D NORTH-BEGINNER SNOWSHOE TOUR. Meet at Saturday the mouth of Big Cottonwood at 9 am. Leader Karen Weatherbee, 272-2624.

JANUARY 4 CITIZENS' CROSS-COUNTRY RACE. Organized by Ogden Sierra Club. Saturday Snow Basin. Start 1:30 pm. Entry fee \$2.00. All classes; Jock Glidden, coordinator.

JANUARY 5 BEN LOMAND PEAK ABOVE OGDEN. This is an expert nordic tour. Sunday Call leader to register, Phil Ryan, 355-1591.

JANUARY 10-12 LODGE OPEN. Hosted by Jim McCullough, 466-4061.
Fri. - Sun.

JANUARY 11 TIMBERLINE NORDIC SKIING CLINIC. FREE. Call Timberline Sports Saturday for details, 466-2101.

JANUARY 11 BRIGHTON TO HONEYCOMB TO SILVER FORK-INTERMEDIATE ALPINE TOUR. Saturday Suitable for experienced nordic skiers. Meet at 9 am at the mouth of Big Cottonwood. Call leader for details, Oscar Robinson, 278-5009.

JANUARY 11 ANNUAL NOMINATIONS BANQUET. This is the one formal occasion of Saturday the year to gather for dinner, dancing, socializing, and to meet the new candidates for next year's Board of Directors. We will again be meeting at the Four Seasons West, 3618 Highland Drive. The price will be approximately \$7.50 per person and will include set-ups, dinner, dancing and tips. Reservations will be mandatory. The time, final price, reservation information and all details will be announced in the January Rambler. Call Karen Weatherbee, 272-2624, for information.

JANUARY 12
Sunday

MILL F TO SCOTTS PASS AND JUPITER HILL-INTERMEDIATE SNOWSHOE TOUR. Suitable for intermediate nordic skiers. Meet at 9 am at the mouth of Big Cottonwood Canyon. Leader: Kermit Earle, 466-3132.

JANUARY 19
Sunday

ADVENTURE CROSS-COUNTRY TOUR. Organized by Ogden Sierra Club. Int. North Slope Ben Lomond. Meet at Mt Ogden Park, 8 am. Dick Conn, leader, 621-8292 or 777-7215.

JANUARY 24-26
Fri. - Sun.

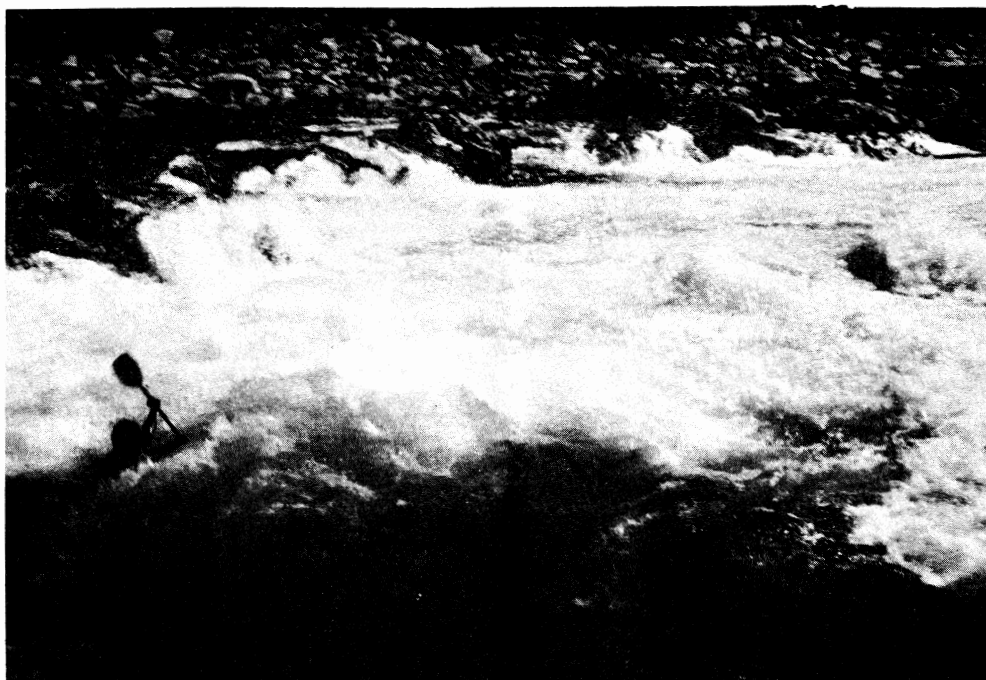
LODGE OPEN. Hosted by Del and Carol Wiens, 272-3182.

Mountaineering Ramblings

by Paul Horton

The Mountaineers' Kegger was a success, largely due to George Lowe's horrifying slide show. Susan Key, Marty Snyder and Judy Ching deserve thanks for helping with the party and the whole thing was made possible by our fine sponsors--John Gottman, Timberline Sports, Starlight & Storm and Great Basin Rainbow.

Dave Smith did us a service by holding the advanced climbing seminars. Those benefiting from his expert advice are John Riley, Lyman Lewis, Jim Dalglish, Barry Evans, Jim Key, Ray Daurelle, John Gottman and Rob Snyder.

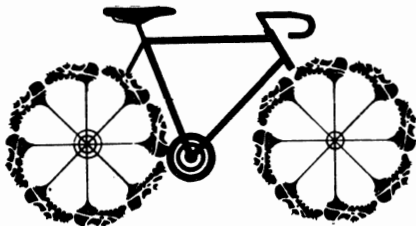


TIMPANGOS G. PFEIFFERHORN



by Jerry Youngblood

Photo Page Four
Digging In - Middle Fork



★ 10 Speeds ★ Accessories ★ Repairs

★ Running and Jogging Shoes ★ Track Spikes

EIGER • FOLLIS • ATALA

We also carry a complete line
of cross-country ski equipment.

BIKES AND SPIKES

5156 So. State ★ 268-1011

- SKIS
- BINDINGS
- POLES
- RUCKSACKS

SKI TOURING 74 75

by Dwight Nicholson

As we all know by now, the snow has been a little late in coming, I only hope by the time you read this, there will be more than what Mark Eubank prophesizes for the next week, which is "a beautiful fall," but no snow!

We are hoping to have a good touring schedule for you this year, but I would like to ask everyone to help on this. If any of you have favorite areas you would like to go to, or would like to see more of a certain type of tour in the schedule, please let me know, for the season can only be as good as the feedback I get from the tourers. This is really important, for I have to know how the season is while it is ongoing, so I can alter it to make it better.

I would like to say something also about avalanches and the Wasatch. There is a very real reason why the Forest Service has placed an Avalanche Study Center at Alta. The Wasatch is famous for avalanches. The combination of steep terrain, heavy snowfall and variable temperatures make it a prime avalanche area. I don't want to frighten potential tourers from skiing, but I do want to make people aware of some of the dangers. There is a good book on the subject (The ABC's of Avalanche Safety by Ed LaChapelle) that you could pick up if you are new to the Wasatch. In January we will be holding a two-day avalanche school to discuss the problem in more detail. Milt Hollander has again consented to keep abreast of the snow conditions as they relate to avalanche danger this year. If you have any questions, you can call him at 277-1416. Avalanche cords and probes will again be required on advanced tours and they can be rented from the tour leader or can be purchased from Dave Hanscom. I really hope this will be another enjoyable but safe touring year.

I am hoping to have a nordic and snowshoe tour every weekend, with the more advanced nordic and alpine tours alternating weekends. I will try to get some mid-week tours into the schedule, and if I can coordinate to full moons, some moonlight tours. I would like to also offer some more exotic or overnight tours, so if any of you want to lead a trip along those lines, I would really like to hear from you.

The season doesn't look very promising when I can still pick tomatoes in my garden in mid-November, but maybe the snow is just holding off, and when it comes it will really come. I am planning on a good touring season, and if Mark Eubank's new weather station in Bountiful smiles on us, maybe it will come to pass.

EARLY BULLETIN

The Grand Canyon River Trip will be from April 26th to May 4th next spring. Plans are already underway for a repeat of this spectacular experience. More details, including price and reservation information, will be available approximately in February, but plan ahead for the time off. Karen Weatherbee will be organizing the trip arrangements.



July 27th & 28th

by Jeff Miller & Judy Weatherbee

The Westwater trip got off to a rather late start (the ice plant was not the final meeting point!!). After a long night's ride we arrived in the Manti La Sal Mountains at a somewhat less than ideal campsite just off a dirt road, on another dirt road. Everyone made the best of finding a level spot to sleep.

The next morning everyone came wandering in from the bushes for breakfast. At 10:30 AM we started up our dirt road with the van and a trailer full of gear and the 14 members of our trip. The plan was to hike up Geyser Pass and climb to the peak (which was approximately 12,600 ft). The road up to "basecamp" became a little too much, so we left the trailer behind. Following our leader, Bob Weatherbee, we started up the ridge through the trees for our assault on the peak. Coming out of the trees with about a mile and another thousand feet in altitude to go, we started up through the loose rocks to the top. The last part of the climb turned out to be a race to the summit with Fran leading the way. We could hardly keep her in sight for the dust and rocks flying as she scrambled up the mountain. The view from the top was well worth the climb, Moab and Dead Horse Point being superb. After a short breather we started down, picked up the trailer and headed for the Westwater launch point.

We were greeted by the ranger who informed us that in the past 6 days 5 rafts had flipped in Skull. We set about filling the rafts, pitching camp, and cooking dinner. We finally turned in all snug in our sleeping bags while visions of Skull danced in our heads.

The second day of Westwater was A DAY, especially for Mike and Mike who joined us and our other kayaker, Marty, at about 7 AM. The shuttle was completed and we all got on the Colorado by 8:45 AM. Funnel Rapid was the first surprise for Judy and Marty. Then, tension began mountain as all the giant commercial boats began piling up to look at Skull. Our two boats pulled in to the left to scout the infamous hole. After scouting and getting back into our boats, we discovered that going upstream can be just as exciting as going downstream. Craig's boat headed up and out to get a good run on the right of a rock and to miss the hole on the left. But, Bob's boat almost went through Skull backwards (shades of Snyder!!). Randy jumped out of the boat, holding onto the rocks and the life-line. Jeff jumped out, trying to hold onto the bow-line and the river bottom?? Judy got so excited that she broke her paddle! But, Skull was conquered. Our rafts and our kayakers went through in fine style. After using a lot brawn, brain (??) and energy through the remaining rapids it was time for R and R. Craig's boat had a fantastic water fight with one of the commercial boats. Susie got abducted, or did she abandon ship? The Taylors had a lovely mud bath. The kayakers rested and let rafters learn the art of kayaking. Take out was hot and dry as usual. Judy fell up the slippery, muddy bank! The girl's dressing room was also the men's dressing room (and restroom??).

Captains: Bob Weatherbee and Craig Marken. Rafter: Susie Curtis, John McComb, Marilyn Creelman, Jeff Miller, Randy and Peggy Taylor. Fran Flowers. Pam Tittes. Elmer Boyd and Judy Weatherbee. Kayakers: Mike O'Mana, Mike Mutek, Marty McKnight. Shuttler: Marlene Austin.



July 13

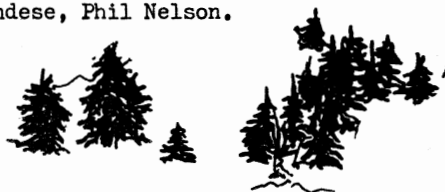
Seven hardy souls met at the Alpine turnoff promptly at 7:30 a.m. and, after consolidating transportation, started on the half hour drive to trail head.

It was a perfect day for hiking - cool and clear, although it did get rather hot later in the day. Approximately four hours after starting out on the northern route, everyone reached the top. The cool, clean, crisp air on the way up the mountain proved somewhat heady as several members of the group engaged in prolonged debate on such weighty matter as: education, religion, philosophy and, of course, Women's Lib. Reacting vigorously to this intellectual turn of events, one member of the group sped off up the mountain, leaving everyone, literally, in her dust.

On top, lunch developed into a gourmet smorgasbord with various hikers producing wine, cheese, grapes, cherries and mandarin orange slices.

The return trip was made via the southern route which produced several slips and numerous blisters on the rather steep and almost non-existent trail.

Peerless trail finder: Bob Weatherbee. Hikers: Bob Bamford, Nola Howard, Susan Morris, Jim Frese, Ivan Cendese, Phil Nelson.



SKI
TOPICS

Free Lectures
Every Tuesday Evening

**CROSS-COUNTRY
SKIS AND SKIING**

7:00 p.m.

Timberline Sports

3155 Highland Drive S.L.C. 466-2101

**WE WILL FEATURE CROSS COUNTRY SKI TOURS
AS LAST YEAR WHEN THERE'S ENOUGH SNOW!**

APPLICATION FOR MEMBERSHIP

WASATCH MOUNTAIN CLUB
3155 Highland Drive
Salt Lake City, Utah 84106

NAME (Print) _____ Telephone _____

Name of spouse (only if spouse wants membership also) _____

Address _____ ZIP _____

Occupation (Optional) _____

I hereby apply for membership in the Wasatch Mountain Club and enclose \$ _____ as my annual membership dues for the year _____, \$ _____ of which is for a subscription to the Rambler for the year and \$4.00 entrance fee. (From January to August, dues are \$6.00 of which \$5.00 are for a Rambler subscription - Spouse dues (non-subscribing) are \$3.00 - plus \$4.00 entrance fee. From September to December, the dues are \$3.00, of which \$2.50 are for a Rambler subscription -- Spouse dues (non-subscribing) are \$1.50 - plus \$4.00 entrance fee.) I (do) (do not) desire to receive the Rambler.

I have attended two Club activities in the past 12 months as required for membership such as hikes, ski tours, camping trips, rock-hound trips or work parties and have been recommended by two trip leaders who are Club members. Social events such as lodge parties, winter socials, etc. are not activities qualifying for membership. I agree to abide by all the rules and regulations of the Club as specified in the Constitution and Bylaws as determined by the Board of Directors.

I am specifically interested in the items checked below:

Hiking _____ Ski Touring _____ Boating _____ Mountaineering _____ Caving _____
Cycling _____ Conservation _____ Writing and Editing _____ Organizing social
activities _____ Lodge Work _____ Photography _____ Other _____

CLUB ACTIVITIES ATTENDED:

1. _____	Date _____	Signature of recommending Trip Leader _____
2. _____	Date _____	Trip Leader _____

(Note: The signature of a Director may be substituted for one Trip Leader.)

Signature of Applicant

Grandeur Peak

October 13

by Stew Harvey

Appropriate to the fact that it was Sunday, the hike began at Church Fork. The bright sun highlighted the lacy autumn gold of willow, birch and box elder along the creek. Once the switchbacks were reached, we enjoyed the rich browns and reds of oak, rose, sumac, and an occasional late maple. Goodro and Flowers were the avant-garde hikers; Harold was romping back to a noon-time deadline before some of the group were halfway up.

Conversation (kids, dogs, vitamins, theatre, plants, ad infinitum) was interrupted by chokecherry sampling.

At the top we noted that though the city was smoggy, the surrounding mountain ramparts looked like a variegated shag rug of blues, greens, golds, browns, and silver. Our leader was asked to bestow a word of wisdom on the summit; rather than to discourse on thrift, virtue, or esthetics, she said "Pull up a soft rock, sit down, and eat your lunch." Jack Noy's dachshund thought this excellent advice, for it got the lunches close to the ground for inspection (he was indulged). The trip down was quick, but people lingered at the bottom, regretting to leave these beautiful parts.

Leader: Jackie Thomas.

Participants: Elmer Boyd, Richard Conn, Fran Flowers, Harold Goodro, Stew Harvey, Friscilla Horton, Yenta Kaufman, Ann Nye, Jack Noy, Schnaps, Mike Treshow VI, Mike Treshow VII, and Karen Weatherbee.

VANISHING SPECIES:

The California Condor is close to extinction.

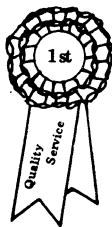
The last of the American Paraquets was observed in a cypress grove in South Carolina in 1904.

The last of the Passenger Pigeons died in the Cincinnati Zoo in 1914.

The last of the Heath Hens was seen in Martha's Vineyard in 1932.

The last of the Golden Eagles died from eating poisoned coyote bait in the Book Cliffs area of Utah.

(Four of the above statements are facts. The fifth may be a fact within a few years!)



We commend the Conservation Committee for its effort to protect wildlife resources.

SAM ALLAN - 487 8901

BLUE RIBBON REALTOR

2870 EAST 3300 SOUTH •

WASATCH MOUNTAIN CLUB, INC.

3155 Highland Drive/Salt Lake City/Utah 84106

Vol. 51, Issue 11 (1974)

Application to mail
at 2nd class postage
rate is pending at
Salt Lake City, Utah.

BOARD OF DIRECTORS

DALE GREEN	PRESIDENT	277-6417
BETTY HENDRICKS	SECRETARY	487-1929
MEL DAVIS	TREASURER	278-3174
KEN McCARTY	BOATING	466-3297
MIKE OMANA	CONSERVATION	561-4537
KAREN WEATHERBEE	ENTERTAINMENT	272-2624
BILL ROSQVIST	HIKING	295-0458
J DEWELL	KAYAKING	295-2754
PHIL NELSON	LODGE	581-9205
MARLENE AUSTIN	MEMBERSHIP	355-4726
PAUL HORTON	MOUNTAINEERING	328-9486
MARY WELCH	PUBLICATIONS	272-6143
DWIGHT NICHOLSON	SKI TOURING	359-6178