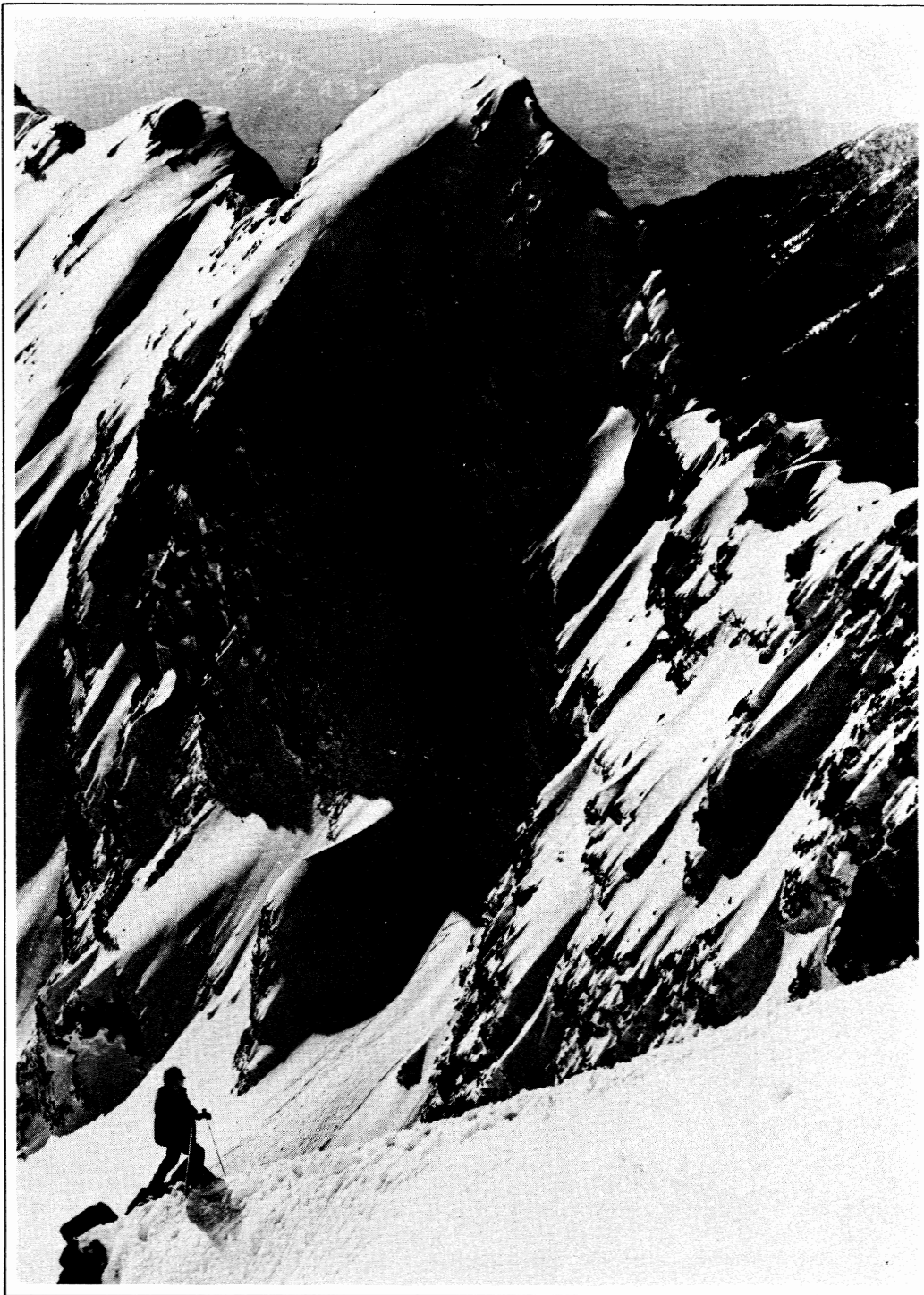


# *The Rambler*

JANUARY 1974



Official publication of *THE WASATCH MOUNTAIN CLUB* Salt Lake City, Utah



PINECREST (Emigration Canyon) ca. 1921

Photo courtesy Dale Green

# Club activities for January 1974

REGISTRATION WITH TRIP LEADERS is important for ski tours since weather and snow conditions can cause cancellation or change in destination. It also aids in organizing car shuttles early enough to avoid delays. Register with the leader by some reasonable hour on the day before the tour.

RATINGS OF SKI TOURS (X,Y) describe the difficulty of the climb (X) and the skiing proficiency required to get down (Y). Both are rated from 1 to 6, in order of increasing difficulty. A detailed description of some popular tours is in the November 1972 RAMBLER. Contact the leader if you are in doubt about your ability to do the tour.

Avalanche information is available from Milt Hollander - 277-1416 - and from the Wasatch National Forest winter sports information recording - 487-2093. The snow rangers at Alta get so many calls that you should use them only as a last resort, and please don't call them late in the evening.

JANUARY 5  
Saturday

Timberline Nordic Skiing Clinic. Meet at Timberline Sports at 9:00 a.m. for a day of x-country skiing instruction.

JANUARY 5  
Saturday

MOONLIGHT (AND COMETLIGHT) TOUR. Snake Creek Pass. Intermediate (2,2). Meet at the Lodge at 6:00 p.m. for a rare treat in evening tours. Weather permitting, we will be able to observe Kohoutek without valley smog to interfere. We will return to the Lodge for hot drinks after the outing. Anyone desiring to stay overnight should contact the hosts. Leader: Chuck Mays, 582-3818.

JANUARY 5-6  
Sat.-Sun.

OPEN LODGE weekend hosts Judy Ching and Bob Weatherbee invite you to bring family, food, warm clothing and snowshoes? Call Judy at 355-4691 or 262-3800 if additional info wanted (about the open lodge!).

JANUARY 5-6  
Sat.-Sun.

SKI TOURING COURSE. Once again we will have two days of instruction for anyone wishing to learn about nordic skiing equipment, waxing, and technique. The course is designed to go beyond the Timberline clinics in all of these areas. Meet at 1:00 p.m. Saturday at the Lodge for a short session before moving to Redman Campground. We will start at 10:30 a.m. Sunday at the Lodge and then take a short tour to an

area where we can practice downhill turns in deep snow. We are asking for a \$5.00 contribution to the ski touring fund for the two-day course. Contact Dave Hanscom for further information (487-6065).

- JANUARY 6  
Sunday WMC/Timberline Beginner Tour. Call Timberline for details before 6:00 p.m. Saturday (466-2101).
- JANUARY 6  
Sunday ADVANCED SKI TOUR. Conditions will determine the destination of this tour. Call the leader for details. Leader: Gale Dick, 359-5764.
- JANUARY 12  
Saturday Timberline Nordic Skiing Clinic. Meet at Timberline at 9:00 a.m. for a day of x-country skiing instruction.
- JANUARY 12  
Saturday SANTAQUIN CANYON NORDIC TOUR. Advanced. This is a very long tour that starts at the valley floor and circles around behind Mount Nebo. Some of the downhill is quite challenging, so you will need both endurance and the ability to turn your x-country skis. The view from the ridge is guaranteed to be well worth your effort. For details on departure, call Dave Smith, 486-2680.
- JANUARY 12  
Saturday MOUNT WOLVERINE SKI TOUR. Intermediate (2,3). The approach will be via the Evergreen lift at Brighton and Twin Lakes Pass. The descent to Lake Mary is a bit steep, so you need to be able to handle the deep snow. Meet at the mouth of Big Cottonwood at 8:30 a.m. Leader: Don Colman, 486-7796.
- JANUARY 12  
Saturday NOMINATION BANQUET. See page 6 for details.
- JANUARY 13  
Sunday WMC/Timberline Beginner Tour. Call Timberline for details before 6:00 p.m. Saturday (466-2101).
- JANUARY 13  
Sunday NEFF CANYON SNOWSHOE TOUR. Intermediate (3,3). The snow is usually deep enough to avoid any hiking at this time of year. The trail has some narrow spots, so skiers should be prepared for excitement on the descent, but the powder in the upper bowl is usually good. Anyone ambitious enough to climb to the ridge can go down into Millcreek. Meet at The Movie at 8:30 a.m. Leader: Phil Nelson, 485-0237.
- JANUARY 13  
Sunday COMET HIKE. We'll try and get a good look at Kohoutek from the top of some small peak in the west desert. Figure on about an hour's drive and an hour's hike. Bring lots of warm clothes. If the weather is bad, we'll try again the next weekend. Meet at Timberline at 3:00 p.m. Call the leader, Paul Horton, at 328-9486 for information.
- JANUARY 13  
Sunday AFTER SKI SOCIAL. It's that time again! All new WMC members are especially invited, come and socialize whether

you ski or not, this is the easiest way to get acquainted. Adults only. Dinner is served from 6:00 p.m. (while it lasts); refreshments too for a nominal fee. Phil and Kay Berger are the hosts. They've moved so call 278-7412 for directions to 2250 E. Pheasant Way (5650 South).

JANUARY 18-20  
Fri.-Sun.

CEDAR BREAKS/BRYCE NORDIC SKIING WEEKEND. Dwight Nicholson will take a group south on Friday evening for two days of touring in the red rock country. Commercial accommodations will be used, so you won't have to camp out in the snow. Call Dwight at 359-6178 for details.

JANUARY 19  
Saturday

Timberline Nordic Skiing Clinic. Meet at Timberline at 9:00 a.m. for a day of x-country skiing instruction.

JANUARY 19  
Saturday

BOWMAN FORK SNOWSHOE TOUR. Beginner (2,2). It's only a short hike from Log Haven to the turnoff that gets you away from the snowmobiles. We'll go as far as the group wants, but probably won't try the ridge this year. Meet at The Movie at 9:30 a.m. Leader: Elmer Boyd, 466-7809.

JANUARY 19  
Saturday

SILVER FORK SKI TOUR. Intermediate (2,3). The tour will start at Brighton and go over Twin Lakes Pass and around to Silver Fork. The upper bowl is fairly steep but wide open, and the lower part is along a wooded road. Meet at the mouth of Big Cottonwood at 8:30 a.m. Leader: Steve Swanson, 484-5808.

JANUARY 20  
Sunday

WMC/Timberline Beginner Tour. Call Timberline for details before 6:00 p.m. Saturday (466-2101).

JANUARY 20  
Sunday

WHITE PINE SKI TOUR. Intermediate (3,3). This is another tour where you work for every vertical foot of downhill skiing, but it is well worth the effort. The terrain is quite gentle, so competent nordic skiers should be able to handle it. Meet at the mouth of Little Cottonwood at 8:00 a.m. Leader: Dick Leining, 364-8982.

JANUARY 26  
Saturday

Timberline Nordic Skiing Clinic. Meet at Timberline at 9:00 a.m. for a day of x-country skiing instruction.

JANUARY 26  
Saturday

AVALANCHE COURSE. The annual avalanche safety course will take place at Zion Lutheran Church beginning at 8:00 a.m. The morning session will include a film and slides, along with discussion of avalanche conditions, avoidance, and rescue. After lunch we will adjourn to a suitable location to practice rescue techniques. The fee for the course is \$2.00 to pay for literature and to help buy avalanche probes for the club.

JANUARY 26  
Saturday

INTERMEDIATE SNOWSHOE TOUR. Conditions will determine the destination of this tour. Meet at the mouth of Big Cottonwood at 8:00 a.m. Leader: Fred Bruenger, 485-1423.

JANUARY 26-27  
Sat.-Sun. LODGE OPEN. Rollin and Betty Hurlbut will be hosts. Families with teenage children are welcome. Please call 277-4547 if you plan to stay overnight, or want more information.

JANUARY 27  
Sunday WMC/Timberline Beginner Tour. Call Timberline for details before 6:00 p.m. Saturday (466-2101).

JANUARY 27  
Sunday FOUR SEASONS RESORT SKI TOUR. Intermediate. Alexis Kelner will lead a group into the area west of Provo Peak where the Four Seasons Resort is planned. Not only is this a beautiful ski tour, but it is also an opportunity to learn enough about the area to comment intelligently to the Forest Service about the proposed development. The tour will follow a road, so nordic skis are the ideal equipment. An early start is planned, so call Alexis at 359-5387 for details.

JANUARY 27  
Sunday AFTER SKI SOCIAL. This time it's at Gale and Ann Dick's home, 1377 Butler, 359-5764. Everyone come to our wanderers-about-the-world and have a good time. Dinner about 6:00 p.m.

FEBRUARY 2  
Saturday Timberline Nordic Skiing Clinic. Meet at Timberline at 9:00 a.m. for a day of x-country skiing instruction.

FEBRUARY 2  
Saturday DOG LAKE SNOWSHOE TOUR. Beginner (2,2). A couple of easy miles up Mill D North Fork gets you to the ridge overlooking Millcreek Canyon and Dog Lake. This is a popular area for nordic skiers, too. Meet at the mouth of Big Cottonwood at 9:30 a.m. Leader: Karen Weatherbee, 582-6799.

FEBRUARY 2  
Saturday POWDER MOUNTAIN MOONLIGHT TOUR. Intermediate. We're trying something different for this month's moonlight tour. Powder Mountain in Ogden Canyon has some superb touring terrain that John Herbert would like to share. We will meet at his house in Ogden about 5:00 p.m. (better bring a lunch) so we can pool cars and be at the upper parking lot at Powder Mountain by 6:00. He lives at 1323 31st St. Turn off route 80 at Harrison Blvd. and then right at 31st St. For more information, call him at 393-7737 or, to save the toll, call Dave Hanscom at 487-6065.

FEBRUARY 3  
Sunday WMC/Timberline Beginner Tour. Call Timberline for details before 6:00 p.m. Saturday (466-2101).

FEBRUARY 3  
Sunday ADVANCED SKI TOUR. Conditions will determine the destination of this tour. Call the leader for details. Leader: Dave Smith, 272-2354.

FEBRUARY 9  
Saturday Timberline Nordic Skiing Clinic. Meet at Timberline at 9:00 a.m. for a day of x-country skiing instruction.

FEBRUARY 9  
Saturday

SMITH-MOREHOUSE CANYON NORDIC TOUR. Intermediate. The first Uinta outing of the year will be in an area that the club has not visited previously. We will ski up Smith-Morehouse and down to the Mirror Lake road. It's a fairly long trek, so you'll need to be in good shape. A relatively early start is anticipated. For details call 487-6065. Leader: Don Carlton.

FEBRUARY 9  
Saturday

ALBION HUT SKI TOUR. Beginner (2,2). From the top of the Albion lift (or the bottom if you're feeling ambitious), we will climb to the head of Albion Basin and try to find the hut buried among the firs. This outing is suitable for any type of equipment. Meet at the mouth of Little Cottonwood at 9:00 a.m. Leader: Paul Horton, 262-4695.

# brighton to honeycomb fork

## SKI TOUR

by Milt Hollander

Saturday morning, December 1st, the weather forecast indicated winds in the afternoon were expected to reach 50 mph. Of the dozen people who had shown an interest in the tour, nine appeared by departure time. Four participants elected to use skins, and the other five waxed their skis with blue, for the ascent near Brighton's Evergreen lift and up to the pass leading into Honeycomb Fork. Despite the increasing wind at the pass, the Brighton side looked inviting enough to try a run.

Unfortunately, the wind had left its imprint in the snow, as did we, exercising our posterior christies left, right, and right on. The wind crust received us with enthusiastic crunching sounds and we answered with a few choice exclamations. Back to the pass, then a descent into the sunshine on the Honeycomb Fork side for

a quick lunch. Ross, Dave, Rolf and Mike took off first. Ross (at the advice of the leader to stay in the drainage) broke a small wind slab slide loose in the first steep dropoff. This resulted in a split decision among the remaining skiers, several skiing the weed-spotted big slope on the right and then dropping into the drainage, and the others electing to stay in the drainage fall line.

The wind by this time was approximating the forecasted fifty miles an hour, making the wind crust even more interesting to ski. George displayed his first aid skills in taping up his broken fiberglass ski pole. The snow did improve somewhat in the lower elevations and the remaining run was relatively uneventful.

Participants were: Ross Pearson, Dave Prouse, Rolf Doebbling, Mike Hendrickson, George Swanson, Dwight Nicholson, Frank West, John Riley, and Milt Hollander.



# *Nomination Banquet*

SATURDAY, JANUARY 12, 1974

Time to dress up once again and fool all your friends. Dresses, makeup, suits, etc. certainly have a way of masking your mountaineering friends. It's better than Halloween.

This year we are having our banquet for the first time at the Four Seasons West, 3618 Highland Drive. We have heard glowing accounts of the nice atmosphere and accommodations there. It is a very large place and we will have more room than usual to circulate and socialize. Happy hour is from 6:30 to 7:30, then dinner followed by a brief meeting at which time recognition is given to those people who have helped out through the year just a little more than the average. We will also finalize the nominations for next year. This will be followed by music and dancing.

Help me make this an especially nice event by remembering to make your dinner reservations with me by January 9 at the latest. That is the absolute deadline. They should not have more than an extra dinner or two, so if you show up unexpectedly, don't be surprised if you cannot be accommodated. Likewise, we must pay them on January 10 for the number of dinners we order. If you sign up and then don't come, you will be expected to pay for the dinner; otherwise, the Club would have to make up the difference.

If you do not wish to have dinner, why don't you plan to come a little later and attend the meeting and then socialize?

Happy hour 6:30 - 7:30      Dinner 7:30      Price per person including tips and setups \$6.00. BYOB.      Call Jane Daurelle, 278-5025. Best time to get me is either 6 - 8 A.M. or 6 - 8 P.M.



# 1974

# **nominations**



by Buzz Marden

After 536 person-hours of telephone calling, 92 pow wows, and 43 smoke signals, the nominating committee for the WMC Board of Directors has come up with a slate for the coming year.

We appreciate all the interest and assistance we have received from club members and especially thank those who have graciously consented to run for office.

Further nominations from the general membership can be made at the Nomination Banquet on January 12th. We request that the nominators have written consent from the nominee or that the nominee be present at the banquet.

## Board of Directors Nominations:

President	Dale Green
Secretary	Betty Hendricks
Treasurer	Mel Davis
Boating	Ken McCarty
Conservation	Virginia Loudon, Betty Bottcher
Entertainment	Karen Weatherbee
Hiking	Bill Rosqvist
Lodge	Phil Nelson
Membership	Jane Daurelle, Marlene Austin
Mountaineering	Paul Horton
Publications	Audrey Stevens and Mary Welch (Co-editors)
Ski Touring	Dwight Nicholson
Kayaking	J. Dewell
3 Yr. Trustee	Bob J. Wright
4 Yr. Trustee	Charlie Keller

# news and notices

## THANKS TO

....George and Georgia Randall for mailing the January RAMBLER.

....Lois Craig for typing help.

....Audreysdottir Adrian for being invaluable.

## WASATCH TRAILS

Please send postpaid \_\_\_\_\_ copies of  
WASATCH TRAILS for which I enclose \$ \_\_\_\_\_.  
Price \$1.50 each.

Name \_\_\_\_\_

Address: \_\_\_\_\_

City \_\_\_\_\_

State \_\_\_\_\_

Zip \_\_\_\_\_

to: Bill Rosqvist  
281 South 1000 East  
Bountiful, Utah 84010

## Rambler Deadline

....for February is Tuesday,  
January 15. Please have  
your articles and schedules  
typed and mailed to:

Attention: RAMBLER editor  
Wasatch Mountain Club  
3155 Highland Drive  
Salt Lake City, Utah 84106

THIS IS NOW THE PICTURE -- on  
pictures. If you have a color  
print, negative or slide which  
you think might turn out well  
in black and white, please consider  
this: the WMC will pay for the  
conversion and enlargement if  
your picture is accepted. So  
please send it in! Deadline for  
such pictures will be the 8th of  
the month, to allow time for pro-  
cessing.

IF YOU WANT photographs, slides,  
negatives, artwork, etc. returned,  
please indicate.

REMEMBER THAT we need black and  
white glossies too!

\*\*\*\*\*

JUST HATCHED: A 9 pound 6 ounce  
girl on November 12, 1973 to  
Carma and David Crowther.

COVER PHOTO: Along the Mount  
Superior - Twin Peaks Ridge.  
Thanks to Alexis Kelner.

Wasatch Mountain Club business is conducted only on the first and third  
Wednesdays of each month. At that time, and only at that time, is the  
mail opened, new membership applications voted on, dues payments  
recorded, address changes made, and all other business requiring board  
action conducted. All board members cannot attend all board meetings  
and although an effort is made to fill in during a member's absence,  
some business is held for action until the next meeting.

# From the President

by LeRoy Kuehl

## ESCALANTE WILDERNESS COMMITTEE SEPARATES FROM WMC

A number of years ago a group of Mountain Club members organized a committee to work for the protection of the Escalante canyons. Although officially a part of the Club, the Escalante Wilderness Committee has, particularly in recent years, functioned as an independent organization.

Several weeks ago the members of the Escalante Wilderness Committee determined to initiate legal action against an oil company which planned to construct a road in the Glen Canyon Recreation Area. Since the Escalante Wilderness Committee was technically still a part of the Mountain Club, such an action would have required a vote of the full membership of the Club. The Committee, therefore, requested that it be officially separated from the Mountain Club, and at its December 5th meeting the Board of Directors granted this request.



VIEW EAST FROM PFEIFFERHORN

Photo by Charley Swift

# HELP SAVE OUR CANYONS

Dear Fellow Photographers:

The SAVE OUR CANYONS Committee needs color slides to update and upgrade the "Help Save Our Canyons" slide show. This show is being shown as often as three times weekly to business clubs, schools, churches, etc.

We are especially looking for slides picturing family canyon enjoyment, hiking, children, picknicking, scouting, as well as pure scenics and landscape slides.

Also needed are "atrocidity" slides illustrating the ravages of development, construction, erosion, floods, fires, famines, etc., For instance we are desperately trying to locate some color slides of Hidden Peak "before" its modification by the bulldozers of Snow-bird.

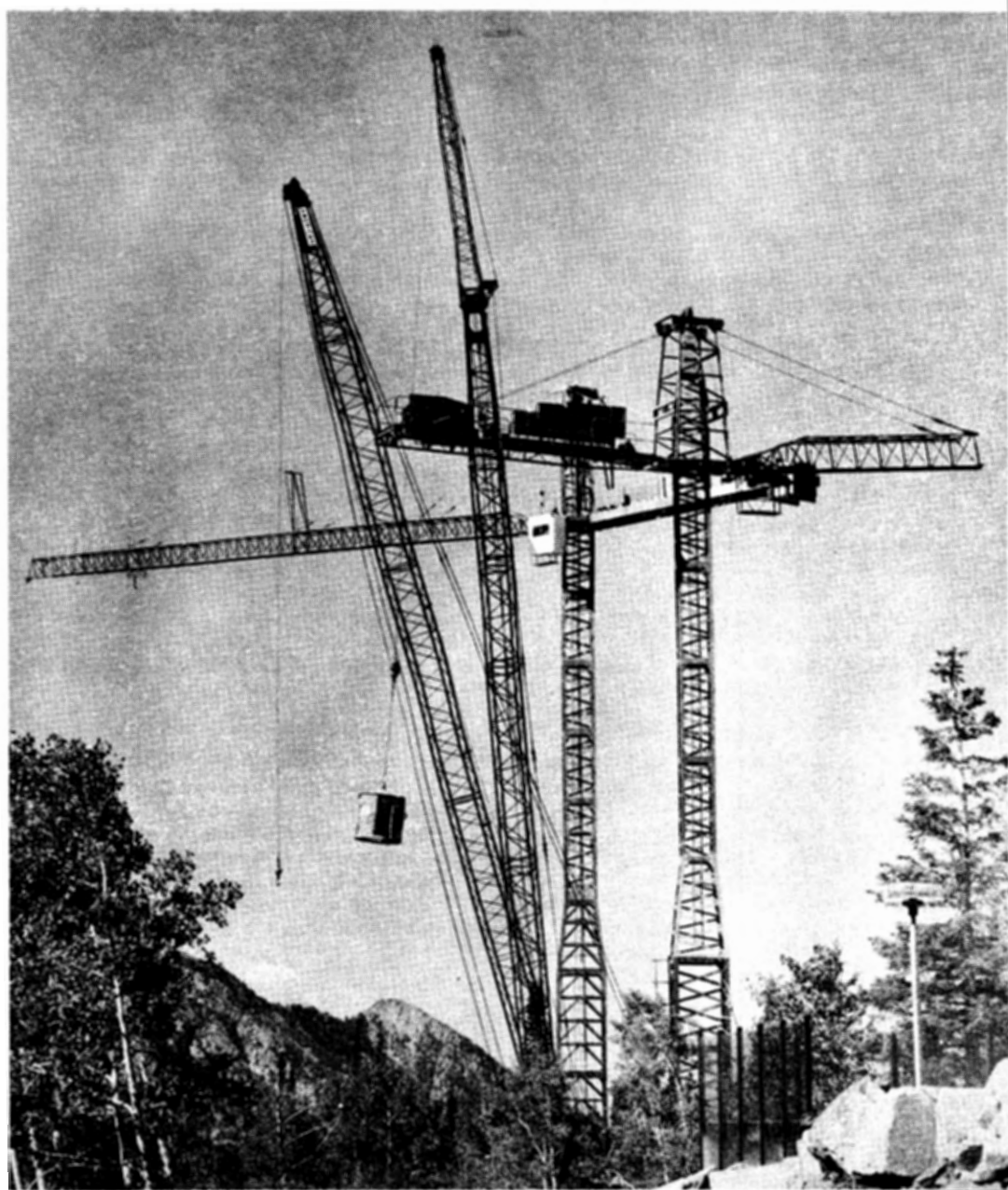
If you have any slides which you feel could be useful to the Committee please bring them to a slide viewing and photographer's meeting at:

the Gale Dick's 1377 Butler Ave.  
Tuesday, January 15, 1974 8:00 P.M.

If you do not have any slides to offer, but would like to help photograph for future Save Our Canyons projects please be sure to attend this meeting. We will be discussing some exciting and challenging photographic assignments for 1974. (Any reader who can handle 16 mm motion picture equipment should contact A. Kelner immediately. We have film and camera, but alas, no competent cinematographer!)

Sincerely,  
Alexis Kelner

**Citizens  
Committee to  
Save Our Canyons**



LITTLE COTTONWOOD CANYON ??? Summer 1973

Photo by Alexis Kelner

# Leaves from the Old WMC

by Audrey Stevens -- source material thanks to Dale Green, club historian

"There are no neighboring canyons and few high peaks that have not resounded to the hearty laughter and banter of the Wasatch Mountain Club during the past season. . . ." If you were a member in 1923, you'd be reading these words from the first WMC publication, the Wasatch Rambler Year Book. This small volume contained a summary of accomplishments, goals, qualifications for members, constitution and bylaws, committees, lists of members, advertising, and even songs and yells, i. e.:

Rambling, shambling, tearing all around,  
We can surely cover ground,  
We climb mountains,  
We climb peaks,  
We're the club that can't be beat.  
Who.... ooo .... oo?  
W....ah....satch! --Lew Stearns

The Club was organized in 1920 with thirteen members. By January of 1923 it had 225 members. Then as now, conservation was a concern. "Although we are known mostly to the public through our trips, we are now exclusively a hiking club and all of our attention is not confined towards good times or outings. We are rapidly becoming a great asset to the community; taking an active part in its development; an interest in its parks, and the city's cleanliness and beauty, our tourist camping grounds and all other natural attractions to tourists." The WMC wanted Utah to be known as "the greatest scenic state in the Union."

There is a sign on the wall at Manwill Plumbing & Heating, Inc. still celebrating this accomplishment: "We are in a great way responsible for the wonderful success of our new attraction, Timpanogos Cave. It was originally discovered by Wasatch Mountain Club members, namely Dr. L. D. Pfouts and Veryl Manwill, of Payson, Utah. The club has been instrumental in opening the cave to the public and we feel that we have done a great deal in advertising its beauty. On one occasion over 300 people were taken to the cave by our club and during the past year numerous smaller groups of visitors have been taken there on our excursions."

The WMC really helped an idea along when they stated in 1923 "Salt Lake City is ideally situated as a winter resort, and it is the intention of the Wasatch Mountain Club to popularize it as such." Not wishing that winter should mean "...the wearing of 'itching heavies' and the spending of one's time around the stove. . . ." members ventured out to skate, ski, sleigh ride, toboggan and go "Alpining". The WMC and the Mayor (also a member) arranged to construct a toboggan slide in the hills near the mouth of Dry Canyon. The city dispatched tractors to grade the slide and furnished water to flood and freeze it. The Chief of Police sent prisoners to help, and "...our own boys have worked hard and succeeded in having it ready by last snowfall. That it is a wonderful success is attested to by the crowds of people who have visited it since the slide was completed."

Some trips were longer in those days to cover the same ground, though less expensive (average cost for a 1 - 3 day outing: 75¢ per person). "Washington's Birthday, February 22, and 23, 24 and 25th will be our Third Annual Skiing Trip to Brighton by way of Park City and the Comstock mine, returning via Big Cottonwood Canyon. This will be the big ski trip of the year. Only those physically able should take the trip."

Those of you who have unravelled transportation details may take some comfort in knowing that in 1923 things were much the same. "The First Annual Camp of the Wasatch Mountain Club will be established at Granddaddy Lakes, July 15th to 25th, inclusive. Machines will leave Salt Lake Sunday morning, July 15th, and the last machine will leave on July 22nd, taking those who desire to stay only one week. All machines return July 25th."

Present WMC members should do some soul-searching on two counts: are you a person who would meet (a) the moral standards for membership in 1923, and (b) the physical exactions required of a "qualified" member? Evidently only those people "of the highest type" need apply, for "our standards are of the highest and we desire only those men and women in our organization who can live up to them." Among the Committees was one "on Membership, Morals and Reception" and its duties included among other things "....to arrange for matrons and patrons, and be responsible for all conduct on trips and at camp." This firm attitude should erase any leer you might wear while reading the following: "We feel that our club offers an opportunity for men and women to get together, out of doors, under ideal conditions..." (wait! there's more!) "...with the best of companions, with a chance to contribute something to an organization which works to popularize the wonders of the Rocky Mountain country...."

The word "highest" must have created a side effect; one could be a regular member or a "qualified" member, and only the latter could hold office on the Board. To "qualify" one must have climbed to an elevation of 11,000 feet, as a member or guest of the WMC. Could you qualify today under that edict?

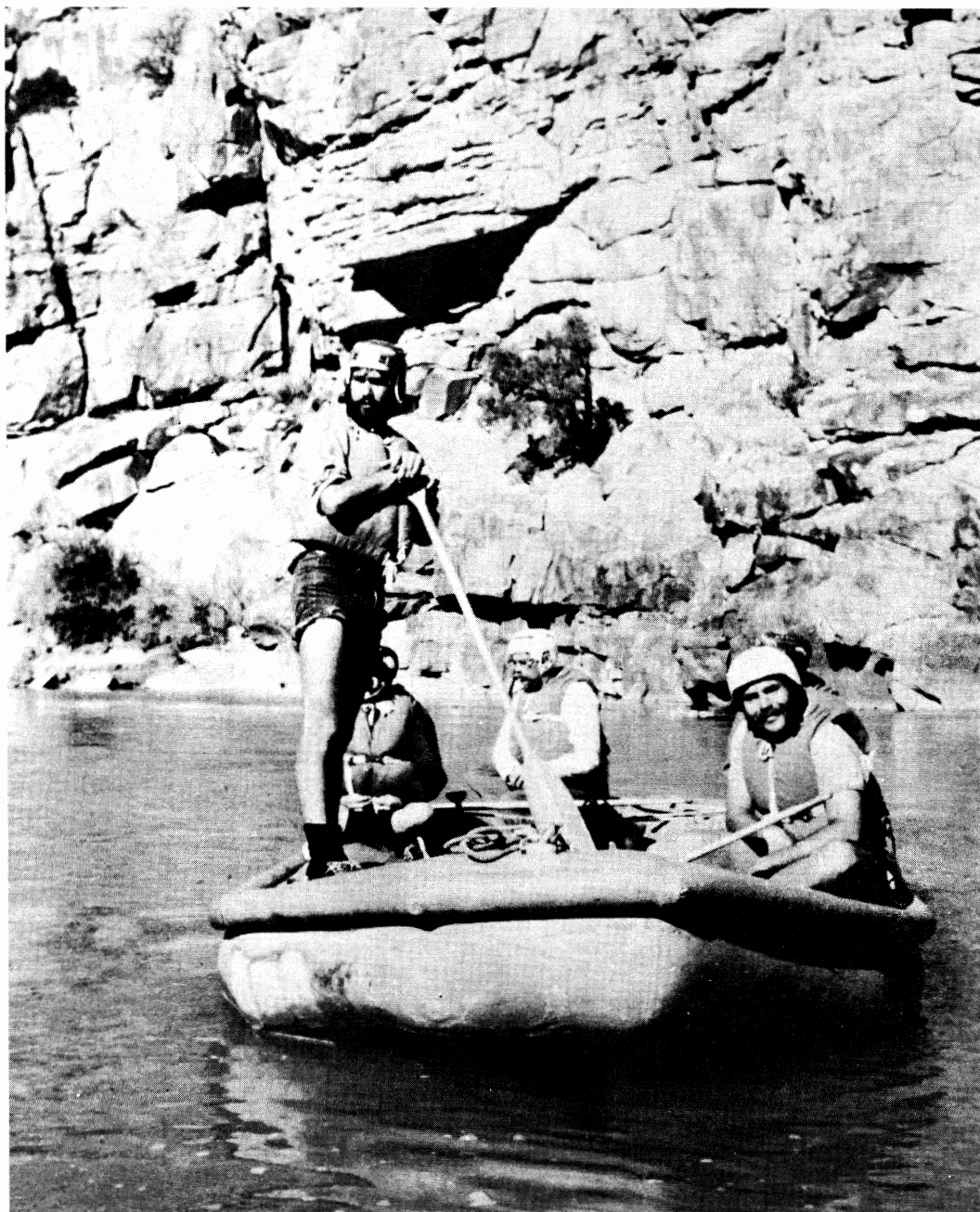
Happily, dues have not increased much. In 1923 they were \$3.00 a year, but there didn't seem to be an entrance fee.

Throughout this early Rambler, along with the dignified advertising, are scattered "in" jokes and sayings. Here is one with a more universal appeal: "Wouldn't it be tragic if Nature turned a trick on us and sent up spring instead of snow, just when we're all set for a toboggan slide?"

(Innocent question, honest!) Could M. Garn be any relation to our present Mayor...? "Those with mathematical proclivities will be interested to know that our friend, M. Garn, was recently discovered in the process of calculating the logarithms necessary to saddle a peanut."

Certain predicaments existed then as now. Note the following true story: "A certain young Englishman - a member of the club - met up with adventure on a recent hike; he stumbled into a nest of rattlesnakes. A moment later, someone called after a streak of dust; 'Hey, what's the hurry, Fred! Why run?' 'Because I cawn't fly,' came back the breathless response."

Yes, Virginia, there was an Arrow Press. The company printed this first Rambler.



*westwater*

Photo by  
Judy Ching



#### A FEW WORDS ABOUT THE COMING SKI SOCIALS

It's time once again for one of our most popular functions - the ski social. We would like to interject a few suggestions which we feel will help eliminate some of the minor perennial hassles produced understandably enough by the close proximity of 60 plus or minus bodies fresh off the slopes.

It is much easier for the host/hostess if people would come with money in smaller denominations than \$20 bills. That always creates a plug in the stream of events.

Secondly, it has been the consensus both from hosts as well as guests that everyone would enjoy these functions more if toddler types were left at home. These socials are considered adult type functions by the majority. Any host's graciousness is strained enough by the great number of people who usually attend these events, but add several toddlers investigating side corners and things can get a little grim.

We hope that everyone will have yet another year of friendly gatherings at these twice-a-month functions.

# Thanksgiving

by Paula Wiens

#### AT THE LODGE

On Thanksgiving Day 88 people and four giant turkeys gathered up at the Lodge.

It was a beautiful day for sledding, skiing, snowshoeing, snowballing and sliding down the roof. We had a great toboggan run down the hill to the parking lot. The only problem was the tree on the curve.

Unfortunately there was one skiing accident. Just before dinner, seven-year-old Daniel Frankel broke his leg in a spiral fracture in two places.

Dinner was served at 4:30. It was a real Thanksgiving dinner: turkey, stuffing, sweet potatoes, and pumpkin pies, plus other good things.

The people there were the Fishers, D. Smiths, Tals, Pandalls, C. Smiths, Zeamers, Sunderbads, Dewells, Rosses, Harveys, DeNevers, Swifts, Frankels, Miles, Richards, G. Wiens, D. Wiens, Loudens, Andersons, Hollanders, K. Weatherbee, and Nelsons.

Thanks to the Nelsons for arranging the day!

# Save Our Rivers Committee

LETTERS NEEDED TO SAVE THE "RIVER OF NO RETURN"--SALMON RIVER--AND  
THE IDAHO AND SALMON RIVER BREAKS PRIMITIVE AREAS

Public hearings were held in Boise, Lewiston and Pocatello, Idaho, during the latter week of November by the U.S. Forest Service to determine the future usage of the Salmon River and the Idaho and Salmon River Breaks Primitive Areas. According to the Wilderness Act of 1964 existing Primitive areas must be designated as Wilderness Study Areas by 1974 to remain protected, or if they are not designated as study areas by that time they will go unclassified and will be opened to development. The Idaho Primitive Areas have been in existence as de facto Wilderness since 1932 and, as such, remain essentially unspoiled except for a few small mining operations. The Forest Service study and proposals are good, supporting 1.5 million acres as proposed Wilderness. However, this area is not extensive enough, and a more complete Wilderness system would include 13 contiguous areas as supported by Governor Andrus of Idaho, the Idaho Environment Council and the River of No Return Wilderness Committee: a total of 2.3 million acres which would establish this as the largest Wilderness in the lower 48 states. This would include the valuable South Fork water shed which is essential to the Wilderness and as an unpolluted tributary to the Salmon River.

The Forest Service's Wild and Scenic River System proposal for the Salmon River is also good and would include 79 miles of Wild River (unspoiled by roads and development), 105 miles of Recreational

River (road access and limited development) and 53 miles of Scenic River (bordered largely by farm and ranch development). Additional suggestions to the Forest Service proposal for the river are a broader river wilderness corridor along the lower proposed stretch of Wild River from Big Mallard Creek to Long Tom Bar and immediate phasing out of motorized commercial raft trips through the Wild River section.

Timber, mining and dam-building interests hope to see the Idaho and Salmon River Breaks Primitive Areas and the Salmon River declassified and left unprotected. There is extensive road building, mining exploitation and logging planned throughout this wilderness region and these activities are strongly supported by mining, forestry, live stock associations, as well as chamber of commerce groups. Your letters are urgently needed to support the Forest Service in its stand for this magnificent Wilderness and Wild and Scenic Rivers System. Don't let the spirit of the Holiday Season deter you from writing immediately, for the deadline for incorporation of letters into the record to be submitted to Congress is January 7, 1974. Give yourself, your loved ones, your friends, your enemies and your opponents a truly unusual, everlasting gift this year--give them a Wilderness and a Wild River. Write your opinion to:

Regional Forester

Federal Building

Ogden, Utah

84401

or

Regional Forester

Federal Building

Missoula, Montana

59801

PLEASE REMEMBER THAT THE DEADLINE IS JANUARY 7, 1974.

HAVE FUN, BUT ALSO BE CAREFUL  
by Fred Volz  
(reprinted from the Ojai Valley News)

"You hiked up Topa Topa alone? What would happen if you fell and broke your leg?" we are sometimes asked. Our answer: that would be a long drag.

Maybe it would be best for everyone to stay out of the mountains, because so many bad things happen there. Better stay out of bed too, because that's the place so many people die. Best place is in front of the TV set on Sundays with plenty of beer to make the Rams' losing less poignant.

But if you must go to the mountains, here are a few helpful hints.

**NEVER GO ALONE!** The minimum acceptable number in a party is four. One should be a licensed physician, one a naturalist - preferably with his PhD - in case the birds attack you, and the third member qualified with extra-sensory perception which enables him to find his way in fog, hail, smog, dust and squealing Boy Scout troops. It would be best if at least one of these was an experienced leader familiar with every square foot of the terrain. Also, the physician should bring along his beautiful blond nurse.

**MAP YOUR ROUTE IN ADVANCE!** Make plenty of copies and drop them off at the nearest Ranger station, police station, city hall, sheriff's office and newspaper (so they'll get locations right when you're missing). You might give one to your wife, in case she's the worrying kind. Now, once on the old trail do not deviate from your planned route by so much as one foot, no matter how attractive the flowers, the view, the shortcuts, or those skinny-dippers at the foot of the waterfall. Keep reminding yourself that off the beaten trail threaten loose rocks, hidden cliffs, rattlesnakes, poison oak, bears and things that moan in the night.

**BE PREPARED FOR ALL EMERGENCIES!** Carry a change of clothing sealed in paraffin in case it rains, a down jacket for when the temperature falls below zero, an extra pair of boots, a supply of precooked food sufficient to last a week, a flashlight with extra batteries and bulbs, the ten essential serums, twenty essential drugs, matches plus two dry sticks to rub together, a snake-bite kit, and a canteen full of Jack Daniels - in case all else fails.

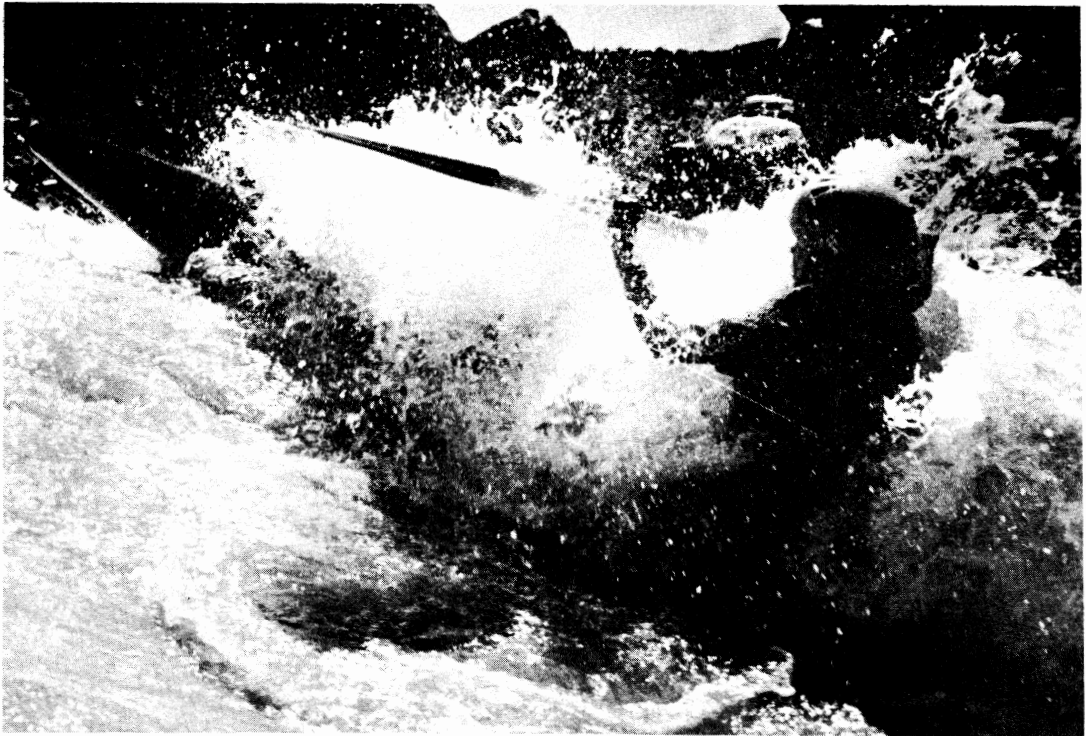
**HAVE FUN!** Remember that this is YOUR National Forest. But be careful. And obey all laws, including natural ones. Ranger Bob may be watching!

## KAYAKING POOL PRACTICE

by J Dewell

Two pool sessions were held in December. We called as many people as we could. I think that nearly everyone heard about the sessions but I am sure some were missed. The sessions were at the YMCA and we were not given approval in time to get it in the Rambler. Only two people came to the Sunday practice and four to the Wednesday practice. No further pool sessions are scheduled at this time.

However, you may register with J Dewell at 295-2754 if you are interested and you will be contacted if we get use of a pool before the next Rambler is published.



APPLICATION FOR MEMBERSHIP

WASATCH MOUNTAIN CLUB  
3155 Highland Drive  
Salt Lake City, Utah 84106  
Phone: 363-7150

NAME (Print) \_\_\_\_\_ TELEPHONE \_\_\_\_\_

Name of spouse (only if spouse wants membership also) \_\_\_\_\_

Address \_\_\_\_\_ ZIP \_\_\_\_\_

Occupation (Optional) \_\_\_\_\_

I hereby apply for membership in the Wasatch Mountain Club. I have attended two Club activities as required for membership, such as, hikes, ski tours, cave trips, camping trips, rock-hound trips, or work parties; and I am genuinely interested in the outdoors. Social events such as lodge parties, ski socials, etc. are not included in the definition of club activities qualifying for membership. I agree to abide by all the rules and regulations of the Club as specified in the Constitution and By-laws as determined by the Board of Directors.

I enclose \$ \_\_\_\_\_ dues and \$4.00 entrance fee. (Please note - from January through August the dues are \$6.00--spouse \$3.00--plus \$4.00 entrance fee. From September through December, the dues are \$3.00--spouse \$1.50--plus \$4.00 entrance fee.)

I am specifically interested in the items checked below:

Hiking\_\_ Ski Touring\_\_ Boating\_\_ Mountaineering\_\_ Caving\_\_  
Cycling\_\_ Conservation\_\_ Writing and editing\_\_ Organizing social  
activities\_\_ Lodge\_\_ Photography\_\_ Other \_\_\_\_\_

CLUB ACTIVITIES ATTENDED:

1. \_\_\_\_\_ Date \_\_\_\_\_

2. \_\_\_\_\_ Date \_\_\_\_\_

RECOMMENDED BY: \_\_\_\_\_ Member \_\_\_\_\_

NOTE: \_\_\_\_\_ Director \_\_\_\_\_

When applying for membership,  
the activities you attend must  
have been within 12 months  
prior to the date of application  
to the Club.

\_\_\_\_\_  
Signature of Applicant

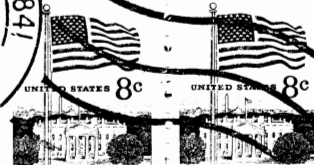
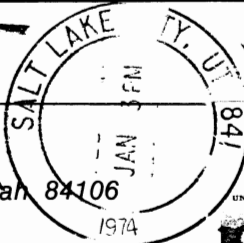


ORDERVILLE CANYON

Photo by J. Baggott

WASATCH MOUNTAIN CLUB, INC.

3155 Highland Drive/Salt Lake City/Utah 84106



*Address Correction Requested / Return Postage Guaranteed*

#### BOARD OF DIRECTORS

<b>LEROY KUEHL</b> , <i>President</i>	<b>582-6890</b>
<i>BETTY HENDRICKS, Secretary</i>	<b>487-1929</b>
<i>RON WEBER, Treasurer</i>	<b>467-3194</b>
<i>BOB EVERSON, Boating</i>	<b>487-0029</b>
<i>SAM ALLEN, Conservation</i>	<b>486-6834</b>
<b>JANE DAURELLE</b> , <i>Entertainment</i>	<b>278-5025</b>
<i>BILL ROSQVIST, Hiking</i>	<b>295-0458</b>
<i>MEL DAVIS, Lodge</i>	<b>278-3174</b>
<i>MARILYN BATEMAN, Membership</i>	<b>466-3132</b>
<i>PAUL HORTON, Mountaineering</i>	<b>262-4695</b>
<i>AUDREY STEVENS, Publications</i>	<b>649-9884</b>
<i>DAVE HANSCOM, Ski-touring</i>	<b>487-6065</b>
<i>J. DEWELL, Transportation</i>	<b>295-2754</b>