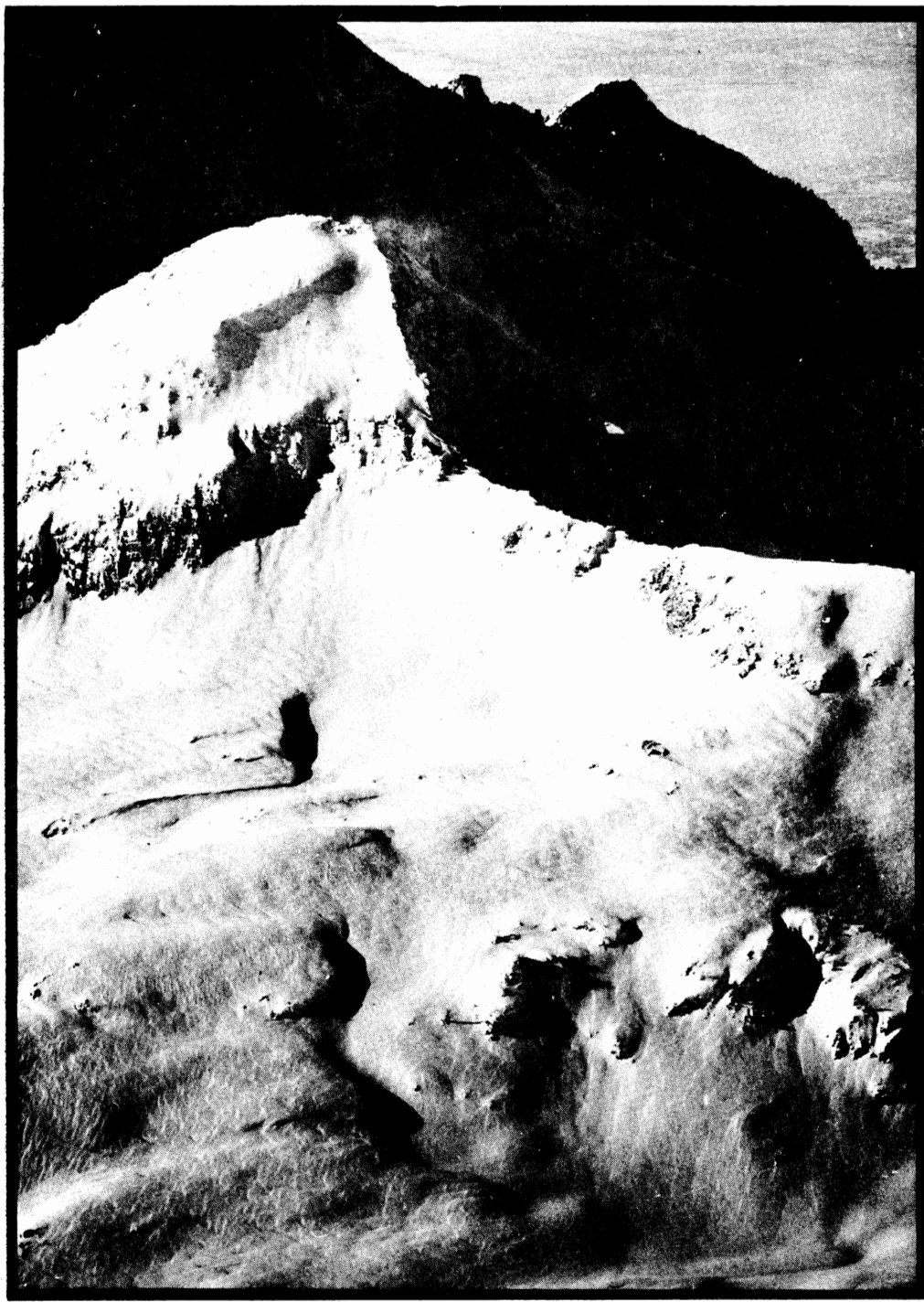


# *The Rambler*

OCTOBER 1974 Vol. 51, Issue 10



*Official publication of THE WASATCH MOUNTAIN CLUB Salt Lake City, Utah*

# news & notices

## IN MEMORIAM

ROBERT BROOKS ALLAN, son of Sam and Dorothy Allan, who died of pneumonia on September 13th.

TIMOTHY ROBERT KORDIG, son of Jim and Dorothy Kordig, who fell while climbing in Big Cottonwood Canyon.

Cover Photo by Alexis Kelner -  
looking west to Pfeifferhorn

## thanks

- ... to George and Georgia Randall  
for mailing the October RAMBLER.
- ... to Lois Craig for typing help.
- ... to Adrian Superdaughter, especially for the headings.

THE RAMBLER is published monthly by the Wasatch Mountain Club, Inc., 3155 Highland Drive, Salt Lake City, Utah 84106. Subscription rates are \$5.00 a year. All correspondence regarding changes of address, mailing, etc. may be directed to the Membership Director at the address above.

Application to mail at 2nd class postage rate is pending at Salt Lake City, Utah.

## Rambler Deadline

... for NOVEMBER is October 15, Tuesday. Please have your articles and schedules typed and mailed to:

ATTENTION: RAMBLER EDITOR  
Wasatch Mountain Club  
3155 Highland Drive  
Salt Lake City, Utah 84106

The Wasatch Mountain Club is governed by a Board of Directors - 13 representatives elected by the membership. Through the courtesy of Timberline Sports, our mail is sent to their address, 3155 Highland Drive, for collection only. The Club's telephone is located at O'Dell's Shoe Repair Shop, 425 South 8th West. This phone is maintained as an answering service only by Life Members 'Pete' (O'Dell) Peterson and wife 'Pinky'. They take time out from their work to answer the phone and relay incoming messages to the proper Director. The Petersons do not hold any office, or attend Board meetings, or are they informed by the Board of official actions. If a trip leader cannot be contacted or is not specified, call the Director of that department for information. The Board strongly desires to hear comments, suggestions, inquiries, and criticisms concerning the operation of your Club. Please feel free to phone any Director or write to the President. Names will be withheld upon request, but anonymous letters will be disregarded.

Mountain Club business is conducted only on the first and third Wednesdays of each month. At that time, and only at that time, is the mail opened, new membership applications voted on, dues payments recorded, address changes made, and all other business requiring board action conducted. All board members cannot attend all board meetings and although an effort is made to fill in during a member's absence, some business is held for action until the next meeting.

# club activities OCTOBER ~ 1974

REGISTRATION INFORMATION: Registration is generally not required for members participating in easy or intermediate hiking (rating below 7.0). Unless specifically stated, advanced hikes (rating above 7.0) require registration with the leader. Adequate equipment is an absolute must. You cannot participate in these events if you have not shown your ability on other hiking activities and if you do not have adequate and well broken in boots with good vibram type soles and suitable protective clothing. Special equipment like an ice ax, etc. may also be specified and you are required to be able to handle such equipment. Remember that these restrictions are set for your own safety and that of your fellow members. For rules regarding participation of children, consult the May Rambler 1974.

OCTOBER 3      EVENING CLIMBING AT STORM MOUNTAIN  
Thursday

OCTOBER 5      MT. AIRE. El. 8,620. Rating 3.0. This is a good beginner's hike.  
Saturday      Children are especially welcome. Meet at The Movie at 10:00 a.m.  
Leader: Bill Rosqvist, 295-0458.

OCTOBER 5      ANNUAL WESTERN PARTY. Mosey on up the canyon, check your guns at the  
Saturday      door, and come on in for some Western hospitality. We meet after sun-  
down (7:30 p.m.) at the WMC Lodge, for a night of high stakes gambling,  
good grub, and some of that red-eye (that means drinks, pardner!). The cost is \$2.50  
plus very reasonable drinks (\$3.00 for non-members). Wear your Western duds. The  
Lodge will be open overnight so bring the usual preparations for the following morning.  
For information and reservations call Katie Hedberg, home 262-5259 or work 268-7295  
or Karen Weatherbee, home 272-2624 or work 325-5165.

OCTOBER 6      NORTH FACE OF MT. OLYMPUS. El. 8,959. Rating 8.0. This is a very  
Sunday      exposed hike requiring a lot of scrambling. Registration with the  
leader is a must. Meet at The Movie at 8:00 a.m. Leader: Harold  
Goodro, 277-1247.

OCTOBER 6      ADVANCED CLIMBING SEMINAR. This is the third session. Contact  
Sunday      Dave Smith, work 466-6714 or home 272-2354, for details.

OCTOBER 10      EVENING CLIMBING AT STORM MOUNTAIN.  
Thursday

OCTOBER 10-14      ZION NARROWS -or- ZION CAR CAMP. The Zion Narrows is a backpacking  
Thurs.-Mon.      trip. We don't have a leader for this part yet. Families are welcome  
on the car camping portion. Call Bill Rosqvist, 295-0458, for details.

OCTOBER 12-14      CANYONLANDS. This trip can be either backpacking or car camping. We  
Sat.-Mon.      need a leader. Call Bill Rosqvist, 295-0458, for information.

OCTOBER 13      GRANDEUR PEAK. El. 8,299. Rating 3.5. This is an easy and enjoyable  
Sunday      hike. Meet at The Movie at 9:00 a.m. Leader: Jackie Thomas, 487-9340.

- OCTOBER 13      ADVANCED CLIMBING SEMINAR, fourth and last session. See Oct. 6.  
Sunday
- OCTOBER 17      A WALK THROUGH THE HIMALAYAS. Gale Dick will be showing slides of  
Thursday      his latest trip through Nepal at a potluck dinner at Ginny Loudens,  
1488 Harvard Ave. Call Ginny, 581-9812, to find out what to bring  
for dinner. The number of people may be limited, so call early. Dinner at 6:30;  
slides at 8:00 p.m.
- OCTOBER 19      NOTCH PEAK. El. approx. 9,400. Rating 7. The top affords a startling  
Saturday      view straight down - 2,700 feet of stupendous limestone cliffs. This  
peak is located west of Delta and requires a 3 hour drive, hence the  
early start. There will be a small transportation charge. Please register with the  
leader. Meet at Denny's at 45th South on the west side of I-15, at 6:30 a.m. Leader  
needs a ride. Leader: Carl Bauer, 355-6036.
- OCTOBER 19      MOUNTAINEERS KEGGER AT THE LODGE. A Horton-Gottman special production  
Saturday      Cheapest Drunk of the Year and Slide Show. For a measly 50¢ you get to  
drink all the beer you want and see George Lowe's remarkable pictures  
of his latest horror climb, the North Face of North Twin, said to be the hardest climb  
ever done in North America. We'll tap a keg around 7, the slide show will start at  
8:00 p.m. Everybody is welcome. The Lodge is open for overnights.
- OCTOBER 20      LAKE MOUNTAINS ROCK TRIP. This is for all you rock hounds. There  
Sunday      will be a short drive to the south. Meet at the Prudential Plaza,  
33rd South and State St., at 9:00 a.m. Leader: Elmer Boyd, 583-2292.
- OCTOBER 27      END OF SEASON BOAT WORK PARTY. This will be the final boating session  
Sunday      of the year to clean, patch, repair and store the gear for the winter.  
Wear old clothes and come to work. Liquid refreshments will be pro-  
vided. 1:00 p.m. at the Ice Plant, 430 West 3rd North.
- NOVEMBER 2      HALLOWEEN COSTUME PARTY. The usual Great Pumpkin celebration gets  
Saturday      underway at 8:00 p.m. at the Lodge. Wear your zaniest. There is a  
nominal fee to be announced. Bring your sleeping bag and breakfast  
goodies if you want to stay overnight. Call Bonnie Omana, 561-4537, and tell her  
you'll be there! Call George Lowe, (1) 782-9329 for further information.
- NOVEMBER 28-29 GRAND CANYON. We have a permit to hike two of the abandoned inter-  
Thurs.-Fri.      canyon trails, the Old Hance and the Grandview. The Hance is a very  
challenging, difficult to follow trail. It requires that you be in  
excellent condition. The Grandview can be done by people of lesser  
abilities. It is easy to follow for the most part and water is available if you know  
where to find it. We need leaders for both routes so if you have an interest call  
Bill Rosqvist, 295-0458.



RECENT SCULPTURE BY SALLY NELSON, wife of our own Lodge Director Phil Nelson,  
is now on display at the Phillips Gallery, 444 East 200 South, Salt Lake City.  
This exhibit will continue from October 6 through 26. Gallery hours are:  
Mon-Fri 10-5, Sat 10-2. She invites all WMC members to a reception on Sunday,  
October 6, from 2 until 5 p.m.





Aug. 31 - Sept. 2 by Carol Huey


We assembled at the Ranger Station in Duchesne and left for the High Uintas Primitive Area in the Hueys' International Scout and Mike's camper. The latter vehicle couldn't handle the jeep road, so all enjoyed a chummy ride in the Scout the last few miles. We hoped to reach Picture Lake before dark, which meant 11 backpacking miles starting at 2 p.m. Following the Brown Duck Trail, we stopped at Atwine Lake for lunch, then on by Clements Lake to East Basin Pass and an excellent view of some major Uinta peaks. About half a mile below Picture Lake there was a group of lakes and as it was getting very dark, we camped at one of them, X-80. Bill had hiked on ahead and we assumed he had gone on to Picture -- but no! Next morning

there he was camped on the other side of X-80 and just as surprised to see us.

That day we confirmed that Picture Lake is very well named; there was a small island in the middle with stepping stones leading to it. Some trekked to Cleveland Pass with an overlook into Ottoson Basin. Then it was 5 miles back to Clements and a friendly chat around the campfire (Ruth's baby bottle of rum was a delightful surprise).

Our hike back to the jeep the next morning was augmented by another unexpected 5 or 6 miles down to the camper -- the jeep wouldn't start! Therefore we were delayed -- to Bill's dismay, as he had a long drive to Brigham City -- but everyone enjoyed each other's company and the trip was certainly made interesting with the unexpected events.

Trip Leader: Hank Huey  
Participants: Carol Huey, Mike MacKay, Yenta Kaufman, Ruth Holland, Bill Yates and John Horvath.



**Ski the Country with Timberline Sports**  
Free Saturday Cross-Country Clinics  
3155 Highland Drive, Salt Lake City, Utah (801) 466-2101

# Mountaineering

by  
Paul Horton

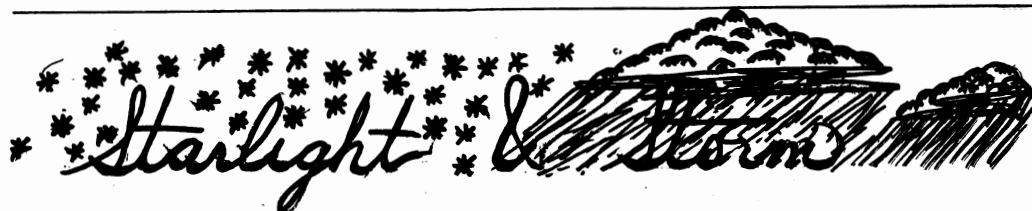
## Ramblings



The outing to the Cirque of Towers got lucky -- the weather was tolerable. We had only a minor storm to remind us of the disasters of the past few years. Various people climbed the regular routes on Camels Hump, Overhanging Tower, and Pingora, and four of us did the superb east ridge of Wolfs Head. Participants were Charlie French, Howard Le Veux, Bill Hughes, John Blakely, Doug Crowe, Jim Key, Danny Horton, Rob Snyder, Ray Daurelle, Larry Swanson, Marsh Ralph, and Paul Horton.

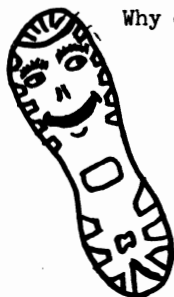
The experience climb of August 24 turned out to be the North Ridge of the Pfeifferhorn where Mike Hendrickson and I had a fine time climbing up the loose boulders.

A few diehards will keep Thursday Evening Climbing going until the snow flies. Everyone is welcome, but come early if you intend to climb.



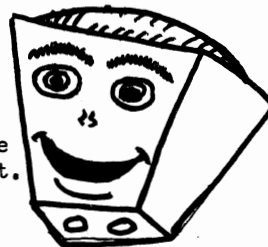
Mountain Boot Repair - Mountaineering Equipment

Why do we have the happiest merchandise around?



I like them  
because they  
make me feel  
and act like new.  
They are my  
sole brothers!

I like them  
because of all  
the climbing  
hardware they have  
and real values like  
1" Tubeweb at 10¢ ft.  
They understand us  
nuts!!!



Come in and find out what you'll like about us, too.

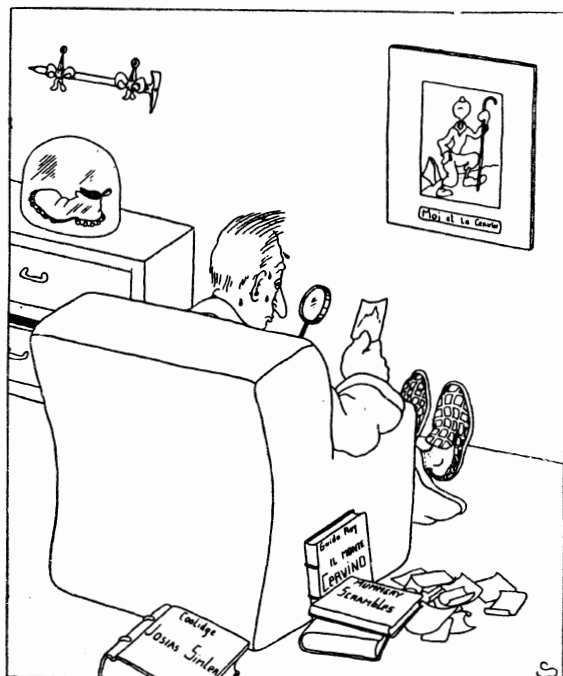
Hours: Mon. - Fri. 4-9  
Saturday 10-6

3288 South 13th East

466-6714



L'Alpiniste FACE-NORD



L'Alpiniste IMAGINAIRE

Cartoons by Samivel - thanks to Gale and Ann Dick

.....  
**★ 10 Speeds ★ Accessories ★ Repairs**

**★ FOLLIS ★ ATALA**

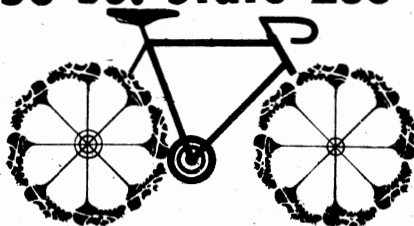
**★ Running and Jogging Shoes ★ Track Spikes**

wax  
 good advice, etc.  
 everything  
 but snow!

EIGER  
 skis, also  
 bindings  
 poles  
 rucksacks

**BIKES AND SPIKES**  
**5156 So. State 268-1011**

BIKES & SPIKES  
 will also carry  
 a complete line  
 of cross-country  
 ski equipment!



So check with us  
 when you feel  
 the call of the  
 x-country wild!

# CATARACT CANYON

S. Nelson

Aug. 31 - Sept. 3

by Stew Harvey

Ever bumped down the switchbacks of a narrow, rocky, harrowing shelf road of a canyon wall at 3 a.m.? 16 passengers in two vans will swear the vehicles bent in the middle. However, the beauty of moonlit Mineral Bottom on the Green River quickly eased us into sleep.

Morning brought cries of "It's still in the van --- stop!" as the shuttlers were driving off to our destination, Hite Landing on Lake Powell.

Our flotilla began as a grotesque barge of three club Marauder boats and Ron Bement's Avon, all lashed together, with a diminutive outboard motor in the stern. The flow on the Green was 3,000 sec/ft, which meant lazy floating interrupted by the leg-powered crossing of sand bars. On that first afternoon, in a fit of joi de vivre, Bob Everson threw himself backwards off the stern, dislocating a shoulder. Drs. Nelson and Wilson reduced the dislocation and fashioned a neck splint, and grimacing Bob was laid supine on the craft. We then made a sober but hasty way downstream in vain hope of reaching a ranger. Camp was made just below Queen Anne's Bottom; a dirty bottom it was, and the boats were unloaded in muck. We almost

lost our "teeny pumps" (Wilsonese for tennis shoes) in the mud!

Next morning the ranger was intercepted, but Bob elected to remain with the trip, since he had improved overnight.

The canyon of the Green, from Mineral Bottom to the confluence, I declare to be the club's most beautiful river run. Moreover, beaver, bighorn sheep, snowy egrets, and especially many great blue heron were observed.

We arrived at the confluence at dusk and put into Spanish Bottom almost at dark. The bank there was so high that steps had to be put into it, and the boats were tied up to a dead-man. That night there was the first happy hour, and joyous river rats disappeared (fell?) over the bank for a ritual dip.

Next morning many hiked up to the Doll's House formation. In the early afternoon everyone, hard-hatted this time, was again aboard, and we headed into Cataract Canyon. Low water left many exposed rocks, but the early rapids were just good safe fun. The upper furious segment of Mile-Long Rapid was negotiated without incident, but the lower segment made its claims.

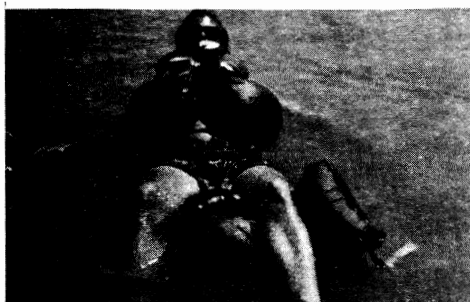




BOB (ODIN) EVERSON BEFORE.



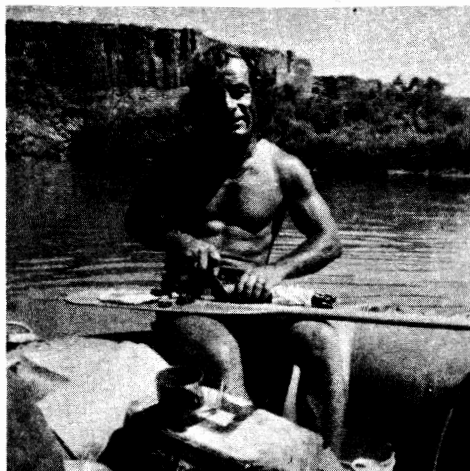
AND AFTER



RANDY TAYLOR DEMONSTRATES  
FLOATING WITH BEER CAN



ELMER BOYD SHOWS HOW  
IT'S DONE WITHOUT



DINING WITH DAVE MANSKER



HAPPY HOUR WITH JINNY, STEW  
AND BOB N. WHO'S ALREADY HAD  
ENOUGH

'Twas said that several of the party went bathing, though to me this is only hearsay, yours truly having run this rapid beneath the boat.

At Upper Big Drop, we observed a commercial gargantua jammed among the rocks. Here the proud WMC reacted to an audience in its usual way -- beat its collective chest and whooped right through the huge holes and disguised rocks. However, we put in below and went back to help pull Gargantua off the rocks. Lower Big Drop featured house-sized boulders looming up in the river. Communications from Glorious Leader somehow became garbled, and two boats went over Satan's Chair, a needle-threading, left-cutting maneuver between two boulders (the arms), down the back, and off the seat to the violent floor. After more but safer white water, we reached Lake Powell and made camp on a sand bar a couple of miles above Gypsum Creek. In the moonlight, we who remember sadly imagined ghosts of the rapids now covered by the lake.

The cooks were up at 5:00 a.m.; we had miles of lake to go, once again in barge formation. The trip was spiced by our coming upon a houseboat with two streaking couples, who donated a six-pack of beer to our cause. Hite was reached after sundown. We paddled for the last half-mile, bemused by the timing of our running out of gas.

As we left Lake Powell, a yellow moon rose over the lake, its reflection making a ribbon across the water. It beckoned, and we pledged that we would come again.

Trip leader: Bob Everson.  
Boat Captains: Dave Mansker, Ron Bement, Ken McCarty, Stew Harvey.  
Paddlers: Bob Nelson, Bob Wilson, Dorothy Waskowski, Audrey Stevens, Randy and Peggy Taylor, Elmer Boyd, Jackie Thomas, Paula Cleverly and Barbara Brush.

when you buy or sell



FIRST QUALITY SERVICE

residential and

income

properties

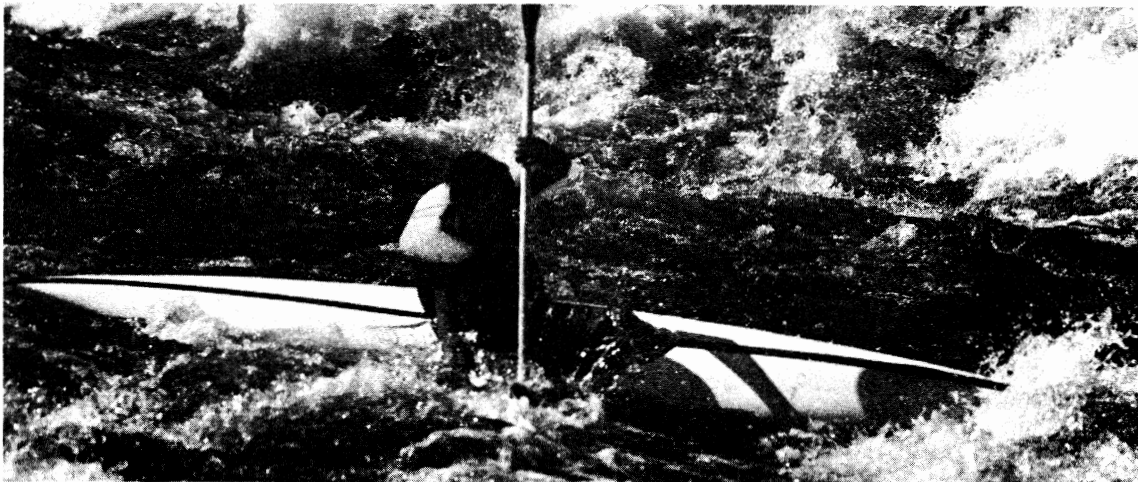
• SAM ALLAN'S NEW

**BLUE RIBBON REALTY**

PHONE 466-2241



2870 E. 33rd South  
Salt Lake City  
SLC 84109



SALE - SALE - SALE - SALE!!!  
20% off until our closing-doors time, October 14th.  
However, anyone can call 561-1088 for our good services  
and supplies after that date.

## WHITEWATER!!

FIND OUT WHAT IT'S ALL ABOUT AT

# ***intermountain whitewater***

KAYAKS, CANOES, RAFTS, AND EXPERT RIVER RUNNING ADVICE

130 EAST 33rd SOUTH

467-1334

HOURS: NOON TO 6 PM  
MONDAY THROUGH FRIDAY

SAT. & SUN. CLOSED FOR BOATING

# Gates of Lodore<sup>74</sup>

August 10-12 by George Lowe

Was this really a WMC river trip? Boats arrived at takeout on time (some were early); the return bus was there waiting; we were back at the Ice Plant at the very early hour of 9:00 p.m. All this made me wonder, but as I looked on the trip from start to finish, there is evidence of the usual WMC.

To start the trip, the bus was late, as the driver waited 27 futile minutes for the freight train. Then he toured us through West Salt Lake City (another wrong turn) and saw the sights (girls on 2nd South). The tour ended at a Utah State Liquor store because the first hour of the trip was too much for some (Ice Plant to liquor store on 2nd South took an hour.) However, the group arrived at the Gates of Lodore almost on schedule.

Since this trip was Women's Lib all the way, the men planned all meals and did a stupendous job -- for instance, Huevos Rancheros with a banana bread centerpiece and beef kabobs, mushrooms and all the trimmings.

The water conditions varied with good water Saturday and Sunday but low water on Monday. All boats came through the big rapids with only three mishaps: in a rapid, Bob Weatherbee's rear somehow draped over the end of his boat and he got very

wet, which of course he deserved after captaining his boat away from every water fight of the day. The boat carrying Bill V., McDoom, George and Georgia R., and Fran F. shot into an eddy instead of the rapid at Lower Disaster. In Hell's Half Acre, Mary M. (unhelmeted for the first time) flew into the center of the boat where her head and Kermit Earle's head collided. Painful!

The kayaks shot through the rapids in good form, with Mike H. and Mike G. doing a few falls in the whitewater but only to cool off, of course. Jim M. was the only kayaker of seven to escape being turned over on the trip. In still water, Mike H. found it profitable to roll for the commercial boats as they furnished a beer per roll. Some racket! Marty M. kept up the Women's Lib trip theme by doing an excellent job in a kayak.

The Women's Lib boat (Judy D., Kate, Sue, Gail C. Lois L., and Captain June V.) won the distinct honor of being the slowest boat of the trip -- too much bottom, I guess. Water fights were frequent despite the cold 45° water. Weatherbee kept the driest boat Saturday, but his crew (Peggy and Randy T., Jerry and Alberta, and Oliver) was then the target for all on Sunday and Monday. Monday, Bob was less than honorable as he sped past Women's Lib, throwing buckets of water after we had formed a truce. Mike G. is awarded the Cruncher Award as he crunched Kermit's head and Mike Hughes' kayak.

For the highlight of the trip, I'm sure all members would vote for the evening at Jones Hole with ice cubes in the drinks, a home built sauna with requisite dip afterwards, and the real entertainment -- SKUNKS. They joined the popcorn feast around

the campfire and provided the patter of four feet across sleeping bags during the night.

Monday we engaged the ranger boat in a wet duel of the buckets. Also, June V., trip leader, was ceremoniously thrown into the water and she retaliated with a mud fight.

Thus ended a very successful voyage through the Gates of Lodore. The trip was so successful in fact that Mike Omana was given the "Bitch of the Trip" award (he didn't get to go!).

Trip Leader: June Viavant.  
Boaters: Randy and Peggy Taylor, Larry Spiegel, George and Georgia Randall, Elmer Boyd, Craig Marken, Kermit and Marilyn Earle, Sue Curtis, Oliver Tajiras, Gail Campbell, Lois Lowe, Fran Flowers, Alberta and Jerry Codd, Bob Weatherbee, Judy Davis, John (McDoom) McComb, Mary Manley, Kate Hedberg, and Bill Viavant.  
Kayakers: Kathy and Mike Gallagher, Dan Thomas, Marty McKnight, Jim Mason and Mike Hughes.



Maybe someone can tell us what went on in the early '50's - is this what the well-dressed cross-country skier wore?

## DEVIL'S CASTLE

by Carl Bauer

August 25 was a day of gentle camaraderie for ten old friends and new, with an Albion rendezvous. There, new cabins and ski lifts are mute harbingers of culminations such as Watergate and "Peace with Honor."

At Timberline and the Ramparts of the Devil's Castle, tortured flora attested aridity of a different sort, and meager consolation that not all adversity has a common denominator of greed.

Participants: Leader, Carl Bauer; Beth Randall, Melissa Litton, Yenta Kaufman, Ruth Henson, Barbara Woody, Robert Woody, Jack Noy, Gerry Powelson and Charles Lesley.

## Mt. Wolverine and Tuscarora

August 11

by Mike Hendrickson

Nine enthusiastic hikers joined together for a somewhat semi-leisurely hike to the adjoining peaks above the Brighton area. The hike proceeded past Twin Lakes to the pass, then up the ridge to the first peak, which we learned was named for a lady of somewhat disputed repute in the old boom town of Alta. After the history lesson, the group hiked to Wolverine for lunch, then to Tuscarora, on to Catherine, Martha, and Mary Lakes, and finally returned to Brighton and the trip home.

Participants were: Bonnie Baty, Barbara and Bob Woody, Jack Noy, Doug Stark, Janelle Rouze, Emil Lawton, Cathy Crookston, and Leader Mike Hendrickson.

A P P L I C A T I O N   F O R   M E M B E R S H I P

WASATCH MOUNTAIN CLUB  
3155 Highland Drive  
Salt Lake City, Utah 84106

NAME (Print) \_\_\_\_\_ Telephone \_\_\_\_\_

Name of spouse (only if spouse wants membership also) \_\_\_\_\_

Address \_\_\_\_\_ ZIP \_\_\_\_\_

Occupation (Optional) \_\_\_\_\_

I hereby apply for membership in the Wasatch Mountain Club and enclose \$ \_\_\_\_\_ as my annual membership dues for the year \_\_\_\_\_, \$ \_\_\_\_\_ of which is for a subscription to the Rambler for the year and \$4.00 entrance fee. (From January to August, dues are \$6.00 of which \$5.00 are for a Rambler subscription - Spouse dues (non-subscribing) are \$3.00 - plus \$4.00 entrance fee. From September to December, the dues are \$3.00, of which \$2.50 are for a Rambler subscription -- Spouse dues (non-subscribing) are \$1.50 - plus \$4.00 entrance fee.) I (do) (do not) desire to receive the Rambler.

I have attended two Club activities in the past 12 months as required for membership such as hikes, ski tours, camping trips, rock-hound trips or work parties and have been recommended by two trip leaders who are Club members. Social events such as lodge parties, winter socials, etc. are not activities qualifying for membership. I agree to abide by all the rules and regulations of the Club as specified in the Constitution and Bylaws as determined by the Board of Directors.

I am specifically interested in the items checked below:

Hiking \_\_\_\_\_ Ski Touring \_\_\_\_\_ Boating \_\_\_\_\_ Mountaineering \_\_\_\_\_ Caving \_\_\_\_\_

Cycling \_\_\_\_\_ Conservation \_\_\_\_\_ Writing and Editing \_\_\_\_\_ Organizing social

activities \_\_\_\_\_ Lodge Work \_\_\_\_\_ Photography \_\_\_\_\_ Other \_\_\_\_\_

**CLUB ACTIVITIES ATTENDED:**

1. \_\_\_\_\_ Date \_\_\_\_\_ Signature of recommending Trip Leader \_\_\_\_\_

2. \_\_\_\_\_ Date \_\_\_\_\_ Trip Leader \_\_\_\_\_

(Note: The signature of a Director may be substituted for one Trip Leader.)

\_\_\_\_\_  
Signature of Applicant



July 28

by Betty Hendricks

To Hiking Director: Please don't schedule a Mount Olympus hike on a hot day in July.

In spite of the too warm, it was a good hike. I think most of us learned that we must carry more water when it is that warm. We each had at least a quart, and our illustrious leader had seven quarts or more. However, we were completely out of water by the time we got to the ridge coming down from the peak.

Participants: Leader, Larry Swanson; Guide, Charles Keller; Pace Setter, Betty Hendricks; Walter Haas, Pat Treadway, Lew Hitchner, Bill Swander, Doug Willett, John French, Charlie French.



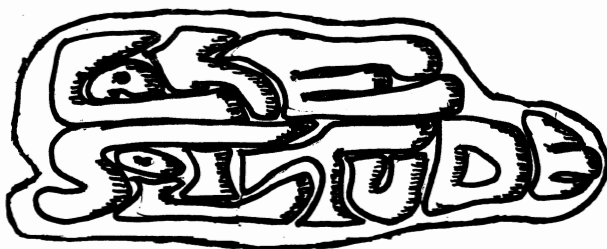
## TRAIL GUIDES

---

Wasatch Trails \$1.50  
HIGH UINTA TRAILS \$2.95  
Cache Trails \$1.50

postpaid from:

**Wasatch Publishers, Inc.**  
4647 Idlewild Rd.  
Salt Lake City, Ut. 84117



Sunday, Sept. 8

by Norm Viss

We left the Brighton Store at 10:15 for a leisurely walk toward Lake Solitude. Binoculars helped to bring in focus a marmot, some hawks, and an unidentified type of woodpecker. After reaching the lake and inspecting some nearby mine shafts, the group diverged,

with four heading back down the same path toward Brighton, while three of us continued up over the pass to Twin Lake Reservoir and down again by way of the Millicent Slope.

Participants were: Betty Bottcher, leader; Karen George, Beth Davis, Ed and Leona Trainer, Norm Viss and Clare Davis.

**WASATCH MOUNTAIN CLUB, INC.**

3155 Highland Drive/Salt Lake City/Utah 84106

Vol. 51, Issue 10 (1974)

Application to mail  
at 2nd class postage  
rate is pending at  
Salt Lake City, Utah.

**[FE****BOARD OF DIRECTORS**

|                  |                |              |
|------------------|----------------|--------------|
| DALE GREEN       | PRESIDENT      | 277-6417     |
| BETTY HENDRICKS  | SECRETARY      | 487-1929     |
| MEL DAVIS        | TREASURER      | 278-3174     |
| KEN McCARTY      | BOATING        | 466-3297     |
| MIKE OMANA       | CONSERVATION   | 561-4537     |
| KAREN WEATHERBEE | ENTERTAINMENT  | 272-2624     |
| BILL ROSQVIST    | HIKING         | 295-0458     |
| J DEWELL         | KAYAKING       | 295-2754     |
| PHIL NELSON      | LODGE          | 581-9205     |
| MARLENE AUSTIN   | MEMBERSHIP     | 355-4726     |
| PAUL HORTON      | MOUNTAINEERING | 328-9486     |
| AUDREY STEVENS   | PUBLICATIONS   | (1) 649-9884 |
| DWIGHT NICHOLSON | SKI TOURING    | 359-6178     |