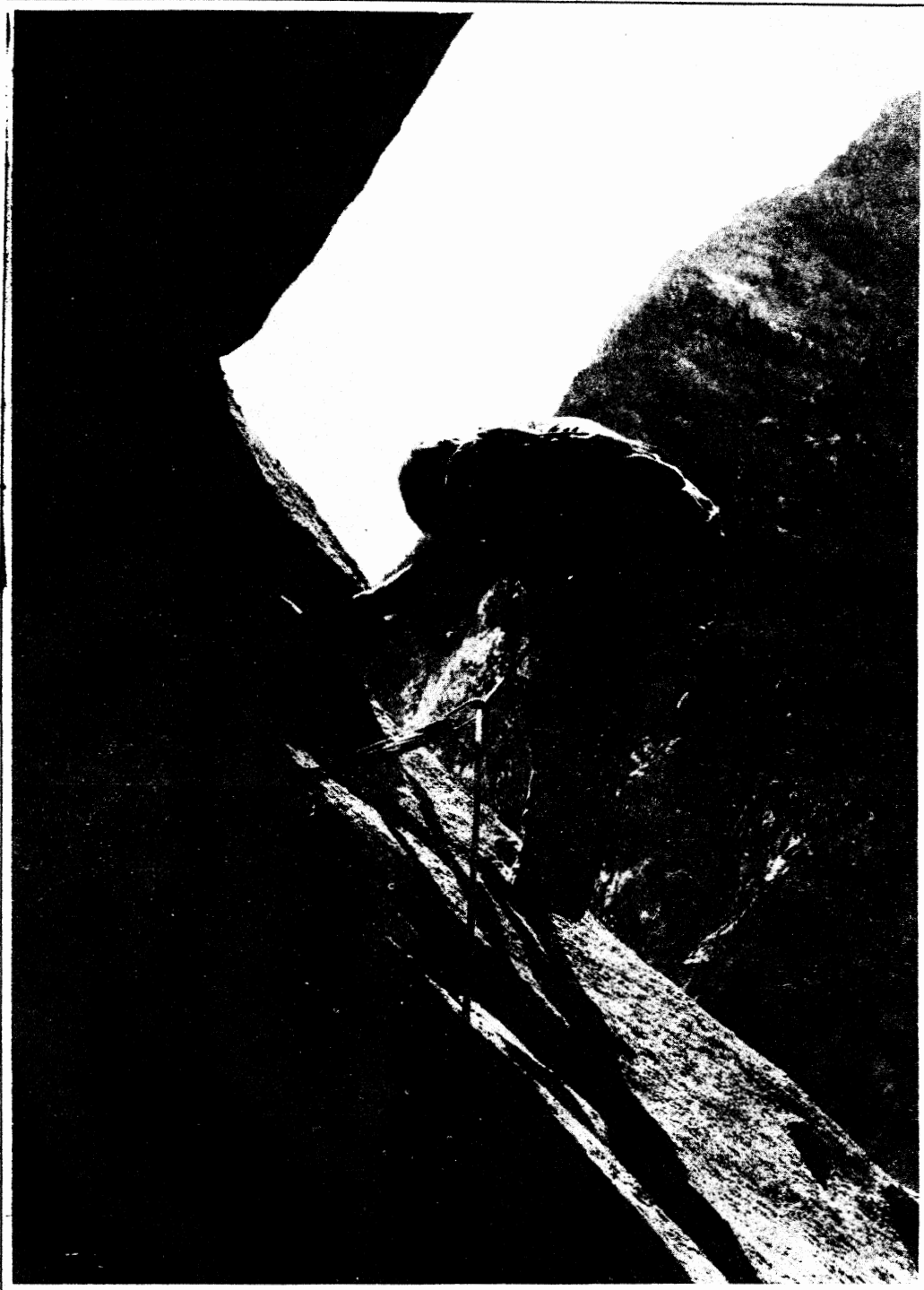


The Rambler

SEPTEMBER 1974 Vol. 51, Issue 9



Official publication of THE WASATCH MOUNTAIN CLUB Salt Lake City, Utah

news & notices

CORRECTION: Last month's cover photo was really the Lake Room in Lehman Cave taken by Alexis Kelner.

thanks

... to George and Georgia Randall
for mailing the September RAMBLER

THE RAMBLER is published monthly by the Wasatch Mountain Club, Inc., 3155 Highland Drive, Salt Lake City, Utah 84106. Subscription rates are \$5.00 a year. All correspondence regarding changes of address, mailing, etc. may be directed to the Membership Director at the address above.

Application to mail at 2nd class postage rate is pending at Salt Lake City, Utah.

KAYAKERS TAKE NOTE! Starting on September 14th and continuing for 10 weeks will be kayaking sessions at the Murray High School Pool. Sessions will include eskimo roll practice, kayak water polo, and English slalom practice. They will run from 11 am to 1 pm and the whole 20 hours will cost only \$10. Contact Roger Turnes at Intermountain White-water, 467-1334 or at home, 561-1088.

Rambler Deadline

... for OCTOBER is September 15, Sunday. Please have your articles and schedules typed and mailed to:

ATTENTION: RAMBLER EDITOR
Wasatch Mountain Club
3155 Highland Drive
Salt Lake City, Utah 84106

Cover Photo: Marshall Ralph
on Split Pants by Dennis Lurville

The Wasatch Mountain Club is governed by a Board of Directors - 13 representatives elected by the membership. Through the courtesy of Timberline Sports, our mail is sent to their address, 3155 Highland Drive, for collection only. The Club's telephone is located at O'Dell's Shoe Repair Shop, 425 South 8th West. This phone is maintained as an answering service only by Life Members 'Pete' (O'Dell) Peterson and wife 'Pinky'. They take time out from their work to answer the phone and relay incoming messages to the proper Director. The Petersons do not hold any office, or attend Board meetings or are they informed by the Board of official actions. If a trip leader cannot be contacted or is not specified, call the Director of that department for information. The Board strongly desires to hear comments, suggestions, inquiries, and criticisms concerning the operation of your Club. Please feel free to phone any Director or write to the President. Names will be withheld upon request, but anonymous letters will be disregarded.

Mountain Club business is conducted only on the first and third Wednesdays of each month. At that time, and only at that time, is the mail opened, new membership applications voted on, dues payments recorded, address changes made, and all other business requiring board action conducted. All board members cannot attend all board meetings and although an effort is made to fill in during a member's absence, some business is held for action until the next meeting.

CLUB ACTIVITIES FOR SEPTEMBER 1974

REGISTRATION INFORMATION: Registration is generally not required for members participating in easy or intermediate hiking (rating below 7.0). Unless specifically stated, advanced hikes (rating above 7.0) require registration with the leader. Adequate equipment is an absolute must. You cannot participate in these events if you have not shown your ability on other hiking activities and if you do not have adequate and well broken in boots with good vibram type soles and suitable protective clothing. Special equipment like an ice ax, etc. may also be specified and you are required to be able to handle such equipment. Remember that these restrictions are set for your own safety and that of your fellow members. For rules regarding participation of children, consult the May Rambler 1974.

- | | |
|------------------------------|---|
| SEPTEMBER 5
Thursday | EVENING CLIMBING AT STORM MOUNTAIN |
| SEPTEMBER 7
Saturday | LAKE BLANCHE. El 8,900. Rating 5.0. Leader Ruta Derijmanis, 272-1412. Meet at the mouth of Big Cottonwood Canyon at 9 am. |
| SEPTEMBER 7-8
Sat - Sun | LODGE OPEN. Come around 3 pm Saturday for a short afternoon hike, a buffet dinner, and an overnite at the lodge. Everyone welcome. Plan to eat around 7 pm. Hosts are Sam and Dorothy Allan. Call 486-6834. |
| SEPTEMBER 8
Sunday | AMERICAN FORK TWINS. El 11,489. Rating 7.5. Leader Yukio Kachi, 466-8428. Meet at the mouth of Little Cottonwood Canyon at 8:30 am. |
| SEPTEMBER 8
Sunday | LAKE SOLITUDE. El 9,070. Rating 1.0. Leader Betty Bottcher, 484-6692. Meet at Brighton store at 10 am. |
| SEPTEMBER 11
Wednesday | ESCALANTE WILDERNESS COMMITTEE MEETING at the Hovinghs, 721 2nd Avenue, 359-4791. |
| SEPTEMBER 12
Thursday | EVENING CLIMBING AT STORM MOUNTAIN |
| SEPTEMBER 14-15
Sat - Sun | KAYAKING - WESTWATER. Several possibilities are open for this trip: camp one night in the canyon, run the river twice, run the river once and go hiking in some nearby area. Let me hear from you and we will try to make it a trip everyone will enjoy. Generally an advanced trip, but good recovery after every rapid means we can take some good beginners. Call J. Dewell, 295-2754. |
| SEPTEMBER 14
Saturday | REYNOLDS PEAK. El 9,400. Rating 4.5. Family Hike. Leaders, Del and Carol Weins, 272-3182. Meet at the mouth of Big Cottonwood Canyon at 9 am. |

SEPTEMBER 15 PARK CITY RIDGE RUN. El 10,000. Rating 7.5. Leader Harold
Sunday Goodro, 277-1247. Meet at the old horse corral at the head of
Mill Creek Canyon (where the paved road ends) at 8 am.

SEPTEMBER 15 BEN LOMAND. Rating 6-7. Leader Bill Yates, 1-723-3853.
Sunday Meet at the Bank of Utah in Ogden at 200 South and Washington
at 8:30 am.

SEPTEMBER 19 EVENING CLIMBING AT STORM MOUNTAIN
Thursday

SEPTEMBER 21-22 WHITE FIR PASS - GOBBLERS KNOB OVERNIGHT. Leader Liz Choules,
Sat - Sun 363-9966. Meet at the Terraces at 10 am.

SEPTEMBER 21 GRANDEUR PEAK. El 8,299. Rating 4.5. Leader Phil Berger,
Saturday 278-7412. Meet at the Movie at 9 am.

SEPTEMBER 21 LAKE MARY. El 9,560. Rating 1.5. Leader Bill Rosqvist, 295-0458.
Saturday Meet at WMC lodge at 9 am.

SEPTEMBER 21 WOOD-CUTTING DAY AT THE LODGE, starting at 8:30 am. We plan
Saturday to seal the exterior of the lodge as well as cut and stack wood
this year, so we'll need lots of help. Bring your old paint
brushes, chain saw and pick-up truck. Free lunch and drinks
furnished. Everyone welcome, we will try to establish some
kid-watchers. For details on the evening meal, see below.
Call Phil Nelson, 581-9205 if you need information.

SEPTEMBER 21 DUTCH OVEN STEW, following wood-cutting. If you want to eat
Saturday supper after working, call Ken McCarty, 466-3297, to arrange
your contribution. Lodge open for overnite, of course.

SEPTEMBER 22 TIMPANOGOS. El 11,750. Rating 10.5. Leader Fred Bruenger,
Sunday 485-1423. Meet at the Alpine exit of I-15 south at 7 am.

SEPTEMBER 22 DAYS FORK. Rating 4.5. Leader Mike Hendrickson, 467-4117.
Sunday Meet at the mouth of Big Cottonwood Canyon at 9 am.

SEPTEMBER 22 SUNDIAL EXPERIENCE CLIMB. The leader Larry Swanson promises an
Sunday exciting and instructive day on this challenging peak. Bring
your climbing gear, especially a hardhat, and meet at the mouth
of Big Cottonwood at 9 am. For more information or questions
about equipment call Larry at 278-3269.

SEPTEMBER 25 ADVANCED CLIMBING SEMINAR. An evening introductory session.
Wednesday See the Mountaineering Ramblings for details.

SEPTEMBER 26 EVENING CLIMBING AT STORM MOUNTAIN
Thursday

SEPTEMBER 28 THAYNE PEAK. El 8,656. Rating 5.0. Leader Elmer Boyd,
Saturday 583-2292. Meet at the Movie at 9 am.

SEPTEMBER 29 Sunday	RED PINE - PFEIFFERHORN. El 11,326. Rating 10.0. Leader Gale Dick, 359-5764. Meet at the mouth of Little Cottonwood Canyon at 8 am.
SEPTEMBER 29 Sunday	ADVANCED CLIMBING SEMINAR. See Mountaineering Ramblings.
OCTOBER 3 Thursday	EVENING CLIMBING AT STORM MOUNTAIN
OCTOBER 5 Saturday	MT AIRE. El 8,620. Rating 3.0. Leader Bill Rosqvist, 295-0458. Meet at the Movie at 10 am.
OCTOBER 5 Saturday	ANNUAL WESTERN PARTY. Mosey on up the canyon, check your guns at the door, and come on in for some western hospitality. We meet after sundown (7:30 pm) at the WMC lodge, for a night of high stakes gambling, good grub, and some of that red-eye (that means drinks, pardner!). The cost is \$2.50 plus very reasonable drinks. Wear your western duds. The lodge will be open overnight so bring the usual preparations for the following morning. For information and reservations call Katie Hedberg, home 262-5259 or work 268-7295 or Karen Weatherbee, home 272-2624 or work 325-5165.
OCTOBER 6 Sunday	NORTH FACE OLYMPUS. El 8,959. Rating 8.0. Leader Harold Goodro, 277-1247. Meet at the Movie at 8 am.
OCTOBER 6 Sunday	ADVANCED CLIMBING SEMINAR
OCTOBER 10 Thursday	EVENING CLIMBING AT STORM MOUNTAIN
OCTOBER 12-14 Sat - Mon	CANYONLANDS. No leader; call Bill Rosqvist for information, 295-0458.
OCTOBER 12-14 Sat - Mon	ZION NARROWS. Leader Don Colman.
OCTOBER 12 Saturday	BIG BEACON
OCTOBER 13 Sunday	GRANDEUR PEAK
OCTOBER 13 Sunday	ADVANCED CLIMBING SEMINAR
OCTOBER 19 Saturday	MOUNTAINEERS KEGGER AT LODGE. See Mountaineering Ramblings and next months Rambler.

THE PRESIDENT'S COLUMN

by Dale Green

The Rambler Has Problems

The cost of printing and distributing the Rambler now exceeds our income from dues. As of the August 7th Board meeting, only \$400 remained in our General Fund account. Last year, our average monthly Rambler cost was \$300.

Principly due to increased activities, the Rambler has expanded in size to the point where it is difficult to find an editor to do the job (we now have two to alternate the burden). At the same time, inflation overwhelmed us with the price of paper skyrocketing. Obvious solutions are to reduce the size and increase the dues, which I'm sure we will but that must wait until next year. In the meantime, we will transfer (borrow) money from other accounts to pay for the Rambler and take the following remedial measures:

I. The Board has directed the Editors to dractically reduce the Rambler's size. All persons writing schedules are requested to be terse - include only necessary information rather than make each announcement an advertisement. Trip write-ups will be edited. With some exceptions, only cover pictures will be printed. Five page conservation articles and boat trip reports are a thing of the past. If your three page article is edited to 3 paragraphs or eliminated, please complain to the Board of Directors, not the editors.

II. The membership, and especially trip leaders, are requested to encourage prospective members who are attending trips as guests to submit their applications after two events. We currently distribute about 150 free Ramblers each month! Yet we only receive an average of 5 applications per month. Many recipients are actually participating in trip after trip after trip but never bother to join. I emphasize that we are not having or encouraging a membership drive. All we want to do is bring these people, who enjoy virtually full membership privileges but are costing us money, into the fold. That's only fair.

III. Ramblers will no longer be available for free from Timberline Sports. They cost us 50¢ so that price will be charged to non-members. Upon request, free Ramblers will still be sent to prospective members for 2 months by the Membership Director. Yearly subscriptions for \$5.00 are available.

IV. In addition to a general dues raise next year, several Life Members have expressed a willingness to pay the subscription price to receive the Rambler. The exact action will depend on a Bylaw change by the Board.



National Whitewater Training Camp

-- An Afterthought

by Michael W. Mutek

The growth of whitewater kayaking is evidenced by the initiation this summer of the National Whitewater Training Camp. The training camp ran from July 1st through 12th and was followed by the National Kayak Championships. The intended

goal was the best possible training of America's racers for the National Championships, but the purpose went far beyond the championships.. Listening to the Olympic coaches talk of the "old days" when America's racers could almost fill the fingers of two hands was interesting, especially when one observed the four slalom training courses the 100+ racers from all over the U.S. were putting to use. The result, obviously, will benefit both recreational boating and the quality of American kayak competition. By assembling the best in coaching and coaching techniques, extensively utilizing videotape, and developing individual training routines we can look forward to an internationally competitive American team.

Kayaking has grown tremendously in America, but until the formation of the National Training Camp there was no serious attempt at organizing the training of boaters and coaches. It is hoped that the Training Camp will become permanent and will be open to clubs who wish to use the fantastic water of the Arkansas River to teach or further develop the whitewater ability of members. The proximity of Buena Vista, Colorado, the site of the camp, to Salt Lake City, would enable WMC club members, or the newly formed, Salt Lake based, Western Whitewater Association, to sign up and utilize the camp in the future. It is important that in Salt Lake, like other areas of the country, a strong nucleus of well-trained, knowledgeable kayakers, who can be called upon to teach the sport, be formed because of the large, growing number of potential and beginning kayakers who require attention and training. I fear the coming season will find major sporting goods stores jumping on the bandwagon and selling kayaks without being able to offer advice and training. This is foolhardy and analogous to selling a person a rope and telling him to climb a mountain because it is fun. The need for organization of boaters in order to provide training was a reason for the formation of the Western Whitewater Association. Clubs like the WMC and WWA need to recognize the need for training of interested individuals through clinics and training sessions. Without such training the development of the sport will be hindered and many individuals will not be afforded the opportunity to experience what has made many of us whitewater freaks.

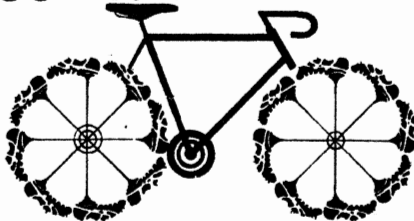
★ 10 Speeds ★ Accessories ★ Repairs

★ BENOTTO ★ FOLLIS ★ ATALA

★ Running and Jogging Shoes ★ Track Spikes

BIKES AND SPIKES

5156 So. State 268-1011



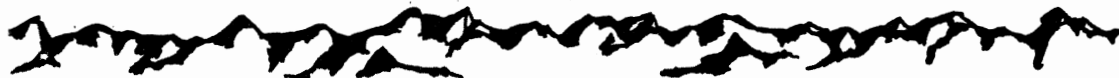
Mountaineering Ramblings

by Paul Horton

The July 24th trip to the Wind Rivers was a great success. After the long hike in, base camp was set up in a spectacular lake-filled valley surrounded with peaks. For the next several days people split up into various parties and climbed the following peaks: Mt Geikie, Ambush Pk, Pt 12,187, Raid Pk, Mt Bonneville, Tower Pk, Mt Hooker, Pyramid Pk, and a number of lesser summits. Two unexpected pleasures were the perfect weather and the never-ending supplies of fresh fish caught by Lyman. Participants were Lyman Lewis, Ray Daurelle, Yukio Kachi, Larry Perkins, Dwight NicholSEN, John Gottman and Paul Horton.

During the early fall the club will have an Advanced Climbing Seminar. This is designed only for climbers of some experience who wish to learn to lead. Three climbing days are scheduled, plus an evening session. The class will be limited so registration is mandatory. Register with the leader, Dave Smith, 466-6714 or 272-2354, by Sept 24.

On October 19th the climbing faction of the WMC is hosting a party at the lodge. The basic idea is to have the year's cheapest drunk, but we may also have a used equipment sale and show some slides. Neither the slides nor the gear nor the people need to have anything to do with climbing, everyone is welcome. See the next Rambler for more details.



when you buy or sell

FIRST QUALITY SERVICE

residential and

income

properties

SAM ALLAN'S NEW

BLUE RIBBON REALTY

PHONE 486-6834



lone peak

June 9

by Lew Hitchner

Due to a misprinted phone number and the lack of a meeting time in the Rambler, the turnout for this hike was rather low -- 6 hardy souls. We started about 6:45 at the (expletive deleted) Movie road. What a way to get your heartbeat going fast early in the morning!

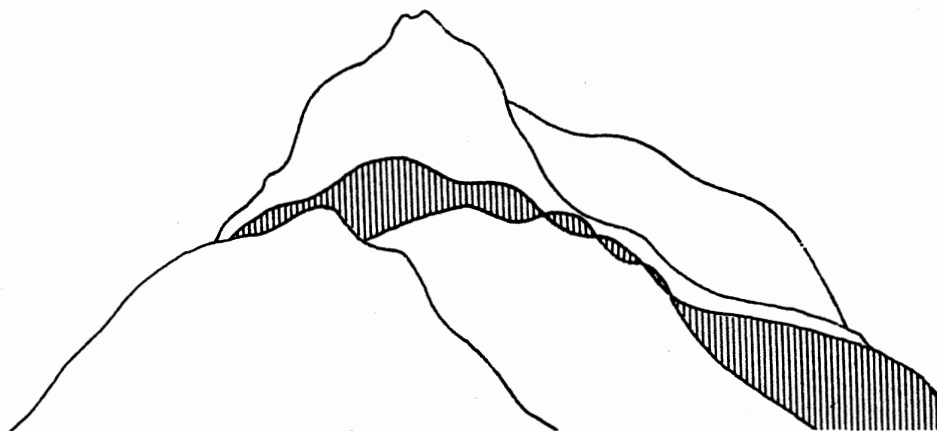
The hike to the summit took about 5½ hours. After a leisurely lunch hour we descended and were back to our cars by 4:30. The weather was beautiful -- plentiful sunshine, clear skies, and no wind, even on the summit.

It's unfortunate that more people weren't on this hike. The view of the fantastic cirque and 800 ft rock face below the summit as well as the views of the Salt Lake Valley and surrounding peaks are well worth the climb to the summit, especially when everything had a clean white coating from the snow storm a few days before.

Participants: Fred Bruenger, leader, Eveline Bruenger, Jon Olson, Bruce Lessig, Paul Horton, Lew Hitchner.



When the fences and trees
in your backyard just aren't enough, look for more
and find the mountains.



Climbing and Backpacking Clinics Available

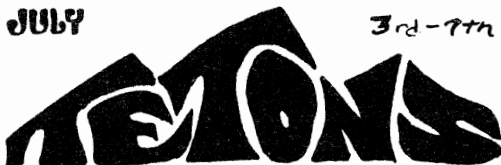
Timberline Sports 3155 HIGHLAND DRIVE SALT LAKE CITY, UTAH 466-2101

STORE HOURS M-W-F 10:00 A.M. 9:00 P.M.

T-TH. 10:00 A.M. 6:00 P.M. SAT. 9:00 A.M. 6:00 P.M.

JULY

3rd-7th



by Suzanne Key

Mountaineering High Camp

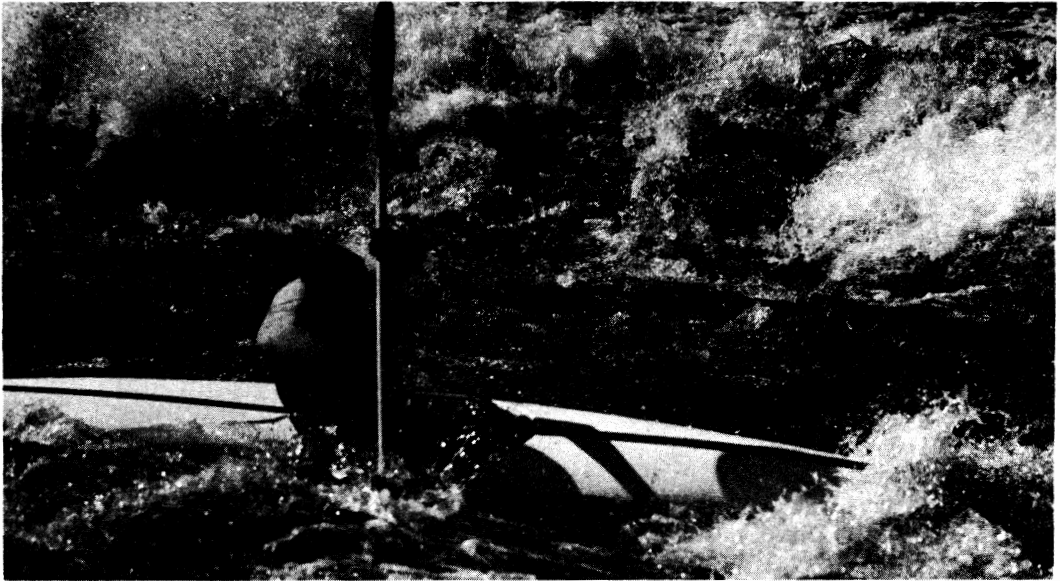
For many people the 4th of July was a day for wieners, saluting the flag, and shooting off firecrackers, but for 15 members of the WMC club (Lyman Lewis, Jim Key, Audrey Stevens, Paul Horton, Charlie French, Larry Perkins, Rugged Mountaineering Leader John Gottman, John Riley, Bruce Lessig, Kermit & Marilyn Earle, Dave & Barb Smith, Sam Allan and Suzanne Key), it was a gloriously hot day for packing into the meadows of Garnett Canyon in the Tetons for an extended weekend of hiking and climbing. Paul Horton and Dave Smith went up to the lower saddle between the Middle and the Grand that first evening in preparation for the climb Friday on the Underhill Ridge of the Grand.



On Friday, John G, John R and Larry P did the traverse from the Cloudvail Dome to the South Teton. Midafternoon found Audrey, Lyman, Sam, Charlie, Jim, Suzanne, Marilyn and Kermit hiking to the lower saddle to visit the upper camp and for the view. A passing rainstorm threatened to send us all glissading back to the base camp. Suzanne did her solo descent immediately, not caring to flirt with Mother Nature any longer. Marilyn and Kermit returned soon after having scrambled higher for a better view. After a windy night and little sleep on the saddle, the rest of the group climbed the Grand via the Owen Spalding route on Saturday.

By Saturday those of us still in base camp were beginning to lose our youthful energy. However, we forged onward and upward to the saddle between the South and the Middle. John and Larry made a rather showy but scary ascent of a southeast couloir on the Middle Teton while John R, Marilyn, Kermit, Barbara and I lolled amidst the wildflowers of the upper meadows contemplating the awesome beauty of the Alaska Basin below. Marilyn and Kermit went on to do the South. The Grand climbers began straggling back to camp Saturday afternoon. By evening it was a pretty quiet reflective group wanting one thing only -- a good night's sleep. Paul and Dave went down to Jackson for R & R. By 2 pm Sunday everybody was down except Bruce Lessig who was seriously ill and required a ranger rescue. Audrey, John and Suzanne made a minor detour to Bradley Lake.

It's hard to say what was more enjoyable on the trip - the physical feats of the day or the social gatherings in the evening. What with Audrey's baby bottle filled with special brew and an unlimited supply of Wylers, we always went to our sleeping bags in a warm glow. I want to thank Audrey for her inspiration and John Gottman for his sense of humor, and special thanks go to Dave and Paul for taking people up the Grand and to Lyman for waiting with Bruce for the rescue.



WHITEWATER!!

FIND OUT WHAT IT'S ALL ABOUT AT

intermountain whitewater

KAYAKS, CANOES, RAFTS, AND EXPERT RIVER RUNNING ADVICE

130 EAST 33rd SOUTH

467-1334

HOURS: NOON TO 6 PM
MONDAY THROUGH FRIDAY

SAT. & SUN. CLOSED FOR BOATING

HELP SAVE OUR RIVERS

The federal Water Pollution Control Act makes it illegal for anyone to pollute our rivers, streams and lakes. This protection applies to all of our streams, not just to the high mountain streams or large rivers. The mountain streams often flow through our cities and towns on their way to the Great Salt Lake or the Jordan River. These streams are subject to pollution from agricultural or recreational sources before they reach the city, and by urban and industrial pollution within the cities. Rivers such as the Provo and Jordan, Cottonwood Creek, City Creek, the Weber and Bear rivers and others should be assets to our communities. Why should we have to drive up the canyon to have a picnic or to fish?

We have streams in the city and we have the tools we need to protect these streams.

Section 301(a) of the federal Water Pollution Control Act reads as follows:

"Except as in compliance with . . . this Act, the discharge of any pollutant by any person shall be unlawful."

No person (or corporation) can legally discharge dirty, smelly or unhealthy water. The discharge of any visible amount of oil is unlawful.

The law has teeth in it. It can be used to clean up polluted streams. The regulatory agencies are not "police agencies". They do not have sufficient personnel to patrol our rivers and streams against polluters. The Environmental Protection Agency has primary responsibility under the Act for preventing water pollution in Utah. However, the EPA only has one person stationed in Utah. The EPA is assisted by the Utah Division of Environmental Health but it too is understaffed.

If we want clean water we will have to help enforce the law.

Report water pollution promptly. If possible, take a picture of the source of the pollution; but by all means, notify one or both of the following agencies:

U.S. Environmental Protection Agency
1860 Lincoln Street
Denver, Colorado 80203

Telephone: Oil Spills
303-837-3880
Other Water Pollution
303-837-3874

Utah Division of Environmental Health
44 Medical Drive
Salt Lake City, Utah 84113

Telephone: 328-6146

Carry the attached card in your wallet, purse or tackle box.

HELP SAVE OUR RIVERS - JOIN THE SAVE OUR RIVERS COMMITTEE

For more information, contact:

Save Our Rivers Committee
1275 Wilmington Avenue
Salt Lake City, Utah 84106

(Your name)

(Address)

(Telephone)

flagstaff mountain

August 10

by Kim May

We began at the Alta parking lot on a comfortably cool morning, everyone enthusiastic and ready to go. Dave Boyd led the 13 hikers as we started up a pathless mountainside covered with beautiful wildflowers of many varieties.

Although this hike was rated a mere 4.0 a few of us stragglers believed it must have been at least a 6.0. Two of the younger hikers made it long before most and still had more than enough energy to come back and walk a ways with the last of us.

Participating hikers included: Dave Boyd, Jim Wood, Cherie Hale, Gail Giles, Kim May, Elay Ordakowski, Steve Bocek, Dave Wood and Arnold Sandbeck.

~~~~~

## *Lake Blanche — Sundial*

July 24

by H.R. Macpherson

Even with a muggy-wet start at the "S" curve picnic area the day turned into a beautiful one for hiking -- a few puffy white cumulus clouds and a deep blue sky. It was a hot-sweaty climb to Lake Blanche where we reassembled for the assault up Sundial. The assemblage at Lake Blanche included our fearless leader Fran Flowers, Judy Davis, Janette Rouge, John Riley, "Mac" Macpherson, Doug Willett, Sophia

Simmons, Rob & Bob Dunaway, Ruth Herson, Elmer Boyd and Milt Hollander who joined us at Lake Blanche and left us at Sundial to return by way of Broads Fork.

All of us made an attempt at climbing Sundial, most of us making the ridge to the summit and the majority making the summit. The hanging valley at the base of the ridge to Sundial was lush with green grasses, many alpine type flowers, cool good-tasting stream with waterfalls and nearly void of snow. There were some stragglers on the way down and a good time was had by all.



## TRAIL GUIDES

---

Wasatch Trails \$1.50

HIGH UINTA TRAILS \$2.95

Cache Trails \$1.50

postpaid from:

**Wasatch Publishers, Inc.**

4647 Idlewild Rd.

Salt Lake City, Ut. 84117

A P P L I C A T I O N   F O R   M E M B E R S H I P

WASATCH MOUNTAIN CLUB  
3155 Highland Drive  
Salt Lake City, Utah 84106

NAME (Print) \_\_\_\_\_ Telephone \_\_\_\_\_

Name of spouse (only if spouse wants membership also) \_\_\_\_\_

Address \_\_\_\_\_ ZIP \_\_\_\_\_

Occupation (Optional) \_\_\_\_\_

I hereby apply for membership in the Wasatch Mountain Club and enclose \$ \_\_\_\_\_ as my annual membership dues for the year \_\_\_\_\_, \$ \_\_\_\_\_ of which is for a subscription to the Rambler for the year and \$4.00 entrance fee. (From January to August, dues are \$6.00 of which \$5.00 are for a Rambler subscription - Spouse dues (non-subscribing) are \$3.00 - plus \$4.00 entrance fee. From September to December, the dues are \$3.00, of which \$2.50 are for a Rambler subscription -- Spouse dues (non-subscribing) are \$1.50 - plus \$4.00 entrance fee.) I (do) (do not) desire to receive the Rambler.

I have attended two Club activities in the past 12 months as required for membership such as hikes, ski tours, camping trips, rock-hound trips or work parties and have been recommended by two trip leaders who are Club members. Social events such as lodge parties, winter socials, etc. are not activities qualifying for membership. I agree to abide by all the rules and regulations of the Club as specified in the Constitution and Bylaws as determined by the Board of Directors.

I am specifically interested in the items checked below:

Hiking \_\_\_\_\_ Ski Touring \_\_\_\_\_ Boating \_\_\_\_\_ Mountaineering \_\_\_\_\_ Caving \_\_\_\_\_

Cycling \_\_\_\_\_ Conservation \_\_\_\_\_ Writing and Editing \_\_\_\_\_ Organizing social

activities \_\_\_\_\_ Lodge Work \_\_\_\_\_ Photography \_\_\_\_\_ Other \_\_\_\_\_

CLUB ACTIVITIES ATTENDED:

1. \_\_\_\_\_ Date \_\_\_\_\_ Signature of recommending Trip Leader \_\_\_\_\_

2. \_\_\_\_\_ Date \_\_\_\_\_ Trip Leader \_\_\_\_\_

(Note: The signature of a Director may be substituted for one Trip Leader.)

\_\_\_\_\_  
Signature of Applicant

# white pine lake

July 13

by Kathy Wallentine

A large group of mountain clubbers met at the mouth of Little Cottonwood Canyon for a hike scheduled for Red Baldy and White Pine Lake (for the less adventuresome). The group divided into two sections, with one group doing a ridge run from Alta to White Pine and the other small contingent consisting of leader Jackie Thomas, Ray Martin and Kathy Wallentine headed for White Pine Lake.

It was a beautiful morning, though some rain was predicted for later in the day. The three of us started off at

a quick pace over the rustic bridge and up the road that was muddy and severely gutted with tire tracks in spots. We followed the road past the snow slide area and enjoyed the lush and beautiful flowers that lined the road, monkey flowers, red and yellow geraniums, orchids, pedicularis and many others.

We made one false start looking for the trail that led directly to the lake and returned to the jeep road. A little further up we came to another side road that we followed down through a flowered area and up into the trees. True to the leader's prophesy, there was the trail that wound into the trees, over some rocks, through more flower gardens and to the dam and white Pine Lake. We visited at the lake, which was cool and placid, and made record time getting back.

## Starlight & Storm

Mountain Boot Repair -- Mountaineering Equipment



### KARRIMAR SURVIVAL SACKS

A durable bag made of orange 5 mil plastic 35" x 76" with one sealed end. Provides excellent protection from wind, rain and cold in the event of sudden storm or planned or unplanned bivouac. Wt.: 7 oz. Price: \$2.00

Hours: Mon.-Thurs. 9-6  
Friday 9-9  
Saturday 9-2

3288 South 13th East

466-6714

**WASATCH MOUNTAIN CLUB, INC.**

3155 Highland Drive/Salt Lake City/Utah 84106

Vol. 51, Issue 9 (1974)

Application to mail  
at 2nd class postage  
rate is pending at  
Salt Lake City, Utah.

RE

**BOARD OF DIRECTORS**

|                  |                |          |
|------------------|----------------|----------|
| DALE GREEN       | PRESIDENT      | 277-6417 |
| BETTY HENDRICKS  | SECRETARY      | 487-1929 |
| MEL DAVIS        | TREASURER      | 278-3174 |
| KEN McCARTY      | BOATING        | 466-3297 |
| MIKE OMANA       | CONSERVATION   | 484-4686 |
| KAREN WEATHERBEE | ENTERTAINMENT  | 272-2624 |
| BILL ROSQVIST    | HIKING         | 295-0458 |
| J DEWELL         | KAYAKING       | 295-2754 |
| PHIL NELSON      | LODGE          | 581-9205 |
| MARLENE AUSTIN   | MEMBERSHIP     | 355-4726 |
| PAUL HORTON      | MOUNTAINEERING | 328-9486 |
| MARY WELCH       | PUBLICATIONS   | 262-7732 |
| DWIGHT NICHOLSON | SKI TOURING    | 359-6178 |