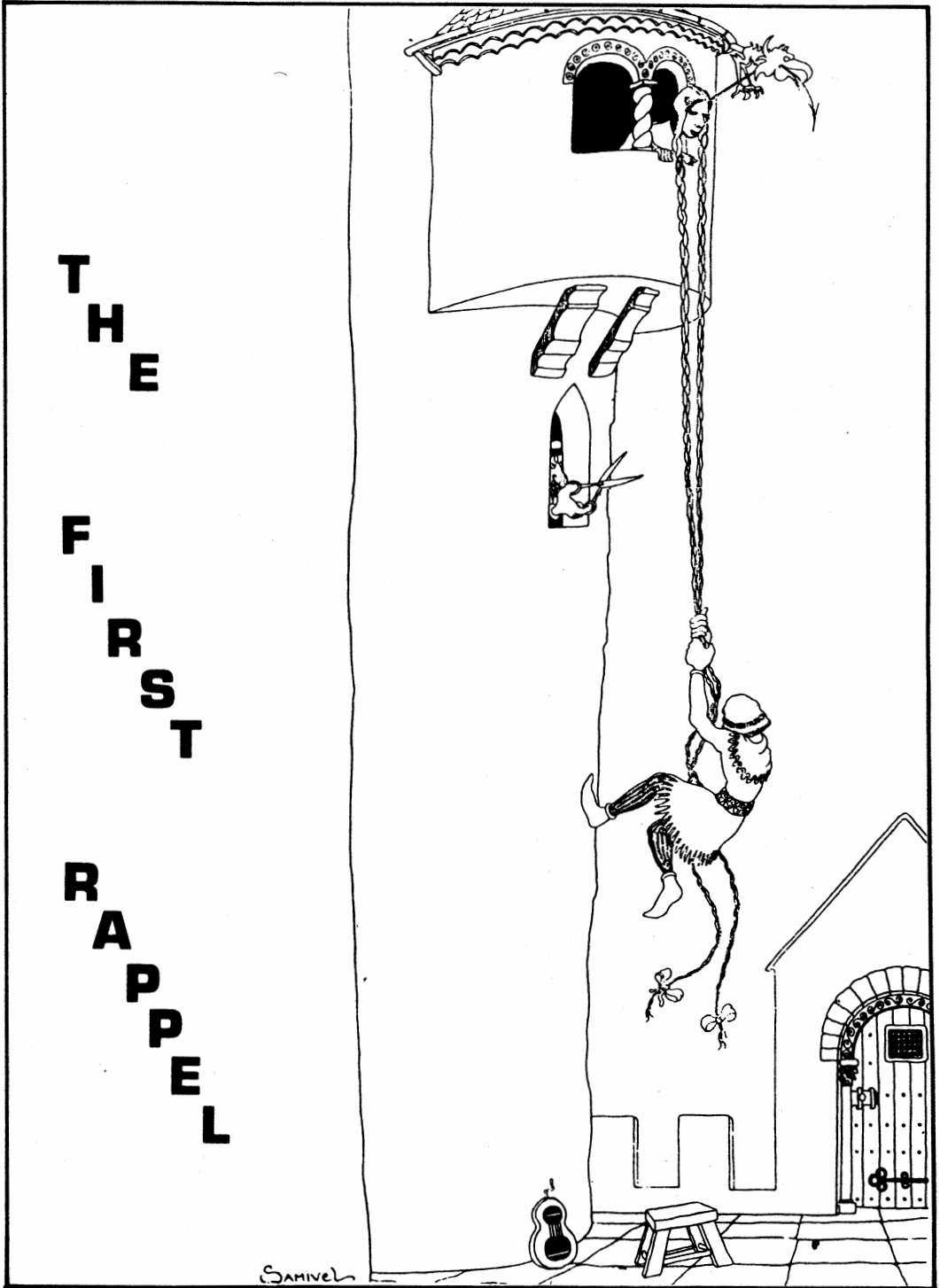


The Rambler

Vol. 52, Issue 8 (1975)

THE FIRST RAPPEL



Official publication of THE WASATCH MOUNTAIN CLUB Salt Lake City, Utah

news and notices

Cover: excerpt from "Les
Plaisirs de l'Alpinisme"
by Samivel. Thanks to
Gale and Ann Dick.

Will whoever left a blue
quilted jacket in Audrey
Stevens' Travelall during
a ski tour please claim it?
Phone (1) 649-9884.

thanks

- ...to George and Georgia Randall
for mailing the July RAMBLER,
and for going to a lot of extra
trouble to get the Membership
List out.
- ...to Adrian Stevens and Mike
Treshow for headings, typing
and editing help.

THE RAMBLER is published monthly
by the Wasatch Mountain Club, Inc.,
3155 Highland Drive, Salt Lake City,
Utah 84106. Subscription rates are
\$5.00 a year. All correspondence
regarding changes of address, mail-
ing, etc. may be directed to the
Membership Director at the address
above. Second Class Postage paid at
Salt Lake City, Utah.

rambler

Deadline

...for SEPTEMBER is August 15,
Friday. Please have your
articles and schedules typed
and mailed to:

ATTENTION: RAMBLER EDITOR
Wasatch Mountain Club
3155 Highland Drive
Salt Lake City, Utah 84106

The Wasatch Mountain Club is governed by a Board of Directors - 13 representatives elected by the membership. Through the courtesy of Timberline Sports, our mail is sent to their address, 3155 Highland Drive, for collection only. The Club's telephone is located at O'Dell's Shoe Repair Shop, 425 South 8th West. This phone is maintained as an answering service only by Life Members 'Pete' (O'Dell) Peterson and wife 'Pinky'. They take time out from their work to answer the phone and relay incoming messages to the proper Director. The Petersons do not hold any office, or attend Board meetings, or are they informed by the Board of official actions. If a trip leader cannot be contacted or is not specified, call the Director of that department for information. The Board strongly desires to hear comments, suggestions, inquiries, and criticisms concerning the operation of your Club. Please feel free to phone any Director or write to the President. Names will be withheld upon request, but anonymous letters will be disregarded.

Mountain Club business is conducted only on the first and third Wednesdays of each month. At that time, and only at that time, is the mail opened, new membership applications voted on, dues payments recorded, address changes made, and all other business requiring board action conducted. All board members cannot attend all board meetings and although an effort is made to fill in during a member's absence, some business is held for action until the next meeting.

CLUB ACTIVITIES for AUGUST '75

REGISTRATION INFORMATION: Registration is generally not required for members participating in easy or intermediate hiking (rating below 7.0). Unless specifically stated, advanced hikes (rating above 7.0) require registration with the leader. Adequate equipment is an absolute must. You cannot participate in these events if you have not shown your ability on other hiking activities and if you do not have adequate

and well broken in boots with good Vibram type soles and suitable protective clothing. Special equipment like an ice axe etc. may also be specified and you are required to be able to handle such equipment. Remember that these restrictions are set for your own safety and that of your fellow members. For rules regarding participation of children, consult the May Rambler 1974.

AUGUST 7
Thursday

EVENING CLIMBING AT STORM MOUNTAIN.

AUGUST 7
Thursday

"KNOW THE WASATCH TRAILS" Thursday evening hike. Bowman Fork. Meet at 7:00 p.m. in the Upper Terraces Picnic Area. Drive 4.6 miles up Millcreek Canyon (3800 South), turn right at the Terraces sign and up the road for about 1/4 mile. (Because of vandalism, the Forest Service sometimes closes this small road. Park alongside the railroad if so.) Leader: Dale Green, 277-6417.

AUGUST 8-19
Fri.-Tues.
week

MIDDLE FORK SALMON KAYAK TOUR. Meet at Dagger Falls Friday night, August 8th, shuttle Saturday, and put in Sunday August 10th. We will spend 10 days on one of the finest rivers in North America. Confirm your intentions early, or run your own shuttle. Jim Byrne, leader; 582-5631.

AUGUST 8-10
Fri.-Sun.

LODGE OPEN. Friday night's hosts Yukio Kachi and family (466-8418) will have the door unlocked for you. You will need your own bedding, food, beverage, pots, plates and utensils to stay overnight. For potluck supper and drinking party Saturday night call host Annie Greensprings McDonald (277-5433) re what to bring. No children after noon Saturday.

AUGUST 9-10
Sat.-Sun.

THAYNE CANYON TO NEFF CANYON OVERNIGHTER. \$1.8,000 rating 8.0 This should prove to be a fun trip, with the campsite possibly on the ridge area between the two canyons. Meet at The Movie (39th St. and Wasatch Blvd.) at 12:00 p.m. Registration with the leader by Wednesday the 6th is required. Leader: Bob Weatherbee, 277-5510.

- AUGUST 9
Saturday
BRIGHTON RIDGE RUN. El. 10,795 Rating 8.0 This peak-bagging trip starts as Snake Creek Pass and then runs the ridge to Pioneer Peak, Sunset Peak, Mt. Tuscarora, Mt. Wolverine and finally Mt. Millicent. Meet at the mouth of Big Cottonwood Canyon at 8:00 a.m. Leader: Ross Pearson, 486-0455.
- AUGUST 9
Saturday
MT. MAJESTIC. El. 10,720 Rating 4.5 This is the other peak in the Brighton area and provides a little better and easier going. Meet at the mouth of Big Cottonwood Canyon at 9:00 a.m. Leader: Jackie Thomas, 487-9340.
- AUGUST 10
Sunday
MT. WOLVERINE AND TUSCARORA. El. 10,700 Rating 6.0 If you like a hike involving beautiful lakes on the way up and on the way down and in between, nice peaks and beautiful scenery, then this is the hike for you. Meet at the mouth of Big Cottonwood at 7:30 a.m. Leader: Marty Snyder, 262-4695.
- AUGUST 10
Sunday
BOX ELDER PEAK. El. 11,101 Rating 9.0 This peak lies on the Wasatch Front between Lone Peak on the north and Timpanogos on the south. The route up will probably be from the east side and promises to be interesting. Meet at the Prudential Plaza parking lot (33rd South and State) at 7:30 a.m. Leader: Dave Hanscom, 487-6065.
- AUGUST 14
Thursday
EVENING CLIMBING AT STORM MOUNTAIN.
- AUGUST 14
Thursday
"KNOW THE WASATCH TRAILS" Thursday evening hike. White Pine - Red Pine Canyons. Meet at the "Y" junction at the mouth of Little Cottonwood at 7:00 p.m. SHARP. Leader: Dale Green, 277-6417.
- AUGUST 16-17
Sat.-Sun.
FAMILY RIVER TRIP. At this point it will be Fun on the Snake, but exact location will depend on water level, etc. and we don't know those details yet. Register by sending a \$10 deposit to Rick or Susie Williams, 185 Paradise Road, Summit Park, Park City, Utah 84060. Phone 1-649-9063.
- AUGUST 16
Saturday
HAYDEN PEAK. El. 12,475 Rating 6.0 This high peak features some interesting hiking, including some steep scree slopes and mild exposure. The view and the nice ride make it very worthwhile. Meet at the K-Mart parking lot by the Regency Theatre at 6:30 a.m. Leader: Charlie Keller, 467-3960.
- AUGUST 16
Saturday
SUGARLOAF FROM ALBION BASIN. El. 11,051 Rating 3.5 This hike starts in Albion Basin and travels through the wildflowers, past the ski lift to the peak. Meet at the mouth of Little Cottonwood at 9:00 a.m. Leader: Stewart Ogden, 359-2221.
- AUGUST 16
Saturday
NORTH PEAK OF THUNDER MTN. FROM SAM THOMAS GULCH. El. 11,150 Rating 10.0 The route will start up the Gulch, which is very steep and gains altitude quickly, then to the ridge, which is very exposed in places and features some good scrambling to the

peak. This hike is for very experienced hikers only! Register with the leader for details, meeting place and time. Leader: Sam Allan, 561-1136.

- AUGUST 17
Sunday
DEVIL'S CASTLE. El. 10,920 Rating 3.5 This hike has a lot of exposure so be prepared! The route is up Albion Basin to the ridge and then to the peak. Meet at the mouth of Little Cottonwood at 8:30 a.m. Leader: John Riley, 485-2567.
- AUGUST 21
Thursday
EVENING CLIMBING AT STORM MOUNTAIN.
- AUGUST 21
Thursday
"KNOW THE WASATCH TRAILS" Thursday evening hike. Elbow Fork to Terraces. Meet at 7:00 p.m. at the Terraces Picnic Area. See August 7 for directions. Leader: Dale Green, 277-6417.
- AUGUST 22
Friday
BUTTERFIELD PEAK MOONLIGHT HIKE. El. 9,303 Rating 3.0 An easy hike which starts on the pass between Salt Lake and Tooele Valleys and winds its way up to the peak. Bring a jacket and flashlight. Meet at the intersection of 48th South and Redwood Rd. at 7:00 p.m. Leader: Audrey Stevens, (1) 649-9884.
- AUGUST 22-24
Fri.-Sun.
OPEN LODGE FAMILY WEEKEND. Last chance for school-agers to enjoy their freedom. Bring your sleeping bag and gear to cook, eat, and keep off the night chill. Jim McCullough family hosts. Get-acquainted potluck Friday night - ask Jackie (466-4061) for kind of dish.
- AUGUST 23-24
Sat.-Sun.
ALPINE CANYON KAYAK TOUR. Call Dan Thomas for details, 561-8606.
- AUGUST 23
Saturday
RED PINE LAKE. El. 9,600 Rating 6.0 A beautiful excursion into the proposed Lone Peak Wilderness Area. Meet at the mouth of Little Cottonwood at 7:00 a.m. Leader: Bill Rosqvist, 295-0458.
- AUGUST 23
Saturday
DROMEDARY PEAK. El. 11,107 Rating 10.5 Dromedary sits on the ridge above Broads Fork. The route will probably be up Mill B past Lake Blanche and then either down Mill B or Broads Fork. This hike has exposure and involves some scrambling, but is well worth the effort. Meet at the mouth of Big Cottonwood at 8:00 a.m. Leader: John Gottman, 359-4693.
- AUGUST 24
Sunday
MULE HOLLOW WALL EXPERIENCE CLIMB. Be prepared for F5 and F6, nailing, and rappels on this rather vertical 500-ft wall. Good climbing and plenty of rope leaders are important on this event. Call the Mountaineering Director for details and to register.
- AUGUST 24
Sunday
MOUNT NEBO. El. 11,928 Rating 9.0 Mount Nebo is the highest peak in the Wasatch Range and provides an excellent view from the summit. This hike calls for about an hour's drive from Salt Lake and should provide a very good day of hiking. Meet at the Prudential Parking Lot (3300 So. and State St.) at 6:00 a.m. Leader: Caine Alder, 487-3097.

- AUGUST 24
Sunday
MAYBIRD LAKES. El. 9,600 Rating 5.0 The Maybird Lakes sit up in Maybird Fork in a beautiful alpine setting. The hike starts on the White Pine trail, switches to the Red Pine trail and then over the ridge to Maybird. Meet at the mouth of Little Cottonwood at 9:00 a.m. Leader: Mike Hendrickson, 484-2640.
- AUGUST 23-24
Sat.-Sun.
KINGS PEAK OVERNIGHTER. El. 13,528 The route up Utah's highest peak will probably be from the north slope of the Uintas. This peak calls for strong legs (30-mile round trip) and strong lungs for the high elevation. Hikers contemplating this great trip (either overnight or one day) should contact the leader for details, meeting place and time. Leader: Sam Allan, 561-1136.
- AUGUST 28
Thursday
EVENING CLIMBING AT STORM MOUNTAIN. Take your chances on beer being available.
- AUGUST 28
Thursday
"KNOW THE WASATCH TRAILS" Thursday evening hike. Stairs Gulch. Meet at 7:00 p.m. in the Storm Mountain Reservoir parking lot. Drive 3.0 miles up Big Cottonwood Canyon from Wasatch Blvd. through the rock gap and turn left on the dirt road just after the bridge. Leader: Dale Green, 277-6417.
- AUG. 29-SEPT. 1
Fri.-Mon.
MOUNTAINEERING HIGH CAMP, Cirque of the Towers in the Wind River Range. We will again take our chances with rain and snow in this beautiful cirque. The approach is nine miles but the trail does not gain much vertical. Moderate climbs on Pengora and Block Tower are possible as well as numerous more difficult routes. Hikers are welcome, with Lizard Head and Mitchell as possible objectives. Fishing in Lonesome Lake is generally good. Call the leader, Jim Key at 467-1337 for details and to register.
- AUG. 30-SEPT. 1
Sat.-Mon.
ALPINE OR WESTWATER CANYON KAYAK TRIP. Call Dan Thomas for details, 561-8606.
- AUG. 30-SEPT. 2
Sat.-Mon.
HELLS CANYON OF THE SNAKE RIVER. Advanced. This river trip was last done in 1970, so it should be new to many of the current river-runners. There are two rough rapids and a number of lesser challenges. The gorge is the deepest in the U.S. Stew Harvey is the leader, but he will be out of town during much of August so please send your \$10 reservation to Mike Treshow, 1798 Millbrook Rd., SLC 84106, phone 467-1022. Stew's phone is 484-1345.
- AUG. 30-SEPT. 1
Sat.-Mon.
HIGH UINTAS BACKPACK. The destination has not been set as of this time. Call the leader for details, and meeting place. Leader: Mike Hendrickson, home 484-2640 or work, 521-8132 ext. 66.
- AUGUST 30
Saturday
KESSLER PEAK. El. 10,403 Rating 6.0 Hopefully, the snow will permit this hike to finally go. Kessler Peak is one of the best intermediate hikes in the Wasatch and provides a very enjoyable day. Meet at the mouth of Big Cottonwood at 8:00 a.m. Leader: Denis Zwang, 278-8273.

AUGUST 30
Saturday MT. BALDY FROM ALBION BASIN. El. 11,068 Rating 3.5 This is an enjoyable hike up Albion to the ridge and then up to the peak for lunch and an excellent view. Meet at the mouth of Little Cottonwood at 9:00 a.m. Leader: Joyce Sohler, 272-2624.

AUGUST 31
Sunday WHITE PINE LAKE. El. 10,000 Rating 5.0 White Pine Canyon is the disputed area of the Lone Peak Wilderness Area Proposal and is a very beautiful alpine setting. Be sure to check out the massive avalanche possibilities on this hike. Call the leader for meeting and time. The leader would also like a ride (he lives in the Avenues). Leader: Carl Bauer, 355-6036.

AUGUST 31
Sunday FLAGSTAFF PEAK. El. 10,530 Rating 4.0 Flagstaff lies on the north side of Little Cottonwood Canyon above Alta and provides a somewhat steep but short hike. Meet at the mouth of Little Cottonwood at 8:00 a.m. Leader: Trudy Healy, 583-3411.

SEPTEMBER 4
Thursday EVENING CLIMBING AT STORM MOUNTAIN.

SEPTEMBER 5-7
Fri.-Sun. LODGE OPEN. Host needed; please call Leona Sabine, 363-6035.

SEPTEMBER 6-7
Sat.-Sun. ARCHES CAR CAMP. The leader promises a very fun, enjoyable time. Call the leader, Dorothy Holland, 531-0600, for details and meeting place.

SEPTEMBER 6
Saturday LONE PEAK CIRQUE. El. 10,200 Rating 9.0 The cirque is one of the beautiful areas in the Wasatch and it lies in the heart of the proposed Lone Peak Wilderness Area. Meet at the Draper Crossroads (where 7th East meets Draper) at 7:00 a.m. Leader: Jim Key, 467-1337.

SEPTEMBER 6
Saturday SNAKE CREEK PASS. El. 9,600 Rating 2.0 This enjoyable hike follows the Majestic lift, and then to the pass beyond the lift. The pass overlooks Heber Valley and provides a beautiful view. This is an excellent hike for children. Meet at the mouth of Big Cottonwood at 9:00 a.m. Leader: Bill Swander, 268-3607.

SEPTEMBER 7
Sunday ALBION TO WHITE PINE VIA AMERICAN FORK TWINS. El. 11,489 Rating 10.0 A very fine hike that starts at Albion Basin, climbs to the ridge and then along the ridge to the Twins, and finally returns via White Pine. The ridge has some exposure so be prepared! Meet at the mouth of Little Cottonwood at 8:00 a.m. Leader: Keith Biesinger, 467-0086.

SEPTEMBER 7
Sunday SUNSET PEAK FROM THE LODGE. El. 10,530 Rating 3.5 This fun hike starts at the Lodge, follows the trail to Catherine Pass, and then up the ridge to the peak. Meet at the Lodge at 9:30 a.m. Leader: Jerry Powelson, (1) 756-3004.

SEPTEMBER 11 EVENING CLIMBING AT STORM MOUNTAIN.
Thursday

SEPTEMBER 13 TWIN PEAKS. El. 11,330 Rating 10.5 With the snow gone, this
Saturday hike will be a little harder, but more enjoyable from the summit.
Meet at the mouth of Big Cottonwood at 8:00 a.m. Leader:
Paul Horton, 355-3269.

SEPTEMBER 13 CATHERINE PASS. El. 10,220 Rating 3.0 With the Fall colors
Saturday starting to appear, this hike should be very scenic and fun. Meet
at the Brighton Store at 8:30 a.m. Leader: Bill Shepard, 571-5768.

SEPTEMBER 13 DROMEDARY TO TWIN PEAKS RIDGE RUN. El. 11,330 Rating 15.0
Saturday If the Twins isn't enough for you, join the supermen on this one.
Call the leader for details, meeting place and time. Leader:
Caine Alder, 487-3097.

SEPTEMBER 14 LAKE BLANCHE. El. 8,900 Rating 5.0 This lake lies in
Sunday Mill B, South Fork, and should provide a very excellent Fall hike.
Meet at the mouth of Big Cottonwood at 9:00 a.m. Leader:
Priscilla Horton, 328-9486.

SEPTEMBER 14 SOUTH PEAK OF THUNDER MOUNTAIN. El. 11,154 Rating 11.0
Sunday As of press time, the exact route for this fine hike had not yet
been determined. Call the leader for details, time and meeting
place. Leader: Danny Horton, 328-9486.

SEPTEMBER 18 EVENING CLIMBING AT STORM MOUNTAIN.
Thursday

SEPTEMBER 20 WOOD-GATHERING PARTY. Grease up those elbows, wood-cutting
Saturday volunteers. It's getting near that time. Also need greased-up
chain-saws and pickup trucks. If you have either, please call
Dick Conn, 363-6035. Lodge open Friday and Saturday nights.

OCTOBER 3-5 WESTERN PARTY Saturday night hosted by Bob and Judy Weatherbee.
Fri.-Sun. Lodge Open for overnighers Friday too, John Gottman hosting.

OCTOBER 11-12 WESTWATER (Advanced).
Sat.-Sun.



BEAUTIFUL HOME FOR SALE IN SUMMIT PARK! Architecturally designed, uniquely decorated family home in the pines and aspens. On a quiet street. Five levels, open ceilings to 20', three bedrooms, study, children's play loft, quiet playroom, living room with fireplace, open-beamed dining room with outside deck. Kitchen with cooking fireplace, mud room, basement with plenty of storage and workshop space. Large view windows throughout. Completely carpeted, 2-car garage. Easy, inexpensive upkeep and maintenance. \$76,500. Home is only 3 years old. Contact Rick or Susie Williams, 185 Paradise Rd., Summit Park, Park City, Utah 84060. (1) 649-9063.



May 18

by Mike Treshow

Barely missing the sunrise, we began the arduous 4,000 foot vertical ascent to the head of Tanners Gulch. The gradual slope soon gave way to steeper angles, and the perfect hiking snow all too soon gave way to ice--testing our talents with ice axes, chipping steps and following footsteps. As we climbed above the avalanche debris of a winter's slides, the apprehension of slipping grew. And one young climber's sudden separation from an ice step demonstrated what could happen from a simple slip. His rapid, head-first, upside down glissade ended a hundred yards below. No harm done, but it may have added to our qualms of ascending Sunrise, Dromedary and the Twins once the top of Tanners was scaled. The explosive cracking of ten foot avalanche slabs from the Twins and ridiculously steep slopes didn't help.

Only the boldest, John Gottman and Renny Jackson, went for the peaks as the more cautious hastened down Broads Fork watching various late avalanches break off the overhanging cliffs.

Leader: John Gottman. Climbers: Audrey Stevens; John Sutton; Mike Treshow; Jim Key; Renny Jackson; Roger Jackson and friend; and Richard Wagner.

News of club members

Local climber and Wasatch clubber George Lowe took off this summer with six of the best American climbers to attempt a first ascent of 20,000 foot Mitre Peak in the Himalayas.

Among other achievements, George is known for his first ascent of the North America Wall in the Canadian Rockies last summer. The slides of this ascent that he showed at our Mountaineers Kegger last fall were truly sensational and left many of us more timorous viewers saying, "No way!"

YAMPA GREEN RIVER TRIP

S. Nelson

June 6-9

by Karil Frohboese

Yup, it really is a HIGH-water year. Although our four-day jaunt over and through the famous rapids of the Yampa-Green was accident-free, a few of us swore that next season we'll hear "tennis, anyone?" rather than "paddle!"

A dawn sprinkle greeted us Friday, but quickly the sun came out to roast us the rest of the day. Cheese-mushroom-scallion omelets and sausages warmed our innards, which was a good thing, because the refrigerator temperatures of the river did not do much for our outtards. Who ever heard of a June river trip with not a siggle water fight? Teepee was our first cold water treatment-a fun ride. But an unnamed (subsequently dubbed the *%*#@ rapid) goodie right after Teepee really raised the goose bumps. Miwok (our new, smaller raft) proved itself a good handler in this hole. We have to figure out a way for the people in the front to balance themselves, and we definitely need a floor, but otherwise Miwok rides the waves well. This revelation was a great relief, as you can imagine, to the five guinea pigs initiating the new tub. With burned legs and shoulders, we arrived at our first night's campsite, Harding's Hole. There were two-foot high vegetation, no beaches, and (mercifully) minimum or no mosquitoes this June. We "roughed" it in our wilderness camp on steaks, potatoes, salad and melons.

We obviously hadn't sung our praises to Odin nearly enough, for our second day on the river proved to be a chiller. Not only was Warm Springs ahead, but the heavens were opening and closing on us all day, and would for the next two days. (We were wondering what Eubanks and Welty would look like after having been soundly paddled by 23 of us ...)

I think we could all hear Warm Springs from the moment we awoke Saturday morning. We floated stoically toward it, managing to stop at an Indian site where we waxed poetic about the numerous earthen graineries. After lunch, we filled the four rafts with 18 trepidating people and five rapid-crazed masochists. We wanted to scout Warm Springs from somewhere around Vernal, but our captains convinced us that the eddy before the rapid was just fine. Do you remember THE Warm Springs hole? I hadn't. It was at least as big as the Tower of Babel! And

when leader Weatherbee said, "Anyone who would rather not run Warm Springs, stand over there," one cannot imagine the stampede effect 12 people can create in their attempt to get "over there." So that left 11 hardy men (some of whom looked as though they were thinking "where is Men's Lib when we need it most") to do the deed. A thrill-seeking, slightly suicidal four--Marken, Omana, B. Frohboese, and Hart--would have gladly taken all four rafts through, but a rational plan won out. We were to portage and reassemble two rafts for the 12 chicken hearts, and run the other two rafts through together. That way, we'd have the emergency craft at-th-ready in case one or both rafts flipped and floated on past our Warm Springs campsite for that night.

Naturally we could all hear the thunder, the lightning and the Bach organ music as Weatherbee and Hart captained their crews down the rapid. Twelve blanched faces quaked and glared as Weatherbee spun off the bank and rolled just right of the center of Warm Springs' hole. As Omana and Frohboese glanced an oh-well-we've-had-it look at each other, Miwok glided nonchalantly over the top of the wave's crest, bringing everyone and everything with it, right-side-up, yet! Not a single non-believer of miracles was left in the crowd.

Hart was next, deftly maneuvering his raft down the right side of the rapid, pouring on the steam toward the hole and managing to get a good ride on the right side of the hole. With the biggie of the trip behind us, we settled down to a good taco dinner and LOTS of liquid medicine acquired at a state-run agency.

Next day, we paddled merrily along through Maytag and Whirlpool Canyons and on to Jones Hole by lunch time. The usual activities--washing, hiking to pictographs and snoozing-- took place during and between the rain showers. We ended the day with a ham dinner and a very long, well-attended, very Happy Hour.

Our last day out dawned crystal-clear, but pretty soon we were racing the black clouds in the west through Split Mountain to our take-out point. The sore arm muscles developed here were NOT produced by our vigorous paddling to get to the bus stop by 1:30 pm., nor by our trying to out-run the impending storm. Actually, we were merely trying to keep the rafts upright as we rocked and rolled through Moonshine, paddled like blazes to avoid the wall at S.O.B., and avoided Schoolboy's cave. In high water there are no sand and stone bars to make navigating as difficult as it is in low water, but the speed of the water is awesome. The crew was flushed through in a record one hour.

At Split Mountain Campground, the storm was just about to catch up with us as we ran to jump out of our goose bumps and into our dry duds. Some shared lunches under ponchos as we were blown and drizzled on; others waited for a beer and cheese stop in Vernal. We were back in the city by 6 pm. (another record) and happy to have had a wild, yet hazard-free (?) four days on the Yampa-Green.

Captains: Dave Hart, Craig Marken, Bob Weatherbee and George Wiens.
Crew: Marlene Austin; Doug and Lois Craig; Sue Curtis; Bob Frohboese; Karil Frohboese; Katie Hedberg; Dick and Pam Honn; Bill Keegan; Mary Manley; Mike and Bonnie Omana; Larry and Valerie Peterson; Robyn Russel; Wayne Slagle; Mike Taylor and Judy Weatherbee.

mountaineering high camp

July 4-6

by John Veranth

We registered at the Jenny Lake Ranger Station on a bright, clear 4th of July morning. After some negotiations with the rangers over campsites, and many comments of "We're doing great--only half an hour behind schedule," everyone got across the lake and started up the trail to Hanging Canyon. Four hours of steady uphill backpacking brought us to the snow-filled basin surrounding Lake-of-the-Crags. While stomping out areas for the tents, we were refreshed with watermelon, courtesy (of course) of Larry Swanson. Enough time remained for a hike up Mt. St. John before dinner.

The next morning while the climbers headed in various directions (see Mountaineering Ramblings), a large group of hikers set out on a circuit of the canyon headwall starting at Rock-of-Ages and moving north on mixed snow and rock to the Jaw. The view from the Jaw ranged from Mt. Owen and Grand Teton on the south, across Cascade and Indian Paintbrush Canyons, and north to Jackson Lake. The descent back to camp provided some exciting glissades under near ideal conditions. Several other Saturday hikes were undertaken in this diverse area. Some brave souls were later seen refreshing themselves with a dip in the icy water at the outflow of the lake. The names of the bathers and certain non-participating onlookers are withheld to protect the innocent. During dinner, the weather became threatening as dark clouds moved up from the valley. The usual after-dinner socializing was interrupted by rain, and Larry Perkins' long-suffering tent became the gathering place for many who refused to let nature ruin the evening.

Sunday morning provided time for short climbs and hikes before the unpleasant task of breaking camp and beginning the trip home.

Participating were: John Gottman, leader; and Larry Swanson, Barry Evans, Mike Treshow, Mike Jr., John Mason, Lew Hitchner, Larry Perkins, Hal (mumps) Gribble, Lyman Lewis, Jim Dalgleish, Lorrie Cahn, Bruce Reed, Jeff and Judy Ballantyne, Bonnie Baty, LeRoy Kuehl, Keith Biesinger, Gwen Ryan, Barbara Smith, Justin DiTuri, Tom Dickman, Bob Wargowsky, Jim Key, Doug Crow and John Veranth.

constitution

OF THE WASATCH MOUNTAIN CLUB, INC.

as issued July 15, 1975

ARTICLE I - PREAMBLE

Section 1. The name of the club shall be Wasatch Mountain Club, Inc. It is a non-profit organization, organized and with headquarters at Salt Lake County, State of Utah. Its purpose shall be to promote the physical and spiritual well being of its members and others by outdoor activities; to unite the energy, interests and knowledge of students, explorers and lovers of the mountains of Utah; to collect and disseminate information regarding the Rocky Mountains in behalf of science, literature and art; to explore and picture the scenic wonders of this and surrounding states; to advertise the natural resources and scenic beauties of the State of Utah; and to encourage preservation of forests, flowers and natural scenery as well as wild animal and bird life.

ARTICLE II - MEMBERSHIP

Section 1. The membership of the Wasatch Mountain Club shall be made up of life, honorary, regular and spouse members, all of whom shall be 18 years of age or older.

Section 2. As outlined in the By-laws, any person meeting the admission requirements for a specific membership, whose fees and annual dues are paid and who has received a favorable vote of the Board of Directors, is a member of this club with all rights and privileges of the type of membership to which he has been elected.

Section 3. The rights and privileges of members shall include but not be limited to: voting, holding office, attending club functions at member rates and examining club books and records at reasonable times.

Section 4. At least three (3) general membership meetings shall be held each year as specified by the Board of Directors. One general membership meeting shall be the annual business meeting at which the election of trustees and directors shall be held as outlined in the By-laws. A quorum shall consist of fifteen (15) members, including two (2) directors.

Section 5. The membership of any member may be terminated by a unanimous vote of the Board of Directors. Whenever a membership terminates, all rights and interests pertaining thereto revert to the Wasatch Mountain Club.

ARTICLE III - DIRECTORS

Section 1. The Board of Directors shall consist of at least 10 but no more than 15 qualified members, as defined in the By-laws, who shall be elected. The term of office shall be one (1) year or until a new

board is elected. A new board shall take office at the first scheduled Board of Directors meeting following the annual business meeting.

Section 2. A president, secretary and treasurer shall be part of the Board of Directors and shall be its officers.

Section 3. Any vacancy occurring in any office shall be filled by appointment by the President, subject to the approval of the remaining Board of Directors.

Section 4. Each director shall perform the duties outlined in the By-laws. If any director be considered inactive or otherwise undesirable, he may be discharged from office by unanimous vote of the remaining directors.

Section 5. No director shall receive any financial remuneration for services rendered to the club in such capacity.

Section 6. The control of all business and activities shall be vested in the Board of Directors and Trustees. The Board shall act only at regular meetings or special meetings upon proper notice. A quorum of the Board shall consist of a majority of its members.

ARTICLE IV - TRUSTEES

Section 1. The Board of Trustees shall consist of four elected members in good standing and the president of the club. One member shall be elected each year at the annual business meeting for a four year term. Each member shall have served previously for at least one year on the Board of Directors and shall have been a regular member of the Wasatch Mountain Club for at least five (5) years.

Section 2. The senior member of the Board of Trustees shall act as chairman. The chairman shall call special meetings as requested by the president of the club, or at his own discretion, upon proper notice.

Section 3. Should a vacancy in the Board of Trustees occur during the year, a new member shall be elected by the remaining trustees, said member to serve until the next annual business meeting of the club, when a member shall be elected by the membership to serve for the unexpired term.

Section 4. Each trustee shall perform the duties outlined in this constitution and contained in the position's records. If any trustee be considered inactive or otherwise undesirable, he may be discharged by unanimous vote of the remaining trustees.

Section 5. Any expenditures of the club which exceed \$300 in the single project or the sale or other disposal of any property valued in excess of \$200 must be approved by a majority of the Board of Trustees. A written report to the president or Board of Directors shall be made within twelve (12) days of the date that the chairman or a majority of the trustees are formally informed of the proposed action. Should the Board of Trustees fail to act within the specified time, the matter shall be automatically referred back to the Board of Directors for action.

Section 6. The authority and responsibility for the interpretation of this constitution shall be vested in the Board of Trustees.

Section 7. The Board of Trustees shall be responsible for an audit of the books of the treasurer at the end of his term of office. It shall be completed within thirty (30) days after the term ends.

ARTICLE V - HISTORY

Section 1. There shall be a written and pictorial history of the club maintained, giving recognition for outstanding services of individuals or groups of individuals to the club. The Board of Directors shall appoint a club historian to compile and maintain said history.

ARTICLE VI - PUBLICATIONS

Section 1. The RAMBLER shall be the official publication of the Wasatch Mountain Club.

ARTICLE VII - RULES OF ORDER

Section 1. Robert's Rules of Order shall govern all parliamentary matters.

ARTICLE VIII - DURATION

Section 1. The period of duration is perpetual.

ARTICLE IX - AMENDMENTS AND BY-LAWS

Section 1. This constitution may be amended by a two-thirds vote of the members present at any general membership meeting, provided that notice has been mailed to the general membership at least ten (10) days before the date of such meeting, such notice stating generally the substance of the proposed amendments, the time, date and place of the meeting.

Section 2. Any member may submit a proposed amendment to the Board of Directors for consideration and it shall be referred to the membership upon approval of the Board.

Section 3. By-laws, not in conflict with the constitution, may be passed, amended or repealed at any meeting of the Board of Directors by a two-thirds of the total Board, provided all Board members are notified by mail or otherwise, of the exact nature of the proposed change, the time, date and place of meeting, at least ten (10) days prior to the meeting.

rules and regulations

OF THE WASATCH MOUNTAIN CLUB, INC.

GENERAL RULES OF CONDUCT

1. In the event of any accident or rescue, the expenses incurred shall be the sole responsibility of the individual incurring said expenses whether or not said individual shall deem them necessary.
2. No person shall be permitted to carry or use firearms.
3. All persons will refrain from needless destruction of plant and animal life.
4. No short-cutting on trails.
5. The trip leader is in full charge and all persons will be governed by his decisions.
6. No person shall be allowed to participate in a trip if, in the opinion of the leader, he is not qualified and adequately equipped to successfully complete the trip.
7. Leave camps and trails in same or better condition than found. Carry all non-burnable trash (cans, glass, foil, etc.) back out.
8. Obnoxious indulgence in alcoholic beverages will not be tolerated in connection with club functions.
9. Children can be taken on hikes with permission of leader in advance.

LODGE REGULATIONS

1. Respect club property at all times.
2. Fires built must not be left unattended.
3. Positively no smoking in upstairs dormitories.
4. Unoccupied lodge must be kept locked. This applies to lodge weekends when all members may be away for certain periods of time.
5. Before leaving, review checkout list posted on bulletin board near kitchen.
6. No animals allowed inside the lodge.
7. Leaders shall obtain keys from lodge director or designated person and return them within two days after lodge activity.
8. The lodge is available many times during the year for rental to approved non-member groups at reasonable rates. Contact lodge director for details.
9. Children are not to be allowed in the lodge unless willing leader specifically signifies thus.



Dan Thomas bracing in the Green River, Greys Canyon, Spring 1975

- photo by Judy Davis

We can send you down the river
with or without a paddle.

We've got Kayaks...complete with all accessories
and instruction.

We now offer guided pontoon raft trips down the
Colorado and Green rivers, via Canyonland Expeditions,
"the foremost river outfitter in the
country."

Stop by...we love to chat...about boats and about
"linger awhile country."

TIMBERLINE SPORTS

3155 Highland Drive

Salt Lake City, Utah 84106

466-2101

SOUTH RIDGE - MOUNT SUPERIOR

Climbing Report

June 29

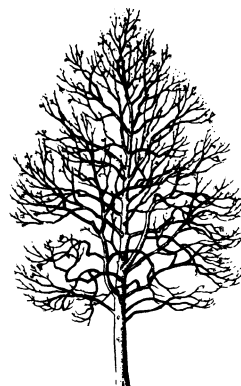
John Mason

While a large group of hikers was congregating at Alta to enjoy the usual route up Superior, we five intrepid souls attempted to climb the bank by the avalanche gate above Snowbird. We scurried up through light brush to the beginning of the scrambling. None of us had ever done the climb before, but we had been assured by John Gottman that the route was "obvious."

A number of minor difficulties were encountered and overwhelmed as we made our way up the ridge, including a large amount of loose rock on the lower slopes and a few short pitches of moderate scrambling. Five hours after embarking, we reached the summit of Monte Cristo in time to meet LeRoy and a few of his hikers. After some refreshment, we ambled to the summit of Superior where we amused ourselves by reading some very interesting entries in the summit register - then back to Monte Cristo for a bottle of wine.

Our descent was an exhilarating 3,000-foot glissade down the Superior slide on excellent snow. Gwen demonstrated her excellent glissading technique, always on her feet, while the rest of us managed with somewhat less style, though no less fun. We reached the bottom in 40 minutes, clambered down the treacherous dirt bank below the snow, and retired to the Alta Lodge sun deck for liquid refreshment.

Leader pro tem: John Mason.
Participants: Lew Hitchner, Lorie Cahn, Bonnie Baty and Gwen Ryan.



TRAIL GUIDES

Wasatch Trails \$1.50
HIGH UINTA TRAILS \$2.95
Cache Trails \$1.50
Wind River Trails \$2.95
postpaid from:

Wasatch Publishers, Inc.
4647 Idlewild Rd.
Salt Lake City, Ut. 84117

THUNDERBOLT RIDGE

June 22

by Lew Hitchner

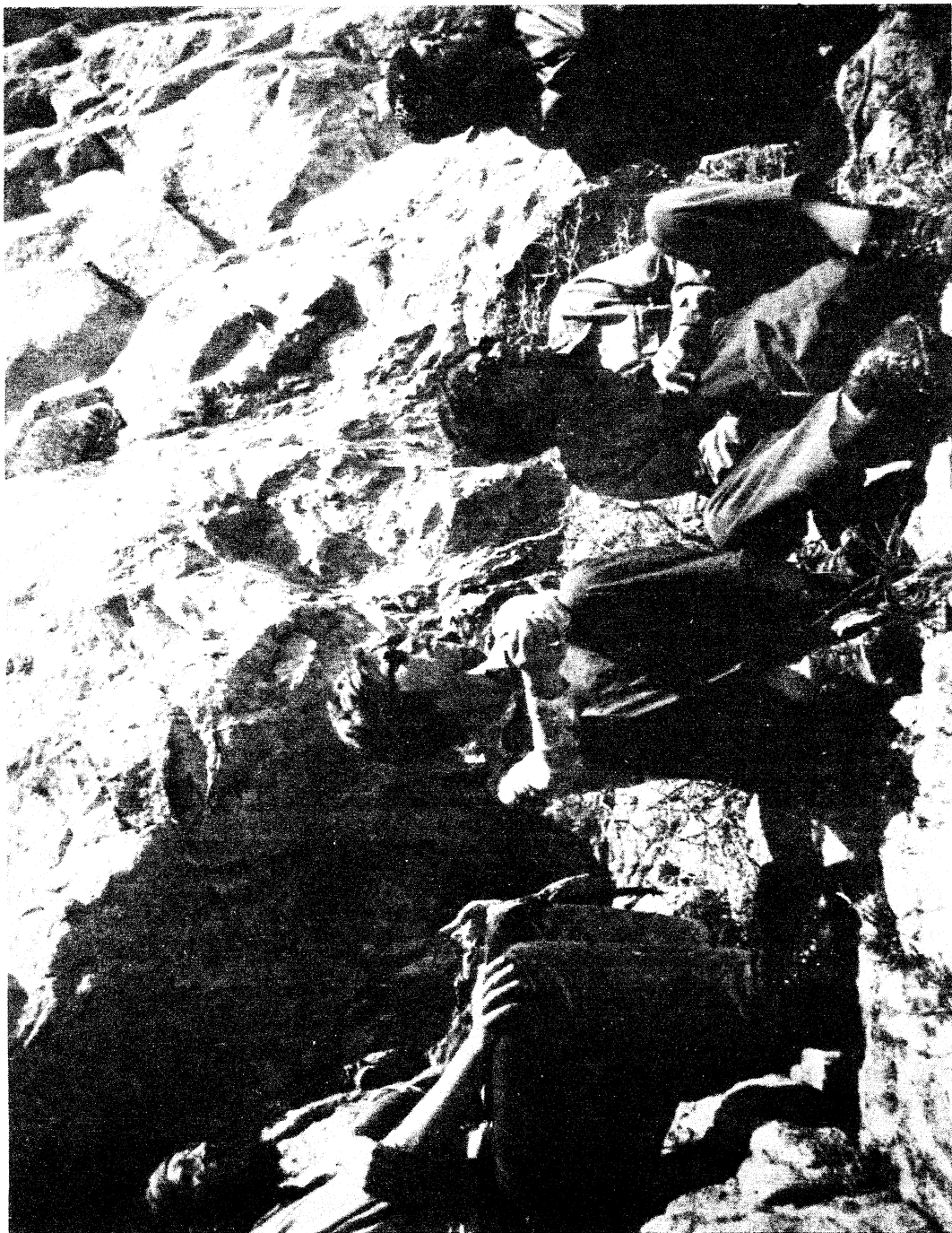
Sixayem is awfully early, but before 7 we all got started. We were accompanied by the Beat-Outers until we left Red Pine Trail. The hike, which was on snow all day, went very well. The excellent weather and beautiful vistas (especially the south ridge of Little Cottonwood) were enhanced by the fresh white coating of recent snow.

While resting on the saddle of the north ridge of the Pfeifferhorn (and observing the Beat-Outers on the east ridge), we spied a lone figure charging along our trail across Maybird. Hopeful that it was Larry Swanson with a watermelon, we soon learned it was only a Gribble. Efforts to repel his ascent up the ridge with snowballs were to no avail, and he joined up with our merry band. We reached the start of the climb by noon. Gribble was sly; he scrambled up the ridge and was soon out of sight. We later learned he summited in 1 $\frac{1}{2}$ hours, joined the Beat-Outers on Thunder Mountain, and was down Bells Canyon by 6 pm. The rest of us should have been so lucky.

Thunderbolt Ridge is a slanting, knife edge with great exposure on both sides but plenty of good solid granite. It was complicated by spots of snow on the ridge and two very high angle, very exposed snowfields at the top. Climbing times varied from Gribble's 1 $\frac{1}{2}$ hours to Gottman's rope 3 hours, to the last ropes 8 hours (due to accumulated delays of the ropes ahead). Since the hike down Hogum is a minimum 3 hours (if you know the way), this meant a moonlight arrival by some. The philosophical implications of this descent and the advisability of bringing a flashlight on such ventures were discussed between Gottman (from the floor of Hogum Cirque) and Perkins (from the top of Thunderbolt Ridge). Gottman: "You're going to be coming down in the dark." Perkins: "There's not much we can do about that." Gottman: "Do you have a flashlight?" Perkins: "No! Do you?" Gottman: "Of course!" Perkins: "Good for you!"

Miraculously, everyone survived. No one found the trail down Hogum, and most did a lot of bushwacking and searching for the bridge across Little Cottonwood creek. Renu, who skipped the climb and hiked out in late afternoon, went too far downstream but found a fallen tree to shinny across. The last people got down after midnight. In spite of all our troubles, we all agreed that it was, as advertised, an experience!

Rope leaders: Larry Perkins (trip leader), Danny Horton, John Mason and John Gottman. Followers: Mark Ebaugh, Mike Treshow, Bonnie Baty, Peter Cartwright and Lew Hitchner. Soloist: Hal Gribble. Grandstander: Renu (Hoo-hoo-hoo) Jalota.



Opposite page - Mike Hendrickson, Judy Davis, Danny Thomas and Bonnie Baty enjoying the view from the base of Hound's Tooth, Foothill II hike. From a slide by Trudy Healy.

broads fork

June 29

by Mike Hendrickson

LODGE NOTES

by Phil Nelson

The snowdrifts were piled so high around the Lodge on June 21st that I could still climb up to the ridgepole, and the shutter removal crew had to dig down to get the shutters. Obviously, this year's spring cleanup was strictly an inside job as we scrubbed floors, replaced windows, and cleaned up in general. If you weren't there, you missed out on Elfriede Snyder's sloppy joes, Phyllis Robison's homemade cookies, and Betty Hurlbut's lasagna. Special thanks also to Andy Schoenberg for bringing the scrubber and to Dwight Nicholson for trucking. In all, 24 people showed up (thank you) with such names as Anderson, Belka, Codd, Conn, Davis, Horton, Hurlbut, Marken, Morrison, Nelson, Cmana, Robison, Ruscetta, Sabine, Schoenberg, Snyder and Weatherbee.

By the way, at lunchtime it snowed for about an hour.

Twenty-three enthusiastic hikers started up from the bottom of the "S" turn along the Broads Fork Trail. The group soon spread out but reunited for the exciting stream crossing. After that, we spread out again but met for lunch (at 10 am?) on the hillside above the "swamp." There we feasted and met some of the local wildlife, including a somewhat bewildered Crotalus Viridis Lutosus. After lunch some of the group took off for a nearby ridge while the rest headed back to the cars and civilization.

Leader: Mike Hendrickson.

Hikers: Michele Swee; Lynn Larson; Sylvia Weber; Elizabeth, Monica and Mike Liebergesell; Jim Ercenberger; Fu-Ping Yao; Mike Treshow and Mike Jr.; Joy Ray, Chuck Denton; Stew Harvey; Jean Daugherty; Shelley Hyde; Katie Hedberg; Ann and Paul Fagerness; Sara Stevens; Doug Stark; Mary Manley and Mike Taylor.

BLUE RIBBON HOMES ARE BUILT FOR ENVIRONMENTALISTS!



functional fireplaces



double-pane windows



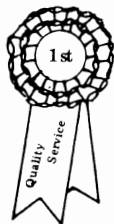
extra insulation



money is reserved at 8½%



Willow Creek area (8200 South)



SAM ALLAN

487-8901

BLUE RIBBON

REALTOR

2870 EAST 3300 SOUTH •



by John Gottman

Our Thunderbolt Ridge event was a definite learning experience. It ended at midnight after a single flashlight descent of Hogum for the last six of our party of eleven. As usual, slow climbing and over-protecting took its toll. Bonnie Baty completed the climb to become the third woman to do the route. Audrey Stevens did the first ascent with the club last June, and Suzanne Key completed the route with me last August.

Our Hanging Canyon trip was a great success in terms of summits and climbs completed. The trip writeup will expand on this, but I want to give special mention to the fine climbs done. On July 4th after the hike-in, Larry Swanson and Barry Evans did the north face of Symmetry Spire, I, F4. On July 5th on Symmetry Spire, Larry and Barry did the Direct Jenson Ridge, III, F7; Jim Key and Doug Crow did the Durrance Ridge, III, F6; and Larry Perkins and I did the Southwest Ridge, II, F6. John Mason and Lew Hitchner did the East Couloir of Rock of Ages, II, F5 the same day. On July 6, John and Lew did the North Face of Symmetry, and Larry Swanson and Gwen Ryan did the Southwest Ridge. John Veranth, Lorie Cahn and I started the Rock of Ages but ran out of time. Hiked F3 summits included Mt. St. John, Symmetry, and the Jaw. Of a party of twenty-four, all but one did at least one summit and many people did three. Moderate-angle snow added interest to all the ascents and added emphasis to the need to know how to handle an ice axe.

The aggressive group created esprit de corps and helped me realize one of my personal goals as Director: to do more roped climbs on our high camps.

I can remember being on this same spot last October. We paddled my canoe across the lake. Paul took a beautiful picture of us with the Grand in the background. I guess they purged the 1974 register entries.

BIG MOUNTAIN

April 19 by Pete Hovingh

On perhaps the only sunny day in April, twenty-four persons hiked various distances on the ridge behind the zoo. Four even made it through the snow to reach the top.

Leader: Pete Hovingh. Participants: Bill and Pat Swander; Ali Atashrod; Helyn Woody; Marcia Biddle; M. Moilanen; Lynn Newbald; Joan and Ric O'Nion; George and Trudy Healy; Ruth Holland; Susan Roche; Karen Butter; Melissa Litton; Denis Zwang; Karl G. Lagerberg; John and Louise Dawson; Frank West; Peter and Margo Hovingh and Dan Thomas.

RENT IT!

**Summertime
Rentals and Demonstrators**

**TENNIS
WATER SKIS
KAYAKS
PACKS
SLEEPING BAGS
TENTS
STOVES / HEATERS**



THE MOUNTAINEER

207 South 13th East
and now at
TROLLEY SQUARE
Phone 582-2338

LAKE

CATHERINE

July 5

by Bob Meyer

We began at the Lodge, winding up through lower meadows sprinkled with yellow Dogtooth Violets, budding Bluebells, Marsh Marigolds, Wild Hellebore and other wild flowers. The bowl above Lake Mary provided novices like me the experience of late spring snow. Kathy Meyer explored a small snow cave via the roof.

After a lunch overlooking Lake Catherine, still locked in snow and ice, we started our descent with some lessons on glissading from Mel Davis. Elmer Boyd led some of the more hardy up into the gathering thunderclouds to Catherine Pass.

Our patient leader was Elmer Boyd. Hikers included: Wolf and Elfriede Snyder; Mel and Clare Davis; Bill Burke; Bob, Susan, Kathy and Crissy Meyer; Rob Wells; Kay Scribner; Rikki and Cherie Peterson; Kaye Scribner; Jack Moyers; Hannelore Janke; Cliver Birth; Lisa Christensen; Karen George; Ken and Anne McCarty; Glenda Collins and Adele Poorte.

THAYNES PEAK via Millcreek Canyon

June 22

by Pete Hovingh

The partridge drummed on the way up, and a rubber boa was trying to warm itself on the trail on the way down. A few Morel mushrooms grew next to the trail, but they were left alone. More could be said but the poetry of the leafing aspens expressed itself better than the author.

Leader: Bob Weatherbee. Participants: Carol, George, Art and Paul Edison; Shelley Hyde; John Riley; Marty Vandersteen; John Hendrickson; Randy Taylor; Ruth Henson; Ralph and Faye Hathaway; Dale Green; Doug Stark; Paul Rubinfeld; Leslie Speaks; Linda James; Janelle Rouze; Jan Pelling; Fran Flowers; Bill King; William and Pete Hovingh; and Mike Dmarra.

Snake River - ^{But not} Alpine Canyon (too high water)

June 19-21

by Sarah Yates

After a warm night aboard the bus while rain drizzled outdoors, fledgling rats embarked upon the Snake River at Moose bridge and spent a morning dodging snags, not quite dodging all the sandbars, and learning to do "wheelies" through the overhanging trees. Swift-er water was encountered after lunch, and towards nightfall even the beginners were navigating towards the standing waves and rapids for the fun and spray. Happy hour (as scheduled) included the usual goodies'n drinks served on overturned boats, the steaks (as scheduled) sizzled just right, and the trip to Jackson (unscheduled) by half the crew was sensational.

Word is that Jackson was considerably more lively with the gyrations of the rats (especially Chuck) despite the fact that they'd hitched into town in the rear of a pickup whose most recent occupants were chickens. A Michigan cowboy was hijacked during the evening to provide the eight with transportation back to the sandbar camp, with 16 arms and legs jumbled into the rear of a Vega. Faith in human nature was indeed restored as the driver hailed the crafts in mid-river the next morning to return a jacket left in his car.

In Sabbath observance, the Ode to Odin was rendered (literally) in three boats. Only the leader's boat knew the tune, so it was just hoped that the other versions would have the proper effect. Even rain and clouds didn't dampen spirits, but the traditional mid-river waterfight dampened everything else and turned

the sunny lunchspot into a semi-nudist colony as outer clothes were hung on trees to dry. This provided a photographic highlight of the trip as Allen's one-leg-long and one-leg-short thermals came into hilarious view.

Our "super-daddy" bus driver awaited us at Elbow campground and everything was soon loaded aboard. A quick stop at Alpine assured that most of the occupants were also loaded by the time the mealstop was made in Afton. There the accommodating bus driver was treated to dinner, and final decisions made for the momentous awards presentation ceremony.

Awards went to Keith as bitch of the trip (what a cynic); Allen as pig of the trip (ask about the shrimp tails); Tom as male chauvinist pig (trying to buy his way into feminine tents with tasty gourmet tidbits); Sarah as pee-preventer (for successfully keeping three pooches from desecrating the stacked gear); and to Chuck and Joy as quacks of the trip (for their collection of medical advice and/or medical supplies). Of course, three cheers went to Karen as well as to her two-wheeled T-shirt.

Leader and chief captain: Karen Weatherbee. Captains: Chuck Denton, Bill Yates and Allen Palumbos. Paddlers: Ruth Hoppe, Joy Ray, Mary Brown, Sarah Yates, Arlyne Burton, Teresa Farr, Tom Kinster, Susan Miller, Judy Whitehead, Mike Zovortink, Bob Milsap, Sharon Guthrie and Keith Biesinger.

UNIFORM DISTRESS SIGNAL

Every mountaineer or person spending any time outdoors should know about the uniform distress signal and understand his obligation should he hear or see such a signal. The signal is "three quickly repeated calls (audible or visual), repeated at regular intervals." The interval of time between calls depends upon the method of signaling used. When using a flashlight or waving a conspicuous object, the interval may be only one or two seconds. When using a whistle, hallooing, or displaying a smudge, the interval should be longer. The interval of time should be long enough that any echo or trace of the first signal has died out. Anyone noting a distress signal is morally obligated to go to the assistance of the party in distress, or if he is incompetent to do so, to notify rangers, guides, or any person able to accomplish a rescue. So as not to obliterate or confuse a distress signal, it is desirable that people in the mountains refrain from yodeling, hallooing or yelling. This is especially true where there are several separate parties making a difficult climb.



"Beaver" ponds of Havasu Canyon - one of the many highlights of the Grand Canyon trip. Anonymous water nymph in foreground. From a slide by Mike Treshow.

A P P L I C A T I O N F O R M E M B E R S H I P

WASATCH MOUNTAIN CLUB
3155 Highland Drive
Salt Lake City, Utah 84106

NAME (Print) _____ Telephone _____

Name of spouse (only if spouse wants membership also) _____

Address _____ ZIP _____

Occupation (Optional) _____

I hereby apply for membership in the Wasatch Mountain Club and enclose \$ _____ as my annual membership dues for the year _____, \$ _____ of which is _____ for a subscription to the Rambler for the year and \$4.00 entrance fee. (From January to August, dues are \$6.00 of which \$5.00 are for a Rambler subscription - Spouse dues (non-subscribing) are \$3.00 - plus \$4.00 entrance fee. From September to December, the dues are \$3.00, of which \$2.50 are for a Rambler subscription -- Spouse dues (non-subscribing) are \$1.50 - plus \$4.00 entrance fee.) I (do) (do not) desire to receive the Rambler.

I have attended two Club activities in the past 12 months as required for membership such as hikes, ski tours, camping trips, rock-hound trips or work parties and have been recommended by two trip leaders who are Club members. Social events such as lodge parties, winter socials, etc. are not activities qualifying for membership. I agree to abide by all the rules and regulations of the Club as specified in the Constitution and Bylaws as determined by the Board of Directors.

I am specifically interested in the items checked below:

Hiking _____ Ski Touring _____ Boating _____ Mountaineering _____ Caving _____
Cycling _____ Conservation _____ Writing and Editing _____ Organizing social
activities _____ Lodge Work _____ Photography _____ Other _____

CLUB ACTIVITIES ATTENDED:

1. _____	Date _____	Signature of recommending Trip Leader _____
2. _____	Date _____	Trip Leader _____

(Note: The signature of a Director may be substituted for one Trip Leader.)

Signature of Applicant

DRUID ARCH

May 24-26

by John Gottman

Mike Hendrickson was the first one on the trail from the Elephant Hill Trailhead even though he had driven straight (?) from work with no sleep. The rest of us followed closely, being unable to sleep because of the noisy dirt bikes and 4-wheel "units." We found Mike dozing in a dry stream bed a couple of miles in. This was our camp.

Leader Don "Ridgebear" Colman took us up the stream bed to the spectacular Druid Arch, after which we set up camp and prepared dinner. Don took most of the party into Chesler Park to "watch the sun go down." The sun also went down on the rest of us who were having a rather lively cocktail and beer party, enhanced by Tad Hadaka's singing and guitar playing. We marveled at the total eclipse of the moon. Several moons appeared to some people.

Sunday we went on a moderate hike into Virginia Park. Mike Treshow gave us an informative talk on the area, explaining that it has never been grazed and pointing out the differences in the vegetation between Virginia and Chesler Parks. The interesting exposed sandstone scrambling explained the inaccessibility of Virginia Park (and "mother" Colman's concern).

Titanic Paul Horton and Wolfman Renny Jackson staggered into camp Sunday evening after two days of touring in Renny's "unit." Larry Perkins and Bill Shepard packed in the rest of the beer from the cars, and the Sunday evening party began. It was significantly more disgusting than the previous night, but it ended early.

Most of the 45 to 50 people who were scattered along the half-mile stretch of the stream bed broke camp and were on the trail out by mid-morning Monday.

We had clear skies and fairly cool temperatures for late May. The group was made larger by several cancelled events, but we were spread out so it didn't seem too crowded (except maybe to the two topless girls who met us on the way to Druid Arch). It was another fine Don Colman trip.

Backpackers included: Tad Hadaka; Lynn Larson; Jody Butterfield; Mike Treshow and Mike jr; Bill Shepard; Paul Horton; Renny Jackson; Audrey, Stanton and Adrian Stevens and friends Gail Borden, Grant LaGrange and Brett Hill; Stan Davis and Stanley jr; Mike Hendrickson; Renu Jalota; Bob and Judy Weatherbee and daughter Carri Clark and friend "Cookie" Oveson; Jackie Thomas; John Gottman; Mary Welch; Larry Perkins; Joyce Sohler; Renu Jalota; Kay Hedberg; Sue Curtis; Marilyn and Kermit Earle; Dorothy and Ruth Holland; John Ackerman; Glenda Collins; John and Marsha Verandt; Mary Manley; Mike Taylor; Nancy Hogan; Bob Whelan; Kevin Walsh; Ray Miller; LeRoy Kuehl; John Horvath; Bill and Pat Swander; George Edison; Paul Edison; apologies to others I may have missed; and Don and Marian Colman and son Mike, leaders.

WASATCH MOUNTAIN CLUB, INC.

3155 Highland Drive/Salt Lake City/Utah 84106

Vol. 52, Issue 8 (1975)

SECOND CLASS
POSTAGE PAID
AT SALT LAKE
CITY, UTAH.

BOARD OF DIRECTORS

DALE GREEN	PRESIDENT	277-6417
JUDY DAVIS	SECRETARY	272-6435
MEL DAVIS	TREASURER	278-3174
KEN McCARTY	BOATING	466-3297
MIKE OMANA	CONSERVATION	561-4537
PEGGY TAYLOR	ENTERTAINMENT	272-4624
MIKE HENDRICKSON	HIKING	484-2640
DANNY THOMAS	KAYAKING	561-8606
DESIREE (DIZ) MAYS	LODGE	582-3818
JUDY WEATHERBEE	MEMBERSHIP	272-5510
JOHN GOTTMAN	MOUNTAINEERING	359-4683
AUDREY STEVENS	PUBLICATIONS	(1)849-8884
DWIGHT NICHOLSON	SKI TOURING	359-6178