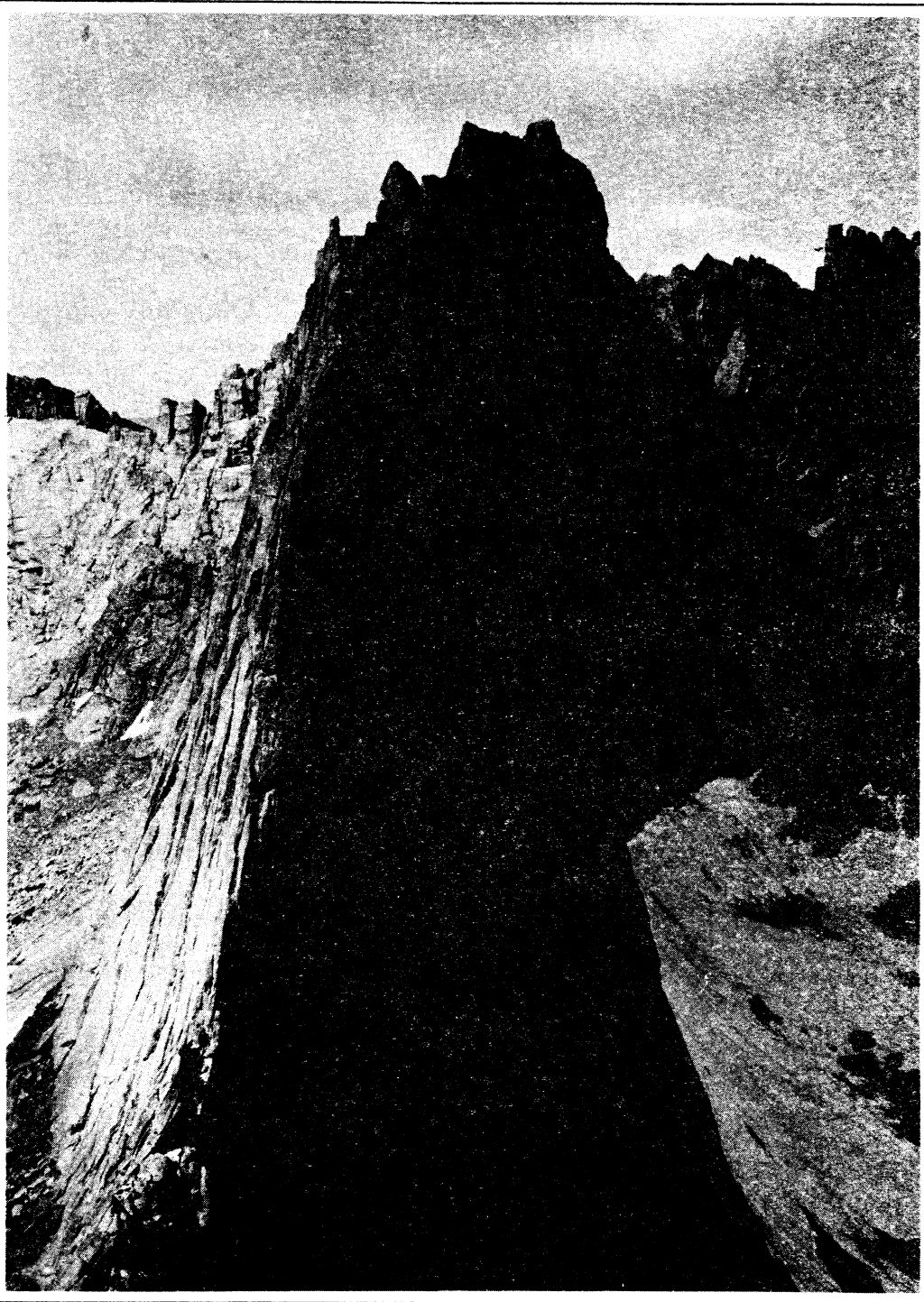


# *The Rambler*

JANUARY 1975 Vol. 52, Issue 1



*Official publication of THE WASATCH MOUNTAIN CLUB Salt Lake City, Utah*

# news & notices

COVER PHOTO: Wolf's Head, Cirque of the Towers, Wind Rivers. Photo by Larry Swanscn.

## thanks

...to George and Georgia Randall  
for mailing the January RAMBLER

---

As some of you already know, the old Union Pacific Ice Plant burned down again last month. Luckily the club boats stored there were spared, but we now need a new place to store them. If anyone knows of a garage or some place suitable, please call Ken McCarty, 466-3297 or Mike Omana, 561-4537.

---

THE RAMBLER is published monthly by the Wasatch Mountain Club, Inc., 3155 Highland Drive, Salt Lake City, Utah 84106. Subscription rates are \$5.00 a year. All correspondence regarding changes of address, mailing, etc. may be directed to the Membership Director at the address above.

Application to mail at 2nd class postage rate is pending at Salt Lake City, Utah.

## Rambler Deadline

...for FEBRUARY is January 15, Wednesday. Please have your articles and schedules typed and mailed to:

ATTENTION: RAMBLER EDITOR  
Wasatch Mountain Club  
3155 Highland Drive  
Salt Lake City, Utah 84106

The Wasatch Mountain Club is governed by a Board of Directors - 13 representatives elected by the membership. Through the courtesy of Timberline Sports, our mail is sent to their address, 3155 Highland Drive, for collection only. The Club's telephone is located at O'Dell's Shoe Repair Shop, 425 South 8th West. This phone is maintained as an answering service only by Life Members 'Pete' (O'Dell) Peterson and wife 'Pinky'. They take time out from their work to answer the phone and relay incoming messages to the proper Director. The Petersons do not hold any office, or attend Board meetings or are they informed by the Board of official actions. If a trip leader cannot be contacted or is not specified, call the Director of that department for information. The Board strongly desires to hear comments, suggestions, inquiries, and criticisms concerning the operation of your Club. Please feel free to phone any Director or write to the President. Names will be withheld upon request, but anonymous letters will be disregarded.

Mountain Club business is conducted only on the first and third Wednesdays of each month. At that time, and only at that time, is the mail opened, new membership applications voted on, dues payments recorded, address changes made, and all other business requiring board action conducted. All board members cannot attend all board meetings and although an effort is made to fill in during a member's absence, some business is held for action until the next meeting.

# CLUB ACTIVITIES

## For JANUARY 1975



REGISTRATION WITH TRIP LEADERS is important for ski tours since weather and snow conditions can cause cancellation or change in destination. It also aids in organizing car shuttles early enough to avoid delays. Register with the leader by some reasonable hour on the day before the tour.

RATINGS OF SKI TOURS (X,Y) describe the difficulty of the climb (X) and the skiing proficiency required to get down (Y). Both are rated from 1 to 6, in order of increasing difficulty. A detailed description of some popular tours is in the November 1974 RAMBLER. Contact the leader if you are in doubt about your ability to do the tour.

Avalanche information is available from Milt Hollander, 277-1416, and from the Wasatch National Forest winter sports information recording, 487-2093. The snow rangers at Alta get so many calls that you should use them only as a last resort, and please don't call them late in the evening. Avalanche probes and cords are required on advanced ski tours. Probes are available to rent through Ski Touring Director Dwight Nicholson and for sale from Dave Hanscom, 487-6065.

JANUARY 10-12  
Fri. - Sun.

LODGE OPEN. Hosted by Jim McCullough, 466-4061.

JANUARY 11  
Saturday

TIMBERLINE NORDIC SKIING CLINIC. FREE. Call Timberline Sports for details, 466-2101.

JANUARY 11  
Saturday

BRIGHTON TO HONEYCOMB TO SILVER FORK--INTERMEDIATE ALPINE TOUR. Suitable for experienced nordic skiers. Meet at 9 am at the mouth of Big Cottonwood. Call leader for details, Oscar Robinson, 278-5009.

JANUARY 11  
Saturday

ANNUAL NOMINATIONS BANQUET. See details page 10.

JANUARY 12  
Sunday  
MILL F TO SCOTTS PASS AND JUPITER HILL--INTERMEDIATE SNOWSHOE TOUR. Suitable for intermediate nordic skiers. Meet at 9 am at the mouth of Big Cottonwood Canyon. Leader: Kermit Earle, 466-3132.

JANUARY 12  
Sunday  
PARK CITY SKI TOUR--INTERMEDIATE CROSS-COUNTRY. We will take the Resort gondola to the top and then turn left or right, depending on the permits we get. Call leader Bob Everson, 487-0029, for details.

JANUARY 12  
Sunday  
WINTER SOCIAL (Adult). All are invited whether you ski or ride horseback! Come as you are and enjoy the first winter social of 1975. Phil and Kay Berger will be serving a "help yourself dinner" and liquid refreshments at a nominal "beat inflation cost"! Lots of good conversation and a great way to meet new friends. Starts at 6 pm. Call for directions. 2250 E. Pheasant Way (5650 So), south of Cottonwood Mall, off Highland Drive. Phone 278-7412 or 272-3110.

JANUARY 18  
Saturday  
TIMBERLINE NORDIC SKIING CLINIC. FREE. Call Timberline for details, 466-2101.

JANUARY 18  
Saturday  
MINERAL FORK NORDIC TOUR (2,2). This is a very enjoyable intermediate tour. Meet at the mouth of Big Cottonwood at 8:30 am. Leader, Jack Spear, 359-3667.

JANUARY 18  
Saturday  
SNAKE CREEK PASS SNOWSHOE TRIP (1,2). A very scenic beginner tour with some beautiful views at the pass. Meet at the mouth of Big Cottonwood at 9:30 am. Leader, Dale Green, 277-6417.

JANUARY 19  
Sunday  
ADVENTURE CROSS-COUNTRY TOUR. Organized by Ogden Sierra Club. Intermediate. North Slope Ben Lomond. Meet at Mt Ogden Park, 8 am. Dick Conn, leader, 621-8292 or 777-7215.

JANUARY 19  
Sunday  
WMC/TIMBERLINE BEGINNER TOUR. Call Timberline for details, 466-2101.

JANUARY 24-26  
Fri. - Sun.  
LODGE OPEN. Hosted by Del and Carol Wiens, 272-3182.

JANUARY 25  
Saturday  
MOONLIGHT TOUR--LAKE SOLITUDE FROM BRIGHTON COUNTRY STORE--BEGINNER. Meet at mouth of Big Cottonwood at 6 pm. The lodge will be open for overnights. Leader, Dwight Nicholson, 359-6178.

JANUARY 25  
Saturday  
AVALANCHE COURSE. The annual avalanche safety course will take place at Zion Lutheran Church beginning at 8 am. The morning session will include two films and slides, along with discussion of avalanche conditions, avoidance, and rescue. After lunch we will adjourn to a suitable location to practice rescue techniques. The fee for the course is \$2.00 to pay for literature and to help the ski touring fund. For details, call Dwight Nicholson, 359-6178.

JANUARY 25  
Saturday  
TIMBERLINE NORDIC SKIING CLINIC. FREE. Call Timberline for details, 466-2101.

JANUARY 25  
Saturday  
CARDIFF FORK NORDIC TOUR. Registration is required. Call leader, Jesse May for details, 581-1296 or 581-6855.

JANUARY 26  
Sunday  
RED PINE TO WHITE PINE TOUR. This is a fairly long tour and it has some steep sections on the ridge between Red and White Pine. You must be able to handle yourself well on the descent. Register with leader, Pat Hovingh, 359-4791.

JANUARY 26  
Sunday  
WINTER SOCIAL. Gale and Ann Dick will host the second winter social of this season, starting at 5:30 pm. The address is 1377 Butler Avenue, phone 359-5764. A nominal fee will be charged for supper and beverages are available. Join the Dicks for their yearly hospitality.

FEBRUARY 1  
Saturday  
NORDIC TOUR IN THE SOUTHWEST SECTION OF THE UINTAS. Possibly leaving from Kamas or Woodland area. Call leader, Jack Spear, 359-3667, for details.

FEBRUARY 1  
Saturday  
WOLVERINE CIRQUE FROM BRIGHTON (1,2). This is a nice, easy tour suitable for snowshoes or nordic skiers. Meet at the mouth of Big Cottonwood at 8:30 am. Leader, John Riley, 485-2567.

FEBRUARY 1  
Saturday  
TIMBERLINE NORDIC SKIING CLINIC. FREE. Call Timberline for details, 466-2101.

FEBRUARY 2  
Sunday  
WMC/TIMBERLINE BEGINNER TOUR. Call Timberline for details, 466-2101.

FEBRUARY 2  
Sunday  
ADVANCED TOUR. Register with leader, Dave Smith, 272-2354 or 466-6714.

FEBRUARY 8  
Saturday  
TIMBERLINE NORDIC SKIING CLINIC. FREE. Call Timberline for details, 466-2101.

FEBRUARY 8  
Saturday  
ALTA TO CATHERINE PASS (1,2). This is suitable for beginner snowshoers or nordic skiers. Meet at the mouth of Little Cottonwood at 8 am. Leader, Burt Janis, 278-7291.

FEBRUARY 8  
Saturday  
DESOLATION LAKE (2,2). This is a beginner to intermediate snowshoe or nordic tour. Meet at the mouth of Big Cottonwood at 8:30 am. Leader, Frank West, 1-225-5999.

FEBRUARY 9  
Sunday  
POSSIBLY MAJOR EVANS GULCH (3,5). This is an advanced tour, so registration with the leader is required. Leader, Gale Dick, 359-5764.

FEBRUARY 9  
Sunday  
SILVER FORK NORDIC TOUR--INTERMEDIATE. Meet at the mouth of Big Cottonwood at 9 am. Leader, Don Coleman, 486-7796.

- FEBRUARY 9  
Sunday  
WINTER SOCIAL. Sally and Gordie Olsen are having this winter social, a first time for them, beginning at 5:30 pm. The address is 5797 So. Beaumont Drive (1740 East). To get into their neighborhood, turn south off 5600 So. Their phone is 277-4179. Supper will be served for a nominal fee and drinks are available at cost.
- FEBRUARY 15  
Saturday  
TIMBERLINE NORDIC SKIING CLINIC. FREE. Call Timberline for details, 466-2101.
- FEBRUARY 15  
Saturday  
TONY GROVE IN LOGAN CANYON. If you have wanted to get out of the Wasatch and do a fine nordic tour; this is it! It is a 7 mile gradual ascent, then an easy coast back if the snow is right. Call leader, Yukio Kachi, 466-8418, for details.
- FEBRUARY 15  
Saturday  
SCOTTS PASS VIA MILL F NORTH FORK--INTERMEDIATE NORDIC TOUR. Meet at the mouth of Big Cottonwood at 8 am. Leader, Bill Rosquist, 295-0458.
- FEBRUARY 16  
Sunday  
WMC/TIMBERLINE BEGINNER NORDIC TOUR. Call Timberline for details, 466-2101.
- FEBRUARY 16  
Sunday  
BROADS FORK SNOWSHOE TOUR. This is a strenuous snowshoe tour with some worthwhile payoffs for your labors. Meet at the mouth of Big Cottonwood Canyon at 8 am. Leader, Elmer Boyd, 583-2292.
- 

#### VANISHING SPECIES:

The California Condor is close to extinction.

The last of the American Paraquets was observed in a cypress grove in South Carolina in 1904.

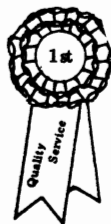
The last of the Passenger Pigeons died in the Cincinnati Zoo in 1914.

The last of the Heath Hens was seen in Martha's Vineyard in 1932.

The last of the Golden Eagles died from eating poisoned coyote bait in the Book Cliffs area of Utah.

(Four of the above statements are facts. The fifth may be a fact within a few years)

We commend the Conservation Committee for its effort to protect wildlife resources.



SAM ALLAN - 487 8901

**BLUE RIBBON** REALTOR

2870 EAST 3300 SOUTH •

# grand canyon

## grandview trail



by Mary Manley

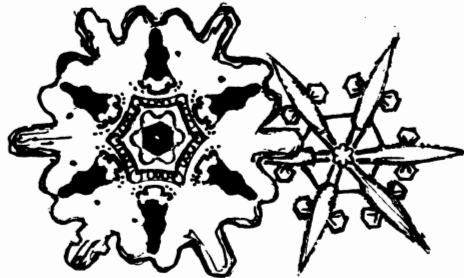
We left Salt Lake at 6 pm (AMAZING!) and headed south in Craig's VW bus. After several gas and potty stops, we wound up at Lee's Ferry campground at 2:30 am. The next morning we were on our way to meet the Hance Trail group at the Grandview trailhead. We were unable to get hiking permits for Thanksgiving Day due to a mix-up in our reservations which turned out to be for Friday. After a few minutes of indecision, we took off for a day hike down the Kaibab Trail. Craig, Don, Marlene and Mary took it easy, hiking about five miles down and then returning to the top. Mike, Paul and Harry were feeling energetic so they went all the way down to Phantom Ranch and then returned via the Bright Angel Trail to the Bright Angel Lodge Bar. The rest of us went out to eat at the Moqui Lodge where we had some pretty good food except for Don who insisted on eating his "C" ration turkey loaf in the restaurant. We all spent the night at the Ten-X Forest Service campground after hauling Mike and Paul out of the bar.

The next morning was cold with frosty sleeping bags and tents. After checking in at the Visitors Center hiker registration, we finally got started on the Grandview Trail at 11 am. This is an impressive trail when you think of all the labor that went into cutting the switchbacks and in just finding a way down the canyon wall. The trail was built for a mining enterprise which luckily did not work out. There are several mine shafts and remnants of buildings on the Horse-shoe Mesa where we camped. A rather leisurely afternoon was spent eating lunch and looking around. Dinner was served at 5:00 with happy hours before and after and Don with his ever present bottle of Scotch. Since no open fires are allowed, the six of us huddled around a stove and wrapped up in Don's Space Blanket. Hot Wylers and vodka made the rounds, topped off with popcorn supplied by Marlene. By 8:30 everyone was in bed because it was too cold to stay up. The most impressive part of the evening was watching a beautiful full moon come up over the canyon rim. Next morning was bright and clear as we had breakfast and packed for the return trip. The hike back out was not nearly as strenuous as we expected but the cold beer back at the bus still tasted great. We went back to the Visitors Center to check out and get cleaned up, and after a quick stop at the store for some goodies, we were on our way home.

Thanks go to Craig for providing transportation and Mike for organizing the trip. Those who went along for the ride deserve a little credit too.

Trip Leader: Mike Omana. Participants: Marlene Austin, Mary Manley, Craig Marken, Don Sigler, Paul Horton, Harry Todd, Oliver Eaugeras & wife.

## Winter Socials



After the hectic holiday season has ended, the series of winter socials is an excellent chance to relax, either after an active day outdoors or an indoor routine. Everyone is welcome, not just skiers. Join old friends and meet new ones in a casual atmosphere of shared good food, drink and company. A simple but hearty supper is served for a nominal fee and beer, wine and soft drinks are available at cost.

While reservations are not necessary, it will be helpful to the hosting people if you can arrive reasonable promptly if you are having supper. Drink and conversation are always available throughout the evening.



*whoops!*

CORRECTION

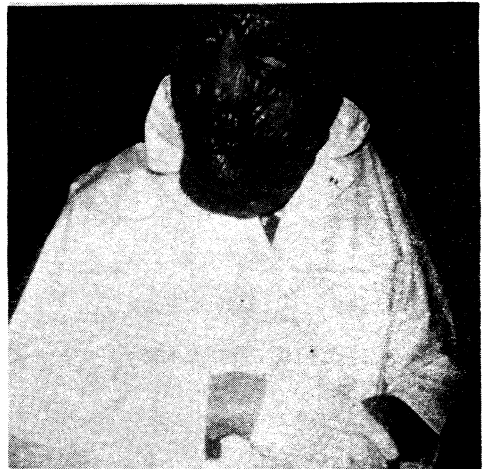
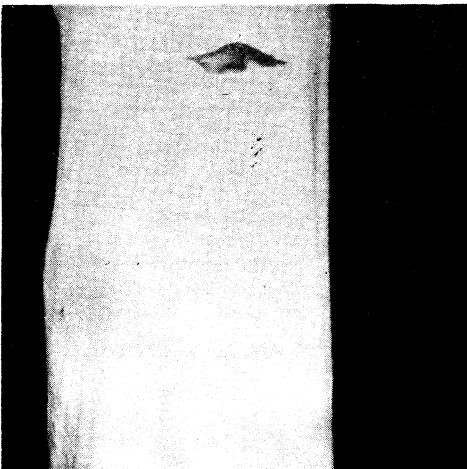
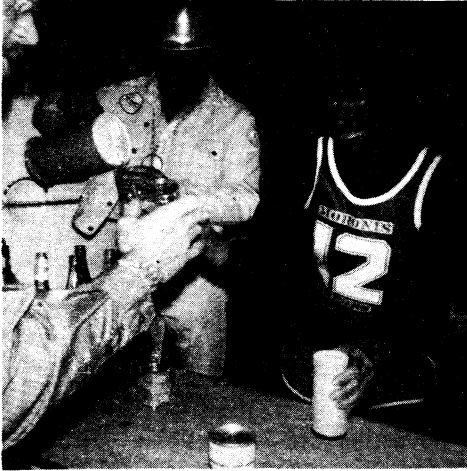
Grand Canyon River Trip.

The dates quoted in the December RAMBLER are wrong. The participants on this exciting trip will leave on the evening of Friday, April 11th and return the evening of Sunday, April 20th. See details and reservation information in February RAMBLER.





Halloween Party Pics



A P P L I C A T I O N   F O R   M E M B E R S H I P

WASATCH MOUNTAIN CLUB  
3155 Highland Drive  
Salt Lake City, Utah 84106

NAME (Print) \_\_\_\_\_ Telephone \_\_\_\_\_

Name of spouse (only if spouse wants membership also) \_\_\_\_\_

Address \_\_\_\_\_ ZIP \_\_\_\_\_

Occupation (Optional) \_\_\_\_\_

I hereby apply for membership in the Wasatch Mountain Club and enclose \$ \_\_\_\_\_ as my annual membership dues for the year \_\_\_\_\_, \$ \_\_\_\_\_ of which is for a subscription to the Rambler for the year and \$4.00 entrance fee. (From January to August, dues are \$6.00 of which \$5.00 are for a Rambler subscription - Spouse dues (non-subscribing) are \$3.00 - plus \$4.00 entrance fee. From September to December, the dues are \$3.00, of which \$2.50 are for a Rambler subscription -- Spouse dues (non-subscribing) are \$1.50 - plus \$4.00 entrance fee.) I (do) (do not) desire to receive the Rambler.

I have attended two Club activities in the past 12 months as required for membership such as hikes, ski tours, camping trips, rock-hound trips or work parties and have been recommended by two trip leaders who are Club members. Social events such as lodge parties, winter socials, etc. are not activities qualifying for membership. I agree to abide by all the rules and regulations of the Club as specified in the Constitution and Bylaws as determined by the Board of Directors.

I am specifically interested in the items checked below:

Hiking \_\_\_\_\_ Ski Touring \_\_\_\_\_ Boating \_\_\_\_\_ Mountaineering \_\_\_\_\_ Caving \_\_\_\_\_  
Cycling \_\_\_\_\_ Conservation \_\_\_\_\_ Writing and Editing \_\_\_\_\_ Organizing social  
activities \_\_\_\_\_ Lodge Work \_\_\_\_\_ Photography \_\_\_\_\_ Other \_\_\_\_\_

**CLUB ACTIVITIES ATTENDED:**

1. _____	Date _____	Signature of recommending Trip Leader _____
2. _____	Date _____	Trip Leader _____

(Note: The signature of a Director may be substituted for one Trip Leader.)

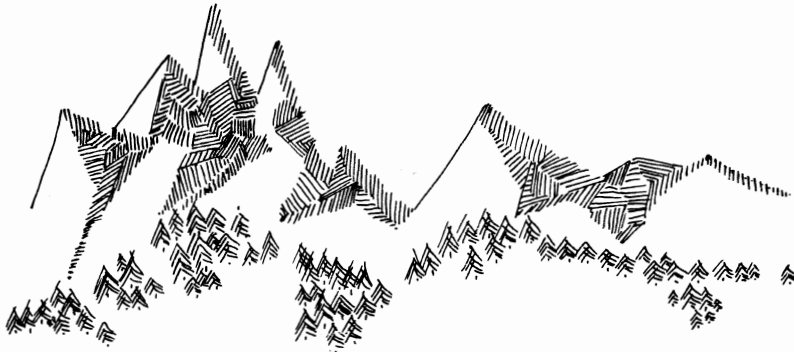
\_\_\_\_\_  
Signature of Applicant

# nomination banquet

Our annual more formal banquet will be held at the Four Seasons west, 3618 Highland Drive. A social hour, beginning at 6 pm will be followed by dinner at 7 pm. The price of \$7.50 per person includes set-ups, dinner, dancing, and gratuities. BYOL.

This is the occasion to meet the candidates for next year's board of directors, as well as special guests of the club. Annual awards will be presented. Plan to stay for dancing and conversation after dinner.

Reservations are mandatory and binding. The deadline is Wednesday, January 8th. Please call Karen Weatherbee, home 487-9715 or work 328-5165.



## SKI TOPICS

Free Lectures  
Every Tuesday Evening

CROSS-COUNTRY  
SKIS AND SKIING

7:00 p.m.

**Timberline Sports**

3155 Highland Drive S.L.C. 466-2101

WE ALSO CARRY A COMPLETE  
LINE OF CROSS-COUNTRY SKI EQUIPMENT.

WASATCH MOUNTAIN CLUB, INC.

3155 Highland Drive/Salt Lake City/Utah 84106

Application to mail  
at 2nd class postage  
rate is pending at  
Salt Lake City, Utah.

BOARD OF DIRECTORS

DALE GREEN	PRESIDENT	277-6417
BETTY HENDRICKS	SECRETARY	487-1929
MEL DAVIS	TREASURER	278-3174
KEN McCARTY	BOATING	466-3297
MIKE OMANA	CONSERVATION	561-4537
KAREN WEATHERBEE	ENTERTAINMENT	272-2624
BILL ROSQVIST	HIKING	295-0458
J DEWELL	KAYAKING	295-2754
PHIL NELSON	LODGE	581-9205
MARLENE AUSTIN	MEMBERSHIP	355-4726
PAUL HORTON	MOUNTAINEERING	328-9486
MARY WELCH	PUBLICATIONS	272-6143
DWIGHT NICHOLSON	SKI TOURING	358-6178