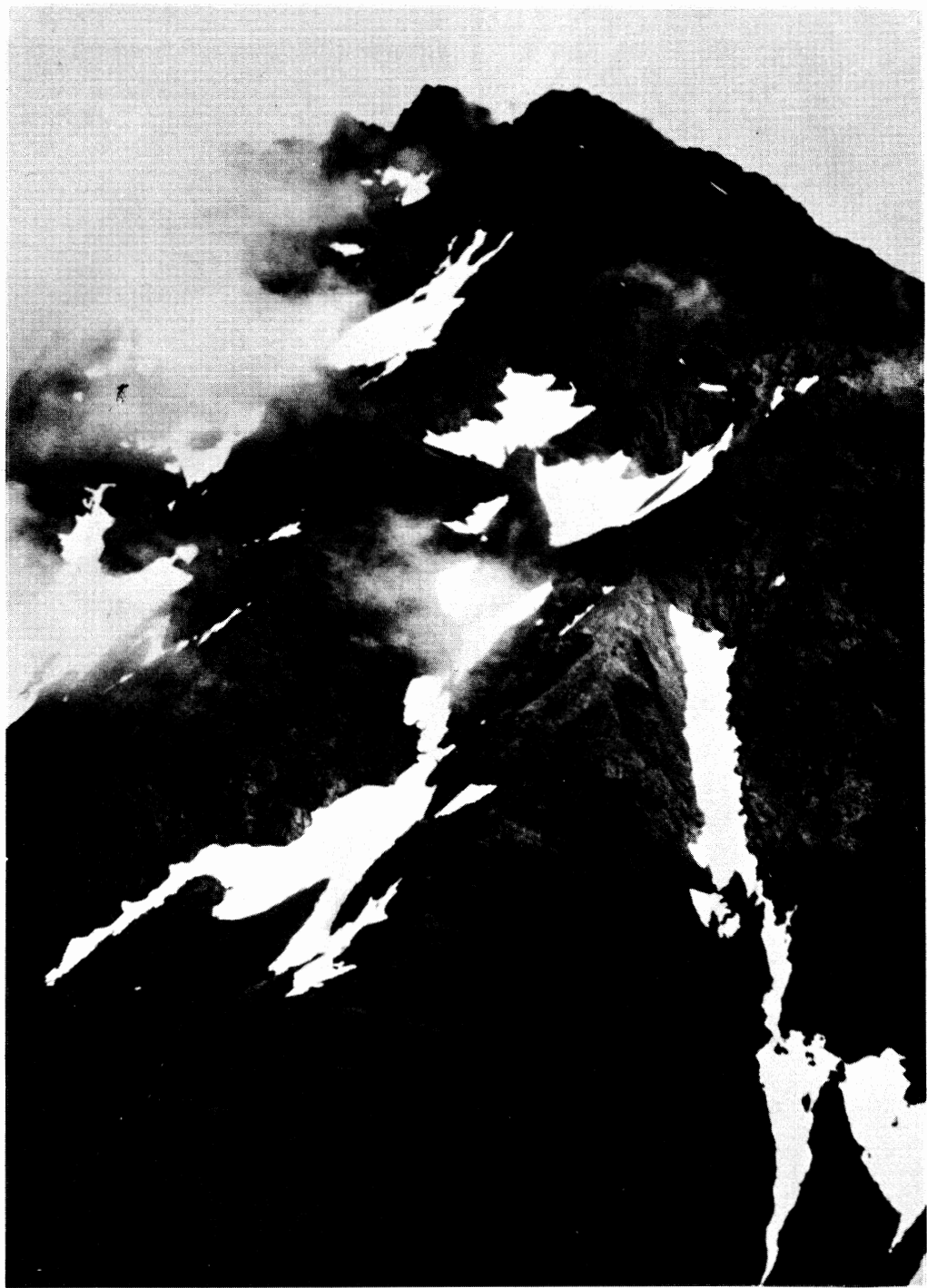


The Rambler

JULY 1975 Vol. 52, Issue 7



Official publication of THE WASATCH MOUNTAIN CLUB Salt Lake City, Utah

news and notices

The "No dogs allowed in the canyons" rule is being strictly enforced. One member was fined \$20 for having a dog inside his vehicle!

Cover Photo: Eagle Peak,
Admiralty Island, Alaska.
From a slide by Bob Everson,
taken in August 1973.

thanks

...to George and Georgia Randall
and Stu Ogden for mailing the
June RAMBLER.

...to Mike Treshow and Adrian Stevens
for typing and graphics help.

THE RAMBLER is published monthly
by the Wasatch Mountain Club, Inc.,
3155 Highland Drive, Salt Lake City,
Utah 84106. Subscription rates are
\$5.00 a year. All correspondence
regarding changes of address, mail-
ing, etc. may be directed to the
Membership Director at the address
above. Second Class Postage paid at
Salt Lake City, Utah.

rambler

Deadline

...for AUGUST is July 15,
Tuesday. Please have your
articles and schedules typed
and mailed to:

ATTENTION: RAMBLER EDITOR
Wasatch Mountain Club
3155 Highland Drive
Salt Lake City, Utah 84106

The Wasatch Mountain Club is governed by a Board of Directors - 13 representatives elected by the membership. Through the courtesy of Timberline Sports, our mail is sent to their address, 3155 Highland Drive, for collection only. The Club's telephone is located at O'Dell's Shoe Repair Shop, 425 South 8th West. This phone is maintained as an answering service only by Life Members 'Pete' (O'Dell) Peterson and wife 'Pinky'. They take time out from their work to answer the phone and relay incoming messages to the proper Director. The Petersons do not hold any office, or attend Board meetings or are they informed by the Board of official actions. If a trip leader cannot be contacted or is not specified, call the Director of that department for information. The Board strongly desires to hear comments, suggestions, inquiries, and criticisms concerning the operation of your Club. Please feel free to phone any Director or write to the President. Names will be withheld upon request, but anonymous letters will be disregarded.

Mountain Club business is conducted only on the first and third Wednesdays of each month. At that time, and only at that time, is the mail opened, new membership applications voted on, dues payments recorded, address changes made, and all other business requiring board action conducted. All board members cannot attend all board meetings and although an effort is made to fill in during a member's absence, some business is held for action until the next meeting.

CLUB ACTIVITIES 1975

REGISTRATION INFORMATION: Registration is generally not required for members participating in easy or intermediate hiking (rating below 7.0). Unless specifically stated, advanced hikes (rating above 7.0) require registration with the leader. Adequate equipment is an absolute must. You cannot participate in these events if you have not shown your ability on other hiking activities and if you do not have adequate

and well broken in boots with good Vibram type soles and suitable protective clothing. Special equipment like an ice axe etc. may also be specified and you are required to be able to handle such equipment. Remember that these restrictions are set for your own safety and that of your fellow members. For rules regarding participation of children, consult the May Rambler 1974.

JULY 3
Thursday

EVENING CLIMBING AT STORM MOUNTAIN. Take your chances on beer being available.

JULY 3
Thursday

"KNOW THE WASATCH TRAILS" Thursday evening hike. Lake Blanche Trail. Meet at 7:00 p.m. in the Storm Mountain Reservoir parking lot. Drive 3.0 miles up Big Cottonwood Canyon from Wasatch Blvd. through the narrow rock gap and across the bridge. Turn left and follow the dirt road to the parking lot.

JULY 4-6
Fri.-Sun.

MOUNTAINEERING HIGH CAMP - Hanging Canyon in the Tetons. This will be our first trip to this beautiful canyon northwest of Jenny Lake. The approach is short and numerous climbs are available, including moderate Cube Point and advanced Symmetry Spire. Hikers are welcome with Mt. St. John and The Jaw as interesting possibilities. Ice axes are required. Leader, John Gottman. Work phone: 328-8066, ext. 359. Home phone: 359-4693.

JULY 4
Friday

4TH OF JULY FAMILY POTLUCK. Bring the kids to the Lodge for the annual flag-raising pandemoniacal potluck. Hike for the older kids at 9:30 a.m. Hoppets' parade after the noon repast. Bring enough for yourselves times three, plus plates, utensils, beverage, and balloons. Hosts are Erik and Alex Nelson (age 4 and 5). Phil and Sally are older; phone 581-9205.

JULY 5
Saturday

ALEXANDER BASIN TO BOWMAN FORK. El. 10,000 Rating 7.0. A very enjoyable intermediate hike up Alexander Basin around the flank of Gobblers Knob and then down Bowman Fork. Meet at The Movie at 8:00 a.m. Leader: Bob Weatherbee, 272-5510.

JULY 5
Saturday

LAKE CATHERINE FROM THE LODGE. El. 9,600 Rating 2.5. This is an enjoyable hike suited for families. The trail is easy and scenic.

Meet at the mouth of Big Cottonwood Canyon at 8:30 a.m. Leader:
Elmer Boyd, 583-2292.

JULY 5-6
Sat.-Sun.

LODGE OPEN. Call Diz Mays for details, 582-3818.

JULY 6
Sunday

AMERICAN FORK TWINS. El. 11,489 Rating 7.5 The route will follow up Albion Basin to Mt. Baldy, then to Totally Hidden Peak and finally along the ridge to the Twins. The final ridge is exposed, so be prepared! Meet at the mouth of Little Cottonwood at 8:30 a.m. Leader: Oscar Robison, 278-5009.

JULY 9
Wednesday

LOWER SALMON KAYAK. Contact Mike Gallagher, 1310 Grape St., Denver, Colorado, 1-303-333-8085.

JULY 10
Thursday

EVENING CLIMBING AT STORM MOUNTAIN.

JULY 10
Thursday

"KNOW THE WASATCH TRAILS," a digression from hiking for a nature walk. Prof. Mike Treshow, Botany Dept., U. of U., will describe the common plants and flowers in Butler Fork. Meet at 7:00 p.m. in the Storm Mountain Reservoir parking lot. See July 3 for directions.

JULY 12
Saturday

SUNSET PEAK. El. 10,200 Rating 3.5 We'll go up the Brighton Lakes Trail past Lakes Mary, Martha and Catherine to Catherine Pass and then right up the ridge to the peak. Meet at the mouth of Big Cottonwood at 9:00 a.m. Leader: Clint Lewis, 295-8645.

JULY 12
Saturday

JHCOB WALL EXPERIENCE CLIMB. This area provides four to five pitch climbs with F5, F6 and F7 routes. Be prepared for anything including nailing. Register with the route pointer out, John Gottman: work phone 328-8066, ext. 359 and home phone 359-4693.

JULY 12
Saturday

MT. RAYMOND FROM HIDDEN FALLS. El. approx. 10,000 Rating 8.5 Meet at the mouth of Big Cottonwood at 8:00 a.m. Leader: Elmer Boyd, 583-2292.

JULY 13
Sunday

PFEIFFERHORN. El 11,326 Rating 10.0 The route this year will head up Red Pine and return via Hogum. The number of people will be limited. Call the leader for registration and details. Leader: Milt Hollander, 277-1416.

JULY 13
Sunday

HONEYCOMB CLIFFS. El. 10,000 Rating 3.0. The route will follow the Twin Lakes trail and return either by Honeycomb Fork or Silver Fork. Meet at the mouth of Big Cottonwood at 8:30 a.m. Leader: Clint Lewis, 295-8645.

JULY 17
Thursday

EVENING CLIMBING AT STORM MOUNTAIN.

JULY 17
Thursday

"KNOW THE WASATCH TRAILS" Thursday evening hike. Greens Basin. Drive 9.0 miles up Big Cottonwood Canyon to the "Meeting of the Glaciers" sign on the north side. Leader: Dale Green, 277-6417.

- JULY 18-20
Fri.-Sun. TIMPANOGOS LOOP BACKPACK. Dale Green is leading this pleasant beginner to intermediate backpack tour which will begin at the Lodge and end on the Alpine-Provo scenic loop. Call the leader for details, 277-6417.
- JULY 18-19
Fri.-Sat. LODGE OPEN. For details call Diz Mays, 582-3818.
- JULY 19
Saturday BALD MOUNTAIN IN THE UINTAS. Rating 3.0 See three river drainages and numerous lakes from the summit. It's an easy hike after a pleasant drive up Mirror Lake Road. Call the leader by July 17th. Leader: Mike Hendrickson, 467-4117.
- JULY 19
Saturday RED PINE LAKE. Rating 5.0 Meet at the mouth of Little Cottonwood at 8:00 a.m. and pool cars to the trailhead at White Pine Canyon. Kids like this one. Leader: Fred Bruenger, 485-1423.
- JULY 19
Saturday MOONLIGHT HIKE TO GRANDEUR PEAK. Rating 4.5 Very popular evening hike via Church Fork. Watch the sunset and see the lake turn from silver to gold. Bring flashlights. Meet at The Movie, 3920 So. Wasatch Blvd., at 7:30 p.m. Leader: Chuck Mays, 582-3818.
- JULY 19
Saturday CLIMBERS AND HIKERS KEGGER. This will be a purely social event put on by the Climbing and Hiking Directors and hosted by Mike Treshow, 1978 Millbrook Rd. (3610 South), 467-1022. Everyone is welcome. Plan on arriving early (7:30-8:00) and swimming. A cost-recovery fee for beer and munchies will be charged.
- JULY 20
Sunday RED BALDY. El. approx. 11,170 Rating 8.5 This is a good intermediate hike via White Pine Canyon. After the summit you can take a dip in White Pine Lake. Total time involved is about 8 to 9 hours. Meet at the mouth of Little Cottonwood at 8:00 a.m. Leader: Karl Lagerberg, 581-9826.
- JULY 20
Sunday GOBBLERS KNOB. Pleasant and relatively easy hike starting from the mouth of Butlers Fork, thence to the saddle between Mt. Raymond and Gobblers Knob. We may spot a car in Millcreek Canyon for those who abhor back-tracking and want to descent via an alternate route. Meet at the mouth of Big Cottonwood Canyon at 8:30 a.m. Leader: Jackie Thomas, 487-9340.
- JULY 22-27
Tues.-Sun. BACKPACK IN THE WIND RIVERS. Cast flies in the high mountain country. See the beautiful Wind Rivers from within. Route will take either the New Fork Lake or Elk Heart Park depending on size, experience, and vigor of the group. Register not later than July 15th with leader Bill Yates, Brigham City, 1-723-3853, or Sam Allan, 561-1136. Meet at the Green River Lakes Campground on the evening of July 22nd. Return will be July 27th.
- JULY 24-27
Thurs.-Sun. MOUNTAINEERING HIGH CAMP. Temple area of the Wind River range. This will be another all-around trip including difficult climbing possibilities on Haystack, Steeple, and Temple; moderate climbs on

Haystack; hikes on Temple and East Temple; and fishing in area lakes. Call our leader, Titanic Paul Horton, at 328-9486 for more information.

JULY 24
Thursday

SUNDIAL. El. 10,150 Rating 8.5 This hike is of intermediate difficulty but involves some exposed scrambling near the top. Or, if you prefer something less difficult, you can stop at Lake Blanche, rating 5, and enjoy the view of the peaks that surround the basin. Meet at the mouth of Big Cottonwood at 8:00 a.m. Leader needed. Call Sam Allan, 561-1136.

JULY 24
Thursday

EVENING CLIMBING AT STORM MOUNTAIN. Take your chances on beer being available.

JULY 24
Thursday

"KNOW THE WASATCH TRAILS" Thursday evening hike. Broads Fork. Meet at 7:00 p.m. in the Storm Mountain Reservoir parking lot. See July 3 for directions. Leader: Dale Green, 277-6417.

JULY 26-27
Sat.-Sun.

WESTWATER RIVER TRIP - Advanced. This annual kamikaze run through Westwater Canyon will leave from the Club's boathouse on 7th East (154 South) by Continental Trailways bus on Saturday afternoon, July 26th, at 2:30 p.m. A side trip into Arches may be made en route to the put-in, and the river will be run Sunday morning. Extremely high water is expected this year so only experienced river runners need apply. For reservations send a \$10 deposit to Bob Weatherbee, 1490 Sandpiper Way, No. 55, Salt Lake City, Utah 84117. For further information call him at either 272-5510 (home) or 363-1454 (office).

JULY 26-27
Sat.-Sun.

ALPINE CANYON KAYAK TOUR. This is high water for the Snake. If Alpine is unsuitable, we will investigate the Hoback or Greys River. Call Brad Rich at 583-2023 (home) or 532-5444 (work).

JULY 26
Saturday

SPANISH FORK PEAK. El. 10,500 Rating 9.0 Meet at Fashion Place Mall near Auerbach's at 7:00 a.m. We will pool cars to the trailhead in Spanish Fork Canyon. Then we will ascend the South Ridge and have lunch on the summit, thence down a snowfield to the cirque on the East side at the head of Maple Creek. We will follow the creek northerly to Maple Canyon picnic grounds where we will have wisely spotted a couple of cars to carry us back to the starting point. Leaders: Frank West and Sam Allan. Call 561-1136.

JULY 27
Sunday

WHITE PINE LAKE. Rating 5.0 Cool off at the foot of a glacial moraine. Soak your tired feet in icy White Pine Lake. This is a good Sunday hike for families. This area borders the proposed Lone Peak Wilderness Area. See it and draw your own conclusions as to its wilderness potential. Meet at the mouth of Little Cottonwood at 9:00 a.m. Leader: Joyce Sohler, 272-2624.

JULY 31
Thursday

EVENING CLIMBING AT STORM MOUNTAIN.

- JULY 31
Thursday "KNOW THE WASATCH TRAILS" Thursday evening hike. Lake Solitude. Meet at 7:00 p.m. at Brighton in Big Cottonwood Canyon. Park on the right side of the road just after entering the one-way loop road. Allow extra time to drive up the canyon. Leader: Dale Green, 277-6417.
- AUGUST 2-4
Sat.-Mon. LODORE CANYON, GREEN RIVER. Intermediate. Leaders: Marlene Austin and Craig Marken. Register by sending a \$10 deposit to Marlene at 620 5th Ave., Apt. #1, Salt Lake City 84103. Phone 355-4726 (home) or 581-6080 (work). In the Ogden area, phone Craig at 399-9714.
- AUGUST 2-4
Sat.-Mon. GATES OF LODORE KAYAK TOUR - same time as the rafts. Marty McKnight is the organizer; call her at 355-3810.
- AUGUST 2
Saturday TOKEWANNA PEAK. El. 13,175 Rating 9.0. This is a good chance to get above 13,000 feet. The hike starts about 9,500 feet and then up to the peak. Since this is a high altitude trip, altitude sickness may be encountered. Meet at the K-Mart parking lot by the Regency Theatre at 5:00 a.m. Leaders: Fred and Eveline Bruenger, 485-1423.
- AUGUST 2
Saturday DESOLATION LAKE via GUARDSMANS PASS. El. 9,240 Rating 3.0 A variation of the usual Desolation Lake hike, the route will follow the ridge from the pass to the lake. Meet at the mouth of Big Cottonwood at 8:30 a.m. Leader: Ann Wennhold, 466-3300.
- AUGUST 3
Sunday WHITE BALDY. El. 11,321 Rating 8.5 White Baldy sits on the ridge in upper Red Pine and provides an excellent hike as well as great scenery. Meet at the mouth of Little Cottonwood Canyon at 7:30 a.m. Leader: Andy Schoenberg, 466-6531.
- AUGUST 3
Sunday TWIN LAKES KIDS' HIKE. El. 9,600 Rating 2.0 This is an excellent children's hike as well as for aspiring adults. Meet at the right hand end of the Silver Lake parking lot (across from the Brighton Store) at 8:30 a.m. Leader: Sally Nelson, 581-9205.
- AUGUST 3
Sunday LAKE BLANCHE TO MINERAL FORK. El. 9,800 Rating 7.5 This hike will follow the usual route to Lake Blanche, then up into a hanging canyon to the east of Sundial, and finally up to the ridge between Mill B and Mineral Fork. The return will be down Mineral Fork. Meet at the mouth of Big Cottonwood at 9:00 a.m. Leaders: Kermit and Marilyn Earle, 466-3132.
- AUGUST 7
Thursday EVENING CLIMBING AT STORM MOUNTAIN.
- AUGUST 7
Thursday "KNOW THE WASATCH TRAILS" Thursday evening hike. Bowman Fork. Meet at 7:00 p.m. in the Upper Terraces Picnic Area. Drive 4.6 miles up Millcreek Canyon (3800 South), turn right at the Terraces sign and up the road for about 1/4 mile. (Because of vandalism, the Forest Service sometimes closes this small road. Park alongside the main road if so.) Leader: Dale Green, 277-6417.

AUGUST 8-19
Fri.-Tues.
week
MIDDLE FORK SALMON KAYAK TOUR. Meet at Dagger Falls Friday night, August 8th, shuttle Saturday, and put in Sunday August 10th. We will spend 10 days on one of the finest rivers in North America. Confirm your intentions early, or run your own shuttle. Jim Byrne, leader; 582-5631.

AUGUST 9-10
Sat.-Sun.
THAYNE CANYON TO NEFF CANYON OVERNIGHTER. El. 8,600 Rating 6.0 This should prove to be a fun trip, with the campsite possibly on the ridge area between the two canyons. Meet at The Movie (39th So. and Wasatch Blvd.) at 12:00 p.m. Registration with the leader by Wednesday the 6th is required. Leader: Bob Weatherbee, 272-5510.

AUGUST 9
Saturday
LODGE OPEN. Call Diz Mays, 582-3818.

AUGUST 9
Saturday
BRIGHTON RIDGE RUN. El. 10,795 Rating 8.0 This peak-bagging trip starts as Snake Creek Pass and then runs the ridge to Pioneer Peak, Sunset Peak, Mt. Tuscarora, Mt. Wolverine and finally Mt. Millicent. Meet at the mouth of Big Cottonwood Canyon at 8:00 a.m. Leader: Ross Pearson, 486-0455.

AUGUST 9
Saturday
MT. MAJESTIC. El. 10,720 Rating 4.5 This is the other peak in the Brighton area and provides a little better and easier going. Meet at the mouth of Big Cottonwood Canyon at 9:00 a.m. Leader: Jackie Thomas, 487-9340.

AUGUST 10
Sunday
MT. WOLVERINE AND TUSCARORA. El. 10,700 Rating 6.0 If you like a hike involving beautiful lakes on the way up and on the way down and in between, nice peaks and beautiful scenery, then this is the hike for you. Meet at the mouth of Big Cottonwood at 7:30 a.m. Leader: Marty Snyder, 262-4695.

AUGUST 10
Sunday
BOX ELDER PEAK. El. 11,101 Rating 9.0 This peak lies on the Wasatch Front between Lone Peak on the north and Timpanogos on the south. The route up will probably be from the east side and promises to be interesting. Meet at the Prudential Plaza parking lot (33rd South and State) at 7:30 a.m. Leader: Dave Hanscom, 487-6065.

AUGUST 14
Thursday
EVENING CLIMBING AT STORM MOUNTAIN.

AUGUST 14
Thursday
"KNOW THE WASATCH TRAILS" Thursday evening hike. White Pine - Red Pine Canyons. Meet at the "Y" junction at the mouth of Little Cottonwood at 7:00 p.m. SHARP. Leader: Dale Green, 277-6417.

AUGUST 16-17
Sat.-Sun.
FAMILY RIVER TRIP. At this point it will be Fun on the Snake, but exact location will depend on water level, etc. and we don't know those details yet. Register by sending a \$10 deposit to Rick or Susie Williams, 185 Paradise Road, Summit Park, Park City, Utah 84060. Phone 1-649-9063.

AUGUST 21
Thursday

EVENING CLIMBING AT STONE MOUNTAIN.

AUGUST 23-24
Sat.-Sun.

ALPINE CANYON KAYAK TOUR. Call Dan Thomas for details,
561-8606.

AUGUST 23
Saturday

LODGE OPEN. Call Diz Mays, 582-3828.

AUGUST 30- SEPT. 1
Sat.-Mon.

ALPINE OR WESTWATER CANYON KAYAK TRIP.

AUGUST 30- SEPT. 2
Sat.-Tues.

HELLS CANYON, SHAKE RIVER (Advanced).

OCTOBER 11-12
Sat.-Sun.

WESTWATER (Advanced).

Thanks.-- Many thanks to Charlie
and Emily Hall for donating their
old Ramblers. Anyone who
can help us donate a car, etc.,
please call them at 582-3828.
Green.

Timber Haus

Ski & Sport

Park City
&
Snowbird

Everything for the: Camper
Hiker
Skier

From the Prez

by Dale Green

Free Ramblers

From the nature of my phone calls, a large percentage of our members who want to acquaint friends with the WMC are not aware that we will send free Ramblers for two consecutive months to prospective members upon request to club headquarters (363-7150) or Judy Weatherbee, Membership Director (272-5510). Ramblers may also be purchased for 50¢ each at Timberline Sports.

Search and Rescue

All populous counties in Utah have officially organized "Jeep Fosses," etc. that are more or less legally charged with all search and rescue operations within their jurisdiction. When a rescue is in progress, these organizations usually will not accept help from outsiders, no matter how qualified the outsider may be. "Interfering" by giving unwanted help in a rescue can result in arrest. Search missions require more people so sometimes help is accepted or requested but often only after the official team has been unsuccessful. For these reasons, the Wasatch Mountain Club does not maintain a list of persons capable of providing search and rescue help. Therefore, if a search or rescue becomes necessary on any outing, the first thing to do is to call the local county sheriff. After this is done, you should take any action that any reasonable person would take to assist the accident victim or search for lost people, unless directed otherwise, and until someone from the sheriff's office arrives and takes charge. From then on, follow the directions of the person in charge.

Old Ramblers

The Board of Directors thanks Chauncey and Emily Hall for their donation of about 10 years of old Ramblers. We still need more, especially from the 1930's, 40's and early 50's. We realize they have great sentimental value, but we should like to Xerox them for our files, or better yet, keep the originals and give you the copies. Paul Horton has had about 9 years bound in 3 volumes and more are soon planned.



After 2 hospital stays (car accident)
I have to sell:

as good as new: Life jacket, life
vest, helmet, ground cloth, air
mattress, sleeping bag, ammo box,

heavy nylon bib type rain pants and
coat (40-42), 2 square dance dresses.

Call: Aerie Hindbo Wright - 467-4342

RANCH - THE WHOLE

May 10-11

by Terry Burns

It was a warm May night as 20 River rats lay under the stars near Dewey Bridge looking anxiously up awaiting morning and their first taste of white water after a long, cold winter.

It took a long time Saturday morning to pack gear, pump up rafts, prepare a hearty breakfast and carry all the gear a quarter of a mile before the beginner rats were taught power strokes, back strokes and the supreme power of the Raft Captain. An hour downstream, beginner rats learned how to attack and defend through drenching water fights, which proved effective in "taking on" two motorized commercial rafts later. Saturday night we relived the day's events over drinks and snacks followed by a well-prepared steak dinner.

Sunday morning brought the white water at White Ranch, the only 3.0. rated rapid with a 10.0 hole. One raft found that hole which ate one river rat and threw two others out of the raft, but all survived thanks to those funny fat orange jackets. This raft was the only one of three that didn't hold religious services for Odin Sunday morning -- we will next time.

Trip Leader: Ken McCarty. Boat Captains: Karen Weatherbee, Craig Barker, and David Hart. Landlads: Joe and Marcia Walker, Erid Lorrison, Helen Moody, Gerald and Pat Poplar, Robyn Russell, Larry and Valerie Peterson, Robert and Susan Meyer, Larry Griffin, Constance Mackay, Hugh MacPherson, Bill Yates, and Terry Burns.



K. McCarty and B. Everson exploring new boating craft for the WNC



TRAIL GUIDES

Wasatch Trails \$1.50

HIGH UINTA TRAILS \$2.95

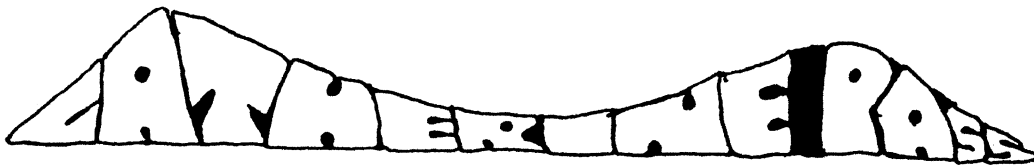
Cache Trails \$1.50

Wind River Trails \$2.95
postpaid from:

Wasatch Publishers, Inc.

4647 Idlewild Rd.

Salt Lake City, Ut. 84117



May 31

By Marcia Biddle

The weather was beautiful for this morning hike as 11 enthusiastic hikers started up the slope to Catherine Pass. There were some ground squirrels that came out of their holes in the snow to find out what was going on "upstairs."

When we reached the end of Lake Mary, a bit of entertainment was provided by a couple of members of the group who found it thrilling to do "somersaults" off the slope. Also, at this point, our group had diminished in size. There were some cases of sunburn and frozen feet because of the deep and wet snow, but we pushed on valiantly.

When we were almost to Lake Catherine, a small flat area was chosen as a good lunch site, and those who wanted to enjoyed some goodies. The desire was strong to push on, but good sense took hold, and it was decided that we could try for Catherine Pass another time when there would be less snow. So we headed back down to the cars and our dry shoes.

The hike was rewarding despite the discomforts encountered. It was exciting to hear the snow settle on a slope underneath our feet, and it was a thrill to see the snow-covered mountain slopes from such a height, especially for those of us who never experienced these things.

Participants: Trudy Healy, leader; George Healy; Karen George; Lawrence Vanderplas; Lew and Mike More ;Doug Stark; Marcia, Rose, Owen and Mark Biddle.

Reynolds Peak

On this beautiful spring day, 24 exuberant hikers tried their skills on Reynolds Peak (Kessler Peak was too snowy). The group found that the snow was in pretty good condition for hiking, and bravely trudged on. After a somewhat windy lunch on the peak, some of the hikers headed down by trail. Others found a good gliessade off the lower part of the peak. The hike also included the rescue of two ground squirrels who, because of the late snows, were starving.

Reynolds Hikers: Erin Flowers, Mac , John Mason, Mike Taylor, Walter R., Phil Southland, Jerry and Niki Horton, Denis Zwang, Peter Pruess, Karl Lagerberg, George Rich, George Nelling, David Moore, Bill and Pat Swander, Ruth Hogg, and Emily Hall, Sam Allen, Charley Swift, Joyce Sohler, Joan Clark, and leader, Mike Hendrickson.



May 15

Samuel L. Allan

The annual early season hike to the summit of Storm Mountain via Ferguson Canyon was made in its usual brilliance with frequent trail losses and course departures. But the event was worth much more than the effort expended.

Above the narrows, where the woods are lovely, dark, and deep, we came into much soft snow. But on the ridge it was firm and supported a tremendous cornice. We avoided the cornice and made our way to the summit, passing en route a couple of snow tigers who had climbed Stairs Gulch the night before using ice axes and crampons. We failed to get their names but envied them their courage and stamina. They told us that six avalanches had occurred during their ascent to the summit.

While we were on the ridge, a cornice broke off for no apparent reason, which gave us good cause to be wary. After lunching on the summit, we descended rapidly via a good glissade route, thence to Canyon Inn for a bit of social activity to round out the day.

Participants were Trudy Healy, Neff Walker, Cheryl Walker, John Eason, John Gottman, Mike Hendrickson, and Sam Allan. Joyce Sohler, getting a late start, failed to tie in with the group and didn't quite make the summit.

B.Y.O.B.



"Bring Your Old Boots"

any kind, any style, any condition
and we'll buy them for

\$7 a pair

when you purchase any new hiking
boot in our store.

Vasque, Raichle, Molitor and Meindl
in sizes 4 to 16.

Please, only one trade-in per purchase.
Fair enough?

(Offer good thru July 31, 1975)



THE MOUNTAINEER

207 South 13th East
and now at
TROLLEY SQUARE
Phone 582-2338

THUNDER MOUNTAIN HIKE

May 17

By Bob Weatherbee

The Club's annual May assault on Mount Olympus started at 8:15 on a beautiful Saturday morning. Perhaps scared by the prospect of too much snow, as well as the relatively early hour, only seven hikers participated. This included several nonmembers, one a recent emigre from Massachusetts. In addition, the group had the opportunity to meet a long-term member who had just returned from a nine years' stay in Europe.

The lower part of the mountain was, as usual, hot and dry despite the early hour. Snow was encountered just above Blister Hill, but conditions were good and it caused few problems. The summit was reached at 11:30 and the group enjoyed a leisurely lunch in the extremely bright sunshine.

The descent off the top was quite fast due to the unusual snow depth. The snow was so inviting that several hikers attempted sitz glissading which, however, came to an abrupt halt when one hiker suffered an unexpected colectomy without benefit of anesthesia.

Erstwhile leader: Bob Weatherbee. Hikers: John Mason, Susan Roche, George Mooney, Randy Taylor, Karl Lagerberg, and Frank Deudas.

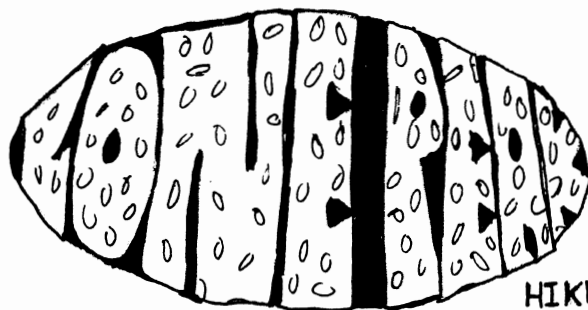
HIKING NOTES

by Mike Hendrickson

Due to late snow and a general lack of good weather, some hikes (Thunder Mountain, Deseret Peak) were cancelled, and numerous others had their destinations changed. Also, on the Lookout Peak hike, the group was denied access to the area by the local landowners.

But now that the good weather has arrived, the problems of the spring will hopefully be left behind, and the hiking season can get rolling again.

I should also like to thank the members of the hiking committee whose help, advice, and time have proven invaluable in setting up and instigating the hiking schedule. The hiking committee consists of: Richard Wagner, Don Colman, Elmer Boyd, Sam Allan, Oscar Robison, Peter Pruess, Paul Horton, Bill Rosqvist and Mike Maack.



Larry's
← Watermelon

HIKE

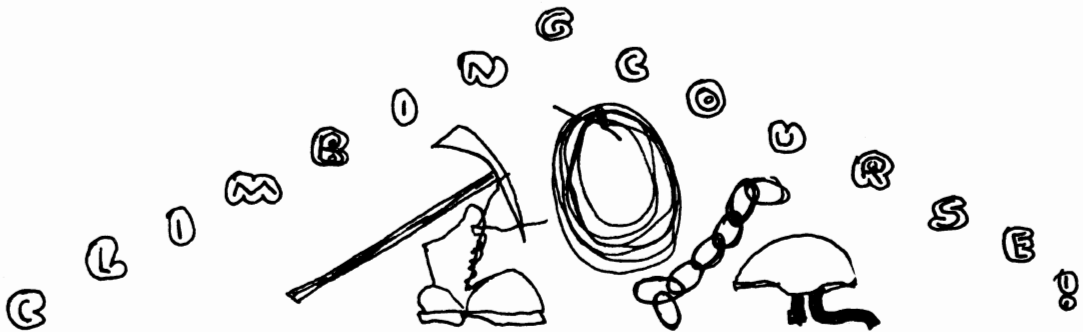
by Paul Horton

We had a great hike up Lone on June 15. The group of about 25 strong hikers enjoyed beautiful weather, hard-enough snow, and great views. Extra benefits included the watermelon brought up by Larry Swanson in record time, the party in the cirque, and cooling off in Mike Treshow's pool after the hot hike down. Summit hikers were: Walter Haas, John Mason, Renny Jackson, Hal Gribble, Jim Key, Roger Jackson, Eveline Bruenger, Mike Treshow, Lorie Cahn, John Gottman, Larry Swanson, Bob Bamford, Larry Perkins, Renu Jalota, Trudy Healy, Bonnie Baty, Clint Lewis, Charley Swift, Joyce Sohler, Brett Dumbauld, Rich Gregerson, and Paul Horton.

£\$ WMC TREASURER'S REPORT \$£

June 4, 1975 (Transactions through May 21, 1975)

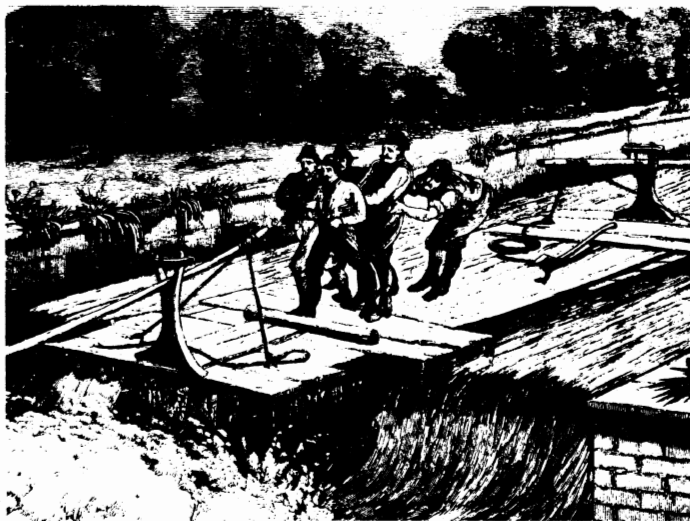
Summary:	Balance (Apr 16)	Revenue	Disbursements	Balance (May 21)
General Fund	2819.47	786.88	76.71	3529.64
Lodge	2436.80	35.00	76.38	2395.42
Boating	2054.19	1125.00	769.10	2410.09
Mountaineering	425.55	116.00	62.85	478.70
Socials	153.94			153.94
Conservation	396.95			396.95
Sam Thomas Trail Fund	120.95			120.95
Sam Thomas Spec. Fund	925.00			925.00
Ski Touring	319.70			319.70
Wasatch Trails	2337.63			2337.63
Hiking	38.19			38.19
Kayaking	36.00	69.76		105.76
Totals	12,064.37	2132.64	985.04	13,211.97
Savings Accounts	9,000.00			9,000.00
Checking Account	3,064.37			4,211.97



by Paul Horton

The Beginners Climbing Course was a success this year thanks mainly to the efforts of teachers John Gottman, Renny Jackson, Hal Gribble, Max Townsend, Dave Smith, Jim Key, Larry Perkins, Richard and Mark Wagner, and Rob Snyder.

Those who attended the course were Jay Reese, Jeff Coles, Mike Treshow, Bob Hayes, Steve and Ralph West, Bill and Diane Shepard, Mark Ebaugh, Lew Hitchner, Wick Miller, Bill Swander, John Minnesota, Renu Jalota, Mark and Steve Smith, Pete Campbell, Mary Welch, Clint Lewis, Joan Nicholson, Linda Clark, Bonnie Baty, Jim Hinkley, Oliver Fagueras, Dave Endicott, and Danny Horton.



K. McCarty, B. Everson and friends continue their investigation of new boating craft; this is a Polish sub, about to submerge.

Mt. Aire Hike

May 17, 1975

By Lon Rosqvist, age 9

It was a bright sunny day when we met at the Movie Theater. We all got into the car and started to go up Millcreek Canyon. It looked like it was going to be a nice hike. We were driving along when we came to some snow on the road. It was about 8 inches deep in most places, and some places it was two feet deep. We had to hike up the road about $1\frac{1}{2}$ miles. We came to a lot of water running across the road that we had to cross before we could start the hike. We started the hike. We hiked up the trail. There was a lot of snow. There were some places that were dry. We had a lot of fun going up, but everyone's feet got wet and frozen. We slid on our coats on the snow when we got up to the saddle. We had to take off our boots and socks and let them dry. We had lunch up there. We met two girls. When it was time to go down, most everybody ran down. Then we went home.



by John Gottman

Thursday night climbing is continuing with the normal "what's taking so long," "why isn't he (or she) doing the route," "that's an easy nut placement," and "if he's (or she's) having trouble why doesn't he (or she) call for tension," leader frustrations, and the normal "why did he pick such a hard (or easy) route." "I can't get this dumb nut out," "how come he keeps pulling on the rope," and "why do all the leaders want to climb together" follower frustrations. The beer (though sometimes a bit warm), and companionship (also often a bit warm), and hamburgers (thanks to the Randalls in May and Dave George in June) are super as usual, and may have something to do with the leaders' interest in finishing the climbs.

Dale brought a bound book of the 1967-1968 Ramblers to a June board meeting. It was a great source of pride to me as I read Dave Allen's Ramblings and route descriptions and the trip writeups by Max Townsend on the Tetons and Tom Stevenson on the first winter ascent of Mt. Moran. The Alexis Kelner photos were fantastic. It was also a source of humility when I realized that only two of us finished the Triple Traverse on our June 1 snow climb and hike.

.... and when I'm up there, regardless of the weather, I feel exhilaration that is usually accompanied by a rush to my chest and my mind and sometimes tears. There is an excitement, a cleansing and renewing that must come close to the feeling of salvation.

A P P L I C A T I O N F O R M E M B E R S H I P

WASATCH MOUNTAIN CLUB
3155 Highland Drive
Salt Lake City, Utah 84106

NAME (Print) _____ Telephone _____

Name of spouse (only if spouse wants membership also) _____

Address _____ ZIP _____

Occupation (Optional) _____

I hereby apply for membership in the Wasatch Mountain Club and enclose \$ _____ as my annual membership dues for the year _____, \$ _____ of which is for a subscription to the Rambler for the year and \$4.00 entrance fee. (From January to August, dues are \$6.00 of which \$5.00 are for a Rambler subscription - Spouse dues (non-subscribing) are \$3.00 - plus \$4.00 entrance fee. From September to December, the dues are \$3.00, of which \$2.50 are for a Rambler subscription -- Spouse dues (non-subscribing) are \$1.50 - plus \$4.00 entrance fee.) I (do) (do not) desire to receive the Rambler.

I have attended two Club activities in the past 12 months as required for membership such as hikes, ski tours, camping trips, rock-hound trips or work parties and have been recommended by two trip leaders who are Club members. Social events such as lodge parties, winter socials, etc. are not activities qualifying for membership. I agree to abide by all the rules and regulations of the Club as specified in the Constitution and Bylaws as determined by the Board of Directors.

I am specifically interested in the items checked below:

Hiking _____ Ski Touring _____ Boating _____ Mountaineering _____ Caving _____
Cycling _____ Conservation _____ Writing and Editing _____ Organizing social
activities _____ Lodge Work _____ Photography _____ Other _____

CLUB ACTIVITIES ATTENDED:

		Signature of recommending Trip Leader
1.	_____ Date _____	_____
2.	_____ Date _____	_____ Trip Leader _____

(Note: The signature of a Director may be substituted for one Trip Leader.)

Signature of Applicant

MT. OLYMPUS HIKE

June 8

by J. C. May

Only 13 hardy souls showed up at Pete's Rock for the annual Mt. Olympus blister marathon since the peak had its head nestled in the clouds 'til mid-morning, and our clairvoyant Salt Lake weathermen had forecast storms.

In the early morning, Olympus was the only mountain in the valley socked in; everywhere else seemed to be sunny and clear. Thus, people showed up in dribbles until by 9:30 there were a baker's dozen of hikers ready to head for the top. Since there had been heavy dew in the morning, the group got off to a slipping and sliding start up the trail south of Pete's Rock.

The "hares" of the group quickly jumped out in the lead, short-cutted up the first face, and were not seen again until the snow-covered top was reached about noon. The middle bunch arrived about a half hour later and the "tortoises" about 1:15.

The first steep grade after the initial stream crossing was navigated at a slithering, sliding crawl. A lot of mud-shucking and jiving ensued as vibras quickly clogged.

Last man up the mountain and last man off Olympus was that intrepid flower stalker, Carl Bauer, and his trusty camera and extensions. Higher up the flowers were just out, since Spring was a few weeks late. The vivid yellows of Glacier Lilies and Mules' Ears abounded alongside the trail. The highlight of the day's shooting was a brilliant orange-colored fungus which Carl and John Marks managed to bag after a long chase.

Halfway up the mountain, the sun came out to stay, burning away the remaining mists.

John Gottman and friend Susan passed the stragglers and flower-lovers after the slippery pitch. When the summit was reached, they were enjoying a picnic of wine, cheese, and bread, soaking up the sun, and taking in the beautiful view from the top.

On this clear day, the group could see far across the valley to the Kennecott smokestacks, and even up into Ogden. The peaks of Big and Little Cottonwood beautiful, magnificently sheathed in white and highlighted against the azure sky with a few billows of cumulus hanging around. The view was worth the effort.

Needless to say, this writer was moaning and groaning and moving pretty slowly the next morning, having stiffened up a considerable bit. Dragging myself down the mountain and up used up a lot of my hump.

Others making the hike were: Dick Conn, leader; Leona Sabine, John Marks, Len Hitcher, Ann Wennhold, Car Bauer, Oscar Robison, Ravin Wilkinson, Bruce Lessig, Jim Rasmussen, Ross Pearson, and John Gottman and friend.

WASATCH MOUNTAIN CLUB, INC.

3155 Highland Drive/Salt Lake City/Utah 84106

Vol. 52, Issue 7 (1975)

SECOND CLASS
POSTAGE PAID
AT SALT LAKE
CITY, UTAH.**BOARD OF DIRECTORS**

DALE GREEN	PRESIDENT	277-6417
JUDY DAVIS	SECRETARY	272-6435
MEL DAVIS	TREASURER	278-3174
KEN McCARTY	BOATING	466-3297
MIKE OMANA	CONSERVATION	561-4537
PEGGY TAYLOR	ENTERTAINMENT	272-4624
MIKE HENDRICKSON	HIKING	484-2640
DANNY THOMAS	KAYAKING	561-8606
DESIREE (DIZ) MAYS	LODGE	582-3818
JUDY WEATHERBEE	MEMBERSHIP	272-5510
JOHN GOTTMAN	MOUNTAINEERING	359-4693
AUDREY STEVENS	PUBLICATIONS	(1)649-9884
DWIGHT NICHOLSON	SKI TOURING	359-6178