

The Rambler

MARCH 1975 Vol. 52, Issue 3



Official publication of THE WASATCH MOUNTAIN CLUB Salt Lake City, Utah

news & notices!

COVER: The annual rebirth of mountaineering madness, caught by Frank West at Pete's Rock last spring.

The results of the voting for the new Board of Directors may be seen on the back cover of this issue. Diz Mays is the new Lodge Director, but will not take office until May when the Mays return from a trip.

thanks

- ...to George and Georgia Randall, for mailing the March RAMBLER.
- ...to Adrian Graphics Stevens, for her incredibly splendid artwork.
- ...to Sally Nelson, editor emeritus, whose titles inspired us.

The Wasatch Mountain Club is governed by a Board of Directors - 13 representatives elected by the membership. Through the courtesy of Timberline Sports, our mail is sent to their address, 3155 Highland Drive, for collection only. The Club's telephone is located at O'Dell's Shoe Repair Shop, 425 South 8th West. This phone is maintained as an answering service only by Life Members 'Pete' (O'Dell) Peterson and wife 'Pinky'. They take time out from their work to answer the phone and relay incoming messages to the proper Director. The Petersons do not hold any office, or attend Board meetings or are they informed by the Board of official actions. If a trip leader cannot be contacted or is not specified, call the Director of that department for information. The Board strongly desires to hear comments, suggestions, inquiries, and criticisms concerning the operation of your Club. Please feel free to phone any Director or write to the President. Names will be withheld upon request, but anonymous letters will be disregarded.

Mountain Club business is conducted only on the first and third Wednesdays of each month. At that time, and only at that time, is the mail opened, new membership applications voted on, dues payments recorded, address changes made, and all other business requiring board action conducted. All board members cannot attend all board meetings and although an effort is made to fill in during a member's absence, some business is held for action until the next meeting.

THE RAMBLER is published monthly by the Wasatch Mountain Club, Inc., 3155 Highland Drive, Salt Lake City, Utah 84106. Subscription rates are \$5.00 a year. All correspondence regarding changes of address, mailing, etc. may be directed to the Membership Director at the address above.

Application to mail at 2nd class postage rate is pending at Salt Lake City, Utah.

RAMBLER Deadline

- ...for APRIL is March 15, Saturday. Please have your articles and schedules typed and mailed to:
ATTENTION: RAMBLER EDITOR
Wasatch Mountain Club
3155 Highland Drive
Salt Lake City, Utah 84106

CLUB ACTIVITIES FOR MARCH 1974

REGISTRATION WITH TRIP LEADERS is important for ski tours since weather and snow conditions can cause cancellation or change in destination. It also aids in organizing car shuttles early enough to avoid delays. Register with the leader by some reasonable hour on the day before the tour.

RATINGS OF SKI TOURS (X,Y) describe the difficulty of the climb (X) and the skiing proficiency required to get down (Y). Both are rated from 1 to 6, in order of increasing difficulty. A detailed description of some popular tours is in the November 1974 RAMBLER. Contact the

leader if you are in doubt about your ability to do the tour.

Avalanche information is available from Milt Hollander, 277-1416, and from the Wasatch National Forest winter sports information recording, 486-6333. The snow rangers at Alta get so many calls that you should use them only as a last resort, and please don't call them late in the evening. Avalanche probes and cords are required on advanced ski tours. Probes are available to rent through Ski Touring Director Dwight Nicholson and for sale from Dave Hanscom, 487-6065.

FREE NORDIC SKIING CLINICS -- for beginners and others -- every Saturday. Call Timberline Sports, 466-2101 or Wasatch Touring Company, 359-9361.

MARCH 8
Saturday

NORTH FACE OF MT. OLYMPUS - Winter climb. Our first mountaineering event of the year will be a long hard day involving a snow hike on the approach, roped snow and rock climbing on the face, and probably roped down-climbing from the north summit. Call the leader for winter equipment requirements. Meet at The Movie at 7:30 a.m. (Wasatch Blvd. & 39th So.). Leader: Larry Swanson. Business phone: 328-8066, ext. 4456. Home phone: 278-3269.

MARCH 8
Saturday

BRIGHTON-ALTA-BRIGHTON - Alpine tour - meet at the mouth of Big Cottonwood Canyon at 8:00 a.m. Leader: Gerry Horton, 262-8372.

MARCH 8
Saturday

BEGINNER SNOWSHOE TRIP - This trip will wander around Albion Basin and possibly continue up to Catherine Pass. Meet at the mouth of Big Cottonwood at 8:30 a.m. Leader: Phil Nelson, 581-9205.

MARCH 9
Sunday

WMC/TIMBERLINE BEGINNER NORDIC TOUR. Call Timberline for details, 466-2101.

MARCH 9
Sunday

WOLVERINE PEAK - This is a good intermediate Nordic trip. Meet at the mouth of Big Cottonwood at 9:30 a.m. Leader: Jim Byrne, 582-5631.

MARCH 9
Sunday

WINTER SOCIAL. Bob and Denna Wright will host the final winter social of this season in their unique dome home. Dinner will be

served at 6:00 p.m. for a reasonable charge, and drinks are available for same. The address is 3033 East 5800 South. Enter off Holladay Blvd. on 5800 South. Please park below the bridge. The Wrights' phone is 272-1177.

- MARCH 11
Tuesday CGDEN PROGRAM - Dr. Jock Glidden will show slides and tell about climbing as a member of the American team in Russia. His program recently drew a full house at the Weber College Convocation. Place: First Unitarian Church, 569 S. 13th E., Ogden. Time: 7:30 p.m.
- MARCH 14-16
Fri.-Sun. LODGE OPEN weekend hosted by George and Georgia Randall. Saturday night there will be a potluck dinner and movies. Don't forget your sleeping bag, food, eating utensils and skis. Please call the Randalls, 322-2360, for the contents of your dish.
- MARCH 15-16
Sat.-Sun. IGLOO AND SNOWCAVE BUILDING OVERNIGHT. Snow permitting, we will go somewhere in Big Cottonwood for our snow construction and winter camping experience. For information call Dwight Nicholson at 359-6178.
- MARCH 15
Saturday DESCLATION LAKE VIA MILL D - An excellent intermediate Nordic trip, possibly continuing over to Millcreek Canyon. Meet at the mouth of Big Cottonwood at 9:00 a.m. Leader: Mel Davis, 278-3174.
- MARCH 16
Sunday WMC/TIMBERLINE BEGINNER NORDIC TOUR. Call Timberline for details, 466-2101.
- MARCH 16
Sunday MAYBIRD LAKES - Advanced Alpine - a very good trip into the high country in Little Cottonwood. Meet at the mouth of Big Cottonwood at 8:00 a.m. Leader: Rolf Doebbling, 364-9934.
- MARCH 17
Monday KAYAK POOL PRACTICE starts Monday night at 8:00 p.m. and runs for ten weeks. Structure will be determined by interest and number attending. Cottonwood High School pool, 5715 South 13th East. Charge is \$1.00 per night.
- MARCH 22
Saturday LAKE BLANCHE NORDIC OR SNOWSHOE TRIP. This is an intermediate trip starting at the "S" turn. Meet at the mouth of Big Cottonwood at 9:00 a.m. Leader: Bob Wright, 272-1177.
- MARCH 22
Saturday DAYS FORK. This is a good trip for experienced Nordic or Alpine skiers. The downhill run is a real bargain for the uphill climb, for we will start at Alta. For details call the leader, Dave Smith, 486-2680.
- MARCH 23
Sunday UINTAS NORDIC TRIP, possibly going into the East Fork of the Bear River. This will be a long tour, so only the experienced and in shape should register. There will be a limit of ten people, so call the leader for details. Leader: Dave George, 359-8177.
- MARCH 23
Sunday POWDER MOUNTAIN MOONLIGHT TOUR. There's a rumor floating about that the leader plans a very nice gathering at his house beforehand. Leader: John Herbert, 393-7737, Ogden. Call for details.

- MARCH 26-27 LODGE OPEN, but we need a host during the spring school recess.
Wed.-Thurs. Call Phil Nelson, 581-9205.
- MARCH 28-30 LODGE OPEN - Hosted by Noel deNevers and family, phone 325-9376.
Fri.-Sun.
- MARCH 29 RED PINE LAKES. This is a good intermediate Nordic or snowshoe trip
Saturday in Little Cottonwood Canyon. Meet at the mouth of Big Cottonwood
at 7:30 a.m. Leader: Richard Wagner, 484-8916.
- MARCH 30 WMC/TIMBERLINE BEGINNER NORDIC TOUR. Call Timberline for details,
Sunday 466-2101.
- MARCH 30 ALBION BASIN - Beginner Nordic or snowshoe trip. This tour will
Sunday possibly be going up by Devils Castle. Meet at the mouth of Big
Cottonwood at 9:00 a.m. Leader: Mike Hendrickson, 484-2640.
- APRIL 3 EVENING CLIMBING AT PETE'S ROCK. See page 6 of this Rambler for
Thursday an explanation of this cryptic title.
- APRIL 5 PFEIFFERHORN. This is an advanced Alpine or Nordic trip, well worth
Saturday the effort if you are in shape. The view of the Wasatch from the
top is unexcelled. Meet at the mouth of Big Cottonwood at 7:00 a.m.
Leader: Steve Swanson, 484-5808.
- APRIL 5 FOOTHILL I. The hikes begin! We'll follow the ridge up Pencil
Saturday Point to the upper ridge. This is a beginner hike to help get you
in shape. Meet at the K-Mart parking lot near the Regency Theatre
(Foothill Blvd. & Parleys Way) at 9:30 a.m. For more information
call the Hiking Director, Mike Hendrickson, 484-2640.
- APRIL 6 NORDIC TRIP IN THE UINTAS. This will be a long spring tour so call
Sunday the leader for details. Leader: Dwight Nicholson, 359-6178.
- APRIL 6 LITTLE BLACK MOUNTAIN - rating 6.0. A good intermediate hike up
Sunday onto some of the University's new land. Meet at the west end of
the Shriners' Hospital at 8:30 a.m. Mike Hendrickson, 484-2640.
- APRIL 10 EVENING CLIMBING AT PETE'S ROCK.
Thursday
- APRIL 11-20 GRAND CANYON RIVER TRIP. Reservations are still open for this
Friday to spectacular nine-day trip through the Grand Canyon. It is on a
Sunday week first-come, first-serve basis with current WMC members having
priority. The price is \$300 for the river trip plus approximately
\$75 for transportation (may be less!). A deposit of \$75 is re-
quired. Please make the check out to the Wasatch Mountain Club
and mail it to Karen Weatherbee, 1167 Ramona Ave. #4, SLC 84105.
A deadline for reservations will be about three weeks before the
trip. We will have a group meeting shortly before April 11th to
discuss equipment, meeting place, and other final details. You'll
be notified about the meeting if your reservation has been received.
Call Karen at 467-9715 after 5:30 p.m. for further information.
See the February Rambler for other details.

- APRIL 11 LODGE OPEN, but as yet unhosted. Call Phil Nelson for details,
Friday 581-9205.
- APRIL 12 FOOTHILL II. Another beginner warmup hike up into the area between
Saturday Big and Little Cottonwood canyons. Meet at the mouth of Big Cotton-
wood at 9:30 a.m. Mike Hendrickson, 484-2640.
- APRIL 12-13 LODGE OPEN. Ron and Dagny Healey will host for a weekend of family
Sat.-Sun. skiing. Youngsters welcome. They will have the Lodge open from
noon until noon. Call 484-5607 for details.
- APRIL 13 BIG BEACON - rating 3.0. This is a popular club hike up the peak
Sunday just north of Hogle Zoo. Meet at the This is the Place Monument at
9:00 a.m. Mike Hendrickson, 484-2640.
- APRIL 17 EVENING CLIMBING AT PETE'S ROCK.
Thursday
- APRIL 19 THE ANNUAL GOURMET TOUR. Once again this annual trip will be
Saturday going up into the Wasatch at the nicest time of year, to taste
the different gastronomical delights of the participants. This
will be a beginner trip suitable for all - snowshoers, skiers,
everybody! Bring along your favorite dish and meet at the mouth
of Big Cottonwood at 9:00 a.m. for a delightful day in the sun.
The leader is, of course, Gale Dick, 359-5764.
- APRIL 25-27 LODGE OPEN AND RIVER RATS PARTY. See the April Rambler for details
Fri.-Sun. or call Ken McCarty. 466-3297.



is having a SALE

ON ALL SKIS, BOOTS, POLES, & BINDINGS. DURING THE
MONTH OF MARCH, 1 DAY'S RENTAL CAN BE APPLIED TO
THE SALE. MOUNTING AND BASE PREPARATION IS FREE.

Mountaineering

by

John Gottman

Ramblings



Our 1975 Mountaineering Program is getting off with a great start with an assault on the north face of Mt. Olympus on 8 March (see schedule). We will have four Thursday night sessions at Pete's Rock (approx. 5500 S. Wasatch Blvd.) starting April 3rd around 5:30 - 6:00 p.m. We will go to Storm Mt. picnic area in Big Cottonwood Canyon on May 1st where beer and hamburgers will be available for fees.

Thursday nights are mostly for fun. We do relatively short climbs with varying degrees of difficulty. Major objectives are practice and participation. Experienced climbers and ropes are on hand, but participants should at least have a good pair of boots and are encouraged to have helmets. The Beginners Climbing Course will start in May under the direction of Titanic Paul Horton (see April RAMBLE). This course will allow participants to gain enough experience to be welcome on our local and out-of-town events.

Our weekend trips are tentatively planned to include the Hanging Canyon in the Tetons - July 4-6th, the Temple area of the Wind River Range - July 24-27th, and the Cirque of The Towers - Aug. 30-Sept. 1st. The Cirques adjacent to Thunderbolt Ridge in Upper Hogum are being considered for May 24-26th, but as usual, Memorial Day is uncertain. Local day-trips will include Mule Hollow Wall, Sundial, Inside and Outside Corners, Tanners Gulch, Thunderbolt Ridge, North Face of Mt. Olympus, and possibly The Hound's Tooth. I will be coordinating with the other directors to minimize schedule conflicts.

I want to encourage all interested climbers to keep skiing and start hiking at the earliest opportunity to be in shape for our more interesting events.

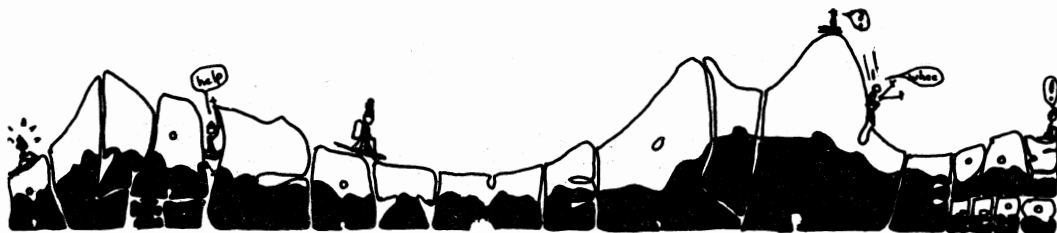
I am looking for suggestions, trip leaders, and lots of rope leaders. I hope participation will continue at the recent high levels on all of our activities.

BROOM-HILDA



BY RUSSELL MYERS





February 8

by Joy Levetan

SNOWSHOE TOUR

On time and rarin' to go, four early risers - greenhorns all - and our seasoned guide, Elmer Boyd, met at the mouth of Little Cottonwood at 8:00 a.m. Then at Alta we took the Neversweat (Albion) lift. With a backpack and carrying snowshoes and poles, the ride was "ever-sweat"! We got off somehow, struggled with our snowshoes and started up the mountain.

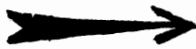
We had to traverse most of the way (huffing and puffing, I might add) until we reached the pass. I had the thought more than once that if this was a beginner's trip, advanced must mean hiking to the Canadian border and back. Anyway, we made

it to the top by 11:15 which surprised us all. We relaxed and basked in the sun during lunch; the effort was worth it. John M. and I decided to go back down while the others went up on the ridge to go to Albion hut. It was a good thing we started back. A blast of wind and snow hit us and it was COLD! Apparently Elmer and the others decided not to go on with the storm coming in, because we met them at the bottom. It was a great day!

Participants: Elmer Boyd, Leader; John Cole, John Marks, Renu Jalota and Joy Levetan.

Scotts Pass

WORMIE BELT



VIA MILL F NORTH FORK

February 15

by Bill Rosqvist

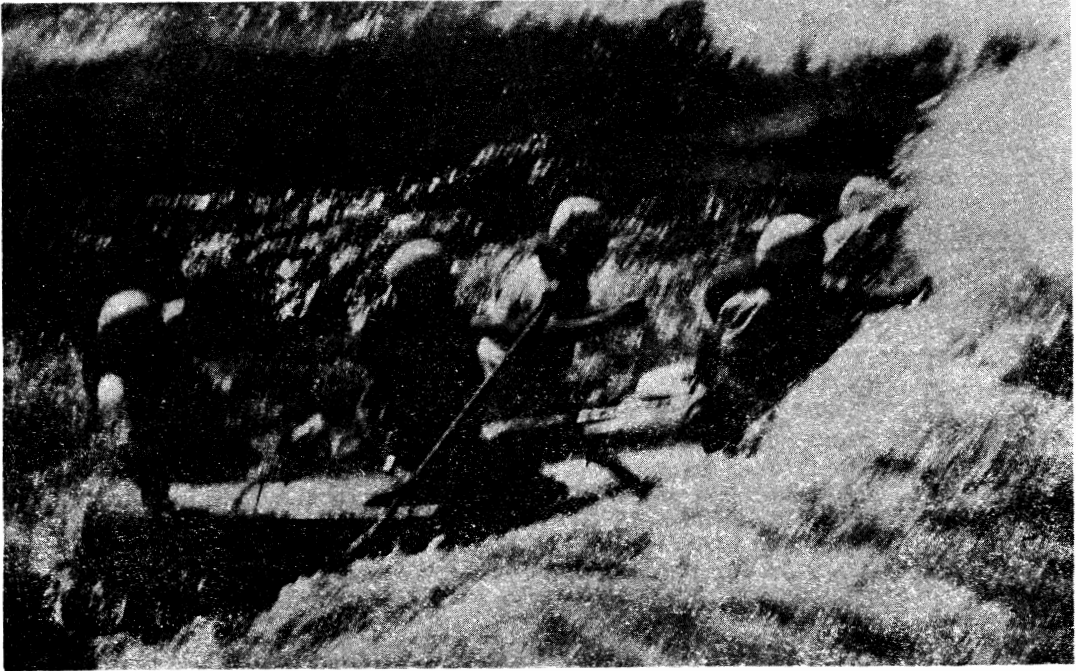
It all started because I decided to stay home one cold night in January. The phone rang...it was Dwight. "Oh sure, I'd be delighted to lead a ski tour. Scotts Pass? Where's that? Oh yeah, Solitude - just across the road."

As it turned out, February 15th was the first day of sunshine I had seen for

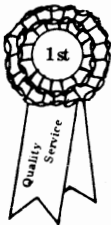
almost a month. It was warm and pleasant. The 8:00 a.m. start got us up the canyon before the mad rush for the lift lines. We really didn't go to Scotts Pass, but to the high point on the west of the radio towers. The snow was a little crusty, but it didn't stop anyone from having a good time. The highlight of the day was close examination of the rime ice on the trees.

Wooden skiers* were: Karl Laperberg, Trudy Healy, Craig Stone, Gary Gantner, Dennis Zwang, Gordon Newman, John Cole, Mel Davis and Bill Rosqvist. Rabbits were Elmer Boyd and Jenny Lee Snow.

*Wooden skiers are those who ski on wooden skis or ski like wooden figures.



- CUSTOM-BUILT HOMES
- LOW-INTEREST FINANCING
- NO-COST MARKET APPRAISALS
- HIGH-VALUE TRADE-IN ALLOWANCE
- TAX-SHELTERED INCOME PROPERTIES
- MORTGAGE COUNSELING



SAM ALLAN 487-8901

BLUE RIBBON REALTOR

2870 EAST 3300 SOUTH •

APPLICATION FOR MEMBERSHIP

WASATCH MOUNTAIN CLUB
3155 Highland Drive
Salt Lake City, Utah 84106

NAME (Print) _____ Telephone _____

Name of spouse (only if spouse wants membership also) _____

Address _____ ZIP _____

Occupation (Optional) _____

I hereby apply for membership in the Wasatch Mountain Club and enclose \$ _____ as my annual membership dues for the year _____, \$ _____ of which is _____ for a subscription to the Rambler for the year and \$4.00 entrance fee. (From January to August, dues are \$6.00 of which \$5.00 are for a Rambler subscription - Spouse dues (non-subscribing) are \$3.00 - plus \$4.00 entrance fee. From September to December, the dues are \$3.00, of which \$2.50 are for a Rambler subscription -- Spouse dues (non-subscribing) are \$1.50 - plus \$4.00 entrance fee.) I (do) (do not) desire to receive the Rambler.

I have attended two Club activities in the past 12 months as required for membership such as hikes, ski tours, camping trips, rock-hound trips or work parties and have been recommended by two trip leaders who are Club members. Social events such as lodge parties, winter socials, etc. are not activities qualifying for membership. I agree to abide by all the rules and regulations of the Club as specified in the Constitution and Bylaws as determined by the Board of Directors.

I am specifically interested in the items checked below:

Hiking _____ Ski Touring _____ Boating _____ Mountaineering _____ Caving _____

Cycling _____ Conservation _____ Writing and Editing _____ Organizing social

activities _____ Lodge Work _____ Photography _____ Other _____

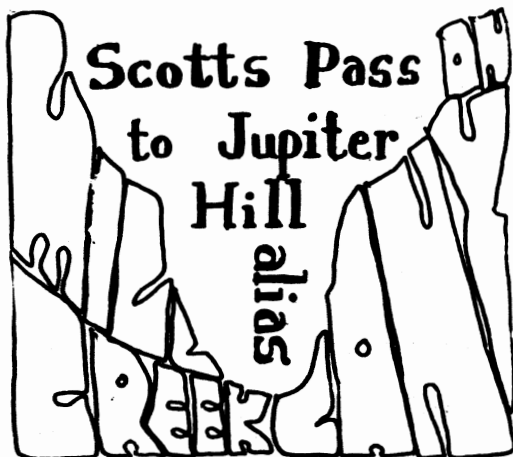
CLUB ACTIVITIES ATTENDED:

1. _____ Date _____ Signature of recommending Trip Leader _____

2. _____ Date _____ Trip Leader _____

(Note: The signature of a Director may be substituted for one Trip Leader.)

Signature of Applicant



The skiers raced up the canyon and the snowshoers meandered their way along. A couple of miles later, we snowshoers noticed the skiers sitting in the sun having lunch and we joined them. Strangely enough, none of them were willing to swap skis for snowshoes for the return trip down the canyon! After lunch the x-c group took off and that was the last we saw of them. We learned later that they weren't really too far ahead of us and we got out in good time. It was a beautiful day and a perfect trip for beginners on x-c's, but it was a little slow for snowshoers.

Participants: Kermit Earle, Leader; Marilyn Earle, Doug Stark, Jim Frese, Lance Pratt, Wick Miller, John Cole, Richard Wagner, John Hobbie, Judy Davis, Danny Thomas, Elmer Boyd and Joyce Schler.

January 12

by Marilyn Earle

We met at the mouth of Big Cottonwood and saw what appeared to be hundreds of people milling around. The Canyon Inn was packed and three police cars blocked the road up the canyon. Sure enough, a large slide had come down and the road would be closed for the rest of the day.

So, we picked an alternate tour and went up Millcreek Canyon. There were thirteen in our group and seven of them were cross-country skiers. We went up Birch Hollow, which was a little tricky going up on skis, but easy on snowshoes. Later, the trail leveled off, and the skiers left the snowshoers behind. The tour was only two miles long, and we finished at 11:30 a.m. at Elbow Fork. Everyone then decided to ski up the Millcreek Canyon road which wasn't plowed. We ran into a few snowmobilers whom we tried to pretend weren't there.

Elmer Boyd decided to go on the Terraces trail, which starts out by heading straight up the side of the mountain. Several hardy souls followed him and we never saw them again. However, a phone call after we got home verified that they had returned safely.



WASATCH MOUNTAIN CLUB, INC.

3155 Highland Drive Salt Lake City Utah 84106

Vol. 52, Issue 3 (1975)

Application to mail
at 2nd class postage
rate is pending at
Salt Lake City, Utah.

FE**BOARD OF DIRECTORS**

DALE GREEN	PRESIDENT	277-6417
BETTY HENDRICKS	SECRETARY	487-1929
MEL DAVIS	TREASURER	278-3174
KEN McCARTY	BOATING	466-3297
MIKE OMANA	CONSERVATION	561-4537
KAREN WEATHERBEE	ENTERTAINMENT	272-2624
BILL ROSQVIST	HIKING	295-0458
J DEWELL	KAYAKING	295-2754
PHIL NELSON	LODGE	581-9205
JUDY WEATHERBEE	MEMBERSHIP	272-5510
PAUL HORTON	MOUNTAINEERING	328-9486
AUDREY STEVENS	PUBLICATIONS	(1) 649-9884
DWIGHT NICHOLSON	SKI TOURING	359-6178