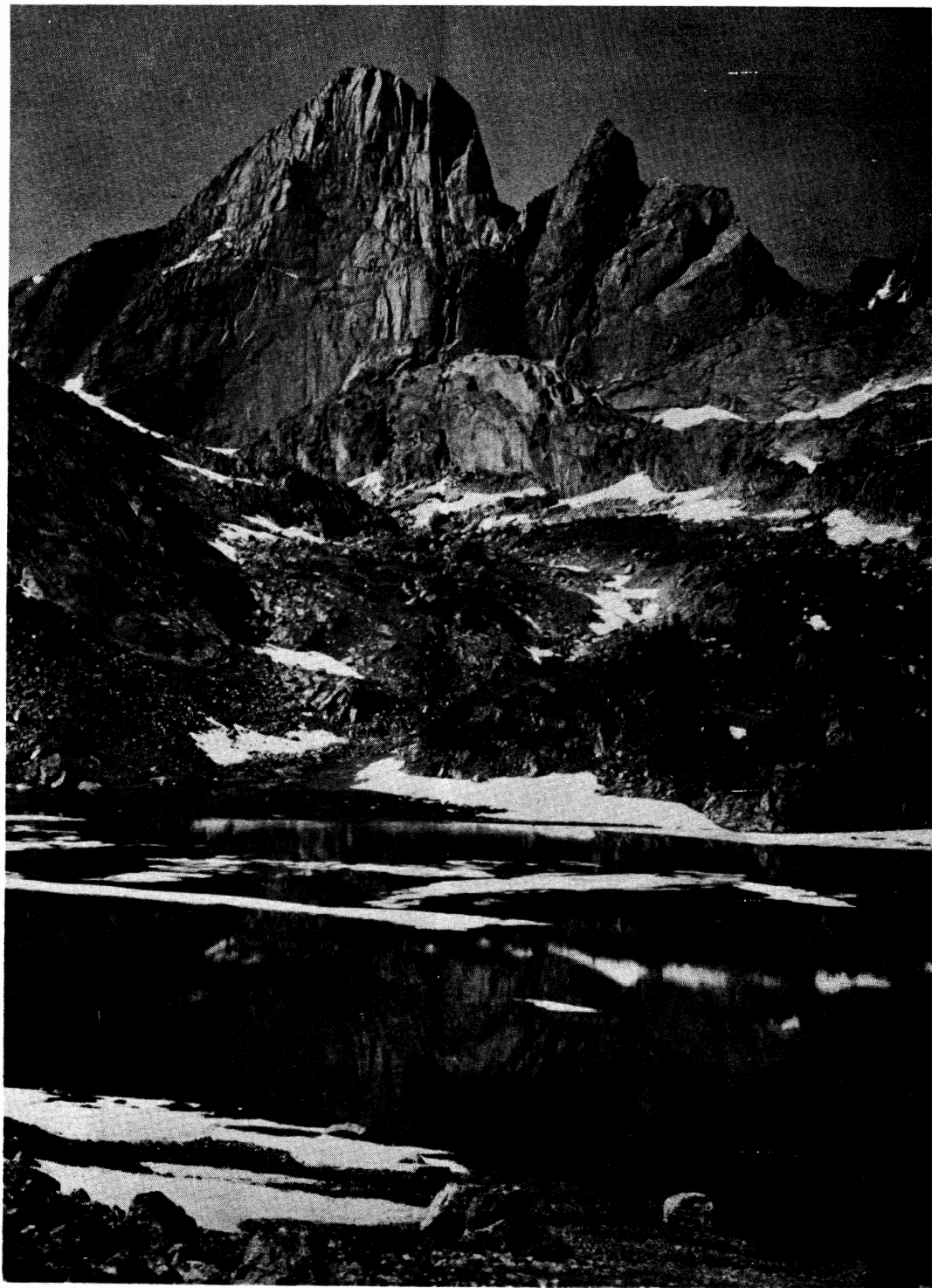


# *The Rambler*

NOVEMBER 1975

Vol. 52, Issue 11



*Official publication of THE WASATCH MOUNTAIN CLUB Salt Lake City, Utah*

# news & notices!

COVER: East Temple peak,  
in the southern area of  
the Wind River Range, Wyo.  
From a slide by Lew Hitchner,  
July 24th High Camp.

## thanks

...to Adrian Superdaughter  
for co-editing and graphics.

...to Karen Weatherbee and  
John Schell for mailing  
the September Rambler.

...to George and Georgia  
Randall for mailing the  
Oct. and Nov. Ramblers.

...to Jude Whitehead for  
artwork on the October  
Rambler.

THE RAMBLER is published monthly by the  
Wasatch Mountain Club, Inc., 3155  
Highland Drive, Salt Lake City, Utah  
84106, Tele. 363-7150. Subscription  
rates are \$5.00 a year. Prospective  
members may obtain 2 months' free  
Ramblers by contacting Club headquarters  
or the membership Director. All corre-  
spondence regarding changes of address,  
mailing, etc., may be directed to the  
Membership Director at the address  
above. Second Class Postage paid at  
Salt Lake City, Utah.

## rambler

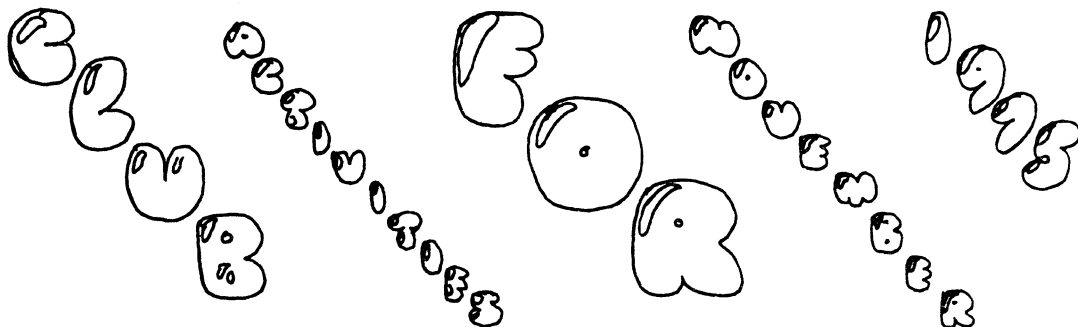
### Deadline

...for DECEMBER is November 15,  
Saturday. Please have your  
articles and schedules typed  
and mailed to: (also pictures)

ATTENTION: RAMBLER EDITOR  
Wasatch Mountain Club  
3155 Highland Drive  
Salt Lake City, Utah 84106

The Wasatch Mountain Club is governed by a Board of Directors - 13 representa-  
tives elected by the membership. Through the courtesy of Timberline Sports, our  
mail is sent to their address, 3155 Highland Drive, for collection only. The Club's  
telephone is located at O'Dell's Shoe Repair Shop, 425 South 8th West. This phone  
is maintained as an answering service only by Life Members 'Pete' (O'Dell) Peter-  
son and wife 'Pinky'. They take time out from their work to answer the phone and  
relay incoming messages to the proper Director. The Petersons do not hold any  
office, or attend Board meetings or are they informed by the Board of official ac-  
tions. If a trip leader cannot be contacted or is not specified, call the Director of  
that department for information. The Board strongly desires to hear comments,  
suggestions, inquiries, and criticisms concerning the operation of your Club.  
Please feel free to phone any Director or write to the President. Names will be  
withheld upon request, but anonymous letters will be disregarded.

Mountain Club business is conducted only on the first and third Wednesdays of each  
month. At that time, and only at that time, is the mail opened, new membership  
applications voted on, dues payments recorded, address changes made, and all  
other business requiring board action conducted. All board members cannot attend  
all board meetings and although an effort is made to fill in during a member's ab-  
sence, some business is held for action until the next meeting.



REGISTRATION WITH TRIP LEADERS is important for ski tours since weather and snow conditions can cause cancellation or change in destination. It also aids in organizing car shuttles early enough to avoid delays. Register with the leader by some reasonable hour on the day before the tour.

RATINGS OF SKI TOURS (X,Y) describe the difficulty of the climb (X) and the skiing proficiency required to get down (Y). Both are rated from 1 to 6, in order of increasing difficulty. A detailed description of some popular tours is in this issue of the RAMBLER. Contact the leader if you are in doubt about your ability to do the tour.

NOVEMBER 9  
Sunday

EARLY BIRD SKI TOUR -- Once again, Milt Hollander will take the eager bunch to wherever there is snow. Because of the questionable nature of this trip, registering with the leader is necessary. Call Milt at 277-1416 for details.

NOVEMBER 15  
Saturday

SKI TOURING DAY AT THE LODGE. It's time to come out and talk equipment and snow conditions. We will meet at 11:00 a.m. at the Lodge to have an equipment demonstration, then break for lunch. In the afternoon we'll go for a short tour, snow permitting. Later in the afternoon we will show some movies and slides, and if there is enough interest, there will be a dinner for those who care to stay. Please bring a lunch and call me if you want to stay for dinner -- Dwight Nicholson, 359-6178.

NOVEMBER 23  
Sunday

SNOWSHOE TRIP - MILL F TO SCOTTS PASS. Rating 2,2 Nordic skiers are welcome. Please register with the leader, George Randall, 322-2360.

NOVEMBER 27-30  
Thurs.-Sun.

GRAND GULCH BACKPACK. The Grand Gulch Primitive Area lies just south of Natural Bridges National Monument. The gulch itself is not as spectacular as Escalante or Canyonlands, but contains extensive areas of colorful Anasazi ruins and petroglyphs. The gulch sits on Cedar Mesa at elevations ranging from 5700 feet to 5200 feet. The plan for this trip calls for traversing the gulch from Kane Springs to Collins Springs, a distance of 33 miles. Due to the elevation, this trip might be cancelled in case of extremely bad weather. Register with the leader for details and meeting place. Leader: Elmer Boyd, 583-2292.

NOVEMBER 27  
Thursday

THANKSGIVING DAY TOUR. Milt Hollander will be leading this appetite-building tour in the morning to get everyone ready for dinner. Please register with the trip leader, 277-1416.

NOVEMBER 27  
Thursday

THANKSGIVING DINNER AT THE LODGE. Bring your family, table service, skis, snowshoes, toboggans and thanks to the Lodge again this year. Dinner will be around 4:30 p.m. This is a planned potluck; call Judy Smith, 277-0536, evenings after 6:00 p.m. to discuss your contribution. Reservations will close Sunday night, November 23rd. Capacity is limited to about 90 people. Lodge open overnight and through the weekend. P.S. Be prepared to reimburse the turkey providers.

NOVEMBER 27-30  
Thurs.-Sun.

LODGE OPEN to stay overnight after Thanksgiving dinner or any other night of this holiday weekend that you can get away to the mountains. Take your snow season clothing, sleeping bag, food, pans and tableware. Hosts Thursday and Friday nights are John and Grace Burton, 467-5646; Saturday night is Sue Anderson, 485-3045.

NOVEMBER 29  
Saturday

NORDIC TOUR - MILL D TO DESOLATION LAKE. Rating 2,2 This is a very nice nordic tour and snowshoers are welcome. This tour will be limited to 20 people so call leader Al Wickham, 583-0077, to register.

DECEMBER 6  
Saturday

ALPINE TOUR - WHITE PINE. Rating 3,2 (I) This tour is also suitable for nordic skiers of intermediate ability. Register with leader Jerry Horton, 262-8372.

DECEMBER 14  
Sunday

ADVANCED ALPINE TOUR - ALTA TO LAKE BLANCHE WITH THE MINERAL FORK VARIATION. Rating 3,5 (N/A) Register with leader Alexis Kelner, 359-5387.



First ciggie of the morning - 10 a.m. that is, since the subject is Paul Horton!

Caught by Lew Hitchner, Wind Rivers, Labor Day.

# DROMEDARY

August 23

By Nancy N. Melling

Our group met at 8 am. (with Fran arriving on her bicycle as usual). After parking our cars at the trailhead, we took off for Lake Blanche, stopping for a break only after we reached Lake Blanche. We started out again and after going up a short way we could see our objective clearly. Our leader, John Gottman, asked which way we would like to go. He said the ridge would be "fun" or there were a variety of other possible ascents. Since almost all of us had never been up Dromedary before we had no opinions as to the route. So, off we went (or better, up we went). With only one small tricky spot (fun #1) we reached the saddle. As one of the stragglers, my final few yards to the saddle were accompanied by a few rocks being tossed over my head, compliments of our leader (fun #2). In spite of a chilly wind, we continued on toward the summit. One member of our party noticed a trail on our right but John assured us that the ridge would be much more interesting (fun #3). During our ridge assault, the Bruengers had arrived at the top via the trail and were there to greet us and join us for lunch.

Bruengers left via the trail as we finished our lunch and read the sign-in book. Then John led us down the ridge on the other side of Dromedary, going toward Sunrise. After a bit of a scramble, we reached the saddle between Dromedary and Sunrise, and John suggested that since we had already come so far we really ought to do Sunrise also. We all knew he was right, but Trudy was the only one with enough energy to verbally agree. The rest of us headed down Broads Fork. We went down two large patches of snow that looked as though they would survive until the new snow falls this winter. We arrived at the cars by 4 pm. - another exhilarating hike on a fine day with good company.

Leader: John Gottman. Participants: John Riley, Nancy and George Melling, Trudy Healy, Wayne Berndt, Phil Nelson, Fred and Evelyn Bruenger, Fran Flowers, and Jim Frese.

Want to host an overnight at the Lodge? Volunteer for one of these open weekends or holiday dates:

Saturday, December 13

Monday-Tuesday, December 22-23

(already hosted December 24-29)

Monday-Thursday, Dec. 29 - Jan. 1

Saturday-Tuesday, February 14-17.

CALL Leona Conn, 363-6035.

LEFT AT WOODCUTTING PARTY:

1 pair big black ski gloves

1 khaki green shirt

Please contact Diz Mays, 582-3818.

FOR SALE

One Universal pack and frame, 1½ yrs. old, size Large, \$40.00. Contact Bob Weatherbee at 272-5510 home, or 363-1454 office.

# THE PRESIDENT'S COLUMN

by Dale Green

## ADDRESS CONFUSION

Our club's telephone is not located at the same address as club headquarters, our mailing address. In previous years the phone company listed our address as "Salt Lake City" in their directory. Now they insist on listing the address as "425 South 900 West". PLEASE do not use this address for mail. Such use will only cause delay, confusion, and possible loss. (Does anyone have influence with Mtn. Bell to get our old SLC address back?)

## BITCH, BITCH, BITCH

We receive more complaints about late or missing Ramblers than all other complaints combined. Late issues are usually caused by Post Office problems even though we now have second-class postage privileges. If you have not moved and miss issues notify us immediately. If you change addresses here is what happens: We do not open mail until after the Rambler is mailed so your change of address notice to us (if you sent one) can not be acted on for that issue. When your postman gets your Rambler he rips off the back cover, throws the rest of your Rambler away, then mails the cover and address change to us with 10¢ postage due. This notice usually arrives after our second monthly board meeting so, yet another Rambler is sent before we open mail for the first monthly board meeting. Unless you sent us an address change, your second Rambler is also destroyed and we get another 10¢ postage due notice telling us what we already knew. If you move and don't want to miss Ramblers, guarantee forwarding postage for second class mail, or notify us in advance of your address change. (Remember we only open mail on the 1st and 3rd Wednesdays and sometimes not even then.)

## ABOUT CHILDREN

Lodge Regulation #9 states "Children are not to be allowed in the Lodge unless willing leader specifically signifies thus." The Club could be held liable if children are present when alcoholic beverages are served, just to mention one good reason for this rule. Parents, don't bring your children to Lodge functions uninvited!

# lone peak cirque

September 6

by Verne Huser

Nine hikers between the ages of 16 and 54 made the September 6 hike to the Lone Peak Cirque: seven of them also scrambled to the summit. Coming from as far away as Ogden and Provo (one visitor was from Arizona), the group made the 5,000-foot-plus hike in roughly five hours, requiring another hour to reach the 11,253-foot apex.

Wildlife encountered along the way included a magnificent mule deer buck still in velvet, a golden eagle, assorted rodents and smaller birds (nutcracker to hummingbird in size). No fewer than fifty species of flowering plants were identified on the way.

The outing netted wildflowers such as Parry's primrose, columbine, ranunculus (buttercup), and alpine avens as the party climbed through five life zones. We saw everything from sagebrush, mountain mahogany, manzanita, cliffrose and gambel oak (saw it, we wallowed in it!) to shrub spruce and subalpine fir, aspen and mountain maple.

Jim Key, leader of the pack, set a fast pace for such steep country, and we gained elevation rapidly: 1500 feet in the first hour and 3400 feet in 3:25 according to Frank West's altimeter. We descended somewhat more rapidly but wasted time in route-finding and bushwacking. It was an 11-hour, 11-mile trek that brought blisters to a number of feet, and a dry hike but for the water the party carried along.

Leader: Jim Key. Participants: Frank West, Jim Wheeler, David Steffensen, Fred Zoerner, Mike Hendrickson, Michael Zavortink, Charlie French and Verne Huser.

## HIGH UINTAS BACKPACK

August 30-September 1 by Mike Hendrickson

Starting an hour late (due to the failure of the leader to properly set his alarm), the group quickly loaded up and drove up to the Christmas Meadows campground and set out on the trail. The weather was cool, clear, and windy and made for a good time. After a seemingly endless trail and some brief conferences on where Ryder Lake was supposed to be, we finally found the lake and quickly set up camp. The rest of that day and all of the next, the main activities were fishing, reading, hiking, eating, and sleeping (particularly the eating). We all rose early, took another look at this magnificent basin with its spectacular peaks, and then headed down the trail under the threat of gathering clouds. The trip back to the cars was uneventful but fast with the main diversion being the proper application of moleskin.

Leader: Mike Hendrickson.  
Participants: John Hendrickson,  
Ewald Leverkus, and Jerae and  
Mary Steggall.



### TRAIL GUIDES

---

Wasatch Trails \$1.50

HIGH UINTA TRAILS \$2.95

Cache Trails \$1.50

Wind River Trails \$2.95

postpaid from:

Wasatch Publishers, Inc.

4647 Idlewild Rd.

Salt Lake City, Ut. 84117

We must imagine...voiceless eons spent in the silent war of ice and wind...an emptiness of time that can be matched only by the emptiness of space; ages explored only by the dark wind that must always have been there; silence broken only by the occasional clatter of a rock...or the wet hiss of an afternoon avalanche.

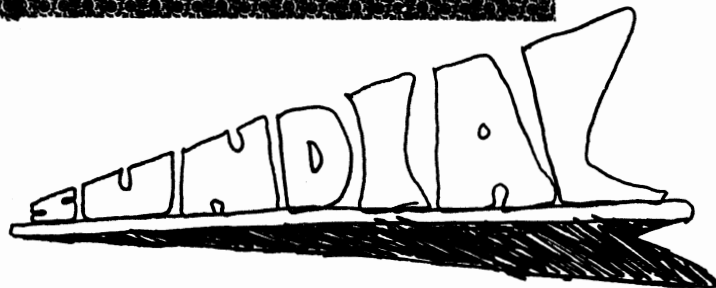
David Roberts,  
The Mountain of My Fear

# White Pine Lake

August 31

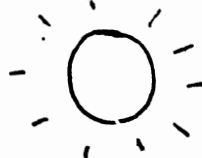
by Carl Bauer

The charm of White Pine was adequate atonement for some confusion regarding trails. A wealth of flowers and Lloyd's rock and mineral knowledge became choice dividends for our appreciative participants: Sally L. Lydy, Brian B. Fox, James Hughes, Jim Curtice, Beth Hibberd, Lloyd Clyde and Carl E. Bauer.



September 21

by Larry Swanson



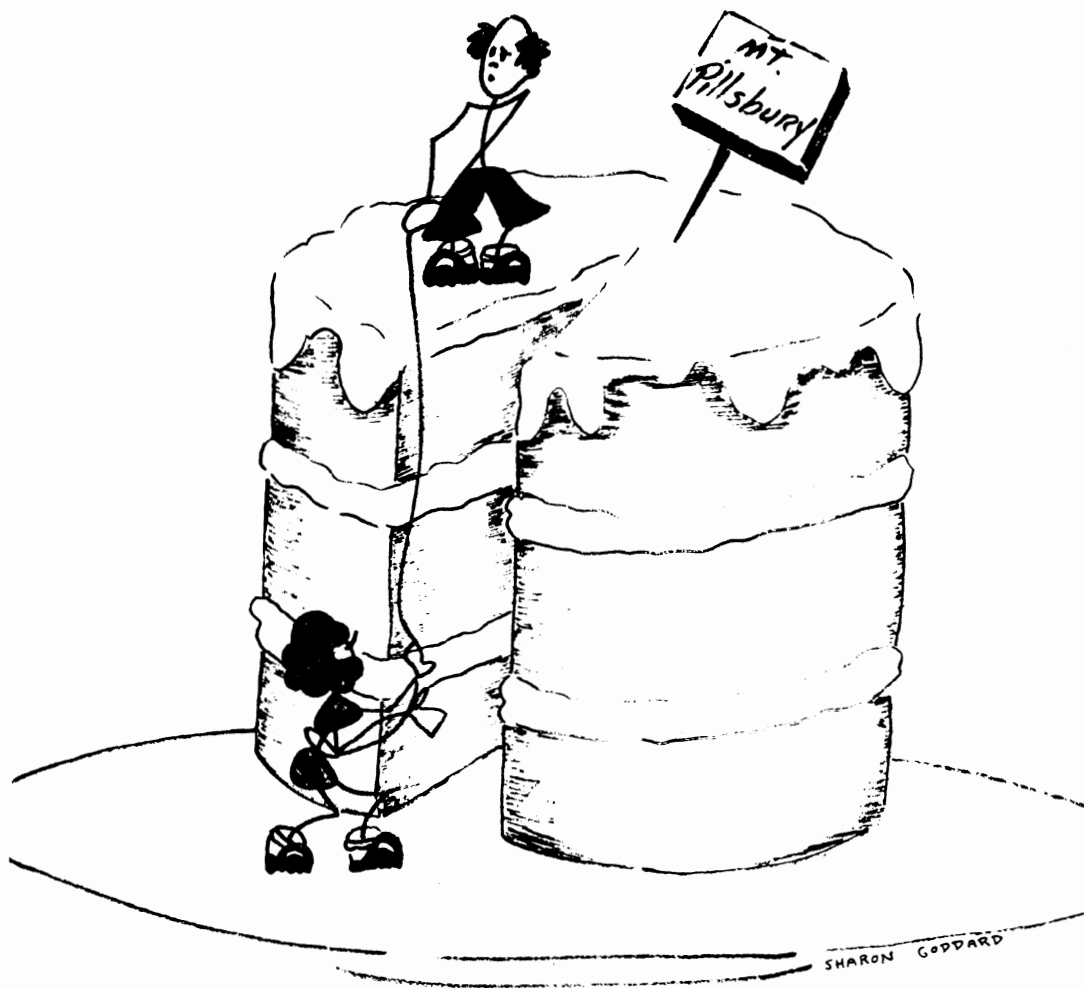
The twilight hike out from the Sundial climb each fall pretty well finishes the bigger stuff of the year for all of us. The early fall frost on the trail evaporating in the splash of sunlight, made offerings from the watermelon man almost inappropriate. Fall is upon us, and those who passed up Sundial may well have to settle for lesser things until next season.

The climbing was of first order. Two thin intersecting routes quite a bit left of the nose were climbed by Mason-Baty and Gottman-Cole. This is relatively unexplored country and very sustained climbing. A direct line through the summit cap is possible which lessens the congestion on the upper nose. Marsh, Mark and Mark moved to the right for a very difficult F7 route to the scree ledge. Lew and Bob took the classic route straight up the nose in very good style, while George and Mike did the difficult "Pino Solo Direct" just left of the nose. Stevens and Swanson sort of rambled around the face taking pictures and offering encouragement. Being an experience climb, some emphasis was put on what to do and what not to do--forgetting climbing boots at home (leader) was listed as a "not to do."

Sundial is five to eight pitches of F5-F6 with a little F7 and A1 thrown in. The high caliber climbing reflects the Horton-Gottman leadership of the last few years.

Leader: Larry Swanson. Climbers: Marshall Ralph, Mark Ebaugh, Bob Bamford, Audrey Stevens, Lew Hitchner, Bonnie-Jeanne Baty, John Mason, Mike Hendrickson, John Cole, Mark Brabakis, George Westbrook and Watermelon Man. Hikers: Eric Keller and Mike Brown.





"IT'S A PIECE OF CAKE!"

- The Watermelon Man

# **Guide to Ski Touring in the Wasatch**

by Dave Hanscom and Dwight Nicholson

The difficulty of a ski tour is not easy to define. It depends to a large extent upon the condition of the snow, which varies from one day to the next, (and even from one hour to the next) due to snowfall, wind velocity, air temperature and the location of the route relative to exposure to wind and sun.

It also depends upon the weather, the physical condition of the tourer, the particular route chosen, and equipment.

For Nordic skiers, correct touring technique and ability to choose the proper wax makes all the difference in the world. The only parameters that are constant on a ski tour are the vertical rise and the horizontal distance.

With these facts in mind, an attempt has been made to rate the ski tours in the Wasatch. The rating system is in the form (X,Y), where X describes the difficulty of the climb, and Y indicates the skiing proficiency required to get down. Both are rated from 1 to 6, in order of increasing difficulty. For example, Day's Fork is rated (2,4); it involved a relatively short climb of 1900 feet in 1.5 miles from Alta, but the descent includes an extremely steep bowl where avalanche danger can be quite high. These numbers are necessarily relative, and are meant only to give the tourer a general idea of the required ability level necessary under good skiing conditions.

To put the skiing proficiency part of the rating into perspective, a comparison can be made to slopes at the ski areas. Skiers with ability to handle Main Street, Pay Day or Majestic with confidence could take tours rated 1 or 2; they should have mastered the kick turn, however, for the sections where it is the only alternative to turning in the powder. Nordic skiers should also be able to manage these tours with good snow conditions, particularly the ones with long run-outs. A rating of (3) requires intermediate skiing skills, as would Collins Face, Bob's Bowl, Millicent, or Thaynes; ability to turn in unpacked snow becomes more important. The higher rated tours are for advanced skiers who can manage any snow conditions; sometimes the survival instinct helps, too.

The table on the opposite page (much of which is taken from a December 1968 RAMBLER article by Charles Keller) contains data on 37 of the most popular tours in the Wasatch. They are listed in approximate order of difficulty to assist your go/no go decision.

This year we have decided to add the the general ratings a column for Nordic Ability and/or suitability. The rating here is Beginner (B), Intermediate (I), Advanced (A), and Not Advised (N/A). Beginner would be the person who has

only been on Nordic skis a few times, and has a lot of difficulty with down-hill sections. Intermediate ratings would refer to those people who have been out a number of times and can do a good stop and kick turn, or an adequate stem turn. The advanced tours are for those who can handle most everything on Nordic skis given decent snow conditions. We have also noted those tours that are not advised for Nordic skis, mainly because the slope is so severe, or the snow conditions are so poor, that it would be a survival situation on Nordic skis.

It is suggested that you not go on a tour that is much farther down the list than the most difficult one that you have taken in the past. A skier who goes on a trip that he can't handle not only endangers and discourages himself, but he compromises the enjoyment of the entire party. If in doubt, the tour leader or ski touring director will be happy to advise you.

A map of the ski touring routes in the Alta-Brighton area is available from the Wasatch National Forest office at 3070 E. 3300 S.

One final comment should be made regarding ski tours taken by individuals who like to get out on their own. Snow conditions in the Wasatch are extremely variable, and thanks to our large accumulations, avalanche danger can be extremely high. It is advisable before going on a tour to ascertain that the snow is safe in the area, to never go alone, and to let someone know your route and schedule. The Forest Service Alta Guard Station will provide information on weather and snow conditions, but they cannot be responsible for deciding if you should take the tour. Your own common sense must be your guide.

## SOME GOOD REASONS TO DROP BY

- FREE SATURDAY CROSS COUNTRY CLINICS
- BEST RENTAL PRICES IN TOWN
- FREE THURSDAY NIGHT LECTURES
- ICE CLIMBING & MOUNTAINEERING CLASSES
- WINTER CAMPING GEAR FOR RENT



3155 Highland Dr. • Phone 466-2101  
Salt Lake City, Utah 84106

Description	Lift	ASCENT		DESCENT		Rating	Nordic
		Dist.	Vert.	Dist.	Vert.		
Wolverine Cirque from Brighton	Millicent	.7	350	1.6	1330	1,2	I
Lake Solitude		1.4	300	1.4	300	1,2	B
Snake Creek Pass from Brighton	Majestic	1.0	840	1.4	1240	1,2	B
Catherine Pass from Alta	Albion	1.0	740	2.3	1680	1,2	B
Alta from Brighton via Twin Lakes Pass	Millicent	1.1	275	1.1	1430	1,2	I
Dog Lake via Mill d - North		2.3	1460	2.3	1460	2,2	B
Mill F		2.2	1000	2.2	1000	2,2	I
Desolation Lake via Mill D - North		3.3	1960	3.3	1960	2,2	B
Catherine Pass from Brighton	Majestic	1.5	1020	1.8	1440	2,2	I
Mill Creek from Park City West (to Log Haven)	P.C. West	.5	150	7.7	3300	1,2	I
Park City from Brighton via Scott's Pass		2.0	700	3.8	2500	2,2	I
Brighton from Park City via Scott's Pass	Gondola	1.8	400	2.0	700	2,2	I
Honeycomb from Solitude (to cirque)		3.0	1400	3.0	1400	2,2	I
Mineral Fork		2.9	1890	2.9	1890	2,2	I
White Pine Lake, Red Pine Lake		2.7	2400	2.7	2400	3,2	I
Honeycomb from Brighton	Evergreen	.6	500	3.5	2140	1,3	A
Mt. Wolverine from Alta	Albion	1.2	1205	1.8	2035	2,3	A
Silver Fork from Brighton via Twin Lakes Pass	Millicent	1.6	470	2.8	2460	2,3	A
Mill Creek from Mill D No. via Dog Lake (to Log Haven)		2.3	1460	6.4	2900	2,3	I
Cardiff Fork from Alta		1.0	1360	5.9	2750	2,3	A
Silver Fork from Alta		1.8	1610	2.8	2510	2,3	A
American Fork from Alta (to S. Fork Ranger Station)	Sugarloaf	.3	160	12.6	4450	1,3	I
Mary Ellen Gulch from Alta (to S. Fork Ranger Station)	Sugarloaf	.3	160	10.6	4450	1,3	N/A
Neff Canyon		3.2	3960	3.2	3960	4,3	N/A
Days Fork from Alta		1.5	1890	3.5	3140	4,4	A
Major Evans Gulch from Alta (to S. Fork Ranger Station)	Sugarloaf	2.9	480	7.4	4770	2,4	N/A
White Pine from Alta	Sugarloaf	3.4	330	3.0	3140	3,4	N/A
Mt. Raymond via Butler Fork		3.5	3140	3.5	3140	4,4	A

Description	Lift	ASCENT		DESCENT		Rating	Nordic
		Dist.	Vert.	Dist.	Vert.		
American Fork from White Pine via Silver Lake (to S. Fork Ranger Station)		3.4	3030	7.6	580	4,4	N/A
Maybird from White Pine		3.4	2440	2.0	3175	3,5	N/A
Alpine from White Pine via Dry Creek		3.7	3000	6.5	5560	4,4	N/A
Hogum from White Pine		3.6	2700	3.1	3660	3,5	N/A
Alexander Basin from Butler Fork (to Log Haven)		3.6	3145	5.4	4140	3,5	N/A
White Pine from Alta via Twin Peaks	Sugarloaf	2.4	1075	4.0	3875	3,5	N/A
Major Evans Gulch from Alta via Twin Peaks (to S. Fork Ranger Sta.)	Sugarloaf	2.4	1075	8.1	5360	3,5	N/A
Mineral Fork from Alta		2.3	2180	3.1	4160	3,5	N/A
Lake Blanche from Alta		1.9	2060	4.3	4500	3,5	N/A

# CAKE SOLITUDE to TWIN CAKES

September 20 by Gus Hanniball

It was a beautiful day and the rating was low (2.0), which was a good thing, since the leader and some participants had been engaged in Lodge wood-gathering the day before.

There were some early complaints by the three kids that went along that they found the going touch, but all seemed in fine health at the conclusion and proud of their accomplishment.



Leader: Ruth Holland. Participants: Grace and John Burton, Gus Hanniball, Hannelore Janke, Joyce Sohler, Elizabeth and Maki Tamura, and Jim and Jane Wheeler with Allison and Amanda.

**When only the best will do.**  
THE FINEST IN SKI EQUIPMENT









**ROSSIGNOL SKI COMPANY INC.**  



service · sales · rentals  
**OVERNIGHT SKI SERVICE**  
 Pick-up and delivery at most  
 Salt Lake Fine Hotels



**THE MOUNTAINEER**  
 207 South 13th East  
 and now at  
**TROLLEY SQUARE**  
 Phone 582-2338

# NOTES ON '75 SKI TOURING

S. NELSON

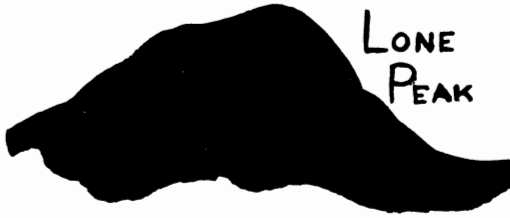
It appears that this might be an early snow year for a change, and with the Wasatch getting its new season of white, most of you are thinking about getting out those skis and snowshoes and seeing how they survived the summer storage. We will be having a Ski Touring Day at the lodge on Saturday, November 15th to get everyone psyched-up for the coming season--talk equipment--and help any new tourers with some of their questions. We will have a short tour if there is sufficient snow, and have some movies and slides for later in the afternoon. Dinner will be provided for those interested in staying, but it would be advisable to bring your lunch, for we will start at 11 a.m.

I would like to say something also about avalanches and the Wasatch. There is a very real reason why the Forest Service has placed an Avalanche Study Center at Alta. The Wasatch is famous for avalanches. The combination of steep terrain, heavy snowfall and variable temperatures make it a prime avalanche area. I don't want to frighten potential tourers from skiing, but I do want to make people aware of some of the dangers. There is a good book on the subject, The ABC's of Avalanche Safety by Ed LaChappelle, that you could pick up if you are new to the Wasatch. In January we will be holding a two-day avalanche school to discuss the problem in more detail. I will try to keep abreast of the snow conditions as they relate to avalanche danger this year. If you have any questions, you can call me at 359-6178. Avalanche cords and probes will again be required on advanced tours and they can be rented from the tour leader or can be purchased from Dave Hanscom. I really hope this will be another enjoyable and safe touring year.

I am hoping to have a nordic and snowshoe tour every weekend, with the more advanced nordic and alpine tours alternating weekends. I will try to get some mid-week tours into the schedule, and if I can coordinate to full moons, some moonlight tours. I would like to also offer some more exotic or overnight tours, so if any of you want to lead a trip along those lines, I would really like to hear from you.

Later in January we will also be having a day of touring practice for nordic skiers. This course will attempt to go beyond the Timberline-type beginner course and if not make you proficient on cross-country skis, at least teach you some tricks for survival. I think this should be a great season for snow and I hope to see you all out in our great winter mountains.





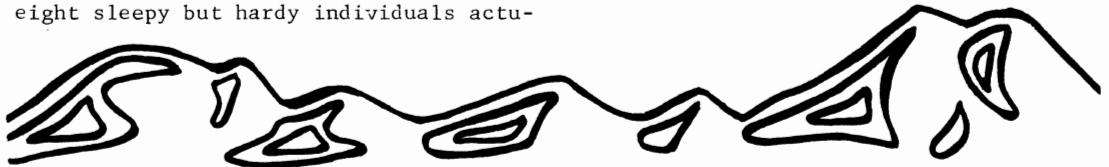
by Robert N. Weatherbee

Early (very early) on the morning of September 21st, four somewhat groggy but hardy souls arrived at Draper Crossroads, the designated meeting spot for the hike. Unfortunately, the leader had not bothered to check out the meeting spot with the person who wrote the write-up. Consequently, there was some doubt in everyone's mind as to exactly where the meeting place was. Who knows, maybe eight sleepy but hardy individuals actu-

ally showed up for the hike. In any event the leader was only able to find three others and they proceeded to the end of Movie Road for the start of the rather long trek. It was a gorgeous day; little more could have been asked for in the way of weather. The temperature was just perfect for hiking and when the top was reached, it was a very comfortable 65-70 degrees with very little wind. All four made the summit although not in exactly record time. The trip down proved to be as uneventful as the trip up, and by 4:00 the bottom had been reached. 3/4 of the group then retired to Demet's Tavern for post-hike R & R.

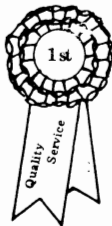
Leader: Bob Weatherbee.

Hikers: Judy Weatherbee, Randy Taylor and Bob Schlegel.



BLUE RIBBON HOMES -- DESIGNED TO CONSERVE ENERGY!

- double-pane main windows
- heavy insulation
- functional fireplaces
- precision construction
- 8½% interest for a limited time
- SAM ALLAN    487-8901    942-3149  
(home)



**BLUE RIBBON** REALTOR

2870 EAST 3300 SOUTH •

# Snake River Review

August 30 - September 2

by The Trusty Scribe

Much pushing and shoving by Stew Harvey and his band of followers had one U-Haul trailer loaded with gear and one van loaded with people by 6:45 p.m. August 29 (Friday evening). Although reduced to an absolute minimum of two boats and 11 rafters by cancellations, the WMC was off to run Hells Canyon for the first time since 1970. The weather outlook for the Seven Devils region offered hope of not repeating the cold, rainy trip of five years ago. The all-night drive for the van and the shuttle car was punctuated by the usual stops: for people (pick up Chuck Denton in Ogden), gas (thrice), food (successful), booze (unsuccessful), and changing drivers (often). Passengers resignedly propped feet on the ceiling and heads on each other, sleeping fitfully until somebody noticed that Saturday was dawning bright and clear. We drove along the upper section of the Snake, where dam after dam has reduced the free-running river to a series of long ponds. A gravel launch site below the last dam was the scene of boat-blowing-up, rigging, breakfast, permit-gaining (no open fires allowed, to the distress of several kayakers who had no stove and therefore couldn't get a permit), and onto the river by 10:30 a.m.

Only an hour brought us to The Biggie -- Wild Sheep Rapid, rated 9. As usual, the scouting produced much discussion of several alternate routes, and an agreement to take one boat through at a time for picture-taking purposes. This rapid is much like the top of Hells Half Mile on Lodore: skim just left of an entry rock, move the boat across river to the right to miss a rock and an 8-foot drop, instantly turn downriver again straight into the first hole, and come up into the teeth of the waiting curler. A superb run according to plan by the first boat included a well-timed move by both bow men: they threw their weight forward at the instant the curler hit to force the bow down as it smashed through the white water. The smug satisfaction of the first boat crew was slightly diminished as the second boat showed how to come through upright even after breaking two paddles on the left side. Oh well...lunch time.

The second big rapid was run without scouting, but according to the directions on the map, just as well. The crew on the right side swore they saw a dry river bottom 15 feet below the boat! Your scribe doubts the veracity of that statement, but during that time he was busy steering to keep the boat out of a hole that had no visible bottom! (Same hole?) The afternoon was long after all that excitement, and we finished dinner after dark. There was a pattering of rain that night.

Sunday's run down to the old ghost town of Eureka was a series of smaller rapids but with good standing waves in most. Everyone had a chance to captain for awhile. The only water fight of the trip took place in a warm afternoon sun. Evidently afraid we would have too good a night on the town (?), Stew made camp well below Eureka. But happy hour proved every bit as fun; in fact, we finished dinner after dark again.



The third day brought rain and lower temperatures. The motor started with some effort, but ran all the way to the 2:00 p.m. takeout at Heller Bar, in sight of the van and trailer. Stew was unsuccessful at getting the van stuck in the soft sand more than twice. This was in no small measure due to everybody else who, giving up pushing after he was well dug in, decided to push him while he was getting stuck; we kept him from succeeding a third time! We dropped Stewart O. at the Lewiston airport for his 5:00 p.m. plane, and continued on down the Idaho side looking for a campground. A 12-mile drive off the main road brought us to one called Slate Creek, a veritable rain forest of moss-hung trees and lush undergrowth. We enjoyed an amazing spaghetti mixture by our first campfire-light.

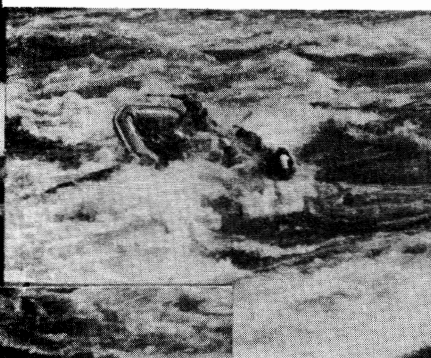
The breakfast crew had the fire going at six; we were off by nine and back in Salt Lake by eight that evening. And who could ever forget that strange concoction of everyone's leftover gorp in a big coffee can, garnished with brittle dried apricots on top, which was passed around alternately with a smaller can of "fruit compost"? Are we all alive today? If not, then kindly honor the picture below, published posthumously, of the participants (left to right): Mike Treshow, Mike Zavortink, John Schell (1st day captain), Sue Curtis, Stew Harvey (trip leader), Audrey Stevens, Chuck Denton, Wayne Slagle, John Cole and Pat Baudelaire. The photographer and also 1st day captain was Stew Ogden. The shuttlers were Ken Harshman and Pam Shepard.





Ogden photo

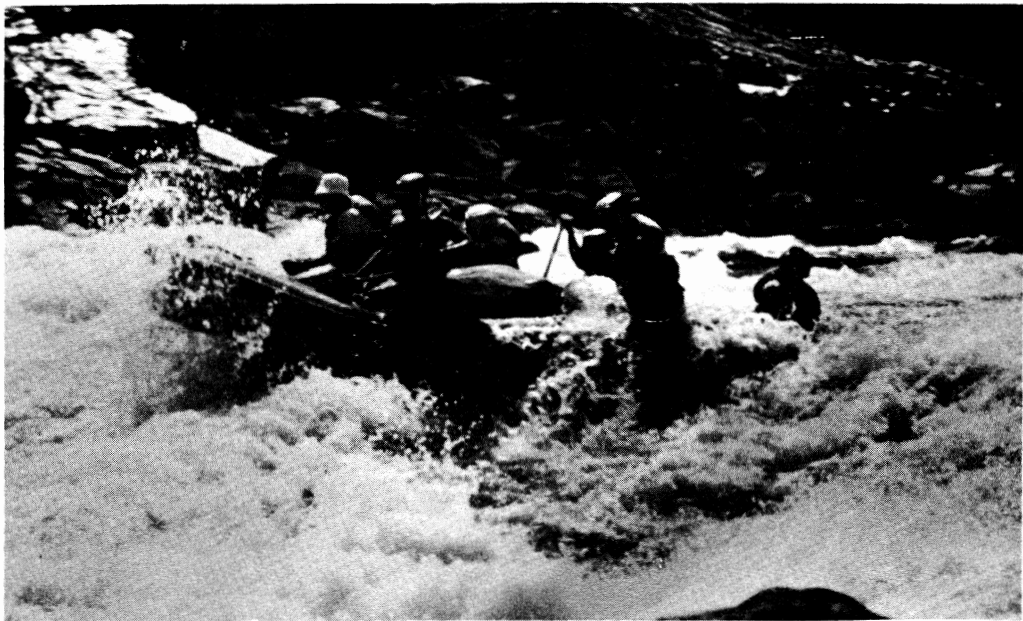
"Why did I ever take on this trip?"



The first boat,  
finding out that  
Wild Sheep Rapid  
lives up to its  
name.



From slides by  
John Cole.



The second crew enjoying Wild Sheep (and breaking their paddles)



"What's left to conquer? We can do it! (I think)"

Photos by Stew Ogden

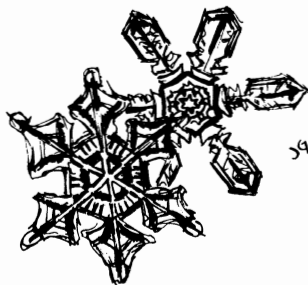
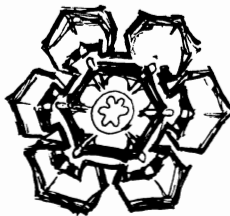
# Lake Blanche

September 14

by ?

The 14th of September dawned a beautiful, late summer day, and the rains of the day before made everything bright and green. Seventeen of us met at the mouth of Big Cottonwood Canyon, and after combining rides, moved on up to Mill B, south fork. By 9:30 we were on the trail, moving at various speeds up toward Lake Blanche. There we reconvened and ate a leisurely lunch on the rock slabs overlooking the lake. We were joined by late starters who made it up in speed, and headed on toward Sundial as we started down. It was most enjoyable to just relax, visit, and enjoy the beautiful day before turning around and heading back toward our various enterprises in the valley.

Participants in the hike were: Stephen Morris, Mark Rottacher, Jeff Dawson, Sylvia Weber, Lynne Larsen, Ivan Cendese, Pete Pedersen, Ali Atash-roo, Doug Stark, Judy Davis, Jaelene Myrup, Charlie Keller, B. Matogo, John Marks, Ken Miller, Debbie Scannon, and the leader (from the rear), Priscilla Horton.



39

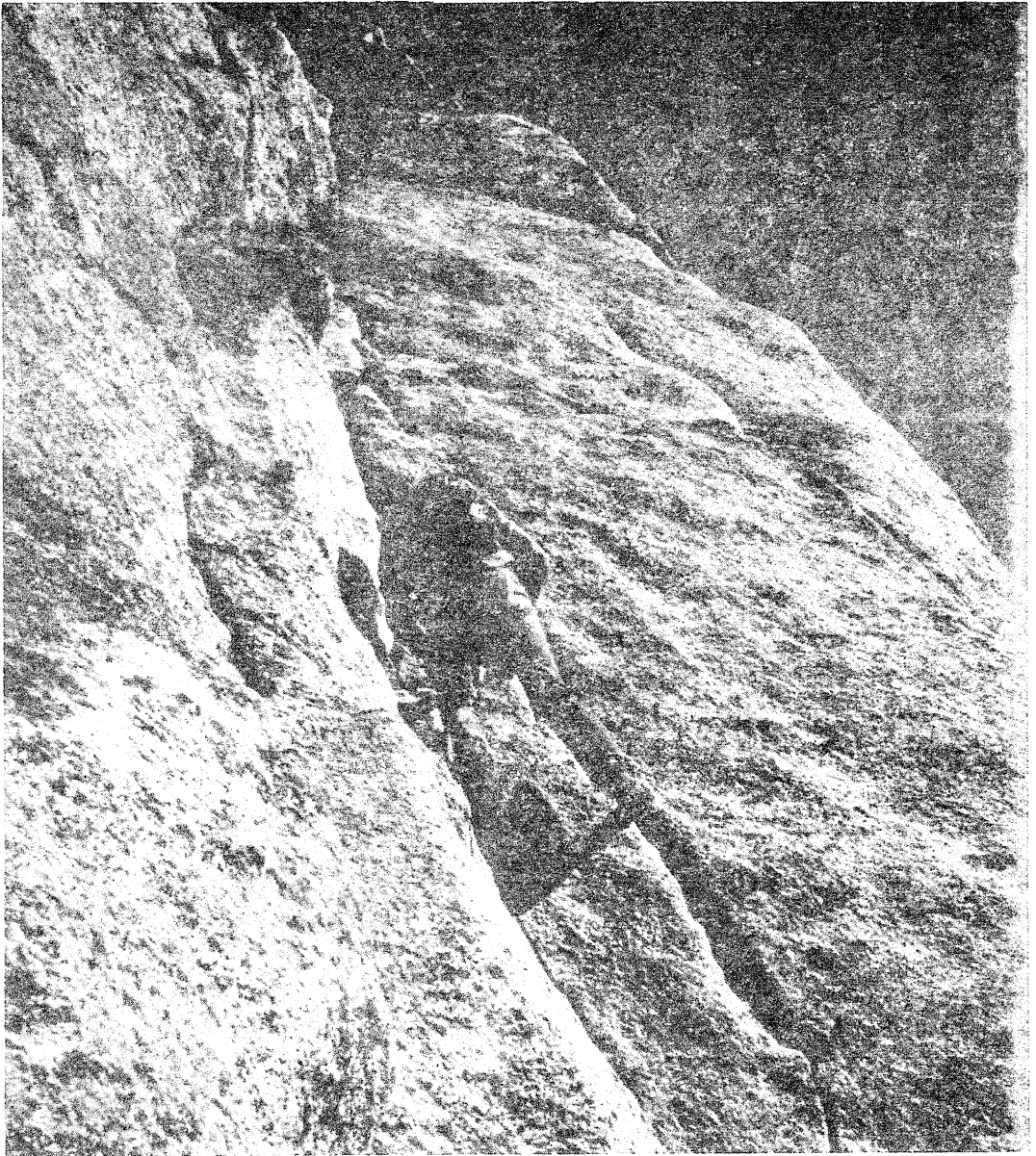
# Thaynes Canyon to Neffs Canyon

September 21

by Janelle Rouze

Elmer Boyd got lost! Imagine! Elmer, of all people. The hike began as Elmer led us up Desolation Trail. After a while we noticed the trail had disappeared. Shortly we were bushwhacking-- and bushwhacking--straight up to the edge between Thaynes Canyon and Neffs Canyon. After lunching on a steep slope, we continued bushwhacking in search of that elusive path. Finally Elmer saved the day by locating an excellent trail. We hiked down Neffs Canyon enjoying the thick foliage resplendent in red and gold. The weather was perfect--sunshine with a touch of coolness. Memories of bushwhacking faded as we thought only of the beautiful Wasatch Mountains.

Leader: Elmer Boyd. Hikers: Trudy Healy, Milo Hendricks, Theresa Overfield, Mary Jo Sweeney, Pat Sweeney, Yukio Kachi, Stewart Ogden, Stephen P. Morris, Jeff Dawson, Ann Wennhold, Fran Flowers and Janelle Rouze.



But what says Socrates? "One man finds pleasure in improving his land, another his horses. My pleasure lies in seeing that I myself grow better day by day."

- Epictetus

John Mason leading a pitch on the south ridge of Haystack Peak, Wind Rivers, July 26. From a slide by Lew Hitchner.

A P P L I C A T I O N   F O R   M E M B E R S H I P

WASATCH MOUNTAIN CLUB  
3155 Highland Drive  
Salt Lake City, Utah 84106  
363-7150

NAME (Print) \_\_\_\_\_ Telephone \_\_\_\_\_

Name of spouse (only if spouse wants membership also) \_\_\_\_\_

Address \_\_\_\_\_ ZIP \_\_\_\_\_

Occupation (Optional) \_\_\_\_\_

I hereby apply for membership in the Wasatch Mountain Club and enclose \$ \_\_\_\_\_ as my annual membership dues for the year \_\_\_\_\_, \$ \_\_\_\_\_ of which is for a subscription to the Rambler for the year and \$4.00 entrance fee. (If joining during January thru August, dues are \$6.00 of which \$5.00 are for a Rambler subscription -- Spouse dues (non-subscribing) are \$3.00 additional. If joining during September thru December, dues are \$3.00 of which \$2.50 are for a Rambler subscription -- Spouse dues (non-subscribing) are \$1.50 additional. Add \$4.00 entrance fee to each application, single or couple. Subscriptions are not deductible from dues.) I (do) (do not) desire to receive the Rambler.

I have attended two Club activities in the past 12 months as required for membership such as hikes, ski tours, camping trips, rock-hound trips or work parties and have been recommended by two trip leaders who are Club members. Events such as lodge parties, winter socials, lectures, meetings, etc. are not activities qualifying for membership. I agree to abide by all the rules and regulations of the Club as specified in the Constitution and Bylaws as determined by the Board of Directors.

I am specifically interested in the items checked below:

Hiking \_\_\_\_\_ Ski Touring \_\_\_\_\_ Boating \_\_\_\_\_ Mountaineering \_\_\_\_\_ Cycling \_\_\_\_\_

Conservation \_\_\_\_\_ Writing and Editing \_\_\_\_\_ Organizing social activities \_\_\_\_\_

Lodge Work \_\_\_\_\_ Photography \_\_\_\_\_ Other \_\_\_\_\_

CLUB ACTIVITIES ATTENDED:

1. \_\_\_\_\_ Date \_\_\_\_\_ Signature of recommending Trip Leader \_\_\_\_\_

2. \_\_\_\_\_ Date \_\_\_\_\_ Trip Leader \_\_\_\_\_

(Note: The signature of a Director may be substituted for one Trip Leader.)

\_\_\_\_\_  
Signature of Applicant



A clear, sunny Sunday, cool for August, and a variety of flowers along the trail. The challenge of finding another route to a favorite spot, leaving the Red Pine Trail above the mine. A pleasant, leisurely lunch at the far end of upper Maybird. Clear, cold water for drinking, and a good view of the Pfeifferhorn. Casual, friendly conversation along the trail.

August 24, 1975

by Ruth Holland

The usual strung out hiking format due to variations in members' 1, basic hiking ability; 2, adaptability to altitude; 3, new boots; 4, interesting companions; 5, hangovers; and 6, confusion as to which was the right way, or some combination of the above.

Those enjoying this hike led by Mike Hendrickson were: Vic Garside, Chris Rickly, Mary Welch, Jaelene Myrup, Elmer Boyd, Paul Baumgartner, Joe Browning, Angie Famiglio, Bill Kolther, Bill Seeger, Jean Daugherty, Anne Dolinka, Doug Stark, Jim Eisenberger, Elizabeth Liebergesell, Monica Liebergesell, Mike Liebergesell, Ruth Holland, Leona Sabine, Richard Conn, Lois Craig, Hannelore Janke, Paul Rubefeld, and John Marks.



September 27 by Mike Hendrickson

Nine hikers assembled and headed up Big Cottonwood Canyon to Mill D North. From the parking area, we made good time through the fall foliage to the lake. There at the lake we spent a leisurely time eating, relaxing and watching the cyclists using the trail. After lunch came a slow-paced trip back to the cars and then back down the canyon. Hikers: Ruth Henson, Leslie Speaks, Katie Hedburg, Verne and Willa Huser, Judy Weatherbee, Bruce Beaver, Gary Hill and leader Mike Hendrickson.

STATEMENT OF OWNERSHIP, MANAGEMENT AND CIRCULATION (required annually of all 2nd class permit holders)

THE RAMBLER is published monthly by the Wasatch Mountain Club, Inc., 3155 Highland Drive, Salt Lake City, Utah 84106. This address serves both the publication office and the general business office. The Editor is Audrey C. Stevens, Timberline, Park City, Utah 84060. The Managing Editor is Michael Treshow, 1798 Millbrook Rd., SLC 84106. THE RAMBLER is wholly owned by the Corporation, above, which is a non-profit corporation. There are no individual owners, bondholders or other security holders. 650 copies were printed in the last (October 1975) press run.



**WASATCH MOUNTAIN CLUB, INC.**

3155 Highland Drive, Salt Lake City Utah 84106

Vol. 52, Issue 11 (1975)

SECOND CLASS  
POSTAGE PAID  
AT SALT LAKE  
CITY, UTAH.**BOARD OF DIRECTORS**

DALE GREEN	PRESIDENT	277-6417
JUDY DAVIS	SECRETARY	272-6435
MEL DAVIS	TREASURER	278-3174
KEN McCARTY	BOATING	466-3297
MIKE OMANA	CONSERVATION	561-4537
PEGGY TAYLOR	ENTERTAINMENT	272-4624
MIKE HENDRICKSON	HIKING	484-2640
DANNY THOMAS	KAYAKING	561-8606
DESIREE (DIZ) MAYS	LODGE	582-3818
JUDY WEATHERBEE	MEMBERSHIP	272-5510
JOHN GOTTMAN	MOUNTAINEERING	359-4693
AUDREY STEVENS	PUBLICATIONS	(1)649-9884
DWIGHT NICHOLSON	SKI TOURING	359-6178