

# *The Rambler*

APRIL 1976 Vol. 53, Issue 4



Official Publication of THE WASATCH MOUNTAIN CLUB

# News and Notes

**SAY CLIMBERS!** If anyone is free to climb during the weekday, please let John Gottman or Audrey Stevens know.

**COVER PHOTO:** An ecstatic winter mountaineer, caught by Renny Jackson. For reasons why John Gottman is smiling, see pages 11,12 of this issue.

## Thanks

...to Dale Green for mailing the April RAMBLER.

...to Lois Craig, Adrian Stevens, Joyce Sohler and Larry Hoskins for help in every department!

## Rambler Headline



# The Righteous Statement

THE RAMBLER is published monthly by the Wasatch Mountain Club, Inc., 1355 Highland Drive, Salt Lake City, Utah 84106, tel. 363-7150. Subscription rates are \$5.00 a year. Note: Subscriptions are paid for by membership dues only. Prospective members may obtain 2 months' free RAMBLERS by contacting Club headquarters or the Membership Director. All correspondence regarding changes of address, mailing, etc. may be directed to the Membership Director at the address above. Second Class Postage paid at Salt Lake City, Utah.

...for MAY is April 15, Thursday. Please have your articles and schedules typed, pictures and slides protected, and mail or drop by to:

ATTENTION: RAMBLER EDITOR  
Wasatch Mountain Club  
3155 Highland Drive  
Salt Lake City, Utah 84106

The Wasatch Mountain Club is governed by a Board of Directors - 13 representatives elected by the membership. Through the courtesy of Timberline Sports, our mail is sent to their address, 3155 Highland Drive, for collection only. The Club's telephone is located at O'Dell's Shoe Repair Shop, 425 South 8th West. This phone is maintained as an answering service only by Life Members 'Pete' (O'Dell) Peterson and wife 'Pinky'. They take time out from their work to answer the phone and relay incoming messages to the proper Director. The Petersons do not hold any office, or attend Board meetings, or are they informed by the Board of official actions. If a trip leader cannot be contacted or is not specified, call the Director of that department for information. The Board strongly desires to hear comments, suggestions, inquiries, and criticisms concerning the operation of your Club. Please feel free to phone any Director or write to the President. Names will be withheld upon request, but anonymous letters will be disregarded.

Mountain Club business is conducted only on the first and third Wednesdays of each month. At that time, and only at that time, is the mail opened, new membership applications voted on, dues payments recorded, address changes made, and all other business requiring board action conducted. All board members cannot attend all board meetings and although an effort is made to fill in during a member's absence, some business is held for action until the next meeting.

# Club Activities for April '76

**REGISTRATION INFORMATION:** Registration is generally not required for members participating in easy or intermediate hiking (rating below 7.0). Unless specifically stated, advanced hikes (rating above 7.0) require registration with the leader. Adequate equipment is a must. You cannot participate in these events if you have not shown your ability on other hiking activities and if you do not have adequate and

well broken in boots with good Vibram-type soles and suitable protective clothing. Special equipment like an ice axe etc. may also be specified and you are required to be able to handle such equipment. Remember that these restrictions are set for your own safety and that of your fellow members. For rules regarding participation of children, consult the May Rambler 1974.

APRIL 1  
Thursday

All Fools' Day, which brings out the first EVENING CLIMBING SESSION AT PETE'S ROCK. This is located at approximately 5500 S. Wasatch Blvd. Great sunsets and, hopefully, dry rock!

APRIL 3-4  
Sat.-Sun.

OGDEN SIERRA CLUB - X-Country Overnight Tour. Durst Mountain via Cottonwood and Arbuckle Creeks. Meet at the Wilshire Theatre at 9:30 a.m. Moderate rating to campsite; difficult to peak. Leader: Dale VanMetre, 1-394-4927.

APRIL 3  
Saturday

INTERMEDIATE ALPINE-NORDIC TOUR, UPPER ALBION BASIN, PT. SUPREME. The leader promises some good downhill skiing in this high bowl -- a good time to practice those telemark turns. Meet at the mouth of Big Cottonwood at 9:30 a.m. Leader: Charlie Keller, 484-2640.

APRIL 3  
Saturday

FOOTHILL I. This will be a warmup hike to stretch the muscles and to build up conditioning. Meet at the lower gate of City Creek Canyon at 9:00 a.m. Leader: Carl Bauer, 355-6036.

APRIL 4  
Sunday

ADVANCED NORDIC TOUR - KINGS PEAK. We will attempt the highest peak in Utah (13,528 ft.) on a one day tour, so you must be prepared for a 16 to 20 hour trip. Register with the leader, Dwight Nicholson, 359-6178.

APRIL 4  
Sunday

BIG BEACON. El. 7142 Rating 3.0 This is a popular spring hike to the peak with the big screens near the summit. Meet at the northeast corner of the Hogle Zoo parking lot at 9:00 a.m. Leader: Elmer Boyd, 583-2292.

- APRIL 5  
Monday KAYAK POOL PRACTICE, Cottonwood High School, 8:00-10:00 p.m.  
\$1.00 per person. Questions? Call Dan Thomas, 561-8606.
- APRIL 8  
Thursday EVENING CLIMBING AT PETE'S ROCK. See April 1 for directions.
- APRIL 9  
Friday ANNUAL RIVER RATS' PARTY. This boating bash will put in at 7:30 p.m. at the Lodge. Chips and dips will be provided, beer and wine will be available for a nominal fee. Bring slides, movies, snapshots, etc. of past trips in order to share them with past, present and future River Runners. Information on the river running program generally and the schedule for the coming season in particular will be provided for new and prospective participants. Host is Bob Weatherbee, 272-5510. The Lodge will be open for overnigheters.
- APRIL 10-11  
Sat.-Sun. LODGE AVAILABLE for WMC members. Anyone interested call Randy Taylor at 272-4624 for details.
- APRIL 10  
Saturday FOOTHILL II. This is a continuation of the warmup hikes and will be in the area of Pencil Point and beyond. Meet at the parking lot by the Regency Theatre and K-Mart parking lots at 9:00 a.m. The leader could use a ride and lives on the Avenues. Leader: Carl Bauer, 355-6036.
- APRIL 10  
Saturday INTERMEDIATE NORDIC TOUR - WILLOW CREEK TO DESOLATION LAKE. This is a fairly long tour but should be fine for intermediate nordic skiers. Meet at the mouth of Big Cottonwood at 9:30 a.m. Leader: John Gottman, 359-4693.
- APRIL 11  
Sunday SOUTH RIDGE OF SUPERIOR CLIMB. This will involve an early start, substantial exposed scrambling, some roped pitches, and probably a late slog out. The number of climbers will have to be limited. Ice axes, very good conditioning, and excellent conditions will be required. Call the Mountaineering Director for information and registration.
- APRIL 11  
Sunday ADVANCED ALPINE-NORDIC TOUR. This will go wherever the spring snow looks best. Please register with the leader, Phil Ryan, 355-1591.
- APRIL 11  
Sunday INTERMEDIATE-ADVANCED ALPINE TOUR, DAYS FORK. This is a very nice route that is seldom done because the mouth is hidden somewhat. Come out and decide for yourself whether this side canyon should stay hidden. Please register with the leader, Charles Lesley, 484-0270.
- APRIL 11  
Sunday LITTLE BLACK MOUNTAIN. El. 8062 Rating 6.5 This is an excellent spring hike to the summit which is located between City Creek and Dry Canyon. This tour generally involves a lot of snow, so come prepared. Meet at the west end of the Shriners Hospital parking lot at 8:30 a.m. Leader: Mike Hendrickson, 484-2640.

APRIL 11  
Sunday  
OGDEN SIERRA CLUB. Gourmet X-country ski tour. Bring food and drink to share with the group. Moderate. Call leader, Steve Kerr, 1-393-4749 for details.

APRIL 11  
Sunday  
BOATING WORK PARTY. The Club's annual preseason work party will commence at 10:00 a.m. at the boat storage garage, 154 S. 7th East. We're starting early so that all the equipment may be moved to the new storage site at 4317 South 300 West, #214, Murray, Utah. Libations of various kinds will be provided. If you are interested in running rivers with the Club this season, the work party is a must activity. To facilitate moving, a couple of pickup trucks or vans would be appreciated. Anyone having same please call Bob Weatherbee at his office, 363-1454, or home, 272-5510.

APRIL 12  
Monday  
KAYAK POOL PRACTICE. See April 5 for details.

APRIL 15  
Thursday  
EVENING CLIMBING AT PETE'S ROCK. See April 1 for details.

APRIL 17  
Saturday  
FOOTHILL III. This is the final warmup hike and will head up the steep foothills to Hound's Tooth below Twin Peaks. Meet at the mouth of Big Cottonwood Canyon at 9:00 a.m.

APRIL 17  
Saturday  
THE FAMOUS ANNUAL GOURMET TOUR!. This is the only way to end the touring season. The food has been getting better and more exotic every year. Just bring some of your best gourmet fare and Gale and Ann Dick will once again lead us off in the sun to share good food and drink with friends. Skiers and snowshoers welcome. Meet at the mouth of Big Cottonwood at 10:00 a.m. Leaders: Gale and Ann Dick, 359-5764.

APRIL 17  
Saturday  
WEBER RIVER ICEBREAKER KAYAK TRIP. Meet at the second Henefer exit at 12:00 noon. Leader: Bill Sill, 278-1193.

APRIL 19  
Monday  
KAYAK POOL PRACTICE. See April 5 for details.

APRIL 22  
Thursday  
EVENING CLIMBING AT PETE'S ROCK. See April 1 for details.

APRIL 24-25  
Sat.-Sun.  
LODGE OPEN. Jude Whitehead is hosting if there is still enough snow for skiing. At any rate, call Jude at 966-0783.

APRIL 24-25  
Sat.-Sun.  
HORSESHOE CANYON. This feature lies on the north end of Canyonlands and offers some excellent petroglyphs and also magnificent scenery. We'll probably camp overnight in the canyon which will require backpacking. The number allowed on this trip will be limited. Call the leader for details and meeting place. Leader: Dorothy Holland, home (1) 649-8255 and business 328-3241.

APRIL 24-25  
Sat.-Sun. DEWEY BRIDGE section of the Colorado River. A beginner kayak trip on class II water. Bring a wetsuit; the water is in the low 40's. We'll camp at Rock Garden rapid Friday night, and run our trip from there. To reach our camp, take route 163 south and turn left on route 128 just before Moab. Drive approximately 16 miles on route 128. Campsite is on the left. Leader: Dan Thomas, 561-8606.

APRIL 24  
Saturday GRANDEUR PEAK. El. 8299 Rating 4.5 We'll follow the usual route up Church Fork for this popular spring hike. Meet at The Movie at 8:30 a.m. (3900 S. and Wasatch Blvd.) Leader: Elmer Boyd, 583-2292.

APRIL 25  
Sunday BIG MOUNTAIN. El. 8472 Rating 3.0 Big Mountain lies east of Hogle Zoo and south of Emigration Canyon and provides an excellent hike. Meet at the northeast corner of the Hogle Zoo parking lot at 9:00 a.m. Leader: Clint Lewis, 295-8645.

APRIL 26  
Monday KAYAK POOL PRACTICE. See April 5 for details.

APRIL 27  
Tuesday LAST DAY TO REGISTER, Beginners' Climbing Course. See Page 18 for details.

APRIL 28  
Wednesday BEGINNERS' CLIMBING COURSE. Evening session. See Page 18 for details.

APRIL 29  
Thursday EVENING CLIMBING AT PETE'S ROCK. See April 1 for details.

MAY 1-2  
Sat.-Sun. J'S KAYAK WEEKEND. The general area is Southern Utah, and the specific river will depend on water level. Waterproof your gear, load up your kayak, and be prepared for a unique trip down a small, rocky river. J Dewell, 295-2754 will provide more information.

MAY 1  
Saturday BEGINNERS' CLIMBING COURSE, first all-day session.

MAY 1  
Saturday LAMBS CANYON TO ELBOW FORK. Rating 3.5 This hike should provide some excellent scenery and hopefully some spring foliage. Meet at the parking lot by the K-Mart parking and the Regency Theatre at 8:30 a.m. Leader: Mike Hendrickson, 484-2640.

MAY 2  
Sunday WEST SIDE, GRANDEUR PEAK. El. 8299 Rating 7.0 We'll follow one of the two ridges on the west side to the top, which provides an excellent view of the Salt Lake valley. Meet at The Movie at 9:00 a.m. Leader: LeRoy Kuehl, 582-6890.

MAY 3  
Monday KAYAK POOL PRACTICE. See April 5 for details. Following this session, we will update the May schedule to consider the latest water flow information and trip dates.

- MAY 6  
Thursday
- EVENING CLIMBING AT STORM MOUNTAIN. Drive 3.0 miles up Big Cottonwood Canyon from Wasatch Blvd. through the narrow rock gap, across the bridge, then left down the dirt road to the Reservoir Parking Lot. Beer and hamburgers will be available throughout the summer. See Mountaineering Ramblings, page 17 of this Rambler.
- MAY 8-9  
Sat.-Sun.
- COLORADO RIVER - DEWEY BRIDGE TO MOAB (Beginner). This is a pleasant trip, offering views of Fischer Towers and the LaSal range. Beginning boaters can gain the experience needed for more difficult trips, and experienced river rats can treat their 'cabin fever.' Kayaks and canoes are welcome. Register with a \$10 deposit to Dave Hart, 8311 Top of the World Drive, Salt Lake City, Utah 84121, phone 943-0318.
- MAY 8-9  
Sat.-Sun.
- SPRING ROCKHOUND TRIP. Elmer Boyd will lead his annual rock hunting trip to the area south of Delta. This will be an overnighter, with some moonlight prospecting for Labradorite and other minerals. Register with Elmer (583-2292) for meeting place and details.
- MAY 8  
Saturday
- BEGINNERS' CLIMBING COURSE. 2nd all-day session.
- MAY 8  
Saturday
- MT. AIRE. El. 8620. Rating 3.0. This is an excellent spring hike to the summit which lies between Millcreek and Parleys Canyons. Meet at The Movie at 9:00 a.m. Leader: Fran Flowers, 581-9083.
- MAY 9  
Sunday
- MT. OLYMPUS. El. 9026. Rating 8.0. Time for the annual fight against Blister Hill with the summit as the reward. Meet at Pete's Rock at 8:00 a.m. Be sure to register with the leader. Leader: John Mason, 485-8815.
- MAY 10-14  
Mon.-Fri.
- DOLORES RIVER TRIP. This is a week-long kayak tour down this soon-to-be-dammed (damned?) river. Water level considerations will determine how much of this 178-mile river we will run. For the most part it is a Class I river but is dotted with Class III and III+ rapids. Leader: Brad Rich, 583-2023.
- MAY 12  
Wednesday
- GENERAL MEMBERSHIP MEETING will feature a slide show by Gal Giddings on his month-long trip down the Apurimac River, the major tributary of the Amazon. Time: 8:00 p.m. Place: Zion Lutheran Church, 1070 Foothill Dr., rear. More information is on page 15 of this Rambler.
- MAY 13  
Thursday
- EVENING CLIMBING AT STORM MOUNTAIN. See May 6 and Mountaineering Ramblings, page 17, for directions.
- MAY 15-16  
Sat.-Sun.
- LODGE AVAILABLE for WMC members. Anyone interested call Randy Taylor at 272-4624 for details.

- MAY 15-16  
Sat.-Sun. GREYS CANYON OF THE GREEN TRIP. A kayak practice session down this entirely road-accessible stretch of river. Suited for beginner kayakers. Leader: Jim Mason, 355-3810.
- MAY 15-16  
Sat.-Sun. UPPER DOLORES RIVER raft and kayak trip (beginner-intermediate). This small river in eastern Colorado requires maneuvering which is a bit more tricky than the usual beginners' trip, but some beginning rafters will be taken. Register by sending a \$10 deposit to Ken McCarty, 1136 East 27th South, Apt. 142, Salt Lake City 84106. Ken's phone is 466-3297.
- MAY 15  
Saturday BEGINNERS' CLIMBING COURSE. 3rd all-day session.
- MAY 15  
Saturday NORTH PEAK OF THUNDER MOUNTAIN. See May Rambler for details.
- MAY 17-21  
Mon.-Thurs. COWYHEE RIVER TOUR. Kayakers will attempt to run both lower stretches of this scenic river. The river from Three Forks to Rome can be a Class III+ with at least one portage if water conditions are right. It could take 3-4 days. From Rome to takeout, the water gets easier (a Class II depending on water flow) and could be done in 2 days. We will give priority to the first stretch, running the lower if time and conditions permit. Phone Dan Thomas, 561-8606.
- MAY 20  
Thursday EVENING CLIMBING AT STORM MOUNTAIN. See May 6 and Mountaineering Ramblings on page 17 for directions.
- MAY 23  
Sunday TANNERS GULCH SNOW CLIMB AND TRIPLE TRAVERSE. Details will be in the May Rambler.
- MAY 27  
Thursday EVENING CLIMBING AT STORM MOUNTAIN. See May 6 and Mountaineering Ramblings on page 17 for directions.

Remember that  
"sentimental return  
trip to the Tetons"  
last October? Hang  
on, summer is coming.

Photo by Mike Treshow





# Mill D to Millcreek

February 15

by Dan Judd

At the outset Sunday's weather seemed formidable: to the west a dark coudbank grimaced and a fog clung around the peaks. The group of eight ski-mountaineers could expect nothing less than a wild day - I guess that's why we were there. The big flakes were piling up as we started climbing up Mill D, north fork. The fresh snow made climbing easy, although it was hard to adjust from past weeks of red klister. We made good time through the cabins, past the fork to Dog Lake, and onto the flats below Desolation Lake. Here we took a side canyon heading north.

Now in our 4th hour of the trip, lunch was shared under a bower of firs on a ridge near the intended junction with Millcreek Canyon. Clouds closed in and visibility was poor. Huge flakes buried our tracks as we moved up to the main ridge. Then we met a "plain ole blizzard," as Judy called it. Strong winds, cold, and driving snow made it difficult to determine which ridge we were on and where we'd wind up if we descended the steep slope below. So the wise decision, "Retreat!" was made.

However, we received a reward: an open bowl thick with light powder, the best you could hope for. Everyone was able to descend comfortably and in control - as George put it, "backed down but not broken." The rest of the way was backtracking with here and there a test of the soft stuff, occasionally face first. While we were rolling down the canyon, John put in this consoling remark: "Unfortunately, it's one trip that frequently gets fouled up."

Leader: George Swanson.

Participants: John Riley, Judy Davis, Dan Thomas, Paul Rubinfeld, Lyman Lewis, Bob Woody and Dan Judd.

See the Country  
on ~~\$5.00~~ a day!  
**\$3.50**



**ROSSIGNOL • SKILOM**

Rent the best cross country  
ski package in town.

FREE Cross Country Clinic  
every Saturday — 9:00 a.m.

*Certified Professional Ski Repair*



**THE MOUNTAINEER**

Ski Rental / Repair  
1035 East 200 South  
Phone 582-2338



by Trudy Healy

Sunday, February 22nd, was one of those days, when everyone who was out in snow and sun, thought he had picked the best possible trip. Swooping down the wide open powder slopes, on the west side of Maybird Gulch, surely was joy supreme.

The leader: Dick "Silver Lining" Leining; his enthusiastic followers: Roy Johnson, Erik Miller, and Trudy Healy.

# Conservation Notes

by Bill Viavant

As new Conservation Director for this year, I will attempt each month to prepare notes on issues of significant interest to Club members, and where appropriate, ask for action by those most interested. This first effort will be longer than usual, so that I can include a brief questionnaire soliciting responses from members who did not submit the survey passed out at the General Membership Meeting in February.

## I. Results of survey:

	<u>Responses</u>
WMC conservation program { should be more active	41
{ should be less active	0
{ is good as it is	30
On conservation, I am informed { adequately	31
{ inadequately	39
On Kaiparowits, Club should { be opposed	52
{ do nothing	10
{ support it	5

Several people responded with their names, and several with constructive comments.

PLEASE: Any member who is interested, send me a postcard or letter with the above information and YOUR comments. VOLUNTEER to do one or more of the following: Write letters, phone, attend meetings, give talks (and other activities you may think of).

## II. BLM Workshop on Cedar Mesa Recreation Lands:

I attended a three-hour workshop in Salt Lake sponsored by the Moab District, designed to get public input and comments on a tentative Management Plan for a large area including the Grand Gulch and Slickhorn canyons, and part of the San Juan River below Mexican Hat. I am very pleased with the attitude and tentative recommendations of the BLM staff making the study. They recommend primitive status for two areas including the bottoms of these canyons, and 'natural' status for four other areas. They have not made recommendations on river-running, and we need urging to manage their section as close to the 'wild river' status as possible; specifically to bar motors, at least on all but the Lake Powell stretch below Grand Gulch. Several other WMC'ers were there and contributed suggestions: I saw Ruth Henson, Pete and Margo Hovingh, Dorde Woodruff and June Viavant.

## III. Kaiparowits:

By the time you read this. Sect. Kleppe (Interior) will have announced his decision. I can't predict it, but if it is favorable to the developers, there

will be LOTS of work to do. An important new aspect is that the National Park Service is seriously worried about the effects on the air quality in Bryce, Grand Canyon, and Glen Canyon National Recreation Area and is urging Congress to make Class I status mandatory for these areas. At present the bill reported from the Public Works Committee provides that this will be done only if the Governor of the state and the Secretary of the Interior request it!! Letters to Senators Moss and Garn can't hurt, but ones to other senators will actually help. Class I status will effectively prevent that part of Kaiparowits which is most destructive (the power generation) from occurring. The actual mining of coal has little direct effect on air quality, but of course the necessary development for towns, roads, etc. still will result in profound changes to the area.

#### IV: Hells Canyon

Conservationists won a FANTASTIC battle when President Ford signed a bill adding 67 miles of the Snake River to the Wild and Scenic River System, and creating a 650,000 acre National Recreation Area. Now no DAMS, NEVER!!!!

V. We need letters supporting proposals to make the Dolores River a 'wild river' Write Senator Floyd Haskell of Colorado and Congressman Frank Evans of Colorado. Opposition is from local people who either farm or graze on lands near the river and are worried that 'wild' designation would preclude future options to divert waters for irrigation.

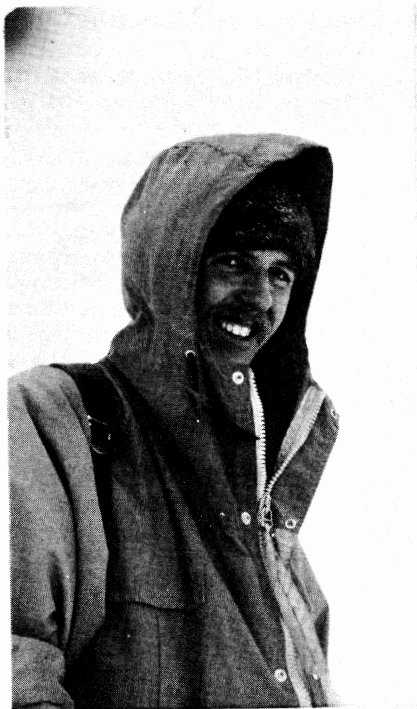
# From The President!

by Judy Davis

As leadership changes throughout the years, various items belonging to the WMC have been handed from one person to another. However, there has been no written record of what is where. The new Board has requested that we 1) inventory our belongings and 2) keep them in the possession of the current directors. One need only try to locate the WMC film on Glen Canyon or the Thursday night mountaineers' stove to appreciate the problem.

If you have been onemember kind enough to store club equipment, we thank you for your help. On the other hand, we would like to relieve you of this responsibility and hassle, and at the same time make it easier for those who are trying to find things. If you have club equipment, please call me (272-6435) or the director of the appropriate area and arrange for its transfer.

## DUES ARE DUE



nce upon a time, there lived in the valley of the Great Salt Letch a group of happy mountaineers. Their climbing feats were topped only by the tales told of them during Thursday night revels. The Washed Socks Mountain Club tolerated with amusement and benign paternalism this more rowdy segment of their membership. It was generally held that these unique people hibernated in winter, reviving only that more beer might be administered on Thursday evenings.



However, during the year 1976, a miraculous change came about. The mountaineers noted the increase in winter ascents. They observed the stern faces and gritting teeth of those in climbing magazines who dared to challenge sheets of vertical ice. Our heroes determined to try this adventure, and spent one memorable day in the land of Little Cottonwoodia. The dazzling smiles in these pictures prove their complete success. And the moral of the story is, children, that victory belongs to those who are smart enough to think they can. ??

From slides by Renny Jackson

# RIVER RUNNING

by Bob Weatherbee, Boating Director

The boating season is fast approaching and it will get off to an early start on April 9 with the Annual River Rats' Party at the Lodge. On April 11 the annual preseason work party will take place and the Club's gear will be transferred from the garage at 154 South 7th East to its new location at Unit 214 at the Storage Center at 4317 South 300 West, Murray, Utah. The new location will provide additional storage room, better lighting for late night return from trips, more space for work parties, easier access for loading and unloading gear and more direct access to the freeway system. (Ed. note: Any 'porcelain conveniences'?) In addition, two new boats have been purchased, bringing the total number of boats to eight.

The entire schedule for the coming season is printed on page of this RAMBLER. As indicated, the first two activities are the preseason Lodge party and the work party. Both functions serve to introduce beginners into the whys and wherefores of river running, paraphernalia and their maintenance, boating safety, organization and operation of the Club's boating section and the personal gear and equipment which is required for river running. Everyone who is interested in running rivers this season should make a strong effort to attend the work party.

Because of the numbers of people involved in WMC river trips, it is necessary to establish certain rules and regulations pertaining to river activities:

(1) The prime rule is life jackets will be worn at all times while on the river. No exceptions!! Only the large vest-type (commercial) life jackets will be allowed on trips above the beginning rating.

(2) River trips will be classified according to estimated difficulty and participants will be classified according to experience and ability. This is done not only to aid the trip leaders in filling the boats with well-rounded crews, but also to provide for the safety of all members and for a learning experience for all.

(3) A person is assured of a position on a river trip only upon receipt of a ten-dollar deposit by the trip leader. Make checks payable to the Wasatch Mountain Club. Verbal intent to go on a particular trip is not sufficient for confirmation of a trip reservation.

(4) The cost of a raft trip will be \$3.00/day/person plus transportation which will depend on the particular trip. Food cost, which is usually based on a communal cooking arrangement, will be separate from the trip costs.

(5) Participants are required to take part in the work pertaining to that river trip. Failure to attend this session will be at the risk of being dropped from the trip or given special assignments by the trip leader. (Extra duties have proven most effective in encouraging attendance.)

(6) Each person signing on for a river trip is expected to assume his or her equal share of responsibilities: loading the gear, inflation of boats, paddling, cooking, and cleanup. Remember that the boat captain is the sole master of the raft and the trip leader of the river trip.

(7) Keep a clean camp and do not degrade the environment.

(8) Reservations (\$10 deposit) should be made early - at least two weeks before the trip starts - so that transportation plans can be firmed up early. Deposits will not be returned the last week before the trip. Be prepared to pay the full fee at the work party which will be 2 to 5 days before the trip.

The major difficulty now is securing permits from the various regulatory bodies. The river running crowd has expanded enormously in the last several years and for the first time in the Club's history we have been unable to secure a permit for our popular Yampa and Lodore trips. There are a number of reasons for the permit problem. One of them is the fact that permit application procedures have been undergoing a great deal of change in the last year or two and new regulations are constantly being drawn up. Some of these regulations are extremely unrealistic and difficult to contend with. It is hoped the Club will be able to cope with this challenge during the coming year and that permits will be secured for the Yampa and Lodore trips next year.

The second problem on permits is the question of the Club's status as a private organization. (This problem did not have anything to do with the Club's failure to secure permits for Yampa and Lodore this year.) This question revolves around the Club's past practice of granting a free ride to the trip leader in recognition of the enormous amount of time and effort necessary for a leader to spend on organization and direction. Governmental agencies are now drawing up regulations which could prohibit any private organization from granting any kind of remuneration to anyone connected with the organization and conduct of a trip. To avoid compromising the Club's private status in any way, trip leaders will be expected to share fully in trip expenses the same as any other participant. No exceptions will be made.

It should be pointed out that the dates listed for the river trips in the schedule are for the time on the water. Departure time from Salt Lake City is, in most cases, the evening prior to that date.

The trip leader has the responsibility for deciding the qualifications of participants. In general, trip position will be held in the order deposits are received, but the ability to handle the rapids expected on the trip must be a consideration, particularly on advanced trips. (It may come as a blow to male

egos, but some of the gals in the Club can outpaddle some of the men.) The general qualifications for participants are as follows:

Classification of Participants

Qualification

Beginner

1. Physical ability
2. Club membership or permission of the trip leader or boating director

Intermediate

1. Physical ability
2. Experience on at least one other trip
3. Participation and willingness to work

Advanced

1. Experience on at least two intermediate river trips
2. Demonstration of ability to handle intermediate and advanced river situations

Boat Captains and Trip Leaders

1. Experience - demonstration of ability to maneuver the rafts and coordinate crew efforts
2. Willingness to assume leadership and responsibility

Boating Director

Direct family tie to Odin

Odin and I wish you an enjoyable and safe year on our western rivers.

EXPLORE THE APURIMAC RIVER

Former Mountain Club President Cal Giddings will narrate a slide presentation on his 300-mile expedition down the headwaters of the Amazon. This was a first descent and shows some incredible whitewater sequences. All members and friends of the WMC are invited.

Date: Wednesday, May 12, 8:00 p.m.  
Zion Lutheran Church  
1070 Foothill Drive, rear



# RAFTING 1976

APRIL 9	PRESEASON BOATING PARTY
APRIL 11	PRESEASON WORK PARTY
MAY 1-9	GRAND CANYON COMMERCIAL TRIP
MAY 8-9	DEWEY BRIDGE BEGINNER COLORADO RIVER TRIP
MAY 15-16	DOLORES RIVER TRIP
MAY 28-31	DESOLATION CANYON
JUNE 5-7	UPPER OWYHEE EXPLORATORY TRIP
JUNE 19-20	FAMILY RIVER TRIP
JULY 3-10	MAIN SALMON
JULY 25-31	MIDDLE SALMON
JULY 31-AUGUST 1	WESTWATER
AUGUST 7-14	MAIN SALMON
SEPTEMBER 3-6	HELLS CANYON
SEPTEMBER 17-20	CATARACT CANYON
OCTOBER 9-10	WESTWATER

Note: Some activities are subject to rescheduling. It is possible that some trips will be added in July and August. Contact the Boating Director for additional information.



3155 Highland Dr. • Phone 466 2101  
Salt Lake City, Utah 84106

FOR ALL YOUR KAYAK NEEDS.....

# Mountaineering Ramblings



by John Gottman

Our general meeting was well attended and some good points came out of the discussion. Suggestions included a classroom environment for the first session of the climbing class, a follow-up session to the class, an advanced class or seminar, rating the climbs, and qualifying persons whose capabilities are not known for scheduled climbs. I will attempt to implement these suggestions. Several research assignments were made. Audrey Stevens and John Osgood covered a wide range of winter camping subjects.

Paul Horton's climbing class (see his article) is offered in May for beginners. The course is extremely valuable for learning basic skills and techniques, but taking the class does not alone insure a person's acceptability to participate in scheduled climbs. In fact, it may demonstrate the opposite since some people are not suited to or really interested in climbing.

The Thursday night climbing at Pete's Rock in April will be followed by Thursday nights at Storm Mountain Picnic Area in Big Cottonwood Canyon. We meet by the dam between 6:00 and 6:30. The practice climbs are usually two pitches of F4, F5, or F6, and are followed by hamburgers and beer. Experienced climbers and ropes are on hand, but participants should have a good pair of boots and are encouraged to have a helmet. Thursday nights are excellent for gaining experience and determining one's climbing limits and interests. These are important when evaluating possible participation in our scheduled day climbs and high camps. Most of these events are very strenuous and include difficult climbing.

Our limited assault on Superior will be the last of our "winter condition" events. As anticipated, the summit completion ratio has been low. Each effort, however, has been an excellent learning experience. I am amazed at how extremely difficult climbs are in the winter. The approaches are struggles and scrambles become roped pitches. I have noticed that the completion times in the winter are double the summer times. I look forward to the joys of summer.

"It was like being in another world; the mountains seemed less a part of this planet than an entirely independent kingdom, unique and mysterious, where, to venture forth, all that was needed was the will and the love."

Gaston Rebuffat  
On Ice and Snow and Rock

# BEGINNERS' CLIMBING COURSE

The goal of the BCC is to teach beginners the basics of snow and rock climbing. It will provide the skills and knowledge required to follow experienced climbers up technical peaks like the Grand Teton, and provide a background for some WMC experienced climbs and mountaineering high camps. Because climbing and climbing classes can be dangerous, students are expected to take things seriously and to pay attention.

**WHO:** Club members only. No experience required, only an interest in learning to climb.

**WHEN:** Mandatory registration with Paul Horton (328-9486) by Tuesday, April 27. Evening session: Wednesday, April 28, 7:30 PM at John Gottman's, 1074 E. 600 South. The outdoor sessions will be held on the first three Saturdays of May, time and place to be announced. The evening class will be a short introduction, and the other classes will last most of the day. Attendance at all sessions is required.

**FEE:** \$5.00, payable at the first class. This provides you with instruction and a book, and provides the club with new ropes.

**EQUIPMENT REQUIRED:** Boots or rock shoes, hard hat, nylon webbing 1 inch x 20 feet, 3 carabiners and a brake bar (or 5 carabiners), and for the May 8 class, an ice axe. Bring any other equipment you may have, like nuts, slings, etc. No equipment except the webbing is necessary for the evening session.

Borrow the gear if you can, buy it if you must, but have it! There will be some ice axes available for loan; and the local climbing shops may rent them. If you have any questions or problems about equipment, then don't buy any until after the evening session when we'll discuss it.

The size of the class will be limited to 20, so don't wait until the last minute to register. For further information and registration, call Paul Horton.

## ENVIRONMENTAL STATEMENT OF THE CENTURY.....

It all started in 1947 when hearings were conducted on the application of Reserve Mining for a permit to discharge taconite tailings into Lake Superior. At that hearing Mr. Weinberg (attorney for the city of Duluth) stated,

"I have enough confidence left in our courts that when applied to in a case where an interest, no matter what it is, abuses its privileges and destroys the health and wealth of the community, the court will stop it. Now with that in mind, I do not wish it to appear that the City of Duluth would be the one to block the application."



Estelle Davis

symphony  
of house and tree  
be happy  
environmentally  
call Blue Ribbon Realty

SAM ALLAN      487-8901 office  
                    942-3149 home  
2870 East 3300 South, Salt Lake  
   City

## SETTLEMENT CANYON

### SKI TOUR

February 21

by Dan Thomas

We met at O'Dell's shop for this Oquirrh tour on what promised to be a primo ski touring day. The skies had cleared after a snowstorm a day ago and the temperature remained in the 30's. This route had not been done recently, and without firsthand direction it took awhile to get pointed the right way. Once properly squared away, we settled into an arduous series of traverses to gain the ridgeline.

The snow varied from cold metamorphosed powder through wet-warm to frozen wind pack. The view from the top was great. It showed that under the right conditions, this area has a lot of potential for midwinter touring. How anyone could schedule this perfect weather two months in advance is a mystery.

The route down, a steep protected gully, offered a fantastic opportunity for powder pigs and was soon desecrated with graceful S's and Polish 8's. The runout was just the right angle to avoid poling, and the last arrived at the cars at 5:30 p.m.

Powder Pigs and Arduous Traversers: Dan Thomas, Leader; Bob Lillian, Janeen Hill, Bonny Baty, Lourain Webb, Lyman Lewis, Charles and Emily Hall, George Swanson, Marty MacKnight, Jim Mason, Dave Hart, Jackie Thomas and Judy Davis.

# Wolverine Cirque Tour

February 14

by Roger Rollins

Seventeen hardy (or disbelieving) souls ignored the threats of the weatherman and showed up for this snowshoe/ski tour. It didn't take long for the novice snowshoers to be introduced to the joys of falling face down in the snow with their feet gleefully suspended above the snow by an independent snowshoe.

By the time we reached the dam we were spread out into two groups, and the weather had deteriorated from a gentle snow to downright unappealing wind mixed generously with small stinging flakes. Those of us seeking majestic views and views of Majestic were rewarded with grand panoramas of 300 yards or less.

Before lunch it was determined that completion of the tour was inadvisable due to avalanche conditions. On the way down, some snowshoers were observed skiing on their snowshoes (and other parts of their anatomy). A pair of nordic skis were observed poking tentatively around a tree and a voice muttered, "I wish they'd told me how to get up in these things." Back at the dam the whole party carefully obeyed the "NO SWIMMING" sign. No casualties occurred between the dam and the parking lot, although the last one in was heard to shout joyously from the top of a snowbank "I'm back John. You don't have to send out a rescue party."

Leader: John Riley. Participants: John Hendrickson, Larry Hoskins, Sally Nelson, Susan Roche, George Mooney, Emily Hall, Pennie Pace, Jennie Massie, Jim Frese, Roger Rollins, Roger Rollins Jr., Bob Lillian, Brent Lillian, Phyllis Robison, George Swanson and Ann Wennhold.

## OLD EDITOR FADES AWAY

Impossible that such a grunge job should be fun? Not on your tintype! Three years of editing the RAMBLER have put me in touch with some unique and wonderful people - you of the WMC. Your articles, photography, artwork and suggestions made it all great fun. I thank you for the opportunity to create. And I beg your indulgence for my occasional irreverent humor. I would stay on, but my indispensable Adrian Superdaughter will be leaving for college, and I must find some employment that pays me for a change. Joyce Sohler will take my place (she has some excellent ideas!) and she and Mike Treshow will continue to alternate on a two-months-off, two-months-on basis as before.

Those who are acquainted with my philosophy will not be surprised to read this sincere final message to you all (from a 'Park City mothah') -- chillun, the Lord has you on belay.

Audrey Stevens

A P P L I C A T I O N   F O R   M E M B E R S H I P

WASATCH MOUNTAIN CLUB  
3155 Highland Drive  
Salt Lake City, Utah 84106  
363-7150

NAME (Print) \_\_\_\_\_ Telephone \_\_\_\_\_

Name of spouse (only if spouse wants membership also) \_\_\_\_\_

Address \_\_\_\_\_ ZIP \_\_\_\_\_

Occupation (Optional) \_\_\_\_\_

I hereby apply for membership in the Wasatch Mountain Club and enclose \$ \_\_\_\_\_ as my annual membership dues for the year \_\_\_\_\_, \$ \_\_\_\_\_ of which is for a subscription to the Rambler for the year and \$4.00 entrance fee. (If joining during January thru August, dues are \$6.00 of which \$5.00 are for a Rambler subscription -- Spouse dues (non-subscribing) are \$3.00 additional. If joining during September thru December, dues are \$3.00 of which \$2.50 are for a Rambler subscription -- Spouse dues (non-subscribing) are \$1.50 additional. Add \$4.00 entrance fee to each application, single or couple. Subscriptions are not deductible from dues. I (do) (do not) desire to receive the Rambler.

I have attended two Club activities in the past 12 months as required for membership such as hikes, ski tours, camping trips, rock-hound trips or work parties and have been recommended by two trip leaders who are Club members. Events such as lodge parties, winter socials, lectures, meetings, etc. are not activities qualifying for membership. I agree to abide by all the rules and regulations of the Club as specified in the Constitution and Bylaws as determined by the Board of Directors.

I am specifically interested in the items checked below:

Hiking \_\_\_\_\_ Ski Touring \_\_\_\_\_ Boating \_\_\_\_\_ Mountaineering \_\_\_\_\_ Cycling \_\_\_\_\_

Conservation \_\_\_\_\_ Writing and Editing \_\_\_\_\_ Organizing social activities \_\_\_\_\_

Lodge Work \_\_\_\_\_ Photography \_\_\_\_\_ Other \_\_\_\_\_

CLUB ACTIVITIES ATTENDED:

1. \_\_\_\_\_ Date \_\_\_\_\_ Signature of recommending Trip Leader \_\_\_\_\_

2. \_\_\_\_\_ Date \_\_\_\_\_ Trip Leader \_\_\_\_\_

(Note: The signature of a Director may be substituted for one Trip Leader.)

\_\_\_\_\_  
Signature of Applicant

# BROADS FORK

February 1

by Fran Flowers

The sun was already well on its way across a cloudless sky as we started out. A couple of weeks without any new snow plus heavy use, had left the trail hard and icy in spots - usually, as luck would have it, the steep spots. But everyone cheerfully managed to overcome all obstacles. Shelly and Gerry were out front leading the pack at a brisk pace with the rest of us huffing and puffing along behind.

As the huffing and puffing increased, we realized that instead of taking the usual approach directly into the bottom of the cirque, Shelly was leading us up one side to a delicious little overlook where we had a panoramic view of the whole upper Broads Fork area. The lunch stop here was perhaps the most

memorable part of the hike. For anyone who has ever sat huddled in a grove of trees trying to eat amidst blowing snow on a cold hillside, a stop such as this is a precious moment to be long remembered. We basked in the sun, eating, talking, and enjoying the fine view and Gerry's wine for at least an hour.

On the way back we tried tracking to the side of the trail wherever possible, to avoid the ice and hard snow. Our skiers did the same, but tracked a little too far off the trail and ended up bushwacking out. Somewhere along the way, Trudy lost a snowshoe crampon, so if anyone happens to find one, chances are good that it is hers.

Thank you, Elmer, for a fun trip and also for taking the trouble to check out the route the day before.

The happy gang included: Leader, Elmer Boyd. Participants: Gerry Powelson, Joy Ray, Barbara and LeRoy Kuehl, Ruth Holland, Trudy Healy, Ruth Henson, John Riley, Robert Mitchell, Shelly Hyde, Ruth Hoppe, George Swanson, Fran Flowers and John, Kevin, Lydia, and little Lydia Deford.

# DUES

# DOG LAKE

March 6

By Luana Zwang

The day was glorious for an easy (at least for the coordinated) trip up to Dog Lake. Nine sun-lovers reached the lake at noon and spent a relaxing lunch, getting a tan for a bonus. Snow conditions by that time were a little odd, however. As one participant put it: "This is like skiing on mashed potatoes."

Three of our group - Danny Horton, Rob Snyder, and Tim Viavant - successfully continued on up to Reynolds Peak.

For the less experienced, coming down was easier by sitting on the back ends of the skis. For the others, it was a challenge to maneuver through the "mashed potatoes."

Leader: Danny Horton  
Participants: Larry Hoskins (snowshoes), Karl Lagerberg, Rob Snyder, Tim Viavant, Virginia Pedler, Susan Roche, Denis and Luana Zwang.

WASATCH MOUNTAIN CLUB, INC.

3155 Highland Drive/Salt Lake City/Utah 84106

Vol. 53, Issue 4 (1978)

SECOND CLASS  
POSTAGE PAID  
AT SALT LAKE  
CITY, UTAH.

FE

BOARD OF DIRECTORS

JUDY DAVIS	PRESIDENT	272-6435
DIANA SCHOENBERG	SECRETARY	466-6531
MEL DAVIS	TREASURER	278-3174
BOB WEATHERBEE	BOATING	272-5510
BILL VIAVANT	CONSERVATION	532-4289
MARY MANLEY	ENTERTAINMENT	1-732-3929
MIKE HENDRICKSON	HIKING	484-2640
DAN THOMAS	KAYAKING	561-8606
RANDY TAYLOR	LODGE	272-4624
JUDY WEATHERBEE	MEMBERSHIP	272-5510
JOHN GOTTMAN	MOUNTAINEERING	359-4693
AUDREY STEVENS	PUBLICATIONS	1-649-9884
ANDY SCHOENBERG	SKI TOURING	466-6531