

# *The Rambler*

FEBRUARY 1976 VOL. 53, ISSUE 2



Official publication of *THE WASATCH MOUNTAIN CLUB* Salt Lake City, Utah

# news 'n' notices!!

## SNOW SHOES FOR SALE

Two pairs of snow shoes, one set aluminum, one wood, with harnesses, both in excellent condition. Also one Phoebe stove, good condition. Contact Bob Weatherbee. Office: 363-1454; Home: 272-5510.

...When submitting articles for the RAMBLER, Please give your name. Otherwise your story will be "credited" to Anonymus. Thanks....

## thanks

- ....to Jude Whitehead for this month's RAMBLER art work.
- ....to George and Georgia Randall for mailing the January RAMBLER.

THE RAMBLER is published monthly by the Wasatch Mountain Club, Inc., 3155 Highland Drive, Salt Lake City, Utah 84106, Tele. 363-7150. Subscription rates are \$5.00 a year. Prospective members may obtain 2 months' free Ramblers by contacting Club headquarters or the membership Director. All correspondence regarding changes of address, mailing, etc., may be directed to the Membership Director at the address above. Second Class Postage paid at Salt Lake City, Utah.

Cover: Audrey Stevens taking off with the Paul Petzolt New Years ascent of the Grand Teton. Audrey is believed to be the first WMC member to have participated in this experience.

## Rambler Deadline

.... for MARCH is February 15, Sunday. Please have your articles typed, and pictures and slides padded, and mail or drop by to:  
ATTENTION: RAMBLER EDITOR  
Wasatch Mountain Club  
3155 Highland Drive  
Salt Lake City, Utah 84106

The Wasatch Mountain Club is governed by a Board of Directors - 13 representatives elected by the membership. Through the courtesy of Timberline Sports, our mail is sent to their address, 3155 Highland Drive, for collection only. The Club's telephone is located at O'Dell's Shoe Repair Shop, 425 South 8th West. This phone is maintained as an answering service only by Life Members 'Pete' (O'Dell) Peterson and wife 'Pinky'. They take time out from their work to answer the phone and relay incoming messages to the proper Director. The Petersons do not hold any office, or attend Board meetings, or are they informed by the Board of official actions. If a trip leader cannot be contacted or is not specified, call the Director of that department for information. The Board strongly desires to hear comments, suggestions, inquiries, and criticisms concerning the operation of your Club. Please feel free to phone any Director or write to the President. Names will be withheld upon request, but anonymous letters will be disregarded.

Mountain Club business is conducted only on the first and third Wednesdays of each month. At that time, and only at that time, is the mail opened, new membership applications voted on, dues payments recorded, address changes made, and all other business requiring board action conducted. All board members cannot attend all board meetings and although an effort is made to fill in during a member's absence, some business is held for action until the next meeting.

# Activities: Feb.'76

- FEBRUARY 8**  
Sunday  
INTERMEDIATE NORDIC TOUR - PARK CITY WEST TO MILLCREEK (1,2) I. This is a nice nordic tour with a long run out in Millcreek. Register with leader to arrange transportation. Leader: Jim Byrne, 582-5631.
- FEBRUARY 8**  
Sunday  
AFTER SKI SOCIAL, hosted by Kay and Phil Berger at their home at 2250 East Pheasant Way (5650 South). Time: 6:00 pm to 11 pm. The Berger's phone - 278-7412.
- FEBRUARY 13-16**  
Friday-Monday  
EXPLORATORY TRIP TO BRYCE CANYON. Jack Spear has volunteered to lead a nordic trip into the Bryce area. The particulars will have to be worked out by the group, so please register with Jack by February 8. 359-3667.
- FEBRUARY 14-16**  
Saturday-Monday  
LODGE OPEN. President's Day, Monday, will make this an extra long weekend for the lucky ones. Long or short, bring your family up to play and loaf. Sleeping bags, food, water, cooking and eating utensils are needed for overnights. Hosts: Saturday, Rolie and Betty Ure (278-8792); Sunday-on, Richard and Mary Craven (467-3480).
- FEBRUARY 14-15**  
Saturday-Sunday  
IGLOO BUILDING. Registration is essential. Leader, Don Colman, 486-7796.
- FEBRUARY 14**  
BEGINNER NORDIC-SNOWSHOE TOUR - WOLVERINE CIRQUE (1,2)B. This tour is another easy tour in the Brighton area. The lift will not be used, so the ascent and descent will be longer than usual. Meet at the mouth of Big Cottonwood at 8:30 a.m. Leader: John Riley, 486-2567.
- FEBRUARY 15**  
Sunday  
INTERMEDIATE NORDIC TOUR - MILL D TO MILLCREEK (2,3) I. This is a very nice long nordic trip with a long run out. Meet at the Movie at 9:00 a.m. Please be on time so we can spot a car. Leader: George Swanson, 466-3003.
- FEBRUARY 15**  
Sunday  
ADVANCED ALPINE TOUR - RED PINE CANYON. This trip goes into a beautiful high alpine cirque with some great powder skiing if conditions are right. Register with leader: Alexis Kelner, 359-5387.
- FEBRUARY 18**  
WINTER SOCIAL. Hosted by Phil and Kathleen Berger, 2250 Pheasant Way, Salt Lake City

FEBRUARY 18  
Wednesday  
GENERAL MEMBERSHIP MEETING. Important for the meeting of new Board Members and their confirmation. Also, special guest appearance by Finis Mitchell. He will show slides of the Wind Rivers. This will be held as in the past at the Zion Lutheran Church on 1070 Foothill Drive. The meeting will start at 7:30 pm. You may park in the church parking lot. Enter through the back door.

FEBRUARY 21  
Saturday  
NORTH RIDGE OF THE PFIEFFERHORN CLIMB. This roped climb will require skiing to the base of the ridge in Maybird, crampons, ice axes, piton hammers, avalanche equipment, and an early start. A limited number of in-condition climbers can do this route. Call the leader, Renny Jackson, at 278-8379 for registration and additional information.

FEBRUARY 21  
Saturday  
NORDIC TOUR - SETTLEMENT CANYON. This is an intermediate to expert nordic tour; the round trip is 10-12 miles long. Meet at Odell's Shoe Shop at 8:00 am. Leader: Danny Thomas, 561-8606.

FEBRUARY 22  
Sunday  
ALPINE TOUR - MAYBIRD (3,5)N. For those who want to go a little higher, this trip leaves Red Pine Canyon up into Maybird. This trip can be done by nordic skiers if they are very proficient on the downhill run. Meet at the mouth of Big Cottonwood at 9:00 am. Leader: Dick Leining, 583-1616.

FEBRUARY 22  
Sunday  
AFTER SKI SOCIAL at John Gottman's home, 1074 E. 600 S. SLC. 6 pm. - 11. pm.

FEBRUARY 26  
Thursday  
ICE SKATING. The Thursday night "session" will be held at Hygeia, 1250 E. 2100 S. beginning at 8 pm.

FEBRUARY 28-29  
Saturday-Sunday  
LODGE OPEN. The DeNevers and their teenagers will host. Bring water, food, your own gear to cook and eat, and your sleeping bag. Call DeNevers (328-9376) if you wish to participate in a potluck supper or have any questions.

FEBRUARY 28  
Saturday  
WINTER MOUNTAINEERING GENERAL MEETING. This will be a serious meeting including discussion and slides of winter camping and climbing, discussion of the climbing class, and discussion of the mountaineering program. The meeting will last approximately 2 hours and will begin at 8:00 pm. at the director's home at 1074 E. 600 S. Social activities will follow the meeting.

FEBRUARY 28  
Saturday  
SKI TOURING COURSE. This course is intended to go beyond the beginning touring courses offered by the shops. We shall concentrate on downhill running on nordic skis, and techniques to handle difficult terrain. There will be a small charge of \$2.00 for the ski touring fund. Meet at the mouth of Big Cottonwood at 9:00 am. Leader: Dwight Nicholson, 359-6178.

FEBRUARY 28 Saturday	BEGINNER NORDIC TOUR - Redman Campground to Brighton. This will be a very easy nordic tour in the big trees around the Brighton area. Meet at the mouth of Big Cottonwood at 10:00 am. Leader: Betty Botcher, 484-6692.
FEBRUARY 29 Sunday	ADVANCED ALPINE TOUR - Lone Peak. A beautiful trip into one of the great cirques in the Wasatch, with a possible climb to the summit. Meet at the southeast corner of the K-Mart parking lot on Foothill Dr. and 21st S. Please register with leader: Dave Smith, 486-2680.
FEBRUARY 29 Sunday	INTERMEDIATE TO ADVANCED NORDIC TOUR - Dale Summit. Trudy Healy has volunteered to take a group along the ridge west from Little Mountain and then later down to her house in Emigration Canyon for refreshments. There is a steep climb along the ridge, but snowshoers are welcome. Meet at the east end of the Zoo parking lot at 9:00 am. Leader: Trudy Healy, 583-3411.
MARCH 6 Saturday	ADVANCED ALPINE TOUR - Deseret Peak. An excellent high tour to the Stansbury Mountains west of Salt Lake. Meet at Odell's Shoe Shop at 8:00 am. Leader: Larry Swanson, 278-3269.
MARCH 6 Saturday	BEGINNER NORDIC-SNOWSHOE TOUR - Dog Lake (2,2)B. An easy trip up Mill D north fork. Meet at the mouth of Big Cottonwood at 9:00 am. Leader: Danny Horton, 328-9486.
MARCH 7 Sunday	BEGINNER - INTERMEDIATE SHOWSHOE-NORDIC TOUR. Elmer Boyd knows of an area south of Park City away from the snowmobiles with beautiful views of Heber Valley. Meet at the east side of the K-Mart parking lot at 8:30 am. Leader: Elmer Boyd, 583-2292.
MARCH 7 Sunday	ADVANCED ALPINE TOUR - Lake Blanche. This classic tour will be attempted again. Meet at the mouth of Big Cottonwood at 7:30 am. You must register with the leader: Alexis Kelner, 359-5387.
MARCH 7 Sunday	AFTER SKI SOCIAL, hosted by Alexis and Karla Kelner at their home at 1201 First Ave. Time: 6:00 pm to 11 pm. The Kelner's phone 359-5387.
MARCH 13-14 Saturday-Sunday	LODGE OPEN. Rollin and Betty Hurlbut and their teenage son will host. Everyone welcome. For questions call 943-5090.
MARCH 13 Saturday	MT OLYMPUS NORTH FACE, EAST SECTION CLIMB. We will again attempt to do the north summit in the vicinity of the chimney. An early start, snowshoes, crampons, pitons and hammers, ice axes, helmets head lamps or flashlights, and very good conditioning are required on this serious event. Meet at 6:30 at The Movie. Register with leader Larry Swanson at 278-3269. The climb will be followed by a late participant-financed dinner and social gathering at the leader's home.

MARCH 13  
Saturday

INTERMEDIATE NORDIC-SNOWSHOE TOUR - White Pine Canyon in Park City. This is a nice wooded canyon in the Park City West area. Meet at the east side of the K-Mart parking lot at 9:00 am. Leader: Wick Miller, 582-6051.

MARCH 13  
Saturday

MOONLIGHT TOUR - Snake Creek Pass. Rolle Pearson is going to lead a group up above the lodge in the afternoon to see the sunset and then ski down to a dinner at the lodge. Rolle promised a great meal, but would like those interested to call him so he can plan it. There will be a small fee to cover expenses. Meet at the lodge at 3:30 pm. Leader: Rolle Pearson, 277-8546.

MARCH 14  
Sunday

ADVANCED NORDIC TRIP - Deadman Mt. This will be our first tour of the season into the Uinta's. It will go up above the east fork of the Bear River. Resister with the leader by Wednesday night. Leader: Dave George, 359-8177.

MARCH 14  
Sunday

AFTER SKI SOCIAL, hosted by Mike Treshow at his home at 1798 Millbrook Road. Time, 6:00 pm. to 11:00 pm. Mike's phone: 467-1022.

MARCH 27-28  
Saturday-Sunday

LODGE OPEN. No host as yet.



**TIMBERLINE  
SPORTS, INC.**

3155 Highland Dr • Phone 466-2101  
Salt Lake City, Utah 84106



# Mountaineering

by  
John Gottman

## Ramblings



The way to the Grand was surprisingly crowded for the week after Christmas as Renny and Roger Jackson, Paul Horton, and I headed up Garnet Canyon. We saw Dennis Turville, Dean Hannibal, Rich Riese, Dave Lowe, and Lee Ortenburg, and the N.O.L.S. advance party. We were plagued by horribly late starts Sunday and Monday aggravated by subzero weather and equipment deficiencies and failures, and only managed to get high in the meadows after two rather short days. Our potential summit day was a blowing snow storm so we packed up and headed down to Bill Conrod's trailer in Beaver Creek. We were soon followed by all except Paul Petzoldt and the N.O.L.S. group (including our own intrepid Audrey Stevens) which had seven days of provisions and could wait out the weather.

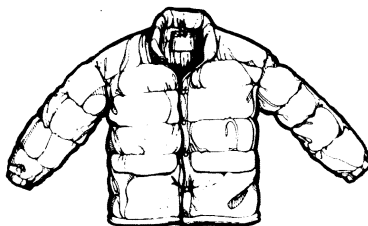
All of this points out the magnitude of the single-day winter climb by the George Lowe, Dave George, and Dave Smith party and the need for good preparation for serious winter events. The latter of these is one of the intended purposes of our general meeting to be held in late February. Audrey will show pictures and give us tips learned in her N.O.L.S. training with Mr. Petzoldt. Such subjects as zippers, wool, boots and overboots, skins vs waxing, stoves, snow caves vs tents, down, pads, food, gloves, avalanche gear, packs, etc. will be open to general discussion.

Thursday night sessions continue during which we often arrange informal week-end tours and climbs.

The Cascade Parka from Camp 7 is designed with features not found on any other parka.

No sewn through shoulder seams; two-way hand warmer pockets; bias bound inner sidescams; waist drawstring with locking sliders; Talon #9 nylon two-way ladder coil zipper; snap-over zipper flap; optional down hood; 10-oz. prime down, Minimum 525 fill; 1.9-oz. Ripstop Nylon shell.

### A Cure



### For The Common Cold

Camp 7's Cascade comes in 7 sizes from Extra Extra Small to Extra Extra Large. Colors: Navy, Rust and Green. All Camp 7 products are fully guaranteed against defects for as long as you own them.



Kirkham's  
**AAA TENT  
& AWNING  
& COMPANY**

24 West 5th South  
328-0181

# Annual Election Meeting

The nominating committee (Ken McCary, Betty Hendricks and Don Colman) has presented the following nominees for next year's Board of Directors:

President	Judy Davis, Gary Larsen
Secretary	Diana Schoenberg
Treasurer	Mel Davis
Boating	Bob Weatherbee
Conservation	Sam Allen, Walter Haas, Bill Viavant
Entertainment	Mary Manley
Hiking	Mike Hendrickson
Kayaking	Dan Thomas
Lodge	Randy Taylor
Membership	Judy Weatherbee
Mountaineering	John Gottman
Publications	Joyce Sohler
Ski Touring	Rolfe Doebling, Andy Schoenberg
4-year Trustee	Dale Green

Domination is officially closed with the publication of this list but space is provided on the ballot for write-ins.

The election meeting is at 8:00 pm. February 18th at Zion Lutheran Church, 1070 Foothill Drive. If you cannot attend and want to cast an absentee ballot, request one by phone or letter from our Secretary, Judy Davis, 272-6435, 2606 Evergreen Ave. SLC Ut 84109. Mail or bring your marked ballots to The Wasatch Mountain Club, c/o Timberline Sports, 3155 Highland Drive, Salt Lake City Utah, 84106. To be counted, the ballot must be inside a sealed envelope which has been marked on the outside with the word "Ballot" and with the voter's name. These ballots will be picked up at 5 pm on February 18th. Ballots not delivered to the meeting by voting time will not be counted.





# white pine TOUR

December 6

Anonymus

Eleven people registered and eight arrived at the Big Cottonwood parking area by 8:20 am. We were all mounted up and going on hard icy snow by 9: am.

Equipment ranged from straight nordic to Karl Logerbergs 30 year old wooden downhill--with which he beat most of us both up and down. Silvretta bindings were most popular with four of us using them. Four of the group used skins and were far in the lead at the lake.

Lunch was right on the button at 12 noon at the lake. The clouds were gone by then and it was sunny and beautiful. John produced a bottle of apricot brandy which really topped it off.

There was one wild idea, probably due to the brandy, about climbing over the ridge to upper Red Pine and descending by that route. That idea passed, however, and we returned mostly along the road.

Leader: Jerry Horton. Tourers: Dave Allen, Wayne Berndt, John Cole, Karl Logerberg, Theresa Overfield, and Evelyn and Fred Bruenger.



January 4

Anonymus

The mountains, the sun, and the clouds were all playing hide and seek. Little diamonds were blown in the wind and the branches of the evergreens were covered with sparles. A Bald Eagle circled in the cirque and finally disappeared in the clouds. All of this and good companions too.

Participants: Wick Miller; Fred and Evelyn Bruenger; Ruth Holland; John Riley; Helen Carney; Lyman Lewis; Dan Thomas; Jerry Neese; Don Coleman; Nick Danforth and daughter; Tim Parker; Dick Leining; Rene and Ralph Swanson; Bill Smith; and Pete, William, and Margo Hovingh.



## WANT TO HOST THE LODGE?

Looking for members to host Saturday nights March 27, April 10, April 24, May 15, and May 29, adjacent Fridays also possible. Can you manage a single night or a weekend? Call Leona Conn 363-6035 any time; best best weekdays 7 am or noon.



# River Running in Dinosaur Natl. Monument


by Ken P. McCarty

The river population explosion is catching up with the WMC. Although our applications for the Yampa and Lodore were mailed on the opening day for applications, reservations were filled before our application arrived, and we are on a wait list. Our chances for Yampa are negligible due to the short river running season, but there may be an opening for Lodore in August or September. If an opening arises, we will not have time for notification via the RAMBLER. Therefore, I will take the names of interested members to be contacted should an opening appear.

I talked to the River Ranger on the phone. He said they were allowing only one trip per person on each river. They will be cross checking names and social security numbers. Anyone attempting to run the rivers without the permit will be required to appear in Federal Court. The rivers in the monument are crowded and they are forced to these extremes to protect the canyons.

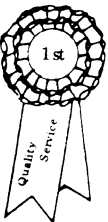
If you want to be contacted if there is an opening, send your name and social security number to me: Kenneth P. McCarty  
1136 E. 27th South #142  
Salt Lake City, Utah 84106 Phone: 466-3297

This will not be a reservation and no deposit is required.



BLUE RIBBON HOMES -- DESIGNED TO CONSERVE ENERGY!

- double-pane main windows
- heavy insulation
- functional fireplaces
- precision construction
- 8½% interest for a limited time



SAM ALLAN    487-8901    942-3149  
(home)

**BLUE RIBBON**    REALTOR

2870 EAST 3300 SOUTH •

# grand canyon

MAY 1 THROUGH MAY 9

Once again, the Club is sponsoring a trip with Dave McKay through the Grand Canyon. The trip will run for 9 days and 8 nights from May 1 - May 9. The trip will consist of a maximum of 20 people. Unless 20 people sign up, the trip will be limited to 11 people. Reservations will be accepted on a first-come first-served basis. Trip cost excluding transportation will be \$ 348.40 per person. Transportation costs to and from the Grand Canyon are estimated to run between \$60. and \$90. per person. For further information please contact either Bob Weatherbee 5664 South St. Charles Place, Salt Lake City, Utah, 84121. In order to be effective they must be accompanied by a \$75. per person deposit made payable to the Wasatch Mountain Club. Final date for acceptance of reservations will be March 15, 1976. Deposits will be non-refundable after March 31.

## Mineral \* Fork

January 11

by Fran Flowers

In spite of the early hour, a good group of nine skiers and three snowshoers showed up for the tour. We were the first group on the trail and it was fun knowing we had it all to ourselves, for a little while at least. Looking back to the north, we could see the sunlight just beginning to top the high peaks on the ridge; however, by mid-morning the sky was solid overcast -- we had seen the last of "ole sol".

The snow was excellent and no one seemed to have any problems even on the steeper parts of the trail. Our progress came to a halt in an open basin surrounded by bare steep slopes. It seemed a bit too risky to venture any farther so we stopped for lunch even though it was only 11 o'clock.

We were peacefully eating when a noisy hoard of skiers descended upon us, seemingly from out of nowhere. We had seen helicopters making passes over the ridge and now it was obvious just what was going on. For some of us it was an introduction to the "latest" -- helicopter skiing! Although nothing much was said within our group, the general message conveyed was that it was "great for thee but not for me". We soon started back down the trail and encountered the expected parade of other tourers. By 12:30, we were back to the cars and heading home.

The nine plus three included: Leader: Bill Yates; Participants: Greg Yates, Sandy Thomson, Trudy Healy, Steve Healy, John Riley, John Bowen, Paul Rubenfeld, Teresa Overfield, Ruth Henson, Elmer Boyd, and Fran Flowers.

# From the REZ

by Dale Green

At the December Board Meeting, Bylow III-H was changed to read: "The Board of Directors may grant life membership to a member who can demonstrate meritorious service to the club and has paid full dues for 25 years. Life members shall not be assessed annual dues."

Many thanks to Life Members Frank Trottier and Edith Green who have recently donated WMC historical materials. Frank's donation of Ramblers will be bound with others we have collected and will eventually be placed in a library. Edith donated to the Special Collection section of Western History at the University of Utah. Others who have such material may also wish to donate directly to this collection. Please contact Dr. Everett Cooley at the University of Utah Library.

Near the middle of February you will receive a dues notice by First Class mail. Our dues year is from March 1 to February 28. With the dues notice will be a form requesting information so we may update our membership and mailing list. Please be sure to return it. If we do not receive your dues and the form by April 15, you will be removed from the mailing list.

## Utah Chapter Sierra CLUB

The UTAH CHAPTER, SIERRA CLUB, sponsors two youth groups; one for youth 6th to 8th grades; and one, an Explorer Post (coed) for 9th through 12th graders... minimum age 14. The groups work on conservation issues and have at least one outing a month. The tentative Outing schedule for the Explorers is as follows:

Jan. Moonlight snow shoe trip  
Avalanche course (WMC)  
Feb. 4-day Targhee cross-country ski trip  
March 3-day cross country ski trip  
Uintas (snow caves)  
April 2-day bicycle trip  
May Canoe trip Snake River.  
Summer: Cross country bicycle trip... about 3 weeks. The group also has been taking rock climbing lessons. It is primarily concerned with the Kaipariwits project.

You do not have to be a Sierra Club or WMC member to join either group.

The younger group this past year has been ice skating, roller skating, horse-back riding, and swimming.

For information on either group contact:  
June Wickham, 272-7996. Or Explorers  
Leslie Bestor, 272-0427. Or Sierra  
Youth: William Hovingh, 359-4791.



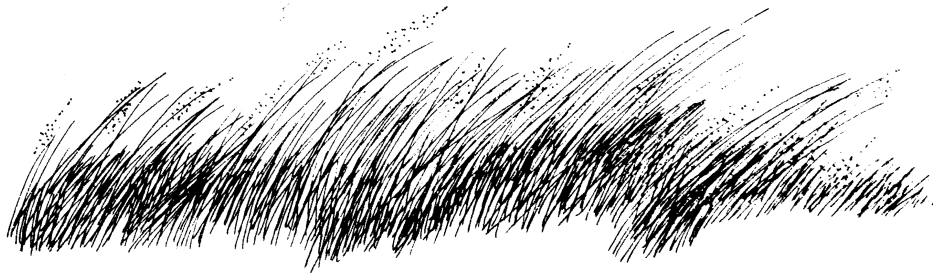


October 11-12

by Bob Weatherbee

Eager to make the last river trip of the season, fourteen diehard river rats plus one baby left for what all hoped would prove to be the warm and sunny skies of Southern Utah. The put-in was reached before dawn and the rest of the night was spent on the ground. At 7:00 o'clock in the morning when the crew started to awake and frost was observed on the ground, second thoughts about the wisdom of the trip were voiced. By 11:00 a.m. when the boats were put in the water, however, the weather had warmed considerably and spirits along with it. The river itself was somewhat cold and fairly low, approximately 4,000 c.f.s. Despite the low water, the canyon still proved challenging and several people were washed overboard. Half way through the canyon exceptionally strong up-canyon winds were encountered and take-out was not reached until almost 6:30. After loading the gear and travelling back to the put-in, the crew retired to a gastronomical repast prepared by Joy, Mary, Susan, Bob and Stew. Great debate was then launched as to whether or not an old tradition should once again be revived and West Water run twice the same weekend. Due undoubtedly to the influence of strong spirits, few negative votes were heard. In the morning, however, cooler, and undoubtedly achey heads almost succeeded in vetoing the plan. In any event, the cold light of dawn did indeed manage to weed out the pseudo from the true-blue river rats, and nine dummies once again assaulted the canyon. The second run proved just as exciting as the first, and all who did it agreed that it was certainly worthwhile. Those who stayed at the campground sipping Bloody Marys also agreed it was worthwhile (not going that is). Just as the two rafts reached take-out, a violent front started to move in and shortly after leaving for home, bad weather was encountered. All in all, it proved to be the perfect final river trip for the season.

Leader: Bob Weatherbee. Captains: Bob Weatherbee, Mary Manley and Stew Harvey  
River Rats: Alan Palumbo, Chuck Denton, Joy Ray, Bob and Susan Meyer, Larry and Valerie Peterson, Dick Hawn, John Cole, Bonnie Omana and Marlene Austin  
Baby: Emily Caroline



A P P L I C A T I O N   F O R   M E M B E R S H I P

WASATCH MOUNTAIN CLUB  
3155 Highland Drive  
Salt Lake City, Utah 84106  
363-7150

NAME (Print) \_\_\_\_\_ Telephone \_\_\_\_\_

Name of spouse (only if spouse wants membership also) \_\_\_\_\_

Address \_\_\_\_\_ ZIP \_\_\_\_\_

Occupation (Optional) \_\_\_\_\_

I hereby apply for membership in the Wasatch Mountain Club and enclose \$ \_\_\_\_\_ as my annual membership dues for the year \_\_\_\_\_, \$ \_\_\_\_\_ of which is for a subscription to the Rambler for the year and \$4.00 entrance fee. (If joining during January thru August, dues are \$6.00 of which \$5.00 are for a Rambler subscription -- Spouse dues (non-subscribing) are \$3.00 additional. If joining during September thru December, dues are \$3.00 of which \$2.50 are for a Rambler subscription -- Spouse dues (non-subscribing) are \$1.50 additional. Add \$4.00 entrance fee to each application, single or couple. Subscriptions are not deductible from dues.) I (do) (do not) desire to receive the Rambler.

I have attended two Club activities in the past 12 months as required for membership such as hikes, ski tours, camping trips, rock-hound trips or work parties and have been recommended by two trip leaders who are Club members. Events such as lodge parties, winter socials, lectures, meetings, etc. are not activities qualifying for membership. I agree to abide by all the rules and regulations of the Club as specified in the Constitution and Bylaws as determined by the Board of Directors.

I am specifically interested in the items checked below:

Hiking \_\_\_\_\_ Ski Touring \_\_\_\_\_ Boating \_\_\_\_\_ Mountaineering \_\_\_\_\_ Cycling \_\_\_\_\_

Conservation \_\_\_\_\_ Writing and Editing \_\_\_\_\_ Organizing social activities \_\_\_\_\_

Lodge Work \_\_\_\_\_ Photography \_\_\_\_\_ Other \_\_\_\_\_

CLUB ACTIVITIES ATTENDED:

1. \_\_\_\_\_ Date \_\_\_\_\_ Signature of recommending Trip Leader \_\_\_\_\_

2. \_\_\_\_\_ Date \_\_\_\_\_ Trip Leader \_\_\_\_\_

(Note: The signature of a Director may be substituted for one Trip Leader.)

\_\_\_\_\_  
Signature of Applicant

# B.Y.O.B.



## "Bring Your Old Boots"

in any condition  
and we'll buy them for

**\$18** a pair

when you purchase any new  
ski boot in our store.

(Offer good thru February 29, 1976)

Please, only one trade-in per purchase.



**THE MOUNTAINEER**

207 South 13th East  
and now at  
**TROLLEY SQUARE**  
Phone 582-2338

# LAKE SOLITUDE TOUR

January 10

Anonymus

A heavy snow storm the night before dropped a foot of fresh powder on the mountains. Clear, sunny skys the next day made a perfect setting for this leisurely tour. Snowshoes and skis were about evenly divided among the group of 34 participants.

We lunched beside Solitude Lake, watching those on skis running the hill formed by the mine dump at the head of the lake. The snow was so soft that when they fell, we accused them of trying to dig a snow cave.

Audrey Stevens, fresh from her Grand Teton climb with Paul Petzoldt, said she enjoyed most the thought that she would be back in her own bed that night, and not digging in to stay on the mountain.

On the return trip we met at least a hundred people coming up the trail. Glad we got there first.

Tourers: Richard Conn, George Westbrook, Lucy Raguso, John Bowen, George Gardner, Jan Pilling, Pamela Parker, Cathy Meyers, Doreen Dennison, Frank West, Kay Provencher, Rinda Harrison, Susan Roche, Wayne Bamossy, Ruth Holland, Judy Davis, Dan Thomas, Leona Conn, Pat Milligan, Audrey Stevens, Lawrence Vanderplas, Stan Davis, Teri and Steve Minnaught, Helane Leta, Rusty Forrbell, Karl Logerberg, Mary Aa, Bill, Sarah, Greg, Brad and Kathy Yates, and leader, Mel Davis.

# **WASATCH MOUNTAIN CLUB, INC.**

3155 Highland Drive Salt Lake City Utah 84106

Vol. 53, Issue 2 (1976)

SECOND CLASS  
POSTAGE PAID  
AT SALT LAKE  
CITY, UTAH.

## **BOARD OF DIRECTORS**

DALE GREEN	PRESIDENT	• 277-6417
JUDY DAVIS	SECRETARY	272-6435
MEL DAVIS	TREASURER	278-3174
KEN McCARTY	BOATING	466-3297
MIKE OMANA	CONSERVATION	561-4537
PEGGY TAYLOR	ENTERTAINMENT	272-4624
MIKE HENDRICKSON	HIKING	484-2640
DANNY THOMAS	KAYAKING	561-8606
DESIREE (DIZ) MAYS	LODGE	582-3878
JUDY WEATHERBEE	MEMBERSHIP	272-5510
JOHN GOTTMAN	MOUNTAINEERING	359-4693
MICHAEL TRESHOW	PUBLICATIONS	467-1022
DWIGHT NICHOLSON	SKI TOURING	359-6178