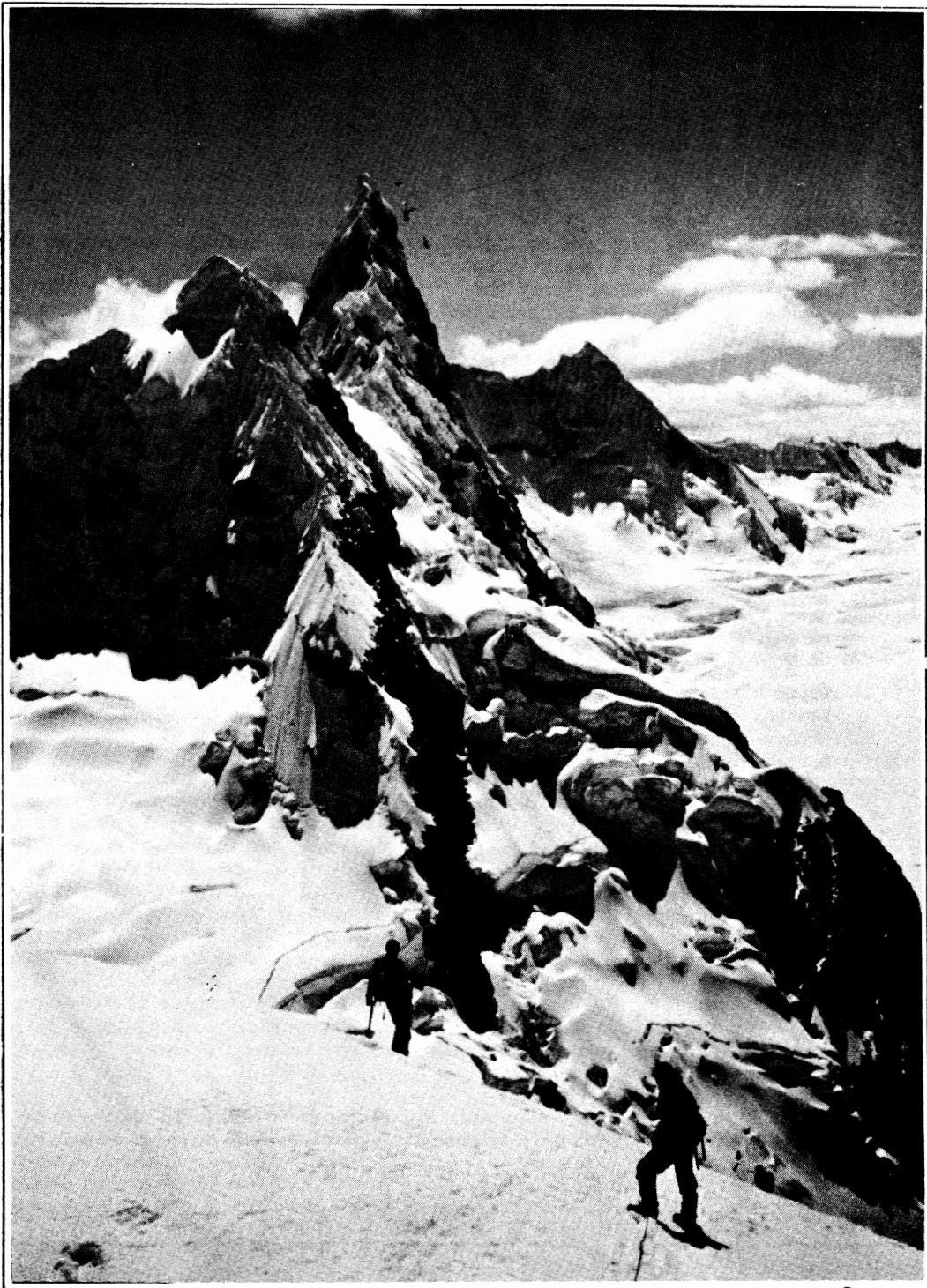


# *The Rambler*

JANUARY 1976 VOL. 53, ISSUE 1



*Official publication of THE WASATCH MOUNTAIN CLUB Salt Lake City, Utah*

# news 'n' notices!!

CONDOLENCES: To poor Peggy Taylor who is recuperating from a knee injury and operation-- the former the consequence of a skiing accident the first day of the season. Best wishes for a rapid recovery, Peggy.



39

## thanks

- ....to Jude Whitehead for this month's RAMBLER art work.
- ....to George and Georgia Randall for mailing the January RAMBLER.

THE RAMBLER is published monthly by the Wasatch Mountain Club, Inc., 3155 Highland Drive, Salt Lake City, Utah 84106, Tele. 363-7150. Subscription rates are \$5.00 a year. Prospective members may obtain 2 months' free Ramblers by contacting Club headquarters or the membership Director. All correspondence regarding changes of address, mailing, etc., may be directed to the Membership Director at the address above. Second Class Postage paid at Salt Lake City, Utah.

COVER PHOTO: Cayesh, in the Peruvian Andes. Courtesy of Dale Green.

## Rambler Deadline

.... for FEBRUARY is January 15, Thursday. Please have your articles typed, and pictures and slides padded, and mail or drop by to:  
ATTENTION: RAMBLER EDITOR  
Wasatch Mountain Club  
3155 Highland Drive  
Salt Lake City, Utah 84106

The Wasatch Mountain Club is governed by a Board of Directors - 13 representatives elected by the membership. Through the courtesy of Timberline Sports, our mail is sent to their address, 3155 Highland Drive, for collection only. The Club's telephone is located at O'Dell's Shoe Repair Shop, 425 South 8th West. This phone is maintained as an answering service only by Life Members 'Pete' (O'Dell) Peterson and wife 'Pinky'. They take time out from their work to answer the phone and relay incoming messages to the proper Director. The Petersons do not hold any office, or attend Board meetings, or are they informed by the Board of official actions. If a trip leader cannot be contacted or is not specified, call the Director of that department for information. The Board strongly desires to hear comments, suggestions, inquiries, and criticisms concerning the operation of your Club. Please feel free to phone any Director or write to the President. Names will be withheld upon request, but anonymous letters will be disregarded.

Mountain Club business is conducted only on the first and third Wednesdays of each month. At that time, and only at that time, is the mail opened, new membership applications voted on, dues payments recorded, address changes made, and all other business requiring board action conducted. All board members cannot attend all board meetings and although an effort is made to fill in during a member's absence, some business is held for action until the next meeting.

# CLUB Activities January 1976

AVALANCHE INFORMATION is available from the Wasatch National Forest winter sports information recording, 486-6333. The information is more complete and up to date than in the past, so their recommendations can be relied upon. If you have any further questions on avalanche conditions, call Dwight Nicholson, 359-6178. Avalanche probes, cords and shovels are required on advanced tours at the discretion of the leader. Probes are available for rent through the Ski Touring Director. Electronic transmitter-receivers are now available through Timberline Sports and are recommended for advanced tourers.

RATINGS OF SKI TOURS (X, Y) describe the difficulty of the climb (X) and the skiing proficiency required to get down (Y). Both are rated from 1 to 6, in order of increasing difficulty. A detailed description of some popular tours is in the November 1975 issue of the RAMBLER. Contact the leader if you are in doubt about your ability to do the tour.

REGISTRATION WITH TRIP LEADERS is important for ski tours since weather and snow conditions can cause cancellation or change in destination. It also aids in organizing car shuttles early enough to avoid delays. Register with the leader by some reasonable hour on the day before the tour.

FREE SKI TOURING CLINICS - These clinics all offer beginner instruction and in some cases will go beyond the beginner stage and have more advanced tours. Some also offer evening discussions, as Timberline does. However, in all instances I feel it is important to call the respective shops and find out the details. All the clinics are on Saturdays and will begin as soon as there is sufficient snow.

Clinics are: Timberline Sports, 3155 Highland Drive, 466-2101  
Wasatch Mtn. Touring Co., 779 East 300 South, 359-9361  
Village Sports Den, 1384 Foothill Drive, 582-5611  
The Mountaineer, 1035 East 200 South, 582-2338

These ski touring clinics are a very good way to get into the sport, and could be enough instruction for a beginner to then participate in a club beginner's tour.

- Dwight Nicholson, Ski Touring Director

## HAPPY NEW YEAR!

JANUARY 10-11  
Sat.-Sun. LODGE OPEN. Dean Withrow's family will host. You'll need bedding, water, food, pans and tableware. Call Carol, 363-0352 if you want to participate in a potluck supper or have questions.

JANUARY 10  
Saturday CITIZEN RACE. Cross-country. See end of Schedule for details.

JANUARY 10  
Saturday BEGINNER NORDIC OR SNOWSHOE TRIP - LAKE SOLITUDE (1,2) B This is a very easy trip and can be a real joy on snowshoes or nordic skis. Meet at the mouth of Big Cottonwood at 9:30 a.m. Leader: Mel Davis, 278-3174.

JANUARY 11  
Sunday INTERMEDIATE NORDIC OR SNOWSHOE TRIP - MINERAL FORK (2,2) I This tour follows an old mining road into the head of Mineral Fork. Meet at the mouth of Big Cottonwood at 8:00 a.m. Leader: Bill Yates, 1-723-3853.

JANUARY 17  
Saturday INTERMEDIATE NORDIC AND SNOWSHOE TOUR - DOG LAKE TO REYNOLDS PEAK. This trip will go farther than the standard Dog Leg trip, and should provide some nice views of the Wasatch. Meet at the mouth of Big Cottonwood at 8:30 a.m. Leader: Allen Taye, 486-0588.

JANUARY 18  
Sunday NORDIC TOUR - SCOTTS PASS TO PARK CITY (2,2) I This trip is also suitable for strong snowshoers, for it covers a lot of ground. Because of the car spotting arrangements and the possibilities of night life in Park City after the tour, the leader would like you to call to register. Leader: Bob Everson, 262-0668.

JANUARY 23-25  
Fri.-Sun LODGE OPEN. Here's your chance to beat the crowd. Start skiing Friday morning. Jim and Jackine McCullough, 466-4061, are hosts for this family weekend. Come whenever is best for you. Bring bag or blankets, drinking water, cook kit, chow, plate, cup, and cutlery.

JANUARY 24  
Saturday BEGINNER NORDIC OR SNOWSHOE TRIP - SNAKE CREEK PASS (1,2) B. This is a nice beginner trip in the Brighton Cirque. The view from the pass is really nice and worth the short ascent. Meet at the mouth of Big Cottonwood at 9:00 am. Leader: Paul Horton, 355-3269.

JANUARY 24  
Saturday CITIZEN RACE. Cross-country. See end of Schedule for details.

JANUARY 24  
Saturday BEGINNER-INTERMEDIATE TOUR - DESOLATION LAKE VIA MILL D, (2,2) B. This trip is suitable for snowshoers, and a very pleasant nordic trip. Meet at the mouth of Big Cottonwood at 9:00 a.m. Leader: Frank West, 1-225-5999.

JANUARY 24  
Saturday MOUNTAINEERS ICE CLIMBING CLINIC. Renny Jackson will lead the clinic. Bring your ice axe and crampons. Phone Renny Jackson in advance at 278-8379

- JANUARY 24**  
**Saturday** KIDS DAY. Parents, bring your kids, skis and toboggans or sleds for kids' day. You'll need warm clothing, instant cocoa, canned chili, eating utensils and some gear to play with in the snow. Meet at the lodge at 10 am, Saturday, or call Jude Whitehead, 966-0783.
- JANUARY 25**  
**Sunday** ADVANCED ALPINE TOUR. This tour will go wherever the conditions look best, but you can be assured it will go high and long. Register with leader, Dave Smith, 943-8550.
- JANUARY 25** WINTER SOCIAL. Hosted by Alexis and Karla Kelner, 1201 First Avenue, Salt Lake City
- JANUARY 31**  
**Saturday** AVALANCHE COURSE. Once again we will have Gerry Horton and Dave Hanscom talk about avalanche conditions, route finding, and rescue techniques. The morning session will begin at 9:00 a.m. at Zion Lutheran Church and go till noon, at which time we will break for lunch. We will regroup somewhere in Big Cottonwood Canyon for probing practice and rescue techniques in the afternoon. There is a \$2.00 fee to pay for literature and help the ski-touring fund. For details, call Dwight Nicholson, 359-6178.
- JANUARY 31**  
**Saturday** BEGINNER FAMILY TRIP - LAKE SOLITUDE (1,2) B. This trip is quite easy and skis or snowshoes are welcome. Meet at the mouth of Big Cottonwood at 9:00 a.m. Leader: James Dalgleish, 295-8749.
- FEBRUARY 1**  
**Sunday** ADVANCED ALPINE TOUR - NEFFS CANYON from S-TURN. This is another Alexis Kelner tour, so be prepared for anything. Register with leader, 359-5387.
- FEBRUARY 1**  
**Sunday** INTERMEDIATE SNOWSHOE TRIP - BROADS FORK. This is a nice snowshoe trip into a very beautiful canyon. It is suitable for skins, but is steep for nordic skis. Meet at the mouth of Big Cottonwood at 9:00 am. Leader: Elmer Boyd, 583-2292.
- FEBRUARY 7**  
**Saturday** INTERMEDIATE NORDIC-SNOWSHOE TOUR - MINERAL FORK (2,2) I. This trip starts in Big Cottonwood and visits one of the old mining side canyons. Meet at the mouth of Big Cottonwood at 8:00 am. Leader: Bill Rosquist, 295-0458.
- FEBRUARY 7**  
**Saturday** INTERMEDIATE NORDIC-SNOWSHOE TOUR - SILVER FORK. This will go up Silver Fork from Big Cottonwood. There are some nice views of Honeycomb Cliffs and upper Silver Fork. Meet at the mouth of Big Cottonwood at 9:00 a Leader: Bob Wright, 272-1177.
- FEBRUARY 7**  
**Saturday** CITIZEN RACE. Cross country race at Park City. Call Joe Buys at Wolfes for details, 521-0550.

- FEBRUARY 8                      INTERMEDIATE NORDIC TOUR - PARK CITY WEST TO MILLCREEK  
Sunday                      (1,2) I. This is a nice nordic tour with a long run  
out in Millcreek. Register with leader to arrange  
transportation. Leader: Jim Byrne, 582-5631.
- FEBRUARY 14                      BEGINNER NORDIC-SNOWSHOE TOUR - WOLVERINE CIRQUE (1,2)B.  
This tour is another easy tour in the Brighton area.  
The lift will not be used, so the ascent and descent will  
be longer than usual. Meet at the mouth of Big Cotton-  
wood at 8:30 a.m. Leader: John Riley, 486-2567.
- FEBRUARY 13-16                      EXPLORATORY TRIP TO BRYCE CANYON. Jack Spear has  
Friday-                      volunteered to lead a nordic trip into the Bryce area.  
Monday                      The particulars will have to be worked out by the  
group, so please register with Jack by February 8.  
359-3667.
- FEBRUARY 14-16                      LODGE OPEN. Washington's Birthday Monday will make this an  
Sat.- Mon.                      extra long weekend for the lucky ones. Long or short, bring  
your family up to sled, ski, and lounge. Sleeping bags, food,  
water, cooking and eating equipment are needed for overnight  
stays. Hosts: Saturday, Rolie and Betty Ure (278-8792);  
Sunday-on, Richard and Mary Craven (467-3480).
- FEBRUARY 15                      INTERMEDIATE NORDIC TOUR - MILL D TO MILLCREEK (2,3) I.  
Sunday                      This is a very nice long nordic trip with a long run out.  
Meet at the Movie at 9:00 a.m. Please be on time so we can  
spot a car. Leader: George Swanson, 466-3003.
- FEBRUARY 15                      ADVANCED ALPINE TOUR - RED PINE CANYON. This trip goes into  
Sunday                      a beautiful high alpine cirque with some great powder  
skiing if conditions are right. Register with leader:  
Alexis Kelner, 359-5387.
- FEBRUARY 18                      WINTER SOCIAL. Hosted by Phil and Kathleen Berger,  
2250 Pheasant Way, Salt Lake City
- FEBRUARY 28-29                      LODGE OPEN. The DeNevers family will be hosting.  
Sat.- Sun.

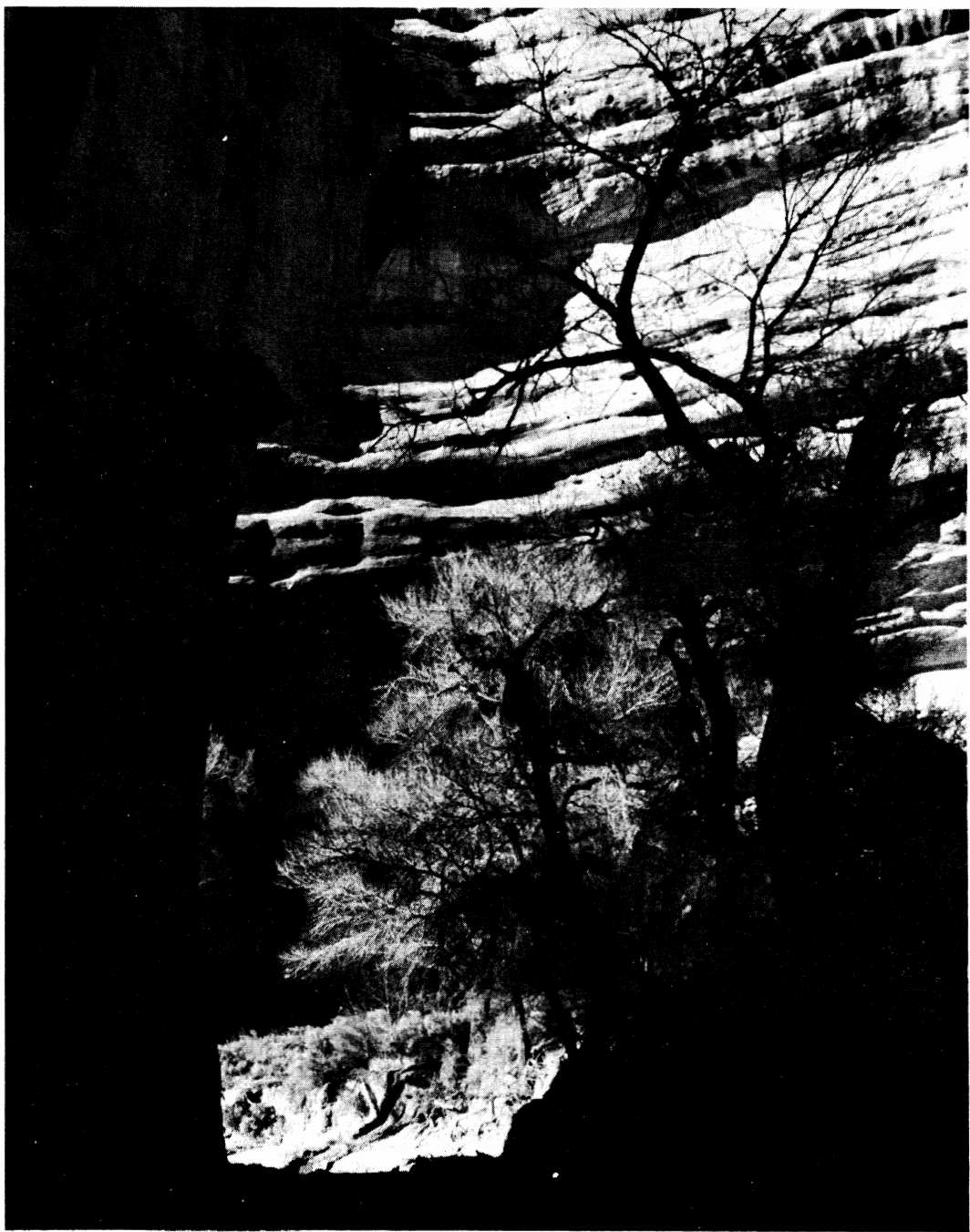


#### SPECIAL THANKS:

Special thanks go to several people who spent a productive Saturday morning at the lodge after the Halloween party. John Burton did some much needed electrical work with the help of Bill Yates so now we can see in the kitchen. Grace Burton, Sarah Yates, and George and Lois Lowe, Judy White-

head, Al Palumbos, Bill Viavant, and Mike Burton all pitched in to do many miscellaneous jobs like mopping the floor, cleaning the attic room, fixing wobbly tables, patching broken doors and windows, and putting new cord on all the window blinds. Thanks to all of you for your generosity.

Mary Manley





November 27-30

by Dorde Woodruff

Originally nine people had signed up. Only two of us actually went, Mike Hendrickson and I. I hadn't backpacked since the Paria in 1971, and I'd wanted to hike Grand Gulch for twenty years. Mike didn't want to go by himself at this season. We solved the two car problem by stuffing my trail bike into the Scout.

Soldier Summit was very slow with snow and Thanksgiving traffic. We set an all time record for a slow trip to Moab, 9 ½ hours. It was cold and barren at the Grand Gulch Primitive Area sign at 1:30 Thanksgiving morning.

On awakening, the weather wasn't too bad. We decided to leave the Scout at Bullet Canyon and ride the bike back to the start and the packs at Kane Gulch, in case of even more snow on our return. Mike was not too happy to be a passenger on my 1 ½ person little bike, but it served. I hid the bike carefully in the trees so no one would rip it off.

Kane Gulch was reminiscent of the start of the Zion Narros on club hikes years ago. It gradually sank into the mesa. Little frozen waterfalls were everywhere. Brown leaves lay in the stream and in the ice. The trail skirted large boulders in the bottom. The canyon got impressive. The first ruin was reached, some rooms with roofs still on, after 700 years, more or less. Pretty good for mud and sticks.

We turned into the main canyon. A window high in a rock gooseneck between bends of the canyon. We stopped at another ruin and camped there in a bare place under the junipers. In the morning we found why it was bare. It rained. Water dripped from the black streaks on the overhang (Note: beware of camping under black streaks. This is a sub-category of a wash. We know that one must never camp in a wash. One experience with a live wash makes a believer.) Water ran through our bare spot. We packed up wet things, lurked in the ruins for a while, and carried heavy packs that day which included a few extra pounds of water well distributed.

Friday and Saturday were a continuum of high Navajo sandstone walls topped with Canyonlands-like formations, ruins put everywhere there was a shelter, a pleasant shallow creek, sometimes running, sometimes frozen, sometimes underground, gaunt cottonwoods, Narrows-type views, Glen Canyon-type views, gentle snow outside the turtle shell of parka and pants, cold winter sun. Days in which one likes to exist; days too rare.

Corn, beans and squash must have grown well in Grand Gulch's generally rather wide bottom. The population of Indians must have been high. Some ruins were easily accessible, some were fortresses. Fascinating to speculate on the people's days and lives.

Modern man has ravished the canyon. Overgrazing above has caused wild floods in the canyon, cutting deep (fifty foot) gouges in the once level canyon floor. No one could irrigate crops with primitive methods now in Grand Gulch. Tumble weeds filled whole terraces. A sad sort of "primitive area" in this regard.

Saturday afternoon, just after we turned the corner into Bullet Canyon, blue sky appeared behind us. Sun sparkled on the snow. Quickly, gray clouds raced over. Sun and cloud alternated. The prize ruin of all appeared in the canyon's panorama which unreeled before our eyes as we walked, tucked into the crevices of the cliff, cabalistic pictographs above it.

The wind turned bitter. This part of the canyon had no overhands. We tried to shelter in a side canyon but found no windbreak. For the first time the weather was truly hostile. The night was long and cold, moderated a bit by morning, helped by a large and early fire. We found later that it was 0° that night in Blanding, 40 miles away and lower in elevation.

An exciting thing had happened late Saturday afternoon. I realized that in the snow I could see lichens covering the ground. This is the sign of an area unmarred by that blight of the West, domestic grazing. In the morning I looked carefully at the vegetation. Grass heads were shoulder high. Bushes were large and healthy. Bunch grass interplayed with small cacti. It was beautiful. It looked right. There was some barrier to cattle and sheep that we had missed on our way up the canyon, perhaps when we were walking on a terrace. Ranchers will graze wherever they can. I knew the entry at the top of the canyon must have been impassible to these animals.

More huge boulders, very slow going. I wondered about the cliffs at the top of the canyon. We rounded a bend, and there was a notched waterfall clear to the rim, not very steep. But when we got in it, we found the upper side of the slick-rock steps coated with ice. We had to take turns scratching up a pitch, then haul the packs and lend assistance to the other with Mike's rope. The rocks in the canyon had been mostly ice coated too. By the time we got to the top, I was tired of ice-coated rocks. Dry, it would have been a sidewalk.

Then we had only to walk out on the snow and mud of shallow upper Bullet Canyon, a proud ruin standing on its wall halfway up. Mike led us up a side-wash directly to the Scout. Back to the little bike, now buried in snow, and stuff it into the Scout along with several pounds of good red dirt.

Back in Salt Lake we found that the storm had been fierce while we were snug in our canyon with the soft snow, except for our one harsh night. All week I wanted to still be in Grand Gulch. And come next March, when the ice is off the rocks, I hope to be again.

I looked at my picture of twenty years ago, when Bob and I walked over to the Gulch from the highway. It showed the window we had seen in the main canyon just below Kane Gulch. How satisfying to experience the canyon glimpsed so long ago.



# NEW MEMBERS & addresses

Ackerman, John	P.O. Box 2463, SLC, Ut. 84110	
Austin, Marlene	5984 Starlite Dr., Murray, Ut. 84107	262-0680
Ballantyne, Geoff & Judy	533 Cleveland Ave., SLC, Ut. 84105	581-5287
Baty, Bonnie J.	755 Linden Ave., SLC, Ut. 84102	532-5598
Baudelaire, Patrick	330 Iris Way, Palo Alto, Ca., 94303	328-8570
Baum, Carl A.	167 "O" Street, SLC, Ut. 84103	533-8462
Belka, Wayne & Diana	957 Yale Ave., SLC, Ut. 84105	359-6229
Benjamins, Janet	938 Lowell Ave., SLC, Ut. 84102	355-4449
Berndt, Wayne	1411 Canyon Cove Glen #15, Ogden, Ut. 84401	393-4195
Riddle, Marcia	49 South 4th East, SLC, Ut. 84111	322-0012
Bliss, Carolyn	5390 Willow Lane #8, Murray, Ut. 84107	261-3848
Bos, Truus	154 S. 7th E. #7, SLC, Ut. 84102	532-9394
Brown, Mary Hearty	1380 S. 13th E., SLC, Ut. 84105	466-7604
Burton, Arlyne	1975 S. 11th E. #7, SLC, Ut. 84106	
Burton, John & Grace	2028 Sylvan Ave., SLC, Ut. 84108	467-5646
Carlton, June (Zonger)	535 Harding Hwy. #17E, Mays Landing, New Jersey 08330	
Carney, Helen	1611 E. Westminster, SLC, Ut. 84105	485-3996
Choules, Lew & Liz	1401 S. 10th E., SLC, Ut. 84105	466-4996
Clark, Lloyd A.	2300 W. 17th S., SLC, Ut. 84104	467-1257
Clayton, Courtney	7561 Silver Fork Dr., SLC, Ut. 84121	277-0726
Collins, Glenda	101 Starcrest Dr., Orem, Ut. 84057	
Comeford, Jack	10430 Haywood Dr., Wheaton, Maryland 20902	
Conn, Richard	382 Wall St., SLC, Ut. 84103	363-6035
Craig, Doug	935 3rd Ave., SLC, Ut. 84103	364-2007
Dennett, Herta K.	1746 Herbert Ave., SLC, Ut. 84108	582-4764
Doebbeling, Rolf	1841 S. 5th E., SLC, Ut. 84105	467-6636
Dougherty, Jean H.	1560 Willow Rd, Palo Alto, Ca., 94304	
Ehlers, Robert	4464 Fortuna Way, SLC, Ut. 84117	277-3648
Eisenberger, Jim	4306 Mark Read St., SLC, Ut. 84119	298-7501
Ellison, Robert & Ruth	1804 Harvard Ave., SLC, Ut. 84108	582-6660
Evans, Barry	1063 1st Ave., SLC, Ut. 84103	355-9746
Everson, Robert	4331 Rose Garden Ln., SLC, Ut. 84117	262-0228
Fagerness, Ann	1024 S. 9th E., SLC, Ut. 84105	322-5187
Frohboese, Robert	P.O. Box 318, South Fork, Colo. 81154	
Guthrie, Sharon	2588 Barbey Dr., SLC, Ut. 84109	485-0508

Haas, Walter O.	717 9th Ave., SLC, Ut. 84103	534-1262
Hart, David	8311 Top of the World Dr., SLC, Ut. 84121	943-0318
Hathaway, Dr. James	10455 Joeger Rd., Auburn, Ca., 95603	
Healy, George & Trudy	3978 Emigration Canyon, SLC, Ut. 84108	583-3411
Hendricks, Milo	441 University Village, SLC, Ut. 84108	582-3896
Hendrickson, John	8527 Harvard Park Dr., Sandy, Ut. 84070	561-5804
Hendrickson, Michael	2220 E. 33rd S. #15, SLC, Ut. 84109	484-2640
Hendrickson, Robert	1728 E. Woodside Dr. #39, SLC, Ut. 84117	277-4146
Herbert, John	1373 Lorl Lane #8, Ogden, Ut. 84404	393-7737
Herkhof, Dirk	8 N. 800 W. #1, Cedar City, Ut. 84720	586-6094
Hessing, Mark	755 Linden Ave., SLC, Ut. 84102	532-5598
Hill, Gary	3154 A Emigration Cyn., SLC, Ut. 84108	582-4982
Hobbie, John	P.O. Box 1450, APO, San Francisco, Ca. 96555	
Holland, Dorothy	P.O. Box 371, Moab, Ut. 84532	259-7871
Hughes, Bill	123 "G" Street, SLC, Ut. 84103	534-1814
Huser, Verne & Willa	2659 Beverly, SLC, Ut. 84106	485-9178
Jalota, Renu	2625 Stringham #301B, SLC, Ut. 84109	485-5798
James, Jayne	1539 E. 4070 S., SLC, Ut. 84117	272-5463
Johnson, Julie	74 E. 350 N. #A, No. Salt Lake, Ut. 84054	292-6578
Keller, Richard & JoAnn	4201 Mt. Olympus Way, SLC, Ut. 84117	278-6787
Kenster, Tom	5420 Willows Lane #E, Murray, Ut. 84107	261-1585
Key, Suzanne	139 S. 12th E. #1, SLC, Ut. 84102	363-1049
King, Joseph	673 6th Ave., SLC, Ut. 84103	355-8464
Kordig, James & Jean	8846 S. 1240 E., Sandy, Ut. 84070	255-3088
Louden, Virginia	1170 E. Herbert, SLC, Ut. 84105	581-9812
Marden, Donald & Doti	250 Elizabeth St., SLC, Ut. 84102	582-6636
Meyer, Robert & Susan	3190 Holiday Dr., No. Ogden, Ut. 84404	782-5708
Miller, Mary P.	5919 S. Brentwood Dr., SLC, Ut. 84121	
Monkhorst, Hendrik	2521 Park Circle, SLC, Ut. 84109	272-2529
Monter, Lou	1900 Douglas #8, SLC, Ut. 84105	
Morey, Lewis	3936 Meadow Green Dr. #8-1, SLC, Ut. 84120	299-5574
Moyers, Jack	8755 Tracy Dr., Sandy, Ut. 84070	255-8300
Nielson, Pat	1519 S. 19th E., SLC, Ut. 84108	484-4638
Nye, Ann	7080 Avrum Dr., Denver, Colo. 80221	
Omana, Michael	P.O. Box 1275, Kodiak, Alaska 99615	
Overfield, Theresa	1032 E. 4th S., SLC, Ut. 84102	328-9417
Palumbos, Alan	475 Ogden Canyon, Ogden, Ut. 84401	394-5632
Partridge, Ernest & Elinore	6536 S. 2425 E. SLC, Ut. 84121	942-5602
Paterson, Alan	1815 Millbrook Rd., SLC, Ut. 84106	466-3389
Peterson, Larry & Valerie	35 Layton Avenue, SLC, Ut. 84115	467-2419
Pilling, Janice	830 S. 12th E. SLC, Ut. 84102	582-5660
Provencher, Kay	4039 S. 2835 E. SLC, Ut. 84117	278-9760
Quinn, Barry & Barbie	3792 S. 2035 E. SLC, Ut. 84109	272-7263

Rea, Marilyn	1005 3rd Ave. #4, SLC, Ut. 84103	363-2108
Ross, Howard & Barbara	7089 S. Pine Cone, SLC, Ut. 84121	943-3370
Rouze, Janelle	233 S. 12th E. SLC, Ut. 84102	
Rubinfeld, Paul	2264 Foothill Dr. #203E, SLC, Ut. 84109	561-0980
Russell, Robyn	8311 Top of the World Dr., SLC, Ut. 84121	943-0318
Russell, Penny	3167 Nilo Way SLC, Ut. 84117	
Schell, John	P.O. Box 63, Park City, Ut. 84060	
Schneider, Robert & Margo	8721 Aspen Way, Sandy, Ut. 84070	942-4471
Speaks, Leslie	650 Brittany Dr. #110, Murray, Ut. 84107	266-1091
Speigel, Larry	2480 NW Raleigh, Portland, Oregon 97210	234-6839
Stout, Elizabeth	250 Brattle St. Cambridge, Ma. 02138	491-3138
Swanson, Ralph & Renata	786 N. 9th W. #303, SLC, Ut. 84116	524-5637
Taylor, Micheal J.	1701 North Tyndal #2G, Tuscon, Arizona 85719	884-8360
Terry, Dale & Angela	1105 Coppet St., Fairbanks, Alaska 99701	
Thompson, Ilene	70 "H" Street #2, SLC, Ut. 84103	359-1613
Todd, Harry	4165 Holloway Dr., SLC, Ut. 84117	277-1047
Topik, Nick & Sunny	633 S. 5th W., Brigham City, Ut. 84302	723-3497
Van Moorhem, William	276 "B" Street, SLC, Ut. 84103	359-1624
Velick, Martha	4183 Parkview Drive, SLC, Ut. 84117	277-2110
Viavant, Bill	220 Iowa Street, SLC, Ut. 84102	322-0259
Wagner, Howell & Deneige	1732 Orchard Drive, SLC, Ut. 84106	278-6357
Wallace, Barbara	1243 E. Alameda Ave., SLC, Ut. 84112	355-5467
Weatherbee, Bob & Judy	5664 S. St. Charles Place, SLC, Ut. 84121	272-5510
Weatherbee, Karen	909 19th Ave. #1, Greeley, Colo. 80631	356-5138
Wehrli, Beth	153 Windsor Street, SLC, Ut. 84102	533-2044
Westbrook, George	582 S. 4th E., Sandy, Ut. 84070	561-0980
Whitehead, Jude	4440 W. 5655 S., Kearns, Ut. 84118	966-0783
Wise, Sarah	1032 E. 4th S. #403B, SLC, Ut. 84102	532-5106
Woody, Helyn	386 East Woodlake Cove #203, SLC, Ut. 84121	
Zalut, Clyde & Bobbie	70 Fenway #11, Boston, Ma. 02115	
Zavortink, Michael	179 "S" Street #2, SLC, Ut. 84103	364-1620
Ziemba, Ron & Diane	Route #1, Fillmore, Missouri 64449	



#### WINTER CHEER:

Due to the many requests for the recipe for the hot spiced wine served at the Halloween party, we are publishing it here:

Take a large pan and add the following:  
 2 cups sugar  
 4 cups water  
 3-4 sticks cinnamon  
 12-18 whole cloves  
 12-18 whole allspice

Simmer this for 1 to 2 hours, stirring to dissolve the sugar. The longer this is heated, the more spice flavors extracted. Remove from heat and add the following:

3 cups orange juice  
 1/2 cup Realemon juice  
 1 gallon red wine (your choice)

This mixture may be stored in the refrigerator for several months. To serve, heat to the point where vapors are being given off. Do not boil since the alcohol will disappear.

A feature length journey into the incredible world of vertical ice climbing, rock climbing, skiing and hang gliding in the high mountains.



COME CLIMB WITH US ON:

The first ascent of Bridalveil Falls, Colo. An extremely difficult vertical ice climb.

The first winter ascent of the NW face of Half Dome. A six day journey up the 2,000 foot face.

The first winter ascent of Lost Arrow spire in Yosemite Valley in winter.

COME FLY WITH US OFF 11,000 foot rocky peaks over lakes into fiery sunsets.

COME SKI WITH US and see incredible aerial acrobatics, ballet, powder and alpine descents.

IN THE REALM OF THE VERTICAL is an experience you must see to believe.

Utah Fine Arts  
January 13, 1976

University  
of Utah  
January 19,  
20, 1976

Both at 8 pm.

Admission: \$2.00

Personally narrated by George Lowe

\*\*\*\*\*  
WINTER SEASON \* \* \* WMC LODGE

Tired of lift lines and high price of lift passes? Make the lodge your headquarters for cross-country skiing and snowshoeing.

Available overnights, week-ends, parties. Main Floor Lounge. Two dormitories. Gas heating and cooking.

No charge to members. Minimal charge to non-member groups.

Call lodge director for reservations.



# Nominations 1976

by Ken McCarty

After numerous phone calls and much head scratching, your nominating committee has come up with the following candidates for the WMC Board of Directors for the coming year. We appreciate the assistance we have received from club members and especially thank those who have consented to run for office.

Further nominations from the general membership can be made at the Nomination Banquet January 9. We request that the nominators have written consent of the nominee or that the nominee be present at the banquet.

## Board of Directors Nominations

President	Judy Davis, Gary Larsen
Secretary	Diana Schoenberg
Treasurer	Mel Davis
Boating	Bob Weatherbee
Conservation	Sam Allen
Entertainment	Mary Manley
Hiking	Mike Hendrickson
Lodge	Randy Taylor
Membership	Judy Weatherbee
Mountaineering	John Gottman
Publications	Joyce Sohler
Ski Touring	Rolfe Doebbeling, Andy Schoenberg
Kayaking	Dan Thomas
3 year Trustee	Dale Green

## THE LODGE



WINTER LODGE WEEKENDS. Come on up!  
Pipes are frozen, so bring water.  
Driveway is snowed in, so walk up  
hill from ski parking lot. Tobog-  
gans are helpful for hauling gear.

### WANT TO HOST THE LODGE?

Volunteer for one of these dates:  
Sat-Sun, March 13-14  
Sat-Sun, March 27-28 } include  
Sat-Sun, April 10-11 } Friday,  
Sat-Sun, April 24-25 } optional

CALL Leona Conn, 363-6035.



# JHCOB WALL

November 16

by  
Bonnie Baty

Well, it was the last climb.... well, it was the last climb.... Two weeks later it was really the last. But then again, a little sun and bare rock and well, why not? The enticing south-facing slabs across the canyon did not daunt the nine diehards as we clambored up various routes in the area of JHCOB wall. Classical inside and outside corner and inside-outside corner (or was it outside-in?) and Gottman's special, hereby christened Wierd Route (that wierd route?) - a three hour bargain on the first pitch, with aid. Perkin's bloody ascent (rock, where? Ouch! \*\*#?\*\*) added color to the brisk fall scene. Of course, we all thought we had earned the excuse to adjourn to Treshow's for another slosh, guzzle and stare session (food, drink and the Million Dollar Man).

Participants: Audrey Stevens, Mike Treshow, Bill Shephard, Lorie Cahn, Larry Perkins, Gwen Ryan, Rennie Jackson (on time as usual), John Gottman, and Bonny Baty.



## TRAIL GUIDES

---

Wasatch Trails \$1.50

HIGH UINTA TRAILS \$2.95

Cache Trails \$1.50

Wind River Trails \$2.95  
postpaid from:

Wasatch Publishers, Inc.

4647 Idlewild Rd.

Salt Lake City, Ut. 84117

The Cascade Parka from Camp 7 is designed with features not found on any other parka.

No sewn through shoulder seams; two-way hand warmer pockets; bias bound inner sideseams; waist drawstring with locking sliders; Talon #9 nylon two-way ladder coil zipper; snap-over zipper flap; optional down hood; 10-oz. prime down, Minimum 525 fill; 1.9-oz. Ripstop Nylon shell.



## A Cure

## For The Common Cold

Camp 7's Cascade comes in 7 sizes from Extra Extra Small to Extra Extra Large. Colors: Navy, Rust and Green. All Camp 7 products are fully guaranteed against defects for as long as you own them.



Kirkham's  
AAA TENT  
& AWNING  
COMPANY

24 West 5th South  
328-0181



A P P L I C A T I O N   F O R   M E M B E R S H I P

WASATCH MOUNTAIN CLUB  
3155 Highland Drive  
Salt Lake City, Utah 84106  
363-7150

NAME (Print) \_\_\_\_\_ Telephone \_\_\_\_\_

Name of spouse (only if spouse wants membership also) \_\_\_\_\_

Address \_\_\_\_\_ ZIP \_\_\_\_\_

Occupation (Optional) \_\_\_\_\_

I hereby apply for membership in the Wasatch Mountain Club and enclose \$ \_\_\_\_\_ as my annual membership dues for the year \_\_\_\_\_, \$ \_\_\_\_\_ of which is for a subscription to the Rambler for the year and \$4.00 entrance fee. (If joining during January thru August, dues are \$6.00 of which \$5.00 are for a Rambler subscription -- Spouse dues (non-subscribing) are \$3.00 additional. If joining during September thru December, dues are \$3.00 of which \$2.50 are for a Rambler subscription -- Spouse dues (non-subscribing) are \$1.50 additional. Add \$4.00 entrance fee to each application, single or couple. Subscriptions are not deductible from dues.) I (do) (do not) desire to receive the Rambler.

I have attended two Club activities in the past 12 months as required for membership such as hikes, ski tours, camping trips, rock-hound trips or work parties and have been recommended by two trip leaders who are Club members. Events such as lodge parties, winter socials, lectures, meetings, etc. are not activities qualifying for membership. I agree to abide by all the rules and regulations of the Club as specified in the Constitution and Bylaws as determined by the Board of Directors.

I am specifically interested in the items checked below:

Hiking \_\_\_\_\_ Ski Touring \_\_\_\_\_ Boating \_\_\_\_\_ Mountaineering \_\_\_\_\_ Cycling \_\_\_\_\_

Conservation \_\_\_\_\_ Writing and Editing \_\_\_\_\_ Organizing social activities \_\_\_\_\_

Lodge Work \_\_\_\_\_ Photography \_\_\_\_\_ Other \_\_\_\_\_

CLUB ACTIVITIES ATTENDED:

1. \_\_\_\_\_ Date \_\_\_\_\_ Signature of recommending Trip Leader \_\_\_\_\_

2. \_\_\_\_\_ Date \_\_\_\_\_ Trip Leader \_\_\_\_\_

(Note: The signature of a Director may be substituted for one Trip Leader.)

\_\_\_\_\_  
Signature of Applicant

# Wind Rivers High Camp

August 31-September 2      by  
Jude Whitehead

Labor Day in the Cirque of the Towers was spectacular for some 20 of our mountaineers. We met at the Big Sandy Openings for a leisurely breakfast and soon were spread out on the trail. Lunch was shared by small groups at Big Sandy Lake as speculations were voiced on the time and distance over Jackass Pass to the Cirque. Plaudits on the first day out went to Jeff and Judy Ballantyne for getting lost and missing the Cirque to camp. With dinner over and various camps set up, we proceeded to the important matters at hand: as Gottman would say "never ever having any FUN anymore."

A spectacular sunrise greeted our happy and eager climbers on Sunday. Climbs and hikes included: Wolf's Head Traverse, done by Larry Perkins, John Gottman, John Alto and friend; Shark's Nose, by Gribble and Paul Pingora; South Side, by Lew Hitchner and John Mason; Pingora by Jim Key, Bill and Diane Shepard, Bob Banford, George Westbrook, Geoff and Judy Ballantyne; Lizard Head, by Jackie Thomas and Lorie Cahn; and Mitchell, by Leroy Kuehl, Jude Whitehead and Martin Knaphus.

Tall tales of mountaineering to the tune of Judy's bagpipes and lubricated with Leroy's wonderful wine finished a lovely trip.

Leader: Jim Key. Participants: John Alto and friend, John Mason, Paul Horton, John Gottman, Larry Perkins, Jackie Thomas, Bill Shepard, Diane Shepard, Bob Banford, Hal Gribble, George Westbrook, Geoff and Judy Ballantyne, Lorie Cahn, Lew Hitchner, Jude Whitehead, Martin Knaphus, and Leroy and Barbara Kuehl.



WIND RIVER Encampment over Labor Day, 1975. From a slide by Lew Hitchner.

WASATCH MOUNTAIN CLUB, INC.

3155 Highland Drive Salt Lake City Utah 84106

Vol. 53, Issue 1 (1976)

SECOND CLASS  
POSTAGE PAID  
AT SALT LAKE  
CITY, UTAH.

BOARD OF DIRECTORS

DALE GREEN	PRESIDENT	277-6417
JUDY DAVIS	SECRETARY	272-6435
MEL DAVIS	TREASURER	278-3174
KEN McCARTY	BOATING	466-3297
MIKE OMANA	CONSERVATION	561-4537
PEGGY TAYLOR	ENTERTAINMENT	272-4824
MIKE HENDRICKSON	HIKING	484-2640
DANNY THOMAS	KAYAKING	561-8606
DESIREE (DIZ) WAYS	LODGE	582-3878
JUDY WEATHERBEE	MEMBERSHIP	272-5510
JOHN GOTTMAN	MOUNTAINEERING	359-4893
MICHAEL TRESHOW	PUBLICATIONS	467-1022
DWIGHT NICHOLSON	SKI TOURING	359-6178