

The Rambler

Official publication of THE WASATCH MOUNTAIN CLUB

NOVEMBER 1976 Vol. 53, Issue 11



News and Notices

COVER: Fall sunset in Salt Lake City.
Watercolor by Joyce Sohler.

Rambler Deadline

...for December is November 13, Saturday. Please type (double-space) your articles or schedules, indicate your telephone number(s), and place slides or prints in protective folders. Mail to (or drop by):

Wasatch Mountain Club
3155 Highland Dr.
Salt Lake City, Utah 84106
ATTENTION: RAMBLER EDITOR

Thanks....

- ...to Larry Hoskins for contributing his time and talents in laying-out and pasting up this month's Rambler.
- ...to Diane Ziemba for typing articles and materials.
- ...to Dale Green for mailing the current issue.

THE RAMBLER is published monthly by the Wasatch Mountain Club, Inc., 3155 Highland Drive, Salt Lake City, Utah, 84106, telephone 363-7150. Subscription rates of \$5.00 a year are paid for by membership dues only. Prospective members may obtain 2 free RAMBLERS (consecutive months) by contacting Club headquarters or the Membership Director. Direct all correspondence regarding changes of address, mailing, etc., to the Membership Director at the above address. Second Class Postage is paid at Salt Lake City, Utah.

HITCHED: Michael (71b.5oz.) to Roy & Marilyn Keir on 8/28/76.

WELCOME BACK: Dennis & Karen Caldwell from Sweden. They will be staying with Mel & Clare Davis temporarily.

WANTED: Volunteers for RAMBLER typing pool. Please call Joyce Sohler at 272-2624.

The Wasatch Mountain Club is governed by a Board of Directors - 13 representatives elected by the membership. Through the courtesy of Timberline Sports, our mail is sent to their address, 3155 Highland Drive, for collection only. The Club's telephone is located at O'Dell's Shoe Repair Shop, 425 South 8th West. This phone is maintained as an answering service only by Life Members 'Pete' (O'Dell) Peterson and wife 'Pinky'. They take time out from their work to answer the phone and relay incoming messages to the proper Director. The Petersons do not hold any office, or attend Board meetings, or are they informed by the Board of official actions. If a trip leader cannot be contacted or is not specified, call the Director of that department for information. The Board strongly desires to hear comments, suggestions, inquiries, and criticisms concerning the operation of your Club. Please feel free to phone any Director or write to the President. Names will be withheld upon request, but anonymous letters will be disregarded.

Mountain Club business is conducted only on the first and third Wednesdays of each month. At that time, and only at that time, is the mail opened, new membership applications voted on, dues payments recorded, address changes made, and all other business requiring board action conducted. All board members cannot attend all board meetings and although an effort is made to fill in during a member's absence, some business is held for action until the next meeting.

Club Activities ...

November, 1976

AVALANCHE INFORMATION is available from the Wasatch National Forest winter sports information recording, 486-6333. The information is more complete and up-to-date than in the past, so their recommendations can be relied upon. If you have any further questions on avalanche conditions, call Andy Schoenberg, 466-6531. Avalanche probes, cords and shovels are required on advanced tours at the discretion of the leader. Probes are available for rent through the Ski Touring Director. Electronic transmitter-receivers are now available through Timberline Sports and are recommended for advanced tourers.

RATINGS OF SKI TOURS (X,Y) describe the difficulty of the climb (X) and the skiing proficiency required to get down (Y). Both are rated from 1 to 6, in order of increasing difficulty. Contact the leader if you are in doubt about your ability to do the tour.

REGISTRATION WITH THE TRIP LEADER is important for ski tours as weather and snow conditions can cause cancellations or changes in destination. It also aids in organizing car shuttles early enough to avoid delays. Register by some reasonable hour on the day before the tour is scheduled.

(Note: See article and charts by Dave Hanscom and Dwight Nicholson in the November RAMBLER for a more detailed description of and ratings for the more popular Wasatch ski tours.)

NOVEMBER 11
Thursday

The Ski Touring committee will meet to formalize ski touring activities for December through February at 8:00 p.m. at the Schoenberg's, 1219 E. Ridgedale Lane (3400 South). Additional members who wish to help organize these activities are welcome. For further details, call Andy or Diana Schoenberg at 466-6531.

NOVEMBER 13-14
Saturday-Sunday

The Lodge is available for WMC members. For information, call Randy Taylor at 272-4624.

NOVEMBER 13
Saturday

EARLY BIRD SKI TOUR. Snow conditions permitting, this will be the first beginner-intermediate WMC tour of the 1976-77 season. Meet at the mouth of Big Cottonwood Canyon at 9:00a.m. Call Milt Hollander at 277-1416 for further details.

NOVEMBER 20
Saturday

MT. OLYMPUS NORTH FACE CLIMB. This will be a difficult all-day event, most of which is roped. An early start, winter clothing, pitons, hammers, and flashlights--as well as good conditioning and determination--are required. Call the Mountaineering Director at 328-8066, Ext. 359.

NOVEMBER 21
Sunday

INTERMEDIATE SKI TOUR. The destination will be determined by snow conditions. Meet at the mouth of Big Cottonwood Canyon at 9:00 a.m. Leader: Dave Hanscom, 487-6065.

NOVEMBER 25-28
Thursday-Sunday

GRAND GULCH BACKPACK. The Grand Gulch Primitive Area lies just south of Natural Bridges National Monument. The gulch itself is not as spectacular as Escalante or Canyonlands but contains extensive areas of colorful Anasazi ruins and petroglyphs. The gulch sits on Cedar Mesa at elevations ranging from 5700 to 5200 feet. With the hope for good weather, we plan to follow this exciting canyon from Bullet Canyon to Collins Gulch and explore the ruins along the way. The backpack of approximately 25 miles will involve about 6 miles of hiking per day. Call Mike Hendrickson at 278-9856 for details and meeting place.

NOVEMBER 25
Thursday

THANKSGIVING DAY SKI TOUR. An appetite-building tour in the morning is suggested to get everyone ready for dinner. Bring your touring gear and be ready to go about 10:00 a.m., from the Lodge. The tour will be organized in an impromptu fashion. Leader???

NOVEMBER 25
Thursday

THANKSGIVING DINNER AT THE LODGE. Bring your family, table service, skis, snowshoes, toboggans and THANKS to the Lodge again this year. Dinner will be around 4:30 p.m. This is a planned potluck so call John or Grace Burton at 467-5646 (between 6:00 and 10:00 p.m.) to discuss your contribution(s). Capacity of the Lodge is limited to about 90 people. Reservations will not be accepted after Sunday night, November 21. Be prepared to reimburse the turkey providers. The Lodge is open overnight and through the weekend.

NOVEMBER 25-28
Thursday-Sunday

The LODGE is available to WMC members through the holiday weekend. Bring your winter clothing, sleeping bags, food, tableware, and cooking utensils. As of press time, there are no hosts for Friday, Saturday, and Sunday nights. Any volunteers? Call Randy Taylor at 272-4624 for further details.

DECEMBER 11-12
Saturday-Sunday

The LODGE is available to WMC members. For information, call Randy Taylor at 272-4624.

HAPPY THANKSGIVING



CONSERVATION RAMBLINGS

by Walter Haas

On September 29, the U.S. National Park Service held a public workshop to discuss management objectives for Canyonlands National Park. The workshop, held in the auditorium of the State Office Building in Salt Lake City, was attended by about fifty people, including club members Mel Davis, Randy Frank, Walter Haas, Dave Hart, Mike Hendrickson, Marty MacKnight, and Dan Thomas. The Park Service divided attendees randomly into six groups of equal size. Each group was instructed to independently determine a complete set of management objectives for the park by consensus, if possible. There was little difficulty in achieving consensus as almost everyone present was greatly concerned about preserving the quality of the environment and protecting it from excessive use.

The above workshop was the last of four scheduled workshops. The others were held in Moab, Phoenix and Denver. According to Jim Isenogle, Utah State Director of the Park Service, attendance ranged from about fifty at Phoenix to about one hundred at Denver. All four meetings were heavily dominated by environmentalists. The largest turnout of any other interest group was in Moab--about 30 per cent of the eighty attendees were four-wheel-drive enthusiasts. The environmentalists, representing the majority group, were mostly from southwestern Colorado.

These workshops play an important role in the planning process of the National Park Service. The Park Service maintains some statistics on park use. In the developed compgrounds, the count of vehicles is undoubtedly a reliable measure of that type of use. Many parks require a backcountry travel permit for travel outside the developed areas. The issuance of these permits is considered a reasonably reliable indicator of backcountry travel. The only other source of visitor statistics is the guest register. The latter is not considered a very reliable indicator of anything.

The Park Service has no direct measure of why people use the National Parks. No survey of park users to determine this issue is planned or authorized. The question is likely to become an important one as park use is growing at an increasing rate. So far, the only statistically significant change in the pattern of park use is that the average visitor's length of stay has increased considerably in the last year. As population pressure on the National Park system increases, the balance between quantity of use and quality of use will become more and more difficult to find.

Since these workshops represent a major input to the planning process, it is important that the WMC be well represented. Also, club members need to make a special effort to comply fully with regulations requiring backcountry travel permits--not only to abide by the law but also to guarantee that the Park Service does not underestimate the interest in this type of use.



Fall Woodgathering Party



by the LODGE DIRECTOR

September 25



The annual WOODGATHERING PARTY at the Lodge was a great success. Enough wood was cut and split to last through another cold winter. "Thank yous" are in order to all of the members who took part. Special appreciation is due Jude Whitehead for another great meal; Mary Manley for the drinks; Sam Allan, John Riley, Ed Cook, and Paul Horton for the trucks; Elmer Boyd for the chain saws; Richard and Mary Craven for the new Lodge Rules' poster; and Dick and Leona Conn for renting the electric chain saws.

This kind of membership support keeps the Lodge running.



ENERGY MISER -- BLUE RIBBON HOMES



Sam Allen

- * 10" INSULATION IN CEILINGS
- * MAXIMUM WALL INSULATION
- * HEAT CIRCULATING FIREPLACES
- * DOUBLE PANE INSULATED GLASS
IN WINDOWS AND DOORS

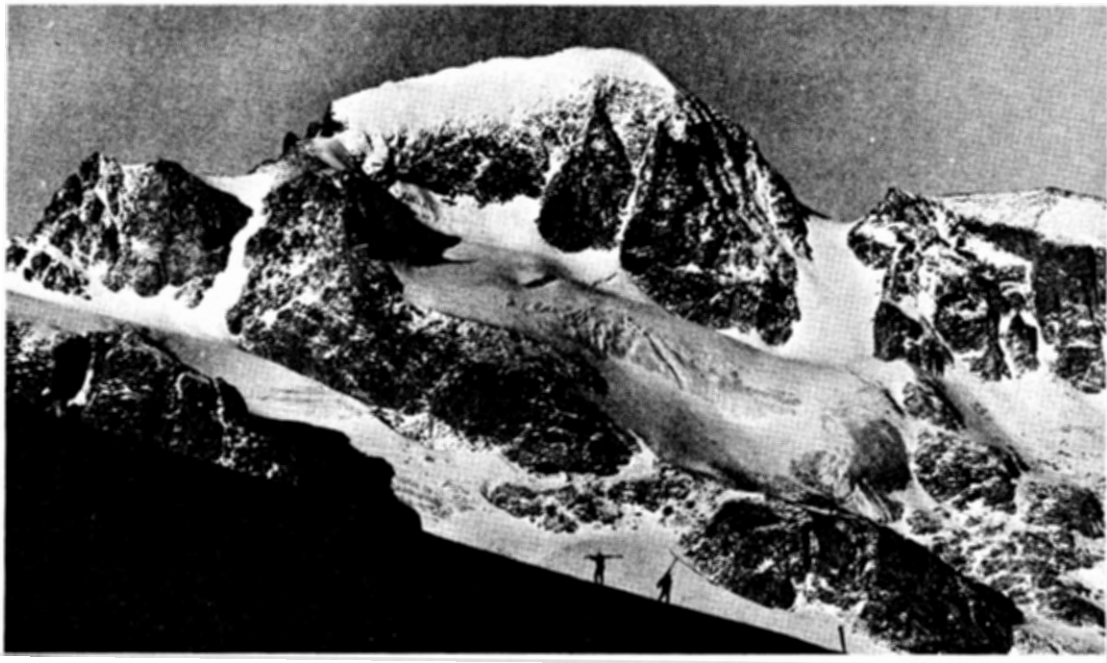
"BLUE RIBBON REALTOR"

WE HAVE A NEW ADDRESS BUT WE'RE STILL THE SAME !

545 E. 4500 S. Professional Plaza
Suite E 130 Murray, Utah 84107

Office: 261-2791

Home: 942-3149



Garnet Peak, Wyoming. Photo by Alexis Kelner.

BIRTH ANNOUNCEMENT

TO: ALEXIS KELNER & DAVE HANSCOM

NAME: **WASATCH TOURS**

(THE LONG AWAITED SKI TOURING GUIDE)

SIZE: $5\frac{1}{2}$ by $8\frac{1}{2}$, 224 PAGES, 140 PHOTOS (MOSTLY AERIALS)

BORN: NOVEMBER 15, 1976, 3:47 a.m. (Kelner's usual delivery time)

AT: WASATCH PUBLISHERS, INC.
4647 Idlewild Road, Salt Lake City, Utah 84117

IN SPITE OF A TWO YEAR (ABNORMAL) PREGNANCY, AND AN EXTREMELY PAINFUL (BREACH) DELIVERY, THE PROUD (AND WEARY) PARENTS ARE EXPECTED TO RECOVER IN TIME FOR THE COMING SKI TOURING SEASON

MIDWIFE: BILL ROSQVIST

(WMC members may get a copy at a special pre-published price of \$3.95 postpaid by mail from the publisher.)

Guide to Ski Touring in the Wasatch

by Dave Hanscom and Dwight Nicholson

The difficulty of a ski tour is not easy to define. It depends to a large extent upon the condition of the snow, which varies from one day to the next, (and even from one hour to the next) due to snowfall, wind velocity, air temperature and the location of the route relative to exposure to wind and sun.

It also depends upon the weather, the physical condition of the tourer, the particular route chosen, and equipment.

For Nordic skiers, correct touring techniques and ability to choose the proper wax makes all the difference in the world. The only parameters that are constant on a ski tour are the vertical rise and the horizontal distance.

With these facts in mind, an attempt has been made to rate the ski tours in the Wasatch. The rating system is in the form (X,Y), where X describes the difficulty of the climb, and Y indicates the skiing proficiency required to get down. Both are rated from 1 to 6, in order of increasing difficulty. For example, Day's Fork is rated (2,4); it involved a relatively short climb of 1900 feet in 1.5 miles from Alta, but the descent includes an extremely steep bowl where avalanche danger can be quite high. These numbers are necessarily relative, and are meant only to give the tourer a general idea of the required ability level necessary under good skiing conditions.

To put the skiing proficiency part of the rating into perspective, a comparison can be made to slopes at the ski areas. Skiers with ability to handle Main Street, Pay Day, or Majestic with confidence could take tours rated 1 or 2; they should have mastered the kick turn, however, for the sections where it is the only alternative to turning in the powder. Nordic skiers should also be able to manage these tours with good snow conditions, particularly the ones with long run-outs. A rating of (3) requires intermediate skiing skills, as would Collins Face, Bob's Bowl, Millicent, or Thaynes; ability to turn in unpacked snow becomes more important. The higher rated tours are for advanced skiers who can manage any snow conditions; sometimes the survival instinct helps, too.

The table on the opposite page (much of which is taken from the December, 1968, RAMBLER article by Charles Keller) contains data on 37 of the most popular tours in the Wasatch. They are listed in approximate order of difficulty to assist your go/no go decision.

This year we have decided to add to the general ratings a column for Nordic Ability and/or suitability. The rating here is Beginner (B), Intermediate (I), Advanced (A), and Not Advised (N/A). A Beginner would be the person who has only been on Nordic skis a few times, and has a lot of difficulty with downhill sections. Intermediate ratings would refer to those people who have been out a number of times

and can do a good stop and kick turn, or an adequate stem turn. The advanced tours are for those who can handle most everything on Nordic skis given decent snow conditions. We have also noted those tours that are not advised for Nordic skis, mainly because the slope is so severe, or the snow conditions are so poor, that it would be a survival situation on Nordic skis.

It is suggested that you not go on a tour that is much further down the list than the most difficult one that you have taken in the past. A skier who goes on a trip that he can't handle not only endangers and discourages himself, but he compromises the enjoyment of the entire party. If in doubt, the tour leader or ski touring director will be happy to advise you.

A map of the ski touring routes in the Alta-Brighton area is available from the Wasatch National Forest office at 3070 East 3300 South.

One final comment should be made regarding ski tours taken by individuals who like to get out on their own. Snow conditions in the Wasatch are extremely variable, and thanks to our large accumulations, avalanche danger can be extremely high. It is advisable before going on a tour to ascertain that the snow is safe in the area, to never go alone, and to let someone know your route and schedule. The Forest Service Alta Guard Station will provide information on weather and snow conditions, but they cannot be responsible for deciding if you should take the tour. Your own common sense must be your guide.

(Note: The above article was re-typed from the November, 1975, RAMBLER article.)

| Description | Lift | ASCENT | | DESCENT | | Rating | Nordic |
|---|------------|--------|-------|---------|-------|--------|--------|
| | | Dist. | Vert. | Dist. | Vert. | | |
| Wolverine Cirque from Brighton | Millicent | 0.7 | 350 | 1.6 | 1330 | 1,2 | I |
| Lake Solitude | | 1.4 | 300 | 1.4 | 300 | 1,2 | B |
| Snake Creek Pass from Brighton | Majestic | 1.0 | 840 | 1.4 | 1240 | 1,2 | B |
| Catherine Pass from Alta | Albion | 1.0 | 740 | 2.3 | 1680 | 1,2 | B |
| Alta from Brighton via Twin Lakes Pass | Millicent | 1.1 | 275 | 1.1 | 1430 | 1,2 | I |
| Dog Lake via Mill D - North | | 2.3 | 1460 | 2.3 | 1460 | 2,2 | B |
| Mill F | | 2.2 | 1000 | 2.2 | 1000 | 2,2 | I |
| Desolation Lake via Mill D - North | | 3.3 | 1960 | 3.3 | 1960 | 2,2 | B |
| Catherine Pass from Brighton | Majestic | 1.5 | 1020 | 1.8 | 1440 | 2,2 | I |
| Mill Creek from Park City West (to Log Haven) | P. C. West | 0.5 | 150 | 7.7 | 3300 | 1,2 | I |
| Park City from Brighton via Scott's Pass | | 2.0 | 700 | 3.8 | 2500 | 2,2 | I |
| Brighton from Park City via Scott's Pass | Gondola | 1.8 | 400 | 2.0 | 700 | 2,2 | I |
| Honeycomb from Solitude (to cirque) | | 3.0 | 1400 | 3.0 | 1400 | 2,2 | I |
| Mineral Fork | | 2.9 | 1890 | 2.9 | 1890 | 2,2 | I |

| Description | Lift | ASCENT | | DESCENT | | Rating | Nordic |
|---|-----------|--------|-------|---------|-------|--------|--------|
| | | Dist. | Vert. | Dist. | Vert. | | |
| White Pine Lake, Red Pine Lake | | 2.7 | 2400 | 2.7 | 2400 | 3,2 | I |
| Honeycomb from Brighton | Evergreen | 0.6 | 500 | 3.5 | 2140 | 1,3 | A |
| Mt. Wolverine from Alta | Albion | 1.2 | 1205 | 1.8 | 2035 | 2,3 | A |
| Silver Fork from Brighton via Twin Lakes Pass | Millicent | 1.6 | 470 | 2.8 | 2460 | 2,3 | A |
| Mill Creek from Mill D No. via Dog Lake (to Log Haven) | | 2.3 | 1460 | 6.4 | 2900 | 2,3 | I |
| Cardiff Fork from Alta | | 1.0 | 1360 | 5.9 | 2750 | 2,3 | A |
| Silver Fork from Alta | | 1.8 | 1610 | 2.8 | 2510 | 2,3 | A |
| American Fork from Alta (to S. Fork Ranger Station) | Sugarloaf | 0.3 | 160 | 12.6 | 4450 | 1,3 | I |
| Mary Ellen Gulch from Alta (to S. Fork Ranger Station) | Sugarloaf | 0.3 | 160 | 10.6 | 4450 | 1,3 | N/A |
| Neff Canyon | | 3.2 | 3960 | 3.2 | 3960 | 4,3 | N/A |
| Days Fork from Alta | | 1.5 | 1890 | 3.5 | 3140 | 4,4 | A |
| Major Evans Gulch from Alta (to S. Fork Ranger Station) | Sugarloaf | 2.9 | 480 | 7.4 | 4770 | 2,4 | N/A |
| White Pine from Alta | Sugarloaf | 3.4 | 330 | 3.0 | 3140 | 3,4 | N/A |
| Mt. Raymond via Butler Fork | | 3.5 | 3140 | 3.5 | 3140 | 4,4 | A |
| American Fork from White Pine via Silver Lake (to S. Fork Ranger Station) | | 3.4 | 3030 | 7.6 | 580 | 4,4 | N/A |
| Maybird from White Pine | | 3.4 | 2440 | 2.0 | 3175 | 3,5 | N/A |
| Alpine from White Pine via Dry Creek | | 3.7 | 3000 | 6.5 | 5560 | 4,4 | N/A |
| Hogum from White Pine | | 3.6 | 2700 | 3.1 | 3660 | 3,5 | N/A |
| Alexander Basin from Butler Fork (to Log Haven) | | 3.6 | 3145 | 5.4 | 4140 | 3,5 | N/A |
| White Pine from Alta via Twin Peaks | Sugarloaf | 2.4 | 1075 | 4.0 | 3875 | 3,5 | N/A |
| Major Evans Gulch from Alta via Twin Peaks (to S. Fork Ranger Sta.) | Sugarloaf | 2.4 | 1075 | 8.1 | 5360 | 3,5 | N/A |
| Mineral Fork from Alta | | 2.3 | 2180 | 3.1 | 4160 | 3,5 | N/A |
| Lake Blanche from Alta | | 1.9 | 2060 | 4.3 | 4500 | 3,5 | N/A |



NOTES ON **'76** **SKI TOURING**

S. NELSON

The first meeting of the 1976-77 season Ski Touring committee was held on October 8, 1976, to set preliminary plans for ski touring activities. Participants were:

| | | | |
|------------------|----------|-------------------|----------|
| Elmer Boyd | 299-7814 | Dwight Nicholson | 359-6178 |
| Dave Hanscom | 487-6065 | John Riley | 485-2567 |
| Trudy Healy | 583-3441 | Oscar Robison | 943-8500 |
| Milton Hollander | 277-1416 | Jacqueline Thomas | 487-9340 |

The next meeting is scheduled for Thursday, November 11, 1976, at 8:00 p.m., at Andy Schoenberg's house, 1219 Ridgedale Lane (3400 South). Additional WMC members wishing to help organize this year's winter activities are welcome. Please contact Andy or Diana Schoenberg at 466-6531.

FREE SATURDAY SKI TOURING CLINICS offer beginner instruction and, in some cases, more advanced tours may be scheduled. Some also offer evening discussions (such as, at Timberline Sports). However, in all instances, it is important to call the respective shops and find out the details:

| | | |
|------------------------------|---------------------|----------|
| Timberline Sports | 3155 Highland Drive | 466-2101 |
| Wasatch Mountain Touring Co. | 779 East 300 South | 359-9361 |
| Village Sports Den | 1384 Foothill Drive | 582-5611 |
| The Mountaineer | 1035 East 200 South | 582-2338 |

The Ski Touring Clinics provide a very good way to get into the sport and enough instruction to participate in a WMC beginner tour.

**When only
the best will do.**

THE FINEST IN SKI EQUIPMENT



DOLOMITE



HEXCEL sports, inc. 
ROSSIGNOL SKI COMPANY INC.

americana

service · sales · rentals
OVERNIGHT SKI SERVICE
 Pick-up and delivery at most
 Salt Lake Fine Hotels

THE MOUNTAINEER

207 South 13th East
 and now at
TROLLEY SQUARE
 Phone 582-2338

From The Entertainment Director

Well deserved THANKS go to all those generous persons who volunteered (or were drafted) to cook hamburgers for the Thursday night sessions. Your efforts were appreciated by all the hungry hordes of mountain climbers and hikers. Special thanks go to Marlene Austin who somehow wound up cleaning the stove three times. Have you recovered from your "dishpan hands" yet?

While talking about volunteering, it is almost time to start thinking about those winter (ALREADY?) ski socials. For new members who are unfamiliar with them, ski socials are planned for every other Sunday evening at the host house. A small fee is charged for drinks, snacks or a light meal. There is no charge for the pleasant company and the socializing. If you are interested in HOSTING such an evening, please call Mary Manley at 277-6307. The first one will be held on Sunday, January 16, 1977. So pick one or two dates that you are interested in and we can firm up the details later.

FLAGSTAFF PEAK

August 29

by Barbara Kuehl

The aromatic smell of Penny Royal greeted the 19 hikers as they reached Flagstaff Peak within minutes of one another. The northern, longer route going up Day's Fork did provide shade a good part of the way. Those making the trek were Trudy Healy (leader), Barbara Kuehl, Reg Swartz, Larry Hoskins, Paul Rubinfeld, Larry James, Judy Steiger, Sara Shopkow, Jim Frese, Tom Stephens, Penny Russell, Margaret Strickland, John Veranth, Peta Torry, Michelle Holdaway, Shelley Hyde, Laura Gralsenauer, Cal Osburn, and John Riley.

STATEMENT OF OWNERSHIP, MANAGEMENT AND CIRCULATION is required annually of all second class permit holders.

THE RAMBLER is published monthly by the Wasatch Mountain Club, Inc., 3155 Highland Drive, Salt Lake City, Utah, 84106. The above address serves as the publication office and the general business office. The Editor is Joyce Sohler, 4172 Sunset View Dr., Salt Lake City, Utah, 84117. The Managing Editor is Michael Treshow, 1798 Millbrook Rd., Salt Lake City, Utah, 84106. THE RAMBLER is wholly owned by the above-named corporation, a non-profit corporation. There are no individual owners, bondholders or other security holders. 700 copies were printed in the last (October 1976) press run.

"The grass is rich and matted, you cannot see the soil. It holds the rain and the mist, and they seep into the ground, feeding the streams in every kloof. It is well-tended, and not t-o many cattle feed upon it; not too many fires burn it, laying bare the soil. Stand unshod upon it, for the ground is holy, being even as it came from the Creator. Keep it, guard it, care for it, for it keeps men, guards men, cares for men. Destroy it and man is destroyed."

Alan Paton, 1948
Cry the Beloved Country

Mountaineering Ramblings

I was driving home from one of the few remaining October Thursday nights at Storm Mountain with a warmer-than-usual feeling. I had finished the Epic Wall in near darkness and fried hamburgers for the fifteen or so hardcore souls who gathered around the small wood fire engaging in the usual enthusiastic and varied conversation. Renny Jackson was telling some of his experiences as a Climbing Ranger and there was a discussion of our upcoming Leigh Lake Trip. It was cold for the first time but we managed to finish the beer. This triggered the fairly common exodus to the Canyon Inn for dancing and more good fellowship.

Another summer season was nearly gone and I looked back briefly on some of our fine climbs: Moran, Temple, Wolf's Head, Mitchell, Block Tower, Gannett and Sundial. I also thought about some of the climbs that I and others had done on our own. I realized again what a central part these and other WMC-related activities play in my life. As I viewed the lights of the valley from Wasatch Blvd., I felt a strong reconfirmation of my love for this area and these people. I was lifted as my mind repeated almost unconsciously words of another time that seem to run through my Utah experience:

Princess of Peace
Pulling me upward
Drawing my mind, my tears,
 my body to you
Great angel, not fallen
 touch your wings to me
Raise me again to the Heights.....

My mind has moved to the upcoming winter season. I hope we will have more of our qualified people out for truly superior adventures where we blend into the heights on their more severe terms. We will start out on Mt. Olympus on November 20.

* * * * *

NOTICE: A Coleman lantern and several gold lines are missing. This equipment is critical to our program and should be returned to me as soon as possible.

by John Gottman

TIMBERLINE SPORTS, INC.

... is hosting the AMERICAN AVALANCE INSTITUTE

... An all-inclusive ski tourers avalanche course

... Taught by Rod Newcomb and Peter Lev

... November 18-21 (snow permitting)

... Call 466-2101 for details

SUNDIAL

September 26

by Martin Knaphus

After an invigorating hike up the Lake Blanche trail, eight of us completed the annual Fall ascent of Sundial. What started out as a clear morning turned into a cold, overcast afternoon with rain threatening intermittently.

John Gottman should receive an award for the most precarious belay perch. Using two questionable anchor nuts, a rusty piton, a loose foothold, and three fingers on an overhead ledge, he belayed Penny on the first pitch.

To avoid the usual traffic jam on the last pitch, four of us took the "Mason Variation"--trusting loose foot- and handholds and making a short but breathtaking traverse.

Danny Horton and Rob Synder, hardcore mountaineers, hiked to the summit. The rest of us were satisfied to eat our smashed sandwiches and unrecognizable Hostess Cupcakes at the top of the climb.

On the way down the trail, the bright Autumn colors were appreciated by all.

Leader: John Gottman. Participants: Bonnie Baty, Danny Horton, Martin Knaphus, John Mason, Dave Oliver, Penny Russell, and Rob Synder.



"Next time I wish you'd check these family-rate plans more carefully."



BROADS FORK

September 26

by Janelle Rouze

Nature was showing off as nine hikers ventured into Broads Fork. Proud as a peacock of her glorious colors, Nature displayed gold, scarlet, yellow, orange, green, and pink. Golden leaves danced and sparkled in the cool breeze and warm sunshine. Our leader set a pleasant, easy pace so that we might view the pageantry.

Our destination was a meadow at the base of Twin Peaks. In the spring the meadow is a swamp. But now the swamp had become a small stream meandering through tall, thick grass. We hiked around the meadow and bushwhacked through thickets of pine, aspen, and heavy oak brush. Adventurous Peter Hansen scaled Twin Peaks (and later slid down the smooth rock).

After eating lunch and gazing at Dromedary and Twin Peaks, we returned to the cars. Before departing, all participants thanked Joyce Sohler for an excellent hike.

Leader: Joyce Sohler. Hikers: Reg Swartz, Jean Kordig, Goodwin Schaefer, Ann Cheves, Peter Hansen, Priscilla Horton, John Burkart, Janelle Rouze.



Photograph by Bob Everson

FAMILY RIVER TRIP

August 21

by Sarah Yates

Bright and early on Saturday, after a night spent in cars, campers or on the ground, the families gathered at East Table Creek Campground on the Snake River. Mother Mary, appropriately clad in her famous "Den Mother" shirt, herded the entire crew to Elbow Campground and put everyone to work inflating boats or staking out campgrounds for the night.

A tame section of the river offered time for beginner instruction by boat captains Haan, Yates, Wood and Manley. Manley, who captained the "Women's Lib" boat, led the trip. Ups 'n downs and splashes were greeted with screams by some, but the river and weather were both mild up to lunchtime. Lunch was served just upriver from the famed Lunch Counter Rapid where most of the boaters bush-whacked along the hillside to scout the rapids and observed a canoe overturn.

None of the rafts suffered mishaps going through the rapids. It wasn't long before the takeout point was reached and the kids were toting the gear uphill and the adults were carrying rafts to the parking lot. Everybody piled on, deflated and loaded the rafts and hurried "home" for the evening's festivities.

Steaks and Japanese vegetables were enjoyed by all. Soon all of the kids and many of the adults departed for swimming at Astoria. A few remained behind to keep the home fires burning. Guitar music and singing, roasted marshmallows and talk closed the evening as families drifted off to their assorted beds.

A yummy Sunday breakfast put everyone in the right mood for quick camp-breaking, raft-inflating, and car-shuttling so that we were on the river earlier than the previous day. The river was higher and choppier. Lunch Counter Rapid was more exciting--at least more of us got sloshed about. We tied up just below the rapids to eat lunch and to watch and cheer the kayaks, rafts, canoes, and free-floaters through the rapids. The latter inspired some of our crew to don life jackets and bounce through the rapids sans rafts with Mother Mary tossing a life ring to each floater as they emerged whooping with delight (we think) at the bounce of the waves.

Cooperation was again high as the kids hurried the gear uphill, adults carried rafts up the road, and all bounced on the rafts in the deflating process. The boats were loaded and gear divided up by family. Everyone said goodbyes and started for home after a fine family adventure. If summer has to end, this is the way to end it!

Leader: Mother Mary Manley. Crew: Joy and Cindy Ray; Bill and Sarah Yates and children; Steve Barnard; Pete and Shirley Lakomski and children; Margaret Strickland and Mike; the Haan family; and the Wood family and boyfriend.



A P P L I C A T I O N F O R M E M B E R S H I P

WASATCH MOUNTAIN CLUB
3155 Highland Drive
Salt Lake City, Utah 84106
363-7150

NAME (Print) _____ Telephone _____

Name of spouse (only if spouse wants membership also) _____

Address _____ ZIP _____

Occupation (Optional) _____

I hereby apply for membership in the Wasatch Mountain Club and enclose \$ _____ as my annual membership dues for the year _____, \$ _____ of which is for a subscription to the Rambler for the year and \$4.00 entrance fee. (If joining during January thru August, dues are \$6.00 of which \$5.00 are for a Rambler subscription -- Spouse dues (non-subscribing) are \$3.00 additional. If joining during September thru December, dues are \$3.00 of which \$2.50 are for a Rambler subscription -- Spouse dues (non-subscribing) are \$1.50 additional. Add \$4.00 entrance fee to each application, single or couple. Subscriptions are not deductible from dues. I (do) (do not) desire to receive the Rambler.

I have attended two Club activities in the past 12 months as required for membership such as hikes, ski tours, camping trips, rock-hound trips or work parties and have been recommended by two trip leaders who are Club members. Events such as lodge parties, winter socials, lectures, meetings, etc. are not activities qualifying for membership. I agree to abide by all the rules and regulations of the Club as specified in the Constitution and Bylaws as determined by the Board of Directors.

I am specifically interested in the items checked below:

Hiking _____ Ski Touring _____ Boating _____ Mountaineering _____ Cycling _____

Conservation _____ Writing and Editing _____ Organizing social activities _____

Lodge Work _____ Photography _____ Other _____

CLUB ACTIVITIES ATTENDED:

| | | |
|----------|------------|---|
| 1. _____ | Date _____ | Signature of recommending Trip Leader _____ |
| 2. _____ | Date _____ | Trip Leader _____ |

(Note: The signature of a Director may be substituted for one Trip Leader.)

Signature of Applicant

WMC Lodge Regulations

During the winter, please park your car in front of Mt. Majestic Manor so that the rest of the parking area is free for snow removal. Do not park in front of Mt. Majestic Motel.

Inside the lodge, children should not be permitted to run up and down the stairs, jump on the furniture, bang windows, climb out of the windows, play on the fire escapes, or climb on the outside of the building.

The noise level should be kept down. Please have children in bed or playing quietly at a reasonable time at night. If parents cannot or will not control their children, they will be asked to leave.

No dogs are permitted in the lodge.

Burn all burnable trash, plates, cups, paper towels, or food. Please mash cans if possible. All garbage must be hauled out.

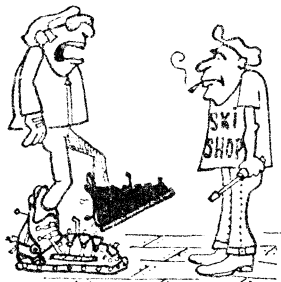
The holding tanks for the waste water and sewage are very limited. Please do not let any but the very necessary water run down the drain. Please dump dish water, personal washing water, etc., outside. It is suggested that a bucket be kept under the faucet in order to catch water drips, etc. Dump after using.

Please wash your cooking dishes and utensils before leaving on hikes, etc., as they can be in the way of others. If possible, do not let them sit.

Please remember that the work party is done by just a few members. So let's try to keep the upkeep to a minimum and not have it accumulate for the work party.

Please do not let children abuse ping-pong balls or damage rackets.

All lodge users are responsible for cleaning the lodge before leaving.



"Check the air pressure, balance em,
align the toes, grease the joints,
tighten lugs and put in a quart of foam."

WASATCH MOUNTAIN CLUB, INC.

3155 Highland Drive/Salt Lake City Utah 84106

Vol. 53, Issue 11 (1976)

SECOND CLASS
POSTAGE PAID
AT SALT LAKE
CITY, UTAH.

BOARD OF DIRECTORS

| | | |
|---------------------|----------------|----------------------|
| JUDY (DAVIS) THOMAS | PRESIDENT | 272-6435 |
| DIANA SCHOENBERG | SECRETARY | 466-6531 |
| MEL DAVIS | TREASURER | 278-3174 |
| BOB WEATHERBEE | BOATING | 272-5510 |
| BILL VIAVANT | CONSERVATION | 532-4289 |
| MARY MANLEY | ENTERTAINMENT | 277-6307 532-6505 |
| MIKE HENDRICKSON | HIKING | 278-9856 |
| DAN THOMAS | KAYAKING | 272-6435 |
| RANDY TAYLOR | LODGE | 272-4624 |
| JUDY WEATHERBEE | MEMBERSHIP | 272-5510 |
| JOHN GOTTMAN | MOUNTAINEERING | 359-4693 |
| JOYCE SOHLER | PUBLICATIONS | 272-2624 |
| MICHAEL TRESHOW | | 467-1022 |
| ANDY SCHOENBERG | SKI TOURING | 466-6531 |