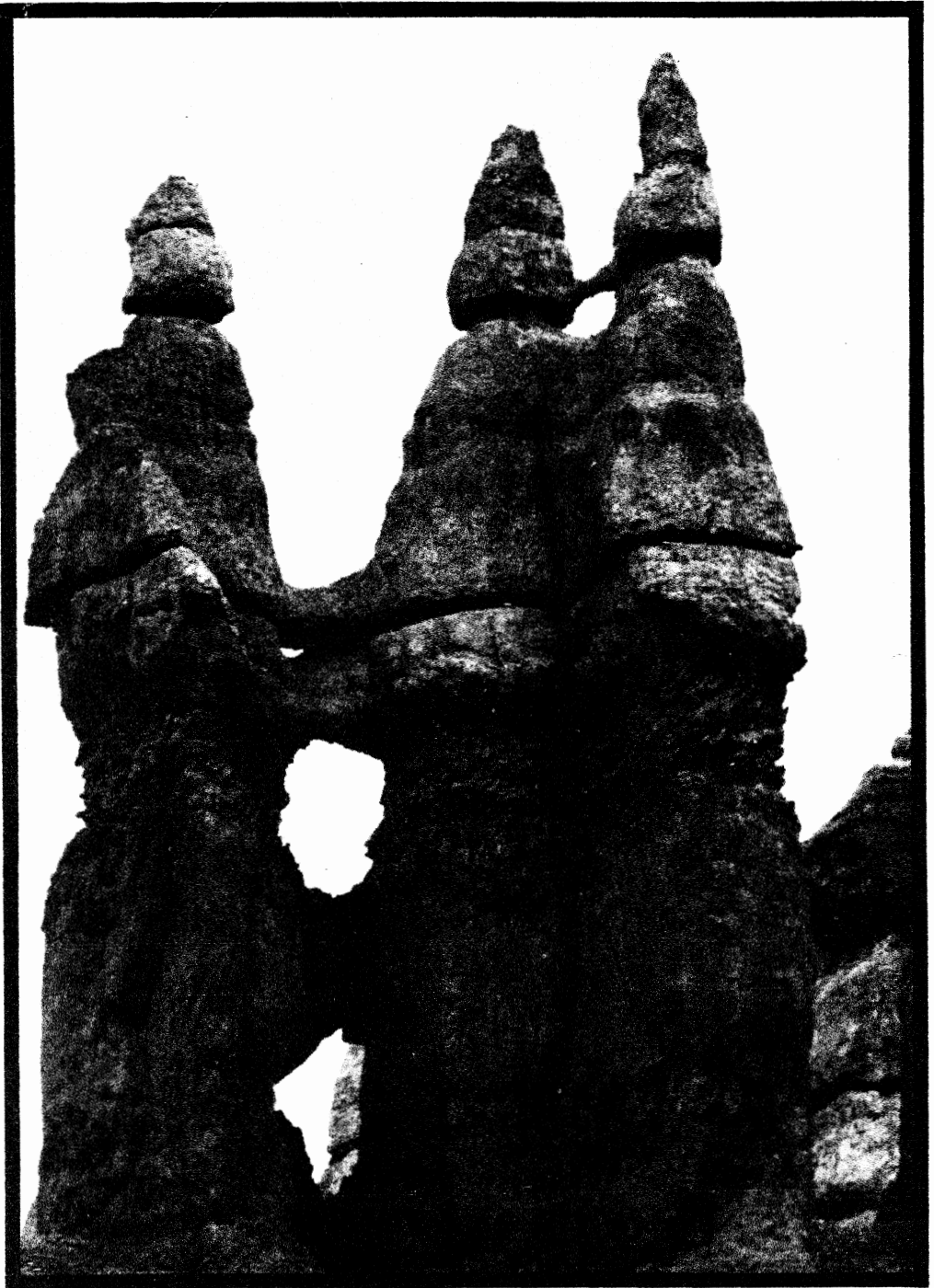


# *The Rambler*

APRIL 1977



Official Publication of THE WASATCH MOUNTAIN CLUB

127

# News and Notices

COVER: Photograph of Bryce Canyon by  
Trudy Healy

## Rambler Deadline

...for May is April 15, Friday. Please type (double-space) your articles or schedules, indicate your name and telephone number on your articles, slides, prints, etc., and place your slides or prints in protective folders. Mail to (or drop by):

WASATCH MOUNTAIN CLUB  
3155 Highland Dr.  
Salt Lake City, Utah 84106  
ATTENTION: RAMBLER EDITOR

## Thanks....

...to Diz Mays and Lois Craig for help in editing this month's Rambler.  
...to Penny Russell and Leona Conn for typing material and to Leona Conn for general handyperson.

---

THE RAMBLER is published monthly by the Wasatch Mountain Club, Inc., 3155 Highland Drive, Salt Lake City, Utah, 84106, telephone 363-7150. Subscription rates of \$5.00 a year are paid for by membership dues only. Prospective members may obtain 2 free RAMBLERS (consecutive months) by contacting Club headquarters or the Membership Director. Direct all correspondence regarding changes of address, mailing, etc., to the Membership Director at the above address. Second Class Postage is paid at Salt Lake City, Utah.

---

...to Larry Hoskins and Steve Phillips for contributing their time and talents in laying-out and pasting-up the Rambler art work.  
...to Dale Green for mailing the current issue.

HITCHED: Phyllis Southerland and Walter Haas on April 2, 1977.

The Wasatch Mountain Club is governed by a Board of Directors - 13 representatives elected by the membership. Through the courtesy of Timberline Sports, our mail is sent to their address, 3155 Highland Drive, for collection only. The Club's telephone is located at O'Dell's Shoe Repair Shop, 425 South 8th West. This phone is maintained as an answering service only by Life Members 'Pete' (O'Dell) Peterson and wife 'Pinky'. They take time out from their work to answer the phone and relay incoming messages to the proper Director. The Petersons do not hold any office, or attend Board meetings or are they informed by the Board of official actions. If a trip leader cannot be contacted or is not specified, call the Director of that department for information. The Board strongly desires to hear comments, suggestions, inquiries, and criticisms concerning the operation of your Club. Please feel free to phone any Director or write to the President. Names will be withheld upon request, but anonymous letters will be disregarded.

Mountain Club business is conducted only on the first and third Wednesdays of each month. At that time, and only at that time, is the mail opened, new membership applications voted on, dues payments recorded, address changes made, and all other business requiring board action conducted. All board members cannot attend all board meetings and although an effort is made to fill in during a member's absence, some business is held for action until the next meeting.

# Club Activities ... April, 1977

HIKING INFORMATION: Members participating in easy or intermediate hiking (rating below 7.0) are generally not required to register with the leader. Unless otherwise stated, advanced hikes (rating above 7.0) do require registration. Adequate equipment is a must for advanced hiking. You can participate in these events only if you have demonstrated your ability on other hiking activities and if you have adequate and well broken-in boots with good Vibram-type

soles and suitable protective clothing. Special equipment, such as an ice axe, may be specified and you are expected to be able to handle such equipment. Remember that these restrictions are set for your safety as well as that of your fellow members.

Children are permitted on hikes with a rating of less than 3.0; however, permission of the leader is required on hikes with a rating between 3.0 and 5.0.



APRIL 2  
Saturday

PARK CITY TO MIDWAY. Beginner/Intermediate nordic ski tour. Meet at 8:00 a.m. at the east side of K-Mart parking lot at Parley's Way. Leader: Jim Byrne, 582-5631.

APRIL 2  
Saturday

SNOWSHOE TRIP FROM TIMBERLINE to wherever conditions look best. To reach the meeting place, take I-80 east and exit at Parley's Summit. Drive down the hill (south) and follow the frontage road east for ½ mile to the "Timberline" sign on the right. Meet at 9:00 a.m. Leader: Ruth Holland, 1-649-8255.

APRIL 3  
Sunday

ALEXANDER BASIN. Advanced ski tour for the most capable nordic or alpine skiers only. The upper bowl is extremely steep. The route goes up Mill D to Dog Lake and follows the ridge to Alexander Basin. If conditions permit, Gobblers Knob will be on the agenda also. Call the leader, Dave Hanscom, 487-6065, for details.

APRIL 3  
Sunday  
6:00 p.m.

WINTER SOCIAL -- Grace and John Burton will be hosting the fun at 2407 South 2500 East. Please call 467-5646 for more information.

APRIL 7  
Thursday

EVENING CLIMBING AT PETE'S ROCK. Meet about 5:30-6:00 p.m., at Pete's Rock, approximately 5500 South Wasatch Blvd.

APRIL 8-10  
Friday-Sunday

ESCALANTE RIVER TO COYOTE GULCH BACKPACK. Telephone the leader, Bill Yates, 1-723-3853, for details before April 7.

APRIL 9  
Saturday

SNAKE CREEK PASS. Beginner/intermediate nordic or snowshoe tour. The lift will not be used. If conditions are right, a dash for the summit of Clayton Peak (alias Majestic) is contemplated. Meet at the mouth of Big Cottonwood Canyon at 8:00 a.m. Leader: Oscar Robison, 943-8500.

- APRIL 9  
Saturday  
FOOTHILL I. An easy stroll in the Ensign Peak area. Meet at the mouth of City Creek Canyon (lower gate) at 9:00 a.m. Leader: Carl Bauer, 355-6036.
- APRIL 10  
Sunday  
DANIELS CANYON (Uintas). Intermediate nordic tour. This trip depends upon snow conditions, so call Doti Marden, the leader, at 1-649-9628.
- APRIL 10  
Sunday  
BIG BEACON. El. 7,143. Rating, 3.0. Meet at the north-east end of Hogle Zoo parking lot at 9:00 a.m. Leader: Oscar Robison, 943-8500.
- APRIL 14  
Thursday  
EVENING CLIMBING AT PETE'S ROCK. See April 7 for directions.
- APRIL 16  
Saturday  
PROVO RIVER KAYAK TRIP. Everyone who has kayaked the Provo in the past and who wants to in the future should come and see where the proposed new highway is going to be. We will also run the easy part below the dam for the "ice breaker" trip of the year (providing there is water). Meet just below Deer Creek Dam at 12:00 noon. Call J. Dewell (295-2754) for details. Anyone interested in promoting the season's opening Dutch oven pot-luck supper if weather permits?
- APRIL 16  
Saturday  
MILL D NORTH TO MILLCREEK. Intermediate nordic tour. Meet at 8:00 a.m. at The Movie (Olympus Hills Plaza). Leader: Danny Horton, 328-9486.
- APRIL 16  
Saturday  
FOOTHILL II. Another easy leg stretcher. Meet at the 11th Avenue gate of Shriner's Hospital (11th Avenue and Virginia Street) at 9:00 a.m. Leader: Carl Bauer, 355-6036.
- APRIL 17  
Sunday  
THE FAMOUS ANNUAL GOURMET TOUR! This is the only way to end the touring season. The food has been getting better and more exotic every year. Just bring some of your best gourmet fare and our hosts (??) will once again lead us off in the sun to share good food and drink with friends. Skiers and snowshoers are welcome. Meet at the mouth of Big Cottonwood Canyon at 10:00 a.m. Call Lyman Lewis at 1-649-9632 for further details.
- APRIL 17  
Sunday  
GRANDEUR PEAK. El. 8,240. Rating, 4.5. A popular hike with a fine view of the valley. Call the leader, Fran Flowers, at 581-9083 for details.
- APRIL 17  
Sunday  
6:00 p.m.  
WINTER SOCIAL. John Gottman will host the final social of the season. It ought to be a good one. John lives at 1074 East 6th South. His telephone number is 359-4693.
- APRIL 21  
Thursday  
EVENING CLIMBING AT PETE'S ROCK. See April 7 for directions.

- APRIL 22-24  
Friday-Sunday      SAN JUAN RIVER TRIP. This will be a three-day beginner trip from Mexican Hat to Clayhills. The San Juan is a beautiful Southern Utah river and does have some small rapids. Please register early since this trip may be moved up due to water levels. To reserve your spot, send a \$20.00 deposit, payable to the WMC, to Mary Manley, 3681 South 23rd East, SLC., 84109. Any questions, call 277-6307.
- APRIL 23-24  
Saturday-Sunday      LODGE open for WMC members. Call Randy Taylor at 272-4624 for further details if you are interested.
- APRIL 23  
Saturday      STANSBURY ISLAND. El. 6,645. Rating, 4.0. The peak offers a splendid view of the Great Salt Lake and the Salt Lake valley. Meet in the parking lot on the south-west corner of Simpson Avenue and 13th East Street at 8:00 a.m. Leader: John Riley, 485-2567.
- APRIL 23  
Saturday      WEBER RIVER KAYAK TRIP. Providing there is enough water, we will make one or two runs on this easy stretch of river. Meet at the west Henefer exit at 12:00 noon. Call Bill Sill (278-1193) for details.
- APRIL 24  
Sunday      FOOTHILL III. A trek up the ridge to Pencil Point. Meet at the K-Mart parking lot by the Regency Theatre at 9:00 a.m. Leader: Carl Bauer, 355-6036.
- APRIL 24  
Sunday      SOUTH RIDGE OF SUPERIOR CLIMB. This will involve substantial exposed scrambling, some roped pitches, snow slogging, and probably a late return. Ice axes will be required. The number of climbers will be limited. Call John Mason, the Mountaineering Director, at 272-7558 for information and registration.
- APRIL 28  
Thursday      EVENING CLIMBING AT PETE'S ROCK. See April 7 for directions.
- APRIL 30 -May 1  
Saturday-Sunday      DEWEY BRIDGE TO MOAB KAYAK TRIP. Beginner trip on Class II water. Wetsuits will be in order for low water temperatures. We will camp at Rock Garden Rapid Friday night and run the trip from there. This is a primitive camp (no water) so come prepared. Go east from Moab on Highway 128 (just north of Moab) for approximately 16 miles and then turn left just past the small bridge. Call Jim Mason (355-3810) for details.
- APRIL 30  
Saturday      ROCKHOUND TRIP. Elmer is planning a one-day trip to collect wonderstone in the Lookout Pass and Vernon areas. Bring a rock hammer and collecting bag. Meet at the Prudential Plaza parking lot (33rd South and State Street) at 8:00 a.m. Leader: Elmer Boyd, 299-7814.
- APRIL 30  
Saturday      GRANDEUR PEAK MOONLIGHT HIKE. Call the leader, Andy Schoenberg, at 466-6531, for details.

- APRIL 30  
Saturday  
BIG MOUNTAIN. El. 8,472. Rating, 3.0. This is the peak just east of Hogle Zoo. Meet at the north-east end of the Hogle Zoo parking lot at 9:00 a.m. Leader: Clint Lewis, 295-8645.
- MAY 1  
Sunday  
MT. OLYMPUS. El. 9,026. Rating, 8.0. Put on the moleskin and join us for the first big one of the year. Meet at Pete's Rock at 8:30 a.m. Leader: Leroy Kuehl, 582-6890.
- MAY 5  
Thursday  
EVENING CLIMBING AT STORM MOUNTAIN. See this month's Mountaineering Ramblings for details and directions.
- MAY 7-8  
Saturday-Sunday  
DEWEY BRIDGE TO MOAB RIVER TRIP. This is our most popular beginner trip. The scenery is superb. Send your \$20.00 deposit to Wayne Slagle, 2500 Cinnabar Lane, SLC., 84121. Call 943-1695 (home) or 328-8066 (work) if you need more information.
- MAY 7-8  
Saturday-Sunday  
DOLORES RIVER KAYAK TOUR (AND/OR GRAY CANYON). Intermediate tour through beautiful canyons. Which portions of the river to be run (if any!) will depend upon paddler interest and especially upon water levels this year. Therefore, the trip may extend into the following week or be postponed to a later date. Please contact Marty MacKnight (355-3810) in advance if interested.
- MAY 7-8  
Saturday-Sunday  
GRAY CANYON ON THE GREEN KAYAK TRIP. Spring kayak practice on a great stretch of river. Primitive camp. Suitable for beginners. Call Jim Mason (355-3810) for details.
- MAY 7  
Saturday  
MT. AIRE VIA ELBOW FORK. El. 8,620. Rating, 3.0. An excellent spring hike leading to the summit which lies between Millcreek Canyon and Parleys Canyon. Meet at The Movie (Olympus Hills Plaza) at 9:00 a.m. Leader: George Healy, 583-3411.
- MAY 8  
Sunday  
STORM MOUNTAIN. El. 9,524. Rating, 9.0. The route will be up infamous Ferguson Canyon. Meet at the mouth of Big Cottonwood Canyon at 8:00 a.m. Leader: Elmer Boyd, 299-7814.
- MAY 12  
Thursday  
EVENING CLIMBING AT STORM MOUNTAIN. See this month's Mountaineering Ramblings for details and directions.
- MAY 14-15  
Saturday-Sunday  
DOLORES RIVER TRIP. You can expect more interesting whitewater than our standard beginner trips. So if you're a beginner, please check with the trip leader concerning your qualifications. Send a \$20.00 deposit to Dave Hart, 8311 Top of the World Drive, SLC., 84111. Is there anyone who would like to help with the shuttle? Call 943-0318.
- MAY 14-15  
Saturday-Sunday  
GRAY CANYON KAYAK TRIP. Call Jim Mason (355-3810) for details.

- MAY 14-15  
Saturday-Sunday      LODGE open for WMC members. Call Randy Taylor at 272-4624 for further details if you are interested.
- MAY 14  
Saturday      NORTH PEAK OF THUNDER MOUNTAIN. E1. 11,254. Rating, 11.0. We will follow the usual route up Coalpit Gulch and descend via Bells Canyon. Bring an ice axe. Register with the leader, Sam Allan, at 942-3149.
- MAY 14  
Saturday      MULE HOLLOW WALL EXPERIENCE CLIMB. This 500-foot wall involves F4, F5, and F6 climbing with several parallel routes. It is strongly recommended that climbing course graduates attend to gain climbing experience. Call the Mountaineering Director, John Mason, at 272-7558 (home) or 582-5847 (work) for information and registration.
- MAY 19  
Thursday      EVENING CLIMBING AT STORM MOUNTAIN. See this month's Mountaineering Ramblings for details and directions.
- MAY 21-22  
Saturday-Sunday      GRAY CANYON KAYAK TRIP. Another weekend on the Green if there is any water or interest. Contact Jim Mason (355-3810) for details.
- MAY 22  
Sunday      TANNERS GULCH SNOW CLIMB AND TRIPLE TRAVERSE. Details will be included in the May Rambler.
- MAY 26  
      EVENING CLIMBING AT STORM MOUNTAIN. See this month's Mountaineering Ramblings for details and directions.
- MAY 27-30  
Friday-Monday      DESOLATION KAYAK TOUR. A four-day tour through Desolation Canyon on the Green River. Suitable for a few beginners. Please contact Jim Mason (355-3810) several weeks in advance to determine interest for this tour.
- MAY 27-30  
Friday-Monday      DESOLATION RIVER TRIP. Plan on a four-day intermediate trip through some of the most inaccessible country in Utah with interesting rapids as a bonus. The trip leader is Chuck Denton, but send your deposit of \$20.00 to Mary Manley, 3681 South 23rd East, Salt Lake City, 84109. Telephone Mary at 277-6307 or Chuck at 322-5513 (Ext. 33402) from 8:00 a.m. to 4:00 p.m.
- MAY 27-31  
Friday-Tuesday      MOUNTAINEERING HIGH CAMP -- PALISADES AREA OF THE SIERRAS. Details will be included in the May Rambler.
- JUNE 9-12  
Thursday-Sunday      YAMPA RIVER TRIP. This is the one for which we have been waiting. Only qualified boaters will be permitted to go on this trip. You must have been on two previous WMC raft trips and have demonstrated your ability to handle large rapids. Send your deposit of \$20.00, check payable to WMC, to Dave Hart, 8311 Top of the World Drive, Salt Lake City, Utah, 84121. For further details, call him at 943-0318.

# KAYAKING - 1977

by Jim Mason

I would like to thank Dan Thomas for his outstanding job. As the kayaking director for the last two years, he put a lot of time and effort into the kayaking program. I hope that I will be able to carry on with the help of my friends.

The problems that have arisen thus far will not be, I hope, indicative of the entire year. First, the low snowfall of the past winter has already made it necessary to change the usual schedule. Such tours as the San Juan, Owyhee, and the Bruneau have been dropped. The latter would have been a new river for us. Most of the other tours will require a "wait and see" attitude.

Second, one of our usual trips, the Yampa, has been cancelled simply because we were unlucky in the drawing for a permit. This is an unfortunate situation wherein private river-runners are unable to get a permit due to the lopsided allocation system in favor of the commercial outfitters. This problem has been stated in previous Ramblers and I plan to keep the WMC paddlers abreast on this problem in the future.

Last, but not least, we have not been able to reserve a pool for our usual spring pool sessions. Cottonwood High School has expanded their swimming program, thus eliminating time for us. A check on other facilities has not been fruitful as yet. Other possibilities may arise, so if you are interested in pool sessions, please let me know.

As in the past, a scheduled kayak "tour" refers to a multi-day trip on which we travel self-contained. This kind of travel requires a certain degree of confidence in the Eskimo roll and in whitewater ability. A kayak "trip" is running a stretch of river and then returning to our cars to camp at night. Kayakers new to our program must go on some of the trips in the beginning of the year so that we can assess their ability to handle more advanced trips later on.

Let's go boatin' ! (Hopefully?)



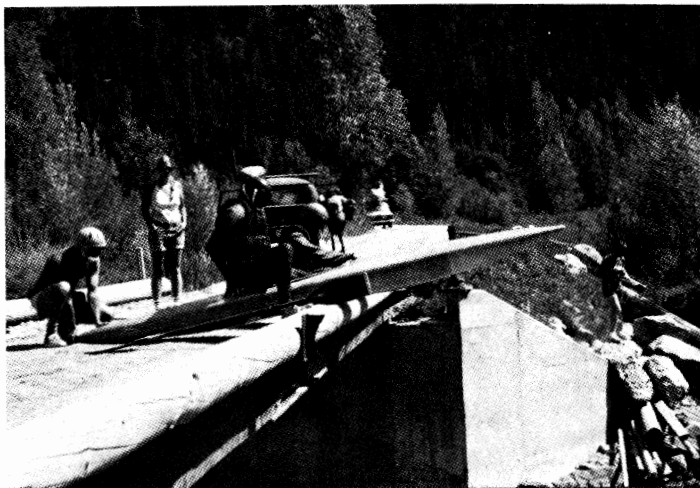
## DEADLINE FOR DUES -

## APRIL 30, 1977

## no dues---no may rambler !!

**Keep in Tune with the WMC Pay Your Dues Today !**





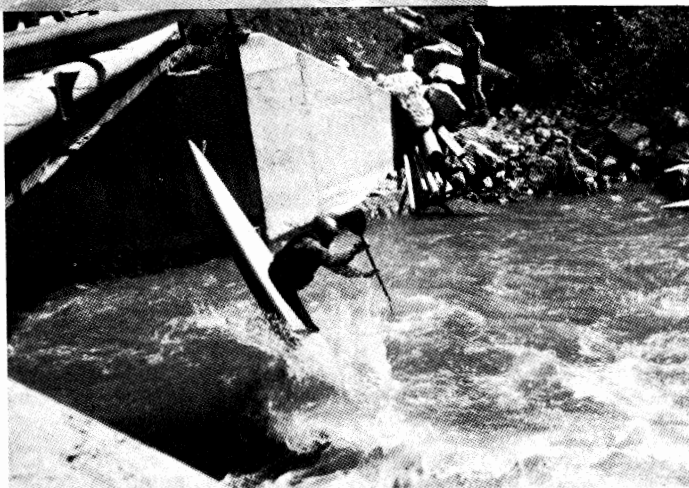
Photographic Accolades:  
Fast shooting by Mary Manley  
Gros Ventre River, Wyoming



FOR ADVANCED KAYAKERS ONLY !!!

Or

"SCHUSSING THE RIVER"



## LOBBYING FOR LONE PEAK



Hard at work in Washington, D.C. Although Congressman Dan Marriott opposes the Lone Peak Wilderness designation at this time, he is willing to reconsider if there is vast public support for the above designation.

by Alexis Kelner

What's tougher than a forced nighttime ski descent down Bells Canyon under marginal snow conditions with only one Nordic type ski?

Give up? It's trying to convince Utah's congressional delegation in Washington, D. C., to support (or to withdraw their opposition to) the creation of the Lone Peak Wilderness Area.

Many club members are aware by now that an "Endangered American Wilderness Act of 1977" is currently being considered by the Congress. One purpose of this bill, drafted by Arizona's Morris Udall, is to provide immediate protection to a number of "nationally-significant, and popular roadless areas" throughout the western United States. Our Lone Peak area is one such region.

On Feb. 28 and 29 and on Mar. 1, a public Hearing was held in Washington, D. C., before the House Subcommittee of Indian Affairs and Public Lands. I attended the Hearing and under the sponsorship of the Lone Peak Wilderness Committee, the W.M.C. and Save Our Canyons group, presented a statement on their behalf. I also spent a week attempting to persuade many congressmen and their staffs to support or to co-sponsor this legislation. I'd like to share some of my impressions of the Washington scene with fellow W.M.C. members.

The doors of our congressional delegation were always open and I was made very welcome. Gunn McKay's office became a second home---not a condominium, but a home! Although I did not talk personally to Congressman McKay, I had several meaningful

discussions with Herm Olson, his Legislative Aide. He indicated that McKay was "personally comfortable with Scenic Area designation for Lone Peak but was willing to listen to well reasoned arguments" on behalf of a Wilderness designation.

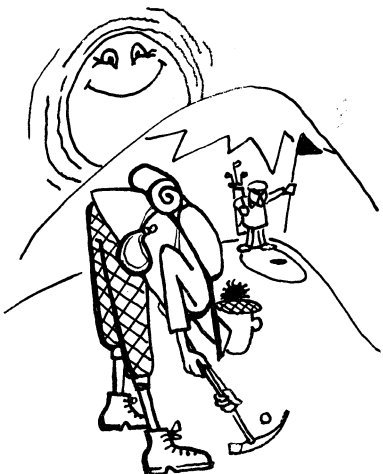
I spent several hours talking to both Dan Marriott and Jessalee Barlow, his Legislative Aide. After presenting numerous arguments to Ms. Barlow, I was told that Mr. Marriott was against a Wilderness classification for Lone Peak but that "he believes in wilderness--and would like to see some in Utah," and that "his stand against Lone Peak is not encased in marble."

The visit with Senator Hatch was as brief as a fleeting handshake and a "Gee, I'm glad to see you---sorry---but I have a committee meeting in five minutes." A lengthy discussion with Hatch's Legislative Aide was similarly fruitful---a friendly handshake at the end of the session.

Talks with members of the Public Lands Subcommittee and with members of the full Interior Committee were more promising. During the week I visited some twenty congressmen and their staffs; most seemed very sympathetic to the wilderness cause. One Eastern congressman (a Republican) was especially candid: "I'm glad to see such clean-cut people as you talk about the environment. Usually we get long-haired hippies wearing stringy buckskins. I'll bet you people don't circulate a 'Dirty Dozen' list."

It was fascinating to observe other wilderness advocates in action. Since there are about 25 areas considered in this bill, some two dozen persons testified at the hearings on behalf of their individual regions. All were energetic and eloquent. They were well prepared with facts, persuasive arguments and supporting materials. Industry spokesmen representing Northwest and California timber, forest products, mining interests and Chambers of Commerce were neither as professional nor well prepared.

There are other impressions I dare not go into. The best and lasting one is that the system works. Wilderness, conservation and preservation of the environment are being given very strong consideration in many regions--all outside of Utah.



### WMC GOLFERS ?

If you are interested in having fun in an 18 hole, once a year, golf match, handicap based on the 13 holes played, for the championship of the WMC, call Larry Hoskins 272-1754 or office 250-5911 ext. 2645

If enough are interested we'll set up a tournament.



## **GRAND GULCH REVISITED: A PHOTO ESSAY**

November 25-28 by Mary Manley

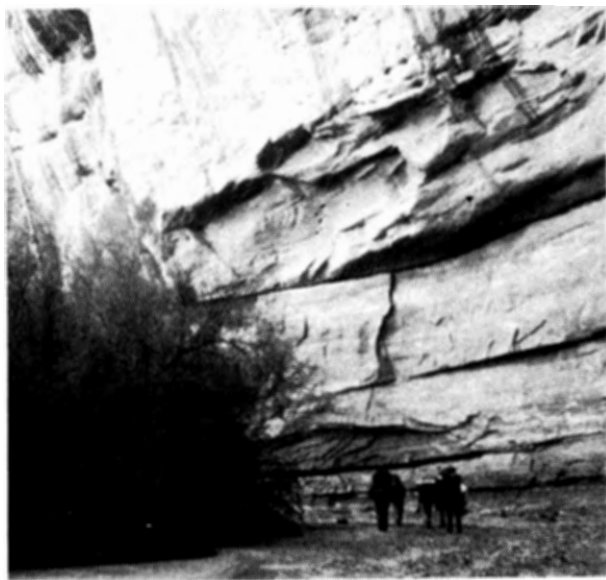
Mike stopped to take a picture of El Capitan in Monument Valley on his way home to Phoenix (upper left).

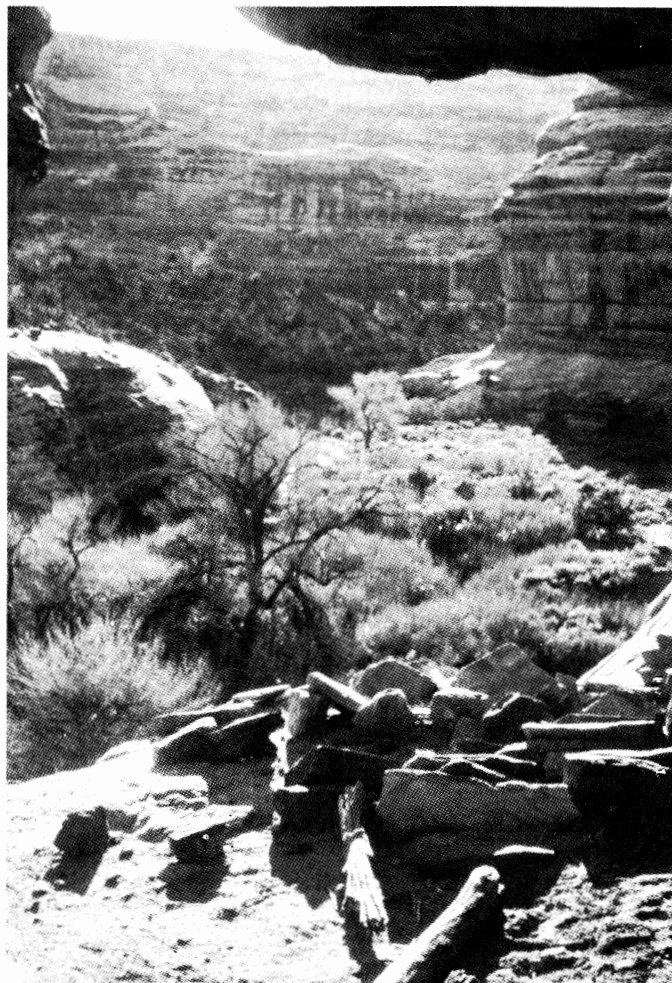
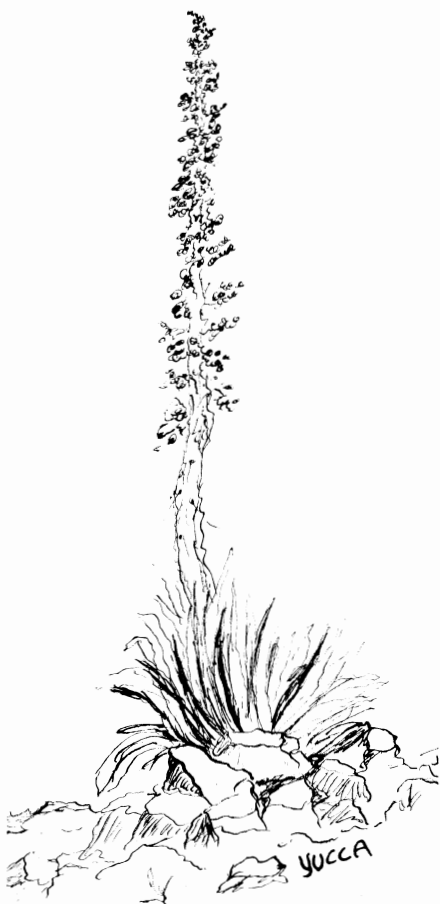
The longest day--a 14-mile backpack (lower left).

Ruth Holland at the "Fountain of Youth" (below).

Looking out of Indian ruins (upper right).

Lynne Larsen and Christian Hinrichs are huddled around the fire on the last night out. The temperature was reported to be hovering around zero.





Photographs by  
Mike Taylor

# SCOTTS PASS SKI TOUR

March 13

by Rod Dixon

Salt Lake's gray winter sky eyed us as we car-pooled at the mouth of Big Cottonwood Canyon and whispered, "I may dump it on you!" When we saw the trail--ice corrugated with frosty ruts--we shouted, "We hope you do." A frosting of snow, no doubt, would soften our steps.

In answer to our query of why the snowshoers were walking, two veterans of similar terrains said, "It's easier." Others--snowshoers and skiers alike--followed suit for obvious reasons.

At Scotts Pass we sat huddled like sparrows under a protective pine singing "Yesterday's Wine" into the wind. As we rose to leave, a colorful column of about 20 Park City ski instructors, those being certified as teaching pros, curved gracefully past us like winter birds. Meanwhile, we fell and stumbled on our way.

The skiers schussed on down the hill while the snowshoers hopped about like rabbits. Fast and slow alike, we mingled at last in the warm, beery air of the Canyon Inn.

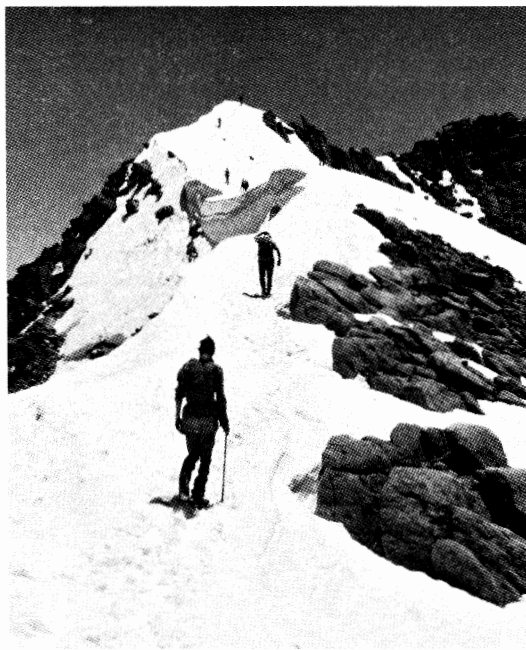
Skiers and snowshoers: John Schell, Rod Dixon, John Dawson, Roger Rollins, Dave Parry, Greg Janier, Bob McCaig, Stewart Ogden, Paul Rubenfeld, Charlie Keller, Mary Manley, Joy Ray and Elmer Boyd.

## Reminder !!!!

On Wednesday, APRIL 27, the Salt Lake Chapter of the Sierra Club and the Ute Alpine Club will present a slide show by noted photographer and mountaineer GALEN ROWELL on the "1975 American K2 Expedition." Galen was a participant on the expedition. The presentation will take place at 7:30 p.m., in the Orson Spencer Hall Auditorium at the University of Utah. General admission is \$2.00 in advance or \$2.50 at the door. A special price of \$1.50 for members of the Wasatch Mountain Club, the Ute Alpine Club and the Sierra Club has been arranged. Advance tickets may be purchased at the Ute Alpine Club office in the University Union Building or at Timberline Sports.

"You never conquer a mountain;  
You are there only because  
the mountain permits it.  
You are there for only a minute  
and then your footprints are  
blown away."

---Arlene Blum.



Lone Peak

Photograph by Trudy Healy



# Lone Peak Wilderness - What Difference Does it Make ?

by Larry Swanson

In the next few weeks, the U. S. House of Representatives and the Senate will choose 20 or so of the best qualified areas in the United States to be included in the American Endangered Wilderness Bill (HR 3454). The basic intent of this Bill and of the designation "Wilderness" is to preserve the natural values of outstanding land areas. Lone Peak has been chosen by the writers of the bill to be a candidate for this status.

Primitive areas, such as the Uintas, and Scenic areas, such as Mt. Timpanogos, are examples of other possible Forest Service designations. National or State Parks are further possibilities. The Wilderness designation, however, is being provided for those areas that are special in their natural scenic value. No roads, buildings, or other forms of commercial exploitation would be allowed. The only exception would be modifications necessary to prevent soil erosion, fires and water pollution.

The closest designation to "Wilderness" is "Scenic." In the past, the latter has been recommended by the Forest Service for many areas including Lone Peak. With the present Wasatch National Forest Service management, the results would likely be quite similar.

In the years to come, however, as personnel and pressures change, management directives could change overnight. The mandatory congressional review associated with the "Wilderness" designation would prevent loss of this area without public review. Not so with the "Scenic" status. This is a real problem, as several past incidents reveal.

### Why Should We Do Anything?

Lone Peak is important to those of us who live nearby and enjoy the area. Another reason Lone Peak is particularly important is that it typifies many other areas in the United States that lie similarly close to population centers, roads and airways, and that have similar delicate water or other natural resource management problems. These special areas, such as Lone Peak, merit and need Wilderness protection. As Lone Peak goes - so go many others!

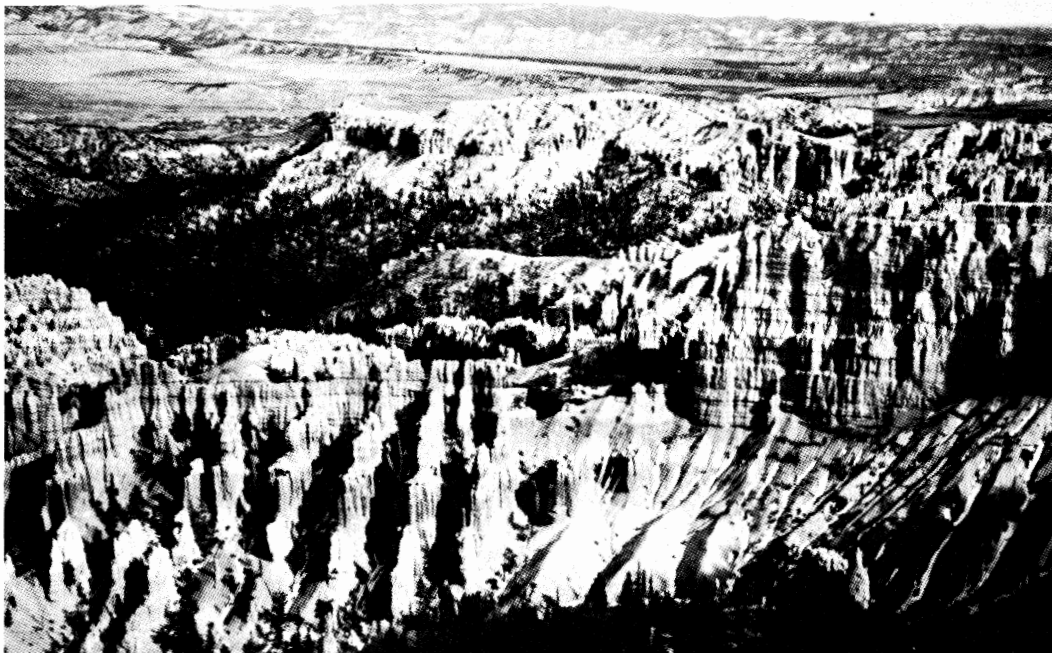
### What Should We Do?

The bill has been introduced in the House, hearings have been held, but there is still time to register support. Write the Utah Congressional Representatives now! They will reflect popular opinion if they are sure they know what the public really wants. Talk your friends (outside of the club) into looking into the issue and also writing in support. The success or failure rides on us.

Congressman Gunn McKay  
U.S. House of  
Representatives  
Washington, D. C. 20515  
(202) 225-0453

Congressman Dan Marriott  
U.S. House of  
Representatives  
Washington, D.C. 20515  
(202) 225-3011

Governor Scott Matheson  
State Capitol Building  
S. L. C., Utah 84114



## Bryce Paradise

February 19-21

Story by Sue Wells

Photographs by Penny Russell

We were well omened from the start--the weather was magnificent, clear and bright. Magnificent for spring hiking, that is--not for the snowshoe/ski tour originally planned by Trudy.

Our group met at noon on Saturday at the Visitor's Center of Bryce Canyon National Park. There, we lingered over the exhibits and chatted with the later arrivals. We pooled cars and drove over to Bryce Point. We spent the afternoon ambling along the rim of the canyon from Bryce Point to Sunset and Sunrise Points. The setting sun lit up the red walls and peaks in a translucent glow. We might have been skirting the very depths of hell (or heaven, depending upon your inclination). All our imaginative powers were needed to do full justice to the splendor below us. The leisurely pace permitted us to discover Bristle Cone pines also. (The leaves actually do look like bottle brushes.)

The Pink Cliffs Motel where we stayed really did us proud. What a pleasure it was to return, tired and hungry, to our rooms. At the restaurant we joined forces and dominated the dining room. After supper, a few hikers collapsed into bed and the others congregated in one of the rooms for a continuation of "Happy Hour" and interesting conversations.

On Sunday, after a huge breakfast at the restaurant, we headed for Sunset Point. The Navajo Trail led down into the canyon past huge trees which rivaled the peaks for sunlight. The further our descent, the deeper blue the sky above us. At the bottom of the canyon (about 500 feet below the rim), George Healy led the way up an unmarked canyon. The more energetic ones climbed to high vantage points to see into yet other canyons or to take pictures. We were now looking up from the depths seen from the rim on the previous day.



As we began the ascent of the Beekaboo Loop (leading to Bryce Point), we skirted patches of snow and ice. At Beekaboo Window, we stopped for lunch and a long siesta in the warm sun. There was lots of time to throw snowballs or let our imaginations run riot. Along the trail we encountered our first group of hikers--another contingent of Wasatchers on their own and a couple on horseback. How fortunate we were to have almost the whole canyon to ourselves (rather than the streams of tourists during spring and fall months).

Later, we followed the Queen's Garden Trail and enjoyed a much welcomed rest stop within view of Queen Victoria's statue--a ringer for the statue outside of Buckingham Palace. To complete the day, we followed the Rim Trail back to Sunset Point. (See photograph of the Queen's Garden shot from below the rim in the late afternoon sun.)

That evening during "Happy Hour," as we "relived" the day, the more zealous of our group--especially Kermit--persuaded the "late-sleepers" to get up early to watch the sunrise (6:45 a.m.) from Sunrise Point and to complete the 8-mile Fairyland Loop before leaving for home.

It was a bitterly cold, overcast morning as the hikers huddled together on Sunrise Point. A few rays spread above the horizon and then nothing. The clouds moved lower. Compared to the spectacular event we were anticipating, the actual sunrise was disappointing. A brisk walk to the trail head warmed us up though. And, the hike through Fairyland Canyon past Tower Bridge soon assuaged our disappointment. In my opinion, it was the best hike of the lot. The spectacular views were incredible--when we had time to look. At times it seemed as if we were traversing the spiny back of a prehistoric monster: we could look down on either side and feast our eyes on exotic shapes and forms of white, rust and sand-colored cliffs, towers and sentinels. And always the changing plants and trees around us.



Needless to say, we were exhausted by the time we got back to our cars. We had made the trek of eight miles in just over three and one-half hours. Even so, we realized that this, our first trip with the WMC, was incomparable and well worth repeating in the future.

Chief organizers: Trudy and George Healy.  
Participants: Kermit and Marilyn Earle, Joyce Sohler, Ruth Holland, Penny Russell, Mauritia Daily, John Schell, Jana Stevens, Chuck Ranney, Margaret and Gina Strickland, Barbara and Amy Murphy, Dennis Dougherty, Nancy Andrews, and Marge, Howard and Sue Wells.



The Coming of Spring

Photograph by Ben Stolp

# Beginner Climbing Course

by Paul Horton

The goal of the BCC is to teach beginners the basics of snow and rock climbing. This course will provide the skills and knowledge required to follow experienced climbers up technical peaks such as the Grand Teton and a background for some WMC experience climbs and mountaineering high camps. Because climbing and climbing classes can be dangerous, students are expected to pay attention and to take the instruction seriously.

WHO: WMC members only. No experience required--only an interest in learning to climb.

WHEN: Mandatory registration with Paul Horton (328-9486) by Tuesday, April 26. An evening session will be held on Wednesday, April 27, at 6:30 p.m., at John Gottman's place (1074 East 600 South). Outdoor sessions will be held on April 30 and May 7. The time and place will be announced. The evening class will last most of the evening; the day classes most of the day. Attendance at all sessions is required.

FEE: \$7.00, payable at the first meeting, covers instruction and a book. It also provides the WMC with new ropes.

EQUIPMENT: Boots or rock shoes, hard hat, nylon webbing (1 inch x 20 feet), 3 carabiners and a brake bar (or 5 carabiners) are required. For the May 7 class, an ice axe. Bring any other gear you may have, such as nuts and slings. Only the webbing is required for the evening session.

Borrow the gear if you can, buy it if you must, but have it! A few ice axes will be available for loan. The local climbing shops rent them also. If you have questions or problems concerning equipment (other than the nylon webbing), wait until after the discussion during the evening session before obtaining the rest of the gear.

SIZE: The class will be limited to 20 participants so don't wait until the last minute to register. For further information and for registration, call Paul Horton (328-9486).



## THE FIRST BLIZZARD OF

### THE YEAR TRIP :

## White Pine in Lieu of Maybird

February 26

by Emily Hall

One of the most beautiful canyons in the Wasatch, White Pine, was even more awe inspiring with howling winds and slanting snow. Growing avalanche conditions and trail finding difficulties slowed progress toward the lake with the chill factor turning us around sooner than we had planned. Downhill technique varied from straight schussing to tricky telemarks. The main problem, however, was to stick together as this trip was loaded with rugged individuals. We finally had a chance to use our spare ski tip to help someone with a broken ski get off the mountain.

Long live nordics and snowshoes! May White Pine be retained for this purpose and not be spoiled by the icy bumps of downhillers.

Participants: Charles and Emily Hall (leaders?), Lucy Hall Shaikh, Audrey Stevens, Jerry Horton, Mike Treshow, Gary Colgan, and Bob Bossar.

\* \* \*

CORRECTION: The RAFTING article in the March Rambler was submitted by Mary Manley--the Boating Director--not Dan Thomas. Sorry about that!

WANTED: Anyone care to donate an old, but functional, slide projector to the WMC for use by the Rambler staff? Or do you know of one at a ridiculously low price?

## PROBE ANYONE ?

An avalanche probe has been missing since the Desolation Lake Trip on February 27. Participants: please check your packs! Whoever finds it, call Andy Schoenberg at 466-6531.

## White Pine Ski Tour

January 23

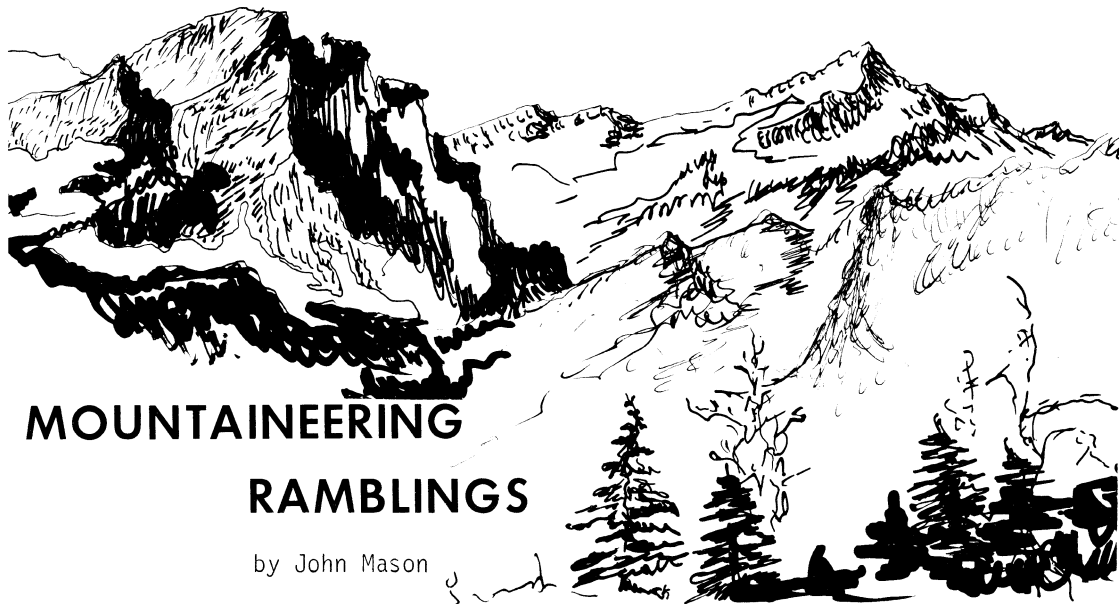
by Jana Stevens

After a twenty-minute wait for possible latecomers at the entrance of the Park City Golf Course, we set out for the Park City gondola lift. About 9:30 a.m., we reached the top of the Jupiter Hill bowl. There, for the first time, we had a glimpse of the valley below which until then was socked in a heavy fog and snowfall. The sunshine did not last long; by the time we bushwacked our way to Scotts Pass, we were again in the midst of a snowfall.

The snow conditions were as variable as weather. Climbing up to and on the Scotts Hill East Ridge, all of us except for one determined "sport" took off our skis because of the lack of snow. We reached the ridge at noon and had lunch near the top of the hill.

Later, we maneuvered down along the ridge to the Upper Iron Canyon and then via White Pine Canyon to the highway. The fog lifted again and the snow stopped; we were able to enjoy beautiful scenery under a brilliant sunshine for the rest of the trip. The snow conditions were such that even the best among us had some magnificent falls. And (secretly) we, the weaker skiers, felt better! By the time we reached the highway, everyone concluded that this trip was one of the best of the season.

Participants: Trudy Healy, Paul Rubenfeld, Yukio Kachi, Allan Abdulal, George Westbrook, Jana Stevens, and Lyman Lewis (leader).



The Beginner Climbing Course will begin later this month. See Paul Horton's article for all the details. The course is intended to teach basic climbing skills and techniques to club members who are interested. Graduates are encouraged to participate in Thursday evening climbs and experience climbs for practice. This year our first experience climb will be on Mule Hollow Wall on the Saturday following the course, and graduates, as well as experienced climbers, are encouraged to attend this enjoyable climb.

The Thursday night climbing at Pete's Rock will continue through April. Beginning May 5 we will move to the Storm Mountain Picnic Area in Big Cottonwood Canyon. To get there, drive 3.0 miles up the canyon from Wasatch Blvd. I don't know at this time if the Reservoir parking lot will be available for parking. If it is, drive through the narrow rock gap, across the bridge, then left down the dirt road to the parking lot. If the gate is closed, turn around and park in the lower Storm Mountain lot. I hope to have this question resolved by the time we meet there. We meet about 6:00 or 6:30 by the dam, if possible. The practice climbs are usually two pitches of F4, F5 or F6 climbing. Hamburgers and beer will be available afterwards for a fee. Experienced climbers and ropes are on hand, but participants are encouraged to have a helmet. The Thursday night climbs are valuable for gaining experience and are usually a great deal of fun as well.

Our events in the near future include a "winter" attempt on Superior this month. Last year's spring climb on Superior was very successful; we hope to do as well this year. May will see the Mule Hollow Wall climb and the Tanners Gulch-Triple Traverse climb. In addition, impromptu climbs are often planned on Thursday nights. On Memorial Day weekend, there will be a Mountaineering High Camp in the Palisades area of the Sierras. John Gottman will be the local leader for this event, which will last five days because of the distance involved. In addition, there will be a shorter trip scheduled for the three-day weekend only. Either event should be a good way to start the summer.

A P P L I C A T I O N   F O R   M E M B E R S H I P

WASATCH MOUNTAIN CLUB  
3155 Highland Drive  
Salt Lake City, Utah 84106  
363-7150

NAME (Print) \_\_\_\_\_ Telephone \_\_\_\_\_

Name of spouse (only if spouse wants membership also) \_\_\_\_\_

Address \_\_\_\_\_ ZIP \_\_\_\_\_

Occupation (Optional) \_\_\_\_\_

I hereby apply for membership in the Wasatch Mountain Club and enclose \$ \_\_\_\_\_ as my annual membership dues for the year \_\_\_\_\_, \$ \_\_\_\_\_ of which is for a subscription to the Rambler for the year and \$4.00 entrance fee. (If joining during January thru August, dues are \$6.00 of which \$5.00 are for a Rambler subscription -- Spouse dues (non-subscribing) are \$3.00 additional. If joining during September thru December, dues are \$3.00 of which \$2.50 are for a Rambler subscription -- Spouse dues (non-subscribing) are \$1.50 additional. Add \$4.00 entrance fee to each application, single or couple. Subscriptions are not deductible from dues. I (do) (do not) desire to receive the Rambler.

I have attended two Club activities in the past 12 months as required for membership such as hikes, ski tours, camping trips, rock-hound trips or work parties and have been recommended by two trip leaders who are Club members. Events such as lodge parties, winter socials, lectures, meetings, etc. are not activities qualifying for membership. I agree to abide by all the rules and regulations of the Club as specified in the Constitution and Bylaws as determined by the Board of Directors.

I am specifically interested in the items checked below:

Hiking \_\_\_\_\_ Ski Touring \_\_\_\_\_ Boating \_\_\_\_\_ Mountaineering \_\_\_\_\_ Cycling \_\_\_\_\_

Conservation \_\_\_\_\_ Writing and Editing \_\_\_\_\_ Organizing social activities \_\_\_\_\_

Lodge Work \_\_\_\_\_ Photography \_\_\_\_\_ Other \_\_\_\_\_

CLUB ACTIVITIES ATTENDED:

1. _____	Date _____	Signature of recommending Trip Leader _____
2. _____	Date _____	Trip Leader _____

(Note: The signature of a Director may be substituted for one Trip Leader.)

\_\_\_\_\_  
Signature of Applicant

ENERGY MISER -- BLUE RIBBON HOMES



**Sam Allan**

- ★ 10" INSULATION IN ATTIC
- ★ 6" INSULATION IN WALLS
- ★ HEAT CIRCULATING FIREPLACES
- ★ DOUBLE PANE INSULATING GLASS  
IN WINDOWS AND DOORS
- ★ SAVE ON FUEL COSTS EACH MONTH

**"BLUE RIBBON REALTOR"**

WE HAVE A NEW ADDRESS BUT WE'RE STILL THE SAME !

545 E. 4500 S. Professional Plaza  
Suite E 130 Murray, Utah 84107

Office: 261-2791

Home: 942-3149

**LAKE MARY TOUR**

February 27

This family snowshoe tour took advantage of a delightful day.....The trip through the woods above the WMC Lodge was a fairyland of white cotton clinging to the sentinel trees of the silence. Surprisingly enough, few people were seen or heard until the return trip. Little wind and twelve inches of powder added to a wonderful day. Catherine Pass was not attempted due to the avalanche danger.

As it was the first time on snowshoes for half of the group, time was taken out for instructions and, of course, for adjustments. Next time out, the group will have the confidence and the know-how needed for a more advanced trip.

Participants: Kenney Stoner (leader), Elmer Boyd (assistant leader), Kay Andrews, Laurie Wingert, John Van Hook, Larry Hoskins, and Doug Stark.

**KELTY  
SIERRA DESIGN  
NORTH FACE  
CHOUINARD  
GALIBIER**

Specialists in lightweight back  
packing, mountaineering and  
ski touring equipment.

**TIMBERLINE  
SPORTS, INC.**

3155 Highland Dr. • Phone 466-2101  
Salt Lake City, Utah 84106

***WASATCH MOUNTAIN CLUB, INC.***

***3155 Highland Drive/Salt Lake City/Utah 84106***

***Vol. 54, Issue 4 (1977)***

SECOND CLASS  
POSTAGE PAID  
AT SALT LAKE  
CITY, UTAH.

BOARD OF DIRECTORS

DENNIS CALDWELL	PRESIDENT	942-6065
PEGGY TAYLOR	SECRETARY	272-4624
STEWART OGDEN	TREASURER	359-2221
MARY MANLEY	BOATING	277-6307
WALTER HAAS	CONSERVATION	534-1262
KARIN CALDWELL	ENTERTAINMENT	942-6065
FRAN FLOWERS	HIKING	581-9083
JIM MASON	KAYAKING	355-3810
RANDY TAYLOR	LODGE	272-4624
MICHELLE HOLDAWAY	MEMBERSHIP	272-5450
JOHN MASON	MOUNTAINEERING	272-7558
JOYCE SOHLER	PUBLICATIONS	272-2624
LYMAN LEWIS	SKI TOURING	1-649-9632