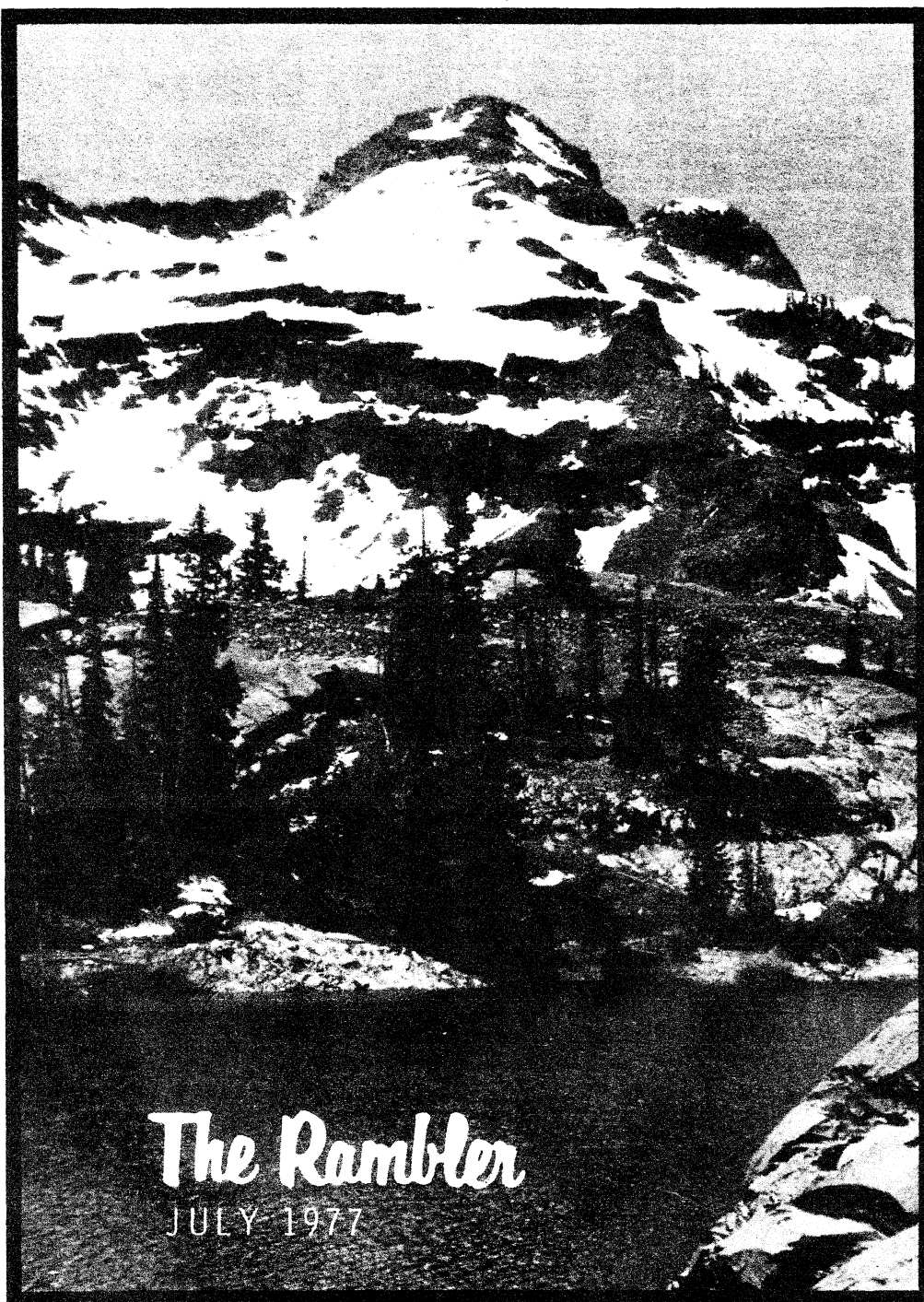


Official Publication of THE WASATCH MOUNTAIN CLUB



The Rambler

JULY 1977

News and Notices

COVER: Photograph of Lake Blanche
by Trudy Healy

Rambler Deadline

...for August is July 15, Friday.

Type (double-space) your articles/
schedules, indicate your name and
telephone number on your articles,
slides, prints, etc., and place your
slides or prints in protective fol-
ders. Mail to (or drop by):

WASATCH MOUNTAIN CLUB
3155 Highland Dr.
Salt Lake City, Utah 84106
ATTENTION: RAMBLER EDITOR

THE RAMBLER is published monthly
by the Wasatch Mountain Club, Inc.
3155 Highland Dr., Salt Lake City,
Utah 84106, telephone, 363-6150.
Subscription rates of \$5.00 a year
are paid for by membership dues
only. Prospective members may ob-
tain 2 free RAMBLERS (consecutive
issues) by contacting the Member-
ship Director. Direct correspon-
dence dealing with changes of ad-
dress, mailing, etc., to the Member-
ship Director also. Second Class
postage is paid at Salt Lake City,
Utah. Publication Number is 053410.

Thanks....

...to Steve Phillips and Jan Paarmann
for help in editing this month's
RAMBLER.
...to Leona Conn, Sheila Wolf, Penney
Russell and Peggy Taylor for typing
material.



...to Larry Hoskins for contributing
his time and talents in laying out
the RAMBLER artwork.
...to Dale Green for mailing the cur-
rent issue.
...to Paul Horton and Camille Pierce
for general assistance.

The Wasatch Mountain Club is governed by a Board of Directors - 13 representa-
tives elected by the membership. Through the courtesy of Timberline Sports, our
mail is sent to their address, 3155 Highland Drive, for collection only. The Club's
telephone is located at O'Dell's Shoe Repair Shop, 425 South 8th West. This phone
is maintained as an answering service only by Life Members 'Pete' (O'Dell) Peter-
son and wife 'Pinky'. They take time out from their work to answer the phone and
relay incoming messages to the proper Director. The Petersons do not hold any
office, or attend Board meetings or are they informed by the Board of official ac-
tions. If a trip leader cannot be contacted or is not specified, call the Director of
that department for information. The Board strongly desires to hear comments,
suggestions, inquiries, and criticisms concerning the operation of your Club.
Please feel free to phone any Director or write to the President. Names will be
withheld upon request, but anonymous letters will be disregarded.

Mountain Club business is conducted only on the first and third Wednesdays of each
month. At that time, and only at that time, is the mail opened, new membership
applications voted on, dues payments recorded, address changes made, and all
other business requiring board action conducted. All board members cannot attend
all board meetings and although an effort is made to fill in during a member's ab-
sence, some business is held for action until the next meeting.

Club Activities ... July, 1977

HIKING INFORMATION: Members participating in easy or intermediate hiking (rating below 7.0) are generally not required to register with the leader. Unless otherwise stated, advanced hikes (rating above 7.0) do require registration. Adequate equipment is a must for advanced hiking. You can participate in these events only if you have demonstrated your ability on other hiking activities and if you have adequate and well broken-in boots with good Vibram-type

soles and suitable protective clothing. Special equipment, such as an ice axe, may be specified and you are expected to be able to handle such equipment. Remember that these restrictions are set for your safety as well as that of your fellow members.

Children are permitted on hikes with a rating of less than 3.0; however, permission of the leader is required on hikes with a rating between 3.0 and 5.0.



July 2-4
Saturday-Mon.

HAYDEN PEAK (UINTAS). El. 12,475. Rating: 6.0. The leader prefers to make this a weekend trip with Hayden Peak on the agenda for Saturday, camp at McPheter Lake, a hike to Agassiz Peak on Sunday and a return to Salt Lake on Monday. A single day outing might be arranged if the group prefers a shorter trip. Call Jackie Thomas at 487-9340.

July 2-4
Sat. - Mon.

The Lodge will be available for WMC members. A host is needed. If you are interested, call Randy Taylor at 262-6524 for further details.

July 2-4
Sat. - Mon.

TETON MOUNTAINEERING HIGH CAMP. This year we will try for a camp on the Teton Glacier with Teewinot, Owen, the Grand, and a number of shorter routes available. Register with the leader, Bill Shepard, 262-4452 (home) or 255-3563 (work).

July 2-4
Sat. - Mon.

ZION CANYONEERING TRIP. Tentative plans for this trip to Zion National Park involve doing Orderville Canyon on Saturday and Parunaweap Canyon on Sunday. Monday will be optional. Both ropework and some swimming can be expected. The group will be limited to 15 persons. Call Mike Hendirckson at 278-9856 for details.

July 2
Saturday

GRANDEUR PEAK. El. 8,299. Rating: 4.5. Always a popular outing. Set your own pace and enjoy the day. Meet at the Movie (Olympus Hills Shipping Plaza) at 9:00 a.m. Leader: Albertha Western, 582-2964.

July 2
Saturday

MT. RAYMOND AND GOBBLERS KNOB FROM HIDDEN FALLS. El. 10,241. Rating: 9.0. These peaks lie between Big Cottonwood and Millcreek Canyons. The view from each is superb. Register with leader, Paul Rubinfeld at 487-1427 after 10 p.m.

- July 3
Sunday MT. SUPERIOR FROM ALTA. El. 11,132. Rating: 7.0. This hike entails a steep scramble to the ridge and a short run to the peak. Meet at the mouth of Big Cottonwood Canyon at 9:00 a.m. Leader: Dwight Nicholson, 359-6178.
- July 4
Monday MT. AIRE FROM LAMBS CANYON. El. 8,620. Rating: 5.0. Meet at the east end of the K-Mart parking lot at Parleys Way at 8:00 a.m. Leader: Dennis Zwang, 278-8273.
- July 4
Monday LAGOON BICYCLE RACES. Racing for all types of riders. Meet at 10:00 a.m. Director: Alan Miller, 392-3911.
- July 7
Thursday EVENING CLIMBING AT STORM MOUNTAIN. See June 2 for details and directions.
- July 7
Thursday THURSDAY EVENING NATURE HIKE. Professor Mike Treshow, University of Utah Biologist, will describe local flora. Meet at 7:00 p.m. at the "Storm Mountain Quartzite" sign just beyond the Main Storm Mountain picnic area parking lot, for car pooling to a suitable area. Leader: Mike Treshow, 467-1022.
- July 9-10
Sat. - Sun. ALPINE CANYON KAYAK TRIP. Two days of great kayaking on the Snake River is planned. Call Dan Thomas at 272-6435 for details.
- July 9-10
Sat. - Sun. SNAKE RIVER ALPINE CANYON. Adult beginner trip. We plan to run the canyon once each day and party in Jackson on Saturday night. This will be a car-camping trip so you won't need waterproof bags for your gear. Send your \$10.00 deposit to Ken McCarty 8190 Scandia Way, Sandy, 84070. Phone 943-1977 for more details.
- July 9
Saturday GRIZZLY PEAK AND LONE PEAK VIA SECOND HONMONGOG. El. 11,253. Rating: about 12.0. This is a first - - so we can't be sure what Sam has in store for us. Come along and find out. Meet in the parking lot near Auerbachs (Fashion Place Mall) at 6:30 a.m. Leader: Sam Allan, 942-3149.
- July 9
Saturday ALEXANDER BASIN TO BOWMAN FORK. El. 10,000. Rating: 7.0. This trail you've seen and wondered where it goes. This is your chance to find out. Meet at The Movie (Olympus Hills Shopping Plaza) at 8:00 a.m. Leader: Walter Haas, 534-1262.
- July 9
Saturday MT. MILLICENT. El. 10,452. Rating 3.5. You ski it in winter so let's enjoy it now too. Meet at the mouth of Big Cottonwood Canyon at 8:30 a.m. Leader: Mike Hendrickson, 278-9856.
- July 10
Sunday MT. MAJESTIC. El. 10,720. Rating 3.0. The trail to Clayton Peak (alias Mt. Majestic) is especially enjoyable for beginning hikers and children. You can stop at Snake Creek Pass or you can go all the way. Meet at the mouth of Big Cottonwood Canyon at 8:30 a.m. Leader: John Veranth, 278-5826.
- July 10
Sunday WHITE PINE LAKE - WHITE BALDY. El. 11,321. Rating: 5.0 - 8.5. You can stop at the lake or continue on to the peak and feast

your eyes as well as your stomach. Meet at the mouth of Little Cottonwood Canyon at 8:30 a.m. Leader: John Gottman, 359-4693.

July 10
Sunday

MT. TIMPANOGOS. El. 11,750. Rating: 11.0. Along and popular hike for those who are in shape. We will ascend via the Timpaneke trail. Meet at the Timpaneke Trail Head at 9:00 a.m. Leader: Bill Shepard, 262-4452.

July 10
Sunday

PINEVIEW BIKE TOUR. This flat, easy to moderate, 25-mile tour is very popular. Sights include a visit to the Juntsville Monastery. Meet at north side of Huntsville Park, Huntsville, at 10:00 a.m. and bring your lunch. Leader: Alan Stockland (Sierra Club), 621-6667.

July 14
Thursday

EVENING CLIMBING AT STORM MOUNTAIN. See June 2 for details and directions.

July 14
Thursday

THURSDAY EVENING HIKE. Green's Basin. Drive 9.0 miles up Big Cottonwood Canyon from Wasatch Blvd. to the "Meeting of the Glaciers" sign on the north side of the road. Meet at 7:00 p.m. Leader: Dale Green, 277-6417.

July 16-17
Sat. - Sun.

NORTHSIDE CANAL KAYAK PRACTICE. This may be the only decent water to be found. Call Jim Mason at 355-3810 for details.

July 16-17
Sat. - Sun.

WESTWATER RAFT TRIP. We don't have any idea what the water level will be at this time so pay your money and take your chances. This is an advanced trip so you should have had experience on two previous Club trips. Our permit is for Saturday only so we may plan a hike in the LaSal Mountains for Sunday. Send your \$20.00 deposit to Mary Manley, 3681 South 23rd East, SLC 84109. Is there anyone foolish enough to volunteer to be trip leader ???

July 16
Saturday

CLEANUP CAPER. The WMC has volunteered two cleanup crews to assist the Deseret News on behalf of the Forest Service in our local canyons and in the Uintas. Now is your chance to give a little of your time to help maintain the areas which contribute to your own pleasure throughout the year. We won't be the only participants. The Boy Scouts and various civic organizations will also be involved. We will be solely responsible for Upper Red Pine Lake and the Yellowstone Creek area in the Uintas. Please join us for a day of relaxed hiking with a practical goal. Bring a backpack if you have one or can borrow one, and several large plastic garbage bags. RED PINE CLEANUP. Call Leader Carl Bauer at 355-6036. Leader needs ride. YELLOWSTONE CREEK (UINTAS) CLEANUP. Call Leaders, Dennis and Karin Caldwell at 942-6065.

July 17
Sunday

SPANISH FORK PEAK FROM MAPLE CANYON. Rating: 10.0. This peak lies south of the town of Spanish Fork and offers one of the better hikes in the southern Wasatch. Call and register with

- the leader. Meet at the Fashion Place Parking lot near Auerbachs at 6:30 a.m. Leader: Sam Allan, 942-3149.
- July 17
Sunday MAYBIRD LAKES. El. 10,000. Rating 5.0. A delightful place to spend a hot afternoon. Meet at the mouth of Little Cottonwood Canyon at 6:30 a.m. Leader: Cathy Kreuter, 581-1949.
- July 17
Sunday ROCKPORT DAM BICYCLE TOUR. This moderate trip (some hills and 35 miles round trip) tours a very scenic canyon area. Bring lunch and water. Meet at the north end of the reservoir at the dam view parking area, at 9:00 a.m. Leader: Dick Hanson, phone (LAW) 255-6730.
- July 21
Thursday EVENING CLIMBING AT STORM MOUNTAIN. See June 2 for details and directions.
- July 21
Thursday THURSDAY EVENING HIKE. Broads Fork. Meet at 7:00 p.m. at the "S" Curve about 4.5 miles up Big Cottonwood Canyon from Wasatch Blvd. There is plenty of parking along the road and in the trees on the right just after the first left turn. Leader: Dale Green, 277-6417.
- July 23
Saturday BRIGHTON RIDGE. El. 10,795. Rating 10.0. We will start at Snake Creek Pass and follow the ridge around the Brighton Bowl to Millicent. There will be lots of up and down. Meet at the mouth of Big Cottonwood Canyon at 6:30 a.m. Leader: Fran Flowers. 581-9083.
- July 23
Saturday MT. BALDY FROM ALBION BASIN. El. 11,068. Rating: 3.5. The route will pass Secret Lake and ascend the ridge to the peak. Meet at the mouth of Little Cottonwood Canyon at 9:00 a.m. Leader: John Marks, 278-1092.
- July 23-25
Sat. - Mon. WIND RIVERS MOUNTAINEERING HIGH CAMP. We will return to the Temple Peak area again this year. The approach is moderate, the hiking and climbing routes are numerous. Hikers are welcome on this trip. Peaks include Haystack, Temple, East Temple, and Steeple Pinnacle. Call the leader for information and registration. Leader: Lew Hitchner, 262-7688 (HOME) or 581-8377 (WORK).
- July 24
Sunday UTAH PIONEER TRAIL BICYCLE TOUR. This moderate to difficult ride covers approximately the route the Utah Pioneers took when they came into the Salt Lake Valley 130 years ago. Bring lunch and water. Meet at Rotary Park at the mouth of Emigration Canyon, at 8:30 a.m. Leader: Glen Silcox (La Strada), 581-1305.
- July 24
Sunday LAKE BLANCH-SUNDIAL. El. 10,120. Rating: 5.0 -8.5. You may stop at the lake or go all the way to the peak. This is a repeat as our first attempt was cut short by waist deep snow. Carl promises that we'll make it this time. The leader will need a ride. Call Carl Bauer at 355-6036.

- July 26
Tuesday
BIG COTTONWOOD HISTORICAL ASSOCIATION (affiliated with the Utah State Historical Society) meets at the Silver Fork Lodge at 7:30 p.m. For further information contact Elmer Boyd, 299-7814.
- July 28
Thursday
EVENING CLIMBING AT STORM MOUNTAIN. See June 2 for details and directions.
- July 28
Thursday
THURSDAY EVENING HIKE. Lake Solitude. Meet at 7:00 p.m. at the start of the loop road in Brighton, at the head of Big Cottonwood Canyon, across from the Brighton Store. Allow extra time to drive up the canyon. Leader: Dale Green, 277-6417.
- July 30 -
August 7
Sat. - Sun.
NORTH CASCADES MOUNTAINEERING TRIP. The exact destination of this trip will depend on the desires of the participants. Possibilities include Ranier, Shuksan, and Baker. Call the leader for information and registration. Leader: Bob Bamford, 583-3366.
- July 30-31
Sat. - Sun.
ALPINE CANYON KAYAK TRIP. More great kayaking on the Snake River. Call Jim Mason, 355-3810 for details.
- July 30
Saturday
AMERICAN FORK TWINS FROM ALBION BASIN. El. 11,489. Rating 7.5. Have good boots and be prepared for some exposed scrambling on this one. If there is the interest we could extend this hike along the ridge to the Pfeifferhorn which would up the rating considerably. Register with the leader. Leader: Lew Hitchner, 262-7688.
- July 30
Saturday
TIMPANOGOS MOONLIGHT HIKE. El. 11,750. Rating 10.5. Get out your flashlights and prepare to do a little stargazing. It may be a day or so late for this one, but our leader assures us of a good time. The leader will need a ride. Call leader, Carl Bauer at 355-6036.
- July 30
Saturday
MOVIE EVENING AT THE LODGE. We will spend an evening in the company of W.C. Fields, Laurel and Hardy, and other familiar favorites. An avid film collector, Stephen Kendorski, will do the honors. Light refreshments will be provided. Price: 50¢ per person. Lights out at 8:00 p.m.
- July 31
Sunday
UINTAS HIKE. Rating: about 10.0. Milt hasn't decided for sure just where we will go, but you can be sure it will be good. Register with leader Milt Hollander at 277-1416 by Friday, July 29.
- July 31
Sunday
MT. MAJESTIC. El. 10,300. Rating: 4.5. This fine hike follows a cool shady trail to Snake Creek Pass then on to the peak which overlooks Heber, Park City, and Brighton. Meet at the mouth of Big Cottonwood Canyon at 8:30 a.m. Leader: Joyce Sohler, 272-2624.

- August 4
Thursday EVENING CLIMBING AT STORM MOUNTAIN. See June 2 for details and directions.
- August 4
Thursday THURSDAY EVENING HIKE. Red Pine-White Pine Canyon. Meet at 7:00 p.m. (PLEASE BE PROMPT) in the parking area on the right just before the "Y" at the mouth of Little Cottonwood Canyon. Leader: Reg Swartz, 278-0888.
- August 6-7
Sat. - Sun. ALPINE CANYON FAMILY RIVER TRIP. This was a fun trip last year and should be the same this year. We will be car-camping so there is no need for waterproof bags for your gear. Saturday night we will go to Astoria Hot Springs for swimming if there is any interest. To register your family, send \$ 20.00 and the names and ages of those who are going, to Bill Yates, 625 West 6th South, Brigham City, Utah 84302. Phone 1-723-3853 evenings or 322-5513, Ext. 32361 during work hours. Non-family types are welcomed and please, no children under six.
- August 6
Saturday MINERAL FORK TO LAKE BLANCH. Rating 6.0. We plan to start early so as to miss the traffic. The upper Mineral Fork area is a beautiful meadow with streams and some interesting old mines. We will cross the ridge and return via the Lake Blanch trail. Meet at the mouth of Big Cottonwood Canyon at 7:00 a.m. Leader: Clint Lewis, 295-8645.
- August 7
Sunday WHITE PINE LAKE. El. 10,000. Rating: 5.0. Join us for a leisurely hike up to this high alpine lake. The leader needs a ride. Call Leader Carl Bauer at 355-6036.
- August 7
Sunday LAKE BLANCHE - DROMEDARY. El. 11,107. Rating 10.5. Those who would like to do something less strenuous may stop at the lake. The rest, be prepared for some exposure and a scramble. Meet at the mouth of Big Cottonwood Canyon at 8:00 a.m. Leader: Elmer Boyd. 299-7814.
- August 7
Sunday DRAPER - LEHI BICYCLE TOUR. This moderate ride (25 miles) parallels the Jordan River through farm lands and open spaces. Meet at the I-15 Draper Exit (12600 South). Leader: Glen Silcox - La Strada - 581-1305.
- August 11
Thursday EVENING CLIMBING AT STORM MOUNTAIN.
- August 11
Thursday THURSDAY EVENING HIKE. Elbow Fork to the Terraces. Meet at 7:00 p.m. at the entrance to the Terraces picnic area. Drive 4.6 miles up Millcreek Canyon (3800 South) to the Terraces sign. Park along the road and leave room for traffic and those who will park next to you. Do not park in the picnic area as the gate is locked at 8:00 p.m. Leader: Dale Green, 277-6417.

August 12-14 Friday-Sunday	LADORE CANYON KAYAK TOUR. A kayak tour through Ladore Canyon on the Green River. You must have gone a previous kayak trip or tour to be eligible for this tour. Limited sign-up. Register with Bill Sill (278-1193) at least one week before departure date in order to arrange shuttle.
August 13-16 Saturday-Tuesday	TETON WILDERNESS TRIP. Get out the Bear Bells! This trip was a huge success last summer. Call Sam Allan at 942-3149 for details.
August 13 Saturday	CHAMBER MUSIC AT THE LODGE IN BRIGHTON. Performers as well as listeners are most welcome to this event. For more details, see the August <u>Rambler</u> and the note on page 9 of this issue.
August 20-21 Saturday-Sunday	SNAKE RIVER - ALPINE CANYON. Adult river trip. Plans are flexible at this time. Plan on an enjoyable weekend in any case. We also need a trip leader. Call Mary Manley at 277-6307 to sign up or for more details.
August 20 Saturday	OLD TIMERS' PARTY at the Lodge. Final details in the August <u>Rambler</u> .
August 27 Saturday	UTAH VALLEY BICYCLE TOUR. Call Glen Silcox - 581-1305 or Richard Hanson - 255-6730 for time and starting place.
September 5 Monday	CACHE VALLEY CENTURY BICYCLE TOUR. A moderate 100-mile tour. Come ride and participate in the Wellsville City Founders Day Celebration. There will be a Sag Wagon and a LAW patch supplied for your \$2.00 fee. Meet at 7:30 a.m. at the Wellsville City Park in the center of Wellsville, Utah. The grocery store in Swan Lake, Idaho (the half-way point where we will turn and go back) will be open. Leader: Richard Hanson - (LAW) - 255-6730.
September 11 Sunday	EAST CANYON BICYCLE TOUR. A moderate trip (some steep hills) through the hills of Morgan County. Meet at railway depot in Morgan at 9:00 a.m. Bring lunch. Leader: Glen Silcox (La Strada) - 581-1305.
September 16-19 Friday-Monday	CATARACT CANYON. Advanced raft trip. This trip involves three days of flat water floating and one day of sheer terror through Cataract rapids. We need a trip leader for this. Phone Mary Manley at 277-6307 for more details.
September 24 Saturday	NEPHI CENTURY BICYCLE TOUR. A moderate to difficult ride through Juab and Sanpete Counties. Meet at 7:30 a.m. in the Nephi City Park. For a \$2.00 fee a Sag Wagon and a LAW Patch will be provided along with a memorable ride. Leader: Glen Silcox - (La Strada) - 581-1305.

October 8-9
Saturday-Sunday

WESTWATER CANYON. Will the drought be over by October?
We can't predict water levels but this has proved to be an
exciting trip in past years. Advanced level boaters only.
Send your deposit of \$20.00 to Mary Manley, 3681 South 23rd
East, SLC, 84109. Her telephone is 277-6307.



LOW WATER SALE

The boating department still has some waterproof river bags for sale at \$12.00 each. If you want some, call 277-6307. Those people who have not picked up their lifejackets and river bags, please contact Mary Manley after July 10 at the above number. You have already paid for this stuff so come and get it or I'll charge for storage!

NUTS ANYONE ?

Shelled whole natural California almonds --- 5 pounds for \$7.50. This is about 2/3 the price in the health food stores. These nuts make great snacks for hiking, climbing, river running, etc. Call 277-6307 for more information.

MUSIC ANYONE ?

All WMC members who play an instrument are encouraged to participate in the Chamber Music Evening at the Lodge on August 13. In the interest of getting a well balanced (and well rehearsed) program, please contact the impressarios as soon as possible for further details:
Charlie Keller (467-3960) and Karin Caldwell (942-6065).

TWIN PEAKS

June 5

by John Mason

After missing my alarm and most of my breakfast, I found myself hurrying up Broad's Fork wondering how far ahead the rest of the group was. Luckily it wasn't far, so by the time we reached the upper snow-fields at the head of Broad's Fork my panting and wheezing were lost in the chorus. We finally pulled onto the ridge at 12:30 and everyone took time to enjoy some air, food, and warm sunshine. Shortly we were on the move again. The climb along the ridge involved some interesting rock hopping, scrambling, and scree shuffling. Following a pause at the East Summit, most of the party reached the West Summit by 2:00. During our blissful rest we noticed that the thunder and lightning really were coming our way. We made amazing progress downhill at that point. The snow-fields provided some spectacular glissading - not all intentional, but everyone survived. Pants seats dried out on the quick hike out, and we were all safe and sound back at the cars before 5:00.

Participants: Yukio Kachi, leader; Michael Franklin, Barbara, John Moellmer, Max McLanahan, Roy Johnson, Jana Stevens, Phyllis Robison, Roger Rollins, John Van Hook, John Mason, Cal Osborn, Hector Pearson.

THE BEATOUT

June 11

by John Mason

Once again a group of the Club's fleet-of-foot gathered too early on a Saturday morning, weighed anchor at 7:00 a.m. and set a course for the Pfeifferhorn. After an exciting stream crossing, boring snow slog, and stimulating ridge run, we squirmed onto the summit about 10:15 for breakfast. Three of the original 14 regained sufficient sanity at this point to return from whence they had just come. The rest of us plodded on, stirred to action by a cold wind. An eon or so of exciting ridge running brought us to the South Peak of Thunder Mountain at 1:30, where we enjoyed lunch and other delicacies, and amused our now feeble brains by reading old summit register entries. At 2:00 we started down. By some miracle yours truly found the reservoir and, presumably, the trail. Did someone say trail? We did more or less follow an ill-defined succession of miserable cairns over hill and dale, through boulders and brush, 'till at last the trail was well enough defined to hint where it once had led. The last few miles were a beatout indeed, so much so that the first 8 people in line missed the rattlesnake. We finally staggered onto the road at 6:00 and retired to the Canyon Inn to soak our inner wounds.

Participants: John Mason, Leader; John Sloan, Lew Hitchner, Bob Case, Lynn Larsen, Bob McCaig, Walter Haas, Diana Schoenberg, Martin Knaphus, Charlie French, Mike Treshow, Judy Ballantine, Bill Shepard, Greg Janek.



SUNSET PEAK

June 19, 1977

by Larry Hoskins

Thirteen hikers met at the mouth of Big Cottonwood Canyon. Led by our chosen leader, Elmer Boyd, we started out on a beautiful day. The weather was perfect for hiking and a wonderful family trip, with Elmer pointing out the local flora.

From above, Lake Catherine resembled a ballet of diamonds dancing across the surface as the wind touched the emerald pool. The panorama from the peak was breathtaking, and all hikers made the top.

On the return trip, several hikers glissaded down the snow, off the peak, with joy and wet bottoms.

Hikers: Julie Johnson, Sue Woodson, Rip Johnson, Steve England, Katie Hedberg, Nadine Fillbeck, Gert Kristiansen, Larry Hoskins, Cal Giddings, Mike Giddings, George Healy, Betty Bottcher and Elmer Boyd.

FITNESS SEMINAR

The Utah Governor's Council on Physical Fitness will present a seminar entitled "The Marathon: Body, Mind, Disease Prevention," Saturday, July 23rd at the University of Utah Orson Spencer Hall.

The seminar will feature George Sheehan, cardiologist, author, sports injuries expert and columnist with Physician and Sports Medicine and Runners World.

Also included are Jack Scaff, cardiologist and director of the Honolulu Cardiac Rehabilitation Clinic; Tom Bassler, pathologist and editor of the American Medical Joggers Association circular.

Hear about the effects of exercise on disease prevention, emotional well-being, and quality of life. For more information call 533-6120 or write the Utah Governor's Council on Physical Fitness, 44 Medical Drive, Salt Lake City, Utah 84113.

sdrawkcaB egdiR tacdliW

June 5

(Wildcat Ridge Backwards)

by Greg Janiec

At 7:30 a.m. the hikers began the trek up Mount Olympus from Pete's Rock. The sun crept serenely over the mountain as we wound our way up through a green sea of new vegetation. At the top of Olympus we relaxed, reorganized and enjoyed the view.

From Olympus the hike followed Wildcat Ridge to Mount Raymond. The ridge offered fine hiking and scrambling. We had the choice of scrambling the knife edge ridge or of hiking just below the rocks. Both afforded fine travelling and spectacular views.

As the day progressed, ominous clouds appeared on the horizon. In spite of the accompanying lightning and thunder, they were a welcome sun shade to the already reddened hikers, and provided a perfect backdrop for the snow-capped peaks of Mill-Creek and Big Cottonwood canyons.

The lunch break was unique. While gulping down our meager fare and scanning nearby Twin Peaks for another group of WMC climbers, our most generous leader brought forth a large, juicy watermelon. The lunch became a feast as we slurped and munched away. After consuming half the fruit and leaving the other half as a finishing incentive, we pushed on.

With twelve hours of cruising behind up, we huffed and puffed our way to the top of Mount Raymond. Resting there, we sipped Drambuie and munched cheese and salami, courtesy of Larry.

After a "skree" run down Raymond we continued our trek through Mill A Basin and down Butler Fork to the road. The verdant meadows spotted with wildflowers, the shimmering green canopy of the quaking aspen, the murmuring of the stream; the fatigue, the sense of accomplishment and the company of fine people made for a memorable day.

Participants: Larry (Watermelon Man) Swanson - leader, John Sloan, Diana Shoenberg, Gregory Janiec, Martin Knaphus, Jackie Thomas, Audrey Stevens, Paul Hewitt.



HIKING BRIEFS

BIG BLACK

May 22, 1977

by Carl Bauer

This effort, which too often marks the only frustration of our climbing year, again began ominously with a locked gate at Mueller Park. It continued with heavy, wet snow and laborious bushwacking which could, without apology, have ended our day at Rudy's Flat.

Still, we persevered and everyone completed the climb to the summit.

For the return we chose North Canyon with its "heavenly" trail, and were spared the lower canyon traverse by kindly motorists who ferried our drivers back to Mueller Park.

Climbers: Jana Stevens, Yukio Kachi, Art Griffin, Erika Hood, John Van Hook, Craig Wallentine, Ann Cheves, Charles Ranney, Tom Walsh, Carl Bauer.

DESERET PEAK

May 28

by Carl Bauer

Our climb began from South Willow Canyon where we were joined by new friends from Dugway for a challenging day with assorted objectives--the mountain proper, South Willow Lake, and thrilling photography--with wet snow of increasing depth an added challenge.

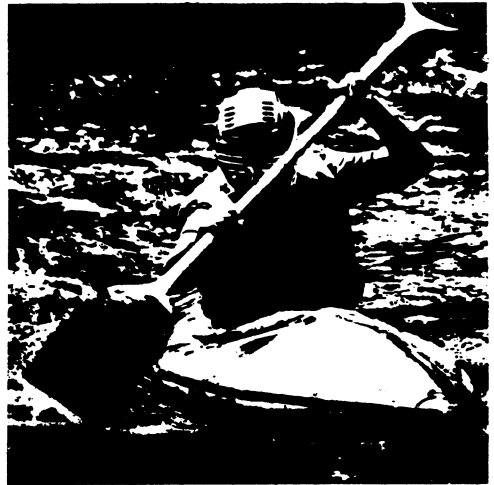
Participants: Su Armitage, David Armitage, Gerald Horton, Randy Taylor, Dr. Frank West, John VanHook, Craig Wallentine, Paul Rubenfeld, Jim Brediger, Richard Zeamer, Geoffrey Zeamer, and Carl Bauer.
From Dugway: Bernie Goertz, Jack Sutton, and Ben Garrett

HIKING COMMITTEE 1977

This is a long overdue notice just to let you know who is to be commended or blamed, as the case may be, for the compilation of this year's hiking schedule.

These patient, tolerant souls are just aching to hear your problems, complaints and suggestions.

Mike Hendrickson	278-9856
Sam Allan	942-3149
Oscar Robison	943-8500
Trudy Healy	583-3411
Elmer Boyd	583-2292
LeRoy Kuehl	582-6890
Fran Flowers	581-9083



Kayaking is Crazy

Kayaking is crazy! Imagine being wedged into a little boat with wildwater and rocks all over... After you learn a few tricks and practice a bit, it isn't so insane, in fact it's terribly addicting. If you get into a boat and experience the river by the seat of your pants, just once, you'll be hooked. We know. We all were.

Drop by Timberline and take a kayak class, or chat about boats, accessories and rentals.

Timberline Sports
4155 Highland Dr. • 466-2101

HORSESHOE CANYON TRIP

Memorial Day Weekend

by Sandy Taylor

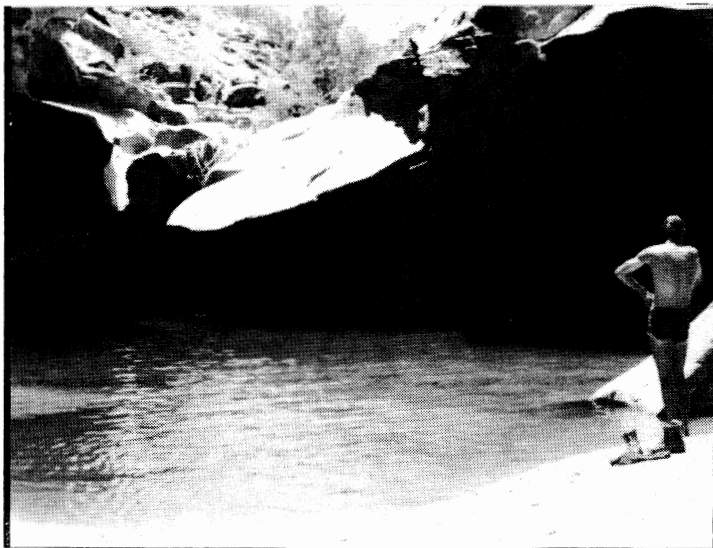
This was a desert foray well-prepared for. Trip leaders Charlie Keller and Mike Hendrickson had made two separate scouting expeditions to ascertain that their proposed route down Two Mile Canyon, along the Green River, and up Horseshoe Canyon into that section of Canyonlands National Park containing the Barrier Creek petroglyphs was passable. The two scouting parties confirmed that it could be done, and fourteen venturesome souls got together for the trek. Charlie and Sandy set forth first from Salt Lake to prepare the way by digging out any sand dunes that had covered the road into Two Mile. Unfortunately, they got detained by a too-good steak cookout and didn't accomplish that task, so the trip really began with digging out Charlie's jeep-like Z-car from the sand. After much maneuvering of vehicles and the late arrival of the Stevens vehicle with the majority of our party (despite Charlie's very detailed map, they somehow went astray) the fourteen were camped beside the trailhead for the descent into Two Mile Canyon.

Two Mile, at least according to Ruta, rated a thumbs-down (and she didn't even experience the real challenge of climbing out of there). However, it can be said in its favor that it is an exciting old mining trail almost obliterated by the elements and discovered only by the hawk-eyed gaze of Scout Keller. It may be only two miles to the river, but they are very memorable ones when one has a heavy pack. Once the river was at hand, however, spirits rose, and most of the party took the time for a refreshing dip.

By mid-afternoon we were into Horseshoe Canyon, a twisting steep-walled tributary to the Green with a beautiful intermittent stream marking its course. Reeds and cat-tails cut up the legs of those who defied horse flies, deer flies and no-see-ums in pursuit of the elusive cool and refreshing breezes. After several miles of water, quicksand and flies we came to the barriers which give the creek its name. At this point the author, nimble-footed as ever, made a graceful pratfall and pitched forward, pack and all, into the creek. With some assistance from Charlie and numerous band-aids and a little booze, she recovered and survived the rest of the hike. It just takes a little more experience!

At mid-afternoon we reached the high point of the trip: as the second contingent rounded a bend we caught sight of the first group at a magnificent green pool, nestled in a deep hole and fed by a gentle waterfall. Some stopped to swim and others just stopped, but none could resist the spot's enchantment. Inveterate waterhole-swimmers like Mike Omana and Roly Pearson could scarcely be torn away, and Mike Hendrickson spent hours there, ostensibly waiting for the rest of the party to catch up. It was truly an enchanting spot.

That night we camped deep in the canyon, and the campfire warmed some and fed others on such backpacking delights as shish-ka-bob. We spent a peaceful night under the stars, and the next day made it out of the canyon in good time to leisurely study the spectacular pictographs at Barrier Creek. The desert sun only really got hot as we climbed out of the canyon, and we all had admiration for Roly, who hiked along in handmade moccasins with his trusty black umbrella shading him from the sun--eccentric perhaps, but practical!



"...none could resist the spot's enchantment."

One cannot end this story without a postscript. Audrey's faithful Travelall gave up the ghost at Two Mile Canyon and broke its axle, stranding seven passengers at the end of the road. Fortunately Mike Hendrickson sensed their plight and went back to the scene of the disaster, and the weary hikers were jammed into his jeep for the forty mile dirt trip to Green River. For Audrey, memories of Horseshoe will linger longer perhaps than for the rest of us, as she contemplates a horrendous towing bill, an immeasurable repair charge, and a vehicle still living (or dying?) in Green River. The rest of us, however, made it back to Salt Lake in good time with many happy memories.

Participants: Charlie Keller and Mike Hendrickson, leaders. Sandy Taylor, Marisha Dailey, Bob and Ruta Ehlers, Leroy and Barbara Kuehl, Roger Rollins, Peter Hanson, Mike Omana, Roly Pearson, Audrey Stevens, and Stan Davis.



Mountaineering Ramblings

by

John Mason

Thanks to Titanic Paul Horton, the Beginner's Climbing Course was again a success. Several of the graduates have become very enthusiastic climbers. The Mule Hollow Wall experience climb had a good turnout after being postponed a week due to rain. A mixed group of beginning and experienced climbers had a very enjoyable day.

I missed John Gottman's Palisades high camp, but all reports indicate that a good time was had by all. See John's trip report for more details.

Due to heavy people-pressures in the Tetons, the size of groups has been limited to 12 people. As a result, our July 4th high camp has to be limited to 12 participants. It appears that in the future, we will need to have multiple trips going on popular weekends if we continue to go to heavily-used areas. It's unpleasant to have to limit trip size, but as more people use our favorite areas it will undoubtedly become necessary more often.

We are scheduling a weeklong trip to the North Cascades during the first week of August. Bob Bamford, who is familiar with the area, will be leading the trip. See the schedule of events for more information on this trip.

Finally, due to circumstances beyond our control, we have been forced to use the lower parking lot at Storm Mountain on Thursday evenings. Fortunately, this has worked out quite well, and except for a few rained-out May days, the Thursday evening sessions have been well attended.

Special thanks to all who have helped prepare the hamburgers and to Bill Shepard for taking care of the beer every week.



MOUNTAINEER SPORTS

University Store
207 So. 1300 East
582-0427

Trolley Square
East Bay
582-2338

LODGE WORK PARTY

June 4, 1977

by Larry Hoskins

The Wasatch Mountain Club's advance guard mustered for combat at 0830. The less than mighty army moved up Big Cottonwood Canyon for a frontal assault on the WMC Lodge, nestled in the beautiful Wasatch Mountains. The Lodge, a formidable adversary, lay crouched, sedately in the tall pines, with snow fondling its corpulent perimeter.

Leader and General Randy Taylor directed the first and last assault, lasting from 0900 to 1300, upon the enemy's forward ranks: clinkers, dirt, grime, decay and erosion.

The WMC advance guard was victorious. The final "coup de grace" was the hanging of the dainty, flowered curtains. They waved in triumph from the opened windows. The strains of the "Wabash Cannonball" floated up from the bright and sparkling "Johns."

The victors sat down to a delicious turkey dinner, prepared by that fabulous gourmet and army chef, Jude Whitehead and her fantastic assistants. A meal truly fit for the king's army.

Thanks again to those who participated, sent food and love, from those of us who used and will be using the Lodge in the coming summer.

It's an old saying but very appropriate, "Many hands make light work". We missed many of our old friends and loved ones on this truly beautiful day. Ruth Holland and Judy Weatherbee added to the late afternoon moral support.

Those who received medals of honor, plus one old urinal, for outstanding contributions on the field of battle were: Marlene Austin, Michelle Holdaway, Camille Pierce, John Mason, Bob McCaig, Martin Knaphus, Larry Hoskins, Peter Hansen, Jim Wood, David Wood, Lawrence Vanderplas, Peggy Taylor (General's spouse), Bill and Sarah Yates and family, Dennis and Karin Caldwell, Jan Pilling, Diana Schoenberg and Joey, Leona Conn, Jude Whitehead and family, John and Grace Burton, Mary Manley, Mike Hendrickson (plus weapon carrier), Laurie Hatch, Lorraine Hatch, Elizabeth Liebergesell who sent reinforcements for the calorie lovers. The sun set, with a smiling red face on the beautiful Wasatch Mountains. It was indeed a wonderful and victorious day.

FOR SALE

Assorted climbing gear at significant reductions from retail price! All gear is brand new. Contact Dave Smith (355-8445).

WANTED

Small group of hikers to spend 7-14 days crossing Uintas in July. Interested individuals contact Ralph Sgamma at 328-1993.

A P P L I C A T I O N F O R M E M B E R S H I P

WASATCH MOUNTAIN CLUB
3155 Highland Drive
Salt Lake City, Utah 84106
363-7150

NAME (Print) _____ Telephone _____

Name of spouse (only if spouse wants membership also) _____

Address _____ ZIP _____

Occupation (Optional) _____

I hereby apply for membership in the Wasatch Mountain Club and enclose \$ _____ as my annual membership dues for the year _____, \$ _____ of which is for a subscription to the Rambler for the year and \$4.00 entrance fee. (If joining during January thru August, dues are \$6.00 of which \$5.00 are for a Rambler subscription -- Spouse dues (non-subscribing) are \$3.00 additional. If joining during September thru December, dues are \$3.00 of which \$2.50 are for a Rambler subscription -- Spouse dues (non-subscribing) are \$1.50 additional. Add \$4.00 entrance fee to each application, single or couple. Subscriptions are not deductible from dues. I (do) (do not) desire to receive the Rambler.

I have attended two Club activities in the past 12 months as required for membership such as hikes, ski tours, camping trips, rock-hound trips or work parties and have been recommended by two trip leaders who are Club members. Events such as lodge parties, winter socials, lectures, meetings, etc. are not activities qualifying for membership. I agree to abide by all the rules and regulations of the Club as specified in the Constitution and Bylaws as determined by the Board of Directors.

I am specifically interested in the items checked below:

Hiking _____ Ski Touring _____ Boating _____ Mountaineering _____ Cycling _____

Conservation _____ Writing and Editing _____ Organizing social activities _____

Lodge Work _____ Photography _____ Other _____

CLUB ACTIVITIES ATTENDED:

1. _____	Date _____	Signature of recommending Trip Leader _____
2. _____	Date _____	Trip Leader _____

(Note: The signature of a Director may be substituted for one Trip Leader.)

Signature of Applicant



REALTY - "The
greatest thing on
earth"

ARE YOU PAYING FOR A HOME YOU DON'T OWN?

ARE YOU UPGRADING YOUR LIVING QUARTERS
FOR A LANDLORD'S BENEFIT?

ARE YOU BEING SUBMERGED BY INFLATION?
(OR, DO YOU RIDE UP WITH IT?)

ARE YOU MISSING THE OPPORTUNITY TO DEDUCT
UP TO 90% OF YOUR HOUSING COSTS FROM YOUR
GROSS INCOME FOR TAX PURPOSES?

IF YOUR ANSWER IS AFFIRMATIVE AND YOU'D
LIKE A CHANGE--CALL SAM ALLAN.

"BLUE RIBBON REALTOR"

Office: 261-2791

Home: 942-3149

PHOTOGRAPHERS

We need more photographs to go with
stories in the Rambler. We prefer
prints, but we'll accept negatives
or transparencies.

By the way, what ever happened to
black and white photography? What
has become of all those junior Ansel
Adamses out there?

Anyway, gather up all those glossies,
black and white preferred, and get
them in. Be sure to include a brief
description of each shot. Thanks!

THE STAFF

WASATCH MOUNTAIN CLUB, INC.

3155 Highland Drive/Salt Lake City/Utah 84106

Vol. 54, Issue 7 (1977)

**SECOND CLASS
POSTAGE PAID
AT SALT LAKE
CITY, UTAH.
(NO. 053410)**

BOARD OF DIRECTORS

DENNIS CALDWELL	PRESIDENT	942-6065
PEGGY TAYLOR	SECRETARY	262-6524
STEWART OGDEN	TREASURER	359-2221
MARY MANLEY	BOATING	277-6307
WALTER HAAS	CONSERVATION	534-1262
KARIN CALDWELL	ENTERTAINMENT	942-6065
FRAN FLOWERS	HIKING	581-9083
JIM MASON	KAYAKING	355-3810
RANDY TAYLOR	LODGE	262-6524
MICHELLE HOLDAWAY	MEMBERSHIP	272-5450
JOHN MASON	MOUNTAINEERING	272-7558
PAUL HORTON	PUBLICATIONS	359-0260
LYMAN LEWIS	SKI TOURING	1-649-9632