

(? no do? (which is "on" at?)

APPARENTLY NO CHANGE -

SEPTEMBER, 1977

The Rambler



Official Publication of THE WASATCH MOUNTAIN CLUB

News and Notices

Cover: Photograph of Ostler Peak by
Dennis Caldwell.

Rambler Deadline

...for October is September 15.

Type (double-space) your articles/
schedules, indicate your name and
telephone number on your articles,
slides, prints, etc., and place your
slides or prints in protective fol-
ders. Mail to (or drop by):

WASATCH MOUNTAIN CLUB

3155 Highland Dr.

Salt Lake City, Utah 84106

ATTENTION: RAMBLER EDITOR

THE RAMBLER is published monthly
by the Wasatch Mountain Club, Inc.
3155 Highland Dr., Salt Lake City,
Utah 84106, telephone, 363-6150.
Subscription rates of \$5.00 a year
are paid for by membership dues
only. Prospective members may ob-
tain 2 free RAMBLERS (consecutive
issues) by contacting the Member-
ship Director. Direct correspon-
dence dealing with changes of add-
ress, mailing, etc., to the Member-
ship Director also. Second Class
postage is paid at Salt Lake City,
Utah. Publication Number is 053410.

Thanks....

...to John Moellmer, Leah Mancini,
Jan Paarmann, and Joanie Caucus
for help in editing and layout.

... to Leah Mancini, Joanie Caucus,
and Betty Hendricks for typing.

... to Camille Pierce for general
assistance and specific running
around.

... to Larry Hoskins for artwork.

... to Dale Green for mailing the
current issue.

The Wasatch Mountain Club is governed by a Board of Directors - 13 representa-
tives elected by the membership. Through the courtesy of Timberline Sports, our
mail is sent to their address, 3155 Highland Drive, for collection only. The Club's
telephone is located at O'Dell's Shoe Repair Shop, 425 South 8th West. This phone
is maintained as an answering service only by Life Members 'Pete' (O'Dell) Peter-
son and wife 'Pinky'. They take time out from their work to answer the phone and
relay incoming messages to the proper Director. The Petersons do not hold any
office, or attend Board meetings, or are they informed by the Board of official ac-
tions. If a trip leader cannot be contacted or is not specified, call the Director of
that department for information. The Board strongly desires to hear comments,
suggestions, inquiries, and criticisms concerning the operation of your Club.
Please feel free to phone any Director or write to the President. Names will be
withheld upon request, but anonymous letters will be disregarded.

Mountain Club business is conducted only on the first and third Wednesdays of each
month. At that time, and only at that time, is the mail opened, new membership
applications voted on, dues payments recorded, address changes made, and all
other business requiring board action conducted. All board members cannot attend
all board meetings and although an effort is made to fill in during a member's ab-
sence, some business is held for action until the next meeting.

Club Activities - September, 1977

HIKING INFORMATION: Members participating in easy or intermediate hiking (rating below 7.0) are generally not required to register with the leader. Unless otherwise stated, advanced hikes (rating above 7.0) do require registration. Adequate equipment is a must for advanced hiking. You can participate in these events only if you have demonstrated your ability on other hiking activities and if you have adequate and well broken-in boots with good Vibram-type

soles and suitable protective clothing. Special equipment, such as an ice axe, may be specified and you are expected to be able to handle such equipment. Remember that these restrictions are set for your safety as well as that of your fellow members.

Children are permitted on hikes with a rating of less than 3.0; however, permission of the leader is required on hikes with a rating between 3.0 and 5.0.



- | | |
|------------------------------|--|
| September 3-5
Sat. - Mon. | LODGE AVAILABLE for WMC members for the Labor Day weekend. A host is needed. Call Randy Taylor at 262-6524 for details. |
| September 3-5
Sat. - Mon. | WIND RIVER MOUNTAINEERING HIGH CAMP. We will return again to the Cirque of the Towers area, weather permitting. Numerous hikes and climbs of varying difficulty are available. The approach is 9 miles with some vertical. Register with the leader, John Mason, at 272-7558. |
| September 3-5
Sat. - Mon. | HELLS BACKBONE TO DEATH HOLLOW. This should prove to be a fantastic holiday backpack into some rugged country. Call Leader Bill Yates for details and registration, 723-3853. |
| September 3-5
Sat. - Mon. | ESCALANTE BACKPACK. A beautiful hike into one of Utah's treasured corners. Since much of the hiking is done in the water this is a pleasant way to spend a hot weekend. Call Leader Trudy Healy, 583-3411, or Fran Flowers, 581-9083, by Tuesday evening, August 30. |
| September 3
Saturday | DROMEDARY - LAKE BLANCHE. El. 11,107. Rating: 10.5. Intermediate hikers may come along and stop at the lake. All others be prepared for a good scramble. The final approach to the summit is to be accompanied by a personal narration on the evils of condominiums and other sinister influences on the Wasatch Range. Meet at the mouth of Big Cottonwood Canyon at 7:00 a.m. Leader: Alexis Kelner, 359-5387. |
| September 4
Sunday | PFEIFERHORN. El. 11,326. Rating: 10.0. Another chance to do this great peak. Meet at the mouth of Little Cottonwood Canyon at 8:00 a.m. Leader: Andy Schoenberg, 466-6531. |

- September 5
Monday
DEVILS CASTLE. El. 10,920. Rating: 3.5. This is one of the most exposed sections of ridge in the Wasatch. If the exposure is more than you want to tackle, come anyway and stop off at Sugarloaf. Both peaks afford a pleasant panorama of Albion Basin. Call Leader Carl Bauer for details, 355-6036. The leader needs a ride.
- September 5
Monday
CACHE VALLEY CENTURY BICYCLE TOUR. A moderate 100-mile tour. Come ride and participate in the Wellsville City Founders Day Celebration. There will be a Sag Wagon and a LAW patch supplied for your \$2.00 fee. Meet at 7:30 a.m. at the Wellsville City Park in the center of Wellsville, Utah. The grocery store in Swan Lake, Idaho (the halfway point where we will turn and go back) will be open. Leader: Richard Hanson (LAW), 255-6730.
- September 8
Thursday
EVENING CLIMBING AT STORM MOUNTAIN.
- September 10
Saturday
MT. OLYMPUS NORTH FACE. El. 8,959. Rating: 8.0. The north face of Olympus features some tough, steep areas and exposed scrambling. It is an interesting and worthwhile hike. Meet at the Movie (Olympus Hills Shopping Center, 3900 South and Wasatch Blvd.) at 8 a.m. Leader: Oscar Robison, 943-8500.
- September 10
Saturday
FAMILY PICNIC HIKE TO MOSS LEDGE. This is actually more of a picnic than a hike so really load up the basket with goodies and bring the kids for a fun lunch munch. Register with Andy Schoenberg at 466-6431.
- September 11
Sunday
EAST CANYON BICYCLE TOUR. A moderate trip (some steep hills) through the hills of Morgan County. Meet at railway depot in Morgan at 9:00 a.m. Bring lunch. Leader: Glen Silcox - La Strada, 581-1305.
- September 11
Sunday
MT. AGASSIZ. Rating: 7.0 A seldom done but interesting hike in the Uintas. Meet at the K-Mart parking lot by the Regency Theater at 7:00 a.m. Leader; Mike Hendrickson.,278-9856.
- September 11
Sunday
BEAR TRAP FORK. Rating: 5.0 We will go up Mill D, cross the ridge, pass Desolation Lake and descend Bear Trap Fork. Meet at the mouth of Big Cottonwood Canyon at 8:00 a.m. Leader: Elmer Boyd, 969-7814.
- September 15
Thursday
EVENING CLIMBING AT STORM MOUNTAIN.

- September 16-19
Fri. - Mon. CATARACT CANYON RAFT TRIP. This advanced trip involves three days of flat water floating and one day of sheer terror through the Cataract rapids. Shouldn't be quite so scary this year with the low water. To sign up, send your \$20 deposit (payable to WMC) to Bill Viavant, 218 Iowa Street, Salt Lake City, Utah 84102. Phone 532-4289 for more information.
- September 17
Saturday PARK CITY RIDGE RUN. El. 10,000. Rating: 7.5 Don't let the word "RUN" get to you. This is a pleasant hike along the ridge bordering Park City. Meet at the Movie (Olympus Hills Shopping Center) at 8:00 a.m. Leader: John Riley, 485-2567.
- September 17
Saturday TWIN PEAKS - BROADS FORK. El. 11,330. Rating: 10.5- 5.0. Those who don't care to subject themselves to the mercy of the Twins may stop at the swamp in Broads Fork while the others go on to the peaks. Call leader; Carl Bauer for details. 355-6036. He will be needing a ride.
- September 17
Saturday CHAMBER MUSIC AT THE LODGE. We have recruited a cross-section of amateur musicians affiliated with the club and are looking forward to an evening in their company. Players and listeners alike are most welcome to this event which will start at 8:00 p.m.. Refreshments will be available at a modest cost.
- September 18
Sunday SOUTH WILLOW LAKE (STANSBURYS). Rating: 4.0. An enjoyable hike in this seldom visited area. Meet at Simpson Ave. and 13th East at 8:00 a.m. Leader: George Healy, 583-3411.
- September 18
Sunday MULE HOLLOW WALL GOURMET CLIMB. This 500 foot wall offers F4, F5 and F6 climbing on several parallel routes. We will top off the climb with a mid-afternoon gourmet lunch on top. Call the leader for information and registration. Leader: Bonnie Baty, 532-5598 (home) or 581-3483 (work).
- September 18
Sunday NORTH THUNDER MTN. VIA SAM THOMAS GULCH. El. 11,150. Rating: 11.0. The plan is to ascend the peak via Sam Thomas Gulch and return via Hogum Fork. You'll need to be in good shape for this one. Register with leader Sam Allen at 261-2791 between 10:00 a.m. and 5:00 p.m.
- September 22-25
Thurs. - Sun. DESOLATION CANYON RAFT TRIP. Hopefully there will still be some water in the Green River for this trip. This is an intermediate trip and you must have had experience on one previous raft trip. We need a trip leader for this one. To register, send your \$20 deposit (payable to WMC) to Mary Manley, 3631 South 23rd East, Salt Lake City, Utah 84109. Phone 277-6307 for more information.

- September 22
Thursday
EVENING CLIMBING AT STORM MOUNTAIN.
- September 24
Saturday
NEPHI CENTURY BICYCLE TOUR. A moderate-to-difficult ride through Juab and Sanpete counties. Meet at 7:30 a.m. in Nephi City Park. For a \$2.00 fee a Sag Wagon and a LAW Patch will be provided along with a memorable ride. Leader: Glen Silcox - La Strada, 581-1305.
- September 24
Saturday
ANNUAL WOOD GATHERING PARTY begins at 9:00 a.m. at the lodge. We will scour the hills for another winter's supply of firewood. Anyone with a chainsaw, pick-up truck, sledge hammer, or splitting wedges is especially invited. FREE lunch and beverages will be provided, and the lodge will be open Saturday night for overnights. For additional information, please call Paul Horton at 359-0260.
- September 25
Sunday
BRIGHTON RIDGE RUN. El. 10,795. Rating: 8.0. This is a repeat of this popular hike which features lots of up and down. Meet at the mouth of Big Cottonwood Canyon at 7:30 a.m. Leader: Fran Flowers, 581-9083.
- September 25
Sunday
MT. AIRE. El. 8,620. Rating 3.0. We will approach the peak from Elbow Fork. This trail is not over long, but does have a steep section. Please call Fran Flowers at 581-9083 for meeting instructions.
- September 27
Tuesday
BIG COTTONWOOD HISTORICAL ASSOCIATION MEETING. Silver Fork Lodge at 7:30 p.m. Call Elmer Boyd, 299-7814 for details.
- September 29
Thursday
EVENING CLIMBING AT STORM MOUNTAIN.
- September 30
Friday
END OF SUMMER RITES AT AUDREY STEVEN'S HOUSE. All WMC members and friends welcome. Slides and prints of this summer's mountaineering high camps will be featured. BYOL and POTLUCK; bring a hot dish or salad or dessert. Serving at 7:30 p.m. Turn off I-80 at Parley's Summit and follow the "Stevens" cairns.
- October 1
Saturday
MT. NEBO. El. 11,928. Rating: 9.0. Mt. Nebo is the highest peak in the Wasatch Range and lies approximately 70 miles south of Salt Lake. Call leader Carl Bauer for details at 355-6036. He will need a ride.
- October 1
Saturday
AMERICAN FORK TWINS FROM ALTA. El. 11,489. Rating 9.0. The hike will begin at Alta. The return route is being left to the discretion of the leader. It should prove to be an exhilarating day for those who are in shape. Meet at the mouth of Little Cottonwood Canyon at 8:00 a.m. Leader: Jerry Horton. 262-8372.

- October 1-2
Sat-Sun
ORDERVILLE CANYON-ZIONS. We were rained out on the first try this year, so we'll try it once more. Tentative plans call for hiking Orderville on Saturday and possibly doing some short hikes on Sunday. This trip will be limited to 15 persons. Call Mike Hendrickson, 278-9856 for details and registration.
- October 2
Sunday
SILVER FORK-HONEYCOMB LOOP. Rating: 8.0 A pleasant hike in the Brighton area. We will go up Silver Fork, cross the ridge to Honeycomb Cliffs then-----then-----the rest of the details were lost in that mind boggling moment when the recruiter suddenly realized that here, after seven consecutive negative responses, someone was willing to lead a hike! Hooray! Meet at the mouth of Big Cottonwood Canyon at 8:30 a.m. Leader: Charles Keller, 467-3960.
- October 2
Sunday
TWIN LAKES PASS. Rating: 3.0 An easy hike past Twin Lakes up to the pass overlooking Alta. Meet at the mouth of Big Cottonwood Canyon at 9:00 a.m. Leader: Ann Wennhold, 466-3300.
- October 6
Thursday
EVENING CLIMBING AT STORM MOUNTAIN.
- October 8
Saturday
TRADITIONAL WESTERN PARTY. Consult the October Rambler for details but be sure to put this date on your calendar now. Location: The Lodge. Time: 8:00 p.m.
- October 8-9
Sat. - Sun.
WESTWATER CANYON. Will the drought be over by October? We can't predict water levels but this has proved to be an exciting trip in past years. Advanced level boaters only. Send your deposit of \$20 to Mary Manley, 3681 South 23rd East, Salt Lake City, Utah 84109. Her telephone is 277-6307.
- October 8-9
Sat-Sun
CLIMBERS FALL EVENT. This will be basically a camping trip in the Tetons (Leigh Lake) or Wind Rivers (Green River Lakes). Call the leader for information and registration. Leader is John Gottman, 359-4693 (home) or 328-8066 x359 (work).
- October 8-10
Sat-Mon
KOLOB CREEK. A backpack in the Zion area. We have no leader as of press time. For more information call Fran Flowers, 581-9083.
- October 15-18
Sat-Tues
THE MAZE-CANYONLANDS. This is an excellent trip into one of Utah's best wilderness areas. Since this trip involves some travel on four-wheel drive roads, the number of people allowed on this trip will depend on the number of vehicles available. Please register by October 12th. Call Mike Hendrickson 278-9856 for details and registration.

October 16
Sunday
10:00 a.m.

RAFTING WORK PARTY. This is our fall cleanup of all the equipment and we would like to see lots of people to help. The storage center is at 4317 South 3rd West, Unit #214. Phone Mary Manley at 277-6307 if you have any questions.



Upstairs to Twin Peaks

12 June 1977

by Andy Schoenberg

Sixteen hopeful hikers started on a cool Sunday morning to climb the 5000 foot Stairs leading to Twin Peaks. Most of us had never taken this more interesting and challenging route. You have to know the route, since the trail disappears after the first mile. Thereafter it's a scramble up steep rocky slopes. The route leads up the left side of the stream as those who tried the right soon discovered. On the right side steep wide slabs of smooth rock with downsloping footholds block the way. Even this late in the season the last 500 feet to the saddle of Stairs Gulch overlooking Broads Fork were snow covered. An ice ax as demonstrated by our leader, Oscar, in the picture was useful at this stage.



We relaxed and snacked on the top of Stairs Gulch--enjoying the spectacular view of Salt Lake valley and surrounding mountains. Phil and Sally Nelson were quite happy (see picture) being on this hike. It was a memorable way to say farewell. They have since moved to Berkeley, CA. We will miss them.

Four of the group decided to return via Broads Fork, the rest went on the remaining up, down, up rock scramble to Twins. This last section is suitable only for those that don't mind using their hands as well as their feet to get up a mountain.

Partial list of participants: Oscar Robison, leader; Phil and Sally Nelson, Hector Pearson, George Westbrook, John Slone, Clint Lewis, Evelyn Bruenger, Andy Schoenberg, George Mooney, Chris (?)

WHITE BALDY

July 10, 1977

by Leonie Davis

We started out at 9:00 a.m. and lost five people driving to the trail. The hike started out as a pleasant walk up the road to White Pine Lake with Audrey and Elmer pointing out many of the wildflowers for us. When we got to White Pine Lake we stopped to eat lunch, then started to climb White Baldy.

After scrambling over boulders for a few hours we made it to the top where a joyous celebration was held. Then, when we decided to descend, we split up; four of us went down by way of White Pine Lake and six of us went down by Red Pine Lake.

The six accidentally picked the easier trail. We climbed down in two hours and took a refreshing (and cold!) dip in the lake and waited for the other group to show up.

However, the people going down White Pine were having a hard time. The trail proved to be slippery and treacherous. It took them 5 hours without stopping.

Meanwhile our group was getting worried. Since it was getting dark we called a sheriff but the late group showed up safely about 8:15, so we called off the search and everybody went home tired but satisfied.

Participants: Elmer Boyd, Stan and Leonie Davis, Adrian and Audrey Stevens, Tom Dickman, Margaret Strickland, Clay, Howard, and others. (After the participant list went through the washing machine, this is the best I could do. Sorry "others".)



Brighton Ridge Run

July 23, 1977

An early start (6:30 a.m.) and bad weather apparently dampened everyone's spirits except for a small group of five ardent hikers. The morning was cool and wet after the rains of the night before. We followed the trail to Snake Creek Pass and then started up the ridge where we were promptly detoured on some steep scree slopes. After finding the trail again, the hike proceeded smoothly to Sunset Peak where late comer Joyce Sohler caught up with the group. The rest of the hike over Tuscarora, Wolverine, and Millicent was somewhat rushed by approaching clouds. After Millicent, some light rain was encountered on the way back to the cars. All in all, a very enjoyable hike with some spectacular weather.

Hikers: Ken Dougherty, John Van Hook, Christopher Ingalls, Joyce Sohler, and leader Mike Hendrickson.

Holubar
MOUNTAINEERING LTD.

**CLIMBING/BACKPACKING
SPECIALISTS SINCE 1946**

Exclusive Holubar Clothing & Gear
Bags, Tents, & Packs • U.S.G.S. Maps

**SEW-IT-YOURSELF KITS
RENTAL GEAR**

Call us for Expert Advice
4385 S. State St.
261-3071


Master Charge


AMERICAN EXPRESS

THE BOARD IN BRIEF

by Dennis Caldwell

Here is a brief resume of a few issues and decisions recently considered by the board:

1) The Rambler

As you may have noticed, the Rambler is under new management. We have lost the services of Joyce Sohler, whose long hours spent on behalf of this publication must now be allocated toward preparation for an advanced degree. Many thanks to Joyce for a fine job.

Currently we are operating with a committee headed by Paul Horton, whose job is to coordinate the various raw materials required by the Rambler, leaving the basic editing to John Moellmer and the layout to Larry Hoskins.

2) WMC and IRS

The club has officially filed with the IRS for status as a non-profit organization. If the application is approved, the informal procedures we have previously followed will have governmental sanction. (Being kosher with the IRS is a question not to be taken lightly. One never knows when a board member might wish to list the value of donated official papers as a deduction.) This will also affect the status of dues and donations to the club. Those who have been squeamish in the past would then be able to deduct their dues with impunity. We expect to hear preliminary word on this next month.

3) The Lodge

This venerable structure is slated for some extensive repairs including rewiring and new roofing. In addition we have recently learned that the fire insurance will increase to \$1400, which is one third of the dues. Accordingly, the board will have to make a decision which weighs the following considerations:

- i) How realistic is it to suppose that anything resembling the present lodge could be rebuilt from the insurance payment that would actually be rendered.
- ii) The ability to put the money saved toward making the lodge safer, such as the forthcoming rewiring job.
- iii) The necessity of greatly curtailing member use in favor of non-member rentals to defray the insurance premiums.
- iv) The horror of letting fifty years of tradition go up in smoke without a nickel to show for it.

More on this later.

4) Wasatch and High Uintas Clean-up

In cooperation with the Deseret News and other civic groups, the Club participated in a mountain trail clean-up campaign. One group went to Red Pine Lake in Little Cottonwood Canyon and another to Swift Creek on the south slope of

the Uintas. The operation really isn't as unpleasant as it sounds -- a bit like a treasure hunt. The general consensus we reached was that when people decide to litter they should not feel ashamed about it and wedge their refuse between some rocks off to one side; rather they should unashamedly throw it right down on the trail where it is easily spotted and removed.

5) Cooperation

WMC is a cooperative organization, which means the the \$6.00 dues you pay is only the first installment on one's obligations to the Club. (For example, the folder you are now reading costs at least this much a year to print and mail, aside from all the time spent by the members who produce it.) To those who have generously donated their time to the Club -- many thanks. If by chance you haven't gotten into the habit, the next time the press gang happens along, rise to the occasion. The perpetuation of your favorite services and events just might depend on it.

RAFTS for SALE

Campways Shoshoni, 16 ft. long by 7 ft. wide. Used one year and is in excellent shape. Price is \$575.00 firm.

Two old club boats, 10-man military style, several years old, still lots of miles left with a little care. Price is \$500.00 each.

If interested, please call Mary Manley at 277-6307.



F O L K D A N C E

Come, folk dance at Westminster College Thursday evenings - classes start September 22 - 7:00 to 8:00 p.m. Instructor: Margaret Strickland - 484-0595.

F I T N E S S C L A S S

Bob Everson will be teaching a class on Dynamic Fitness, Tuesdays and Thursdays starting September 6 at Westminster College from 5:30 to 7:30 p.m. Call Bob at 487-0029.

Chamber Music Evening



Music lovers, don't forget the Chamber Music Evening, September 17 at the lodge.

WHITE PINE LAKE

August 7, 1977 by Monica Liebergesell

When the going gets tough, the tough get going! This became our unspoken motto as we forged, or rather, fudged our way up to White Pine Lake. A beguiling fork in the road turned out to be our downfall and our upfall as we played "mountain goats" and also perfected our boulder hopping technique across a never-ending talus slope. But as always, the company of fellow hikers was delightful and for you yoga buffs, Vickie Nelson demonstrated well the benefits of deep breathing exercises as her conversation never flagged even on the steepest incline. When we finally reached the lake, the beautiful shimmering turquoise colour took our breath away, as did a fierce wind which seemed bent on depriving us of our well-deserved lunch. When we headed down -- some of us resorting to that time-honoured method of descent -- the seat of our pants, we scrambled once more over a boulder field and then hit the road. Carl's readjustment of the rating to an eight boosted our morale considerably.

To sum it up in the words of our leader: A leadership navigational error made necessary a "first ascent" of an uncharted road, some bushwhacking, and a mile of granite boulder hopping with an amended rating of at least 8.0.

The Valiant: Elizabeth, Monica and Mike Liebergesell, Calvin Giddings, Lynn Menlove, Karen Shaw, Vickie Nelson, Jan Redenbaugh, Fred Zoerner, Larry Hoskins, Katherine Dennett, Ruth Holland, Sandra and Dick Cummings, Carl E. Bauer.

For Sale - Two matching R.E.I. sleeping bags that zip together (right and left zippers) 3 lbs. down. They are in excellent condition - like new - \$90 each. Please call Marilyn at 487-4171 (work number) or after 5:30 p.m. at 268-2199.

BOX ELDER

June 19

by Trudy Healy

Thursday evening Tom drove up American Fork to cast around for the beginning of the western trail to Box Elder. This was time well spent: It saved 45 minutes of search time when the group set off to climb the mountain.

This trail to the saddle is ever so much more beautiful than the easterly approach, leading in easy zig-zags through stately coniferous forest and pleasant meadows. We marvelled at the immense size and weird shapes of fir and pines, and enjoyed a multitude of flowers.

A couple of daring girls, way ahead of everyone, followed the petering-out trail too high, and had an interesting time traversing slippery, slidy scree slopes to get to the saddle west of the peak. The rest of us sloged up easier terrain. From the saddle to the summit it's a battle to keep purchase on very loose stuff. The NE ridge would have been a whole lot more firm, scenic and interesting. Your choice: a pleasant lower trail plus lousy summit route, or hot, brushy approach plus fun to the top!?

We and thousands of ladybugs enjoyed the summit, with dramatic views from Lone Peak to Devil's Castle on the north, and reservoirs and Timpanogos on the south. (The copper mine was visible somewhere too.)

The ridge and slopes we had labored up were fun coming down. Randy especially, slid and bounded down scree and talus in record time. Everybody was elated and happy: a beautiful trip with a great leader.

Participants: John Van Hook, Randy Taylor, Margaret Strickland, Phyllis Robison, Kathy Kreuter, Ann Cheves, Penny Russell, Trudy Healy, John Veranth, Lois Shipway, Sue Ault, Reg Swartz, Karl and Jean Hendrickson, and Tom Stephens, leader.

The Teton Soggy Saga

July 1-4

by Audrey Stevens

Song I. Friday morning six early birds wound up the trail in warm sun to Amphitheatre Lake, then over the ridge to a campsite in the snow south of Teton Glacier. There we prepared summit packs which seemed to be as heavy as our backpacks! Then began an interminable vertical slog to some narrow bivouac ledges just below Molar Tooth. Our objective was the Grand, by way of the East Ridge.

The view was worth it all, including afterglow and moonrise over the Snake River Valley far below. However, throughout the night gusting winds tore at the tarps and rain pattered at times. The moon appeared fitfully from behind ragged, ominous clouds. The next morning, in fog and drizzle, the usual 16 options were considered. But of course the inevitable happened; we went back down.

A clearing trend developed and hopes rose to bag at least one peak that day. Teewinot--why not? We stepped carefully across the potholed glacier. This year's drought and extended warm weather eliminated the malleable snow cover and exposed old, consolidated, icy sheets and ridges, the bane of crampon-less hikers and climbers.

Lightning and thunder over Jackson drove us back down. Do two half mountains equal one whole ascent? we wondered, huddled under our rock shelter "kitchen". There was a pink-cloud sunset which inspired us to bounce down 1000 vertical feet of large boulders to the other WMC camp in the nether regions. After this happy hour, one wonders how we ever got back up.

Dreary torrents pounded away at our tents and spirits all night. Sunday morning the continuing fog, mist and rain closed our window on the Mt. Owen objective and completed the bummed-out feeling. We jogged through puddles to Lupine Meadows and home.

Participants: John Mason, Lew Hitchner, Bonnie Jean Baty, John Gottman, Martin Knaphus and Audrey Stevens.

Song II.

by Michael Treshow

On Saturday morning, while ascending the 17 giant switchbacks to Amphitheatre Lake, we looked apprehensively at the increasingly threatening skies and wondered at the progress of the intrepid six on the East Ridge. By the time we reached the lake, the clouds had all but closed above us. Yet, most of our party opted to grope their way up Disappointment Peak while the rest of us descended towards Delta Lake to make an early camp.

When the wet summit party finally sloshed out of the mist, they were greeted with warm hearts and strong spirits. By dusk the skies had dried sufficiently to enjoy free climbing on a huge "aid" boulder near camp. It was here the visitors

from above found us and watched with alarm as our more dauntless and ablest climbers dropped off the rock onto the soft wet grass beneath. Soon they all shared our active social hour returning to their higher camp only after accepting the challenge of summiting our local rock.

Sunday dawn broke with the gentle pounding of rain on our tents and though it quieted during breakfast, we still had misgivings about attempting Mt. Owens in the fog and pending rain. Only our Scottish member, John Sloan, feeling comfortably at home, and Diana Schoenberg, opted for this peak. The rest of us, drifting from camp with trepidation in pairs or threes attempted various "hiking" routes up Teewinot. Surprisingly, none of us found the summit although we explored some interesting possibilities--some roped and a few even with protection. We were back at camp in time to spend several anxious hours awaiting the return of the successful Mt. Owens party.

The weather improved during the day, and by the time we were ready to leave Monday, it was absolutely decent. So on the way out three parties did 4 or 5 pitches on the south face of Disappointment and Ernie Morrison and I did the peak over the hiking route.

In Jackson we tarried long enough to return to SLC at the classic old WMC time of 4 a.m., eager for the next trip.

Participants: Bill Shepard(leader), John Sloan, Diana Schoenberg, Greg Janiec, Bob McCaig, Roy Johnson, Ernie Morrison, Leroy Kuehl, Joe Hall, Bob Case, and Mike Treshow.

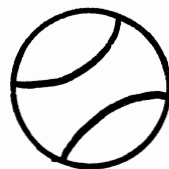
UINTAS - Ostler Peak Hike

A two and a half hour drive to Christmas Meadows on July 31, 1977 preceded the hike to Ostler Peak. A touch of frost was apparent on some of the meadow shrubbery. Twelve people started at 9:00 a.m. with wonderful crisp fall-like temperatures. Christmas Meadows' elevation is about 8800 feet and Ostler Peak is about 12,718 feet. The first 2,000 feet of elevation has easy to medium grades. The remaining elevation gain, as we did it, was scrambling and boulder hopping. This hike was a substitute for Tokewana and because of the scrambling deserves a little higher rating. Eight of the group made the peak and enjoyed an excellent view of much of the Uintas. Several times moose were sighted in the meadows along the way. Information relating to edible mushrooms was exchanged among the group.

The first eight of the following listed participants enjoyed the view from atop Ostler Peak: Dennis and Karen Caldwell, Diane Schoenberg, Bob McCaig, Chris Ingalls, Trudy Healy, Chuck Ranney, Milt Hollander, Bill Jones, Teresa Overfield, Camille Pierce, and Peg Achterman.



ATTENTION: Basketball players or people interested in playing. We are trying to find if there is enough interest in forming a team for a recreational league this winter. If interested, call Mike Hendrickson 278-9856



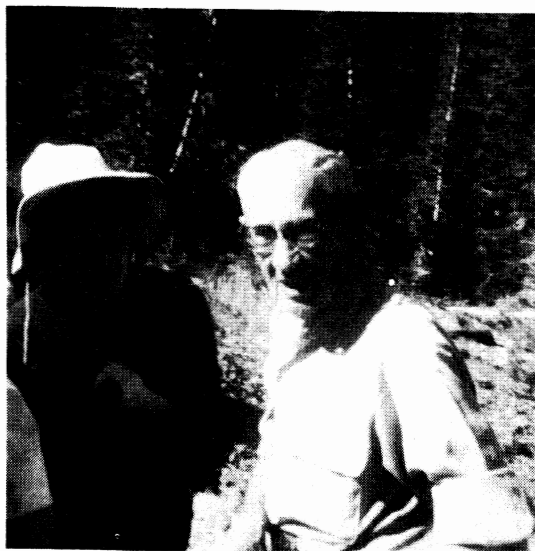
Lake Blanche - Sundial

July 24, 1977

by Carl E. Bauer

Threatening skies happily deferred their weeping discouragement, and even condescended a brief glimpse, from the lake, of the majestic sundial, before justifying our carrying of rain gear with a joyous benediction for the parched and thirsty land.

Participants: Jan Redenbaugh, Trudy Healy, Clayton Benton, Chris Ingalls, Betty Barberio, Joyce Sohler, Howard Wells, Dick Bojack, Mary Lou Rivera, Nadine Fishbeck, Gordon Seeling, Carl Bauer.



Carl E. Bauer while attending the White Pine Tour, a fine man we regard with affection.

Timpanogos Moonlight

July 30, 1977

by Carl E. Bauer

With a delayed start, and separation of the "fasts" and "less-sos" further augmented by flower conferences and a diversion at dusk on the Emerald Lake trail, the laggards, with the realization that July can become November above timberline, were content to savor the choice panorama from the saddle, where Chef Larry Swanson dismembered a delectable watermelon as the perfect offering for consolation and triumph.

Participants: Patty Lee Parmalee, Cassie Badowsky, Betty Barberio, Larry Swanson, Ken Dougherty, Jacob Tal, Adrian Stevens, Gail Baden, Howard Wells, Gale Dick, Dennis Dougherty, Paul Rubinfeld, Trudy Bach, Nancy Coombs, Art Hanson, Richie Calvin, Carl Bauer.



Kayaking is Crazy

Kayaking is crazy! Imagine being wedged into a little boat with wildwater and rocks all over.... After you learn a few tricks and practice a bit, it isn't so insane, in fact its terribly addicting. If you get into a boat and experience the river by the seat of your pants, just once, you'll be hooked. We know. We all were.

Drop by Timberline and take a kayak class, or chat about boats, accessories and rentals.

Timberline Sports

3155 Highland Dr. * 466-2101

MT. MILLICENT

July 9, 1977

Eleven enthusiastic hikers met early and promptly proceeded up Big Cottonwood to Brighton. The weather was clear and warm as the group hiked past Silver Lake, Twin Lakes and the ski lifts to the summit. After an enjoyable lunch on the summit, the group scrambled down the boulder field and started a new system of scoring the various aspects of boulder hopping. At the bottom, some headed down the canyon while others went to the Brighton Store for refreshments.

Hikers: Reg Swartz, Jim Travis, John Van Hook, Albertha Western, Larry Hoskins, Gert Kristiansen, Jim Wood, David Wood, Monica Liebergesell, Elizabeth Liebergesell, and leader Mike Hendrickson.



MOUNTAINEER SPORTS

University Store
207 So. 1300 East
582-0427

Trolley Square
East Bay
582-2338

MAYBIRD LAKES

July 17, 1977

by John Osgood

Convening at the mouth of Little Cottonwood Canyon at the delightfully cool hour of 6:30 a.m., our bright-eyed twelve took to the trail with celerity and began our hike which would take us up White Pine Trail to Maybird Creek and then to Maybird Lakes. With valley temperatures going to reach the century mark for the second time in two days, we were anxious to leave the heat behind, at least temporarily. Crossing Little Cottonwood Creek and treading as discreetly as we could, we bade good morning to numerous maraschino-eyed partygoers who were just waking up from the previous night's debauch. At the base of White Pine Trail our intrepid leader, Cathy Kreuter, passed out copies of Reg Swartz's directions for getting to Maybird Lakes (Reg having scouted the route the previous day and marked it with bread crumbs) and then volunteered to bring up the rear. The hike up was at a steady but leisurely pace. Conversation and nature flourished: topics of the former included the lovely cool morning, how pleasant was the Kennecott strike and wouldn't it please continue, the futility of Keynesian economics in a post-industrial nation, and the difficulty of raising children in an increasingly normless society; topics of the latter included hanging valleys and the glaciation of Little Cottonwood Canyon, the morphology of boulder fields and the flowers around us. Wildflowers were in bloom everywhere. Bluebells, Paintbrush, Columbine, Shooting Star, Green Gentian, Fireweed, beautiful Rosy Primula and more. Resident flower experts Elmer Boyd, Kathy Wallentine and daughter Elise fielded questions all day as each new glen and slope broached a new species. We were all the more florally learned at day's end.

White Pine Trail led us to Red Pine Trail which we crossed and then onto an old mining road. The mining road led us to a ridge which paralleled Maybird Creek. A few minutes more and we were at the Maybird Lakes, arriving at about 10:30. Twin jewels they were, nestled among boulders, amid sub-alpine fir and beneath the unmoving gaze of Pfeifferhorn's north face. Lunch was declared, tables were set, cheese and grapes made their way around. The water was irresistible as socks and shoes were doffed and bare feet plied the shallows and sponged along the shore. Time temporarily loosed its opprobrious hold as warm sun, cold water, blue sky and soft greenery all combined to soothe souls and mellow thoughts. Dozing, talking, laughing, sharing, chasing butterflies and wildflowers, we all felt privy to a richness which that very morning had not been. Too soon the call of the non-wild, that of the world which we were truly from, bid us return. Grudgingly we acceded. The trip down was like the trip up, only easier. As we descended the heat ascended, or so it seemed, and by the time we reached Little Cottonwood Creek, we knew that 100 degrees was not much farther down the canyon.

Trip Participants: Cathy Kreuter, leader, Jim Todd, John Van Hook, Joyce Sohler, Mike Hendricksen, Hannelore Janke, Kathy Wallentine, Elise Wallentine, Elmer Boyd, Jack Harry, Margaret Strickland, and John Osgood.

A P P L I C A T I O N F O R M E M B E R S H I P

WASATCH MOUNTAIN CLUB
3155 Highland Drive
Salt Lake City, Utah 84106
363-7150

NAME (Print) _____ Telephone _____

Name of spouse (only if spouse wants membership also) _____

Address _____ ZIP _____

Occupation (Optional) _____

I hereby apply for membership in the Wasatch Mountain Club and enclose \$ _____ as my annual membership dues for the year _____, \$ _____ of which is for a subscription to the Rambler for the year and \$4.00 entrance fee. (If joining during January thru August, dues are \$6.00 of which \$5.00 are for a Rambler subscription -- Spouse dues (non-subscribing) are \$3.00 additional. If joining during September thru December, dues are \$3.00 of which \$2.50 are for a Rambler subscription -- Spouse dues (non-subscribing) are \$1.50 additional. Add \$4.00 entrance fee to each application, single or couple. Subscriptions are not deductible from dues. I (do) (do not) desire to receive the Rambler.

I have attended two Club activities in the past 12 months as required for membership such as hikes, ski tours, camping trips, rock-hound trips or work parties and have been recommended by two trip leaders who are Club members. Events such as lodge parties, winter socials, lectures, meetings, etc. are not activities qualifying for membership. I agree to abide by all the rules and regulations of the Club as specified in the Constitution and Bylaws as determined by the Board of Directors.

I am specifically interested in the items checked below:

Hiking _____ Ski Touring _____ Boating _____ Mountaineering _____ Cycling _____

Conservation _____ Writing and Editing _____ Organizing social activities _____

Lodge Work _____ Photography _____ Other _____

CLUB ACTIVITIES ATTENDED:

1. _____	Date _____	Signature of recommending Trip Leader _____
2. _____	Date _____	Trip Leader _____

(Note: The signature of a Director may be substituted for one Trip Leader.)

Signature of Applicant



REALTY - "The
greatest thing on
earth"

ARE YOU PAYING FOR A HOME YOU DON'T OWN?

ARE YOU UPGRADING YOUR LIVING QUARTERS
FOR A LANDLORD'S BENEFIT?

ARE YOU BEING SUBMERGED BY INFLATION?
(OR, DO YOU RIDE UP WITH IT?)

ARE YOU MISSING THE OPPORTUNITY TO DEDUCT
UP TO 90% OF YOUR HOUSING COSTS FROM YOUR
GROSS INCOME FOR TAX PURPOSES?

IF YOUR ANSWER IS AFFIRMATIVE AND YOU'D
LIKE A CHANGE--CALL SAM ALLAN.

"BLUE RIBBON REALTOR"

Office: 261-2791

Home: 942-3149

Thanks for the generous contributions
to the September RAMBLER. It's an
interesting and satisfying job to
bring the RAMBLER out each month.
Come on over and try your hand at
editing and/or typing.

Many fine photographs have been given
to us to use, and we appreciate
receiving them. When we have used
the photos, we will return them to
you if you wish.

John Moellmer
581-1817

WASATCH MOUNTAIN CLUB, INC.

3155 Highland Drive/Salt Lake City/Utah 84106

Vol. 54, Issue 8 (1977)

SECOND CLASS
POSTAGE PAID
AT SALT LAKE
CITY, UTAH.
(NO. 053410)

BOARD OF DIRECTORS

DENNIS CALDWELL	PRESIDENT	942-6065
PEGGY TAYLOR	SECRETARY	262-6524
STEWART OGDEN	TREASURER	359-2221
MARY MANLEY	RAFTING	277-6307
WALTER HAAS	CONSERVATION	534-1262
KARIN CALDWELL	ENTERTAINMENT	942-6065
FRAN FLOWERS	HIKING	581-9083
JIM MASON	KAYAKING	355-3810
RANDY TAYLOR	LODGE	262-6524
MICHELLE HOLDAWAY	MEMBERSHIP	272-5450
JOHN MASON	MOUNTAINEERING	272-7558
PAUL HORTON	PUBLICATIONS	359-0260
LYMAN LEWIS	SKI TOURING	1-649-9632