



WASATCH MOUNTAIN CLUB

# The Rambler

AUGUST, 1978

# Wasatch Mountain Club

Persons wishing to become members of the WASATCH MOUNTAIN CLUB should request, either by telephone or in writing, an application form from the Club's Membership Director. Upon such notification, prospective members will receive 2 free, consecutive issues of the Rambler, the club's official publication, and a full application form with instructions for joining.

Dues are as follows: \$10.00 Regular (single), \$15.00 Spouse (double) and a \$5.00 initiation fee.

## BOARD OF DIRECTORS

DENNIS CALDWELL	PRESIDENT	942-6065
PEGGY TAYLOR	SECRETARY	262-6524
STEWART OGDEN	TREASURER	359-2221
MARY MANLEY	RAFTING	277-6307
WALTER HAAS	CONSERVATION	534-1262
KARIN CALDWELL	ENTERTAINMENT	942-6065
FRAN FLOWERS	HIKING	581-9083
MIKE HENDRICKSON	LODGE	278-9856
CAMILLE PIERCE	MEMBERSHIP	487-3180
JOHN MASON	MOUNTAINEERING	942-5033
ALEXIS KELNER	PUBLICATIONS	359-5387
LYMAN LEWIS	SKI TOURING	1-649-9632
JIM MASON	KAYAKING	582-7619

THE RAMBLER is published monthly by the WASATCH MOUNTAIN CLUB, Inc. 3155 Highland Dr. Salt Lake City, Utah 84106. Tel. (801) 363-7150. Subscription rates of \$6.00 per year are paid for by membership dues only. Second Class Postage is paid at Salt Lake City, Utah. Publication Number is 053410.

## CHANGE OF ADDRESS:

This publication is not forwarded automatically by the Post Office. Changes of address, and other direct correspondence regarding The Rambler, its mailing, etc. should be directed to the Membership Director.

## STAFF:

Alexis Kelner, Managing Editor

Deadline for the Rambler is the 15th. of each month.

Type (double space) your articles schedules, indicate your name and telephone number on your articles, prints, etc. Mail to (or drop by):

WASATCH MOUNTAIN CLUB  
3155 Highland Drive  
Salt Lake City, Utah 84106

or ALEXIS KELNER  
1201 First Avenue  
Salt Lake City, Utah 84103

On mailed matter indicate ATTENTION--RAMBLER EDITOR.

## THANKS:

# Club Activities August, 1978

---

HIKING INFORMATION: Members participating in easy or intermediate hiking (rating below 7.0) are generally not required to register with the leader. Unless otherwise stated, advanced hikes (rating above 7.0) do require registration. Adequate equipment is a must for advanced hiking. You can participate in these events only if you have demonstrated your ability on other hiking activities and if you have adequate and well broken-in boots with good Vibram-type

soles and suitable protective clothing. Special equipment, such as an ice axe, may be specified and you are expected to be able to handle such equipment. Remember that these restrictions are set for your safety as well as that of your fellow members.

Children are permitted on hikes with a rating of less than 3.0; however, permission of the leader is required on hikes with a rating between 3.0 and 5.0.

---

August 3  
Thursday

THURSDAY EVENING HIKE. Elbow Fork to the Terraces. Meet at 7 p.m. at the entrance to the Terraces picnic area. Drive 4.6 miles up Millcreek Canyon from Wasatch Blvd. to the Terraces sign. Park along the road, leaving room for traffic and those who will park next to you. Do not park in the picnic area, which is locked at 8 p.m. Leader: Dale Green, 277-6417.

August 3  
Thursday  
August 5  
Saturday

EVENING CLIMBING AT STORM MOUNTAIN.

LAKE BLANCHE CLEAN-UP HIKE. Bring backpacks and garbage bags and help clean up the accumulation of trash which detracts from the beauty of this favorite spot. We plan to hike Sundial first, then do the clean-up on the way down. Meet at the mouth of Big Cottonwood Canyon at 8:00 a.m. Leader: Walter Haas, 534-1262.

August 5-6  
Saturday-Sunday  
August 6  
Saturday

ALPINE CANYON RAFT TRIP. X-Rated, Adults Only. Anyone interested in this trip should contact the leader, Larry Peterson,

ALEXANDER BASIN TO BOWMAN FORK. Rating: 7.0. A good intermediate hike. LEADER NEEDED. Call Fran Flowers, 581-9083.

---

COVER: On the summit of the Grand Teton, summer—1936. Left to right: June Whitehead, Homer Collins, "Chick" Springer, O'Dell (Pete) Petersen, Ida Chittock, and Wally Watson. See article on page 10.

- August 10  
Thursday THURSDAY EVENING HIKE. Greens Basin. Drive 9.0 miles up Big Cottonwood Canyon from Wasatch Blvd. to the "Meeting of the Glaciers" sign on the north side of the road. Meet at 7 p.m. Leader: Dale Green, 277-6417.
- August 10  
Thursday EVENING CLIMBING AT STORM MOUNTAIN.
- August 11-13  
Friday-Sunday WIND RIVERS BACKPACK. This will be a three-day trip to the Cirque of the Towers via Texas Pass. You may expect to cover about ten miles per day. Register with leader Roger Rollins, 268-3229.
- August 12  
Saturday OLD TIMER'S PARTY. The lodge in Brighton will be open from 2 p.m. Leave the heat of the valley behind and come up to the cool and refreshing mountains for some hiking and reminiscing together with your old friends. This will be a pot luck affair, so bring your own steak or hamburger plus whatever else you feel like having. Plates and utensils will be provided and beverages will be available at cost. Don't forget your old slides and memorabilia.
- August 12-13  
Saturday-Sunday ALPINE CANYON KAYAK TRIP. Intermediate kayaking on the Snake River near Jackson, Wyoming. Call Marty Risley, 566-2108, for details.
- August 12  
Saturday MINERAL FORK TO LAKE BLANCHE. Rating: 6.0. A nice intermediate hike in Big Cottonwood Canyon. Meet at the mouth of Big Cottonwood Canyon at 8:00 a.m. Leader: Clint Lewis, 295-8645.
- August 13  
Sunday SUGARLOAF. Rating: 3.5. A fine beginner hike in Albion Basin. Meet at the mouth of Little Cottonwood Canyon at 9 a.m. Leader: Joyce Sohler, 272-2624.
- August 13  
Sunday TWIN PEAKS FROM STAIRS GULCH. Rating: 10.5. An advanced hike featuring lots of scrambling. Meet at the mouth of Big Cottonwood Canyon at 7:30 a.m. Leader: Diana Schoenberg, 943-9857.
- August 17  
Thursday THURSDAY EVENING HIKE. Lake Solitude. Meet at 7 p.m. at the start of the loop road in Brighton at the head of Big Cottonwood Canyon across from the Brighton Store. Leader: Dale Green, 277-6417.
- August 17  
Thursday THURSDAY EVENING CLIMBING AT STORM MOUNTAIN.
- August 18-22  
Friday-Tuesday TETON WILDERNESS BACKPACK. The route will be from the Snake River to the Yellowstone River via Two Ocean Pass. Plenty of wildlife and exceptional scenery can be expected. Register with leader Sam Allan by Wednesday, August 16, 942-3144 (home) and 261-2791 (work).
- August 18  
Friday MOONLIGHT HIKE. Gobblers Knob From Butler Fork. Meet at the mouth of Big Cottonwood Canyon at 6:30 p.m. Leaders: Dennis and Karin Caldwell.

- August 19  
Saturday LAKE HARDY FROM ALPINE. Rating 7.0. A beautiful shady trail leads to this lovely lake. Meeting place: Alpine X-road (from I-15, take Timpanogos Cave Exit. Go into American Fork Canyon to town of Alpine and meet at the X-roads). Leader: Gerry Powelson, 1-756-3004.
- August 19  
Saturday TWIN LAKES PASS (BRIGHTON). Rating: 3.5. Meet at the mouth of Big Cottonwood Canyon at 9:00 a.m. Leader: Dennis Zwang, 278-8273.
- August 20  
Sunday WESTWATER KAYAK TRIP. Intermediate-advanced kayaking on the Colorado River. Call Randy Frank, 466-6277, for details.
- August 20  
Sunday DESERET PEAK. Rating: 8.0. This is the highest peak in the Stansburys. Meet at Simpson Avenue and 13th East--parking lot at 7:00 a.m. Leader: Trudy Healy, 583-3411.
- August 24  
Thursday THURSDAY EVENING HIKE. Bowman Fork. Meet at 7 p.m. at the entrance to the Terraces picnic area, 4.6 miles up Millcreek Canyon (3800 South) Do not park in the picnic area as the gate is locked at 8 p.m. Leader: Dale Green, 277-6417.
- August 24  
Thursday THURSDAY EVENING CLIMBING AT STORM MOUNTAIN.
- August 26-27  
Saturday-Sunday ALPINE CANYON KAYAK TRIP. Intermediate. Call Jim Mason, 582-7619, for details.
- August 26-27  
Saturday-Sunday ALPINE CANYON FAMILY RAFT TRIP. Trip leader: Chuck Ranney, 363-7285.
- August 26  
Saturday SPANISH FORK PEAK. Rating: 9.0. A good advanced hike. There are a lot of rattlesnakes in this area, so be alert! Meet at Fashion Place Mall at 6:30 a.m. Leader: Sam Allan, 942-3149 (home) or 261-2791(work).
- August 26  
Saturday RED PINE CLEAN-UP HIKE. Smile as you do your part to help keep our canyons clean and inviting while also having a great time! Bring backpacks and garbage bags. Meet at the mouth of Little Cottonwood Canyon at 8:30 a.m. Leader: Andy Schoenberg and sons, 943-9857.
- August 26-27  
Saturday-Sunday KINGS PEAK. At 13,528 feet, Kings Is Utah's highest peak. . Call leader, Caine Alder, 943-1238, for details.
- August 27  
Sunday SUNRISE PEAK. Rating: 10.5. This peak features an exposed scramble. Meet at the mouth of Big Cottonwood Canyon at 7:00 a.m. Leader: Greg Janiec, 272-5488.
- August 27  
Sunday DESOLATION LAKE VIA MILL D NORTH. Rating: 4.0. A fine beginner to intermediate hike. Meet at the mouth of Big Cottonwood Canyon at 8:00 a.m. Leader: Joy Ray, 272-3149.

- August 27  
Sunday  
BIG BASH AT BRIGHTON. Hikes galore and char-broiled de luxe hamburgers are the offerings at this event, which will help finance the next step in the renovation of the lodge. See centerfold for details.
- August 31  
Thursday  
THURSDAY EVENING HIKE. Stairs Gulch. Meet at 7p.m. at the "Storm" Mountain Quartzite" geology sign 2.9 miles up Big Cottonwood Canyon from stop light. This is the last evening hike of the season. Bring refreshments for a small party at the stopping place. Leader: Dale Green, 277-6417.
- September 1-4  
Friday-Monday  
LABOR DAY BACKPACK. Wire Pass to Buckskin Draw (conditions permitting). We may have to schedule an alternate trip. Contact Sam Allan, 942-3149 (home) or 261-2791 (work), for details.
- September 1-4  
Friday-Monday  
SAWTOOTH MOUNTAIN BACKPACK. We haven't been to the Sawtooth's (Sawteeth?) for a while, so if there is no early snow we should have a great weekend. Register with leader Sam Allan by Wednesday, August 30, 942-3149 (home) or 261-2791 (work).
- September 2-4  
Saturday-Monday  
WIND RIVERS MOUNTAINEERING HIGH CAMP. The exact destination of this trip has not been chosen yet, but it will be interesting. Call the leader for information and registration. Leader: Lew Hitchner, 364-0728.
- September 2-4  
Saturday-Monday  
SOUTHERN IDAHO KAYAK TRIP. Intermediate-advanced kayaking on the SF Boise and SF Payette rivers. The water should be low requiring lots of maneuvering around rocks. Call John Herbert, 1/745-3029, for details.
- September 2  
Saturday  
MT. TIMPANOGOS. Rating: 11.0. One of our favorites! Call leader Elmer Boyd, 969-7814, for details. He will need a ride.
- September 2  
Saturday  
WHITE PINE LAKE. Rating: 5.0. Meet at the mouth of Little Cottonwood Canyon at 8:00 a.m. Leader: Shelly Hyde, 583-0974.
- September 3  
Sunday  
AMERICAN FORK TWINS FROM ALTA. Rating: 7.5. Most of this hike is one big exposed scramble. Meet at the mouth of Little Cottonwood Canyon at 8:30 a.m. We have no leader yet but the hike will go. The hike will last till 2 or 4:00 p.m., depending upon the leader's preference as to a return route.
- September 4  
Monday  
MAYBIRD LAKES. Rating: 3.5. A pleasant retreat from the city. Call leader Carl Bauer, 355-6036, for details. He will need a ride.
- September 10  
Sunday  
WESTWATER KAYAK TRIP. Intermediate-advanced, one-day run. Call Chuck Denton, 1/782-5514, for details.
- September 16-17  
Saturday-Sunday  
WESTWATER KAYAK TOUR. Overnight tour through the canyon. Call Jim Mason, 582-7619, for details.

# News and Notices

## LODGE REGULATIONS

During winter, park in the LDS Church parking lot to leave the rest of the parking area free for snow removal. Do not park in front of Mt. Majestic Motel.

Children should not be able to run up and down stairs, nor jump on furniture, bang windows, climb out of windows, play on fire escapes, or climb on outside of building.

The noise level should be kept down. Please have children in bed or playing quietly at a reasonable time at night. If parents cannot or will not control their children, they will be asked to leave.

No dogs in the lodge! This is city water department regulation and applies to the entire Big Cottonwood watershed area.

Burn all burnable trash, plates, cups, paper towels, burnable food and please mash cans if possible. All garbage must be hauled down.

The holding tank for the water is very limited. Please do not let any but the very necessary water run down the drain. Please dump dish water, personal washing water, etc., outside. It helps if a bucket is kept under the faucet in order to catch water drips, etc. Dump the water in the bucket when leaving.

Please, if possible, do not let your cooking dishes sit. Please wash up before leaving on hikes, etc., as your dishes can be in other people's way.

Please remember that the work party is done by just a few members, so please let's try to keep the upkeep to a minimum and not have it accumulate for the work party.

Please do not let children abuse ping pong balls or damage rackets.

All lodge users are responsible for cleaning up the lodge before they leave.

## Lodge Work Party

The annual spring clean-up and fix-up work party was again a great success thanks to the efforts of enthusiastic, hardworking volunteers. Without the help of these fine people, the lodge would never survive from year to year.

Participants: Clay Benton, Duncan Foley,

Bob Bamford, Sandy and Dick Cummings, Jude Whitehead (a great meal!), Chris Ingalls, Lynn Christensen, Nelson Pflieger, Ruth Holland, Larry Hoskins, Leah Mancini, Mike Daley, John and Grace Burton, Bill Duran, Carol Greely and Barbara Berntson.

## FROM THE HIKING DIRECTOR

It was announced at the last board meeting that the Forest Service is planning to restrict the size of recreation groups using the areas in the near future. The proposed limit will initially be 20 persons per group. As you know, we have been trying to cut the size of our groups to about 15 persons, by offering more hikes and repeating the most popular ones. However, the number of participants on the second Lone Peak hike (40) and on the second Pfeifferhorn hike (28) indicates to me that offering these and other very popular hikes three or four times each spring would not be unreasonable.

Since we know such restriction is inevitable, it was decided that it would be more fitting for our organization to cooperate now instead of waiting to be told officially at a later date.

This will necessitate mandatory registration for several hikes which are known to draw a lot of people.

My personal efforts will be directed towards a limit of about 15 on all hikes, but these efforts will be mainly keeping track of the numbers showing up for the hikes and scheduling sufficient hikes and repeat hikes in the hopes that the numbers problem will take care of itself without having to put leaders in the position of turning anyone away. But please bear in mind that hikes requiring registration will be limited to the number specifically requested by the leader, or as in the case of Lone Peak, Timpanogos, Pfeifferhorn and other very popular hikes, to make sure that the group does not exceed 20 persons.

ON ALL HIKEs WITH LIMITED PARTICIPATION, MEMBERS WILL HAVE PRIORITY!!!

Thanks to all who have called to volunteer as leaders. I've had reports that some people have indicated that they would be willing to lead, but that on one has asked them. Please let me know who you are. I just don't have the time to go through the entire membership list to "discover" you.

### Notice

Don't forget that our annual Chamber Music Concert will be held on September 9. Now is the time to brush up on your technique and go through your repertoire. Please contact Karin Caldwell (942-6065) for further details.





On the summit of the Twins. Photo by A. Kelner.  
See article by Trudy Healy on page 16.

# TRIP Talk talk talk talk

EDITOR'S NOTE: For the editor of THE RAMBLER last month proved especially rewarding. It started early in the month with a personal delivery, by O'Dell Petersen, of a somewhat belated trip write-up—neatly typed. A few days later, Club founder Claude Stoney arrived with a historical article on the first ascent of Angel's Landing. In the mail were waiting many excellent articles on club outings of the past month. For those who have submitted Wind River articles and photographs many thanks. Don't despair at not seeing them in print this issue. Plans are being made for an all-Wind River Special for October. Again, Thanks!

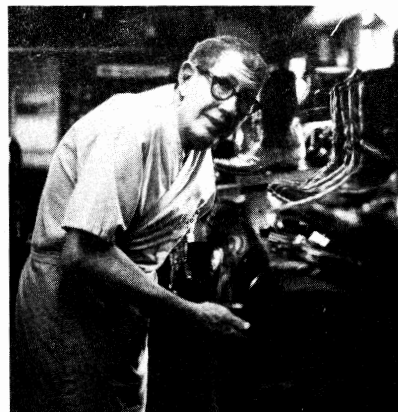
# The First W.M.C. Climb of the Grand Teton

by O'Dell Petersen



"On the Glacier"

Those who would like to meet 'in person' the author of this article, as well as other 'old timers' who, in many, many ways have shaped the Club to what it has become today, are invited to attend the annual "Old Timer's Party" to be held August 12. See Schedule for details.



Life member (since 1928) O'Dell Petersen. To many Club members O'Dell is the familiar voice at the other end of the WMC phone. He operates a shoe repair service on 900 West St.

### "Walking Not Allowed"

Homer Collins, then President of the Club, was the first to conceive the idea of a climb of the Grand Teton by the Wasatch Mountain Club, and full credit should be given him for a soul-satisfying experience

As no one of the Club had made a previous ascent of this peak, our main problem lay in obtaining a guide. Pia Mottes, who was the hostess on the trip for the "stay in camps" who didn't care to tackle the peak, having a connection with the National Parks Department, secured one of the rangers to act as guide on the proposed trip. The trip was set for July 23, 24, 25 and 26, 1936, with Homer Collins in charge of the group.

We left Salt Lake City the night of the twenty-third and drove all night. Early morning found us leaving the dirt road along the hoeback and heading

toward Jackson. It was along this stretch that we got the first glimpse of the Grand Tetons. It left us all breathless and with doubts as to whether we could accomplish the climb to the top of this beautiful mountain. It seemed a million miles high, however upon reaching the Ranger Station we found it to be 13,767 feet. As we were all tired and hungry, we satisfied our hunger and continued on into the Jenny Lake Camp where we were met by Wally Watson, who was to be our guide. Wally had never climbed the mountain before, but he had written instructions and a map which he had obtained from a friend who had climbed the Grand. The instructions and map were very accurate and quite easy to follow. Arrangements were soon made for pack horses and we gratefully crawled into our sleeping bags for a short nap before starting our trek to the base camp.



Photos from  
the  
Homer Collins  
scrapbook.

The first half mile above base camp led us over numerous moraine deposits which are composed of metamorphic rock, the chief composition of the Teton range. After an hour on these moraines, we arrived at the base of the Middle Teton glacier. The glacier at this time of the year is generally small, but being a new sight for most of us, it seemed unusually large and made climbing very tricky.

We posed like seasoned mountaineers for several photographs and then resumed our climb, which after an additional hour, found us on the first saddle at the elevation of 11,500 feet. From here on the climb was very different from anything we had experienced in the Wasatch range.

The route led us up a steep couloir. We all felt very important when we had our first chance to make use of the rope. Although it was not necessary, it added spice to the climb and we did not hesitate to make use of it. This couloir contained much loose rock and those in the rear were constantly bombarded by falling stones.

There was a light rain when we reached the second saddle, at an elevation of a little under 13,000 feet. From here we could look down to the Grand Teton glacier, which lay a sheer 3,000 feet below us.

Because of the added danger of the slippery condition of the rocks, caused by the rain, we decided to rope together. A bit of humor was evoked when June attempted to ignore the famous Teton

crawl (a narrow ledge where one has to crawl upon his stomach with 3,000 feet of hungry space below him and a barren rock wall above) by squeezing through an aperture about three inches wide.

Still roped together, we continued our ascent to the summit by means of a series of chimneys. By the time we reached the middle of the second chimney, the drizzling rain had turned into a severe electrical storm accompanied by large hail stones. We safely reached the top of this chimney and found a little overhang which offered us some protection. The storm became decidedly worse and we began to wonder if we were to be cheated of our goal by the elements. The air was charged with electricity which made our hair stand on end and sparks were emitted when we touched each other.

We waited anxiously for about a half hour before the storm eased a little and we decided to make a dash for the top. By now we were thoroughly numbed by the cold and our constant contact with the wet rocks made the last three hundred feet extremely difficult.

As if admitting defeat, the clouds rolled away as we emerged upon the summit, tired by triumphantly jubilant.

After breathlessly drinking in the beauty of the panorama laid below us, we registered our names upon the record: H. A. Collins, leader; Wally Watson, guide; Ida Chittock; June Whitehead; "Chick" Springer; and myself, "Pete." □

# Canoeing the Weber River

by John Gottman

I haven't done much canoeing since I left Minnesota and have always been intrigued by the stretch of the Weber south of Coalville. I finally got to it twice this June and found it to be exciting, technically sustained, and fairly dangerous in an open canoe.

The water was high, overflowing into the adjacent pastures and running to within 30 inches of the smaller bridges. Several put-in and take-out choices are available and much of the river can be scouted by car due to the numerous road crossings. We put in at the campground below Rockport and took out by the "Eat" cafe west of Coalville. Including the easy shuttle, the trip took five hours.

The four small dams guarantee 4-6 inches of water in the boat, and we bumped bottom on two adding to the character of my battered craft. The first dam is just below the campground and is fairly small. The second is the largest and is located just east of Wanship downstream from a bridge. It is easily observed several miles down and offers a good shoot on the right. The fourth dam appears quickly around a bend to the right and is a very steep drop.

The railroad trestle is a little tricky and the lower half of the stretch has several dangerous log jams (one totally blocks the river) best passed by beaching and walking the boat. Old cars and farm machinery along the route are dangerous, but can be avoided. There is severe danger from fences totally across the river. One was draped from the downstream side of a bridge and caused considerable damage to a boat on the first trip. A single strand of barbed wire, barely visible, caused a near disaster on the second trip.

There is no ordinance against the fences according to the Summit County sheriff and there is a move to close the river to floaters since it is so dangerous. To me this is the wrong answer. The river would be excellent in the spring if the fences were properly installed into, but not totally spanning, the river.

Boat benders: Dwight Nicholson, Mike Treshow, Marilyn Tueler, Dennis Dockerty, Hal Gribble and John Gottman.

---

Another Editor's Note: While this was not an official club outing the Board of Directors has requested its publication in an effort to 'test the waters' of Club members' enthusiasm for canoeing. Any comments from the members?



## Mt. Timpanogos

by Tom Abbay

Under bright sunshine and near-perfect snow conditions, 22 (more or less) stalwarts attacked the snow fields of Mt. Timpanogos on Sunday, July 9. After meeting at the home of co-leaders Dennis and Karin Caldwell, the group divided about in half and headed for the trailhead. One group, guided by Dennis, began the climb at the Timponeke trailhead while the other group, led by Karin, attacked from the Aspen Grove side. Due to the remains of the abnormally heavy winter's snowfall, both groups ran into long snow traverses within two miles of their respective starting points.

For the Timponeke group, all the ice axes came into play, and in Chuck's case

crampons, too, as the group abandoned the trail and scaled the snow-covered waterfall in the Giant Staircase. As this group reached Timp Basin, Diana made the discovery, somewhat to her chagrin, that she was losing her britches. The loan of a belt (albeit two sizes too large) helped modesty to prevail, and Diana and Dale and half of the group with ice axes continued up the west (north?) route while Dennis shepherded the remainder of the Timponeke group up the glacier. About 4½ hours after beginning the trek, the first hardy souls (soles?) touched the Coast and Geodetic Survey benchmark on the summit. About 30 minutes later, the first of Dennis' crew arrived. Below, we could see the first of Karin's group moving slowly up the glacier after a tough climb up the snowfields on the headwall of Primrose Cirque. By one's and two's, most of both groups eventually gained the summit where gentle breezes and cool temperatures made for ideal picnicking conditions.

Many in the party switched routes on the decent and members of both groups enjoyed great glissading on near-perfect snow. A couple of anxious moments occurred, one with each group, when Cathy (on the Aspen Grove side) and Jeff (on the Timponeke side) both unintentionally got carried away and tried to slide the entire distance in one shot. Fortunately, no lasting damage except to Jeff's glasses--which suffered a terminal case of the breaks. All in all, another great day with mellow companions.

Participants: Bill Viavant, Charles Lesley, Steve Gersten, Chuck Ranney, Tom Abbay, Cathy Haynie, Lawrence Vanderplas, Barbara Berntson, Jeff Wright, Linnea Alexandrov, Bob Mitchell, Mary Jo Sweeney, Dale Green, Mark Hessing, Bonnie Baty, George Westbrook, Lori Webb, Dorothy Weskowski, Paul Rubinfeld, Diana Schoenberg, and co-leaders, Dennis and Karin Caldwell.

## Brighton Ridge

by Barbara Berntson

Bright sun and a clean blue sky were added benefits in viewing the lowlands from the heights of the Brighton ridge. After leaving the WMC Lodge where we checked out the wiring work in progress, and led by Clay Benton, we soon encountered snow which was a "first" for some of us in terms of hiking and glissading. It also provided an opportunity to learn the technique of kicking a foot staircase on the upgrade.

Carol Greeley, John Tsamsis and Matt Redden had to head back before we reached SnakeCreek Pass, but Kyle Williams, Tim Eckels, Clint Lewis, Larry Vanderplas, Jim the Oceanographer (no last name recorded), Clay Benton, Nelson Pflieger, Lyn Tolboe and yours truly, enjoyed a lunch break and the view at the pass. All members except Lyn and Nelson pushed on to Pioneer Peak.

Copper leaching on some of the boulders created lovely patterns of a brilliant blue-green color; wildflowers were fairly sparse on the ridge. We stopped briefly at sunset, on to Tuscarora and Wolverine, where some humorous comments were read aloud by Larry from a notebook in the mailbox on the peak.

Words cannot express adequately the feeling of being on a mountaintop: there is no more "up," and on this particularly clear, clean day, looking down on Lakes Mary, Catherine and Martha and viewing Twin Lakes on the approach to Millicent, made me (a shortstuff) feel like a giant. Snowfields between the peaks afforded more glissading and galloping. Sliding down a slope on one's feet or rear stimulates a childish zestful nature. It was fun! Kyle, Tom and Larry returned to Brighton Bowl by way of the snowfield; Clint, Clay, Jim and I kept to the ridge, scrambling over large boulders along the way. Reluctant to leave the beauty of the place, we lazily stretched out in the sun on the last high place before making the descent. Good hike, Clay!

## Bowman, Gobbler's, Alexander Basin

by Katie Hedberg

We had a relatively small group (11). I personally was surprised there were that many people left in Salt Lake. After a couple of false starts, we were merrily under way. (Like gang-busters.) Fortunately after 1/4 mile or so, the pace slowed to a tolerable rate, and the goal was to enjoy. And enjoy we did. The good wine our leader thoughtfully brought for lunch, the beautiful scenery, the marvelous vistas from the top, just getting to the top, the snow that speeded our descent (ask Barbara about sliding down on your seat, sans garbage bag, in shorts!), perfect weather, great company, and one of the nicest hikes I've ever experienced.

Hikers: Angela Tan, Dàrlene Wyatt, Larry Vanderplas, Tom Abbay, Lois Shipway, Barbara Berntson, Earl Cook, Patricia Black, Douglas Christensen, Katie Hedberg, and leader, Walter Haas.

## QUALITY BOOT & SHOE REPAIR



*when you need the services  
of a shoe repair shop  
we would appreciate having you as a customer*

**480 6th Avenue  
533-0073**

**quality workmanship/reasonable prices**



## Twin Peaks By Trudy Healy

The Advance Party of seven returned from the summit just as the main contingent had settled down comfortably for lunch in the saddle between Twin and Sunset. None of those gobblers in the main party wanted to go for the summit except Trudy, but she (chicken!) didn't want to go it solo. Greg volunteered to go up again, making this his fourth ascent of Twins in 1978!

Everyone of the party of twelve reached the saddle, and eight made the summit. Alexis carried his skis to the col, scrambling up the summit ridge unburdened (you couldn't ski this ridge anyway, not even an Alexis Kelner!) But later, watching Alexis carve elegant turns down the steep slopes made the labor of the ascent look quite worthwhile. I have been on many Wasatch summits in all seasons, but this was the most enjoyable and alpine hike of all: super scenic and dramatic with the tremendous amounts of snow left. Avalanche debris was piled into a mountainous snowscape, making it most fittingly look like glaciers in this old glacial valley. The sky surprisingly changed from deepest blue to towering, mushrooming clouds. I took 35 photos that day--need I say more?

**Holubar**  
MOUNTAINEERING LTD.  
**CLIMBING/BACKPACKING**  
**SPECIALISTS SINCE 1946**  
Exclusive Holubar Clothing & Gear  
Bags, Tents, & Packs • U.S.G.S. Maps  
**SEW-IT-YOURSELF KITS**  
**RENTAL GEAR**  
Call us for Expert Advice  
4385 S. State St.  
**261-3071**


## Snake River by Mary Mitchell

Saturday was a perfect day for rafting--sunny and hot. The river was at peak and very fast. We left from Elbow and had an exciting ride on high water down to our lunch area. We anticipated Lunch Counter with a few of us scared and the rest keyed up for an exciting rapid. It was fantastic! An eight-foot wall of water met us and all three rafts made it through. One of the two kayakers with us, Ralph Nauman, lost the front of his kayak and was picked up by one of the rafts. We relaxed somewhat only to encounter Cottonwood a little down river which to some was as thrilling as Lunch Counter. We hoped for two trips on Sunday.

After dinner, most of us went to Jackson Hole for a pleasant evening at the Cowboy Bar.

Sunday dawned a miserable, cloudy, cold, windy day. One raftful decided not to go on the river at all. Undaunted by the elements, two rafts set off. Almost right away we realized we would have a rough trip. The water was terribly rough and freezing cold. Shortly before we reached Lunch Counter, we were met by a huge hole all the way across the river, followed by a big crest of water. One raft made it through, but the other dumped its captain and everyone was soaked. We made a quick rescue and at the same time went speeding down the river almost out of control. After a short conference in a quiet eddy, both rafts decided it would be folly to continue through Lunch Counter. We hauled rafts and equipment up a steep hill to the road--dry clothes, lunch and home.

Rafters: Bill Yates, John Sutton, Gary Hill, Bill Swander, Liz Leibergasel, Monica Leibergasel, Gail Borden, Bill Adams, Ted York, Don Ashton, Linda Ronan, Ruth Hoppe, Ken Kraus, Mary Mitchell, Kathy Coyne, Adrian Stevens, May Mary Nauman.

Kayakers: Al Polumbos and Ralph Nauman.



# Ramblings....

by Dale Green

Welcome to new members: Alessandra Coszewski, Joseph Coenen, James Piani.

Wick Miller postcards from Mexico: "I have arrived in the Sierra Madres in Chihuahua, where I'll be mucking about until my return at the first of September." Wick is studying linguistics.

Joseph Michl, professor of chemistry at the U. of U., has been selected for a Distinguished Research Award.

While she was eating a hamburger at Storm Mountain on a Thursday evening last June, Jane Daurelle's new motorbike (only 600 miles old) was completely stripped and the carcass thrown into Big Cottonwood Creek.

The Wasatch Mountain Club's unofficial motto is "To rest is not to conquer" from the movie, White Tower, starring Glen Ford. What is the official Club motto?

ANSWER: "Onward and Upward."



**Sam Allen**

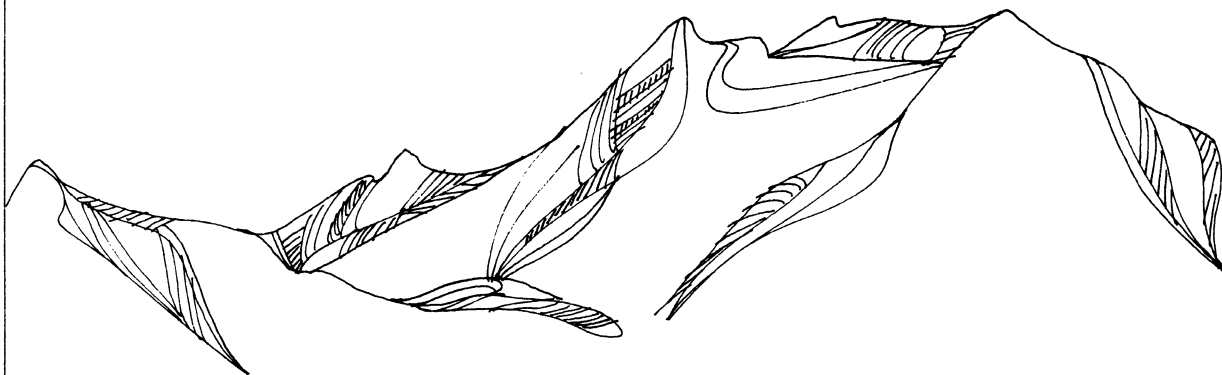
- Homes in all price ranges.
- Super financing plan for unmarrieds.
- Maximum buyer protection with buy-back guarantees.

**"BLUE RIBBON REALTOR"**

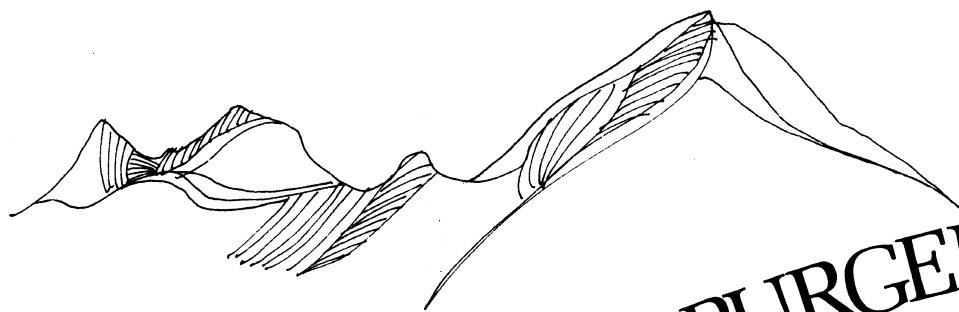
WE HAVE A NEW ADDRESS BUT WE'RE STILL THE SAME !

545 E. 4500 S. Professional Plaza  
Suite E 130 Murray, Utah 84107

Office: 261-2791 Home: 942-3149



HIKE	RTNG.	TIME	LEADER	PHONE
MT. SUPERIOR	10.0	10:00 am	Alexis Kelner Larry Swanson	359-5387 278-3269
WOLVERINE	6.0	1:00 pm	John Gottman Betty Hendricks	359-4693 487-1929
SUNSET PEAK	5.0	2:00 pm	Dwight Nicholson Phyllis Robison	359-6178 943-8500
MT. MILLICENT	5.0	2:00 pm	Trudy Healy John Riley	583-3411 485-2567
CATHERN PASS	4.0	3:00 pm	Elmer Boyd Fran Flowers	299-7814 581-9083
MT. MAJESTIC	4.0	2:00 pm	Dale Green Jackie Thomas	277-6417 487-9340
LAKE MARY	2.5	3:00 pm	Carl Bauer Carol Wiens	355-6036 272-3182
PARKING LOT TO WMC LODGE	.05	6:00 pm	Karin Caldwell Karin (work)	942-6065 581-7168



# All club HIKE & HAMBURGER bash!

Fundraiser for WMC Lodge kitchen stove

All hikes will begin at the Brighton Parking Lot and end at the WMC Lodge between 6:00 - 7:00 pm.

Choose your hike based on your desires and ability. School age children welcome when accompanied by parents on easier hikes.

CALL the hike leader and make a reservation for the HIKE AND HAMBURGER BASH by Friday, August 25.

Hike leader will return hikers to the WMC Lodge where you will be offered the opportunity to purchase a \$3.00 ticket which will entitle you to a DELUX CHAR-BROILED HAMBURGER W/TRIMMINGS, Salad and Baked Beans.

Refreshments will be available for a modest charge.

## Sunday, August 27



◻ All proceeds from this event will go towards the purchase of a new electric stove for the WMC Lodge.



WHEELER REPORTS  
AND ANALYSIS  
OF THE  
MILITARY AND  
POLITICAL SITUATION

Vol. 55 (No. 8) AUGUST, 1978

Copyright © 1978 by Wheeler Reports

Sunday, August 27

SECOND CLASS  
POSTAGE PAID  
AT SALT LAKE  
CITY, UTAH.  
(NO. 053410)