



WASATCH MOUNTAIN CLUB

# *The Rambler*

JUNE, 1978

# Wasatch Mountain Club

Persons wishing to become members of the WASATCH MOUNTAIN CLUB should request, either by telephone or in writing, an application form from the Club's Membership Director. Upon such notification, prospective members will receive 2 free, consecutive issues of the Rambler, the club's official publication, and a full application form with instructions for joining.

Dues are as follows: \$10.00 Regular (single), \$15.00 Spouse (double) and a \$5.00 initiation fee.

## BOARD OF DIRECTORS

DENNIS CALDWELL	PRESIDENT	942-6065
PEGGY TAYLOR	SECRETARY	262-6524
STEWART OGDEN	TREASURER	359-2221
MARY MANLEY	RAFTING	277-6307
WALTER HAAS	CONSERVATION	534-1262
KARIN CALDWELL	ENTERTAINMENT	942-6065
FRAN FLOWERS	HIKING	581-9083
MIKE HENDRICKSON	LODGE	278-9856
CAMILLE PIERCE	MEMBERSHIP	487-3180
JOHN MASON	MOUNTAINEERING	942-5033
ALEXIS KELNER	PUBLICATIONS	359-5387
LYMAN LEWIS	SKI TOURING	1-649-9632
JIM MASON	KAYAKING	355-3810

THE RAMBLER is published monthly by the WASATCH MOUNTAIN CLUB, Inc. 3155 Highland Dr. Salt Lake City, Utah 84106. Tel. (801) 363-7150. Subscription rates of \$6.00 per year are paid for by membership dues only. Second Class Postage is paid at Salt Lake City, Utah. Publication Number is 053410.

## CHANGE OF ADDRESS:

This publication is not forwarded automatically by the Post Office. Changes of address, and other direct correspondence regarding The Rambler, its mailing, etc. should be directed to the Membership Director.

## STAFF:

John Moellmer, Editor  
Alexis Kelner, Managing Editor

Deadline for the Rambler is the 15th. of each month.

Type (double space) your articles schedules, indicate your name and telephone number on your articles, prints, etc. Mail to (or drop by):

WASATCH MOUNTAIN CLUB  
3155 Highland Drive  
Salt Lake City, Utah 84106

or ALEXIS KELNER  
1201 First Avenue  
Salt Lake City, Utah 84103

On mailed matter indicate ATTENTION--RAMBLER EDITOR.

# Club Activities

## June 1978

---

HIKING INFORMATION: Members participating in easy or intermediate hiking (rating below 7.0) are generally not required to register with the leader. Unless otherwise stated, advanced hikes (rating above 7.0) do require registration. Adequate equipment is a must for advanced hiking. You can participate in these events only if you have demonstrated your ability on other hiking activities and if you have adequate and well broken-in boots with good Vibram-type

soles and suitable protective clothing. Special equipment, such as an ice axe, may be specified and you are expected to be able to handle such equipment. Remember that these restrictions are set for your safety as well as that of your fellow members.

Children are permitted on hikes with a rating of less than 3.0; however, permission of the leader is required on hikes with a rating between 3.0 and 5.0.

---

June 1  
Thursday

THURSDAY EVENING HIKE. Mule Hollow Trail. Meet at 7:00 p.m. at the "Storm Mountain Quartzite" geology sign 2.9 miles up Big Cottonwood Canyon from Wasatch Blvd. Park in the main Storm Mountain picnic area or near the sign. Leader: Dale Green, 277-6417.

June 1  
Thursday

EVENING CLIMBING AT STORM MOUNTAIN. Drive 3 miles up Big Cottonwood Canyon to the Storm Mountain Picnic Area. Hamburgers and drinks will be available for a fee.

June 3-6  
Saturday-  
Tuesday

YAMPA KAYAK TOUR. A four day tour through the beautiful canyons of Dinosaur National Monument. This is an intermediate tour that includes the infamous Warm Spring Rapid. Call Al Cloumbus, 1-394-5632, for details.

June 3  
Saturday

MOUNT MORIAH. El. 12050. Rating 10 to 12. Moriah is in the northern Snake Range of Nevada. Leave Friday night at 7:00 p.m. Participation open only to club members and by approval of leader, Dale Green, 277-6417.

---

COVER: Wolf's Head Peak, Wind River Mountains. Photo  
by Larry Swanson.

- June 3  
Saturday  
TWIN PEAKS (Cottonwood). Rating 10.0 This is one of the best advanced hikes our area has to offer. Meet at the mouth of Big Cottonwood Canyon. Leader: Alexis Kelner, 359-5387.
- June 3  
Saturday  
DESOLATION LAKE VIA MILL D NORTH. Rating 3.0. This is a nice hike to one of the more popular lakes in the Wasatch. Meet at the Mouth of Big Cottonwood Canyon. Leader:
- June 4  
Sunday  
WILDCAT RIDGE BACKWARDS. Rating 18.0. You must be in good shape and have lots of endurance and scrambling ability. It is a long day of almost constant "go", but the scenery is worth the effort. Meet at Petes Rock at 7: a.m. Leader: Larry Swanson, 278-3269.
- June 4  
Sunday  
KESSLER PEAK. Rating 6.0. A good intermediate spring hide. Call Fran Flowers for details, 581-9083.
- June 8  
Thursday  
THURSDAY EVENING HIKE. Mill B, North Fork trail to overlook. Meet at 7:00 p.m. at the same place as the June 1st hike. Leader: Dale Green, 277-6417.
- June 8  
Thursday  
EVENING CLIMBING AT STORM MOUNTAIN. See June 1 for directions.
- June 10-11  
Saturday-Sunday  
GREEN RIVER-FLAMING GORGE DAM TO BROWNS PARK - RIVER TRIP. Beginner trip. This trip hasn't been run by the club for several years. If you feel adventurous, send your \$20 deposit to Mary Manley, 3631 S. 23rd E., SLC, Ut. 84109. Mark your check "for Green River Trip". (I haven't run it either!).
- June 10-13  
Saturday-Tuesday  
YAMPA KAYAK TOUR. Space is limited on this tour. Call Jim Mason, 355-3810, for details.
- June 10  
Saturday  
LAKE BLANCHE-MT. SUPERIOR. Rating 6.0, 11.0. One of the most scenic hikes in the Wasatch. The jaunt up to the lake is well suited for beginners and intermediate hikers. Those who are prepared for a longer day can go all the way to the peak. Meet at the mouth of Big Cottonwood Canyon at 6:30 A.M. Leader: Fran Flowers, 581-9083.
- June 11  
Sunday  
BEATOUT (RED PINE TO BELLS CANYON). You must be in top shape for this one, as it is a long day of strenuous hiking with few rests. Register with leader John Mason, 272-7558.
- June 11  
Sunday  
RED PINE-PFEIFERHORN. Rating: 6.0-8.0. A hike similar to the above. Those who want a shorter outing can stop at the lake while the others go for the peak. Meet at the mouth of Little Cottonwood Canyon at 8:30. Leader: Elmer Boyd, 969-7814.

- June 15  
Thursday EVENING CLIMBING AT STORM MOUNTAIN. See June 1 for directions.
- June 15  
Thursday ~~PROVO~~ RIVER KAYAK TRIP. Send Thursday evening on the Provo. Hopefully, the water will be enough to do both the upper and lower sections. Plan for a cookout after boating. Meet below the dam at 5:30 p.m. Call Jim Mason, 355-3810, for details.
- June 15  
Thursday THURSDAY EVENING HIKE. Butler Fork trail. Drive 8.5 miles up Big Cottonwood Canyon from Wasatch Blvd. Butler Fork is on the left (north) and a wide parking area is to the right. Look for a blue Mustang. Meet at 7:00 p.m. Leader: Dale Green, 277-6417.
- June 17-18  
Saturday-Sunday HOBACK AND GRANITE CREEK KAYAK TRIP. Spend the weekend on these beautiful intermediate to advanced rivers by Jackson, Wyoming. Great practice for those planning to go on the Selway. Call Brad Rich, 583-2023, for details.
- June 17  
Saturday ADAMS CANYON. This scenic canyon is just east of Layton and involves a four mile round trip with some scrambling. It is a good hike for beginning to intermediate hikers. The high point of this hike is a scenic 60' waterfall. Meet at the Chevron station at the Farmington crossroads (by the Cherry Hill Campground) at 8:30 a.m. Leader: Laurence Vanderplas, 376-5278.
- June 17  
Saturday LONE PEAK. Rating: 11.0. This is a long grind, and will probably be wet. Newcomers and anyone who has not done this hike before or those who prefer a more moderate pace are encouraged to wait and go with next week's group. Register with leader Lew Hitchner at 262-7688.
- June 18  
Sunday BROADS FORK. Rating: 5.0. The trail begins at the "S" curve and winds through a densely wooded stand, finally opening out into a clearing surrounded by high peaks. Leader needed. Call Fran Flowers, 581-9083.
- June 18  
Sunday THUNDERBOLT RIDGE EXPERIENCE CLIMB. This 12- to 15-hour event involves a long hike into upper Hogum Fork, several hours of roped F5 climbing on the ridge, and a long hike out Bell's Canyon. Ice axes and good flashlights are required. Do not attempt this trip if you are a slow climber or are not in excellent condition. Register with the leader, Bob McCaig, 524-5289 (office), 466-7637 (home).
- June 18  
Sunday MOUNT RAYMOND. Rating 7.0. We will approach the peak from Butler Fork. This is a pleasant hike with a great view from the summit. Meet at the mouth of Big Cottonwood Canyon at 8:00 a.m. Leader: Mike Hendrickson, 278-9856.

- June 21  
Wednesday  
GENERAL MEMBERSHIP MEETING. We can't guarantee a snow-free approach this year, but come up and take this opportunity to enjoy a summer evening at the Lodge. Among the things to be discussed will be the current status of federal land use planning in Utah, which affects areas of primary concern to WMC. Slides will be shown and refreshments served. Time: 8:00 p.m. Place: WMC Lodge at Brighton.
- June 22  
Thursday  
EVENING CLIMBING AT STORM MOUNTAIN. See June 1 for directions.
- June 22  
Thursday  
THURSDAY EVENING HIKE. Lake Blanche Trail. Meet at 7:00 p.m. at the "S" curve, about 4.5 miles up Big Cottonwood Canyon from Wasatch Blvd. There is plenty of parking along the road and in the trees on the right just after the first left turn. Leader: Dale Green, 277-6417.
- June 24-25  
Saturday-Sunday  
SNAKE RIVER-ALPINE CANYON RAFT TRIP. Water levels at this time of year should be pretty exciting. We will be car camping for this trip. For more details call the trip leader, Bill Yates, 1-723-3853. A \$10 deposit is required. Send it to Bill at 625 W. 6th South, Brigham City, Ut. 84302.
- June 24  
Saturday  
WHEELER PEAK (Nevada). Rating 8.0. We will start in the middle campground, hike to the upper campground, then on to the peak. There are options as to how you arrange this trip. Meet at Lehman Creek Campground #2 at 8:00 a.m. Leader: Lyman Lewis, 1-649-9632.
- June 24  
Saturday  
LODGE WORK PARTY. This is the annual occasion for the spring cleanup and fixup at the club Lodge. Volunteers will be needed for the various tasks required for the spring spruceup. Refreshments will be provided as well as a lunch prepared by Jude Whitehead. Call Mike Hendrickson, 278-9856, for details.
- June 24  
Saturday  
MIDSUMMER PARTY. Once again we will celebrate the summer solstice with a festive gathering at the Lodge in Brighton. On hand for your entertainment will be Dale Wagstaff and his band, who roused our spirits at the last Halloween party. Time: 8:00 p.m. Price: \$3.00 per person. Please make reservations with Karin Caldwell, 942-6065 (home) or 581-7168 (office), on or before Friday the 23rd.
- June 25  
Sunday  
AMERICAN FORK TWINS. Rating 8.0. We will take the usual approach from Albion Basin and return via White Pine. There is a long rock scramble with many exposed sections. Good boots are a must. (No tenny runners will be permitted) Meet at the mouth of Little Cottonwood Canyon at 6:30 a.m. Leader: Fran Flowers, 581-9083.

- June 25  
Sunday  
LONE PEAK. Rating 11.0. This is probably the most popular of the "toughies" in the Wasatch. I believe almost anyone can make the summit with patience and given time. Many people who would like to try this hike are discouraged by the fast, unrelenting pace at which this type of hike is usually taken. This special Lone Peak hike has been scheduled to give those who rate themselves as intermediate hikers a chance to experience the thrill of looking out over the valley from the highest of the local peaks. Even if you choose to stop in the cirque, you will have seen the most awe-inspiring and beautiful place in the Wasatch and at the best time of year. So, to everyone who would like to hike Lone Peak, this is your chance. Call leader, Carl Bauer, for details. He will need a ride. 355-6036.
- June 28-  
July 3  
Wednesday-  
Monday  
SELWAY KAYAK TOUR. An advanced tour for six days on the beautiful and wild Selway River is planned. Due to the required advanced trip list, this tour is already filled. However, there is a waiting list for qualified club members. Call Dan Thomas, 561-5667, for details.
- June 29  
Thursday  
THURSDAY EVENING HIKE. Alexander Basin. Meet at 7:00 p.m. at Elbow Fork, 6.3 miles up Millcreek Canyon from Wasatch Blvd. to a sharp right turn by a small dam. Leader: Dale Green, 277-6417.
- June 29  
Thursday  
EVENING CLIMBING AT STORM MOUNTAIN. See June 1 for directions.
- July 1-3  
Saturday-  
Monday  
INDEPENDENCE DAY BACKPACK. Destination undecided as of press time. We may be able to run two trips depending on interest and availability of leaders. Tentative plans are for a Uintah trip and possibly one in the Zion Canyon area. Call Fran Flowers for information, 581-9083. Please, no inquirers later than June 26 unless you intend to provide your own transportation.
- July 1-4  
Saturday-  
Tuesday  
WIND RIVERS MOUNTAINEERING HIGH CAMP. This trip will go to the vicinity of Squaretop Mountain in the Green River Lakes area. Several routes are available in this area of varying degrees of difficulty. We will probably be camping on snow this early in the season. For information and registration, call the leader, Joyn Gottman, 328-8066 ext. 359 (office), 359-4693 (home).
- July 1-4  
Saturday-  
Tuesday  
KAYAK TRIP UNKNOWN. If you are interested in kayaking over the July 4th weekend, give Mike Taylor, 1-621-4154, a call and get something organized.
- July 1-9  
Saturday-  
Sunday  
CASCADES MOUNTAINEERING TRIP. This trip will go to the southern Cascades in Washington to climb several of the glaciated peaks in that area. Call the leader for infor-

mation and registration. Leader: John Mason, 582-5847 (office), 942-5033 (home).

July 1  
Saturday

BRIGHTON RIDGE. Rating: 8.0. The trail starts by the lodge, goes to Snake Creek Pass then circles the Brighton Bowl. The hike to Snake Creek Pass is in itself a fine beginner hike. Those who would like to go a little further can go from the pass to the summit of Mount Majestic. Meet at the mouth of Big Cottonwood Canyon at 7:00 a.m. Leader: Fran Flowers, 581-9083.

July 1  
Saturday

SNAKE CREEK PASS - MOUNT MAJESTIC. Ratings: 3.0-4.0. See details in previous BRIGHTON RIDGE trip.

July 2  
Sunday

BOWMAN FORK - GOBBLERS KNOB - ALEXANDER BASIN. Rating: 7.5. This is a fine hike taking in a scenic area. Meet at The Movie (Olympus Hills Shopping Center) at 8:30 a.m. Leader: Walter Haas, 534-1262.

July 2  
Sunday

BOX ELDER PEAK. Rating: 10.0. This peak is in the American Fork area. The route will be up the east side and back down the west slope. Meet at the Prudential Plaza (3300 South State Street) at 7:00 a.m. Leader: Trudy Healy, 583-3411.

July 6  
Thursday

EVENING CLIMBING AT STORM MOUNTAIN. See June 1 for directions.

July 6  
Thursday

THURSDAY EVENING NATURE HIKE. Professor Mike Treshow, University of Utah Biologist, will describe local flora. This nature hike is intended mainly for persons new to the area; those who have attended the lecture before will probably not hear anything new. Meet at 7:00 p.m. at the Storm Mountain Quartzite sign (see directions in the June 1 Thursday hike) for car pooling to a suitable area. Leader: Mike Treshow, 467-1022.

July 8-9  
Saturday-Sunday

COLORADO FAMILY RAFT TRIP. This is a popular trip down the Colorado just above Moab. To register your family we need a \$10 deposit (check payable to WMC) and the names and ages of the family members who are going on the trip. Send to Mary Manley, 3631 S. 23rd East, SLC, Ut. 84109. Phone is 277-6307. This will be a car camping trip so you do not need waterproof river bags. PLEASE, no children under six years.

July 12-17  
Wednesday-Monday

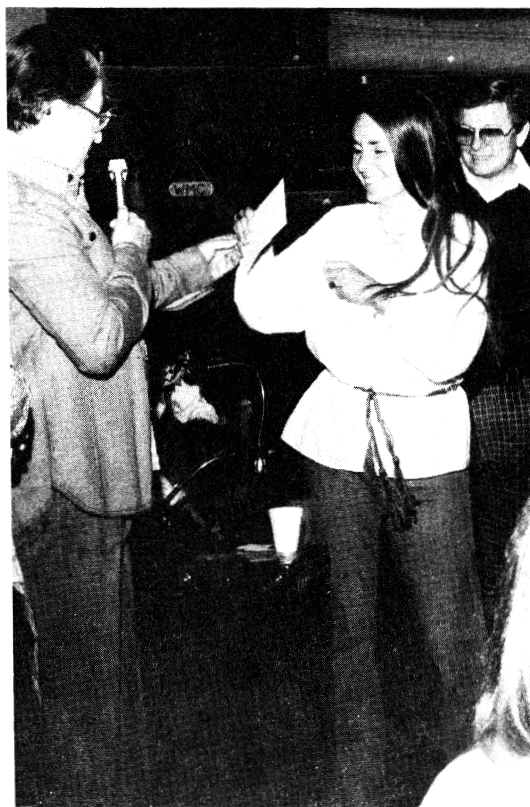
MAIN SALMON KAYAK TOUR. Spend six days floating down the beautiful Salmon. This intermediate tour has some really great rapids. Call Al Polumbos, 1-394-5632, for details.

July 13  
Thursday

EVENING CLIMBING AT SOTRM MOUNTAIN. See June 1 for directions.



- July 14-16  
Friday-Sunday  
LODORE CANYON RAFT TRIP. Intermediate. This is a beautiful trip down the Green River through Dinosaur National Monument and there is plenty of whitewater. The permit is for 25 people and the trip will fill up fast so get your money in now. You must have been on one previous club raft trip and you must be a club member. ABSOLUTELY NO EXCEPTIONS!!! Send your \$20 deposit (check payable to WMC) to Mike Taylor, 1304 Millcreek Drive, #7, Ogden, Utah, 84401. His number is 1-621-4154 if you have any questions.
- July 15-16  
Saturday-Sunday  
NORTH FORK OF BOISE KAYAK TRIP. An intermediate stretch of whitewater with lots of excitement. Call Jeff Niermeyer, 487-1514, for details.
- July 22-24  
Saturday-Monday  
TUSHAR MOUNTAINS IN SOUTHERN UTAH. Climb the three 12,000 foot peaks. Details next Rambler. Leader: Dale Green, 277-6417.
- July 22-24  
Saturday-Monday  
ALPINE CANYON KAYAK TRIP. Get out of Utah for the three day weekend and do some great intermediate-advanced boating by Jackson, Wyoming. Some of the time will be spent on the Grey's River as well as the Snake. Call Chuck Denton, 1-782-5514, for details.
- July 29-30  
Saturday-Sunday  
ALPINE CANYON BEGINNER & FAMILY RAFT TRIP. This will be one of our usual trips on the Sanke River. To register your family (or yourself) we need a \$10 deposit (payalbe to WMC) and the names and ages of the family members who are going on the trip. Send to Dick Honn, 4608 Lanark Rd., SLC, Ut. 84117. This will be a car camping trip and please, no children under six years.
- July 29-30  
Saturday-Sunday  
WESTWATER KAYAK TOUR. Camping overnight in the canyon is planned for this advanced-intermediate tour. The air and water temperatures should be comfortably warm. Call Randy Frank, 466-6277, for details.
- August 5-6  
Saturday-Sunday  
ALPINE CANYON RAFT TRIP. X-RATED, Adults only. Anyone interested in leading this trip please call the Rafting Director, 277-6307. See details in July Rambler.
- August 26-27  
Saturday-Sunday  
ALPINE CANYON FAMILY RAFT TRIP. See details in July Rambler.
- ????  
MAIN SALMON RAFT TRIP. Advanced. We are on the waiting list for a permit so we do not know the dates at this time. If you want to go, can get 5 days vacation on short notice, and have had previous experience on club raft trips, then call 277-6307 to put your name on the list.

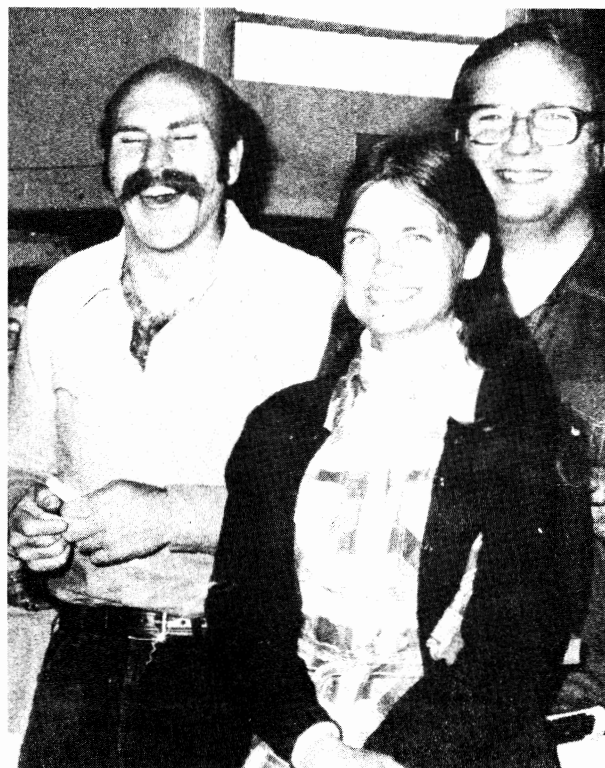


# A Gala Elegant

By Dennis Caldwell photos: A. Kelner

Our first annual Wasatch Mountain Club Lodge Fund Raiser was a great success. Over 140 persons turned out to the event and consumed 75 pounds of beef bourguignon and 10 gallons of wine. In itself this must have been some kind of a record in serving a full course dinner at the lodge.

The affair appears to have netted about \$900, which is a good start for the \$10,000 needed to complete the first phase of the restoration.



# Evening Soiree at the Lodge

A number of door prizes, amounting to about \$800 worth of outdoorsy merchandise, were won by various individuals throughout the evening. The following recreational outfitters deserve our sincere "Thanks" for helping make the fund raiser a great success:

TIMBERLINE SPORTS, INC.  
VILLAGE SPORTS DEN  
HOLUBAR MOUNTAINEERING LTD.  
SPORTHAUS LTD.  
VAGABOND SPORTS.  
THE MOUNTAINEER  
SPORTHAUS LTD.  
WASATCH MOUNTAIN TOURING CO.  
FROSTLINE

Live entertainment consisted of music spanning four centuries.

To meet the projected financial requirements for the restoration project, it will take a persistent effort on everybody's part over the next few years.

There is plenty of willing man-power available. How much they can do will depend on donations from everybody within the Club as well as other fund raising activities outside of the immediate membership.

# A Tirade from the Hiking Director

by Fran Flowers

It was recently brought to my attention that there are some people who feel that the spring hiking program has been inadequate. As I understand it, the main complaints are, 1) there are not enough hikes, and 2) they are too easy or too hard.

Prior to 1977 there was usually only one hike per day - (some weekends, one hike period) in the early part of the season. We've doubled that number the last two years in an effort towards keeping the groups smaller. Getting people to lead hikes, especially beginner and intermediate hikes, has always been a problem. It was a pain before but it's a bigger pain now. Few people are willing to commit themselves to this responsibility. Look at a seasons worth of past Ramblers, count the number of different names listed as hike leaders, compare it with the number of people who show up hike after hike and you'll have to admit that a lot of people are not doing their share. (Are you one of them?)

To the person who complained about the hikes being either too easy or too hard, I can only point out that you are woefully ignorant of early season snow conditions. Since you consider Grandeur Peak too easy and Thunder Mtn. too hard, it is assumed that you want something rated in the 6.0 to 8.0 range. If you can suggest any intermediate trails that we have not done at least twice already and that are sufficiently clear of snow by the second week of April, I'd be tickled to hear all about them. On the other hand, if you can convince enough people that six miles of post-holing can be fun, I'll suggest that next year's committee schedule some early season slogs to Lake Blanch or Red Pine.

As long as my pen is already hot I'm going to touch an another related situation. As you may have noticed, there is an increasing tendency for leaders of backpacks to limit the number of participants. We intend to try to provide alternate trips so that no one will have to be excluded. The first attempt shows little promise for as of press time there is no leader for the alternate Memorial Day trip. In the past, participation in these special events has been on a first come first serve basis but recently the fairness of this policy has been questioned. The suggestion has been made that these trips be handled in the same manner as the raft trips which require full membership plus a service oriented activity in the form of a work party in order to qualify for the trip. As applied to backpacking, this would mean that anyone can register for the trip but priority will be given those who have attended a trial clearing hike, cleanup hike, or led a hike during the current season. Rambler staff, board members, committee members and the few well known habitual 'doers' do enough already to qualify for any trip. The above policy applies mainly to those who seem to think that the club runs itself and that their very presence is service enough.

In summary, the number of hikes, backpacks, etc. is going to depend more and more on the cooperation we get in finding leaders. Advanced hikes are no problem, the fellows have been just great. Their help is really appreciated. But you intermediate hikers are going to have to take more responsibility or be satisfied with fewer hikes and larger groups. And, anyone interested in fall backpacking would be wise to volunteer to lead something in the next couple of months.

# News & Notices

The Wasatch Mountain Club Membership List is now being prepared for distribution later this summer. If your name, address, or phone number have changed since your last dues payment please notify Camille Pierce immediately.

Telephone: 487-3180.

In September we will hold our annual Wasatch Mountain Club Chamber Music Concert at the Lodge. Now is the time to get in practice in order to participate in this program. Again a piano will be available. Contact Karin Caldwell for details. Home: 942-6065, office: 581-7168.

Over the past year the Rambler Staff has been trying to overhaul and make more appealing the Club's monthly publication. Almost all the problems have been solved with one major exception. We are still looking for some conscientious and competent typists who would be willing to type (at their home on the Club's fine IBM Selectric machine) one complete issue once every three months. We also need someone who would be willing to take on the responsibility of billing (again once every few months) and contacting the Clubs half dozen or so advertisers. Call Alexis Kelner if you can help: 359-5387.

**Holubar**  
MOUNTAINEERING LTD.  
**CLIMBING/BACKPACKING  
SPECIALISTS SINCE 1946**  
Exclusive Holubar Clothing & Gear  
Bags, Tents, & Packs • U.S.G.S. Maps  
**SEW-IT-YOURSELF KITS  
RENTAL GEAR**  
Call us for Expert Advice  
4385 S. State St.  
**261-3071**


  
Cards  
Welcome



On the ridge toward south peak of Thunder Mountain.  
Photo by Alexis Kelner.



# TRIP Talk talk talk talk

## The Gourmet Ski Tour

APRIL 16, '78

The vernal equinox had passed but winter was reluctant to move over so that spring might share the land. The festival was to Venus, goddess of spring, the gourmet ski tour and the end of a great season of powder snow, love and fun.

Thirty-eight sleepy eyeballs peered out of the icy little holes in their car windows waiting for a sign from our dauntless, maybe a little beguiled, leader, Mike Hendrickson, to move out and up the canyon.

So went Sunday, April 16, icy roads, snow, sleet and sunshine. With a lot of determination the WMC lodge was reached. A fire was quickly started, then down to the business at hand, "The Gourmet Banquet."

Oxtail soup, swedish meatballs, sausage rolls, mushrooms in wine sauce, taco salad, hot wrapped asparagus, blintz, goiababa and cheese(Brazil), rum fruit-cake, goat milk candy(Mexico) only to mention a few. Of course the wines of many kinds, brandy and burbon slush.

Those gratifying of one's desires were: Stev Gersten, Jeanne Ricker-son, John Dawson, Chris Ingalls, Bob Anvers, Barbara Richards, Ruth Holland, Larry Hoskins, JeanCrich-enberger, John Walker Frank, Randy Frank, Jim Mason, Marty MacKnight, Herb Lepley, Monica Liebergesell, Tita Nesbitt, Tracy Burgess, Ann McDonald and Mike Hendrickson.

Apologies for misspelled names & forgotten foods.

## Mt. Aire—Oops!, Neff's Canyon

by Samuel F. Thomas

May 6, 1978. Snowed and rained out of our scheduled trip to Mt. Aire. Four of us: Ilka, Steve, Ruth and Sam took a consolation walk up Neff's canyon. We ascended in a somber yet festal landscape; fir trees white-laden as at Christmas, dark ridges vanishing into the clouds and tempests of the north wind. A gentle snowfall sealed the silence of the canyon. It was a time to recite verse, to munch and to mediate

### QUALITY BOOT & SHOE REPAIR



when you need the services  
of a shoe repair shop  
we would appreciate having you as a customer

**480 6th Avenue**  
**533-0073**

quality workmanship/reasonable prices



"The Wasatch Mountain Club Visits Vivian Park"--Decoration Day, 1923. Photo by W. H. Hopkins.

## Lookout Peak

by Chris Ingalls      MAY 7, '78

Lookout is right! Look-out for sudden blizzards, false summits and quick sunburns.

This was the occasion May 7 which began appropriately when the leader failed to show up and three adventurers and I decided to disappear in the fog. Four miles later, hunger headaches and an amateur diagnosis of bursitis forced our party to stop for a quick lunch consisting of just enough rum-soaked pineapple chunks and hot spiked tea to boost our morale.

Staggering to the summit we then found that with the help of a Hefty

trash bag we could slide ourselves off this mountain as long as the snow lasted. It didn't last long enough, having returned to the lower rain-soaked trail after six hours of slogging, we encountered a combination of slick Georgia red clay and the Green Gombo which better became termed that four-letter word everyone knows so well.

Once back in the city again we instinctively treated ourselves and called it a fun hike at that.

Participants: Stephan Gertsen, Ilka Allers Stallard, Walter Haas, Chris Ingalls.



## Storm Mountain

by Trudy Healy      APRIL 7, '78

Storm Mountain via Ferguson. Why is Ferguson Canyon advertised as infamous? Yes, friends, there is a trail. At least John knows how to stay on it. "I helped cut it- many years ago," he finally admitted, getting tired of the gushings of admiration.

The lower canyon is extremely scenic - lots of waterfalls and interesting rock towers. Fortunately we had snowshoes along and we surely needed them in the deep, soft, new snow a little higher up.

We walked in clouds almost all the way. The usually great views into valleys and towards peaks was exchanged for close-up views of a porky in a tree, six deer in a meadow and a blizzard all around us.

John Riley, leader; David Urbano and Trudy Healy, followers.

## Grandeur Peak

- APRIL 23, '78

Fifteen people showed up at Olympus Hills for this trip, many to find that the old "Movie" parking area was gone. From the parking area at Church Fork, the group immediately split into the usual fast, moderate and leisurely hikers, all plodding through mud all the way to the ridge. A few glacier lilies were found along the trail.

The ridge was snow-covered but the snow was solid and did not present any problems other than the possibility of sliding off the knife edge ridge. The lunch stop on top was in the warm sun with a clear view of the city. Hikers were: Gary Couillard, Gretchen Belanger, Shirley Hager, Joy Ray, Steve Gersten, John Riley, Jim Piam, Mike Hendrickson, Eveline Bruenger, Phyllis Robison, Dale Green, Duncan Foley, David Urbano, Lawrence Vanderplas and "leader" John Dawson.

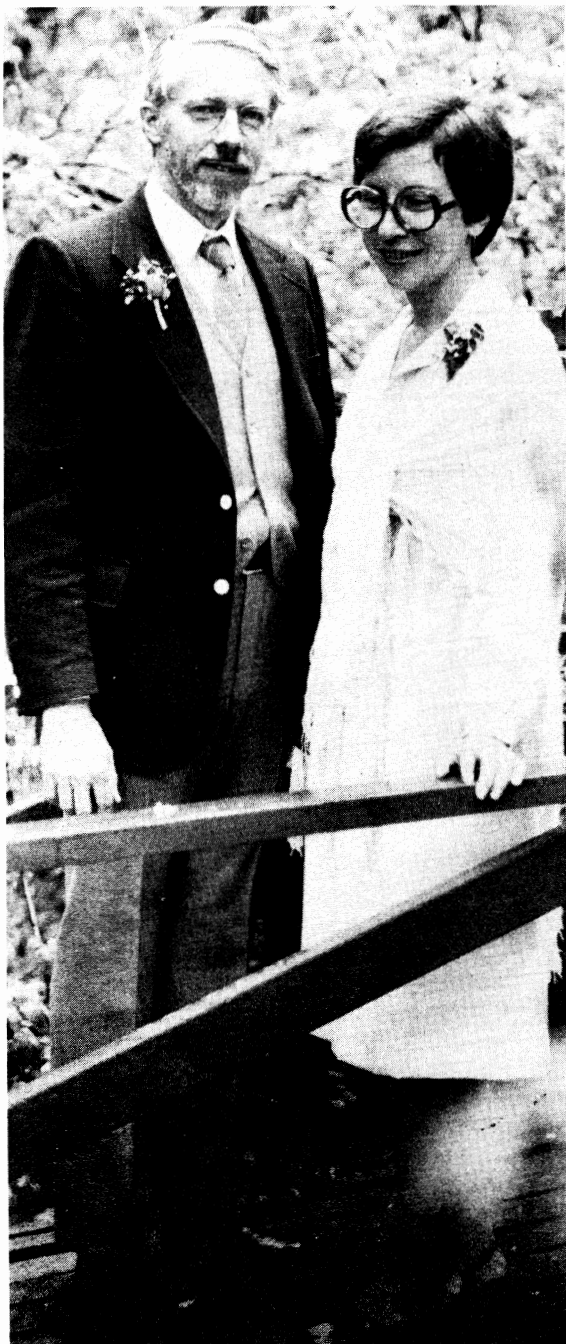
# BACKPACKERS CANOE LOVERS KAYAKERS

Timberline Sports rents nearly  
everything for outdoor people.

Kayaks  
Canoes  
Stoves  
Backpacks  
Tents  
Sleeping Bags



Timberline Sports  
3155 Highland Drive  
466-2101



Dorothy Wiskowski and Ron Weber  
officially married on May, 6, 1978.

# Ramblings....

by Dale Green

WELCOME to new members: Don Ashton, Marianne Ausseresses, Ricky Bliss, Faith Briggs, Fern Caldwell, John & Margaret Carter, Douglas Christensen, Steve Gersten, Denise Knapp, Jim Melton and Jackie Nappa, Virginia Pearson, Larry Piette, Tony Thompson, Donald Wachter, Roy & Carol Zimmerman.

Karl Zeller has moved from Las Vegas to Denver where the BLM has selected him to provide the necessary expertise for the development of Colorado's air resource programs.

Bob Galbraith and Mary Jo Sweeny are moving to Hanford, Washington. Bob will be working on underground nuclear waste disposal.

Kay Berger was named "Residential Salesman of the Year" by the Salt Lake Board of Realtors.

A few inquiries have been received as to the meaning of the date on your Rambler's addressing plate. It is the date the plate was typed and was initiated to keep track of members who move every other month.

Condolences to Sarah Weller Weston whose Mother died April 17th.

Please send news items to Dale Green  
4230 Sovereign Way, SLC, Ut., 84117  
or call Dale at 277-6417.



**Sam Allen**

- Homes in all price ranges.
- Super financing plan for unmarrieds.
- Maximum buyer protection with buy-back guarantees.

**"BLUE RIBBON REALTOR"**

WE HAVE A NEW ADDRESS BUT WE'RE STILL THE SAME !

545 E. 4500 S. Professional Plaza  
Suite E 130 Murray, Utah 84107  
Office: 261-2791 Home: 942-3149

### For Sale by Senior Member

7 Piece Antique Tiffany Sterling  
Silver Tea Service.

- 1 Antique Russian Samowar
- 1 Antique handmade hangelock with  
brass weights
- 1 Antique keywinding silver pocket  
watch
- 2 Antique handmade doublebed quilts

Blue Ribbon winner houseplants.

- 1 granny afghan
- 1 Navajo Rug = 48-40

Please call 467-4342  
If not home (friends) 277-4881



WASATCH MOUNTAIN CLUB  
3150 HIGHWAY 89  
SALT LAKE CITY, UTAH 84106

Vol. 55 (No. 6) JUNE, 1978

SECOND CLASS  
POSTAGE PAID  
AT SALT LAKE  
CITY, UTAH.  
(NO. 053410)