



WASATCH MOUNTAIN CLUB

# The Rambler

Vol. 56, No. 4. April, 1979

# Wasatch Mountain Club

Persons wishing to become members of the WASATCH MOUNTAIN CLUB should request, either by telephone or in writing, an application form from the Club's Membership Director. Upon such notification, prospective members will receive 2 free, consecutive issues of the Club's Schedule of Activities, and a full application form with instructions for joining.

Dues are as follows: \$10.00 Regular (single), \$15.00 Spouse (double) and a \$5.00 initiation fee.

## BOARD OF DIRECTORS

DENNIS CALDWELL	PRESIDENT	942-6065
BARBARA BERNTSON	SECRETARY	363-4110
STEWART OGDEN	TREASURER	359-2221
WAYNE SLAGLE		943-1695
and	RAFTING	
CHUCK RANNEY		363-7285
WALTER HAAS	CONSERVATION	534-1262
PHYLLIS HAAS	ENTERTAINMENT	534-1262
ANN CHEVES	MEMBERSHIP	533-9074
TRUDY HEALY	HIKING	583-3411
MIKE HENDRICKSON	LODGE	278-9856
BOB McCAIG	MOUNTAINEERING	487-6868
LORI WEBB	SKI TOURING	566-0868
JOHN SCHELL	KAYAKING	268-2489
JOHN MASON	PUBLICATIONS	942-5033

## *The Rambler* (USPS 053-410)

THE RAMBLER is published monthly by the WASATCH MOUNTAIN CLUB, Inc. 3155 Highland Dr. Salt Lake City, Utah 84106. Tel. (801) 363-7150. Subscription rates of \$6.00 per year are paid for by membership dues only. Second Class Postage is paid at Salt Lake City, Utah. Publication Number is 053410.

## CHANGE OF ADDRESS

This publication is not forwarded automatically by the Post Office. Changes of address, and other direct correspondence regarding *The Rambler*, its mailing, etc. should be directed to the Membership Director.

JOHN MASON, Managing Editor

Deadline for *The Rambler* is the 15th of each month.

TYPE (double space) your articles and schedules, indicate your name and telephone number on your articles, prints, etc., and mail to (or drop by):

WASATCH MOUNTAIN CLUB  
3155 Highland Drive  
Salt Lake City, UT 84106

or JOHN MASON  
8470 Kings Hill Drive  
Salt Lake City, UT 84121

On mailed matter indicate  
ATTENTION--RAMBLER EDITOR.

THANKS:...to Lois Shipway, Debbie Savage, Alexis Kelner, Dale Green.

# Conservation Comments

---

## SNOWMOBILERS ATTACK

By Walter Haas

The Utah Snowmobile Association has reacted with outrage to the Draft Travel Plan for the Salt Lake Ranger District of the Wasatch National Forest. The Travel Plan proposes to eliminate snowmobile use in Millcreek Canyon and Big and Little Cottonwood Canyons. The snowmobilers are enraged at this interference with their God-given right to operate their machinery anywhere they please. They have written literally hundreds of letters to the Forest Service complaining about the proposed Travel Plan. The Forest Service is forced to accept these letters as representing the public reaction to the Plan.

Unfortunately, cross country skiers and hikers have not written in significant numbers to support the proposal. Unless a large number of supporting letters are received in the next week, the Forest Service will be forced to amend the Travel Plan to permit increased motor vehicle use.

The only person who can do anything about this is you.

Write before April 13 to:

Mr. Phil Glass  
Salt Lake Ranger District  
6944 South 3000 East  
Salt Lake City, Utah 84121

Tell him that you support the Draft Travel Plan for the Salt Lake Ranger District, and that as a hiker and/or cross country skier, you appreciate the improved quality and safety of Forest use that you expect from this proposal.

# Club Activities—April 1979

---

## Ski Touring, General Comments

- Call 942-4059 for avalanche information.
  - Club equipment--probes, may be borrowed from John Riley, 3639 Palisades Dr., 485-2567. Also, a portable toboggan is available.
  - Tour leaders may request you bring shovels, avalanche cords, and Pieps as they deem necessary.
  - All tours limited to 12 participants. Reservations not accepted more than 5 days in advance and close at 9:00 p.m. on the day preceding the tour.
  - See article on general ratings in the January issue of the RAMBLER. Ratings can vary according to the route. Discuss with the leader.
  - Ratings: NTD, Not Too Difficult; MoD, More Difficult; MsD, Most Difficult.
  - Most Difficult (MsD) tours limited to qualification list in the December, 1978 issue and subsequently qualified people. See article in the January, 1979 RAMBLER on how to qualify for the MsD list.
- 

## Hiking, General Comments

Hiking Ratings: The higher the number, the harder the hike. Considered are length, altitude gain, and difficulty of terrain. Up to 4.0 it's easy, 4.5-6.5 sort of middling. 7.0 and up is difficult, and registration with the leader is necessary. Call leaders between Monday and Thursday of the week of the hike or weekend trip. If you cannot keep a date, call to cancel, to give others a chance.

---

- |                        |   |
|------------------------|---|
| April 5<br>Thursday    | EVENING CLIMBING AT PETE'S ROCK. Meet about 5:30-6:00 p.m. at Pete's Rock (5500 South Wasatch Blvd.)  |
| April 6<br>Friday      | KAYAK POOL PRACTICE, 7-9:00 p.m. Beginners especially welcome, instruction in Eskimo rolls. Northwest Multipurpose Center, 1300 West 3rd North by the fairgrounds. Contact John Schell, 268-2489. |
| April 6-8<br>Fri.-Sun. | MsD EXPLORATORY OVERNITE TO THE RUBY MOUNTAINS, NEVADA. Leader: Dwight Nicholson, 583-6054.   |
- 

COVER: On the Alta to White Pine Ski Tour. Mar. 11, 1979  
Photo by Larry Swanson.

- April 6-8  
Fri.-Sun. CAPITOL REEF BACKPACK. The complete Lower Muley Twist is planned; a shorter loop is possible. Call the leader to find out how many gallons of water to carry. Mike Hendrickson, 278-9856.
- April 7  
Saturday BIG BEACON. Rating 3.0. A good one to start the hiking season. Meet at 9:00 a.m. at the east end of the Hogle Zoo parking lot. Leader: Jackie Thomas, 487-9340.
- April 7  
Saturday NTD WHITE PINE CANYON IN LITTLE COTTONWOOD. Leader: Frank West, 1-225-5999.
- April 7  
Saturday MoD HONEYCOMB FORK FROM BRIGHTON. Leader: Bob McCaig, 487-6868.
- April 7  
Saturday MsD MINERAL FORK FROM LAKE BLANCHE, 5,500 vertical feet--all uphill!!! Alpine equipment only! Leader: Dave George, 359-8177.
- April 8  
Sunday 10:00 a.m. RAFTING WORK PARTY. Put on your grubbies and come help check out the boats. We expect those who want to raft this year to come and give us a hand. Those new directors need all the help they can get! Location: The Storage Center, 4317 South 300 West, Unit #214. In case of severe weather conditions this event will be postponed until April 22, same time and place. Questions, call Chuck or Wayne.
- April 8  
Sunday NTD LOWER DAYS FORK. Leader: John Riley, 485-2567.
- April 8  
Sunday MoD SUNSET PEAK FROM BRIGHTON, VIA CATHERINE PASS. Leader: Oscar Robison, 943-8300.
- April 8  
Sunday SNOWSHOE TOUR, MoD RED PINE LAKE (LITTLE COTTONWOOD). Leader: Elmer Boyd, 969-7814.
- April 8  
Sunday MSD HERITAGE MOUNTAIN SANS SKI LIFTS. Leader: Harold Hafterson, 1-479-5739.
- April 8  
Sunday CITY CREEK. Carl knows where the hiking is good, and the first flowers best. Meet at 9:00 a.m. at the lower gate of City Creek Canyon (East Capitol Road and 11th Avenue). Leader: Carol Bauer, 355-6036.
- April 8  
Sunday 6:00 p.m. WINTER SOCIAL. The traditional leaders of the gourmet ski tour invite you to yet another gourmet affair, this time in their own home. Anne and Gale Dick live on 1377 Butler Avenue, just north of the University Campus and east of Virginia Street.
- April 11  
Wednesday BEGINNING KAYAKING CLASS AND SOCIAL, 7:30 p.m. Call John Schell for information at 268-2489.
- April 12  
Thursday EVENING CLIMBING AT PETE'S ROCK. (See April 5 for directions.)

- April 13  
Friday KAYAK POOL PRACTICE. See April 6 write up.
- April 13-15  
Fri.-Sun. HORSESHOE CANYON. Easy backpack through a picturesque canyon with spectacular rock art. Leaders: Larry Hoskins and Ruth Holland. For details call Larry at 272-1754.
- April 13-15  
Fri.-Sun. GRAND GULCH--LOWER SECTION. Backpack through this famous primitive area, loaded with Anasazi ruins and rock art. Call leader, Dorothy Holland, 272-2949.
- April 13-15  
Fri.-Sun. MoD NORDIC OVERNIGHT TO TARGHEE. Leader: Audrey Stevens, 1-649-9884. Leave late Friday afternoon. Rustic and inexpensive but adequate accommodations. Bring sleeping bag and pad. Two days of great XC touring in sight of the Grand Tetons. Guaranteed Good Snow if you register by April 11. REGISTRATION MANDATORY.
- April 14  
Saturday NTD LAKE SOLITUDE. Leader: John Dawson, 262-7061.
- April 14  
Saturday MoD SILVER FORK VIA TWIN LAKES PASS FROM BRIGHTON. Leader: Mike Hendrickson, 278-9856.
- April 14  
Saturday HOUNDS TOOTH. This spectacular rock outcropping is located above Wasatch Blvd. between the Cottonwoods. Meet at 9:00 a.m. at the mouth of Big Cottonwood. Leader needed; call John Riley, 485-2567.
- April 15  
Sunday BIG BEACON. In case you missed this popular hike last week, here it is again. Meet at 9:00 a.m. at east end of Hogle Zoo parking lot. Leader: George Healy, 583-3411.
- April 15  
Sunday MoD-MsD VIA BUTLER FORK TO MILLCREEK. Leader: Tom Stephens, 486-2994.
- April 15  
Sunday NTD, LAKE MARY. Leader needed for family trip. Call Trudy Healy, 583-3411.
- April 19  
Thursday EVENING CLIMBING AT PETE'S ROCK. (See April 5 for directions.)
- April 20  
Friday KAYAK POOL PRACTICE.
- April 20-21  
Fri.-Sun. CAPITOL REEF CAR CAMP. Lots of hiking possibilities there. For details call leader Joy Ray, 272-3149. A group camp has been reserved.
- April 21  
Saturday WEBER RIVER ICE BREAKER KAYAKING TRIP, Henefer to Devils Slide. Beginner to intermediate; leader Bill Sill, 278-1193.
- April 21  
Saturday MoD WOLVERINE. Leader: Diane Schoenberg, 943-9857.

- April 21  
Saturday PERKINS PEAK (Alias Big Mountain), El. 7,491. Rating 5.5. This peak, called Perkins by the locals, is the highest point between Parley's and Emigration canyons. A challenging scramble if there's snow on the knife edge. Meet at east end of Hogle Zoo parking lot at 8:30 a.m. Leader: Karl Lagerberg, 581-9826.
- April 21  
Saturday PENCIL POINT. Hike as far as you want along the ridge, which is located north of Parley's Canyon. Meet at the east end of the K-Mart parking lot at Parley's Way (Regency Theater) at 9:00 a.m. Leader: Wick Miller, 467-3943.
- April 21-22  
Sat.-Sun. ROCKHOUNDING TRIP. Overnight camping at Clear Lake (mosquitoes, labradorite), then snowflake obsidian at Black Rock. Meet at Prudential Plaza, 3300 South and State, at 9:00 a.m. on Saturday. Call leader Elmer Boyd, 969-7814.
- April 22  
Sunday NaHCO<sub>3</sub>. THE FAMOUS GOURMET'S DELIGHT SKI TOUR. No limit! Leaders: Gale and Ann Dick, 359-5764.
- April 22  
Sunday CITY CREEK CANYON, SOUTH RIM. Another spring flower spectacular. Meet at Shriner's Hospital at 9:00 a.m. Leader: Carl Bauer, 355-6036.
- April 22  
Sunday STANSBURY PEAK, El. 6,645, on Stansbury Island. Rating 6.0. No trail on this one. Unusual views. Meet at parking lot across from Skaggs at Sugarhouse, Simpson Avenue, just west of 1300 East at 8:00 a.m. Leader: George Swanson, 466-3003.
- April 22  
Sunday 6:00 p.m. WINTER FAREWELL SOCIAL. This year's social season ends in grand style, with a festive gathering at Diane and Andy Schoenberg's new home at 3118 East Alta Hills Drive (roughly 8700 South). You simply can't miss this one!
- April 26  
Thursday EVENING CLIMBING AT PETE'S ROCK. See April 5 for directions.
- April 28  
Saturday LODGE SNOW REMOVAL AND PARTY. See Lodge column in this issue for details. Register with Mike Hendrickson, 278-9856, for time and details.
- April 28-29  
Sat.-Sun. DEWEY BRIDGE TO MOAB KAYAK TRIP. A beginner trip on Class II water. Bring a wetsuit; the water is in the low 40's. We'll camp at Rock Garden rapid Friday night and run our trip from there. To reach our camp take route 163 south and approximately 16 miles on 128. Campsite is on the left. Leader: Dan Thomas, 255-1341.
- April 28-29  
Sat.-Sun. DEWEY BRIDGE TO MOAB BEGINNER RAFT TRIP. This is our most popular beginner trip with its superb scenery and sterling comraderie. Remember, a beginner trip is a requirement for more advanced trips! Send your \$20 deposit to the leader Larry Peterson at 1230 East 8285 South, Salt Lake City, Utah 84070. If you need more information, call him at 255-5245.

- April 29  
Sunday  
GRANDEUR WEST RIDGE, El. 8,240. Rating 6.5. One of the best intermediate, trailless spring hikes. Meet at northwest corner of Olympus Hills Shopping Center at 8:30 a.m. Leader, John Veranth, 278-9022.
- April 29  
Sunday  
CEPHALOPOD GULCH. Pretty, different. Probably lots of flowers. Meet at north end, east edge of the University Hospital Medical Center's north parking lot at 9:00 a.m. Leader: Carl Bauer, 355-6036.
- April 29  
Sunday  
SOUTH RIDGE OF SUPERIOR CLIMB. This will involve substantial exposed scrambling, possibly some roped pitches if the leader gets scared, and undoubtedly a great deal of snow slogging. Ice axes will be required, and registration is essential. Mark Bradakis, 583-4841.
- April 30  
Monday  
Names for YAMPA KAYAK TOUR, Advanced, June 7-10, must be in to trip leader Bob Meyer--work 322-5513, ext. 2564 or home 1-863-2564. A limited number of rafters (advanced) are permitted.
- May 3  
Thursday  
EVENING CLIMBING AT STORM MOUNTAIN. See May Rambler for details.
- May 4  
Friday  
KAYAK POOL PRACTICE. See April 6 for details.
- May 4-5  
Fri.-Sat.  
GREYS CANYON OF THE GREEN RIVER KAYAK TRIP. A kayak practice session for beginners to advanced. Leader: John Schell, 268-2489.
- May 5-6  
Sat.-Sun.  
BUCKSKIN GULCH-PARIA PRIMITIVE AREA. This backpack involves approximately 18 miles in two days as well as a seven-hour drive each way. Some ropework and a lot of wading and mudding are also required. This trip will be limited to eight people. Register with Mike Hendrickson, 278-9856, for details.
- May 5  
Saturday  
OLYMPUS, El. 9,026. Rating 8.0. An ascent of 4,200 feet, but all on a trail--hidden under snow higher up. Meet at 9:00 a.m. at Pete's Rock (approximately 5500 South Wasatch Blvd.) Leader: George Westbrook, 966-6792.
- May 5  
Saturday  
GRANDEUR, El. 8,240, via Church Fork. Rating 4.5. Beautiful streams and falls in the lower part, probably snow on the ridge. Meet at northwest corner of Olympus Hills Shopping Center. Leader: Carl Bauer--he needs a ride--355-6036.
- May 6  
Sunday  
LOOKOUT MOUNTAIN, El. 8,954. Rating 5.5. Located above Emigration Canyon. It might be muddy, flowery, snowpacked. Good views. There's a trail of sorts. Meet at the east end of Hogle Zoo parking lot at 9:00 a.m. Refreshments at Healy's Bar and Grill. Leader: Trudy Healy, 583-3411.
- May 6  
Sunday  
SALT LAKE OVERLOOK (Desolation Trail from Millcreek). Meet at 9:00 a.m. at the northwest end of Olympus Hills Shopping Center. Leader: Carl Bauer, 355-6036. He needs a ride.



- May 11  
Friday KAYAK POOL PRACTICE.
- May 11  
Friday MOONLIGHT HIKE TO GRANDEUR. Meet at the northwest end of Olympus Hills Shopping Center at 8:00 p.m. Leader: Walter Haas, office: 581-5617; home: 534-1262.
- May 12  
Saturday MT. AIRE, El. 8,620. Rating 3.0. This is the highest point between Millcreek and Parley's Canyon. Meet at the northwest end of Olympus Hills Shopping Center at 9:00 a.m. Leader: Steve Gersten, 359-4934.
- May 12  
Saturday TIMPANOGOS, El. 11,750. Rating 11.0, under summer conditions. At this time it's a challenging winter mountaineering trip. Ice axe required and knowledge of how to handle it. Perhaps alpine skis will be needed. Call leader between May 7 and 10. Neff Walker, 262-9022.
- May 12  
Saturday STANSBURY PEAK, El. 6,645. Rating 6.0. Another try at this exceptional peak on Stansbury Island. Meet at east end of K-Mart parking lot at Parley's Way (Regency Theater) at 8:00 a.m. Leader: Elmer Boyd, 969-7814.
- May 12-13  
Sat.-Sun. GRAYS CANYON KAYAK TRIP. Leader needed. Contact John Schell, 268-2489.
- May 12-13  
Sat.-Sun. ARCHES NATIONAL PARK BACKPACK. Call the leader for details: Ann Cheves, 533-9074.
- May 12, 13  
Sat.-Sun. DOLORES RIVER RAFT TRIP/BEGINNER-INTERMEDIATE. There will be more than enough water this year and the scenery is superb. As a matter of fact, there may be so much water that you should consult with Dave before signing up if you are a rank beginner and have no redeeming physical skills. Send your \$20 deposit to the leader Dave Hart, 1518 Sunnyside Avenue, Salt Lake City, Utah 84105, 583-3228.
- May 13  
Sunday STORM MOUNTAIN, El. 9,524. Rating 9.0. Route is via lovely Ferguson Canyon. Let's hope there enough snow left to cover what we don't want to fight through. For details call the leader, Lori Webb, 566-0868.
- May 13  
Sunday DALE SUMMIT, El. 7,276. Rating 3.0. A nice little summit between Emigration and Parley's, with a descent to Healy's Bar and Grill, with refreshments provided by the leader, Trudy Healy, 583-3411. Meet at east end of Hogle Zoo at 9:00 a.m.
- May 17-20  
Thurs.-Sun. DOLORES RIVER KAYAK TOUR-INTERMEDIATE TO ADVANCED. Contact Randy Frank, 466-6277.
- May 18-20 COYOTE GULCH BACKPACK with Gerry Powelson.

- May 19 ADAMS CANYON with Larry Vanderplaes.
- May 19 NORTH PEAK OF THUNDER MOUNTAIN with Sam Allen.
- May 20  
Sunday TIMPANOGOS WITH THE CALDWELLS.
- May 25  
Friday Last KAYAK POOL PRACTICE.
- May 25-28  
Fri.-Mon. DESOLATION CANYON RAFT TRIP-INTERMEDIATE. This four-day Memorial Day weekend trip winds its way through one of the deepest and most inaccessible canyons in Utah and throws in many rapids, some of them formidable, to boot. Send your \$20 deposit to the trip leader Bill Yates, 625 West 600 South, Brigham City, Utah 84302. If you have any questions, call him at 1-723-3853.
- Memorial Day  
Weekend FOUR-DAY Slickhorn Canyon Backpack, Johns Canyon Car Camp (both near Grand Gulch), and Salt Creek Backpack in Canyonlands. No leaders yet.
- June 9-12  
Sat.-Tues. YAMPA RAFTING TRIP-ADVANCED. A firm list of trip participants must be mailed to the Park Service by May 5. To secure your reservation on this trip, please submit a \$20 deposit, your name, address and phone number to the trip leader no at 2500 Cinnabar Lane (7030 South), Salt Lake City, Utah 84121. Bus transportation is anticipated. Trip leaders are Wayne and Betty Slagle, 943-1695. No calls after 10:00 p.m. please. Remember, only one trip per year allowed in Dinosaur.
- June 28-July 4  
Thurs.-Wed. MAIN SALMON RAFT TRIP-ADVANCED. Dates include travel time. See May Rambler for details.

## **SPRING SALE**

### **15% to 50% OFF**

**NEW FREE CATALOGS  
ARE HERE**

- 2 New Tent Styles
- New Internal Frame Pack
- Knickers - Wool or Mountain Cloth

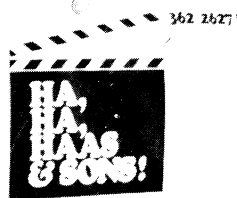
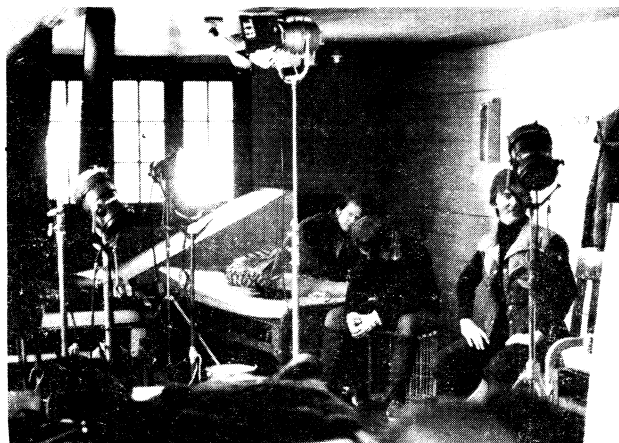
## **FROSTLINE KITS**

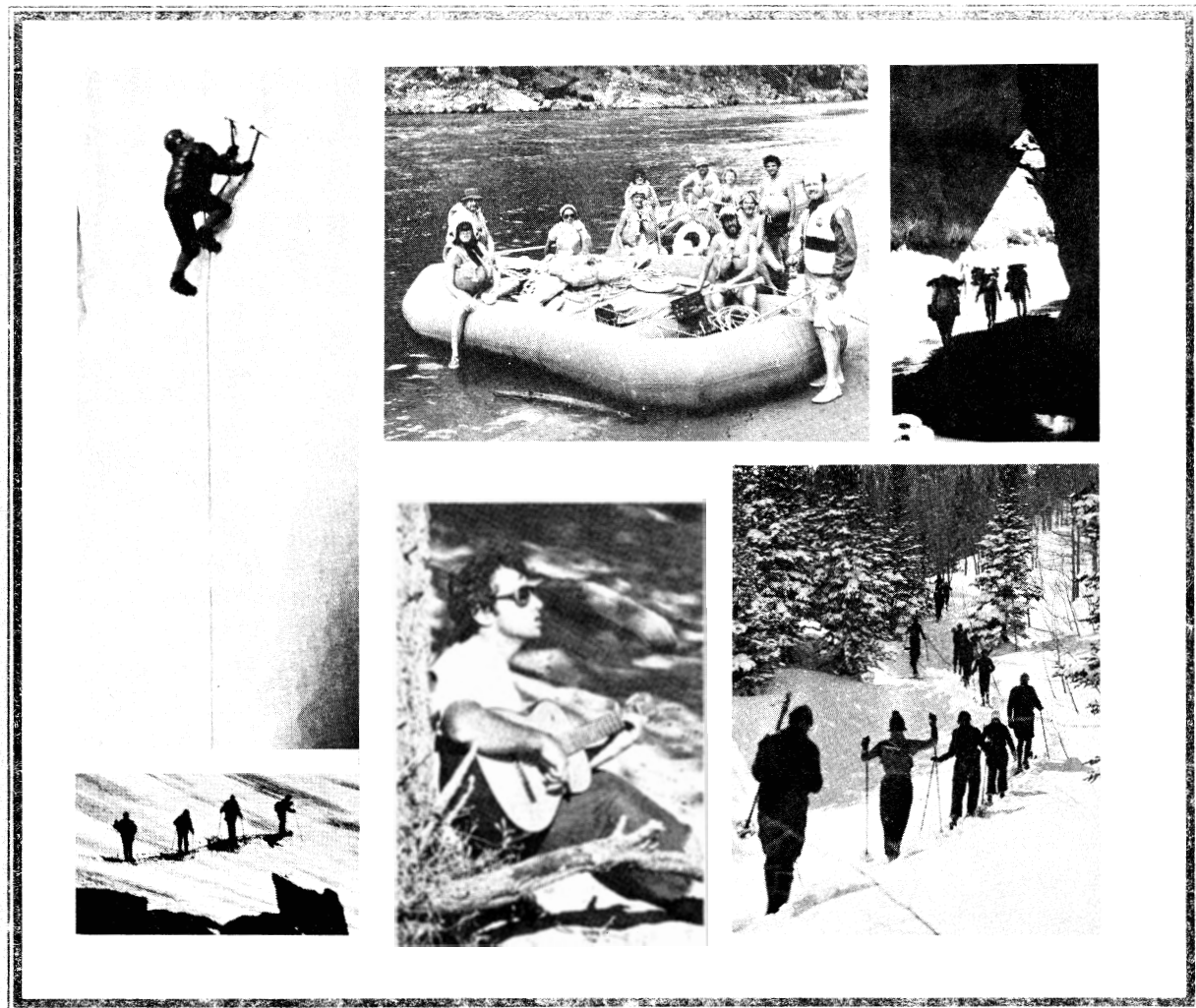
**6801 South State • 561-2611**

**SPECIAL ANNOUNCEMENT  
FOR THE GALA OPENING  
ON MAY 19 OF THE  
WASATCH MOUNTAIN CLUB  
LODGE  
INTRODUCING THE 1979  
SUMMER SEASON.  
WE'LL HAVE REFRESHMENTS,  
GOURMET DINNER AND  
LAVISH ENTERTAINMENT.  
FOR MORE DETAILS SEE THE MAY RAMBLER**

**MARK THE DATE  
ON YOUR CALENDAR  
NOW**







**1979**  
**Wasatch Mountain Club**

# **Constitution and By-Laws**

# **Rules and Regulations**

# Constitution

## ARTICLE I - PREAMBLE

Section 1. The name of the club shall be Wasatch Mountain Club, Inc. It is a non-profit organization, organized and with headquarters at Salt Lake County, State of Utah. Its purpose shall be to promote the physical and spiritual well being of its members and others by outdoor activities; to unite the energy, interests and knowledge of students, explorers and lovers of the mountains of Utah; to collect and disseminate information regarding the Rocky Mountains in behalf of science, literature and art; to explore and picture the scenic wonders of this and surrounding states; to advertise the natural resources and scenic beauties of the State of Utah; and to encourage preservation of forests, flowers and natural scenery as well as wild animal and bird life.

## ARTICLE II - MEMBERSHIP

Section 1. The membership of the Wasatch Mountain Club shall be made up of Life, honorary, regular and spouse members, all of whom shall be 18 years of age or older.

Section 2. As outlined in the By-Laws, any person meeting the admission requirements for a specific membership, whose fees and annual dues are paid and who has received a favorable vote of the Board of Directors, is a member of this club with all rights and privileges of the type of membership to which he has been elected.

Section 3. The rights and privileges of members shall include but not be limited to: voting, holding office, attending club functions at member rates and examining club books and records at reasonable times.

Section 4. At least three (3) general membership meetings shall be held each year as specified by the Board of Directors. One general membership meeting shall be the annual business meeting at which the election of trustees and directors shall be held as outlined in the By-Laws. A quorum shall consist of fifteen (15) members, including two (2) directors.

Section 5. The membership of any member may be terminated by a unanimous vote of the Board of Directors. Whenever a membership terminates, all rights and interests pertaining thereto revert to the Wasatch Mountain Club.

## ARTICLE III - DIRECTORS

Section 1. The Board of Directors shall consist of at least 10 but no more than 15 qualified members, as defined in the By-Laws, who shall

be elected. The term of office shall be one (1) year or until a new board is elected. A new board shall take office at the first scheduled Board of Directors meeting following the annual business meeting.

Section 2. A president, secretary and treasurer shall be part of the Board of Directors and shall be its officers.

Section 3. Any vacancy occurring in any office shall be filled by appointment by the President, subject to the approval of the remaining Board of Directors.

Section 4. Each director shall perform the duties outlined in the By-Laws. If any director be considered inactive or otherwise undesirable, he may be discharged from office by unanimous vote of the remaining directors.

Section 5. No director shall receive any financial remuneration for services rendered to the club in such capacity.

Section 6. The control of all business and activities shall be vested in the Board of Directors and Trustees. The Board shall act only at regular meetings or special meetings upon proper notice. A quorum of the Board shall consist of a majority of its members.

#### ARTICLE IV - TRUSTEES

Section 1. The Board of Trustees shall consist of four elected members in good standing and the president of the club. One member shall be elected each year at the annual business meeting for a four year term. Each member shall have served previously for at least one year on the Board of Directors and shall have been a regular member of the Wasatch Mountain Club for at least five (5) years.

Section 2. The senior member of the Board of Trustees shall act as chairman. The chairman shall call special meetings as requested by the president of the club, or at his own discretion, upon proper notice.

Section 3. Should a vacancy in the Board of Trustees occur during the year, a new member shall be elected by the remaining trustees, said member to serve until the next annual business meeting of the club, when a member shall be elected by the membership to serve for the unexpired term.

Section 4. Each trustee shall perform the duties outlined in this constitution and contained in the position's records. If any trustee be considered inactive or otherwise undesirable, he may be discharged by unanimous vote of the remaining trustees.

Section 5. Any expenditures of the club which exceed \$300 in the single project or the sale or other disposal of any property valued in excess of \$200 must be approved by a majority of the Board of Trustees. A written report to the president or Board of Directors

shall be made within twelve (12) days of the date that the chairman or a majority of the trustees are formally informed of the proposed action. Should the Board of Trustees fail to act within the specified time, the matter shall be automatically referred back to the Board of Directors for action.

Section 6. The authority and responsibility for the interpretation of this constitution shall be vested in the Board of Trustees.

Section 7. The Board of Trustees shall be responsible for an audit of the books of the treasurer at the end of his term of office. It shall be completed within thirty (30) days after the term ends.

#### ARTICLE V - HISTORY

Section 1. There shall be a written and pictorial history of the club maintained, giving recognition for outstanding services of individuals or groups of individuals to the club. The Board of Directors shall appoint a club historian to compile and maintain said history.

#### ARTICLE VI - PUBLICATIONS

Section 1. The RAMBLER shall be the official publication of the Wasatch Mountain Club.

#### ARTICLE VII - RULES OF ORDER

Section 1. Robert's Rules of Order shall govern all parliamentary matters.

#### ARTICLE VIII - DURATION

Section 1. The period of duration is perpetual.

#### ARTICLE IX - AMENDMENTS AND BY-LAWS

Section 1. This constitution may be amended by a two-thirds vote of the members present at any general membership meeting, provided that notice has been mailed to the general membership at least ten (10) days before the date of such meeting, such notice stating generally the substance of the proposed amendments, the time, date and place of the meeting.

Section 2. Any member may submit a proposed amendment to the Board of Directors for consideration and it shall be referred to the membership upon approval of the Board.

Section 3. By-Laws, not in conflict with the constitution, may be passed, amended or repealed at any meeting of the Board of Directors by a two-thirds vote of the total Board, provided all Board members are notified by mail or otherwise, of the exact nature of the proposed change, the time, date and place of meeting, at least ten (10) days prior to the meeting.



# By-Laws

## I. DUTIES OF OFFICERS AND DIRECTORS

BY-LAW I-A: THE PRESIDENT shall be active head of the club; shall be chairman of the Board of Directors; preside at general meetings of the membership; and shall exercise all powers of supervision over club affairs which are not otherwise provided for in the Constitution and By-Laws. Subject to approval of the Board of Directors, he shall appoint a member to fill any vacancy on such Board. He shall also have power to appoint special committees and call special meetings.

BY-LAW I-B: THE SECRETARY shall be secretary of the Board of Directors; shall take minutes of all board meetings and membership meetings; attend to all club correspondence; keep an accurate and dated copy of the Constitution and By-Laws.

BY-LAW I-C: THE TREASURER shall receive and disburse all funds under the direction of the Board; handle the accounts, etc., as outlined in a system accepted by the Board; render monthly financial statements to the Board; and shall be bonded in the amount of \$1,500.

BY-LAW I-D: THE BOATING director shall be responsible for the annual rafting schedule, safety considerations, obtaining necessary permits, and obtaining and maintaining club boating equipment.

BY-LAW I-E: THE CONSERVATION director shall serve as chairman of the conservation committee, inform board members of conservation problems affecting their area of interest, and inform the general membership of major conservation issues and those affecting the local area. The committee shall meet at least once every three months.

BY-LAW I-F: THE ENTERTAINMENT director shall arrange all entertainment and social programs and secure a hall for meetings.

BY-LAW I-G: THE HIKING director shall be responsible for the formulation of the annual hiking schedule, maintain a hiking leadership and safety program, and supervise club maintenance of existing trails.

BY-LAW I-H: THE KAYAKING director shall be responsible for the formulation of the annual kayaking schedule, obtaining permits, and maintaining a leadership and safety program.

BY-LAW I-I: THE LODGE director shall have charge of the club lodge at Brighton.

BY-LAW I-J: THE MEMBERSHIP director shall keep an accurate membership list, submit qualified applicants for board approval, and have charge of all activities directed toward obtaining new members.

BY-LAW I-K: THE MOUNTAINEERING director shall be responsible for the formulation of the annual climbing schedule, climbing instruction, and all club mountaineering equipment.

BY-LAW I-L: THE PUBLICATIONS director shall compile, edit and publish the RAMBLER and preserve copies of same in club files.

BY-LAW I-M: THE SKI TOURING director shall be responsible for the formulation of the entire season's ski touring schedule, all club ski touring equipment, and shall maintain a leadership and avalanche safety program.

BY-LAW I-N: RECORDS: It shall be the duty of each director to keep records and suggestions concerning his department and pass these on to his successor.

BY-LAW I-O: All board members are strongly encouraged to appoint committees to aid in their duties, subject to the approval of the Board of Directors.

## II. BOARD OF DIRECTORS

BY-LAW II-A: The regular meeting of the Board of Directors shall be held during the first and third weeks of the month at a place and time designated by the Board.

BY-LAW II-B: Club expenditures shall be made only upon authorization by the Board of Directors and all disbursements must be approved by the Board. Individuals paying club bills shall be reimbursed only upon presentation of receipts.

BY-LAW II-C: Bank accounts of the club shall be kept at a bank approved by the Board. Funds shall be withdrawn only over signatures of both the President and Treasurer, or in their absence, over signatures of officers duly designated to take the place of either of those officers.

BY-LAW II-D: Voting shall be by secret written ballot when any of the following matters are being voted upon: A) election of officers; B) passing, amending or repealing a by-law; C) discharging a director from the board; D) expulsion or suspension of a member from membership; E) election or reinstatement of an applicant to membership if a secret ballot is requested by any one Board member.

BY-LAW II-E: Rules and policies governing club trips and events and use of club equipment shall be formulated and enforced by the Board in such manner as they see fit. General rules and policies shall be published annually in the RAMBLER.

BY-LAW II-F: The President shall be authorized to sign, on behalf of the club, Forest Service leases and documents related to the lodge.

BY-LAW II-G: The President shall distribute an up-to-date copy of the Constitution and By-Laws to each elected or appointed member of the Board of Directors at the second regularly scheduled meeting of the director's term of office and to each member of the Board of Trustees by June 1 of each fiscal year. Changes to the Constitution or By-Laws shall be published in the RAMBLER.

BY-LAW II-H: The President, with consent of the Board of Directors, shall appoint, by the second Board meeting in November, a nomination committee of three members; at least two of whom shall previously have served on the Board of Directors. This committee shall publish in the January RAMBLER a slate of at least one nominee for each board position who meets qualifications of Section III of the Constitution and who are willing to serve on the Board of Directors if elected. The slate shall be selected with due regard for special abilities required for various positions to be filled by the Board of Directors. The nomination banquet will be held in time to publish the final slate of candidates in the February RAMBLER. Nominations may be made from the floor by any member at the nomination dinner, provided a definite commitment has been obtained from the member nominated that he will serve if elected, or that the person nominated is present and states willingness to serve if elected.

BY-LAW II-I: The election meeting will be held at the annual business meeting which must take place by February 20.

### III. MEMBERSHIP

BY-LAW III-A: At the annual business meeting, the election of Directors shall be by secret written ballot. Ballots may be obtained at the business meeting or by written request to the Board of Directors.

BY-LAW III-B: Prospective members must participate in two regular Club activities. A regular activity is defined as an event officially scheduled by the Club or some auxiliary function authorized by the Board of Directors in the course of performing their assigned duties. It will be the responsibility of the Membership Director to maintain a current list of available service activities and encourage the participation of each applicant in this program.

BY-LAW III-C: Membership fees shall include an initiation fee of \$5 for regular members, and annual dues of \$10 and dues of \$5 for spouse members. Membership Year shall be from March 1 to the following last day of February, inclusive. From March 1 to April 30 shall be a period of grace during which time full membership privileges will be allowed to the previous year's members except only fully paid members shall be eligible for major Club functions. A half year's dues may be paid during the second half of the Membership Year; except that during the last two months, applications for immediate membership will be accepted with full dues for the next membership year.

BY-LAW III-D: Any former member of the Club may be reinstated to membership by favorable vote of the Board of Directors upon payment of a \$5 reinstatement fee. Payment of the reinstatement fee will be required for reentry of any person whose membership has lapsed.

BY-LAW III-E: An applicant for membership in the club who has fulfilled all other requirements for membership shall become a member upon election by the Board of Directors provided not more than one director voting shall vote against admission of the applicant to membership. Action on any application for membership may be deferred by a majority vote of the Board until a future date either before or after a ballot has been taken on the application, provided that the applicant has not been admitted to membership.

BY-LAW III-F: Non-dues paying spouse of members and their children under 18 may be limited by formal Board action as to activities in which they may take part.

BY-LAW III-G: A member qualified for a Board position has participated in at least eight scheduled organized outdoor activities.

BY-LAW III-H:

- 1) Life membership may be awarded to individuals who have:
  - a) been regular or spouse members for 25 years.
  - b) rendered service to the club equivalent to at least a one-year term on the board.
  - c) maintained a visible level of recent interest in club affairs.
- 2) Life members will be duly identified in club membership lists and be granted all the privileges of regular membership. They will be exempt from dues; however, those wishing to continue receiving the RAMBLER will be assessed an appropriate subscription rate.
- 3) Under extenuating circumstances, paragraph 1a may be waived, provided an equivalent 25-year association with the club can be documented.
- 4) The procedure for voting in or dismissing life members will be the same as the one for regular members.
- 5) A spouse membership can be converted into a life spouse membership on the basis of either partner's qualifications. If subsequently it is split into two single memberships, the privileges of life membership are retained only by individuals who satisfy the longevity requirements above.
- 6) This By-Law is not retroactive with respect to existing to life members.

BY-LAW III-I: Honorary membership may be granted for a period of one year to a person who by deed or other such action renders the club or its members a significant service. Number of honorary members shall not exceed 2% of current membership. Annual dues shall not be assessed.

# Rules and Regulations

## GENERAL RULES OF CONDUCT

1. In the event of any accident or rescue, the expenses incurred shall be the sole responsibility of the individual incurring said expenses whether or not said individual shall deem them necessary.
2. No person shall be permitted to carry or use firearms.
3. All persons will refrain from needless destruction of plant and animal life.
4. No short-cutting on trails.
5. The trip leader is in full charge and all persons will be governed by his decisions.
6. No person shall be allowed to participate in a trip if, in the opinion of the leader, he is not qualified and adequately equipped to successfully complete the trip.
7. Leave camps and trails in same or better condition than found. Carry all non-burnable trash (cans, glass, foil, etc.) back out.
8. Obnoxious indulgence in alcoholic beverages will not be tolerated in connection with club functions.
9. Children can be taken on hikes with permission of leader in advance.

## LODGE REGULATIONS

1. Respect club property at all times.
2. Fires built must not be left unattended.
3. Positively no smoking in upstairs dormitories.
4. Unoccupied lodge must be kept locked. This applies to lodge week ends when all members may be away for certain periods of time.
5. Before leaving, review checkout list posted on bulletin board near kitchen.
6. No animals allowed inside the lodge.
7. Leaders shall obtain keys from lodge director or designated person and return them within two days after lodge activity.
8. The lodge is available many times during the year for rental to approved non-member groups at reasonable rates. Contact lodge director for details.
9. Children are not to be allowed in the lodge unless willing leader specifically signified thus.

## RAFTING REGULATIONS

1. Life jackets must be worn at all times while on the river and while loading and unloading boats that are in the water. This regulation will be strictly enforced by the trip leaders, and anyone who flagrantly violates this rule will be barred from future trips. The club will not rent life jackets so plan to buy a good type I jacket, cost is about \$15.50.

2. A person is assured of a position on a trip upon receipt of a \$20 deposit (check payable to the Wasatch Mountain Club) by the trip leader as listed in the RAMBLER. Verbal intent to go will not confirm a reservation. The deposit will not be returned if you drop out within seven days before departure. One other important point, you must be a club member before you can go on the rafting trip so if you haven't joined yet, get moving!
3. The work party prior to the trip is absolutely essential to the success of the trip. It is usually held 2 to 5 days before departure and at this time the cooking assignments are given, transportation arranged, and the remaining money collected. Not to attend the work party inconveniences everyone else on the trip so please show up.
4. The cost of the raft trips is \$3/person/day for use of the boats and equipment. Transportation and food costs vary with each trip and are extra.
5. Each person on the trip is expected to do his/her share of the work involved with the trip. If you want to be waited on and don't want to paddle or help carry gear, then please go on a commercial trip. We don't need you.
6. The trip leader is the final authority of the trip, and the captain is the sole master of the raft; so please respect their decisions. These people take on a tremendous amount of responsibility and would appreciate your cooperation.
7. The dates listed for the trips are for time on the water. Departure is usually the evening before.

#### QUALIFICATIONS

River trips will be classified according to estimated difficulty and participants will be classed according to experience and ability. This is done not only to aid the trip leader in filling the boats with well-rounded crews, but also to provide for the safety of all members. The trip leader has the responsibility for deciding the qualifications of participants. In general, trip position is held in the order that deposits are received, but the ability to handle the rapids expected on the trip will be a consideration.

#### CLASSIFICATION

#### QUALIFICATIONS

Beginner

Physical ability, willingness to work, must be WMC member.

Intermediate

As above, experience on at least one other trip.

Advanced

As above, experienced on at least two intermediate trips; ability to handle intermediate and advanced river situations.

# THE PAUSE THAT REFRESHES

By A. Kelner

"COKE ADDS LIFE" so the television commercial goes. The setting: a mountain cabin in the woods. Looking out an old style triangular dormer with latticed windows an attractive blonde puts an opened bottle of Coca Cola to her lips and gently tips her head in a relaxing, contemplative sip. Small bubbles rise up into the bottle. A cheesy grin of satisfaction appears on the girl's face as she looks out the cabin window at the snow covered trees.

"Cut! Cut! " Someone yells. "We need a little more 'Glug, Glug' in the next take. Put a little more stuff in the bottle and let's try it again. Allright, doll?"

"Yeah. Let me wet my lips a little and get in the mood of this."

Behind a dozen glaring spotlights and reflectors an almost unnoticed figure pops the tab on a Coke can and with the aid of a funnel fills the bottle from it. The bottle passes to another pair of hands and yet another before it finally reaches the attractive model. A man with a Windex sprayer adds the final touch --a gentle mist of water that forms glittering beads on its glass surface. Ahh ..the perfect refresher!

"No walking on the floor please! " Comes the next command. "Camera's rolling... Action!"

The bubbles are much better this time, and the smile more subtle. The camera continues gently whirring for fifteen seconds before it stops. "Beautiful, Beautiful!" mutters the cameraman as he relaxes the grip on the cine camera.

These were some of the scenes at the Wasatch Mountain Club's Lodge last Thursday, as a crew of some sixteen directors, cameramen, writers, grips, technicians, and models assembled there to film vignettes for a series of thirty second commercials for the Coca Cola Company. The production crew which had assembled at Brighton last week were from both sides of the country. Several were from the McCann-Erickson Advertising Agency from New York--the principal ad agency for the Coca Cola Company. The film crew was from Harvest Films, Hollywood.

For someone used to stuffing a parka-wrapped camera and a peanut butter sandwich into a rucksack the logistics of the production were impressive: It took three large Thiokol snowcats several trips just to transport the lighting and camera equipment to the Lodge. Four hours were required to set up the inside lighting in the 'ladies' dormitory. Some twenty "takes" were required before the cameraman and director were satisfied with the results and ventured outside for similar shots at the same dormer.

"With Park City and Snowbird so easily available why did you choose Brighton and the WMC lodge?" was a point of curiosity. "We tried Park City, but they didn't have the amounts of snow we wanted. We spent a day at Snowbird also, but all we could get there was a large resort atmosphere and a lot of concrete."

Another point of curiosity: "With the resources of Hollywood why not use a studio with backscreen projection for the background?" "Shhhh!" was the reply. "We'd like to come back here."

# Lodge Activities

By Mike Hendrickson

Again this spring and summer, the Lodge Committee has decided on the following functions to be scheduled in the continuing quest for refurbishing the Lodge.

## Lodge Roof Shoveling

As anybody who has used the Lodge in the spring can tell you, there is a definite problem with leaking water inside the Lodge (particularly in the kitchen area and the winter entrance area). To try to alleviate this problem it was decided to shovel off the roof in the latter part of April. This activity will take place on Saturday, April 28, and will be followed up by dinner and the usual WMC liquid refreshments to celebrate the occasion. Please register with Mike Hendrickson, 278-9856, by April 24.

## Lodge Fund Raising Dinner

The second annual fund raising soiree will be held on May 19 and will feature good food, drink, and giveaway prizes. Check the May Rambler for details and announcements.

## Kitchen Remodeling

The major project for the summer is the complete remodeling and renovation of the kitchen annex. This will include removing and replacing the foundation and floor, removing the old cabinets and shelves and installing new hardwood shelves, modifying and improving the water system, and installing new electric stoves (the wood stove will be retained). As you see, this is quite an ambitious project and in order for it to be successfully completed, a great amount of volunteer time and effort will be required. In order to facilitate the planning and scheduling, it would be of great assistance if we knew how many volunteers will be available and also if they have any special skills which would be helpful. If you could spare some time this summer and would like to help, please call Mike Hendrickson at 278-9856 to volunteer.



# Kayaking 1979

By John Schell

With the deep snowpack in the mountains, 1979 should be a great year for WMC kayakers. A schedule which covers trips and tours through May is included in this Rambler. Hopefully, a more complete schedule for the summer will be ready for the May Rambler. The schedule will include trips for all levels of ability, beginner through advanced. Please take the ratings seriously and do not try to go on trips above your ability. If you have interest in a trip that is not scheduled, do not hesitate to call your friendly kayaking director.

As in the past, a "tour" refers to a multi-day trip on which we travel self-contained, staying overnight on the river. This kind of travel requires a certain degree of confidence in the Eskimo roll and in whitewater technique. A kayak "trip" refers to running a stretch of river and returning to our cars to camp at night. Kayakers new to our program must go on some trips in the beginning of the year so that we can assess your ability before you will be allowed on tours. Although no formal policy exists for assessing an individual's kayaking ability, it is hoped that the kayaker will take into account his or her ability when considering a particular trip. This does not mean advanced beginners cannot go on intermediate trips, but it does mean a rank beginner cannot go on an intermediate trip. The trip leader and/or kayaking director will make the final decision as to whether a kayaker is capable of going on a particular trip.

At this writing, we have had mostly bad luck with permit applications. We received two permits--the Yampa and Middle Fork rivers. The Middle Fork has been filled from the original trip list submitted in January. We will be exploring new non-permit stretches of rivers this year such as the South Fork of the Boise. There is a special push for new kayakers. If you're interested in beginning kayaking, several pool practices and lessons will be given. A limited number of kayaks may be available.

---

## DUES !!

Remember...Dues are due by April 18.

No dues.....no May RAMBLER!



# TRIP Talk talk talk talk tal

Alta to White Pine

By Emily Hall

Despite the presence of Alexis, this trip was a real success. Weather was clear. The snow was stable and we even had a little powder on the way down for attempted figure eights. The trip started at the top of Germania Pass, above the Sugarloaf lift. The group elected to ride up except for Larry Swanson, who arrived late and ran all the way. After a long traverse over to Mary Ellen Gulch, and a climb up a reflector-

like bowl to the saddle, Larry caught up. There is much avalanche exposure the whole trip. The end of the tour was punctuated by a slip off the bridge by a less attentive member of the group, which indicated that the MsD rating wasn't taken too seriously.

Participants: John Sloan, Alexis Kelner, Cal Giddings, Larry Swanson, Charles Hall, and Emily Hall.

## Brighton to Midway

By Jerry Horton

The Brighton half of the March 10 Midway (Homestead) tour got started at 6:00 a.m. in the cold darkness of the Parleys Way K-Mart Parking lot. Actually, this was the start of the car shuttle to Snake Creek, and the three mosochists doing the car spot were Phyllis Robison, Andy White and Jerry Horton.

The tour left the Big Cottonwood parking lot at 8:45 a.m. via the UTA bus for Brighton. Two reasons for the bus: (1) to save energy and (2) to avoid a late trip to Brighton to retrieve the cars.

The group left Brighton about 9:30 a.m. for the only good part of the trip, the part to Catherine Pass. As the pass was approached, Coney Island sounds were and 54 people were found to be there when we finally arrived about 11:00 a.m. Ah, wilderness!

Snow conditions weren't really good to Catherine Pass. Wax jobs varied from blue with a purple kicker, to purple with a red kicker, to red with klister, klister on klister, and one coward on skins.

The snow turned into horrible stuff in the head of Dry Creek. The traverse to Ant Knolls Pass was even worse, and it was agreed that it had to be the worst tour of the year. The weather, though, was perfect.

We finally worked through slop and crust to the Snake Creek-American Fork snowmobile trail and were really glad to find it. At last, we could slide.

The Homestead was reached about 4:00 p.m., and the group split up. Some swam, some sat, and some went home.

All in all, it was an interesting trip which no participant will probably ever want to repeat. It could, however, be a good tour earlier in the year on good snow.

Participants: Phyllis Robison, Andy White, Paul Rubenfeld, Michelle Sparks, Scot Hamel, Dave Morris, and Jerry Horton. A good group of strong, capable skiers; and they needed to be just about every foot of the way.

## Toll Canyon

By John Veranth

Arriving at Summit Park, we were greeted by our trip leader's reports of the recent warm, sunny weather and quickly discovered that January's dry powder had been replaced by icy crust and corn snow. Opinions on the appropriate wax ranged from blue to red resulting in considerable experimentation during the tour. Starting at Dave's house we dropped down into the creek bed and snaked our way through the brush in the lower part of the canyon. The terrain became more open as we approached the ridge separating Toll Canyon from Lambs Canyon. A lunch stop was made in the bowl below Murdock Peak. After lunch we continued to the pass overlooking Park West and four ambitious skiers continued to the summit of Murdock Peak. The effort of climbing Murdock was rewarded by a clear view into Millcreek and an exciting descent across untracked, open slopes. The return provided ample opportunity to practice turns among the trees. Arriving back at Summit Park everyone agreed that the tour had been worth the effort.

PARTICIPANTS: Dave Smith, leader; Denise Basse, Trudy Bach, Carol Cox, Lyman Lewis, George Swanson, John Riley, Susan Schott, Mart Schweiser, David Neal, and John Veranth.

## Cardiff Fork

By Frank West

Our party consisted of 14 persons. We started up the trail at 9:45 a.m. The day was sunny and cool at about 32 degrees. We were blessed with twelve inches of new powder snow. These conditions made for a perfect tour.

We had all agreed to stay together, and accepted the fact that we were there for the fun of the outing rather than try to see how fast we could get from point A to point B.

At about 12:45 we reached the Cardiff Cardiff mine where we had lunch. This was 3.5 miles up the canyon. During this break six of the more hearty skiers went a short distance up the open slope to the west to experience the beautiful light powder.

Everyone enjoyed the return trip. Hardly anyone fell.

Back at the car at 2:30 p.m. Everyone said they did indeed have a wonderful time, and were glad we all stayed in one group.

Participants: Leader Frank West, Bill Dixon, Sam Allan, Clint Lewis, Ellie Ienatsch, Sam Kingston, Jerry Powelson, Barb Pollyea, Trudy Bach, Pat Brestovan, Dot Warnecke, Joy Levetan, Judy Broxton, and John Dawson.

## Bench Creek

By Bill Viavant

Jay had phoned the Silver Spur in Francis to save some home-made cinnamon buns (they weigh in at a pound each), so from 8 to 9:00 a.m. we gorged, and by 9:30 were off up the gentle canyon. Within a mile we left all tracks, and had the whole place to ourselves. About six miles in we crossed a ridge and started down a parallel canyon, didn't like the looks of the brushy bottom, so recrossed to return to

Bench, trusting that Jay wouldn't lose us. About then, Bill got quadruple whammy cramps, held up the group for a couple of half-hour stretches, but finally made the top of the ridge. We then sailed down what we labeled "Charley Horse Canyon" back to Bench and on out. A beautiful day, a woodpecker, a new fox-hole, squirrels, chickadees, a buzzard (waiting patiently for Bill to stop moving), and NO snowbuggies! Back at the Spur for yet another Bun (and/or Brew), we played birthday and won! Six January's out of eleven people, and one duplicate! In some order: Kathy Marti, Jed Marti, David Neal, Susan Schott, Phyllis Robison, Dan Thomas, Judy Thomas, Don Fabian, Alice Dewell, Jay Dewell, and Bill Viavant.

## Box Elder Peak

By Wick Miller

Rolf has told me that I gotta write up this here trip to Box Elder for the Rambler, and if I gotta do this, I told him I reserve the right to lie. And Rolf told me OK, I could go ahead and lie, if I wanted.

Our group met at seven AM, Sunday morning, Jan. 28, at that noted gourmet breakfast spot, Denny's, and by 8:00 we were on our skis, at the head of the trail, just outside of Alpine. The morning was more or less clear, but by noon it had clouded up with light snow, so that we had no view for most of the trip. And it was Cold, Cold, cold all day long.

No official lunch break; too cold to stop, so we nibbled off and on, when hunger struck. By 2:00 we all made it to the top, and signed the register. It took us three more hours to drop down the 5,000 feet that we had gained earlier on.

The Magnificent Seven were: Rolf Doebbeling, Trusty Leader; Bob Myers, Bonnie Baty, Mark Kessinger, John Sloan, Harold Hafterson, and Your Reporter, Wick R. Miller.

I'm sorry, I cannot tell a lie. Everyone made it to the top but me, and for penance Rolf made me write this up.

## Wolverine Cirque By John F. Moellmer

The typical weather we've experienced these last six months failed to materialize. In order to do this tour we were faced with clear blue skies, temperatures in the 40's and very stable snow conditions. Frankly, we were worried. Should a WMC tour even be held with such prohibitive conditions? Hoping for crud and slab snow we voted down an alternative plan to beat our thighs with nail-studded boards and drove up to Brighton in a car pool. It was a gamble but if we had difficulty at some altitude it might be severe enough to justify the trip.

The five of us--Mike Hendrickson, Doug Craig, Kerry Fligle, John Riley and I left Brighton and skied adjacent to the lift line up to Twin Lakes. The snow alternated between wet and powder depending on the exposure to the sun. We were quite heartened. Although not much of a bother then, maybe above the lake the snow would get really lousy. We hurried in anticipation. The traverse across the north face of Millicent was a dramatic view of many peaks and granite headwalls. It was so awesome we even forgot to suffer.

Lunch was held on a flat, warm, granite slab in view of the entire Wolverine Cirque. Cornices ringed the circular headwall and pine trees and dead snags clung to the walls. We packed up our gear and scraped our climbing waxes off (except Doug who figured he needed some brakes down the slope we were going to ski). The skiing down was just like the day had been. Smooth, untracked snow ran sharply down and out to the Twin Lakes below. Traverses and telemarks brought us to the lakes in a beautiful run in fine snow. We felt pretty bad about it.

The run out to Brighton was via the regular ski runs. We felt much better then. Kerry got run off the slope by a lift-crazed downhillier, Mike tried to

make a ski slope of his own, only John R. did well. Men blanched, women and children withdrew in fear when John came barreling through.

I wonder if Emily, Charlie, Cal and Alexis had an awful day, too.

## Ontario Canyon

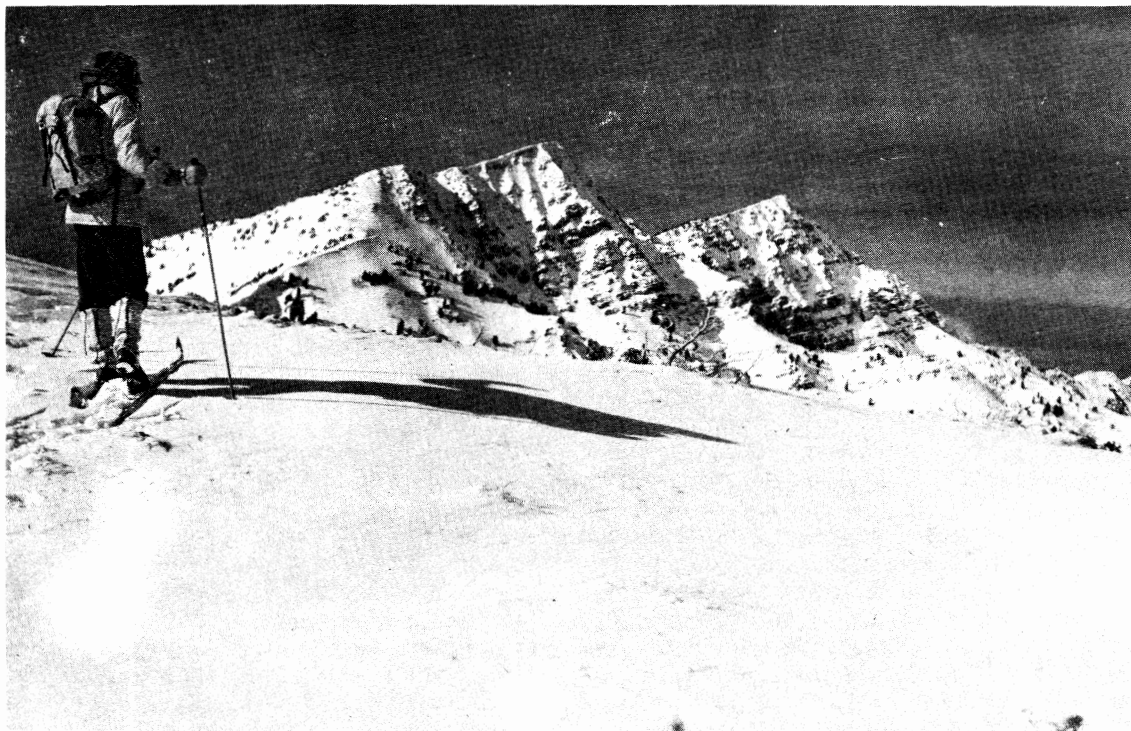
By Doug Stark

Driving past Park City and the last operating mine in the area, we parked the vehicles and waxed up the skis. A storm the preceding Thursday had left an abundant supply of fresh fluffy powder almost knee high above our skis. We followed the canyon on a trail made by earlier skiers up to an open area. We waited for the group to gather and then made our own way to the ridge. Around us there were grand expanses of untracked smooth snow. The day was sunny and clear and vistas in all directions could be seen. Mt. Timpanogos peaked through a break in the clouds. The Uintas to the east and the Brighton area to the west were clearly visible.

A lone skier cut across the open slope and beat us to the summit. Since it was windy there some of us scraped wax off, and we all headed down off the summit to the shelter of nearby trees for lunch.

After lunch George Swanson, our leader, took us through the Aspens and evergreens. Winding our way down the steep slopes, the deep powder slowed our progress which helped us beginners. The powder softened our falls but was exhausting getting unburied and back on our skis. Soon we were back to the cars after completing the loop trip.

Enjoying the beautiful day and snow were Marilyn Tuller, Carol Lee Gunn, John Riley, Pat Klinger, George and John Swanson, Pat Brestovan, Thomas Chancellor, Ann Cheves, and Doug Stark.



Judy Ballantyne surveys the summits to the north of Deseret Peak in the Stansburys. WMC trip on Mar. 3, 1979. Photo by A.Kelner.

# Holubar

MOUNTAINEERING LTD.

**CLIMBING/BACKPACKING  
SPECIALISTS SINCE 1946**

Exclusive Holubar Clothing & Gear  
Bags, Tents, & Packs • U.S.G.S. Maps

**SEW-IT-YOURSELF KITS  
RENTAL GEAR**

Call us for Expert Advice  
4385 S. State St.  
**261-3071**


  
Card No.  
Valid only in U.S.

# From the Hiking Committee

By Trudy Healy

Sorry, folks, there are just too many of us. Hiking population explosion. Everybody, it seems, has found out what fun it is to be in the mountains or in the desert. How would YOU feel, rambling along in solitude, and a mob of 50 or 70 or more happy hikers passed you! You'd hide behind a rock and run to the privacy of State Street!

What I mean is, we have to restrict our group size, if possible, before the Forest Service forces us to do so. Foothill hikes ok, no limitations. Only fools would be stomping around in mud and soft snow anyway. So probably we won't have much competition.

Easy and medium hikes, rated up to 6.5, often run on very popular trails, so let's split the groups. If more than 15 show up, the leader is entitled to appoint a sub-leader, send him on an alternate route, a different destination, or have him take the super hikers ahead of the main group.

For safety reasons (if no other), registration is required for hikes of grade 7.0 and above. If more than 12 want to go, we're looking for another leader for a different route, or we re-schedule the hike.

We have planned a lot of weekend trips. These are limited to 12 participants; nonmembers will be on a stand-by basis (unless they have a 4WD and it's needed for the trip--after all, we are reasonable!). Usually, there's no limit on car camp trips.

Your new Hiking Committee figured all this out, though one member didn't want any restrictions. We drowned him in a vat of beer, and that was that.

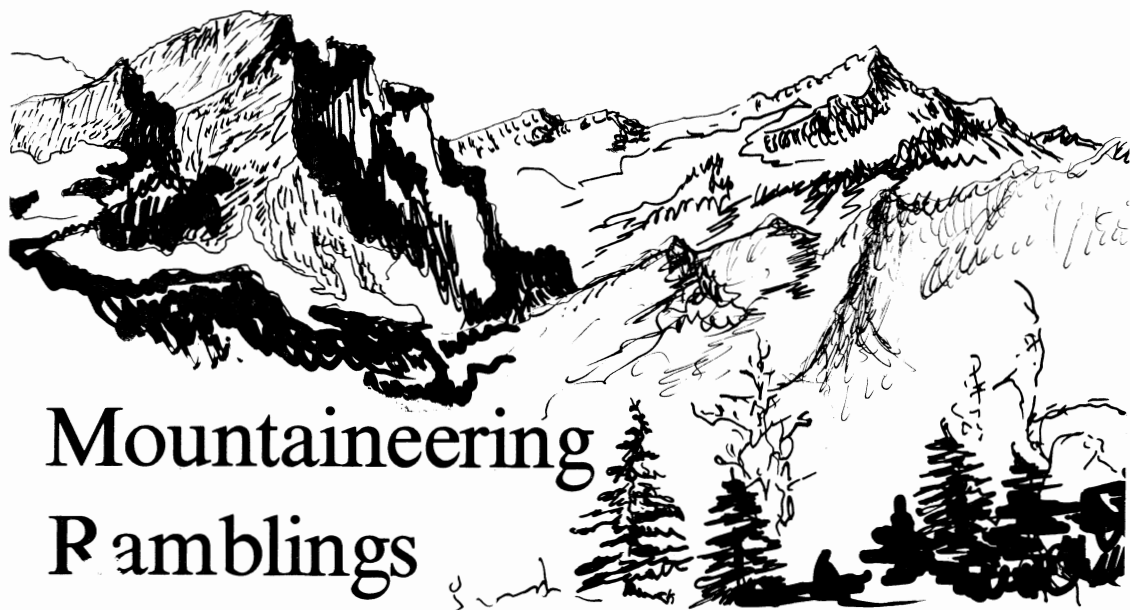
Another great idea, however, is mostly your hiking director's responsibility: Trips from now on will start at the time specified!!! If this sounds cruel, just consider the poor fools who show up on time and have to wait 20 or more minutes in all kinds of weather, instead of being comfortable in bed, or having another Coors for breakfast like everybody else (or at least Gottman). Why don't you make a point of arriving five minutes early instead of 15 minutes late!?

Dogs on hikes need Club membership and permission of leader.

CHILDREN: I suggest that we permit children on hikes up to grade 6.5 if the leader has no objection. THEY WILL BE THE SOLE RESPONSIBILITY OF THE ADULT WHO BRINGS THEM! (I have a daughter who climbed the Swiss Matterhorn when 12 years old--so I believe in starting them young.)

You have a great committee working for you: Fran Flowers, Dorothy Holland, Lyman Lewis, Joy Ray, John Riley, John Veranth and Neff Walker. George Healy and Mike Hendrickson were most welcome ex-officio attendants at the first meeting in March.

Thanks, all of you who offered or accepted to lead hikes! Please address complaints, suggestions, and further offers to lead hikes, etc., to me: Trudy Healy, 3978 Emigration Canyon, Salt Lake City, Utah 84108, 583-3411.



# Mountaineering Ramblings

By Bob McCaig

For those of you who have now grown tired of your repeated head-plants between your skis, the following may bring on thoughts of better days to come. The club summer mountaineering activities will begin again on Thursday night, April 5, at Pete's Rock. Pete's Rock is located at approximately 5500 South Wasatch Blvd. If you are unable to comprehend addresses, it's the large quartzite rock to the east of Wasatch Blvd. with the big numbers painted on it. All members are welcome to participate. Those familiar with the club proceedings gather about 5:30 to 6:00 p.m., do some occasional bouldering, drink beer, and watch those unfamiliar with the club proceedings rope up and embarrass themselves with their early season climbing form. Those who aren't rusty will be ignored.

If you are an experienced climber, but new to the club, you will find the club structure fairly informal. The regular Thursday nighters are often content to stand around, drink beer and B.S. until the hamburgers are ready. (No hamburgers are cooked at Pete's Rock.) If you want to climb, it is best to arrive early, as there are usually a few gung-ho types around. In the event everyone is standing around, feel free to ask someone to climb, as that is usually enough to jolt them out of their apathetic rut.

About the first Thursday in May we will retreat up to Storm Mountain for the rest of the summer. We will once again need volunteer hamburger cookers. For those of you who have difficulty making friends, this is an easy way to make a lot of people like you for at least one evening. Sign up with me early for an assured reservation.

Club members interested in learning how to climb will want to sign up for the beginning climbing school taught by Paul Horton. For more details on the course, there is an article elsewhere in this Rambler.

Over the next several months I will be trying to put together a schedule of events for the summer. I will be glad to accept any ideas for activities. Please note that I have moved since the membership list was last published, and my phone number is 487-6868.



# Beginner Climbing Course

The goal of the BCC is to teach beginners the basics of snow and rock climbing. The course will provide the skills and knowledge required to follow experienced climbers up technical routes, and a background for WMC experience climbs and mountaineering high camps. Because climbing and climbing classes can be dangerous, students are expected to pay attention and to take the instruction seriously.

WHO: WMC members only. No experience required--only an interest in learning to climb.

WHEN: Mandatory registration with Paul Horton (364-0728) by Wednesday, April 25. An evening session will be held Wednesday, April 25, at 6:00 p.m., at John Gottman's house (1074 East 600 South). Outdoor sessions will be held on April 28 and May 5 at a time and place to be announced. The evening class will last a few hours; the day classes, most of the day. Attendance at all sessions is required.

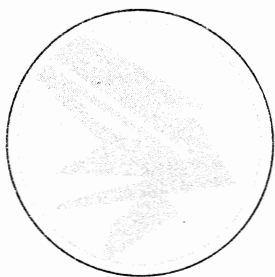
FEE: \$10, payable at the first session.

EQUIPMENT: Boots or rock shoes, hart hat, nylon webbing (1 inch x 20 feet), three carabiners and a brake bar (or five carabiners) are required. For the May 5 class an ice axe will be necessary. Bring any other gear you may have, such as nuts and slings. Only the webbing is required for the first class.

Borrow the gear if you can, buy it if you must, but have it! Some ice axes may be available for loan and it is possible to rent them from local climbing stores. If you have questions or problems concerning equipment, then don't get any until after the first class when we will discuss it. However, you must bring the webbing to that class.

WARNING: The class is limited to 20 participants and it is usually filled quickly, so register soon. For further information and for registration, call Paul Horton.





WASATCH MOUNTAIN CLUB  
3155 HIGHLAND DRIVE  
SALT LAKE CITY, UTAH 84106

SECOND CLASS  
POSTAGE PAID  
AT SALT LAKE  
CITY, UTAH.  
(NO. 053410)