



WASATCH MOUNTAIN CLUB

The Rambler

Vol.58, No.10, OCTOBER, 1981

Wasatch Mountain Club

Persons wishing to become members of the Wasatch Mountain Club should request, either by telephone or in writing, an application form from the Club's Membership Director. Upon such notification, prospective members will receive free two consecutive issues of the Club's Schedule of Activities and a full application form with instructions for joining. Dues are as follows: \$10.00 Regular (single), \$15.00 Spouse (double) and a \$5.00 initiation fee.

DIRECTORS

MIKE TRESHOW
PENNY SMITH
DICK HONN
KERRY AMERMAN
PETE HOVINGH
TERESA FARR
and
LARRY HOSKINS
SHERIE PATER
JOHN RILEY
TOM SILBERSTORF
LEW HITCHNER
WICK MILLER
DEBBIE CARLSON
DONNA SNOW
MARILYN and
KERMIT EARLE
KARIN CALDWELL
CHARLIE KELLER
STEWART OGDEN
O'DELL PETERSEN

BICYCLING COORDINATORS TRUSTEES

PRESIDENT 467-1022
SECRETARY 277-4154
TREASURER 278-9397
RAFTING 943-6322
CONSERVATION 359-4791

ENTERTAINMENT 531-1112
MEMBERSHIP 268-9122
HIKING 278-6661
LODGE 485-2567
MOUNTAINEERING 359-5310
SKI TOURING 583-2439
KAYAKING 583-5160
PUBLICATIONS 583-5039
485-5190

268-2199
942-6065
467-3960
359-2221
355-7216

The Rambler

THE RAMBLER (USPS 053-410) is published monthly by the WASATCH MOUNTAIN CLUB, Inc., 3155 Highland Dr., Salt Lake City, UT 84106. Tel. 363-7150. Subscription rates of \$6.00 per year are paid for by membership dues only. Second-Class Postage Paid at Salt Lake City, Utah. POSTMASTER: Send address changes to THE RAMBLER, Membership Director, 3155 Highland Dr., Salt Lake City, UT 84106.

CHANGE OF ADDRESS

This publication is not forwarded by the Post Office. Change of address and any direct correspondence regarding the mailing of THE RAMBLER should be directed to the Membership Director.

Deadline for THE RAMBLER is the 15th of each month.

TYPE (double space) your articles and schedules, indicate your name and phone number on your articles, prints, etc., and mail to (or drop by):

WASATCH MOUNTAIN CLUB
ATTENTION--RAMBLER EDITOR
3155 Highland Drive
Salt Lake City, UT 84106

DONNA SNOW, Managing Editor

Thanks to: Torrie Duncan, Suzette Sparks, Dale Green, Allen Olsen and David Jolley.

CLUB ACTIVITIES -OCTOBER 1981

Hiking General Comments

Hiking Ratings: The higher the number, the harder the hike. Considered are length, altitude gain, and difficulty of terrain. Up to 4.0 it's easy, 4.5-6.5 sort of middling. 7.0 and up is difficult, and registration with the leader is necessary. CALL leaders between Monday and Thursday of the week of the hike or weekend trip. If you cannot keep a date, call to cancel, it will give others a chance to participate.

- Oct. 1 THURSDAY NIGHT ROCK CLIMBING AT STORM MOUNTAIN. Yes, folks, climbers
Thurs. still gather in Oct. Food and drink not guaranteed at Storm Mountain
 Picnic Area, but come anyway and see what's going on.
- Oct. 2-4 CANYONLANDS CAR CAMP - This year's trip is like last year. Expect
Fri-Sun great weather, good hiking companions, exceptional food and merriment.
 Limit 12. Sign up by Sept 25. Leaders Kay Flanagan, 277-3486 and Joy
 Ray, 272-3149.
- Oct. 3 LEISURE HIKE - LAKE SOLITUDE FROM BRIGHTON - Rating 1.5 plus depending
Sat on return. Meet leader Louise Hollander, 277-1416, at 9:00 a.m. at
 mouth of Big Cottonwood Canyon.
- Oct. 3 HONEYCOMB FORK FROM BRIGHTON VIA TWIN LAKES DAM - Rating about 6.0.
Sat Meet leader Jim Dalglish, 295-8749, at 9:00 a.m. at mouth of Big
 Cottonwood Canyon.
- Oct 3 SUNDIAL VIA LAKE BLANCHE (Exposure!!) Rating 8.5. Elevation
Sat 10,120. Meet leader Walter Haas, 534-1262, at 8:30 a.m. at mouth
 of Big Cottonwood Canyon.
- Oct. 3 WESTERN PARTY! Oct. 3 at 7PM at the Lodge. Whooping, hollering, and
Sat square dancing with the WASATCH RASCALS, the hottest square dance
 musicians in these parts. Dinner not quite left to (pot) luck:
 A-F: Bring a salad or cooked vegetable
 G-M: You bring a main dish
 N-R: Please, a dessert
 S-Z: Bread, rice, etc/appetizer--LIQUOR AT COST.
 Guns and money (\$4.00 per person) collected at door. Don't let the
 admission price keep you away--you are getting top-notch entertainment
 this evening. For more info, call Teresa at 531-1112 or Larry at
 268-9122.
-

Cover photo: Thursday night hike, June 18, 1981. Salt Lake Overlook, Desolation Trail. Photo by: Larry Hardebeck. Summer is over for another year and so are the Thursday night hikes. Thanks go to Dale Green for leading these weekly outings for yet another year.

- Oct. 4
Sun SILVER FORK - DAYS FORK RIDGE, GREENS BASIN TO FLAGSTAFF - Rating 7.0. Beautiful color if the weather is right. Meet leader Charlie Keller, 467-3960, at 9:00 a.m. at mouth of Big Cottonwood Canyon.
- Oct. 4
Sun TIMPANOGOS RIDGE FROM TIMPONEKE - Rating about 14.0. Be prepared for a long day with brush (long pants) and possible return after dark (flashlight, extra food and clothes). Meet leader Clay Benton, 277-2144, at 7:00 a.m. at 45th South and State Street parking lot in front of Holubar.
- Oct. 4
Sun ALPINE LOOP BIKE RIDE - Come out and enjoy the changing of the leaves in this land of Timpanogos. The ride is about 34 miles with about 6 miles of steep climbing. Helmets are requested for this ride. Meet Guy Benson (phone 582-5856) at the Alpine Crossroads Store and Gas Station at 8:00 a.m. Take the Alpine exit from I-15 (first one after the point of the mountain) and go east approximately 7 miles to meeting place.
- Oct. 8
Thurs THURSDAY NIGHT ROCK CLIMBING AT STORM MOUNTAIN
- Oct. 9-11
Fri - Sun CANYONLANDS BACKPACK - Salt Creek. For details call Bill Yates (723-3853). Limit 12.
- Oct. 10-12
Columbus Day
Weekend ZIONS NARROWS. Leader Mike Budig, 328-4512, plans trip through Narrows Call for details and reservations before Oct. 7.
- Oct. 10-12
Columbus Day
Weekend Call John Riley, 485-2567, to schedule or contact others interested in out-of-town trip.
- Oct. 10
Sat BURCH HOLLOW TRAIL CLEARING. Elmer Boyd, 969-7814, wants to complete the clearing of this trail in Millcreek Canyon which was started on July 25. Meet at Olympus Hills Bagel Nosh at 9:00 AM. Bring trail clearing tools and beer or other refreshment. We will try to get extra tools from the Forest Service.
- Oct. 10
Sat WHITE BALDY FROM RED PINE (loose rock and scrambling). Rating 9.0. Elevation 11,321. Meet leader George Swanson, 466-3003, at 9:00 AM at mouth of Big Cottonwood Canyon.
- Oct. 11
Sun TRASCANYON BIKE MADNESS - Meet Lori Webb (phone 566-0868) at 8:00 a.m. at the mouth of Big Cottonwood Canyon for a fools' delight bike ride with some riding on dirt or gravel roads. The ride will go up Big Cottonwood Canyon with a stop at the Brighton Store, over Guardman's Pass to lunch in Park City, down Parley's Canyon and over to Emigration Canyon with a stop at Cromptons for refreshments (liquid or otherwise) and then back to the starting point. Registration is necessary for this one!
- Oct. 11
Sun OQUIRRH RIDGE FROM BUTTERFIELD CANYON. Rating about 5.0. Meet leader Norm Fish, 487-0937, at 8:30 AM at Simpson Ave. and 1300 East (near Sugarhouse Park).
- Oct. 11
Sun PFEIFFERHORN. Rating 10.0. Elevation 11,326. Meet leader Andy Schoenberg, 363-7469, at 8:30 AM at mouth of Big Cottonwood Canyon.

- Oct. 12 LEISURE HIKE - BRIGHTON BOWL FROM LODGE. Leader needed. Meet at 9:00
Mon AM at mouth of Big Cottonwood Canyon.
COLUMBUS DAY
- Oct. 15 THURSDAY NIGHT ROCK CLIMBING AT STORM MOUNTAIN
Thurs
- Oct. 17-18 OPEN WEEKEND AT THE LODGE - Carolyn Andree is host for what we hope is
Sat-Sun a quiet weekend of fall colors. Call Carolyn for information. Bring
\$1.00 per night, food, utensils, sleeping bag, etc. Friday night is
left to the discretion of the host.
- Oct. 17-25 DEER SEASON - No local hikes scheduled.
- Oct. 17-18 CAPITOL REEF CAR CAMP Leave Friday evening. Call leader Mike Hendrick-
Sat-Sun son (942-1476) before October 14 to register.
- Oct. 17-19 ZION NATIONAL PARK From near Kolob Lake to Angels Landing. 18 mile
Sat-Mon backpack. Leave Friday night. Leader Russell Patterson (973-6427).
register by Wednesday, October 14.
- Oct. 18 BIKE RIDE TO FARMINGTON - This ride will go from Sugarhouse Park to
Sun Farmington with a stop for lunch in Farmington. Distance is less
than 50 miles. Meet at the park at the 15th East Entrance at 8:30 a.m.
Leader: John Peterson (phone 277-8817)
- Oct. 22 THURSDAY NIGHT ROCK CLIMBING AT STORM MOUNTAIN
Thurs
- Oct. 24-25 PILOT PEAK, NEVADA - Car Camp. Leave Friday night. Rating 9.0
Sat-Sun Sign up before October 21, Wednesday. Leader Dale Green (277-6417)
- Oct. 24 HATCH PEAK (House Range) - Rating 6.0 Elevation 9,655. Plan for early
Sa + start and fine hike to west desert. Contact leader Carl Bauer
(355-6036) for details.
- Oct 24 ANNUAL CLIMBERS' REUNION AND SLIDE SHOW - Time 7:30 p.m. at the home
Sat of the WMC family (Williams-Metke-Collins: Jim, Linda, and Danny) which
NOTE is at 2257 E. 9840 So. in Sandy (phone 942-4659). Bring your own
DATE beverage, some snacks or munchies to share, and your best slides (edited
CHANGE... please) or snapshots of this summer's mountain trips and climbs.
- Oct. 25 SHOW AND GO BIKE RIDE - Meet at the 15th East Entrance of Sugarhouse
Sun Park at 9:00 a.m. for an easy Sunday Morning ride. This will be the
last ride of the season and the destination will be decided by the
group. Leader Wally Fort (phone 534-0915).
- Oct. 29 THURSDAY NIGHT ROCK CLIMBING AT STORM MOUNTAIN
Thurs

- Oct. 30-
Nov 2
Fri-Mon GRAND GULCH BACKPACK - This four day backpack which leaves Thurs. evening and returns Mon. night will visit most of the best Indian ruins and rock art areas of Grand Gulch. Participation will be limited to 12-14 people. Drivers will be compensated according to club guidelines, gas plus 10cents a mile (perhaps \$25-\$30 apiece). Call Chuck Ranney to sign up - Home (363-7285) or work (355-0333)
- Oct. 31
Sat TWIN PEAKS VIA DEAF SMITH - Rating 12.5 Wonderful scenery; steep terrain. Early start for those contemplating witchery and wizardy. Meet at mouth of Big Cottonwood at 7:30 a. m. Leader Ilka Allers 355-2057 (H) 486-2471(W).
- Oct.31
Sat HALLOWEEN PARTY - 7:30 \$3.00 per person. On this holy children's night let us celebrate like kids. We're not kidding:
WEAR a costume and maybe win a contest.
BRING a bag of goodies for an evening of trick or treading. (Remember? one Snickers = one Hershey Bar).
TELL us a story that scares us at Ghost StoryTime and maybe win another contest.
PREPARE yourself for a dare-walk in the woods.
Adult activities will include dancing to another fine band and drinking a bewitching brew (at a nominal cost.) Mom better feed you before the party. If more information is needed call Teresa 531-1112 or Larry 268-9122.
- Nov. 1
Sun RAFTING WORK PARTY - We have a lot of maintenance work to do this year, but if you do your part and show up, we'll probably be able to skip the spring work party. I'll need many bodies. You bring your grubbies, I'll bring the beer. The time will be 10:00 a.m. The Storage Center, 4317 So 300 W., #214. If the weather is foul, it will be held one week later, same time. Any questions, call Kerry at 943-6322.
- Nov. 1
Sun LOOKOUT PEAK VIA KILLIAN GULCH - Rating 6.0 Meet the north parking lot at Hogle Zoo at 8:30 a.m. Leader Shelly Hyde (583-0974).
- Nov. 1
Sun MT. OLYMPUS, NORTH FACE. Rating 8.5 Exposure and rock scrambling are to be expected. Meet at 8:00 a.m. Rain or snow will cancel this trip. register with leader Nancy Shearin, 364-1964 (H) or 581-6535 (W).
- Nov. 7
RIVER RATS' ANNUAL YEAR-END BASH AT THE LODGE - (Helmets required)
It's time to pay tribute to Class IV rapids and Class VI partying. Happy hour will commence at 6:00 p.m. Bring a dish for pot luck and your slides from this year's trips. Sleeping bags may also be in order in case happy hour extends beyond reason (this depends on your endurance factor, and on how many times you plan to attend.) Beer and wine will be available at cost; there will also be a \$2.00 charge at the door (for the lodge and misc. overhead). If there are any questions, call Margy Batson (328-1895) or Kerry Amerman (943-6322) (But not after 10:00 p.m., PLEASE!!!)
- Nov. 7
Sat REYNOLDS PEAK VIA DOG LAKE - Meet leader Elmer Boyd (969-7814) at the mouth of Big Cottonwood at 9:00 a.m.
- Nov. 7
HOUNDS TOOTH - Rating 5.0 Meet leader John Riley (485-2567) at the mouth of Big Cottonwood at 9:00 am

- Nov. 8 GRANDEUR PEAK FROM CHURCH FORK - Rating 4.5 Meet leader Martha
Sun Varanth (278-5826) at Olympus Hills Bagel Nosh at 9:00 a.m.
- Nov. 10 RAFTING PERMIT PARTY - I say party because we're good at that and
Tues then maybe lots of folks will come. The success stories of the Sept.
Westwater permits show what can happen with some concerted effort.
With many petitions to Odin, BLM, etc. we might get to see Lodore and
the Yampa again. Plus a few new rivers under consideration. So
fill your wineskin and bring it to Kerry's place at 2562 Canterbury
Lane (7650 South off of 2700 East). I will supply more detailed
directions to confused bystanders where necessary. Time 7:30p.m.
phone 943-6322; but anyone calling after 10:00p.m. will be keel-
hauled.
- Nov. 14 UPPER MILLCREEK CANYON -No specific destination. Rating 6.0 Meet
Sat at Olympus Hills Bagel Nosh at 9:00 a.m. Leader John Dawson
(262-7061).
- Nov. 15 SETTLEMENT CANYON (OQUIRRH RANGE). Rating approximately 6.0. Meet
Sun at parking lot at 13th East and Simpson Avenue. 8:30 a.m. Leader
Norm Fish (487-0937)
- Nov. 21 CITY CREEK CANYON. Rating 4.0. Meet leader Carl Bauer (355-6036)
Sat at the road junction gate of City Creek Canyon at 8:30 a.m.
- Nov. 22 STANSBURY PEAK - Rating 5.0. Meet at the parking lot at 13th East
Sun and Simpson Avenue at 8:30 a.m. Leader John Riley (485-2567).
- Nov. 26-29 GRAND CANYON BACKPACK - Tanner Trail. Limit 12 people. Call leader
Thanksgiving Russell Patterson (973-6427).
- Nov. 24-28 SOUTHERN UTAH BACKPACK - Details in next issue. Leader John Veranth
Thanksgiving (278-5826).
- Nov. 26 THANKSGIVING at the lodge on Thanksgiving Day, Thursday, November 26.
Thanksgiving More details in November issue.

Holubar

WE'RE MOVING!

As of Oct. 1st, we will be opening in the Olympus Hills Mall. As we begin our sixth year in the Salt Lake area, our larger and more convenient new location will enable us to continue to provide you the best in top quality equipment and friendly knowledgeable service for your mountain and whitewater activities.

We would like to invite our friends and customers from the WMC to stop by and see our new store--right on your way to the mountains in the Olympus Hills Mall on Wasatch Blvd. at 39th South.

3975 So. Wasatch Blvd.
261-3071

	Hours
M, T, W,	10-6
Th, F	10-9
Sat.,	10-6

From the President

by Mike Treshow

Great news! Our next General Membership Meeting (that's the one we hope everyone in the club comes out for) will be held at Zion's Lutheran Church on October 21. The meeting will feature a medley of superb slides of WMC activities. Semi-professional photographers (they'd like to be paid but mostly aren't) generously will be donating their time. Slides and narratives include Trudy Healy on hiking, Larry Hoskins on boating, Louise Hollander on wildflowers, and Lew Hitchner and/or Rene Jackson on mountaineering. What a night!

There will also be a brief, honestly, brief (no more than 15 minutes, I promise) business meeting. This will be to let you, especially our over 100 new members, know what we've been doing and plan to do. We'll also pass out the newly prepared list of policies and regulations.

PA PARRY AWARD:

Each year we present this award to the individual who has contributed the most in time, activity, etc. to the Club. It is our most significant recognition of service to the club and has received way too little publicity. The Governing Board decides on the recipient, but we'd like to have more input. If you would like to propose someone for this award, please phone anyone on the Board. Past recipients have included:

1980	Bob Myers	1973	Alexis Kelner and Fred Bruenger (jointly)
1979	Larry swanson	1972	Dale Green
1978	Larry Hoskins	1971	Cari Bauer
1977	John Gottman	1970	No award given
1976	Dale Green	1969	Bud and Fern Reed
1975	George and Georgia Randall		
1974	Betty Botcher		

Congratulations again to all of the above. If there are any errors, my apologies, but please let me know what they are. Also, could any of you "old timers or recipients" extend this list back farther? This seems to be the best we can do for now.

One more thing -- Since its inception over 50 years ago, the WMC has prided itself on being non-sexist (not to be confused with asexist). Most of us still feel this way, so don't be distraught by the "First Annual All Women's Canoe Trip".

NOTES FROM THE RAMBLER EDITOR

by Donna Snow

It seems that in recent months the increase of hand-written articles and schedules has been occurring. Please TYPE all items submitted for publication in the Rambler.

Also please try to limit Trip Talk articles to an approximate two pages. This will help me immensely. I appreciate your co-operation. Keep writing!

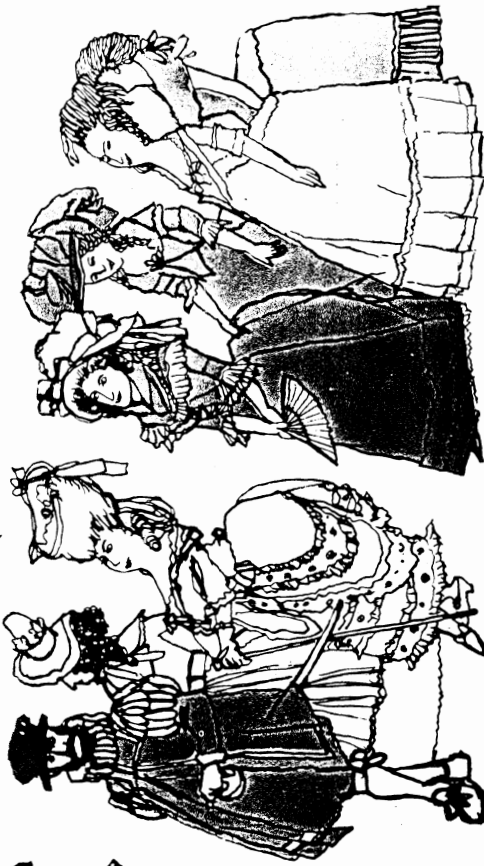
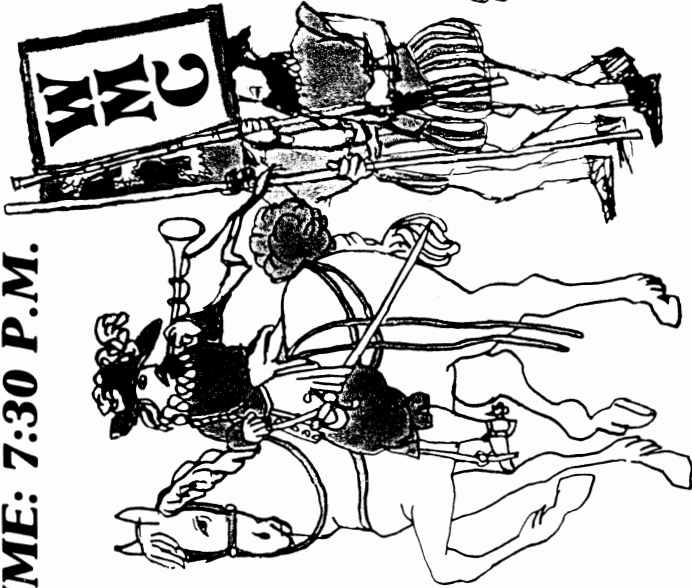
THE HALLOWEEN PARTY

OCT. 31, 1981

TIME: 7:30 P.M.

AT THE WMC LODGE
IN BRIGHTON

(STAY OVERNIGHT IF YOU WISH)



LIVE MUSIC
STARING:
"THE GREAT BAND"

COSTUME
JUDGING
(PRIZES)

COST: \$3.00 PER PERSON
DRINKS AT COST
FUN & LAUGHTER

Mountaineering Ramblings

by Lew Hitchner

This is just about it for the Summer climbing season, folks. We have no day-time climbing events scheduled for this month. There are some evening goings on planned.

First of all, there will be our annual reunion party featuring pictures taken by club members. It's being hosted again this year by Jim Williams and Linda Metke. See the schedule for details. Past years' parties have proved that WMC members and friends can actually take some very good pictures and that they actually do some challenging climbs and interesting mountain trips. However, I ask you to please edit and limit the number of slides you bring.

Secondly we are continuing Thursday night climbing at Storm Mountain through the end of this month. Daylight is short at this time of the year, but there's always a hearty group out there even at the end of October. Hamburgers and beverage will continue as long as a reasonable sized crowd shows up. After the end of this month we'll adjourn Thursday nights to our usual indoor meeting place (the Bird Cage Lounge, 3320 Highland Drive).

I'd like to thank all the club members who provided the food and beverages each Thursday night this Summer. It's important for us to remember that these items are purchased each week by a club member not by the club treasury. His or her only reimbursement is by the people at Storm Mountain who remember to put money in the food box and the beverage box. A different person is usually in charge of food and drink. A considerable outlay of work and cash is always involved (drinks sometimes cost over \$100). Usually these people break even on expenses, but sometimes they come up quite short (as much as \$10 or \$20). That makes for an expensive Thursday night hike or climb. Please do your part to remember to pay and to remind those who might forget or who might not know the rules. Thanks again to those who did their share as cooks or keepers of the coolers.

ATTENTION WILDERNESS WOMEN

Rex Green
Phoenix Institute

China Galland is the author of Women In The Wilderness (Harper and Row, 1980), and a founder of the national organization by the same name: a non-profit corporation which sponsors outdoor ventures and publishes a quarterly newsletter. China Galland is scheduled to make an action-packed October visit to Salt Lake City, so local explorers may wish to hear what she has to say. Galland is a spirited writer, thinker and doer, and she's now helping discover new styles of outdoor exploration for women. Those interested in learning more can consult Galland's widely available book, or attend the upcoming University of Utah Women's Resource Center Fall Conference (where Galland will be a featured speaker and participant), or contact the Phoenix Institute Transition Center (532-5080), which is hosting an outdoor weekend workshop with Galland on October 17-18. Workshop enrollment is limited, and advance reservations are necessary. For more information, call Milly or Cindy at Phoenix Transition, 532-5080.

FOR SALE

ATTENTION GARDENERS: Ariens Rocket tiller, very reasonable. Call Jim Youngbauer 355-1579

Conservation Notes

by Peter Hovingh

WILDERNESS ACTIVITIES

Congressman John Sieberling visited many Utah wilderness areas. The Stansbury Mountains (where a contingency from the Wasatch Mountain Club met with a delegation of Congressmen and local folks from Tooele and Grantsville), Mt. Nebo, Mt. Naomi, Twin Peaks and Mt. Olympus, and the Uinta Mountains were investigated for being included within the great American classification of Wilderness Areas. Letters from Wasatch Mountain Club members to Utah's congressional delegates and to Honorable John Sieberling are essential for the future preservation of these unique mountain areas.

Meanwhile Senator Hayakawa and others have sponsored Senate Bill 842. This bill would prohibit any further wilderness studies or designation. Both Senator Hatch and Garn are inclined to support this bill. Wasatch Mountain Club members are urged to write to their congressmen in opposition to this bill (and the House equivalent).

Congressman _____
House Office Building
Washington, D.C. 20515

Senator _____
Senate Office Building
Washington, D.C. 20510

WATER PROJECTS

Central Utah Water Project: Utah's contribution to the National debt and high interest rates. Although the Central Utah Water Project is large and largely incomprehensible, little attention is given to this project by the public. Wasatch Mountain Club river runners should be alarmed at any further withdrawals of water from the Green and Colorado Rivers. Large withdrawals mean less river running and more competition for permits. The Central Utah Water Project will transport a large amount of water from the Colorado River system to the Great Basin.

In 1965 the public (35,000 people) voted to assure the Federal government that the people of Utah would pay back the cost of the construction of the project as well as 3.222% interest. In 1981 the costs that the people voted on was reached with only 17% of the project completed. A new vote for this 1.5 billion dollar project is expected. However the Central Utah Water Conservancy District Board, which administers the contract, opts to keep the public participation to a new low. They are opting for the other parts of the project (strawberry collector system, the Diamond Fork power system, and the Irrigation System) of the project. The rationale is that if one of these systems is complete (Strawberry collector system) and two others started, then the public will have to approve of the project. Meanwhile, the Municipal and Industrial system will be on the rocks for a few years-driving up the cost to urban water users. Utah's water policy has been to keep the politics out of water projects. With the Central Utah Project, a Judge in Provo appoints the board. The board levies taxes over the entire district. Most of the tax money comes from Salt Lake County, which does not even elect the Judge in Provo. It's all right to keep politics out of water projects-- as long as no taxes are collected for the project!

CONSERVATION NOTES (CONT.)

For more information contact: Intermountain Water Alliance
227 Judge Building
8 East Broadway
Salt Lake City, Utah 84111

(801) 531-7330

The Intermountain Water Alliance is incorporated in the State of Utah. Its goals are to encourage greater participation in water management, disseminate information on water projects, and make sure that recreation and wildlife are considered in water management. Of course, IMA does take contributions from the public, in the form of labor and money.
PROJECT BOLD

Four out of every 36 square miles of public lands belong to Utah. The State was given these sections for educational purposes (State School sections) and must administer these sections for maximum profit. The problem is that the Bureau of Land Management, the Military, the Native Americans, and the National Parks control the lands around these isolated sections. Consequently there is management problems for the State and the Federal governments. Governor Matheson proposed Project BOLD whereby the State consolidate its holdings and move out of the National Parks, Military reservations, Indian reservations, the wilderness areas. Unfortunately the State has proposed to move into the entire oil shale region (including the White River), the coal field of the Henry Mountains, Alton fields, and Kaiparowits Plateau, the oil regions of Rich and San Juan Counties, potash areas of Moab, and some areas next to Utah and Great Salt Lake. The State is soliciting input from the interested citizens. The entire package would have to be approved of by the Federal Government and Congress.

Some points of view: If the State selected more lands that did not contain energy potential, Easterners might not consider Utah as an energy grab. If the State administers the White River for maximal profits, this shows that the state is not interested in wildlife or recreation. Perhaps the consolidation should occur in many more smaller, adjacent regions rather than in large chunks of oil shale.

DILEMMA

Many environmental problems have complex solutions. Question: Is Salt Lake City abandoning its Wasatch Mountain reservoirs and dams?

A trip to Lake Blanche shows three useless dams. Is it better to abandon these dams than to rebuild them? If the dams are abandoned, what is the alternative source of water storage? Is it cheaper to repair these abandoned dams than to build the alternative source?

If the alternative source is a dam in East Canyon or in Heber Valley (Little Dell and Jordanelle projects, respectively), new areas will be inundated. Is the purpose of the abandoning the small existing projects in Lake Blanche and other areas of the watershed to create a shortage of water to bring in costly Central Utah Water?

If you have any strong feelings about the dams in the Wasatch Mountains, let me know. Peter Hovingh 359-4791.

CONSERVATION COMMITTEE MEETING

November 3, 1981 (election night). 721 Second Avenue. 7:30 p.m. We will go over the fundamentals of activism in the environmental area and will cover numerous areas of concern for Wasatch Mountain Club members. Each member is asked to bring at least one concern. For further information call Peter Hovingh 359-4791.

TRIP Talk talk talk

BURCH HOLLOW TRAIL CLEARING

by Clark deNevers

FROM: CREW
TO: CLUB (LESS CREW)
DATE: JULY 25, 1981

Having a wonderful time cutting, clipping, trimming, pruning, severing, chopping, amputating, sawing, trampling grinding, mashing, thrashing, and etc. Wish you were here...and we weren't. Trail is now clear and relatively well marked from the Mill Creek Guard Station up to the 7,000 foot level and beyond. The Forest Service promises to mark an official trailhead sometime soon. CREW: Elmer Boyd, Jerry Evans, Betty Evans, Rob Evans, Randell Whaley, Zelda Bills, Glen Varvil, Mike Tieggle, and Trail Clearing Boss deNevers.

WALKER WEBSTER CANYON

by Lyman Lewis

As usual a good turnout of 21 stalwarts enjoyed the hike to the top of Jupiter Hill. The route selected by the Park City interlocuter was up Empire Canyon, by the old mines of Daly Judge, Daly West, and Little Bell--down the Walker Webster Gulch past the ruins of the Kearns Keith and the Massachusetts Mines. Perfect weather and a compatible group were overawed at Lyman's prattlings of the areas mining and geologic history. Those being educated were, Archie Phillips, John Riley, Earl Cook, Kathy Jones, Glen Varvil, Chris Cooke, Vicky Stone, Larry Messing, Mike Lee, Colleen Flynn, Donna Snow, Helen and Rick Rappaport, Ellie Ienatsch, Linda Mays, Jim Dalglish, Barbara Richards, Jim Watts, Margaret Strickland, and herdsman Lyman Lewis.

SILVER FORK TO HONEYCOMB LOOP

by Sharon Williams

Ever wanted to have GREAT conversation with SUPER people while hiking through STUPENDOUS country --- AND visit the Prince of Wales mine (complete with boilers, pumps, and rustic flywheels); sit on the breath-taking Honeycomb ledges for lunch; AND explore Woodlawn mine (via Fred Padden and flashlights)???? w-e-l-p, Charlie Keller's hike did ALL this and more!! The scenery was magnificent. The "trail" consisted of many animal runs and cross-country work, as well as the usual cut trails - with the added bonus of it being a loop trail for diversity. Conversations were enlightened by such "original" contributions as "is that the light at the end of the tunnel" by Linda Mays - while walking out of Woodlawn Mine. "Everything has to have SOME shape!" said Charlie Keller as a neophyte commented wonderously at a flywheel. "What we thought was virgin metal was merely common ore" hypothesized by the "clever" group - (perhaps it once was said by previous miners!)

Participants were: Charlie Keller, leader; Sharon Williams, Barbara Hendron, Liz Swanson, Doug Stark, Mike Prepkoon, Hank Winower, Fred Frey, Vicki Jones Evans, Paul W. Wehan, Bob Spier, Patricia Schminke, Bob Schminke, Linda Mays, Fred Padden, Chuck Ranney, Mike Trimelon, and Rick Tanner.

NEW FORK LAKES WIND RIVER TRIP

by Paul Wehan

Saturday morning, under skies of considerable cloud, this 18 member group began THE trek. Much to the dismay of the other 17, John Thompson (later nicknamed the orange streaker) took off running in his orange T-shirt with, naturally, a full pack on. The rest of the group followed in a blaze of slowness. Trail chatter consisted of laser technology, sugar-fueled brain function, the Williams wave, split jet streams, the lake effect (such weather discussion seemed only appropriate as we hiked in rain all day), blisters, how to handle a bull session (as in big, black, and mean looking at a "horn to face" range) and stream crossings. The inclement weather made it critical to begin happy hour instantly upon arrival (1:30 p.m.). Cassie began happy hour with the christening of Kerry's hiking boots using her good bourbon. Various wines, spirits, Jim Bean and Nog, kept happy hour flowing well past the late evening hours. Short excursions throughout the day, however, were led out to nearby marshes to see the Moose On the Loose in our very backyard. After salivating over our leader's steak & mushroom dinner and Nina's fresh veges, the floor show began. Chuck's singing Polish jokes, burnt shoes and such were the highlights. During the night, there were several reports of various animal rumblings through the camp just for thrills.

Sunday's day hikes ranged from 22 mile marathons to Vista Pass, to mini marathons to Clark's lakes, to Lost Expeditions to Summit Lake, to Ridge Running and Boulder Hopping in uncharted territory, with the last adventurers bouncing back to camp at 9:00 p.m. Naturally, the orange streaker was seen flashing by many on the homeward trek, with freshly caught fish to whet the pallets of all, later that evening.

Conversations perked when moose came through camp about 8:00 p.m. As the campfire burned out so did everyone's body and people trundled off to sleep.

Monday morning: What??? A totally blue sky - no rain?? But, of course we were packing out !! We left the nearby Continental Divide, and by lunch, were at the Beach (the shores of Narrows Lake) with the cattle!! A mere 45 min. later, the cars were in sight!

Participating Members were: Mike Budig - the Fearless Leader; Dr. John Crofts - a notorious raspberry eater; Nina Dougherty - vege chef supreme; Doug Stark - a Summit Lake searcher; Sharon Coons - the ex-Germany elementary teacher; Richard Jolley - the night watchman; Linda Fary - not to sound "Callous" but she had the biggest blisters and worst sore muscles of the whole group; Chuck Retchmuth - song leader; Chuck Ranney - a mighty tube tenter and early bird starter; Steve Negler - super hiker and giardia expert; John Thompson - full-pack jogger; Tom Dickson - super hiker and bear treer; Mike Warren - the grill fisher cooker hoping for Mountain Marlin, but settled for 2 brook trout; Kerry Fletcher - the pop tart and toaster master; Tom Silberstorf, Sharon Williams, and Paul Wehan - the Ridge Runners and Bouldering Expedition; Cassie Badowsky - the token Polock, OSHA required, with the all time great laugh and energy in the group!!

YELLOWSTONE CANOE TRIP

by Michael Budig

Perils such as grizzly bears, snowstorms, vicious mosquitoes and freeze dried foods are commonly encountered by the Yellowstone back-country traveler. However, on the WMC canoe

YELLOWSTONE (CONT.)

trip on Aug. 28-30, we managed to avoid all the normal afflictions. Indeed, the greatest tribulation of the outing was the inadvertent discovery on Sunday morning that the "Blue Hawaiians" we drank the night before consisted primarily of 151 rum.

Participants included Michelle Perkins and her son Ronnie, Andy Childs, Chuck Reichmuth and myself. The journey began with a canoe trip across Lewis Lake, then up the Lewis River to Shoeshone Lake where we camped for the next two nights. On the second day we canoed to the geyser basin at the far end of Shoeshone Lake - a fascinating and impressive back-country thermal area. On the third day we canoed out.

We avoided the dangers of freeze-dried foods by packing in ample quantities of T-bone steaks and Welsh Rarebit. We also managed to produce a cake on the first evening to celebrate Michelle's birthday. With light produced by a propane-powered lantern, a reliable source could not report that we were roughing it.

The weather was also generally fair, allowing us to savor our gorgeous overlook of Shoeshone Lake. The weather took a turn on the third day however, and we faced dangerous waters on Lewis Lake. To remedy this, we tied the canoes together at the front and at the back, to make the boats perform like a single catamaran. Although this craft moved easily through the rough water, we collected a dangerous amount of water in the canoes. I was about to order out the women and children first (and of course to eventually go down with the ship) when the waters calmed.

The rest of the trip was uneventful and the outing ended much too soon--as do all late summer Yellowstone outings.

FERGUSON CANYON TRAIL CLEARING

by John Riley

The scheduled trail clearing in Ferguson Canyon attracted only a small turnout of volunteers, but the few who did report were enthusiastic and hard working. It was afternoon when the group arrived at the overlook above Big Cottonwood Canyon and the Holladay Gun Club. However, the trail was in good shape through the Canyon and up the switchbacks. After lunch, the thicket above the switchbacks was tackled and a path was cut about two-thirds of the way to the gully. Because it was getting late and people had to return, we did not hike to Storm Mountain.

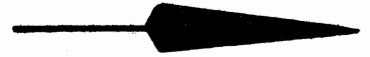
It will be necessary to schedule another session to finish clearing the trail, perhaps next spring.

The workers were: Paul Rubinfeld, Mike Kleihege, Jeff Taggart, Chuck Reichmuth, Sophia Simons and John Riley.

MY APOLOGIES

Due to the large number of articles submitted this month and the fact that one typist is on vacation, I, well-um, couldn't get them all done. I promise the rest will be in the next issue of The Rambler. Torrie Duncan

MEMBERSHIP APPLICATION



The Wasatch Mountain Club is an organization of individuals possessing an interest in outdoor recreation. It was informally established during the early 1900's and formally organized as a non-profit corporation in the State of Utah during 1920.

From its Constitution, in part, the purpose of the Wasatch Mountain Club shall be to promote the "physical and spiritual well being of its members and others by outdoor activities," to "collect and disseminate information regarding the Rocky Mountains in behalf of science, literature and art," to "explore and picture the scenic wonders of this and surrounding states," to foster awareness of the scenic beauties of the State of Utah, and to encourage preservation of our natural areas including their plant, animal, and bird life.

The Wasatch Mountain Club is a cooperative organization; its success and effectiveness depends entirely on the enthusiasm and dedication of its members. The Club is governed by a volunteer Governing Board of Directors and Trustees selected annually by ballot.

MEMBERSHIP IN THE WASATCH MOUNTAIN CLUB

Upon written or telephone request to the Membership Director prospective members will receive two consecutive issues of the Club's monthly publication The Rambler. Contained within the publication is a Schedule of Activities.

Membership Requirements: An individual must be eighteen years of age or older, and must have completed two Club activities and have paid dues and entrance fees. The activities may be service activities designated by the Directors. Prospective members are strongly encouraged to complete at least one service activity. Parties, socials, and meetings are not considered as qualifying activities.

Signatures of Activity Leaders are required on the application form. The signature of a Director may be substituted to verify one activity. Please bring this application form with you for the leader to sign when participating in a qualifying activity.

Lapsed members are not required to complete activities for reinstatement.

Membership does not qualify an individual to participate in all activities listed on the Schedule. Decisions about the fitness or ability of a person to participate in a specific activity are made by the Leader or Director.

NOTE:

Failure to fill in all applicable portions of this form may invalidate your Rambler subscription.

WASATCH MOUNTAIN CLUB
APPLICATION FOR MEMBERSHIP/REINSTATEMENT
and
RAMBLER SUBSCRIPTION QUALIFICATION FORM

NAME: _____ TELEPHONE: _____
(please print)
NAME OF SPOUSE (only if spouse also desires membership): _____
STREET ADDRESS: _____ Apt. No.: _____
CITY: _____ STATE: _____ ZIP: _____
(No Zip, no Rambler)
OCCUPATION (optional): _____

CHECK
ONE



I hereby apply for ☐ NEW MEMBERSHIP
☐ REINSTATEMENT in the Wasatch Mountain Club.

INSERT
YEAR



For the year _____ . Enclosed are my dues as follows:

If joining from January to August, inclusive:

- ☐ Single Membership: \$15.00, of which \$6.00 is for a subscription to the Rambler and \$5.00 is the entrance fee.
- ☐ Couple Membership: \$20.00, of which \$6.00 is for a subscription to the Rambler, \$5.00 is spouse dues (non-subscribing), and \$5.00 is the entrance fee.

CHECK
ONE



If joining from September to December, inclusive:

- ☐ Single Membership: \$10.00, of which \$3.00 is for a half-year subscription to the Rambler and \$5.00 is the entrance fee.
- ☐ Couple Membership: \$12.50, of which \$3.00 is for a half-year subscription to the Rambler, \$2.50 is Spouse dues (non-subscribing), and \$5.00 is the entrance fee.

Please send checks; cash is not accepted. Your cancelled check is your receipt.

CHECK
ONE



I ☐ DO
☐ DO NOT wish to receive the Rambler. Subscriptions are not deductible from the dues. I am 18 years of age or older.

The Wasatch Mountain Club Membership Year is March 1 to February 28. Those joining in January and February are granted a leeway to join for the next membership year beginning in March.

REINSTATEMENTS:

If dues have not been paid continuously, a \$5.00 reinstatement fee must be paid instead of the entrance fee. The dues listed above apply.

I am willing to serve the Wasatch Mountain Club in the following areas:

___ Conservation; ___ Writing/editing; ___ Photography; ___ Lodge work;
___ Organizing social activities; ___ Typing; ___ Producing the Rambler;
___ Trail clearing; ___ Other: _____

QUALIFYING ACTIVITIES:

1. _____ Date: _____ Leader: _____

2. _____ Date: _____ Leader: _____

I agree to abide by the Wasatch Mountain Club rules and regulations as specified in the Constitution and By-laws and as determined by the Board of Directors.

Applicant's Signature

Return completed form and dues check to:

WASATCH MOUNTAIN CLUB
3155 Highland Drive
Salt Lake City, Utah 84106

WASATCH MOUNTAIN CLUB Telephone: (801) 363-7150

LEAVE BLANK:

Check No.: _____ Date Received: _____ Amount Received: _____
(less entrance/reinstatement)

Board of Directors approval: _____

NEW AND REINSTATED MEMBERS

04-SEPTEMBER-81

Bateman, Wayne	613 - 3rd Avenue	SLC	UT	84103	531-7799
Brown, R. Leigh	970 - 1st Avenue, #4	SLC	UT	84103	355-7974
Byard, Laura	622 University Street	SLC	UT	84102	582-5315
Collins, Marti	1455 Bryan Avenue	SLC	UT	84105	467-7657
Cook, Kathy	9462 South 250 East	Sandy	UT	84070	534-8513
Flynn, Mike & Lee	2528 East 6600 South	SLC	UT	84121	942-2336
Gregg, Chuck	311 - 5th Avenue	SLC	UT	84103	364-6342
Hegewald, Uli	1215 East 300 South, #5	SLC	UT	84102	582-3502
Hudson, Ronald	1397 Blair Street, #1	SLC	UT	84115	484-6647
Imes, Sharon L.	2821 East 2100 South	SLC	UT	84109	485-0127
Kalm, Carol R.	3549 Crestwood Drive	SLC	UT	84109	272-0828
Kelley, Steve & Cathi	6A Officers Circle	Ft. Douglas	UT	84113	581-1598
Kjeldsberg, Carl & Gillean	2342 Lynwood Drive	SLC	UT	84109	467-7343
Kosmider, Sally	726 South 600 East, #B	SLC	UT	84102	364-1392
Marcus, Janice	2824 Ashland Way	SLC	UT	84109	278-8985
Marsh, Mona	6787 Winterdale Circle	SLC	UT	84121	942-6435
Martinez, Bernice P.	1175 Sunnyside Avenue	SLC	UT	84102	583-1271
Nuttall, JoAnn T.	7337 Winesap Circle	SLC	UT	84121	943-1042
Rampton, Martha	852 Colony North, #34	SLC	UT	84106	262-8295
Roach, Patrick M.	3595 Ceres Drive	SLC	UT	84117	272-5888
Stoney, Julia	498 Howard Drive	Sandy	UT	84070	571-1715
Taylor, Bruce	566 East 9940 South	Sandy	UT	84070	572-3239
White, M. Kay	1605 Moordale Lane	SLC	UT	84117	278-1088
Willett, Gerald	2084 N. Robins Drive	Layton	UT	84041	776-0880
Wilson, Robert & Jinny Lee	4285 Parkview Drive	SLC	UT	84117	277-7446

CORRECTIONS, ADDITIONS AND CHANGES TO MAY ADDRESS LIST

04-SEPTEMBER-81

Bamford, Robert W.	2315 - 26th Avenue E.	Seattle	WA	98112	
Barberio, Betty	2225 Etta Lane	Burleson	TX	76028	
Cordes, Anna	1211 Harrison Avenue	SLC	UT	84105	
Deck, Denis	2300 Earls Court Road	SLC	UT	84119	
Everson, Bob	1030 Ramona Avenue	SLC	UT	84105	487-0029
Hall, Gene R.	5248 Pinemont Dr. #C-230	Murray	UT	84017	
Henson, Ruth C.	2480 Emerson Avenue	SLC	UT	84108	583-9343
Holland, Ruth	898 E. Spring Creek Pkwy.	Elko	NV	89801	753-6757
Jewell, Paul W.	290 North 500 West, #305	Bountiful	UT	84010	
Kazmierczak, Bernie	506 Crest View Ave, #45B	Belmont	CA	94002	
Maddock, Jane H.	4667 Fortuna Way	SLC	UT	84117	277-9738
Morrison, Lynette	c/o Fulda Elem. School	AP0	NY	09146	825-7058
Nelson, Vickie	1336 Lusitana, Apt 15	Honolulu	HI	96813	
Ormsby, Michael	1211 Harrison Avenue	SLC	UT	84105	
Schork, Christoph	1519 South 1300 East	SLC	UT	84105	485-3466
Schweizer, Martin P.	300-St. Moritz Strasse	Summit Park	UT	84060	
Shepard, William R.	5635 Waterbury Way, C101	SLC	UT	84121	
Van Hook, John	Siena College	Londonville	NY	12211	



WASATCH MOUNTAIN CLUB
3155 HIGHLAND DRIVE
SALT LAKE CITY UTAH 84106

SECOND CLASS
POSTAGE PAID
AT SALT LAKE
CITY, UTAH.
(NO. 053410)