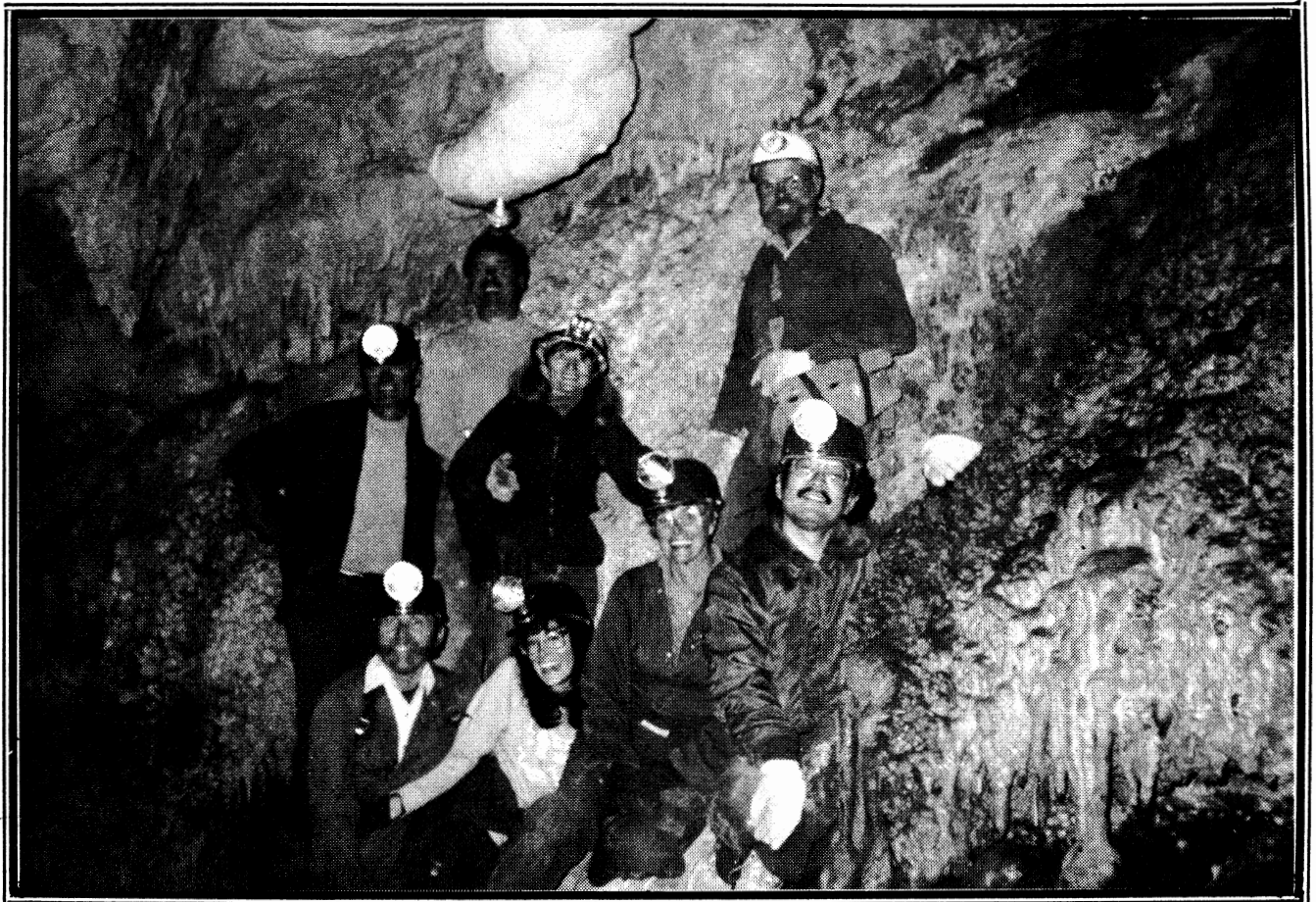


WASATCH MOUNTAIN CLUB

DECEMBER

The Rambler

VOL. 64 NO. 11 DECEMBER 1987



Cave Exploration in the Cherry Creek Range. Oct 24, 1987.
Front row: Hank Winawer, Karen Kester, Elissa Stevens,
Jason Kato. Back row: Monty Young, Vince Desimone,
Linda Wilcox, Dale Green. Photo courtesy of Hank Winawer.

HIGHLIGHTS

CAVE EXPLORATION TRIP
AVALANCHE CLASS OFFERED

MEMBERSHIP LIST ENCLOSED

WASATCH MOUNTAIN CLUB

David Vickery, Managing Editor

Production:
Pat Beard

Advertising:
Jeff Pace

Classified Ads:
Sue deVall

Staff Writers:
Carol Anderson
"Apterix"
Ben Everitt
Roseanne Woodward

Mailing:
Niel Hinckley
Elliot Mott

THE RAMBLER (USPS 053-410) is published monthly by the WASATCH MOUNTAIN CLUB, Inc., 168 West, 500 North, Salt Lake City, UT 84103. Telephone 363-7150. Subscription rates of \$12.00 per year are paid for by membership dues only. Second-class Postage Paid at Salt Lake City, UT.

POSTMASTER: Send address changes to THE RAMBLER Membership Director, 168 West, 500 North, Salt Lake City, UT 84103. CHANGE OF ADDRESS: This publication is not forwarded by the Post Office. Change of address should be submitted in writing to the Membership Director, 168 West, Fifth North, Salt Lake City, Utah, 84103. All correspondence regarding the mailing of THE RAMBLER should be directed to the Membership Director at that address. Allow 45 days for address changes.

Submissions to THE RAMBLER must be received by 6:00 pm on the 15th of the month preceding the publication. Mail or deliver to THE RAMBLER office or to the Editor. Include your name and phone number on all submissions.

The right is reserved to edit all contributions and advertisements and to reject those that may harm the sensibilities of WMC members or defame the WMC.

Copyright 1987, Wasatch Mountain Club

The Rambler

THE RAMBLER, the official publication of the Wasatch Mountain Club is published monthly by and for its members. Persons wishing to become members and receive THE RAMBLER for two months upon written request to the Membership Director, 168 West, Fifth North, Salt Lake City, Utah, 84103 and payment of \$3.00. Checks are to be made payable to the Wasatch Mountain Club. There is a \$10.00 charge for returned checks.

Membership applicants must participate in at least two Club outdoor or service activities, verified by the signatures of approval from the activity leaders. Yearly dues are \$25.00 single, \$35.00 couple. A \$5.00 initiation/reinstatement fee is charged.

1987-1988

GOVERNING BOARD

President	Hank Winawer	277-1997
Vice President	Carol Kalm	272-0828
Secretary	Don Ashton	278-6191
Treasurer	John Veranth	278-5826
Membership	Earl Cook	531-6339
Boating	Jeff Barrell	943-2836
Conservation	Mary Fleming	359-5645
	Chris Biltoft	359-5645
Entertainment	Cassie Badowsky	278-5153
	Elissa Stevens	272-7215
	Joan Stevens	467-9644
Hiking	Don Hamilton	225-6678
Lodge	Alexis Kelner	359-5387
	Carol Kalm	272-0828
Mountaineering	John Kennington	942-0693
Publications	David Vickery	583-7064
Ski Touring	Dan Grice	561-2458
Information	Chris Baierschmidt	486-2529

COORDINATORS

Bicycling		
Canoeing	Kathy Klein	466-8387
	Randy Klein	466-8387
Kayaking	Mike Dege	571-7684
Sailing	Vince Desimone	1-649-6805
Rafting	Carl Cook	485-4586
Volleyball	Jim Elder	943-3321

TRUSTEES

Karin Caldwell	942-6065
Marilyn Earle	649-1339
Dale Green	277-6417
Stewart Ogden	359-2221
O'Dell Peterson	Trustee Emeritus
Dale Green	Historian

The Rambler

DECEMBER

Board Report	3
From the President	3
Events at a Glance	6
Activities	7
Ski Touring Director	14
Membership List	15
Photo Contest Announcement	35
Directory of Avalanche Ed	36
Avalanche Class	37
Conservation Notes	38
A Letter of Thanks	39
Information Director	40
Trip Talk	41
Classified Ads	44
Grubby Gourmet	45
Sky Calendar	45
Answer to Nov Puzzle	45
Crossword Puzzle	46

EDITOR'S NOTE: This month I received many fine trip talks and photos. Unfortunately, because this issue contains the membership list, there was not enough space to print all of the trip talks and photos I received. Those that do not appear in this issue will appear next month. Thanks go to all who sent in material.



FROM THE

PRESIDENT

Hank Winawer's column appears as a trip talk this month. See it on page 42.

WASATCH MOUNTAIN CLUB BOARD REPORT

November 4.

Dick Cloward of the Utah Wildlife Leadership Federation made a presentation about the Federation. Chris Baierschmidt has described his presentation in her article "from the Information Director."

The revised by-laws will be presented to the board next month for a formal vote. Because the new by-laws will change the beginning of the term of office for board members to March 1, the board appointed Mike Budig (chairman), John Mason, and Carol Anderson to the Nominating Committee. The Nominating Committee will publish the list of candidates for all board positions in the January *Rambler*.

Chris Biltoft described possible club office space in the Executive Building, and Dale Green will investigate possible office space in the H&R Block Building as the search for new office space continues...

John Veranth has finished the manuscript of his new *Wasatch Hiking Guidebook* that the WMC will publish next spring. It is being reviewed by various club members and a copy editor. There will be a contest for photographs for the guidebook.

Alexis Kelner, Lodge Co-director, summarized the remarkable accomplishments at the lodge this summer under the headings of the four elements: Fire (the lodge fire escape is installed, and the front porch that will provide a snow free exit from the ground floor is completed), Earth (road access to the lodge may be resolved soon), Water (a spring has been found that could supply the lodge with water), and Ether (the new propane heater is installed and working).

We will try to get Bear West, the consultants working on the Canyon Master Plan to give a presentation & solicit opinions at the General Membership Meeting in February.

Next board meeting: December 2.

NOMINATIONS FOR WMC DIRECTORSHIPS ARE DUE DEC 14!

The nominating committee is now accepting nominations for all directorships. If you want to run for any of the directorships, or know of someone who would make a good director and might be interested in running, please contact the Nominating Committee:

Mike Budig (chairman)	328-4512
John Mason	581-1926
Carol Anderson	572-4352

LET YOUR NOMINATING COMMITTEE HEAR FROM YOU!

WILDERNESS POETRY COMPETITION

FIRST PRIZE: \$100
DEADLINE: FEBRUARY 1, 1988

All poets are invited to participate in an exciting competition sponsored by the Utah Wilderness Association. Send your unpublished poem, related to the theme of wilderness, its preservation, its life and values, or its spiritual nature, to POETRY/Utah Wilderness Association, 455 East 400 South, #306, Salt Lake City, Utah, 84111. A prize of \$100.00 will be awarded to the winning poet. The winning poem and the top five honorable mentions will be reprinted in a special centerfold of the spring 1988 Utah Wilderness Association *Review*.

CONTEST RULES

Poems must not exceed 40 lines, may be in any style and must be limited to the themes above. No more than three poems may be entered by any poet. Each poem must be accompanied by an entry fee of \$3.00. Send two copies of each poem: one must include your name, address and phone number in the upper right corner; the second must contain the poem only, to guarantee anonymity during judging. Poets retain all rights. For notification of winners, send SASE. No poems will be returned. ALL POEMS MUST BE POSTMARKED BY FEBRUARY 1, 1988.

YELLOWSTONE SKI ADVENTURE

January 22-26 are the dates of this year's Yellowstone ski outing. We will be staying at the Snowlodge at Old Faithful for 4 nights and 3 1/2 days of skiing the extensive groomed trails that wind through geyser basins, bison herds, and river valleys. The group will drive to West Yellowstone Thursday, January 21 before taking the snowcoach to Old Faithful on Friday. Cost for 4 nights accommodation and round trip snowcoach fare is \$108.00; food and carpool expense is extra. A restaurant in the Snowlodge serves a variety of breakfast and dinner items. To reserve your spot, a refundable trip deposit of \$30.00 should be submitted to Dan Grice, 1045 Watercress Lane #7j, Midvale, UT 84047. Checks should be made payable to the Wasatch Mountain Club and are refundable until January 10. The trip is limited to 14 participants. For more information, call Dan at 561-2458.

KIRKHAM'S.

Your Only Store When You're Heading For the Great Outdoors.



Here's a sampling of the winter items we have available for you:

X C SKIS

- Kastle
- Kazama
- Atomic
- Fischer
- Swallow
- Bonna
- Jarvinen

SUNGLASSES

- Style Eyes
- Ski Optics
- Vuarinet
- Jones

OUTDOOR CLOTHING

- North Face
- Moon Stone
- Northern Isles
- Boston Traders
- Alps
- Columbia
- Woolrich
- Patagonia
- Wickers
- Windy Pass
- Royal Robbins
- Marmot

ACCESSORIES

- Reflex
- Exel
- Swix
- Titab
- Chouinard
- S.M.C.
- Sherpa
- Rotterfeller
- Dana
- Voile
- Asolo
- Yakima

BOOTS

- Adidas
- Koflach
- Alpina
- Fabiano
- Asolo
- Merrell

Kirkham's Outdoor Products

Manufacturers of quality products for the winter outdoors.

• Daypacks • Fanny Packs • Tents • Gaitors • Luggage • Overmitts

All made right at our factory/store, so we're able to pass along factory direct pricing to you.



Kirkham's®
outdoor products



3125 South State • 486-4161 • Open Mon.-Thurs. 9:30-6 pm, Fri. to 9

EVENTS AT A GLANCE

(See the Chronological Listing for Details)

<u>Dec</u>		BIKING	<u>Jan</u>
6 Tooele	12	Heber Valley	
<u>Dec</u>		BOATING	<u>Jan</u>
9 Permit Party			
<u>Dec</u>		SKI TOURS	<u>Jan</u>
5 Leader's Choice	20	Scotts Pass	2 Willow Ridge
5 Desolation Lake	20	Powder Park	2 Pfeifferhorn
6 Catherines Pass	20	Murdock Peak	3 Telemark Instruction
6 Greens Basin	25	Follower's Choice	3 Demo ski day
6 Beginners Clinic	26	Lower Silver Fork	3 Catherine's Pass
12 Catherines Pass	26	Leader's Choice	3 Lake Mary
12 Silver Fork	26	Maybird	3 Pieps practice
12 Beartrap	27	Leader's Choice	9 Avalanche Clinic
12 Ogden Valley	27	Gobbler's Knob	9 Lower Days Fork
13 Lake Katherine	27	Scott Pass-Park City	9 Upper Greens Basin
13 Leader's Choice			10 Catherines Pass
13 Mt. Reynolds	<u>Jan</u>		10 Park City White Pine
19 Dog Lake	1 Hangover Tour		10 Butler Fork to Porter
19 Leader's Choice	1 Leader's Choice		10 Upper White Pine
19 Alta-Brighton	2 Moonlight Tour		10 Beginners Clinic
19 Alta-Cardiff	2 Desolation Lake		
<u>Dec</u>	SHOWSHOE TOURS	<u>Jan</u>	
5 Leader's Choice	20 Lower Silver Fork	3 Norway Flats	
12 Scotts Pass	26 Leader's Choice		
<u>Dec</u>	SOCIALS	<u>Jan</u>	
12 Open Lodge Weekend	26 Open Lodge Weekend	2 Open Lodge Weekend	
25 Christmas Dinner			

VOLLEYBALL

(Tuesday Evenings at South High Women's Gym, 7:00 pm, except 12/22 and 12/29)

A WORD ABOUT WMC SKI TOURS

NTD (Not too difficult): Terrain is mostly gentle. Participants should be able to do a kick turn, snowplow, and descend a slope by traversing. Usually no avalanche danger.

MOD (Moderately difficult): Proficiency climbing and descending intermediate slopes is required. Pieps and shovels may sometimes be suggested or required. If a Pieps is carried, this implies knowledge of how to search for a buried companion.

MSD (Most difficult): Strenuous. Usually involve long ascents, steep or narrow descents. Pieps and shovel always required.

ALL SKI AND SNOWSHOE TOURS START AT 9:00 A.M. AT THE GEOLOGY SIGN, LOCATED AT THE EAST END OF THE PARKING LOT AT THE MOUTH OF BIG COTTONWOOD CANYON UNLESS OTHERWISE NOTED.

CLUB ACTIVITIES

Only activities approved by the appropriate WMC Director can be listed in the Club Activities section of the *Rambler*. Send your proposed activity, for approval, to the hiking, rafting, skiing, etc. director for inclusion in their activity schedule. Those activities sent directly to the *Rambler*, without approval, will not be published.

- Tue. Dec 1 VOLLEYBALL. 7:00 pm at South High Women's Gym. (17th South and State) Cost \$1.00. Optional instruction in spiking at 6:50. Call Jim for information at 943-3321.
- Sat. Dec 5 LEADER'S CHOICE SKI TOUR (MOD). John Kortbawi wants to ski where the snow is best, so meet him at 9 a.m. at the geology sign or call him at (272-8136) to get his ideas. Pieps and shovel suggested.
- DESOLATION LAKE SKI TOUR (NTD+). The trail to Desolation Lake is not steep, but sometimes it is challenging. Gary Lindstrom will lead you to the Lake when you meet him at 9 a.m. at the geology sign. His phone number is (532-1259).
- EASY TO MODERATE SNOWSHOE TOUR. Call Joy Ray (272-6116) for more information.
- Sun. Dec 6 CATHERINE'S PASS FROM BRIGHTON SKI TOUR (MOD). Jim Elder (943-3321) is the leader of this tour that is the favorite of many skiers. Meet him at 9 a.m. at the geology sign (where else?).
- GREENS BASIN SKI TOUR (NTD+). Chris Biltoft (359-5645) is the leader, 9 a.m. is the time, the geology sign is the place.
- TOOELE BIKE RIDE. This is a 70 mile ride over mostly flat terrain. Lunch at a restaurant. Meet Elliott (969-3976 after 6:00 pm) in the Salt Lake Community College parking lot at 4545 South Redwood Road (1700 West) at 10:00 am. This ride will automatically be canceled if roads are snow packed, or if a storm is imminent the day of the ride.
- BEGINNING SKI CLINIC. Do you want to learn how to ski but don't where to get started? This clinic is the answer. Learn how to get those slippery boards to climb, and how to get down from where you climbed up. Ellie Ienatsch (272-2426) will also show participants the rudiments of the telemark turn. Meet at the geology sign at the East end of the parking lot at the mouth of Big Cottonwood Canyon at 11:00.
- Tue. Dec 8 VOLLEYBALL. 7:00 pm at South High Women's Gym. (17th South and State) Cost \$1.00. Optional instruction in spiking at 6:50. Call Jim for information at 943-3321.
- Wed. Dec 9 BOATERS CHRISTMAS AND PERMIT PARTY. This is an important event for all WMC Boaters or prospective boaters. This is the time when we prepare to apply for next years permits. In addition, we might as well make a party out of it. Starting at 6:30 pm, we will have a pot luck, BYOB, and HBO

Bio (where we sit around the TV and watch movies of rivers just done). The permit party will be at the home of Carl Cook and Karen Brandon at 2189 Atkin (2830 South, 2189 East). Hope to see you there.

Sat. Dec 12

CATHERINE'S PASS AGAIN SKI TOUR (MOD). Join Rodger Foltz (487-0945) for a delightful ski tour to the pass.

SILVER FORK FROM TWIN LAKES PASS SKI TOUR (MOD+). A favorite ski tour for many, including George Swanson (466-3003) who will lead the group to the upper bowl of Silver Fork. 9 a.m., geology sign. Pieps and shovel suggested.

BEARTRAP SKI TOUR (MOD). Larry Stewart (485-7818) Plans to ascend via Willow and ski the upper slopes of Beartrap before returning through Willow gulch again to avoid the brush in lower Beartrap. Pieps and shovel suggested.

SCOTTS PASS SNOWSHOE TOUR (NTD). Monty Young (255-8392) will lead snowshoers through the woods to Scotts Pass. Meet Monty at 9:00 at the geology sign.

HEBER VALLEY BIKE RIDE. Above the inversion, this easy 30 mile ride is a casually paced winter tour of beautiful Heber Valley. The course is over mostly rural back roads, and we'll stop at a delicatessen for lunch. Afterwards, if there's interest, we'll adjourn to the steaming mineral pools of Midway to warm up. Meet Elliot (969-3976 after 6:00 pm) in the K-Mart/Regency parking lot at Parley's Way & Foothill at 9:30 am. This ride will automatically be canceled if roads are snow packed, or if a storm is imminent the day of the ride.

OGDEN VALLEY OVERNIGHT SKI TOUR. Cindy Cromer (355-4115) has a time-share condominium in Ogden Valley and has offered it as a location for this ski adventure. Ski tours of all levels of difficulty can be found there, Cindy says. Join Cindy for a Potluck dinner Saturday evening, stay overnight, and ski on Sunday. Call her for more information.

OPEN LODGE WEEKEND. J. Dewell will host. Bring slides & food. The following food - dall baht - will be available at cost. For details call J. Dewell at 295-2754.

Sun. Dec 13

LAKE KATHERINE SKI TOUR (NTD). Kenny Strong (546-1344). Catherine? Kathrine? Whatever, Ken will lead you there. Meet him at 9 a.m. at the geology sign.

LEADER'S CHOICE SKI TOUR (MOD). Ken Kelley (942-7730). Where are you skiing, Ken? Some secret spot, no doubt. Meet Ken at 9 a.m. at the geology sign to discover his secret. Pieps and shovel suggested.

MT. REYNOLDS SKI TOUR (MOD). This is the mountain above Dog Lake. Larry Larkin (521-0416) will search for the best snow and ski with the best turns. Pieps and shovel suggested.

Tue. Dec 15

VOLLEYBALL. 7:00 pm at South High Women's Gym. (17th South and State) Cost \$1.00. Optional instruction in spiking at 6:50. Call Jim for information at 943-3321.

Sat. Dec 19

DOG LAKE SKI TOUR (NTD). Tom Silberstorf will meet you at the geology Sign at 9:00 for this pleasant tour up Mill D North across from Spruces Campground in Big Cottonwood Canyon. If this is your first Wasatch Mountain Club tour, Tom would like you to call him at 467-5734.

LEADER'S CHOICE SKI TOUR (MOD+). Milt Hollander may select somewhere in the Uintas or in the Park City area for this tour. Needless to say, Milt will find the best snow available. Call him during the week to register. 277-1416.

ALTA TO BRIGHTON SKI TOUR (MOD). Mike Budig at 328-4512 asks that you call him to register for this favorite easy-on-the-driver tour. The group will bus up to Alta and bus down from Brighton. Pieps and shovel will be required if conditions warrant them.

Sun. Dec 20

ALTA TO CARDIFF SKI TOUR (MSD). Dan Grice will meet participants at 8:30 at the geology sign. The group will take the bus to Alta and climb to Pole Line Pass at the top of Cardiff Fork. The long invigorating ski down to Big Cottonwood road via Montreal Hill is well worth the climb. Pieps and shovel required. Several cars need to be spotted in Big Cottonwood, so please call Dan at 561-2458 if you would like to volunteer with this.

SCOTTS PASS SKI TOUR (NTD). Rick Johnson and Penny Spencer at 467-6441 will lead this tour. They know lots of good slopes in Mill F so be prepared for some interesting deviations from the beaten path. Call if you have questions.

POWDER PARK I, II, OR III SKI TOUR (MOD). Anna Cordes (467-9430) will choose which of these enchanting snow slopes up Mill D North in Big Cottonwood to visit. Meet her at 9:00 at the geology sign. Pieps and shovel are required. Call Anna if you have questions.

MURDOCK PEAK SKI TOUR (MSD). George Westbrook says there is usually a fair amount of snow on Murdock at this time of year. George will lead the tour up Toll Canyon above Timberline. Participants should meet at the Regency Theater at 8:00. Pieps and shovel are required. George's number, if you have questions, is 942-6071.

LOWER SILVER FORK SNOWSHOE TOUR (NTD). Meet Dave Daurelle (562-5897) at 9:00 near the geology sign for an easy paced trip to the mine.

Tue. Dec 22

NO VOLLEYBALL. South High is closed.

Fri. Dec 25

YOUR CHOICE CHRISTMAS DAY SKI TOUR. Celebrate the day in the mountains on skis before joining the group at the lodge for tree trimming and dinner. Call Ellie Ienatsch at 272-2426 with your ideas and suggestions. Depending on interests and abilities, the tour can be any level of difficulty. It could be an NTD trip to Brighton's Dog Lake or Lake Mary just to ski slopes or sit in the sun, an MOD tour to Catherine's Pass or Hidden Valley, or

something more challenging such as Tuscarora/Wolverine or Twin Lakes Pass to Silver Fork. If there is a lot of interest and a wide range of abilities, several tours will be scheduled.

Fri. Dec 25

CHRISTMAS DAY DINNER and tree decoration at the Lodge. Join us for a traditional Christmas celebration at the Lodge. You may want to start the day with cross country skiing and then wind up at the lodge for hot drinks and tree decorating. Then we'll have a traditional sit-down Christmas dinner with all the trimmings. The dinner will be a coordinated potluck, so please call Cassie Badowsky at 278-5153 to RSVP, and to discuss what dish & decorations you will bring. Lodge open at 2:00 pm. Dinner at 4:00 pm. WE NEED A HOST FOR THIS EVENT. PLEASE CALL CASSIE AT 278-5153 IF YOU ARE ABLE TO HOST & COORDINATE THIS DINNER.

Sat. Dec 26

LOWER SILVER FORK SKI TOUR (NTD). Trudy Healy at 943-2290 invites those who appreciate a leisurely pace to join her on a tour to the Alta Mine. She will meet you at 9:30 at the geology sign at the mouth of Big Cottonwood. Trudy encourages all who have pieps and shovels to bring them as there is always some danger of avalanches. (See January 9 entry on the avalanche clinic).

LEADER'S CHOICE SKI TOUR (MOD). Now that you have your brand new gear and are ready for more challenge, come on a tour with Al Gavere. He'll go (usually straight up) in search of the best powder in the Wasatch. Destination unknown. The meeting time will be 9:00 at the geology sign, but call Al at 486-1476 to register. Pieps and shovel required. Skins recommended. Al invites you to his hot tub after the tour. Spirits & snacks to share will be welcomed.

MAYBIRD SKI TOUR (MSD). Kipp Greene will lead this tour in Little Cottonwood Canyon. If snow conditions require it, he will change the destination. Pieps and shovel required. Call Kipp at 583-0167 to register.

LEADER'S CHOICE SNOWSHOE TOUR (NTD). Leah Mancini (487-3561) will snowshoe somewhere with someone when you meet her near the defunct Bagel Nosh in the Olympus Hills parking lot. Start at 9:00 to work off some of the calories consumed during the holiday season.

Sat. Dec 26-27

OPEN LODGE WEEKEND. Marian Nelson (486-9775) is lodge host for this weekend. Use the lodge as a base for skiing or just stay overnight and have Sunday breakfast at the Brighton General Store.

Sun. Dec 27

NTD SKI TOUR. Monty Young is taking a realistic look at this year's snow projections. He will meet you at 9:00 at the mouth of Big Cottonwood, but he asks you to call him first (255-8392) to see whether this will be a ski tour, a snowshoe tour, or a hike.

GOBBLER'S KNOB FROM MILLCREEK SKI TOUR (MOD+). Pieps and shovel required. Rolf Doebling, the leader, asks that you call him to register. Rolf's Ogden number is 782-3194. He kindly suggested that you call his daughter at 467-6636 in Salt Lake and leave your number. Then he will call you back.

Sun. Dec 27

SCOTTS PASS TO PARK CITY TO SCOTTS PASS SKI TOUR (MSD). This tour will be especially appealing if the day holds significant avalanche danger. Richard Conn (363-6035) will meet you at 8:00 at the geology sign for a long, but relatively safe, day. You will ski down from Scotts Pass on the Park City runs and have a lunch break at the bottom. Then the group will climb back up to the pass to return to their cars on the Big Cottonwood side.

Tue. Dec 29

NO VOLLEYBALL. South High is closed.

Fri. Jan 1

HANGOVER SKI TOUR (NTD). Wick Miller (1-649-1790 or 583-5160) has once again consented to lead this tour. It leaves at the crack of noon from the geology sign at the mouth of Big Cottonwood Canyon. The tour will go to the Lake Mary Overlook, and possibly beyond if there is popular demand. Wick stresses that, although this tour has a relaxed atmosphere, it is not for rank beginners.

LEADER'S CHOICE SKI TOUR (MSD). George Westbrook is making the choice. The only thing he can guarantee at this writing is that the day will be long. Start the New Year right! Call George at 942-6071 to register.

Sat. Jan 2

MOONLIGHT SKI TOUR (NTD). Lake Mary. Bill Rosqvist has offered to lead this tour which is one of his favorites. He will meet you at 8:00 p.m. at the geology sign. Bring snacks, a flashlight, and warm clothes as the temperature will probably drop below zero. Call Bill with your questions at 295-0458.

DESOLATION LAKE SKI TOUR (easy MOD). Meet Jinny and Bob Wilson (277-7446) at 9:00 at the geology sign. This tour up Mill D in Big Cottonwood is long, but the terrain is fairly gentle. The group may picnic by the lake or elect to go on to the ridge above in search of powder. Pieps and shovel required.

WILLOW RIDGE SKI TOUR (MOD). The ridge above Willow Lake has been known to drive skiers stark raving mad. They reach that state trying to get it all. There are open slopes and wooded slopes. There is gentle terrain and steep. Choose your own poison. Meet Ellie Ienatsch at 9:00 at the geology sign for a crazy great day. Pieps and shovel suggested. Ellie's number is 272-2426.

PFEIFFERHORN SKI TOUR (MSD). Steve Swanson will start at 8:00 from the geology sign. Pieps and shovel required. It is not necessary to call to register, but if you have questions, Steve's number is 484-5808. Steve will change the destination if conditions require it.

Sat. Jan 2-3

LODGE OPEN WEEKEND WITH POTLUCK. Dan Grice (561-2458) is the host, and will have the lodge open from about 4:00 Saturday afternoon through Sunday evening. Call Dan before Saturday to register for the potluck on Saturday evening.

Sun. Jan 3

WASATCH MOUNTAIN CLUB SKI DAYS AT THE LODGE. Dan Grice will be lodge host Saturday afternoon through Sunday. He invites WMC skiers to join him for a variety of activities centered around the club's lodge. The following is a list of Sunday's scheduled activities:

>> TRY A PAIR OF NEW SKIS! 9:00-4:00. Wasatch Touring and Kirkhams will provide the newest skis on the market for club members to sample. Demos skis can be checked out for an hour at a time from the lodge.

>> INSTRUCTION ON PISTE 8:30. John Kortbawi will key a morning of instruction on the Brighton Ski Area slopes. John will find instructors to teach telemark skiing on the hardpack at all levels. He and the other instructors will meet you at 8:30 at the lodge. You might consider buying on all-day pass so you can practice in the afternoon what you learned in the morning.

>> CATHERINES PASS SKI TOUR (MOD) 9:00. Len Haas will meet you at the lodge for this popular tour. He suggests you carry pieps and shovel. Len's number is 583-5200. Meet other participants at the geology sign at 8:30 if you need to car pool from the valley.

>> LAKE MARY SKI TOUR (NTD) 10:00. Come to the lodge for this relaxed tour to the lake with Margo and Art Griffin. The Griffins can be reached at 363-1996 if you have questions. Meet other participants at the geology sign at 9:30 if you need to car pool from the valley.

>> PIEPS PRACTICE CLINIC FOR INSTRUCTORS 3:00 TO 4:00. All moderate and advanced skiers who have had some experience with pieps usage and who can assist Walter Haas with the afternoon avalanche clinic on Saturday, January 9, and encouraged to attend this practice session. The avalanche clinic was understaffed last year and could not offer adequate instruction to the more than 100 participants. Meet Walter at the lodge at 3:00. PLEASE CONSIDER THIS SERIOUSLY. YOU MAY HELP TO SAVE A LIFE.

>> HAPPY HOUR AFTER SKIING 4:00 TO ?. Bring your bottles, baskets, bags and bites of this and that with you to the lodge in the morning. You can leave instructions with Assistant Lodge Host Bill Ienatsch or you can lay out your food-to-share yourself when you return.

>> A hot fire and hot drinks will be available at the lodge throughout the day for skiers coming and going. Happy Skiing! For more information, call Dan at 561-2458.

Sun. Jan 3 EASY SNOWSHOE TOUR, NORWAY FLATS. Enjoy the beauty, peace, and solitude of the Uintas with Gayle Stockslager (582-1429). Meet at 9:00 at the Regency Theater parking lot on Parley's Way.

Tue. Jan 5 VOLLEYBALL. 7:00 pm at South High Women's Gym. (17th South and State) Cost \$1.00. Optional instruction in spiking at 6:50. Call Jim for information at 943-3321.

Sat. Jan 9 AVALANCHE CLINIC. 8:00 am at Zion Lutheran Church. See notice elsewhere in this Rambler.

LOWER DAYS FORK SKI TOUR (NTD). Bill Rosqvist will lead this tour up Days Fork to the meadow. Meet Bill at 8:30 at the geology sign. The tour will end at the Spruces Campground at 1:30 so participants can take part in

the avalanche clinic that afternoon. Bring your pieps and shovel for this session if you have them. Bill's number is 295-0458.

Sat. Jan 9

UPPER GREENS SKI TOUR (MOD). Meet the leader, Ross McIntyre (466-7749) at the geology sign at 8:00. Ross and company will spend a morning skiing the slopes and trees above Green's Basin. The tour will end at Spruces Campground at 1:30 so participants can take part in the avalanche clinic at the Spruces. Bring your pieps and shovel for this session if you have them.

Sun. Jan 10

CATHERINES PASS FROM ALTA SKI TOUR (NTD). Ski up beautiful Albion Basin to feed the chickadees at the pass with club President Hank Winawer. Hank will be at the mouth of Big Cottonwood at 9:00. Pieps and shovel are suggested. If you have questions, call Hank at 277-1997.

PARK CITY WHITE PINE SKI TOUR (MOD). Denna and Bob Wright will meet the tour members at the 7-11 in Park West at 9:15, so car pool from the Regency Theater, Parley's Way, at 8:30. The Wrights have extended an invitation to participants to enjoy their hot tub after the tour.

BUTLER FORK TO PORTER FORK SKI TOUR (MOD+). Dave Smith will meet you at 8:00 at the Northwest corner of Olympus Shopping Mall, but he would like you to call him at 278-6515 to register. Pieps, shovel, and skins are required.

UPPER WHITE PINE SKI TOUR (MSD). John Mason sets a fast pace to get to the endless slopes of powder this area offers. Pieps and shovel are required. Call John at 581-1926 to register.

SECOND ANNUAL BEGINNER'S SKI CLINIC. If you want to learn to cross-country ski, but don't know how to get started, this is for you. Audrey Stevens-Kelley of Timberline (near Park City) is not only a wonderful instructor but a generous hostess. The day will start at her hearth with warm drinks and encouraging words. Audrey says, "All you need to know is how to put on and take off your skis. Just go & rent any old pair of cross-country skis, poles, and boots." Meet at the Regency Theater on Parley's Way at 9:00. Someone will be there to direct you to Audrey's beautiful home. Audrey is preparing lunch, so you will not need to bring one. If you would like to call Audrey, feel free to do so at 1-649-9884. Last year this write-up contained this sentence: "Fond memories of a magic day are a certainty." Those who participated have said that that is not saying half enough.

Tue. Jan 12

VOLLEYBALL. 7:00 pm at South High Women's Gym. (17th South and State) Cost \$1.00. Optional instruction in spiking at 6:50. Call Jim for information at 943-3321.

SEASON OUT-OF-TOWN ACTIVITIES

Jan 22-26

Yellowstone Ski Tour.



FROM THE

SKI TOURING DIRECTOR

by Dan Grice

Highlights of the ski season in December and January include:

BEGINNER SKI CLINICS

Two clinics are scheduled, December 6th and January 10th. The clinics are a great introduction to skiing because the instructors, Ellie Ienatsch and Audrey Stevens-Kelley, have a natural talent for teaching the basics of skiing effectively. If you would like to ski with the club but feel incompetent, then these clinics are for you.

OGDEN VALLEY SKIING

Cindy Cromer has offered her time-share condominium to WMC skiers December 12-13. A potluck dinner December 12 and all levels of skiing on the 13th are planned. Call Cindy at 355-4115 to register or for more information.

LODGE OPEN WEEKENDS

We do not use the lodge as often as we should during the winter. It is a great resource because it sits in the middle of the Brighton area, next to some great skiing. Spending the night at the lodge is perfect because instead of waking up to inversions and dirty snow, you can wake up in a "clean" environment, ready to get first tracks. Lodge open weekends have been scheduled this winter so club members can take advantage of this resource. Refer to the schedule of events form more information.

SKI DEMO DAY AND ON PISTE INSTRUCTION JANUARY 3

Have you ever wanted to try several pairs of skis during a day of skiing to compare their performance? Kirkhams and Wasatch Touring will have free demo skis at the lodge for club members to ski test. The latest models in several sizes will be available, and can be checked out for an hour per pair. Although

there is no fee, a VISA or Mastercard number is required.

John Kortbawi, with helpers, will lead a morning of telemark instruction on the slopes of Brighton. Using a ski area as an instructional setting is great because that is the only way to pack a lot of downhill miles into a single day.

These activities are scheduled to coincide with the lodge open weekend of January 2-3 so club members can have a potluck dinner Saturday evening, stay overnight at the lodge, and attend the instruction at Brighton or ski for the day from the lodge. No matter what you do January 3rd, all skiers are invited to return to the lodge after skiing for an extended happy hour starting at 4 pm. Bring your favorite snacks. Refer to the schedule of events for more information.

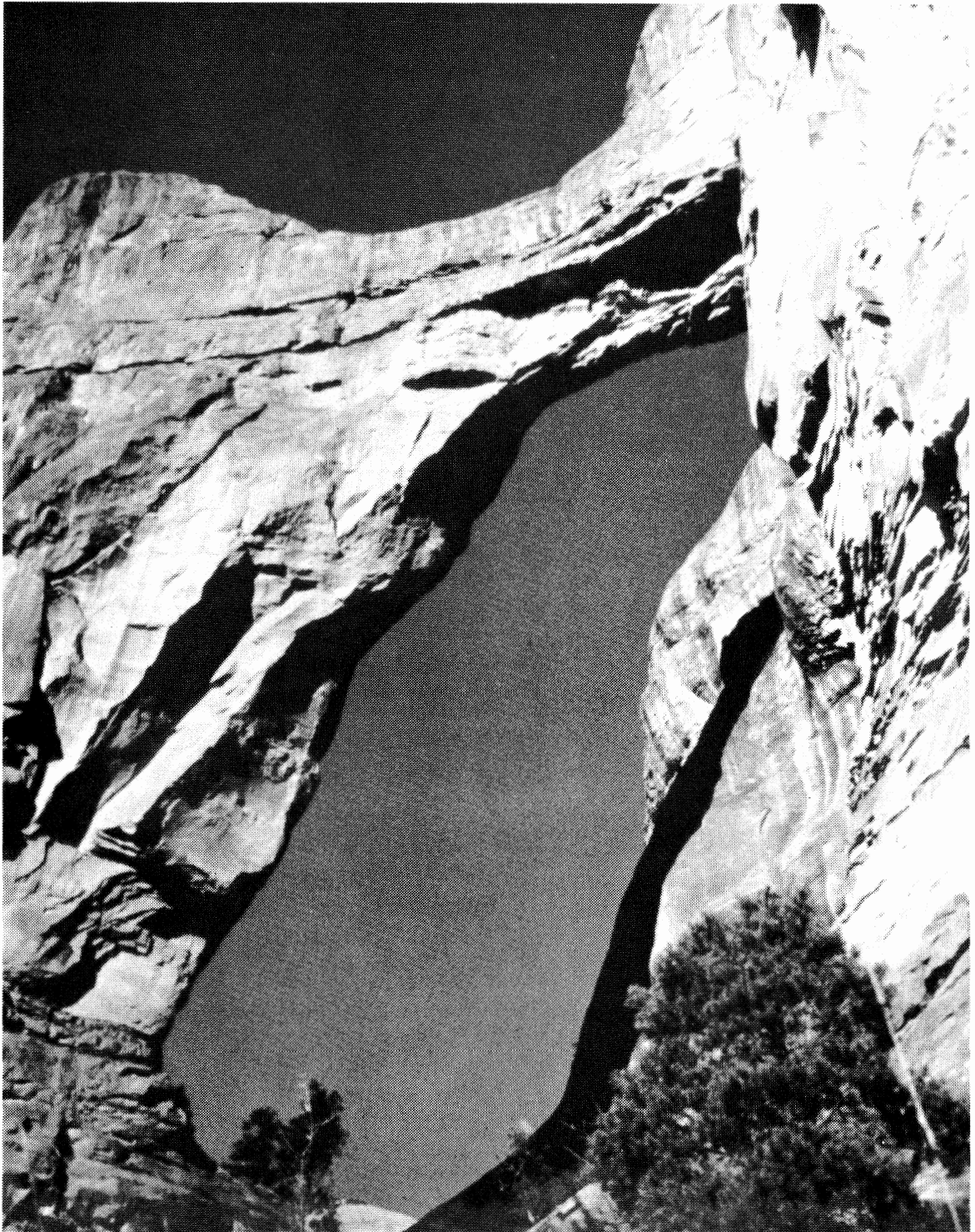
AVALANCHE COURSE JANUARY 9

Walt Haas will again head the avalanche course. If you have no idea how to search for a buried skier with a pieps, then you need to attend this course. Refer to the notice elsewhere in this Rambler for more information.

YELLOWSTONE SKI ADVENTURE JANUARY 22-26

The club will again sponsor an outing to the Old Faithful area of Yellowstone for 3 1/2 days of skiing past geysers and wintering herds of Elk and Bison. Cost is \$108.00 per person plus food and car pool expenses from Salt Lake City. Refer to the notice elsewhere in this Rambler for more information.

WASATCH MOUNTAIN CLUB MEMBERSHIP LIST
DECEMBER, 1987



Arch Canyon, spring 1987. Photo by Chuck Ranney.

NOTICE!

This list was compiled from the Membership Renewal Forms and Membership Application Forms. Please review your data and if there are discrepancies, notify the Membership Director. This data is also used for *Rambler* mailing. If you do not receive the *Rambler*, we may not have your correct address or zip code. If you change your address or telephone number, let the Membership Director know as soon as possible so you don't miss an issue of the *Rambler*. The Post Office will not forward the *Rambler*, but returns it to us with a charge to the WMC.

The *Rambler* mailing labels are processed on the 25th of the month, address changes received after that date will not be incorporated into the list until the next month.

An updated Membership List is expected to be published in the June, 1988 issue of the *Rambler*.

1987-1988

GOVERNING BOARD

President	Hank Winawer	277-1997
Vice President	Carol Kalm	272-0828
Secretary	Don Ashton	278-6191
Treasurer	John Veranth	278-5826
Membership	Earl Cook	531-6339
Boating	Jeff Barrell	943-2836
Conservation	Mary Fleming	359-5645
	Chris Biltoft	359-5645
Entertainment	Cassie Badowsky	278-5153
	Elissa Stevens	272-7215
	Joan Stevens	467-9644
Hiking	Don Hamilton	225-6678
Lodge	Alexis Kelner	359-5387
	Carol Kalm	272-0828
Mountaineering	John Kennington	942-0693
Publications	David Vickery	583-7064
Ski Touring	Dan Grice	561-2458
Information	Chris Baierschmidt	486-2529

COORDINATORS

Bicycling		
Canoeing	Kathy Klein	466-8387
	Randy Klein	466-8387
Kayaking	Mike Dege	571-7684
Sailing	Vince Desimone	1-649-6805
Rafting	Carl Cook	485-4586
Volleyball	Jim Elder	943-3321

TRUSTEES

Karin Caldwell	942-6065
Marilyn Earle	649-1339
Dale Green	277-6417
Stewart Ogden	359-2221
O'Dell Peterson	Trustee Emeritus
Dale Green	Historian

WMC Membership List (pages 17-24)
Not printed

KIRKHAM'S.

Your Only Store When You're Heading For the Great Outdoors.



Here's a sampling of the winter items we have available for you:

X C SKIS

- Kastle
- Kazama
- Atomic
- Fischer
- Swallow
- Bonna
- Jarvinen

SUNGLASSES

- Style Eyes
- Ski Optics
- Vuarnet
- Jones

OUTDOOR CLOTHING

- North Face
- Moon Stone
- Northern Isles
- Boston Traders
- Alps
- Columbia
- Woolrich
- Patagonia
- Wickers
- Windy Pass
- Royal Robbins
- Marmot

ACCESSORIES

- Reflex
- Exel
- Swix
- Titab
- Chouinard
- S.M.C.
- Sherpa
- Rotterfeller
- Dana
- Voile
- Asolo
- Yakima

BOOTS

- Adidas
- Koflach
- Alpina
- Fabiano
- Asolo
- Merrell

Kirkham's Outdoor Products

Manufacturers of quality products for the winter outdoors.

• Daypacks • Fanny Packs • Tents • Gaitors • Luggage • Overmitts

All made right at our factory/store, so we're able to pass along factory direct pricing to you.



Kirkham's®
outdoor products



3125 South State • 486-4161 • Open Mon.-Thurs. 9:30-6 pm, Fri. to 9

Wasatch Mountain Club
Membership List December 1987

NAME	ADDRESS	CITY	ST	ZIP	PHONE
Maier, Martin	182 "G" St.	SLC	UT	84103	
Mallon, Jim	597 Caldwell Dr	Tooele	UT	84074	882-5586
Malm, Margaret	PO BOX 123	Springdale	UT	84767	450-8103
Mancini, Leah	2942 S. 2000 E. #A	SLC	UT	84109	487-3561
Mann, Howard	4075 E. Powers Cir	SLC	UT	84124	277-8621
Marks, John D.	5077 Moor Dale Cir	SLC	UT	84117	278-1092
Marotz, Toni	935 E. 600 S. #12	SLC	UT	84102	364-2256
Marshall, Karen	3065 S. 2855 W.	WVC	UT	84119	973-0309
Mason, James & Marty	634 S.1200 E.	SLC	UT	84102	582-7619
Mason, John	1420 S.1400 E.	SLC	UT	84105	581-1926
Mason, Geoffrey	315 -1st Ave. #1	SLC	UT	84103	531-1138
Mathis, Pam E.	140 W. 400 N.	SLC	UT	84103	531-9319
Matthes, David C.	479 E. Northmont	SLC	UT	84103	359-4595
Maughn, Joyce	455 S. 300 E. #355	SLC	UT	84111	359-5900
May, Jesse A. Jr.	4108 Longmeadow Wy	Fort Worth	TX	76133	294-8818
Mayer, Donald J.	1619 Roosevelt #C	SLC	UT	84105	582-8072
Mayhew, Helene	1351 S. 600 E.	SLC	UT	84105	485-1839
Mays, Carroll & Linda	2648 W. 7460 S.	West Jordan	UT	84084	562-0739
McCaig, Bob	2911 Oakview Cir	SLC	UT	84121	942-2960
McCauley, Barbara	1418 S. 1100 E. #2	SLC	UT	84105	466-1117
McCullough, Karen & Tom	3735 S. Kimbary Way	SLC	UT	84109	278-6281
McDonald, Ann C.	C.V.S.R., Box 2702	Moab	UT	84532	259-8846
McDonald, Marilyn P.	10083 Mtn View Dr	Sandy	UT	84070	572-2956
McDonald, Alex	255 Guilford	BloomfldHls	MI	48013	000-0000
McDowell, E. York	4582 Arcata Rd	SLC	UT	84124	272-3644
McEwan, Margaret	5320 S. 570 E. #L	Murray	UT	84107	295-9037
McGhan, Wenonah *	655 Downingtown Ave	SLC	UT	84105	484-1916
McGillis, Gail	3847 S. 2215 E.	SLC	UT	84109	278-5403
McGregor, Martin	6261 Ben Air Dr	W. Jordan	UT	84084	967-9860
McGurk, Patricia	1002 Olynpus Pk Dr#D207	SLC	UT	84117	262-0705
McIntyre, A. Ross	1717 E. 2100 S. #6	SLC	UT	84106	328-1247
McKenzie, Mark	94 Thistledown Dr	Irondequoit	NY	14617	
McLellan, Jack & Eva	3457 S. 100 E.	Bountiful	UT	84010	295-9741
McMahan, Loyd D.	194 E. 2500 S.	Bountiful	UT	84010	295-9671
McMichael, Marion A.	3670 S. 2700 E.	SLC	UT	84109	277-0196
McQueen, Caroline	931 Can Rdg Wy. #11	Midvale	UT	84047	561-1520
Meade, Celia	519 E. 9800 S.	Sandy	UT	84070	572-2035
Meads, Floyd E.	807 W. 1700 S.	Woods Cross	UT	84087	
Melini, Louis	925 E. 1700 S.	SLC	UT	84105	487-6318
Merchant, Susan	1731 Shaleh Mdws #10F	SLC	UT	84117	272-7236
Merrill, Doug	3146 Nordic Dr	Sandy	UT	84092	943-4467
Metked, Linda	2257 E. 9840 S.	Sandy	UT	84092	942-4659
Meyer, Robert & Suzan	3190 Holiday Dr	Ogden	UT	84404	782-5708
Mickelsen, Susan	3545 Apollo Dr.	SLC	UT	84124	272-4154
Middleton, R. Summer	863 Yale Ave	SLC	UT	84105	328-1757
Midgly, Keith	843 E. 300 S.	Bountiful	UT	84010	292-1186
Millar, Kay	1151 Jaren Cir	SLC	UT	84108	583-1381
Miller, March T.	875 Padley St	SLC	UT	84108	582-6051
Miller, Wick & Joanne	1404 S. 1500 E.	SLC	UT	84105	583-5160
Miller, Karen K.	409 University St.	SLC	UT	84102	583-1205
Miller, Tom	P.O. Box 2008	Park City	UT	84060	649-8637
Mills, Debby	1204 Crandall	SLC	UT	84106	485-6323
Milosky, Linda	980 Blaine Av	SLC	UT	84105	484-8901
Minix, David	3299 Meadowbrook Dr.	WVC	UT	84119	967-3864
Mirabelli, Donna	9417 Gr. Hills Tr #1035	Austin	TX	78759	
Mitchell, Kathy	943 McClelland St.	SLC	UT	84105	533-9090
Mitchell, Mary S.	3548 Country Manor Rd	SLC	UT	84121	942-6645
Mitchell, Robert & Marcia	5772 Holladay Bl	SLC	UT	84121	278-7160
Moeller, Susan B.	1253 Lorraine Dr	SLC	UT	84106	467-3217
Moench, Janet	P. O. Box 2717	Page	AZ	86040	645-5169
Molberg, Holly	2940 Morningside Dr	SLC	UT	84124	277-8365
Molyneux, David	5144 Huntington Rd.	Taylorsvill	UT	84118	
Monroe, W. K.	Star Route	Brighton	UT	84121	649-1372
Monteith, Mike	P.O. Box 1127	Sandy	UT	84091	943-3827
Mooers, Bruce & Shireen	1857 E. 900 S.	SLC	UT	84108	582-9335
Mooers, Molly	2438 Elizabeth St #6	SLC	UT	84106	363-6470
Mooney, George	3414 Brockbank Sr	SLC	UT	84124	278-7031
Morris, Chet	943 McClelland St.	SLC	UT	84105	533-9090

Wasatch Mountain Club
Membership List December 1987

NAME	ADDRESS	CITY	ST	ZIP	PHONE
Morris, David B.	172 Braewick Rd	SLC	UT	84103	359-6274
Morris, Elizabeth T.	4177 Mathews Wy	SLC	UT	84124	277-9724
Morris, P. Sharon	967 Wellwood Rd #28C	Midvale	UT	84047	255-1020
Morris, Steve & Shirlyn	824 S. 850 E.	Bountiful	UT	84010	298-7322
Morrison, Betty & Samuel	21 Heritage Rd.	East Lyme	CT	06333	739-2505
Morrow, Carolyn	778 -6th Ave.	SLC	UT	84103	322-4191
Motley, Keith	866 Diestel Rd	SLC	UT	84105	582-8305
Muhlhausen, Katherine	842 Garfield Ave	SLC	UT	84105	466-7749
Murray, Clark	4119 West 5050 South	Kearns	UT	84118	964-8737
Myers, Robert G.	2098 E. 4415 S.	SLC	UT	84124	466-1705
Myrup, Jaelene V.	1850 Connor St	SLC	UT	84108	583-1678
Nackowski, Cecilia	1183 Princeton Ave	SLC	UT	84105	363-8314
Naef, Val	4228 S. 900 E. #2	SLC	UT	84124	262-6466
Nall, Lyn	382 Garfield	SLC	UT	84115	467-4043
Nash, Fred	2745 Willow Hills Dr	Sandy	UT	84092	943-6906
Nauman, Ralph	721 S. 600 W.	Brigham Cty	UT	84302	723-5175
Neese, Jerry&Elizabeth	2264 Foothil Dr	SLC	UT	84109	277-0701
Neff, Nancy	1421 Wilson Ave	SLC	UT	84105	277-8425
Negler, Stephen	741 S. 300 E.	Farmington	UT	84025	451-5892
Nelson, Deanne	P.O. Box 1439	Orem	UT	84057	377-5780
Nelson, Marian F.	601 Hollywood Ave	SLC	UT	84105	486-9775
Nestel, Arnold & Dana	1630 St.James Pl	SLC	UT	84121	277-8840
Netelbeek, Ton A.	1523 Canterbury Dr	SLC	UT	84108	582-1381
Nibley, W. Bruce	990 S. 1700 E.	SLC	UT	84108	583-1513
Nicol, James	4989 Eastridge Ln #198	Holladay	UT	84117	277-9048
Niederhauser, Jay & Sandy	3430 S. 3610 E.	SLC	UT	84109	278-1797
Novak, Vera M.	1469 Stratford Ave	SLC	UT	84106	487-6034
Novak, Rose	1469 E. Stratford	SLC	UT	84106	487-6034
O'Brien, Coleen	110 E. 7500 S.	Midvale	UT	84047	
O'Dell, Marilyn A.	1120 Canyon Rd #23	Ogden	UT	84404	393-7225
O'Dowd, Joseph	1534 Park St	SLC	UT	84105	485-1483
Oakes, Kevin D.	2760 Nila Wy	SLC	UT	84124	
Ogden, Stewart & Joan	2523 E. 1700 S.	SLC	UT	84108	583-4410
Ohlendorf, Paul	1151 W. Clubhouse #2005	Murray	UT	84123	263-2683
Ohlsen, Bill & Ruth	1224 -2nd Ave.	SLC	UT	84103	364-2159
Oilello, Lidia	3182 Sagebrush Cir	SLC	UT	84121	943-3321
Oliphant, David	1176 Princeton	SLC	UT	84105	581-1075
Olive, Jim	6366 Cobblersrock Ln	SLC	UT	84121	277-5526
Olsen, Allen	4575 Fortuna Wy	SLC	UT	84124	272-6305
Olsen, Craig & Pamela	1116 N. 1300 E.	Layton	UT	84041	544-2495
Olsen, Steven L.	1218 Emerson Ave	SLC	UT	84105	466-7300
Olson, Bill	373 "E" St	SLC	UT	84103	355-2409
Olson, Jon C.	1558 Michigan Ave	SLC	UT	84105	583-6214
Orr, Nancy	1023 - 3rd Ave #3	SLC	UT	84103	532-5514
Othmer, Bobbie	1857 Yalecrest Ave	SLC	UT	84108	582-3514
Overfield, Theresa	172 Braewick Rd	SLC	UT	84103	359-6274
Owens, Cindy	1376 Lincoln St.	SLC	UT	84105	487-2018
Pace, Jeffrey R.	173 "K" St	SLC	UT	84103	532-2300
Pack, Ed	1830 E. 9800 S.	Sandy	UT	84092	571-4484
Palfrey, Audry	2696 S. 1990 E.	SLC	UT	84106	485-3927
Palosky, Jennifer	949 Wellspring Rd 24H	Midvale	UT	84047	561-4702
Palumbos, Alan	1522 S. 1000 E.	SLC	UT	84105	487-6491
Parker, Gary L.	2397 Newcastle Dr	Sandy	UT	84092	942-2232
Parkinson, Donna S.	4662 C Br. Willow Cv	SLC	UT	84117	278-7214
Parks, Lee	2921 Morgan Dr	SLC	UT	84124	278-8066
Parry, David	12425 S. 3600 W.	Riverton	UT	84065	254-6532
Partridge, Clark & Katy	4278 S. Adonis Dr	SLC	UT	84124	277-3486
Partridge, Erne & Eli	P.O. BOX 940	Crestline	CA	92325	444-3145
Paryzek, Vladimir	2103 E. 3300S. #D	SLC	UT	84109	467-8446
Patch, Dan	5054 S. 1300 E.	SLC	UT	84117	266-2030
Pater, Sherie	5712 St.James Pl	SLC	UT	84121	278-6661
Paton, James A.	P. O. Box 97000	Kirkland	WA	98083	000-0008
Patterson, Russell	2955 S. 3145 W.	WVC	UT	84119	973-6427
Paulsen, Joel	225 Spencer	SLC	UT	84103	328-3067
Pearson, Ross	2958 Ida Circle	SLC	UT	84106	486-0455
Pearson, Vicki	2220 E. 4800 S.#205	SLC	UT	84117	277-4281
Pechina, Sue	7874 S. 155 E.	Sandy	UT	84070	255-3389
Pecora, Peter	3068 Plateau Dr	SLC	UT	84109	486-5718

Wasatch Mountain Club
Membership List December 1987

NAME	ADDRESS	CITY	ST	ZIP	PHONE
Pellatt, Morton	2599 Valley Vw Ave	SLC	UT	84124	278-5607
Perez, Ronald	5690 S. Ventnor Av	SLC	UT	84121	278-0923
Perkins, Karen	2225 Fardown Ave	SLC	UT	84121	272-2225
Perkins, Michelle	1980 S. 50 W.	Bountiful	UT	84010	295-6466
Petersen, O'Dell & Edith*	866 Pacific Ave	SLC	UT	84104	355-7216
Peterson, John & Eleanor	5632 S. Park Pl. E.	SLC	UT	84121	277-8817
Peterson, John & Marti	1780 Cam del Cieniga	Tucson	AZ	85715	722-5086
Peterson, Larry & Valerie	1230 E. 8285 S.	Sandy	UT	84070	255-5245
Peterson, Lois	3751 S. 810 E.	SLC	UT	84106	262-6720
Peterson, Normand L.	1606 Laird Ave	SLC	UT	84105	581-0976
Peterson, Rikki	1374 Embassy Wy	SLC	UT	84108	583-4766
Peterson, Cindy	3124 E. Louise Ave	SLC	UT	84109	484-2104
Peterson, Judy	3642 E. Kaibab Cr.	SLC	UT	84109	
Petrick, Leslie	3978 Emigration Can	SLC	UT	84108	583-4271
Piani, James V.	1628 St.Charles Pl	SLC	UT	84121	943-8607
Piepkorn, Michael&Shelley	3157 Creek Rd	SLC	UT	84121	943-3498
Pierce, Jon	6372 Boxwood Rd	SLC	UT	84121	277-1168
Pierce-McCaig, Camille	2911 Oakview Cir	SLC	UT	84121	942-2960
Pietsch, Bruce	835 Emerson Ave	SLC	UT	84105	467-1058
Pine, Tim	1423 S. 400 E.	SLC	UT	84115	484-2079
Pistone, Joseph & Sondra	4204 College Dr	Ogden	UT	84403	621-2564
Plackis, Damon	609 Castleman Ct	Keller	TX	76248	
Pobanz, Norman	4514 Driftwood Dr.	SLC	UT	84123	266-3703
Pollyea, Barbara	1585 S. 1400 E.	SLC	UT	84105	466-2365
Pompa, Janiece	1450 Roosevelt	SLC	UT	84105	485-3116
Poorman, Nancy W.	3649 Mtn Oaks Dr	SLC	UT	84121	943-8084
Porter, Earleen	385 E. Pioneer Av	Sandy	Ut	84070	566-1499
Powelson, Gerald D.	590 N. 300 E.	Am. Fk	UT	84003	756-3004
Powers, Clari	3361-A Millcreek Rd	SLC	UT	84109	488-5958
Prakash, Sanjay	988 WellSpring Rd #21F	Midvale	UT	84047	562-5527
Proctor, Chris	1533 S. 900 E.	SLC	UT	84105	466-1905
Proctor, Joan	1310 Shannon St	SLC	UT	84105	582-8440
Purles, Kathleen	4647 Idlewilde Rd	SLC	UT	84124	
Quinn, Barry G.	1605 Lakewood Dr	SLC	UT	84117	272-7097
Ramon, Janet	1065 N. 400 W.	Bountiful	UT	84010	298-4317
Randall, Nance	1534 Park St	SLC	UT	84105	485-1483
Ranney, Charles A.	940 Donner Wy #470	SLC	UT	84108	583-1092
Rappaport, Rick & Helen	1495 Harvard Ave	SLC	UT	84105	581-9945
Raskin, David & Marga	1865 Herbert Ave	SLC	UT	84108	582-6396
Rathjen, Randall	12858 S. 1300 E.	Draper	UT	84020	571-3309
Rausch, Timothy & Judith	750 Kensington Ave	SLC	UT	84105	466-1245
Rausch, Louise	48 W. 300 S. #1904 N.Twr	SLC	UT	84101	328-1290
Ray, Loretta Joy	1750 E. 4800 S. #41	SLC	UT	84117	272-6116
Read, Deborah	234 Spencer Ct. #A	SLC	UT	84106	531-0552
Reade Bauer, Janet	461 Country Cb Rd.	Stnsby Pk	UT	84074	882-8123
Reichert, James	986 -3rd Ave #2	SLC	UT	84103	537-7421
Reichmuth, Charles F.	3193 S. 2700 E.	SLC	UT	84109	483-1542
Reichmuth, Eric D.	865 Patterson(Bsmt)	Ogden	UT	84403	621-3834
Reid, John & Barbara	681 - 17th Ave	SLC	UT	84103	363-5079
Reinhold, Dick & Sunny	3480 Monte Verde Dr.	SLC	UT	84109	272-2823
Rentmeister, Jay	12862 S. 1830 W.	Riverton	UT	84065	254-3722
Revitte, Marian	1001 McDonald Wy #5	Bakersfield	CA	93309	834-3241
Reynolds, Bonnie	790 Three Fountains Dr	Murray	UT	84107	263-2788
Rhoades, Anna Marie	3003 Clover Ln	Eules	TX	76039	571-2500
Richards, Barbara J.	3005 Plateau Dr	SLC	UT	84109	484-8097
Richardson, Don	8974 S Sutton Wy	Sandy	UT	84092	942-7016
Richardson, Paul W.	6690 S. Artesion Wy #31	SLC	UT	84121	261-3285
Riches, Patti	5008 La Contessa Dr	SLC	UT	84117	262-2195
Richey, Bob & Dee	225 -5th Ave	SLC	UT	84103	000-0000
Richey, Dale	1403 Lombardy Ct	SLC	UT	84121	278-1134
Rieke, Gina	2998 Kohala Dr.	SLC	UT	84117	277-6154
Riley, John E.	3639 Palisade Dr	SLC	UT	84109	485-2567
Riley, Colleen	3919 S 1900 W #L211	SLC	UT	84119	
Rilling, Hans	1544 Emerson Ave	SLC	UT	84105	487-0166
Robbins, Kathy J.	1251 E. 600 S.	SLC	UT	84102	582-1340
Roberson, William H.	3848 Cliff Dr	SLC	UT	84109	278-3822
Robins, Beth & Harold	2141 Camino Way	SLC	UT	84121	942-6882
Robison, Oscar & Phyllis	2584 E. 6485 S.	SLC	UT	84121	943-8500



2175 SOUTH 900 EAST, SUGARHOUSE

466-3971/487-3366



702 East 100 South, Salt Lake City / 359-9361



702 Third Avenue
533-8671

Wasatch Mountain Club
Membership List December 1987

NAME	ADDRESS	CITY	ST	ZIP	PHONE
Rockman, Roz	1415 Sigsbee Ave	SLC	UT	84103	363-8318
Roderick, Julie	1341 E. 4750 S.	SLC	UT	84117	486-4870
Rogalski, Robert	8557 S.Kings Cove Dr.	SLC	UT	84121	942-8142
Rollins, Terry L.	1587 Denver St	SLC	UT	84115	467-5088
Romanofski, Kathleen	839 Fairmont Cir #1	SLC	UT	84106	467-9164
Rosqvist, W.V.	281 S. 1000 E.	Bountiful	UT	84010	295-0458
Ross, Howard & Barbara	7089 S.Pinecone St.	SLC	UT	84121	943-3370
Roundy, Mike	2221 Keller Ln	SLC	UT	84109	278-9752
Rowe, Ione	84 "R" St. #6	SLC	UT	84103	363-3814
Rowles, Genevieve	1464 E. Foxbord Dr. #2	SLC	UT	84106	272-3178
Rubinfeld, Paul	465 St.Michaels #204	Sante Fe	NM	87501	473-4241
Rumbellow, David	1412 Wilson Ave	SLC	UT	84105	277-8425
Russell, Robyn	1518 Sunnyside Ave	SLC	UT	84105	583-3228
Ruzicka, Jim	P.O. Box 3813	Park City	UT	84060	649-2526
Ryburn, Frank	1350 West North Temple	SLC	UT	84116	596-2069
Sayre, Wm. & Linda	2249 Wellington St.	SLC	UT	84106	486-1196
Schilling, Irene O.	752 Emerson Ave	SLC	UT	84105	487-5343
Schleicher, John & Diane	3502 Green Hls Wy	Sandy	UT	84092	943-0693
Schmidt, Marv	1615 E. 1650 N	Heber	UT	84032	654-3717
Schneider, Edward	155 S.W. 89th Ave.	Portland	OR	97225	292-6896
Schoenberg, Andrew	1471 Michigan Ave	SLC	UT	84105	583-3193
Schulthies, Valerie	314 Ivy Ln	S.Salt Lake	UT	84115	237-2100
Schwartz, Jill	140 "K" St #1	SLC	UT	84103	328-4459
Scott, Marshall	2232 Foothill #304	SLC	UT	84109	484-7013
Sedlar, Connie	717 S. 1300 E.	SLC	UT	84102	582-1349
Seeburg, Karin M.	1515 Lincoln St	SLC	UT	84105	532-4870
Seeley, Donn M.	475 S. 1200 E.	SLC	UT	84102	583-3143
Seiner, Marty	1475 Federal Heights	SLC	UT	84103	328-0796
Sells, Bill	2205 E. Buttonwood	Sandy	UT	84092	942-3612
Sewell, James W.	4090 S. 300 E. #F	SLC	UT	84107	268-3975
Shane, James & Elfriede*	9755 Wasatch Bl	Sandy	UT	84092	942-5891
Shaughnessy, Carol	170 Lincoln St.	Midvale	UT	84047	255-2147
Shepard, Wm & Charlene	4135 Morris St	SLC	UT	84119	964-2128
Shepard, Shirley	1446 E. 8545 S.	Sandy	UT	84092	255-3151
Sherman, Rick	350 S. Elizabeth #11	SLC	UT	84102	583-5490
Sherwood, Amy L.	374 Crimson Cir. #11	SLC	UT	84115	364-1709
Shipway, Lois Anne	3653 S. 1300 E. #8	SLC	UT	84106	277-6875
Shumway, Wayne	1957 Longview Dr	SLC	UT	84124	272-3363
Shupe, Kathryn Y.	2992 Lehigh Dr.	WVC	UT	84119	966-3449
Shyluk, Walt	425 S. 1000E. #208C	SLC	UT	84102	531-7424
Siebert, Jeanne A.	P.O. Box 81091	SLC	UT	84108	272-1075
Siebert, Mitzi	1368 E. Sky View Dr	SLC	UT	84124	277-2309
Silberstorf, Tom	2416 Elizabeth St #4	SLC	UT	84106	467-5734
Silcox, Geoff	169 "S" St.	SLC	UT	84103	531-6665
Silva, Brian	1111 Medical Plaza	SLC	UT	84112	583-6665
Sims, Phyllis D.	3775 Birch Dr	SLC	UT	84109	272-6549
Singer, Mike & Cass	7604 S. Quicksilver Dr.	SLC	UT	84121	942-8302
Sippel, Claudia Taylor	1820 E. Spring Ln	SLC	Ut	84117	277-8469
Slagle, Wayne & Betty Jo	2500 Cinnabar Ln	SLC	UT	84121	943-1695
Slattery, Marty	7256 S. Pippin Dr	SLC	UT	84121	943-3145
Smedley, Dona M.	6145 D.Quixote Dr.	Bennion	UT	84118	964-8139
Smeeding, Sandra	1361 Glenmare	SLC	UT	84105	581-1385
Smith, Gibbs M.	123 N. Flint St	Kaysville	UT	84037	544-0129
Smith, James R.	6722 S. 1560 E.	SLC	UT	84121	943-6004
Smith, John R.	5494 Spurrier Rd	SLC	UT	84107	262-9088
Smith, Judith C.	4243 Olympic Way	SLC	UT	84124	277-0536
Smith, R. Gary	P.O. Box 134	Farmington	UT	84025	546-4312
Smith, Suzi	1569 E Waterbury Dr	SLC	UT	84121	277-2071
Smith, David & Penelope	1896 E. 6400 S.	SLC	UT	84121	278-6515
Smith, Jill	972 E. 4530 S.	SLC	UT	84117	266-2175
Smith, Thomas	SSW P.O.Box 786	Milwaukee	WS	53201	332-8935
Smith, Doug	114 Seminole Dr	Pittsburgh	PA	15228	531-1392
Smith, Patricia A.	407 E. 4140 S. #131	SLC	UT	84107	261-3209
Smith, Richard *	P. O. Box 339	Tooele	Ut	84074	882-1120
Smith, Shirley	P. O. Box 943	Park City	UT	85060	649-7430
Smock, Kathy	3782 W. 3240 S.	WVC	UT	84120	967-6305
Snow, Robert J.	1024 E.825 N.	Layton	UT	84041	544-4742
Snyder, Robert & Kezia	2783 Melbourne St	SLC	UT	84106	484-7539

Wasatch Mountain Club
Membership List December 1987

NAME	ADDRESS	CITY	ST	ZIP	PHONE
Sobczak, Marge	P.O. Box 17119	SLC	UT	84117	363-5319
Sohler, Joyce E.	3055 S. 1935 E.	SLC	UT	84106	487-6536
Solarz, Priceilla	1233 S. 800 E.	SLC	UT	84105	467-2763
Soltis, William E.	2624 S. 1800 E.	SLC	UT	84106	466-9735
Spear, Martha	1119 -1st Ave.	SLC	UT	84103	359-5712
Spear, Mary Ann	1517 Lincoln St	SLC	UT	84105	467-5042
Spence, Jean	217 S. 1200 E. #6	SLC	UT	84102	583-1374
Spencer, Penny	850 Wilmington Ave	SLC	UT	84106	467-6441
Stanhope, Helen	824 Belmont Ave	SLC	UT	84105	355-5090
Stark, Douglas	2698 Wren Rd	SLC	UT	84117	277-8538
Staten, Tone	1696 E. 6450 S.	SLC	UT	84121	272-5180
Steele, Adam	2660 E. Barbey Dr	SLC	UT	84109	484-6858
Steffey, Frank & Vickie	4135 S. 1615 E.	SLC	UT	84124	277-2509
Steiner, Rick & Sheila	1356 Dover Rd	SLC	UT	84108	582-5067
Stensaas, Suzanne S.	2460 Lynwood Dr	SLC	UT	84109	466-9050
Steorts, Lee D. *	5157 S. 1870 E.	SLC	UT	84117	272-6381
Stephens, Tom & Mauritia	4434 Park Hill Dr	SLC	UT	84124	486-2994
Stevens, Elissa	1567 Waterbury Wy	SLC	UT	84121	272-7215
Stevens, Joan B.	3461 S. 3125 E.	SLC	UT	84109	467-9644
Stevens, Michael C.	1634 Sunnyside Ln.	SLC	UT	84108	583-4127
Stevens, Robert Bruce	2862 Oquirrh Dr	SLC	UT	84108	582-3072
Stevens, Mary	6580 S. James Pt Dr #6P	Murray	UT	84107	266-0441
Stevenson, T.Q.	4125 Meadow Hill Ln	Fairfax	VA	22033	378-5188
Stevenson, Bob	3423 E. Oakledge	SLC	UT	84120	
Stewart, Larry	1861 Hillcrest Ave	SLC	UT	84106	485-7818
Stewart, Susan Hidel	1343 Roosevelt	SLC	UT	84105	582-8219
Stewart, Doug	4084 S. 570 E. #11H	SLC	UT	84107	269-1833
Stockslager, Gayle	2588 Village Cir	SLC	UT	84108	582-1429
Stodt, John A.	1182 - 4th Ave #B	SLC	UT	84103	521-4058
Stoker, Wayne F.	3641 Oakview Dr	SLC	UT	84124	278-8907
Stone, Richard M.	1169 Sunnyside Ave	SLC	UT	84102	583-2439
Stone, Sandy	2311 Cinnabar Ln	SLC	UT	84121	942-2551
Stoney, Calude & Julia*	1864 Hubbard Ave	SLC	UT	84108	582-8828
Stoney, Julie	1420 S. 1400 E.	SLC	UT	84105	581-1926
Storer, Suzanne	1799 Navajo Dr	Ogden	UT	84403	479-5035
Stowe, Arthur	2802 Morgan Dr	SLC	UT	84124	277-6747
Strickland, Nick & Marie	4293 Deer Run Ct.	CrossPlains	WI	53528	798-3611
Strickland, Margaret	2754 S. Blair	SLC	UT	84115	487-8036
Strong, Kenny	147 S. 900 E.	Layton	UT	84041	546-1344
Sukow, Jack	2747 Grandview Circle	SLC	UT	84106	484-3814
Summerall, Lydia	860 E. Southlake Dr. 18H	Murray	UT	84107	268-0720
Summers, Steve	1150 Wilson Av	SLC	UT	84105	
Sussman, Deborah	3786 Highland Dr	SLC	UT	84106	278-3814
Sutton, John L.	P.O. Box 272	Eden	UT	84310	NONE
Swan, Steve	1147 E. 900 S.	SLC	UT	84105	583-2051
Swaner, Paula	2660 Evergreen Av	SLC	UT	84109	278-3124
Swanson, Chris	155 McClelland St	SLC	UT	84102	359-3159
Swanson, George L.	1420 Logan Ave	SLC	UT	84105	466-3003
Swanson, Larry	3491 Oakview Dr	SLC	UT	84124	278-3269
Swanson, Leslie	339 E. 600 S. #1112	SLC	UT	84111	364-4074
Swanson, Mark	1222 Roosevelt Ave	SLC	UT	84105	487-0917
Swanson, Steve	2847 Commonwealth Ave	SLC	UT	84109	484-5808
Swanson, Fred	1090 Lake St	SLC	UT	84105	359-6632
Sweeney, Mary Jo	2996 Cascade Way	SLC	UT	84109	
Sweeney, Jim	816 E. Shady Cr Pl	SLC	UT	84106	485-4334
Swenson, Gordon J.	1120 Windsor St #2	SLC	UT	84105	521-8026
Sysak, Christel	8275 Top o'the World Dr	SLC	UT	84121	943-0316
Tanner, David	433 E. 3400 S.	Bountiful	UT	84010	292-6309
Tawa, Dan	3396 Terrace Vw Dr	SLC	UT	84109	467-5009
Taylor, Lee H.	577 Redondo Ave	SLC	UT	84105	466-7566
Taylor, Michael & Vicky	10 N. Bullmoose Dr	Chandler	AZ	85224	963-8539
Taylor, Randall & Peggy	610 E. 4010 S.	SLC	UT	84107	262-6524
Taylor, Sandra C.	1123 Vista Vw Dr	SLC	UT	84108	583-2306
Taylor, Torrie	6278 Steeple Ch Ln	SLC	UT	84121	272-4930
Taylor, Douglas J. N.	124 E St C/O C J Call	SLC	UT	84103	
Taylor, Joanna	934 McClelland	SLC	UT	84105	521-7596
Taylor, Barbara	1819 Kensington	SLC	UT	84108	484-7558
Taylor, Susan	1192 McClelland St	SLC	UT	84105	485-7455

Wasatch Mountain Club
Membership List December 1987

NAME	ADDRESS	CITY	ST	ZIP	PHONE
Taylor, Gloria	850 N. H'Way 89 #2E	N. Salt Lk	UT	84054	298-5609
Teismann, Trudy	8691 S Spartan Dr	Sandy	UT	84070	255-6416
Thalmann, Joan	3575 S. 3200 W.	WVC	UT	84119	968-6302
Thomas, Dan & Judy	133 E. Celeste Ave.	Midvale	UT	84047	561-5667
Thomas, Dr. Samuel F. *	123 - 2nd Ave #1107	SLC	UT	84103	355-1851
Thomas, Katherine	717 -5th Ave #203	SLC	UT	84103	521-2108
Thomas, Susan	P. O. Box 2045	Alta	UT	84092	742-2011
Thorndale, Bill	1155 E. 300 S. #10	SLC	UT	84102	582-5210
Thorne, Don	2220 E. 4800 S. #179	SLC	UT	84117	272-3854
Threedy, Debora	707 -5th Ave.	SLC	UT	84103	581-5165
Toelcke, George A.	PO Box 828	Park City	UT	84060	649-7889
Tolboe, Dennis & Lyn	1535 E. 3010 S.	SLC	UT	84106	466-2673
Tomky, Donna	1415 Sigsbee Ave	SLC	UT	84103	363-8318
Tomlinson, Gary & Betsy	1774 Yale Av	SLC	UT	84108	583-3980
Toporoff, Ralph	2135 Preston St	SLC	UT	84106	487-2704
Torri, Tony	3395 Enchanted Vw Dr.	SLC	UT	84121	942-2472
Townley, Becky	1322 Crandall Ave	SLC	UT	84106	487-1620
Traeger, Maureen	P. O. Box 112	Park City	UT	84060	649-7685
Traver, Jimmy & Dorothy	2871 Wardway	SLC	UT	84124	277-7548
Treshow, Mike & Marilyn	1228 Bryan Ave.	SLC	UT	84105	467-8814
Treshow, Michael VII	1551 E. 4160 S.	SLC	UT	84124	278-6338
Tuohig, Barry & Gail	1464 Parkway Ave	SLC	UT	84106	485-8825
Turkanis, Stuart A.	2C 219 Medical Cntr	SLC	UT	84132	487-7024
Van Duren, Dennis	1390 Rainsborough Rd	SLC	Ut	84121	272-1233
Vandersteen, Marty	752 E. Lakepoint Dr #40	Murray	UT	84107	261-0643
Vanderwilt, Jo Ann (Jody)	4161 S 2700 W #3c	SLC	UT	84119	969-7765
Veranth, John & Martha	4460 Ashford Dr	SLC	UT	84124	278-5826
Viavant, Bill	CVSR Box 2002	Moab	UT	84532	259-8898
Viavant, June	2590 E. Lincoln Ln	SLC	UT	84124	278-0565
Vickery, David	1374 Thornton Ave	SLC	UT	84105	583-7064
Wachter, Donald & Arlene	4198 Aspen Ln	Eden	UT	84310	745-6688
Wahrhaftig, Austin & Ruby*	2239 Logan Ave	SLC	UT	84108	581-1851
Walker, C.H. (Chuck)	3347 Stanton Dr	WVC	UT	84120	964-1943
Walker, Neff	P.O. Box 733	Ketchum	ID	83340	788-2636
Wallace, David	1998 Windsor St	SLC	UT	84105	466-2719
Wallace, Kip	P.O.Box 203	Wilson	WY	83014	532-5122
Wallace, Lowell Hal	1203 E. Violet Dr	Sandy	UT	84070	572-3213
Wallentine, Elise K.	1741 Holladay Bl	SLC	UT	84124	572-6530
Wallentine, Keith & Kathy	3627 Palisade Dr	SLC	UT	84109	487-7226
Walsh, Tom	3105 Lynncrest Cv	SLC	UT	84118	969-5842
Walter, Richard	926 Malvern	SLC	UT	84106	467-4282
Walters, Terence & Janet	2085 Rolling Hls Dr.	Morgan Hill	CA	95037	779-1629
Walthall, Anne	624 S. 800 E.	SLC	UT	84102	521-2538
Wardle, James & Jewel	1315 S. 200 E. #2	SLC	UT	84115	487-5598
Warner, Lori	835 E. 100 S.	SLC	UT	84102	534-0271
Watson, Hazen	3483 Westlake Cr	WVC	UT	84119	964-1173
Weatherbee, Robert	4748 Ichabod Ave	SLC	UT	84117	278-2829
Weatherbee, Judy	263 E. Edith Ave.	SLC	UT	84111	000-0000
Webb, Lorraine	8698 Gladiator Wy	Sandy	UT	84070	566-0868
Weber, Ronald H.	1163 Garfield Ave	SLC	UT	84105	467-3194
Wechsler, Ann	2475 Emerson Ave	SLC	UT	84108	583-2090
Wehan, Paul & Sharon	6771 S. 2350 W.	WVC	UT	84084	569-0457
Weirick, Robert H.	P.O. Box 15584	SLC	UT	84115	487-3477
Wells, Bill & Rebecca	2630 Creek Rd	Sandy	UT	84092	942-1130
Wenberg, Ruth	215 E 4600 S. #5	Murray	UT	84107	262-3438
Wendling, John S.	10472 Leinani Dr	Sandy	UT	84070	571-9136
Wenger, Ray & Susan	3237 W. 10000 S.	S. Jordan	UT	84065	254-2410
Wennhold, Phil & Ann	2180 Beldaire Dr	SLC	UT	84109	466-3300
Westbrook, George	3270 Danish Hls Cir	SLC	UT	84121	942-6071
Weston-Prentiss, Sarah	4399 Doris Wy	SLC	UT	84124	272-0796
Whaley, Randall	4064 W. 6200 S.	Kearns	UT	84118	966-6355
Wheeler, James & Jane	2873 E. 6200 S.	Ogden	UT	84403	479-1618
Whicker, Lisa	986 -3rd Ave #2	SLC	Ut	84103	537-7421
Whitaker, Bryan	1526 Braintree Ct	SLC	UT	84124	272-1945
White, Sandra S.	236 Royal Garden Terrace	SLC	UT	84115	262-4964
White, Alice	2216 Foothill #G115	SLC	UT	84109	467-8637
White, M. Kay	2002 Laird Dr.	SLC	UT	84108	
Whitehead, Art	2460 E. 1200 S.	Heber City	UT	84032	654-4187

Wasatch Mountain Club
Membership List December 1987

NAME	ADDRESS	CITY	ST	ZIP	PHONE
Whitehead, Dex	3160 So.Teton Dr.	SLC	UT	84109	485-8337
Whiteside, Henry	385 - 5th Ave	SLC	UT	84103	355-5944
Whitney, Gary	630 Park St. #9	SLC	UT	84102	521-0158
Whittington, Mary	6877 Well Wood Rd #27D	Midvale	UT	84047	562-5570
Wickham, Alan A.	3814 Birch Dr	SLC	UT	84109	272-7996
Widenhouse, Rebecca	312 S. 500 E. #5	SLC	UT	84102	364-6424
Wiens, Del & Carol	1763 Ann Dell Ln	SLC	UT	84121	272-3182
Wiggins, Robert & Linda	3405 S. 3610 E.	SLC	UT	84109	967-9809
Wilburn, Linda	1930 Laurelhurst Dr	SLC	UT	84108	484-3093
Wilcox, Linda	1056 Barbara Pl	SLC	UT	84102	363-6444
Wilerson, Don	5780 Waterbury Wy	SLC	UT	84121	277-4987
Wilhelmsen, Russell	1123 Vista Vw Dr	SLC	UT	84108	583-2306
Wilkerson, Howard	3490 S. 3650 E.	SLC	UT	84109	486-3774
Williams, George A.	1898 S. 1300 E.	SLC	UT	84105	484-0449
Williams, Jim	2257 E. 9840 S.	Sandy	UT	84092	942-4659
Williams, Lauren J.	957 Elva	Idaho Falls	ID	83401	529-6978
Williams, Linda Lee	3542 S. 2870 W. #25	WVC	UT	84119	964-0387
Williams, J. R.	Rm 1110, Bldg 5222	Dugway	UT	84022	522-4682
Willigan, J. Dennis	1123 Vista Vw Dr	SLC	UT	84108	581-6989
Wilson, Greg	6696 Royal Harvest Wy#30	SLC	UT	84121	943-4169
Wilson, Robert & Jinny	4285 Parkview Dr	SLC	UT	84124	277-7446
Winawer, Hank	2879 Valley View Ave	SLC	UT	84117	277-1997
Wineland, Suzanne	690 E. Brittany Dr #205	SLC	UT	84107	266-2831
Winter, John	3981 S. 900 E. #96	SLC	UT	84124	263-3677
Wise, Mary	2216 Foothill #315	SLC	UT	84109	485-4752
Wise, Ann	44 West 300 S. #906	SLC	UT	84101	355-7719
Wiskowski, Dorothy	1163 Garfield Ave	SLC	UT	84105	467-3194
Withrow, C. Dean & Carol	519 Northmont Wy	SLC	UT	84103	363-0352
Wolf, Sheila M.	9426 Dolomite Wy	Sandy	UT	84070	572-3404
Wong, Cherry	2740 E. Comanche Dr	SLC	UT	84108	583-0368
Wood, James	1966 W. 6255 S.	W. Jordan	UT	84084	968-5634
Woodruff, Dorde W. *	6366 Cobblerock Ln	SLC	UT	84121	277-5526
Woods, Leslie	456 E. 3335 S. #14	SLC	UT	84115	484-2338
Woodward, Roseann	3021 Sequoia Ave	SLC	UT	84109	486-6184
Woody, Connelly & Linda	3035 Plateau Dr	SLC	UT	84109	467-3689
Woody, Robert & Barbara	2212 Vimont Ave	SLC	UT	84109	466-5039
Woodridge, Gene	764 E. Simpson Av	SLC	UT	84106	486-7331
Woolridge, Bryan	186 "F" St #2	SLC	UT	84103	521-4036
Workman, Kenneth & Ann	5085 S. 2500 W.	Roy	UT	84067	825-3448
Wren, Michael	3665 E. 3820 S. #5	SLC	UT	84109	277-5272
Wright, James E.	515 S. 1000 E. #702	SLC	UT	84102	582-1495
Wright, Bob H. & Deana *	3886 N. Holiday Crv	Park City	UT	84060	649-4194
Wright, Robert & Kathy	Old Ranch Rd Box 20	Park City	UT	84060	649-8036
Wright, Terry	2107 E.3300 S. #F	SLC	UT	84109	486-8938
Wyman, Kenneth S.	4165 W. Park Ave	Chandler	AZ	85226	838-9349
Yashko, Paul	540 S. 100 E. #3	Brigham Cit	UT	84302	723-2568
Yates, William & Sarah	625 W. 600 S.	Brigham Cty	UT	84302	723-3853
Yih, Benny	1124 Medical Plaza	SLC	UT	84112	582-2341
York, Ted	1963 S. 1200 E. #609	SLC	UT	84105	487-4096
Young, Carol A.	3675 S. 6830 W.	WVC	UT	84120	250-1229
Young, Marianna	P.O. Box 612	Glen Echo	MD	20812	869-4834
Young, Monty S.	2909 W. 7460 S.	W. Jordan	UT	84084	255-8392
Young, Marianne	8767 S. 1700 W.	W. Jordan	UT	84084	255-0729
Youngbauer, Jim	561 -4th Ave. # 11	SLC	UT	84103	355-1579
Yurich, George A.	3094 Orson Dr	Layton	UT	84041	546-2665
Zeamer, Richard J.	843 - 13th Ave	SLC	UT	84103	355-3751
Zens, Sharon	964 Hudson Ave	SLC	UT	84106	487-9485
Zilincar, Joe	P. O. Box 10358	Arlington	VA	22210	000-0000
Zoerner, Frederick P.	232 E. Taylor St #4	Reno	NV	89502	786-2165
Zwiebel, William J.	3392 Crestwood Dr	SLC	UT	84109	278-1208
Zwierzycki, Ray	784 -6th Ave	SLC	UT	84103	531-8189

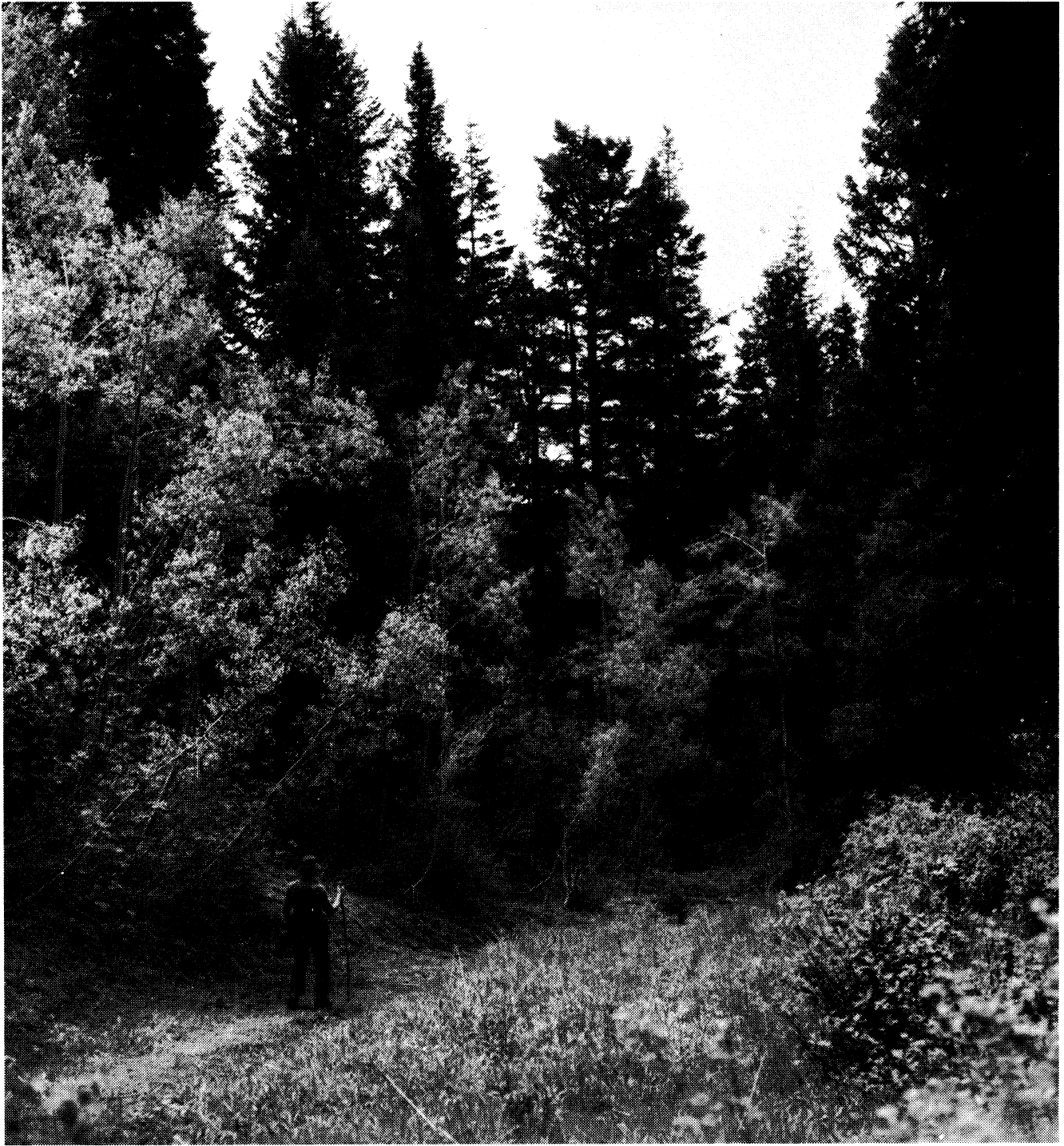


Photo by Alexis Kelner

PHOTO CONTEST!

The Wasatch Mountain Club is planning to publish a new *Wasatch Hiking Guidebook*

OUTSTANDING COLOR PHOTOGRAPHS ARE NEEDED FOR THE COVER

Winning photographs will be published with the photographer's name credited.

Send your entries to:

John Veranth
4460 Ashford Drive
Salt Lake City
Utah, 84124

Entries must be received by December 20, 1987. Include a self addressed envelope for returning your slides or prints.



International Mountain Equipment, Inc.

**Salt Lake's Newest and Most Complete
Source for All Your Mountain Needs**



Hours:
Monday-Friday 10-7
Saturday-Sunday 9-7

Rock Climbing
Ice Climbing
Mountaineering
Backcountry Skiing

**3064 South Highland Drive (next to Villa Theatre)
Salt Lake City, Utah 84106 (801) 484-8073
Box 494, Main Street, North Conway, NH 03860**

Catalogues Available Full climbing library and guidebook selection

IME offers a 10% discount to card carrying WMC members!

DIRECTORY OF AVALANCHE EDUCATION

by Walt Haas
Salt Lake Group, Sierra Club

In addition to the club class described elsewhere in this issue, there are a number of snow safety classes offered by other local organizations. The list below is believed to be accurate at press time; please contact the organization listed for details.

AMERICAN AVALANCHE INSTITUTE
Box 308
Wilson, Wyoming 83014
(307) 733-3315

Level I Backcountry Short Courses:
Dec 10-13, \$95, Salt Lake City & Alta
Register with Wasatch Touring
702 East 100 South
SLC UT 84102
359-9361

Jan 1-3, \$80, Park City & Park West
Register with White Pine Touring
363 Main Street
Park City, UT 84060
649-8710

Level II Course:
Dec 14-15 at Alta
Register with AAI at above address

BIG COTTONWOOD NORDIC CENTER
Box 17848
SLC UT 84117
272-7613

Level II Course. \$80. For people who already have a basic knowledge of avalanches. Lecture Dec 15 & 16, 7 pm to 9 pm at the REI store in Salt Lake. Field weekend Dec 19 & 20, ski in to a yurt (you provide your own skis, overnight gear, and food.) If you have questions, call Nils at the number above.

HANSEN MOUNTAINEERING INC
757 North State Street
Orem, UT 84057
226-7498

XC Skiers Avalanche Course. \$60.
Dec 16, 7 pm, two hour lecture at HMI.
Dec 19, 8:30 am, 6-8 hour outdoor session.

INTERNATIONAL MOUNTAIN EQUIPMENT
3064 Highland Drive
SLC, UT 84106
484-8073

Snow safety lecture by Nils Abramson
Dec 9, 7:30 pm. FREE

UNIVERSITY OF UTAH
Division of Continuing Education
SLC, UT 84112
581-6461

Geography 526R-1. Snow dynamics and technical avalanche forecasting. 4 hours credit, \$215 (resident) tuition. Winter quarter 1988 (Jan 4 - Mar 17) Instructor: Peter Lev, H:571-9209, W:742-3595. Tu-Th

Recreation and Leisure 385. Avalanche Seminar. 3 hr credit, \$206 (resident) tuition. Instructor: Pat Lambrose. 385R-30: Jan 4,11,13,20 at 7:15-10:15 pm, outing Jan 16-17. 385R-31: Jan 4,25,27, Feb 1 at 7:15-10:15 pm, outing Jan 30-31.

WASATCH BACKCOUNTRY RESCUE GROUP

Dec 10, 7-9 pm. A free avalanche safety course oriented toward snowboarders. Location not available at press time Call Nils at 521-2542 for details.

WHITE PINE TOURING CENTER
363 Main Street
Park City, UT 84060
649-8710

Pieps clinic at the touring center in the pro shop on the Park City golf course. Free. Dec 8, 15, 22, 29 at 5:00 pm.

Basic avalanche lecture at the touring center. Dec 16 at 7:00 pm. Free.

Basic avalanche field day at Park West. Skis required; price includes one ride up the lift. December 20 at 8:00 am. \$12.

AVALANCHE CLASS

JANUARY 9, 8:00 AM - ZION LUTHERAN CHURCH

An avalanche class will be held on Saturday, January 9, 1988 at Zion Lutheran Church at 1070 South Foothill Drive. The class is sponsored jointly by the Wasatch Mountain Club and the Salt Lake Group of the Sierra Club, and is open to the public. An optional small donation will be requested, to help defray the expense of giving the class. If you don't have any money, come anyway.

The class is designed for persons who have no prior knowledge of avalanches. The topics which will be covered are:

- * The physical properties of snow, and how the mountain snow pack changes over time.
- * The effect of terrain on avalanche hazards.
- * How to choose a route with minimum avalanche hazard.
- * How to organize your skiing party so that the members are exposed to as little danger as possible.
- * How to rescue somebody from an avalanche.
- * How the Utah Avalanche Forecast Center makes its hazard predictions, and how to interpret the recordings.

The class will consist of two parts. The morning half will be a lecture, which will start at 8 am. Numerous slides and movies will be shown, including a home movie of a local skier being caught in an avalanche. In the afternoon, we will go into the mountains and practice rescue techniques on some appropriate snowy hillside.

You will not need skis or showshoes, but be sure to dress warmly for the afternoon section. Make your own arrangements for lunch (e.g., bring it.) Zion Lutheran is located at the intersection of 2100 East and Foothill. The morning lecture will be taught in the basement, which is entered from the west side (the back of the building.)

Experience has shown that the major reason for avalanche fatalities is ignorance. There have been a number of deaths in recent years of people who were apparently unaware that they were in danger. There have also been a number of people rescued alive after being buried in avalanches; in most cases, they lived only because their companions were prepared to deal promptly and efficiently with the situation. Therefore, this course is strongly recommended for all cross country skiers. It is designed to appeal to people who don't have the time or money to take one of the more extensive professional avalanche courses.



CONSERVATION NOTES

by Chris Biltott and Mary Fleming

Water Schemes

The Bureau of Reclamation (BOR) is seeking additional appropriations for the Colorado River Storage Project (CRSP). Congressman Owens has apparently agreed to sponsor a \$750 M. bill for the CRSP, including \$254 M. for Section 8 "Conservation, Recreation, and Mitigation." To the BOR this means picnic tables, boat docks, dams, camper parks, relocated fisheries, and game refuges. No thought has been given to the existing ecology. For example, there are no funds for biological surveys of species endangered by the project, such as relict amphibian or mollusk communities. When asked what "mitigation" means, the presenter stated that the BOR prefers the term "compensation." For example, Utah will lose streams and riparian habitat, but will receive water recreation facilities. Attempts to discuss the fate of the Strawberry River failed because the BOR was not prepared to discuss "details" of the project. Sensing the rising confusion and frustration, Owens terminated the presentation.

The Utah portion of CRSP includes the the Central Utah Project (CUP), a scheme to siphon water out of streams on the south slope of the Uintas, through a series of impoundments, down Provo Canyon, and into agricultural areas in central Utah. The Nature Conservancy is trying to work with the BOR and buy out developers to preserve a portion of the Strawberry River, one of the few remaining wild trout streams in Utah. Other Section 8 projects in Utah might include a pump-back operation and canals to carry silt-laden water away from fishing areas.

As it nears completion, CRSP looms as a multi-billion dollar engineering curiosity and economic-ecological nightmare. Utahns have bought into this project for decades. After all, it brings federal money into Utah, provides construction jobs, and creates a new State Power Boat Refuge. CRSP is bound up in politics and water law beyond anyone's comprehension, and decision making has been abdicated to the engineers, politicians and lawyers. The public's role in CRSP is to simply foot the bill. When we asked what would happen if we stopped funding these projects, we were answered with a hard glare and "Its the Law." Impertinent questions like this apparently threaten BOR engineer job security.

38 Given the rising national debt and resultant economic

difficulties, one wonders how long public support for such projects will continue.

Pipe Dreams

The Salt Lake City/County Board of Health has visions of a sewer for Big Cottonwood Canyon. The logic goes like this: A sewer was installed in Little Cottonwood and water quality improved. Ergo, installation of a sewer in Big Cottonwood will improve its water quality. No substantive evidence exists to support this assertion. There has been no engineering study of Big Cottonwood Canyon water quality. There are also no federal funding available for a Big Cottonwood sewer, so Solitude has maneuvered the Board of Health into supporting their lodging construction plans by offering to build the sewer.

Would the Solitude sewer improve Canyon water quality? As presently conceived, it would service mainly the new Solitude construction. Those residences within 300 ft of the sewer's path would also be forced to hook in--an expensive proposition for cabin owners. Without a study, it is not known how the Solitude Plan, with increased road and parking lot runoff, would affect water quality.

Would other users voluntarily join the sewer? The Dept. of Health would like to see Brighton and Silver Fork form water improvement districts and bring the pipe dream to reality. They would also encourage the Forest Service to hook trailhead facilities into the sewer. So far, no one has stepped forward to champion extension of the sewer to Brighton, Silver Fork, or the outlying residences. The Forest Service is also taking a passive role in the sewer planning process.

A thorough water quality study is needed before any reasonable sewer line decisions can be made for Big Cottonwood Canyon. Until this is done, no one will know what the pollution sources are or if a sewer represents a cost-effective solution to water quality problems. Spending \$40. thousand now for a study could prevent the pipe dream from becoming a multi-million dollar nightmare.

A LETTER OF THANKS FROM THE FOREST SERVICE



United States
Department of
Agriculture

Forest
Service

WASATCH-CACHE NATIONAL FOREST
SALT LAKE RANGER DISTRICT
6944 SOUTH 3000 EAST
SALT LAKE CITY, UTAH 84121

Reply to: 1800
2720
Date: October 28, 1987

✓
Hank Winawer
Wasatch Mountain Club
168 West 500 North
Salt Lake City, Utah 84103
L

Dear Hank:

The Forest Service would like to thank the members of the Wasatch Mountain Club for their participation and fine cooperation on the work project days in July and September of this year. We appreciate your Club's efforts in helping us to maintain inventoried trails and caring for our country's natural resources.

In addition we would like to especially thank Wasatch Mountain Club members Chris Biltoft, Mary Fleming, John Veranth, Norm Fish and Trudy Healy for their efforts in organizing these work days. Appreciation should also be given to Karen Perkins for her continuing efforts to help organize a speaker's bureau for the Wasatch Front area.

We are hoping to continue our joint efforts with your organization into the future. Thank you.

Sincerely,

Dick Kline

RICHARD P. KLINE
District Forest Ranger

by Chris Baierschmidt

Two representatives from the Utah Wildlife Leadership Coalition stopped by during the November board meeting. And, while no decision was made about joining the group, board members were interested in receiving more information about their conservation issues.

Dick Cloward, coalition membership director, said the UWLC represents 31 statewide organizations, ranging from hunters and trappers to conservationists and recreational clubs. The representatives from each organization belong to coalition committees, such as those for protection of public lands, water rights and hunting regulations. It takes a two-thirds majority vote for the coalition to support an issue before the legislators. Protection and conservation, he said, are their chief concerns. "Legislators can wipe anything away with a slap of a pen. It all comes down to the bottom line - when they're not there, they're gone altogether."

Utah Wildlife Federation representative Randy Nielson said UWLC works on the premise of conserving for the benefit of consumptive (hunters) and nonconsumptive (recreational) organizations. He said that his group joined the coalition because of the power behind large numbers. They're more likely to be heard.

People jammed into the auditorium for the public reception of Everett Ruess's work held in late October at the downtown Salt Lake City Public Library. Speakers included Everett's 78 year old brother Waldo, who lives in Santa Barbara, and the two artists - Thomas Carlyle and Stuart Steinhardt - who restored Everett's 50 year old linocuts found in a shed behind Waldo's home.

Waldo was an amusing speaker and turned out to be as much a traveler as his brother, except that Everett preferred burros and wilderness to Waldo's quests in foreign countries. Waldo provided some intimate facts - such as Everett's passion for books by Jules Verne and his reluctance to wear watches - as well as some remarks on Everett's courage to live as he wanted: A Vagabond for Beauty, the title of his locally published biography.

SUWA founder Clive Kinkaid discussed his visit with Waldo which led to the finding of the linocuts. The blocks were then recreated and the prints made on a hand press in much the same way that Everett had made them five decades earlier.

Everett has become somewhat of a folk hero since his disappearance in 1934 while wandering around the Escalante region. He was a poet and an artist with blockprints, and copies of many of his prints have been offered for sale as part of the show sponsored by the Southern Utah Wilderness Alliance. Accompanying this article is one such print, called "Canyon del Muerto." For more information about ordering prints, write the SUWA at P.O. Box 347, Springdale, UT, 84767.



EVERETT RUESS: BLOCKPRINTS OF UTAH AND THE SOUTHWEST

TRIP · TALK

TENT TRADING ON THE TRAIL

Wind Rivers Backpack
September 5-8
by Holly Leeds

We arrived unscathed in 4 vehicles at the campground at the trailhead for the Green River Lakes on Friday. Tents were hastily erected in the dark (have you ever noticed how many club members go good work in the dark?) and we crashed.

Saturday dawned misty and *cold!* How cold was it? Alexis and Lance said the water on their table froze the night before while they prepared dinner. Ken brought a rumor from a non-club group of snow at the 8,000 foot level. Of course, we couldn't see a thing in the mist.

Leader Mike's faith in the weather ("I'll be blamed for it either way, good or bad, so I predict good") was justified. The haze burned off and although clouds rolled by each day, they didn't roll thunder.

Before leaving on the trail, a variety of people decided to share tents. After much discussion, 2 tents were left behind. The women did offer to share their presence for the sake of keeping the peace, but fortunately no duels were fought. Neil and Tom insisted on staying alone to protect their virtue; Ken, Andy, and Doug could have had company but didn't request any.

The trail followed the lake before climbing a set of switchbacks to Porcupine Creek. Several water crossings were easy. Then there was the one with the slimy log that had to be moved. Too many times, way too many times.

Camped out above the river in a grove of trees, we shared good food (thanks for the salsa, Andy), laughs & drinks.

Sunday, everyone went a different way. Mike roamed far and wide from lakes to Porcupine Pass. He even stopped for trail work to make

the river crossing easier. Drawn on by ever more magnificent vistas, Alexis, Lance, Janet, Andy, Chuck, and Le climbed peaks. Their final peak view included the Tetons, the Wind Rivers, and everything in between. Lest you think that the only reward was the view, Chuck and Le are considering going to the Sierras to take Rock Hopping 200. The rest of us (Ken, Doug, Vince, Holly, and Neil) went to the lakes. Doug went the easy way along the trail. For the other four, nothing short of bushwacking straight uphill would do. From a ridge above Lake Valette the four reconnoitered. Our anglers went off to try their hand as the rest returned in a leisurly manner.

Broadway show tunes, barroom ditties, and oldies-but-goodies rang through the hills as the choir sang at night. Even the wind was silent to hear us sing.

Alas, Monday morning and the trek out. Tents dismantled, stoves stashed away, and backpacks loaded, we left. On the way back once again we split, this time to allow several to walk along the other side of the lake. A few lucky moose were even spotted at lunch.

The penultimate reunion failed - the pizza place in Kemmerer was closed and only 7 people found each other. Did the others see our note? Who knows? And who knows who slept with whom in the Windies? Only The Shadow knows!

Participants: Michael Budig (Leader), Andy Childs, Vince Desimone, Janet Friend, Le Hancey, Lance Harris, Neil Hinckley, Alexis Kelner, Holly Leed, Chuck Reichmuth, Tom Silberstorf, Doug Smith, and Ken Workman.

SERENDIPITY...DOWN UNDER

by Hank Winawer

Breaking the routine of weekly activities in the Wasatch can yield experiences heretofore unknown for the adventuresome. So it was on October 24, 1987 when the Guru of underground exploration, Dale Green, said, "Go west young (wo)man. Go into the desert. Climb a mountain. Find a hole in the rock and descend to the inner depths."

Somewhere in the Cherry Creek Range of eastern Nevada, we found "The Mountain", climbed and scrambled to a huge hole in its face and gawked at this natural wonder; but the best was yet to come. The adventure was heightened by the remoteness of the site, by the fact that we were perched high above the desert floor and could scan hundreds of square miles of uninhabited terrain. After lunch, head lamps were filled with carbide and water and switches turned on. Cupping a lamp's reflector to allow the gas to build up, Dale drew his hand across the flint wheel. The resultant explosion produced a flame of relatively high intensity. This procedure was repeated until each carbide lamp was lit and attached onto hard hats.

Twenty yards away was the actual entrance to the cave. Stooping low, we waddled in. There stood a huge chamber, replete with a register and a sign proclaiming, "Cave first discovered in 1895." After historical information and cave etiquette were transmitted by our leader, the revered "Holy Moley", we set out to new depths. Some rooms were massive. Others were so tight we couldn't (fully) inhale.

The formations were truly magnificent, having been developed by the action of water over eons of time: Stalactites, like petrified icicles hanging overhead; Stalagmites pointed upward from the floor of the cave; intricately woven Anthodites, like a jumbled mass of miniature pick up sticks; booklike Folia; the curlicue formations of Helictite; Rimstone, like frozen rippled dunes underfoot; huge Mammary structures; and plasticized Moon Milk. Each was unique; each a wonder in itself. Visibly

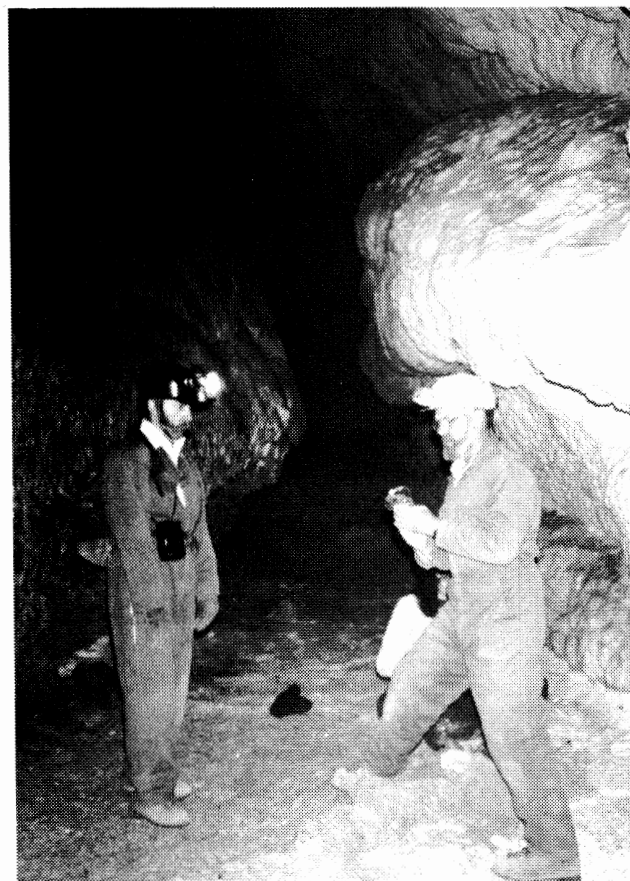


Photos by Elissa Stevens.

standing out from all these opaque structures were numerous darkened black and amber areas on the limestone. It was pointed out that the Ratite and Amberat were accumulations of rat droppings that have been deposited over tens of thousands of years. Exclaimed one caver, "Holy Sh--!", as Dale handed him a large slab.

Our most adventuresome spelunker was Vince. Wedging himself down an almost vertical passageway and having lost audio contact with him, we decided he'd probably be found centuries hence; some future explorer winning a Nobel Prize for discovering Desimonite.

After our astonishment was satiated and our carbide lamps were starting to dim, we crawled our way up the sometimes steep, sometimes wet and slippery, sometimes powdery dry cave floor to daylight. Elissa Stevens, Jason Kato, Vince Desimone, Karen Kester, Linda Wilcox, Monty Young, Dale Green and Hank Winawer recapped the unique experience over dinner at Nevada Crossing in Wendover.



FOOTNOTE: Expand your horizons. Explore new heights and depths. Climb a mountain. Run a river. Ski the backcountry. Descend the inner sanctum of the earth. The Wasatch

Mountain Club provides an opportunity to participate in this potpourri of activities. Support it! Enjoy it!



A SILENT MOMENT

by Harold Goeckeritz

A cold breeze was blowing in my face as I walked along the Desolation Trail. My eyes were wandering along the ridge and valley floor to take in the beautiful picture that nature painted. The mountain to the south showed the first signs of winter. The wind made the round golden leaves of the Aspen trees dance in the sunlight. Peaceful were the surroundings and the sound of nature was beginning to blow a new breath of life into my body. Every step I made seemed to reunite my body and mind, to be one again. I started to recognize things which you normally don't see, like the singing of the birds or the beauty of the flowers, like a raindrop on a leaf breaking the rays of the sun and shining like a crystal.

My mind began to open up to find a renewal of the things that are beautiful that so often are far removed from our lives. I found myself a rock to sit on for lunch; how good it felt to enjoy this solitude, being away from the city noise and the rush of our daily schedule. I soaked in the warm rays of the sun. Soon this place will be covered with snow again and will change. In my mind I could see snowflakes dancing to the ground, covering it with a coat of a different beauty. Everything will rest to renew its life for a new awakening in the spring, to come forth with its beauty once again. In the far distance I watched an eagle glide motionless over the valley floor using the wind current to reach altitude. How easy did it look for such a large bird; after a while he finally disappeared over the mountain ridge.

The sun was moving farther west, reminding me that it was time to leave again. Time can fly in a hurry. Sometimes it would be nice if we could stop the clock, but our lives go on and our time clock ticks away to face each new challenge. Nothing can stop it, only we are reminded of what is worthwhile in our life.

CLASSIFIED ADS

AD POLICY

Members may place classified ads for used sports equipment free of charge. Other classified ads require a \$5.00 donation to the WMC for up to 20 words with \$.20 per word over 20. Words of 2 letters or less will not count as a word.

Send your ad (with a check enclosed if it is not a used sports equipment ad) before the 13th of the month to Sue DeVall, 11730 South 700 West, Sandy UT 84070 or call Sue at 572-3294 for information.

The Rambler cannot accept any ad that is inconsistent with the purposes of the WMC, or that offends the sensibilities of club members.

EQUIPMENT WANTED

S'PLORE, a nonprofit organization offering outdoor trips to disabled individuals is looking for cross-country ski equipment to be donated. All sizes are needed - especially childrens. Call Trish 363-7130.

SERVICES

OUTDOOR EQUIPMENT REPAIRS. Reasonably priced. Fast Service. Specialized designs & retrofits. Call Sue DeVall at 572-3294 or at REI 486-2100.

TRAVEL

MEXICAN CARIBBEAN AT AKUMAL. Feb 6-16. Scuba, snorkle. Mayan ruins. \$981 including airfare, lodging, vehicles. Adventure travel with Shirley Smith. 532-4402 (W) 649-7430 (H).

PERU. June 14-30. Jungle, trekking to Machu Picchu, Inti Raymi festival, Cuzco. Estimated price \$995 plus air. Adventure travel with Shirley Smith. 532-4402 (W) 649-7430 (H).

USED EQUIPMENT

MENS 10 SPEED BIKES. 18" and 22" frames, reconditioned. Asking \$40 and \$100 or offer. Linda 262-3063 (H) or 255-0932 (W).

MENS ROCK CLIMBING HELMET. Solid white shell, foam lining, adjustable sizing. Tom Walsh 969-5842.

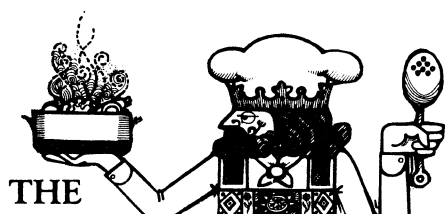
MENS BELL BIKE HELMET. Large size, never been crashed. Tom Walsh. 969-5842.

SKIS. Olin Mark IV, 165 cm. \$25. Head STD, 170 cm. \$10. Linda 262-3063 (H) or 255-0932 (W).

1 pair Alfa CROSS-COUNTRY SKI BOOTS. Mens size 8/9, used 1 season. \$75. Linda Hatcher 484-3851 evenings.

TELEMARK: Asolo Extreme 8 1/2 boots \$130, Rosi Descent 210 cm skis & 3 pins \$90, Colltex 50mm skins \$40, all pristine. Phoenix Wilderness 210 cm skis & 3 pins \$40 rough. Call John 363-5079 (H), 251-6574 (W).

Mens back country XC SKIS, Fjertroll 210cm exc. cond.
2 pr Bona XC WOOD SKIS, 210 cm never mounted exc.
Size 12 Mens Alpha XC BOOTS, never worn.
20" Bianchi touring bike, exc. cond.
Call Joan 521-2398 eve, 328-2066 days



THE GRUBBY GOURMET

by Roseanne Woodward

Grubby is on a whirlwind world trip in order to find new recipes for you. So while she's gone, pack your packs with these:

DATE APRICOT BARS

- 1 cup butter
- 1 1/2 cups packed light brown sugar
- 1 cup quick cooking oats
- 1 cup whole wheat flour
- 1 cup white flour
- 1/2 cup wheat germ
- 4 teaspoons grated orange peel
- 4 eggs
- 1 1/2 cups whole almonds
- 1 cup semisweet chocolate chips
- 1/2 cup chopped dates
- 1/2 cup chopped dried apricots
- 1/2 cup coconut

Cream butter in 1 cup of brown sugar. Stir in oats, flours, wheat germ and orange peel. Spread evenly in 9 x 13 inch baking pan. Combine remaining ingredients, pour over butter mixture, bake until brown, 30-35 minutes.

ARCHDRUID LECTURE - JAN 15

The Third Annual Archdruid Lecture featuring noted author and environmentalist **Edward Abbey** will be sponsored by the Utah Chapter of the Sierra Club. The lecture will be at 7:30 pm on January 15, 1988 at the Bradford Bowman Auditorium in East High School located at 840 South 1300 East, Salt Lake City. Tickets are \$5.00 in advance and \$6.00 at the door. This is a benefit for the Utah Chapter of the Sierra Club.

SKY CALENDAR FOR DECEMBER

by Ben Everitt

MOON

Full Moon	Dec. 5
Last Quarter	Dec. 13
New Moon	Dec. 20
First Quarter	Dec. 27

PLANETS: MARS in the morning, JUPITER high at night, and VENUS, bright lady, in the evening. That's the program for December. SATURN is out of sight behind the sun.

The winter solstice falls on December 22. This is also the date of lunar perigee (when the moon is closest to the earth), and only two days after new moon. It is also fairly close to perihelion (January 3, when the earth is closest to the sun.) I hope we don't strain old Geo enough to bust something loose. Just in case you have to bed down on the Wasatch Fault, make sure your coffee and grub are on the same side as you are!

ANSWER TO NOVEMBER CROSSWORD PUZZLE

S	O	L	I	T	U	D	E		C	A	N	U	T	E
A	F	A	R			O	L	J	E	T	O		A	R
N		C	O	M	A		K	I	T	E			R	A
D	P		N	O	N	C	O	M				D	S	T
Y	A	K		A	T					A	B	I	A	N
	C	A	R	B	O	N		D	I	O	X	I	D	E
S	K	Y	E			N	E	V	E		U	I	N	T
A		A	V			E	M		L		L	E	T	R
H	I	K	E			O	U	T		D				S
A			L	E	R		R	A	C	E		G	I	
R		K	A		I	L				R		E	G	
A	L	A	T		D	E	C	A	L		L	O	C	H
		T	I	O	G	A		L	I	G	E	R		T
C	O	Y	O	T	E			E	T	A		H	G	E
			N	B				G	A	R	F	I	E	L

Rambler Crossword # 2 (Rating MOD)

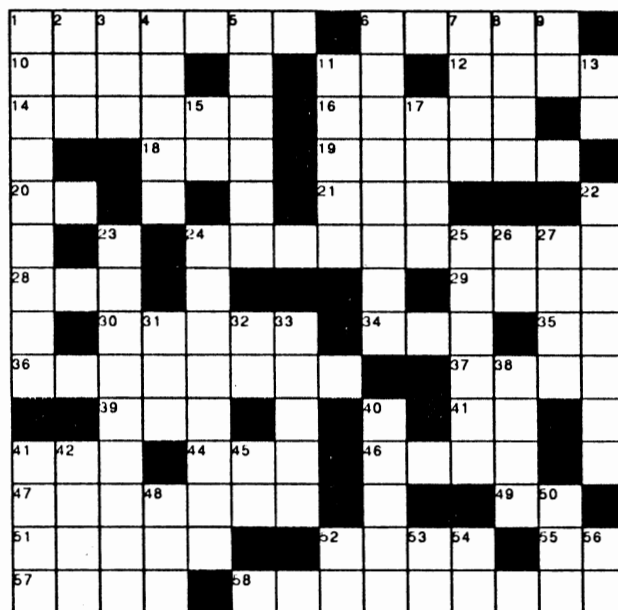
Across

1. Utah mountain range
6. Excessively virile
10. Gemstone
11. Thus
12. Utah County town, named for a prophet
14. "Never a borrower nor a be"
16. English for line, or French for tail
18. Finish
19. Incapable
20. Marks the spot
21. All terrain roughneck (abbr?)
24. Dam thing will inundate 23,24
28. Retirement savings scheme
29. Ill gotten gains
30. Interior
34. Lake Powell is one (abbr)
35. Baseball abbreviation
36. From a variety of sources
37. See 53
39. Drunkard
41. Spanish affirmative
42. Dozer
44. Irritate
46. Hoffman did this, so did Schroeder
47. Utah is said to have one, but its largely used to pump out the lake rather than into the schools
49. Compass direction
51. Pine
52. Home of the Osmonds
55. "I think ,therefore I"
57. Paradise
58. Formerly a tributary of the Colorado, now enters Lake Powell National Sewage Lagoon.

Down

1. Mountain in the Wasatch near Brighton
2. Primate
3. Juan or Raphael
4. Tree
5. Of the heart (prefix)
- 6,7. Famous group associated with 1 across
8. Achilles had one, to his great misfortune
9. Exclamation
11. Small group
13. Gem state
15. 14th letter
17. Deserve
22. Would you believe that one is planned for Hall's Crossing?
- 23,24. Turnoff for Kamas, soon to be flooded
25. Pass

26. Behold!
27. Superman's companion
31. New (prefix)
32. And, he should call home
33. Like the futures market, or installing pumps on the lake
38. This can't happen in the Alpine School District because we won't talk about it
40. Flower girl?
42. Edible mushroom
43. Type of rain that worries the Canadians more than the White House
45. BYU coed's dream (abbr)
48. French negative
50. Consume
52. Officer commanding (abbr)
- 53,37. Texas town, or a pipeline in the Four Corners area
54. Mrs Kettle
56. Not you



BY APTERYX

WASATCH MOUNTAIN CLUB

APPLICATION FOR NEW MEMBERS/REINSTATEMENT FOR PREVIOUS MEMBERS RAMBLER SUBSCRIPTION QUALIFICATION FORM

Please read carefully and fill out completely. Your signature is required.

APPLICANT'S NAMES: _____

ADDRESS: _____ CITY _____ ST _____ ZIP _____

HOME PHONE _____ DAY PHONE _____ BIRTH DATE _____

I hereby apply for ☐ NEW MEMBERSHIP ☐ SINGLE membership in the WMC
☐ REINSTATEMENT ☐ COUPLE

I ☐ DO wish to receive the *Rambler* (the WMC publication). Subscription price
☐ DO NOT is not deductible from the dues. I am 18 years of age or older.

Enclosed is \$ _____ for one year's (Mar 1 to Feb 28) dues and application fee.
*** Make checks payable to Wasatch Mountain Club (CHECKS ONLY) ***

Remit: \$30.00 for single membership (\$25.00 dues and \$5.00 application fee)
\$40.00 for couple membership (\$35.00 dues and \$5.00 application fee)
(\$12.00 for the *Rambler* subscription is included in the above rates)

YOU MUST COMPLETE THE FOLLOWING FOR MEMBERSHIP CONSIDERATION
THE ACTIVITY DATES MUST HAVE BEEN WITHIN ONE YEAR OF THIS APPLICATION

qualifying activity	date	signature of recommending leader
1. _____	_____	_____
2. _____	_____	_____

I agree to abide by all the rules and regulations of the WMC. I am willing to serve the WMC in the following areas: (please check)

☐ Service Project ☐ Lodge work ☐ Conservation ☐ Rambler ☐ Thurs Night Hikes
☐ Hike Leader ☐ Boat Leader ☐ Ski Leader ☐ Social Assist

APPLICANT'S SIGNATURE: _____

MAIL APPLICATION AND CHECK TO: MEMBERSHIP DIRECTOR
WASATCH MOUNTAIN CLUB
168 WEST 500 NORTH
SALT LAKE CITY, UTAH, 84103

LEAVE BLANK

Receipt #: _____ Date Received: _____ Amount Recv'd: _____
(or check #) (less application fee)
Board Approval Date _____ (Rev 3/87 Pub 12/87)

IN CASE OF EMERGENCY PLEASE NOTIFY
THE SALT LAKE COUNTY
SHERIFF'S OFFICE AT:

535-7055

OR THE APPROPRIATE EMERGENCY
AGENCY IN YOUR LOCATION.

AVALANCHE NUMBERS

Salt Lake 364-1581
Ogden 621-2362
Logan 752-4146
Provo 374-9770

WASATCH MOUNTAIN CLUB
168 WEST 500 NORTH
SALT LAKE CITY, UTAH 84103

SECOND CLASS
POSTAGE PAID
SALT LAKE CITY, UT
NO. 053410