

WASATCH MOUNTAIN CLUB

# *The Rambler*

JUNE

VOL. 65 NO. 6 JUNE 1988

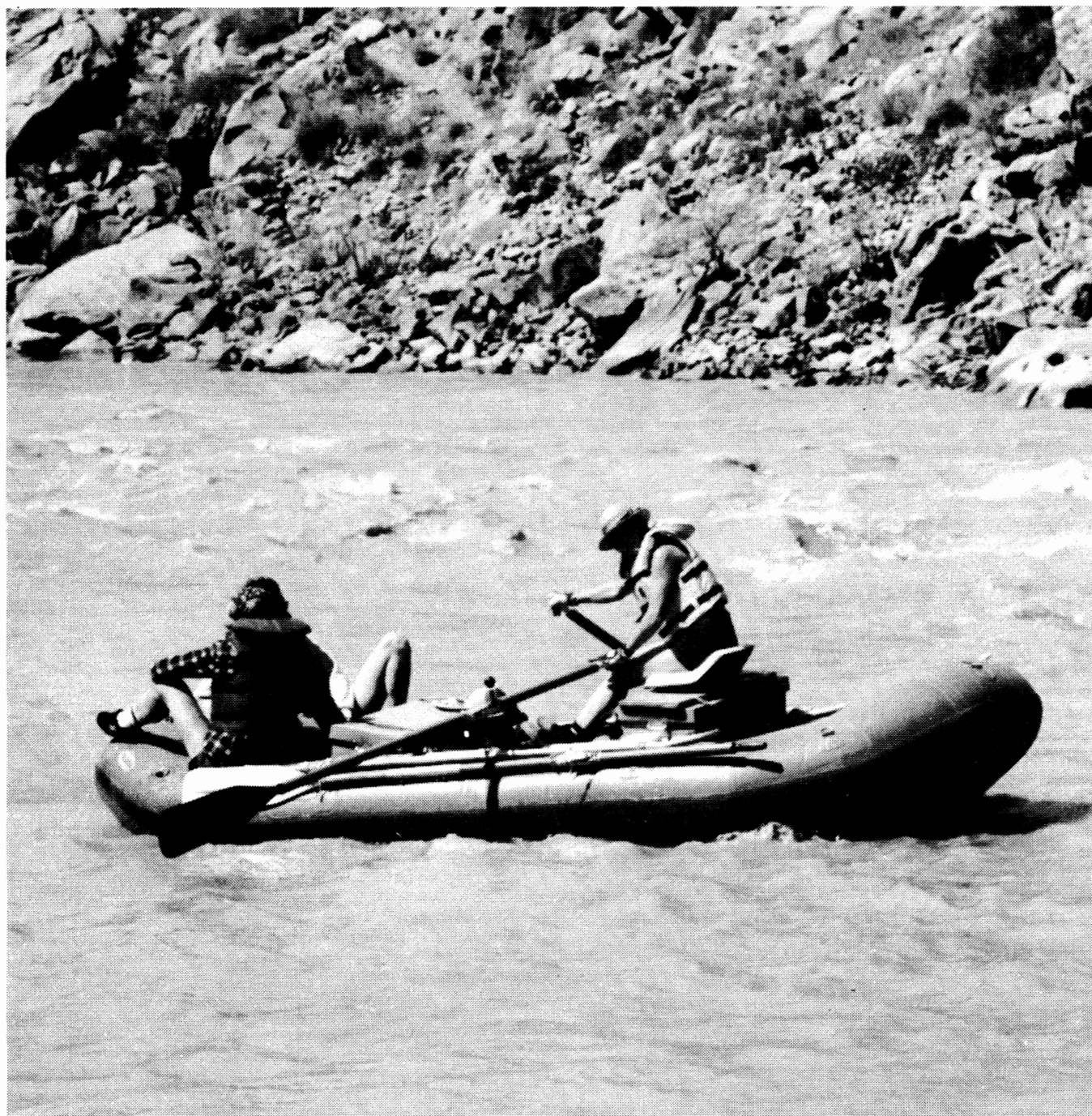


Photo by Earl Cook

# The Rambler

David Vickery, Managing Editor

Production:  
Pat Beard

Advertising:  
Jeff Pace

Classified Ads:  
Sue deVall

Staff Writers:  
Apteryx  
Ben Everitt  
Roseann Woodward

Mailing:  
Niel Hinckley  
Elliot Mott

THE RAMBLER (USPS 053-410) is published monthly by the WASATCH MOUNTAIN CLUB, Inc., 888 South 200 East, Suite 111, Salt Lake City, UT 84111. Telephone 363-7150. Subscription rates of \$12.00 per year are paid for by membership dues only. Second-class Postage Paid at Salt Lake City, UT.

POSTMASTER: Send address changes to THE RAMBLER Membership Director, 888 South 200 East, Suite 111, Salt Lake City UT, 84111. CHANGE OF ADDRESS: This publication is not forwarded by the Post Office. Change of address should be submitted in writing to the Membership Director, 888 South 200 East, Suite 111, Salt Lake City, Utah, 84111. All correspondence regarding the mailing of THE RAMBLER should be directed to the Membership Director at that address. Allow 45 days for address changes.

Submissions to THE RAMBLER must be received by 6:00 pm on the 15th of the month preceding the publication. Mail or deliver to THE RAMBLER office or to the Editor. Include your name and phone number on all submissions.

The right is reserved to edit all contributions and advertisements and to reject those that may harm the sensibilities of WMC members or defame the WMC.

Copyright 1988, Wasatch Mountain Club

## NOTE! NEW CLUB ADDRESS:

888 SOUTH 200 EAST SUITE 111  
SALT LAKE CITY UTAH 84111



## WASATCH MOUNTAIN CLUB

THE RAMBLER, the official publication of the Wasatch Mountain Club is published monthly by and for its members. Persons wishing to become members and receive THE RAMBLER for two months upon written request to the Membership Director, 888 South 200 East, Suite 111, Salt Lake City, UT, 84111 and payment of \$3.00. Checks are to be made payable to the Wasatch Mountain Club. There is a \$10.00 charge for returned checks.

Membership applicants must participate in at least two Club outdoor or service activities, verified by the signatures of approval from the activity leaders. Yearly dues are \$25.00 single, \$35.00 couple. A \$5.00 initiation/reinstatement fee is charged.

### 1988-1989 GOVERNING BOARD

President	John Veranth	278-5826
Vice President	Earl Cook	531-6339
Secretary	Elissa Stevens	272-7215
Treasurer	Tom Silberstorf	467-5734
Membership	Earl Cook	531-6339
Boating	Jeff Barrell	943-2836
Conservation	Mary Fleming	359-5645
	Chris Biltoft	359-5645
Entertainment	Linda Hatcher	484-3851
	Donna Kramer	272-0418
	Roseann Woodward	486-6184
Hiking	Tom Walsh	969-5842
Lodge	Alexis Kelner	359-5387
	Vince Desimone	1-649-6805
Mountaineering	John Kennington	942-0693
Publications	David Vickery	583-7064
Ski Touring	Anna Cordes	467-9430
Information	Linda Wilcox	363-6444
COORDINATORS		
Bicycling	Guy Benson	359-6028
	Bruce Schatmeier	466-3971
Canoeing	Kathy Klein	466-8387
	Randy Klein	466-8387
Kayaking	Mike Dege	571-7684
Sailing	Vince Desimone	1-649-6805
Rafting	Carl Cook	485-4586
Volleyball	Jim Elder	943-3321

### TRUSTEES

Karin Caldwell	942-6065
Marilyn Earle	649-1339
Dale Green	277-6417
Milt Hollander	277-1416
O'Dell Peterson	Trustee Emeritus
Dale Green	Historian

## WMC PURPOSE

(Article II of the WMC Constitution)

The purpose shall be to promote the physical and spiritual well being of its members and others by outdoor activities; to unite the energy, interests and knowledge of students, explorers and lovers of the mountains, deserts and rivers of Utah; to collect and disseminate information regarding the Rocky Mountains in behalf of science, literature and art; to explore and picture the scenic wonders of this and surrounding states; to foster awareness of scenic beauties; and to encourage preservation of our natural areas including their plant, animal and bird life.

# The Rambler

## JUNE

Board Report	3
Hiking & Biking Info	4
Events at a Glance	6
Activities	7
Information Director	20
Entertainment Director	21
Mountaineering Director	22
Hiking Director	22
Conservation Notes	23
Trip Talk	24
Sierra Club Outings	28
Classified Ads	28
Sky Calendar	29
Crossword Puzzle	30



"Where Team Flowerchildren Hangs Out"

### Cycles 'a la Dirt

**Fat Chance • Mountain Goat  
Ibis • Marin • Bianchi**

### Cycles for Pavement

**Eisentraut Framesets • Bianchi**

### Repairs

"If we're not fixing one, we're probably  
out crashing our own"

### Clothing and Footwear:

**Vigorelli, Bellwether, Nike  
Specialized, Oakley**

**Parts Accessories Advice**

**702 Third Avenue SLC, UT 84103**  
A Two Minute Drive from the Great Basin Financial District  
**533-8671**

## WASATCH MOUNTAIN CLUB BOARD REPORT

May 4

The board passed a resolution stating that profits from the publication of the club's new guidebook *Hiking the Wasatch* should be spent for the following purposes: A) To publish new guidebooks and new editions of this guidebook. B) To promote conservation issues. C) On capital improvements to the lodge.

*Hiking the Wasatch* should be at your local bookstore by now.

The boating director is developing a new release form for boating activities.

The lodge passed the fire inspection. The lodge directors intend to finish up projects started last year and begin developing a new source of drinking water for the lodge.

The hiking director reported on plans the County is making to improve access to the Bells Canyon and Mt Olympus Trails.

Next board meeting: June 1.

## WELCOME

The Rambler and W.M.C. want to welcome the following new club members:

Penny Larson

Peggy Reiner

Effie Wright

Danny Gavere

Judy Brown

Marie Gunderson

Wes & Jean Keller

John & Julie Dean

Henk & Nelleke Meuzelaar

Lee Ann Floyd

Guy Marie Besson

Herbert Bailey

Nancy Morrow

Allan Duvall

Jim & Cheryl Brown

Ken & Liz Speirs

We hope you will enjoy our club activities and we look forward to meeting you. Please feel free to volunteer to help where you can.

## THURSDAY EVENING HIKE INFORMATION

These hikes are for members only except prospective members may use them as the second and final qualifying activity for membership provided their dues check and application are submitted to the leader prior to the hike. Meet at 6:30 pm; all hikes leave the meeting place at 6:45 pm PROMPT! All participants must sign the liability release form. Hikes are never cancelled for any reason including bad weather, so wear appropriate clothing. Boots will be required if the trail is in mud or snow. No dogs. Hikes in Mill Creek Canyon meet in Olympus Hills parking lot at 3900 Wasatch Blvd. just south of the defunct Bagel Nosh. Hikes in Big Cottonwood meet at the "Storm Mountain Quartzites" geology sign, 2.9 miles up the canyon (r.h. side) from the stop light. Hike leader: Dale Green.

### A WORD ABOUT WMC HIKES

The hike rating indicates the difficulty of the hike. Hikes rated under 5 are easy, 5-8 are intermediate, above 8 are difficult. If the rating says "about" (for example "about 4.0"), it means the rating is an approximate guide. A hike may be more difficult than the rating would suggest. Watch for the terms "exposure", "rock scrambling", "bush whacking", and "steep". These terms, and the rating system, are fully described in the April 1986 Rambler.

If you are just getting into hiking, you may find that a hike's description does not tell you everything you want to know. If so, don't feel shy about calling the leader ahead of time to be sure your abilities are a match for the hike, and to know if it is the kind of experience you are looking for. Please come to the hike with proper equipment: adequate clothing, footwear, food, water, and any special equipment required for that hike. You are expected to stay with the group once you have signed the release form. Do not jackrabbit ahead of the group, or pretend that you are "Tigger".

### A WORD ABOUT WMC BICYCLE RIDES

Rides are rated Not Too Difficult (NTD), Moderate (MOD), or Most Difficult (MSD). These ratings are a subjective evaluation taking into consideration mileage and difficulty (hills). NTD rides will generally be less than 30 miles. MOD rides will be 30 to 50 hilly or up to 60 flat miles. MDS rides will be over 50 hilly or 60 flat miles. On all but newcomer rides, it is required that riders be equipped to be self-sufficient, i.e., bring water, food, tire repair tools, extra tubes, repair knowledge, and money. Inexperienced riders or riders unsure of their ability on a bicycle should consider protective gear. Sunscreen is also suggested. Helmets may be required on certain rides.

# KIRKHAM'S.

## Your Only Store When You're Heading For the Great Outdoors.



Here's a sampling of the  
Spring and Summer items  
that we have available for you:

### OUTDOOR CLOTHING

- The North Face
- Woolrich
- Patagonia
- Royal Robbins
- Columbia
- Jansport
- Sportif
- Sierra West

### FOOTWEAR

- Asolo
- Vasque
- Merrell
- Fabiano
- Hi-Tec
- Danner
- D.M.C.
- Sole Survivor
- Koflach
- Teva
- Birkenstock

### SUNGLASSES

- Ski Optics
- Vaurnet
- Style Eyes
- Jones

### PACKS

- Dana Design
- Kelty
- Lowe
- North Face
- Camp Trails
- Jansport

### TENTS

- Springbar®
- Eureka
- North Face/Windy Pass

### SLEEPING BAGS

- Slumberjack
- Everest Elite
- Marmot
- North Face

### Kirkham's Outdoor Products

Manufacturers of quality products for the great outdoors.

• Daypacks • Fanny Packs • Tents • Gaitors • Luggage • Overmitts  
All made right at our factory/store, so we're able to pass along  
factory direct pricing to you.



**Kirkham's®**  
outdoor products



3125 South State • 486-4161 • Open Mon.-Thurs. 9:30-7 pm, Fri. to 9, Sat. to 6

# EVENTS AT A GLANCE

(See the Chronological Listing for Details)

June  
10 Boulder Mountain  
17 Zion or Teton NP

June  
1 Wednesday Nt Ride  
4 Willard Bay  
5 Farmington  
6 Emigration Canyon  
7 Meeting  
8 Mill Creek Canyon  
11 Purple Turtle  
12 Crompton's

June  
7 Alpine Work Party  
11 Alpine Canyon  
13 Middle Fork of Salmon

June  
2 Mill Creek  
4 Flower Hike  
4 Heritage Mt  
4 Lake Blanche  
4 Wildcat Ridge  
5 Reynolds Peak  
5 Newcomers Hike  
5 Mt Raymond  
9 Big Cottonwood  
11 Beatout  
11 Mt Raymond  
11 Family Hike  
11 White Pine Canyon  
11 Mill B North  
12 Days Fork  
12 Lake Mary  
12 Red Pine Lake  
16 Mill Creek

June  
2 Storm Mountain  
4 Mt Olympus  
9 Storm Mountain  
11 City of Rocks

June  
18 Lodge Dinner & Dance  
19 Sunday Social

## BACKPACKING

2 Uintas  
2 LaSal Mountains  
4 Wind Rivers

## BICYCLING

13 City Creek  
14 Sea to Sea Meeting  
15 Mt Bike Ride  
18 Fairfield  
20 Parleys Canyon  
22 Mill Creek Canyon  
26 Alpine Loop  
27 City Creek

## BOATING

25 Alpine Canyon  
28 Payette Work Party

## HIKING

18 Lone Peak  
18 Kessler Peak  
18 Desolation Lake  
18 Dog Lake  
18 Mt Aire  
19 Box Elder Peak  
19 Mineral Fork  
19 Tuscarora/Wolverine  
19 Greens Basin  
19 Dog Hike  
23 Big Cottonwood  
25 Days Fork  
25 Twin Lakes Pass  
25 Pfeifferhorn  
25 Neffs Canyon  
25 Elbow Fork  
26 Gobblers Knob  
26 Maybird Lakes  
26 Timpanogos  
26 Lake Catherine  
26 North Willow Lake  
30 Mill Creek

## MOUNTAINEERING

16 Storm Mountain  
18 Thunderbolt Ridge  
23 Storm Mountain  
30 Storm Mountain

## SOCIALS

25 Saturday Social

## VOLLEYBALL

(Tuesday Evenings. Call Jim for details, 943-3321)

July  
9 Uintas  
23 Wind Rivers

July  
4 Emigration Canyon  
22 Yellowstone

July  
1 Payette  
8 Rogue River  
9 Safety Course  
22 Westwater

July  
2 Broads Fork  
2 Mt Evergreen  
2 Mt Raymond  
2 Kessler Peak  
3 Reynolds Peak  
3 Catherine Pass  
3 Family Hike  
3 Greens Basin  
4 Flagstaff Peak  
4 Thayne's Peak  
7 Big Cottonwood  
9 Superior Peak  
9 Little Willow Canyon  
9 Little Water Peak  
9 Alexander Basin  
9 White Pine  
10 Lake Blanche  
10 Sundial  
10 Honeycomb Cliffs  
10 Salt Lake Overlook  
14 Mill Creek  
16 Provo Peak

July  
1 Lone Peak

July  
9 Coffeehouse



# CLUB ACTIVITIES

Only activities approved by the appropriate WMC Director can be listed in the Club Activities section of the *Rambler*. Send your proposed activity, for approval, to the hiking, rafting, skiing, etc. director for inclusion in their activity schedule. Those activities sent directly to the *Rambler*, without approval, will not be published.

- Wed. June 1      **WEDNESDAY NIGHT MOUNTAIN BIKE RIDE.** (NTD) Destination to be announced. Meet leader Guy Benson near, but NOT in the Hogle Zoo parking lot at 6:30 pm. For more information, call Guy at 359-6028.
- Thu. June 2      **THURSDAY EVENING HIKE.** Mill Creek Canyon. See "Thursday Evening Hike Information" on page 4.
- EVENING CLIMBING AT STORM MOUNTAIN.** In the late afternoon, drive 3.3 miles up Big Cottonwood Canyon to Storm Mountain Picnic Ground. The climbers usually congregate around the large boulder in the lower parking lot. Grab a climb and later squeeze a burger.
- Sat. June 4      **NORTHWEST SLABS OF OLYMPUS CLIMB.** This is a delightful experience climb for new mountaineers and a certified classic for the veterans. Approach the NW side of Mt Olympus in a gully (bring ice axe) to the slabs. A dozen or so easy (5.4) pitches will bring us to the summit ridge. Be prepared for a long, but rewarding day. Meet at 7:30 am at the defunct Bagel Nosh - 3900 S. Wasatch Blvd. REGISTER in advance with John Kennington (942-0693).
- Sat. June 4      **FLOWER HIKE.** The destination will be announced by the leader. Rating will be moderate to easy. Ellie Ienatsch will lead the group into terrain where flora abounds. Read the June issue of the *Rambler* for more information.
- HERITAGE MOUNTAIN HIKE.** This is the mountain with the "Y" east of the BYU campus. This is the first of the yet to be developed BYU series of hikes. Just the thing for BYU sports fans, or people who might be interested in a possible sighting of peregrine falcons. Call Howard Wilkerson at 277-1510 for details about the meeting time and place. Rating is about 4.5.
- LAKE BLANCHE AGAIN HIKE.** This ever popular hike will be led by Herta Denner (272-6906). Meet at the mouth of Big Cottonwood Canyon at 8:00 am. Herta will enforce a moderate pace. Rating is 5.7. Anyone trying to force the pace will be required to sprint around the perimeter of the lake carrying four daypacks of the leader's choice.
- WILDCAT RIDGE BACKWARDS HIKE.** Our most difficult regularly scheduled hike will go up Mt Olympus, along Wildcat Ridge to Mt Raymond. Plan for a long, hard, high-altitude day, on a hike rated 15.4 on the WMC scale. Call the leader John Veranth at 278-5826 to register and plan this seldom done epic.
- June 4-5      **WILLARD BAY OVERNIGHT BIKE RIDE.** This is a ride sponsored by the  
Sat.-Sun.      Utah Department of Natural Resources and the Bonneville Bicycle Touring Club. The ride is 65 flat miles on both days. The entry fee includes supper

Saturday night and breakfast on Sunday morning plus a T-shirt. Contact Jeff Levinson 487-0540 for details.

Sun. June 5

**REYNOLDS PEAK FROM BIG WATER TRAIL HIKE.** This peak is 9422 feet, with a WMC rating of 4.4. Call Sanjay Prakash at 485-8195 for the necessary information about where and when to meet.

**NEWCOMERS HIKE.** An easy paced hike to the Salt Lake Overlook via Lake Desolation Trail. Altitude gain is 1500 feet with a maximum elevation of 7240 feet. Rating is an easy 3.5. Bob Johnston will meet the interested hikers at the old Bagel Nosh in the Olympus Hills Shopping Center at 9:00 am. He can be reached at 942-8692.

Sun. June 5

**MT RAYMOND HIKE.** Rating 9.0. Help Hank Winawer taper off from his duties as WMC President by joining him on this favorite hike, via Hidden Falls. Call Hank at 277-1997 for more information. The meeting time and place will be 9:00 am at the mouth of Big Cottonwood Canyon.

**FARMINGTON BIKE RIDE.** (MOD) Meet leaders Bruce and Heidi Schatmeier at 9:00 am at the Utah Department of Agriculture building, 350 North Redwood Road. This is a 36 mile loop to Farmington for lunch and return. Bring lunch or buy it there. For more information call Bruce or Heidi at 466-9378.

Mon. June 6

**MONDAY NIGHT BIKE RIDE.** (NTD) Emigration Canyon. Celebrate the Invasion of Normandy by riding up Emigration Canyon with your leader Marty Mason. For more information, call Marty at 582-7619. Meet Marty near (but DO NOT park in) the Hogle Zoo parking lot. Helmets required. Dinner at a nearby valley location will follow.

Tue. June 7

**ALPINE CANYON BOATING WORK PARTY.** This meeting will coordinate the upcoming Alpine Canyon trip. Meet at the Oakwood storage center, 5585 S 320 W, #33 at 6:00.

**BICYCLE ORGANIZATIONAL MEETING.** The cycling season is continuing and it's time to plan more road and mountain bike rides. Please bring ideas for your favorite rides. Meet at Guy Benson's home at 7:30 pm. Guy's address is 867 South 900 East (North side basement apt) Phone 359-6028.

**VOLLEYBALL.** Summer volleyball, outdoors. Call Jim for details, 943-3321.

Wed. June 8

**WEDNESDAY NIGHT BIKE RIDE.** (NTD) Mill Creek Canyon. Meet leader Ceil Meade at 6:30 pm at the ex-Bagel Nosh parking lot in the Olympus Hills Mall. Helmets are required. For more information call Ceil at 572-2035.

Thu. June 9

**THURSDAY EVENING HIKE.** Big Cottonwood Canyon. See "Thursday Evening Hike Information" on page 4.

**EVENING CLIMBING AT STORM MOUNTAIN.** See June 2 for details.

June 10-12  
Fri.-Sun.

**BOULDER MOUNTAIN CAR CAMP.** Family car camp in the Boulder Mountain, Dixie National Forest area from Friday night through Sunday. Destination: Singletree Campground on the Grover-Boulder road (Route 12).



Saturday and Sunday will feature day hikes and spectacular views of Capitol Reef. Limited space available, please call to register with leader Ken Kraus 363-4186 evenings between 7 & 10 pm.

Sat. June 11

**THE BEATOUT HIKE.** (Red Pine Canyon to Pfeifferhorn to Bells Canyon.) This hike has been described as "the annual exercise in masochism." Instead think of it as a long and strenuous hike that has everything - snow fields, alpine lakes, several peaks, a ridge run, and the ruggedly beautiful Bells Canyon. You must bring an ice ax and the knowledge of how to use it. Call Larry Larkin at 521-0416 to register in advance.

**MT RAYMOND VIA BOWMAN FORK HIKE.** If you missed last week's hike, here is a second chance. Rating is 9.0. The descent will be via Alexander Basin. Meet Bob Weatherbee at 8:00 am near the closed Bagel Nosh in the Olympus Hills Shopping Center. Call 278-8838 for details. Rated 9.0.

**FAMILY HIKE TO WILLOW LAKE.** The easiest rating of 1.5 will be suitable for all but the smallest hikers. Paula Swaner will lead. Call her at 278-3124 (or 277-7123 during the week.) Meet at the east end of the parking lot at the mouth of Big Cottonwood Canyon at 9:00 am and bring a snack.

**WHITE PINE CANYON HIKE.** For a good chance to do some first class glissading, join Ken Kelley at 9:00 am at the geology sign in Big Cottonwood Canyon. This is rated fun. P.S. the numerical rating is 6.3. Ken can be reached at 942-7730.

**MILL B NORTH FORK TO THE OVERLOOK HIKE.** For an easygoing activity, join Margaret McEwan for a relaxed hike overlooking the city. Call Margaret at 486-5012 during the workday, or 265-9037 at night to plan the time and meeting place. Rating: 1.8.

**PURPLE TURTLE LOOP BIKE RIDE.** (MOD) This is a 50 mile bicycle ride over mostly back roads with a couple of medium climbs. The route is through Lehi, Pleasant Grove, and Alpine with a stop at the Purple Turtle Drive-In for lunch. Meet at Draper Park at 12500 S. 1300 E. in Draper at 9:00 am. Leader is John Peterson, phone 277-8817.

June 11-12  
Sat.-Sun.

**ALPINE CANYON BOATING TRIP** (class III). Alpine won't run long this year, so go early and go often. To reserve your place, send your \$25 deposit to Carl Cook, 2189 Atkin Ave., SLC, UT 84109, or call Carl at 485-4586 for details. Families welcome.

June 11-12

**LASAL MOUNTAINS BACKPACK.** Rescheduled for July 2-4.

June 11-12  
Sat.-Sun.

**CITY OF ROCKS CLIMBER CAR CAMP.** There are boucoup routes to challenge you at this most delightful southern Idaho recreation area. Call John Kennington (942-0693) for details.

Sun. June 12

**DAYS FORK TO THE MINE HIKE.** Trudy Healy has obligated herself to an easy paced hike. Meet her at the Geology sign in Big Cottonwood Canyon at 9:00 am. This jaunt is rated a pleasant 4.6. Call Trudy at 943-2290.

- Sun. June 12      **LAKE MARY HIKE.** The trail ought to be clear, but there should be enough snow remaining to make the scenery very picturesque. Holly Molberg will guide interested parties to the lake. Rating is an easy 1.7. Call her at 277-8365 for up-to-the-minute details. Meet in the parking lot in Big Cottonwood Canyon at 10:00 am.
- RED PINE LAKE HIKE. Rating 5.3. Go for a double header; follow up yesterday's hike to White Pine with a Red Pine hike today. This is a great opportunity for a comparative evaluation of the merits of the two parallel canyons. Call Lyn Nall at 467-4043 to plan the trip. Meet at 9:00 am at the mouth of Big Cottonwood Canyon.
- CROMPTON'S BREAKFAST BIKE RIDE. (NTD) Meet leader Guy Benson at Parley's Way KMART parking lot at 9:00 am. This will be a rambling ride up the back side of Little Mountain - approximately 20 miles. Then a quick dash down Emigration Canyon to Crompton's for breakfast. Call Guy for more information at 359-6028.
- June 13-19      **MIDDLE FORK of the SALMON ADVANCED BOATING TRIP.** Send \$50  
Mon.-Sun.      deposit and experience to Craig Homer, 3364 Sunnybrook Dr., West Valley City, UT, 84119. Call Craig at 968-1195 for details or to volunteer.
- Mon. June 13      **MONDAY NIGHT BIKE RIDE.** (NTD) City Creek Canyon. Meet Sam Kingston at the gatehouse at the entrance to City Creek at 6:30 pm. This scenic ride ascends 7.2 miles up the canyon to the end of Rotary Park. Helmets required. Dinner afterwards at a nearby location (bring money). For more information call Sam at 355-8043.
- Tue. June 14      **SEA TO SHINING SEA BIKE RIDE MEETING.** To be held at Sam Kingston's penthouse apartment, 87 West 300 North, #306 at 7:30 pm. This meeting is to give out final details and information about the first stage of our coast to coast bicycle ride scheduled for August 5-21. Please bring the balance of the transportation cost of \$140.00 per person. Call Bob Wright, 1-649-4194 for information.
- VOLLEYBALL.** Summer volleyball, outdoors. Call Jim for details, 943-3321.
- Wed. June 15      **WEDNESDAY NIGHT MOUNTAIN BIKE RIDE.** See June 1 for details.
- Thu. June 16      **THURSDAY EVENING HIKE.** Mill Creek Canyon. See "Thursday Evening Hike Information" on page 4.
- EVENING CLIMBING AT STORM MOUNTAIN.** See June 2 for details.
- June 17-20      **ZION (OR TETON) NP BACKPACK.** Final destination depends on the  
Fri.-Mon.      weather and the desires of the participants. Call David Minix at 967-3864 to register.
- Sat. June 18      **THUNDERBOLT RIDGE EXPERIENCE CLIMB.** If you're itching for a hardy, alpine experience, then this one's for you. This saga features an easy, multi pitch climb sandwiched between two four hour hikes. With the marginal snow conditions this year, it should be a rock-hopper's delight. Call John Kennington (942-0693) to register for a 7:00 am start and a long day.

Sat. June 18

**LONE PEAK HIKE.** Difficulty rating of 13.3, maybe less depending on the route chosen. The snow situation is unclear this year, so call leader Geoff Silcox, for details about use of ice axe and exposure. Phone Geoff at 531-6665 to register and get the information on meeting time and place.

**KESSLER PEAK FROM CARDIFF FORK HIKE.** Fred Nash will lead this hike rated 7.4. Fred wants to beat the heat with an early start and early finish. Meet him at 8:00 am at the Geology sign at the mouth of Big Cottonwood Canyon. Phone 943-6906 for more info.

**DESOLATION LAKE HIKE.** Take your pick of two lake hikes. Desolation is rated at 5.4 and will be led by Bryce Baker. He will start 30 minutes earlier than the other lake hike (see below) to keep hikers from stepping on each other's heels. Meet at 8:30 am at the entrance of Big Cottonwood Canyon. Phone 224-8170 (Orem).

**DOG LAKE HIKE.** If you prefer a shorter, easier lake hike, try this one rated 3.0. Carol Anderson will lead. Plan to meet at 9:00 am at the entrance to Big Cottonwood Canyon. For details call 572-4352.

**MT AIRE HIKE.** An easy, pleasant hike to this peak rated 3.8 will be led by Kathleen Romanofski. Meet her at 9:00 am near the defunct Bagel Nosh in the Olympus Hills Mall. Phone 467-9164 for information.

**FAIRFIELD BIKE RIDE.** (MSD) This 75 mile ride visits the Camp Floyd State Historical Site in Fairfield. It was here in the mid 1800's that federal troops bivouacked to monitor early Mormon activities. At one time, it was Utah's third largest city - complete with nearly 30 saloons and assorted sporting houses. Later, when the troops left to join the Civil War, the proceeds of the sale of the material they left behind helped spawn the birth of ZCMI. In addition, Fairfield was along the route of the Pony Express, as well as the site of an Overland Stage Station. (We'll tour Carson's Inn, where passengers spent the night.) Bring a picnic lunch, or purchase one in Cedar Fort. The terrain is mostly flat to rolling, with just a few hills. Meet Elliott (969-3976 after 6:00 pm) in the Salt Lake Community College parking lot at 4500 South Redwood Road at 9:00 am.

**POTLUCK DINNER & DANCE AT THE LODGE.** The Time Lords of Rock and Roll will set the beat to move our feet! Rob Snow and John Byer present their lively "oldies" record show with music from the 50's & 60's. Support our first Lodge party of '88! Social hour at 6:30; pot luck supper at 7:00; dancing starts at 8:00. \$5.00 per person. (Soft drinks available) See you there!

Sun. June 19

**BOX ELDER PEAK HIKE.** This 11,101 foot peak between Timpanogos and Lone Peak is rated 9.6 due to its 4340 foot altitude gain. No exposure however. Karen Perkins will lead. If the group feels like it, a ridge run to nearby Gabowski Peak (erroneously referred to as Peer Pressure Peak) could be done. Call Karen at 272-2225 to register and for meeting time and place.

**MINERAL FORK RAMBLE.** Rating is unknown, however the route is longer than Lake Blanche but not as steep. Lake Blanche is rated 5.7. Meet the leader Jim Wood at 9:00 am at the east end of the parking lot at the mouth of Big Cottonwood Canyon. (Phone 968-5634)

Sun. June 19

**TUSCARORA & WOLVERINE PEAKS HIKE.** Starting from the Lodge, the rating is 5.7. Meet Wick Miller at 8:30 am at the mouth of Big Cottonwood Canyon to carpool up to the Lodge. Wick will go up via Catherine's Pass and depending on the group mood, will go down by some other route. For info call him at 1-649-1790.

**DOG LOVER'S HIKE.** How about joining Spot, Bowser, Fido, Butch and others for the 4th Annual Dog Lover's Hike. Meet Ann Walthall at the Forest Service parking lot at the upper end of Mill Creek Canyon at 10:00 am. The hike will be short and will terminate at a place where the dogs can drink. Bring a leash and treats for your dog. Bring treats for yourself too... You must be able to control your dog. After the hike is underway, the dogs may be released. Phone Ann at 521-2538 for planning details.

**GREENS BASIN FROM DAYS FORK HIKE.** This will be an experimental afternooner for those who are inclined to sleep late or who are otherwise busy on Sunday morning. Douglas Stark (277-8538) will meet interested hikers for this easy rated (2.5) outing at the east side of the Big Cottonwood Canyon parking lot, at 1:00 pm.

**JUNE SOCIAL.** This month we're going south for Cajun and Dixie fare. Come enjoy some southern comfort and comedy (old Justin Wilson records will be available, and bring along any sounds of the south you might have.) Bring some grits to share and \$1.00 to cover costs of paper stuff. (Cindy kindly requests no red beverages because of her white antebellum couch.) For recipe ideas call Cindy Cromer at 355-4115, and other information call Linda Hatcher at 484-3851. Southerbn hospitality will be alive and well at Cindy's at 816 E. 1st South at 6:00 pm. See ya'll there!

Mon. June 20

**MONDAY NIGHT BIKE RIDE.** (NTD) Parleys Canyon. Meet leaders Kermit Earle and Bob Weirick at 6:30 pm at the Eastwood Elementary School parking lot located at 3305 S. Wasatch Blvd. Join Kermit to ride to George Washington Park (16 miles) or Bob to ride to the summit of Parleys (24 miles). Helmets required for the summit ride. For details call Kermit at 268-2199 or Bob at 486-0133 (W), 487-4377 (H).

Tue. June 21

**VOLLEYBALL.** Summer volleyball, outdoors. Call Jim for details, 943-3321.

Wed. June 22

**WEDNESDAY NIGHT BIKE RIDE.** (NTD) Mill Creek Canyon. See June 8 for details.

Thu. June 23

**THURSDAY EVENING HIKE.** Big Cottonwood Canyon. See "Thursday Evening Hike Information" on page 4.

**CLIMBING PROTECTION CLINIC.** This is a non-medical lecture on how to climb with protection but without aid(s). Meet Ray Daurelle at the boulder in the lower parking lot at Storm Mountain Picnic Area for an enlightening lecture on the placement of protective hardware for free style rock climbing. This is an excellent primer for aspiring leaders. Meeting time is 6:30 pm.

**EVENING CLIMBING AT STORM MOUNTAIN.** See June 2 for details.

Fri. June 24

(No club activities scheduled - Editor's Birthday)

Sat. June 25

PFEIFFERHORN! HIKE. Do a big one with exposure (only on the approach ridge.) You might need an ice axe for the snow field on the final peak ascent. Call George Westbrook at 942-6071 to register. An early start of 8:00 am is planned to avoid the mid-day heat. Meet at the geology sign at the mouth of Big Cottonwood Canyon.

NEFFS CANYON TO THAYNES CANYON HIKE. This fine linear hike rates 7.3. Bring lots of water. "Don't trust the naturally supplied water from springs and streams" says Dr. G. R. Dia. The leader is Gary Whitney, who can be phoned at 533-0905. Meet at the defunct Bagel Nosh in Olympus Hills Mall at 9:00 am.

DAYS FORK TO THE MINE HIKE. Rated 4.6. "Let's have fun!" say the co-leaders Rich and Julie Gregerson. Meet them at the geology sign at the mouth of Big Cottonwood Canyon at 9:00 am. Call 467-6247 if necessary.

TWIN LAKES PASS FROM SILVER LAKE HIKE. Here is a nice 2 1/2 mile long hike with a mild altitude gain of 710 feet, rating 1.9 on the WMC scale. David Oliphant will lead this easy one. Call him at 581-1075 and meet at 9:30 am at the Geology sign at the mouth of Big Cottonwood Canyon.

ELBOW FORK TO THE TERRACES HIKE. Here is an easy 1.9 hike for those of a leisurely bent. John Marks will assemble the group at 10:00 am at the old Bagel Nosh in the Olympus Hills Mall. Phone 278-1092.

Sat. June 25

SOCIAL. Guy Benson will be our host for this unique Saturday Social. He'll be cooking several Northern Italian specialties (Pollo al Cacciatore and Carbonara.) Bring your own favorite Italian dish (no, we don't mean that kind) a beverage, and a big appetite! Call Linda Hatcher for more information (484-3851). Social is at 1160 East 1300 South, (parking on south side of street) at 6:00 pm. Please bring \$1.00 to cover costs of paper stuff.

June 25-26  
Sat.-Sun.

ALPINE CANYON INTERMEDIATE BOATING TRIP (class III). Reservations have been made at Astoria Hot Springs for this Wyoming boating trip on the Scenic and wild Snake river. Send your \$25 deposit to Peter Pecora, 3068 Plateau Dr., SLC, UT 84109 or call Peter at 486-5718 for details. This trip fills quickly, so act soon.

Sun. June 26

TIMPANOGOS VIA ASPEN GROVE HIKE. One of the big ones - rated 11.6. Notwithstanding the large rating number the route is smooth, gradual, and certainly long. Bring plenty of water, food, and extra clothing to deal with the nearly 1 mile elevation gain. Meet at the Arctic Circle parking lot near the shopping center at 7200 South State Street. Call Richard Conn at 363-6035 to register and plan.

NORTH WILLOW LAKE HIKE. This lake is north of Deseret Peak, in the Stansbury Mountains. The best estimate of the rating is 4.5. The leader Phil Giles wants you to bring lots of water, sunscreen and V8 juice (?) Meet at the Century Theatre at 33rd South and 2nd East at 8:30 am. Phone: 466-5520.

Sun. June 26

GOBBLERS KNOB VIA BUTLER FORK HIKE. Rating is an intermediate 7.7. Morton Pellatt promises not to tear uphill at too fast a velocity. There will be ample time to smell the flowers. Meet at 9:00 am at the east end of the parking lot at the mouth of Big Cottonwood Canyon. MP can be phoned at 278-5607.

LAKE CATHERINE FROM THE LODGE HIKE. Rating is 3.0. Introducing the Two Meadows Series. Hike with Michael Wren through the sub-alpine meadows on the route to Lake Catherine. Next week check out the meadows in Broads Fork. Meet Michael at 9:00 am at the mouth of Big Cottonwood Canyon. Phone 277-5272. This would be a good occasion to activate your wildflower handbook.

MAYBIRD LAKES HIKE. Join leader Floyd Meads to discover why he likes the Maybird Lakes hike so much. Meet at 9:00 am at the mouth of Big Cottonwood Canyon. Call him at 292-0284. Rating is an intermediate 6.0.

ALPINE LOOP BIKE RIDE. (MSD) Meet leader Bob Norris behind the Kountry Korner convenience store in Alpine Utah at 9:00 am. This incredibly scenic ride climbs up the back side of Mt. Timpanogos and descends through Provo Canyon with a brunch stop at Sundance. Bring money or carry your brunch with you. Approximately 40 miles. For more information call Bob at 967-5476 (H), 266-2664 (W).

Mon. June 27

MONDAY NIGHT BIKE RIDE. (NTD) City Creek Canyon. Those with any legs left from Sunday's Alpine Loop Bike Ride see June 13 for details.

Tue. June 28

VOLLEYBALL. Summer volleyball, outdoors. Call Jim for details, 943-3321.

Tue. June 28

PAYETTE BOATING TRIP WORK PARTY. This meeting will coordinate the upcoming Payette Boating Trip. Meet at the Oakwood Storage Center, 5585 S. 320 W., #33 at 6:30 pm.

Thu. June 30

THURSDAY EVENING HIKE. Mill Creek Canyon. See "Thursday Evening Hike Information" on page 4.

EVENING CLIMBING AT STORM MOUNTAIN. See June 2 for details.

July 1-4  
Fri.-Mon.

MOUNTAINEERING HIGH CAMP - LONE PEAK CIRQUE. Instead of driving, we'll be climbing at close and convenient Lone Peak. Featuring excellent climbing, camaraderie and fireworks (in the valley) too! Call John Kennington (942-0693) for details.

July 1-4  
Fri.-Mon.

PAYETTE BOATING TRIP. Mike Dege has reserved a hot spring campground for this weekend. A group will leave Thursday night and another on Friday making this a 3 or 4 day weekend. Rafters, canoeists, and kayakers are welcome to come and play. Planning meeting will be on Tuesday June 28th at the storage shed at 6:30 am. Call Mike at 571-7684 for details.

Sat. July 2

MT EVERGREEN ABOVE SILVER LAKE HIKE. This is rated an easy 2.8. Interested hikers should assemble at 9:00 am at the mouth of Big Cottonwood Canyon. Phone the leader Gayle Stockslager at 582-1429 for details.



Sat. July 2

**BROADS FORK TO THE MEADOW HIKE.** This is the second of the Two Meadows Series. Michael Wren will lead this easy-to-intermediate hike which is rated 4.6. Meet at 10:00 am at the east end of the parking lot at the mouth of Big Cottonwood Canyon, whence a carpool will be formed to go to the trailhead. Bring lunch for a spread on the meadow among wildflowers. Call 277-5272 for additional information.

**KESSLER PEAK FROM CARDIFF FORK HIKE.** This peak has a prominent face which dominates the view from Reynolds Peak across the canyon. Rating is 7.4. Phil Berger is sure you will enjoy this hike. Meet him at 8:30 am at the mouth of Big Cottonwood Canyon. Phone 266-8560.

**MT RAYMOND HIKE.** The route will be up Butler Fork and down by Hidden Falls. This popular loop trip is rated 7.9. Ellie Ienatsch will lead an outstanding trip. Meet at the mouth of Big Cottonwood Canyon at 9:00 am. She can be phoned at 272-2426.

July 2-4  
Sat.-Mon.

**UINTAS BACKPACK.** A nine mile hike up the East Fork of the Bear River will bring us to base camp at Allsop Lake. The layover day offers day hiking options. This trip is exploratory (the leaders haven't been there either.) Limit of 12. Register with leaders Allen Olsen & Ilka Allers-Olsen at 272-6305.

July 2-4  
Sat.-Mon.

**LASAL MOUNTAINS BACKPACK.** There will be a short carry in of about 3 miles from Warner Lake trailhead to set up camp in the Wet Fork of upper South Fork of Millcreek Canyon. An intermediate day hike is planned to the highest ridges from which panoramic views of Arches and Canyonlands can be enjoyed in this very alpine setting. Limit of 12 people. Register with Ann Cheves, evenings 355-0304 or days 538-4097.

Sun. July 3

**FAMILY HIKE.** Bring the little tots, senior citizens, and all other interested parties to the family hike to Cecret Lake. This is quite easy, barely registering a 1.2 on the WMC scale of difficulty. Chris Baierschmidt will assemble the group at 10:00 am at the mouth of Big Cottonwood Canyon. Phone: 486-2529.

**GREENS BASIN FROM DAYS FORK TRAIL HIKE.** Plan for an easygoing and leisurely hike (rated 2.5) to an open meadow near the remains of pioneering mining activity. Call Richard Zeamer at 355-3751 for more information. Meet at 9:00 am at the mouth of Big Cottonwood Canyon.

**NEWCOMER'S HIKE TO CATHERINE PASS.** (Oldtimers are also welcome) This scenic and easy hike is illustrated on the cover of the Wasatch Trails guide book. If the group feels like it, the hike may be extended to Sunset Peak. Catherine Pass is rated 3.7. Sunset will add an additional 1.7, if it is done. Rob Rogalski will lead the trip. Meet at 9:00 am at the mouth of Big Cottonwood Canyon. Call 942-8142.

**REYNOLDS PEAK VIA MILL D NORTH HIKE.** Rated 5.2, this peak has an excellent view of Kessler Peak and Cardiff Fork. If you did Kessler yesterday, you could look back to see where you have been. Mike Hendrickson will launch the hike at 8:30 am. Meet him at the mouth of Big Cottonwood Canyon. Phone 942-1476 for details.

Mon. July 4

FLAGSTAFF PEAK VIA GRIZZLY GULCH HIKE. Rating is about 5. Celebrate Independence Day by waving a flag from the summit of Flagstaff. Geoff Silcox will lead this outing. Meet at 8:30 am at the mouth of Big Cottonwood Canyon. For details call 531-6665.

THAYNES PEAK VIA THAYNES CANYON HIKE. This intermediate hike is rated 7.1. Park at the old Bagel Nosh in the Olympus Hills Mall and carpool to the picnic area near the trailhead to minimize the impact on traffic and parking on this busy weekend. Leader Norman Pobanz will take off at 9:00 am. Phone 266-3703 for details.

MONDAY NIGHT BIKE RIDE. (NTD) Emigration Canyon. This ride will be a "show and go", because the Leader Marty Mason will be gone! Meet near (but DO NOT park in) the Hogle Zoo parking lot at 6:30 pm. Dinner at a nearby valley location may follow.

July 4-8  
Mon.-Fri.

WIND RIVERS BACKPACK. The trip will go in the Boulder, Wyoming entrance. There will be lots of fishing and hiking opportunities. Limit of 8 people. The group should meet at Pinedale on the evening of July 3. Register with Mike Roundy at 278-9752.

Tue. July 5

VOLLEYBALL. Summer volleyball, outdoors. Call Jim for details, 943-3321.

Thu. July 7

THURSDAY EVENING HIKE. Big Cottonwood Canyon. See "Thursday Evening Hike Information" on page 4.

July 8-16  
Fri.-Sat.

ROGUE RIVER ADVANCED BOATING TRIP. (Class III), with several class IV's and one class VI (portage time!). Join us for the best in wild and scenic rivers. Four days on the permit section and a possible extra day upriver. Wildlife includes bear, otter, ring-tailed cat, and black tailed deer. Sign-up early as the final participant list must be sent by mid-June. Send your \$30 deposit and experience to Marlene Egger, 4831 S. Wren Cir. #1, SLC, UT, 84117, or call Marlene at 277-2894.

Sat. July 9

ALEXANDER BASIN HIKE. Rating is 3.3. For an easy woodland and meadow stroll, try this one. Ann Walthall will meet the interested parties at 9:00 am at the Olympus Hills Mall. Phone 521-2538.

LITTLE WATER PEAK HIKE. Rating 4.8. Plan to make this an outstanding hiking and gourmet experience. Bring exotic, tasty, and unusual snacks to trade. Sandra Taylor and Russ Wilhelmsen will lead. Join forces at 9:30 am at the mouth of Big Cottonwood Canyon. The number for information is 583-2306.

WHITE PINE LAKE HIKE. Meet Jim Nicol for an intermediate hike of 6.3 on the WMC scale. Meet at the geology sign at the mouth of Big Cottonwood Canyon at 9:00 am. Phone 261-5857.

SUPERIOR PEAK FROM ALTA HIKE. There is a bit of EXPOSURE on this 6.9 hike. However it is easy to drop out if desired, because the route doubles back. Call the leader Clint Lewis at 322-8318 (work) or 295-8645 (home) for information. Gather at 9:00 am in the parking lot at the mouth of Big Cottonwood Canyon.

Sat. July 9

**LITTLE WILLOW (AKA DEAF SMITH) CANYON HIKE.** After getting by the initial hassle of a cruddy trailhead access, this is a beautiful, seldom hiked canyon. It is narrow, shaded, and shows little evidence of the impact of man. The hike will go up a stream bed, intermittent trail, a moderate amount of bushwhacking, and terminate near a cirque abutting Twin Peaks. A very worthwhile hike. Rating is undefined but probably around 5 to 7. Clayton Benton will lead off at 9:00 am from the mouth of Big Cottonwood Canyon. Phone: 277-2144.

**COFFEEHOUSE** returns to the Wasatch Mountain Club Lodge. Come enjoy an evening of music of all kinds in the unique ambience that only the lodge can provide. Musicians are needed and WMC members and friends are encouraged to apply early. For more information contact Guy Benson 359-6028 (H), 466-3971 (W). Coffee will be served but BYOB and in case of a seating shortage, a cushion. Lodge fee for the concert is \$1.00 plus \$1.00 for an overnight stay. Bring a sleeping bag and if you're a musician, your instruments for the inevitable jam session.

July 9-10  
Sat.-Sun.

**UINTAS MODERATE BACKPACK.** Beat the crowds and the mosquitoes on this trip with leader Robert Rogalski. Call 942-8142 for info and to register.

July 9-10  
Sat.-Sun.

**RIVER SAFETY COURSE.** Taught by Ken McCarthy. This course will be similar to last year's class and will cost \$30.00. Pre-registration is required. Call Jeff Barrell at 943-2836 for details and to register.

Sun. July 10

**SALT LAKE OVERLOOK VIA DESOLATION LAKE TRAIL HIKE.** Carol Anderson leads this nifty 3.5 rated hike starting at 9:00 am. Assemble at the out-of-business Bagel Nosh in the Olympus Hills Mall. Call 572-4352.

**HONEYCOMB CLIFFS VIA SILVER LAKE TO TWIN LAKES PASS HIKE.** This hike isn't done often enough. Rating is 4.6. Bruce Harrow will begin at 9:00 am at the Geology sign at the mouth of Big Cottonwood Canyon. Phone 359-7509 for details.

**LAKE BLANCHE HIKE.** One of the most popular hikes takes you to the base of the Wasatch Mountain Club's emblematic mountain - Sundial. Rating is 5.7. Ralph Hathaway will do an early start at 8:30 am from the mouth of Big Cottonwood Canyon. Call 583-3240. Bring water and V-8 juice.

**SUNDIAL HIKE.** Go to the summit of the Club's emblem mountain. Rating is 9.9 with significant EXPOSURE on the summit. Last year Mark Swanson and Ilona Hruska took two different routes from Lake Blanche to the summit. What might they do this year? Meet at 8:00 am at the Geology sign at the mouth of Big Cottonwood Canyon. Phone 487-0917 for info.

Thu. July 14

**THURSDAY EVENING HIKE.** Mill Creek Canyon. See "Thursday Evening Hike Information" on page 4.

Sat. July 16

**PROVO PEAK HIKE.** The time is here for the second in the BYU series. If you liked Heritage Mountain last month, you will love this one. Rating is an estimated 5 plus or minus. Meeting place: Front of the Bagel Nosh in the Olympus Hills Mall at 9:00 am. Howard Wilkerson (277-1510) will lead a great hike.

July 22-24  
Fri.-Sun.

**WESTWATER BOATING TRIP (CLASS III+).** Call leaders Randy & Kathy Klein at 466-8387 for details or to register. \$25 deposit required.

July 22-25  
Fri.-Mon.

**YELLOWSTONE BICYCLE TRIP.** Cycle over the Continental Divide, past Quake Lake, Hebgen Lake, Yellowstone Falls, Mammoth Hot Springs, and many other gorgeous areas. Stay at our cabin at Henry's Lake, as we have done in the past. Rain guaranteed. Phone Bob Wright, 1-649-4194 for info.

July 23-25  
Sat.-Mon.

**WIND RIVERS FAMILY BACKPACK** with Ken Kraus. Details in the July *Rambler*

July 23-25

**WIND RIVERS BACKPACK** with Peter Hansen. Details in the July *Rambler*.

Aug 3-7  
Wed.-Sun.

**CATARACT CANYON ADVANCED BOATING TRIP.** Call leaders Randy & Kathy Klein at 466-8387 for details or to register. Trip deposit of \$50 should be received by June 20th because the Park Service requires advance notification of participants on this trip.

## International Mountain Equipment Inc. (IME)

A Small Shop Offering  
Expertise in All Areas of:

- Library
  - Free Catalogues
  - Videos
  - Equipment Rental
- Rockclimbing  
Mountaineering  
Alpinism  
Backcountry Travel



INTERNATIONAL  
MOUNTAIN  
EQUIPMENT INC.

### Hours:

Monday-Friday 10am-7pm  
Saturday 9am-7pm  
Open Sunday 9am-7pm

3064 So. Highland Drive  
Salt Lake City, Utah 84106  
(next to Villa Theatre)  
(801) 484-8073

We offer the most complete selection of quality rock and ice gear in Salt Lake City.

Rock climbing classes and private guided climbs available. Also international treks and expeditions.



### We Love Mountain Bikes

Come in and check out the



**Specialized**  
"Hardrock" \$379

**Univega**  
"Alpina Sport" \$543

**Specialized**  
"Stump Jumper" \$719

**Ritchey**  
"Timber Comp" \$1525

**SPECIALIZED**  
**UNIVEGA**  
**RITCHEY**

## WASATCH TOURING

702 East 100 South, Salt Lake City / 359-9361

**IT'S HERE! - THE NEW GUIDE WRITTEN BY JOHN VERANTH  
AND PUBLISHED BY THE WMC  
HIKING THE WASATCH**



**KIRKHAM'S IS HOLDING AN AUTHOR'S PARTY  
THURSDAY, JUNE 9, AT 7:30 PM  
3125 South State  
for  
JOHN VERANTH**

John will give a short talk and slide show on his new book *Hiking the Wasatch*, published by the Wasatch Mountain Club. He will autograph copies of the book.

FROM THE



## INFORMATION DIRECTOR

by Linda Wilcox

### KUED AUCTION/FUNDRAISING EVENT BE A TV STAR! (MAYBE)

Last year a large group of Wasatch Mountain Club members volunteered to answer phones for an evening (on television!) for KUED Channel 7 as part of their fundraising auction. The Club also donated a night at the lodge as an item to be auctioned off. Once again this year the Board has approved a similar donation, and we have also offered our services as phone volunteers. At press deadline time however, KUED could not confirm a date for us to appear, although they tentatively may still want to use our people power on the phones.

Dates and times of the event are:

Monday, June 6	6:30-10:30 pm
Tuesday, June 7	6:30-10:30 pm
Wednesday, June 8	6:30-10:30 pm

If you are interested and available on any of those three possible dates, please call me at 363-6444 evenings. Let me know quickly, since by the time this reaches you the event will almost be upon us.

### KRCL PROJECT

Exciting news! As of mid-May, 3 scripts for the "Wasatch Trails" series which the Mountain Club is producing for KRCL (FM 91) have been recorded. More are scheduled to be taped later in May. We are aiming for a minimum of 24 scripts, and as soon as we have about 12 produced, the station will log them and play them on a regular schedule.

Just as a reminder, we still need input - stories, jottings, slices of the early history of the Wasatch Front (especially Big and Little Cottonwood Canyons) that can form a 3-5 minute piece for airing on the radio. I'm sure many of you know of fascinating events, nuggets of historical value, or vignettes of life in the Wasatch. Won't you share them with us?

Many continuing thanks to Allen Eickemeyer and Randy Klein, who are doing the bulk of the work on this project. Please call Allen at 1-649-3632 if you'd like to get involved. And keep your ears tuned to KRCL soon to hear our spots!

## ENTERTAINMENT

by Donna Kramer

### NOTES OF APPRECIATION

The Wasatch Mountain Club expresses much appreciation to the hosts and hostesses of the Sunday Socials in March and April. Bob and Deana Wright offered their hospitality (and hot tub) in March. They also get the "good sports" award, since Deana suffered a painful fall one hour before the social. Their daughter welcomed us, while Bob took Deana to the hospital!

In April, Cherry Wong stirred up "travel fever" with her fascinating slides of Russia. Thanks as well to Sherie Pater for obtaining the clubhouse for WMC use.



**DANCING!**

**FIRST LODGE PARTY OF 1988  
TIME LORDS OF ROCK AND ROLL  
PRESENT  
MUSIC FROM THE 50's AND 60's  
SATURDAY, JUNE 18**



*photo by Earl Cook*

Social Hour:	6:30
Pot Luck Dinner:	7:00
Dancing:	8:00

**\$5 per person**

**Soft Drinks Available**



## MOUNTAINEERING

### MOUNTAINEERING RAMBLINGS

by John Kennington

Once again we're off to a successful climbing season, the Beginner's Climbing Course proceeded smoothly within a narrow window of drastically adverse weather. A small but prolific group of students were schooled in the basics of moving across rock and some very rocky snow. All survived without too many bruises. Many thanks to instructors: Jan Baker, Keith Diehl, Ray Daurelle, Lenny Nelson, Herb Hayashi, Paul Horton, Bob McCaig, Mike O'Donnell, Debbie Reed, Bill Shepard and George Swanson. Students included: Kira Kilmer, Allan Duvall, Bob Johnson, Margaret Robinson, Patrick Robinson, Eric Reichmuth, Bob Stevenson and Cindy Wilcox. These and other new climbers may continue by climbing on Thursday nights and participating on experience climbs. We have also scheduled a protection placement clinic on June 23 for prospective leaders.

The Wasatch Canyon Master Plan has now reached a critical stage. The selection of scenarios is to be published this month for our review and comment. Please be sure to become familiar with the Plan and make your comments. We need to insure that our rock climbing and other dispersed recreational needs are provided for. This comment period will end about mid July.

If there are any trips that you would like to lead, call 942-0693 to schedule them.

FROM THE

## HIKING DIRECTOR

### I'M SORRY, AND HELP!

by Tom Walsh

Without volunteers to run the Wasatch Mountain Club there would be no one to lead trips, hold office, or do the countless things the Club does. To help the directors plan the activities like hiking, skiing and rafting, an annual Activity Survey is sent out with the membership dues forms. The volunteers who are willing to help are thus identified. Unfortunately there are many more activities than volunteers available to lead them.

Some of the volunteers willing to lead hikes have been called numerous times. I'm sorry about that; the hiking committee does not intend to be obnoxious. For those who have been annoyed at too-frequent requests to lead hikes, please accept my apologies.

If we had more volunteers the burden on the few would be relieved. Pleas to help out could be cut back. (Life would be easier for the hiking committee, also.)

How about a few new faces to lead hikes and overnight trips? Leading a trip or activity is NOT overwhelming - lots of club members have led dozens of outings and have lived to tell about it. Lots of people find leading a trip to be a satisfying and rewarding experience. Give it a try!

If you want to lead a specific trip or some special hike, give me a call. Even if you don't have a specific mountain in mind, phone in if you are willing to help with hikes in general. Call Tom Walsh at 969-5842 after 6:00 pm.



# CONSERVATION NOTES

by Chris Biltoft and Mary Fleming

## A July Master Plan Comment Period

The Wasatch Canyons planning process is edging towards a list of development scenario options to present for public comment in July. Instead of confronting controversial issues such as Snowbird expansion into White Pine, Ski Interconnect, and commercial development directly, the scenarios are presented as a menu of alternatives. While this is confusing and frustrating to those trying to follow the process, it permits a range of different solutions to each major conflict. For example, Interconnect alternatives range from no Interconnect to a complete transportation system that joins Park City to all canyon resorts by lifts, complete with expanded downhill ski terrain and new facilities en route. Such a diversity of choices make it difficult to focus on specific issues, and may lead to an ambiguous public response. It is fairly obvious, for example, that the City wants a Big Cottonwood Canyon sewer, and they are willing to let Solitude build a hotel and condos in order to get it. Yet, it is difficult to prize this issue out of the scenario choices.

The public will have opportunities for comment at yet to be announced July public meetings, by letter, or through a questionnaire being produced by the contractor Bear West. The questionnaires will attempt to guide respondents through the complex issues created during the master planning process. Bear West intends to mail questionnaires to scoping meeting participants who signed the attendance roster. Additional questionnaires will be available, along with maps and other information, at the County Planning Office at 21st South & State, and at public hearings. These questionnaires are likely to focus on the scenario menu rather than specific areas of conflict. Vigorous support for backcountry recreation is needed at the public meetings to minimize ski area encroachment and canyon urbanization. Public meeting dates will be published in the *Rambler* when they become known.

## Trail & Tree Day Planning

The Club is again planning trail maintenance and tree planting events. These events are scheduled for July 16th and September 10th or 17th. On July 16th the emphasis will be on trash pickup and trail maintenance in Big

Cottonwood Canyon. REI is concurrently sponsoring work on a Mill D Mtn. Bike trail. Work activities will culminate in an afternoon cookout at the Lodge, with the Club providing food for the participants. We will have a meeting with the Forest Service coordinator on June 12 to iron out details, which will be published in the July *Rambler*. We hope to include two new projects: 1) relocation of the upper part of the Snake Creek Pass Trail, which was obliterated by a ski lift maintenance road. 2) Clearing some deadfall in Greens Basin to open up new backcountry ski terrain. Tree planting will be included in the September event. Anyone with suggestions for trail maintenance projects, or with an interest in attending the 12 June planning meeting please contact Chris Biltoft at 359-5645.

## Project FLEA Subcommittee hearings

A first set of hearings on Congressman Owens' Utah-Federal Land Exchange Act (Project FLEA) were held before the House Subcommittee on Public Lands on May 20. Like its predecessor Project BOLD, the Act is an attempt to exchange federal and state land sections to form consolidated blocks for improved management. The act presents both opportunities and dangers: There is opportunity for the State to acquire blocks of land to manage for economic development. There is a danger that the State would sell the lands or abdicate control to politically powerful interest groups at the expense of the public. There is also a danger that these interested groups will cut a land exchange deal to their own advantage rather than permit public participation. The Governor, for example, is politicking for commercial lake front property on Lake Powell.

In spite of the dangers, Project FLEA may help shield sensitive lands from development and provide desperately needed revenue for Utah schools. There was a general consensus at the hearings that the exchange must take place in stages, with a transition period to allow for adjustments by land user groups. Another possibility is linkage between the pro-development FLEA and a BLM wilderness bill. Such linkage, however, is likely to be resisted by anti-environmental interests. Comments can be sent to Wayne Owens, 1728 Longworth Bldg, Washington DC.

# TRIP · TALK

## BOATER'S WORK PARTY AND SPRING SOCIAL

April 23, 1988  
by Larry Hardebeck

It didn't rain and no one had to move the boating equipment to a new storage center. What more could we ask for? Well, maybe all the work could already have been done - right! Of course not. That would be too easy.

The relatively large contingent of boaters were well prepared to do an overhaul on any and all equipment needing rehabilitation for the coming river season. I was quite surprised at the number of rafts that needed old patches re-glued. These rafts were mostly the vintage rafts as the self-bailers appeared to still be in excellent condition. Although raft washing and patching seemed most popular, the large



Craig Homer and Bev Henry inspect the raft repair kits. Photo by Larry Hardebeck.



Here's proof that kayakers patch rafts. Photo by Larry Hardebeck.

number of people made it very conducive to the performing of a very wide variety of chores. Repair kits, first aid kits and kitchen kits got a good inventory while stoves received a good cleaning along with the rafts. It is always surprising what is thrown out. Why did we need that stuff in the first place?

One great thing about work parties is that you have such a good opportunity to share river stories and plans of future river trips while you are helping out. I am really disappointed that I can't get at least 2 months of vacation just for the possible river trips I could go on this year. Life just isn't fair. Maybe I should become a teacher. Should I sacrifice some of my backpacking? Maybe not go home for Christmas?

As with most boating work parties, there are usually at least a few potential new club members. I enjoyed talking with these people and giving them a rundown on the WMC boating trips available and a summary of the runnable rivers in Utah and the surrounding area. The WMC had been quite a help for me when I was getting involved in river running and I enjoy seeing others find boating friends through the club and have the opportunity to go on boating trips at affordable prices.

After we figured the cleaning was done and we could not make anything much better than it already was, it was time to leave our fun for the day. Some of the work party people, other boaters and a few seasoned partiers joined in a barbecue at Mike Dege's house. Mike just had to try out his new barbecue which was great for handling a large variety of food.

Slides were later provided by Mike Dege, Peter Pecora and myself, while Mike also provided some interesting videos of river running in California and adjacent states. The party finally closed with an encore slide sequence of a Mountain Clubber running the hole in Scull Rapid on a Westwater trip last fall.

Thanks to all the participants of the Work Party. I apologize if I left out anyone's name. Helpers: Jeff Barrel, John Veranth, Janis Huber, Bill Adams, Walt Haas, Donna Kramer, Annie Holt Lewis, Patti Giffen, Vera Novak, Tony Ackerman, Chuck Denton, James Reichert, Ken Workman, Jim Elder, Craig Homer, Bev Henry, Andy Childs, Peter Pecora, Tim & Liza Poole, Dave Hartley, Bill Yates, Jeanette Embry, Carl Cook, Frank Ryburn, Jim Nicol, Marlene Egger and Larry Hardebeck.



Mike Dege shows off his new BBQ. Photo by Larry Hardebeck.

## MOUNTING MOUNT OLYMPUS ON MOTHER'S DAY

May 8, 1988  
by Ann Wechsler

The Mount Olympus south face trail is generally a blistering, two water bottle, rattlesnake-dodging hike. Not so on Mother's Day, 1988. Rain drizzled on us in the Olympus Hills parking lot as we (Mark Swanson, Monty Young, Norman Probanz, Ilona Hruska, Art Griffen, and James Reichert) waited for our leader, Tom Walsh, who must have been making alternate plans for the day. After his arrival and some nervous glances at the mountain, we decided we should go at least as far as the stream crossing and assess the outlook then.

We quickly reached the stream (with Monty in the lead), but in the fraction of a second that we paused to rest, I can't recall any further discussion of the weather. Bodies quickly ascended into the mist, and on we climbed. The patches of snow on the ground quickly became a thin blanket of snow, and the blanket soon covered the trail. Our athletic leader stumbled four times, an indication of the condition of the trail, not of his state of mind, I'm sure.

I stopped often to eat snow (this was definitely a two snowball hike) and listen to the solitude. Snow muffles sound, and with no wind, the mournful call of a canyon wren was particularly haunting. Once or twice the clouds parted to reveal the valley, but long before we reached the saddle we were socked in again and putting on all available protective gear. This was a ski tour without the boards! We drank hot beer and cold coffee (I leave it to the reader to puzzle over how that came about) and pretended that our soaking feet were not cold. There was no more discussion of proceeding to the summit (Phew!) with a foot of snow on the ground. This turned out to be a wise choice. On the way down we spotted some "mini" avalanches. Not being well versed in the lexicon of avalanches, Tom (of dubious Scandinavian descent) dubbed it an "aufrockschlippenuntrollenschnee."

As we descended, the weather cleared and if one looked closely, steam could be seen evaporating from our modern textiles. Iced coffee would have been welcomed then. As we dashed off to see the Lakers whip the Jazz at the Los Angeles Forum, I reflected that this was a Mother's Day well spent.

## CITY CREEK TWIN PEAKS

April 17, 1988  
by Howard Wilkerson

I first did this hike on a trip led by the late Shelly Hyde several years ago. It hadn't appeared in the *Rambler* since, so I proposed to lead it at the first hiking committee meeting this year. The hike follows an old jeep trail up Perry Hollow to a double topped high point on a ridge above the Avenues that overlooks City Creek Canyon. Unlike many of the foothill hikes, the grade is fairly moderate, with only a couple of steep sections and no bushwacking. It also provides a rather spectacular view of the Salt Lake Valley and the vertical nature of the Wasatch Front.

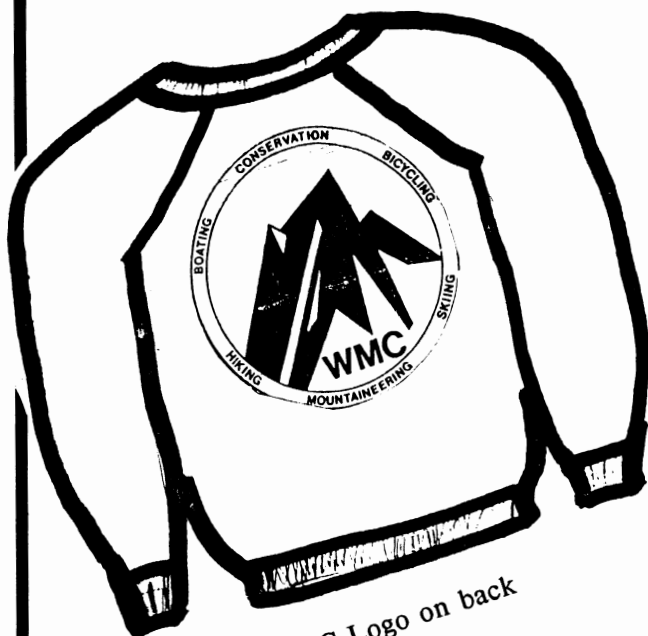
At the top, we found a strange collection of items: a large family Bible, Book of Mormon, a satchel, hairbrush, sweater, sweatshirt, sleeping bag, and most disturbing: a pair of inside-out jeans with pantyhose still attached. One foot of the panty-hose had been torn off. The items were damp, indicating they had been left there for a day or two, since it had rained the day before.

After the hike, I turned the collection over to the Salt Lake City Police, who agreed the items were suspicious. They checked recent rape and missing persons files, but nothing turned up. (My sister-in-law is a dispatcher for the police department, who kept me informed.) I still wonder who that woman was, and why she had left her clothes up there.

Participants: Howard Wilkerson (leader), Karen Marshall, Audrey Palfrey, Marianne Ausserisses, Herbert Dailey, Evan Case, Matt Case, Kathy Hendriksen, Jim Brown, Erin Brown, Alex Brow, Aaron Jones, Jerry Hatch, Martha Veranth, Janet Neiman, Audrey Kelley, Leslie Woods, Sandy Niederhausen, Jay Niederhausen, Joan Stevens, James Wright, Elfie Wright, Carol Linds, R.C. Lindsay, Peggy Reiner, John Winter, Claudia Sippel, Bruce Nibley.



## ADVERTISE WITH YOUR OWN WMC TEE OR SWEAT SHIRT



WMC Logo on back



WMC Badge on front

High quality Russell shirts 50/50 cotton/poly

### PRICES

Tee shirts	\$10
Sweat shirts	\$20

### SIZES

	<u>adults</u>	<u>kids</u>
XS		2-4
S	34-36	6-8
M	38-40	10-12
L	42-44	14-16
XL	46	

XXL Tee only in Red, Silver & Lt Blue

### COLORS: Royal Blue or White on:

- |                |                  |
|----------------|------------------|
| * White        | * Turquoise      |
| * Yellow       | * Sea Mist Green |
| Gold           | * Island Green   |
| Orange         | Kelly Green      |
| * Red          | Light Blue       |
| * Cardinal Red | * Mid Blue       |
| Maroon         | * Royal Blue     |
| * Pink         | * Navy Blue      |
| * Hot Pink     | Sand             |
| Lavender       | * Silver         |
| Periwinkle     | Grey             |
| * Purple       | Brown            |
|                | * Black          |

### HOW TO ORDER

One order will be placed Monday July 11, 1988.  
Send item, quantity, size, color/ink color, and  
alternate color/ink color, with check made out to:

C. L. DENTON  
2666 N. 400 E.  
North Ogden  
UT 84404

QUESTIONS? Call:  
1-863-2628 days  
1-782-5514 eves

\* Sweat shirt colors  
Tee shirts available in all colors

**ALL PROFITS GO TO THE WMC GENERAL FUND**

THANKS TO ALL WHO ORDERED SHIRTS LAST DECEMBER! PROFIT TO WMC WAS \$120.

## SIERRA CLUB OUTINGS

Sierra Club Tuesday Night Hikes are designed to be easy and sociable. They are open to non-members. The actual destination in the indicated canyon will be chosen by the leader. No registration is necessary. Meeting time is 6:45 PM. For hikes in Millcreek Canyon, meet in the Olympus Hills Mall parking lot, just south of the defunct Bagel Nosh. For hikes in Big Cottonwood Canyon meet at the Geology Sign at the mouth of the canyon. For hikes in Little Cottonwood Canyon meet at the parking area a few yards northwest of the fork at the mouth of the canyon. If you have any questions call the leader.

### FRIDAY-SUNDAY JUNE 3-5

Backpack to Swasey Peak in the House Range west of Delta. Register with leader Doug Clark by May 26th at home, 562-1706, or at work, 486-7481.

### TUESDAY JUNE 7

Big Cottonwood Canyon. Leader Walt Haas, home 534-1262, work 581-5617.

### TUESDAY JUNE 14

Big Cottonwood Canyon. Leader Jim Catlin, home 531-7552, work 582-5847.

### WEDNESDAY-SUNDAY JUNE 15-19

Flat water canoe trip through Labyrinth Canyon. Leave Wednesday after work, return late Sunday night. Register by 11 June with leader Preston Motes, home 565-0068, work 263-3051.

### TUESDAY JUNE 21

Big Cottonwood Canyon. Leader Dick Dougherty, 322-4610 after 6 PM.

### TUESDAY JUNE 28

Millcreek Canyon. Leader Ann Wechsler, 583-2090.

### TUESDAY JULY 5

Little Cottonwood Canyon. Leader Preston Motes, home 565-0068, work 263-3051.

## CLASSIFIED ADS

### AD POLICY

Members may place classified ads for used sports equipment free of charge. Other classified ads require a \$5.00 donation to the WMC for up to 20 words with \$.20 per word over 20. Words of 2 letters or less will not count as a word.

Send your ad (with a check enclosed if it is not a used sports equipment ad) before the 13th of the month to Sue DeVall, 11730 South 700 West, Sandy UT 84070 or call Sue at 572-3294 for information.

The Rambler cannot accept any ad that is inconsistent with the purposes of the WMC, or that offends the sensibilities of club members.

### HOUSE SITTER WANTED

Joanne & Wick Miller need someone to house and dog sit July 1 - Aug 6 for their house in Hidden Cove (just east of Summit Park). Call 1-649-1790.

### SERVICES

OUTDOOR EQUIPMENT REPAIRS. Reasonably priced. Fast Service. Specialized designs & retrofits. Call Sue DeVall at 572-3294 or at REI 486-2100.

### TRAVEL OPPORTUNITIES

NEPAL. Low cost private tour this fall includes trekking, Everest base camp, Buddhist festivals and a river run. Call Donna, 272-0418.

### USED EQUIPMENT

82 HAUASU 18' INFLATABLE RAFT. With wood frame & floor, 4 10' ash oars feathered, bow storage bag. \$1200. 801-259-5508.

KAYAK FOR SALE. Perception Mirage II. High performance design is versatile and easy to learn in. Full-size for outstanding stability on leans and braces with super control on turns. Minicell foam beams for light weight. Nearly new - used 6 times. Color: Red Dart. Cost, new: \$620. Asking \$425 (boat only), \$525 (with Harmony Spray Skirt and Voyageur Stow Floats). Call Dave Smith at 278-6515 (after 7 pm) or 486-2100 (before 5 pm)

BICYCLE. '87 Cannondale 52 cm frame Campagnolo Nuovo Record - a classic! Criterium Geometry. This bike sells new for \$1450. I'm asking \$850. Call Chris at 328-4604.

BACKPACKING EQUIPMENT. 1) Gregory Cassin PACK. Like new. Large size, 7056 cu in. Has accessory pocket on back of pack. \$225/offer. 2) Holubar Trimlite DOWN BAG. 5" loft, 3 lb. Stuffs down to bread load size. Fits to 6'6". \$50/offer. Call Ken 322-4160

TENT. North Face Oval Intention. 4 season, 2 person. Like new. \$475/offer. Call Kathy 562-2381

OUZEL WHITEWATER DORY for sale. Fiberglass with oak gunnels. Any reasonable offer accepted. Call 484-6001

## JOHN M. HERBERT 1911-1988

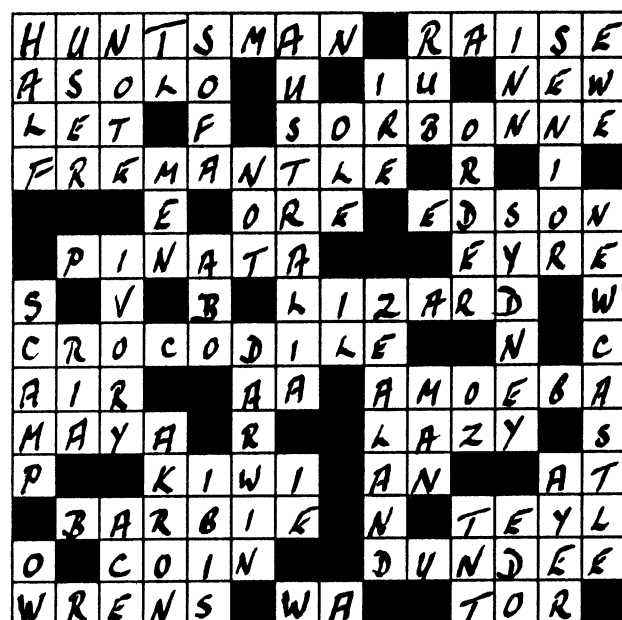
John M. Herbert, 76, formerly of Ogden, died Saturday, April 2, 1988, of injuries sustained in a skiing accident in Wyoming.

He attended Oregon State College and earned a bachelor's degree in forestry in 1935. He entered the U.S. Forest Service and was a district forest ranger in Paisley, Oregon. In 1956, he moved to Ogden as assistant regional forester in charge of recreation and lands for the Intermountain region. He retired in 1968.

He helped develop the ski industry in Utah, Idaho, Wyoming and Nevada, and developed ski safety standards which were used nationally. He was an honorary member of the National Ski Patrol. He was manager of the Olympic ski team in 1952, when the Olympics were held in Norway. He received an award from the secretary of agriculture for his contributions to national forest recreation.

After retirement, he was involved in backpacking, woodworking, and white water kayaking.

## ANSWER TO MAY CROSSWORD PUZZLE



## SKY CALENDAR FOR JUNE

by Ben Everitt

### MOON

Last Quarter	June 6	July 6
New Moon	June 14	July 13
First Quarter	June 22	July 21
Full Moon	June 29	July 28

### PLANETS:

JUPITER has joined MARS in the morning sky, rising just before the sun.

SATURN will be at opposition (opposite the sun) on June 20, rising at dusk and setting at dawn.

VENUS and MERCURY are too close to the sun for good visibility.

Finding the Arches camp-out booked up, the astronomical committee set up camp on May 14 at Monument Point near Locomotive Springs. We watched the shadows lengthen over the emerald green lake as the sun set over the snowy crest of the Raft River Range, but we sure didn't see Mercury where the book says it was supposed to be. Has anyone else seen it? Let me know. I'm thinking that our skies are just too polluted to see Mercury except on the rarest of occasions.

### STARS:

The sky is taking on its summer aspect. The bright yellow star Arcturus (Alpha Bootis) is overhead at dusk, while rising in the east are the blue-white stars Vega (Alpha Lyrae) and Deneb (Alpha Cygnis).

**Rambler Crossword # 8**  
**"ASTROPOLITICS CROSSWORD"**  
 Rating MOD+ (Partly cryptic, in one of two  
 senses - hence NTD for astrologers,  
 currently-employed White House Aides,  
 students of the occult, and those with ESP)

**Across**

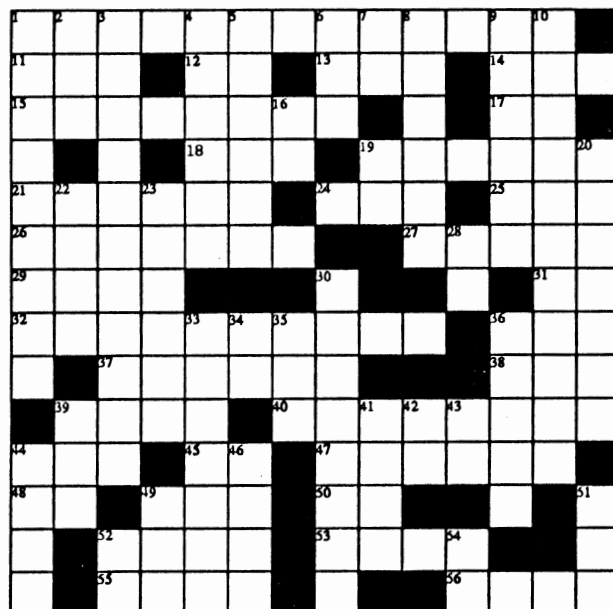
1. Second Tarot mystery: controller of the Presidential Destiny.
11. The immensity from which all comes and to which all returns.
12. That is short Latin.
13. Lo, a town in central Utah.
14. Rather cornily, a symbol of fertility.
15. Do tapes try to hide behind these? All part of the richness of life.
17. Occasionally sections of this get sent to Central America for "training" (abbr).
18. Nourished Ymir with four streams of milk.
19. Prescription pain killer.
21. He thought it was a neat idea to ask for more.
24. Crooked gun shoots this beast.
25. High energy molecule (abbr).
26. Symbols of destruction, announced by the fifth angel - though in Utah they were crickets.
27. Did this inspire Regan's revelations?
29. Mite for blind Belisarius.
31. Anti-aircraft (abbr).
32. Cheese embodies fusion of opposites: horrendous sister and Nana's author.
36. Symbol of the womb or heart.
37. Entity for which 21's cabal did it all?
38. The original Frisbee contents.
39. Mongolian message.
40. CUP and the Pumps must have been conceived under this sign.
44. Cheese State (abbr).
45. Diphthong.
47. Personification of Heaven: Incorrectly pronounced, could be a vulgar planet.
48. Indefinite article.
49. Companion of the Order of St Michael and St George (abbr).
50. Plural suffix.
52. Astrological consultant to the White House, distaff side.
53. Allegory of the Holy Spirit.
55. Zone of interpenetration - like the mandorla.
- 56, 44 down. The White House should now be well equipped for these.

**Down**

1. Framework of the White House calendar.
2. Turmeric and ango are mixed.
3. 10's stubborn neighbor.

by **APTERYX**

4. Last sign of the Zodiac.
5. Heated rejoinder.
6. Nevada town.
7. Thus.
8. Zodiacal sign of fecundation and creation.
9. Despatch a first class city to Japan.
10. Cosmic symbol of the complete man.
16. Rainbow worship (abbr).
19. Upon.
20. Creator of off the cuff Presidential wisdom.
22. Gray timber wolf.
23. Common.
28. Greek letter.
30. Search after a crook results in victory.
33. Reclining empire.
34. Symbol for nickel.
35. Blake's symbolic figure.
36. Carrot genus.
39. Counterpart of Yang.
41. Big or little bear.
42. Pahoehoe's companion.
43. Shortened nurse.
44. See 56 across.
46. Sacrificial symbol for the periodic renovation of the world.
49. Goes with bill.
51. One of the four elements.
52. Leo's mo.
54. Locus sigilli (legal abbr).



## WASATCH MOUNTAIN CLUB

APPLICATION FOR NEW MEMBERS/REINSTATEMENT FOR PREVIOUS MEMBERS  
RAMBLER SUBSCRIPTION QUALIFICATION FORM

**DO NOT USE THIS FORM TO RENEW YOUR MEMBERSHIP!**

Please read carefully and fill out completely. Your signature is required.

APPLICANT'S NAMES: \_\_\_\_\_

ADDRESS: \_\_\_\_\_ CITY \_\_\_\_\_ ST \_\_\_\_\_ ZIP \_\_\_\_\_

HOME PHONE \_\_\_\_\_ DAY PHONE \_\_\_\_\_ BIRTH DATE \_\_\_\_\_

I hereby apply for \_\_\_\_\_ NEW MEMBERSHIP \_\_\_\_\_ SINGLE membership in the WMC  
\_\_\_\_\_ REINSTATEMENT \_\_\_\_\_ COUPLE

I \_\_\_\_\_ DO wish to receive the *Rambler* (the WMC publication). Subscription price  
\_\_\_\_\_ DO NOT is not deductible from the dues. I am 18 years of age or older.

Enclosed is \$ \_\_\_\_\_ for one year's (Mar 1 19\_\_ to Feb 28 19\_\_) dues and application fee.  
\*\*\* Make checks payable to Wasatch Mountain Club (CHECKS ONLY) \*\*\*

Remit: \$30.00 for single membership (\$25.00 dues and \$5.00 application fee)  
\$40.00 for couple membership (\$35.00 dues and \$5.00 application fee)  
(NOTE: These rates include the \$12.00 for the *Rambler* subscription)

YOU MUST COMPLETE THE FOLLOWING FOR MEMBERSHIP CONSIDERATION  
THE ACTIVITY DATES MUST HAVE BEEN WITHIN ONE YEAR OF THIS APPLICATION

qualifying activity	date	signature of recommending leader
---------------------	------	----------------------------------

1. \_\_\_\_\_

2. \_\_\_\_\_

I agree to abide by all the rules and regulations of the WMC. I am willing to serve the WMC in the following areas: (please check)

_____ Service Project	_____ Lodge work	_____ Conservation	_____ Rambler	_____ Thurs Night Hikes
_____ Hike Leader	_____ Boat Leader	_____ Ski Leader	_____ Social Assist	

I found out about the WMC from \_\_\_\_\_

APPLICANT'S SIGNATURE: \_\_\_\_\_

MAIL APPLICATION AND CHECK TO: MEMBERSHIP DIRECTOR  
WASATCH MOUNTAIN CLUB  
888 SOUTH 200 EAST, SUITE 111  
SALT LAKE CITY, UTAH, 84111

LEAVE BLANK

Receipt #: _____	Date Received: _____	Amount Recv'd: _____
(or check #)		(less application fee)
Board Approval Date _____		(Rev 3/87 Pub 6/88)

IN CASE OF EMERGENCY PLEASE NOTIFY  
THE SALT LAKE COUNTY  
SHERIFF'S OFFICE AT:

**535-7055**

OR THE APPROPRIATE EMERGENCY  
AGENCY IN YOUR LOCATION.

NOTE: DUE TO TECHNICAL DIFFICULTIES, WE WERE UNABLE TO  
PUBLISH THE NEW MEMBERSHIP LIST THIS MONTH. IT WILL APPEAR  
IN THE JULY ISSUE.

WASATCH MOUNTAIN CLUB  
888 SOUTH 200 EAST, SUITE 111  
SALT LAKE CITY, UT 84111

**6/88**

SECOND CLASS  
POSTAGE PAID  
SALT LAKE CITY, UT  
NO. 053410