

# The Rambler

WASATCH MOUNTAIN CLUB

NOVEMBER



VOL. 65 NO. 11 NOVEMBER 1988

# The Rambler

David Vickery, Managing Editor

Production:  
Pat Beard  
Kate Juenger  
Kathy Klein

Advertising:  
Jeff Pace

Staff Photographer:  
Earl Cook

Classified Ads:  
Sue deVall

Staff Writers:  
Apteryx  
Ben Everitt  
Roseann Woodward

Mailing:  
John Battalio

THE RAMBLER (USPS 053-410) is published monthly by the WASATCH MOUNTAIN CLUB, Inc., 888 South 200 East, Suite 111, Salt Lake City, UT 84111. Telephone 363-7150. Subscription rates of \$12.00 per year are paid for by membership dues only. Second-class Postage Paid at Salt Lake City, UT.

POSTMASTER: Send address changes to THE RAMBLER Membership Director, 888 South 200 East, Suite 111, Salt Lake City UT, 84111. CHANGE OF ADDRESS: This publication is not forwarded by the Post Office. Change of address should be submitted in writing to the Membership Director, 888 South 200 East, Suite 111, Salt Lake City, Utah, 84111. All correspondence regarding the mailing of THE RAMBLER should be directed to the Membership Director at that address. Allow 45 days for address changes.

Submissions to THE RAMBLER must be received by 6:00 pm on the 15th of the month preceding the publication. Mail or deliver to THE RAMBLER office or to the Editor. Include your name and phone number on all submissions.

The right is reserved to edit all contributions and advertisements and to reject those that may harm the sensibilities of WMC members or defame the WMC.

Copyright 1988, Wasatch Mountain Club



## WASATCH MOUNTAIN CLUB

THE RAMBLER, the official publication of the Wasatch Mountain Club is published monthly by and for its members. Persons wishing to become members and receive THE RAMBLER for two months upon written request to the Membership Director, 888 South 200 East, Suite 111, Salt Lake City, UT, 84111 and payment of \$3.00. Checks are to be made payable to the Wasatch Mountain Club. There is a \$10.00 charge for returned checks.

Membership applicants must participate in at least two Club outdoor or service activities, verified by the signatures of approval from the activity leaders. Yearly dues are \$25.00 single, \$35.00 couple. A \$5.00 initiation/reinstatement fee is charged.

### 1988-1989 GOVERNING BOARD

President	John Veranth	278-5826
Vice President	Earl Cook	531-6339
Secretary	Elissa Stevens	272-7215
Treasurer	Tom Silberstorf	467-5734
Membership	Earl Cook	531-6339
Boating	Jeff Barrell	943-2836
Conservation	Mary Fleming	359-5645
	Chris Biltoft	359-5645
Entertainment	Linda Hatcher	484-3851
	Donna Kramer	272-0418
	Roseann Woodward	486-6184
Hiking	Tom Walsh	969-5842
Lodge	Alexis Kelner	359-5387
	Vince Desimone	1-649-6805
Mountaineering	John Kennington	942-0693
Publications	David Vickery	583-7064
Ski Touring	Anna Cordes	467-9430
Information	Linda Wilcox	363-6444

### COORDINATORS

Bicycling	Guy Benson	359-6028
	Bruce Schatmeier	485-7974
Canoeing	Kathy Klein	466-8387
	Randy Klein	466-8387
Kayaking	Mike Dege	571-7684
Sailing	Vince Desimone	1-649-6805
Rafting	Carl Cook	485-4586
Volleyball	Jim Elder	943-3321

### TRUSTEES

Karin Caldwell	942-6065
Dale Green	277-6417
Milt Hollander	277-1416
O'Dell Peterson	Trustee Emeritus
Dale Green	Historian

## WMC PURPOSE

(Article II of the WMC Constitution)

The purpose shall be to promote the physical and spiritual well being of its members and others by outdoor activities; to unite the energy, interests and knowledge of students, explorers and lovers of the mountains, deserts and rivers of Utah; to collect and disseminate information regarding the Rocky Mountains in behalf of science, literature and art; to explore and picture the scenic wonders of this and surrounding states; to foster awareness of scenic beauties; and to encourage preservation of our natural areas including their plant, animal and bird life.

# The Rambler

## NOVEMBER

Board Report	3
Events at a Glance	4
Activities	6
Lodge Director	10
Entertainment	10
Boating Director	10
Canoeing Coordinators	11
Ski Touring Director	12
Information Director	14
Conservation Notes	16
Canyon Master Plan	19
Trip Talk	20
Classified Ads	24
Sky Calendar	25
Grubby Gourmet	25

SALT LAKE CITY, UTAH  
**WASATCH TOURING**



**AVALANCHE RESCUE EQUIPMENT**

ATI 4S Avalanche Transceiver	\$110 <sup>00</sup>
Voll6 Pro or Pack Shovel	\$32 <sup>00</sup>
(Cosmetic second)	
Regular Price	\$142 <sup>00</sup>

**NOVEMBER SPECIAL!**  
**\$99<sup>00</sup> Save 30%**



WARNING: Use of a Rescue Beacon and shovel does not necessarily increase the safety of a backcountry traveler. The understanding of Avalanche Dynamics, and Forecasting as well as practicing proper route selection and travel techniques is a pre-requisite to rescue knowledge and practice.

Call Wasatch Touring for a schedule of Free "Pieps"  
 Clinics and Avalanche Awareness Classes.  
 359-9361 • 702 East 100 South • SLC, UT 84102

## WASATCH MOUNTAIN CLUB BOARD REPORT

Oct 5.

The club will schedule open weekends at the Lodge again this winter. We hope to attract more people to the open weekends by scheduling ski tours in conjunction with the open weekends, and by promoting the open weekends more heavily in the *Rambler*. The charge for attending open weekends will be \$3.

The conservation directors reported that the Brighton Master Plan is now being developed. The club will monitor the plan to make sure that it maintains access to the lodge while providing privacy. The Canyon Master Plan draft is now out. The Forest Service and the Salt Lake City Water Dept are discussing a land swap. The proposed swap would allow more effective watershed management.

Marilyn Earle has resigned as trustee.

Next meeting: Nov 2

## WELCOME

The Rambler and W.M.C. want to welcome the following new club members:

Kevin Maley  
 Gary Rose  
 Mindy White

John Penn  
 John Shavers

## NO EXPERIENCE NECESSARY!

If you would enjoy helping out with the *Rambler* - paste up, errands, typing, artwork - please contact David Vickery at 583-7064.

# EVENTS AT A GLANCE

(See the Chronological Listing for Details)

<u>Nov</u>		<b>BOATING</b>	<u>Dec</u>
5	Work & Lodge Parties		8 Permit & Xmas Party
<u>Nov</u>		<b>HIKING</b>	<u>Dec</u>
			24 Moab
<u>Nov</u>		<b>SKI TOURS</b>	<u>Dec</u>
5	Leader's Choice	20 Scott's Pass	3 Green's Basin
6	Lower Silver Fork	26 Catherine's Pass	3 Desolation Lake
12	Leader's Choice	26 Leader's Choice	4 Catherine's Pass
13	Leader's Choice	27 Albion Basin	4 White Pine
19	Leader's Choice	27 Leader's Choice	4 Easy Snowshoe
20	Beginner's Ski Clinic	27 Beginner Snowshoe	
<u>Nov</u>		<b>SOCIALS</b>	<u>Dec</u>
6	Sunday Social		
		<b>VOLLEYBALL</b>	
(Monday Evenings, 6:30 at the Highland High School Gym)			

## A WORD TO PROSPECTIVE MEMBERS

Prospective members are welcome on all Club activities, with the following exceptions:

- 1) Thursday Evening Hikes are for members only. However, prospective members may attend if the hike is their second qualifying activity for membership and they submit their dues check and application form to the leader before the hike.
- 2) Boating trips are for members. However, prospective members may attend a weekend trip if they use the trip as their qualifying activity (each day counts as one activity.)
- 3) A trip leader may choose to limit a trip to members, especially if there is limited space.

## A WORD ABOUT WMC SKI TOURS

- NTD** (Not too difficult): Terrain is mostly gentle. Participants should be able to do a kick turn, snowplow, and descend a slope by traversing. Usually no avalanche danger.
- MOD** (Moderately difficult): Proficiency climbing and descending intermediate slopes is required. Pieps and shovels may sometimes be suggested or required. If a Pieps is carried, this implies knowledge of how to search for a buried companion.
- MSD** (Most difficult): Strenuous. Usually involve long ascents, steep or narrow descents. Pieps and shovel always required.

ALL SKI AND SNOWSHOE TOURS START AT 9:00 A.M. AT THE GEOLOGY SIGN, LOCATED AT THE EAST END OF THE PARKING LOT AT THE MOUTH OF BIG COTTONWOOD CANYON UNLESS OTHERWISE NOTED.

# KIRKHAM'S.

## Your Only Store When You're Heading For the Great Outdoors.



Here's a sampling of the winter items we have available for you:

### X C SKIS

- Kastle
- Kazama
- Tua
- Fischer
- Swallow
- Bonna
- Jarvinen
- Epoke
- Kneissl

### SUNGLASSES

- Style Eyes
- Ski Optics
- Vuarnet
- Jones

### BOOTS

- Adidas
- Koflach
- Alpina
- Fabiano
- Asolo
- Merrell

### CLOTHING

- North Face
- Moon Stone
- Northern Isles
- Alps
- Wigwam
- Columbia
- Woolrich
- Fox River
- Patagonia
- Wickers
- Sierra Designs
- Royal Robbins
- Marmot
- Hot Fingers

### ACCESSORIES

- Reflex
- Exel
- Swix
- Chouinard
- S.M.C.
- Sherpa
- Rottefella
- Dana
- Voile
- Asolo
- Yakima
- Pieps

### Kirkham's Outdoor Products

Manufacturers of quality products for the great outdoors.

• Daypacks • Fanny Packs • Tents • Gaitors • Luggage • Overmitts  
All made right at our factory/store, so we're able to pass along factory direct pricing to you.



3125 South State • 486-4161 • Open Mon.-Thurs. 9:30-7 pm, Fri. to 9

# CLUB ACTIVITIES

Only activities approved by the appropriate WMC Director can be listed in the Club Activities section of the *Rambler*. Send your proposed activity, for approval, to the hiking, rafting, skiing, etc. director for inclusion in their activity schedule. Those activities sent directly to the *Rambler*, without approval, will not be published.

Sat. Nov 5

LODGE WORK PARTY. Meet at 10:00 am at the lodge to enjoy working with others & accomplish important tasks at your second home. No special skills are needed - just come! Call Vince Desimone (1-649-6805) or Alexis Kelner (359-5387) for more info.

BOATING WORK PARTY. We need to go through our equipment and see what to replace for next season. Meet at the WMC Boat storage shed at 5585 South, 320 West, #49 at 10:00 am. For any additional information, call Jeff Barrell at 943-2836. Show up and help out.

LEADER'S CHOICE SKI/HIKE (MOD). Past WMC president Hank Winawer (277-1997) will lead you on ski or on foot to one of his favorite destinations. Meet him at the geology sign 9:00 a.m. to discover where.

RIVER RAT SEASON ENDER PARTY. This annual event is the time to relive the great moments, see some great slides, and party down and out. We will put in at the WMC Lodge around 6:30. Have a great pot luck supper (boaters always eat well!) and paddle downstream. Please bring only your greatest slides as we don't want to put anyone to sleep. Take out that night or sleep over. There will be a \$1.00 charge (for the lodge) and bring some food if you intend to eat. BYOB or purchase soft drinks at cost.

Sun. Nov 6

LOWER SILVER FORK SKI/HIKE (NTD). Don't worry, be happy. We'll go whether there's snow or not say leaders Art & Margo Griffin (363-1996). So meet at the geology sign, 9:00 a.m. as usual.

SUNDAY SOCIAL. Back by popular demand - a Sunday Social at Roseann Woodward's! (Obviously the WMC needs more volunteers for these things. Please feel free to step forward.) Anyway, Roseann is a good friend of the Grubby Gourmet who has offered to make her famous Texas Chili for the occasion. \$5 will get you a fantastic evening of friends, fabulous food & fun. Festivities begin at 5:00 at 3021 Sequoia Avenue (East on 3300 South, turning north onto old Wasatch Blvd. Turn right at 3100 South and left one short block later onto Cascade Way, then right on Sequoia. Soft drinks \$.50.

Mon. Nov 7

VOLLEYBALL. 6:30 pm at Highland High School (2166 S. 1700 E.) The cost is \$1.00. Gym is located on west side of school, follow signs that say "volleyball". Call Jim for information at 943-3321.

Sat. Nov 12

LEADER'S CHOICE SKI/HIKE (NTD). Flexibility is the word of the day. Leaders will decide on destination depending on snow (or no snow) conditions. Join Mike & Judy Hendrickson (942-1476), 9:00 a.m. at the geology sign.

- Sun. Nov 13      LEADER'S CHOICE SKI/HIKE (NTD). Bob Klimaj (262-1644) has several trips in mind, but he'll choose only one when he views the weather this morning. Bring your skis and your hiking boots to the geology sign at 9:00 a.m.
- Mon. Nov 14      VOLLEYBALL. 6:30 pm at Highland High School (2166 S. 1700 E.) The cost is \$1.00. Gym is located on west side of school, follow signs that say "volleyball". Call Jim for information at 943-3321.
- Sat. Nov 19      LEADER'S CHOICE SKI TOUR (NTD). The leaders would like to meet you at the old Bagel Nosh, Olympus Hills Mall so they can choose a tour in any canyon. The time is 9:00 a.m. Peter & Elizabeth Kiteck (277-5511).
- LEADER'S CHOICE SKI TOUR (MOD). A wise leader knows the problems that may arise when there is inadequate snow cover, so Karen will choose her destination carefully. Meet Karen Perkins (272-2225) at 9:00 a.m. at the geology sign.
- LODGE WORK PARTY. Meet at 10:00 am at the lodge to enjoy working with others & accomplish important tasks at your second home. No special skills are needed - just come! Call Vince Desimone (1-649-6805) or Alexis Kelner (359-5387) for more info.
- Sun. Nov 20      BEGINNER'S SKI CLINIC. Would you like to participate in NTD ski tours this winter but not sure you have the necessary skills? THIS SKI CLINIC IS FOR YOU! Have fun while you practice basic crosscountry and backcountry techniques needed on NTD tours. Group will meet at geology sign at 10:00 a.m. Feel free to call Ellie Ienatsch (272-2426) if you have any questions or concerns.
- SCOTT'S PASS SKI TOUR (NTD). One of the oldies but goodies. A beautiful, well defined trail leading to a spectacular lunch time view. What more could you want? Snow, by this time we hope. The leaders will be Louise Knauer and Janiece Pompa. Meet them at 9:00 a.m. at the geology sign. (485-3116).
- Mon. Nov 21      VOLLEYBALL. 6:30 pm at Highland High School (2166 S. 1700 E.) The cost is \$1.00. Gym is located on west side of school, follow signs that say "volleyball". Call Jim for information at 943-3321.
- Sat. Nov 26      CATHERINE'S PASS FROM BRIGHTON SKI TOUR (NTD+). Work off some of those extra calories consumed at Thanksgiving dinner by joining Peter Hansen (359-2040) on this tour. Be sure to bring some extra crumbs for the chickadees. Peter will be at the geology sign at 9:00 a.m.
- LEADER'S CHOICE SKI TOUR (MOD). Meet your leader at the geology sign at 9:00 a.m. to discover Ken (a.k.a. Jean Claude) Kelley's choice for a fun-filled day of skiing the Wasatch. (942-7730).
- Sun. Nov 27      ALBION BASIN SKI TOUR (NTD). Follow your leader up the road at a leisurely pace from Alta to beautiful Albion Basin. Return by the same route or ski the packed slopes down. A delightful day is planned by Gary Whitney (533-0905) starting at 10:00 a.m. at the geology sign.

- Sun. Nov 27      LEADER'S CHOICE **SKI TOUR** (MOD). A non-rocky surface is promised by our retired ski director, Dan Grice (521-8011). He suggests knee pads, elbow pads, and helmets just in case. Dan will find some great snow if you meet him at the geology sign at 9:00 a.m.
- BEGINNER **SNOWSHOE TOUR/HIKE** (NTD). Call Norm Pobanz (266-3703) for info on trip location and snowshoeing. Meet at the geology sign at 9 am. Enjoy winter in the mountains on snowshoes. No special skills needed.
- Mon. Nov 28      **VOLLEYBALL.** 6:30 pm at Highland High School (2166 S. 1700 E.) The cost is \$1.00. Gym is located on west side of school, follow signs that say "volleyball". Call Jim for information at 943-3321.
- Sat. Dec 3        GREEN'S BASIN **SKI TOUR** (NTD). Starting from the Spruces you will follow a road which switch backs through the forest to a wide open meadow - the site of many a gourmet feast. Join our "charismatic" leader, Jerry Hatch (476-7186), at 9:00 a.m. at the geology sign.
- DESOLATION LAKE **SKI TOUR** (NTD+). Over the hill and through the woods Gary & Pat Burg (485-4911) will lead you on this pleasant tour. The plus rating is due to distance. Plan to meet leaders at the sign at 9:00 a.m.
- Sun. Dec 4        CATHERINE'S PASS **SKI TOUR** (NTD). Approach Catherine's Pass this time from Alta. To be led at a moderate pace by Leslie Woods (484-2338). Leslie reserves the right to change the destination depending on the conditions. Meet at 9:00 a.m at the geology sign.
- WHITE PINE **SKI TOUR** (MOD). Winter or summer, one of the most beautiful spots in the Wasatch. Our leader suggests you be prepared for all types of weather with layered clothing. Pieps and shovels are also suggested. Meet Karen Seeburg (486-5011) at 9:00 a.m. at the geology sign.
- EASY **SNOWSHOE TOUR/HIKE** (NTD). Call Doug Stark (277-8538) for info on trip location, meeting place and time, and snowshoe rental locations.
- Mon. Dec 5        **VOLLEYBALL.** 6:30 pm at Highland High School (2166 S. 1700 E.) The cost is \$1.00. Gym is located on west side of school, follow signs that say "volleyball". Call Jim for information at 943-3321.
- Thu. Dec 8        **BOATERS CHRISTMAS AND PERMIT PARTY.** This is an important event for all WMC Boaters or prospective boaters. This is the time of year when we prepare to apply for next years permits. Show up about 7:30 pm and BYOB. The permit party will be at the home of Carl Cook and Karen Brandon at 2189 Atkin (2830 South, 2189 East). Hope to see you there.
- Dec 24-26  
Sat.-Mon.        **MOAB SLICKROCK COUNTRY **HIKING.**** Day hikes into the wonderful areas around Moab. Base camp in a warm, festive house. Call Sandy & Geoff Freethey at 485-5989 to register.



Sat. Jan 14

AVALANCHE CLINIC. Details in next month's *Rambler*.

## SEASON OUT OF TOWN ACTIVITIES

(details in future *Ramblers*)

Jan 28-Feb 4

DOWNHILL SKIING IN ITALY with George Westbrook (942-6071). George did this trip last year, so you will have an experienced leader. Approximate cost is \$1000 and that includes everything (airfare, meals, lift tickets). Backcountry skiing is available. Call George by November 17.

March

NORTHERN MEXICO BACKPACK. Wick Miller will lead a week's backpack into the mountain and canyon country of the sierras of northwest Mexico. We fly by small plane into Arechuyvo, a small Mexican village that looks more like the last century than the present. From there we hike through the Guarijio Indian country, to the Rio Mayo, and on out to the low lands. Optional three day trip to Creel on the world's most scenic train ride. The size of the group will be limited. Plan to attend a meeting late this fall to make plans. Call Wick at 1-649-1790 for more details.



"Where Team Flowerchildren Hangs Out"

### SKI TUNE SPECIAL

#### BASIC HAND SKI TUNE: \$15

*Includes:* base grind, P-tex hand flat file, hand edge sharpen, base polish and hot wax.

#### DELUXE SKI TUNE: \$25

*Includes:* all of the above plus welding, base structuring, special edge prep and high performance impregnation.

**WILD ROSE, 702 THIRD AVENUE, SALT LAKE CITY  
533-8671**

A Two Minute Drive from the Great Basin Financial District

FROM THE

## LODGE DIRECTOR

by Vince Desimone

### VOLUNTEERS & DATES NEEDED FOR MEMBERS LODGE OPEN WEEKENDS

The WMC Lodge will be open on selected weekends this winter for Club member use. However, we need individuals to serve as hosts & hostesses and to take responsibility for opening and closing the Lodge.

If you would be willing to be in charge and if you have suggested dates for open weekends, contact Vince Desimone at 1-649-6805

## ENTERTAINMENT

by Donna Kramer

Last year many of us celebrated Thanksgiving dinner at Cassie Badowsky's house. We shared an afternoon of fellowship with old and new friends. Savory scents wafted through Cassie's home as each of us shared a favorite culinary delight: cinnamon and cloves, spiced cider and pumpkin pie, cornbread and turkey. Beautifully arranged relish trays, scrumptious desserts and beverages of all types. Laughter, music and a warm "Welcome!" greeted my ears.

If you would like to host either Thanksgiving or Christmas dinner, please contact Linda Hatcher (484-3851) or Roseann Woodward (486-6184). Linda and Roseann will advise those interested in attending the Thanksgiving dinner where and when it will be. The host or hostess for Christmas dinner will be announced in the December *Rambler*. Happy holidays!

FROM THE

## BOATING DIRECTOR

by Jeff Barrell

Well, the boating season is pretty much over and now it's time to put the gear away. It was a good year despite the low water flows that prevailed much of the season. There were no significant injuries on any of the club trips this year, which is fortunate with many more rocks showing. I believe credit is due to safe and responsible boaters who know how to have fun and when to pay attention. The club sponsored a river safety course and a river training course to improve the skills of club boaters. These will be repeated next year with an additional course for beginning kayakers next spring.

The club had 16 trips with a total of 43 river-days and 308 participants. Not bad for a low water year. My thanks goes to the persons who led these trips and made them possible. The boating group would certainly be lacking without these people: Carl Cook, Craig Homer, Marlene Egger, Randy Klein, Mike Dege, Patty Giffin, Clara Elwell, Peter Pecora, Gary Tomlinson, and Gail Blattenberger.

I also want to thank everybody for your support and your willingness to help out doing whatever needs doing. That is what makes our club work. Speaking of helping out, we'll see you at the work party on Nov 5 at 10:00 and get ready to party down that night at the River Rats Party at the Lodge. We have arranged for great food, slides of this year's trips, and stories to go with them. See the activities section for details.

## FROM THE CANOEING COORDINATORS

by Randy and Kathy Klein

As the river season draws to a close (except for you die-hards, and you know who you are), we thought it would be a good time to address some reading materials that will occupy your time until spring runoff starts again. This article will review four different books about whitewater boating, and they are not limited to discussing only canoes. The most recent was published in 1981, and although the discussions of equipment are somewhat out of date, we're not aware of any notable books on paddling technique that are more recent.

*Wildwater: The Sierra Club Guide to Kayaking and Whitewater Boating*, by Lito Tejada Flores, 1978. I can't even believe I'm even reviewing this book in a canoeing article. Lito begins with an idiotic discussion on choice of craft where he totally maligns canoes and canoeists, explaining that they should stay on lakes, that the ultimate rapids for an expert open canoeist would be trivial for a novice kayaker. Plastic boats and competent whitewater open canoeists were prevalent on eastern rivers by the time Lito's book went to press. As an expert boater (kayaker) who describes eastern rivers in his book, he should have known better. Anyway, this book contains 329 pages of valuable boating information. Kayak and rafting equipment is discussed, as well as aspects of river safety, trip planning, notable U.S. rivers, etc. But the emphasis of the book is some excellent text on what it's like to be a solo boater at each stage of your development from beginner through advanced intermediate. The discussions of technique are good, but he also presents situations that will arise on the river and lets you know what to expect from them. This book does not contain diagrams or photos of rapids or much about reading water. Canoeists can skip some of the text that is particular to kayaking, but most of the book applies to all hard boating. This is a book worth owning.

*Whitewater Handbook* by John T. Urban, revised by Walley Williams III, 1981. This book is the standout in its explanations of

paddling strokes for open canoeists, C-1ers and kayakers. There are almost 100 pages of detailed stroke explanations with accompanying diagrams. The whitewater river running text is also very detailed. The sections on river safety and whitewater equipment are better than average. One caution though, this book is written for an audience that either has a lot of flatwater experience or has paddled a couple of quickwater runs already. Some of the explanations may be a little obscure for the beginning boater. Still, this is the best of the books to own if you want to improve your whitewater understanding or to have a book to lend to friends.

*Sports Illustrated Canoeing*, by Dave Harrison, 1981. The topics covered include the usual (strokes, river navigation, equipment, river safety), as well as competitive racing, river tripping and river camping. The whitewater strokes section is written so a beginning boater can follow, with good diagrams and photos. Tandem sequences of strokes for ferrying and eddy turns are included. Some of the explanations are written in terms of paddling a C-1, but they are understandable in terms of open boats. I'd recommend checking this book out from the library before deciding to buy it.

*Whitewater Canoeing*, by William O. Sandreuter, 1976. There are only two redeeming features about this book. It is the only one that really addresses river reading, or what makes whitewater look and flow the way it does. Photographs help to make this section fairly understandable. It also has a great horror story relating to a waterfall that really drives home the need to collect advance information about a river and to scout rapids that are either unfamiliar or that you are running at a much different flow level than before. Like the first book, it describes what it is like to experience whitewater, and therefore complements the books that are heavy on technique. On the down side, neither the stroke names nor the river rapid ranking system are consistent with accepted nomenclature. Discussion of whitewater technique is extremely incomplete. This book should be borrowed from the library rather than purchased.

## FROM THE **SKI TOURING DIRECTOR**

by Anna Cordes

### **Introducing your ski touring and snowshoe committee**

The ski touring/snowshoe committee has faith in the coming snow. When a member of the ski committee calls and asks you to lead a tour, just say yes. It can easily take 50 calls a month to plan a complete schedule. If you would like to lead your favorite tour then call one of the following people with your ideas and requests:

To volunteer for snowshoe tours and winter hiking call **Doug Stark** (277-8538) or **Norm Pobanz** (266-3703) anytime throughout the season.

For ski tours, winter camping, and other activities call: **Ellie Ienatsch** at 272-2426 to volunteer for activities from Dec.10 - Jan 1; **Ross McIntyre** or **Katherine Muhlhausen** at 466-7749 to volunteer for activities from Jan 14 - Feb 5; **John Kortbawi** at 485-7916 to volunteer for activities from Feb 11 - Mar 5; **Anna Cordes** at 467-9430 to volunteer for activities from Mar 11 - April 9th.

Many thanks to **Jane Kelley** for organizing the November schedule!

### **Special Get Ready to Ski Offer**

Now is a good time to get in shape for skiing — in case hiking up and down hills all summer has not helped. The Salt Lake Fitness Center is offering a 3-month membership which includes aerobics and weights as a special incentive for you to get in shape for skiing. This offer is good

until December 31st. If you are interested, you can show your WMC membership card to Mike Carver or Andi Bettilyon and they will get you set up with this special membership. The cost is a \$10.00 initiation fee and \$28/month for 3 months. If you want to continue your membership then you will only have to pay the cost for a new membership card and \$30.00/month.

The Fitness Center is located at 230 South 500 East. They do not have a "ski conditioning class" but instead suggest the following: Combo Class, Flexibility, Power Tone, Weights, or for those of you with sensitive knees, Low Impact Aerobics.

### **Avalanche Classes**

An avalanche class will be held in January. Watch the Rambler for date and time of this one-day class which is recommended for all cross-country skiers. The class is designed for persons who have no prior knowledge of avalanches.

An extensive professional avalanche course is recommended for skiers participating in and leading MSD tours. John Kortbawi would like to organize a professional course but he needs to know how many people are interested. If you are interested in one of these courses, call John Kortbawi now (485-7916).

## **ALASKA AVALANCHE SCHOOL**

### **JAN 20-22**

Doug Fessler of the Alaska Avalanche School will be conducting a professional avalanche course at the WMC Lodge. Focus will be on backcountry groups, route finding methods, etc. Contact John Kortbawi at 485-7916 for details and to register.

# WMC CHIC



COLORS: Red or White ink on:

- |                |                  |
|----------------|------------------|
| * White        | * Island Green   |
| * Yellow       | Light Blue       |
| Orange         | * Mid Blue       |
| * Red          | * Royal Blue     |
| * Cardinal Red | * Navy Blue      |
| Maroon         | Sand             |
| * Pink         | * Silver         |
| * Raspberry    | Grey             |
| Lavender       | Brown            |
| Periwinkle     | Black            |
| * Purple       | * Ash Grey       |
| * Turquoise    | * Sea Mist Green |

\* Sweat shirt colors

Tee shirts available in all colors  
except ash grey

## PRICES:

Tee shirts \$10  
Sweat shirts \$22  
Add 10% for shipping.

## SIZES:

	<u>adults</u>	<u>kids</u>
XS		2-4
S	34-36	6-8
M	38-40	10-12
L	42-44	14-16
XL	46	

XXL Tee only in Red, Silver & Lt blue

High quality Russell shirts 50/50 cotton/poly

## HOW TO ORDER:

One order will be placed Monday Nov 21, 1988. Send item, quantity, size, color/ink color, and alternate color/ink color, with check made out to:

C. L. DENTON  
2666 N. 400 E.  
North Ogden  
UT 84414

Expect to mail by  
Dec 5, 1988

## WMC TEE OR SWEAT SHIRT

QUESTIONS? Call:

1-863-2628 days  
1-782-5514 eves

CELEBRATE THE HOLIDAYS WITH A WMC TEE OR SWEAT SHIRT

ALL PROFITS GO TO THE WMC LODGE FUND

THANKS TO ALL WHO ORDERED SHIRTS LAST JULY! PROFIT TO WMC WAS \$114.

A SPECIAL THANKS TO MARGIE DENTON WHO ORGANIZED THE WMC SHIRT SALE  
FUNDRAISER & TO GEORGE YURICH FOR THE LOGO DESIGN

FROM THE



## INFORMATION DIRECTOR

by Randy Klein for Linda Wilcox

The use of the term "Jordan River State Park" in a sentence will often evoke responses like: "Where's that?" or "I'd never go down there, isn't the Jordan River just an open sewer?" Well, the water quality in the Jordan River is not all that bad, and is pretty good when you get upstream (south) of about 2100 South. The scenic quality ranges from fair to good at present, but State and private efforts are currently underway to address and improve the scenic and recreational values within the current Jordan River Parkway (about 2100 South to 1300 North), and beyond. Current developments along the Jordan River include canoe docks, the International Peace Gardens, a jogging and exercise course, a wheelchair exercise course, a golf course, city parks, etc.

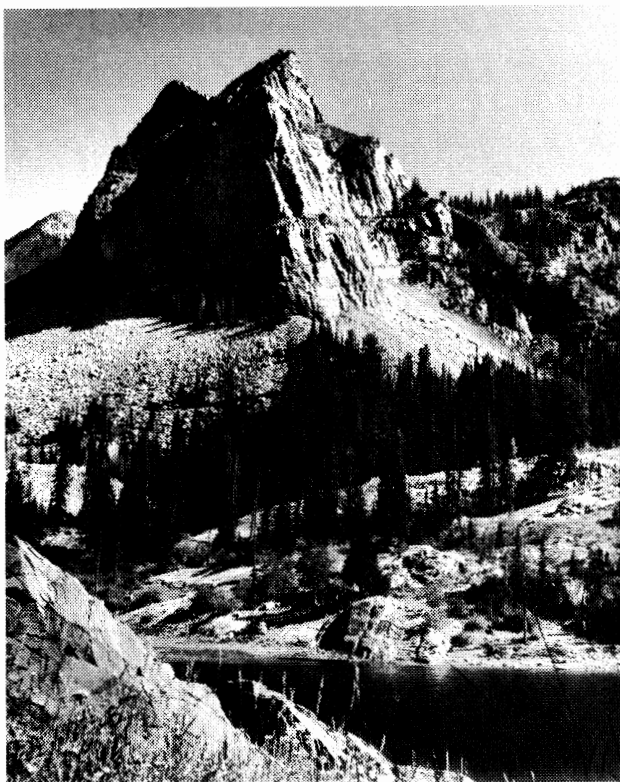
There are plans to expand the Parkway hiking/biking trail system to the south, and the former president of the Provo-Jordan River Parkway Foundation envisions a 130 mile Parkway from the Jordanelle Dam through Provo and Utah Lake to North Salt Lake.

Ideas for future improvements to the Parkway range from an arboretum to equestrian trails to a riverside shopping mall. Flatwater boating opportunities exist and whitewater boaters would like to see a few surfing waves and playspots constructed south of the narrows for practice during spring runoff.

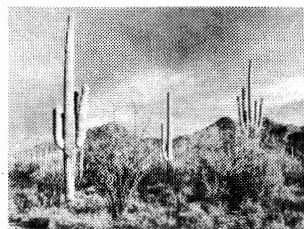
The current efforts on expanding and improving the Jordan River Parkway are being spearheaded by the Salt Lake Regional Trails Council. Various private citizens, citizens groups and Jordan River State Park personnel will be attending meetings to develop Parkway plans, arrange volunteer work days, and decide how to spend available dollars. The Mountain Club, through Randy Klein (265-2843), intends to have a presence at these meetings. Interested Club members may contact him or Norm Sims with the Trails Council (942-2430). Trails Council meetings are held the third Monday of each month at 4 pm in room N1101 of the new Salt Lake County Government Center. If someone has the time and interest to become the WMC representative at these meetings, please call Randy.

---

**LISTEN TO THE WMC RADIO SPOTS**  
**KRCL 91 FM, 7:00 AM THURSDAY MORNINGS**



**WILD COUNTRY CARDS** - Four different scenes in packages of 12, in color, sepia, or black & white. Correspondence cards are left blank inside for personal messages. Holiday cards contain the message "Wishing you a holiday season filled with beauty, peace, and love." Use the order form to order your cards.



**DISPLAY PHOTOGRAPHS** - Images Unlimited also sells original photographs custom-framed or ready for personal framing. Call for details.

## WILD COUNTRY CARDS

<b>ORDERED BY</b>
Name:
Address:
Phone:

<b>DELIVERY METHOD</b>
<input type="radio"/> I will pick up at Images Unlimited
<input type="radio"/> Please mail cards to me
<input type="radio"/> Group delivery (large orders only!)

Item	How Many	Price	Total
Box of 12 Black & White Correspondence cards		\$11.98	
Box of 12 Sepia Correspondence cards		\$11.98	
Box of 12 Color Correspondence cards		\$11.98	
Box of 12 Black & White Holiday cards		\$12.98	
Box of 12 Sepia Holiday cards		\$12.98	
Box of 12 Color Holiday cards		\$12.98	
Shipping: \$.50 per box; \$2.00 for 4 or more boxes			
Utah residents add 6 1/4% sales tax			
TOTAL			

Send order form & check payable to Images Unlimited to:  
**IMAGES UNLIMITED**  
 Jack & Eva McLellan  
 3457 South 100 East  
 Bountiful, Utah, 84010

QUESTIONS? Call 295-9741

**IMAGES UNLIMITED WILL DONATE \$2.00 TO THE WMC CONSERVATION FUND FOR EACH PACKAGE OF WILD COUNTRY CARDS SOLD**





# CONSERVATION NOTES

by Chris Billoft and Mary Fleming

## County Commission Candidates Take a Stand on Master Plan Issues

The WMC does not endorse political candidates. However, an issue of significant environmental concern, the Canyons Master Plan, will be impacted by upcoming elections for County Commission. In order to present information to the Club membership regarding the stand each candidate takes on this important topic, the Conservation Co-directors collected responses to the following questions. The candidates' responses appear verbatim.

There are two separate races. Running for 4 year term are Commissioner Mike Stewart (R), incumbent, and Jim Bradley (D). Running for 2 year term are Mayor Dale Gardiner, (D), Riverton, and Tom Shimizu (R). Vote for one in each race. Please consider their responses as you make your voting decisions.

### VOTE NOVEMBER 8.

#### 1. What underlying principles would you use to resolve conflicts between user groups?

Mr. Stewart: Fairness, balance, protection of the environment, suitability of uses for specific areas. In general I would give higher priority to dispersed and non-motorized recreation uses than motorized recreation.

Mr. Bradley: Governments must be consistent and clear in their actions and decision making. :public policy reflects the principles and values of our public leaders. Conflict resolution between user groups and land uses should be based on consistent public policy. I would seek to

establish a County policy based on the following principles:

Unique resources must be protected from irreversible change. From this underlying principle, one could establish a County land use policy which stated: It is the policy of S L County to protect its unique physical resources from degradation or from activities and development which would change the complexion or historical use of that physical resource. From this or a similar statement, County planners and leaders could establish a decision making process based on a fundamental principle. If decisions are not based on policy or principle, government cannot justify its actions and decision making becomes capricious.

Mr. Gardiner: 1. the first principle is to protect and conserve the canyons, and our water quality. 2. The second principle would be to follow a master plan. 3. The third principle would be to support multiple uses so long as principle 1 and 2 are not violated. If the uses compete with one another, I would support the use that is most compatible with principle 1 and 2.

Mr. Shimizu: A sensitivity to the environment and preserving the beauty of the canyons are principles to apply when developments are considered. Back country skier and hiker access should be maintained and historic trailheads should be preserved as much as possible. Prudent development for both visitors and local canyon users can be provided by working together.

#### 2. What legal standing and status will the Canyons Master Plan have under your administration?

Mr. Stewart: Once it is formally adopted by the County Commission it will not be able to be changed except by a formal amendment process. There would be no on-the-spot changes from the plan.



Mr. Bradley: The Master Plan must be the tool or resource against which any development is measured. The Master Plan is a statement of collective ideas and compromise and is the statement of the people through the public hearing process.

While I am not aware of a potential legal standing beyond the processes currently in effect to amend master plans, I would favor reevaluation and strengthening ordinances which increase the integrity of the process.

Mr. Gardiner: I propose that it have the force of law; that projects not be approved that violate the Master Plan; and that we quit looking for exceptions to justify Master Plan's violations.

Mr. Shimizu: As the county is administered by 3 commissioners, there may be some diversity in how the plan may be applied. However, the Master Plan should be adhered to unless there is a compelling reason to modify it. In most cases, there should not be any changes. Other jurisdictions (S L City, Forest Service, etc.) will also be involved. Legal standing and status will be as allowed by code.

**3. Do you believe that the construction of a Ski Interconnect from Park City to Snowbird is in the best interest of Salt Lake County residents? YES\_\_\_ NO\_\_\_**

Mr. Stewart: I am not certain of the necessity or desirability of a chairlift type of interconnect system.

Mr. Bradley: No. The concept of Ski Interconnect is not in the interest of S L County residents. The economic benefits, if any, from such a system would be realized in large part by Summit County but the management and degradation problems would remain the responsibility of S L County. Additionally, the target user population would be nonresident skiers, not the local public.

Mr. Gardiner: No. More importantly, I do not believe it is in the interest of the canyons.

Mr. Shimizu: Yes. It is dependent upon the type of interconnect or mode of transporting that is finally proposed. A prudent system moving a

number of groups rapidly from place to place may be all right if proper environmental needs are addressed.

**4. Should Salt Lake County encourage improved existing mass transit, including stops for dispersed recreation users? YES\_\_\_ NO\_\_\_**

Mr. Stewart: Yes. Within limits, increased availability of mass transit or shuttle options for dispersed recreation users can lessen the pressures of having too many motorized vehicles in the canyons.

Mr. Bradley: Yes. S L County should encourage the use of existing mass transit and we should increase the number of pickup and dropoff locations for different user groups.

Mr. Gardiner: Yes. The idea is to allow practice uses of the canyons while minimizing damage.

Mr. Shimizu: Yes. Group travel and mass transit should always be encouraged to alleviate as much traffic up the canyons as possible.

**5. Should Salt Lake County encourage development of commercial overnight lodging at ski resorts in Big and/or Little Cottonwood Canyon? YES\_\_\_ NO\_\_\_**

Mr. Stewart: S L County should not take a role in encouraging increased development of this sort. We are probably approaching the limits of what can be accommodated in this area, and each proposal would have to be carefully assessed on a case-by-case basis.

Mr. Bradley: Development policies should discourage increased overnight lodging in Big and Little Cottonwood Canyons. Consequently, transportation becomes a key issue.

Mr. Gardiner: Yes. To a limited extent. I believe the Solitude Development is a worthwhile project. Some limited expansion of the other resorts is feasible.

Mr. Shimizu: Yes. Most development proposals come from private sector developers and a limited number of commercial lodging would not impact the canyons if wisely planned.

**6. Should Salt Lake County encourage construction of day use facilities (as opposed to overnight lodging) at ski resorts in Big and/or Little Cottonwood Canyon? YES\_\_\_\_\_ NO\_\_\_\_\_**

Mr. Stewart: Again, it is not the role of the County to encourage a particular type of development. Personally, I would find day-use development more palatable than extensive additions of overnight lodging. Some limited overnight lodging may be feasible.

Mr. Bradley: Yes. S L County should encourage the day use facilities for several reasons. First, day use facilities would preclude the need for increased lodging development. Secondly, day use facilities accommodate local residents' needs; and thirdly, it increases downtown use.

Mr. Gardiner: Yes.

Mr. Shimizu: Yes. No. Both can be compatible if well planned.

**7. Do you approve of development of any part of White Pine Canyon for alpine ski use? YES\_\_\_ NO\_\_\_**

Mr. Stewart: No. I would prefer that this area be preserved for dispersed recreation use.

Mr. Bradley: No. White Pine Canyon should not be developed for alpine skiing.

Mr. Gardiner: No.

Mr. Shimizu: I will not be able to comment until I study the proposal more fully.

**8. Should Salt Lake County allow expansion of ski resort beyond their currently permitted boundaries? YES NO**

Mr. Stewart: No. While conditions may change at some time to cause us to re-assess the current boundaries, I see no need for expansion beyond those boundaries based on present information and projections.

Mr. Bradley: No. The 1985 Forest Service Plan is sufficient in its position on resort terrain boundaries.

Mr. Gardiner: No. For the most part, No, there may be some limited project that I would consider. I wouldn't entirely rule out possible exceptions.

Mr. Shimizu: Yes. To a limited extent. The principles of item 1 need to be adhered to.

**9. Should Salt Lake County require developers of private land to provide access to public lands adjacent to their property as a condition of approval of a building permit? YES\_\_\_\_\_ NO\_\_\_\_\_**

Mr. Stewart: Yes. This would be a means of assuring access that otherwise can be threatened by additional development.

Mr. Bradley: Yes. S L County should require that developers of land provide access to public lands as a condition of receiving building permits.

Mr. Gardiner: Yes.

Mr. Shimizu: Yes. No. Wherever possible, but not in all cases.

---

## "HEALING OF NATIONS AND PEOPLES"

Free public lecture by

NORMAN COUSINS

Former editor, *Saturday Review*  
Author, *Anatomy of an Illness, Pathology of Power*

Monday, December 5, 1988  
Highland High School Auditorium  
2166 S. 1700 East  
7:30 pm

---

# THE CANYON MASTER PLAN

by Ann Wechsler

The preliminary Canyon Master Plan surfaced recently. To the delight of conservationists, its recommendations are in keeping with the Green Scenario, engineered primarily by Michael Budig (Co-chair of SAVE OUR CANYONS) as a counter plan to the not-so-green scenarios served up to us this summer.

Many of you filled out lengthy response forms, wrote letters, spoke up at the public hearings, and otherwise lent your support to the promotion of a plan that would protect the canyons from inappropriate and unwarranted development in the next 20 years. Your words and efforts on behalf of White Pine Canyon and in defiance of a chairlift Interconnect have not gone unheeded. The Citizens' Advisory Committee supports the concept, suggested in the plan, of retaining White Pine Canyon in its natural state for multiple use. Guardsman's Pass was deemed not suitable for paving, but a mountainland transportation system, linked to valley transportation, will get further study. Ski expansion is to be held to the boundaries defined in the 1985 Forest Service Resource and Management Plan. It all seems too good to be true. And maybe it is.

The Citizens' Advisory Committee has held several meetings to review the plan. A committee of 25 people representing many diverse interests can be expected to monkey with the language. This preliminary plan was only intended to be a draft. But with vigilance and your continued support, the original intent and direction of the plan can be preserved. Advocates of dispersed recreation may have a continued stake in the Wasatch Front Canyons and not be banished to the Stansbury Range for suitable terrain.

The grey area of the plan is transportation. After all the "shoulds" and "oughts" are digested by the reader, hard reality sets in. The goal stated in the plan is to substantially reduce private vehicular traffic in the canyons. Is this feasible? Any ski resort undergoing or planning expansion is charged with the burden of mitigating traffic on the canyon road. Is

this fair, when the canyon's users are many, especially in the summer? Which entity will implement a shuttle service in the summer months that stops at all the trailheads? There are many questions that should be addressed by the public in upcoming hearings. Some solutions will be presented in the implementation hearings. Some solutions will be presented in the implementation section of the plan which has not been made available to the Committee at the time of this reporting.

Copies of the Preliminary Plan (with appendices and an implementation section) will be available to the public by November 10th, at the County Government Center, 2100 South State, Room N3700. A public hearing on the Preliminary Plan is scheduled for November 22 at Olympus High School, 4055 South, 2300 East at 7:00 pm.

Your views on the plan in general and, specifically, on the more controversial issues such as White Pine Canyon, transportation, and continued watershed protection, are sorely needed. The Planning Commission will then review the public comments and start the formal adoption process which involves a final hearing before the County Commissioners. This would probably be held in March, that is, if all this planning effort doesn't go down the sewer (that, too, is recommended for Big Cottonwood Canyon) with the tax initiatives. Good luck to all of us, and especially the canyons.

**Mark Holland**  
Financial Advisor

2835 East 3300 South  
Salt Lake City, Utah 84109  
Telephone (801) 486-4431

Meeting the Needs of the  
SOCIALY CONSCIOUS INVESTOR

  
**MountainWest Savings**

# TRIP · TALK

## AUTUMN GOURMET HIKE

Oct 2, 1988  
by Eldon Madsen

It is often said, the inability to resist the temptation for overeating is a defect of character. On October 2, twenty plus WMC enthusiasts assembled for the Autumn Gourmet Hike to test their will power. The late starting time of 10:30 am was much heralded by all as a significant departure from their regular hiking schedules and that being awake with eyes wide open would be a great assist in reviewing the delicacies soon to be spread before them in Green's Basin.

Ann Cheves, the leader of the expedition, wasted no time in getting the group started up the mountain from the Spruces in Big Cottonwood Canyon. Fresh air and spectacular fall colors, especially the golden yellow aspens bursting through the dark green stands of pine, graced the group as we hiked up to our destination. Although the weather was sunny and warm without a cloud in sight, the trail became slippery as drooling hikers in front made it tough going for those at the back. At last everyone persevered and soon Green's Basin was filled with the activity of hungry hikers emptying the contents of their packs.

The atmosphere became festive as the smorgasbord was assembled. First, the ever popular Mulato Cookies appeared, then donut holes, next a sumptuous assortment of cheeses, crackers, pickles, oysters (not the mountain variety), clams, fresh fruit, broccoli, and various accompanying dips all indicating the local Smith's Food King was going to have a profitable fourth quarter. The best was yet to come. The anxious mood dissolved into sunny smiles as homemade cheesecake, brownies,

garbanzo bean salad and other palate tempting dishes from the kitchens of club members received a toast with beer, wine, diet coke and the beverage of choice - water from the Wasatch Front.

Everyone provided conversation (between mouthfuls) covering topics of interest. Soon the group moved to an exposed grassy area to bask in the sun and the conversation focused on figuring out a way to dehydrate beer. It was determined that our company had several consumers who were waiting for someone to come forward with the process. Speaking for us all, new friends were made, old friends became better friends, and everyone had plenty of food without a defective character in the bunch. It doesn't get much better than that. If you think it can - show up for the Autumn Gourmet Hike to be held again next year.

Participants: Diane Little, Leslie Woods, Bill Sanders, Barbara Ainslie, Linda Hatcher, Bill Goldsmith, Debbie Mills, Gary Whitney, Kriste Green, Bob Sherer, Eldon Madsen, Sue deVall, Beverly Lujan, Floyd Meads, Robert Turner, John Shavers, Hasan Tavig, Elizabeth Tysak, Ann Cheves (leader).

## ORDERVILLE CANYON

October 8, 1988  
by Noel de Nevers

Columbus Day weekend is the traditional time to visit the canyons of Zion because the weather is normally good, the fall colors are great, and there is no threat of flash floods. So 11 intrepid souls gathered at the Temple of Sinawava at 8 am Saturday October 8, to meet the car shuttler from Springdale who would take us to the head of Orderville Canyon. The size of the group was less than originally announced in the *Rambler* because the park ranger at Zion read the *Rambler* and called to read the leader the rules: permits are now required for Orderville, and the maximum allowed is 12, not the 15 announced in the *Rambler*.

When we had waited half an hour, the leader drove to Zion Lodge, called the car shuttler, found that he was waiting for us at home, and got that fixed. So we left at 9 instead of the planned 8. Then the shuttle driver got lost, losing another half hour, so we started walking at 10:30 instead of the planned 9.

From there it is 9.3 miles to the main Virgin River. The scenery is dull at first, then becomes good, and toward the end of the canyon becomes amazing. There are several obstacles where ropes were helpful, but the two pools which had to be swum on previous trips were only knee deep, so we never got wet more than a few inches above the knee.

At about 5 we met a lone hiker coming from below who was aghast that a bunch of old people like us would try this trip, and be so late in the day. He had no concern for his own safety, but he was certain that we would never make it out to our cars by daylight. We did, with about 3/4 hour to spare. (We all had flashlights in case we needed them at the end.) The next day at breakfast we were visited by the ranger, whom the lone hiker had visited to warn that we were sure to need help. The ranger said that when he saw the permit was for the WMC he wasn't worried, but he came to check on us nonetheless.

Sunday we walked up the East Rim Trail to Observation Point and revelled in the great weather and super scenery.

Participants: Joan and Bill Coles, Klancy, Clark and Noel de Nevers, Sherm Dickman, Dave Minix, Peggy Norton, Claudia and Klaus Schmidt, and Anne Withrow.

## YELLOWSTONE BACKPACK

### WHITE CLOUD

Sept 17-21, 1988  
by Mike Budig

For obvious reasons, my Yellowstone backpack this year was not possible. In fact the backcountry in Yellowstone was entirely closed during much of the summer and fall season.

So my traditional Yellowstone trip was rerouted to the White Cloud Range in Idaho, just east of the Sawtooth Range. Participants in the outing included Oscar and Phyllis Robison, Clayton Benton, Steve Negler and Janet Friend.

We backpacked down Germania Creek then up to the Chamberlain Lakes Basin, which has a spectacular backdrop formed by Castle Peak. However, the short days of September conspired with the backcountry fire prohibition (due to the drought) and relentlessly chilling wind to draw us to hibernate in our tents for a good part of the day.

But we were well-prepared for adverse weather and spirits remained high. When the snow started, we just extended happy hour. After three to four inches fell, we decided to shorten the trip by one day.

All in all, it was a pleasant trip due to the very cordial group. ...Still, it wasn't Yellowstone. Fortunately, the area I'd planned to backpack in Yellowstone remained unscathed by this year's fires. So, I'll return to lead another Wasatch Mountain Club trip there ... next year.

## CAPITOL REEF CAR CAMP

Sept 24-25, 1988  
by Leslie Woods

These were true mountian clubbers that started the trip off by staying at motels or in cars at various locations near Capitol Reef. Others had gourmet breakfasts in nearby cafes. In this group of ten, three actually pitched a tent and prepared breakfast with a backpacking stove.

After meeting at the Visitor's Center on Saturday morning and formulating an agenda we headed up Burro Wash. When we arrived at the narrows, which was partially filled with water, Barb P. and Gordon continued on in chest deep water, but the rest backtracked and went up the other fork. Later Barb P. informed the group that Gordon permitted her to "walk all over him" which he stated was a very effective climbing technique. As the majority of the group headed up the other fork, they were forced to bridge walk, and two hearty souls - Louise and Dennis - still unchallenged, proceeded to shimmy up an extremely narrow passage in which Dennis almost left his shorts in the clutches of the rock.

After a jovial happy "hour" we proceeded to fix our dinner and much to our surprise the guests arrived early, in their black and white attire. Being the gracious hosts and hostesses we were, we allowed them to have a taste from our menu, but they became greedy and attempted to take Barb P.'s stuff sack which contained malted milk balls. We drew the line and tried to scare our uninvited guests off. Amazingly enought they did not want to leave so they joined us around the campfire. Later during the night they came back again and prowled around Dennis who was sleeping under the stars, but he quickly opted to seek shelter in his tent, even though there was a picturesque full moon.

On Sunday we capped the trip off by hiking up to Hickman (Hickey) Bridge, where several of us looked through Clark's 4 X 5 camera with his black cloth draped over our heads.

We then continued on to the Rim Overlook which allowed us a spectacular view of Capitol Reef. Trip participants were: Katy and Clark Partridge, Bill Sanders, Dennis Tolboe, Gordon Swenson, Nancy Ivy, Louise Rausch, Barb Ainslie, Barb Pollyea, and Leslie Woods.

## LETTER FROM PERU

Dear Friends:

As many of you know I went to Peru this September. We hiked the Inca Trail into Machu Pichu. It was beautiful, wonderful, fantastic, etc, etc, etc.

I am writing to thank all of you who helped me train for this wonderful trip. Thanks to the support and encouragement of my fellow Wasatch Mountain Club hikers, the trip was much more enjoyable. In fact the whole group wanted me to thank the members who gave me little tips that I passed on. They especially wanted me to thank Irene Schilling who taught be how to pace myself on the hike she led up to Reynold's Peak. Because I learned not to stop, just keep slowing down from Irene, I was made leader on several of the steep inclines. They called me the one with the magical pace. In fact one day we beat the cooks to our lunch spot because of our nice, slow steady pace. We hiked for five days and four nights and I enjoyed every step.

Peru is a very magical, peaceful, beautiful country and I look forward to returning. I would very much like to take a group from here if there is interest. Maybe next September or the following April. Please let me know if the Club would be interested in supporting such a trip.

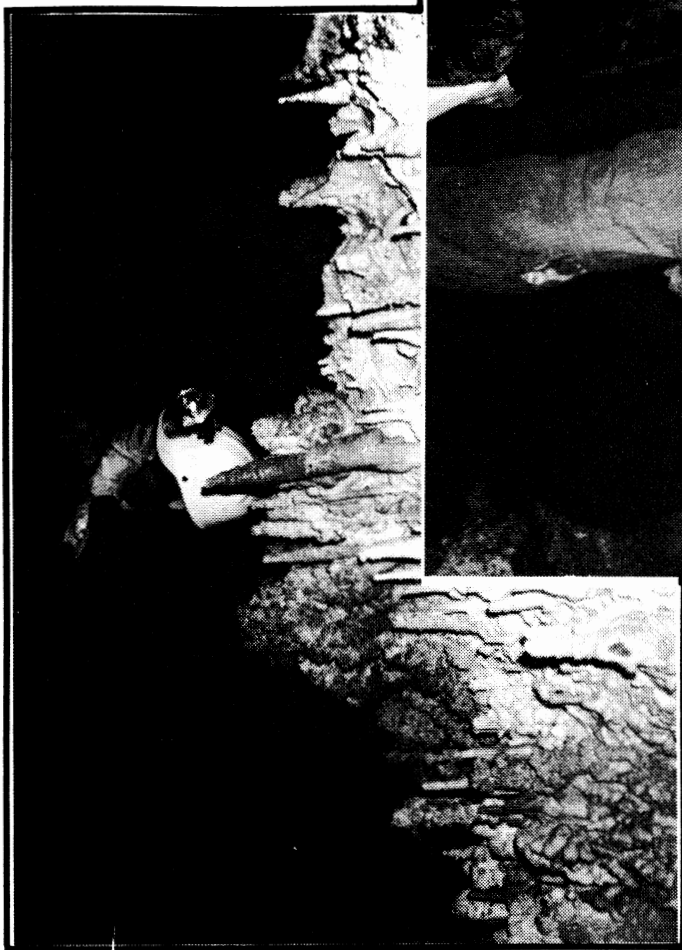
Again thanks to all the members who hiked with me this summer.

Very Truly Yours,

Peggy Washburn



WHITEROCKS CAVE TRIP: Sept 24. Trip led by Dale Green. Photos by Elissa Stevens.



## AMERICAN FORK TWINS

July 30, 1988  
by George Westbrook

The day started off with an early meeting at 7:30, as this seems to weed out all but the truly enthusiastic hikers.

With a shuttle from 4500 South and I-15 to Silver Lake Reservoir, we were hiking the jeep road by 8:45. The morning was clear and cool, which made the hiking very pleasant. The motorized vehicles were still sleeping in, so the road was quiet. Two hours and two water stops later put us on the upper part of the road, which we then left to follow a minor ridge. By this time, some clouds had formed that kept the sun from baking us to crisps. At a few minutes before noon we were on the main ridge looking at the Twins.

Then it happened!!! Our quiet mountain hike was interrupted by helicopters ferrying large groups of people from the top of Snowbird's tram to a mountain top southeast of the Twins. There seemed to be a series of large tents and tables where the helicopters were landing. The speculations ran wild among us, one of the more smarmy suggestions being that Snowbird was hyping its version of the Canyon Master Plan. We managed to find out later that this wasn't too far from the truth: an airborne version of the stereotyped \$500 a plate luncheon.

Well, a bolt of lightning struck suspiciously close to this scene, and we headed down post haste. We got a little hail, rain, and some wind. This made the hike down cooler than normal, which was greatly appreciated by all participants: Cassie Badowski, Donn Seeley, David Sterner, John Van Hook, George Westbrook, and leaders Dennis, Karin and (police dog) Falstaff Caldwell.

## CLASSIFIED ADS

### AD POLICY

Members may place classified ads for used sports equipment free of charge. Other classified ads require a \$5.00 donation to the WMC for up to 20 words with \$.20 per word over 20. Words of 2 letters or less will not count as a word.

Send your ad (with a check enclosed if it is not a used sports equipment ad) before the 13th of the month to Sue DeVall, 11730 South 700 West, Sandy UT 84070 or call Sue at 572-3294 for information.

The Rambler cannot accept any ad that is inconsistent with the purposes of the WMC, or that offends the sensibilities of club members.

### SEWING REPAIRS

SEWING REPAIRS on outdoor equipment & clothing. Call 572-3294 or ask for Sue at REI (486-2100).

### USED EQUIPMENT

KUWAHARA MOUNTAIN BIKE, 18", \$350. JANSPOUT EXTERNAL FRAME PACK, \$30. Jim Elder 943-3321.

CENTURION 10 Speed BIKE. Excellent condition, must see & ride to appreciate. 58 cm. Gears: front 40-52, rear 13-24. New cables. Call Ken Gardner 486-4130.

CLIMBING GEAR. Various hexentrics, stoppers, older style pitons, carabiners, all sizes, \$1.00 each. John 943-5230.

SIERRA DESIGNS 4 SEASON TENT. \$50. Call John at 943-5230.

KAYAK Prijon T-canyon. 1 year old. \$450. New cost \$630. Good play boat. Strongest kayak built. 776-8286 (Clearfield)

RACING BICYCLE, Novaro Team. Prestige tubes, Shimano 600 sis Campy wheels, Cinelli bars & stem, less than 500 miles. Tad 272-2661.

OUTDOOR 3 Ft Yamaha PA speakers. \$100. Tad 272-2661.

### WMC TEE SHIRTS

Due to order errors I have 5 NEW WMC TEE SHIRTS for sale, \$10 each. Profit goes to Club. Medium, white ink on gold, red, periwinkle. Large, white ink on medium blue, turquoise. Call Chuck Denton 782-5514.

## NO EXPERIENCE NECESSARY!

If you would enjoy helping out with the *Rambler* - paste up, errands, typing, artwork - please contact David Vickery at 583-7064.



## NOVEMBER SKY CALENDAR

by Ben Everitt

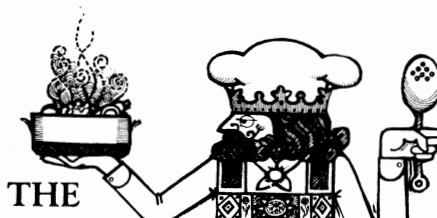
MOON			
Last Quarter	Nov 1	Nov 30	
New Moon	Nov 9	Dec 8	
First Quarter	Nov 16	Dec 15	
Full Moon	Nov 23	Dec 22	

MOONRISE			
Saturday	Greenwich	Local Time	
Nov 5	2:28	3:00	am
Nov 12	9:53	10:30	am
Nov 19	14:04	2:30	pm
Nov 26	19:00	7:30	pm
Dec 3	1:16	1:30	am
Dec 10	8:41	9:00	am
Dec 17	12:31	1:00	pm
Dec 24	17:48	6:00	pm
Dec 31	0:03	12:30	am

The Southern Cross really is there, folks, lighting the winter sky over Australia, but that's not half of it. Just to travel south beyond the edge of the familiar sky; to look back and see constant Polaris slip beneath the ocean horizon and Orion standing on his head far to the north, that makes a trip to the Southern Hemisphere entirely worth while.

And jet lag is nothing compared to trying to reprogram the internal navigation system for the sun going counterclockwise around the sky. It is easy to intellectualize being on the other side of a rotating sphere, but, getting off a bus in Sydney, the feet still went east when the brain told them to go west. This desert rat, who grew up navigating by the sun and stars, finally had to hail a cab to go ten blocks from Kings Cross to Darling Harbour.

Seen from either hemisphere, JUPITER is at opposition, bright in the sky all night, on Nov 23. It is in the constellation Taurus, about halfway between the Pleides and the "V" which is the Bull's head. MARS is to the west, and VENUS is to the east, lighting the morning sky before dawn. On November 30, at about 4 in the morning, the last quarter moon passes very close to the star Regulus (the bright star in Leo), and may actually pass in front of it from our viewpoint in Utah.



## GRUBBY GOURMET

by Roseann Woodward

### CARROT CHEESE SPREAD

For your thanksgiving pleasure, Grubby offers a pre-pig-out appetite supresser. Believe it or not, they have a carrot festival in Holtville, CA. Some people will do anything for a party!

- 1 three ounce package cream cheese
- 1/3 cup grated raw carrots
- 1 tablespoon chopped chives
- 4 drops Worcestershire
- Grated carrots and parsley for garnish

Soften Cream cheese. Add remaining ingredients and mix well. Spread on crackers.

### OCTOBER'S ANSWER

NOTE: Apteryx spent last month in Aotearoa and was not able to create a puzzle for this month. A new puzzle will appear next month.



U.S. Postal Service STATEMENT OF OWNERSHIP, MANAGEMENT AND CIRCULATION <small>Required by 39 U.S.C. 3685</small>		
1A. TITLE OF PUBLICATION <i>The Rambler</i>		1B. PUBLICATION NO. <i>053410</i>
		2. DATE OF FILING <i>Oct 1, 1988</i>
3. FREQUENCY OF ISSUE <i>Monthly</i>	3A. NO. OF ISSUES PUBLISHED ANNUALLY <i>12</i>	3B. ANNUAL SUBSCRIPTION PRICE <i>\$12.00</i>
4. COMPLETE MAILING ADDRESS OF KNOWN OFFICE OF PUBLICATION (Street, City, County, State and ZIP+4 Code) (Not printers) <i>The Rambler 888 South 200 East Suite 111 Salt Lake City SLCO UT 84111-4203</i>		
5. COMPLETE MAILING ADDRESS OF THE HEADQUARTERS OF GENERAL BUSINESS OFFICES OF THE PUBLISHER (Not printer) <i>Wasatch Mountain Club 888 South 200 East Suite 111 Salt Lake City SLCO UT 84111-4203</i>		
6. FULL NAMES AND COMPLETE MAILING ADDRESS OF PUBLISHER, EDITOR, AND MANAGING EDITOR (This item MUST NOT be blank)		
PUBLISHER (Name and Complete Mailing Address) <i>Wasatch Mountain Club 888 S. 200 E. Suite 111 Salt Lake City UT 84111-4203</i>		
EDITOR (Name and Complete Mailing Address) <i>David Vickery 1374 Thornton Ave. Salt Lake City UT 84105</i>		
MANAGING EDITOR (Name and Complete Mailing Address) <i>same as editor</i>		
7. OWNER (If owned by a corporation, its name and address must be stated and also immediately thereunder the names and addresses of stockholders owning or holding 1 percent or more of total amount of stock. If not owned by a corporation, the names and addresses of the individual owners must be given. If owned by a partnership or other unincorporated firm, its name and address, as well as that of each individual must be given. If the publication is published by a nonprofit organization, its name and address must be stated.) (Item must be completed.)		
FULL NAME <i>Wasatch Mountain Club</i>		COMPLETE MAILING ADDRESS <i>888 S. 200 E. #111 Salt Lake City UT 84111-4203</i>
8. KNOWN BONDHOLDERS, MORTGAGEES, AND OTHER SECURITY HOLDERS OWNING OR HOLDING 1 PERCENT OR MORE OF TOTAL AMOUNT OF BONDS, MORTGAGES OR OTHER SECURITIES (If there are none, so state)		
FULL NAME <i>NONE</i>		COMPLETE MAILING ADDRESS
9. FOR COMPLETION BY NONPROFIT ORGANIZATIONS AUTHORIZED TO MAIL AT SPECIAL RATES (Section 423.12 DMM only) The purpose, function, and nonprofit status of this organization and the exempt status for Federal income tax purposes (Check one)		
<input type="checkbox"/> (1) HAS NOT CHANGED DURING PRECEDING 12 MONTHS <input type="checkbox"/> (2) HAS CHANGED DURING PRECEDING 12 MONTHS         (If changed, publisher must submit explanation of change with this statement.)		
10. EXTENT AND NATURE OF CIRCULATION <small>(See instructions on reverse side)</small>	AVERAGE NO. COPIES EACH ISSUE DURING PRECEDING 12 MONTHS	ACTUAL NO. COPIES OF SINGLE ISSUE PUBLISHED NEAREST TO FILING DATE
A. TOTAL NO. COPIES (Net Press Run)	<i>1,370</i>	<i>1,350</i>
B. PAID AND/OR REQUESTED CIRCULATION		
1. Sales through dealers and carriers, street vendors and counter sales	<i>0</i>	<i>0</i>
2. Mail Subscription (Paid and/or requested)	<i>1,072</i>	<i>1,014</i>
C. TOTAL PAID AND/OR REQUESTED CIRCULATION <small>(Sum of 10B1 and 10B2)</small>	<i>1,072</i>	<i>1,014</i>
D. FREE DISTRIBUTION BY MAIL, CARRIER OR OTHER MEANS SAMPLES, COMPLIMENTARY, AND OTHER FREE COPIES	<i>80</i>	<i>96</i>
E. TOTAL DISTRIBUTION (Sum of C and D)	<i>1,152</i>	<i>1,110</i>
F. COPIES NOT DISTRIBUTED		
1. Office use, left over, unaccounted, spoiled after printing	<i>218</i>	<i>240</i>
2. Return from News Agents	<i>0</i>	<i>0</i>
G. TOTAL (Sum of E, F1 and 2—should equal net press run shown in A)	<i>1,370</i>	<i>1,350</i>
11. I certify that the statements made by me above are correct and complete		SIGNATURE AND TITLE OF EDITOR, PUBLISHER, BUSINESS MANAGER, OR OWNER <i>David Vickery Editor</i>

# WASATCH MOUNTAIN CLUB

## APPLICATION FOR NEW MEMBERS/REINSTATEMENT FOR PREVIOUS MEMBERS RAMBLER SUBSCRIPTION QUALIFICATION FORM

Please read carefully and fill out completely. Your signature is required.

APPLICANT'S NAMES: \_\_\_\_\_

ADDRESS: \_\_\_\_\_ CITY \_\_\_\_\_ ST \_\_\_\_\_ ZIP \_\_\_\_\_

HOME PHONE \_\_\_\_\_ DAY PHONE \_\_\_\_\_ BIRTH DATE \_\_\_\_\_

I hereby apply for ☐ NEW MEMBERSHIP ☐ STUDENT  
☐ REINSTATEMENT ☐ SINGLE membership in the WMC  
☐ COUPLE

I ☐ DO wish to receive the *Rambler* (the WMC publication). Subscription price  
☐ DO NOT is not deductible from the dues.

Enclosed is \$ \_\_\_\_\_ for one year's (Mar 1 19\_\_ to Feb 28 19\_\_) dues and application fee.  
\*\*\* Make checks payable to Wasatch Mountain Club (CHECKS ONLY) \*\*\*

Remit: \$20.00 for student membership (\$15.00 dues and \$5.00 application fee)  
\$30.00 for single membership (\$25.00 dues and \$5.00 application fee)  
\$40.00 for couple membership (\$35.00 dues and \$5.00 application fee)  
(NOTE: These rates include the \$12.00 for the *Rambler* subscription)

YOU MUST COMPLETE THE FOLLOWING FOR MEMBERSHIP CONSIDERATION  
THE ACTIVITY DATES MUST HAVE BEEN WITHIN ONE YEAR OF THIS APPLICATION  
qualifying activity \_\_\_\_\_ date \_\_\_\_\_ signature of recommending leader \_\_\_\_\_

1. \_\_\_\_\_

2. \_\_\_\_\_

I agree to abide by all the rules and regulations of the WMC. I am 18 years of age or older.

I am willing to serve the WMC in the following areas: (please check)

☐ Service Project ☐ Lodge work ☐ Conservation ☐ Rambler ☐ Thurs Night Hikes  
☐ Hike Leader ☐ Boat Leader ☐ Ski Leader ☐ Social Assist

I found out about the WMC from \_\_\_\_\_

APPLICANT'S SIGNATURE: \_\_\_\_\_

MAIL APPLICATION AND CHECK TO: MEMBERSHIP DIRECTOR  
WASATCH MOUNTAIN CLUB  
888 SOUTH 200 EAST, SUITE 111  
SALT LAKE CITY, UTAH, 84111

LEAVE BLANK

Receipt #: \_\_\_\_\_ Date Received: \_\_\_\_\_ Amount Recv'd: \_\_\_\_\_  
(or check #) (less application fee)  
Board Approval Date \_\_\_\_\_ (Rev 7/88 Pub 11/88)

IN CASE OF EMERGENCY PLEASE NOTIFY  
THE SALT LAKE COUNTY  
SHERIFF'S OFFICE AT:

**535-7055**

OR THE APPROPRIATE EMERGENCY  
AGENCY IN YOUR LOCATION.

WASATCH MOUNTAIN CLUB  
888 SOUTH 200 EAST, SUITE 111  
SALT LAKE CITY, UT 84111

COUNTY COMMISSION  
CANDIDATES  
STATE THEIR VIEWS  
SEE CONSERVATION NOTES

**11/88**

SECOND CLASS  
POSTAGE PAID  
SALT LAKE CITY, UT  
NO. 053410

COVER PHOTO: At the end of Burro Wash,  
Capitol Reef, Sept 24-25, 1988. (L to R):  
Katy Partridge, Barbara Ainslie, Leslie Woods,  
Bill Sanders, Nancy Ivy. Photo by Clark  
Partridge.