

The Rambler

WASATCH MOUNTAIN CLUB

AUGUST



VOLUME 67, NUMBER 8. AUGUST 1990

The Rambler

Pat Beard; managing editor

ADVERTISING: Jill Pointer
ART: Kate Juenger
CLASSIFIED ADS: Sue deVall
MAILING: Rose Novak and Mark McKinzie
PRODUCTION: Pat Beard, Geoff Freethey, Sandy Freethey,
Steve Krueger, Jill Pointer, Magdaline Quinlin
SKY CALENDAR: Ben Everitt
TYPING COORDINATOR: David Vickery
TYPISTS: Diane Little, Phyllis Papan, Clari Powers

THE RAMBLER (USPS 053-410) is published monthly by the WASATCH MOUNTAIN CLUB, Inc., 888 South 200 East, Suite 111, Salt Lake City, UT 84111. Telephone 363-7150. Subscription rates of \$12.00 per year are paid for by membership dues only. Second-class Postage Paid at Salt Lake City, UT.

POSTMASTER: Send address changes to THE RAMBLER Membership Director, 888 South 200 East, Suite 111, Salt Lake City UT, 84111. CHANGE OF ADDRESS: This publication is not forwarded by the Post Office. Change of address should be submitted in writing to the Membership Director, 888 South 200 East, Suite 111, Salt Lake City, Utah, 84111. All correspondence regarding the mailing of THE RAMBLER should be directed to the Membership Director at that address. Allow 45 days for address changes.

The right is reserved to edit all contributions and advertisements and to reject those that may harm the sensibilities of WMC members or defame the WMC.

Copyright 1990, Wasatch Mountain Club

RAMBLER INFORMATION

IF YOU MOVED: Please notify the WMC Membership Director, 888 South 200 East Suite 111, SLC UT 84111, of your new address.

IF YOU DID NOT RECEIVE YOUR RAMBLER: Contact the Membership Director to make sure that your address is in the Club computer correctly.

IF YOU WANT TO SUBMIT AN ARTICLE: Articles, preferably typed double spaced, must be received by 6:00 pm on the 15th of the month preceding publication. Mail or deliver to the WMC office or to the Editor. Include your name and phone number on all submissions.

IF YOU WANT TO SUBMIT A PHOTO: We welcome photos of all kinds: black & white prints, color prints, and slides. Please include captions describing when & where the photo was taken, and the names of the people in it (if you know). We will return photos if you ask us to.

DEADLINE: Submissions to THE RAMBLER must be received by 6:00 pm on the 15th of the month preceding the publication. Mail or deliver to THE RAMBLER office or to the Editor. Include name and phone # on all submissions.

THE RAMBLER

THE RAMBLER, the official publication of the Wasatch Mountain Club is published monthly by and for its members. Persons wishing to become members may receive THE RAMBLER for two months by writing the Membership Director, 888 South 200 East, Suite 111, Salt Lake City, UT, 84111 and enclosing \$3.00. Checks are to be made payable to the Wasatch Mountain Club. There is a \$10 charge for returned checks.

WMC PURPOSE

(Article II of the WMC Constitution)

The purpose shall be to promote the physical and spiritual well being of its members and others by outdoor activities; to unite the energy, interests and knowledge of students, explorers and lovers of the mountains, deserts and rivers of Utah; to collect and disseminate information regarding the Rocky Mountains in behalf of science, literature and art; to explore and picture the scenic wonders of this and surrounding states; to foster awareness of scenic beauties; and to encourage preservation of our natural areas including their plant, animal and bird life.

AUGUST 1990

TABLE OF CONTENTS

Events At A Glance	4
Activities	5
Conservation Notes	21
Lodge Director	24
Sky Calendar	24
Boating Director	25
Trip Talk	26
Classified Ads	38

COVER PHOTO: Creative glissade techniques at Mineral Fork. Photo by Mark Jones.

KIRKHAM'S.

Your Only Store When You're Heading For the Great Outdoors.



Here's a sampling of the Spring
and Summer items that we
have available for you:

OUTDOOR CLOTHING

- The North Face
- Woolrich
- Patagonia
- Royal Robbins
- Columbia
- Gramicci
- Sierra Designs
- Big Dog
- Kokatat
- Marmot
- Moonstone

FOOTWEAR

- Asolo
- Vasque
- Merrell
- Fabiano
- Hi-Tec
- Danner
- Technica
- Nike
- Pivetta
- Joseph Seibel
- Koflach
- Teva
- Birkenstock
- Timberland

SUNGLASSES

- Ski Optics
- Vaurnet
- Style Eyes
- Jones
- Ziari

PACKS

- Dana Design
- Kelty
- Lowe
- North Face
- Camp Trails
- Jansport
- M.E.I.

TENTS

- Springbar®
- Eureka
- North Face/Windy Pass

SLEEPING BAGS

- Slumberjack
- Everest Elite
- Marmot
- North Face

Kirkham's Outdoor Products

Manufacturers of quality products for the great outdoors.

• Daypacks • Fanny Packs • Tents • Gaitors • Luggage • Overmitts
All made right at our factory/store, so we're able to pass along
factory direct pricing to you.



Kirkham's
outdoor products



3125 So. State 486-4161 Mon.-Thurs.9:30-8:00, Fri. to 9:00, Sat. to 6:00

EVENTS AT A GLANCE

<u>Aug</u> 3 Uintas 8 Yellowstone	17 Yellowstone 31 Kings Peak	BACKPACKS 31 Red Castle Lake 31 Wind Rivers	<u>Sept</u> 1 Uintas	8 Capitol Reef 12 Selway
<u>Aug</u> 3 Sea To Sea 5 Smith-Morehouse 11 Deer Valley	15 Emigration Canyon 19 Tooele Valley	BIKING 25 Tour de Tummies 27 City Creek	<u>Sept</u> 1 Sherwood Hills 3 Hooper Century 7 Southern Idaho	11 City Creek 14 Duck Creek 22 Smith Morehouse
<u>Aug</u> 6 Alpine Canyon WP 7 Westwater Canyon WP	11 Alpine Family 11 Westwater	BOATING 14 Westwater WP 19 Westwater 27 Westwater WP	<u>Sept</u> 2 Westwater 8 Rescue Course 10 Westwater WP	15 Westwater 25 Westwater WP 30 Westwater
<u>Aug</u> 25 Boulder Mountain	25 Mt Timpanogos	CAR CAMPS	<u>Sept</u> 1 Cheesebox Canyon	15 Great Basin NP
<u>Aug</u> 2 Lisa Falls 9 Storm Mountain	16 Gate Buttriss 23 Lisa Falls	CLIMBING 24 Tetons 30 Storm Mountain	<u>Sept</u> 1 Wind Rivers 6 Storm Mountain	13 Gate Buttriss
<u>Aug</u> 1 Nature Hike 2 Mill Creek 3 Gobblers Knob 4 Cecret Lake 4 Emerald Lake 4 Highway Cleanup 5 Mineral Fork 5 Park City Overlook 5 Kessler Peak 5 White Pine 8 Nature Hike 9 Big Cottonwood 11 Amethyst Lake 11 Scotts Bowl	11 Alexander Basin 11 Maybird Lakes 12 Lake Solitude 12 Mt Watson 12 Little Water Peak 12 Mt Nebo 12 Silver Glance Lake 12 Hayden Peak 15 Nature Hike 16 Mill Creek 18 Catherine Pass 18 Brighton Ridge 18 Doggie Hike 18 Clayton Peak	HIKES 19 Twin Lakes 19 Days Fork 19 Lake Blanche 19 Bullion Divide 23 Big Cottonwood 25 Greens Basin 25 Red Pine Lake 25 Beartrap Fork 25 Mt Timpanogos 26 Newcomer's Hike 26 Alexander Basin 26 Mt Evergreen 30 Mill Creek	<u>Sept</u> 1 Mt Raymond 1 Albion Basin 1 Maybird Lakes 1 Clayton Peak 2 Box Elder Peak 2 Monte Cristo 2 Mt. Baldy 2 Sunset Peak 2 Willow Lake Family 3 Sundial Peak 3 Mt Aire 3 Days Fork 6 Last Thu Eve Hike 8 Lake Katherine 8 Lookout Mountain	8 White Pine 9 Lambs Canyon 9 Thaynes Peak 9 Mt Olympus 9 Circle All 15 Pittsburgh Lake 15 Twin Lakes Pass 15 Jacob City 15 Dog Lake Dog Hike 15 Lake Hardy 16 Dromedary Peak 16 Church Fork Peak 16 Mt Baldy 16 Deseret Peak 16 Timpanogos Cave
<u>Aug</u> 4 Work Party	18 Work Party	LODGE	<u>Sept</u> 8 John Muir Party	
<u>Aug</u> 4 Social	5 Social	SOCIALS 18 Family Potluck		
		VOLLEYBALL		

Monday Evenings, 6:30 at Fairmont Park

PROSPECTIVE MEMBERS

- are welcome on ALL club activities, with these exceptions:
- 1) Thursday Evening Hikes are for members only. However, prospective members may attend if the hike is their second qualifying activity for membership and they submit their dues check and application form to the leader before the hike.
 - 2) Boating trips are for members. However, prospective members may attend a weekend trip if they use the trip as their qualifying activity (each day counts as one activity.)
 - 3) A trip leader may choose to limit a trip to members, especially if there is limited space.

WMC HIKES: The hike rating indicates the difficulty of the hike. Hikes rated under 5 are easy, 5-8 are intermediate, above 8 are difficult. A hike may be more difficult than the rating would suggest. Watch for the terms "exposure", "rock scrambling", "bush whacking", and "steep". If you have any questions about a particular hike, feel free to call the leader ahead of time. Please come to the hike with proper equipment: adequate clothing, footwear, food, water, and any special equipment required for that hike. You must sign the liability release form to participate in any hike, and you are expected to stay with the group during the hike.

WMC BIKE RIDES: Rides are rated Not Too Difficult (NTD), Moderate (MOD), or Most Difficult (MSD). NTD rides will generally be less than 30 miles. MOD rides will be 30 to 50 hilly or up to 60 flat miles. MSD rides will be over 50 hilly or 60 flat miles. On all but newcomer rides, riders must bring their own water, food, tire repair tools, extra tubes, repair knowledge, sunscreen, and money. Consider wearing protective gear. Helmets may be required on some rides.

THURSDAY EVENING HIKE INFORMATION: These hikes are for members only except prospective members may use them as the second and final qualifying activity for membership provided their dues check and application are submitted to the leader prior to the hike. Meet at 6:30 pm: all hikes leave the meeting place at 6:45 pm PROMPT! All participants must sign the liability release form. Hikes are never cancelled for any reason including bad weather, so wear appropriate clothing. Boots will be required if the trail is in mud or snow. No dogs. Hikes in Mill Creek Canyon meet in Olympus Hills parking lot at 3900 Wasatch Blvd. just south of the defunct Bagel Nosh. Hikes in Big Cottonwood meet at the Storm Mountain Quartzites geology sign, 2.9 miles up the canyon (rh side) from the stoplight. Leader: Dale Green.

CLUB ACTIVITIES

Only activities approved by the appropriate WMC Director can be listed in the Club Activities section of the *Rambler*. Send your proposed activity, for approval, to the hiking, rafting, skiing, etc. director for inclusion in their activity schedule. Those activities sent directly to the *Rambler*, without approval, will not be published.

- Wed. Aug 1 WEDNESDAY NIGHT NATURE HIKE. Mill Creek Canyon. These are stop and smell the posies pace. Meet at the Bagel Nosh in the Olympus Hills Shopping Center at 6:30 P.M.
- Thu. Aug 2 THURSDAY EVENING HIKE. Mill Creek Canyon. This will be a moonlight hike. Bring snacks, your favorite beverage, a jacket, and a flashlight. Plan to be back at the cars by 10:30. Meet at 6:45 P.M. and leave at 7:00 P.M. Otherwise, the "Thursday Evening Hike Information" on the "Events at a Glance" page is correct.
- THURSDAY EVENING CLIMBING. At Lisa Falls, 2.5 miles up Little Cottonwood Canyon, marked by a sign on the left, and just before a sharp right turn in the road.
- Fri. Aug 3 GOBBLERS KNOB MOONLIGHT HIKE. Rated 7.7. According to Gene, the Knob got its name because wild Turkeys would congregate up on top, and the miners would go after them for fresh meat. So if you hear a ghostly gobble in the moonlight...you'll now know why. This hike will meet at 7:00 P.M. at the mouth of Big Cottonwood Canyon, and we still need a leader. Please call Jerry Hatch at 467-7186 if interested.
- Aug 3-5 UINTAS BACKPACK. Hikers and fisherpersons welcome. (Wooly Worms and Hares Ears recommended.) Leader Rip Johnson 944-9740.
Fri.-Sun.
- August 3-19 SEA TO SHINING SEA BIKE RIDE (STAGE 3). Phone Bob Wright,
Fri.-Sun. 1-649-4194 for information on any last minute additions.
- Sat. Aug 4 ADOPT-A-HIGHWAY CLEANUP. Have you seen the signs on the highway between the I-215 Knudsons Corner interchange and the mouth of Big Cottonwood Canyon? The WMC has adopted this section of highway to keep clear of trash. Please bring a pair of gloves. Cold pop will be provided. After the cleanup, the group is invited to the Lodge in Brighton for all the pizza you can eat. A hike is scheduled for the afternoon to Lake Catherine. Prospective members - this is a qualifying activity for membership. Meet at 9:00 A.M. at the west end of the Park and Ride lot at Big Cottonwood's mouth. If you are late, please do not join the group until you obtain a red safety vest. Leaders: Aaron Jones, 467-3532, and Dale Green, 277-6417.
- CECRET LAKE HIKE. Rated 1.2. This will be a very short hop with Ruth Hoppe up to the mysterious waters of Cecret Lake. It should be a lot of fun for those of you who like really easy hikes. Meet Ruth (484-5558) at 9:00 A.M. at the mouth of Big Cottonwood Canyon.

Sat. Aug 4

EMERALD LAKE HIKE. Rated 8.0. Trek through shimmering quakes to get to this high alpine viridescent lake. This is the time of year when the flowers are radiantly blooming in the Timpanogos wilderness area. Meet Fred Nash (943-6906) at 8:00 A.M. at the 72nd South and I-15 Park and Ride.

DESOLATION TRAIL HIKE. Rated substantial. Bob Myers wants to do the whole thing, (i.e. this will not be a good hike for wimps; but then few of Bob's are). The hike will start at the Guardsman's Pass Road and end (considerably later) at the Mill Creek Inn. Please call 485-9209 to register.

JORDAN RIVER TRAIL CONSTRUCTION. 9:00 A.M. to 1:00 P.M. Bring pruning loppers or saw and gloves. Meet at 500 South and the Jordan River (1200 West). Access trail off of 900 West and 400 South or 400 South and Redwood Road. Trail construction from 500 South to 600 South. Call Becky at 533-4496 to RSVP & for more info.

LODGE WORK PARTY. Starts at 10:00 A.M. or come after other activities. Lunch provided. The lodge is located at the trail head to the Lake Mary trail at Brighton. See "From the Lodge Director" elsewhere in this issue for more details, or call Vince Desimone 1-649-6805.

SATURDAY NIGHT SOCIAL. Remember last year's "Leo/Virgo Birthday Party"? Well - this is a repeat only it's for anyone who has ever had a birthday!! Come join the fun at Barbara Jacobsen's backyard barbecue. Destination is 1386 East McCormick Way (7340 South). Go east on 70th South (which is Fort Union Blvd.) to the 1700 East stop light, turn south and go to the stop sign. From that point, signs and balloons will be posted. If you get lost, call Barbara's "hot line" for help (943-3715). This barbecue is **POTLUCK** so bring a dish to share (no not that kind), something to grill, and **BYOB** - NO SOFT DRINKS WILL BE AVAILABLE. Party starts around 6:00 P.M. until ??? Cost \$1 to cover cost of paper products.

Sun. Aug 5

SMITH-MOREHOUSE PICNIC BIKE RIDE (NTD). Casually paced 33 mile ride following the Weber River up scenic Smith and Morehouse Canyon. (It's a gentle incline of 875 feet over 12 miles.) We'll rendezvous at the end of the pavement for a picnic lunch. Meet Elliott (968-7357), at the K-Mark/Regency to carpool at 9:00 AM, or in Kamas at Kamas Park (100 East 1st South), at 10:00 AM. Helmets required.

MINERAL FORK TO THE PASS HIKE. Rated 7. What a marvelously hidden away place Mineral Fork is! The trail is overhung with chokecherries and Ninebark, and repeatedly crosses a tumultuous stream. At this time of year the undergrowth is thick with wild raspberries and thimbleberries, both of which are delicious. Meet Howard Wilkerson (277-1510) at 9:00 A.M. at the mouth of Big Cottonwood Canyon.

PARK CITY OVERLOOK HIKE. Rated 3.5. This trail has very nearly been lost to a natural condominium development. Don't complain to the zoning commission though - the beavers have squatter's rights. (Since beavers can't climb trees, see if you can figure out how the trees got cut off so high). Meet Dick Honn (582-1944) at the Bagel Nosh in Olympus Hills at 8:00 A.M.

Sun. Aug 5

KESSLER PEAK HIKE. Rated 7.4. Kessler is the mountain of mystery. There are about seven different, interesting ways to reach the summit. On one trail there is the ruin of an old stone cabin. On another trail one of the finest fossils I've ever seen was found. I don't know which trail Chuck Gregg intends to use, but whichever one he uses, it'll be a good hike. Meet Chuck (364-3642) at 9:00 A.M. at the mouth of Big Cottonwood Canyon.

WHITE PINE TO RED PINE HIKE. Rated 7.5. The committee assures me that there is no significant exposure on this hike, which makes me think that I might really enjoy it. This is a good chance to see the "two Pines" from an unusual vantage point. Meet Sandy Blackburn (268-4655) at 9:00 A.M. at the mouth of Big Cottonwood Canyon.

VINCE DESIMONE'S FIFTH ANNUAL PARK CITY ART FESTIVAL SUNDAY SOCIAL. Beat the heat while you relax with friends or swim in the lake with the dogs. Stop by after the Park City Art Festival - dinner will be served at 5 P.M. but bring your own liquid refreshments. Cost will be \$4.00. Directions: Take the Park City exit from I-80 and turn left at the "Ridgeview" sign on Hiway 224 in Park City. Follow the WMC signs to the top of the hill. Questions? Call 1-649-6805.

Aug. 5-10
Sun.-Fri.

CANYON OF LEDORE BOATING TRIP. Class III, through Triplet falls and Hell's Half Mile! Guaranteed sunshine, perfect cfs, and NO WIND! Grand finale: Perseid meteor shower. Send \$25 deposit to Donna Kramer by July 15, or call 272-0418 after July 6th. (2977 Morningside Dr., SLC 84124)

Mon. Aug 6

VOLLEYBALL 6:30 in Fairmont Park. Easiest entry and parking is to turn west off 1100 East/Highland (they merge) onto Ashton Ave (2310 South) and go straight into the park. For information, call Doug at 269-1833.

ALPINE CANYON BOATING WORK PARTY. Meet at the WMC Boat Storage Center at 6:00 pm at 4317 S. 300 W., # 8. Located just north of ZIM's for all who are going on the August 11-12 family trip.

Tue. Aug 7

WESTWATER CANYON BOATING WORK PARTY. Meet at the WMC Boat Storage Center at 5:30 pm. at 4317 S. 300 W., # 8. Located just north of ZIM's for all who are going on the August 11-12 Westwater trip.

Wed. Aug 8

WEDNESDAY NIGHT NATURE HIKE. Mill Creek Canyon. These are stop and smell the posies pace. Meet at the Bagel Noşh in the Olympus Hills Shopping Center at 6:30 P.M.

Aug. 8-12
Wed.-Sun.

BACKPACK IN YELLOWSTONE. This will be a moderately strenuous loop through the south west corner of Yellowstone. The trail is fairly level. Featuring a layover day in Backer Canyon with swimming in hot springs and geysers. There is a 7 person limit. Call Kyle Williams at 298-2184.

Thu. Aug 9

THURSDAY EVENING HIKE. Big Cottonwood Canyon. See "Thursday Evening Hike Information" on "Events at a Glance" page for details.

THURSDAY EVENING CLIMBING. Storm Mountain.

Sat. Aug 11

PARK CITY/DEER VALLEY BIKE RIDE (NTD). This 17 mile ride will be an easy paced tour of the Park City area. We'll cycle thru Deer Valley, up Royal Street, and down Ontario Canyon. This ride has a couple of modest climbs, with an option of doing a very steep one mile climb up Aerie Drive. Afterwards, we'll have lunch at a local cafe. Meet Elliott (968-7357) at the K-Mart/Regency at 9:00 AM to carpool, or at Park City High (1750 East Kearns Boulevard, Park City), at 10:00. Helmets required.

AMETHYST LAKE HIKE. Rated 7-8. This High Uinta lake is located at the foot of Ostler Peak. This is a lovely lake, far less visited than our local Wasatch lakes, but we recommend that you bring along a little insect repellent, (or big insect repellent if you have any). Meet Norm Pobanz (266-3703) at the Regency Theatre parking lot on Parleys Way at 7:00 A.M.

SCOTTS BOWL AND JUPITER HILL HIKE. Exploratory, but probably around 5-6. This is both new and old country for the club; new in that we haven't hiked here before; and old in that many of you have often seen this area - covered with six and a half feet of powder. Meet Ken Kelley (942-7730) at the mouth of Big Cottonwood Canyon at 9:00 A.M.

ALEXANDER BASIN HIKE. Rated 3.3. This is a steep hike up to a sheltered ravine much favored by does and their fawns. The trail tunnels through dense undergrowth and patches of royal blue penstemon. Meet Tom Stephens (272-8532) at the Bagel Nosh in the Olympus Hills Shopping Center at 8:00 A.M.

MAYBIRD LAKES HIKE. Rated 6.0. There are some places which are inexorably linked in my mind with summer. These shallow, pellucid lakes, mirrors of the Pfiefferhorn, seem to contain a certain essence of summerness. They are where you go to escape the heat of the dog days and revel in the coolness of the upper alpine world. Meet Kathy Anderson (277-4652) at the mouth of Big Cottonwood Canyon at 9:00 A.M.

Aug. 11-12
Sat.-Sun.

ALPINE FAMILY BOATING TRIP (Class II). Nancy Inaba (968-9665) will lead this popular family trip. Send \$25. deposit to Nancy at 2495 West 3965 South, West Valley City, UT 84119.

Aug. 11-12
Sat.-Sun.

WESTWATER BOATING TRIP (Class III). Liza Poole (547-9400) will lead this overnight WW. Send \$25. deposit to Liza at 925 N. 1475 E., Layton, UT 84040. See Work Party on August 7.

Sun. Aug 12

LAKE SOLITUDE HIKE. Rated 2.9. Leah Mancini (582-7912) says that this is "a nice, cool shady hike past the new lift and up to the mines and the lake. Meet Leah at the mouth of Big Cottonwood Canyon at 8:00 A.M.

MT WATSON IN THE UINTAS HIKE. Rated 4-5. The view from the top of Watson - c'est magnifique! You can see the heads of four river drainages, the Bear, the Duchesne, the Provo, and the Weber from up there. This would be an excellent way to make a first acquaintance with the Uintas. Meet Chris Venizelos, (work 251-6254, home 355-7236 after 9:00 P.M.) at 7:30 A.M. at the Regency Theatre parking lot on Parleys Way.

Sun. Aug 12

LITTLE WATER PEAK VIA LITTLE WATER HIKE. Rated 4.8. YAHH!...UMPH!...thump,thump - there is no question about it, the mountain bikes are becoming a bit of a bother on Big Water, so we are shifting our operations eastward to Little Water. This is still a quiet lovely trail, and Evelyn Clayton (H 485-4974, W 578-7004) will meet you at the Bagel Nosh in the Olympus Hills Shopping Center at 8:30 A.M.

NORTH PEAK OF MT NEBO HIKE. Rated 9.1. Back in the early twenties when the club put the sign on top of the south peak of Nebo, that peak was considered the highest point in the Wasatch. We now know that the north peak is a few feet higher. Meet Paul Sheya (277-2902) at the Dennys at 4500 South and I-15 at 7:00 A.M.

SILVER GLANCE VIA WHITE PINE EXPLORATORY HIKE. (MSD) Tom Walsh seems to be able to plan hikes most of us couldn't even imagine. Silver Glance is located behind the ridge above White Pine, and getting there should be challenging (to say the least). Who knows, maybe this will become a club classic, and you will have had the satisfaction of having been one of the first to go on it. Call Tom (969-5842) to register.

HAYDEN PEAK TURTLES ONLY HIKE. Rated 7.0. This Uinta hike is a little more challenging than Mt. Watson, but the pace will be leisurely enough to accommodate most of those who usually do only easy hikes. There is a tiny bit of exposure a little before reaching the summit; however the view is great even if you turn around early. Meet Charles Lesley (364-2486) at the Regency Theatre parking lot on Parleys Way at 7:00 A.M.

Mon. Aug 13

VOLLEYBALL 6:30 in Fairmont Park. Easiest entry and parking is to turn west off 1100 East/Highland (they merge) onto Ashton Ave (2310 South) and go straight into the park. For information, call Doug at 269-1833.

Tue. Aug 14

WESTWATER CANYON BOATING WORK PARTY. Meet at the WMC Boat Storage Center at 5:30 pm at 4317 S. 300 W., # 8. Located just north of ZIM's for all who are going on the August 19 Westwater trip.

Wed. Aug 15

WEDNESDAY NIGHT BIKE RIDE (NTD). Emigration Canyon. Meet leader Lade Heaton (487-7686) across the street from the Hogle Zoo parking lot (do not park in the Zoo lot) at 6:30 PM. This 17 mile round trip ride climbs to the top of Little Mountain.

WEDNESDAY NIGHT NATURE HIKE. Mill Creek Canyon. These are stop and smell the posies pace. Meet at the Bagel Nosh in the Olympus Hills Shopping Center at 6:30 P.M.

Thu. Aug 16

THURSDAY EVENING HIKE. Mill Creek Canyon. See "Thursday Evening Hike Information" on the "Events at a Glance" page.

THURSDAY EVENING CLIMBING. Meet at the Gate Boulder 1.2 miles up Little Cottonwood Canyon. Top roping till dark.

Aug. 17-23
Fri.-Thur.

BACKPACK YELLOWSTONE. Join Sam Allan on this beautiful back country adventure. Experience the headwaters of the Yellowstone River and the Teton Divide. This will be a moderately paced loop over the Continental Divide.

Fly fishers and hikers alike are welcome. Please register in advance with Sam at 942-3149.

Sat. Aug 18

LODGE WORK PARTY. Starts at 10:00 A.M. or come after other activities. Lunch provided. The lodge is located at the trail head to the Lake Mary trail at Brighton. See "From the Lodge Director" elsewhere in this issue for more details, or call Vince Desimone 1-649-6805.

ALBION BASIN TO CATHERINE PASS NEWCOMERS HIKE. Rated about 3. This is another hike with a very knowledgeable leader. If you want to know about botany or Africa, you can't afford to miss this one. The flowers should be nice too. Meet Barry Quinn (272-7097) at the mouth of Big Cottonwood Canyon at 9:30 A.M.

BRIGHTON RIDGE RUN HIKE. Rated "a hardy 8 or 9." This is a good opportunity to get every possible view, from every possible peak above Brighton. There is a spectacular boulder field just below the Snake Ridge. Cameras are a must. Meet Art Griffin (363-1996) at 9:00 A.M. at the mouth of Big Cottonwood Canyon.

DOGGIE HIKE TO BAKER SPRING. Rated about 5.0. This is a new one for the dogs. Baker Spring, where Fido or Fifi can find refreshment after their snuffle through the flowers, is located down near the bottom of Gobblers Knob. If your dog would be interested, join Leigh Cowley (467-9802) at 9:00 A.M. at the Bagel Nosh in the Olympus Hills Shopping Center.

CLAYTON PEAK HIKE. Rated 5.0. After a final scramble up a steep trail edged with jagged boulders and delicate phlox there is a magnificent view at the top. To the east lies Lake Lackawaxen and Silver Isle Lake, to the south Midway and Mt. Timpanogos, and to the northeast the distant cloud capped ridges of the Uintas. Meet Dave Vickery (583-7064) at 8:30 am at the mouth of Big Cottonwood.

FAMILY PARTY AND POTLUCK BARBEQUE AT THE LODGE. This will be an evening of fun at the lodge for the whole family. Bring something to barbeque for yourselves and a side dish to share. Soft drinks will be available for a nominal cost. The cost for the party will be \$5.00 per family or \$2.00 per person, whichever is less. We will have the coals ready about 5:30 P.M. and plan to eat about 6:00 P.M. Questions? Call Marc or Susan at 355-3227. See you there!

Sun. Aug 19

TOOELE VALLEY BIKE RIDE (NTD). This 31 mile ride will be a casually paced tour of Northern Tooele Valley. We'll stop in Grantsville at a cafe for lunch. The terrain is easy. Meet Elliott (968-7357) in the North parking lot of Valley Fair Mall to carpool at 9:00 AM, or the Stansbury Park Observatory, at 10:00. Helmets required.

WESTWATER BOATING TRIP (Class III). Larry Hardebeck (467-7120) will lead this overnigher. Send \$25. deposit to Larry at 2530 E. 2900 S, SLC, UT 84109. See Work Party on August 14.

Sun. Aug 19

TWIN LAKES PASS VIA GRIZZLY GULCH HIKE. Rated 2.5. This hike goes up past the vanishing ruins of Michigan City, and affords point blank views of Wolverine, Sunset Peak, Millicent, and several other peaks. There will be possible sightings of Golden Eagles and Turkey Vultures. Meet Margo Markowski (363-1996) at 8:30 A.M. at the mouth of Big Cottonwood Canyon.

DAYS FORK TO THE MINE HIKE. Rated 4.6. What connection is there between Bridgewater Massachusetts and the stark rugged alpine wilderness of upper Days Fork? There is one, and if you'd like to find out what it is, join Amy Morton (467-6129) at 8:30 A.M. at the mouth of Big Cottonwood Canyon.

LAKE BLANCHE HIKE. Rated 5.7. The rocky shores of this lake are covered with wild onions and rosehips. In the early morning the rocks abound with barking pikas and sunning marmots. Meet Jim Smith (943-6004) at the mouth of Big Cottonwood at 8:00 A.M.

BULLION DIVIDE HIKE. Rated about 12. This is another Tom Walsh special. Call 969-5842 for details.

Aug. 19-20
Sun.-Mon.

WESTWATER BOATING TRIP (Class III). Larry Hardebeck (467-7120) will lead this overnigher. Send \$25. deposit to Larry at 2530 E. 2900 S, SLC, UT 84109. See Work Party on August 14.

Mon. Aug 20

VOLLEYBALL 6:30 in Fairmont Park. Easiest entry and parking is to turn west off 1100 East/Highland (they merge) onto Ashton Ave (2310 South) and go straight into the park. For information, call Doug at 269-1833.

Thu. Aug 23

THURSDAY EVENING HIKE. Big Cottonwood Canyon. See "Thursday Evening Hike Information" on "Events at a Glance" page for details.

THURSDAY EVENING CLIMBING. At Lisa Falls.

Aug 24-26
Fri.-Sun.

TETONS MOUNTAIN CLIMBING. Leave Thursday night and return Sunday evening. The objectives will be determined by the participants. Leader Tony Thompson, 363-9891.

Sat. Aug 25

TOUR DE TUMMIES BIKE RIDE (NTD+). This is a tour that will start in Liberty Park and proceed up Emigration Canyon to Little Mountain and return to the park in time to view an awesome display of navel power at the annual Belly Dance Festival. Mideastern foods may be purchased at the park for lunch. Meet at the Pavilion in the northeast corner of Liberty Park at 10:00AM. Ride Leader, John Peterson (277-8817).

GREEN'S BASIN HIKE. Rated 2.5. This one is fun, and it has a fun leader too! Join Duane Call (485-2980) at 9:00 A.M. at the mouth of Big Cottonwood.

RED PINE LAKE HIKE. Rated 5.3. Arguably Red Pine is the prettiest lake in the Wasatch. About 400 feet above it is the tiny, ultramarine gem of Upper Red Pine Lake. Perhaps if you're feeling ambitious...! Meet Rob Rogalski (home - 942-8142, work - 277-0618) at 9:00 A.M. at the mouth of Big Cottonwood Canyon.

- Sat. Aug 25 **BEARTRAP FORK HIKE.** Rated 5.3. Where is Beartrap? Well, basically it is a seldom used trail in a gulch south of Lake Desolation. One of the finest features is a magnificent view of beautiful blue Deso from the ridge. Meet Terry Rollins (467-5088) at the mouth of Big Cottonwood at 9:00 A.M.
- JORDAN RIVER TRAIL CONSTRUCTION.** 9:00 A.M. to 1:00 P.M. Bring pruning loppers or saw and gloves. Meet at 700 South and the Jordan River (1200 West). Access trail off of 900 West and 700 South. Trail construction from 600 South to 800 South. Call Becky at 533-4496 to RSVP & for more info.
- Aug. 25-26 **CAR CAMP BOULDER MOUNTAIN CATHEDRAL VALLEY.** Leader
Sat.-Sun. Robert Turner (a man with an eye and love for beautiful places) would like to share this unique area with the Wasatch Mountain Club. There will be beautiful day hikes in the LaSal Mountains. There is a limit of 12 participants. Call Robert to register at 583-5037.
- Aug 25-26 **MT. TIMPANOGOS CAR CAMP/MT. TIMPANOGOS HIKE.** This is a little
Sat.-Sun. complicated. Eldon Madsen will be leaving Saturday afternoon to lead a car camp to the Timponee trailhead. Phone him at 485-7236 to register. Eldon will also be leading the hike, which will start at 7:30 A.M. Sunday morning. Those folks who are not going on the car camp need to meet at the Denny's at 45th South and I-80 and depart SLC by 6:00 A.M. in order to get to Timponee by 7:15 A.M. Got it? If not, call Eldon.
- Sun. Aug 26 **PARK CITY OVERLOOK NEWCOMER'S HIKE.** Rated 3.5. Due to the late opening of the Millcreek gate, this is the first time we've actually been able to do this hike. We've got a great newcomer's leader too. Meet Louise Rausch (328-1290) at 9:00 A.M. at the Olympus Hills Mall.
- BAGELS IN THE BASIN HIKE.** Rated 4.2. Here's the deal: you bring the juice and coffee, and Annie Holt will supply the bagels! (What a nice person!) I can't think of a more beautiful place than Alexander Basin for a Sunday morning bagel brunch. Meet Annie (484-2625) at 8:30 A.M. at the Bagel Nosh (logical place, eh?).
- MT. EVERGREEN HIKE.** Rated 2.8. This is a short, very briefly steep hike to a peak above Brighton. For any of you flower snufflers, this hike has lots of Jacob's Ladder, Spurred Lupine, and wild sweet pea. Meet Bill Loggins (596-0597) at the Brighton Ski Resort at 9:00 A.M.
- Mon. Aug 27 **MONDAY NIGHT BIKE RIDE (NTD).** City Creek Canyon. Meet Sam Kingston (355-8043) at the large parking lot, northeast corner of the Capitol complex at 6:30. This popular scenic ride ascends 7.2 miles to Rotary Park. Helmets required.
- WESTWATER CANYON BOATING WORK PARTY.** Meet at the WMC Boat Storage Center at 6:00 pm at 4317 S. 300 W., # 8. Located just north of ZIM's for all who are going on the September 2-3 Westwater trip.
- VOLLEYBALL** 6:30 in Fairmont Park. Easiest entry and parking is to turn west off 1100 East/Highland (they merge) onto Ashton Ave (2310 South) and go straight into the park. For information, call Doug at 269-1833.

Thu. Aug 30

THURSDAY EVENING HIKE. Mill Creek Canyon. See "Thursday Evening Hike Information" on the "Events at a Glance" page.

THURSDAY EVENING CLIMBING. Storm Mountain.

Aug 31-Sept 3
Fri.-Mon.

KINGS PEAK BACKPACK. Leave Thursday night, August 30. We will be camping at Henry's Fork Trailhead for those who want to meet us there. Otherwise, we will meet everyone at 8:45 A.M. on Friday, August 31 for a 9 mile backpack into Dollar Lake which will be our base camp. Limit 12 lucky people. Call leaders Barbara Jacobsen at 943-3715 or Leslie Woods at 484-2338 for information and to sign up.

BALD MOUNTAIN TO RED CASTLE LAKE BACKPACK. Mike wants to return from the lake by the Little East Fork of Black's Fork. The entire hike will cover a distance of 21 miles, with some off trail activity. Mike Hendrickson (942-1476) requests that you phone early, as there will be a limit of 12 participants.

WINDRIVER BACKPACK. This will be limited to 11 people and will be led by Janiece Pompa and Louise Knauer (485-3116). Please call early to register.

Sept. 1-2
Sat.-Sun.

CHEESEBOX CANYON CAR CAMP. (EXPLORATORY). Cheesebox Canyon is a tributary of White Canyon, between Hite and Natural Bridges National Monument. According to rumor, it is difficult, with numerous long, cold swims through endless narrows. Participants should be willing to get up early and hike hard all day, through hot dry stretches as well as cold wet ones. Wetsuits and pack flotation/waterproofing are required. (Wetsuits can be rented from various Salt Lake area outdoor shops.) In the event of a flash flood type weather pattern, we will reschedule this for another location or for the weekend of Sept. 8-9. Leader: Gordon Swenson (home - 521-8026, work - 363-9345).

Sept. 1-3
Sat.-Mon.

UINTAS BACKPACK. This backpack will go up Henry's Fork to a campsite below Kings Peak. This is a full moon weekend in a magnificent setting. Call Jeff Barrell (278-3510) early to sign up as this hike will be limited to 8 people.

Sept. 1-3
Sat.-Mon.

WIND RIVER MOUNTAIN CLIMBING. Pyramid Lake, an area infrequently visited by climbers, offers fine routes on granite. It is about 12 miles from the Big Sandy Opening. Fires are permitted, Pack horse rental is a possibility. Leader Tony Thompson 363-9891.

Sat. Sept 1

SHERWOOD HILLS BIKE RIDE (MOD). This 52 mile ride goes from Pleasant View to Sherwood Hills Resort. This ride passes thru some of Northern Utah's finest orchards, tours the town of Mantua, and climbs over the summit of Sardine Canyon. If we're lucky, we'll have spectacular autumn colors awaiting us. At the resort, we'll have lunch, and then lounge about in the pool and hot tub, before returning (so bring a swim suit and towel). The terrain is easy flat to rolling notwithstanding the climb up Sardine Canyon, which is 1388 feet over 8.2 miles. Meet Elliott (968-7357) in the Southwest parking lot of the State Capitol building at 9:00 AM to carpool, or at Shady Lane Park in Pleasant View (3100 North 600 West), at 10:00. Helmets required. Mountain bikes are not appropriate on this ride.

Sat. Sept 1

ALBION BASIN AND CECRET LAKE HIKE. Rated 1.2+. This is a great place to ski! Of course, it may be a little early, so bring hiking boots and be prepared to wander across the wildflower capital of the Wasatch. Meet Greg Tippets (581-9748) at the mouth of Big Cottonwood at 9:00 A.M.

MAYBIRD LAKES HIKE. Rated 6.0. Well, all you Septemberbirds, the big fade is on,---gads, but I do hate winter. Why don't you join me, Jerry Hatch (467-7186) for a somewhat penultimate wander in the woods. Meet me at 9:00 A.M. at the mouth of Big Cottonwood.

MT RAYMOND VIA BUTLER FORK HIKE. Rated 7.9. The trail up Butler Fork wanders by a stream which is adorned with Cowparsnips, Monkshood, White Columbine, and an endless array of multicolored Geraniums. This hike is perhaps one of the most lush blooms in the Wasatch. Meet Brett and Lynette Brooks (266-1708) at 9:00 A.M. at the mouth of Big Cottonwood Canyon.

CLAYTON PEAK MOONLIGHT HIKE. Rated 5.0. This will be a fine opportunity to see the disk of the moon casting a white light over the fields of Heber Valley, and the great crenellated bulk of Timpanogos. Join Gene Wooldridge (973-8073) at 7:00 P.M. at the mouth of Big Cottonwood.

Sun. Sept 2

BOX ELDER PEAK TURTLES ONLY HIKE. This hike is just for slow pokes who would like to try a little longer hike than usual but fear falling hopelessly far behind. The rating of 9.6 will not be allowed as an excuse to hurry. A 7:00 A.M. meeting time at the Bagel Nosh in the Olympus Hills Shopping Center will allow ample time for the "slowest poke" to set the pace. Phone the ultra-slow poke leader, Charles Lesley, at 364-2486.

WILLOW LAKE FAMILY HIKE. Rated 1.5. High, lush green flora and aspens are always a treat. The small basin that Willow Lake lies in is splendidly diverse in terrain. The willow clumps on the southeast shore are a great place for a game of hide and seek. If you have a sharp eye and are patient, there are salamanders to be seen in the lake from the beaver dam. Our leader for this special exposition is Agnes Greenhall (484-9831). The meeting place is the mouth of Big Cottonwood and the time is 9:30 A.M.

MT. BALDY HIKE. Rated approximately 4. Lotsa trouble finin' leaders on Labor Day--if any of you have a Nietzschean will to power or would simply like to go to the hike leader's party, give me a call (467-7186). This, by the way, is the Baldy in the Uintahs and you need to meet at the Regency Theater parking lot at 8:30 A.M.

SUNSET PEAK HIKE. Via Katherine Pass and down Pioneer Peak, rated 7. This is a loop hike led by one of our most suave and debonair members. Join Lyn Nall (467-4043) for a beautiful day and more than a few laughs. Lynn will meet you at 9:00 A.M. at the mouth of Big Cottonwood Canyon.

MONTE CRISTO HIKE. Rated 7.7. Remember how a couple of months ago I was having so much trouble finding a leader for the Mt. Superior hike? Well, ahum...once again...we need a leader. If one of you folks who called me could once again call me (J. Hatch, 467-7186), it would be appreciated. The hike will meet at 9:00 A.M. at the mouth of Big Cottonwood.

Sept. 2-3
Sun.-Mon.

WESTWATER CANYON BOATING TRIP (Class III). We have arranged for a full moon, plan on great food, and are working on prime weather for this laid-back overnight trip on Westwater over Labor Day Weekend. Send \$25 to Craig Homer at 3364 Sunnybrook Dr., SLC, UT 84119 before August 7 to secure a spot on the trip. Call Craig at 968-1195 with any questions. Note the Work party on August 27.

Mon. Sept 3

HOOPER HORIZONTAL CENTURY BIKE RIDE (MOD). This is a very flat 100 mile ride over quiet back roads to the Tomato Days Festival in Hooper where you may stroll through the Festival and purchase lunch from the food stands. This ride signals the end of summer bicycling season. Meet at the Utah Department of Agriculture Building parking lot at 350 North Redwood Road at 7:00AM. Ride Leader, John Peterson (277-8817).

MT. AIRE HIKE. Rated 3.8. Speaking of historic America, one of the finest picnic tables in the western US is located on this trail. Made out of big split logs, it is fit for kings and clergymen, but is mostly used by Stellar Jays and squirrels (an occasional cracker or nut is much appreciated). Meet Phyllis Papan (295-7841) at the Olympus Hills Mall at 9:00 A.M.

DAY'S FORK TO THE MINE HIKE. Rated 4.6. Apparently when they sealed the mine entrance they used a tremendous amount of dynamite. There is an enormous pit where the entrance was, and one of the huge boilers has fallen down into it. It is also very interesting to speculate on how they got the boilers up there. Meet Lowell Wallace (572-3213) at the mouth of Big Cottonwood at 9:00 A.M.

SUNDIAL PEAK HIKE (Dual hike, rated either 5.7 or 9.9 to Sundial). Clint wants to climb up to Lake Blanche at a very modest pace, and if that's as far as you want to go, that's OK. The remainder of the group will then continue up to Sundial for all that great exposure. Meet Clint Lewis (295-8645) at 9:00 A.M. at the mouth of Big Cottonwood Canyon.

VOLLEYBALL 6:30 in Fairmont Park. Easiest entry and parking is to turn west off 1100 East/Highland (they merge) onto Ashton Ave (2310 South) and go straight into the park. For information, call Doug at 269-1833.

Thu. Sept 6

THURSDAY EVENING HIKER'S PARTY. On the last scheduled Thursday Eve Hike we'll have a small party to celebrate the change of seasons. Bring munchies to share and some liquid refreshments. This is not a qualifying activity for membership. See "Thursday Evening Hike Information" on the "Events at a Glance" page.

THURSDAY EVENING CLIMBING. Storm Mountain.

Sept. 7th-9th
Fri.-Sun.

SOUTHERN IDAHO BIKE RIDE (NTD/MOD). Colors turn vivid earlier in Southern Idaho and should peak this weekend. We'll ride 34 miles over gently rolling terrain alongside the Portneuf River as it courses through the valley to Soda Springs. There, we'll pick up supplies and picnic at Hooper Springs Park before heading back to Lava Hot Springs via US 30. This 24 mile return has one 2.5 mile climb of 5% over Fish Creek Pass followed by a 4 mile descent into town. For the ambitious souls there is an additional loop of 22 miles past a large reservoir and through the old Mormon settlement of Chesterfield.

After the ride there are state-run hot springs to soothe those aching muscles, then dinner at the Royal Hotel. Meet Frank & Joyce Luddington (277-4564) at 9AM on Saturday morning at the Royal Hotel in Lava Hot Springs. Fine accommodations exist for campers next to the river and nearby at the Royal Inn, a turn-of-the-century B&B Inn, for luxury lovers. But call us early for reservations; they only have 8 rooms.

Sat. Sept 8

LAKE KATHERINE NEWCOMERS HIKE. Rated 3.7. Join your host, Chuck Reichmuth for one of the most beautiful hikes in the Wasatch. Chuck (483-1542) is one of the really interesting trip leaders in the club, and this should be a lot of fun. Meet at 9:00 A.M. at the mouth of Big Cottonwood Canyon.

LOOKOUT MOUNTAIN HIKE. Rated 7.5. As some hikes are the quintessence of summer, this hike is the quintessence of autumn. The cottonwoods in Killyon Canyon should be just beginning to turn, while farther up the aspen copses will be standing saffron above the brown, grassy hillsides. Meet Jim Highsmith, (582-0902), at the east end of the Hogle Zoo parking lot at 9:00 A.M.

WHITE PINE HIKE. Rated 6.3. The hike up to White Pine is always cool and redolent with the high alpine smells of Engelmann Spruce, horsemint, and prickly currants. Meet Barbara Jacobsen, (the hike is worth it, just to meet Barbara), at the mouth of Big Cottonwood Canyon at 9:00 A.M. Barbara's number is 943-3715.

JOHN MUIR'S BELATED BIRTHDAY PARTY AND DANCE AT THE LODGE. Celebrate the birthday of John Muir, the father of the North American conservation movement, with an evening of dancing and music from Muir's native Scotland. Gail Cordy and Martha Veranth of the Salt Lake Scottish Country Dancers will teach easy Scottish country dances; there will also be live bagpipe music. Bring a dessert (soft drinks will be available at cost) at 7:30; dancing starts about 8:00. Cost: \$3.00 per person.

Sept. 8-9
Sat.-Sun.

ADVANCED RIVER RESCUE COURSE AT WESTWATER CANYON (Class III). A prior river safety course (or demonstrated equivalent knowledge) is required to attend this course. Ken McCarthy will cover advanced rope systems, lining of rafts, swimming and throw bag practice in full current and waves, kayak rescue of swimmers, flipping of rafts, swimming with and righting of rafts, rescue of a pinned raft, and selected first aid situations. The course fee is \$35.00. Call leader Jim Brown for approval to attend the course at 359-0754. A \$60.00 deposit is required.

Sept. 8-9
Sat.-Sun.

BACKPACK. Day hiking on Saturday and Sunday in Capitol Reef or on Boulder Mountain. Possibilities include the Cable Hike (depending on climbing skills), Walker Peak (scrambling and some exposure) or exploring north of Meeks Mesa, towards the head waters of Sulfer Creek and Spring Canyon. If there is significant interest, we might arrange a mountain hike shuttle up to Boulder Top, camping behind the "Cockscomb" or in the leader's back yard in Teasdale. Limit 12 people. Meet in front of the Teasdale Merc in Teasdale, UT at 8:00 P.M. Friday Sept. 7. Contact Scott Verry at work (363-5650) or at home (531-6322) for more info.

Sun. Sept 9

LAMBS CANYON VIA ELBOW FORK HIKE. Rated 3.4. With autumn this hike should be even lovelier than usual. In autumn the soft, hazy sunlight splashes down through the quakes, broken and diffused by the fluttering leaves. Meet Leslie Woods (484-2338) at the Bagel Nosh in the Olympus Hills Shopping Center at 9:00 A.M.

THAYNES PEAK HIKE. Rated 7.1. At the start of this hike there is a magnificent stand of tall maples elegantly tinted from a dark amber to a light pink. Up along the ridge the gold of the aspens mingles with the dark green of the pines. Meet Jim Frese (1-882-5222) at the Bagel Nosh in the Olympus Hills Shopping Center at 9:00 A.M.

MT OLYMPUS HIKE. Rated 8.3. If you've been afraid of Mt Olympus before, now is your chance. Eldon Madsen (485-7236, leave message), will lead you at a gentle pace, and assures us that all of you can "accomplish the top." Go for it! Meet Eldon at 8:00 A.M. at the mouth of Big Cottonwood Canyon.

CIRCLE ALL AND BUTLER WALKABOUT LOOP HIKE. Rated moderate. Despite the name, there is nothing Australian about this hike. It's in our own beautiful Wasatch Mountains and will be a nice little variation on our usual Circle All route. Meet Leslie Mullins (363-0560) at 9:00 A.M. at the mouth of Big Cottonwood Canyon.

Mon. Sept 10

WESTWATER CANYON BOATING WORK PARTY. Meet at the WMC Boat Storage Center at 5:30 pm at 4317 S. 300 W., # 8. Located just north of ZIM's for all who are going on the September 15-16 Westwater trip.

Tue. Sept 11

TUESDAY NIGHT BIKE RIDE (NTD). City Creek Canyon. Meet Sam Kingston (355-8043) at the large parking lot, northeast corner of the Capitol complex at 6:30. This popular scenic ride ascends 7.2 miles to Rotary Park. Helmets required.

Sept 12-16
Wed.-Sun.

BACKPACK IN THE SELWAY BITTERROOTS. Leader Mike Budig. Call 328-4512 for details.

Thu. Sept 13

THURSDAY EVENING CLIMBING. Gate Buttriss.

Sept. 14-16
Fri.-Sun.

DUCK CREEK BIKE RIDE (MOD). Call Leader Bob Geer for details.

Sat. Sept 15

PITTSBURGH LAKE IN AMERICAN FORK CANYON HIKE. Exploratory, but moderate. Martin will need three or four high clearance vehicles for the final carpool at Tibbal Fork. He says that if the weather is bad he will switch the hike to the Honeycomb Cliffs in Big Cottonwood, since the road to the Pittsburgh trailhead is impassable when it is wet. Regardless of the weather the hike will meet at the 7200 South Park and Ride at 8:30 A.M., or call Martin McGregor (967-9860) for more info. This sounds like a good chance to see a place that is seldom visited by the club.

TWIN LAKES PASS HIKE. Rated 3.4. This long time club favorite offers easy trails around lakes and through flowered meadows to the saddle known as Twin Lakes Pass. From this pass there are views of aspens and conifer

covered slopes, high mountain lakes, and majestic peaks. (No pun intended). Join Leona Conn (363-6035) at the Hillside Plaza Shopping Center (7000 S. 2300 E.) at 10:00 A.M.

Sat. Sept 15

DOG LAKE DOG HIKE. Rated 3.5. Woof, woof, woof. This is quite literally a hike for the dogs, to the Dog. This is a chance to take Fido walking and then swimming, (since I've never known a dog not to play in the water at the end of this hike). Meet Leigh Cowley (467-9802) at the Bagel Nosh in the Olympus Hills Shopping Center at 9:00 A.M. Woof, woof!

JACOB CITY HIKE. Rated 4.0. Well, the hotel is gone, but the ruins of the town remain. If any of you are interested in taking a look at the last of the rapidly vanishing west, join me, Jerry Hatch (467-7186) at 9:00 A.M. at the Union 76 station at the Tooele Exit of I-80.

LAKE HARDY HIKE. Rated 8.5. The slopes on the way up to the lake will be covered with maples turning red and mountain mahogany turning dun. There is a great deal of exposed white granite surrounding this high alpine lake - a celestial ambience. Meet Marc Hutchison (355-3227) at the 7200 South Park and Ride at 8:00 A.M.

JORDAN RIVER TRAIL CONSTRUCTION. 9:00 A.M. to 1:00 P.M. Bring pruning loppers or saw and gloves. Meet at 900 South and the Jordan River (1000 West). Access trail off of 900 West and 900 South. Trail construction from 900 South to 1100 South. Call Becky at 533-4496 for info & to RSVP.

Sept. 15-16
Sat.-Sun.

WESTWATER CANYON BOATING TRIP (Class III). Send \$25 to Craig Sturm (581-1225) and Jay Abramowitz (278-8076) who will lead this fun 2-day trip. Call first, then send \$25. deposit to Craig at 1337 Immigration Circle, SLC, UT 84108. Note the Work party on September 10.

Sept. 15-16
Sat.-Sun.

GREAT BASIN NATIONAL PARK CAR CAMP. There will be a day hike and cave exploration. Options are many for hikes or other activities in this area. Group interests and skills will determine the agenda of the weekend's events. For more info and to please register by Thursday, Sept 13, call Wick Miller at 1-649-1790.

Sun. Sept 16

TIMPANOGOS CAVE HIKE. Rated 1.5. Besides being the legendary leader of the Thursday Night Hikes, Dale Green is one of the finest spelunkers in Utah. This will be a chance to get an introduction into caves and cave lore by a real expert. Meet Dale (266-6417) at 8:00 A.M. at the Denny's parking lot at 4500 South & I-15.

MT BALDY ABOVE ALTA HIKE. Rated 4.1. Some of the big limber pines on this hike are among the oldest trees in the Wasatch. Some of these gnarled antiquities are nearly 2000 years old. Meet Sandra Taylor and Russell Wilhelmsen (583-2306) at the mouth of Big Cottonwood Canyon at 9:30 A.M.

Sun. Sept 16

CHURCH FORK PEAK HIKE. Rated 5.6. On your way up to Grandeur Peak there is a narrow trail that takes off to the east across a hillside covered with autumn rusted gambel oaks. This is the seldom done route to the peak. Meet Dennis Holland at 9:00 A.M. at the Bagel Nosh in the Olympus Hills Shopping Center.

- Sun. Sept 16 **DESERET PEAK HIKE**. Rated 8.1. This summit affords a spectacular view of the west desert, the Cedar Range, and Skull Valley. In the far distance the Deep Creeks shimmer in the heat. This time of year the mushrooms are out, and there is a chance of sighting some wild mustangs. Meet Norm Fish at the Union 76 station at the Tooele exit of I-80 at 8:30 A.M.
- DROMEDARY PEAK TURTLES ONLY HIKE**. Rated 11.6. Have you hiked to Lake Blanche and, seeing Dromedary Peak, thought you would like to see the view from up there only to think you couldn't because you arrived so far behind everyone else? Reconsider. This will be a slow paced ascent designed not to wear you out only half way. Plan for scrambling over rocks, a little exposure, a 7:00 A.M. meeting time, and to phone Charles Lesley at 364-2486 to find out where to meet.
- Sat. Sept 22 **SMITH-MOREHOUSE MTN. BIKE RIDE (NTD)**. Meet at the Kamas City Park at 11 AM or at the Regency/K-Mart parking lot for carpooling at 10 AM, for this 43 mile ride to the Smith-Morehouse Reservoir to view the fall colors. Mountain bikes recommended (12 miles of good dirt road). Call leader Lade Heaton (487-7686) for more information.
- Sun. Sept 23 **CACHE VALLEY BIKE RIDE (MSD)**. This 78 mile ride is a tour of Southern Cache Valley. We'll ride thru the rural communities of Mendon, Wellsville, Hyrum, Avon and Paradise, and cycle up Blacksmith Fork Canyon to hardware Ranch. We'll tour picturesque farm lands, spin past Hyrum Reservoir, pedal to the entrance of the Big C Ranch, ride adjacent to one of the States best fly fishing streams, and visit the area where thousands of Elk winter each year. The terrain is easy flat to rolling notwithstanding a gentle climb up Blacksmith Fork Canyon (888 feet over 16 miles). We'll return to the cars for lunch, so bring a cooler and a picnic lunch. After the ride we'll go swimming and stop for dinner before returning to Salt Lake. Meet Elliott (986-7357) in the Southwest parking lot of the State Capitol building at 8:00 AM to carpool, or at Hyrum Park, 7th East Main Street, Hyrum, at 9:45. Helmets required. Mountain bikes are not appropriate on this ride.
- Tue. Sept 25 **WESTWATER CANYON BOATING WORK PARTY**. Meet at the WMC Boating Shed near Zim's at 6:30 (4317 South 300 West #8). All who go on the Sept. 29 trip should attend.
- Sat. Sept 29 **LAYTON DELI BIKE RIDE (NTD)**. Bike ride to wonderful German food at the Layton Deli. Meet leader John Peterson (277-8817) at the Utah Department of Agriculture Building parking lot at 350 North Redwood Road at 9:30 AM (60 mile ride) OR at the McDonald's (30 mile ride) at the Centerville exit off I-15 at 10:30 AM. Ride Leader, John Peterson (277-8817), helmets required.
- Sept 29-30 **WESTWATER CANYON BOATING TRIP (Class III with one IV)**. This will be a small overnight trip. Rafting contingent upon availability of qualified captain(s). Send experience and \$25 deposit to Marlene Egger (4831 S. Wren Circle #1, SLC, 84117. Phone 277-2894. Work party Sept 25.
- Sun. Sept 30 **MOUNT NEBO BIKE RIDE (MSD)**. This 74 mile ride climbs to the summit of the Mount Nebo Scenic Drive (4813 feet over 23 miles), drops down to Nephi, and then loops back to Payson. The cool mountain air, in combination

with the autumn colors and spectacular vistas of Mount Nebo, should make this a fantastic ride. This is a challenging course and includes several very steep sections, as well as a fast descent with sharp switchbacks off the summit. We'll stop at a cafe in Nephi for lunch. Meet Elliott (968-7357), at the Park & Ride off I-15 at 5300 South (West side) at 8:00 AM to carpool, or in Payson at Payson Park, 200 South 100 East, at 9:30. Helmets required. Mountain bikes are not appropriate on this ride.

Sun. Oct 7

DEER VALLEY BIKE RIDE (MSD). This 50 mile ride features a invigorating climb up Parleys Canyon, and then a relaxing lunch in Deer Valley. This ride has 3312 feet of climbing. Meet Elliott (968-7357), in the Olympus Hills shopping Center parking lot at 9:00 AM. Helmets required. Mountain bikes are not appropriate on this ride.

Sun. Oct 14

PARK CITY to KAMAS BIKE RIDE (MOD). This 34 mile ride to Kamas for breakfast, brunch, lunch (your choice). Our route will be via Brown's Canyon and along Woodenshoe Lane and Democrat Alley going, and return by way of the new highway running along the Northside of Jordanelle Reservoir (1.6 miles of the course is unpaved). This ride has two modest climbs on the return leg. One is 563 feet over 3.3 miles, and the other is 400 feet over 1.8 miles. Meet Elliott (968-7357), at the K-Mart/Regency to carpool at 9:00 AM, or in Park City at Park City High (1750 East Kearns Boulevard), at 10:00. Helmets required.

SUMMER CLEARANCE SALE

Aug. 20 - 25th = 10-7 daily

Road frames	upto \$150.00 off
Road Bikes	upto \$200.00 off
Mtn. Bikes	upto \$100.00 off
Cateye Wireless Computers	reg \$99. \$69.95
Giro or Specialized Helmets ..	\$10.00 off with any
Hardshell helmet tradein.	
Look Pedals	upto \$20.00 off with pedal tradein
Yakima Products	15 % off
Assorted Lycra Shorts	upto 50 % off
MUCH - MUCH MORE !!!	

Get a free waterbottle for just stopping
by and mentioning the WMC



Fishers Cyclery, Inc. • 2175 South 900 East • Salt Lake City, Utah 84106 • 801 466-3971



CONSERVATION NOTES

CONSERVATION NOTES

by Janet Friend

What good is it to have a week off unless you have located a blank spot on the map to explore! Nothing can be more exciting than loading that backpack and motoring away with a group of hikers when the leader announces an "exploratory trip". He has a scant map or two with very few lines, except for those many parallel lines winding around like a music staff. The excitement of the unknown is always intriguing.

It seems it ought to be the right of every child born today to have some of this wilderness left for him to explore - and re-explore. There is only one way this can be, and that is for us to block off large chunks of land for wilderness. A little parcel here and there won't do it. We need a few large entire ecosystems including rivers and swamps with the mountains that feed them, and unmanaged game including their predators.

If you have any chance at all to promote or encourage or push for the 5 million acres of proposed wilderness in the future, please do so.

The new book, *"Wilderness at the Edge"*, is almost ready for publishing. This has been put together by the Utah Wilderness Coalition concerning the 5 million acre BLM proposal for wilderness. This book will be a must in every Utah home - available later this summer.

Salt Lake County Clean Air Coalition Benefit Concert on Sunday, August 19, 1990, 6-8 p.m. Red Butte Gardens, \$5,00 per person.

Performers:

Julie Mark
Maggie Beers
Greg Scott
Andrew Larson

A shuttle bus will be available from Special Events Center parking lot.

DEVELOPMENTS IN THE CANYONS

by Keith Johnson

Janet Friend, Norm Fish, Milt Hollander, John Riley, Gay Carver and myself met with Mike Sieg, John Hogland and Jim White of the District Ranger's office to discuss the following:

AN ENVIRONMENTAL IMPACT STATEMENT FOR BRIGHTON

The Forest Service has decided that an EIS will be necessary before any further approval can be given to Brighton Ski Resort plans. The Forest Service, Salt Lake County, Wasatch County, and the Division of Wildlife Resources have met to discuss concerns regarding resort development on the other side of the mountain. After considering the possibility of squelching the expansion on the Wasatch side altogether, a decision was made to hire the consulting firm of Bear West - that's right, the same outfit that was involved with the Wasatch Canyons Master Plan, to do the EIS.

The scoping document should be mailed out very soon and some club members will be receiving it. The Forest Service is receptive to the idea of including a WMC person on the problem identification team. If it is decided to pursue such involvement, the task would most likely be a shared one for it would be too time consuming for one person.

LITTLE COTTONWOOD HISTORICAL TRAIL

Analysis of the trail and parking lot design has been under way and a decision is expected at the beginning of August. One design calls for an 80 car parking lot near the river bottom about 100 yards up from the electronic sign. This lot would include a bus turn-around. An interpretive center would be located at the upper end of the car lot.

Many people who wrote the district ranger with supportive comments did so in the belief that the parking lot was much smaller than proposed. Although the comment period is over, if you have feelings one way or the other about this project it might not hurt to express them.

THANK YOU NEIL HINKLEY

Neil Hinkley is the Club's representative on the City's Open Space Master Plan advisory committee. He has also been attending meetings regarding the Ensign Land Exchange and related trail access matters. Right now, the trail which leads through the old rifle and pistol range may be in jeopardy. The city planning department is being cooperative, but the developer wants to limit access and put up a locking gate across the trail.

Public comment concerning these matters was to have been taken at a meeting July 19th. A report on this meeting will appear in the September *Rambler*.

SALT LAKE COUNTY CLEAN AIR COALITION ANNOUNCES BENEFIT CONCERT

The newly formed Salt Lake County Clean Air Coalition will present a Benefit Concert next month as its first official fund raising event. The Salt Lake County Clean Air Coalition is an organization of concerned Salt Lake County citizens whose purpose is to raise awareness of clean air issues effecting Salt Lake County. The primary focus of the coalition will be to educate the general public on issues such as the PM-10 State Implementation Plan, Thousand Springs Power Plant, hazardous waste incinerators, transportation and all other aspects of air pollution.

The Benefit Concert will feature performances by the duet of Maggie Beers and Julie Mark, and individual appearances by Greg Scott and Andrew Larson. The concert will be held Sunday, August 19, 1990, 6:30 p.m. at the Red Butte Gardens. Tickets are \$5.00 each and are available at Smokeys, or at the gate the evening of the concert.

The Benefit Concert is being co-sponsored by Operation Earth, a Community Outreach Project of KUED-7, KUER FM-90 and KULC-9. Red Butte Gardens is located at the mouth of Red Butte Canyon which is south of the University Medical Center and east of Northwest Pipeline in Research Park. Shuttle service will be provided from the parking lot across the street from the Huntsman Center on the University of Utah campus to the gardens beginning at 5:00 p.m.

Contact:

Nina Dougherty - 581-8771
Ivan Weber - 521-6186
Karen Wildfoerster - 581-6625

HELICOPTER SKIING IN THE WASATCH

by Howie Garber

The Wasatch Cache National Forest has just issued a scoping document for a new heliskiing permit in the Ben Lomond Peak area above Ogden. This is a wonderful area for back country skiing with glades and short open slopes and moderate angles. The area is presently used by some Ogdenites and people from SLC willing to drive an extra 45 minutes. We've even seen some snowmobiles in the area. Have you skied or snowshoed in the Ben Lomond area? The Ogden Ranger District welcomes responses to the scoping document till August 10, 1990.

District Ranger
Ogden Ranger District
507 25th Street
Suite 103
Ogden, Utah 84401

(Reply to 1950)

How do you feel about heliskiing in general in the Wasatch? Powderbird Guide's Permit for heliskiing in big and little Cottonwood and Millcreek expires October 91. There will be an environmental assessment of heliskiing in the tri-canyon area during the next year. There is no question that Powderbirds contribute to the avalanche safety with their control work and presence in Silver Fork, Days Fork, Cardiff, Cardiac, Gobbler's, Mineral Fork, etc. They have also rescued back country skiers who have succumbed to injuries and avalanches.

Many people also feel that the Wasatch is already too crowded (Over 5,000 back country skiers sharing all of the best creme de la creme north facing powder bowls devoured by the elite and wealthy few.) Even if you hike 2 hours, the powder pick seems to get exceedingly small on a sunny day in February or March, or if it hasn't snowed in 4-5 days.

Have you experienced conflicts with the helicopter skiers? Has Powderbirds improved your back country experience? Do you feel

that a more equitable coexistence with Powderbirds is necessary or achievable?

The Forest Service will be sensitive to your input. Send your comments to the Salt Lake District Ranger, Mike Sieg and to the Wasatch Cache Regional Supervisor, Susan Giannettino and ask to be kept informed on this issue.

Mike Sieg
S.L. District Ranger
6944 South 3000 East
SLC, UT 84121

Susan Giannettino
Forest Supervisor
Wasatch Cache National Forest
8230 Federal Building
125 South State Street
SLC, UT 84138

ASAP!



POLITICAL COMMITTEE NEEDS ELECTION VOLUNTEERS NOW!

The Sierra Club Political Committee is preparing for the 1990 elections. The SCPC is the most effective environmental political group in the state and has played an important role in the last several elections. With the recent legitimization of the environmentalist ethic, we are being contacted by a large number of candidates and believe we can substantially increase the number of environmentally sensitive legislators. To do that we need volunteers. We will be conducting voter registration drives and working directly with a number of campaigns. Anyone interested in participating in some phase of this year's election effort should contact the Sierra Club Office, 177 E. 900 South, Suite 102, Salt Lake City, 84111, Attention: Political Committee. Telephone 363-9621.

FROM THE

LODGE DIRECTOR

by Vince Desimone & Kathy Klein

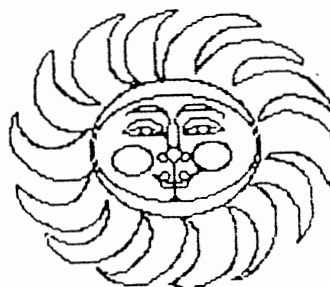
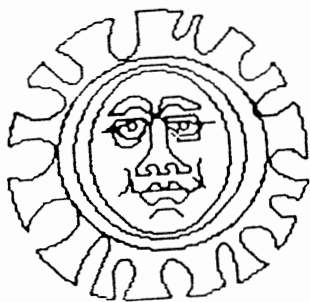
WORK PARTIES SCHEDULED AUGUST 4 AND 18

Our "second home" needs continuous work to keep it in good condition, clean and presentable for use by members and guests. No special skills are needed in order to participate in Lodge work parties. There are always plenty of things to be done and you can work where you feel you have the most talent and interest. Work parties start at 10 A.M. and continue as long as participants wish. Lunch is provided for workers. Most tools are provided; however, if you have a special hammer, rake or other tool, then bring it along.

Work parties are really a lot of fun and are satisfying. It's easy to get to know Club members when working along side of them.

If you are interested in helping out with any of the projects please contact Vince Desimone at 1-649-6805.

If you wish to schedule use of the Lodge for private functions contact Kathy Klein 272-8059. The club makes the lodge available at cost to non-profit community groups if sponsored by a club member.



AUGUST SKY CALENDAR

by Ben Everitt

MOON

Full Moon	Aug 6	Sept 4
Last Quarter	Aug 13	Sept 11
New Moon	Aug 20	Sept 18
First Quarter	Aug 28	Sept 26

MOONRISE

(times for 40 N, 112 W)

Saturday	MDT
Aug 4	7:30 PM
Aug 11	10:45 PM
Aug 18	4:00 AM
Aug 25	NOON
Sept 1	6:00 PM

Source: Astronomical Almanac for 1990

Note on moonrise times: Add an hour for each day later than the given date, and another hour if you are in the mountains.

PLANETS The bright planet preceding the sun in the morning sky is VENUS. The yellow planet in the southern sky (in Sagittarius) is SATURN. JUPITER, emerging from the glare of the sun, will begin to be visible in the morning sky in August, and will pass close to Venus on August 12.

And don't forget the August meteors. The perseids, one of the best and most regular of the annual meteor showers occurs around August 10.

FROM THE

BOATING DIRECTOR

FROM THE BOATING DIRECTOR

by Jeff Barrell

The Alpine training course scheduled last July was cancelled due to lack of a leader and lack of participants. Unfortunately, I received a number of phone calls at the last minute asking about the trip. The training course needs more coordination than a typical boating trip. One week before the trip, I had received only two phone calls, so I cancelled with the experienced boaters who offered to help (thanks to those people anyway). Please call ahead next time so we can make preparations.

It is too bad this trip did not go because now is an excellent time for beginners to learn. Flows are down and the water is warm and the weather pleasant. The Club is the only viable boating club in Salt Lake and we need to offer a trip to help beginners improve their skills. First timer kayakers however, should start on the Weber because the currents at Alpine are strong and can be overwhelming. It is also advisable to go with an experienced kayaker who can help you and keep you out of trouble.

There are a few trips scheduled in August (see activities) and some trips (like Alpine or Payette) that tend to pop together over the phone. These trips are loosely organized and people meet at a certain campsite with their own boats, food, and camp stuff. There is usually somebody up at Alpine every weekend, so keep in touch with Marlene or myself.

Over many years, I have noticed that Club boating trips sometimes seem completely disorganized. People stand around wondering what to do or waiting for someone to tell them what to do. This is a classic case of beginneritis - I don't know what to do, so I won't do anything. This is why we have problems finding leaders for beginner trips. There needs to be a knowledge transfer on all trips from the experienced boaters to the inexperienced. We need willing learners with

enthusiasm and questions, not complainers. The experience is there, usually, and they need to behave as teachers and managers. This is how the Club transfers knowledge to the next group who will be leading trips years from now.

This is the last year as boating director for myself and many of the coordinators. We will need to fill these slots next year, so think about it and try to learn what is involved while we are still active. It is a lot of work, but I have learned a great deal and feel good about the Club's boating program. You too can make a contribution and put back what you have taken.

FROM THE KAYAKING COORDINATOR

by Marlene Egger

Peak run-off is long gone, and the boating season is beginning to dwindle. Where can a person go who just got the hang of kayaking in July? Low water Lodore (II/III/III+?) and Westwater (III/III+/IV?) trips will be the chief WMC fare from here on out. Remember to look at Skull in low water, as the entrance is different, possibly trickier, now. Alpine Canyon can also be run, although it's colder and the ledges are closer to the surface. The old novice standbys, the Weber, Gray Canyon and the Moab "Daily" (Professor Valley) are also low but not impossible.

Roy Piskadlo will do a squirt boat clinic Saturday, August 4 at 10:30 at the West Table put-in for Alpine Canyon. He says it's free and you don't need to bring a squirt boat. The kayaking coordinator could possibly be persuaded to do an Alpine run August 18, depending on conditions and interest among the first year kayakers. Call my answering machine for short-notice trips and roll practices, or leave a message if you want your trip announced.

TRIP · TALK

ALPINE BOATING TRIP

June 22-24, 1990

by Jane Dyer

CAST OF CHARACTERS (and all of us are really characters) Martin Gregory - trip leader; Rip Johnson, Phyllis Papan - captains; Reid Thorley, Randy Klein - canoes; Jonathon Bird, Mike Dahlgren - kayaks; Dave Sterner, Kathy Reel, Federica Gallegos, Jane Dyer, Brian Sanders, Sondra Fraser, Bryce Nickisch, Dave Ritter - paddle boat crews.

ACT I SCENE 1 - VAN RIDE TO CAMP (is this like *Trip to Bountiful*?)

Expertly chauffeured by a deceptively quiet Jon, the van full of experienced and novice, American and Aussie, taciturn and loquacious set off - others in cars took the lead. After dinner at one of Evanston's finest gourmet restaurants, Hardys, we started the second leg of the carry. Our leader made sure the folks in the van knew the name of the campground (this is important in Scene 2). The cars being faster were expected to arrive first.

ACT I SCENE 2 - WE'RE LOST!

What the occupants of the van didn't know was that the small low campground sign was obscured by tall grass and no one in the van had been there before! While those in the cars arrived at a reasonable 11 P.M., the van (full of back-seat drivers) wandered about, lost in the dark, making several passes including, by then, a necessary gas stop in Jackson Hole! Finally, the entrance was found with a bleary-eyed Randy keeping watch. Tents were hastily erected and everyone fell into their bags. (One tent held an interesting assortment.)

ACT II - ON THE RIVER (like *On the Waterfront* only different). SCENE 1 - DAY ONE - water at 10-12,000 CFS.

With Federica in charge, a sumptuous breakfast spread was enjoyed by the group. Rip renamed the famous orange juice and peach schnapps drink a "Hairy Armpit"! Sounds great, doesn't it!

While rigging the boats, we learned the importance of pre-trip checking of equipment. We learned how to make a 20 foot Chicken Line from one thousand 12 inch pieces of rope. We also learned how to make two thwarts do for two paddle rafts instead of the usual four!

As you might guess, Lunchcounter was the most exciting rapid. We stopped for lunch there (appropriately enough) and scouted the rapids. Actually we spent more time just watching people flip. (Could it have had anything to do with our helpful folks yelling "Don't paddle, it helps if you don't paddle" to the boaters?) Mike and Martin were dubbed the "Golden Retrievers" as they rescued people and gear from the water gods. To say the least, Randy "ate his lunch" at Lunchcounter, perhaps setting a new record for the Long Distance Swim with Paddle in Teeth.

ACT II SCENE 2 - JEDEDIAH'S FEAST (almost as good as Babette's).

In our efforts to "get back to nature, rough it, commune with the woods, lead the simple life", most of the group decided to venture into Jackson Hole for fine food, fun, and spirits. On Phyllis' excellent recommendation, Jedediah's was chosen and it was a hit! While some complained of the lack of air conditioning (what didn't they complain about), the All-You-Can-Eat Ribs were superb. Some old and stodgy folks elected to return to camp to get some sleep. Other more adventurous (and younger at heart) folks headed to the Million Dollar Bar where Sondra (from Australia) was introduced to Rocky Mountain Oysters.

ACT III SCENE 1 - DAY TWO

Day two was, again, sunny and warm. Quiet Dave left camp and singlehandedly blew up both boats - what a man!! The "late nighters" were in charge of breakfast, but managed to struggle out of their bags and feed the hungry. With yesterday's experience under our belts, off we set. Champagne Rapids claimed Federica momentarily. Again we pulled out before Lunchcounter to enjoy the show and eat. Dave and Dave elected to swim the rapids in their wetsuits. As backup, Martin went

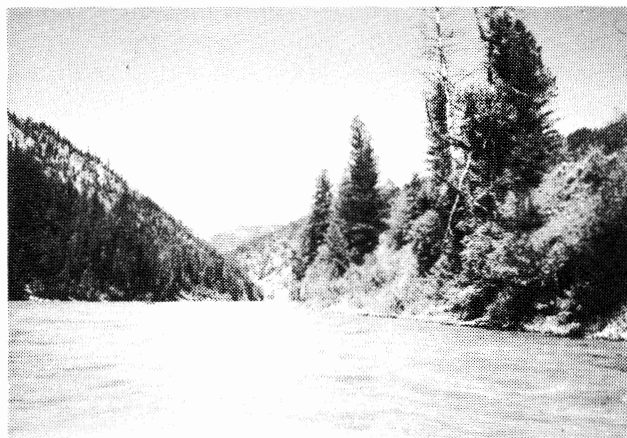
first. It was a surprise to see him flip - not once, not twice, but three times! Lunchcounter proved too much for Bryce and Phyllis and (there he goes again) Dave. Phyllis' directions of "This way- no that way" prompted her crew to turn to look at her which didn't help. Did that have anything to do with her swim?

ACT III SCENE 2

Take down and clean up went smoothly with many willing hands. Cars and van loaded, off we set. And once again, you guessed it, the van (or was it the occupants) became disoriented and was forced to stop in Evanston. A very different Jon drove with more jokes than anyone could remember. A late arrival in Salt Lake made for quick goodbyes. Good Luck in England, Sondra!!



Photos by Phyllis Papan



SUMMER CLEARANCE SALE

All raft & inflatables 10-30% off

All Perception kayaks 20% off

All accessories 20% off

Collapsible fire pan (fits in 22mm
ammo can) \$24.95

Sidsports 3300 S. 3025 E. 486-9424

GOBBLER'S KNOB VIA BOWMAN FORK HIKE

July 4, 1990
by Jack Turteltaub

A large group (23 people) led by Duke Bush spent a good part of the Fourth of July hiking this strenuous route to the top of Gobbler's Knob. What could be a more relaxing and inspiring celebration of Independence Day than a walk through a section of one of our country's great natural endowments: the mountains of the West?

The hike started in the well shaded, almost lush understory of plants and evergreen forest watered by Bowmans Fork, just above the Terraces picnic area of Millcreek Canyon. As we left the cool, moist forest, we hiked into lush, alpine meadows packed with wildflowers. The flowers were in their full glory and just waiting for some local Impressionist painters to transfer them to canvas. We saw pastel wild roses and geraniums, delicate blue bells and lupines, purple penstemons and sweetpeas, graceful white columbines, paintbrushes - both the more common orange and the lovely pink varieties, brilliant scarlet gillias, Van Gogh-bright yellow mules-ears, and purple thistles - to name only a few.

An unexpected revelation awaited three of us who stopped at a small trail turnout for a brief pause: an iridescent green hummingbird alighted just long enough on the branch of a small deciduous bush to startle us with its ethereal beauty.

The elevation gain is substantial but there can be no doubt about the ultimate reward for all that hard work. The panoramas from the top of Gobblers Knob are among the finest in the Wasatch. From the knob - a rocky outcropping on the peak's main ridge - there is a 360 degree view that takes in dozens of Wasatch peaks cloaked by vast green meadows punctuated with sparkling blue lakes and to the west, the Great Salt Lake Valley itself - dominated by urban sprawl and its blue inland sea.

After a leisurely lunch (except for a few folks who could not resist looking at each blossom on the way up and who had to eat fast to avoid being left behind), the group began its descent. It was a relief to return to the green canyon below, with the eager anticipation of cold beverages, barbecues, and fireworks temporarily distracting us from the unforgettable scenes and views above.



Photos by Leslie Mullins



MAYBIRD HIKE

July 7, 1990
by Cheryl Coultas

What does one write about a simple, moderate hike on an ordinary July Saturday? The weather was nice and cool, breezy; there were flowers galore, and the group included several wildflower experts to inform the uninformed about indian paintbrush, columbine, bluebells, polmonium, plutonium, ammonium ... Maria Anne reported that she saw a lot of daisies.

Actually the hikers were as memorable as the hike; there was the usual mix of Salt Lake newcomers, the University contingent, and the miscellaneous people that didn't talk much. Official hikers included Jeff McBride who came all the way from Soda Springs for a weekend of cultural entertainment in the big SLC; father and daughter team Richard and Laura Teerlink, resident wildflower experts; Randy Long, our fearless leader; Emil Golias, OSHA SWAT team member, who became famous in last month's write-up about the Yampa River trip; Mike Treshow, famous University botanist, who pointed out some of the more tasty edible fungi; Maria Anne Benincasa, a research chemist from Italy who is really into chromatography; and me, Cheryl Coultas, representing the commercial side of life - advertising.

Three hangers-on joined the group did not sign the official list, and therefore won't have the privilege of being immortalized in this report, but you may recognize one unnamed WMC veteran who wears yellow zippers sewed around the legs of her blue jean cutoffs.

All in all, Richard reported that it was "a group of intelligent, congenial and friendly people."

Maria Anne agreed, but said maybe it was "a bit too serious."

Emil gave "no comment" as he had already jackrabbed down the trail and had torn off in his red love van to the Snowbird Climbing Exhibition.

MOONLIGHT MADNESS

June 9, 1990
by Wick Miller

Saturday morning I arrive at a quarter to four; nobody in the parking lot. Five minutes till - still nobody, and I'm beginning to think I can leave and go back to bed. Then the headlights appear, one car after another. Eighteen of us start out in the light of the full moon, and shortly after 5:00 we are eating breakfast on top of Van Cott Peak, watching the moon set, and the eastern sky turn yellow and orange. At 7:00, we are back down in the parking lot, ready to put in a full day of what ever (including, I suspect in some cases, going back to bed). This is an event that should be repeated, but not too often.

BROADS FORK HIKE

Sunday, June 24
by Kimberly (Scoop) Curtis

Twenty four people turned out for the Broads Fork Hike led by Diane Little on June 24th. It was hot in the valley so we hoped for cooler temperatures in the mountains.

The hoards of wild flowers were out in full force; blues, purples, whites, and yellows all dotted the mountain slopes.

Snow was on some of the peaks, but it was quickly melting. During lunch at the foot of Twin Peaks we swapped rattlesnake stories, reminding us of the caution we must take while hiking.

Then: back down into the heat of the valley.

Participants: Kathy Splaine, Linda Kosky, Shirley Tegan, Ron Kosky, Jerry Niewerhaus, Jack Montgomery, George Kealy, Margaret Strickland, Sandra Montgomery, Patricia Briggs, Sarah Montgomery, Robert Turner, Maxine McWhorter, Valerie McWhorter, Lindsay Lynch, Chris Tepley, Jan Barbas, Sharon Eblen, Louise Rausch, Kimberly Curtis, Linda Patterson, Janet Chatwin, Duane Call, and John Shavers.

MAYBIRD LAKES HIKE

June 17, 1990
by Jack Turteltaub

A small group of WMC hikers, led by Floyd Meads, tackled the Maybird Lakes in absolutely perfect hiking weather: an almost cloudless lapis sky so blue it dazzled the eye and warm but not hot temperatures. Everybody met at the parking lot at the base of Big Cottonwood Canyon where the scene resembled a Sierra Club version of the Golden Horde - so many WMC hikers (meeting for three different hikes) that it was intimidating. Fortunately, these foot soldiers were only here to conquer the mountains and their armaments, consisting of assorted day packs, waffle boots, sunglasses, caps, visors, and bandannas, were nonlethal.

The hike begins from the White Pine parking area in Little Cottonwood Canyon. The outstanding feature of this late spring hike was water streams that were like gushing cataracts because of the recent rains and melting snowpack, and extensive snowfields, often concealing the trail, in the thickly wooded slopes on the final approach to the lakes. It was challenging to kick steps up the snow covered slopes. Several times, hikers found one leg disappearing as their weight broke through a soft spot in the snow. Fortunately there were no injuries. The spruce and pine scented woods were deliciously fragrant in the clear cool mountain air.

At last we came over the last snow covered rise to our destination. These are two half frozen ponds (the third and largest lake was completely covered by snow) lying in a basin full of big rocks and boulders below the awesome escarpment of the Pfeifferhorn - two long, jagged ridges extending from the enormous, rounded granitic mass of the peak. We had a delightful lunch in this bright, icy setting, some 9700 feet above sea level, braving cold gusts of wind when a breeze whipped across the lakes.

The return trip was again made interesting by snow fields. Several times people schussed down the slopes, until at last the trail was

found again. As we approached the trailhead, a veritable mob of non hikers trudged past us, including a rather tired looking, out of shape father carrying a folded baby carriage in one hand, a Coleman thermos in the other hand, and a baby in a pack on his back. Our daypacks seemed light by comparison. We could only breathe a sigh of relief that our earlier start had given us almost complete solitude on this deservedly popular trail.

Hikers: Knick Knickerbocker, Harold Goodro, Ray Williams, Richard Stack, Barbara Jacobsen, Bonnie Kay, Tack Turteltaub, and Leader: Floyd Meads.

SALT LAKE OVERLOOK HIKE

A STORY OF ENDLESS SWITCHBACKS

Saturday, June 9, 1990
by Randy Long

The *Rambler* rated this hike at 3.0, and stated that there would be an easy pace on this very gradual trail. *Hiking the Wasatch* says that this trail has "endless switchbacks", and the leader describes it as very easy and undulating, and thinks switchbacks should never be considered endless as they add more fun to the trip, (you can count them to yourself). *Hiking the Wasatch* is right on everything else though, and not everybody agrees with everything.

This was an easy hike in tall pines most of the way with - yes - plenty of switchbacks, and a slow pace, which - except for two that turned back - managed to keep the group together. That is: even though The Beatout Hike was the very next one on the *Rambler* list, and Wildcat Ridge was on the opposite page, and both are obviously far more strenuous.

But not all hikers are good enough for the "tuffies", (which dwarf Salt Lake Overlook in a way), and all that went really enjoyed it.

There were eight participants all together. They were: John Arnold, Monica Arnold, David Boyd, Mendel Cohen, Ruth Nakamura, Ann McDonald, Barbara Rex, and Randy Long, leader and scribe.

LAKE LILLIAN HIKE

Sunday, July 1, 1990
by Renae Trask

Leslie Woods, hike leader, decided to start this hike early (8:30 A.M.) to "beat the heat." The weather aided in this goal by being slightly overcast. This was important as the Lake Blanche trail is none too shady.

The main group stuck together all the way to the top (Lake Blanche) with only one stop at midpoint. Once there, we sunned on the rocks along with the ants and passed the time with a "Rangerette" until Leslie Mullins and family (joined by Norm Fish) arrived. Then we walked over to view the falls and have a snack at Lake Lillian, our "real" destination.



Photo by Leslie Mullins

After the hike, a BBQ for hikers only was given at Barbara Jacobsen's house. We all tried our skills at badminton after a short rest period to regain energy. Kyle Williams brought out his proverbial guitar to sing about how sad it was the hike was over (or was that the one about changing the old lightbulb?). The group joined in on only one song, "Oh Lord It's Hard To Be Humble." This surely means we were all "perfect in every way" .. at least, until the jokes started! What was that about a groundhog? (Ugh!) Anyway, the party ended when the jokes dried up and people started falling asleep (at least I did). Thanks Leslie and Barb for a great summer day!

Humble Hikers: Kim Thomas, Magdaline Quinlan, Steve Glasen, Shirley Tegan, Johnnie Peters, Joan Proctor, David Burt, Kyle Williams; Leslie, Casey, and Emilie Mullins, Claudia Martinez, Jaush Way, Chris Benson, Duane Call, Leslie Woods, and humbly yours, Renae Trask.



702 THIRD AVE
533-8671

MOUNTAIN BIKING? WE DO IT!!

IT'S THAT SIMPLE. IF YOU'RE LOOKING FOR A MOUNTAIN BIKE AND PLAN ON RIDING IT IN THE DIRT, WE'RE THE PEOPLE TO SEE. WITH LINES LIKE **PAT CHANCE, FISHER, MARIN, IBIS, BIANCHI, MOUNTAIN GOAT, MERLIN, BONTRAGER, KONA AND HARO** ALL UNDER ONE ROOF, YOU CAN SPEND MORE TIME TEST RIDING AND LESS TIME DRIVING FROM SHOP TO SHOP.

KNOWLEDGE AND PRICES?

FIND SOMEONE WHO RIDES OR RACES A MOUNTAIN BIKE AND **ASK THEM ABOUT US.**

PARTS AND ACCESSORIES?

WE'VE GOT LOTS OF THEM. NOT JUST BREAD AND BUTTER SHIMANO, BUT TRICK STUFF LIKE COOK BROS., BULLSBYE, WTB, SALSA, EXOTIC WHEELOODS AND A WALL FULL OF KNOBBY TIRES.

REPAIRS? WE DO THEM RIGHT!!

AND USUALLY OVERNIGHT. NEED A WHEEL BUILT TODAY OR A QUICK TUNE BEFORE A TRIP TO THE DESERT? **GIVE US A CALL.** WE DON'T HIRE SALESMEN, **EVERYONE WHO WORKS HERE IS A MECHANIC.** **WE LOVE BIKES AND THE PEOPLE WHO RIDE THEM.**

IT'S THAT SIMPLE.

TERRACES TO ELBOW FORK VIA BOWMAN TRAIL & RETURN

June 9, 1990
by Helene Pihlkar

June 9th was a perfect day for a hike. Fourteen participants with varying levels of hiking experience started out "for fun and a little bit of exploration on a very easy hike" with Duane Call. We walked approximately a mile up Bowman Fork trail and after a few brief stops to enjoy the natural beauty, headed left (no compass available) after a steep climb, and started on "an old mountain man trail."

Vince, who was carrying a small cooler, forged through downed trees and brush and moved faster than anyone else (in anticipation of enjoying the contents of the cooler?) and picked up the nickname of "Teddy Roosevelt". Christine, who was following closely behind, was dubbed "Mrs. Teddy Roosevelt - whatever her name was." [Ed. note: it was Edith]

The old mountain man cabin, only half finished, was the impetus for the group's progressive story, the contents of which probably cannot be printed here, but it had something to do with an outlaw and the cultivation of a certain crop. After hearing a few bear stories, we proceeded quickly down the Terraces trail to the road and crossed to the Pipeline trail.

At this point Duane informed the group that WMC members were well known in the area, and respected by him, for keeping trails clean; not only packing out what we pack in, but also picking up debris along the way. Quite a few of us picked up "respect chips" along the way to cash in at the end of the hike.

A variety of wildflowers was seen during the hike, particularly on the Pipeline trail portion. Unfortunately, no one had a Field Guide at the time to identify all the flowers., but some included clematis, Indian paintbrush, serviceberry, mountain dandelion, and lilacs. Some flowers appeared to be professionally landscaped into rocky sides of the mountain - an impressive sight!

The pipeline trail provided a small yet cozy lunch area for the group. This portion of the trail appeared to be popular for bicycles and dogs, and their passage along the trail and through the group allowed the lunching hikers the chance to bend and stretch their knees a few times. After lunch the group hiked back down to the road, past the old power station foundation and the ranger station, picked up some debris along the way and cashed it in with Duane at the end of the hike.

All of the participants of this outing were more than pleased to have such an interesting and knowledgeable leader and we thank him again.

Participants included: Mark Jones, Ron Thole, Maria Jensi, Helene Pihlkar, Merrilee Cloward, Carol Holmes, Lorraine Rice, Vince Desimone, Chris Allred, Mary Anne Farrier, Evelyn Clayton, Amy Morton, Sandy Dickinson, Frank Bacon, Duane Call.

REYNOLDS PEAK HIKE

Saturday, May 19
by Janet Chatwin

What started out to be a dark, cloudy day, turned into a beautiful, sunny one. We all made it to different destinations: Mark and Duane turned around at Dog Lake. Norm was up and back before any of us made it to the top. Because of the snow cover, Bob, our leader, and Vince were the only ones to make it to the tip top. They had to labor through snow up to their ____! Hank and I went around the snow and found a dry little place, close to the top. We watched Ganesh work his way through the snow only to turn back and find a dry, sunny place below. It was a wonderful hike, enjoyed by all.

Participants: Ganesh Gopala, Vince Desimone, Duane Call, Norm Fish, Hank Winawer, Mark Bertelson, Janet Chatwin.

LAKE BLANCHE HIKE

May 19, 1990
by "Sumpur Sucker"

Twelve hikers started this hike under threatening skies, but the blue began to show through as they ascended Mill B South fork. The trail was surprisingly dry for this early date, and also free of snow until the final hundred yards or so before the lake. Some of nature's creatures were seen on the way up: a cold and slow Rubber Boa snake that got surprised in the middle of the trail; a downy woodpecker who tapped a tattoo on a dead aspen; and a group of boy scouts who, we were advised, were trustworthy, loyal, etc., and chaste.

The lake was found with ice still covering a portion of its area. The hikers found a sheltered spot where they could sit in the sun while enjoying lunch, the view, and good companionship. After lunch most walked over to see the other two lakes, then gathered to start the descent. At this point Rob Rogalski suggested (demanded?) we pick up trash on the way down. All agreed and the great trash collection began. Many plastic shopping bags were filled with cans, bottles, a galvanized steel coffee pot, two diapers (loaded) and various other detritus left by the hiking public. Much of this debris would not have been seen had the brush had time to sprout its leaves. The obvious conclusion is that the best time to schedule trail clearing hikes is early in the season before the leaves appear.

The hikers on this trip were: George Swanson, Cristel Sysak, Gustavo Ducoulombier, Scott Adkins, Louise Rausch, Karen Perkins, Suzi Smith, John Riley, Robert Rogalski, Joan Proctor, and Allene and Charles Keller.



Photos by Leslie Mullins



NEW TRAILS FOR UTAH

by John Knudson

Would you like to hike, ride your mountain bike or horse, or nordic ski in the winter along the river up Provo Canyon to Heber City? How about from Park City to the Spring Chicken Inn in Wanship for brunch, or from a Jordanelle overlook down along the river to Deer Creek? What about traveling from the Homestead to Sundance, or the reverse?

For years many people have dreamed of a system of multi-use recreational pathways, close to the Wasatch Front, connecting urban centers with rural communities, National Trails, National Forests, state parks and recreation areas. Besides offering a quality experience for local or out-of-state hikers, bikers, horseback riders, and skiers, a system of public trails and greenways should provide increased economic benefits, as well as new and expanded business opportunities.

This dream can become a reality with your help. The following separate projects, currently in various planning stages, have the potential to be linked together to create a fantastic non-motorized trail network.

The first section of this trail system is in lower Provo Canyon. The Utah Department of Transportation has agreed to build a trail from the Murdock Diversion to Vivian Park when they realign Highway 189 in this area. When completed, this portion will link Utah Lake and the city of Provo via public trail to the mouth of Provo Canyon.

From Vivian Park up the canyon to Deer Creek is the next and perhaps the most critical section. Currently there have been no firm commitments to build a public trail through this area.

Plans are being made to create a public access corridor from Deer Creek to Jordanelle Dam along the Provo River. This project is in association with Jordanelle Reservoir construction.

As the reservoir is built and the new Jordanelle State Park developed, a system of trails around the lake and connecting Park City will be developed.

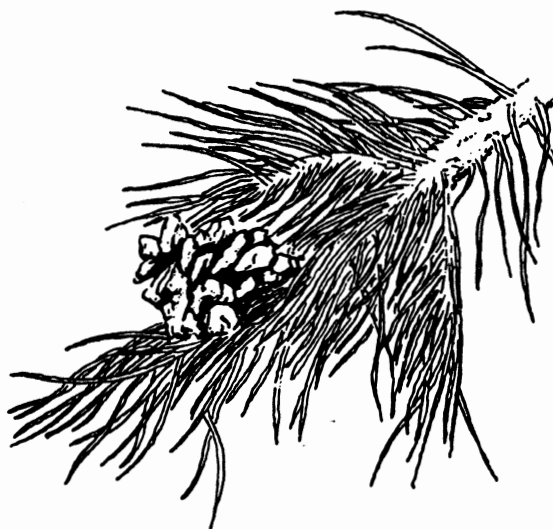
From Park City, passing through Wanship, Coalville and on to Echo Junction, Utah's first rails-to-trails conversion is being planned. This trail will link Summit and Wasatch counties.

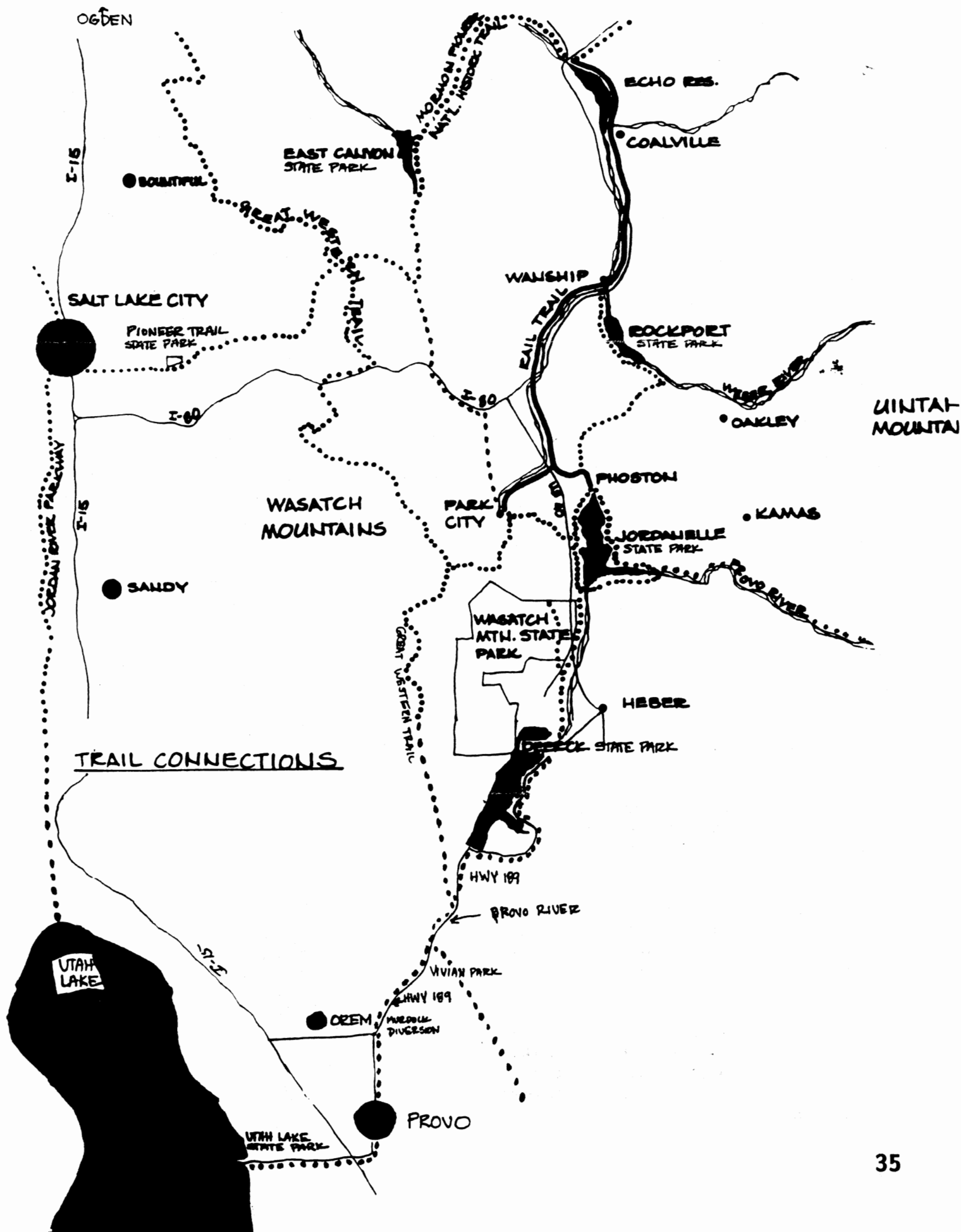
These projects could provide the backbone for a regional trails network that could link Ogden, Salt Lake, and Provo directly to the high country recreational opportunities of the Wasatch Mountains.

The northern portion of this network still needs a bit of work. From Echo Junction and Hennifer one could travel on portions of the Mormon Pioneer Trail looping back to Park City, or to Salt Lake via Emigration Canyon.

If these trails are to become a reality it is important that citizens, user groups, local, state, and federal officials and representatives show their support for each individual project as well as the continuous regional trail concept. Follow each project's progress in the media, attend public meetings and voice your support, write and/or call project planners, mayors, and elected representatives.

For further information call 538-7344.





SECOND ANNUAL BLUEBELL HIKE UP TOLL CANYON

June 16 & 17, 1990
by Federica Gallegos

Once again we would like to give a heart felt "Thank You" to Audrey and Don Kelley for being such gracious hosts. We were also met at the door by Bill and Flossy who made sure we all felt at home.

They had well over a hundred guests. We wine and dined on a huge buffet and many exotic and colorful desserts. The evening was filled with good company, good conversation, and ended with a bang! i.e. fireworks.

Those who did not want to muster the energy to drive back up the canyon in the morning were privileged and honored to spend the night in front of the fire or under the stars. We woke up to the smell of fresh perked coffee, hot ham, fresh baked pastries, fresh fruit and Audrey's smiling face.

We were joined later by our hike leader John Riley and a dozen anxious hikers to tackle the Second Annual Bluebell Hike up Toll Canyon. Those more ambitious went on to Murdock Peak.

For those that completed the hike, Audrey had outdone herself with another scrumptious feast and homemade Sangria! Que Bueno!

Participants were: Our fearless leader John Riley, Federica Gallegos, Phyllis Papan, Ilona Hruska, Micheal Budig, Bob Weirick, Mark Swanson, Gudrun Anderson, Trevor Anderson, Duan Anderson, Duane Call, Phyllis Robinson, Colene Bertelsen, Jerry Hatch, Rick Kirkland, and Connie Mac Kay.

Audrey, we would like to thank you again and wish you Good Health!



Photo by Phyllis Papan

DOUBLE SLEEPING BAGS

(FOR THOSE NOT DEDICATED TO
ISOLATED SUNNY MEADOWS)

by Brooke Jennings

A dedicated double sleeping bag has several advantages over make-shift improvisations.

Two mummy bags can be zipped together. However this places a zipper in the middle of the sleeping surface beneath you, and severely limits ventilation options by placing the upper zipper in the middle of the bag between you. (The old center zipper design for mummy bags was abandoned years ago with good reason.) The two side zippers of a true double bag allow two people to independently adjust ventilation and warmth, and provide a smooth sleeping surface beneath you.

Two rectangular bags can be opened and zipped one above the other to provide the same advantages, but this system is unnecessarily bulky and heavy to carry. A better solution is to zip a light uninsulated ground sheet under a single semi-rectangular bag. This system, used with an insulating foam pad such as a Thermarest, is entirely satisfactory down to temperatures somewhat below freezing, such as may be encountered in high Western mountains in the summer, or the desert in the Spring or Fall. It can even be adapted for sleeping on snow. It also has the great advantage of permitting the bottom of the bag to be zipped off and thrown in the washing machine when soiled. However the only such systems I have been able to find commercially available are still improvisations, and not entirely satisfactory despite their considerable expense.

If you know of any source of a satisfactory down double sleeping bag, production or custom, please let me know (phone number below). I will share anything I learn with anyone who is interested.

I have found a firm in Seattle which is willing to make a dedicated double sleeping bag on a custom basis. Not surprisingly, the cost for

one would be very high. However that cost would come down considerably if several were ordered at once. As few as three would bring the cost down to that of any competitive system I have found so far. And they are fairly flexible. Once the basic pattern is created, individual copies could vary in fabric, loft, even length and width.

If you would be interested in getting a down double sleeping bag, call Brooke Jennings at 583-5331. I will let you know of any sources of production bags I may discover, or we may go in together to reduce costs on a custom order.

New Members:

The Wasatch Mountain Club welcomes these new members. We wish you great fun, new friends and learning.

Dave Ritter
Jane Dyer
Reed Thorley
Michael Dahlgren
Joan Hadley
Karen Deibert
Mary Donley
Raymond Donley
Daniel Bertch
Kevin Thomason
Margo Adamson
Douglas Green
Alan Brennan
Hugh Heinsohn
Linda Kosky
Ron Kosky
Amanda Sarwacinski
Marcia Hansen
Ruth Nakamura
Toni Hepworth
Jan Speicher
Linda McClure
Knick Knickerbocker
John Arnold
Monica Arnold

Brian Bastian
Donna Bastian
Merrilee Cloward
Bernadette Martinelli
Joseph Martinelli
Kim Peterson
Judy Malone
Susan Lynn
Jill Crooks
Greg Tippets
Clark McCune
Diann Stewart
Johnie Peters
Jack York
Laura Teerlink
Doug Perkins

Reinstatements:

Susan Landau
Patricia Smith
Maria Benincasa
Neil Rutand
Ray Wenger

CLASSIFIED ADS

AD POLICY

Members may place classified ads for used sports equipment free of charge. Other classified ads require a \$5.00 donation to the WMC for up to 20 words with \$.20 per word over 20. Words of 2 letters or less will not count as a word.

NOTICE!

Send your ad (with a check enclosed if it is not a used sports equipment ad) before the 13th of the month to Sue DeVall, 11730 South 700 West, Sandy UT 84070 or call Sue at 572-3294 for information.

The Rambler cannot accept any ad that is inconsistent with the purposes of the WMC, or that offends the sensibilities of club members.

PETS

Free to good home: adult BLACK LAB-SPRINGER mix - brother and sister to stay together, both neutered. Call Jack or Eva McLellan, 295-9741

HOUSING

MOUNTAIN CABIN near Wanship: 1 hour drive in summer, 40 miles + 5 mile ski tour in winter. Nearly finished, livable as is. Electricity installed, underground lines: water rights, septic tank. 2 Bdr, bath, 3 decks. June Viavant 278-0565.

ROOMMATE WANTED: 1 or 2 adults to share a luxury home on a 7 acre horse farm in Draper. \$360 for one, \$240 for 2. Share utilities. Pets welcome. Call Sue at 572-3294.

HOUSEMATE WANTED. Near Liberty Park. Large older home, covered parking, fenced yard, pets ok. Non-smoker. \$195 + 1/2 of utilities. 485-1483

RESPONSIBLE ROOMMATE WANTED: to share my home, non-smoker, Holladay area, \$250/month + 1/2 utilities & \$250 deposit. Call Kathy for appointment 272-8059.

USED EQUIPMENT

TENT. Sierra Designs Meteor Light. 2 person, 5 lbs 12 oz. 40 sq ft. Easy to pitch. Never used. New \$220, Sale \$150. 572-3294.

SOLO WHITEWATER CANOE. Mohawk Scamp. 14 ft long. Like new, \$450. Gary at 255-2295.

UNIVEGA ALPINE SPORT MTN BIKE. Bottle cage, toe clips, rear rack: \$250. 277-3882 afternoons.

BACKPACKING STOVE. Peak 1 Coleman: \$30. Paul 277-2952.

KAYAK. Whitewater Perception Mirage. Great condition \$300 or best offer. Paul 277-2952.

WETSUITS. Both small. 1/8 " farmer john, \$25, 1/4 " full wetsuit, lined: \$50. Paul 277-2952.

WHITEWATER RAFT. Achilles 13'9", heavy duty wrap-up floor, complete with rowing frame, four oars, decks, lots of extra D-rings, ethafoam floor, protection pad, and bowline. \$1,250.00. Sandy or Geoff 485-5989.

VERNER 204 CM KAYAK PADDLE. 486-1476.

WANTED

USED SCUBA DIVING GEAR. Looking for used vc's and regulators. Call Bob Sherer 967-0218.


DOWN DOUBLE SLEEPING BAG: If you want one, or know where to get one, please call Brooke Jennings at 583-5331.

1990-1991 GOVERNING BOARD

President	John Veranth	278-5826
Secretary	Jim Elder	943-3321
Treasurer	Cynthia Anderson	359-8823
Membership	Julie Ann Jones	278-4753
Boating	Jeff Barrell	278-3510
Conservation	Janet Friend	268-4102
	Keith Johnson	268-2453
Entertainment	Marc Hutchison	355-3227
Hiking	Jerry Hatch	467-7186
	Gene Wooldridge	973-8073
Lodge	Vince Desimone	1-649-6805
	Kathy Klein (Rentals)	272-8059
Mountaineering	Tony Thompson	363-9891
Publications	Pat Beard	596-8099
Ski Touring	Norm Fish	964-6155
Information	Barbara Jacobsen	943-3715
	Aaron Jones	467-3532
COORDINATORS		
Bicycling	Rich Gregersen	467-6247
	Nance Randall	485-1483
Canoeing	Kathy Klein	272-8059
	Randy Klein	485-3360
Kayaking	Marlene Egger	277-2894
Sailing	Vince Desimone	1-649-6805
Rafting	Lidia DiLello	943-3321
	Jim Elder	943-3321
Volleyball	Doug Stewart	269-1833

TRUSTEES

Karin Caldwell	942-6065
Dale Green	277-6417
Milt Hollander	277-1416
Alexis Kelner	359-5387
O'Dell Peterson	Trustee Emeritus
Dale Green	Historian



Windows

Charles Lesley

364-2486

Washed

Commercial
Residential

WMC Member

WASATCH MOUNTAIN CLUB

APPLICATION FOR NEW MEMBERS/REINSTATEMENT FOR PREVIOUS MEMBERS
RAMBLER SUBSCRIPTION QUALIFICATION FORM

DO NOT USE THIS FORM TO RENEW YOUR MEMBERSHIP

Please read carefully and fill out completely. Your signature is required.

APPLICANT'S NAMES: _____

ADDRESS: _____ CITY _____ ST _____ ZIP _____

HOME PHONE _____ DAY PHONE _____ BIRTH DATE _____

I hereby apply for ☐ NEW MEMBERSHIP ☐ STUDENT
☐ SINGLE membership in the WMC
☐ REINSTATEMENT ☐ COUPLE

I ☐ DO
I ☐ DO NOT wish to receive the *Rambler* (the WMC publication). Subscription price
is not deductible from the dues.

Enclosed is \$ _____ for one year's (Mar 1 19__ to Feb 28 19__) dues and application fee.
*** Make checks payable to Wasatch Mountain Club (CHECKS ONLY) ***

Remit: \$20.00 for student membership (\$15.00 dues and \$5.00 application fee)
\$30.00 for single membership (\$25.00 dues and \$5.00 application fee)
\$40.00 for couple membership (\$35.00 dues and \$5.00 application fee)
(NOTE: These rates include the \$12.00 for the *Rambler* subscription)

YOU MUST COMPLETE THE FOLLOWING FOR MEMBERSHIP CONSIDERATION
THE ACTIVITY DATES MUST HAVE BEEN WITHIN ONE YEAR OF THIS APPLICATION

qualifying activity	date	signature of recommending leader
1. _____	_____	_____
2. _____	_____	_____

I agree to abide by all the rules and regulations of the WMC. I am 18 years of age or older.
I am willing to serve the WMC in the following areas: (please check)
☐ Service Project ☐ Lodge work ☐ Conservation ☐ Rambler ☐ Thurs Night Hikes
☐ Hike Leader ☐ Boat Leader ☐ Ski Leader ☐ Social Assist

I found out about the WMC from _____

APPLICANT'S SIGNATURE: _____

MAIL APPLICATION AND CHECK TO: MEMBERSHIP DIRECTOR
WASATCH MOUNTAIN CLUB
888 SOUTH 200 EAST, SUITE 111
SALT LAKE CITY, UTAH, 84111

LEAVE BLANK

Receipt #: _____	Date Received: _____	Amount Recv'd: _____
(or check #)		(less application fee)
Board Approval Date _____		(Rev 7/88 Pub 8/90)

IN CASE OF EMERGENCY PLEASE NOTIFY
THE SALT LAKE COUNTY
SHERIFF'S OFFICE AT:

535-5855

OR THE APPROPRIATE EMERGENCY
AGENCY IN YOUR LOCATION.

WASATCH MOUNTAIN CLUB
888 SOUTH 200 EAST, SUITE 111
SALT LAKE CITY, UT 84111

8/90

SECOND CLASS
POSTAGE PAID
SALT LAKE CITY, UT
NO. 053410