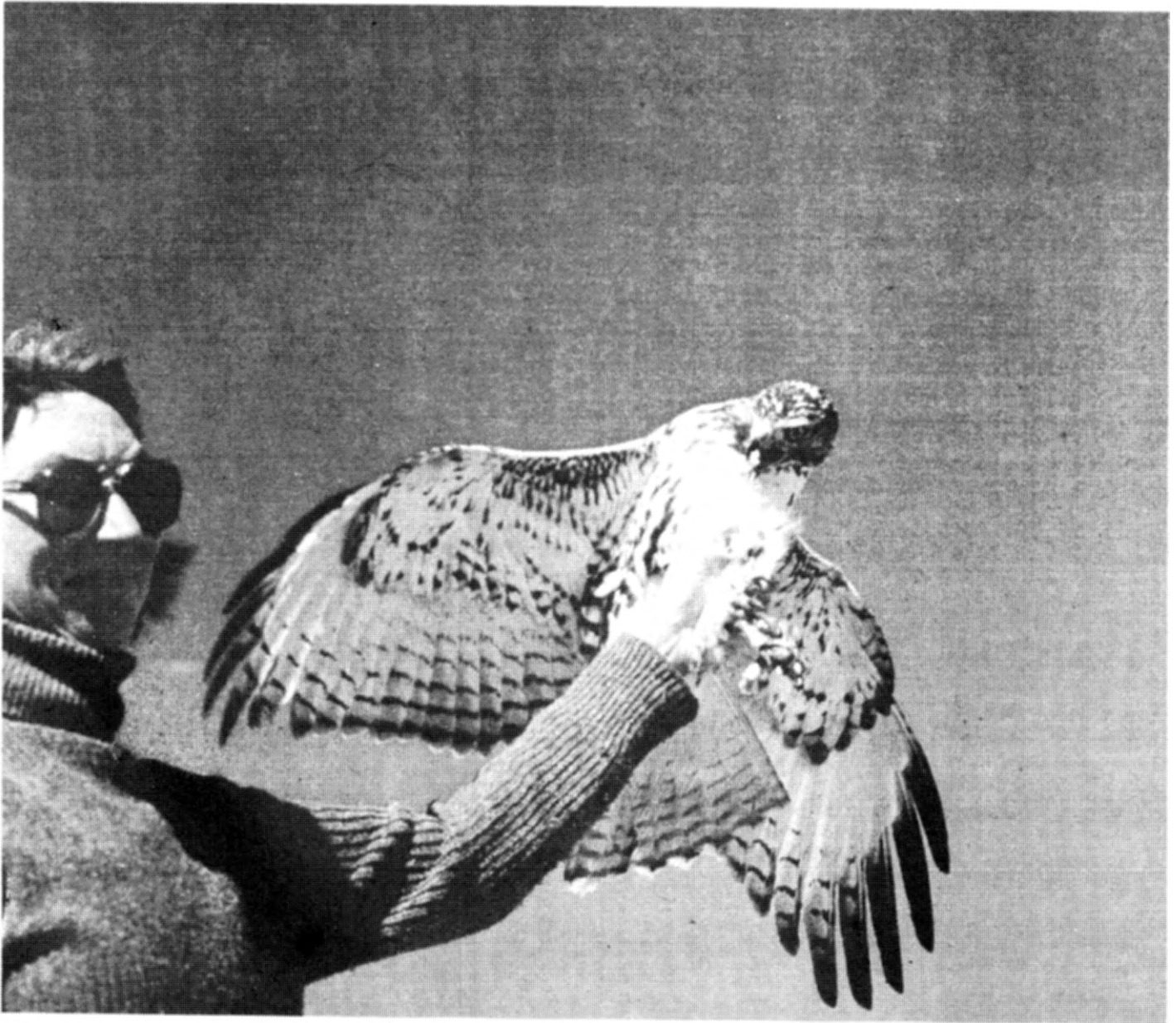


The Rambler

Wasatch Mountain Club

DECEMBER



VOLUME 67, NUMBER 12, DECEMBER 1990

Membership List removed from on-line version

The Rambler

Pat Beard, Managing Editor

ADVERTISING: Jill Pointer

ART: Kate Juenger

CLASSIFIED ADS: Sue De Vail

MAILING: Rose Novak And Mark Mckinzie

PRODUCTION: Pat Beard, Geoff Freethey, Sandy Freethey, Steve Krueger, Jill Pointer, Magdaline Quinlan

SKY CALENDAR: Ben Everitt

TYPING COORDINATOR: David Vickery

TYPISTS: Diane Little, Phyllis Papan, Clari Powers

THE RAMBLER (USPS 053-410) is published monthly by the WASATCH MOUNTAIN CLUB, Inc., 888 South 200 East, Suite 111, Salt Lake City, UT 84111. Telephone: 363-7150. Subscription rates of \$12.00 per year are paid for by member ship dues only. Second-class Postage paid at Salt Lake City, UT.

POSTMASTER: Send address changes to THE RAMBLER, Membership Director, 888 South 200 East, Suite 111, Salt Lake City, UT 84111. CHANGE OF ADDRESS: This publication is not forwarded by the Post Office. Change of Address should be submitted in writing to the Membership Director, 888 South 200 East, Suite 111, Salt Lake City, UT 84111. All correspondence regarding the mailing of THE RAMBLER should be directed to the Membership Director at that address. Allow 45 days for address changes.

The right is reserved to edit all contributions and advertisements and to reject those that may harm the sensibilities of WMC members or defame the WMC.

Copyright 1900, Wasatch Mountain Club.

DECEMBER 1990 TABLE OF CONTENTS

Events At A Glance	4
Activities	5
Sky Calendar	16
Trip Talk	39
Classified Ads	46

COVER PHOTO: Goshute Mountains Backpack,
by Eliot Mott

RAMBLER INFORMATION

IF YOU HAVE MOVED: Please notify the WMC Membership Director, 888 South 200 East, Suite 111, Salt Lake City, UT 84111, of your new address.

IF YOU DID NOT RECEIVE YOUR RAMBLER; Contact the Membership Director to make sure your address is in the Club computer correctly.

IF YOU WANT TO SUBMIT AN ARTICLE: Articles, preferably typed double spaced, must be received by 6:00 pm on the 15th of the month preceding publication. Mail or deliver to the WMC office or to the Editor. Include your name and phone number on all submissions.

IF YOU WANT TO SUBMIT A PHOTO: We welcome photos of all kinds: black & white prints, color prints, and slides. Please include captions describing when and where the photo was taken, and the names of the people in it (if you know). **Photos will not be returned unless requested and accompanied by a self-addressed stamped envelope.**

DEADLINE: Submissions to THE RAMBLER must be received by 6:00 pm on the 15th of the month preceding publication. Mail or deliver to THE RAMBLER office or to the Editor. Include your name and phone number on all submissions.

THE RAMBLER

THE RAMBLER, the official publication of the Wasatch Mountain Club, is published monthly by and for its members. Persons wishing to become members may receive THE RAMBLER for two months by writing the Membership Director, 888 South 200 East, Suite 111, Salt Lake City, UT 84111 and enclosing \$3.00. Checks are to be made payable to the Wasatch Mountain Club. There is a \$10.00 charge for returned checks.

WMC PURPOSE

(Article II of the WMC Constitution)

The purpose shall be to promote the physical and spiritual well being of its members and others by outdoor activities; to unite the energy, interests and knowledge of students, explorers and lovers of the mountains, deserts and rivers of Utah; to collect and disseminate information regarding the Rocky Mountains in behalf of science, literature and art; to explore and picture the scenic wonders of this and surrounding states; to foster awareness of scenic beauties; and to encourage preservation of our natural areas including their plant, animal and bird life.

Cross Country Ski Quiz

1. WHAT IS SIDECUT?
2. HOW ARE "SNAKE SKINS®" USED IN CROSS COUNTRY SKIING?
3. HOW ARE "THREE PINS" USED IN CROSS COUNTRY SKIING?
4. WHAT IS "SPLAY"?
5. HOW DO YOU FIND THE "WAX POCKET" ON A CROSS COUNTRY SKI?
6. IN TELEMARK RACING IS THE RACER REQUIRED TO PASS THROUGH THE GATE IN A TELEMARK TURN?

SCORE ONE POINT FOR EACH CORRECT ANSWER

If Your Score is 5 to 6 Points

VISIT KIRKHAM'S IMMEDIATELY! You obviously know a lot about Cross Country Skiing, therefore you can benefit from our selection of the most technically advanced skis and boots for telemarking, skating, and touring. We offer professional mounting service, as well as expert advice on ski performance, boot fitting, and more.

If Your Score is 3 to 4 Points

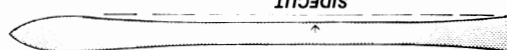
VISIT KIRKHAM'S IMMEDIATELY! You have a better than average knowledge of Cross Country, and Kirkham's can help your gracefully move from better than average to superior — in knowledge AND equipment. Lots of mildly active cross country skiers are becoming extremely avid by upgrading to higher performance equipment, especially with the new boot/binding systems available. Kirkham's staff can show you how to make a very good sport extremely great!

If Your Score is 0 to 2 Points

VISIT KIRKHAM'S IMMEDIATELY! Don't feel bad! With this score, you're probably still in the majority! To most people, Cross Country skiing is still a relatively new and sometimes misunderstood sport. If you're interested, it's even more important to start out with the right advice and equipment. Kirkham's offers outstanding packages for beginners at very attractive prices! Good quality usually only costs a little more, and makes your time outdoors a lot better! Kirkham's also offers reasonably priced rental and demo packages so you can try before you buy!

ANSWERS

1. The difference in width between the shovel and waist of the ski.
2. It is a synthetic strap attached to the ski to enable one to climb steep terrain without slipping.
3. The pins protrude from the binding and fit into holes in the boot to keep it in place and from moving side to side.
4. The area of the ski that curves upward from the shovel to the tip.
5. Stand on the ski and apply even pressure in the center-portion not touching the floor allowing for a piece of paper to slide under in the critical waxing area.
6. No. The turn must only be initiated before passing through the gate.



 **Kirkham's**
Cross Country Ski Center



3125 South State 486-4161 Open Monday-Thursday 9:30 to 8:00 Friday to 9:00 Saturday to 6:00

EVENTS AT A GLANCE

December

January

BIKE RIDES

1 Wallsburg

SKI TOURS

1 Norway Flats	15 Leader's Choice
1 Leader's Choice	15 Twin Lakes Pass
2 Catherines Pass	15 Powder Park #1
2 Scotts Pass	15 Catherines Pass
2 Leader's Choice	15 Ogden Valley
8 Grizzly Gulch	16 Leader's Choice
8 Desolation Lake	16 Willow Lake
8 Leader's Choice	16 Teach & Tour
9 Scotts Pass	16 Grizzly Gulch
9 Greens Basin	16 Brighton
9 Leader's Choice	22 Dog Lake

22 Box Elder
23 Days Fork
24 Powder Park
24 Scotts Pass
25 Catherines Pass
29 Snowbasin
29 Silver Fork
29 Mineral Fork
30 Cardiff Basin
30 Neffs Pass
30 Pfeifferhorn

1 Lake Mary	13 Teach & Tour
5 Soapstone Basin	13 Big Elk Lake
5 Willow Lake	13 Red Pine
5 Powder Park	13 Lake Blanche
5 Cardiff	19 Avalanche Clinic
6 Ski Clinic	19 Millcreek Road
6 Desolation Lake	19 Upper Greens
6 Reynolds Peak	19 Powder Park #2
6 Thunder Mt	19 Bountiful Peak
12 Telemark	19 Leader's Choice
12 Catherines Pass	20 Greens Basin
12 Wolverine	20 Quarry Mt.
12 Guardsman	20 Leaders Choice
13 Toll Canyon	20 White Baldy
13 White Pine	

SNOWSHOEING

2 Leader's Choice	9 Scotts Pass
	15 Silver Fork

22 Leader's Choice
29 Leader's Choice

6 Leader's Choice

SOCIALS

24 Lodge Party	31 Dinner &
25 Dinner	Dancing

12 Nominations
Banquet

VOLLEYBALL

(Monday evenings at 6:30 P.M. at Highland High School, 2166 S 1700 E, except 12/24 & 31)

PROSPECTIVE MEMBERS are welcome on ALL club activities, with these exceptions:

- 1) Thursday Evening Hikes are for members only. However, prospective members may attend if the hike is their second qualifying activity for membership and they submit their dues check and application form to the leader before the hike.
- 2) Boating trips are for members. However, prospective members may attend a weekend trip if they use the trip as their qualifying activity (each day counts as one activity.)
- 3) A trip leader may choose to limit a trip to members, especially if there is limited space.

WMC SKI TOUR RATINGS EXPLAINED:

NTD (Not too difficult): Terrain is mostly gentle. Participants should be able to do a kick turn, snowplow, and descend a slope by traversing. Usually no avalanche danger.

MOD (Moderately difficult): Proficiency climbing and descending intermediate slopes is required. Pieps and shovels may sometimes be suggested or required. If a pieps is carried, this implies knowledge of how to search for a buried companion.

MSD (Most difficult): Strenuous. Usually involves long ascents, steep or narrow descents. Pieps and shovel always required.

CLUB ACTIVITIES

Only activities approved by the appropriate WMC Director can be listed in the Club Activities section of the *Rambler*. Send your proposed activity, for approval, to the hiking, rafting, skiing, etc., director for inclusion in their activity schedule. Those activities sent directly to the *Rambler*, without approval, will not be published.

Sat. Dec. 1

NORWAY FLATS UINTAS SKI TOUR. (NTD) Ken Kraus (363-4186) will take a group of skiers to one of his favorite trails in the Uinta foothills, 11 miles east of Kamas. Meet at the Regency Theatre parking lot on Parleys Way at 8:30 A.M.

LEADER'S CHOICE SKI TOUR. (MOD) Looking for some exciting skiing? Ski with Milt. Pieps and shovels required and skins preferable. Register with Milt Hollander (277-1416).

LEADER'S CHOICE SKI TOUR. (MSD) Call Peter Braam at 583-3105 to register.

WALLSBURG BIKE RIDE (NTD). This is a 28 mile ride from Heber to Wallburg. We'll tour the town of Charleston, meander around Deer Creek Reservoir, and ride to the heart of Round Valley. The terrain is easy flat to rolling. We'll stop for lunch at the Round Valley Inn. Meet Elliot (968-7357) at the K-Mart Regency to carpool at 9:00 AM, or in Heber at Wasatch High School (600 South 100 East), at 10:00. Helmets required.

Sun. Dec. 2

CATHERINES PASS SKI TOUR. (NTD) Ski with Anna to popular Catherines Pass. There should be snow by now so no hiking please. Pieps and shovels are smart but not required. Meet Anna Cordes (467-9430) at the Hillside Plaza Shopping Center (7000 S. 2300 E.) at 9:00 A.M.

SCOTTS PASS SKI TOUR. (MOD) Join Ray Duda (268-0182) on this MOD tour to enjoyable Scotts Pass. Pieps and shovels are always a good idea but not required on this tour. Meet Ray at the Hillside Plaza Shopping Center (7000 S. 2300 E.) at 9:00 A.M.

LEADERS CHOICE SKI TOUR. (MSD) Call George Westbrook at 942-6071 to register.

EASY SNOWSHOE TOUR/HIKE. (NTD) Call Doug Stark at 277-8538 for information on trip location and showshoeing. Meeting place is at the Hillside Plaza Shopping Center (7000 S. 2300 E.) at 9:30 A.M. Enjoy this winter in the mountains on snowshoes. No special skills required. For snowshoe rental locations call Doug Stark at 277-8538.

Mon. Dec. 3

VOLLEYBALL. 6:30 P.M. at Highland High School (2166 South 1700 East). Follow the signs near the gymnasiums. The cost is \$1.00. For information call Doug at 269-1833.

Fri. Dec. 7

VOLLEYBALL. 6:30 P.M. at Highland High School (2166 South 1700 East). Follow the signs near the gymnasiums. The cost is \$1.00. For information call Doug at 269-1833.

Sat. Dec. 8

GRIZZLY GULCH SKI TOUR. (NTD) Try to keep up with Monty on this modest tour with excellent views of Mt. Superior and Twin Lakes. Pieps and shovels not required but safety conscious skiers always take them along. Meet Monty Young (255-8392) at the Hillside Plaza Shopping Center (7000 S. 2300 E.) at 10:30 A.M.

DESOLATION LAKE SKI TOUR. (MOD) Gary Berg will take the long easy route to Desolation Lake via Mill D. This is a safe route but pieps and shovels make it safer. Meet Gary (485-6778) at the Hillside Plaza Shopping Center (7000 S. 2300 E.) at 9:00 A.M.

LEADER'S CHOICE SKI TOUR. (MSD) Call Rolf Doebling 467-6636 to register.

Sun. Dec. 9

SCOTTS PASS SKI TOUR. (NTD) Try Scotts Pass with Brett & Lynette Brooks (266-1708). The snow should be getting deep and Scotts may be a good bet on some powder. Pieps and shovels not required, but... Meet Brett & Lynette at the Harmons Park and Ride at 900 East and 7200 South to catch the bus up the canyon at 9:00 A.M.

GREENS BASIN SKI TOUR. (MOD) Greens Basin will be white by this time. Join Chris Biltoft (359-5645) at 9:00 A.M. at the Hillside Plaza Shopping Center (7000 S. 2300 E.) Don't forget your pieps and shovel.

LEADER'S CHOICE SKI TOUR. (MSD) Call Dave Smith at 278-6515 to register.

SCOTTS PASS SNOWSHOE TOUR. (NTD) Norm Pobanz (266-3703) will lead this nice snowshoe trip through the aspens and conifers to the scenic Scotts Pass. Meet Norm at 9:00 A.M. at the Hillside Plaza Shopping Center (7000 S. 2300 E.)

Mon. Dec. 10

VOLLEYBALL. 6:30 P.M. at Highland High School (2166 South 1700 East). Follow the signs near the gymnasiums. The cost is \$1.00. For information call Doug at 269-1833.

Sat. Dec. 15

LEADER'S CHOICE SKI TOUR. (MSD) Call George Westbrook at 942-6071 to register.

TWIN LAKES PASS AND ABOVE SKI TOUR. (MOD) Join Ken Kelley (1- 649-3520) on the ridge overlooking Big and Little Cottonwood Canyons. Pieps and shovels required, and skins preferable. Meet at the Hillside Plaza Shopping Center (7000 S. 2300 E.) at 9:00 A.M.

POWDER PARK #1 SKI TOUR. (MOD+) Bob Wilson (277-7446) will take you at a brisk pace to Powder Park, a great place to practice those telemark turns. Meet Bob at the Hillside Plaza Shopping Center (7000 S. 2300 E.) at 9:00 A.M. Pieps and shovels required and skins preferable.

CATHERINES PASS VIA BRIGHTON SKI TOUR. (NTD) Join Mike Treshow (467-8814) at a modest pace into the snowfields of Catherine. Pieps and shovels suggested and skins preferable. Meet at the Hillside Plaza Shopping Center (7000 S. 2300 E.) at 9:00 A.M.

LOWER SILVER FORK SNOWSHOE TOUR. (NTD) Try an easy snowshoe walk in the forest to the first mine. Janet Friend (268-4102) will meet you at the Hillside Plaza Shopping Center (7000 S. 2300 E.) at 9:30 A.M.

Dec. 15-16

Sat.-Sun.

OGDEN VALLEY WEEKEND SKIING. Cindy Cromer invites you to share her condo at Wolf Creek Village in Ogden Valley. Join Cindy for a potluck dinner on Saturday, stay overnight, and ski all day Sunday. All levels of skiing are available: from skiing on the golf course around the condo to taking the runs at nearby Powder Mountain. If you do not want to stay overnight, drive up Sunday. Cindy plans to lead an NTD tour in the area at about 9:30 Sunday morning, possibly to Snowbasin for a look at the Olympics land trades. Call Cindy for details at 355-4115.

Sun. Dec. 16

LEADER'S CHOICE SKI TOUR. (MSD) Call Milt Hollander at 277-1416 to register.

WILLOW LAKE SKI TOUR. (NTD) Willow Lake is short but a little steep ski tour to a now frozen lake. Skins are preferable if your skis go backward better than forward. Meet Doug Kluender (584-6303) at the Hillside Plaza Shopping Center (7000 S. 2300 E.) at 9:00 A.M.

TEACH AND TOUR SKI TOUR. (NTD-) The touring committee will have several basic classes throughout the season to help new skiers with basic skills. This will be a tour on a gentle grade and will require the ability to walk on the skis. Join Norm Fish (964-6155) and Dauphne Randell (485-1483) at the Hillside Plaza Shopping Center (7000 S. 2300 E.) at 10:30 A.M.

GRIZZLY GULCH SKI TOUR. (MOD) Always a fairly easy MOD tour in the open meadows below Twin Lakes Pass. The pace will be slow due to photographers and models at work. Join Rick McClain (487-2112) at the Hillside Plaza Shopping Center (7000 S. 2300 E.) at 9:00 A.M. Pieps and shovels suggested and skins preferable.

BRIGHTON TO SILVER FORK SKI TOUR. (MOD+) Join Larry Stewart (277-2894) on this tour over Twin Lakes Pass, around the backside of Honeycomb, and down Silver Fork. Meet at the Hillside Plaza Shopping Center (7000 S. 2300 E.) at 9:00 A.M. Pieps and shovels required and skins preferable.

Mon. Dec. 17

VOLLEYBALL. 6:30 P.M. at Highland High School (2166 South 1700 East). Follow the signs near the gymnasiums. The cost is \$1.00. For information call Doug at 269-1833.

Sat. Dec. 22

DOG LAKE VIA MILL D SKI TOUR (NTD) Join Floyd Durrant (596-1931) on this popular and fairly easy tour to Dog Lake. Meet at the Hillside Plaza Shopping Center (7000 S. 2300 E.) at 9:00 A.M.

BOX ELDER SKI TOUR. (MSD) Meeting time will be early. Call George Westbrook for time and place. 942-6071.

LEADER'S CHOICE SNOWSHOE TOUR. (NTD) Call Joy Ray (277-0562) for the location of this easy trip, and the meeting place and time. For new snowshoers on this Big Cottonwood Canyon trip, Joy recommends Sherpa snowshoes/bindings and ski poles.

Sun. Dec. 23

DAYS FORK SKI TOUR. (NTD) After a new show, Days Fork is one of the most picturesque of in-the-trees tours. Meet Kyle Williams (487-9309) at the Hillside Plaza Shopping Center (7000 S. 2300 E.) at 9:00 A.M. for this trip up the old mining road of Days Fork. Pieps and shovels prudent and skins required.

ALTA-DAYS FORK SKI TOUR. (MSD) Meet at the mouth of Little Cottonwood Canyon at 9:00 A.M. George Westbrook 942-6071.

Mon. Dec. 24

POWDER PARK SKI TOUR. (MOD) Deep powder at Powder Park. Jim knows the best places. Join Jim Piani (272-3921) at 9:00 A.M. at the Hillside Plaza Shopping Center (7000 S. 2300 E.) Pieps and shovels required and skins a good idea.

SCOTTS PASS TO JUPITER RIDGE SKI TOUR. (MOD) Join Ken Kelley (1-649-3520) on this favorite tour with the added kick of untracked snow on the back side of Jupiter Peak. Meet at the Hillside Plaza Shopping Center (7000 S. 2300 E.) at 9:00 A.M. Pieps and shovels required and skins preferable.

NO VOLLEYBALL TONIGHT. Next volleyball session is Jan 7. For information call Doug at 269 1833.

Dec. 24-25

Mon.-Tue.

CELEBRATE CHRISTMAS AT THE WMC LODGE. Hosted by Barbara Jacobsen (943-3715) and Leslie Woods (484-2338). The lodge will be open from 4:00 P.M. December 24 until 7:00 P.M. December 25. Activities:

* **CHRISTMAS EVE PARTY AT THE LODGE.** Join the fun and come party with us on Christmas Eve for a "Trim the Tree" party, friendship, Christmas caroling, and laughter. Bring an ornament for the tree and a \$5 gift to exchange (suitable for male or female.) We will be staying overnight so if you wish to do the same, you will be charged a \$3 lodge fee. Also, we need someone to donate a **CHRISTMAS TREE** with stand and get it up to the Lodge by Christmas Eve! Let us know!

* **CHRISTMAS DAY AT THE LODGE.** Downhill skiing, cross country skiing, and showshoeing are some of the unplanned activities for the day. OR, just sit by the fire, warm your toes, drink coffee, and roast chestnuts all day.

* **POTLUCK CHRISTMAS DINNER AT THE LODGE.** Dinner with all the trimmings will be served at 4:00 P.M. Turkey and ham provided by the WMC and cooked by your gracious hostesses. RSVP for a potluck breakfast (only for those who plan to sleep over) and also the potluck dinner no later than December 14th. Call Barbara (943-3715) or Leslie (484-2338) for details and reservations.

Tue. Dec. 25

CATHERINES PASS SKI TOUR. (MOD) Leslie Woods (484-2338) will take an easy pace to the snow fields below Catherines Pass. Meet Leslie at the Wasatch Mt. Club Lodge at 10:00 A.M. Pieps, shovels, and skins required.

Sat. Dec. 29

SNOWBASIN SKI TOUR. (NTD) Enjoy this scenic area with easy terrain and a truly white Christmas atmosphere (weather permitting); to be followed by a soiree at the Shooting Star Saloon in beautiful downtown Huntsville, supposedly the oldest, continuously running liquor establishment in the state of Utah. Call Chuck Reichmuth at 483-1542 for 8:00 A.M. rendezvous information. We need at least 10 people to make this a worthwhile trip to Ogden's upper valley.

SILVER FORK SKI TOUR. (NTD) Join Kyle Williams (486-9309) on this tour to the mine and possibly beyond to several open slopes to practice those telemark turns. Meet at the Hillside Plaza Shopping Center (7000 S. 2300 E.) at 9:00 A.M.

MINERAL FORK SKI TOUR. (MOD) Richard Conn (363-6035) will lead this tour to the open slopes and good powder of Mineral Fork Basin. Join Richard at the Hillside Plaza Shopping Center (7000 S. 2300 E.) at 9:00 A.M. Pieps and shovels required and skins preferable.

Sat. Dec. 29

LEADER'S CHOICE SNOWSHOE TOUR. (MOD-MSD) Call Norm Pobanz (266-3703) for information on this more difficult snowshoe trip. Meet Norm at 9:00 A.M. at the Hillside Plaza Shopping Center (7000 S. 2300 E.)

Sun. Dec. 30

CARDIFF BASIN FROM BIG COTTONWOOD SKI TOUR. (NTD) Beat the snowmobiles into this large basin below Mt. Superior. The motorized public should be left far below as you move into the area above Doughnut Falls. Join N. Dauphne Randell (485-1483) at the Hillside Plaza Shopping Center (7000 S. 2300 E.) at 1:00 P.M. Skins would be helpful but not required.

NEFFS PASS SKI TOUR. (MOD) For skiers that have a controlled stop. Bring goodies. This will be an easy pace tour. Meet David Minix (967-3864) at the Hillside Plaza Shopping Center (7000 S. 2300 E.) at 9:00 A.M.

PFIEFFERHORN SKI TOUR. (MSD) Call Dave Smith (278-6515 or 486-2100) to register.

Mon. Dec. 31

NO VOLLEYBALL. Next volleyball session is Jan. 7. For information call Doug at 269-1833.

Dec. 31-Jan. 1

Mon.-Tue.

CELEBRATE NEW YEARS AT THE LODGE. Hostesses will be Barbara Jacobsen (943-3715) and Leslie Woods (484-2338). The lodge will be open from 6:00 P.M. December 31 until 4:00 P.M. January 1. Activities planned:

NEW YEARS EVE DINNER AND DANCING AT THE LODGE. Potluck dinner starting at 7:30 P.M. with dancing to a "Boom Box" SO BRING YOUR FAVORITE TAPES. We could not get Rob Snow. Barb and Leslie will be staying overnight again. Why not you too in case you've had a little too much liquid refreshment! Also, bring your favorite card games.

NEW YEAR'S DAY: Downhill skiing, cross country skiing, snowshoeing, and Wick Miller's "CRACK OF NOON" ski tour are a few of the possibilities for fun.

Tue. Jan. 1

HANGOVER SKI TOUR TO LAKE MARY. (NTD) Wick Miller (649-1790) has once again consented to lead the tour. It leaves at the crack of noon at the Hillside Plaza Shopping Center (7000 S. 2300 E.). This will be at a relaxed pace but not for the rank beginners.

Sat. Jan. 5

UINTAS SOAPSTONE BASIN SKI TOUR. (NTD) Join Dennis Tolboe (485-6023) at the Regency Theatre parking lot on Parleys Way at 8:30 A.M.

WILLOW LAKE AND BEYOND SKI TOUR. (MOD+) An easy tour to the lake but then only Bob Wilson (277-7446) knows where he will go next. This will be a fast paced tour. Pieps and shovels required and skins preferable. Meet at the Hillside Plaza Shopping Center (7000 S. 2300 E.) at 9:00 A.M.

POWDER PARK SKI TOUR. (MOD) Join Martin Gregory (582-2403) for some great snow at one of the best places to practice telemark turns. Meet at the Hillside Plaza Shopping Center (7000 S. 2300 E.) at 9:00 A.M. Pieps and shovels required and skins preferable.

CARDIFF FROM ALTA SKI TOUR. (MSD) Leaders choice if powder better somewhere else. Call Alan Gavere (486-1476) to register and to give assistance with the car shuttle. Pieps and shovels required and skins preferable. Meet at the mouth of Big Cottonwood Canyon at 8:15 A.M.

Sun. Jan. 6

AUDREY KELLEY MEMORIAL SKI CLINIC (NTD-) Audrey gave of her time and skill every year since Jan 3, 1986 to help beginning skiers learn the art of cross country skiing. The tradition continues. The following was taken from the first writeup in 1986: "Any member of the Club (or will-be members) who wants to learn to ski should be at the Regency Theater Parking Lot on Parleys Way at 9:00 A.M. Someone will be at the meeting place to direct the group to Audrey and Don's beautiful home at Timberline near Park City. This will be a wonderfully supportive "home-hearth-hot toddy" ski beginning. Fond memories of a magic day are a certainty" All skiers and to-be skiers are invited. Park on the south side of the road and hike into Timberline from here. Call Norm Fish (964-6155) if needed. (Instructors and help with the food are needed. Contact Norm Fish 964-6155).

DESOLATION LAKE VIA MILL D SKI TOUR. (NTD+) Desolation Lake is at the end of a long, easy, and gradual climb through several meadows along a well used trail. Join Val Naef (255-7562) at the Hillside Plaza Shopping Center (7000 S. 2300 E.) at 9:00 A.M. Pieps and shovels advisable but not required and skins preferable.

REYNOLDS PEAK FROM MILL D SKI TOUR. (MOD) Join David Morris and Teresa Overfield (359-6274) at the Hillside Plaza Shopping Center (7000 S. 2300 E.) at 9:00 A.M. Pieps and shovels required and skins preferable.

THUNDER MOUNTAIN - BELL CANYON SKI TOUR. (MSD) Meeting time will be early so call George Westbrook at 942-6071 for place and time. There is a car shuttle involved.

LEADER'S CHOICE SNOWSHOE TOUR. (NTD) Leader Leah Mancini (582- 7912) plans an enjoyable day out in the snow of a nearby canyon. Leah will meet snowshoers at the Olympus Hills Mall near the old Bagel Nosh at 9:00 A.M.

Mon. Jan. 7

VOLLEYBALL. 6:30 P.M. at Highland High School (2166 South 1700 East). Follow the signs near the gymnasiums. The cost is \$1.00. For information call Doug at 269-1833.

Sat. Jan. 12

SKI DAY AND TELEMARCK PRACTICE AT THE LODGE. Lodge open at 9:00 A.M., telemark lessons at 9:30 A.M. Purchase lift tickets in advance. Demo skis will be available. Pieps refresher at about 4:00 P.M. Bring your own Pieps. Walt Haas (534-1262).

CATHERINES PASS FROM ALBION BASIN SKI TOUR. (NTD) This will be a slow leisurely pace up a very popular summer hiking trail where under feet of snow the flowers of Albion Basin still bloom. And if you believe that one, join John Shavers (359-3838) at the Hillside Plaza Shopping Center (7000 S. 2300 E.) at 9:00 A.M. Picking wild flowers is allowed on this tour.

WOLVERINE AND BACK TO THE LODGE SKI TOUR. (MOD+) Normally a MOD, but Peter Hansen (583-8249) makes it a +. Anyone that can run between Twin Peaks in 2 minutes has to be a +. Join Peter at the Hillside Plaza Shopping Center (7000 S. 2300 E.) at 9:00 A.M. Pieps and shovels required and skins preferable.

GUARDSMAN TO CLAYTON PEAK DOWN HIDDEN VALLEY SKI TOUR. (MOD) Join Arthur Griffin (363-1996) on this seldom skied route (maybe we will discover a new way to do this tour). Meet at the Hillside Plaza Shopping Center (7000 S. 2300 E.) at 9:00 A.M. Pieps and shovels required and skins preferable.

Sat. Jan. 12

MSD SKI TOUR. Leader needed.

NOMINATIONS BANQUET. 6:00 P.M. at The Stuft Noodle, 4700 South & 900 East in Ivy Place. See full page ad elsewhere for details. Reservations must be made by January 4, 1991.

Sun. Jan. 13

TOLL CANYON SKI TOUR. (NTD) An Audrey Kelley favorite. Celebrate this annual event after the Audrey Kelley Memorial Ski Class with J. Dewell (295-2754). Meet at the Regency Theatre parking lot on Parleys Way at 9:00 A.M.

WHITE PINE IN PARK CITY SKI TOUR. (NTD) Ski a pretty bowl and maybe see the helicopter from Park West take off. Join Leslie Mullins (363-0560) at 9:00 A.M. at the Regency Theatre parking lot on Parleys Way.

TEACH AND TOUR SKI TOUR. (NTD-) The touring committee will have several basic classes throughout the season to help new skiers with basic skills. This will be a tour on a gentle grade and will require the ability to walk on the skis. Join Norm Fish (964-6155) and Dauphne Randell (485-1483) at the Hillside Plaza Shopping Center (7000 S. 2300 E.) at 10:30 A.M.

BIG ELK LAKE IN THE UINTAS TURTLE SKI TOUR. (MOD) This tour will be at a slow pace led by Charles Leslie (364-2486). We will try to make it to Big Elk Lake if there are enough people to break trail. Meet at the Regency Theatre parking lot on Parleys Way at 5:00 A.M. (that is Midnight + 5 hours).

RED PINE SKI TOUR. (MOD+) Ski along this popular summer trail with Hank Winawer (277-1997). Join Hank at the Hillside Plaza Shopping Center (7000 S. 2300 E.) at 9:00 A.M. Pieps and shovels required and skins preferable.

LAKE BLANCHE SKI TOUR. (MSD) Dennis and Karin Caldwell will lead this classic tour. The meeting place will be at Dennis and Karin's house, so call for meeting time. 942-6065.

Sat. Jan. 19

AVALANCHE CLINIC. See January Rambler for details. Time will be 8:00 A.M. to about 3:00 P.M. Morning session inside and the afternoon Pieps practice at the Spruces. The inside location to be announced.

MILLCREEK ROAD (BROWN SNOW SPECIAL) SKI TOUR. (NTD) No-wax touring skis are recommended for this tour. No K-9s please. Join Louise Rausch (328-1290) at the Hillside Plaza Shopping Center (7000 S. 2300 E.) at 9:00 A.M.

UPPER GREENS BASIN SKI TOUR. (MOD) Help with Pieps practice at the afternoon session of the avalanche class and get a ride down after the session ends. Piep with Allan & Ilka Olsen (272-6305). Meet at the Hillside Plaza Shopping Center (7000 S. 2300 E.) at 9:00 A.M. Pieps and shovels required and skins preferable.

POWDER PARK #2 SKI TOUR. (MOD) Practice Pieping along with a few telemarks with George Swanson (466-3003). Walt needs Pieping instructors, (Ortovox instructors needed also) for the afternoon session. Meet at the Hillside Plaza Shopping Center (7000 S. 2300 E.) at 9:00 A.M. Pieps and shovels required and skins preferable.

THE BOUNTIFUL PEAK AREA SKI TOUR (MOD) Drive up Farmington Canyon, so 4 wheel drive or front wheel drive vehicles required. Car pooling preferred. Piep and shovels NOT required. Join Kenny Strong (546-1344) at the Farmington Courthouse in the center of town at 9:00 A.M.

Sun. Jan. 20

GREENS BASIN SKI TOUR. (NTD) Take a leisurely pace up through the pines with Christine Allred (261-8183). Meet at the Hillside Plaza Shopping Center (7000 S. 2300 E.) at 9:00 A.M.

QUARRY MOUNTAIN IN PARK CITY SKI TOUR. (NTD) Join Bob Wright (649-1228) on this easy tour. Bob also invites all those that need to relax to join him in the hot tub afterward. Meet at his house 3886 Hoiiday Curve, Park City, at 1:00 P.M.

LEADER'S CHOICE SKI TOUR. (MOD) Join Marv Hamilton (363-2083) to some unknown location. Meet at the Hillside Plaza Shopping Center (7000 S. 2300 E.) at 9:00 A.M. Pieps and shovels required and skins preferable.

WHITE BALDY SKI TOUR. (MSD) Call Dave Smith (278-6515 or 486-2100) to register.

January

MOONLIGHT SKI TOURS WITH DAUPHNE. Watch for a repeat of last year's fun in the dark, toward the end of January.

SKATE SKIING CLASSES. Contact Cindy Cromer (355-4115) to help her decide when the first class should be.

TELEMARK CLINIC Leaders needed for a January class. Call Norm Fish at 964-6155.

Feb. 1-3

Fri.-Sun.

CROSS COUNTRY SKI TOUR WEEKEND. A repeat of last year's highly successful tour at Cedar Breaks National Monument and the Dixie National Forest. Join Ken Kraus (363-4186) on this fun trip.

Feb. 15-18

Fri.-Mon.

CROSS COUNTRY SKI AND SNOWSHOE WEEKEND at the north rim of the Grand Canyon. Organized trip with snow transportation and staying in a yurt or lodge. Meals available. Reasonable rates. Contact Christal Sysak (943- 0316). Register early.

GREEK & CARIBBEAN SAILING TRIPS PLANNED

by Vince Desimone
Sailing Coordinator

Demand to repeat the highly successful 1990 Virgin Islands Caribbean sailing trip has been great. Now is the time to commit to next year's trip to assure your place in our fun in the sun. Sail boats have been reserved for July 1 thru 11, 1991.

Optional will be a two day pack trip in to the El Yunque Caribbean National Forest. This is a unique tropical rain forest in Puerto Rico.

A full color narrated video tape on the 1990 Virgin Islands trip was presented at the October 17 WMC annual meeting and is available for loan.

Cost for the 1991 trip is anticipated to be about \$600 plus transportation. The total cost of the 1990 trip was less than \$1200 including air fare. A \$25 nonrefundable deposit is required to hold your place on sailing trips so send your deposit now and avoid being one of the disappointed.

Greece is our destination for two weeks at the end of September and beginning of October 1991. We will spend 10 days sailing between the Greek Islands and the rest of the time touring Athens and other points of interest. The cost, including airfare at current rates, will be \$2200 plus food.

Contact Vince Desimone at P.O. Box 680111 Park City, Utah 84068, or phone 1-649-6805 concerning these trips.

FROM THE SCUBA DIVING COORDINATOR

by Bob Sherer

Let's start off 91 with a dive trip to Cozumel. We will leave February 23 for 7 nights with 5 days of diving, 2 tank a.m. dive with lunch, unlimited beach diving, all taxes and services lodging at the Casa Del Mar, and air fare for \$895. Food can run \$5-20/meal. A \$150 deposit is due ASAP and the remaining due in 45 days.

I apologize that this may not be enough notice for you to plan ahead. If you miss this date, don't forget the Virgin Islands in June and of course Greece next fall. Hey! Wow! This club is going places! But it always has. Should the WMC start its own travel agency? Now divers are welcome to come along on the Cozumel trip. If you don't dive, but would like to, we can do the classroom and pool work up here and then do the certification dives down there.

OUT-OF-TOWN ACTIVITIES

CHRISTMAS IN YELLOWSTONE

by Janis Huber

Do beautiful winter scenes appeal to you? Are you not quite sure what you are doing for Christmas?? Well join me in Montana for what will be a great Christmas week for ski touring in Yellowstone. The room reservations are at the Absoroka Lodge in Gardiner, Montana. Ski tours will concentrate in Northern Yellowstone. The dates have slightly changed: Leave afternoon of December 21 and head for home on December 29. We plan on cross-country skiing in Yellowstone but there are other activities (ice skating, snowshoeing, and park sponsored activities) for the group to decide on. Also, we are planning a nice group Christmas dinner in Gardiner.

By the time this notice appears in December's Rambler, all the rooms may be booked up, but call me anyway if you are interested.

PREPARING FOR A TRIP TO THE LODGE

FOR YOUR INFORMATION

by Barbara Jacobsen

Probably a lot of you are wondering how to prepare for an outing at the Lodge. Since we are encouraging people to spend the night on Christmas Eve and New Year's Eve, here is a list of things to bring:

1. Sleeping bag and pillow.
2. Food, drinking water, any kind of liquid drinks. (instant coffee, tea, hot chocolate, pop).
3. All utensils, (knives, forks, spoons, plates, cups, etc.), pots, pans (if you plan to cook).
4. Plan for your own meals unless otherwise specified as potluck.
5. All personal items, plenty of warm clothes, appropriate foot wear.

The road to the Lodge is closed in the winter. REMEMBER--the only way to obtain access is on skis, snowshoes, or by walking. You will need to pull a sled or whatever for hauling belongings up to the Lodge.

NEW MEMBERS - 11-7-90

Kenneth Evans
Jean Reinicke
Annette Tanner
Julie Tanner
William Thompson

CELEBRATE CHRISTMAS AND NEW YEARS AT THE BEAUTIFUL AND RUSTIC W.M.C. LODGE

HOSTED BY
BARBARA JACOBSEN AND LESLIE WOODS

DECEMBER 24 & 25: Join the fun and come party with us on Christmas Eve for a "Trim the Tree" party, friendship, Christmas caroling, and laughter. Bring an ornament for the tree and a \$5 gift to exchange (suitable for male or female.) We will be staying overnight so if you wish to do the same, you will be charged a \$3 lodge fee.

CHRISTMAS DAY: Downhill skiing, cross country skiing, and snowshoeing are some of the unplanned activities for the day. OR, just sit by the fire, warm your toes, drink coffee, and roast chestnuts all day.

POTLUCK CHRISTMAS DINNER with all the trimmings will be served at 4:00 P.M. Turkey and ham provided by the WMC and cooked by your gracious hostesses. RSVP for a potluck breakfast (only for those who plan to sleep over) and also the potluck dinner no later than December 14th. Call Barbara (943-3715) or Leslie (484-2338) for details and reservations.

We need someone to donate a CHRISTMAS TREE with stand and get it up to the lodge by Christmas Eve. Let us know if you can help!

Lodge hours will be: 4:00 PM. December 24 until 7:00 PM. December 25, 6:00 PM. December 31 until 4:00 PM January 1.

NEW YEARS EVE: Potluck dinner starting at 7:30 P.M. with dancing to a "Boom Box" or Rob Snow, "time Lord of Rock & Roll". (FINAL PLANS WILL BE IN THE DECEMBER ISSUE OF THE RAMBLER) 8:30 P.M. until ??? Barb and Leslie will be staying overnight again. Why not you too in case you've had a little too much liquid refreshment! Also, bring your favorite card games.

NEW YEARS DAY: Downhill skiing, cross country skiing, snowshoeing, and Wick Miller's "CRACK OF NOON" ski tour are a few of the possibilities for fun.

"REMEMBER TO BRING YOUR OWN LIQUID
REFRESHMENTS"

NOMINATIONS BANQUET

**SATURDAY, JANUARY 12,
1991**

at

**THE STUFF NOODLE
4700 SOUTH 900 EAST
(IVY PLACE)**

**DINNER CHOICES:
Paprika Chicken, \$13.25
Halibut Steak, \$14.48**

**Dinners include: salad, bread, dessert,
beverage, and setups.**

BYOB

**Social hour 6:00 P.M.
Nominations 7:00 P.M.
Dinner 8:00 P.M.**

**RESERVATIONS MUST BE MADE BY
JANUARY 4, 1991**

Send check, payable to Wasatch Mountain Club, indicating your choice of entrance, to:

**Marc Hutchison
244 West 600 North, #129
Salt Lake City, UT 84103**

We can accommodate special needs.

Call Marc at 355-3227

CANDIDATES FOR 1991-1992 GOVERNING BOARD

The Nomination Committee is pleased to present our candidates for the Governing Board:

President	Wick Miller
Secretary	Leslie Giddings
Treasurer	Cynthia Anderson *
Membership	Julie Ann Jones *
Boating	Randy Klein
Conservation	John Veranth
Hiking	(open)
Lodge	Vince Desimone *
	Kathy Klein (rentals) *
Mountaineering	(open)
Publications	(open)
Ski Touring	Norm Fish *
Information	Barbara Jacobsen *
	Aaron Jones *
Trustee	Alexis Kelner*
Entertainment	(open)

* Incumbent

BACKCOUNTRY/CROSS COUNTRY SKI SWAP TO BENEFIT THE UTAH AVALANCHE FORECAST CENTER

The Friends of the Utah Avalanche Forecast Center is having a backcountry/cross country ski swap December 8th at REI, 1122 Brickyard Road. Proceeds will go to the Utah Avalanche Forecast Center.

The swap will specialize in all types of backcountry and cross country equipment. We will also have door prizes, videos, and refreshments.

The Utah Avalanche Forecast Center issues twice daily backcountry avalanche advisories, mountain weather forecasts, and provides avalanche education to the public. Because of continuing federal budget cuts, the Utah Avalanche Forecast Center needs your financial support to continue its quality service to Utah's winter recreation community.

For more information or if you would be interested in volunteering at the swap, please call Bruce Treppe at 524-5304.

3-DAY AVALANCHE WORKSHOP

Presented by the
Wasatch Mountain Club

Special Backcountry Avalanche Hazard Evaluation Workshop. Oriented towards experienced mountaineers and backcountry skiers who like to ski "the steep and the deep," this comprehensive workshop will focus on answering these bottom line questions: Is the slope safe?; What data are you basing your hazard evaluation decisions upon?; and, Do better alternatives exist? Training will cover the latest snow stability evaluation techniques, terrain analysis, the mechanics of slab failure, snow metamorphism, route selection, avalanche hazard evaluation/decision making, and backcountry rescue.

Training will be intensive with 33-hours of training packed into three days. Emphasis will be on the practical application of key concepts relating to avalanche hazard evaluation and on learning by doing in the field.

* 8 a.m., Saturday, January 25 through 6 p.m. Monday, January 27, 1991

* **To register, contact: John Kortbawi, evenings, at 485-7916.**

* Held at the Wasatch Mountain Club Lodge, Brighton, Utah, with field training in the surrounding mountains.

Course Materials will be sent to each participant upon registration. **Pre-registration is required and spaces are limited.**

Participants must be in good physical condition, able to ski or snowshoe uphill and down in variable terrain and snow conditions, and be prepared to remain in foul weather all day. Pieps, skins, shovels, and avalanche probes are required.

Cost including lodge fee and course materials is **\$125.00**. Make check payable to Wasatch Mountain Club. Special 10% discount to Wasatch Mountain Club members.

SKY CALENDAR

by Ben Everitt

MOON

Full Moon	Dec 2	Dec 31
Last Quarter	Dec 9	Jan 7
New Moon	Dec 16	Jan 15
First Quarter	Dec 24	Jan 23

MOONRISE

Saturday	Est. Local Time
Dec 1	4:00 P.M.
Dec 8	12:30 A.M.
Dec 15	6:30 A.M.
Dec 22	11:00 A.M.
Dec 29	2:30 P.M.
Jan 5	11:00 P.M.
Jan 12	5:15 A.M.

NOTE: Moonrise times are for 40 degrees north latitude, 112 west longitude. Add about an hour for each day later than the given date, and another hour if you are in the mountains.

SOURCE: The Astronomical Almanac for 1990.

MOON: Be sure to watch the full moon rise or set December 2nd or 3rd. You will see it as far north on the horizon as it ever gets, and farther north than the summer sun rises.

You may have heard of Iben Browning's forecast for extra high tidal stress and possible resulting earthquakes on December 2 or 3. This forecast is based on the rare coincidence of three aspects of the moon's orbit: full moon (1 A.M. Dec 2, Utah time), when moon and sun are on opposite sides of the earth; perigee (4 A.M. Dec 2, Utah time), when the moon is closest to the earth in its monthly go-round; and maximum declination (Dec 2 and 3), when the moon is about as far north (26 degrees) as it ever gets. The result will be a tidal pull of rare strength in the high northern latitudes, as well as a beautiful winter moon.

PLANETS: Orange Mars is again the star of the show, high in the east at evening in the constellation Taurus. Jupiter rises later in the evening, in the constellation Cancer.

WASATCH MOUNTAIN CLUB

MEMBERSHIP LIST

1990-1991 GOVERNING BOARD

President	John Veranth	278-5826
Secretary	Jim Elder	943-3321
Treasurer	Cynthia Anderson	359-8823
Membership	Julie Ann Jones	278-4753
Boating	Jeff Barrell	278-3510
Conservation	Janet Friend	268-4102
	Keith Johnson	268-2453
Entertainment	Marc Hutchison	355-3227
Hiking	Jerry Hatch	467-7186
	Gene Wooldridge	973-8073
Lodge	Vince Desimone	1-649-6805
	Kathy Klein (Rentals)	272-8059
Mountaineering	Tony Thompson	363-9891
Publications	Pat Beard	596-8099
Ski Touring	Norm Fish	964-6155
Information	Barbara Jacobsen	943-3715
	Aaron Jones	467-3532
COORDINATORS		
Bicycling	Rich Gregersen	467-6247
	Nance Randall	485-1483
Canoeing	Randy Klein	485-3360
Kayaking	Marlene Egger	277-2894
Sailing	Vince Desimone	1-649-6805
Rafting	Lidia DiLello	943-3321
	Jim Elder	943-3321
Volleyball	Doug Stewart	269-1833

TRUSTEES

Karin Caldwell	942-6065
Dale Green	277-6417
Milt Hollander	277-1416
Alexis Kelner	359-5387
O'Dell Peterson	Trustee Emeritus
Dale Green	Historian

DECEMBER 1990



3125 So. State 486-4161 Mon.-Thurs.9:30-8:00, Fri. to 9:00, Sat. to 6:00



702 THIRD AVE
533-8671

WASATCH TOURING
702 East 100 South • 359-9361



GREAT GEAR FOR WINTER FUN FROM WILD ROSE

SKATE SKIS: CUTTING EDGE PRODUCTS
FOR WINTER FUN AND FITNESS FROM BLIZZARD,
LANDSEM, ATOMIC, KNEISSL, SALOMON, ALFA
AND REFLEX. COMPLETE SELECTION OF RACE
WAXES AND TOOLS.

BACKCOUNTRY TOURING:
QUALITY METAL EDGE GEAR FROM ATOMIC,
ASNES, TUA, ASOLO, VOILE AND ROTTEFELLA.

CLOTHING: TECHNICAL OUTERWEAR
AND FUNCTIONAL ACCESSORIES FOR OUTDOOR
WINTER ACTIVITIES.

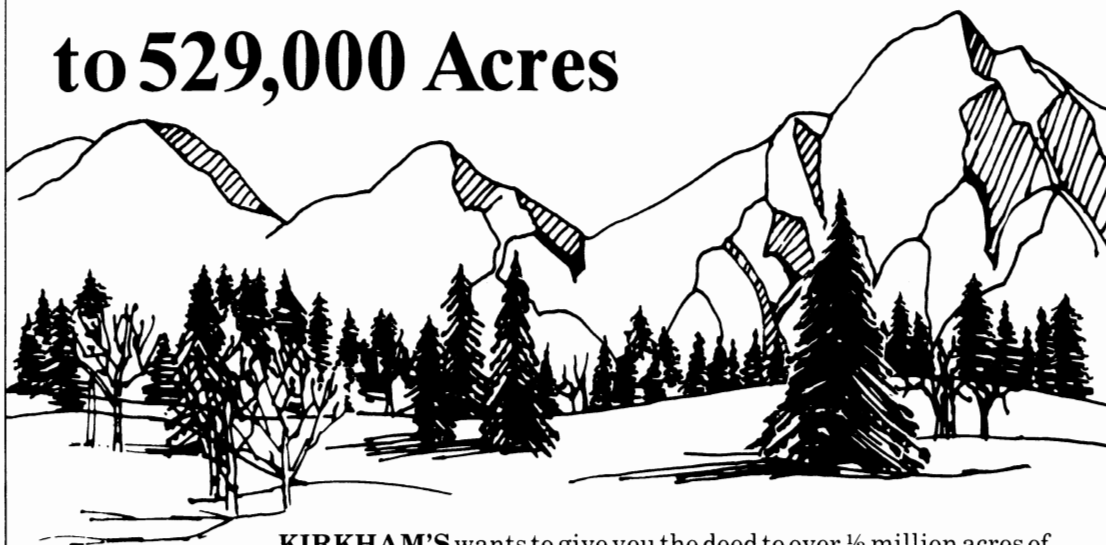
SERVICE: WE OFFER A FULL SERVICE
REPAIR FACILITY. MOUNTING, TUNEUP, DELAM
AND EDGE REPAIR, PLUS BASE PREPERATION
AND RACE WAX SERVICE.

DEMO & RENTAL: METAL EDGE,
SKATING AND LIGHT TOURING.

WILD ROSE
702 THIRD AVE
533-8671

We'll Give You the Deed...

to 529,000 Acres



KIRKHAM'S wants to give you the deed to over ½ million acres of winter wilderness by giving you the finest advice on cross country ski gear for Touring, Skating, or Telemarking. It's all within your reach.



TOURING lets a person of any age or ability get out of the house and into nature, exercise, family and friends. Kirkham's quality wood-core touring packages are well priced, yet durable. We'll help make skiing even easier with expert advice.



TELEMARKING lets you experience the winter outdoors in the best way possible by going virtually anywhere without restriction. You'll appreciate the glorious Wasatch backcountry with ease. Kirkham's people understand telemarking because they do it! Our quality selection ranges from very affordable to ultimate performance metal edged skis from TUA and Kazama.



SKATING is the best way for a beginner or avid cross trainer to stay in shape during the winter. It's fun, fast, and aerobic. Kirkham's staff has tested all the top skating skis and their knowledge can put you into the right ski the first time. Our selection of skating skis is the largest in Salt Lake. We offer the superior SDS and NNN binding systems with boots from Adidas and Alpina.



3125 South State 486-4161 Open Mon.-Thurs. 9:30-8:00 p.m., Fri. till 9:00, Sat. till 6:00

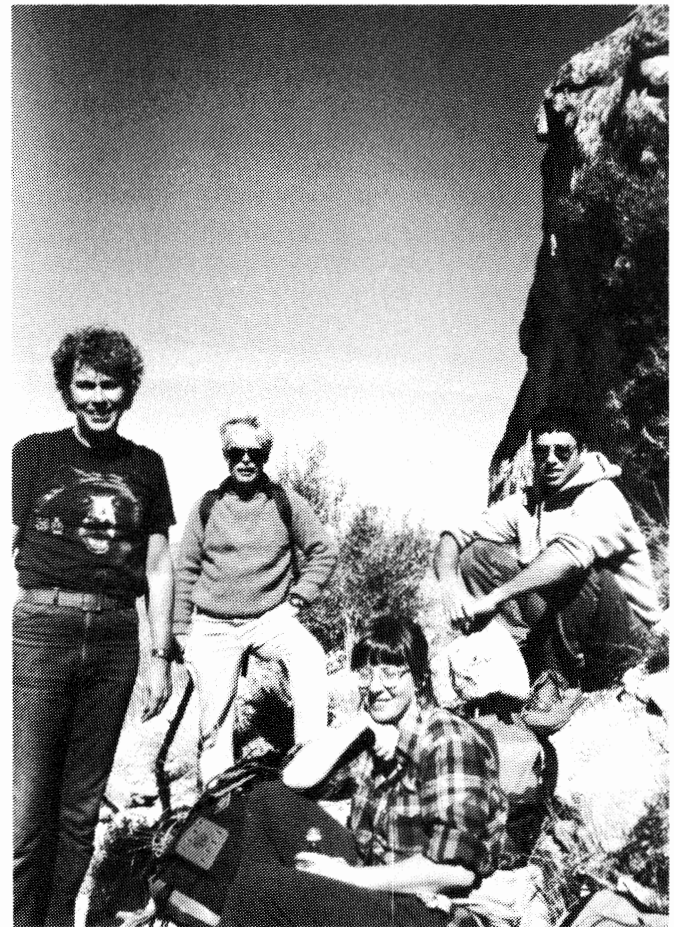
TRIP TALK

HOUNDSTOOTH HIKE

October 14, 1990
Photos and text by
Phyllis A. Papan

It was a cool, crisp October morning with lots of blue sky as five intrepid people set out on the hike. The weather report said it was going to be cold with possible snow, but we lucked out. It couldn't have been better.

We talked Jim, our leader, into going the way Rip and I knew (Hank's way - isn't that the only way?). It was a steep hike so we took it slow stopping quite a few times to catch our breath. We bushwhacked through scrub oak and maple trees colored with hues of orange, gold, red and brown. Rock scrambling was in order too on the long climb up. Jim said, "We should have gone my way, at least there is a trail all the way up". A trail?! We didn't know there was such a thing. So Hank's way isn't the only way. We went Winewar's way, but we should have gone Piani's way!!



We stopped to eat and rest before going on. As the birds flew above us, we enjoyed the view of the valley and munched on snacks. We went on again until we reached the base of Houndstooth. There we tried to solve the world's problems as we sat in the warm sun. It was a beautifully warm day. While resting we watched the hawks and eagles soar above us and glide on the wind currents as if they had no cares in the world.

Coming down was fun but time consuming. All in all it was a long hike mostly because we took our time and enjoyed the scenery and good company.

PARTICIPANTS: Our patient and understanding leader, Jim Piani, Ronit and Eyal Katz, Rip Johnson, and Phyllis Papan.

MOUNT WATSON HIKE

Sunday, August 12, 1990
by Chris Venizelos

On a clear Sunday morning, nine hiking enthusiasts headed up to Mount Watson in the Uinta Mountains. About seven miles below Bald Mountain, those of us riding in my vehicle observed a bull moose in a meadow. What a spectacular site!

We started hiking at the Crystal Lake Trailhead along the Smith Morehouse Trail. Approximately an hour later, we were at the base of Mount Watson on the southwest side. From there it was 900 vertical feet of rock scrambling to the top (11,521 feet). Initially it was calm on top of Mount Watson. However, when the sun hid behind the clouds and the wind started blowing, it was cool enough to put jackets on. While eating lunch, we enjoyed visiting with each other, and also the panoramic view of Bald Mountain, Notch Mountain, Wall Lake, Clyde Lake and Twin Lakes. We then took an easier route down the north-east slope of the mountain. To my surprise there were three patches of snow, one of which was quite large. Several of us had fun sliding on it. Next we connected with a trail on the west side of Wall Lake which returned us to the Crystal Lake Trailhead.

This was truly a sensational hiking trip for me! The weather was ideal for hiking (it even drizzled for a short time). I enjoyed the beautiful wildflowers, the spectacular view from the top of Mount Watson, and the company of my fellow hikers. Looking forward to seeing you next Summer in the Uintas!!

"Mount Watson" Hikers: Sharon Allhands, Michael Budig, Chris Farrow, Linda Kosky, Ron Kosky, Gloria O'Connor, John Shavers, Chris Venizelos (leader), Ann Wechsler.

ANNUAL FALL HIKE TO NOTCH PEAK

By Wick Miller

The weather report was not good, so it seems a number of people decided to sleep in. Those that did so missed a great day. Being the first day of hunting season, we headed to one of the great deerless areas of the state southwest of Delta. A baker's dozen plus three dogs showed up at 6:00 A.M. and we were on the trail before 10:30.

A clear sky, clear air with a view forever, and a dusting of snow on top made it a special day. Hikers were: George Swanson, Michael Budig, Hank Winawer, Jennifer Harrington, Cassey Baddowski, Mary Ann Losee, Monty Young, Shirley Young, Brian Barkey, Floyd Durrant, Tom Walsh, Joe Parchesky, Butch, Mieka, Star, and your reporter, Wick Miller.

GOSHUTE MOUNTAINS BACKPACK

by Elliott Mott

The Mountain Club recently sponsored a backpack to the Goshute Mountains on the Utah/Nevada border to observe and participate with HawkWatch International in their yearly project to count the Southern migration of hawks. Part of HWT's project is to trap and band as many birds as possible, so that a data base can be established with regard to the number of birds migrating, species, sex, age, health, size, weight, etc. The birds are then released.

WIND RIVERS BACKPACK

July 20-24

Photo & Story by Ray Wenger

"One of the best hikes I've ever taken." I felt that way. Others expressed it too about this beautiful adventure that found us at the top of East Temple Peak (12,590 feet) in the Wind Rivers area of Bridger Wilderness. The views in every direction were magnificent with rugged peaks of 11,000 to 13,000 feet (the whole area being part of the Continental Divide) and lakes, large and small, abounding. Row upon row of mountains extending into the distant gray. The day was clear with just enough clouds to make for beautiful skies except in the distant northwest. There, foreboding clouds darkened, boiled and were obviously moving in our direction. Before leaving the top, each of us carefully crawled out onto the end of a cantilevered rock extending about 12 feet beyond the edge to look over the end straight down to the lakes below at 10,800 feet--a vertical distance of almost 1,800 feet. For acrophobics, a real "lunch loser".



Several of our intrepid group, noting the darkening clouds on the horizon, moved us to end our 50 minute adventure atop and to move hastily over the edge back down to lower ground. Barbara Pollyea and Dave Hardy had wisely started down a little earlier. The storm had indeed appeared to be moving rapidly in our direction, but I think all of us were surprised how quickly the lightening and thunder surrounded us in the peaks above. We had made the 1,900 feet descent rapidly, but not enough so. Getting to Temple Lake (a very large, long lake lying at 10,650 feet between East Temple Peak and the higher Temple Peak, 12,972 feet), rain and hail hit. Eight of us (Lynn Jones, Janet Friend, Fred Zurner, Don Ashton, Linda O'Steen, leader Eldon (West) Madsen, Doug Smith, and your author, Ray Wenger) found shelter under a large rock overhang. There for about 45 minutes we consumed gorp, fruit, rice cakes (very slowly) and blackberry brandy. We knew that it could rain into the night. When the rain slowed a bit, we decided to venture out. Fortunately, the clouds moved out and the rain-freshened forest was warmed again by the sun. What a sensual feast of smells, sounds, dancing light and warm sun with cool wisps on the skin. The remainder of the hike to our camp at Big Sandy Lake (9,690 feet) was similarly spectacular. A perfect day -- and a day of spectacular contrasts.

Rip Johnson and Lee Brinegar took their hike to Jackass Pass three days later while we were hiking East Temple Peak. During the whole four days, our group of fifteen usually broke into smaller, more personal groups, both for camping and hiking. However, some of us (like your author) could not stay away from the group that was having the delicious cheesecake (made in camp by Fred). No "sacrifices" for those campers.

The entire Wind Rivers backpack trip was well led by Eldon (West) and was certainly among my favorite four-day adventures.

ANNUAL POETRY HIKE

October 6

By Bryce Baker

Photo by Azaoeh Saljoghi



How I was volunteered to write up this hike, I will never know. Well, here goes.

When our illustrious leader, Vince Desimone, arrived at the gathering point for the hike, he was greeted by several apprehensive hikers. The weather had turned much colder and it looked like rain would fall at any moment. But as eager budding poets, or otherwise, all opted to chance the weather and were off to the Terraces for the hike. There was very little hiking between stops for the recitation or reading of a poem. Some poetry being spur of the moment creations and others being classics, and there were many others in between. Poems about places, feelings, people and beasts. On the trail we briefly saw a golden eagle, a squirrel, and a deer. Christie Price created a line or two to describe a portion of these events.

After a short distance on the Terrace Trail, Vince decided to show us where an old cabin was located, just the length of a football field off the main trail. That was the longest football field most of us had ever experienced. I thought we would never get there. We did find the cabin, but it looked more like an old temporary holding corral for cattle. Vince convinced us that at one time there was a roof and it had been a cabin.

After lunch, being daring and venturous souls, we agreed to return, by what Vince said was a better and shorter trail. To return by the same trail would again include climbing over and under numerous small and large fallen trees. In our search for the new trail, many of us wondered if any such trail existed, as we bushwhacked up a steep hill to the ridge above. We did locate the trail and were on our way back to the cars. When only a few hundred yards from where the cars were parked, someone got the not so bright idea that we could again take a short cut, and go down a little hill to the parking area. The little hill became an almost straight down grade. However, we did all safely arrive with little more for wear than a few scrapes and bruises.

ANNUAL POETRY HIKE

(continued)

It was a great hike. It didn't rain. The fall colors were spectacular, particularly as viewed from the infamous ridge trail. I believe it was enjoyed by all. Several suggested similar hikes be done more than once a year.

Seventeen participated. The names were (as best as I can decipher per the Release Form): Vince Desimone, Floyd Durrant, Kristie Price, Kathie Keeler, Ferrel Thomas, Beverly Lujan, Azadeh Saljoghi, Linda Wilcox, Bryce Baker, Sandee Ray, William Galeazzi, Andrew Galeazzi, Sandi Rawson, Hunnelore Janke, Mike Monteith, Mike Eisenberg, Bob Wright.

CLAYTON PEAK (aka MOUNT MAJESTIC) NEWCOMER'S HIKE

June 30, 1990
By George Healy

A large crowd was assembled by 9:00 AM at the bus area, mouth of Big Cottonwood Canyon (aka Bigmouth). The temperature was already in the low nineties. Two trips were going, the first to leave was for Mule Hollow. After they had gone, the crowd seemed undiminished, so Leader Jerry Hatch continued sign-up, filling the twenty-two spaces on the front of the sheet, and then working on the back, where another eleven found room. We then started a long procession up the canyon, parking near the ticket booth at Brighton in three rows. Here three of four seceded, finding the bunch too numerous, and left for Catherines Pass and Sunset. At 9:50 the rest took off up the Nature Trail, in three groups--the Ridge Runners soon out of sight, the middle group with Jerry Hatch, and a small group of turtles with the writer, whom Jerry had kindly introduced as "the oldest active hiker in the club." I am now 81.

There were not very many flowers on this part of the hike. The columbines had only a few white blossoms showing, but it would become great in another week or two. Then up to Dog Lake, and left on the Snake Creek Pass trail through nice cool woods, with a few wet spots where snow had not yet melted completely. After crossing one of the down-hill cuts we got to a swampy area, all carpeted with thousands of white flowers with yellow centers, Jerry identified them as "composites". When we got to this place on the way up, a half dozen Ridge Runners came out of the woods on the left, grumbling that they had lost their way, and had gotten into a dreadfully steep area. Soon the trail was at Snake Creek Pass, with a slightly hazy view of Timpanogos, and the other northern mountains.

CLAYTON PEAK (aka MOUNT MAJESTIC) NEWCOMER'S HIKE

(continued)

There were half a dozen people left there, the rest had already departed for the summit, or else were still battling the wrong way. A few of those remaining decided they had had it. The writer continued after half a sandwich and some still partly frozen water, and climbed the main peak alone, this time not making the mistake of going straight at the right turn of the trail to get over to the north side of the ridge. It seems that quite a few of the Ridge runners had tried to go straight and had to fight their way up to the ridge. The more haste, the less speed. When I was almost at the summit, I was met by Mike Treshow and a girl coming down. One of the Snake Creek people had said she would wait there for him. Two hours and thirty minutes after leaving the Brighton lot, I arrived at the summit, only fifteen minutes longer than the suggested time in John Veranth's "Hiking the Wasatch". I suppose that by the time I reach one hundred, I'll have to allow three hours.

The summit cone was carpeted with all sorts of tiny flower pads in various colors which made the climb enjoyable, as I had a good excuse to stop and catch my breath, which was eluding me. Our leader said he counted twenty-seven on the summit; he and three others waited for me to get down safely, so apparently he lost no-one permanently.

Though called a "Newcomer's Hike," there were also a lot of old timers whom I had known from soon after first coming to Utah sixteen years ago. For example, Margaret Strickland, Janet Friend, Joan Proctor, and Chuck Ranney. The others who had signed up were John and Monika Arnold, Les Woods, Johnnie Peters, Ch. Kavelmann, Annemarie Ferrari, Lorak Teerlink, Chris Biltoft, Kehshin Chi, Merrilee Clouard, Elliott Mott, Jack York, Doug Merrill, Pat Arnold, Tracie Thurgood, James Mallon, David Burt, Mendel Cohen, Marilyn Gull, Doug Perkins, Karen Hildreth, Duane Call, Ann Waters, Barbara Wescott, Hannelore Janke, and John Shavers. Thanks to all of them who wrote their names legibly.



Dry Canyon Walkabout Hike,
Led by Kristina Moran
October 13, 1990
Photo by Richard Zeamer



Millcreek to Parkwest Overlook, Desolation Lake, Dog Lake-Millcreek Mountain Bike Ride, Oct. 13. Photo by Lade Heaton.



Park City to Kamas Ride, Oct. 14.
Elliott Makes His Departure
Presentation. Photo by Lade Heaton

CLASSIFIED ADS

AD POLICY

Members may place classified ads for used sports equipment free of charge. Other classified ads require a \$5.00 donation to the WMC for up to 20 words with \$.20 per word over 20. Words of 2 letters or less will not count as a word.

NOTICE!

Send your ad (with a check enclosed if it is not a used sports equipment ad) before the 13th of the month to Sue DeVall, 11730 South 700 West, Sandy UT 84070 or call Sue at 572-3294 for information.

The *Rambler* cannot accept any ad that is inconsistent with the purposes of the WMC, or that offends the sensibilities of club members.

HOUSING

Big South Valley home to share. Private bath, 2 bdr., den, living room, storage. Share kitchen & utilities. Pets, horses ok. Prefer 1 or 2 adult women. \$360/mo. Call Sue 542-3294.

USED EQUIPMENT

Asolo superscout boots womens 7 1/2 tan, very good condition \$120 new. Sell for \$50. 562-2488

Ski boots. Rossignol 900. Used 4 times. Call Paul 277-2849.

Climbing shoes, Sportiva Tao size 34. \$80. Call Merrill Bitter. Home 278-7004. REI 486-2100.

Mountaineering Ski Package. Near new.

*Blizzard 195 cm Alpine Extreme skis

*Silveretta bindings

*Dynafit toutlite boots size 10 1/2

\$300 o.b.o. Call Gordon 1-563-6482.

Ski rack. Barrecafter excellent condition. \$50. o.b.o. Call Lara 485-6451.

Wasatch Mountain Club

Membership applicants must participate in at least two Club outdoor or service activities, verified by the signatures of approval from the activity leaders. Yearly dues are \$25.00 single, \$35.00 couple. A \$5.00 initiation/reinstatement fee is charged.

1990-91 GOVERNING BOARD


President	John Veranth	278-5826
Secretary	Jim Elder	943-3321
Treasurer	Cynthia Anderson	359-8823
Membership	Julie Ann Jones	278-4753
Boating	Jeff Barrell	278-3510
Conservation	Janet Friend	268-4102
	Keith Johnson	268-2453
Entertainment	Marc Hutchinson	355-3227
Hiking	Jerry Hatch	467-7186
	Gene Woodridge	973-8073
Lodge	Vince Desimone	1-649-6805
	Kathy Klein (rentals)	272-8059
Mountaineering	Tony Thompson	363-9891
Publications	Pat Beard	596-8099
Ski Touring	Norm Fish	964-6155
Information	Barbara Jacobsen	943-3715
	Aaron Jones	467-3532

COORDINATORS

Bicycling	Rich Gregersen	467-6247
	Nance Randall	485-1483
Canoeing	Randy Klein	485-3360
Kayaking	Marlene Egger	277-2894
Sailing	Vince Desimone	1-649-6805
Rafting	Lidia DiLello	943-3321
	Jim Elder	943-3321
Volleyball	Doug Stewart	269-1833

TRUSTEES

Karin Caldwell	942-6065
Dale Green	277-6417
Milt Hollander	277-1416
Alexis Kelner	359-5387
O'Dell Peterson	Trustee Emeritus
Dale Green	Historian



Windows

Charles Lesley
364-2486

Washed

Commercial
Residential

WMC Member

WASATCH MOUNTAIN CLUB

APPLICATION FOR NEW MEMBERS/REINSTATEMENT FOR PREVIOUS MEMBERS
RAMBLER SUBSCRIPTION QUALIFICATION FORM

DO NOT USE THIS FORM TO RENEW YOUR MEMBERSHIP

Please read carefully and fill out completely. Your signature is required.

APPLICANT'S NAMES: _____

ADDRESS: _____ CITY _____ ST _____ ZIP _____

HOME PHONE _____ DAY PHONE _____ BIRTH DATE _____

I hereby apply for ☐ NEW MEMBERSHIP ☐ STUDENT
☐ SINGLE membership in the WMC
☐ REINSTATEMENT ☐ COUPLE

I ☐ DO
I ☐ wish to receive the *Rambler* (the WMC publication). Subscription price
☐ DO NOT is not deductible from the dues.

Enclosed is \$ _____ for one year's (Mar 1 19__ to Feb 28 19__) dues and application fee.
*** Make checks payable to Wasatch Mountain Club (CHECKS ONLY) ***

Remit: \$20.00 for student membership (\$15.00 dues and \$5.00 application fee)
\$30.00 for single membership (\$25.00 dues and \$5.00 application fee)
\$40.00 for couple membership (\$35.00 dues and \$5.00 application fee)
(NOTE: These rates include the \$12.00 for the *Rambler* subscription)

YOU MUST COMPLETE THE FOLLOWING FOR MEMBERSHIP CONSIDERATION
THE ACTIVITY DATES MUST HAVE BEEN WITHIN ONE YEAR OF THIS APPLICATION
qualifying activity _____ date _____ signature of recommending leader _____

1. _____

2. _____

I agree to abide by all the rules and regulations of the WMC. I am 18 years of age or older.

I am willing to serve the WMC in the following areas: (please check)

☐ Service Project ☐ Lodge work ☐ Conservation ☐ Rambler ☐ Thurs Night Hikes
☐ Hike Leader ☐ Boat Leader ☐ Ski Leader ☐ Social Assist

I found out about the WMC from _____

APPLICANT'S SIGNATURE: _____

MAIL APPLICATION AND CHECK TO: MEMBERSHIP DIRECTOR
WASATCH MOUNTAIN CLUB
888 SOUTH 200 EAST, SUITE 111
SALT LAKE CITY, UTAH, 84111

LEAVE BLANK

Receipt #: _____ Date Received: _____ Amount Recv'd: _____
(or check #) (less application fee)
Board Approval Date _____ (Rev 7/88 Pub 10/90)

IN CASE OF EMERGENCY PLEASE NOTIFY
THE SALT LAKE COUNTY
SHERIFF'S OFFICE AT:

535-5855

OR THE APPROPRIATE EMERGENCY
AGENCY IN YOUR LOCATION.

WASATCH MOUNTAIN CLUB
888 SOUTH 200 EAST, SUITE 111
SALT LAKE CITY, UT 84111

12/90

SECOND CLASS
POSTAGE PAID
SALT LAKE CITY, UT
NO. 053410