

The Rambler

WASATCH MOUNTAIN CLUB

JUNE



VOLUME 67, NUMBER 6. JUNE 1990

MEMBERSHIP LIST ENCLOSED

The Rambler

STAFF:

EDITOR: Pat Beard

ADVERTISING: Jill Pointer

CLASSIFIED ADS: Sue deVall

MAILING: John Battalio, Rose Lowrey, Rose Novak

PRODUCTION: Pat Beard, Geoff Freethey, Sandy Freethey, Magdaline Quinlin

SKY CALENDAR: Ben Everitt

TYPING COORDINATOR: David Vickery

TYPISTS: Diane Little, Phyllis Papan, Clari Powers

THE RAMBLER (USPS 053-410) is published monthly by the WASATCH MOUNTAIN CLUB, Inc., 888 South 200 East, Suite 111, Salt Lake City, UT 84111. Telephone 363-7150. Subscription rates of \$12.00 per year are paid for by membership dues only. Second-class Postage Paid at Salt Lake City, UT.

POSTMASTER: Send address changes to THE RAMBLER Membership Director, 888 South 200 East, Suite 111, Salt Lake City UT, 84111. CHANGE OF ADDRESS: This publication is not forwarded by the Post Office. Change of address should be submitted in writing to the Membership Director, 888 South 200 East, Suite 111, Salt Lake City, Utah, 84111. All correspondence regarding the mailing of THE RAMBLER should be directed to the Membership Director at that address. Allow 45 days for address changes.

The right is reserved to edit all contributions and advertisements and to reject those that may harm the sensibilities of WMC members or defame the WMC.

Copyright 1990, Wasatch Mountain Club

RAMBLER INFORMATION

IF YOU MOVED: Please notify the WMC Membership Director, 888 South 200 East Suite 111, SLC UT 84111, of your new address.

IF YOU DID NOT RECEIVE YOUR RAMBLER: Contact the Membership Director to make sure that your address is in the Club computer correctly.

IF YOU WANT TO SUBMIT AN ARTICLE: Articles, preferably typed double spaced, must be received by 6:00 pm on the 15th of the month preceding publication. Mail or deliver to the WMC office or to the Editor. Include your name and phone number on all submissions.

IF YOU WANT TO SUBMIT A PHOTO: We welcome photos of all kinds: black & white prints, color prints, and slides. Please include captions describing when & where the photo was taken, and the names of the people in it (if you know). We will return photos if you ask us to.

DEADLINE: Submissions to THE RAMBLER must be received by 6:00 pm on the 15th of the month preceding the publication. Mail or deliver to THE RAMBLER office. Include your name and phone number on all submissions.

THE RAMBLER

THE RAMBLER, the official publication of the Wasatch Mountain Club is published monthly by and for its members. Persons wishing to become members may receive THE RAMBLER for two months by writing the Membership Director, 888 South 200 East, Suite 111, Salt Lake City, UT, 84111 and enclosing \$3.00. Checks are to be made payable to the Wasatch Mountain Club. There is a \$10 charge for returned checks.

JUNE 1990

From the President	3
Hiking	3
Mountaineering	4
Kirkhams	5
Information	6
Boating	7
Events At A Glance	8
Activities	9
..continued	39
Membership List	19
1990 Boat Trips	44
Trip Talk	45
Classified Ads	53

Cover Photo by Phyllis Papan

WMC PURPOSE

(Article II of the WMC Constitution)

The purpose shall be to promote the physical and spiritual well being of its members and others by outdoor activities; to unite the energy, interests and knowledge of students, explorers and lovers of the mountains, deserts and rivers of Utah; to collect and disseminate information regarding the Rocky Mountains in behalf of science, literature and art; to explore and picture the scenic wonders of this and surrounding states; to foster awareness of scenic beauties; and to encourage preservation of our natural areas including their plant, animal and bird life.



FROM THE

PRESIDENT

by John Veranth

NOTICE

The club owns a lot of gear that is lost or unaccounted for. If you have any club gear "hiding" in your basement, call the appropriate director and get it back into circulation. Known missing items include: climbing helmets, a file cabinet, some Thursday night hamburger gear, and a notebook with old hiking director records. What else is out there? Avalanche probes?

FROM THE

HIKING DIRECTOR

by Gene Wooldridge

NOTE

It has become apparent that a few things need to be said.

At our last board meeting there was a concerned discussion about activity leaders. After notable comments from most of the board members, we derived a statement. That statement concerns the responsibility of being an activity leader. The statement:

"The leader has the right and the responsibility to refuse participation to ANYONE if that person is unprepared or unqualified. If this is not determined until the activity is under way, the leader must escort anyone deemed off the trip to a position of safety where a reasonable adult can take care of themselves."

All club members should realize that activity leaders are volunteer, and should be treated with the respect and gratitude that is deserved.

We are aware that there are many members that are being missed for leading activities. Don't be shy; call the appropriate activity director and let your interest be known.

Please realize that we must schedule well in advance to insure the number of activities that we have. We are having a particularly hard time finding enough people to lead car camps, backpacks, and family oriented activities. Please call us as some members are doing more than what is fair because of lack of volunteers.

Another possibility that may interest some members is short term or last minute volunteers. We understand that a lot of people can't commit time in advance. If those interested could let us know we could have a short notice list allowing more leeway for all.

Special thanks to our hike leaders, you're the ones that keep hiking alive and well.

HAPPY HIKIN'



MOUNTAINEERING

MOUNTAINEERING DIRECTOR

by Tony Thompson

The Governing Board has given the climbers a much needed (and appreciated) budget to purchase some new basic equipment. We now have 5 excellent new ropes, 5 ice axes, and 10 helmets (6 new, 4 older). The ropes and helmets will be available Thursday evenings on a first come first served basis. Members may also check out this equipment for climbing activities. Call me for more details at 363-9891.

FROM THE ENTERTAINMENT DIRECTOR

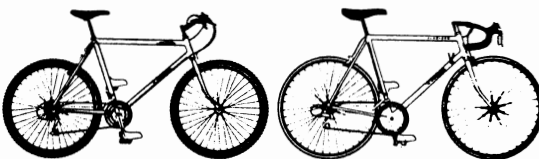
by Marc Hutchison

The John Muir birthday party, cancelled at the last minute, has been rescheduled. The (very belated) John Muir birthday party will be held at the Lodge in Brighton on Saturday, September 8. Details will be published in an upcoming Rambler. My apologies to anyone who made the effort to get up the canyon in the snow, only to be disappointed.

At the recent Mom's day car camp in Arches, a question came up: Why not have a party for families with kids? So on Saturday, August 18, there will be a family potluck barbecue and overnighter at the lodge in Brighton. If you have any ideas about what we should do, give me a call. (By the way, this will be open to all, not only families with kids.)

We have a number of activities planned for the next few months, including a potluck dinner and dance in June, and Coffeehouse and the Old-timer's party in July. If you have input for the Entertainment committee, please don't hesitate to call.

TREK[®]



MOUNTAIN BIKES **ROAD BIKES**

FULL SELECTION OF TREK BICYCLES NOW IN STOCK

STOUT^{BY}cycles

NOW WITH 3 LOCATIONS:

1330 EAST 200 SOUTH
581-9693
2815 SOUTH HIGHLAND DR.
467-7638

NEW STORE:
846 EAST 7200 SOUTH
566-1458

SPONSOR OF THE
PEDELI RACING CLUB

TREK USA

JOHN MUIR'S BIRTHDAY BASHED

Gail Cordy
Salt Lake Scottish Country Dances

To all who showed up at the Mountain Club Lodge on April 28 for the Second Annual John Muir Birthday Party - The party was cancelled at about 6:45 P.M. due to bad weather, poor road conditions, and our inability to get the bands and equipment up to the lodge. I apologize for the inconvenience to those who drove up to the Lodge and found no party! But do not despair... we have rescheduled the John Muir Birthday Party for Saturday, Sept 8, 1990. This one will not be cancelled. Don't miss the live music, dancing, and fun. More information will appear in the August Rambler.

KIRKHAM'S.

Your Only Store When You're Heading For the Great Outdoors.



Here's a sampling of the Spring and Summer items that we have available for you:

OUTDOOR CLOTHING

- The North Face
- Woolrich
- Patagonia
- Royal Robbins
- Columbia
- Gramicci
- Sierra Designs
- Big Dog
- Kokatat
- Marmot
- Moonstone

FOOTWEAR

- Asolo
- Vasque
- Merrell
- Fabiano
- Hi-Tec
- Danner
- Technica
- Nike
- Pivetta
- Joseph Seibel
- Koflach
- Teva
- Birkenstock
- Timberland

SUNGLASSES

- Ski Optics
- Vaurnet
- Style Eyes
- Jones
- Ziari

PACKS

- Dana Design
- Kelty
- Lowe
- North Face
- Camp Trails
- Jansport
- M.E.I.

TENTS

- Springbar®
- Eureka
- North Face/Windy Pass

SLEEPING BAGS

- Slumberjack
- Everest Elite
- Marmot
- North Face

Kirkham's Outdoor Products

Manufacturers of quality products for the great outdoors.

• Daypacks • Fanny Packs • Tents • Gaitors • Luggage • Overmitts
All made right at our factory/store, so we're able to pass along factory direct pricing to you.



3125 So. State 486-4161 Mon.-Thurs.9:30-8:00, Fri. to 9:00, Sat. to 6:00

DAMMING OF THE BIO BIO RIVER

by Bill Soltis

Preparations have begun for damming the world famous Bio Bio River in Chile, South America.

The government of Chile just changed hands for the first time in 16 years, so the time is right for anyone interested in preserving the Bio Bio to speak up! Newly elected president Patricio Aylwin is dedicated to social progress and is concerned about human rights.

Damming of the Bio Bio would wipe out the last refuge of the Mapuche Indians. The dam would also destroy animal and plant habitat in the river corridor.

The ill-conceived project is designed for hydroelectric power generation.

The dam is economically unsound as: 1) Cost outweighs benefits, 2) The distance power would have to be transmitted is too far to make the power worthwhile, 3) Chile can't afford the cost - \$350 to \$600 Million dollars, of which half would go to companies outside Chile, adding to Chile's foreign debt, 4) The dam is geologically unsound (built near two active volcanos - one erupted in 1989), 5) The dam would destroy a tourist mecca (Bio Bio) which has been likened to the Grand Canyon.

Damming the Bio Bio River should be opposed for environmental, human rights, economical, and ethical reasons. Other low cost, low impact, hydroelectric projects are advisable rather than destroying such a priceless world treasure like the Bio Bio.

Your letter can make a difference!

Send letters to:
President Patricio Aylwin
Palacio de la Moneda
Santiago, Chile, South America

TRAIL MAINTENANCE DAY

JUNE 23

The WMC and Forest Service are getting together on Saturday, June 23 for a day of trail maintenance along the Wasatch. Planned activities include brush & deadfall clearing, trail restoration, water bar construction, and litter pickup. Volunteers for brush clearing are encouraged to bring shears and loppers. The Forest Service will supply other tools. The Club will again sponsor a cookout at the Lodge starting at 3 P.M. Bring work gloves, water, and a light lunch to the 9 A.M. rendezvous at the Big Cottonwood Canyon parking lot for an exhilarating day of work in the Wasatch.

TURN US ON, MOAB PUBLIC RADIO!

Moab Public Radio is a non-profit corporation created by local citizens to plan, build, and operate a public radio station in Moab. The station is intended to serve as a source of news and information, a forum for debating issues, an educational resource and as an emergency broadcast station.

The proposed 100 watt station will bring National Public Radio programs and other programming available through translator feed from KUSU-FM (USU). Locally produced programs will provide music, news, and information.

Moab Public Radio has submitted a proposal for federal funding totaling \$114,360 for construction of a bare-bones facility. The federal share is \$85,770 and the remaining \$28,590 must be raised through donations of money and in-kind services. Some funds have been already pledged.

Any amount will help! Send donations to :

Moab Public Radio
895 Oak Street
Moab, UT 84532

Information is available from Susanne Mayberry 259-6073, Bill Bengé 259-6833, Kyle Bailey 259-8897.

FROM THE

BOATING DIRECTOR

FROM THE CANOEING COORDINATOR

by Randy Klein

The Idaho Outfitters and Guides Association is sponsoring a River of No Return "Idaho Centennial Commemorative Float Trip" on the Salmon River this summer. There are 12 separate float segments, starting June 17 in Stanley and finishing on July 7 in Lewiston. All segments can be run with commercial outfitters, and private parties are invited on all but the Main Salmon permit section (Corn Creek to Vinegar Creek). If you want to run the permit section without a permit, you must launch by June 19th. The commemorative launch date is June 23 for that section (to avoid extreme overcrowding of campsites). For more information, call 208-342-1438.



Touring Canoes
Whitewater Canoes
Sea Kayaks

**WE•NO•NAH, DAGGER
& AQUATERRA
SOLO & TANDEM BOATS**

Call To See Stock
& Learn Which Boat Is
Right For You

CUSTOM ORDERS WELCOME
RENTALS AVAILABLE

**BEAR RIVER CANOE CO.
(801) 533-9090**

FROM THE KAYAKING COORDINATOR

by Marlene Egger

Another low-water year! This is a good time for beginning and novice kayakers, as water levels in general won't be as pushy as usual. The standard maxim applies to bomb-proof the old river roll, and possibly to try out a shallow-water roll. There are likely to be a few close encounters with the river bottom this year.

Thanks and congratulations are due to Janis Huber for a second year of her characteristically successful management of the winter/spring pool roll practice sessions. They were great!

For the rest of the summer, roll practices are generally organized informally and held at East Canyon or Echo Reservoir. You are invited to call me if you want to be on the "interested" list, or if you are looking for buddies for a particular date. The boating trip schedule for the rest of the year has been published, but many trips are typically organized informally after the *Rambler* has gone to press, so please feel welcome to call me, Janis, or other WMC kayakers to check on short-notice trips.



EVENTS AT A GLANCE

June
10 Bookcliffs
23 Escalante Canyon

June
2 Kamas Valley
3 Big Cottonwood
5 City Creek Canyon
6 Emigration Canyon
9 Pineview

June
2 Desolation Canyon
4 Main Salmon
9 Rescue Course
12 Alpine Wk Pty

June
3 Thunder Mt
7 Gate Buttress
14 Storm Mountain

June
2 White Fir Pass
2 Days Fork
2 Thayne's Peak
2 Mt Raymond
2 Peak-Peak Sprint
3 Cardiff Pass
3 Flagstaff Peak
3 Wildcat Ridge
3 Dog Lake
7 Mill Creek
8 Grandeur Peak
9 Van Cott Peak
9 Terraces
9 South Willow Lake
9 The Beatout Hike

June
23 Work party

June
16 Potluck

30 Deep Creeks
30 Henrys Fork Uintas

10 Crompton's
13 Emigration Canyon
17 Spring Chicken Inn
19 City Creek Canyon

16 Alpine
19 Alpine Wk Pty
23 Alpine
25 Lochsa Wk Pty

16 City of the Rocks
21 Gate Buttress

10 Reynolds Peak
10 Gobblers Knob
10 Willow Lake
10 Red Pine Lake
14 Big Cottonwood
14 Red Lake, Payson
16 Flower Hike
16 Lake Blanche
16 Box Elder Peak
17 Toll Canyon
17 Greens Basin
17 Grandview Peak
17 Sunset Peak
17 Maybird Lakes

23 Potluck & dancing

BACKPACKS

BIKING

20 Millcreek Canyon
23 Wellsville Mt.
26 Parleys Canyon
29 Yellowstone

BOATING

26 Salmon Wk Pty
27 Lochsa River
28 Main Salmon
30 Payette River

CAR CAMPS

28 Storm Mountain
30 City of the Rocks

HIKES

21 Mill Creek
23 Trail Maintenance
24 Broad's Fork
24 Beatout (Turtle)
24 Park City Overlook
24 Alexander Basin
24 Pfeifferhorn
28 Big Cottonwood
30 Mule Hollow
30 Clayton Peak
30 Sugarloaf
30 Lone Peak

LODGE

SOCIALS

VOLLEYBALL

Monday Evenings, 6:30 at Fairmont Park

July
3 South Snake Range
3 Beartooth Mts
4 Jarbidge Mts

July
7 Oakley Rodeo
11 Emigration Canyon

July
?? Arkansas
10 Hell's Canyon
10 Main Salmon W. P.
11 Alpine Canyon W.P.

July
1 Cecret Lake
1 Lake Lillian
1 Flagstaff Peak

July
1 Neffs-Thaynes
4 Gobblers Knob
4 Twin Lakes Pass
4 Mineral Fork
4 Little Water Peak
5 Mill Creek
6 Reynolds Peak
7 Reynolds Peak
7 Mt Nebo
7 Lake Lackawaxen
7 Maybird Lakes
8 Mt Superior

14 Uintas
20 Wind Rivers

14 Parleys Canyon
20 Brian Head

14 Alpine Canyon
16 Main Salmon

8 Mt Evergreen
8 Days Fork
8 Broad's Fork
12 Big Cottonwood
14 Mt Naomi
14 Red Pine Lake
14 Cascade Peak
14 Cassie's Beatout
14 Lambs Canyon
15 Stansbury Ridge
15 Lake Katherine
15 Mt Baldy
15 North Willow
22 Little Water (Kids)
28 Millcreek Ridge

July

July
1 Sunday Social
14 The Coffeehouse

15 Sunday Social
28 Old Timer's Party

PROSPECTIVE MEMBERS

- are welcome on ALL club activities, with these exceptions:
- 1) Thursday Evening Hikes are for members only. However, prospective members may attend if the hike is their second qualifying activity for membership and they submit their dues check and application form to the leader before the hike.
 - 2) Boating trips are for members. However, prospective members may attend a weekend trip if they use the trip as their qualifying activity (each day counts as one activity.)
 - 3) A trip leader may choose to limit a trip to members, especially if there is limited space.

WMC HIKES: The hike rating indicates the difficulty of the hike. Hikes rated under 5 are easy, 5-8 are intermediate, above 8 are difficult. A hike may be more difficult than the rating would suggest. Watch for the terms "exposure", "rock scrambling", "bush whacking", and "steep". If you have any questions about a particular hike, feel free to call the leader ahead of time. Please come to the hike with proper equipment: adequate clothing, footwear, food, water, and any special equipment required for that hike. You must sign the liability release form to participate in any hike, and you are expected to stay with the group during the hike.

WMC BIKE RIDES: Rides are rated Not Too Difficult (NTD), Moderate (MOD), or Most Difficult (MSD). NTD rides will generally be less than 30 miles. MOD rides will be 30 to 50 hilly or up to 60 flat miles. MSD rides will be over 50 hilly or 60 flat miles. On all but newcomer rides, riders must bring their own water, food, tire repair tools, extra tubes, repair knowledge, sunscreen, and money. Consider wearing protective gear. Helmets may be required on some rides.

THURSDAY EVENING HIKE INFORMATION: These hikes are for members only except prospective members may use them as the second and final qualifying activity for membership provided their dues check and application are submitted to the leader prior to the hike. Meet at 6:30 pm: all hikes leave the meeting place at 6:45 pm PROMPT! All participants must sign the liability release form. Hikes are never cancelled for any reason including bad weather, so wear appropriate clothing. Boots will be required if the trail is in mud or snow. No dogs. Hikes in Mill Creek Canyon meet in Olympus Hills parking lot at 3900 Wasatch Blvd. just south of the defunct Bagel Nosh. Hikes in Big Cottonwood meet at the Storm Mountain Quartzites geology sign, 2.9 miles up the canyon (rh side) from the spotlight. Leader: Dale Green.

CLUB ACTIVITIES

Only activities approved by the appropriate WMC Director can be listed in the Club Activities section of the *Rambler*. Send your proposed activity, for approval, to the hiking, rafting, skiing, etc. director for inclusion in their activity schedule. Those activities sent directly to the *Rambler*, without approval, will not be published.

Sat. June 2

WHITE FIR PASS FAMILY HIKE. Rated 3.1. Bowman Fork is a good place to introduce your kids to the beauty of the Wasatch, with first flowers of spring gracing the streamside. This hike is famous for its elegant lavender clematis and its delicate white columbines. Meet Leslie Mullens (363-0560) at the Bagel Nosh in the Olympus Hills Shopping Center at 9:30 A.M.

DAYS FORK TO THE MINE HIKE. Rated 4.6. At the mine there are two big rusting boilers, a pump, and a huge geared wheel which has become a planter for wildflowers. This is all that remains of a once important mining operation. Meet Christine Allred (261-8183) at the mouth of Big Cottonwood Canyon at 9:00 A.M.

THAYNES PEAK HIKE. Rated 7.1. Janet points out that this hike is both steep and "a good leg stretcher." Thaynes Canyon is a rugged, pretty place, and I would suggest that you wear good high-topped hiking boots. Meet Janet Friend (268-4102) at the Bagel Nosh in the Olympus Hills Shopping Center at 9:00 A.M.

HANK'S ANNUAL MT RAYMOND VIA HIDDEN FALLS HIKE. Join Hank Winawer (277-1997) for a little wander in the Wasatch; up Butler Fork to Raymond, and then down to Hidden Falls. Fantastic Scenery. Hank, by the way, is the fastest wit in the west. Meet him at the mouth of Big Cottonwood Canyon at 8:30 A.M.

TWIN PEAKS PEAK TO PEAK SPRINT. Contact Peter Hansen at 359-2040 for details.

KAMAS VALLEY BIKE RIDE (MOD). This 52 mile ride will be a casually paced tour of scenic Kamas Valley. The course is particularly serpentine and circuitous, and promises to revel EVERYTHING you always wanted to know about cycling the back roads around the Kamas area. We'll traverse the valley, exploring the area's nooks and hollows, touring the rural communities of Francis, Woodland, Peoa, Marion and Oakley. We'll meander betwixt and between working farms and ranches, and cycle past some of the areas finest trout streams. The terrain for the most part is easy flat to rolling, notwithstanding a couple of very short climbs. 1.6 miles of the course is unpaved. We'll return to the cars for lunch, so bring a cooler and a picnic lunch. Meet Elliott (968-7357) at the K-Mart/Regency parking lot at 8:00 AM to carpool, or at Kamas Park (75 East 100 South) in Kamas, at 9:00AM. Helmets required.

June 2-7
Sat.-Thu.

DESOLATION (GREEN RIVER) BOATING TRIP (Class III-). Janet Embry (322-4326) will coordinate this one. \$25 deposit required by May 15. River Guide Needed.

Sun. June 3

CARDIFF PASS HIKE. Rated 3 or 4. This is unusual - a relatively easy, seldom done hike. We had a very difficult time getting a leader for this hike, but we were finally successful, and Kathy Coleman (466-5636) will meet you at the mouth of Big Cottonwood Canyon at 9:00 A.M.

FLAGSTAFF PEAK HIKE. Rated 4.3. Clark deNevers points out that this hike is "steep but not long." It is also an interesting hike. There are a few gnarled, old trees at the top, and some narrow rock ridges to walk along, (no exposure however.) Meet Clark (595-7015) at the mouth of Big Cottonwood Canyon at 8:30 A.M.

WILLOW LAKE HIKE. Rescheduled for June 10.

WILDCAT RIDGE HIKE. Rated 15.4. Huff, huff, puff, puff, this is about as tough as it gets. Note also that this hike involves lots and lots of exposure, (and not the kind that requires sunscreen.) Meet Steve Carr (486-7774) at the Bagel Nosh in the Olympus Hills Shopping Center at 7:00 A.M.

DOG LAKE VIA BIG COTTONWOOD CANYON HIKE. Rated 3.8. The route up from Mill D is a little steeper than the Big Water Trail; however you have vastly less chance of getting run over by one of our mountain bike brethren. Meet Rose Novak (487-6034) at the mouth of Big Cottonwood Canyon at 9:00 A.M.

SNOW CLIMBING - NORTH FACE OF THE NORTH PEAK OF THUNDER MT. Route will be up Coal Pit Gulch and out Bells Canyon. An ice ax and competence in using it is required. A headlamp is also recommended. Another full day in paradise (12-14+ hours). If the snow is gone by June, we'll do Thunderbolt Ridge instead. Call Dave Smith 278-6515 to register.

BIG COTTONWOOD BIKE RIDE (MOD). Ride up Big Cottonwood Canyon to Silver Fork Lodge for brunch and the best sourdough pancakes in Utah. Meet Frank Luddington (277-4564) at the "new and improved(?)" parking lot at the mouth of Big Cottonwood Canyon, 9:00 AM.

Mon. June 4

VOLLEYBALL 6:30 in Fairmont Park. Easiest entry and parking is to turn west off 1100 East/Highland (they merge) onto Ashton Ave (2310 South) and go straight into the park. For information, call Doug at 269-1833.

June 4-10
Mon.-Sun.

MAIN SALMON BOATING TRIP (Class III). Joan Hadly (531-0727) will coordinate. \$25 deposit required. River Guide Needed.

Tue. June 5

TUESDAY NIGHT BIKE RIDE (NTD). City Creek Canyon. Join Sam Kingston for this popular ride. Meet at the large parking lot, northeast corner of the Capitol complex, 6:30PM.

Wed. June 6

WEDNESDAY NIGHT BIKE RIDE (NTD). Emigration Canyon. Meet Ceil Meade (572-2035) across the street from the Hogle Zoo parking lot (do not park in the Zoo lot) at 6:30 PM. This 17 mile round trip ride climbs to the top of Little Mountain.

Thu. June 7

THURSDAY EVENING HIKE. Mill Creek Canyon. See "Thursday Evening Hike Information" on page 4.

Thu. June 7

THURSDAY EVENING CLIMBING at the GATE BUTTRESS. Its time for a refreshing change. Come and give the granite a try. Drive 1.2 miles up Little Cottonwood Canyon, look for the large parking area on the left with big boulders in it. It's about 1/2 mile down canyon from the avalanche gate. We'll set up top ropes on the Gate boulder from approx. 6:00 P.M. to 7:00 P.M. After that we'll move up to the "slippery slides" and top rope there till dark. Burgers and BYOB at Tanners Flat picnic area afterwards.

Fri. June 8

GRANDEUR PEAK MOONLIGHT HIKE. Rated 5.7. You can sit up on top of Grandeur and watch the sun set over the Great Salt Lake, while seeing the moon rise in the east. Meet Gene Wooldridge (973-8073) at the Bagel Nosh in the Olympus Hills Shopping Center at 7:00 P.M.

June 8-10
Fri.-Sun.

BOOKCLIFFS EXPLORATORY BACKPACK. This is a joint WMC/Utah Wilderness Association trip, which will give you a chance to explore this seldom visited area. (It is a strange coincidence that we scheduled two Bookcliff backpacks this year.) George Nickas of the UWA knows the area well, having been involved with the reintroduction of Bighorn Sheep into the cliffs. Your WMC leader is our president, Mr. John Veranth (278-5826). Please call to register.

Sat. June 9

VAN COTT PEAK MOONLIGHT HIKE. Rated 2.7. This is something very different for the club. There is a tremendous beauty in the early, early morning, and Wick wants you to see it. From the top you'll be able to watch the sun rise out of the nacreous eastern sky, while off to the west, the moon settles into the Great Salt Lake. Meet Wick Miller (1-649-1790) at 4:00 A.M. in the upper parking lot of the University Hospital. Be sure to bring warm clothing, a flashlight, and a sack breakfast.

TERRACES TO ELBOW FORK & RETURN HIKE. Rated 4-5. Duane Call plans to go up the Bowman Fork Trail, then follow "an old mountain man trail" up to the Terraces trail, proceed to Elbow Fork, and then return via the Pipeline trail. This is your chance for fun and a little bit of exploration on a very easy hike. Meet Duane (485-2980) at the Bagel Nosh in the Olympus Hills Shopping Center at 9:00 A.M.

SOUTH WILLOW LAKE (STANSBURYS) HIKE. The Stansburys are nice, in that they are relatively close, and relatively uncrowded. South Willow is a beautiful lake. I can remember, one afternoon, marveling at the clarity of the water, and hoping that the Stansburys remain lightly visited for a few more years. Meet me, Jerry Hatch (467-7186), at the Union 76 parking lot at the Tooele Exit of I-80 at 9:00 A.M.

SALT LAKE OVERLOOK HIKE. Rated 3.0. Randy will set an easy pace on this very gradual trail. This is a good hike for those of you who complain that we always go too fast. Meet Randy Long (943-0244) at the Bagel Nosh in the Olympus Hills Shopping Center at 9:00 A.M.

THE BEATOUT HIKE. Rated 14. And for those of you who would like something a little bit more strenuous than Randy's hike, contact John Mason (581-1926). John requests that you register by the Thursday before, (June 7th). John says that he will hike the ridges between White Pine Canyon and Bells Canyon. He also promises a fun day - 'nuff said.

Sat. June 9

PINEVIEW BIKE RIDE (NTD). This 35 mile ride is a casually paced tour of the scenic alpine valley surrounding Pineview Reservoir. We'll ride out to Cemetery Point, visit Huntsville Monastery's retail store, and tour the communities of Liberty and Eden. We'll stop along the way for snacks, and then afterward, rendezvous at the Shooting Star Saloon for lunch. The terrain is easy flat to rolling, notwithstanding a one mile climb to Nordic Valley. Meet Elliott (968-7357) to carpool at the Southwest corner of the State Capitol building at 9:00 AM, or at the Huntsville Park (200 South 7500 East), in Huntsville at 10:00 AM. Helmets required.

June 9-10

Sat.-Sun.

BOATING RIVER RESCUE COURSE. Traditionally, graduates of this class proclaim it as the most important activity of the summer. Ken McCarthy is an excellent teacher, in class and on the river. Mark it on your calendar now. Limited participants, so call Tim Poole at 547-9400.

Sun. June 10

REYNOLD'S PEAK HIKE. Rated 5.2. Eric Newby once wrote a wonderful book called A Short Walk in the Hindu Kush. Perhaps we could entitle this hike A Short Walk in the Wasatch Front. Meet your guide, Rob Rogalski (942-8142) at the mouth of Big Cottonwood Canyon at 9:00 A.M.

GOBBLERS KNOB VIA BOWMAN FORK TRAIL HIKE. Rated 8.8. Another chance to hike the big mountain with the funny name. You also have a chance to hike it with a club legend as your leader. Meet Norm Fish (964-6155) at the Bagel Nosh in the Olympus Hills Shopping Center at 9:00 A.M.

RED PINE LAKE HIKE. Rated 5.3. On a bright summer morning, the deep, clear waters of the lake mirror rugged talus covered slopes, and tall stands of fir and spruce. It is one of the prettiest lakes in the Wasatch, and only a 3.5 mile hike. Meet Marv Goldstein (277-4054) at the mouth of Big Cottonwood Canyon 9:00 A.M.

WILLOW LAKE HIKE. Rated 1.5. This hike gives new meaning to the phrase "busy as a beaver" since you can thank the little furry flat-tails for your destination. Carol Beasley (484-6617) says that this will be a leisurely paced hike, which will take in an old, old cabin dugout. Meet at the mouth of Big Cottonwood Canyon at 10:00 A.M.

CROMPTON'S BIKE RIDE (NTD) This 22 mile loop goes up Parleys Canyon, crosses over at Little Mountain, and then descends Emigration Canyon to Crompton's Roadside Cafe for Sunday brunch (after eating its all downhill). Meet Guy (seldom- seen) Benson, in the K-Mart/Regency parking lot at 9:00 AM. For more info call Guy (H: 359-6028, W:466-3971)

TENNIS ROUND ROBIN for intermediate (3.0-4.0) players from 4 to 6 P.M. Call Carol Beasley for information and to register at 484-6617.

Mon. June 11

VOLLEYBALL 6:30 in Fairmont Park. Easiest entry and parking is to turn west off 1100 East/Highland (they merge) onto Ashton Ave (2310 South) and go straight into the park. For information, call Doug at 269-1833.

Tue. June 12

ALPINE BOATING WORK PARTY. Meet at the WMC Boat Storage Center at 5:30 pm at 4317 S. 300 W., # 8. Located just north of ZIM's for all who are going on the June 16-17 trip.

Wed. June 13

WEDNESDAY NIGHT BIKE RIDE (NTD). Emigration Canyon. Meet Rich Gregersen (467-6247) across the street from the Hogle Zoo parking lot (do not park in the Zoo lot) at 6:30 PM. This 17 mile round trip ride climbs to the top of Little Mountain. Bring money for dinner at Cromptons on the way down.

Thu. June 14

THURSDAY EVENING HIKE. Big Cottonwood Canyon. See "Thursday Evening Hike Information" on page 4.

EVENING CLIMBING. Storm Mountain.

June 14-25

Thu.-Mon.

CARIBBEAN SAILING TRIP. Contact Vince Desimone (1-649-6805) for possible cancellations on this trip or to express interest in the next trip to Tahiti October 1990.

Sat. June 16

FLOWER HIKE. (LEADER'S CHOICE) I think that to really enjoy the wilderness, you have to learn to see it. There is an intricate, minute beauty on either side of the trail, if you but stop and observe. Louise Hollander (277-1416) means to do exactly that on her hike, and she invites you to join her at the mouth of Big Cottonwood Canyon at 8:30 A.M.

LAKE BLANCHE HIKE. Rated 5.7. There are some places that seem to be synonymous with summer. Sitting on that big, flat, warm rock, feeling the June sun splash down on the lake, and you, feels like - pure summer. Meet Phil Berger (266-8560) at the mouth of Big Cottonwood Canyon at 8:30 A.M.

BOX ELDER PEAK HIKE. Rated 9.6. Box Elder is the tall peak north of Timpanogos. Your leaders wish to point out that this is a long hike and you need to be in good shape. It is a wonderful hike though. You start out among groves of pine interspersed with small meadows, and then climb up into a rugged ravine filled with boulders and wildflowers. The view from the top makes the effort well worth while. Meet Ilka and Allen Olsen at 7:30 A.M. at the Fashion Place Mall north of ZCMI II. Their number is 272-6305.

RED LAKE IN PAYSON CANYON HIKE. Beware! Look out for famous outlaws and the dreaded Blood Monsters! You will just have to go to find out. Super favorites to us, the rating is about 5. Laura would like to meet at the 72nd South Park and Ride. Call for time and other info, 966-2412.

CITY OF THE ROCKS ROCK CLIMBING. The City offers a variety of short climbs on granite with perfect approaches. Belaying from the front bumper is possible. Only a few hours away in Southern Idaho, it's just the thing for early spring. Leader needed. Please call 363-9891 for more info or to volunteer.

WMC POTLUCK at Don and Audrey Kelley's spacious home in Timberline, starting at 6:30 P.M. Audrey says she misses those big relaxed noisy wonderful WMC gatherings in days of old. Therefore please bring a hot dish or something to barbecue, a salad or dessert, your own drink, \$1.00 to cover paper goods, and a spirit of good fun. Also feel free to bring sleeping bag and pad if you want to stay overnight for the Toll Canyon hike the next day. Directions: Go east up I-80 to the Parleys Summit exit. Follow the Kelley/Stevens signs.

June 16-17
Sat.-Sun.

ALPINE (SNAKE RIVER) BOATING TRIP (Class II). Larry Stewart will lead this popular Club trip. Call him at 485-7818 to confirm your participation. \$25 deposit required.

Sun. June 17

SECOND ANNUAL BLUEBELL HIKE UP TOLL CANYON. Rated 6.5 if Murdock Peak is reached. Trailhead starts at Don and Audrey Kelley's house in Timberline. Hikers may turn back at any time and retrace steps to the house and car (an important factor in Father's Day planning.) Carpooling at 9:00 A.M. at the Regency Theatre parking lot on Parleys Way, and follow instructions given for the WMC potluck of the day before. If you have any questions please call 1-649-9884.

GREENS BASIN HIKE. Rated 2.5. The basin changes its appearance regularly, and is beautiful in all of its seasons. One of the finest however, is that of early summer - an exaltation of wildflowers! Meet Elaine and Jay Abramowitz (278-8076) at the mouth of Big Cottonwood Canyon at 9:00 A.M.

GRANDVIEW PEAK VIA MUELLER PARK HIKE. Rated 10.9. This is another hike seldom done by the club. If you don't hike it this year, it may be several years before the club does it again. Grandview is the high peak at the head of City Creek Canyon, and to join J. Dewell (295-2754) for this adventure, please meet at the south end of the parking lot of the K-Mart at the Woods Cross Exit of I-15 at 8:00 A.M. The trip will not be fast paced because the leader is not capable of leading a 10.9 hike at a fast pace. The trip will adjourn at the best little road house on Highway 89 for hamburgers, steaks, etc.

SUNSET PEAK HIKE. Rated 4.9. You go up to Catherines Pass and then along a long, curving ridge to the southeast. From the top you can see Timp to the south, the Uintas to the east, and Lakes Catherine, Martha, and Mary hung in glistening steps below you. Meet Joe Gates (943-0957) at the mouth of Big Cottonwood Canyon at 9:00 A.M.

MAYBIRD LAKES HIKE. Rated 6.0. The Maybird Lakes are at the base of the Pfeifferhorn, and the rocky scree comes right down into the waters of two of them. These are small alpine lakes, redolent with the sharp, sweet smell of the high meadows which border them. Meet Floyd Mead (292-0284) at the mouth of Big Cottonwood Canyon at 9:00 A.M.

SPRING CHICKEN INN BIKE RIDE (MOD). This 35 mile ride is from Park City to Wanship for breakfast/brunch/lunch (your choice). The route will be via Browns Canyon, so be prepared for a fast descent going, and a testy climb on the return leg. (Brown's Canyon entails two climbs: the lower one is 506 feet over 3.3 miles, while the upper climb is 300 feet over 1.5 miles). Meet Elliott (968-7357) at the K-Mart/Regency to carpool at 9:00 AM, or at Park City High (1750 East Kearns Boulevard) in Park City at 10:00 AM. Helmets required.

Mon. June 18

VOLLEYBALL 6:30 in Fairmont Park. Easiest entry and parking is to turn west off 1100 East/Highland (they merge) onto Ashton Ave (2310 South) and go straight into the park. For information, call Doug at 269-1833.

- Tue. June 19 ALPINE CANYON BOATING WORK PARTY. Meet at the WMC Boat Storage Center at 6:30 pm at 4317 S. 300 W., # 8. Located just north of ZIM's for all who are going on the June 23-24 trip.
- TUESDAY NIGHT BIKE RIDE (NTD). City Creek Canyon. See write-up for June 5th.
- Wed. June 20 WEDNESDAY NIGHT BIKE RIDE (NTD) Millcreek Canyon. Meet leader Ceil Meade at 6:30, ex-Bagel Nosh parking lot in the Olympus Hills Mall. Helmets are required. For more information call Ceil at 572-2035.
- Thu. June 21 THURSDAY EVENING HIKE. Mill Creek Canyon. See "Thursday Evening Hike Information" on page 4.
- THURSDAY EVENING CLIMBING at the GATE BUTTRESS. See June 7 for details.
- Sat. June 23 TRAIL MAINTENANCE DAY. Help the Club and the Forest Service maintain our Wasatch hiking trails. We will meet at 9:00 A.M. at the mouth of Big Cottonwood Canyon to organize trail crews. A cookout at the Lodge will follow trail work. Call Chris Biltoft at 359-5645 for details.
- LODGE WORK PARTY. Come following the trail clean up day and help clean up the grounds around the Lodge and general "Spring cleaning" of the building interior.
- WELLSVILLE MT. BIKE RIDE (MOD). This 53 mile road ride circumnavigates the mountain located between Brigham City and Logan. We'll begin with a ride up Sardine Canyon and a tour thru the town of Mantua, then following a fast descent into Cache Valley, we'll stop for lunch at a country cafe in Wellsville. This ride features wonderful vistas of beautiful Cache and Bear River Valleys. Notwithstanding the climb up Sardine Canyon (1,425 feet over 7.3 miles), the terrain is easy flat to rolling. Meet Elliott (968-7357) to carpool at the Southeast corner of the State Capitol building at 8:00 AM, or at John Adams Park in Brigham City (1st North 5th East) at 9:15. Helmets required. Mountain bikes are not appropriate on this ride.
- POTLUCK DINNER AND DANCE AT THE LODGE. The Time Lords of Rock & Roll are back! Come dance to the classics of the 50's and 60's on Midsummer's Eve! Social hour at 6:30 P.M., potluck dinner at 7, dancing at 8. \$5 per person. We won't provide soft drinks, so bring your own beverage. Any questions? Call Marc at 355-3227.
- June 23-24 ALPINE (SNAKE RIVER) BOATING TRIP (Class II). Martin Gregory will
Sat.-Sun. lead this popular Club trip. Call him at 582-2403 to confirm your participation. \$25 deposit required.
- June 23-24 ESCALANTE CANYON - HARRIS WASH BACKPACK. This easier pack
Sat.-Sun. trip insures some varied and colorful scenery so don't forget your cameras. Our two leaders Louise Knauer and Janiece Pompa would like to leave from work on Friday and have a ten person limit. For more info and registration call Janiece at 485-3116.

Sun. June 24

BROADS FORK HIKE. Rated 4.6. Fer ignorant! Can you imagine the gall of the people who named this canyon! I mean men back in those days were real rude and crude. I apologize ladies, and assure you that we're working on renaming it; in the meantime, its a nice moderate hike. Meet Diane Little (263-2082) at 9:00 A.M. at the mouth of Big Cottonwood Canyon.

BEATOUT TURTLES ONLY HIKE. Rated 14. Have you decided that The Beatout is only for the muscle-bound, hard-chargers of the club? Charles Lesley will be leading this hike specifically for those of you who are not in that group! Of course it will be an all day epic, and you should be in reasonably good condition, but the pace will definitely be relaxed. Register with Charles Lesley, 364-2486.

PARK CITY OVERLOOK HIKE. Rated 3.5. Upper Millcreek is a quiet place with a character quite different from the rest of the Wasatch. There are big spacious meadows filled with Lupine and Stickseed, and at the top there is a splendid view of the other Red Pine Lake and the foothills of the Uintas. Meet your leader, Ann Pole (487-2412) at 9:00 A.M. at the Bagel Nosh in the Olympus Hills Shopping Center.

ALEXANDER BASIN HIKE. Rated 4.2. First the bad news: Despite the low rating, this is generally not considered to be a completely easy hike, as it's a somewhat declivitous trail. The good news is that your leader is one of the nicest people in the club - Karen Perkins. Meet her at 9:00 A.M. at the Bagel Nosh in the Olympus Hills Shopping Center. Her number is 272-2225.

PFEIFERHORN HIKE. Rated 9.9. Despite forgetting to list his Twin Peaks hike, (oh, mea culpa!), Peter Hansen has agreed to lead another hike for us. This too will be a hefty hike, with icy snow, and a bit of exposure. Peter (583-8249) requests that you bring an ice axe, and be at the mouth of Big Cottonwood Canyon at 8:30 A.M.

Mon. June 25

VOLLEYBALL 6:30 in Fairmont Park. Easiest entry and parking is to turn west off 1100 East/Highland (they merge) onto Ashton Ave (2310 South) and go straight into the park. For information, call Doug at 269-1833.

LOCHSA BOATING WORK PARTY. Meet at the WMC Boat Storage Center at 5:30 pm at 4317 S. 300 W., # 8. Located just north of ZIM's for all who are going on the June 27-29 trip.

Tue. June 26

MAIN SALMON BOATING WORK PARTY. Meet at the WMC Boat Storage Center at 5:30 pm at 4317 S. 300 W., # 8. Located just north of ZIM's for all who are going on the June 28-July 4 trip.

PARLEYS CANYON BIKE RIDE (NTD) Ride to Mountain Dell golf course for midweek exercise break. Meet Ceil Meade (572-2035) at 6:30 PM at Eastwood Elementary School, Wasatch Blvd & 33rd South.

June 27-29
Wed.-Fri.

LOCHSA RIVER BOATING TRIP (Class III-IV). Randy Klein (272-8059) will lead this exciting whitewater trip down the Lochsa River (Idaho). Will lead 3 different single-day trips. \$25 deposit required. We can meet up with the June 30 Payette trip afterwards.

Thu. June 28

THURSDAY EVENING HIKE. Big Cottonwood Canyon. See "Thursday Evening Hike Information" on page 4.

THURSDAY EVENING CLIMBING. Storm Mountain.

June 28-July 4
Thu.-Wed.

MAIN SALMON BOATING TRIP (Class III). Donna Kramer (272-0418) will coordinate this fun trip. \$25 deposit required. River Guide Needed.

June 29-July 4
Fri.-Wed.

YELLOWSTONE BICYCLE TRIP. We will again stay at Bob Wright's "rustic" cabin at Henry's Lake, Idaho, and do day rides in incomparable area. Planned are rides to Upper and Lower Yellowstone Falls, along the shores of picturesque Yellowstone Lake, swimming in the Firehole River, and riding the loop past Quake Lake, the Madison River, and Hebgen Lake. You may even be able to do a moose criterium. If you enjoy hiking and fishing, there is plenty of that available also. See the new growth after the recent fires. You can come for part or all of the time. Cost is minimal. Call Bob Wright, 1-649-4194 for additional information or to sign up. Car pooling will be arranged to the cabin.

Sat. June 30

MULE HOLLOW HIKE. Rated 2.9. During the spring run-off the stream flows over the trail in Mule Hollow, but by late June it is usually dry. The water makes for a somewhat rocky trail, but it isn't a long hike, and at the top you are rewarded with a magnificent view of the rugged north flank of Storm Mountain. Kathleen Romanofski, (467-9164), says that children, (with parents), are welcome on this hike. Meet at 9:00 A.M. at the mouth of Big Cottonwood Canyon.

CLAYTON PEAK (aka MT MAJESTIC) NEWCOMERS HIKE. Rated 5. This is a good solid intermediate hike, with a fine view. Clayton is separated from the rest of the Brighton ridge, so you have an expansive vista of the main cordillera off to the southwest. To the east, at the foot of the peak, are Bloods Lake, Silver Lake, and Lake Lackawaxen. Meet me, Jerry Hatch, (467-7186), at the mouth of Big Cottonwood Canyon at 9:00 A.M.

SUGARLOAF FROM ALBION BASIN HIKE. Rated 3.9. The big man with the big pack would like you to join him on his annual walk up to this rocky promontory high above Alta. There should be fine views of the Devil's Castle, and Pittsburg Lake in upper American Fork Canyon. Meet Randy Long (943-0244), at 9:00 A.M. at the mouth of Big Cottonwood Canyon.

LONE PEAK HIKE. Rated 13.3. For those of you who like to have lunch on a rock about the size of a dining table, with sheer drop-offs of hundreds of feet on all sides, have we got a hike for you! (The timid, the acrophobic, or the sensible need only go as far as the meadow). Meet Steve Carr (261-5787) at the mouth of Big Cottonwood Canyon at 6:30 A.M.

CITY OF THE ROCKS ROCK CLIMBING. The City offers a variety of short climbs on granite with perfect approaches. Belaying from the front bumper is possible. Only a few hours away in Southern Idaho, it's just the thing for early spring. Leader needed. Please call 363-9891 for more info or to volunteer.

- June 30-July 1
Sat.-Sun. **HENRY'S FORK IN THE UINTAS BACKPACK.** This should be great to get out into the high country so early in the season. Leader Ken Kelley has plans for possible day hikes and fishing. Don't forget Black Nats and Hairs Ears. For details call Ken at 942-7730.
- June 30-July 4
Sat.-Wed. **PAYETTE RIVER BOATING TRIP.** (Class II-IV). No leader for this one, we'll meet you at the Warm Springs Campground near Garden City, Idaho. Rafters welcome, but you'll have to organize your own crew. Call Jeff Barrell if you have any questions, or want to lead this trip.
- June 30-July 8
Sat.-Sun. **DEEP CREEK RANGE EXPLORATORY BACKPACK.** Ann and Mike Springfellow would like to get to know the Deep Creeks. The plan is to leave after work on Friday with other interested packers including with much welcome veterans of this not often enough explored treasure. For details, call 582-9436.
- Sun. July 1 **CECRET LAKE HIKE.** Rated 1.2. Bee Lufkin plans to make this an easy morning stroll, so come along! Meet Bee (583-8249) at the mouth of Big Cottonwood Canyon at 10:00 A.M.
- LAKE LILLIAN HIKE.** Rated 5.7. Lake Lillian? Actually we're just being sneaky; Lillian is Blanche's little sister, located a few hundred yards to the southwest. Leslie Woods, (484-2338), invites everyone going on the hike to a barbecue at Barb's afterwards. So if you're interested, bring something to grill, a side dish to share, plus your own beverages. Call Leslie for information on the hike and barbecue. The hike will start at 8:30 A.M. at the Hillside Plaza Shopping Center (7000 S. 2300 E.).
- FLAGSTAFF PEAK HIKE.** Rated 4.3. Chuck Gregg plans to bring his son on this hike, and he invites you to bring your teenager along with you. (Why are we accused of not having any family activities?) Be aware that this is a somewhat steep hike, but a lot of fun. Meet Chuck, (364-6342) at the mouth of Big Cottonwood Canyon at 9:30 A.M.
- UP NEFFS CANYON DOWN THAYNES HIKE.** Rated 7.3. The trail up Neffs follows along a steep surging stream, and up near the saddle there is a warm, drowsy meadow, which lies beneath exotic Japanese watercolor-like pinnacles. Meet Allen and Ilka Olsen (272-6305) at 8:00 A.M. at the Bagel Nosh in the Olympus Hills Shopping Center.
- SUNDAY SOCIAL** at Chrystal Sysak's. She's planning a German dinner and would appreciate an RSVP to get an idea of how many to be ready for. Call her at 943-0316 for more information. The cost will be \$5.00.
- Mon. July 2 **VOLLEYBALL** 6:30 in Fairmont Park. Easiest entry and parking is to turn west off 1100 East/Highland (they merge) onto Ashton Ave (2310 South) and go straight into the park. For information, call Doug at 269-1833.
- July 3-8
Tue.-Sun. **SOUTH SNAKE RANGE BACKPACK.** This will be very strenuous and incredibly scenic. Don Seely plans to visit Mts Lincoln, Washington, Pyramid, Baker, and Jefferson Davis with many options for side trips. The South Snake Range is just south of Great Basin National Park. There is a limit of 12 on this trip so don't wait too long. Call Don at 581-5688.

JUNE 1990 MEMBERSHIP LIST
pages 21-26, 28-37 (not printed)



WASATCH MOUNTAIN CLUB

Membership applicants must participate in at least two Club outdoor or service activities, verified by the signatures of approval from the activity leaders. Yearly dues are \$25.00 single, \$35.00 couple. A \$5.00 initiation/reinstatement fee is charged.

1990-1991 GOVERNING BOARD

President	John Veranth	278-5826
Secretary	Jim Elder	943-3321
Treasurer	Cynthia Anderson	359-8823
Membership	Julie Ann Jones	278-4753
Boating	Jeff Barrell	278-3510
Conservation	Janet Friend	268-4102
	Keith Johnson	268-2453
Entertainment	Marc Hutchison	355-3227
Hiking	Jerry Hatch	467-7186
	Gene Wooldridge	973-8073
Lodge	Vince Desimone	1-649-6805
	Kathy Klein (Rentals)	272-8059
Mountaineering	Tony Thompson	363-9891
Publications	Pat Beard	596-8099
Ski Touring	Norm Fish	964-6155
Information	Barbara Jacobsen	943-3715
	Aaron Jones	467-3532
COORDINATORS		
Bicycling	Rich Gregersen	467-6247
	Nance Randall	485-1483
Canoeing	Kathy Klein	272-8059
	Randy Klein	272-8059
Kayaking	Marlene Egger	277-2894
Sailing	Vince Desimone	1-649-6805
Rafting	Lidia DiLello	943-3321
	Jim Elder	943-3321
Volleyball	Doug Stewart	269-1833

TRUSTEES

Karin Caldwell	942-6065
Dale Green	277-6417
Milt Hollander	277-1416
Alexis Kelner	359-5387
O'Dell Peterson	Trustee Emeritus
Dale Green	Historian



KIRKHAM'S.

Your Only Store When You're Heading For the Great Outdoors.



Here's a sampling of the Spring and Summer items that we have available for you:

OUTDOOR CLOTHING

- The North Face
- Woolrich
- Patagonia
- Royal Robbins
- Columbia
- Gramicci
- Sierra Designs
- Big Dog
- Kokatat
- Marmot
- Moonstone

FOOTWEAR

- Asolo
- Vasque
- Merrell
- Fabiano
- Hi-Tec
- Danner
- Technica
- Nike
- Pivetta
- Joseph Seibel
- Koflach
- Teva
- Birkenstock
- Timberland

SUNGLASSES

- Ski Optics
- Vaurnet
- Style Eyes
- Jones
- Ziari

PACKS

- Dana Design
- Kelty
- Lowe
- North Face
- Camp Trails
- Jansport
- M.E.I.

TENTS

- Springbar®
- Eureka
- North Face/Windy Pass

SLEEPING BAGS

- Slumberjack
- Everest Elite
- Marmot
- North Face

Kirkham's Outdoor Products

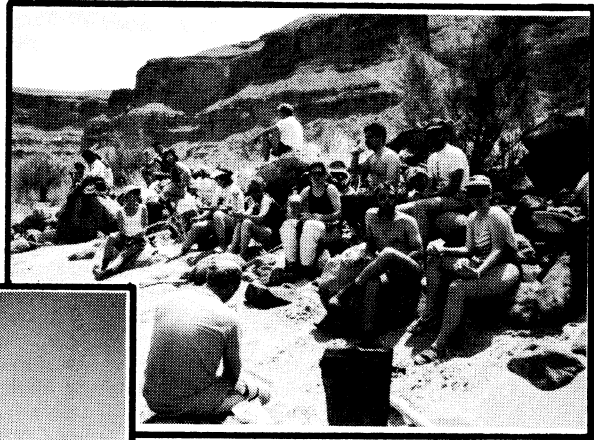
Manufacturers of quality products for the great outdoors.

• Daypacks • Fanny Packs • Tents • Gaitors • Luggage • Overmitts

All made right at our factory/store, so we're able to pass along factory direct pricing to you.



3125 So. State 486-4161 Mon.-Thurs.9:30-8:00, Fri. to 9:00, Sat. to 6:00



July 3-8
Tue.-Sun.

BEARTOOTH MOUNTAIN RANGE BACKPACK. The Beartooths are north of Yellowstone. Backpack in the Granite Peak Basin. Mark McKinzie (486-4986) will be leading this pristine adventure. There will be a 12 person limit so do not procrastinate.

Wed. July 4

GOBBLER'S KNOB VIA BOWMAN FORK HIKE. Rated 9. This is one of the classic hikes of the Wasatch. From Bowman Fork the trail climbs up to White Fir Pass and then around to Baker Spring. It then crosses the face of the Knob, and goes up the south flank of the mountain to the summit at 10,246 feet. Meet Duke Bush (466-1148) at the Bagel Nosh in the Olympus Hills Shopping Center at 9:00 A.M.

TWIN LAKES PASS HIKE. Rated 3.4. Eldon Madsen says that children accompanied by a responsible adult are welcome. (See - yet another family hike!) If you'd like a nice, relatively easy hike, with family and friends, join Eldon (485-7236) at 9:30 A.M. at the mouth of Big Cottonwood Canyon.

MINERAL FORK TO THE MINES HIKE. Rated 5-7, depending on how far up the hike goes. The stream banks in lower Mineral Fork are covered with thimbleberries and wild raspberries. The trail itself is verdant with tangled growths of chokecherries and ninebark. This would be a wonderful place to escape from the heat and noise of the Fourth. Meet Dennis Talboe (485-6023) at 9:00 A.M. at the mouth of Big Cottonwood Canyon.

LITTLE WATER PEAK HIKE. Rated 4.8. This is the peak above Dog Lake to the northeast. This is a quaking aspen hike. Its mood is gentle and sunlight dappled, the high canopy of leaves in eternal motion. Sometimes, in the afternoon winds, you can hear the soft creaking of straining wood from the older trees. Meet Duane Call (485-2980) at 9:00 A.M. at the Bagel Nosh in the Olympus Hills Shopping Center.

July 4-8
Wed.-Sun.

JARBIDGE WILDERNESS BACKPACK. We will try again this year without the 5,000 Rainbow Coalition folks overrunning the place! The plan is to start in noon Wed from Camp Draw 12 miles south of Jarbidge and come out there noon Sunday. Camp Draw takes us up the North Mary's River, over Cougar Pass and down Cougar Creek. We will loop up the East Fork of the Jarbidge River on our way out. Side trips to Cougar Peak and maybe Matterhorn Peak from Cougar Pass and out toward God's Pocket Peak are planned. Call Fred Zoerner at 702-786-2165 or Mitzi Hultin at 702-747-5507 for registration and rendezvous info. This will be a joint trip with the Reno area Sierra Club.

Thu. July 5

THURSDAY EVENING HIKE. Mill Creek Canyon. This will be a moonlight hike. Bring snacks, your favorite beverage, a jacket, and a flashlight. Plan to be back at the cars by 10:30. Meet at 6:45 P.M. and leave at 7:00 P.M. Otherwise, the "Thursday Evening Hike Information" on page 4 is correct.

Fri. July 6

REYNOLDS PEAK VIA BUTLER FORK MOONLIGHT HIKE. Rated 5.2. Under the full moon the aspen covered hills, meadows, and pine groves are tinted from darkest black to lightest gray. The wilderness has a vastly different appearance at night. You are much more conscious of sounds and scents, and you have a heightened awareness of the presence of wildlife. Meet Gene Wooldridge (973-8073) at 7:30 P.M. at the mouth of Big Cottonwood Canyon.

Sat. July 7

REYNOLDS PEAK VIA BIGWATER HIKE. Jesse Hutt says that "the variation in terrain makes this trail especially pleasing on a July morning." It is a very gentle, mostly shaded trail, which winds its way through ravines filled with aspen and spruce. Jesse (521-5723), will meet you at the Bagel Nosh in the Olympus Hills Shopping Center at 9:00 A.M.

MT NEBO SOUTH PEAK VIA ANDREWS RIDGE HIKE. Rated 11.7. Nebo is the tallest mountain in the Wasatch, and from the top you can see for hundreds of miles to the west, north, and south. Also on top is a rusty sign erected by the WMC in 1922. This hike is one of only three hikes, regularly scheduled by the club, which has an elevation gain of over 5,000 feet. Due to the distance from SLC, the car pooling starts at 6:00 A.M. Call Cassie Badowsky (278-5153 evenings) to register.

LAKE LACKAWAXEN HIKE. Rated 2.5. Last year when I first saw this lake, I was surprised that the club didn't visit it more often. At lunch we sat on a boulder which jutted out into the lake and watched a sizeable colony of green newts lounging in the shallow water. I was fascinated! Meet Mary Jean Cherenzia (582-2602) at 9:30 A.M. at the mouth of Big Cottonwood Canyon.

MAYBIRD LAKES HIKE. Rated 6.0. Randy Long writes that in the Maybird cirque "there are impressive auto-sized rocks which extend all the way up the canyon to the Pfeiferhorn ridge." It's a dramatic sight and Randy would like you to see it. Join Randy (943-0244) at 9:30 A.M. at the mouth of Big Cottonwood Canyon.

July 7-8
Sat.-Sun.

OAKLEY RODEO BIKE WEEKEND (MOD). This ride, an overnigher sponsored by the Bonneville Bicycle Touring Club, will include a sag wagon, western barbecue supper on Saturday night, rodeo ticket, dance, fireworks after the rodeo, breakfast on Sunday (cooked by the town) and a commemorative patch. The ride will start from Salt Lake City (45 miles one way) or from Park City (20 miles one way), your choice. Total cost, \$21 each and a limit of 200 riders! Pre-registration is required. Call John Peterson (277-8817) for more details.

Sun. July 8

MT SUPERIOR VIA CARDIFF PASS HIKE. Rated 14. I am acrophobic, so I usually stay away from those hikes which involve exposure, but once, long ago, for some strange reason, I climbed this mountain. I was terrified out of my mind, of course, but had I not been, I think I would have found this an enjoyable hike...my point being - we need a leader (preferably not acrophobic). Please call Jerry Hatch at 467-7186, if you think that you might be a worthy candidate for this position. The hike will meet at 9:00 A.M. at the mouth of Big Cottonwood Canyon.

MT EVERGREEN HIKE. Rated 2.8. It is about this time of year that summer finally gets serious up in the Brighton area. The last of the snow recedes, and bright yellow glacier lilies and other high alpine blooms take its place. Brent Greenhalgh (583-1831) will set a leisurely pace. Please meet him at 9:30 A.M. at the mouth of Big Cottonwood Canyon.

DAYS FORK EARLYBIRD HIKE. Rated 4.6. When the tops of the pines are touched with the glow of morning, and Reed and Benson Ridge stands bright and distinct above you, then you'll know why you bothered to get up

- so early. Thomas Berg (272-4743) asks that you bring a breakfast snack and meet him at the mouth of Big Cottonwood Canyon at 8:00 A.M.
- Sun. July 8 BROADS FORK HIKE. Rated 4.6. Doug Stark (277-8538) would like to make this a leisurely paced hike. You can stop at the bridge, watch the clear water frenziedly tumble over the big cobbles, and listen to one of nature's most euphonic sounds. Meet Doug at 9:00 A.M. at the mouth of Big Cottonwood Canyon.
- Mon. July 9 VOLLEYBALL 6:30 in Fairmont Park. Easiest entry and parking is to turn west off 1100 East/Highland (they merge) onto Ashton Ave (2310 South) and go straight into the park. For information, call Doug at 269-1833.
- Tue. July 10 MAIN SALMON BOATING WORK PARTY. Meet at Jeff & Candy's place at 5429 South, Woodcrest Drive (about 17th East) at 6:00 pm for all who are going on the July 16-22 trip.
- July 10-15
Tue.-Sun. HELL'S CANYON ADVANCED BOATING TRIP (Class IV). Call Ed Christy (968-9665) for information about this scenic Idaho river trip.
- Wed. July 11 ALPINE CANYON BOATING WORK PARTY. Meet at the WMC Boat Storage Center at 5:30 pm at 4317 S. 300 W., # 8. Located just north of ZIM's for all who are going on the July 14-15 trip.
- WEDNESDAY NIGHT BIKE RIDE (NTD). Emigration Canyon. Meet Ceil Meade (572-2035) across the street from the Hogle Zoo parking lot (do not park in the Zoo lot) at 6:30 PM. This 17 mile round trip ride climbs to the top of Little Mountain.
- Thu. July 12 THURSDAY EVENING HIKE. Big Cottonwood Canyon. See "Thursday Evening Hike Information" on page 4.
- Sat. July 14 BREAKFAST CLUB BIKE RIDE (MOD). Beat the truckers to breakfast at the Cafe near the top of Parleys Canyon. It's all downhill back home. Meet Kathy Hoenig and Ellen Jenkins at Eastwood Elementary School (Wasatch Blvd & 33rd South) at 8:00 AM. For more information call Kathy at 486-8525.
- MT NAOMI HIKE. Rated 6.0. I don't know much about this hike, since I've been meaning to go on it for years, but...I haven't. I'm going to call Fred Duvall, (1-782-5565) and find out more about it. I'll let you know more in the July *Rambler*.
- RED PINE HIKE. Rated 5.3. The prettiest lake in the Wasatch, and a party thrown in for good measure! Barbara Jacobsen, (943-3715) invites those of you going on this hike to stop by afterwards for cool wet refreshments. Meet Barb at 9:00 A.M. at the mouth of Big Cottonwood Canyon.
- CASCADE PEAK HIKE. Exploratory. Howard Wilkerson, one of the great adventurers of the hiking committee, plans to do a little exploring on this Utah county peak. This is your chance to see a little bit of the country between Timpanogos and Nebo. Call Howard at 277-1510 for details.

Sat. July 14

CASSIE'S BEATOUT HIKE: LAKE HARDY TO RED PINE. If you have been avoiding the usual beatout because of that portion of upper Bells that eats hikers for breakfast, this one is for you. With spectacular views and the usual possibility of mountain goat sightings, this pristine area is a rare treasure. The rating is about 13.5. Leader Cassie Badowsky would like to start at 7:30 A.M. Call in advance to register at 278-5153.

LAMBS CANYON TO MILLCREEK HIKE. Rating approx 3-5. The club often hikes to the Lambs Canyon saddle from Elbow Fork, but very rarely from the Lambs Canyon side. Once again, the hiking committee's leader of intrepid but easy hikes, Mr. Duane Call, will be your guide. Meet Duane (485-2980) at 9:00 A.M. at the Bagel Nosh in the Olympus Hills Shopping Center.

THE COFFEEHOUSE returns to the WMC lodge. Call Guy Benson for details at 359-6028, or see next month's *Rambler*.

July 14-15
Sat.-Sun.

ALPINE CANYON (SNAKE RIVER) BEGINNING BOATING TRIP (Class II). The Club has volunteers willing to teach rowing and canoeing skills to beginners and kayaking to novice level Club members. This trip is not designed for kayakers who have never been on a river. Call Jeff Barrell (278-3510) to reserve a spot or if you are willing to lead the trip.

July 14-15
Sat.-Sun.

ERICKSON BASIN IN THE UINTAS BACKPACK. Chris Venizelos has a busy time planned starting with a Saturday hike up Bald Mountain, some fishing, and some other aquatic activities. Sounds like a great weekend. For the skinny on this one call Chris at 355-7236.

Sun. July 15

STANSBURY RIDGE RUN HIKE. Rated 12. Donn Seeley envisioned this as sort of a distant beatout (if the unique is what you seek - see Seeley). This should be a real adventure, and keep in mind that the 12 rating is approximate, since this is definitely an exploratory hike. Call Donn at 581-5668 to register.

LAKE KATHERINE HIKE. Rated 3.0. Lake Katherine is a lovely little glacier lake, located within easy hiking distance of the Brighton parking lot. Your leader, Cherry Wong (272-4353) says that "tried and true, lets get an early start." Meet her at 8:30 A.M. at the mouth of Big Cottonwood Canyon.

MT BALDY HIKE. Rated 4.1. Here's another hike we don't do very often. I suspect that we climb the other Mt. Baldy (in the Uintas) far more often than we climb this one, so...why not try something different? Meet Karen Perkins (272-2225) at 9:00 A.M. at the mouth of Big Cottonwood Canyon.

NORTH WILLOW LAKE IN THE STANSBURYS HIKE. Rated 4.5. Once again...ahem...we need a leader. North Willow Lake is located almost immediately to the north of South Willow Lake, (logically) but few people know where it is. If one of you Tooeleites, (Tooeleers?) or Stansbury Parkers could help us out it would be greatly appreciated. Please call me at 467-7186. (Tooeleanians?) The hike will meet at the truck stop at the Tooele exit of I-80 at 9:00 A.M. (Tooelepolitans?)

- Sun. July 15 SUNDAY SOCIAL. Join Tom and Maurita Stevens at their home for a Mexican feast. See next month's *Rambler* for details or call 272-8532.
- July 16-22
Mon.-Sun. MAIN SALMON BOATING TRIP (Class III). Jeff Barrell (278-3510) will lead this trip through central Idaho down "The River of No Return." The Main should still have plenty of water left. \$45.00 Deposit Required early. See Work Party on July 10.
- July 20-22
Fri.-Sun. BRIAN HEAD MOUNTAIN BIKE WEEKEND. Ride the scenic roads and trails of the high Dixie National Forest at Brian Head and Cedar Breaks National Monument. Elevation 7,000 - 11,000 in beautiful redrock and forest country just four hours from Salt Lake City. Guided and self-guided rides for all ability levels. Car camping plus rustic or deluxe lodging at super rates. Register now with Ken Kraus at 363-4186. Limit 20 persons. Details in July *Rambler*.
- July 20-24
Fri.-Tue. WIND RIVER BACKPACK. The glorious, wild country of western Wyoming appeals to Eldon Madsen, and he invites you to join him on a foray into some of the best of it. Call Eldon at 485-7236 to register.
- Sun. July 22 LITTLE WATER TRAIL TO THE BEAVER POND KIDS HIKE. Join Wick Miller and his trusty scouts Michael and Tiger (ages 4 and 5) who will set pace and blaze trail. The destination could be further if there is enough interest. This is as close to a guaranteed fun hike as you can get. Meet at the Bagel Nosh in the Olympus Hills Shopping Center at 9:30 A.M. Call Wick at 1-649-1790.
- Sat. July 28 RIDGE HIKE FROM THE TOP OF MILLCREEK CANYON TO DESOLATION LAKE AND BACK VIA DOG LAKE. Long, but fairly easy, est. rating 7.0. This is the more challenging way to get to Deso. It is also an interesting hike: on the east side of the ridge there are huge slabs of stone whose cracks are filled with indian paintbrush. Meet Susan Allen and Bob Myers (485-9209) at 9:00 A.M. at the Bagel Nosh in the Olympus Hills Shopping Center.
- Sat. July 28 OLD TIMER'S PARTY AT THE LODGE. Karin Caldwell will host this club tradition. Details in next month's *Rambler*.
- Sat. Aug 4 DESOLATION TRAIL HIKE. Rated substantial. Bob Myers wants to do the whole thing, (i.e. this will not be a good hike for wimps; but then few of Bob's are). The hike will start at the Guardsman's Pass Road and end (considerably later) at the Mill Creek Inn. Please call 485-9209 to register.

FUTURE OUT OF TOWN ACTIVITIES

- July ??-?? **ARKANSAS INTERMEDIATE TO ADVANCED BOATING TRIP** (Class II-IV). Randy Klein will lead this trip to the Arkansas River in Colorado. Date is uncertain at this time due to uncertain water levels. Call Randy at 272-8059 to participate or if you have any questions.
- July 21-Aug 4 **PACIFIC CREST TRAIL BACKPACK**. Kira Kilmer will lead 2 four-day high alpine trips on the well-marked Pacific Crest trail in the Ross Lake area of northern Washington state. Great views west to the high Cascades. No technical climbing. Should be sunny, days in mid-60's. About 8 miles per day with packs. Call 364-5044 to register for planning meetings. Hikers may get together to drive up for just one of the loops, (one week with drive time).
- August 8-12 **LEWIS LAKE TO SHOSHONE BACKPACK**. Leader Kyle Williams (298-2184). More info in future *Ramblers*.
- August 15-18 **WIND RIVER EXPLORATORY BACKPACK**. Leader Debby Mills. More info in future *Ramblers*.
- Sept 12-16 **CANOE PACK TRIP IN THE SELWAY BITTERROOTS**. Leader Mike Budig. More info in future *Ramblers*.

BOATING TRIPS PLANNED FOR THIS YEAR AT A GLANCE

LAUNCH DATE	RIVER (Segment)	CLASS	LEADER	PHONE
June 2	Desolation Canyon	III	Janet Embry	322-4326
June 4	Main Salmon	III	Joan Hadly	531-0727
June 9	River Rescue Course		Tim Poole	547-9400
June 16	Alpine Canyon	II	Larry Stewart	277-2894
June 23	Alpine Canyon	II	Martin Gregory	582-2403
June 27	Lochsa	II-IV	Randy Klein	485-3360
June 28	Main Salmon	III	Donna Kramer	272-0418
June 30	Payette	II-IV	LEADER NEEDED	
July ?	Arkansas	II-IV	Randy Klein	485-3360
July 7	Ruby Horsethief	I	LEADER NEEDED	
July 11	Hell's Canyon	IV	Patty Giffin	277-1168
July 14	Alpine Beginner	II	Jeff Barrell	278-3510
July 16	Main Salmon	III	Jeff Barrell	278-3510
Aug 4	Alpine Family	II	Nancy Inaba	968-9665
Aug 11	Westwater Canyon	III	Liza Poole	547-9400
Aug 13	Westwater Canyon	III	Larry Hardebeck	467-7120
Aug 19	Westwater Canyon	III	Laura Layton	533-0241
Aug 24	Westwater Canyon	III	LEADER NEEDED	
Sept 02	Westwater Canyon	III	Craig Homer	968-1195
Sept 08	Westwater Canyon	III	Jim Brown	359-0754
Sept 15	Westwater Canyon	III	Craig Sturm	272-0828
Sept 23	Westwater Canyon	III	LEADER NEEDED	
Sept 29	Westwater Canyon	III	Marlene Egger	277-2894

We need a leader for any trip listed as "LEADER NEEDED". If you are willing to lead one of them, or if you have any schedule changes or additions, call Carl Cook at 485-4586 as soon as you can.

TRIP TALK

FRANCIS PEAK AREA

February 24, 1990
by Kenny Strong

We had a very good day, the temp was excellent. We had people of different ability levels, and the pace was a bit fast for the people with less ability.

I think this would be an excellent trip to add to the events and I think I will offer to do it again next year, and increase the level to take advantage of the terrain.

The people that participated in this event were: Kenny Strong, leader, Karen Strong, Roy Perkin, Claudia Trotter, Norm Fish, Carolyn Clark, Bill McWhorter, Maxine McWhorter, Marilyn Smith, Bill Loggins, and Kristie Price.

MOUNT SUPERIOR

July 29, 1989
by Howard Wilkerson

A group photograph, taken by Ruth Thomas, appeared in the March 1990 *Rambler*, page 21 (I am second from right, back row, standing next to Bruce Coulter, leader). The hike was a memorable one for all of us, and deserves a somewhat belated trip report.

In the basin below Cardiff pass, we met Ruth Thomas going down as we were going up. Ruth is the widow of the Sam Thomas, who passed away recently. After a delightful conversation, including Sam's many hikes to Mount Superior and the boiling/brewing time of tea at this altitude, we continued on our separate ways.

The ridge to the peak is exposed in a few spots, and Bruce Coulter competently provided a belay with a climbing rope for those who desired it. (Note: belay procedures require training, and otherwise should not be used). As a result, a couple of members of the group stated that they otherwise would not have had the pleasure of reaching one of the Wasatch's finest peaks.

As we descended into Cardiff pass, we saw a mountain goat scramble up the cliffs opposite us, without a belay.

As we wandered back to the cars, feeling the usual fatigue and mild dehydration, there, to our astonishment, was Ruth Thomas again, with ice cold juices in the trunk of her car. After reveling in the delicious drinks, we picked up where our conversation left off earlier in the day.

In terms of group cohesion and camaraderie, the hike was one of the most enjoyable of the year, with thanks to Bruce (leader), and to Ruth Thomas.

KING'S PEAK SKI TOUR

March 31, 1990
by Steve Swanson

The annual King's Peak ski tour took place March 31st, on a beautiful, cloudless, spring day. After the usual painful 5:30 a.m. start, an enthusiastic group of ski-tourers proceeded to various destinations. The beautiful high meadows of the north slopes of the Uintas provided opportunity for some to enjoy lunch and beautiful scenery.

Others proceeded on to the rugged surroundings of Gunsight Pass, which provides a sensible objective for the trip (if about a 30 mile round trip can be considered sensible!).

Still others, however, were determined to reach the summit of Utah's tallest peak. Guy and Glead Toombes kicked steps in the new snow all the way to the summit, letting the rest of us follow in comparative ease.

A short but pleasant stay on the top let us enjoy the views, while considering how much easier the trip out would be. Jim Byrne and Jay Dewell had the luxury of extending their stay for a few days, while camping in the basin. After some adventures with snow

bridges over the creek, the last persons out reached the cars about an hour after dark.

Those on the trip were Dick Baldwin, Jim Byrne, Bruce Coulter, Larry Coulter, Jay Dewell, Bob Irvine, Kira Kilmer, Bill McWhorter, Bob Mitchell, Ann Page, Ernie Page, Sheryl Smith, Larry Swanson, Glead Toombes, Guy Toombes, Monte Young, and trip leader Steve Swanson.

GOURMET SKI TOUR

April 8, 1990
by Gale Dick

Can someone please solve this age-old problem? Most of us have to plan mountain outings in advance for a specified date and time. Only the very young, the daringly irresponsible, or the retired have the luxury of rushing off when the snow has just fallen or the morning has just broken on what promises to be a long stretch of beautiful weather. The rest of us plan ahead and then await the whims of the weather gods. What we need is a sure-fire way of scheduling the Gourmet Ski Tour for a certified beautiful day. April 8 was not such a day.

Steady drizzles were not, however, enough to dampen the enthusiasm and bonnehommie of the sturdy indomitables of the WMC. A quick change of plans took us to the shelter at the Spruces. Em Hall fetched firewood so that we could have a cheery fire in the fireplace and a group of 16 of us settled down to a fine gourmet picnic and a celebration of the ski season just ending. We toasted "the best ski day of the year, the worst ski day, and the dreams of powder in the year to come". We also reminisced about gourmet tours on stormy days in the past. New frontiers of tackiness and shockingly bad taste in getups were splendidly in evidence.

The menu included: strawberry short cake, pain et vin, french bread, Cantonese asparagus tips, homemade chokecherry wine, vegetable crepes, wind pudding with air sauce (an old New England favorite), pickled herring and blue cheese, chocolate chip scottish shortbread,

Eastside bagels with strawberry cream cheese, a box of chocolates, cheese cake, select exotic teas, cafe espresso, and chocolate supreme (thanks Vince for carrying the stove), and monkey food. Thanks everybody for the wonderful goodies and special thanks to Allan Gavere for the freshly cut daffodils.

Participants: Lee and Judy Taylor, Michael Budig, Wick Miller, Mike Treshow, Kira Kilmer, Clint Lewis, Bill Wallace, Martha Veranth, Donna Kramer, Kristie Price, Allan Gavere, Vince DeSimone, Monty Young, Emily Hall, and Gakle Dick.

See you all next April!!

FIRST HIKE OF THE SEASON

April 7, 1990
by Ken Rockwell

Or a tie for that distinction, at least, went to the City Creek Twin Peaks hike on April 7th, led by Richard Zeamer. After a sunny week, Salt Lake County awoke to ominous gray clouds that started to shed a few drops even as the hikers gathered in the parking lot of 11th Avenue Park in the Avenues. Only 2 members and 3 recruits showed up by 9:05. Joining Richard and Frank Atwood were Richard's friends James Kordig and Josephine Diwer, and new kid in town, Ken Rockwell, who is a sucker for writing articles like this.

We carpoled to a trailhead at the top of the subdivision and started the climb to the Peaks. Slight sprinkles came and went, and we wondered if the clouds had scared people away. On the other hand, they might think this short morning hike was too wimpy and went on the other hike scheduled for that day. But whoever's the wimp, Frank observed they have good company - Sylvester "Rambo" Stallone spent the Vietnam War teaching at a girls school in Switzerland.

Richard chatted a bit about natural history and the age of rocks we saw along the way, which led to discussion of the Big Bang theory and recent evidence that this theory may be wrong.

The higher you climb, the more you see and the more expansive your thoughts. Another comment brought up that provides perspective was that the smelting stack at the north toe of the Oquirrh Range is about as high as the Empire State Building. The Oquirrhs dwarf the stack, and other mountains dwarf the Oquirrhs.

We saw others out on the trails across the canyons and hollows from us - including two women whose trail would soon meet ours. "Oh good! Some non-clubbies available to take a group picture!" No such luck - they were "clubbies": Membership Director Julie Jones and her friend Annette Tanner had gotten to the checkpoint late and proceeded to another trailhead - and reached the ridge ahead of us!

Wind was heavier at the peak tops. As we descended from North Peak into the saddle and up again to South Peak, Frank encouraged us on by saying there were oranges awaiting us. "Okay Moses, lead us to the Promised Land!" We had too little faith, for indeed we found refreshing oranges there - in Frank's backpack! And despite the overcast, the view was still We went down the side route which Julie and Annette had used, observing the start of the wildflower display. Some upcoming hikes in the foothills ought to provide even more vivid displays as spring progresses. (Note the Georges Hollow hike on April 29).

WELCOME BACK TO THURSDAY EVENING HIKE

(well... sort of)

by NOT-ON-YOUR-LIFE-WOULD-I-
ADMIT-TO-THIS

(but I'm a devoted fan of Mr. Green's)

THE QUESTION for the evening was, "Where's Dale?" So we went on the first Thursday Evening Hike without him. Nice hike - up to the top of Van Cott Peak, but no Dale.

Ah, but wait... there he is standing at the bottom waiting for us in the closing darkness. "Where you been Dale?" The burning question is answered - "Waiting at the spot for NEXT Thursday's hike." Oh, oops. We were glad he was OK, but...izzzz he really? The other scary part here is we found out later that our beloved Hiking Director, Jerry Hatch, was waiting with Dale! One thing we're sure of, they'll be in the right spot for next week's hike. Hell getting old, ain't it?

RIKEN WHITEWATER RAFT SALES & RENTALS

- Perception Kayaks Sales
- Life Jackets
- Carlisle Oars
- Rowing Frames
- Ammo Boxes
- Wet Suits
- Dry Suits
- Padding Jackets
- Gott Coolers
- River Bags
- And Lots More

We carry a full line of Whitewater accessories

SIDSPORTS

SKI AND RAFT SPECIALIST

3025 EAST 3300 SOUTH

SALT LAKE CITY, UTAH 84109



JACOB CITY HIKE

April 28, 1990
by Hank Winawer

We've been variously described as mountain men, survivalists, overly dedicated hikers and explorers, or just plain wacko for venturing out to a ghost town in the southwest part of the Oquirrh Range on a day that the weatherman had predicted would be pelted with rain, snow, sleet, wind, and very cold temperatures. Nonetheless, six intrepid adventurers and Monty's part wolf, part dog Star took off under cloudy skies for the heavily listing "old Hotel" at Jacob City. We were anxious to see the "Tilton Hilton" just once more before its angle of repose became nil. Unfortunately, the weight of winter snows and the pull of gravity had taken their toll. Jacob's ladder is now destined to be recycled by Mother Earth.

After devouring lunch just inside the entrance to the SS Mine, we ventured deep inside along the narrow gauge railroad (ore car) tracks. Thankfully, we didn't encounter any wild critters - that is until we emerged to find Star very nervously awaiting the return of her master. We felt no fear, since this beast was only a pack of one and we had her outnumbered. (Actually, Star is quite wary, but not aggressive).

It's anyone's guess when this mine was first blasted and chiseled out of solid rock, but according to Jim Mallon, this area was first mined for gold around 1865.

Descending the trail, we tested Bill Galeazzi's metal detector on the numerous artifacts scattered around an old miner's cabin. I wouldn't say that the batteries on this device were weak, but it had considerable difficulty "detecting" a 4 x 6 foot metal bed spring lying in plain view. I assume that a more sensitive metal detector would have allowed us to uncover a veritable treasure of \$10 and \$20 gold pieces. (If that doesn't entice you couch potatoes next year, nothing will).

Except for a brief sprinkle, the weather held out during our hike. However, after we were snug in Bill's truck and headed for home, the storm front hit with everything the meteorologist had anticipated.

Hot coffee and apple pie at Penney's Cafe (somewhere between Ophir and Tooele) topped off the Jacob City jaunt for Monty Young and Star, Bob Clay, historian Jim Mallon, Bill Galeazzi, scribe Hank Winawer and our undaunted bellwether Jerry Hatch. Aaaaaah... another great day!

West Canyon in the Stansbury Range

April 21, 1990

Donn Seeley

I know, I know — this hike was *scheduled* to go the Cedar Range, but there were some weasel words in the *Rambler* listing that said I might choose to lead it somewhere else, and, well, I did. I exercised a leader's (eccentric) prerogative on a day in April when the temperature was 12 degrees warmer than usual and ticks were in season in the Cedars.

West Canyon is on the east (yes, *east*) side of the Stansbury Range, about 45 miles' drive west of Salt Lake City. It is almost directly west of the town of Grantsville in Tooele Valley, and is in the northern part of the range, an area that is seldom visited for some reason. True, the northern mountains are not as grand as Deseret Peak in the south (11,031 feet) but they still have a lot of charm and character, with huge slabs of quartzite towering over dense forests of Douglas firs, with lacy white cornices of snow on pink and orange ridges, with violet and yellow and blue spring flowers and green spring grass. We saw deer enjoying fresh spring air, and a pair of sleek-looking horses watched us from a slope covered with luscious spring growth. The mountain mahogany and sage were in flower and the stream-side plants were putting forth their first leaves; only the aspens in the upper valleys were bare and cold and white. Did I mention that it was spring?

The trip out from Salt Lake was not as uneventful as a trip leader would like, since we lost one carload of hikers before we left town and we were greeted in Grantsville by a ferocious thunderstorm that cleared the streets and cleaned my car. Fortunately we met the missing car at about the same time that the sun found us, and we took off toward the mountains and the blue sky. After driving up the alluvial fan on a bumpy dirt road, we parked at the mouth of the canyon near a spot where the Forest Service had (ineffectually) bulldozed a barrier; when we finished applying sunscreen and tightening boots, we started hiking. We followed the remnants of the track up the canyon, the main branch gradually curving south as the grade gradually steepened. The north-facing slopes featured fir trees at an unusually low altitude, mixed with the junipers and some very robust mountain mahogany. Perhaps this canyon was never logged, or perhaps was only logged long ago? The track was washed out badly in a couple places, and we could see where vehicles had forced their way across the slopes to get around the worst terrain. The track ended at a wide spot in a grove of trees just before the canyon narrowed. We left behind an old stove and a fire ring and began climbing on a trail of very variable quality that took us in and out of thick

forest and soft patches of late season snow. When we emerged onto a sagey meadow we could see an easy route up to the ridge.

According to the USGS map, the unnamed peak that looms over Grantsville is a respectable 9,143 feet high, so I figured that we could work our way up to a low spot on the ridge and run along it for half a mile to the summit. The pass we were aiming for had an elevation of about 8,700 feet, so most of the effort was spent scrambling up the rocky slope. We slipped and slid in a few places, but it was generally very pleasant and as we rose in elevation we got an excellent view out over the Tooele Valley toward the Oquirrh Mountains. I think we could all have lived with a little less attention from the numerous mosquitoes, but they were probably preferable to ticks and most of us promptly applied jungle juice. When we finally attained the ridgeline, we found a wonderful view down the west side into Skull Valley. The canyon that came up the west side was framed on north and south by craggy cliffs, forming a sort of funnel full of trees. After a pause to collect the group, we strolled north over quartzite slabs toward the peak.

In spite of its imposing appearance, the crest required little ingenuity and presented no significant exposure. After a few hundred yards the ridge broadened into rolling sagebrush and boulders and it became an easy walk. The top was fairly gentle and we got a spectacular 360-degree view of the West Desert and the Salt Lake. To the southeast we could see Mt Nebo and the East Tintic Mountains; dimly in the west were the Deep Creek Mountains and Pilot Peak, with the long easy crest of the Cedar Range in the foreground. We could see white clouds reflected in the still waters of the Great Salt Lake, and gray clouds drifting over peaks in the Oquirrhs. Deseret Peak in the south was a white-painted block of stone, frosty and formidable. Our little summit had a number of flat places to sit and enjoy this scenery, if you were careful to avoid the cactus, and so we sat and avoided and ate lunch.

It was too bad that some of that scenery included black clouds advancing from the south. After a while we noticed that curtains of rain or snow were starting to hide Deseret Peak, so we stuffed lunch leftovers in our packs and high-tailed it. When we were most of the way down from the ridge we discovered that the rain was going to pass us by, at least temporarily, and we slowed down. When we got back to the abandoned stove at the end of the road, we noticed all the empty cans left behind in the fire pit next to it and our Earth Day ire came to the fore. We began filling a couple trash bags with aluminum cans, and as we walked down the road picking through the bushes we kept finding more and more non-degradable trash and the bags got heavier and heavier. There were pieces off of

a car; there was a broken aluminum lawn chair; there were cans and bottles galore, and plastic jugs and candy wrappers and cigarette packs and bits of twine. To our surprise, we turned up an unopened can of beer, a faded container of Budweiser, red on one side and yellow on the other. Someone opened it and it seems that aging while buried in mud doesn't affect the good old 'beechwood aged' taste.

On the way out we stopped for malts in Grantsville at a drive-in that featured roller-skating waitresses. It was a long hard day and who knows what the waitresses made of our sweaty group? I do know that I was bizarrely grateful that my Volkswagen quelled until this afternoon its desire to open a crack in a cylinder head. A tow from a 7-11 on 33rd South was a lot less difficult than a tow from West Canyon would have been...

Thanks to everyone who came along and made it such a fun day: Scott Endicott, Uli Hegewald, Bonnie Kaye, Mary Ann Losee, Ton Netelbeek, David Parry and Joan Proctor (who forgot to sign the release form!). Oh, and thanks too to Charles Lesley for personally delivering the release form mere seconds before I drove away from home that morning.

GRAY CANYON TRIP #2

May 12-13, 1990

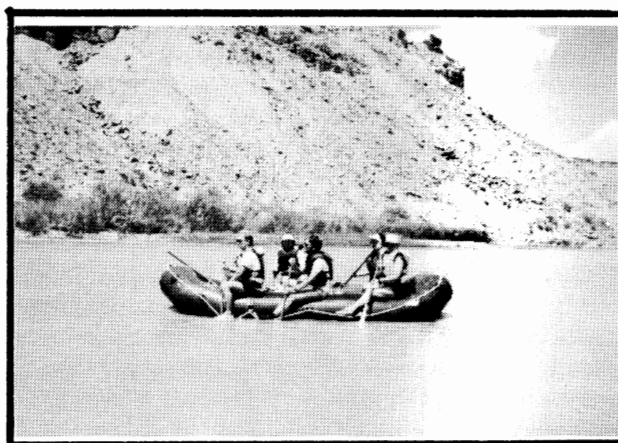
by Phyllis A. Papan

If Friday night was any indication as to what the weekend was going to be like, we were in trouble. Janice put her keys down and then couldn't find them. The van pulled up with the wrong trailer and Jeff Barrell, our fearless leader, had to go and get the right size. As a result, we got a late start. Half-way through the trip down, the skies were threatening to rain down on us, and eventually they did thanks to Kyle's jinx. It was windy, very windy and raining by the time we got to Swazey Beach. You should have seen us putting up tents in the cold and rain. It was a joke!

Much to our amazement, Saturday and Sunday turned out to be gorgeous days with lots of sunshine. We encountered a little wind every now and then, but not much. This was the second of the beginners classes for the year. Jeff is an excellent boater and did a wonderful job of teaching us to be good, safety-conscious rafters. Jeff signed up six new members to the WMC on our trip.

Saturday we put in at Nefertiti Rapids. Thanks to the two new fire-engine red self-bailers, the maneuverability was excellent. A couple of us had noticed that the water level was a little lower than it had been last year at that same time, but we still had good conditions. Janice, Brian, Roy and Claudia were in kayaks keeping us company. Janice, being the expert that she is, helped and mothered us so we wouldn't get into trouble. It was a good safe trip, and we only lost one person out of the rafts. Eleanor and Paul managed the oar rig and did a good job of carrying around our food and libations.

Saturday we stopped to eat at Sand Knoll Rapids. There were six brave souls that rode the rapids without the raft: they were Brian, Bryce, Jeff, Sondra, Mark and Rip. We all watched as they were consumed by the waves.



Photos by Phyllis Papan

That night we had happy hour, munched on goodies, and played volley ball until someone found some glass in the sand. What a dinner we had! We ate lots of spaghetti, garlic bread, salad and strawberry twinkie shortcake. What a feast. After dinner we made a fire and sat around telling stories and dirty jokes.

Sunday was equally as nice of a day, and we were all anxious to get back out in the water. But before we did, we filled up on hot cakes, fresh fruit with yogurt, cowboy coffee and juice. Thanks goes to the breakfast crew for a great treat.

This time we put in at Butler Rapids. An inflatable canoe was at our disposal if we wanted to use it. Sondra (She is from

Australia and has only been in Utah for two weeks.) and Angela volunteered to take their lives into their own hands. (Saturday while eating lunch we must have watched at least six canoes tip over at Sand Knoll Rapids.) We had a lot of fun with the water fights, picture taking and just taking it easy and enjoying the scenery. There were a few more of us crazy people that took on the rapids without the aid of a raft. It was a bit chilly, but nothing we couldn't handle. Janice was there with her expertise to help out with her kayak when one of us couldn't get back to shore. On our way back to camp we followed the newlyweds in their kayaks side by side. How sweet! It was a beautiful day and I can't think of a better way to spend Mother's Day.

We appreciated Paul being our chauffeur both to Green River and back to Salt Lake. On our way back, we stopped at Ray's for a beer and hamburger. The place was packed, so we just quenched our thirst. We tried a Chinese restaurant, but they too, were full up. So as a last resort, we ended up at Wendy's. We were all starving after the wonderful weekend.

The burning question that I have for all is, How do you spell release? The boys to the left and the girls to the right, of course.

Participants: Jeff Barrell, Janice Huber, Barbara Green, Pat Fields, Kathy "Kat" Reel, Rip Johnson, Karen Deibert, Bryce Nickish, Mark Wheeler, Tony Hepworth, Paul Hill, Eleanor Goodall, Brian Sanders, Roy Perkins, Claudia Trotter, Carol Milliken, Sondra Fraser, Angela Hensley, and Phyllis Papan.

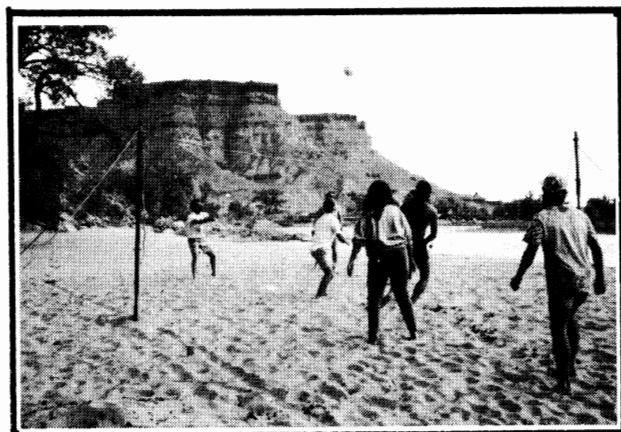


Photo by Phyllis Papan



HOUNDSTOOTH HIKE

(a.k.a. HANKSTOOTH)

Sunday, April 22, 1990

(a.k.a. Earth Day)

by Leslie Mullins

Photos by Phyllis Papan

This hike of Hank's had everything: beautiful views, steepness, wind, steepness, rain, steepness, rock climbing, steepness, and just for good measure, a little more STEEPNESS. Could we see about getting this re-rated to about a 5.5 and what was that elevation gain anyway? Whew! But it was lovely and we all had a good time.

This hike starts in a residential area off to the left of the road to Little Cottonwood Canyon and rises through the scattered scrub oak to a wide ridge where some snow still hid about. Once above the ridge, and looking back, we could see the distinct difference between north and south facing slopes; the south facing slope was deep white with bare aspen trunks. The dark grey clouds shrouded the valley but not enough to block out the Oquirrh, bright with sunlight. We didn't spend much time at the top because it looked like we were going to get hit a second time with rain but, turns out, we beat the weather down.

Except for being a major knee-killer, this hike is exceptionally nice with its fine views and wildflowers this time of year and would be wonderful in the fall when the leaves are doing their thing. Thanks to Hank "we loved your shirt" Winawer for leading us and for trying to

warn us that this hike is not for those who are significantly out of shape. We are believers.

Participants: Janet Chatwin, Jan Coskey, Cindy Cromer, Elise Erles, Floyd Durrant, Frank Atwood, Wick Miller, Ken Kelley, Pat Kottcamp, Norm Fish, R. Doug Bebout, Vall Neff, Mike O'Dell, Lyn Nall, Ken Elkins, Steve Larson, Sarah Marsden, Lynette Brooks, Judith Lakomy, Kelly Peters, Jane Eisenberg, Shaun Buttars, Rhett Brooks, Leslie Mullins, Phyllis Papan, Lee Moss, Debbie Mayer, Christine Allred, and Val Anderson.



NEEDLES BACKPACK

Easter, April 12-15, 1990
by Chuck Reichmuth

After a minor onslaught of phone calls, including a couple of wag and sniff interrogations, a contingent of intrepid souls was established for the big trip south to the Needles District of Canyonlands National Park. The final count? Four! Chuck and Judy got an early start on Thursday which enabled them to do some minor "exploring" before camping out that night. Mike was committed to seeing the Jazz play before leaving, so he and Joan arrived during the wee hours of the morning. Never-the-less, the four rendezvoused as planned Friday morning, and departed a few minutes later for a "long" 1 1/2 hour backpack to the campsite off of Big Spring Canyon, with one of the few reliable springs in the park.

By the way, water levels and sources appear to be in very poor shape for this time of the year. For example, Lost Canyon's stream is bone dry, and the reservoir opposite Dugout Ranch is nearly empty.

After setting up camp and collecting water, we set off for a modest 8 1/2 mile hike, backtracking to Big Spring Canyon, then up that canyon, looping around to return via Elephant Canyon. The weather was perfect; the contrast of red rock and fresh green growth was spectacular as usual; and the routing of the trails the usual fun experience. Happy hour commenced upon return.

Saturday, we set out for Chesler Park, and on to Virginia Park, which is one of the few remaining places in the nation left untrampled by man or domestic beast, with all its native vegetation, and cryptogamic soil up to eight inches deep. We chose to view the park from a rock ledge above, during lunch, rather than violate its integrity. After returning via a labyrinth of passage ways, we set off for a quick tour of the Joint Trail, with the inevitable quip of: "What's someone like you doing in a joint like this?" After doubling back to Chesler Park, three of us opted to return to the campsite, making it a comfortable 16 mile hike for the day. Mike chose to go on to Druid Arch, and managed to cover 23 miles before returning.

We broke camp Sunday morning with the intent of returning to the trailhead, and then hiking Lost Canyon, and possibly Squaw Canyon; however, upon arrival at the trailhead, three of us were more inclined to head for Ray's Tavern in Green River for some of its famous food. Joan, who was still ready for more hiking, got out-voted, so off we went. We found that the menu had been expanded to include chicken teriyaki and taco salad at modest prices. Also noted was a sign "offering" cheese sandwiches at \$15.00 and peanut butter sandwiches at \$25.00. Then on for an early return to SLC. Participants were Judy Broxton, Mike Budig, Joan Proctor, and Chuck Reichmuth.

CLASSIFIED ADS

AD POLICY

Members may place classified ads for used sports equipment free of charge. Other classified ads require a \$5.00 donation to the WMC for up to 20 words with \$.20 per word over 20. Words of 2 letters or less will not count as a word.

NOTICE!

Send your ad (with a check enclosed if it is not a used sports equipment ad) before the 13th of the month to Sue DeVall, 11730 South 700 West, Sandy UT 84070 or call Sue at 572-3294 for information.

The Rambler cannot accept any ad that is inconsistent with the purposes of the WMC, or that offends the sensibilities of club members.

FOR RENT

RIVER EQUIPMENT FOR RENT. Call 584-8300 (9-5) or 359-0220 after 5. Ask for Bruce Beck. (7/90)

ROOMMATE WANTED

ROOMMATE WANTED. Bright Avenues apartment. \$220/month. Share electricity, cable, phone. Call Jan 364-4292

USED EQUIPMENT

SALE: North Face "Black Magic" frame pack \$70. Sierra Designs "Divine Light" 1 person Gortex tent \$100. Dana Designs "Bridger" Internal frame pack. North Face "Crysallis" down sleeping bag. Ask for Greg 484-3134

DRY SUIT CKS Front entry dry suit. Excellent condition. Large, blue, \$95. Gary 255-2295.

SOLO WHITEWATER CANOE. Mohawk Scamp 14 foot. \$450. 255-2295.

1987 SPECIALIZED ROCKHOPPER 21" frame. Call Tricia 533-9055.

CHOUINARD TELESCOPING POLES. I'd like to buy one or sell one. Paul 571-6750.

DANCE

WMC Lodge Party

TIME LORDS OF
ROCK AND ROLL

Present

Music of the 50's & 60's

Saturday, June 23

Social Hour	6:30	
PER LUCK DINNER	7:00	\$5 per person
DANCING	8:00	

ELMER BOYD

1921-1990

by Alexis Kelner

Elmer Boyd, a member of the Wasatch Mountain Club since the 1960's, passed away on March 27 after a long illness. He was 69 at the time of his death.

Elmer Boyd was raised in the midwest. During World War II he rejected an occupational deferment and enlisted in the U.S. Army Air Corps. He completed many combat missions over Germany as pilot/aircraft commander of a B-17 Flying Fortress.

Sometime after the war Elmer moved to Utah, where he became active in the Wasatch Mountain Club. Elmer rarely turned down an opportunity to lead a trip or to participate in a club outing. He introduced many club members to the joy of trilobite hunting in the west desert; he participated in numerous work parties at the lodge and along the trails of the Wasatch.

Elmer's gentle and thoughtful presence will be missed by all who knew him.



702 THIRD AVE
533-8671

MOUNTAIN BIKING? WE DO IT!!

IT'S THAT SIMPLE. IF YOU'RE LOOKING FOR A MOUNTAIN BIKE AND PLAN ON RIDING IT IN THE DIRT, WE'RE THE PEOPLE TO SEE. WITH LINES LIKE **PAT CHANCE, FISHER, MARIN, IBIS, BIANCHI, MOUNTAIN GOAT, MERLIN, BONTRAGER, KONA AND HARO** ALL UNDER ONE ROOF, YOU CAN SPEND MORE TIME TEST RIDING AND LESS TIME DRIVING FROM SHOP TO SHOP.

KNOWLEDGE AND PRICES?

FIND SOMEONE WHO RIDES OR RACES A MOUNTAIN BIKE AND **ASK THEM ABOUT US.**

PARTS AND ACCESSORIES?

WE'VE GOT LOTS OF THEM. NOT JUST BREAD AND BUTTER SHIMANO, BUT TRICK STUFF LIKE COOK BROS., BULLSBYE, WTB, SALSA, EXOTIC WHEELOODS AND A WALL FULL OF KNOBBY TIRES.

REPAIRS? WE DO THEM RIGHT!!

AND USUALLY OVERNIGHT. NEED A WHEEL BUILT TODAY OR A QUICK TUNE BEFORE A TRIP TO THE DESERT? **GIVE US A CALL.** WE DON'T HIRE SALESMEN, **EVERYONE WHO WORKS HERE IS A MECHANIC.** **WE LOVE BIKES AND THE PEOPLE WHO RIDE THEM.**

IT'S THAT SIMPLE.

1990-1991 GOVERNING BOARD

President	John Veranth	278-5826
Secretary	Jim Elder	943-3321
Treasurer	Cynthia Anderson	359-8823
Membership	Julie Ann Jones	278-4753
Boating	Jeff Barrell	278-3510
Conservation	Janet Friend	268-4102
	Keith Johnson	268-2453
Entertainment	Marc Hutchison	355-3227
Hiking	Jerry Hatch	467-7186
	Gene Wooldridge	973-8073
Lodge	Vince Desimone	1-649-6805
	Kathy Klein (Rentals)	272-8059
Mountaineering	Tony Thompson	363-9891
Publications	Pat Beard	596-8099
Ski Touring	Norm Fish	964-6155
Information	Barbara Jacobsen	943-3715
	Aaron Jones	467-3532
COORDINATORS		
Bicycling	Rich Gregersen	467-6247
	Nance Randall	485-1483
Canoeing	Kathy Klein	272-8059
	Randy Klein	485-3360
Kayaking	Marlene Egger	277-2894
Sailing	Vince Desimone	1-649-6805
Rafting	Lidia DiLello	943-3321
	Jim Elder	943-3321
Volleyball	Doug Stewart	269-1833

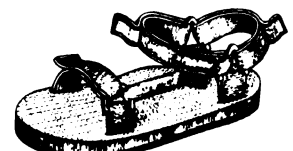
TRUSTEES

Karin Caldwell	942-6065
Dale Green	277-6417
Milt Hollander	277-1416
Alexis Kelner	359-5387
O'Dell Peterson	Trustee Emeritus
Dale Green	Historian

SALT LAKE CITY, UTAH WASATCH TOURING



TREAT YOUR FEET THIS SUMMER



MERRELL

Vasque

ASOLO

TEVA SPORT SANDALS

THE RIGHT FOOTWEAR AND MORE

702 East 100 South • Salt Lake City, Utah 84102 • (801) 359-9361

WASATCH MOUNTAIN CLUB

APPLICATION FOR NEW MEMBERS/REINSTATEMENT FOR PREVIOUS MEMBERS RAMBLER SUBSCRIPTION QUALIFICATION FORM **DO NOT USE THIS FORM TO RENEW YOUR MEMBERSHIP**

Please read carefully and fill out completely. Your signature is required.

APPLICANT'S NAMES: _____

ADDRESS: _____ CITY _____ ST _____ ZIP _____

HOME PHONE _____ DAY PHONE _____ BIRTH DATE _____

I hereby apply for ☐ NEW MEMBERSHIP ☐ STUDENT
☐ REINSTATEMENT ☐ SINGLE membership in the WMC
☐ COUPLE

I ☐ DO wish to receive the *Rambler* (the WMC publication). Subscription price
I ☐ DO NOT is not deductible from the dues.

Enclosed is \$ _____ for one year's (Mar 1 19__ to Feb 28 19__) dues and application fee.
*** Make checks payable to Wasatch Mountain Club (CHECKS ONLY) ***

Remit: \$20.00 for student membership (\$15.00 dues and \$5.00 application fee)
\$30.00 for single membership (\$25.00 dues and \$5.00 application fee)
\$40.00 for couple membership (\$35.00 dues and \$5.00 application fee)
(NOTE: These rates include the \$12.00 for the *Rambler* subscription)

YOU MUST COMPLETE THE FOLLOWING FOR MEMBERSHIP CONSIDERATION
THE ACTIVITY DATES MUST HAVE BEEN WITHIN ONE YEAR OF THIS APPLICATION

qualifying activity	date	signature of recommending leader
1. _____	_____	_____
2. _____	_____	_____

I agree to abide by all the rules and regulations of the WMC. I am 18 years of age or older.

I am willing to serve the WMC in the following areas: (please check)

<input type="checkbox"/> Service Project	<input type="checkbox"/> Lodge work	<input type="checkbox"/> Conservation	<input type="checkbox"/> Rambler	<input type="checkbox"/> Thurs Night Hikes
<input type="checkbox"/> Hike Leader	<input type="checkbox"/> Boat Leader	<input type="checkbox"/> Ski Leader	<input type="checkbox"/> Social Assist	

I found out about the WMC from _____

APPLICANT'S SIGNATURE: _____

MAIL APPLICATION AND CHECK TO: MEMBERSHIP DIRECTOR
WASATCH MOUNTAIN CLUB
888 SOUTH 200 EAST, SUITE 111
SALT LAKE CITY, UTAH, 84111

LEAVE BLANK

Receipt #: _____	Date Received: _____	Amount Recv'd: _____
(or check #)		(less application fee)
Board Approval Date _____		(Rev 7/88 Pub 6/90)

IN CASE OF EMERGENCY PLEASE NOTIFY
THE SALT LAKE COUNTY
SHERIFF'S OFFICE AT:

535-5855

OR THE APPROPRIATE EMERGENCY
AGENCY IN YOUR LOCATION.

Avalanche
Forecast
Recordings

Logan	752-4146
Moab	259-7660
Ogden	621-2362
Provo	374-9770
Park City	649-2250
Salt Lake	364-1581

WASATCH MOUNTAIN CLUB
888 SOUTH 200 EAST, SUITE 111
SALT LAKE CITY, UT 84111

6/90

SECOND CLASS
POSTAGE PAID
SALT LAKE CITY, UT
NO. 053410