

# The Rambler

WASATCH MOUNTAIN CLUB

MAY



VOLUME 67, NUMBER 5. MAY 1990

# The Rambler

## STAFF:

EDITOR: Pat Beard

ADVERTISING: Jill Pointer

CLASSIFIED ADS: Sue deVall

MAILING: John Battalio, Rose Lowrey, Rose Novak

PRODUCTION: Pat Beard, Geoff Freethey, Sandy Freethey, Magdaline Quinlin

SKY CALENDAR: Ben Everitt

TYPING COORDINATOR: David Vickery

TYPISTS: Diane Little, Phyllis Papan, Clari Powers

THE RAMBLER (USPS 053-410) is published monthly by the WASATCH MOUNTAIN CLUB, Inc., 888 South 200 East, Suite 111, Salt Lake City, UT 84111. Telephone 363-7150. Subscription rates of \$12.00 per year are paid for by membership dues only. Second-class Postage Paid at Salt Lake City, UT.

POSTMASTER: Send address changes to THE RAMBLER Membership Director, 888 South 200 East, Suite 111, Salt Lake City UT, 84111. CHANGE OF ADDRESS: This publication is not forwarded by the Post Office. Change of address should be submitted in writing to the Membership Director, 888 South 200 East, Suite 111, Salt Lake City, Utah, 84111. All correspondence regarding the mailing of THE RAMBLER should be directed to the Membership Director at that address. Allow 45 days for address changes.

The right is reserved to edit all contributions and advertisements and to reject those that may harm the sensibilities of WMC members or defame the WMC.

Copyright 1990, Wasatch Mountain Club

## RAMBLER INFORMATION

**IF YOU MOVED:** Please notify the WMC Membership Director, 888 South 200 East Suite 111, SLC UT 84111, of your new address.

**IF YOU DID NOT RECEIVE YOUR RAMBLER:** Contact the Membership Director to make sure that your address is in the Club computer correctly.

**IF YOU WANT TO SUBMIT AN ARTICLE:** Articles, preferably typed double spaced, must be received by 6:00 pm on the 15th of the month preceding publication. Mail or deliver to the WMC office or to the Editor. Include your name and phone number on all submissions.

**IF YOU WANT TO SUBMIT A PHOTO:** We welcome photos of all kinds: black & white prints, color prints, and slides. Please include captions describing when & where the photo was taken, and the names of the people in it (if you know). We will return photos if you ask us to.

**DEADLINE:** Submissions to THE RAMBLER must be received by 6:00 pm on the 15th of the month preceding the publication. Mail or deliver to THE RAMBLER office. Include your name and phone number on all submissions.

## THE RAMBLER

THE RAMBLER, the official publication of the Wasatch Mountain Club is published monthly by and for its members. Persons wishing to become members may receive THE RAMBLER for two months by writing the Membership Director, 888 South 200 East, Suite 111, Salt Lake City, UT, 84111 and enclosing \$3.00. Checks are to be made payable to the Wasatch Mountain Club. There is a \$10 charge for returned checks.

## TABLE OF CONTENTS

Events At A Glance	4
Activities Schedule	5
Conservation Notes	21
Boating	22
1990 Boat Trips	23
Mountaineering	25
Ski Touring Director	26
Trip Talk	27
Sky Calendar	28
Classified Ads	30

Cover photo by Chuck Kinney.  
Story on page 27.

## WMC PURPOSE

(Article II of the WMC Constitution)

The purpose shall be to promote the physical and spiritual well being of its members and others by outdoor activities; to unite the energy, interests and knowledge of students, explorers and lovers of the mountains, deserts and rivers of Utah; to collect and disseminate information regarding the Rocky Mountains in behalf of science, literature and art; to explore and picture the scenic wonders of this and surrounding states; to foster awareness of scenic beauties; and to encourage preservation of our natural areas including their plant, animal and bird life.

# KIRKHAM'S.

## Your Only Store When You're Heading For the Great Outdoors.



Here's a sampling of the Spring and Summer items that we have available for you:

### OUTDOOR CLOTHING

- The North Face
- Woolrich
- Patagonia
- Royal Robbins
- Columbia
- Gramicci
- Sierra Designs
- Big Dog
- Kokatat
- Marmot
- Moonstone

### FOOTWEAR

- Asolo
- Vasque
- Merrell
- Fabiano
- Hi-Tec
- Danner
- Technica
- Nike
- Pivetta
- Joseph Seibel
- Koflach
- Teva
- Birkenstock
- Timberland

### SUNGLASSES

- Ski Optics
- Vaurnet
- Style Eyes
- Jones
- Ziari

### PACKS

- Dana Design
- Kelty
- Lowe
- North Face
- Camp Trails
- Jansport
- M.E.I.

### TENTS

- Springbar®
- Eureka
- North Face/Windy Pass

### SLEEPING BAGS

- Slumberjack
- Everest Elite
- Marmot
- North Face

### Kirkham's Outdoor Products

Manufacturers of quality products for the great outdoors.

• Daypacks • Fanny Packs • Tents • Gaitors • Luggage • Overmitts  
All made right at our factory/store, so we're able to pass along factory direct pricing to you.



3125 So. State 486-4161 Mon.-Thurs.9:30-8:00, Fri. to 9:00, Sat. to 6:00

# EVENTS AT A GLANCE

## May

- 5 Robber's Roost
- 11 The Barracks, Zion

## May

- 5 East Canyon
- 6 Heber Valley
- 7 City Creek Canyon
- 8 Planning Meeting
- 9 Millcreek Canyon
- 12 Alpine Loop
- 12 Park West
- 13 Trapper's Loop
- 13 Farmington
- 14 Parleys Canyon
- 16 Emigration Canyon
- 18 Sea to Sea Meeting

## May

- 1 Gray Canyon Wk Pty
- 5 Gray Canyon #1
- 5 Beginner Kayak Trip
- 8 Gray Canyon Wk Pty
- 12 Gray Canyon #2
- 14 Yampa Wk Pty
- 16 Leader's Meeting
- 17 San Juan Wk Pty
- 17 Yampa
- 21 San Juan Wk Pty
- 22 Middle Fk Wk Pty

## May

- 5 Henry Mountains
- 11 Arches
- 19 Arches
- 19 Moonshine Wash

## May

- 3 Storm Mountain
- 5 Beginner's Course
- 10 Storm Mountain
- 13 Mt Raymond
- 10 Storm Mountain
- 17 Storm Mountain
- 20 Mt Superior

## May

- 3 Foothills hike
- 5 Lakeside Mountains
- 5 Salt Lake Overlook
- 5 Grandeur Peak
- 5 Stansbury Island
- 6 Mt Olympus
- 6 City Creek Twins
- 6 Lookout Peak
- 10 Foothills hike
- 12 Church Fork Peak
- 12 Salt Lake Overlook
- 12 Dry Hollow
- 13 Lake Mountains
- 13 Mt. Aire
- 13 Storm Mountain
- 13 Elbow Fork
- 17 Big Cottonwood
- 19 Elbow Fork
- 19 Lake Blanche
- 19 Mt Ben Lomond
- 19 Reynolds Peak
- 20 Lewis Peak
- 20 Deseret Peak
- 20 Circle All Peak
- 20 Broads Fork
- 24 Mill Creek

## May

## May

## BACKPACKS

## BIKING

- 19 Goshen Valley
- 19 Citibank Century
- 20 Sanpete Tour
- 21 City Creek Canyon
- 23 Parleys Canyon
- 26 Purple Turtle

## BOATING

- 23 San Juan #1
- 24 San Juan #2
- 28 Salmon
- 29 Desolation Wk Pty
- 30 Main Salmon Wk Pty

## CAR CAMPS

- 25 Shellcreek Range

## CLIMBING

- 24 Storm Mountain
- 26 Tanners Traverse
- 31 Storm Mountain

## HIKES

- 26 Beartrap Fork
- 26 Gobblers Knob
- 26 Grandeur Peak
- 26 Greens Basin
- 27 Mule Hollow
- 27 Mt Olympus
- 27 Mineral Fork
- 28 Mt Aire
- 28 Kessler Peak
- 28 White Pine Lake
- 31 Big Cottonwood

## LODGE SOCIALS

## VOLLEYBALL

(Monday Evenings, 6:30 at Highland High 5/7, 5/14, 5/21, Fairmont Park 5/28, 6/4, 6/11)

## June

- 10 Bookcliffs

## June

- 2 Kamas Valley
- 5 City Creek Canyon
- 6 Emigration Canyon
- 19 City Creek Canyon
- 20 Millcreek Canyon
- 29 Yellowstone

## June

- 2 Desolation Canyon
- 4 Main Salmon
- 9 Rescue Course
- 12 Alpine Wk Pty
- 16 Alpine
- 19 Alpine Wk Pty

## June

- 3 Thunder Mt

## June

- 3 Thunder Mt

## June

- 2 White Fir Pass
- 2 Days Fork
- 2 Thaynes Peak
- 2 Mt Raymond
- 3 Cardiff Pass
- 3 Flagstaff Peak
- 3 Willow Lake
- 3 Wildcat Ridge
- 3 Dog Lake
- 7 Mill Creek
- 8 Grandeur Peak
- 9 Terraces
- 9 South Willow Lake
- 9 Salt Lake Overlook
- 9 The Beatout Hike
- 10 Reynolds Peak
- 10 Gobblers Knob
- 10 Red Pine Lake
- 14 Big Cottonwood
- 16 Flower Hike
- 16 Lake Blanche
- 16 Box Elder Peak
- 17 Toll Canyon
- 17 Greens Basin
- 17 Grandview Peak
- 17 Sunset Peak
- 17 Maybird Lakes

## June

## June

- 16 Potluck

## PROSPECTIVE MEMBERS

- 1) Thursday Evening Hikes are for members only. However, prospective members may attend if the hike is their second qualifying activity for membership and they submit their dues check and application form to the leader before the hike.
- 2) Boating trips are for members. However, prospective members may attend a weekend trip if they use the trip as their qualifying activity (each day counts as one activity.)
- 3) A trip leader may choose to limit a trip to members, especially if there is limited space.

## WMC HIKES:

The hike rating indicates the difficulty of the hike. Hikes rated under 5 are easy, 5-8 are intermediate, above 8 are difficult. A hike may be more difficult than the rating would suggest. Watch for the terms "exposure", "rock scrambling", "bush whacking", and "steep". If you have any questions about a particular hike, feel free to call the leader ahead of time. Please come to the hike with proper equipment: adequate clothing, footwear, food, water, and any special equipment required for that hike. You must sign the liability release form to participate in any hike, and you are expected to stay with the group during the hike.

## WMC BIKE RIDES:

Rides are rated Not Too Difficult (NTD), Moderate (MOD), or Most Difficult (MSD). NTD rides will generally be less than 30 miles. MOD rides will be 30 to 50 hilly or up to 60 flat miles. MSD rides will be over 50 hilly or 60 flat miles. On all but newcomer rides, riders must bring their own water, food, tire repair tools, extra tubes, repair knowledge, sunscreen, and money. Consider wearing protective gear. Helmets may be required on some rides.

## THURSDAY EVENING HIKE INFORMATION:

These hikes are for members only except prospective members may use them as the second and final qualifying activity for membership provided their dues check and application are submitted to the leader prior to the hike. Meet at 6:30 pm: all hikes leave the meeting place at 6:45 pm PROMPT! All participants must sign the liability release form. Hikes are never cancelled for any reason including bad weather, so wear appropriate clothing. Boots will be required if the trail is in mud or snow. No dogs. Hikes in Mill Creek Canyon meet in Olympus Hills parking lot at 3900 Wasatch Blvd. just south of the defunct Bagel Nosh. Hikes in Big Cottonwood meet at the Storm Mountain Quartzites geology sign, 2.9 miles up the canyon (rh side) from the stoplight. Leader: Dale Green.

# CLUB ACTIVITIES

Only activities approved by the appropriate WMC Director can be listed in the Club Activities section of the *Rambler*. Send your proposed activity, for approval, to the hiking, rafting, skiing, etc. director for inclusion in their activity schedule. Those activities sent directly to the *Rambler*, without approval, will not be published.

- Tue. May 1      GRAY CANYON BOATING WORK PARTY, # 1. Meet at the WMC Boat Storage Center at 5:30 pm at 4317 S. 300 W., # 8. Located just north of ZIM's for all who are going on the May 5-6 trip.
- Thu. May 3      THURSDAY EVENING HIKE. Foothills hike. Meet in the parking lot just north of the Fort Douglas Cemetery. Drive east on Wakara Way (600 South) from Foothill Blvd. to 391 Chipeta Way. See "Thursday Evening Hike Information" on page 4.
- EVENING CLIMBING AT STORM MOUNTAIN. Drive 3.3 miles up Big Cottonwood Canyon to Storm Mountain Picnic Ground. Don't be afraid to approach the questionable looking group of characters loitering around the boulder in the lower parking lot. They're most likely the climbers. Make your climbing intentions known and you'll probably find a partner. Delectable burgers for only a nominal charge, provided of course people volunteer to cook them! Please call Tony at 363-9891 to sign up.
- May 5-6      GRAY CANYON BOATING TRIP, # 1. Raft an easy class II section of the  
Sat.-Sun.      Green River and camp among some of the finest Winnebagos in Southern Utah (actually the river is the attraction)! This is a great beginning trip or warm-up trip. We expect a good mix of beginners and experienced boaters. Call Jim Elder (943-3321) to save your spot. \$25.00 deposit required.
- May 5-6      BEGINNER KAYAK TRIP. This trip is designed to help first time or  
Sat.-Sun.      beginning kayakers. Experienced kayakers are also welcome to come and float with the others and help the newcomers prove their skills before run-off. The group will be camping and cooking with the rafters, so be sure to attend the coordination meeting on May 1st at 5:30. To reserve your place call Jim Elder (943-3321) for details. Send \$25.00 deposit to Jim at 3182 E. Sagebrush Circle, SLC, UT 84121.
- May 5-6      HENRY MOUNTAINS - LITTLE ROCKIES EXPLORATORY CAR CAMP.  
Sat.-Sun.      Once again this will be a joint WMC/Utah Wilderness Association trip. For reservations call Howard Wilkerson 277-1510.
- May 5-7      ROBBERS ROOST (THE EASY WAY) BACKPACK. A newly rediscovered  
Sat.-Mon.      route into the heart of the canyon permits a three mile hike to base camp. From there we will take day hikes into three branches. Medium clearance four-wheel-drive vehicles are needed for this trip. Options for two and four days are feasible. Call Chuck Ranney 583-1092 to register.
- Sat. May 5      BEGINNER'S CLIMBING COURSE. Snow Session. This will be an early one to catch that low altitude snow in its cold hard higher-altitude condition in the morning. We'll meet in the canyon at 7:30 A.M. to learn safety techniques

on a snow field before the sun softens the snow to useless mush. Lunch at the car, then belay practice and an optional climb in the afternoon.

Sat. May 5

**LAKESIDE MOUNTAINS HIKE.** Exploratory. They have long stood bright and beckoning in the westering sun, and now you have a chance to visit them. Russell Wilhelmsen (583-2306) will be your leader and guide. Meet him at the Texaco station at the Tooele exit of I-80 at 9:00 A.M.

**SALT LAKE OVERLOOK HIKE.** Rated 3.0. This is one of the most gradual trails in the Wasatch; hence a wonderful beginners, or beginning hike. Meet Joan Thalman (968-6302 H, 538-6108 W) at 10:00 A.M. at the Bagel Nosh in the Olympus Hills Shopping Center.

**GRANDEUR PEAK VIA CHURCH FORK HIKE.** Rated 5.7. Gene Wooldridge, besides being hiking co-director, leads the wonderful Wednesday Evening Hikes in the summer. A leisurely paced hike, and good company are guaranteed. Meet Gene (973-8073) at the Bagel Nosh in the Olympus Hills Shopping Center at 9:00 A.M.

**STANSBURY ISLAND HIKE.** Rated under 5.6, no trail. George Swanson (466-3003), wants to go to the south peak on this hike. Sounds fun. Meet him at 8:00 A.M. at the parking lot at Simpson Avenue (just north of I-80 and 1300 East).

**EAST CANYON BIKE RIDE. (MOD).** A moderate and enjoyable ride via Big Mountain, before the road is open to vehicular traffic. Meet Kermit Earle (268-2199) on the north side of the Hogle Zoo Parking lot at 9:00 to carpool to starting point. Bring lunch or buy at East Canyon Resort.

Sun. May 6

**MT OLYMPUS HIKE.** Rated 8.3. Time for this great old WMC favorite! Ah the joys of Blister Hill, and the final little bit of rock scrambling! I can practically hear the murmur of the pines on the saddle, and smell the wet needles. Join Jim Smith (943-6004), at 8:30 A.M. at the Bagel Nosh in the Olympus Hills Shopping Center.

**CITY CREEK TWIN PEAKS HIKE.** Rated 2. This is the easiest Twin Peaks that the club does; it is also an interesting view of the Salt Lake Valley. Meet Carol Beasley (484-6617), at 10:00 A.M. at the upper parking lot (N.E. corner) of the University Hospital.

**LOOKOUT PEAK HIKE.** (Rated 7.5) It has been nearly two years since the fire, and most of the undergrowth has grown back, but up on the saddle above Killyon Canyon there are several acres of stark, blackened pine; this is a fine hike to observe nature's recovery. On top there are good views of the upper end of City Creek Canyon, and Mt Grandview. Meet David Parry (254-6532) at the Hogle Zoo parking lot at 9:00 A.M.

**HEBER VALLEY BIKE RIDE (NTD).** This 36 mile ride is a casually paced tour of picturesque Heber Valley. We'll cycle through Daniel, Charleston and Midway, stopping for lunch at the Pizza Hut in Heber. The terrain is easy flat to rolling. Meet Elliott (968-7357) at the K-Mart/Regency, 9:00 AM to carpool, or Midway Elementary School in Midway (200 South 100 East), at 10:00 AM. Helmets required.

- Mon. May 7      VOLLEYBALL. 6:30 P.M. at Highland High School (2166 S. 1700 E.). Follow the signs near the gymnasiums. The cost is \$1.00. Call Doug for information at 269-1833.
- MONDAY NIGHT BIKE RIDE (NTD). City Creek Canyon. Meet Sam Kingston (355-8043) at the large parking lot, northeast corner of the Capitol complex at 6:30. This popular scenic ride ascends 7.2 miles to Rotary Park. Helmets required.
- Tue. May 8      GRAY CANYON BOATING WORK PARTY, # 2. Meet at the WMC Boat Storage Center at 5:30 pm at 4317 S. 300 W., # 8. Located just north of ZIM's for all who are going on the May 12-13 trip.
- BIKE PLANNING MEETING (NTD). Meet at Rich and Julie Gregersen's house (2552 South 1250 East), 7:30 PM and bring your ideas for new road and mountain bike rides for the Club. A proposal for a change to the write-up on WMC bike rides will also be discussed. Munchies and beverages provided.
- Wed. May 9      WEDNESDAY NIGHT BIKE RIDE (NTD) Millcreek Canyon. Meet leader Ceil Meade at 6:00 at ex-Bagel Nosh parking lot in the Olympus Hills Mall. Helmets are required. For more information call Ceil at 572-2035.
- Thu. May 10      THURSDAY EVENING HIKE. Foothills hike. Meet at the Mt. Olympus trailhead about 1/4 mile north of Tolcat Canyon, at 5600 Wasatch Blvd. See "Thursday Evening Hike Information" on page 4 for more particulars.
- EVENING CLIMBING AT STORM MOUNTAIN. Drive 3.3 miles up Big Cottonwood Canyon to Storm Mountain Picnic Ground. Don't be afraid to approach the questionable looking group of characters loitering around the boulder in the lower parking lot. They're most likely the climbers. Make your climbing intentions known and you'll probably find a partner. Delectable burgers for only a nominal charge.
- May 11-13  
Fri.-Sun.      ARCHES MOTHER'S DAY CAR CAMP. This is our annual Mother's Day Car Camp and General Spring Celebration. We have the small group campground reserved for Friday and Saturday nights. Bring your kids! Call John and Julie Mason, 581-1926 for information and reservations. We are limited to 8 cars, and 35 people. Don't come without a reservation!
- May 11-14  
Fri.-Mon.      THE BARRACKS BACKPACK. EXPLORATORY. The Barracks is the most spectacular portion of Parunuweap Canyon, a Wilderness Study Area adjacent to Zion National Park, and also the location of a proposed dam. We will not go all the way through Parunuweap, but will spend Saturday and Sunday going through the Barracks very slowly, exploring as many as possible of the numerous dead-end slot side canyons which enter between Mineral Gulch and the park boundary. Entrance and exit distances (Friday and Monday) will be 7-9 miles, with an elevation change of about 1500 feet. There will be a lot of unavoidable swimming or deep wading, and pack flotation and waterproofing, as well as extra clothing which will be warm when wet (polypro or neoprene) will be required. Limit 12 persons. Leader: Gordon Swenson, 521-8026 (H) or 363-9345 (W).



May 12-13  
Sat.-Sun.

GRAY CANYON BOATING TRIP, # 2. For those who couldn't make the first trip, or want to do it again. Send your \$25.00 deposit to Jeff Barrell at 5429 Woodcrest Drive, SLC, UT 84117. Call Jeff (278-3510) for questions.

Sat. May 12

CHURCH FORK PEAK HIKE. Rated 5.6. This peak is located on the ridge between Grandeur and Mt. Aire. While seldom hiked, there is a good trail through the scrub oak. Meet Dennis Tolboe (485-6023) at 9:30 A.M. at the Bagel Nosh in the Olympus Hills Shopping Center.

SALT LAKE OVERLOOK NEWCOMERS HIKE. Rated 3.0. The affable Duane Call will head all you interested newcomers, and not-so-newcomers, on a leisurely perambulation up to the overlook. Meet Duane (485-2980), at 9:30 A.M. at the Bagel Nosh in the Olympus Hills Shopping Center.

DRY HOLLOW HIKE. Rated 6.9. Last year I saw more deer on this hike than I've ever seen anywhere. There are many fine views on this hike: at the top is an excellent panorama of Mule Hollow and Big Cottonwood Canyon. Meet Tom Netelbeek (582-1382) at 8:30 A.M. at the Hillside Plaza Shopping Center (7000 S. 2300 E.)

ALPINE LOOP BIKE RIDE (MOD). Cycle the Alpine Loop before the road is open to vehicular traffic. Meet Kermit Earle (268-2199) for this moderate and beautiful loop ride. Carpool from the park & ride off I-15 at 5300 South (West side) at 8:30. Bring lunch or buy at the Sundance Resort.

PARK WEST-EAST CANYON MOUNTAIN BIKE RIDE (NTD). Park West to East Canyon Reservoir via a canyon near Jeremy Ranch, approximately 35 miles with 1/2 paved and 1/2 dirt road. Meet at the Red Pine Condominium Club House 9:00 AM. Turn right for the Park West Resort, go past 7-11, then first left into Red Pine complex, 1/4 mile with club house on the right. Bring lunch or buy at East Canyon Resort. For any additional details call Trudy Bach-Whitehead (485-8337).

Sun. May 13

LAKE MOUNTAINS HIKE. Exploratory. People don't hike the west desert very often, but this is bound to change. So while it's still quiet, and while there is still adventure, join Gene Wooldridge (973-8073) at 8:30 A.M. at the Council Hall Building across from the State Capitol.

MT AIRE HIKE. Rated 3.8. Leader Ann Pole points out that there is a fine view from the top. You can see the Uintas, the Oquirrh, the Wasatch, the Stansburys, and etc! Meet Ann at 9:00 A.M. at the Bagel Nosh in the Olympus Hills Shopping Center. Her number is 278-1223 or if disconnected, 277-1510

STORM MOUNTAIN HIKE. Rated 9.6. Ferguson Canyon at the beginning of this hike is filled with lush vegetation. Farther up you pass through remote mountain meadows spotted with Glacier Lilies. At the top there is a fascinating geological formation, and a spectacular view down Stairs Gulch. Meet Monty Young (255-8392), at 9:00 A.M. at the Hillside Plaza Shopping Center (7000 S. 2300 E.)

ELBOW FORK TO LAMBS CANYON OVERLOOK HIKE. (Rated 3.4) Personal opinion: This is one of the prettiest short hikes in the Wasatch - and



you don't even have to get up very early to go on it. Meet Barry Quinn (272-7097) at the very civilized hour of 10 A.M. at the Bagel Nosh in the Olympus Hills Shopping Center.

Sun. May 13

**TRAPPER'S LOOP BIKE RIDE (MSD).** This is a 65 mile course for strong experienced cyclists, and features a double climb of Trapper's Loop (2,319 feet over 9.4 miles). The course itinerary will encompass a brief loop through Morgan Valley to warm up the legs, and then we'll climb the new highway connecting Weber and Ogden Canyons. Following a fast descent into Huntsville, we'll rendezvous at the Shooting Start Saloon (Utah's oldest tavern) for lunch. Later, we'll do a casual spin around the Huntsville area including a stop to view the Abbey of Our Lady of Holy Trinity Monastery. Then, we'll begin the return climb over Trapper's Loop. Meet Elliott (968-7357) at the K-Mart/Regency at 9:00 to carpool, or at Riverside Park in Morgan (125 North 200 East) at 10:00AM. Mountain bikes are not permitted on this ride; helmets required.

**FARMINGTON BIKE RIDE (NTD).** Bill is rescheduling this ride from "rainy" Sunday last month. 34 miles round trip over almost flat lightly traveled roads, the objective is to have a comfortable introductory ride for first timers. Families are welcome. The route is shown on page 31 of "Cycling Possibilities" Vol. I by Elliott Mott. Refueling en route, if desired, can be accomplished at the McDonald's in Centerville or at the Trailside General Store in Farmington. Meet Bill Ohlsen (364-2159) at the Agriculture Building (350 North 1700 West) at 9:00 A.M. Helmets required.

**SNOW CLIMBING - MT RAYMOND EXPERIENCE CLIMB.** The couliers on the north side of Mt. Raymond offer great glissades with good run outs - great for beginners. Ice ax and registration required. Call Tony Thompson 363-9891.

Mon. May 14

**VOLLEYBALL.** 6:30 P.M. at Highland High School (2166 S. 1700 E.). Follow the signs near the gymnasiums. The cost is \$1.00. Call Doug for information at 269-1833.

**YAMPA BOATING WORK PARTY.** Meet at the WMC Boat Storage Center at 5:30 pm at 4317 S. 300 W., # 8. Located just north of ZIM's for all who are going on the May 17-20 trip. Attendance is required.

**PARLEYS CANYON BIKE RIDE (NTD).** This 16 mile evening ride will be up to Washington Park starting at 6:30 PM. Meet at Eastwood Elementary School parking lot (3305 S. Wasatch Blvd). Leader: Bob Jones (268-2354).

Wed. May 16

**BOATING LEADER'S MEETING.** This meeting is to help future boating trip leaders and coordinators plan and deal with coordinating and leading a boating trip. We will discuss safety, finances, and situations from prior years. We'll meet at Gart Bros. at 7:00 pm. Located at 5550 S. & 900 E.

**WEDNESDAY NIGHT BIKE RIDE (NTD).** Emigration Canyon. Meet Rich Gregersen (467-6247) across the street from the Hogle Zoo parking lot (do not park in the Zoo lot) at 6:00 PM. This 17 mile round trip ride climbs to the top of Little Mountain. Dinner at a nearby valley location will follow.

- Thu. May 17      SAN JUAN BOATING WORK PARTY. Meet at the WMC Boat Storage Center at 6:30 pm at 4317 S. 300 W., # 8. Located just north of ZIM's for all who are going on the May 24-28 trip.
- THURSDAY EVENING HIKE. Big Cottonwood Canyon. See "Thursday Evening Hike Information" on page 4.
- EVENING CLIMBING AT STORM MOUNTAIN. Drive 3.3 miles up Big Cottonwood Canyon to Storm Mountain Picnic Ground. Don't be afraid to approach the questionable looking group of characters loitering around the boulder in the lower parking lot. They're most likely the climbers. Make your climbing intentions known and you'll probably find a partner. Delectable burgers for only a nominal charge, provided of course people volunteer to cook them! Please call Tony at 363-9891 to sign up.
- May 17-20      YAMPA BOATING TRIP (Class II+). From Deerlodge to Split Mountain  
Thu.-Sun.      Campground. The Yampa River has white canyon walls and beautiful campgrounds. Call John Childs at 1-798-8613(w) or 224-7449(h) to save your place. \$25 deposit is required and is to be paid at the work party.
- Fri. May 18      SEA TO SHINING SEA BIKE TRIP PLANNING MEETING. Meet at Marian McMichael's house, 3670 S. 2700 East, 7:30 P.M. Final details will be available for the third stage of our epic coast to coast bicycle trip. The trip is scheduled for August 3-19, leaving from Grand Forks, North Dakota, proceeding along the shore of Lake Superior, through Paul Bunyan's North Woods and Land of 10,000 Lakes, Macinack Island, and on to Sudbury, Ontario. The trip is almost up to the 25 person limit. Call Bob Wright, 1-649-4194 for additional information or come to the meeting.
- May 18-20      ARCHES CAR CAMP. (Overflow from previous weekend.) Because demand  
Fri.-Sun.      exceeds supply, we have reserved the campground for two consecutive weekends. Call Noel de Nevers 581-6024 (office) or 328-9376 (home) for information and reservations. We are limited to 8 cars and 35 people. Don't come without a reservation!
- May 18-20      FISH CANYON BACKPACK. Fish Canyon is a Wilderness Study Area near  
Fri.-Sun.      Grand Gulch. Clayton Benton would like to leave Thursday after work, and hopes to make a loop trip out of it, down Fish Canyon and up Owl. There should be plenty of ruins. Call 277-2144 for reservations.
- May 19-20      MOONSHINE WASH CAR CAMP AND DAY HIKES. Located between  
Sat.-Sun.      Green River Town and The Maze. This is an exploratory hike into a narrow canyon; expect some rock scrambling. Hikes will be approximately 7 and 5 miles each. Bring moonshine if you have any! Call Sandy or Geoff Freethy 485-5989. Limited group size.
- Sat. May 19      ELBOW FORK TO THE TERRACES HIKE. (Rated 1.9) This is one of the very few hikes that I know of that is almost completely forested. There are occasional breaks in the trees, but mostly this is a walk among tall, ancient pines. Meet Norm Pobanz (266-3703) at the Bagel Nosh in the Olympus Hills Shopping Center at 9 A.M.

Sat. May 19

LAKE BLANCHE HIKE. (And maybe Lillian and Florence, too!) Rated 5.7+. Charlie Keller hopes that the group might like to make the acquaintance of the other gals. They are all very pretty. If any of you haven't seen the mountain which is the club's emblem, now is your chance - the Sundial towers over these lakes. Meet Charlie (467-3960) at the mouth of Big Cottonwood Canyon at 9:00 A.M.

MT BEN LOMOND HIKE. (Rated 8.0) Your leader suggests that you bring good boots, a jacket, and gaiters just in case there should be a little snow. Mt. Ben Lomond is located in the North Ogden Pass area, and so you need to meet Kenny Strong (1-546-1344) at the Plain City Park and Ride next to I-15 at 9:00 A.M.

REYNOLDS PEAK HIKE. (Rated 5.2) I've always thought that the view from Reynolds was one of the best in the Wasatch. It is a fine panorama of the big peaks on the south side of Big Cottonwood Canyon, and it isn't too difficult a hike. Meet Bob Wright (1-649-4194), at the mouth of Big Cottonwood Canyon at 9:00 A.M.

GOSHEN VALLEY BIKE RIDE (MOD). This is a 51 mile ride around Southern Utah County. We'll circumnavigate West Mountain cycling through some of Utah's finest orchards. The course tours the communities of Goshen, Genola and Elberta. The terrain is easy, flat to rolling. We'll stop for lunch at a park in Elberta - so bring a picnic lunch. Meet Elliott (968-7357) at the park and ride off I-15 at 5300 South (West side) at 9:00 AM to carpool, or at Payson Park (100 East 200 South), at 10:15 AM. Mountain bikes are discouraged on this ride; helmets required.

CITIBANK CENTURY BIKE RIDE (NTD to MSD). Sponsored by Citibank Utah in conjunction with the Bonneville Bicycle Touring Club, will provide a 25, 62 and 100 mile loop options (all flat). Registration forms will be mailed to past participants and will be available at major bike shops and from the Mayor's Office (535-7704). You MUST pre-register. Ride is limited to the first 1,000 riders. The entry fee of \$15 includes food and a new-design T-shirt. This ride raises funds for the Salt Lake Homeless Shelter. For more information call Jeff or Sandy Levenson (487-0540).

Sun. May 20

LEWIS PEAK HIKE. (Rated 8+) This is a chance to see new country. Lewis Peak is the mountain to the north of Parleys Junction. Meet Sam Kingston (355-8043) at the Regency Theatre parking lot on Parleys Way at 8:00 A.M.

DESERET PEAK HIKE. (Rated 8.1) Jim Frese will lead you up to the first *really* big (11,000 ft) peak of the season. He requests that you bring an ice axe, and be prepared for a little bit of the last of the white stuff. Meet Jim at the Tooele Exit Truck Stop on I-80 at 8:30 A.M. Jim's number is 1-882-5222.

CIRCLE ALL PEAK HIKE. (Rated 3.2) You start out on a steep, but short trail up Butler Fork, turn left at the junction, and walk up through a meadow filled with Mule's Ear and Stinging Nettle. Then a short walk in the quakies and you're there! Meet Jay Rentmeister (254-3722) at the mouth of Big Cottonwood Canyon at 9:00 A.M.

Sun. May 20

BROADS FORK HIKE. (Rated 4.6) A few years ago there was a hawk on this trail that would attack people. Luckily this rapacious raptor is gone now, but it is still a neat hike. The meadow at the top lies beneath the massive towers of Twin Peaks and Dromedary, which really makes for a lunch with a view. Oscar Robison (943-8500) will be at the mouth of Big Cottonwood Canyon at 8:30 A.M.

SANPETE TURKEY TOUR BIKE RIDE (MOD). A moderate bicycle ride in Juab and Sanpete Counties. Leaving the ZCMI parking lot at South Towne mall (106th South Exit from I-15), at 8AM to car pool to Nephi or meet at Main and route 132 in Nephi at 9:15 AM. This will be a casually paced ride through turkey producing country in central Utah. Starts with a long uphill out of Nephi and on rural roads through Fountain Green and Moroni to Chester, then loops back through Wales and Freedom for a total of 55 miles. Bring your own lunch and drink because there is nothing open on Sunday (surprise). Helmets required. We encourage tandems and will be riding ours! For more information, call Mike and Jean Binyon (485-5560).

SNOW CLIMBING - SOUTH RIDGE OF SUPERIOR. One of the Wasatch Mountain's classic snow climbs. The perfect continuation of the snow climb session on Mt Raymond. Participants must bring and know how to use an ice ax. Registration is a must. Call Paul Horton 521-4296.

Mon. May 21

VOLLEYBALL. 6:30 P.M. at Highland High School (2166 S. 1700 E.). Follow the signs near the gymnasiums. The cost is \$1.00. Call Doug for information at 269-1833.

SAN JUAN BOATING WORK PARTY. Meet at the WMC Boat Storage Center at 5:30 pm at 4317 S. 300 W., # 8. Located just north of ZIM's for all who are going on the May 23-28 trip.

MONDAY NIGHT BIKE RIDE (NTD). City Creek Canyon. Refer to write-up from May 7th.

Tue. May 22

MIDDLE FORK BOATING WORK PARTY. Meet at the WMC Boat Storage Center at 6:00 pm at 4317 S. 300 W., # 8. Located just north of ZIM's for all who are going on the May 28-June 3 trip.

Wed. May 23

PARLEYS CANYON BIKE RIDE (NTD). Refer to write-up May 14th. Leader: Ceil Meade (572-2035).

May 23-28

Wed.-Mon.

SAN JUAN BOATING TRIP (Class II). We'll launch at Sand Island and will take 6 days to make this trip leisurely. Also planning for early daily starts to have time for afternoon hikes. Call Tim Poole at 547-9400. There's not much time left. Send your \$25 deposit to Tim ASAP.

Thu. May 24

THURSDAY EVENING HIKE. Mill Creek Canyon. See "Thursday Evening Hike Information" on page 4.

EVENING CLIMBING AT STORM MOUNTAIN. Drive 3.3 miles up Big Cottonwood Canyon to Storm Mountain Picnic Ground. Don't be afraid to approach the questionable looking group of characters loitering around the boulder in the lower parking lot. They're most likely the climbers. Make

your climbing intentions known and you'll probably find a partner. Delectable burgers for only a nominal charge.

May 24-28  
Thu.-Mon.

**SAN JUAN BOATING TRIP** (Class II). We'll launch from Mexican Hat. Call John Veranth at 278-5826 to save your place. Please get your \$25.00 deposit in by May 15th since we have to send in a non-refundable deposit to the BLM. There should be plenty of time for hiking.

May 25-28  
Fri.-Mon.

**ZION PARK BACKPACK FROM LAVA POINT.** Easy backpack with 2 nights at Potato Hollow and day hike along the scenic West Rim Trail. Call Kay Millar at 583-1381 by May 18 to register. Limit 8. Novice backpackers are welcome and should call early to allow time for planning your gear.

May 25-28  
Fri.-Mon.

**HUMBOLDT NAT'L FOREST SHELLCREEK RANGE EXPLORATORY CAR CAMP.** The Shellcreeks are north of Ely, with elevations up to 11,883 ft. This is a new opportunity for the club to visit another Nevada paradise. Donn Seeley will be your leader (evenings 581-5668, mornings (583-3143)

Sat. May 26

**BEARTRAP FORK HIKE.** (Rated 5.3) WWHAP... it's time for Beartrap! (sorry...) Wasatch Trails describes Beartrap Fork as a "refreshingly unpopulated secret of nature," and it is one of the least hiked trails in Big Cottonwood. From the saddle there is a fine view of the azure waters of Lake Desolation. Your leader is Joyce Sohler (487-6536), who will meet you at the mouth of Big Cottonwood Canyon at 9:00 A.M.

**GOBBLERS KNOB HIKE.** (Rated 7.7) How did this peak ever get its weird name? The story I've heard is that the miners, at one time, kept turkeys up there. It seems possible. Jim Piani (272-3921), suggests that you be prepared to hike in some snow. Meet at the Bagel Nosh in the Olympus Hills Shopping Center at 9:00 A.M.

**GRANDEUR PEAK HIKE.** (Rated 5.7) Are your kids turning into couch potatoes? Bill Rosquist has a solution: why don't you and yours join him on this official "families are welcome" hike. Meet Bill (295-0458) at the Bagel Nosh in the Olympus Hills Shopping Center at 9:00 A.M.

**GREENS BASIN HIKE.** (Rated 2.5) This is one of the prettiest meadows in the Wasatch. Despite being visited quite regularly, it still has a feel of being somewhat secluded. The meadow is fringed by tall stands of Douglas Fir, and just off to the southeast there is a tiny cabin. Leah Mancini will lead this hike (582-7912). Meet at the mouth of Big Cottonwood Canyon at 9:00 A.M.

**SNOW CLIMBING - TANNERS TRIPLE TRAVERSE.** Spectacular climbing and views. Participants must be competent in climbing exposed snow ridges and in using an ice ax on steep slopes. Approx. travel time 12-14 hours. Call Tony Torri 942-2472 to register.

**PURPLE TURTLE BIKE RIDE (MOD).** This is a 50 mile ride over quiet back roads with some moderate climbs. We will have lunch at the Purple Turtle Drive-In in Pleasant Grove. Meet at Draper Park at 12500 South 1300 East at 9:00 AM. Ride leader: John Peterson (277-8817). Helmets required.

Sun. May 27

MULE HOLLOW HIKE. (Rated 2.0) The history of the mining operations in the Wasatch is very interesting. This hike gives you some idea of the trouble that the early miners went to make a small profit. All of the ore from the mine at the end of the trail had to be hauled out on mules - hence the name. This is an afternoon hike (3:00 P.M) and Richard Zeamer (355-3751) will meet you at the mouth of Big Cottonwood Canyon.

MT OLYMPUS HIKE. (Rated 8.3) Last chance before it gets too hot to hike up Mt Oly! It is a 4,200 foot elevation gain, so George Westbrook (942-6071) wants to get an early start. Meet him at 8:00 A.M. at the mouth of Big Cottonwood Canyon.

MINERAL FORK HIKE. (Rated 5-7 depending on distance) This is another relatively lightly used trail that follows closely by a tumbling stream. Gene Wooldridge wants to be flexible on the length of the hike because of snow. Gene, who is quite an expert on local fauna, says that this is a good hike to look for snowshoe hares. Meet Gene (973-8073) at the mouth of Big Cottonwood Canyon at 9:00 A.M.

Mon. May 28

MT AIRE HIKE. (Rated 3.8) So you couldn't get out of town for the long weekend? Not to worry, Doug Stark (277-8538) will fix you up with a brief foray into our local wilderness. Meet at the Bagel Nosh in the Olympus Hills Shopping Center at 9:30 A.M.

WHITE PINE HIKE. (Rated 6.3) Glissade: an intentional slide by a mountain climber down a steep slope covered with snow. This one should be a lot of fun. Meet Marc Hutchinson (355-3222) at the mouth of Big Cottonwood Canyon at 9:00 A.M.

KESSLER PEAK HIKE. (Rated 7.4) This is our first "maybe" hike, i.e. I haven't been able to find a leader. If you'd be interested in leading it, give me a call at 467-7186. It will meet at the mouth of Big Cottonwood Canyon at 9:00 A.M.

VOLLEYBALL. If there is enough interest on Memorial Day, volleyball will be held at 6:30 in Fairmont Park. Easiest entry and parking is to turn west off 1100 East/Highland (they merge) onto Ashton Ave. (2310 S), going straight into the park. To confirm play, call Doug at 269-1833.

May 28-June 3  
Mon.-Sun.

MIDDLE FORK OF THE SALMON BOATING TRIP (Class IV). Exciting whitewater near peak of run-off. Call Allan Gavere at 486-1476 to get involved in this one. \$25 deposit required.

Tue. May 29

DESOLATION BOATING WORK PARTY. Meet at the WMC Boat Storage Center at 6:00 pm at 4317 S. 300 W., # 8. Located just north of ZIM's for all who are going on the June 2-7 trip.

Wed. May 30

MAIN SALMON BOATING WORK PARTY. Meet at the WMC Boat Storage Center at 5:30 pm at 4317 S. 300 W., # 8. Located just north of ZIM's for all who are going on the June 4-10 trip.

Thu. May 31

THURSDAY EVENING HIKE. Big Cottonwood Canyon. See "Thursday Evening Hike Information" on page 4.

Thu. May 31

EVENING CLIMBING AT STORM MOUNTAIN. Drive 3.3 miles up Big Cottonwood Canyon to Storm Mountain Picnic Ground. Don't be afraid to approach the questionable looking group of characters loitering around the boulder in the lower parking lot. They're most likely the climbers. Make your climbing intentions known and you'll probably find a partner. Delectable burgers for only a nominal charge.

June 2-7  
Sat.-Thu.

DESOLATION (GREEN RIVER) BOATING TRIP (Class III-). Janet Embry (322-4326) will coordinate this one. \$25 deposit required by May 15. River Guide Needed.

Sat. June 2

WHITE FIR PASS FAMILY HIKE. Rated 3.1. Bowman Fork is a good place to introduce your kids to the beauty of the Wasatch, with first flowers of spring gracing the streamside. This hike is famous for its elegant lavender clematis and its delicate white columbines. Meet Leslie Mullens (363-0560) at the Bagel Nosh in the Olympus Hills Shopping Center at 9:30 A.M.

DAYS FORK TO THE MINE HIKE. Rated 4.6. At the mine there are two big rusting boilers, a pump, and a huge geared wheel which has become a planter for wildflowers. This is all that remains of a once important mining operation. Meet Christine Allred (261-8183) at the mouth of Big Cottonwood Canyon at 9:00 A.M.

THAYNES PEAK HIKE. Rated 7.1. Janet points out that this hike is both steep and "a good leg stretcher." Thaynes Canyon is a rugged, pretty place, and I would suggest that you wear good high-topped hiking boots. Meet Janet Friend (268-4102) at the Bagel Nosh in the Olympus Hills Shopping Center at 9:00 A.M.

HANK'S ANNUAL MT RAYMOND VIA HIDDEN FALLS HIKE. Join Hank Winawer (277-1997) for a little wander in the Wasatch; up Butler Fork to Raymond, and then down to Hidden Falls. Fantastic Scenery. Hank, by the way, is the fastest wit in the west. Meet him at the mouth of Big Cottonwood Canyon at 8:30 A.M.

KAMAS VALLEY BIKE RIDE (MOD). This 52 mile ride will be a casually paced tour of scenic Kamas Valley. The course is particularly serpentine and circuitous, and promises to reveal EVERYTHING you always wanted to know about cycling the back roads around the Kamas area. We'll traverse the valley, touring the rural communities of Francis, Woodland, Peoa, Marion and Oakley. We'll meander betwixt and between working farms and ranches, and cycle past some of the areas finest trout streams. The terrain for the most part is easy flat to rolling, notwithstanding a couple of very short climbs. 1.6 miles of the course is un-paved. We'll return to the cars for lunch, so bring a cooler and a picnic lunch. Meet Elliott (968-7357) at the K-Mart/Regency parking lot at 8:00 AM to carpool, or at Kamas Park (75 East 100 South) in Kamas, at 9:00AM. Helmets required.

Sun. June 3

CARDIFF PASS HIKE. Rated 3 or 4. This is unusual - a relatively easy, seldom done hike. We had a very difficult time getting a leader for this hike, but we were finally successful, and Kathy Coleman (466-5636) will meet you at the mouth of Big Cottonwood Canyon at 9:00 A.M.



Sun. June 3

FLAGSTAFF PEAK HIKE. Rated 4.3. Clark deNevers points out that this hike is "steep but not long." It is also an interesting hike. There are a few gnarled, old trees at the top, and some narrow rock ridges to walk along, (no exposure however.) Meet Clark (595-7015) at the mouth of Big Cottonwood Canyon at 8:30 A.M.

WILLOW LAKE HIKE. Rated 1.5. This hike gives new meaning to the phrase "busy as a beaver" since you can thank the little furry flat-tails for your destination. Carol Beasley (484-6617) says that this will be a leisurely paced hike, which will take in an old, old cabin dugout. Meet at the mouth of Big Cottonwood Canyon at 10:00 A.M.

WILDCAT RIDGE HIKE. Rated 15.4. Huff, huff, puff, puff, this is about as tough as it gets. Note also that this hike involves lots and lots of exposure, (and not the kind that requires sunscreen.) Meet Steve Carr (486-7774) at the Bagel Nosh in the Olympus Hills Shopping Center at 7:00 A.M.

DOG LAKE VIA BIG COTTONWOOD CANYON HIKE. Rated 3.8. The route up from Mill D is a little steeper than the Big Water Trail; however you have vastly less chance of getting run over by one of our mountain bike brethren. Meet Rose Novak (487-6034) at the mouth of Big Cottonwood Canyon at 9:00 A.M.

SNOW CLIMBING - NORTH FACE OF THE NORTH PEAK OF THUNDER MT. Route will be up Coal Pit Gulch and out Bells Canyon. An ice ax and competence in using it is required. A headlamp is also recommended. Another full day in paradise (12-14+ hours). If the snow is gone by June, we'll do Thunderbolt Ridge instead. Call Dave Smith 278-6515 to register.

June 4-10  
Mon.-Sun.

MAIN SALMON BOATING TRIP (Class III). Joan Hadly (531-0727) will coordinate. \$25 deposit required. River Guide Needed.

Mon. June 4

VOLLEYBALL 6:30 in Fairmont Park. Turn west off of 1100 East/Highland Drive (they merge) onto Ashton Ave (2310 South) and go straight into the park. For information, call Doug at 269-1833.

Tue. June 5

TUESDAY NIGHT BIKE RIDE (NTD). City Creek Canyon. Join Sam Kingston for this popular ride. Meet at the large parking lot, northeast corner of the Capitol complex, 6:30PM.

Wed. June 6

WEDNESDAY NIGHT BIKE RIDE (NTD). Emigration Canyon. Meet Ceil Meade (572-2035) across the street from the Hogle Zoo parking lot (do not park in the Zoo lot) at 6:30 PM. This 17 mile round trip ride climbs to the top of Little Mountain.

Thu. June 7

THURSDAY EVENING HIKE. Mill Creek Canyon. See "Thursday Evening Hike Information" on page 4.

Fri. June 8

GRANDEUR PEAK BY THE LIGHT OF THE SILVERY MOON HIKE. (Rated 5.7) Moonlight hikes are neat. You can sit up on top of Grandeur and watch the sun set over the Great Salt Lake, while seeing the moon rise in the east. Meet Gene Wooldridge at the Bagel Nosh in the Olympus Hills Shopping Center at 7:00 P.M. His number is 973-8073.

June 8-10  
Fri.-Sun.

**BOOKCLIFFS EXPLORATORY BACKPACK.** This is a joint WMC/Utah Wilderness Association trip, which will give you a chance to explore this seldom visited area. (It is a strange coincidence that we scheduled two Bookcliff backpacks this year.) George Nickas of the UWA knows the area well, having been involved with the reintroduction of Bighorn Sheep into the cliffs. Your WMC leader is our president, Mr. John Veranth (278-5826). Please call to register.

June 9-10  
Sat.-Sun.

**BOATING RIVER RESCUE COURSE.** Traditionally, graduates of this class proclaim it as the most important activity of the summer. Ken McCarthy is an excellent teacher, in class and on the river. Mark it on your calendar now. Limited participants, so call Tim Poole at 547-9400. More details next month.

Sat. June 9

**TERRACES TO ELBOW FORK & RETURN HIKE.** Rated 4-5. Duane Call plans to go up the Bowman Fork Trail, then follow "an old mountain man trail" up to the Terraces trail, proceed to Elbow Fork, and then return via the Pipeline trail. This is your chance for fun and a little bit of exploration on a very easy hike. Meet Duane (485-2980) at the Bagel Nosh in the Olympus Hills Shopping Center at 9:00 A.M.

**SOUTH WILLOW LAKE (STANSBURYS) HIKE.** The Stansburys are nice, in that they are relatively close, and relatively uncrowded. South Willow is a beautiful lake. I can remember, one afternoon, marveling at the clarity of the water, and hoping that the Stansburys remain lightly visited for a few more years. Meet me, Jerry Hatch (467-7186), at the Union 76 parking lot at the Tooele Exit of I-80 at 9:00 A.M.

**SALT LAKE OVERLOOK HIKE.** Rated 3.0. Randy will set an easy pace on this very gradual trail. This is a good hike for those of you who complain that we always go too fast. Meet Randy Long (943-0244) at the Bagel Nosh in the Olympus Hills Shopping Center at 9:00 A.M.

**THE BEATOUT HIKE.** Rated 14. And for those of you who would like something a little bit more strenuous than Randy's hike, contact John Mason (581-1926). John requests that you register by the Thursday before, (June 7th). John says that he will hike the ridges between White Pine Canyon and Bells Canyon. He also promises a fun day - 'nuff said.

Sun. June 10

**REYNOLD'S PEAK HIKE.** Rated 5.2. Eric Newby once wrote a wonderful book called A Short Walk in the Hindu Kush. Perhaps we could entitle this hike A Short Walk in the Wasatch Front. Meet your guide, Rob Rogalski (942-8142) at the mouth of Big Cottonwood Canyon at 9:00 A.M.

**GOBBLERS KNOB VIA BOWMAN FORK TRAIL HIKE.** Rated 8.8. Another chance to hike the big mountain with the funny name. You also have a chance to hike it with a club legend as your leader. Meet Norm Fish (964-6155) at the Bagel Nosh in the Olympus Hills Shopping Center at 9:00 A.M.

**RED PINE LAKE HIKE.** Rated 5.3. On a bright summer morning, the deep, clear waters of the lake mirror rugged talus covered slopes, and tall stands of fir and spruce. It is one of the prettiest lakes in the Wasatch, and only a 3.5 mile hike. Meet Marv Goldstein (277-4054) at the mouth of Big Cottonwood Canyon 9:00 A.M.

- Mon. June 11      VOLLEYBALL 6:30 in Fairmont Park. Turn west off of 1100 East/Highland Drive (they merge) onto Ashton Ave (2310 South) and go straight into the park. For information, call Doug at 269-1833.
- Tue. June 12      ALPINE BOATING WORK PARTY. Meet at the WMC Boat Storage Center at 5:30 pm at 4317 S. 300 W., # 8. Located just north of ZIM's for all who are going on the June 16-17 trip.
- Thu. June 14      THURSDAY EVENING HIKE. Big Cottonwood Canyon. See "Thursday Evening Hike Information" on page 4.
- June 16-17      ALPINE (SNAKE RIVER) BOATING TRIP (Class II). Larry Stewart will lead this popular Club trip. Call him at 485-7818 to confirm your participation. \$25 deposit required.
- Sat. June 16      FLOWER HIKE. (LEADER'S CHOICE) I think that to really enjoy the wilderness, you have to learn to see it. There is an intricate, minute beauty on either side of the trail, if you but stop and observe. Louise Hollander (277-1416) means to do exactly that on her hike, and she invites you to join her at the mouth of Big Cottonwood Canyon at 8:30 A.M.
- LAKE BLANCHE HIKE. Rated 5.7. There are some places that seem to be synonymous with summer. Sitting on that big, flat, warm rock, feeling the June sun splash down on the lake, and you, feels like - pure summer. Meet Phil Berger (266-8560) at the mouth of Big Cottonwood Canyon at 8:30 A.M.
- BOX ELDER PEAK HIKE. Rated 9.6. Box Elder is the tall peak north of Timpanogos. Your leaders wish to point out that this is a long hike and you need to be in good shape. It is a wonderful hike though. You start out among groves of pine interspersed with small meadows, and then climb up into a rugged ravine filled with boulders and wildflowers. The view from the top makes the effort well worth while. Meet Ilka and Allen Olsen at 7:30 A.M. at the Fashion Place Mall north of ZCMI II. Their number is 272-6305.
- WMC POTLUCK at Don and Audrey Kelley's spacious home in Timberline, starting at 6:30 P.M. Audrey says she misses those big relaxed noisy wonderful WMC gatherings in days of old. Therefore please bring a hot dish or something to barbecue, a salad or dessert, your own drink, \$1.00 to cover paper goods, and a spirit of good fun. Also feel free to bring sleeping bag and pad if you want to stay overnight for the Toll Canyon hike the next day. Directions: Go east up I-80 to the Parleys Summit exit. Follow the Kelley/Stevens signs.
- Sun. June 17      SECOND ANNUAL BLUEBELL HIKE UP TOLL CANYON. Rated 6.5 if Murdock Peak is reached. Trailhead starts at Don and Audrey Kelley's house in Timberline. Hikers may turn back at any time and retrace steps to the house and car (an important factor in Father's Day planning.) Carpooling at 9:00 A.M. at the Regency Theatre parking lot on Parleys Way, and follow instructions given for the WMC potluck of the day before. If you have any questions please call 1-649-9884.
- GREENS BASIN HIKE. Rated 2.5. The basin changes its appearance regularly, and is beautiful in all of its seasons. One of the finest however, is

that of early summer - an exaltation of wildflowers! Meet Elaine and Jay Abramowitz (278-8076) at the mouth of Big Cottonwood Canyon at 9:00 A.M.

Sun. June 17

GRANDVIEW PEAK VIA MUELLER PARK HIKE. Rated 10.9. This is another hike seldom done by the club. If you don't hike it this year, it may be several years before the club does it again. Grandview is the high peak at the head of City Creek Canyon, and to join J. Dewell (295-2754) for this adventure, please meet at the south end of the parking lot of the K-Mart at the Woods Cross Exit of I-15 at 8:00 A.M.

SUNSET PEAK HIKE. Rated 4.9. You go up to Catherine's Pass and then along a long, curving ridge to the southeast. From the top you can see Timp to the south, the Uintas to the east, and Lakes Catherine, Martha, and Mary hung in glistening steps below you. Meet Joe Gates (943-0957) at the mouth of Big Cottonwood Canyon at 9:00 A.M.

MAYBIRD LAKES HIKE. Rated 6.0. The Maybird Lakes are at the base of the Pfeifferhorn, and the rocky scree comes right down into the waters of two of them. These are small alpine lakes, redolent with the sharp, sweet smell of the high meadows which border them. Meet Floyd Mead (292-0284) at the mouth of Big Cottonwood Canyon at 9:00 A.M.

Tue. June 19

ALPINE CANYON BOATING WORK PARTY. Meet at the WMC Boat Storage Center at 6:30 pm at 4317 S. 300 W., # 8. Located just north of ZIM's for all who are going on the June 23-24 trip.

TUESDAY NIGHT BIKE RIDE (NTD). City Creek Canyon. See write-up for June 5th.

Wed. June 20

WEDNESDAY NIGHT BIKE RIDE (NTD) Millcreek Canyon. Meet leader Ceil Meade at 6:30, ex-Bagel Nosh parking lot in the Olympus Hills Mall. Helmets are required. For more information call Ceil at 572-2035.

June 23-24  
Sat.-Sun.

ALPINE (SNAKE RIVER) BOATING TRIP (Class II). Martin Gregory will lead this popular Club trip. Call him at 582-2403 to confirm your participation. \$25 deposit required.

Mon. June 25

LOCHSA BOATING WORK PARTY. Meet at the WMC Boat Storage Center at 5:30 pm at 4317 S. 300 W., # 8. Located just north of ZIM's for all who are going on the June 27-29 trip.

Tue. June 26

MAIN SALMON BOATING WORK PARTY. Meet at the WMC Boat Storage Center at 5:30 pm at 4317 S. 300 W., # 8. Located just north of ZIM's for all who are going on the June 28-July 4 trip.

June 27-29  
Wed.-Fri.

LOCHSA RIVER BOATING TRIP (Class III-IV). Randy Klein (272-8059) will lead this exciting whitewater trip down the Lochsa River (Idaho). Will lead 3 different single-day trips. \$25 deposit required. We can meet up with the June 30 Payette trip afterwards.

June 28-July 4  
Thu.-Wed.

MAIN SALMON BOATING TRIP (Class III). Donna Kramer (272-0418) will coordinate this fun trip. \$25 deposit required. River Guide Needed.

## FUTURE OUT OF TOWN ACTIVITIES

- June 15-25      **CARIBBEAN SAILING TRIP.** See article elsewhere for details, or contact Vince Desimone, Sailing Coordinator, at 1-649-6805.
- June 29-July 4  
Fri.-Wed.      **YELLOWSTONE BICYCLE TRIP.** We will again stay at Bob Wright's "rustic" cabin at Henry's Lake, Idaho, and do day rides in incomparable area. Planned are rides to Upper and Lower Yellowstone Falls, along the shores of picturesque Yellowstone Lake, swimming in the Firehole River, and riding the loop past Quake Lake, the Madison River, and Hebgen Lake. You may even be able to do a moose criterium. If you enjoy hiking and fishing, there is plenty of that available also. See the new growth after the recent fires. You can come for part or all of the time. Cost is minimal. Call Bob Wright, 1-649-4194 for additional information or to sign up. Car pooling will be arranged to the cabin.
- July 7-8  
Sat.-Sun.      **OAKLEY RODEO BIKE WEEKEND (MOD).** This ride, an overnigher sponsored by the Bonneville Bicycle Touring Club, will include a sag wagon, western barbecue supper on Saturday night, rodeo ticket, dance, fireworks after the rodeo, breakfast on Sunday (cooked by the town) and a commemorative patch. The ride will start from Salt Lake City (45 miles one way) or from Park City (20 miles one way), your choice. Total cost, \$21 each and a limit of 200 riders! Pre-registration is required. Call John Peterson (277-8817) for more details. Pre-registration is required.
- July 21-Aug 4      **PACIFIC CREST TRAIL BACKPACK.** Kira Kilmer will lead 2 four-day high alpine trips on the well-marked Pacific Crest trail in the Ross Lake area of northern Washington state. Great views west to the high Cascades. No technical climbing. Should be sunny, days in mid-60's. About 8 miles per day with packs. Call 364-5044 to register for planning meetings. Hikers may get together to drive up for just one of the loops, (one week with drive time).

---

## SEVENTH ANNUAL BASIN AND RANGE SEMINAR

The Utah Audobon Society announces its Seventh Annual Basin and Range Seminar will take place May 19th and 20th of this year. This popular weekend educational camp-out is open to all members of the public. This year the weekend of hands-on natural science courses will be conducted Saturday and Sunday at Simpson Springs, a Great Basin Habitat, 2 hours southwest of Salt Lake City and west of Provo.

Offerings this year will include Great Basin Mammal Ecology, Plant Ecology, Lizards and Snakes, Ice-Age Lakes, Basin and Range Raptors and Birds, Environmental Writing, and Environmental Ethics. Each course is led by an authority in its field.

Tuition for the weekend camp-out and seminar is \$20.00 with children over 6 welcome under a parent's supervision. Each participant is asked to contribute a dish to the Saturday evening pot luck dinner. For details on how to attend this unique opportunity for continuing discovery of our natural environment, call 521-2446 or 466-5364.



# CONSERVATION NOTES

by Keith Johnson

## WASATCH CANYONS COORDINATING COMMITTEE

Once again the *Rambler* deadline fell just before the meeting of the Canyon Coordinating Committee. The Committee met on April 19, four days after the deadline for *Rambler* articles and it will not be until June's *Rambler* that we can make a report. So read your newspapers!

Business which was to have been discussed at the April meeting included: 1) Little Cottonwood Trail Plans (two plans--a Nature Trail for the Handicapped at Snowbird and a Historical Trail from Snowbird down to the canyon mouth); 2) Bell's Canyon trailhead locations; 3) Alta and Snowbird summer maintenance and land grooming plans; 4) Brighton Master Plan Update by Randy Doyle; 5) Big Cottonwood Canyon Sewer Update and 7) Mill Creek Canyon Fee Program status report.

The meetings of the WCCC (affectionately named "WACKO" by its members) are open to the public. If you are interested in attending as an observer and would be willing to report back on any important developments, please contact Keith Johnson.

## PRESERVING PRIVATE LAND IN THE CANYONS

In March, Janet Friend, John Reily, Milt Hollander and myself met with a member of the County Planning Staff and Nature Conservancy to begin exploring strategies and funding sources for the preservation of Wasatch Canyon land which is now in private hands. A number of interesting ideas were brainstormed. It would be premature to go into further detail.

## SNOWBASIN LAND EXCHANGE UPDATE

Save Our Canyons has filed an appeal on the Forest Service decision to exchange 220 acres of forest land near Snowbasin for unspecified land owned elsewhere by Earl Holding's development company (see March *Rambler* Conservation Notes).

Neither environmentalists nor pro-development groups were satisfied with the Forest Service decision and several other appeals have been filed. About an equal number of these are from the developer side as the environmental side of the issue.

## WASATCH MOUNTAIN CLUB EARTH DAY ACTIVITIES

Thanks to Michael Treshow and Wick Miller, the WMC was able to offer two hikes to non-club members in celebration of Earth Day. Other Wasatch Mountain Clubers participated in the planning and staffing of a booth at the Earth Day Eco-Fair. The Fair was held at Cottonwood Mall on April 21-22 and over 30 organizations and businesses took part.

## CONGRESSMAN OWENS TO INTRODUCE HUNTING ON FED LAND BILL

The Congressman plans to introduce a bill next month which will ensure the continued use of Federal lands for recreational hunting and fishing. It will make all federal land open to hunting and fishing unless there are "compelling reasons for closing them."

## BOATING DIRECTOR

by Jeff Barrell

We had a record 45 people come to the planning meeting with many new faces and many new volunteers to help set-up or coordinate trips. We managed to plan 20+ trips, which is going to be a great season (see the boating schedule on opposite page). The new volunteers really enabled us to plan more trips, but we **MUST** ensure that Club boaters support these new coordinators or trips will fall apart and we will lose these new participants. To keep new people interested and active, we need help:

We need river guides for trips such as Desolation and Main Salmon. I know the Club has many boaters from way back who know all these rivers well. Here is an opportunity to take a group downstream without all the hassle of arranging shuttles, assigning work details, and figuring finances. We need responsible, safety-conscience persons who can work with a coordinator to provide a safe, pleasant, and learning experience. Please call me if interested.

We also need help leading groups on the Payette trip, and experienced teachers for the Alpine training trip(s). If you can't deal with large groups, how about smaller groups, or even one-on-one? We can offer multiple training trips if we have enough experienced volunteers. Call me to offer your help or if you have any questions.

If, for some reason, you cannot or should not lead or teach, you can still help out. First of all, be patient with a new leader or coordinator. Offer advice, but his/her decision is final. A good leader should be sensitive and flexible to the group's interest, but nobody can please everybody all the time, so accept and abide to the leaders decisions. Leading a trip is a learning experience, so help the leader by communicating and volunteering. The Club is considering a leadership class to help new and old leaders and coordinators.

The Club does not run by itself, it needs volunteer help from its members to offer a variety of trips and to help its members improve their skill levels. A small contribution from each person can really add up, and benefit all. Think about how you can help and call me soon.

### CARIBBEAN SAILING TRIP PLANNED

June 15-25, 1990

by Vince Desimone, Sailing Coordinator

Imagine sailing through the fabulous Virgin Islands of the Caribbean. Ahead lie the ingredients that dreams are made of - exotic tropical islands with peaked mountains, palm-fringed sandy white beaches surrounded with beautiful crystal-clear waters in shades of blue and turquoise, soft warm breezes that pull our spirited yacht through sun-filled days and into the romantic glow of a Caribbean sunset. Intrigue and excitement await.

**Touring Canoes  
Whitewater Canoes  
Sea Kayaks**

**12 Boats in Stock**

**Wenona, Dagger & Aquaterra  
New and Used  
Solo and Tandem**

**Call to see or place  
Special Orders**

**Bear River Canoe Co.  
(801) 533 - 9090**



The trip will include sailing, snorkeling, scuba diving, beaches and fun ashore. Each boat will have six to eight people aboard. While sailing experience is not necessary, each person will be expected to participate in this joint venture, including helping with sailing, food preparation, and all other duties.

The trip is expected to cost about \$600. per person, excluding airfare and diving costs. This will cover the costs of the ship, food

while on the ship, and the \$4/person/day Virgin Islands cruising tax. A deposit of \$200 will be required to hold your space.

We expect to have four 44' sail boats and two windsurfers. When this article was written the trip was nearly full. Contact Vince Desimone 1-649-6805 for information or to sign up for the trip.

## BOATING TRIPS PLANNED FOR THIS YEAR AT A GLANCE

LAUNCH DATE	RIVER (Segment)	CLASS	LEADER	PHONE
May 5	Gray Canyon	II	Jim Elder	943-3321
May 12	Gray Canyon	II	Jeff Barrell	278-3510
May 17	Yampa	II+	John Childs	224-7449
May 23	San Juan	II	Tim Poole	547-9400
May 24	San Juan	II	John Veranth	278-5826
May 28	Middle Salmon	IV	Allan Gavere	486-1476
June 2	Desolation Canyon	III	Janet Embry	322-4326
June 4	Main Salmon	III	Joan Hadly	531-0727
June 9	River Rescue Course		Tim Poole	547-9400
June 16	Alpine Canyon	II	Larry Stewart	485-7818
June 23	Alpine Canyon	II	Martin Gregory	582-2403
June 27	Lochsa	II-IV	Randy Klein	272-8059
June 28	Main Salmon	III	Donna Kramer	272-0418
June 30	Payette	II-IV	LEADER NEEDED	
July ?	Arkansas	II-IV	Randy Klein	272-8059
July 7	Ruby Horsethief	I	LEADER NEEDED	
July 11	Hell's Canyon	IV	Patty Giffin	277-1168
July 14	Alpine Beginner	II	LEADER NEEDED	
July 16	Main Salmon	III	Jeff Barrell	278-3510
July 21	Alpine Family	II	LEADER NEEDED	
July 29	Westwater Canyon	III	LEADER NEEDED	
Aug 11	Westwater Canyon	III	Liza Poole	547-9400
Aug 13	Westwater Canyon	III	Larry Hardebeck	467-7120
Aug 19	Westwater Canyon	III	LEADER NEEDED	
Aug 24	Westwater Canyon	III	LEADER NEEDED	
Sept 02	Westwater Canyon	III	Craig Homer	968-1195
Sept 08	Westwater Canyon	III	Jim Brown	359-0754
Sept 15	Westwater Canyon	III	Craig Stearns	272-0828
Sept 23	Westwater Canyon	III	LEADER NEEDED	
Sept 29	Westwater Canyon	III	Marlene Egger	485-7818

We need a leader for any trip listed as "LEADER NEEDED". If you are willing to lead one of them, or if you have any schedule changes or additions, call Carl Cook at 485-4586 as soon as you can.

## **FROM THE CANOEING COORDINATORS**

by Randy and Kathy Klein

Many of you are aware of the programs conducted by S'PLORE. They take people who are mentally or physically disadvantaged on various types of outdoor trips. In August and September, S'PLORE will be conducting canoe trips on the Jordan River for their clients. They are in need of volunteers to help with the program. This is a service that is very much in demand, since they are able to provide it for a cost of only 5 dollars to the clients. S'PLORE is starting to put together their volunteer list for the canoeing program now, so if you are interested, please call them at 363-7130.

Be aware of the beginning boaters' trips to Gray's Canyon on the weekends of May 5 and May 12. As you read this, it may already be too late to sign up for the May 5 weekend. Boaters of any ability and in any type of craft are welcome on these trips (now that I've said that, someone will undoubtedly call and want to paddle an inflatable giraffe). Check the activity calendar for the trip coordinators.

We seem to be accumulating new canoeists in the club. I'd like to extend an invitation to you (and others) to call if you're looking for places to paddle, people to paddle with, or to inquire about leading a river trip (272-8059).

## **IMPORTANT MESSAGE FOR KAYAKERS, CANOEISTS, RRAFTERS OR ANYONE WHO RENTS VANS FOR WMC TRIPS**

Holiday Payless Rent-A-Car has had some concerns over treatment of their vans, specifically 1) damage done to the van roof from roof racks and to bumpers from trailers, and 2) the heavy load on their vans from towing trailers, and from carrying roof racks and 15 people. Holiday sells their vans after two years and are concerned about the value of the vans if they have been abused. They have agreed to continue to allow our use of their vans with roof racks and trailers under the following conditions:

- 1) The largest trailer allowed is a 5' X 8' trailer. Also when using a trailer, remove the plastic strip that covers the back of the bumper where the trailer hitch fits. Put inside the van and remember to replace it after the trip is over.
- 2) Never stand or walk on the roof of the van. To tie up kayaks or canoes, stand on a cooler, the step ladder, or whatever.
- 3) No more than 12 people in the van. No big deal; it'll be more comfortable with only 12 people.
- 4) We lose the 10% discount.

A note about loading trailers. Although the instructions on loading trailers say to load at least 60% of the weight to the front of the mid-line of the trailer, in this case more is not better. There are two weight-bearing components of a trailer, the trailer wheels and the van bumper. If you put too much of the weight in a trailer forward, too much of the trailer's weight will rest on the bumper. The bumpers are expensive. The trip will pay any damage to the van bumper caused by the trailer (or to the roof caused by the roof rack). Load 60% of the weight forward but not much more than that. The proper weight-bearing components of a trailer are the wheels.

These rules do not apply just for Club boating trips but for anyone in the WMC who rents vans with the intention of using them to carry a roof rack and/or trailer. Our relationship with Holiday and other van rental agencies is important and we would like to continue it.



# MOUNTAINEERING

by Tony Thompson

Thanks to all those who have agreed to coordinate May trips and help with the climbing class.

There seems to be general agreement in the Club that there aren't enough young members and we need to encourage more young people to join. To that end, in the latter part of May, I am going to invite about 100 U of U beginning climbing students to try some of the Club's activities. The four sections of beginning climbs will be ending, and a number of people (some of them young and very pretty/handsome) will be looking for someone to take them for easy beginning climbs. If I am assured by a number of volunteer leaders that we can assist these people, I will give them a brief handout directing them to Club Activities. If you are a climbing leader and willing to take beginners climbing, please call Tony at 363-9891 to sign up.

Volunteers are also needed to lead trips/climbs this spring and summer. So far, only one mountaineering survey has been returned. I need to hear from you.

Burger Chefs, Burger Chefs, we must have Burger Chefs.

## TRAIL MAINTENANCE DAY

June 23, 1990

Mark your calendar for Saturday, 23 June, to join other Club members and the Forest Service in a Trail Maintenance Day. This is our opportunity to restore and maintain historic hiking trails in the Wasatch Mts. More than just a trail clearing exercise, Trail

Maintenance Day is a renewal of the Club's commitment to open and accessible hiking in the Wasatch. A club-sponsored cookout at the Lodge in Brighton follows trail activities. See the June Rambler for details.

Hikers and trip leaders: We need your input on trail conditions as soon as possible for Trail Maintenance Day planning. Please pass your information to the Hiking Directors or to Chris Biltoft at 359-5645.



702 THIRD AVE  
533-8671

### **MOUNTAIN BIKING? WE DO IT!!**

**IT'S THAT SIMPLE.** IF YOU'RE LOOKING FOR A MOUNTAIN BIKE AND PLAN ON RIDING IT IN THE DIRT, WE'RE THE PEOPLE TO SEE. WITH LINES LIKE **PAT CHANCE, FISHER, MARIN, IBIS, BIANCHI, MOUNTAIN GOAT, MERLIN, BONTRAGER, KONA AND HARO** ALL UNDER ONE ROOF, YOU CAN SPEND MORE TIME TEST RIDING AND LESS TIME DRIVING FROM SHOP TO SHOP.

### **KNOWLEDGE AND PRICES?**

FIND SOMEONE WHO RIDES OR RACES A MOUNTAIN BIKE AND **ASK THEM ABOUT US.**

### **PARTS AND ACCESSORIES?**

**WE'VE GOT LOTS OF THEM.** NOT JUST BREAD AND BUTTER SHIMANO, BUT TRICK STUFF LIKE COOK BROS., BULLSEYE, WTB, SALSA, EXOTIC WHEELGOODS AND A WALL FULL OF KNOBBY TIRES.

### **REPAIRS? WE DO THEM RIGHT!!**

**AND USUALLY OVERNIGHT.** NEED A WHEEL BUILT TODAY OR A QUICK TUNE BEFORE A TRIP TO THE DESERT? **GIVE US A CALL.** WE DON'T HIRE SALESMEN, **EVERYONE WHO WORKS HERE IS A MECHANIC.** **WE LOVE BIKES AND THE PEOPLE WHO RIDE THEM.**

**IT'S THAT SIMPLE.**



FROM THE

## SKI • TOURING DIRECTOR

by Kira Kilmer

### Keeping Score: It's a wrap

Oh well...not too many of you got out there for our corn season...5 trip leaders reported no shows when the sun started to hit the mid-40's. Guess everyone started to head for the rivers and desert country. The trip count was 48 with 10 trips still to go, 3 weather cancellations, and 3 cancellations for lack of interest or meeting time confusion, in addition to the 5 mentioned late in the season. Two hundred forty-two people climbed, skated, telemarked and toured plus a few hearty nibblers on the gourmet finale at the Spruces Campground cabin.

For next year, how about it beginners? Want a pre-season social with equipment rundown, introduction to trails, and a chance to meet other beginning tourers? If this is you, call Norm Fish, the new Director, and volunteer to help him put it together.

Seniors interested in touring together, call Lee Steorts, 5157 S. 1870 E., SLC 84117...check the Directory for his telephone. Mid-week Mom's and Weekend Workers have expressed an interest in getting fellow tourers organized...try listing some tours, you folks.

The clinics proved popular again this year. Audrey Kelley takes all the honors for being the biggest draw: 95 unofficial (rough count), 65 actually signed on the list for the Telemark instruction...38 signed on the the Toll Canyon expedition. Our thanks, Audrey. Cindy Cromer's innovative skating clinics gave 21 WMC members a chance to try a new sport.



And Nance Randall and Alain Bergeron entertained a trip record of 27 people on their January 12 Moonlight Tour.

I'm beginning to understand what you like, telemarkers. (Note George Westbrook's Pfeifferhorn trip was the smallest completed tour: George plus one. Kudos to Cheoul Kim for learning enough in his first season to keep up with George.)

And don't forget the Snowshoers: 8 trips and 64 attendees...they're a loyal lot...saw a lot of the same names turning up every weekend.

Wax those skis to protect the bottoms, and see you out there next season, powder brats.

**TREK<sup>®</sup>**

**MOUNTAIN BIKES      ROAD BIKES**

FULL SELECTION OF TREK BICYCLES NOW IN STOCK

**STOUT<sup>®</sup>**  
**cycles**

**NOW WITH 3 LOCATIONS:**

1330 EAST 200 SOUTH  
581-9693  
2815 SOUTH HIGHLAND DR.  
467-7638

SPONSOR OF THE  
PEDELI RACING CLUB

**NEW STORE:**  
**846 EAST 7200 SOUTH**  
**566-1458**

**TREK USA**

---

# TRIP TALK

---

## KLONDIKE BAR

by Anonymous

Once again few people registered for Chuck Ranney's spring-break backpack to the Maze. So, we opted for an escalante adventure across remote seldom travelled canyons cutting through the precipitous northern edge of Lake Powell underneath Navajo Point and the Kaiparowits Plateau.

The Ghosts of Glen Canyon by Gregory Crampton inspired Chuck to attempt to follow a possible supply route used by gold miners between Hole-In-The-Rock Road & Klondike Bar to the S. W. on the now drowned Colorado River. We would wind our way around the jutting fingers of the plateau above and head to the side canyons of Glen Canyon with the fabled names: LLEWELLYN, REFLECTION, HIDDEN PASSAGE, TWILIGHT, CASCADE and DRIFTWOOD.

Fortune was with us (Chuck, Bill Wolverton and Suzanne Storer). A storm the preceding week filled a few potholes with water where we had to have it to make the trip go. Part-time Glen Canyon NRA Ranger, Bill, provided endless energy and slickrock skills to locate perhaps the only route available across Twilight and around Cascade Canyons.

Day 3 found the 2 men at the steps cut in the slickrock at Lake Powell above the now drowned Klondike Bar completing their goal, part of a 5 day total of 40 miles over slickrock and soft Entrada sand. I lazed around our encampment that day at the head of the deep chasm of Cascade Canyon enjoying the desert silence, napping in the heat of mid-day and sketching the wild undulating slot canyon cut deep into Navajo sandstone with high cliffs above and the cool reservoir down the slope south.

We were blessed with seeing shards of 2 coiled clay pots in such an inhospitable place. And we discovered a food cache bucket in Twilight Canyon refilled with refuse from: "The Colorado River Walk, Backpacking Expedition from the Rockies to Baja, Cache #14 -10 days, David and Rebecca Kiel." Chuck would like to know if anyone knows anything about this trek undertaken in either 1954, '64, or '84? The date was partially illegible. We also saw many flint

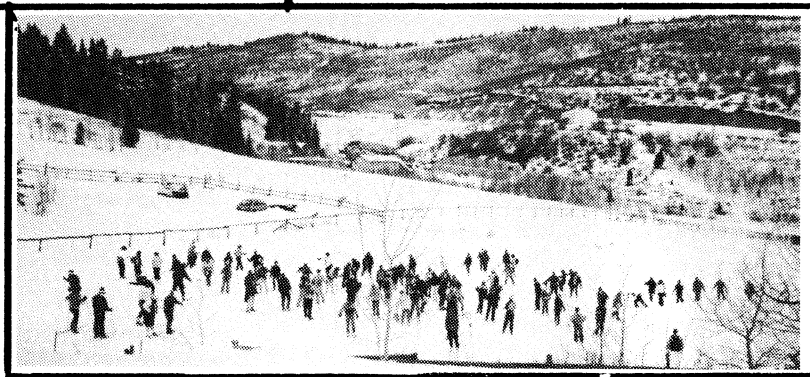
chips on a bench above Twilight Canyon, the by product of tool making by the Anasazi.

So, all in all, quite a HIKE! Well planned with some memorable finds, agreeable companionship, and that all pervasive desert canyon stillness imbued soundly within once again.





Audrey Kelley's Ski Clinic.  
Photos by Don Kelley.



## MAY SKY CALENDAR

by Ben Everitt

### MOON

First Quarter	May 1	June 8
Full Moon	May 9	June 15
Last Quarter	May 17	June 22
New Moon	May 24	June 29

### MOONRISE

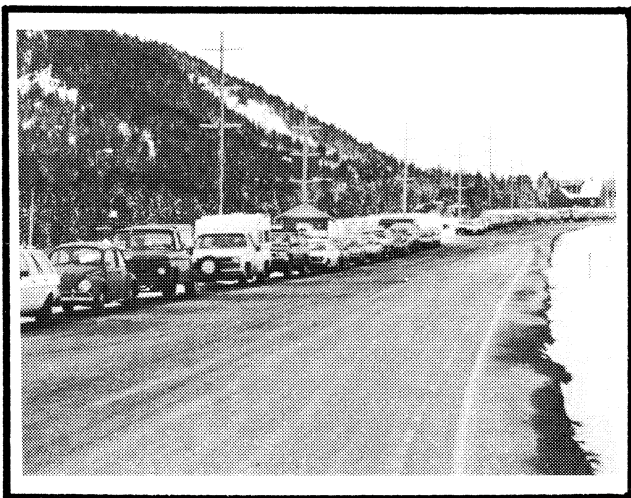
(times for 40 N, 112 W)

Saturday	MDT
May 5	4:30 PM
May 12	11:30 PM
May 19	3:00 AM
May 26	7:30 AM
June 2	3:30 PM
June 9	10:00 PM

Source: Astronomical Almanac for 1990

Note on moonrise times: Add an hour for each day later than the given date, and another hour if you are in the mountains.

**PLANETS:** VENUS remains bright in the morning sky. MARS is becoming brighter higher in the morning sky. SATURN is in the constellation Sagittarius which now rises about midnight.





## SUMMER ADVENTURES

Utah Museum of Natural History

1990



*Bitter, howling winds blow across great mountains of glacial ice. Pine forests reach to the edge of Lake Bonneville, ancestor to the Great Salt Lake. A small group of humans prepares for the hunt. Mammoths, giant bear, ground sloth, musk oxen and saber-toothed cats share this frozen landscape. This is Utah during the great Ice Age.*

The following is a list of our summer offerings. **PREREGISTRATION IS REQUIRED FOR ALL PROGRAMS**, except when otherwise noted. Refunds will be given upon request up to two weeks before the program begins. The museum reserves the right to cancel programs due to insufficient enrollment. If this occurs, participants will be notified and all fees will be refunded.

For information call the Museum Education Department at (801) 581-4887 or 581-6927. Office hours are 8 a.m. to 5 p.m. Monday through Friday.

### CALENDAR OF EVENTS

May 1	Scholarship application deadline for Summer Field Science Academy
May 2	Shorebirds of the Great Salt Lake Field Trip
May 3	"Museum Notes" on KRCL Radio
May 10	Field Science Academy: Spring Wildflower Workshop, 5th-8th grades
May 20-24	Rock Art of San Juan County field trip
May 26	Ice Age Dinamation opens!
June 2	Peering at Peregrines
June 3-7	Upper Canyon de Chelly field trip
June 7 & 14	Dinamation Family Workshop
June 7	"Museum Notes" on KRCL Radio
June 9-14	Chacoan Outliers field trip
June 11-12	Museum Resources
June 13-15	Multicultural Art Experience II
June 13	Field Science Academy begins, grades 6 - 8
June 13, 23-25	Rock Art Documentation Field School
June 16	Natural History of the Great Salt Lake
June 18-21	Fun with Elementary Science
June 20-24	Utah Arts Festival: Children's Art Yard
June 25	High School Field Science Program begins
June 29-30	Multicultural Art Experience
June 29-30	Glaciers: Rulers of the Ice Age
June 30-July 4	Teton Wilderness Pack Trip

## WASATCH FIREFIGHTERS NEEDED

by Chris Biltoft

The Wasatch-Cache National Forest wants to establish a local cadre of trained firefighters who can respond quickly to fire outbreaks and other emergencies. Participants will be paid at an hourly rate of \$6.88 or more, depending on past experience or other special qualifications. Qualifications include:

- \* Be a US citizen of at least 18 years of age.
- \* Pass a physical fitness test.
- \* Be available for rapid response to phone calls and have transportation to point of hire.

Training, tools, clothing, meals, safety equipment, and transportation from the point of hire to the work area will be provided. The Forest Service is particularly interested in hearing from Club members who would like to form a rapid response team. For further information, call one of the numbers below and identify yourself as a Wasatch Mt. Club member:

Forest Supervisor's Office-Federal Bldg, SLC, 524-5030; Salt Lake Ranger District, 6944 S. 3000 E., 524-5042; Ogden Ranger District, 507 25th St., Ogden, 625-5112; Logan Ranger District, 860 N. 1200 E., Logan, 753-2772; Interagency Fire Center, 755 Guardsman Way, SLC, 524-5036.



## CLASSIFIED ADS

### AD POLICY

Members may place classified ads for used sports equipment free of charge. Other classified ads require a \$5.00 donation to the WMC for up to 20 words with \$.20 per word over 20. Words of 2 letters or less will not count as a word.

### NOTICE!

Send your ad (with a check enclosed if it is not a used sports equipment ad) before the 13th of the month to Sue DeVall, 11730 South 700 West, Sandy UT 84070 or call Sue at 572-3294 for information.

The Rambler cannot accept any ad that is inconsistent with the purposes of the WMC, or that offends the sensibilities of club members.

### FOR RENT

RIVER EQUIPMENT FOR RENT. Call 584-8300 (9-5), or 359-0220 after 5. Ask for Bruce Beck.

### ROOMMATE WANTED

1 or 2 adults to share BIG country home on 7 acres. Horses & smaller pets ok. 900 square ft indoor storage area. I'm looking for fun loving outdoor types. \$360 for 1 person, \$240 each for 2. Share utilities & responsibilities. Call Sue at REI 486-2100 or 572-3294. Available 6 May.

Person to share large house with yard and workshop. Pets ok, located near U. \$290 + utilities. 533-9090.

### USED EQUIPMENT

10 MAN RUBBER RIVER BOAT. Black neoprene US Navy. Good condition. \$300. Call Barbara 466-7702.

WOMENS NORDIC SKI BOOTS. Size 34. \$35. Alfa Langrenn. Call 261-1081.

FIBERGLASS KAYAK, PADDLE, LIFEJACKET - \$75; Seda paddle - \$25; Break-down paddle - \$55; CKS "yellow jacket" pogies - \$20; Roku drysuit with new seals - \$75; Stohlquist dry top, needs seals - \$20; Okesport booties, medium - \$25; zipper booties, medium - \$15; neoprene hood - \$5; neoprene gloves - \$10. Call John Battalio, days 538-4052, evenings 359-2048;

WETSUIT. Mens small 1/4 inch neoprene nylon lined, like new. \$75 or best offer. SPRINGBAR TENT, 2 person backpacking, \$75 or best offer. Paul 277-2952

DANCER KAYAK. Harmony skeet, Romer helmet, Extra Sport jacket, Seda floats, Mitchell Paddle blades. \$700 or best offer. Eddie 272-9277

SPECIALIZED STUMPJUMPER. 1986, 20.5 inch, Suntour group. Steve 393-5240.

KAYAK, PRECEPTION QUEST. Length 12'10", beam 24", float bags \$250. 532-2020, Jim Yetter.

1990 KELTY WINDFOIL II. Only used once. 4 season extreme weather tent. 2 person built in vestibule. Lifetime warranty, 7 lbs, 6 oz. \$375. Call Chuck 576-0905.

EUREKA DOMENSION TENT. Excellent condition, 6 1/2 lbs. New Easton aluminum shock-corded poles. Good 3 season backpacking tent. Free standing 2 pole modified dome. \$75. Call Chuck 576-0905.

ROSSIGNOL TOURING XC SKIS. Good condition with new Asolo Glissade Binding. 210 cm waxable, \$40. Call Chuck 576-0905.

RAICHL MONTAGNA BOOTS. Mens size 12. Excellent heavy hiking or general mountaineering boots. Never worn outside. \$120. Call Chuck 576-0905.

C1 PERCEPTION GYRAMAX with spray skirt. \$350. 2 used WINONA CANOES, one at \$700, one at \$800. Call Chet 533-9090.

## WASATCH MOUNTAIN CLUB

Membership applicants must participate in at least two Club outdoor or service activities, verified by the signatures of approval from the activity leaders. Yearly dues are \$25.00 single, \$35.00 couple. A \$5.00 initiation/reinstatement fee is charged.

### 1990-1991 GOVERNING BOARD

President	John Veranth	278-5826
Secretary	Jim Elder	943-3321
Treasurer	Cynthia Anderson	359-8823
Membership	Julie Ann Jones	278-4753
Boating	Jeff Barrell	278-3510
Conservation	Janet Friend	268-4102
	Keith Johnson	268-2453
Entertainment	Marc Hutchison	355-3227
Hiking	Jerry Hatch	467-7186
	Gene Wooldridge	973-8073
Lodge	Vince Desimone	1-649-6805
	Kathy Klein (Rentals)	272-8059
Mountaineering	Tony Thompson	363-9891
Publications	Pat Beard	596-8099
Ski Touring	Norm Fish	964-6155
Information	Barbara Jacobsen	943-3715
	Aaron Jones	467-3532

### COORDINATORS

Bicycling	Rich Gregersen	467-6247
	Nance Randall	485-1483
Canoeing	Kathy Klein	272-8059
	Randy Klein	272-8059
Kayaking	Marlene Egger	277-2894
Sailing	Vince Desimone	1-649-6805
Rafting	Lidia DiLello	943-3321
	Jim Elder	943-3321
Volleyball	Doug Stewart	269-1833

### TRUSTEES

Karin Caldwell	942-6065
Dale Green	277-6417
Milt Hollander	277-1416
Alexis Kelner	359-5387
O'Dell Peterson	Trustee Emeritus
Dale Green	Historian

# WASATCH MOUNTAIN CLUB

APPLICATION FOR NEW MEMBERS/REINSTATEMENT FOR PREVIOUS MEMBERS  
RAMBLER SUBSCRIPTION QUALIFICATION FORM

**DO NOT USE THIS FORM TO RENEW YOUR MEMBERSHIP**

Please read carefully and fill out completely. Your signature is required.

APPLICANT'S NAMES: \_\_\_\_\_

ADDRESS: \_\_\_\_\_ CITY \_\_\_\_\_ ST \_\_\_\_\_ ZIP \_\_\_\_\_

HOME PHONE \_\_\_\_\_ DAY PHONE \_\_\_\_\_ BIRTH DATE \_\_\_\_\_

I hereby apply for ☐ NEW MEMBERSHIP ☐ STUDENT  
☐ SINGLE membership in the WMC  
☐ REINSTATEMENT ☐ COUPLE

I ☐ DO wish to receive the *Rambler* (the WMC publication). Subscription price  
☐ DO NOT is not deductible from the dues.

Enclosed is \$ \_\_\_\_\_ for one year's (Mar 1 19\_\_ to Feb 28 19\_\_) dues and application fee.  
\*\*\* Make checks payable to Wasatch Mountain Club (CHECKS ONLY) \*\*\*

Remit: \$20.00 for student membership (\$15.00 dues and \$5.00 application fee)  
\$30.00 for single membership (\$25.00 dues and \$5.00 application fee)  
\$40.00 for couple membership (\$35.00 dues and \$5.00 application fee)  
(NOTE: These rates include the \$12.00 for the *Rambler* subscription)

YOU MUST COMPLETE THE FOLLOWING FOR MEMBERSHIP CONSIDERATION  
THE ACTIVITY DATES MUST HAVE BEEN WITHIN ONE YEAR OF THIS APPLICATION  
qualifying activity \_\_\_\_\_ date \_\_\_\_\_ signature of recommending leader \_\_\_\_\_

1. \_\_\_\_\_

2. \_\_\_\_\_

I agree to abide by all the rules and regulations of the WMC. I am 18 years of age or older.

I am willing to serve the WMC in the following areas: (please check)

☐ Service Project ☐ Lodge work ☐ Conservation ☐ Rambler ☐ Thurs Night Hikes  
☐ Hike Leader ☐ Boat Leader ☐ Ski Leader ☐ Social Assist

I found out about the WMC from \_\_\_\_\_ , \_\_\_\_\_

APPLICANT'S SIGNATURE: \_\_\_\_\_

MAIL APPLICATION AND CHECK TO: MEMBERSHIP DIRECTOR  
WASATCH MOUNTAIN CLUB  
888 SOUTH 200 EAST, SUITE 111  
SALT LAKE CITY, UTAH, 84111

LEAVE BLANK

Receipt #: \_\_\_\_\_ Date Received: \_\_\_\_\_ Amount Recv'd: \_\_\_\_\_  
(or check #) (less application fee)  
Board Approval Date \_\_\_\_\_ (Rev 7/88 Pub 5/90)

IN CASE OF EMERGENCY PLEASE NOTIFY  
THE SALT LAKE COUNTY  
SHERIFF'S OFFICE AT:

**535-5855**

OR THE APPROPRIATE EMERGENCY  
AGENCY IN YOUR LOCATION.

Avalanche  
Forecast  
Recordings

Logan	752-4146
Moab	259-7660
Ogden	621-2362
Provo	374-9770
Park City	649-2250
Salt Lake	364-1581

WASATCH MOUNTAIN CLUB  
888 SOUTH 200 EAST, SUITE 111  
SALT LAKE CITY, UT 84111

**5/90**

SECOND CLASS  
POSTAGE PAID  
SALT LAKE CITY, UT  
NO. 053410