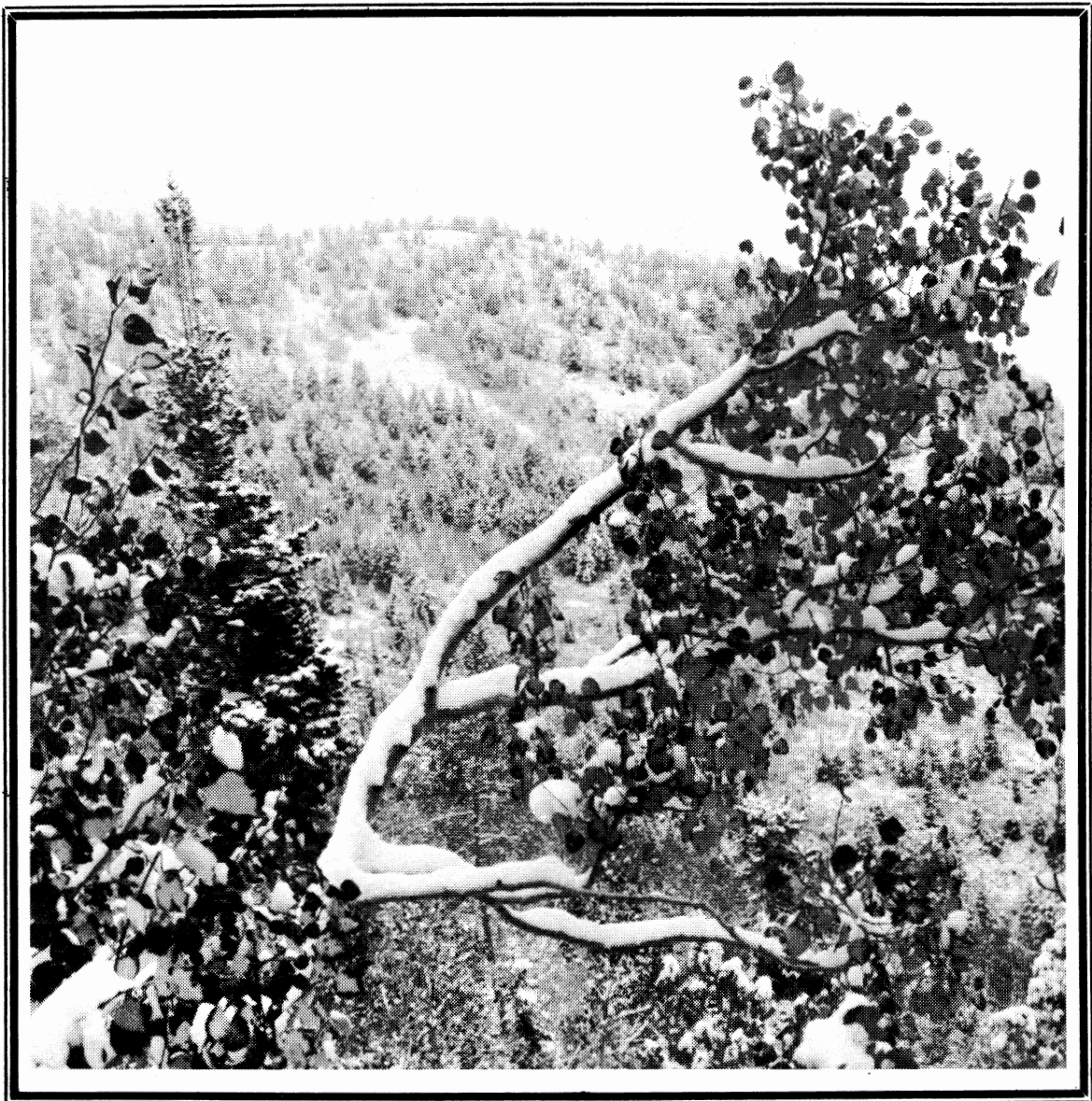


# The Rambler

Wasatch Mountain Club  
JANUARY



VOLUME 68, NUMBER 1, JANUARY 1990

1991

# The Rambler

Magdaline Quinlan  
Leslie Mullins  
Managing Editors

ADVERTISING: Jill Pointer  
ART: Kate Juenger  
CLASSIFIED ADS: Sue De Vail  
MAILING: Rose Novak And Mark Mckinzie  
PRODUCTION: Magdaline Quinlan  
SKY CALENDAR: Ben Everitt  
TYPING COORDINATOR: David Vickery  
TYPISTS: Diane Little, Phyllis Papan, Clari Powers

THE RAMBLER (USPS 053-410) is published monthly by the WASATCH MOUNTAIN CLUB, Inc., 888 South 200 East, Suite 111, Salt Lake City, UT 84111. Telephone: 363-7150. Subscription rates of \$12.00 per year are paid for by member ship dues only. Second-class Postage paid at Salt Lake City, UT.

POSTMASTER: Send address changes to THE RAMBLER, Membership Director, 888 South 200 East, Suite 111, Salt Lake City, UT 84111. CHANGE OF ADDRESS: This publication is not forwarded by the Post Office. Change of Address should be submitted in writing to the Membership Director, 888 South 200 East, Suite 111, Salt Lake City, UT 84111. All correspondence regarding the mailing of THE RAMBLER should be directed to the Membership Director at that address. Allow 45 days for address changes.

The right is reserved to edit all contributions and advertisements and to reject those that may harm the sensibilities of WMC members or defame the WMC.

Copyright 1991, Wasatch Mountain Club.

## JANUARY 1991 TABLE OF CONTENTS

From the President	3
Twenty-five Years Ago in the <i>Rambler</i>	4
Events At A Glance	6
Activities	7
Conservation Notes	17
Boating Director	22
Trip Talk	28
Classified Ads	31

COVER PHOTO: by Knick Knickerbocker

## RAMBLER INFORMATION

IF YOU HAVE MOVED: Please notify the WMC Membership Director, 888 South 200 East, Suite 111, Salt Lake City, UT 84111, of your new address.

IF YOU DID NOT RECEIVE YOUR RAMBLER; Contact the Membership Director to make sure your address is in the Club computer correctly.

IF YOU WANT TO SUBMIT AN ARTICLE: Articles, preferably typed double spaced, must be received by 6:00 pm on the 15th of the month preceding publication. Mail or deliver to the WMC office or to the Editor. Include your name and phone number on all submissions.

IF YOU WANT TO SUBMIT A PHOTO: We welcome photos of all kinds: black & white prints, color prints, and slides. Please include captions describing when and where the photo was taken, and the names of the people in it (if you know). **Photos will not be returned unless requested and accompanied by a self-addressed stamped envelope.**

DEADLINE: Submissions to THE RAMBLER must be received by 6:00 pm on the 15th of the month preceding publication. Mail or deliver to THE RAMBLER office or to the Editor. Include your name and phone number on all submissions.

## THE RAMBLER

THE RAMBLER, the official publication of the Wasatch Mountain Club, is published monthly by and for its members. Persons wishing to become members may receive THE RAMBLER for two months by writing the Membership Director, 888 South 200 East, Suite 111, Salt Lake City, UT 84111 and enclosing \$3.00. Checks are to be made payable to the Wasatch Mountain Club. There is a \$10.00 charge for returned checks.

## WMC PURPOSE

(Article II of the WMC Constitution)

The purpose shall be to promote the physical and spiritual well being of its members and others by outdoor activities; to unite the energy, interests and knowledge of students, explorers and lovers of the mountains, deserts and rivers of Utah; to collect and disseminate information regarding the Rocky Mountains in behalf of science, literature and art; to explore and picture the scenic wonders of this and surrounding states; to foster awareness of scenic beauties; and to encourage preservation of our natural areas including their plant, animal and bird life.

# FROM THE PRESIDENT

---

By John Veranth

## **The Rambler**

Apologies to all those who were inconvenienced by the Rambler being late last month. With the Rambler, as with protection of natural areas, "You never know what you have until it is gone." Many of us depend on the Rambler to plan our month and the editors for the last 10 years have done such an excellent job of getting it mailed on time. Perhaps we have forgotten how much work the job of Rambler editor really is.

The Publications Director/Rambler Editor has the hardest and most thankless job on the club's Governing Board. And I say that after serving a total of nine years on the board in four different positions. The job has no "off-season" to give the director a rest and people are more upset about a late Rambler than about late payment of bills. The editor has to allocate space, make judgements about controversial material, enforce deadlines, and organize the production and mailing. Expectations have also increased from the days in the early 70's when some Ramblers were only 8 pages long.

We have a new team as Rambler Editor this month.

Due to increased work commitments, Pat Beard has decided that it would be best to resign as Editor and two individuals who have been working on the Rambler staff have offered to step in and take over the job for the remainder of Pat's term.

Thanks go to Pat for the job he has done as Editor and also for all the years that he has worked on the Rambler production staff. Thanks also go to Leslie Mullins and Magdaline Quinlan for volunteering for the job.

## **Nominations to Governing Board**

The nominating committee (Tom Silberstorf, Janis Huber, and Terry Rollins) has put together a slate of willing (with some arm twisting) and qualified volunteers to run for election to the 1991-92 governing board. See the listing elsewhere in this Rambler.

The Nominations Banquet on Saturday, January 12 is an opportunity to meet the candidates and nominations are also accepted from the floor at the banquet. Serving on the all-volunteer board is a lot of work but it is also a satisfying opportunity to contribute to the club. Thanks to those the incumbents who are running again as well as the new candidates.

# TWENTY-FIVE YEARS AGO IN THE RAMBLER, JANUARY 1966

---

By Dale Green, Historian

Members were reminded that dues will be due on March 1st, not May 1st as in previous years. The change, along with selecting Board members to assume their office on the same date, was made to better facilitate transition from Winter to Summer activities.

Junior Memberships, for those under the age of 18, was a much discussed issue. There was no middle ground as those for and those against continued their arguments from previous issues. Editor Jack McLellan assumed the cause for letting 16 and 17-year olds join the WMC to "mold a few of these topnotch young people into expert outdoorsmen and conservationists." The arguments were countered by Wolf Snyder and Clare Davis who believed that there were already enough activities elsewhere for that age group and worried about practical matters of guidance and administration.

"Have you really climbed Kings Peak?", an article by Dale Green, asked. Since the club was founded, we have been climbing a 13,498 foot peak as the highest in the state, which was shown on the old Gilbert Peak quadrangle surveyed at the turn of the century. A register had been established there by WMC members since 1923. A new map now shows a peak to the east to be higher at 13,528 feet while the peak we were climbing to be 16 feet lower at 13,512 feet.

Trip reports of backpacks to the Grand Canyon, by Marie Demint, and Kolob, by Charlie Keller, were reported along with many of the usual local activities. At least one ski tour each day of the weekend was scheduled. Everyone used regular downhill skis with lift cables and climbing skins.

A half-page membership application on the back cover required attendance of one scheduled event, a \$2.00 entrance fee, and \$6.00 dues, along with a recommendation by a member and a Director.

---

## **SQUARE DANCING AT THE LODGE**

**JOIN US IN THE PIONEER SPIRIT!**

**RECOGNIZED CALLER --- BART BARTHOLOMA**

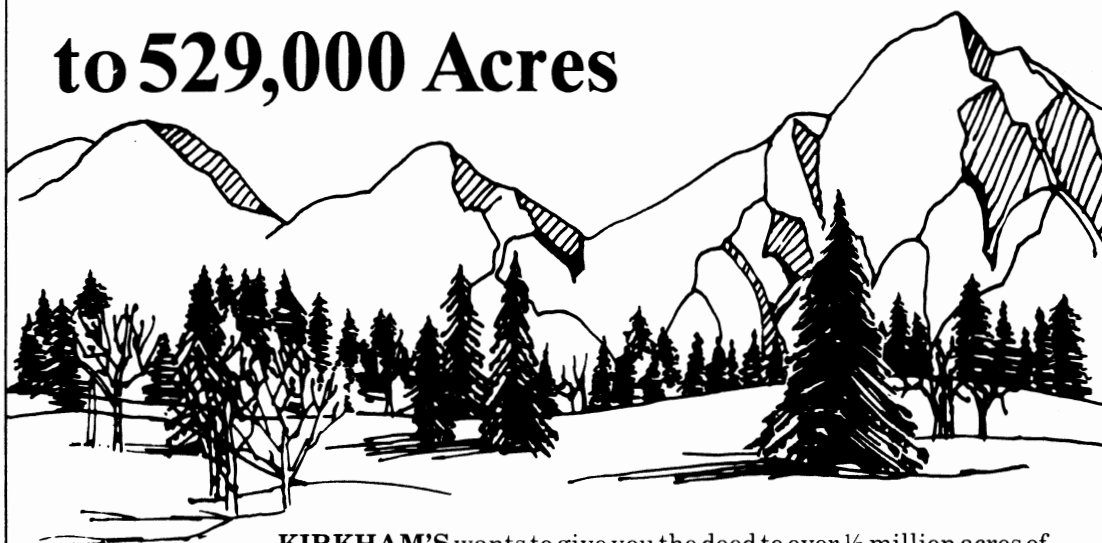
**NO EXPERIENCE REQUIRED**

**SATURDAY, JANUARY 19  
7:00 PM POTLUCK MUNCHIES  
8:00 PM CALLING STARTS  
\$4.00 PER PERSON**

**LOCATION: AT THE WASATCH MOUNTAIN CLUB LODGE**

# We'll Give You the Deed...

## to 529,000 Acres



**KIRKHAM'S** wants to give you the deed to over ½ million acres of winter wilderness by giving you the finest advice on cross country ski gear for Touring, Skating, or Telemarking. It's all within your reach.



**TOURING** lets a person of any age or ability get out of the house and into nature, exercise, family and friends. Kirkham's quality wood-core touring packages are well priced, yet durable. We'll help make skiing even easier with expert advice.



**TELEMARKING** lets you experience the winter outdoors in the best way possible by going virtually anywhere without restriction. You'll appreciate the glorious Wasatch backcountry with ease. Kirkham's people understand telemarking because they do it! Our quality selection ranges from very affordable to ultimate performance metal edged skis from TUA and Kazama.



**SKATING** is the best way for a beginner or avid cross trainer to stay in shape during the winter. It's fun, fast, and aerobic. Kirkham's staff has tested all the top skating skis and their knowledge can put you into the right ski the first time. Our selection of skating skis is the largest in Salt Lake. We offer the superior SDS and NNN binding systems with boots from Adidas and Alpina.



3125 South State 486-4161 Open Mon.-Thurs. 9:30-8:00 p.m., Fri. till 9:00, Sat. till 6:00

## EVENTS AT A GLANCE

### SKI TOURS

#### January

1 Lake Mary	12 Telemark	13 Lake Blanche	20 Quarry Mt.	27 Unitas
5 Soapstone Basin	12 Catherine's Pass	19 Avalanche Clinic	20 Leaders Choice	27 Desolation Lake
5 Willow Lake	12 Wolverine	19 Millcreek Road	20 White Baldy	27 Cutler Ridge
5 Powder Park	12 Guardsman	19 Upper Greens	20 Leaders Choice	
5 Cardiff	13 Toll Canyon	19 Powder Park #2	26 Lower Days	
6 Ski Clinic	13 White Pine	19 Bountiful Peak	26 Red Pine	
6 Desolation Lake	13 Teach & Tour	19 Leader's Choice	26 Reynolds Peak	
6 Reynolds Peak	13 Big Elk Lake	19 Leader's Choice	26 Millcreek	
6 Thunder Mt	13 Red Pine	20 Greens Basin	27 Silver Fork	

#### February

2 Scotts Pass	9 Powder Skiing	10 Leaders Choice	17 Wolverine Bowl
2 Days Fork	9 Empire Canyon	16 White Pine	
2 Wolverine	9 Bear Trap	16 Greens Basin	
2 Willow Lake	9 Downhill	16 Snow Basin	
3 Millcreek	9 Telemark	16 Mill D	
3 Willow Peak	10 Catherine's Pass	16 Teach/Tour	
3 Grizzley Gulch	10 Red Pine	17 Norway Flats	
3 Leader's Choice	10 Desolation Lake	17 Broads Fork	

### SNOWSHOEING

#### January

6 Leader's Choice	26 Bountiful Hills
13 Dog Lake	
20 Red Pine	

#### February

9 Ogden Canyon
----------------

### SOCIALS

#### January

1 New Year's Party
12 Nominations Banquet
13 Glasnost Party
19 Old Time Dance
27 Spaghetti Dinner

#### February

9 Valentine's Day Social
--------------------------

### MISCELLANEOUS

#### January

12 Ice Climbing--Provo Canyon
-------------------------------

#### February

7 Pool Practice
-----------------

### VOLLEYBALL

(Monday evenings at 6:30 P.M. at Highland High School, 2166 S 1700 E, except 12/24 & 31)

**PROSPECTIVE MEMBERS** are welcome on ALL club activities, with these exceptions:

- 1) Thursday Evening Hikes are for members only. However, prospective members may attend if the hike is their second qualifying activity for membership and they submit their dues check and application form to the leader before the hike.
- 2) Boating trips are for members. However, prospective members may attend a weekend trip if they use the trip as their qualifying activity (each day counts as one activity.)
- 3) A trip leader may choose to limit a trip to members, especially if there is limited space.

### WMC SKI TOUR RATINGS EXPLAINED:

**NTD (Not too difficult):** Terrain is mostly gentle. Participants should be able to do a kick turn, snowplow, and descend a slope by traversing. Usually no avalanche danger. **MOD (Moderately difficult):** Proficiency climbing and descending intermediate slopes is required. Poles and shovels may sometimes be suggested or required. If a pole is carried, this implies knowledge of how to search for a buried companion. **MSD (Most difficult):** Strenuous. Usually involves long ascents, steep or narrow descents. Poles and shovel always required.

## CLUB ACTIVITIES

---

Only activities approved by the appropriate WMC Director can be listed in the Club Activities section of the *Rambler*. Send your proposed activity, for approval, to the hiking, rafting, skiing, etc., director for inclusion in their activity schedule. Those activities sent directly to the *Rambler*, without approval, will not be published.

---

Dec. 31-Jan. 1  
Mon.-Tue.

CELEBRATE NEW YEARS AT THE LODGE. Hostesses will be Barbara Jacobsen (943-3715) and Leslie Woods (484-2338). The lodge will be open from 6:00 P.M. December 31 until 4:00 P.M. January 1. Activities planned:

NEW YEARS EVE DINNER AND DANCING AT THE LODGE. Potluck dinner starting at 7:30 P.M. with dancing to a "Boom Box" SO BRING YOUR FAVORITE TAPES. We could not get Rob Snow. Barb and Leslie will be staying overnight again. Why not you too in case you've had a little too much liquid refreshment! Also, bring your favorite card games.

NEW YEAR'S DAY. Downhill skiing, cross country skiing, snowshoeing, and Wick Miller's "CRACK OF NOON" ski tour are a few of the possibilities for fun.

Jan. 1  
Tue.

HANGOVER SKI TOUR TO LAKE MARY. (NTD) Wick Miller (649-1790) has once again consented to lead the tour. It leaves at the crack of noon at the Hillside Plaza Shopping Center (7000 South 2300 East). This will be at a relaxed pace but not for the rank beginners.

Jan. 5  
Sat.

UINTAS SOAPSTONE BASIN SKI TOUR. (NTD) Join Dennis Tolboe (485-6023) at the Regency Theater/KMart parking lot on Parleys Way at 8:30 A.M.

WILLOW LAKE AND BEYOND SKI TOUR. (MOD+) An easy tour to the lake but then only Bob Wilson (277-7446) knows where he will go next. This will be a fast paced tour. Pieps and shovels required and skins preferable. Meet at the Hillside Plaza Shopping Center (7000 South 2300 East) at 9:00 A.M.

POWDER PARK SKI TOUR. (MOD) Join Martin Gregory (582-2403) for some great snow at one of the best places to practice telemark turns. Meet at the Hillside Plaza Shopping Center (7000 South 2300 East) at 9:00 A.M. Pieps and shovels required and skins preferable.

CARDIFF FROM ALTA SKI TOUR. (MSD) Leaders choice if powder better somewhere else. Call Alan Gavere (486-1476) to register and to give assistance with the car shuttle. Pieps and shovels required and skins preferable. Meet at the mouth of Big Cottonwood Canyon at 8:15 A.M.



Jan. 6  
Sun.

AUDREY KELLEY MEMORIAL SKI CLINIC (NTD-) Audrey gave of her time and skill every year since Jan 3, 1986 to help beginning skiers learn the art of cross country skiing. The tradition continues. The following was taken from the first writeup in 1986: "Any member of the Club (or will-be members) who wants to learn to ski should be at the Regency Theater Parking Lot on Parleys Way at 9:00 A.M. Someone will be at the meeting place to direct the group to Audrey and Don's beautiful home at Timberline near Park City. This will be a wonderfully supportive "home-hearth-hot toddy" ski beginning. Fond memories of a magic day are a certainty" All skiers and to-be skiers are invited. Park on the south side of the road and hike into Timberline from here. Call Norm Fish (964-6155) if needed. (Instructors and help with the food are needed. Contact Norm Fish 964-6155).

DESOLATION LAKE VIA MILL D SKI TOUR. (NTD+) Desolation Lake is at the end of a long, easy, and gradual climb through several meadows along a well used trail. Join Val Naef (255-7562) at the Hillside Plaza Shopping Center (7000 South 2300 East) at 9:00 A.M. Pieps and shovels advisable but not required and skins preferable.

REYNOLDS PEAK FROM MILL D SKI TOUR. (MOD) Join David Morris and Teresa Overfield (359-6274) at the Hillside Plaza Shopping Center (7000 South 2300 East) at 9:00 A.M. Pieps and shovels required and skins preferable.

THUNDER MOUNTAIN - BELL CANYON SKI TOUR. (MSD) Meeting time will be early so call George Westbrook at 942-6071 for place and time. There is a car shuttle involved.

LEADER'S CHOICE SNOWSHOE TOUR. (NTD) Leader Leah Mancini (582-7912) plans an enjoyable day out in the snow of a nearby canyon. Leah will meet snowshoers at the Olympus Hills Mall near the old Bagel Nosh at 9:00 A.M.

Jan. 7  
Mon.

VOLLEYBALL. 6:30 P.M. at Highland High School (2166 South 1700 East). Follow the signs near the gymnasiums. The cost is \$1.00. For information call Doug at 269-1833.

Jan. 12  
Sat.

SKI DAY AND TELEMARCK PRACTICE AT THE LODGE. Lodge open at 9:00 A.M., telemark lessons at 9:30 A.M. Purchase lift tickets in advance. Demo skis will be available. Pieps refresher at about 4:00 P.M. Bring your own Pieps. Walt Haas (534-1262).

CATHERINE'S PASS FROM ALBION BASIN SKI TOUR (NTD) This will be a slow leisurely pace up a very popular summer hiking trail where under feet of snow the flowers of Albion Basin still bloom. And if you believe that one, join John Shavers (359-3838) at the Hillside Plaza Shopping Center (7000 South 2300 East) at 9:00 A.M. Picking wild flowers is allowed on this tour.

WOLVERINE AND BACK TO THE LODGE SKI TOUR (MOD+) Normally a MOD, but Peter Hansen (583-8249) makes it a +. Anyone that can run between Twin Peaks in 2 minutes has to be a +. Join Peter at the Hillside Plaza Shopping Center (7000 South 2300 East) at 9:00 A.M. Pieps and shovels required and skins preferable.



Jan. 12  
Sat

GUARDSMAN TO CLAYTON PEAK DOWN HIDDEN VALLEY SKI TOUR. (MOD) Join Arthur Griffin (363-1996) on this seldom skied route (maybe will discover a new way to do this tour). Meet at the Hillside Plaza Shopping Center (7000 S. 2300 E.) at 9:00 A.M. Pieps and shovels required and skins preferable.

MSD SKI TOUR. Leader needed.

NOMINATIONS BANQUET. Join us at The Stuft Noodle, 4700 South & 900 East (Ivy Place), 6:00 P.M., for the annual Nominations and Awards banquet. Dinner choices are Paprika Chicken and Halibut Steak. for more information see the announcement elsewhere in this issue or call Mark Hutchison, 355-3227.

ICE CLIMBING IN PROVO CANYON. We will be climbing on a wide water fall that offers top-roped ice climbing of all levels of difficulty and excellent opportunities for photographs. For meeting time and to discuss your experience and equipment call John Veranth (278-5826).

Jan. 13  
Sun.

SUNDAY SOCIAL -- THE RUSSIANS ARE COMING -- GLASNOT PARTY. Help us celebrate the Cold War thaw with several Russians who are making a new life in Salt Lake, by joining us for a January thaw hearth warming. Bring an Eastern European dish to share, BYOB, BYO cup, to 1819 Kensington Avenue (1500 South and 1800 East). The party starts at 6:00 PM. For more information, call Barbara Taylor (484-7558) or Christine Allred (261-8183).

DOG LAKE SHOWSHOE TRIP (NTD). Go with Leigh Cowley (467-9802) up Mill D North to Dog Lake on snowshoe. Be at the Hillside Plaza Shopping Center (7000 South 2300 East) at 9:00 AM for this pleasant trip through the aspens.

TOLL CANYON SKI TOUR. (NTD) An Audrey Kelley favorite. Celebrate this annual event after the Audrey Kelley Memorial Ski Class with J. Dewell (295-2754). Meet at the Regency Theater/KMart parking lot on Parleys Way at 9:00 A.M.

WHITE PINE IN PARK CITY SKI TOUR. (NTD) Ski a pretty bowl and may be see the helicopter from Park West take off. Join Leslie Mullins (363- 0560) at 9:00 A.M. at the Regency Theater/KMart parking lot on Parleys Way.

TEACH AND TOUR SKI TOUR. (NTD-) The touring committee will have several basic classes throughout the season to help new skiers with basic skills. This will be a tour on a gentle grade and will require the ability to walk on the skis. Join Norm Fish (964-6155) and Dauphne Randell (485-1483) at the Hill side Plaza Shopping Center (7000 South 2300 East) at 10:30 A.M.

BIG ELK LAKE IN THE UINTAS TURTLE SKI TOUR. (MOD) This tour will be at a slow pace led by Charles Leslie (364-2486). We will try to make it to Big Elk Lake if there are enough people to break trail. Meet at the Regency Theater/ KMart parking lot on Parleys Way at 5:00 A.M. (that is Midnight + 5 hours).

RED PINE SKI TOUR. (MOD+) Ski along this popular summer trail with Hank Winawer (277-1997). Join Hank at the Hillside Plaza Shopping Center (7000 South 2300 East) at 9:00 A.M. Pieps and shovels required and skins preferable.

Jan. 13  
Sun.

LAKE BLANCHE SKI TOUR. (MSD) Dennis and Karin Caldwell will lead this classic tour. The meeting place will be at Dennis and Karin's house, so call for meeting time (942-6065).

Jan. 14  
Mon

VOLLEYBALL. 6:30 P.M. at Highland High School (2166 South 1700 East). Follow the signs near the gymnasiums. The cost is \$1.00. For information call Doug at 269-1833.

Jan. 19  
Sat.

AVALANCHE CLINIC. The location will be at the H&R Block Building, 177 East 900 South. Enter from 9th south entrance and the Clinic will be in the basement. Park on the North side of the building. Time will be 8:00 A.M. to about 3:00 P.M. Morning session inside and the afternoon Pieps practice at the Spruces. See article in this issue for more information.

MILLCREEK ROAD (BROWN SNOW SPECIAL) SKI TOUR. (NTD) No-wax touring skis are recommended for this tour. No K-9s please. Join Louise Rausch (328-1290) at the Hillside Plaza Shopping Center (7000 South 2300 East) at 9:00 A.M.

UPPER GREENS BASIN SKI TOUR. (MOD) Help with Pieps practice at the afternoon session of the avalanche class and get a ride down after the session ends. Piep with Allan & Ilka Olsen (272-6305). Meet at the Hillside Plaza Shopping Center (7000 South 2300 East) at 9:00 A.M. Pieps and shovels required and skins preferable.

POWDER PARK #2 SKI TOUR. (MOD) Practice Pieping along with a few telemarks with George Swanson (466-3003). Walt needs Pieping instructors, (Ortovox instructors needed also) for the afternoon session. Meet at the Hillside Plaza Shopping Center (7000 South 2300 East) at 9:00 A.M. Pieps and shovels required and skins preferable.

THE BOUNTIFUL PEAK AREA SKI TOUR (MOD) Drive up Farmington Canyon, so 4 wheel drive or front wheel drive vehicles required. Car pooling preferred. Piep and shovels NOT required. Join Kenny Strong (546-1344) at the Farmington Courthouse in the center of town at 9:00 A.M.

LEADER'S CHOICE SKI TOUR. (MSD) Search for powder and hot tub afterwards. Call Allen Gavere for meeting place and time at 486-1476.

LEADER'S CHOICE SKI TOUR. (MSD) Register with George Westbrook (942-6071) by the night before the trip. There is usually an early start.

OLD TIME COUNTRY DANCE AT THE LODGE. It's time to dust off those old point toed boots and practice your best YA-HOO's and come up to the lodge for an evening of traditional country dance with Bart Bartholoma. No experience needed! Everyone will be included, so a partner is not required to attend. Bring a munchie to share at 7:00 PM. Calling starts at 8:00 PM. Cost \$4.00 per person. Please recall that there will be snow between your car and the lodge, so bring/wear clothing for this eventuality. Bring your own drinks as none will be provided.

Jan. 20  
Sun.

GREENS BASIN SKI TOUR. (NTD) Take a leisurely pace up through the pines with Christine Allred (261-8183). Meet at the Hillside Plaza Shopping Center (7000 South 2300 East) at 9:00 A.M.

QUARRY MOUNTAIN IN PARK CITY SKI TOUR. (NTD) Join Bob Wright (649-1228) on this easy tour. Bob also invites all those that need to relax to join him in the hot tub afterward. Meet at his house 3886 Holiday Curve, Park City, at 1:00 P.M.

LEADER'S CHOICE SKI TOUR. (MOD) Join Marv Hamilton (363-2083) to some unknown location. Meet at the Hillside Plaza Shopping Center (7000 South 2300 East) at 9:00 A.M. Pieps and shovels required and skins preferable.

LEADER'S CHOICE SKI TOUR (MSD). Call Dave Smith (278-6515 ) by the night before the trip. There is usually an early start.

RED PINE LAKE SHOWSHOE TOUR (MOD). Join Tom Walsh (969-5842) on snowshoes to experience this favorite summer hike in winter. He will meet you at 9:00 AM at the Hillside Plaza (7000 South 2300 East).

Jan. 21  
Mon.

NO VOLLEY BALL. Next volleyball session is January 28. For information call Doug, 269-1833.

Jan. 26  
Sat.

LOWER DAYS FORK SKI TOUR (NTD). Trudy Healy (943-2290) will take a leisurely pace up through the pines to some comfortable spot for lunch. Join her at the Hillside Plaza Shopping Center (7000 South 2300 East) at 9:00 AM. Back-country skis and boots (not track skis) are strongly suggested.

RED PINE (AREA) SKI TOUR (MOD). Larry Larkin (486-9060) will be looking for good telemarking in the trees somewhere in the Red Pine drainage. Meet Larry at the Hillside Plaza Shopping Center (7000 South 2300 East) at 9:00 AM. Pieps and shovels required and skins recommended.

REYNOLDS PEAK SKI TOUR (MOD). Tom Silberstorf (467-5734) says this will be a fun trip for everyone. **Be sure you have the boots to handle an MOD tour.** Tom has had problems with tourees using inadequate boots in the past. Meet Tom at the Hillside Plaza Shopping Center (7000 South 2300 East) at 9:00 AM. Pieps and shovels required and skins recommended.

MOONLITE IN MILLCREEK SKI TOUR (NTD). Howl at the moon with your dog. Join N. Dauphe Randall (485-1483) and Alain Bergeron (538-0201) on this special moonlite tour. Dogs are welcome. Meet at 6:30 PM at the old Bagel Nosh parking lot in the Olympus Hills Mall area.

BOUNTIFUL FOOTHILLS SNOWSHOE TOUR (NTD+). Want to observe deer and other wildlife in the foothills above Bountiful? Clint Lewis (295-8645) will lead snowshoers there and will offer cocoa and refreshments afterwards at his home. Join Clint at Lee's Cafe (Bountiful 5th South Exit) at 9:30 AM.

Jan. 27  
Sun.

SILVER FORK SKI TOUR (NTD). Join Brian Barkey (work 581-5768) for an easy tour to the mine and possibly a short distance beyond it if conditions are good. Meet Brian at the Hillside Plaza Shopping Center (7000 South 2300 East) at 9:00 AM. Backcountry skis and boots (not track skis) are strongly recommended.

UNITAS SKI TOUR (MOD-). Wick and Joanne Miller (1-649-1790) will lead a tour into CO-OP Creek or Taylor Canyon, depending on snow conditions. Expect mostly trail skiing into beautiful country. Pieps and shovels not required. Carpool at KMart/Regency Theater parking lot on Parley's Way at 8AM and meet the leaders at Park City junction McDonalds around 8:45 AM. Joanne will lead the slower group. Dogs welcome but call Wick to add your dog to the list. Party after with Vince Desimone (see his writeup on this page).

DESOLATION LAKE SKI TOUR (NTD+). Sandra Taylor and Russell Wilhelmsen (583-2306) will lead this longer but gradual (except for the hill near Dog Lake) tour to Desolation Lake. Join them at the Hillside Plaza Shopping Center (7000 South 2300 East) at 9:00 AM. Backcountry skis and boots (not track skis) are strongly recommended.

CUTLER RIDGE SKI TOUR (OGDEN) (MOD). Climb Cutler Ridge to the summit of Ben Lomand (3000 ft. vertical). Ski powder on north facing slopes. Second leader will guide skiers who do not wish to ski from summit (MOD). This is a repeat of a very successful tour lead last year. Meet leaders Fred Duvall and his assistant at North Ogden Pleasant View exit from I-15 (2nd exit north of 12th street) at 8:00 AM. Please register with leader in case of last minute changes due to weather (work 863-3182, home 782-5565).

SUNDAY SOCIAL SPAGHETTI DINNER. Enjoy fellowship by the fire and Vincenzo's Italian cuisine. Last year's Virgin Islands' trip slides and pictures will be available for those interested. Next July's Caribbean trip will also be discussed. Party starts at 6PM, cost \$4.00, chocolate and coffee provided. Bring any other drinks you wish. Those wishing to talk sailing or concluding another activity in the area are welcome to come early. This is Film Festival weekend in Park City. Directions: take the Park City exit from I-80. Turn left at the Ridgeview sign. Go to the crest of a hill and turn left at the gravel road. Go up the hill to the "T" and turn right. Look for the flags.

Jan. 28  
Mon.

VOLLEYBALL. 6:30 P.M. at Highland High School (2166 South 1700 East). Mon. Follow the signs near the gymnasiums. The cost is \$1.00. For information call Doug at 269-1833.

Feb. 1-3  
Fri.-Sun.

CROSS COUNTRY SKI TOUR WEEKEND. A repeat of last year's highly successful tour at Cedar Breaks National Monument and the Dixie National Forest. Join Ken Kraus (363-4186) on this fun trip.

Feb. 2  
Sat.

SCOTTS PASS WITH OPTION SKI TOUR (NTD+). Join Gary Whitney (484-4020) on this tour to Scotts and possibly on to the ridge west toward Solitude depending on snow conditions. Meet Gary at the Hillside Plaza Shopping Center (7000 South 2300 East) at 9:00 AM. Pieps and shovels required and skins preferred.

DAYS FORK INTO BASIN SKI TOUR (MOD). Mike Hendrickson (942-1476) will lead this tour into the basin of Days Fork. Look for some good powder on the open slopes. Join Mike at the Hillside Plaza Shopping Center (7000 South 2300 East) at 9:00 AM. Pieps and shovels required and skins recommended.

WOLVERINE PEAK SKI TOUR (MOD). Ski with Bob Wilson (277-7446) to the peak and hopefully have good snow for the trip down. Join Bob at the Hillside Plaza Shopping Center (7000 South 2300 East) at 9:00 AM. Pieps and shovels required and skins recommended.

WILLOW LAKE SNOWSHOE TOUR (NTD). Ann McDonald (277-3870) will lead an easy-paced trip through the aspens to this beaver dammed pond. Bring a swim suit and join Ann afterwards in her hot tub. Meet at the Hillside Plaza Shopping Center (7000 South 2300 East) at 9:00 AM.

Feb. 3  
Sun.

MILLCREEK FROM GATE SKI TOUR (NTD). This tour will start at the gate and go as far as you want up the road. Call Louise Hollander (277-1416) for meeting time and place. Backcountry skis and boots (not track skis) are strongly suggested.

ANNUAL WILLOW PEAK AND BEYOND SKI TOUR (MOD). Powder skiing in the trees. Join Theresa Overfield and David Morris (359-6274) for this annual event past Willow Lake (across from Solitude) and on to the ridge. Join Theresa and Dave at the Hillside Plaza Shopping Center (7000 South 2300 East) at 9:00 AM. Pieps and shovels required and skins recommended.

GRIZZLY GULCH (PHASE 1) SKI TOUR (NTD). Join Tom Walsh (969-5842) for phase I of this fairly easy tour up Grizzly Gulch to the open slopes below Twin Lakes Pass. Survivors can progress to phase 2 at the Canyon Inn for refreshments and tales of the big head plant on the way down. Join Tom at the mouth of Big Cottonwood Canyon at the lower end of the Parking lot at 9 AM. Backcountry skis and boots (not track skis) are strongly suggested.

LEADER'S CHOICE SKI TOUR (MSD). Call Dave Smith (278-6515 ) by the night before the trip. There is usually an early start.

Feb. 4  
Mon.

VOLLEYBALL. 6:30 P.M. at Highland High School (2166 South 1700 East). Mon. Follow the signs near the gymnasiums. The cost is \$1.00. For information call Doug at 269-1833.

Feb. 7  
Thur.

POOL PRACTICE. 7:00-9:00 PM at Taylorsville High School (5225 South Redwood Road) at the pool. Cost is \$5.00. For information call Janis at 486-2345.

Feb. 9  
Sat.

POWDER SKIING ON A MODERATE SLOPE SKI TOUR (NTD). Jay Jones (363-3696 or 466-5555), our club member best known for teaching yoga, will lead a tour to find powder skiing on the moderate slopes off the Dog Lake/Desolation Lake Trail. Meet Jay at the Hillside Plaza Shopping Center (7000 South 2300 East) at 9:00 AM. Pieps, shovels and skins recommended. Backcountry skis and boots (not track skis) are strongly suggested.

EMPIRE CANYON AT PARK CITY SKI TOUR (MOD). Ski at Park City at the best possible price, \$0. Join Leslie Woods (484-2338) for this tour just outside of the Park City ski area boundary. Meet at the Regency Theater/KMart on Parleys Way at 9:00 AM or at the Park City junction McDonalds at 10:00 AM.

BEAR TRAP SKI TOUR (MOD+). Join Rick McClain (Work 487-2112) for this upper end MOD overlooking Desolation Lake. Meet at the Hillside Plaza Shopping Center (7000 South 2300 East) at 9:00 AM. Pieps and shovels required and skins recommended.

DOWNHILL SKIING AT PARK CITY (MOD). For those of you who own a season pass or would like to spend big bucks for a lift ticket! All levels welcome! We will break up into groups according to skiing ability and meet for a picnic lunch near or in the lodge; and also get together at the bar for a beverage or snack after skiing. Meet Lillane Schumann (home 561-3756, work 565-2442) at the plaza ticket counter at 9:00 AM.

TELEMARK CLINIC (MOD). Tentative plans to ski at Alta in the Albion area. Meet at the Hillside Plaza Shopping Center (7000 South 2300 East) at 9:00 AM. Instructors are needed. Look for more details in the February Rambler.

THE SECOND ANNUAL AS-CLOSE-AS-WE-COULD-GET-TO-VALENTINE'S-DAY-SOCIAL. This will be a repeat of last year's affair complete with Belgian Beer stew, chicken and homemade noodles and Laurie Leavitt's marvelous selection of desserts. We'll start at 6:30 PM and the cost is \$3.00 for dinner. Place: Leslie Mullins' house at 829 East 900 South. Bring your own beverages and cups and we will again provide the kisses. Questions?? Call 363-0560.

OGDEN CANYON SNOWSHOE TOUR (NTD+). Ken Workman (1-825-3448) plans to take snowshoers to Powder Mountain if conditions are right. Meet Ken at 9:30 AM at the Rainbow Gardens Cafe at the mouth of Ogden Canyon. Call Doug Stark (277-8538) for carpool information from the Salt Lake area.

Feb. 10  
Sun.

DESOLATION LAKE SKI TOUR (NTD). The team of Allan and Ilka Olsen (272-6305) will lead this longer tour to Desolation Lake. Meet at the Hillside Plaza Shopping Center (7000 South 2300 East) at 9:00 AM. Skins recommended. Backcountry skis and boots (not track skis) are strongly suggested.

CATHERINE'S PASS SKI TOUR (MOD). Clint Lewis will find good skiing on the moderate slopes above Catherine's Pass from the Albion Basin side and on to Supreme. Join Clint (home 295-8645, work 322-8318) at the Hillside Plaza Shopping Center (7000 South 2300 East) at 9:00 AM. Pieps and shovels required and skins recommended. Also \$2.00 and safety straps for riding up the lift.

Feb. 10  
Sun.

RED PINE SKI TOUR (MOD). Join Monty Young (255-8392) on a tour to this popular summer spot. Trip leaves from the Hillside Plaza Shopping Center (7000 South 2300 East) at 9:00 AM. Pieps and shovels required and skins recommended.

LEADER'S CHOICE SKI TOUR (MSD). Register with Rolf Dobbling (467-6636) by the night before the trip. There is usually an early start.

Feb. 14  
Thur.

POOL PRACTICE. 7:00-9:00 PM at Taylorsville High School (5225 South Redwood Road) at the pool. Cost is \$5.00. For information call Janis at 486-2345.

Feb. 16  
Sat.

WHITE PINE LAKE SKI TOUR (MOD-). Join Janis Huber (486-2345) for this popular tour, part way to the lake. There should be some excellent open areas for some powder turns. Meet at the Hillside Plaza Shopping Center (7000 South 2300 East) at 9:00 AM. Pieps, shovels and skins recommended. Backcountry skis and boots (not track skis) are strongly suggested.

UPPER GREENS BASIN SKI TOUR (NTD+). Bill Rosqvist, last seen climbing the Grand Teton in December, will lead this tour to beautiful Upper Greens. Join Bill (295-0458) at the Hillside Plaza Shopping Center (7000 South 2300 East) at 9:00 AM.

MILL D TO LITTLE WATER SKI TOUR (MOD). Myron Herrick (561-0472) will lead the group to the top of Little Water Peak. Meet at the Hillside Plaza Shopping Center (7000 South 2300 East) at 9:00 AM. Pieps and shovels required and skins recommended.

CROSS COUNTRY TRAILS FROM SNOW BASIN SKI TOUR (MOD). After tour, will take a short trip to a nearby cabin for refreshments. From SLC take (new) Trappers Loop Road to Snow Basin parking lot, meet at 10:00 AM. Please register with leader Gibbs Smith (work 544-9800, home 544-0129).

TEACH AND TOUR SKI TOUR (NTD-). This will be the last class for this season. The tour will go on a gentle grade and will require the ability to walk on the skis. Join Norm Fish (964-6155) at the Hillside Plaza Shopping Center (7000 South 2300 East) at 9:00 AM.

Feb. 15-18  
Fri.-Mon.

CROSS COUNTRY SKI AND SNOWSHOE WEEKEND at the north rim of the Grand Canyon. Organized trip with snow transportation and staying in a yurt or lodge. Meals available. Reasonable rates. Contact Christal Sysak (943- 0316). Register early.



Feb. 17  
Sun.

NORWAY FLATS UNITAS SKI TOUR (NTD). Repeat of an earlier tour that was cancelled due to lack of snow. Ken Kraus (363-4186) will lead this tour to one of his favorite trails in the Unita foothills, 11 miles east of Kamas. Meet at the Regency Theater/KMart parking lot on Parleys Way at 8:30 AM. Backcountry skis and boots (not track skis) are strongly suggested.

BROADS FORK SKI TOUR (MOD). Arthur Griffin (363-1996) will lead this tour to the basin, with long north-facing slopes on the return. Pieps and shovels required and skins recommended or good wax. Meet Art at the Hillside Plaza Shopping Center (7000 South 2300 East) at 9:00 AM.

WOLVERINE BOWL SKI TOUR (MOD). The tour will start at the Brighton Millicent lift to gain faster access to (hopefully) superb skiing in the bowl. Meet jim Piani (272-3921) at the Hillside Plaza Shopping Center (7000 South 2300 East) at 9:00 AM. Pieps, shovels, and skins required.

Feb. 21  
Thus.

POOL PRACTICE. 7:00-9:00 PM at Taylorsville High School (5225 South Redwood Road) at the pool. Cost is \$5.00. For information call Janis at 486-2345.

Feb. 28  
Thur.

POOL PRACTICE. 7:00-9:00 PM at Taylorsville High School (5225 South Redwood Road) at the pool. Cost is \$5.00. For information call Janis at 486-2345.

## **FUTURE OUT OF TOWN ACTIVITIES**

JULY 1991 CARIBBEAN SAILING TRIP, 10 days on dates to be selected by those interested. Contact Vince Desimone (1-649-6805).

SEPTEMBER/OCTOBER 1991 GREEK ISLANDS SAILING TRIP, 15 days. Contact Vince Desimone (1-649-6805).

# CONSERVATION NOTES

---

By Keith Johnson

## LAND TRUST--AN IDEA WHOSE TIME HAS COME TO UTAH?

Two representatives from Trust for the Public Lands were in town a few weeks ago. They met with a few local people at Bear West office (remember, the planning consultant on the Wasatch Canyons Master Plan). Their purpose was to inform us and answer questions about Land Trusts---to plant the seeds of action. The action is to include organizing further exploratory discussions on the feasibility and advisability of instituting a private land trust which might achieve some of the goals of preserving a site or areas deemed by those involved as worthy and needing protection.

A land trust is a private non-Profit organization, operated by residents of a local community for the purpose of protecting, restoring or maintaining land, buildings or other real estate. The basic preservation tools available to these organizations include easements, tax deductible donations, exchanges and acquisitions. These are not membership organizations, often begin with a single simple project, and governing boards tend to include a diverse group of people rather than only conservationists.

Over 800 land trusts have been organized in local communities across the U.S. and Trust for the Public Lands (TPL) has been instrumental in the successful beginning of approximately 200 of those. TPL does not own, operate or direct these entities, but does provide technical assistance and the spark to empower local citizens to create their own organization.

Those who were in attendance at the first meeting agreed to meet again and examine the possibility further. Although we were a small group, there were varied opinions regarding the purpose and focus that a land trust might have. We were advised to broaden the composition of the group further and for each of us to invite one person to the next meeting, that person not being an environmentalist or activist.

## MEDIATION MEETING

7:00 P.M., January 10, 1991

The Wasatch-Cache National Forest, Salt Lake Ranger District will sponsor mediation meetings between Wasatch Powderbird Guides and winter backcountry users. The public is invited to attend the first meeting which will be held 7:00 - 9:00 p.m., January 10, 1991, at the East Mill Creek Library, 2266 East 3425 South.

The meeting will be the first in a series of three or more meetings designed to minimize conflict between Wasatch Powderbird Guides (helicopter skiing concessionaire) and winter backcountry users. The first meeting will be strictly organizational and no mediation will occur. Three people representing backcountry users and three people representing Wasatch Powderbird Guides will meet in subsequent mediation meetings. The backcountry users will choose, at the first meeting, three people to represent them at the subsequent meetings. The subsequent mediation meetings will be closed to the public.

The Forest Service hopes that the mediation meetings will achieve consensus between backcountry users and Wasatch Powderbird Guides on ways to minimize backcountry conflict and that sound management decisions can be based on the consensus. The Forest Service urges all backcountry users to participate in the organizational meeting January 10.

Those wishing further information may call Mike Sieg or Dough Abromeit at 524-5042 or visit the Salt Lake Ranger District office at 6944 South 3000 East, Salt Lake City.

## **Public Service Announcement**

### **Wilderness Forum**

The Utah Wilderness Association is sponsoring a series of meetings and lectures that will be of interest to Wasatch Mountain Club Members. Contact John Veranth 278-5826 or the UWA office 359-1337 for time and locations. Tentative topics and dates are:

January 10	Predator Control Issues
February 15	Workshop meeting with Forest Supervisors
March 23	All-day workshop on the Wildlife Manifesto
April 17	Lecture by Chris Mazer on Natural Systems
May	Weekend field workshop - BLM Wilderness.

---

---

### **UTAH'S PREDATORS**

Are you interested in Utah's predators? Are you concerned about policies designed to hound, bait and kill predators on public lands--predator "control"? If so, attend a workshop sponsored by the Utah Wilderness Association and Utah Audubon Society on Utah's predators. The event will be held on January 10 at 7:30 pm in the Unitarian Church, 569 South 1300 East, Salt Lake City. This event is free and open to the public

---

---

### **MEMBERSHIP RENEWAL**

By Julie Jones, Membership Director

It is almost time for all members to renew their membership in the Wasatch Mountain Club. Our membership year runs from March 1st to February 28th. Membership can only be renewed by using the Membership Renewal form that will be mailed to all members around the 1st of February, 1991.

The New Member Application Form on the back of The Rambler will not be accepted for membership renewals.

To accomplish this membership renewal task, I will need assistance from about 6 members to help assemble the renewal packages and to help mail them. I also need the use of a postal meter machine so that we won't have to lick 1300 stamps. If anyone has access to a postal machine that we can buy postage on and use, please contact me. If you are interested in helping with the renewal project one night near the end of January, please give me a call at 278-4753.

---

---

### **MEMBERSHIP MEETING**

**FEBRUARY 13, 1991**

**GART BROS.**

**5600 SOUTH 900 EAST**

**7:00 PM**

**AGENDA:**

**SPEAKER**

**ELECTION FOR BOARD OF DIRECTORS  
MORE INFORMATION FORTHCOMING IN THE FEBRUARY RAMBLER**

## **RADIO SHOW ABOUT UTAH OUTDOORS CONTINUES ON KALL RADIO**

### **"THE UTAH OUTDOOR SHOW"**

**PROGRAM SUBJECTS: Environmental  
Issues & Outdoor Recreation.**

**TIME: FRIDAYS at 6:05 after Paul Harvey's  
"Rest of the Story".**

**STATION: KALL radio 910 AM Stereo.**

#### **UPCOMING PROGRAMS:**

- Jan. 4     Skiing Show & Pheasants and Turkeys
- Jan. 11   Winter Wildlife & Flaming Gorge XC  
              skiing
- Jan. 18   Ice Fishing & Bison, Antelope and the  
              Range
- Jan. 25   Skiing Show & Boulder Mountain

- \* Also several programs examining BLM Wilder-  
ness areas and issues.
- \* Shows on other winter recreation will be heard.
- \* PROGRAM SUGGESTIONS WELCOMED!!!  
CALL Keith at 268-2453.

Recently, "THE UTAH OUTDOOR SHOW" aired its 16th week of broadcasts. I try to invite guests to talk about issues and activities that are happening during a particular week. The program hit the air just prior to the Utah hunting season and we did a number of programs on wildlife, but not merely from a hunter's point of view. If you happened to have tuned in during that time and decided that the program was not about hiking, bicycling, rafting, and the like, you reached the wrong conclusion. When warmth returns to the Wasatch the program will get into all those activities, and this winter some aspect of skiing (both x-c and downhill) will be on, at least, every third week. I just did a show on ski fitness and prior to that, one on back country skiing and avalanche safety.

## **"THE UTAH OUTDOOR SHOW" (continued)**

Just having a once-a-week, hour long talk show on a top ranked radio station is a good experience and a lot of fun. The objective is to inform as many people as possible about outdoor ethics and issues. Most often I try to cover two outdoor topics within a single show. The focus is either on environmental issues or outdoor recreation. Friday, 6:05 to 7:00 P.M. turns out to be one of those "two-edged sword" situations - because more folks are in transit than on other evenings, more are listening but most cannot call from their cars so there are fewer calls. The program director believes that KALL reaches approximately 5,000 listeners during the show's time slot and the station's signal reaches over half the state. Recently, I was in Loa and Bicknell and picked up KALL Radio.

Past programs included an environmental debate between Congressman Owens and Geneieve Atwood, a bison round up on Antelope Island, the Central Utah Project, the Strawberry River, and several wildlife and recreation topics.

---

## **SKI TELEMARK PARK FREE**

By Vince Desimone

The Telemark Park trail system adjacent to Deer Valley will be open to the public for nordic skiing this winter. Approximately five kilometers of trail will be groomed on a regular basis and five additional kilometers of trail will be open on a "back country basis." This trail will not be groomed but will be set. Trans-Wasatch hopes to operate a full service touring center next year, and the goal of this year's operation is to introduce the public to the trails.

The trail head is located on Queen Esther Drive in Nordic Village in Deer Valley. Skiers may call 649-2545 for current conditions.

# NOMINATIONS BANQUET

SATURDAY, JANUARY 12,  
1991

at

THE STUFF NOODLE  
4700 SOUTH 900 EAST  
(IVY PLACE)

## DINNER CHOICES:

Paprika Chicken, \$13.25

Halibut Steak, \$14.48

Dinners include: salad, bread, dessert,  
beverage, and setups.

BYOB

Social hour 6:00 P.M.

Nominations 7:00 P.M.

Dinner 8:00 P.M.

RESERVATIONS MUST BE MADE BY  
JANUARY 4, 1991

Send check, payable to Wasatch Mountain Club, indicating your choice of entree, to:

Marc Hutchison  
244 West 600 North, #129  
Salt Lake City, UT 84103

We can accommodate special needs.

Call Marc at 355-3227

## CANDIDATES FOR 1991-1992 GOVERNING BOARD

The Nomination Committee is pleased to present  
our candidates for the Governing Board:

President	Wick Miller
Secretary	Leslie Giddings
Treasurer	Cynthia Anderson *

### Directors:

Membership	Julie Ann Jones *
Boating	Randy Klein
Conservation	John Veranth
Hiking	(open)
Lodge	Vince Desimone *
	Kathy Klein (rentals) *
Mountaineering	Steve Walk
Publications	Magdaline Quinlan
	Leslie Mullins
Ski Touring	Norm Fish *
Information	Barbara Jacobsen *
	Aaron Jones *
Entertainment	Bill Loggins

Trustee	Alexis Kelner*
---------	----------------

\* Incumbent

## GOOD GEAR FOR WILD WINTER FUN FROM WILD ROSE

*YOU PROBABLY ALREADY KNOW WILD ROSE AS A GOOD GUY MOUNTAIN BIKE SHOP. BUT DID YOU KNOW WE HAVE A FULL SELECTION OF XC SKI GOODS AND WINTER CLOTHING? THE QUALITY PRODUCTS, SERVICE AND FRIENDLY PRICES YOU KNOW US FOR. DON'T HIBERNATE WHEN THE WEATHER TURNS COLD!*

**SKATE SKIS:** CUTTING EDGE PRODUCTS FOR WINTER FUN AND FITNESS FROM BLIZZARD, LANDSEM, ATOMIC, KNEISSL, SALOMON, ALFA AND REFLEX. COMPLETE SELECTION OF RACE WAXES AND TOOLS.

**TOURING:** QUALITY METAL EDGE GEAR FROM ATOMIC, ASNES, ASOLO, KNEISSL, VOILE AND ROTTEFELLA.

**CLOTHING:** TECHNICAL OUTERWEAR AND FUNCTIONAL ACCESSORIES FOR OUTDOOR WINTER ACTIVITIES

**SERVICE:** WE OFFER A FULL SERVICE REPAIR FACILITY. MOUNTING, TUNEUP, DELAM AND EDGE REPAIR, PLUS BASE PREPERATION AND RACE WAX SERVICE.

**DEMO & RENTAL:** METAL EDGE, SKATING AND LIGHT TOURING.

WILD ROSE  
702 THIRD AVE  
533-8671



**AVALANCHE CLASS**  
**SATURDAY, JANUARY 19, 1991**  
**8:00 AM**  
**H & R BLOCK BLDG.**  
**(177 East 900 South)**

An avalanche class will be held on Saturday, January 19, 1991 at the H & R Block Building located at 177 East 900 South. The class is sponsored jointly by the Wasatch Mountain Club and the Salt Lake Group of the Sierra Club, and is open to the public. An optional small donation will be requested, to help defray the expense of giving the class. If you don't have any money, come anyway.

The class is designed for persons who have no prior knowledge of avalanches. The topics which will be covered are:

- \* The physical properties of snow, and how the mountain snow pack changes over time.
- \* The effect of terrain on avalanche hazards.
- \* How to choose a route with minimum avalanche hazard.
- \* How to organize your skiing party so that the members are exposed to as little danger as possible.
- \* How to rescue somebody from an avalanche.
- \* How the Utah Avalanche Forecast Center makes its hazard predictions, and how to interpret the recording.

The class will consist of two parts. The morning half will be a lecture, which will start at 8 AM. Numerous slides and movies will be shown, including a home movie of a local skier being caught in an avalanche. In the afternoon, we will go into the mountains and practice rescue techniques on some appropriate snowy hillside.

You will not need skis or snowshoes, but be sure to dress warmly for the afternoon session. Make your own arrangements for lunch (e.g., bring it). The morning lecture will be taught in the basement, which is entered from the south side on 9th South.

Experience has shown that the major reason for avalanche fatalities is ignorance. There have been a number of deaths in recent years of people who were apparently unaware that they were in danger. There have also been a number of people rescued alive after being buried in avalanches; in most cas-

es, they lived only because their companions were prepared to deal promptly and efficiently with the situation. Therefore, this course is strongly recommended for all cross country skiers. It is designed to appeal to people who don't have the time or money to take one of the more extensive professional avalanche courses.

---

**3-DAY AVALANCHE**  
**WORKSHOP**  
**Presented by the**  
**Wasatch Mountain Club**

Special Backcountry Avalanche Hazard Evaluation Workshop. Oriented towards experienced mountaineers and backcountry skiers who like to ski "the steep and the deep," this comprehensive workshop will focus on answering these bottom line questions: Is the slope safe?; What data are you basing your hazard evaluation decisions upon?; and, Do better alternatives exist? Training will cover the latest snow stability evaluation techniques, terrain analysis, the mechanics of slab failure, snow metamorphism, route selection, avalanche hazard evaluation/decision making, and backcountry rescue.

Training will be intensive with 33-hours of training packed into three days. Emphasis will be on the practical application of key concepts relating to avalanche hazard evaluation and on learning by doing in the field.

\* 8 a.m., Saturday, January 25 through 6 p.m. Monday, January 27, 1991

\* **To register, contact: John Kortbawi, evenings, at 485-7916.**

\* Held at the Wasatch Mountain Club Lodge, Brighton, Utah, with field training in the surrounding mountains.

Course Materials will be sent to each participant upon registration. **Pre-registration is required and spaces are limited.**

Participants must be in good physical condition, able to ski or snowshoe uphill and down in variable terrain and snow conditions, and be prepared to remain in foul weather all day. Pieps, skins, shovels, and avalanche probes are required.

Cost including lodge fee and course materials is **\$125.00**. Make check payable to Wasatch Mountain Club. Special 10% discount to Wasatch Mountain Club members.

# From the Boating Director

---

by Jeff Barrell

Hey boaters, it's that time to start planning next season trips. Permits are due January 15 for Yampa and Lodore, January 31 for Idaho, and March 1 for the BLM rivers (Green and Colorado). This does not give us much time, so read on and mail out your envelopes today. I have proposed some dates for each river as a first choice below. Some rivers offer a second and third choice, so be creative. After being cold and wet on the Middle Fork, I have opted for a mid-June launch. If you have a better strategy for picking dates, be my guest; the important thing is to get the permit mailed ASAP.

Remember that the Dinosaur and Idaho rivers request a self-addressed/stamped envelope when requesting an application. Then you must mail in the application. Idaho rivers have a \$5 fee for each application. You can phone requests for BLM rivers, but you must call separate offices for Desolation, San Juan, and Westwater.

The permits are usually accompanied with lots of requirements and regulations. You can read these, but don't worry, the Club has all the equipment required to launch on any of these rivers. The BLM application asks some confusing questions:

Persons in group: we usually put 15 people to improve the odds and make a nice size group.

Make and model and number of Boats: The Club owns 14' Achilles and River Riders. How many we take depends upon how many go. This question is not important unless someone puts down an 8' KMART raft.

Proposed Campsites: The campsites are usually assigned at the put-in, so this question has no importance.

If you have questions concerning a permit, call the Boating director or one of the coordinators. Some of you may ask "What if I get a permit, do I have to lead the trip??" The answer is not necessarily. The Club can find trip leaders if we get the permits, but we must get the permits first.

Dinosaur National Monument  
(Yampa and Lodore)

Yampa: May 18 Lodore: Sept 14  
River Ranger Due: Jan 15  
Dinosaur National Monument (303) 374-2468  
PO Box 210  
Dinosaur, CO 81610

Idaho Rivers  
(Main Salmon, Middle Fork, Hells Canyon,  
Selway)

Main: July 21 Middle: June 17  
North Fork Ranger Station (208) 865-2383  
PO Box 780 Due: Jan 31  
North Fork, ID 83466

Desolation Canyon (Green River)

May 25, June 15, June 8  
BLM (801) 637-8193  
Price River Resource Area Due: March 1  
900 North 700 East  
Price, UT 84501

San Juan River

May 18, May 24, May 25  
BLM (801) 587-2141  
San Juan Resource Area Due: March 1  
PO Box 7  
(435 N. Main)  
Monticello, UT 84535

Westwater (Colorado River)

May 18, Sept 21, Sept 28  
BLM (801) 259-8193  
Grand Resource Area Due: March 1  
900 North 700 East  
Price, UT 84501

Grand Canyon (continued interest card by Jan 31)  
River Unit  
Grand Canyon National Park  
Box 129  
Grand Canyon, AZ 86023



## POOL PRACTICE

By Janis Huber

There was enough interest in continuing the pool practice. I thank all the people that called. I must also include the list of rules that were made last year:

1. No diving off the diving board.
2. Limit of 15 boats in the pool. One canoe is allowed.
3. Do not slide your boat in the pool. Place your boat in the pool.
4. No young children in the pool area. Children can participate in the pool practice, but they must have their own equipment.
5. You must provide your own equipment.
6. Your boat and equipment must be clean. I suggest visiting a car wash before you come. Believe me, I know how sandy my boat is after last fall's Westwater trips. There are no facilities to wash out your boats in Taylorsville!

Last year, everyone did a good job of respecting these rules and the comments from Taylorsville employees were very favorable.

So, here's the scoop:

Where: Taylorsville Senior High School pool,  
5225 South Redwood Road.

When: Thursday evenings, 7:00-9:00, beginning  
Feb. 7 and ending April 25.

Price: \$5.00

Limit: 15 boats in the pool (one of which can be a canoe).

Reservations: Not required. You can just show up. I must receive \$5.00 in advance if you want to reserve a spot.

Call me if you have any questions at 486-2345.

## GREEK & CARIBBEAN SAILING TRIPS PLANNED

by Vince Desimone  
Sailing Coordinator

Demand to repeat the highly successful 1990 Virgin Islands Caribbean sailing trip has been great. Now is the time to commit to next year's trip to assure your place in our fun in the sun. Sail boats have been reserved for July 1 thru 11, 1991.

Optional will be a two day pack trip in to the El Yunque Caribbean National Forest. This is a unique tropical rain forest in Puerto Rico.

A full color narrated video tape on the 1990 Virgin Islands trip was presented at the October 17 WMC annual meeting and is available for loan.

Cost for the 1991 trip is anticipated to be about \$600 plus transportation. The total cost of the 1990 trip was less than \$1200 including airfare. A \$25 nonrefundable deposit is required to hold your place on sailing trips so send your deposit now and avoid being one of the disappointed.

Greece is our destination for two weeks at the end of September and beginning of October 1991. We will spend 10 days sailing between the Greek Islands and the rest of the time touring Athens and other points of interest. The cost, including airfare at current rates, will be \$2200 plus food.

Contact Vince Desimone at P.O. Box 680111  
Park City, Utah 84068, or phone 1-649-6805  
concerning these trips.

### THE HEAT SOLUTION™

Reusable Heat Pack

Simply boil packet for  
six minutes to recharge.  
Also, distributor for one liter  
tight seal plastic bottles.

Frank Atwood  
Distributor  
WMC Member  
(801) 583-9990  
470 S. 1300 E. #1007  
SLC, UT 84102-3264

*Trying to bring a little more warmth into your life.*

## WASATCH MOUNTAIN CLUB VIRGIN ISLAND TRIP June 14 - 25, 1990

by Vince Desimone

NOTE: This article is a summary of the June 1990 Virgin Islands sailing trip taken by 24 WMC members. It is presented in a series because of length. To participate in the Summer 1991 Caribbean sailing trip or the Fall 1991 trip to the Greek Islands, contact Vince Desimone at 1-649-6805 (see article on previous page).

### SHIPS' LOG

June 14 - 15, 1990

Delta's Hospitality Suite was the gathering spot for trip members, well-wishers and some boy/girl friends left behind. Soft drinks, juices and munchies had been provided by the airlines for our enjoyment prior to flight time. Vince passed out packets of information on our destination as well as some sailing instructions. Also, each trip member received a round white cloth disk the size of a salad plate that held wide-brimmed sun hats with the Wasatch Mountain Club logo hand-painted in blue and green. Some of the men looked leery at the thought of wearing such a topper, and getting them back into the carrier pouch was tricky until someone demonstrated the proper twist and fold.

We finally arrived at Charlotte Amalie, St. Thomas, Virgin Islands in a drizzling rain. We immediately felt the change in climate from the dry, arid desert to the humid tropical heaviness of the Caribbean. A word or two about the airport in St. Thomas. The whole island is very mountainous, so either the airport was located in the only relatively flat spot or they had to level it out, which would have been quite a job. The buildings are reminiscent of World War II vintage hangars with corrugated walls and high ceilings with fans to move the air. One could almost imagine Pappy Boyington and some of his Flying Tigers strolling in, a picture that would come to mind often during this trip while patronizing some of the bars and restaurants throughout the islands.

Gathering all of our luggage -- no easy task with parcels, bags, backpacks, scuba gear and boxes of

foodstuffs -- quickly raised a sticky sweat. Luckily, air conditioned vans had been rented to get us from the airport to the Caribbean Yacht Charter docks on the eastern end of St. Thomas. Our vans took us on a picturesque ride through narrow streets where everyone drives on the left side of the road after the British fashion, and horns are used frequently as the vehicles speed up and down very steep, twisty roads. Our drivers pointed out many points of interest, interesting structures, reminders of Hurricane Hugo which hit the islands in October 1989, and treated us to a good many anecdotes on everything from island sea tales, politics and, of course, hurricane stories. One of the drivers had been at home in bed when Hugo hit and didn't even know about it until the next morning. When she looked out the door and saw what was happening, she pulled the mattress over her head and went back to sleep.

As we had planned to do most of our own provisioning, our first stop was the Pueblo grocery store. Each crew had met together in the states, weeks prior to departure, to decide their menu and divide up the work so the task could be accomplished in a well-organized and timely manner once we got to the store. Once there, armed with our many shopping lists, our "well-organized" plan seemed to evaporate as we all scurried around in mad confusion, two per shopping cart, looking for the next item on the list which always seemed to be at the opposite end of the store from whence we had just come. Bob and Barb hit the cookie isle first to pick up the Oreos and were the first ones to complete their mission, making sure there was plenty of syrup and at least two kinds of jam. Dave spotted the Sara Lee display and soon stockpiled the cart with cakes, pies and jello pudding cups. That crew certainly had an active "sweet tooth." Elizabeth hit the check-out counter with a full cart of ripe bananas. (Does that suggest a plan for some "monkeying around"? More later!)

While our boats had two refrigerator compartments, we were still worried about having a quantity of fresh meats or frozen items, so some of the crews opted for a quantity of canned foods. We found the prices to be generally about 10 percent higher than Utah and meats as much as double what we pay at home.

## WASATCH MOUNTAIN CLUB VIRGIN ISLAND TRIP (continued)

Two hours later, we all emerged laden with boxes and bags of food, drinks, munchies, etc. We had been careful to keep each crew's supplies partitioned as they were loaded into carts to be transported to our three vans, patiently waiting. However, one driver who seemed to be the "major domo" of our rented fleet had a very definite plan on where it all should be put. We were concerned that things were going to get all mixed up, but by some miracle or blind luck, it all worked out.

Our next stop was the CYC dock and our four ships: CHARISMA, WHITE WINDS, SEA YARN, and KOKOMO. They sat there waiting for us, all blindingly white in the sunlight, white boats with blue trim and black edging on the white sails. Below decks, all was highly varnished teak with cushioned surfaces in velvety materials. A marine band radio was provided for our communication and to get the latest weather reports, as well as the public radio and a tape deck for our entertainment. Though a few had thought to bring some tapes, when we tired of those we found the local offerings quite good. The radio supplied another form of "entertainment" when practical jokes were played -- such as requesting Bill Adams to offer up his trip sweetie, Val, au naturale as a bribe for being permitted to go on a commercial dive trip. (Val was not a diver.) Gee, Bill, how did that work out, anyway?

These center-cockpit ships were all well appointed, with fore and aft cabins, two heads with showers, a compact galley, lots of storage shelves, closets and cupboards, double sinks and two "reefers." The cockpit area had two long cushioned benches with a Bimini awning overhead for shade. In front of the wheel was a collapsible table which was the gathering spot for the evening "happy hour" after the night's anchorage had been settled -- a process that sometimes took longer than the voyage had.

Upon arrival at the dock, there was a real flurry of activity as the vans were unloaded, all the food was unpacked and stored, as well as our gear, clothing and personal items all neatly tucked away in the many storage compartments that we hoped we could find later on.

It is a no-no to use the ship's head while in port, so we were forced to use what was available on shore. The showers were constantly in use, although the humidity made you feel sticky again by the time you got your clothes back on. While our boats were luxurious, the dock facilities were in a far lower league -- small, not too clean and badly in need of repair. But then, Mt. Clubbers are a tough lot and our experience with low-level sanitary facilities has been tested by those at the Club Lodge in Big Cottonwood Canyon.

Once all was ship-shape, we walked over the hill to "For the Birds," a Mexican restaurant in a small cove. There was a miniature white sand beach, swaying palms, an outdoor patio, the sound of the surf and even a basket chair swaying invitingly from a tree in a cool tropical breeze. Dinner and drinks and dance music for those who still had the energy, and then back to the boats where we experienced our first night's sleep on board. It was at this point that our group of 24 truly became four separate crews, as follows:

**CHARISMA:** Captain Vince Desimone, 1st Mate Linda Desimone, and crew: Earl Cook, Linda Leigh, Ray Wenger and Christine Allred.

**WHITE WINDS:** Captain Lee Steorts, 1st Mate Mike Treshaw and crew: Elizabeth Morris, Mark Ryan, Ron Perez and Cynthia Anderson.

**SEA YARN:** Captain Dave Townsend, Crew: Ute Ruzuka, Leslie Woods, Bob Shearer, Tony Ackerman and Barb Dacenbruck.

**KOKOMO:** Captain Steve Morris, 1st Mate Shirlyn Morris and crew: Joan Proctor, Janet Friend, Bill Adams and Val Searle.

## WASATCH MOUNTAIN CLUB VIRGIN ISLAND TRIP (continued)

Saturday, June 16

Vince's not too dulcet voice awakened the four crews to a hectic morning. Cat fights and radios and a faulty gas alarm kept KOKOMO's crew awake most of the night, and Steve and Bill finally decided to pull the wires to disable the alarm so people could get some sleep. CYC sent two repairmen to fix the problem later in the morning. WHITE WINDS's crew opted for a free-for-all breakfast while Lee gave the first of several crash courses in sailing for those who had no real sailing expertise. On board KOKOMO, Shirlyn and Joan (two die-hard coffee lovers) soon discovered CYC's large coffee pot in a nearby building, definitely an improvement over the coffee made on board that seemed to take on a chlorine flavor.

Final check-out for the captains and other last-minute tasks seemed to take forever. The snorkelers dug into large wooden bins on the dock to pick out mask, snorkel and fins -- not always a matching set. Awkward human penguins flip-flopped on the dock looking ridiculous and stumbling over themselves until one of the group suggested walking backwards, which worked surprisingly well. Scuba divers had to check out rental gear and tanks. Many had brought their own equipment, but still had to have their air tanks checked and filled and secure extra tanks. Meanwhile, Leslie and Barb (SEA YARN) were checking out the cute CYC guy with the Boston accent and even agreed that a trade for Tony or Bob would be agreeable. We also had three windsurfers to be tied on deck which, along with the racks of air tanks, caused us to look somewhat like "boat people."

The day was overcast with scattered storm clouds as we finally left the CYC dock. We were all anxious to get going and we pulled out, all in a neat row, down the channel markers, heading for open water. SEA YARN was the last boat to leave its slip, but soon passed KOKOMO as they had gone aground in the silt. CYC sent a dinghy and a couple of men, and after much revving of the engines and steering back and forth, she was on her way to join the fleet. WHITE WINDS left Benner Bay without incident as Lee smoothly sailed (with the help of the motor) out into more open waters, put up the sails with minimal confusion and soon was making

up to 9 knots (7 more frequently) and a depth of 20-40 feet. Captain Dave, (SEA YARN) was a little apprehensive about his neophyte sailing crew and motored out towards the Two Brothers, and once in the main channel, hoisted sails for Trunk Bay to the music of Christopher Cross. KOKOMO had a bit of a trouble getting the main up. There were some red lines (jiffy reef) that couldn't be freed up for awhile, but eventually success. They passed up Vince who couldn't solve the same problem, but managed to make way all the same.

On board CHARISMA, Captain Vince was getting pretty frazzled and understandably so. In addition to being responsible for Charisma, he had final responsibility for the whole group of 24 people and four boats costing in the neighborhood of \$180,000 each. The captain of each boat had pre-qualified and there was at least one other person aboard with prior sailing experience. As for the remainder of the group, their experience came mostly from reading Two Years Before the Mast or seeing Mutiny on the Bounty in one of its variations.

Vince, and most likely the other captains, held their cool remarkably well as the less seasoned sailors among us blundered from time to time literally "learning the ropes." However, ropes are not ropes on board a ship -- they are sheets, halyards, painters, shrouds and other esoteric terms. There's no left and right or back and front either -- it's port and starboard, fore and aft. "Tail the dinghy" means to tie it up, and there is a proper way to tie knots -- none of that "granny" stuff here. Oh, and by the way, the word "Cay," meaning small island, is pronounced "Key."

What an exhilarating sport sailing is! Sun, wind, water, the smooth rush of the boat and a gentle rocking motion. Those of us with qualms about possible seasickness had prepared with applications of a quarter-sized patch of anti-motion sickness medicine. One patch behind the ear would keep the "wobblies" away for a three-day period. Christine used the patch, stayed up in the fresh air and focused on the horizon until sea legs developed while the rest of CHARISMA's crew didn't seem to need the extra help.

## WASATCH MOUNTAIN CLUB VIRGIN ISLAND TRIP (continued)

We sailed over to Trunk Bay on St. John which was absolutely beautiful with a half moon white beach and lush vegetation and tropical trees. It was just like being in a post card. SEA YARN was the first to arrive, set anchor and start lunch. Shirlyn was so anxious for a swim, she jumped in still wearing her shorts with a pocket full of money. Is that now "laundered" money or money "salted away" for later? After lunch, we went snorkeling along an underwater nature trail in a National Park. As we swam in the delightfully warm azure-colored water, Ute joined Christine to follow the trail markers anchored to the bottom that pointed to various coral and sea life indigenous to the locale.

With Leslie at the helm of SEA YARN, the fleet motored to the new anchorage at Leinster Bay. Right before the bay was a stone turret building which we later learned was the ruins of a sugar rum mill and plantation. We followed the trail that led up a steep hillside through some jungle growth and Tarzan jokes were cracked. "The vine, Jane, not mine," is an example. Some picture taking, exploration and speculating on what various structures were used for and a general consensus that being a slave on a plantation or at this factory must have been a sorry life indeed.

Back to the boats for some gourmet meals. CHARISMA dined on salmon steaks, potatoes au gratin, broccoli and watermelon. Don and Kay Simon, friends of the Desimones who were on their own boat for eight weeks sailing south along the islands of the Caribbean, joined them for dinner. Kay later visited with Ute (Park City friends) on the SEA YARN. KOKOMO's crew were treated to a sumptuous foil dinner of baked potatoes, salmon & banana boats; while Ron marinated and BBQ'd steaks for his shipmates on board WHITE WINDS, served with green salad and watermelon for desert. They discovered that they had failed to include sweets, other than cookies, in their shopping list. This crew should make a deal with those on board SEA YARN!

(The next segment of this article will appear in the February *Rambler*)

## PREPARING FOR A TRIP TO THE LODGE


### FOR YOUR INFORMATION

by Barbara Jacobsen

Probably a lot of you are wondering how to prepare for an outing at the Lodge. Since we are encouraging people to spend the night on Christmas Eve and New Year's Eve, here is a list of things to bring:

1. Sleeping bag and pillow.
2. Food, drinking water, any kind of liquid drinks. (instant coffee, tea, hot chocolate, pop).
3. All utensils, (knives, forks, spoons, plates, cups, etc.), pots, pans (if you plan to cook).
4. Plan for your own meals unless otherwise specified as potluck.
5. All personal items, plenty of warm clothes, appropriate foot wear.

The road to the Lodge is closed in the winter. REMEMBER--the only way to obtain access is on skis, snowshoes, or by walking. You will need to pull a sled or whatever for hauling belongings up to the Lodge.



**Windows**  
Charles Lesley  
364-2486  
**Washed**  
Commercial  
Residential

WMC Member



## END-OF-YEAR HIKE UP MOUNT OLYMPUS

November 10, 1990

By Richard Zeamer

with contributions by Jerry Hatch,  
Tom Walsh and Donn Seeley

Advertised as a "generic year-end hike" this hike grew into a memorable adventure. Led by Jerry Hatch, it started from Wasatch Drive and proceeded up the slope just north of Tolcats Canyon. Our stated objective was the "stream crossing" in Tolcats Canyon. This was a modest one-fourth of the way to the top. Jerry had casually remarked that some of us may want to continue farther than that. I don't think he guessed that one third of that crowd of twenty-one would be willing to go to the top.

It was a beautiful day. It was warm for November. Our views were clear and spectacular. When we got to the stream crossing, most wanted to go on. So far the trail had been dry and relatively easy. This was soon to change. As we continued the slopes became steeper; rocks had to be climbed and snow appeared. More hikers turned back, but others continued. Gradually our numbers dropped.

Those who continued were lured on by the challenge and the magic of the sparkling, dripping, threatening environment. Soon our number would drop to seven. These were Tom Walsh, Rich Bayless, Don Seeley, Knick Knickerbocker, Louise Rausch, Richard Zeamer and Jerry Hatch.

Jerry Hatch noted as we went up, the shrub oak, mountain mahogany and the spruces; and also the loveliness of the day, the beautiful freshness, the water running down the rocks and the bushes highlighted by the reflections from high on the ridge.

Tom Walsh liked the unexpected experience of doing a typical hot-summer hike near the end of autumn. It was a novelty and a challenge. It was a super way to enjoy Mount Olympus.

Up there it was cold and snowy but it was still possible to hike. Yes, it was a bit risky. As you stepped on the snow covered rocks you could slip

or your foot could drop in a crack or hole. But then there was the fun of throwing snow balls. We all enjoyed this and the good comradery that went with it.

We persevered through deepening snows to the saddle ridge and then climbed up the final snow-covered rock cliff to the summit. Jerry Hatch recalls Louise bravely going up this last slope through the Eye-of-the-Needle rock formation, while the rest of us climbed the more usual way found by Tom Walsh.

Then, almost suddenly, we climbed out on the jagged summit. The view was fantastic, and we were on the top! We looked down at the city from Downtown to Draper, and at the Salt Lake desert. Behind us we saw the other Wasatch Peaks. We munched our snacks. Tom Walsh pointed out Lone Peak, Twin Peaks and unusual Triangle Peaks, which has a field at the top.

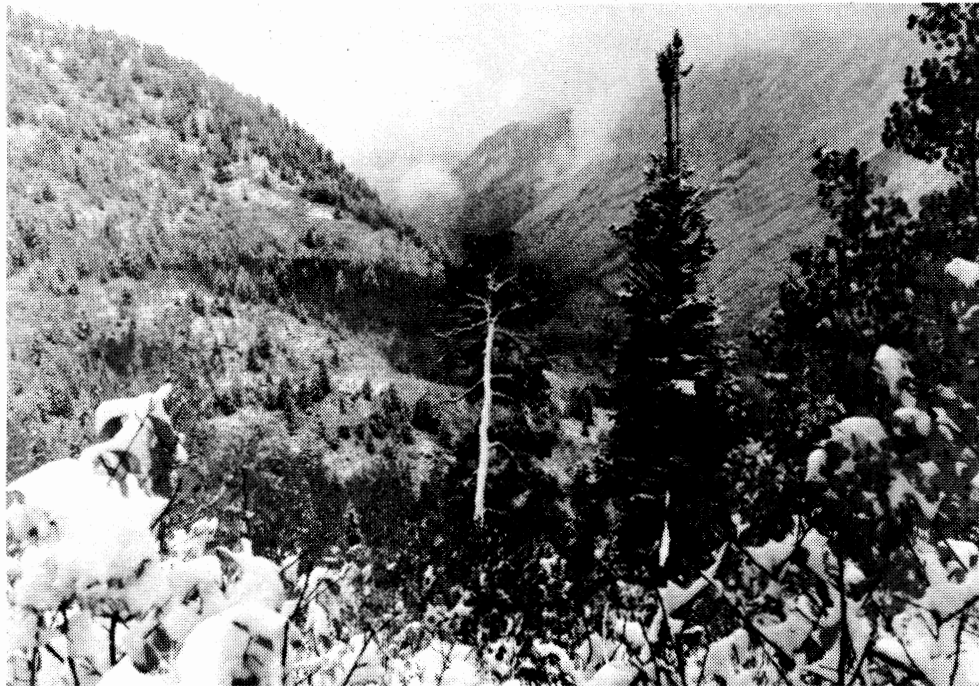
For Donn Seeley, the hike was a ball. Especially going down, between the saddle and the ridge, where all seven of us took part in snow ball exchanges and the rowdy fun. He acknowledged that he took some hits. However, the powder snow made soft and forgiving projectiles. What Donn did not like was walking on wet and snowy quartzite boulders. It was like walking on a mine field, one slip and disaster.

Coming down in the afternoon we were no longer by ourselves on the trail. We met Norm Fish with three companions and a dog. Then there were others including Harold Goodro. Finally, about 4 p.m. we arrived down at our cars. We were tired, wet, and muddy but in good spirits.

Those participating in the hike included Bob Swain, Bonnie Kaye, Richard Bayless, Donn Seeley, Sandra Taylor, Joel Thompson, Richard Zeamer, Clint Lewis, Christine Wach, Anne Walthall, Janet Curry, John Hail, Russell Wilhelmsen, Conley Adams, Louise Rausch, Norm Pobanz, Tom Walsh, Leah Mancini, Knick Knickerbocker, Mary Anne Losee and Jerry Hatch.

## PFEIFFERHORN VIA RED PINE LAKE

### "FIRST FALL SNOW"



October 7, 1990  
by Knick Knickerbocker

The Wasatch Mountains were covered by low clouds as the four of us showed up at our meeting place. Our hike to Pfeifferhorn via Red Pine Lake looked like it was in jeopardy. But the "Adventurous Foursome" decided to hike as far as we could, even though we expected to run into snow. Our leader, Jim Sweeney, had forewarned us about possible adverse weather, so we were all prepared.

At the mouth to Little Cottonwood Canyon we were greeted by the temperature board that read 34 degrees, a little further up we started running into snow. The snow had already been coming down for a few hours this morning in the canyon.

As we worked our way up the trail, wondering where the slippery rocks lay under this first blanket of snow, we watched the snow build up on the gold aspen leaves and green pines. It was a very quiet and peaceful hike with only the crunching sound of 3 to 4 inches of snow packing under our boots.

Even though it snowed the whole time we hiked, the color contrasts were wonderful with all the bright fall colors and the green pine trees covered with fresh white snow. I wished the rest of you could have enjoyed it with us. (Especially you L.M., P.P., L.N., & R."D" S.)

We went as far as Red Pine Lake before we turned back. When we got to the lake we could barely see the ridge leading up to Pfeifferhorn, and it too soon disappeared under heavy cloud cover. With safety in mind we made the decision to turn back.

The "Adventurous Foursome" consisted of: Jim Sweeney (leader), Jim Janney, Keith Koepsel and Knick Knickerbocker.



## CLASSIFIED ADS

### AD POLICY

Members may place classified ads for used sports equipment free of charge. Other classified ads require a \$5.00 donation to the WMC for up to 20 words with \$.20 per word over 20. Words of 2 letters or less will not count as a word.

### NOTICE!

Send your ad (with a check enclosed if it is not a used sports equipment ad) before the 13th of the month to Sue DeVall, 11730 South 700 West, Sandy UT 84070 or call Sue at 572-3294 for information.

The *Rambler* cannot accept any ad that is inconsistent with the purposes of the WMC, or that offends the sensibilities of club members.

### HOUSING

For Rent: Beautiful one-room log cabin located in the heart of the red rock country; 10 miles west of Capitol Reef National Park, next to Boulder Mountain. \$30.00 per night. For information or reservations, call Barbara, 1-425-3752.

Big South Valley home to share. Private bath, 2 bdr., den, living room, storage. Share kitchen & utilities. Pets, horses ok. Prefer 1 or 2 adult women. \$360/mo. Call Sue 542-3294.

### USED EQUIPMENT

\*YAKIMA SKI RACK for small car with rain gutters --includes locking towers, four foot cross-bars, and locking ski attachment.

\*CAR TOP CANVAS CARRIER--42 X 42 X 14, \$50.

\*BIKE RACK 9FoldARack Brand)--holds three bicycles, \$25.

\*UTILITY TRAILER--4' X 7' with two foot sides. Lights, large tires, removable tailgate. \$400 or best offer. Call Rosalie, 467-9802, if interested in any of these items.

KARHU XCD GT X-C SKIS--metal edges, 215 cm, Chouinard cable bindings, 487-1169 after 6PM.

PHOENIX CLASSIC SKIS--205 cm, great powder board/lift ski. Dan 649-0428.

TELEMARK SKIS ROSSIGNOL TRS--205 cm, voile releaseable binding, \$85 OBO. Brett, 485-3398, 364-2315.

TELE BOOTS ASOLO EXTREME PRO--Mens size 5. Call Leigh H 649-0416, W 972-0404.

### TRIPS

Partners wanted for x-country ski trips to Royal Gorge (Tahoe), Sun Valley, Yellowstone and others. Neal Daskal, 539-0625 for details.

Himalayan Treks, July, August 1991. Excellent Indian leaders. Few Westerners have trekked these routes. Himachal 3 weeks; Zaskar/Ladakh 4 weeks. Call Carol Masheter, H 466-5834, W 581-7491.

## Wasatch Mountain Club

Membership applicants must participate in at least two Club outdoor or service activities, verified by the signatures of approval from the activity leaders. Yearly dues are \$25.00 single, \$35.00 couple. A \$5.00 initiation/reinstatement fee is charged.

### 1990-91 GOVERNING BOARD

President	John Veranth	278-5826
Secretary	Jim Elder	943-3321
Treasurer	Cynthia Anderson	359-8823
Membership	Julie Ann Jones	278-4753
Boating	Jeff Barrell	278-3510
Conservation	Janet Friend	268-4102
	Keith Johnson	268-2453
Entertainment	Marc Hutchinson	355-3227
Hiking	Jerry Hatch	467-7186
	Gene Woodridge	973-8073
Lodge	Vince Desimone	1-649-6805
	Kathy Klein (rentals)	272-8059
Mountaineering	Tony Thompson	363-9891
Publications	MagdalineQuinlan	521-5738
	Leslie Mullins	363-0560
Ski Touring	Norm Fish	964-6155
Information	Barbara Jacobsen	943-3715
	Aaron Jones	467-3532

### COORDINATORS

Bicycling	Rich Gregersen	467-6247
	Nance Randall	485-1483
Canoeing	Randy Klein	485-3360
Kayaking	Marlene Egger	277-2894
Sailing	Vince Desimone	1-649-6805
Rafting	Lidia DiLello	943-3321
	Jim Elder	943-3321
Volleyball	Doug Stewart	269-1833

### TRUSTEES

Karin Caldwell	942-6065
Dale Green	277-6417
Milt Hollander	277-1416
Alexis Kelner	359-5387
O'Dell Peterson	Trustee Emeritus
Dale Green	Historian

# WASATCH MOUNTAIN CLUB

APPLICATION FOR NEW MEMBERS/REINSTATEMENT FOR PREVIOUS MEMBERS

RAMBLER SUBSCRIPTION QUALIFICATION FORM

**DO NOT USE THIS FORM TO RENEW YOUR MEMBERSHIP**

Please read carefully and fill out completely. Your signature is required.

APPLICANT'S NAMES: \_\_\_\_\_

ADDRESS: \_\_\_\_\_ CITY \_\_\_\_\_ ST \_\_\_\_\_ ZIP \_\_\_\_\_

HOME PHONE \_\_\_\_\_ DAY PHONE \_\_\_\_\_ BIRTH DATE \_\_\_\_\_

I hereby apply for ☐ NEW MEMBERSHIP ☐ STUDENT  
☐ SINGLE membership in the WMC  
☐ REINSTATEMENT ☐ COUPLE

I ☐ DO  
I ☐ wish to receive the *Rambler* (the WMC publication). Subscription price  
☐ DO NOT is not deductible from the dues.

Enclosed is \$ \_\_\_\_\_ for one year's (Mar 1 19\_\_ to Feb 28 19\_\_) dues and application fee.  
\*\*\* Make checks payable to Wasatch Mountain Club (CHECKS ONLY) \*\*\*

Remit: \$20.00 for student membership (\$15.00 dues and \$5.00 application fee)  
\$30.00 for single membership (\$25.00 dues and \$5.00 application fee)  
\$40.00 for couple membership (\$35.00 dues and \$5.00 application fee)  
(NOTE: These rates include the \$12.00 for the *Rambler* subscription)

YOU MUST COMPLETE THE FOLLOWING FOR MEMBERSHIP CONSIDERATION  
THE ACTIVITY DATES MUST HAVE BEEN WITHIN ONE YEAR OF THIS APPLICATION

qualifying activity	date	signature of recommending leader
---------------------	------	----------------------------------

1. \_\_\_\_\_

2. \_\_\_\_\_

I agree to abide by all the rules and regulations of the WMC. I am 18 years of age or older.

I am willing to serve the WMC in the following areas: (please check)

<input type="checkbox"/> Service Project	<input type="checkbox"/> Lodge work	<input type="checkbox"/> Conservation	<input type="checkbox"/> Rambler	<input type="checkbox"/> Thurs Night Hikes
<input type="checkbox"/> Hike Leader	<input type="checkbox"/> Boat Leader	<input type="checkbox"/> Ski Leader	<input type="checkbox"/> Social Assist	

I found out about the WMC from \_\_\_\_\_

APPLICANT'S SIGNATURE: \_\_\_\_\_

MAIL APPLICATION AND CHECK TO: MEMBERSHIP DIRECTOR  
WASATCH MOUNTAIN CLUB  
888 SOUTH 200 EAST, SUITE 111  
SALT LAKE CITY, UTAH, 84111

LEAVE BLANK

Receipt #: _____	Date Received: _____	Amount Recv'd: _____
(or check #)		(less application fee)
Board Approval Date _____		(Rev 7/88 Pub 10/90)

WASATCH MOUNTAIN CLUB  
888 SOUTH 200 EAST, SUITE 111  
SALT LAKE CITY, UT 84111

IN CASE OF EMERGENCY PLEASE NOTIFY  
THE SALT LAKE COUNTY  
SHERIFF'S OFFICE AT:

**535-5855**

OR THE APPROPRIATE EMERGENCY  
AGENCY IN YOUR LOCATION.

**1/91**

SECOND CLASS  
POSTAGE PAID  
SALT LAKE CITY, UT  
NO. 053410