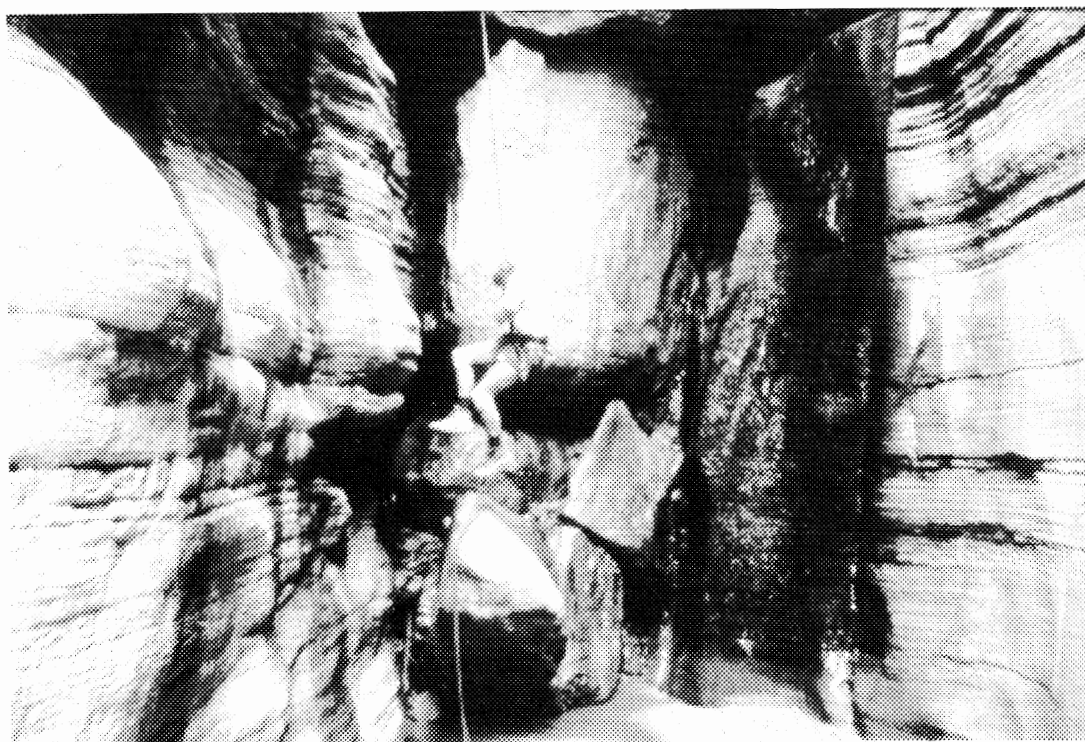


The Rambler

Wasatch Mountain Club
DECEMBER



Membership list removed from on-line Rambler

VOLUME 69, NUMBER 12, DECEMBER 1992
Printed on 100% Recycled Paper

The Rambler

Managing Editors

Christine Allred, Chris Baierschmidt

Jean Frances

ADVERTISING: Jill Pointer
CLASSIFIED ADS: Sue De Vall
COVER LOGO: Knick Knickerbocker
MAILING: Duke Bush
PRODUCTION: Jean Frances, Randy Klein

THE RAMBLER (USPS 053-410) is published monthly by the WASATCH MOUNTAIN CLUB, Inc., 888 South 200 East, Suite 207, Salt Lake City, UT 84111-4220. Telephone: 363-7150. Subscription rates of \$12.00 per year are paid for by membership dues only. Second-class postage paid at Salt Lake City, UT.

POSTMASTER: Send address changes to THE RAMBLER, Membership Director, 888 South 200 East, Suite 207, Salt Lake City, UT 84111-4220. **CHANGE OF ADDRESS:** This publication is not forwarded by the Post Office. Change of Address should be submitted in writing to the Membership Director, 888 South 200 East, Suite 207 Salt Lake City, UT 84111-4220. All correspondence regarding the mailing of THE RAMBLER should be directed to the Membership Director at that address. Allow 45 days for address changes.

The right is reserved to edit all contributions and advertisements and to reject those that may harm the sensibilities of WMC members or defame the WMC.

Copyright 1992, Wasatch Mountain Club.

PROSPECTIVE MEMBER INFORMATION

THE RAMBLER, the official publication of the Wasatch Mountain Club, is published monthly by and for its members. Persons wishing to become members may receive THE RAMBLER for two months by writing the Membership Director, 888 South 200 East, Suite 207, Salt Lake City, UT 84111 and enclosing \$3.00. Checks are to be made payable to the Wasatch Mountain Club. There is a \$10.00 charge for returned checks.

SUBMITTING ARTICLES TO THE RAMBLER

IF YOU HAVE MOVED: Please notify the WMC Membership Director, 888 South 200 East, Suite 207, Salt Lake City, UT 84111-4220, of your new address.

IF YOU DID NOT RECEIVE YOUR RAMBLER: Contact the Membership Director to make sure your address is in the Club computer correctly.

IF YOU WANT TO SUBMIT AN ARTICLE: Articles, preferably typed double spaced or on a floppy disk must be received by 6:00 pm on the 15th of the month preceding publication. Mail or deliver to the WMC office or to the Editor. Include your name and phone number on all submissions.

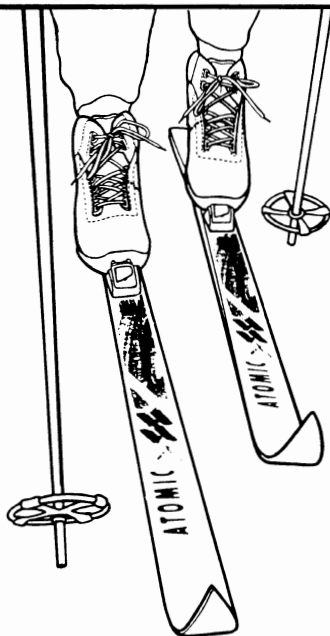
IF YOU WANT TO SUBMIT A PHOTO: We welcome photos of all kinds: black & white prints, color prints, and slides. Please include captions describing when and where the photo was taken, and the names of the people in it (if you know). **Photos will not be returned unless requested and accompanied by a self-addressed stamped envelope. Otherwise they will be found in the RED BOX at 1398 E. Downington.**

WMC PURPOSE

(Article II of the WMC Constitution)

The purpose shall be to promote the physical and spiritual well being of its members and others by outdoor activities: to unite the energy, interests and knowledge of students, explorers and lovers of the mountains, deserts and rivers of Utah; to collect and disseminate information regarding the Rocky Mountains in behalf of science, literature and art; to explore and picture the scenic wonders of this and surrounding states; to foster awareness of scenic beauties; and to encourage preservation of our natural areas including their plant, animal and bird life.

COVER PHOTO: Monty Young rappeling down Tuckup Canyon. Photo by Rob Seely



Cross Country TOURING At it's Best!

All Cross Country Touring
Packages Are Not Alike.

You Can Buy Greatly
Improved Quality and
Performance for Minimal
Extra Investment!

A Package from Kirkham's Offers these Advantages:

- More Stability and Control with "NNN" Systems.
- Better "Kick" and Longer "Glide".
- More Durable Skis - More Comfortable Boots!
- Knowledgeable staff to answer all your questions.
- Skis can be "Camber Tested" to you for perfect fit.
- All packages include professional mount & wax.



Atomic Light Touring Package

Beginner Price - Expert Quality!

- Atomic Tricone 58 SC Ski
- Mount/Wax
- Alpine NNN-2 102 Boot
- \$279.00 Component Pricing
- NNN-2 Touring Binding

\$154.99 Package Price

Atomic Off-Trail Package

One of Our Finest Off Trail Packages!

- Atomic Tricone 58 SC Ski
- Mount/Wax
- Alpine 800 BC NNN Boot
- \$369.00 Component Pricing
- BC NNN Binding
- Swix Classic Pole

\$249.99 Package Price

Atomic Track Package

More Stability and Improved Performance.

- Atomic Tricone 48 Ski
- Mount/Wax
- Alpina NNN-2 152 Boot
- \$301.50 Component Pricing
- Alpina NNN-2 Touring Binding
- Exel Nova XL Pole

\$175.99 Package Price

Fischer Metal Edge Package

More Control for Backcountry Adventures!

- Fischer E99 Crown Ski
- Mount/Wax
- Alpine 800 BC NNN Boot
- \$470.00 Component Pricing
- BC NNN Binding
- Swix Classic Pole

\$335.99 Package Price

Other Adult Packages from \$129.00

SKI FREE!

Learn the Right
Way the First Time!

Kirkham's will pay you up to \$20 for a lesson and a day of cross country skiing at Solitude Nordic Center or White Pine Touring Center with purchase of any package priced over \$149. Some restrictions apply - details available.



Ski Information Clinics!

Learn about Ski care and cleaning, Waxing Technique, Base Structure...even where to ski. These informal clinics are open to everyone that would like to attend.

**All Clinics Held Thursdays
from 7:00 to 8:00 pm**

December 3 January 14 February 11
December 17 January 28 February 25

NOW OPEN
TIL 9 PM
MON-FRI



Kirkham's
outdoor products



3125 South State Street (801) 486-4161 Open Monday - Friday 9:30 to 9:00 Saturday to 7:00

TWENTY FIVE YEARS AGO IN THE RAMBLER

DECEMBER, 1967

by Dale Green, Historian

A report on the Happy Hippy Halloween Party - "With a party as great as this, who can find words to describe it? Ask those who went... One who was there said: 99 Hippies, 10 flashing lights, 1 loud band, 1 bar, much food — and a snowstorm outside..." (by Ann McDonald).

December's Rambler was devoted to ski touring with articles by Milt Hollander and spectacular photos by Alexis Kelner. C. Keller's Ski Tour Rating Guide included several tours no longer available such as Gad Valley and Snake Creek Pass. The Avalanche Safety Course was held at the Utah Power and Light Auditorium at 36 South State, a site now occupied by a mall.

Trip reports included Grandeur Peak, Mount Olympus and one of my personal favorites, up Mt. Raymond via Butler then down Bowman Fork to John & Helen Mildon's cabin for refreshments.

ATTENTION ARTISTS WILDERNESS LOVERS

We're looking for your support and help

*A juried art exhibition and sale, **THE SPIRIT OF UTAH WILDERNESS**, is being planned for December 3-4, 1992. Call-For-Entry forms are now available from the Tivoli Gallery, 255 S State St., SLC, UT 84111, or phone 521-6288.*

The sale will benefit The Wilderness Society of Utah in cooperation with the Utah Wilderness Coalition. WMC is one of 38 member organizations. Artists will be paid 40% of the sale price for works sold, and 30% will be donated to The Wilderness Society.

Your help is also needed in organizing this event. Call Janet Millikan, 943-5666, if you have questions or wish to help.

EVENTS AT A GLANCE

SKIING

December

- 5 Leader's Choice
- 5 Grizzley Gulch Patsey Marley
- 6 Days Fork
- 6 Brighton to Silver Fork
- 6 Leader's Choice
- 6 Nordic Track Technique
- 12 Catherine Pass from Alta
- 12 Strawberry Peak
- 13 Leader's Choice
- 13 Lower White Pine
- 19 Uintas
- 19 Wolverine Bowl
- 19 Lower Silver Fork
- 20 Powder Park III
- 20 Beartrap Fork
- 20 Lake Mary
- 20 Box Elder Peak
- 24 Upper Greens Basin
- 25 Snake Creek Pass
- 26 Lower Days Fork to the Meadow
- 26 Grizzley Gulch to Upper Bowl
- 27 Upper Greens Basin
- 27 Albion Basin Road

January

- 1 Lake Mary
- 2 Silver Fork
- 2 Daniels Pass to Rattlesnake Mountain
- 3 Grizzley Gulch
- 3 Mill D No. Fork to Dog Lake to Millcreek Canyon via Little Water Gulch
- 3 Powder Park
- 10 Home Run
- 10 Mill D to Dog Lake via Little Water Gulch
- 10 Gobblers Knob via Bowman Fork
- 16 Willow Hollow (Wolf Creek Road Unitas)
- 16 Grizzley Gulch
- 16 Leader's Choice
- 17 Scotts Pass
- 17 Brighton to Catherine's Pass
- 17 Willow Peak
- 17 Maybird Gulch

SNOWSHOE

December

- 6 Leader's Choice Easy Showshoe Tour/Hike
- 13 Greens Basin
- 19 Desolation Lake via Beartrap
- 24 Bountiful Foothills
- 27 Dog Lake

January

- 1 Willow Lake
- 2 Leader's Choice
- 9 Lower Silver Fork

SOCIALS

December

- 25 Christmas at the Lodge
- 24-27 Overnights at the Lodge
- 31 New Year's Eve at the Lodge

January

- 15 Awards Banquet
- 24 Spaghetti Dinner at Vince and Linda's
- 30 Dinner and Dancing

SPECIAL EVENTS

January

- 9 Avalanche Clinic
- 10 Audrey Kelley Classic--x-country skiing

VOLLEYBALL

Monday Evenings
Dec 7, 14, and 21

REMINDER: NO VOLLEYBALL DEC. 28.

MOUNTAIN BIKING?
WE DO IT!! IT'S THAT SIMPLE.!

IF YOU'RE LOOKING FOR A MOUNTAIN BIKE AND PLAN ON RIDING IT IN THE DIRT, WE'RE THE PEOPLE TO SEE: WITH LINES LIKE FAT CHANCE, FISHER, MARIN, IBIS, BIANCHI, MOUNTAIN GOAT, SLINGSHOT, BONTRAGER, AND SALSA ALL UNDER ONE ROOF, YOU CAN SPEND MORE TIME TEST RIDING AND LESS TIME DRIVING FROM SHOP TO SHOP.

KNOWLEDGE AND PRICES?

FIND SOMEONE WHO RIDES OR RACES A MOUNTAIN BIKE AND ASK THEM ABOUT US.

PARTS AND ACCESSORIES?

WE'VE GOT LOTS OF THEM. NOT JUST BREAD AND BUTTER SHIMANO, BUT TRICK STUFF LIKE COOK BROS., BULLSEYE, WTB, SALSA, ROXSHOX, EXOTIC, WHEELGOODS, AND A WALL FULL OF KNOBBY TIRES.

REPAIRS? WE DO THEM RIGHT!!

AND USUALLY *OVERNIGHT*. NEED A WHEEL BUILT TODAY OR A QUICK TUNE BEFORE A TRIP TO THE DESERT? GIVE US A CALL. WE DON'T HIRE SALESMEN.

EVERYONE WHO WORKS HERE IS A MECHANIC.
WE LOVE BIKES AND THE PEOPLE WHO RIDE THEM.

WILD ROSE

702 THIRD AVENUE

533-8671

Logo

**NOMINATIONS
COMMITTEE REPORTS**

The following people have accepted nominations for the indicated directorships:

President	Jerry Hatch
Secretary	Nance Allen
Treasurer	Tom Silberstorff
Membership	Linda Kosky*
Boating	Randy Klein*
Conservation	John Veranth*
Entertainment	Mary Ann Losee and Randi Gardner
Hiking	Donn Seeley*
Lodge	Still Open
Mountaineering	Steve Walker*
Publications	Jean Frances* and Christine Allred*
Ski Touring	Norm Fish* and Clint Lewis
Information	Mike Treshow
Trustee	Karin Caldwell

*Incumbent (s)

The committee welcomes additional suggestions for nominees. Contact Susan Allen (485-9209), Ilka Allers-Olsen (272-6305) or Julie Jones (278-4753). Co-directors where two names fill the position.

SPORTS MEDICINE

Offers

Cross Country Ski Race Schedule

A copy of this schedule will be kept in the
WMC office or you may call:
Dave Hanscom (581-7023 W) (1-649-3213 H)
or write: 1451 Moray Court, Park City 84060

CLUB ACTIVITIES

Only activities approved by the appropriate **WMC Director** can be listed in the Club Activities section of the *Rambler*. Send your proposed activity for approval to the hiking, boating, skiing, etc., director for inclusion in their activity schedule. Those activities sent directly to the *Rambler*, without approval, will not be published.

REMINDER

PARKING INFO: CANYON PARKING NOTE: Even days - down side. Odd days - up side. Check sign in canyon.

HILLSIDE PARKING NOTE: Park on the west side of the parking lot, south of the bank.

THANKS

MID-WEEK MONDAY THROUGH FRIDAY Sue Berg ((576-0532) is interested in organizing mid-week ski tours throughout the whole season. Please call Sue to set up anything of interest.

- Dec 5 **SKI TOUR: LEADER'S CHOICE** (NTD) Janiece Pompa (328-9726) will meet you at
Sat Parleys Canyon K-Mart at 9 am.
- Dec 5 **SKI TOUR: GRIZZLEY GULCH PATSEY MARLEY** (MOD) Presently this area has
not been developed by Alta, but is utilized by the Heli operators. Karen Perkins (272-2225)
will meet you at 9 am at the Hillside Plaza shopping center. Skins, pieps, and shovel are
advised.
- Dec 6 **SKI TOUR: DAYS FORK** (NTD) This tour starts with a short steep pitch so skins would
Sun be helpful. Meet Mike Hendrickson (942-1476) at 9 am at the Hillside Plaza shopping
center.
- Dec 6 **SKI TOUR: BRIGHTON TO SILVER FORK** (MSD) This tour will go over Twin Lakes
Pass. Skins are desirable but pieps and shovels are required. Meet Larry Stewart (942-0213)
at 9 am at the Hillside Plaza shopping center.
- Dec 6 **SKI TOUR : LEADER'S CHOICE** (MOD) Meet Val Naef (255-7562) at 9 am at the
Hillside Plaza shopping center. Skins, pieps, and shovel recommended.
- Dec 6 **SKI EVENT: NORDIC TRACK TECHNIQUE - CLASSIC AND SKATING** Call
Greg Janiec (277-8726) for details. The course will be held at a groomed area and keyed to
the skills of the respondents.
- Dec 6 **SHOWSHOE: LEADER'S CHOICE TOUR/HIKE** (NTD) Enjoy the mountains this
winter, try snowshoeing. No special skills required. Call Doug Stark (277-8538) for
information on trip location, snowshoeing, and snowshoe rental locations. Meeting place is
behind the bank at the Hillside Plaza (7000 S. 2300 E.) at 9:30 am.
- Dec 7 **VOLLEYBALL:** 6:30 pm at Highland High School (2100 South 1700 East). \$1.00
Mon members, \$2.00 non members. First-timers please call Duke (299-1989).

- Dec 12 Sat **SKI TOUR: STRAWBERRY PEAK** (MOD) This tour is in the Daniels Summit area which is primarily rolling terrain with some moderate slopes. Meet Dan Willis (487-6924) at 9 am at the Parleys Canyon K-Mart.
- Dec 12 **SKI TOUR: CATHERINE PASS FROM ALTA** (NTD) Register with T.A. Netelbeek (582-1381). Should this event be relegated to a hike because of a lack of snow, Governor Bangerter's Great Salt Lake Pumps best be traded for a desalination plant.
- Dec 13 Sun **SKI TOUR: LEADER'S CHOICE** (MOD+) Register with Dave Smith (278-6515) for details related to this tour.
- Dec 13 **SKI TOUR: LOWER WHITE PINE** (NTD) Join Tom Walsh (969-5842) for Phase I of this easy tour. Phase II will be held at the Canyon Inn for refreshments and an analysis of skiing maneuvers viewed and discussed. Back country skis and boots are strongly recommended. Meet Tom at 9 am at the Hillside Plaza shopping center
- Dec 13 **SNOWSHOE: GREEN'S BASIN** (NTD) Visit this beautiful hidden meadow. Beginning snowshoers are more than welcome on this tour lead by Howard Wilkerson (277-1510). Meet at Hillside Plaza (7000 S. 2300 E.) behind the bank at 10 am.
- Dec 14 Mon **VOLLEYBALL:** 6:30 pm at Highland High School (2100 South 1700 East). \$1.00 members, \$2.00 non members. First-timers please call Duke (299-1989).
- Dec 19 Sat **SKITOUR: UINTAS** (MOD) Call Milt Hollander (277-1416) to register. Destination to be selected by conditions. Uinta tours tend to be flatter and longer than Wasatch tours.
- Dec 19 **SKITOUR: WOLVERINE BOWL** (MOD+) Meet Will McCarvil (943-5520) at Hillside Plaza at 9 am. Lift ticket up Millicent, hike the ridge up and ski the southeast bowl of Wolverine. Pieps and shovels required.
- Dec 19 **SKI TOUR: LOWER SILVER FORK** (NTD) Meet Christine Allred at Hillside Plaza at 9:30 am. Sturdy track skiis ok. This is one of the nicest tours in the Wasatch. We go up a road to a wide meadow. Bring a foam pad and enjoy a picnic in the sun.
- Dec 19 **SNOWSHOE: DESOLATION LAKE VIA BEARTRAP** (MOD) Join Tiger Funk (485-4825) for this more difficult tour. Shovels recommended. Tiger will meet you at the Hillside Plaza (7000 S. 2300 E.) at 9 am.
- Dec 20 Sun **SKI TOUR: POWDER PARK III** (MOD+) Join Jim Brown (359-0754) at Hillside Plaza at 9 am. Pray for good snow!!

- Dec 20 Sun **SKI TOUR: BEARTRAP FORK (MOD)** Meet Frank & Susanne Davis (272-7217) at Hillside Plaza 9 am. Great powder skiing. Be prepared for a "through the trees" return to the car. Pieps and shovels recommended.
- Dec 20 **SKITOUR: LAKE MARY (NTD)** Join Phil Fikkan (583-8499) at Hillside Plaza 9 .m. This is a nice tour past the Wasatch Mt. Club Lodge to a beautiful Alpine lake (it will be frozen so no fishing poles required). Track skis not suitable on this trip.
- Dec 20 **SKI TOUR: BOX ELDER PEAK (MSD)** Call George Westbrook at (942-6071) to register. Come prepared for a MSD tour.
- Dec 20 **RSVP DAY: Last day to RSVP for the dinner at the lodge. See Dec. 24-27 for details.**
- Dec 21 Mon **VOLLEYBALL:** 6:30 pm at Highland High School (2100 South 1700 East). \$1.00 members, \$2.00 non members. First-timers please call Duke (299-1989).
- Dec 24-27 Thu-Sun **SOCIAL: Jude Whitehead-Daurelle welcomes old friends for a reunion with she, Kenny and Jenny. New friends are welcome as well. For information on what to bring if staying overnight, or any other details, Call Jude at (562-5897). Day cost is \$1.00 and overnight \$3.00.**
- Dec 24 Thu **SKITOUR: UPPER GREENSBASIN (MOD)** Meet Jim Piani (272-3921 at Hillside Plaza 9 am. Come and enjoy a Christmas Eve day tour.
- Dec 24 **SHOWSHOE: BOUNTIFUL FOOTHILLS (NTD+)** Explore the area near the new gas pipeline above Bountiful. After the tour join the leader Clint Lewis (295-8645) for a Christmas Eve social. Snowshoers meet at Lee's Cafe (Bountiful 5th South Exit) at 9:30 am.
- Dec 25 Fri **SKI TOUR: SNAKE CREEK PASS (NTD)** Leader needed to volunteer. Call Kyle Williams (487-9309) for details or to lead the tour. This was one of the best tours before Brighton cut it up for the new lift. Enjoy it on Christmas Day when traffic will be lower than usual
- .Dec 25 **SOCIAL: CHRISTMAS DINNER AT THE LODGE: Christmas dinner feast at 5:00 pm. PLEASE bring a potluck dish to round out the feast. RSVP to Jude Whitehead-Daurelle by Dec 20. Cost: \$5.00 for adults, \$2.50 for children.**
- Dec 26 Sat **SKI TOUR: LOWER DAYS FORK TO THE MEADOW (NTD)** Meet Ronald Thole (569-0121) at Hillside Plaza at 9 am. After a steep start, this is a beautiful tour through the trees to a meadow. Track skis are not suitable for this tour.
- Dec 26 Sat **SKITOUR: GRIZZLY GULCH TO UPPER BOWL (MOD)** Meet Kyle Williams (487-9309) at Hillside Plaza 9 am. Ski to some of the best touring terrain in the Wasatch.

- Dec 27 Sun **SKI TOUR: UPPER GREENS BASIN (MOD)** Meet Chris Biltoff (364-5729) at Hillside Plaza 9 am. We will go up the Days Fork Trail to the top of the ridge (overlooking Silver Fork). This will be supreme tree skiing. Watch for the huge snowshoe rabbit. We scare him up every time!
- Dec 27 **SKI TOUR: ALBION BASIN ROAD (NTD)** Join Ray Duda (272-4601) at Hillside Plaza 9 am. We will go up the road to the campground. This is a good beginner's tour. Track skis are not recommended.
- Dec 27 **SNOWSHOE: DOG LAKE (NTD)** Christine Allred (261-8183) will take snowshoers up Mill D North to Dog Lake on this easy paced tour. Join Christine r at the Hillside Plaza at 9:30 am.
- Dec 31 Thu **SOCIAL: NEW YEAR'S EVE--VOLUNTEER WANTED TO HOST/COORDINATE A HOLIDAY CELEBRATION AT THE LODGE. you get to run it your way. Call Frank Atwood (299-8264 or Carol Beasley (484-6617) to volunteer.**
- Jan 1 Fri **SNOWSHOE: WILLOW LAKE (NTD)** Call Ann McDonald (277-3870) for information on this slow paced tour in the aspens to this beaver dammed pond. Afterwards have New Year's cheer at Ann's.
- Jan 1 **SKI TOUR: LAKE MARY (NTD)** Meet David Minix (967-3864) at the crack of noon at Hillside Plaza Shopping Center. Bring goodies and a good humor to enjoy this traditional New Year's Day tour.
- Jan 2 Sat **SKI TOUR: SILVER FORK (NTD)** Louise Rausch will meet you at 9 am, Hillside Plaza Shopping Center for this easy tour up Silver Fork. Please come and have fun with Louise (583-3305).
- Jan 2 **SNOWSHOE: LEADER'S CHOICE (NTD)** Start the New Year out right on Leah Mancini's (582-7912) nice tour in a nearby canyon. Leah, our leader, will meet you at the Hillside Plaza behind the bank at 9:30 am.
- Jan 2 **SKI TOUR: DANIELS PASS TO RATTLESNAKE MOUNTAIN (MOD)** Guaranteed no rattlesnakes on this tour (though there may be snow snakes). See the east side of the Wasatch. Meet Brian Barkey (583-1205) and his dog Mabel at the K-Mart on Parley's Way at 8 am. This tour is somewhat long, but not too steep. Pieps and shovels required.
- Jan 3 Sun **SKI TOUR: GRIZZLEY GULCH (NTD)** Meet leader Monty Young (255-8392) at the mouth of Big Cottonwood Canyon parking lot at 9 am.
- Jan 3 **SKI TOUR: TO MILL D NO. FORK TO DOG LAKE TO MILLCREEK CANYON VIA LITTLE WATER GULCH (MOD)** Meet Ridge Williams (272-0969 or 974-2924) at the end of the road of Millcreek at 8:30 am. This will require a car pool so please call to sign up. Pieps and shovels required.

- Jan 3
Sun **SKI TOUR: TO POWDER PARK (MOD)** Meet Gary and Angela Harding (582-2322) at Hillside Plaza Shopping Center at 9 am. Pieps and shovels required.
- Jan 9
Sat **SNOWSHOE: LOWER SILVER FORK (NTD)** Walk through the beautiful forest to the mine with Janet Friend (268-4102). Meet her at 9:30 am. at the Hillside Plaza. Bring your lunch or lunch at Silver Fork optional.
- Jan 9 **AVALANCHE CLASS:** The annual Avalanche class sponsored by the WMC will be held at the Zion Lutheran Church, 1070 South on Foothill Dr. The classes will start at 8:30 am until about noon followed by a lunch break and an afternoon practice with Pieps and pit digging. Class will regroup at the mouth of Big Cottonwood Canyon in the Park and Ride to go to the Spruces. Classes will end about 3:30 pm. More information on page 20 from the Ski Directors.
- Jan 10
Sun **AUDREY KELLEY MEMORIAL XC-SKI CLINIC (NTD-)** Audrey Kelley gave her time and skill every year since Jan. 3, 1986 until 1990, to help beginning skiers learn the art of cross country skiing. The tradition continues. The clinic will be held at the Wasatch Mountain Club lodge. Morning coffee and doughnuts, and a light lunch and drink will be provided. All xc- skiers and to-be skiers, club members or not, are invited (bring a friend). A \$6.00 donation for the food will be collected at the door. Meet at the Hillside Plaza Shopping Center (7000 S. 2300 E.) at 9:00 AM. Someone will direct the group to the WMC lodge. Call Norm Fish (964-6155) if more information is needed. Instructors and help with the food are needed. (Contact Norm)
- Jan 10 **SKI TOUR: HOME RUN (MOD)** Explore the mountains west of Parkwest Ski Resort and the ridgeline beyond. With good snow this area offers excellent terrain for telemark turns. Call Ridge Williams (272-0969 or 974-2924). Meet at the K-Mart parking lot on Parley's Way at 8:30 am.
- Jan 10 **SKI TOUR: TO MILL D TO DOG LAKE VIA LITTLE WATER GULCH (MOD)** Meet Kyle Williams (487-9309) at Hillside Plaza Shopping Center at 9 am. **Call to arrange shuttle.** The trip takes Mill D to Dog Lake, ski the ridge to Soldier Fork, ski out Millcreek. Soldier Fork has some of the best snow in the Wasatch. We'll ride the bus from Hillside Plaza to the Spruces, so bring \$1 for bus fare. Pieps and shovels required.
- Jan 10 **SKI TOUR: GOBBLERS KNOB VIA BOWMAN FORK (MSD)** Meet the Caldwells' (942-6065) at the Skyline High School parking lot (3251 East 3760 South) at 8 am. To keep

Jan 15th

AWARDS AND NOMINATIONS BANQUET: Everyone come and celebrate another successful year with those volunteers being honored. The banquet will be held at the Organ Loft, 3331 S. Edison (140 E.) Social hour begins at 6:00 pm. Dinner at 7:00 pm includes a buffet with salads and side dishes, desserts, and stuffed chicken as the entree. The awards presentations and dancing follows. The cost is \$16.00 per person and includes all set-ups for the evening. **BYOB.** RSVP with payment on the bottom of this ad by January 7. Call Carol Beasley at 484-6617 if you have questions.

BANQUET RESERVATION

Please confirm my attendance for the Banquet on January 15:

_____ I will attend

_____ I will be bringing _____ guests at \$16.00 per person.

Name _____

Name of guests _____

Phone Number _____

Total amount enclosed _____ made out to: The Organ Loft

Mail checks to: Carol Beasley
2019 E Windham Circle
Salt Lake City, Ut 84109

- abreast of conditions, please call to register. Skins, pieps and shovels required.
- Jan 16 **SKI TOUR: WILLOW HOLLOW (WOLF CREEK ROAD UNITA'S)** (NTD+) Meet
Sat John Veranth (278-5826) 8 am at the old Regency Theater (K-Mart parking lot on Parley's Way) for car pooling. A short tour to a nice overlook. May be some trail breaking. Skins, pieps and shovels are advisable but not required.
- Jan 16 **SKITOUR: GRIZZLEY GULCH** (MOD) Meet Kevin Oakes (277-8742) at Hillside Plaza Shopping Center parking lot at 9 am. Bring pieps and shovels. This will be a "Nice Tour".
- Jan 16 **SKITOUR: LEADER'S CHOICE** (MSD) Call Marty Barth (532-6423) to register for this tour. Pieps and shovels required.
- Jan 17 **SKI TOUR: SCOTTS PASS** (NTD) Meet Barbara Richards (484-8097) at Hillside Plaza Shopping Center parking lot at 9 am. If there is no snow or the snow is very bad, please call for alternate arrangements.
- Jan 17 **SKI TOUR: BRIGHTON TO CATHERINE'S PASS** (NTD+) Meet Oscar Robison (485-7823) at Hillside Plaza Shopping Center parking lot at 9 am. Skins recommended, track skis **NOT** recommended.
- Jan 17 **SKI TOUR: WILLOW PEAK** (MOD) Meet Theresa Overfield and David Morris (359-6274) at Hillside Plaza Shopping Center parking lot at 9 am. Pieps, shovels and skins required. (Look up write up in old *Rambler*).
- Jan 17 **SKI TOUR: MAYBIRD GULCH** (MSD) Meet Peter Hansen (583-8249) at **LITTLE COTTONWOOD CANYON PARKING LOT** 8 am. Glorious powder slopes but toll gate at the bottom (steep heavily wooded terrain). Skins, pieps and shovels required
- .Jan 24 **SOCIAL: Vince Desimone's famous spaghetti dinner. Watch the Jan. Rambler for**
Sun **details.**
- Jan 30 **SOCIAL: Dinner followed by dancing to the Wind River Band: Watch for details in**
Sat **the January Rambler**
-

FROM THE SKI TOUR COMMITTEE

PARKING: For tours meeting at the Hillside Plaza (700 S 2300 E). Be sure to park south of the bank so parked cars will not interfere with shoppers.

FROM THE SKI TOUR COMMITTEE

TO PROMOTE SAFER AND MORE FUN SKI TOURS, THE SKI TOUR COMMITTEE WILL REQUEST SKI TOUR LEADERS TO READ THE FOLLOWING TO THE MEMBERS OF EACH TOUR THIS SEASON:

"It is your responsibility to be prepared for this ski tour with proper clothing, food, and equipment. It is also your responsibility to stay with the group!"

On the uphill climb:

The Tour Leader suggests/requests that the uphill skier never loses sight of the person following. In this way the group will stay together and be able to help any skier with problems.

On the downhill:

The Tour Leader suggests/requests before starting, we form groups of 3-4 skiers with equal ability, selecting one from the group to be Group Leader. The Tour Leader will note the Group Leaders names before starting down. During the downhill portion each Group must stay together. We will regroup at the selected locations on both the uphill portion and downhill run.

The above, together with "Tips for Tour Leaders" will be mailed with the Release Form to each leader.

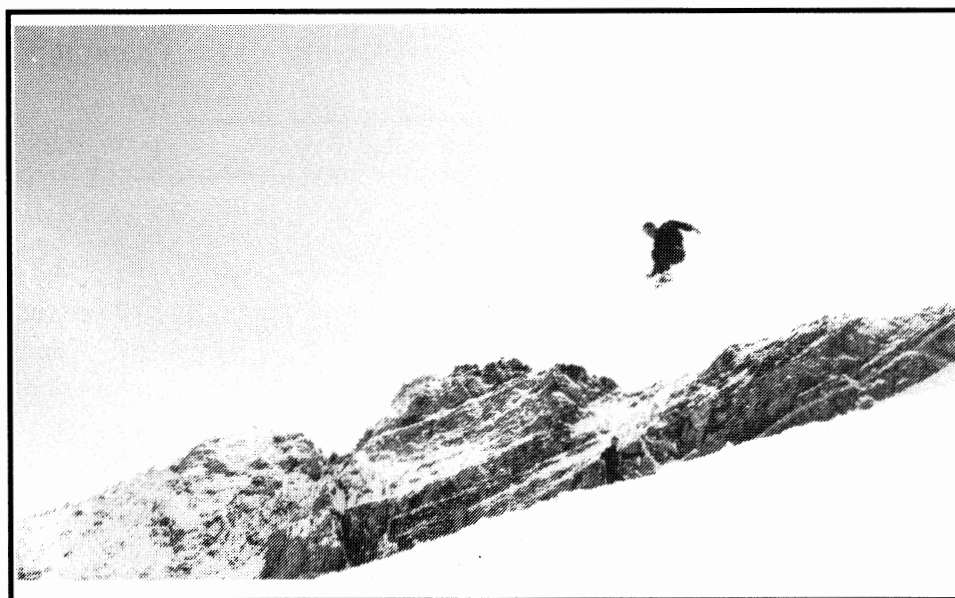
Clint Lewis: Ski Committee Chairman

SPECIAL SKIING EVENTS

Jan 9	AVALANCHE CLASS
Jan 10	AUDREY KELLEY MEMORIAL SKI CLINIC
Jan 24	BEGINNING SKI TOUR CLINIC

COMING ATTRACTIONS

- Dec 27-Jan 1 **JACKSON HOLE SKI TRIP (5 nights)** Cross-country skiing with leader Mike Budig. Lift skiing as desired. Snowshoe trips with leader chosen by participants. Hotel is four blocks from downtown Jackson with jacuzzi and pool. Limit 10 person. COST: lodging \$160-200 per person. **NON REFUNDABLE DEPOSIT: \$50 to Mike Budig (328-4512).** This trip is filled, but call to put your name on a waiting list.
- Jan 24 **VINCE DESIMONE'S FAMOUS SPAGHETTI DINNER.** Watch the Jan Rambler for details.
- Jan 30 **DINNER FOLLOWED BY DANCING TO THE WIND RIVER BAND:** watch for details in the January Rambler.
- Jan 30-31 **BRIAN HEAD/CEDAR BREAKS NORDIC/ALPINE SKI WEEKEND:** We're heading for brilliant high red-rock and forest country 4 1/2 hours south of SLC. Easy-intermediate tours in flat to rolling plateau country with optional tours for hardbodies and novices. Primary destination is Cedar Breaks Natl. Monument. Home base is Brian Head where you can also ski on your own (Day Ticket \$28). Five to six persons per room in no-frills condo units, \$24 per person per night—higher with fewer in room. The \$24 deposit due Jan 1, balance in Brian Head. Limit 15 persons. Call Ken Kraus evenings (363-4186) to register and for fact sheet. Tour not suitable for first-time XC skiers. **Register early in December--This announcement will not be repeated in January.**



YIPPEE!! It doesn't come any better! Photo from an anonymous friend.

MORE COMING ATTRACTIONS

- Feb 11-15 **NORTH RIM OF THE GRAND CANYON SKI TOURING/SNOWSHOE TRIP:**
Three night stay at Kaibab Lodge Yurt. We car-pool on Thursday to Kanab and stay overnight at a motel and catch the Snowcoach on Friday morning at 7:15 am from Jacob's Lake Lodge to Kaibab Lodge. The Yurt has very limited capacity. Christel Sysak needs a \$41.25 non-refundable deposit **ASAP** to guarantee the space. For more info call Christel (277-9988) or (943-0316) after 7 pm.
- Feb 19-21 **LOGAN CANYON XC SKI (YURT) TOUR** Kyle Williams is leading a two night XC ski (YURT) tour in beautiful Logan Canyon. Total cost: \$45 and limit to 6 skiers. Phone Kyle (487-9309) ASAP to reserve a space. **NOTE 6 IS THE LIMIT!!** This trip is filled, but call to put your name on a waiting list.
-

A FORWARD LOOK AT A SPRING OFFERING

May 19-24, 1993 WMC Grand Canyon Hike

A limited number of Phantom Ranch and Bright Angel Campground Reservations are open for this hike. The preliminary schedule outlined below is similar to the Thanksgiving, 1991 Grand Canyon hike:

Wed May 19	Travel to the South Rim
Thurs May 20	Open for hikes along the South Rim
Fri May 21	Hike down and stay at Phantom Ranch
Sat May 22	Canyon Bottom Hikes and stay at Phantom Ranch
Sun May 23	Hike up
Mon May 24	Travel home

Good news: two nights at Phantom Ranch

Bad news: four vacation days required

Phantom Ranch reservations: accommodations are in one 10 person cabin or in male or female dorms. Cost for two nights and meals is approximately \$100 and a \$50 deposit is required. The deposit is mostly refundable if the trip fills up. **NOTE:** this does not include the cost of lodging or food at the South Rim.

Bright Angel Campsite: reservations have been made for a group site for May 21 and 22. The temperature in late May averages 90-100 degrees in the day and 60-70 at night, very similar to Phoenix. Send a non-refundable deposit of \$10.

To register for the trip and get more details, send deposits to Clint Lewis 1295 So. 1300 East, Bountiful, Ut. 84010. Phone for more details at home 295-8645 or work 322-8318.

FROM THE BOATING DIRECTOR

By Randy Klein

Congratulations to Dan Gavere for being a "Calendar Guy". He's Mr. February in the Paddler Magazine 1993 River Calendar. Also, thanks in advance to all of you who are about to write away for and fill out your river permit application forms.

At the river permit planning meeting, we selected target dates for applying for launches. If you plan to take your vacation at a different time of the summer, use whatever dates work best for you. Phone numbers to call for applications are listed in the November Rambler (note, for Dinosaur and Westwater numbers, the November Rambler was correct, the meeting handout was wrong).

Suggested 1993 WMC River Permit Dates

<u>Permitted River Run</u>	<u>High Water Date</u>	<u>Low Water Date</u>
Rogue	May 24	
Hell's Canyon		July 21
Main Salmon	June 30	August 4
Middle Fork Salmon	June 14	
Gates of Lodore	June 9	August 17
Yampa	May 28	
Cataract Canyon	Early June	
Desolation Canyon	June 16	July 14
San Juan	May 27	Sept 29
Westwater*	June 5 or 12	Aug 28 or Sep 11

* For your 3 Westwater dates, use one of these Saturdays as your first choice, another (or a matching Sunday) as your second, and one of the matching Sundays as your third choice.

From the Kayaking Coordinator

Next year I would like to see a self support trip offered as a Wasatch Mountain Club activity. The self support trip would be open to kayakers, canoeists, and inflatable kayakers. The river proposed is Lodore and the tentative launch date is August 17th. For those interested, please send in a permit for this river. If you are interested in doing the trip later, like in September, I would be willing to entertain suggestions. Please call me if you are interested, or have questions. (486-2345)ß

Janis Huber

FROM THE PRESIDENT

by Wick R. Miller

The WMC Board met Wednesday Night, November 4. Tom Walsh, Chair of the Committee concerning leaders' responsibility, (see report of General Membership meeting), gave a progress report. The Committee hopes to have a recommendation before the end of the year and to meet with the Board at a special meeting in January.

Speaking of leaders: 215 invitations were mailed for the Annual Leaders' Party, which means 215 different individuals led outings this past year. That is about 15% of the total membership. A pretty good number.

I reported progress on the Heliski issue: see separate article for details.

The board normally meets the first Wednesday of the month at 7:30 pm in the meeting room in the basement of the H&R Block Building (9th South and 2nd East). Non-board members are invited to attend as non participatory observers. Many of us get together before the meeting at 6:00 for dinner at the Shanghai Cafe (145 East 1300 South; Good Food Cheap, Good Company)!!

WMC GENERAL MEETING

October 20, 1992

Two main topics were discussed at the General Meeting held at the Zion Lutheran Church: Lodge maintainance and Leaders' responsibility.

Vince Desimone, Lodge Director, reported the Lodge could be hooked up to the sewer now if there was a source for water. Under consideration is the development of a spring which could provide a usable source; this would require approval from the City of Salt Lake and the Utah state water engineer.

The initial expenditure for these improvements would be sizable as would be the cost of operating the system. It would need to be regulated as a public water system requiring periodic (possibly daily) testing and meeting of strict standards. It would also need to be protected from freezing which would require heating the lodge and using a special water system design. Operating and maintaining the system would require someone at the lodge every day. These operating considerations present a large, unresolved obstacle to providing our own water service.

The Brighton Ski Area currently has plans to expand their facilities and may develop their own water system. Also, the Silverfork Water System serves the area. Since WMC has water rights in the canyon, another option may be to become a customer of one of these systems.

Frank Atwood led the discussion on leaders' responsibility. The topic came to the fore because of an incident on a recent Grand Canyon trip. At issue is the moral responsibility to group members as well as legal liability to the Club.

There was a lengthy discussion on the need for leaders to screen participants for ability and preparedness before starting on a hike or any other trip. The responsibility of individual participants to the group was also discussed.

A committee was formed to work out a policy to address these issues: Tom Walsh, Chairman with Duane Call, Will McCarvill, Cassandra Badowsky, Randy Long and Michael Eisenberg. This committee will report back to the Board with recommendations for policy changes. Anyone interested in this issue should contact a member of the committee.

Betty Cluff
Secretary

FROM THE SKI DIRECTORS

Clint Lewis and Norm Fish

Avalanche Class
8:30 am
Saturday, January 9, 1993
Zion Lutheran Church
1070 Foothill Drive

An Avalanche Class sponsored by the WMC will be taught by Snowbird Avalanche Personnel. The class is open to the public. A small donation is requested to defray the cost of giving the class and for coffee and doughnuts.

The class is designed for persons who have no prior knowledge of avalanche conditions and back-country safety. Material to be covered is as follows:

- +Route finding
- +Hypothermia
- +Reasons for avalanches
- +Snow mechanics
- +Back-country safety
- +Avalanche beacon (Pieps) usage
- +Snow pits
- +Avalanche avoidance

The class will consist of two parts. The morning half will be a lecture and at 1:00 pm we will meet at the Hillside Plaza to carpool to the Spruces for outside practice using Pieps. Bring your own lunch or eat in a local restaurant. Bring **WARM** clothes for the afternoon. Skis will not be needed but bring your Pieps or Ortovox if you have one. For the morning session, enter the building from the West entrance for downstairs (rear of building).

This class is for all skiers and snowshoers who might venture into the back-country during the winter. See the article in the Jan. 9 scheduling.

SAVE A LIFE, BRING A FRIEND!

From the Snowshoe Tour Coordinator

by Doug Stark

As stated in the December Rambler for ski tours and snowshoeing activities, everyone should stay together during the tour. On the uphill climb, keep the following person in sight and on the downhill, form groups of at least three snowshoers with equal ability, staying together with their designated leader. I recommend that all participants in skiing events, and especially leaders, take an avalanche awareness class and call the USFS Avalanche hotline (364-1581) before each trip. (See schedule in next column by the Ski Directors).

HELISKI UPDATE

By Wick R. Miller

We are finally making progress on the Helifront. We have a lawyer, at a reduced fee, but it will cost. The club has contributed \$1,500 to the fund and Save Our Canyons will make an appeal for their members to match it. The plan is to give notice that we plan to file suit and at the same time ask that an injunction be issued so that Powder Bird Guides will operate by the old rules until the case is settled. We hope to have this done before Powder Bird starts flying this season.

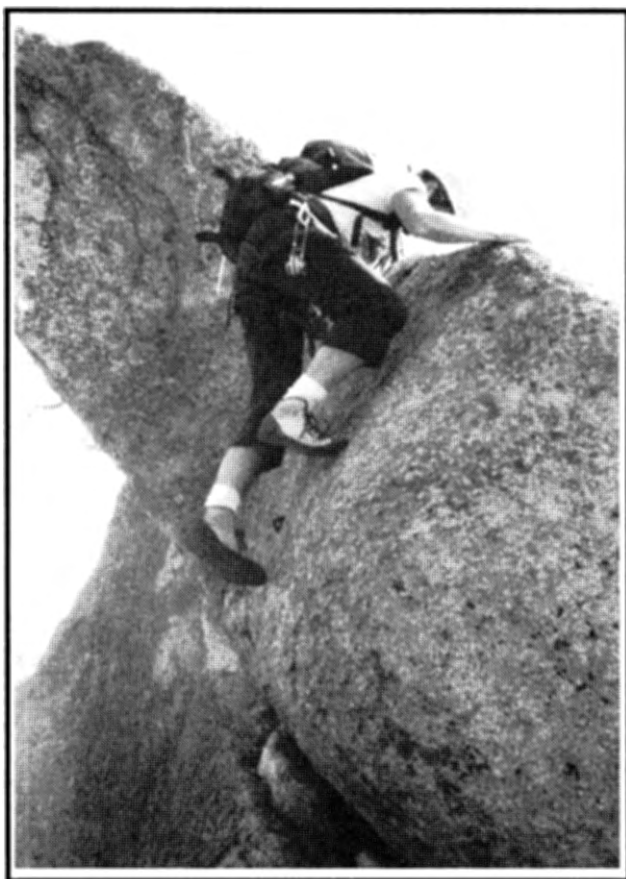
TRIP TALKS

THE THUMB

BY KYLE WILLIAMS

WHAT TO DO WHILE THE DEER HUNT WAS ABLAZING IN THE WOODS? SEVERAL PHONE CALLS FOUND FOUR OF US DECIDING THAT THE BEST WAY TO OUTWIT (READ: HIDE FROM) THE MIGHTY NIMRODS WAS TO SIT ON A THUMB. OH, BUT NOT JUST ANY THUMB! SOARING ABOVE THE HIGHWAY IN LITTLE COTTONWOOD CANYON, THE THUMB IS THE LARGEST OF THE GRANITE BUTTRESSES IN THE CANYON. MANY CLIMBERS CONSIDER IT THE ONLY "REAL" CLIMB ON THE GRANITE BECAUSE IT ALONE ENDS IN A TRUE SUMMIT KNOB.

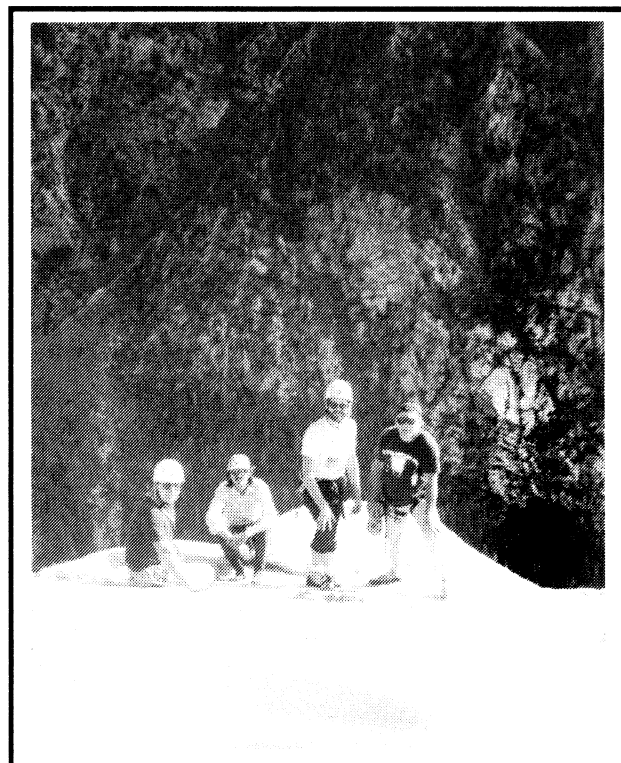
WE TRAVELED AS TWO INDEPENDENT ROPED TEAMS. PAUL HORTON LED OUT, I FOLLOWED, WITH STEVE



Kyle Williams mantling up the Summit Knob on the Thumb. Photo by Jim Highsmith

WALKER LEADING THE SECOND ROPE RIGHT BEHIND ON MY HEELS. JIM HIGHSMITH SWEEPED UP THE STRAGGLERS.

FIVE AND A HALF PITCHES OF FANTASTIC ROCK CLIMBING TOOK US UP THE "INDECENT EXPOSURE"



"The Group" on the Summit of the Thumb. Photo by Kyle Williams

ROUTE, UP LAYBACK AND JAM-CRACK CLIMBING, THE "TREE PITCH" (TREE CLIMBING-WE DIDN'T TOUCH THE ROCK FOR 30 FEET! I FULLY EXPECTED TO RUN INTO A THREE-TOED SLOTH HANGING UP THERE!), "THE TROUGH", WHERE PAUL REMEMBERED THAT YEARS AGO YOU COULDN'T GET IN ANY PROTECTION ANCHORS (BUT THE NEW SPRING-LOADED CAMS MADE IT POSSIBLE NOW. TECHNOLOGY IS A BEAUTIFUL THING.). UP THE CHIMNEY PITCH WHERE MY WATCH HANGING ON MY BELT GOT SMASHED (FAT PEOPLE BEWARE THE CHIMNEY PITCH!)

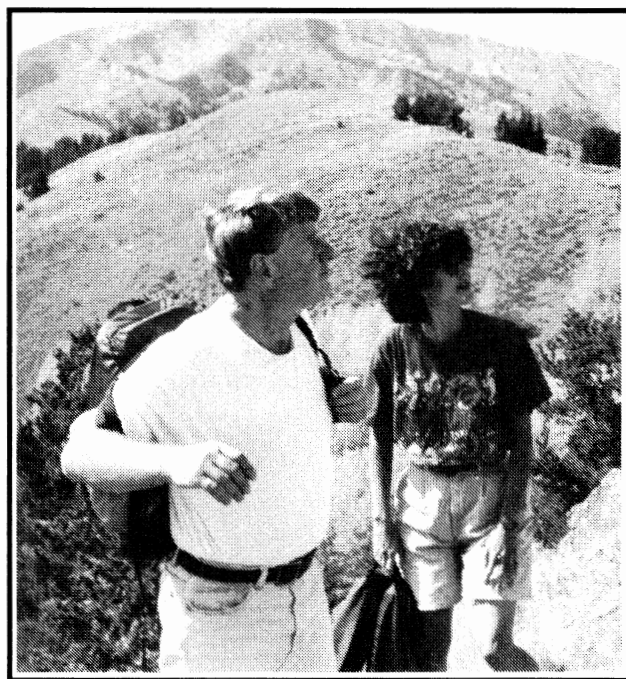
THE FINAL SUMMIT KNOB WAS AN EXCITING, EXPOSED MANTLE MOVE, REQUIRING A VERY LONG REACH. LIKE WIL MCCARVILL ALWAYS SAYS, "IT'S A BEACH IF YA AIN'T GOT THE REACH!"

WE ENJOYED ALMOST AN HOUR OF "MALE BONDING" (READ: TOTALLY DISGUSTING "MANT TALK") ON THE SUMMIT. SPRAWLED IN THE SUN, WATCHING THE LEAVES IN THE CANYON TURN GOLD, TIL IT WAS IMPERATIVE THAT WE RAPPEL OFF THE SUMMIT TO ESCAPE THE GATHERING GLOOM. IT WAS A PERFECT CLIMB. AND NOBODY GOT SHOT!

MURDOCK PEAK

September 19
by Randy Long

Murdock Peak is an intermediate hike although this peak is 9,600' and the highest peak on the ridge between Millcreek and Parley's Canyons (I-80). The ridge ends at the Wasatch Crest ridge about 200 years east of this peak. From here one



Murdock Peak: Gaynell Danielson and John Fakharzadeh. Photo by Randy Long

can see other higher peaks in the area—such as Gobblers Knob and the Uinta's. On the 19th, I led a group up the Great Western Trail from Millcreek Canyon to Park City Overlook, then north and west up the summit ridge to the peak. We found it a little cool, a little windy, but quite enjoyable.

The more popular route eliminates both the very steep climb out of Toll Canyon as well as all those cabins in Lambs Canyon: but because the Forest Service is discouraging hikers from taking this original dirt road route, I chose the Great Western Trail. Participants can now say, "We hiked a relatively small portion of one of our nation's longest trails".

There were quite a few mountain bikers, but they weren't too many or too bad. One couple of bikers teased the group by asking us for a pull, but I had to turn them down. But mountain bikers and numbers aside, we all had a very enjoyable and fun time.

We were a "big six" (or were we a six pack?) of participants, a fair size group and obviously better than the next hike which this leader led to Maybird Lakes. That hike consisted of zero participants.

Participants: Gaynell Danielson, John Fakharzadeh, Steve Holt, Erg Seidman, Tad Mrozoski, leader and scribe, Randy Long.



NORM'S WILDKITTEN

October 4

by Tom Walsh

Trying to write a snappy opening line for this trip talk has got me stumped. That seems odd because I was exhilarated by the hike and ought to have been inspired with poetic and literary thoughts.

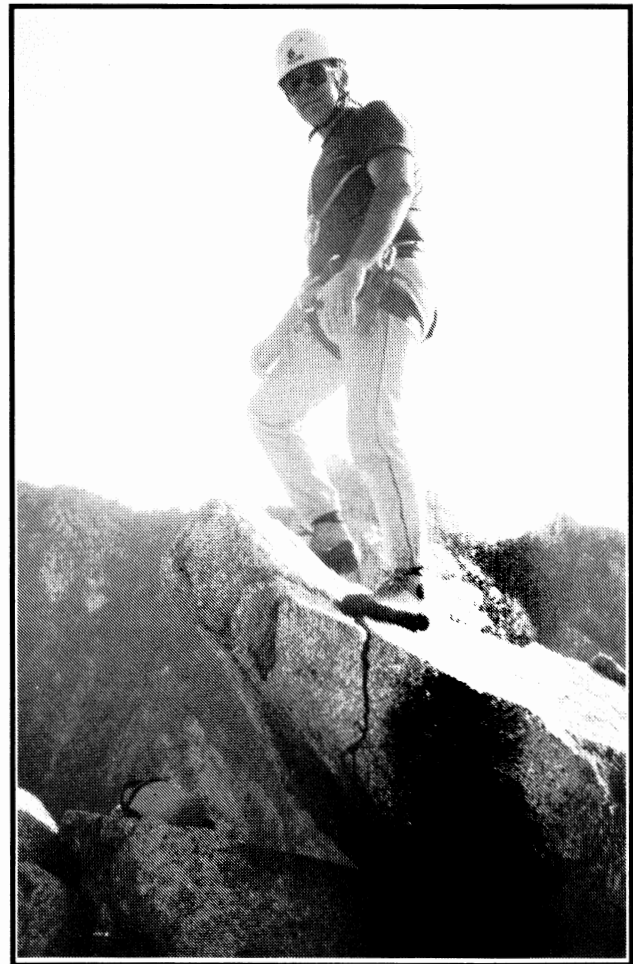
Wildkitten is a tamer and shorter variation of Wildcat Ridge—it covers a portion of the same route but bypasses the most rigorous scrambling. The 'Kitten' goes up Alexander Basin, ascends Gobblers Knob, runs along the ridge to the summit of Mt Raymond, descends westward to the Porter Fork Trail, connects to the Desolation Trail, then droops into the top of Neffs Canyon, and terminates at the Neffs Canyon trailhead near Olympus Cove. It's fun!

From the group of 19 emerged a fast group whose apparent intent was to get some aerobic exercise. The others went slow enough to appreciate nature and absorb more than a fleeting glimpse of the flora and scenery. From the top of Gobblers Knob a chorus of rebel yells and yahoos sounded out to "encourage" those who were still on the trail.

When everyone got together on Gobblers Knob, Norm assigned a sub-leader to be responsible for and maintain accountability for the faster group. Norm stayed with the slower group. The wisdom of having a sub-leader became apparent later. Two hikers who shall be designated as X and Y took off ahead of the fast group. Clouds had moved in and obscured the trail which was faint at best. X and Y sprinted off to a ridge top which had cliffs blocking the way down to the trail. When it became apparent they couldn't go on and couldn't regain the trail without risk, they sat down and waited. After about half an hour of cooling their heels, they heard our group through the cloud cover and shouted at us. The clouds happened to clear just as we were nearly beside them. With a little scrambling and careening on talus, X and Y rejoined our slower group. They weren't exactly lost, but it was close.

Everyone appreciated the hike. Peak baggers liked the idea of getting two of the more prominent peaks in the Wasatch. The length of the hike appealed to those who like longer exertions. We all liked the hiking down Neffs Canyon which (curiously) isn't done very often. We also appreciated Norm Pobanz' good leadership in accounting for the fast, the slow, and the LOST.

Participants: Brian Barkey, Rich Osborn, Monty Young, Karma and Norm Pobanz, Cassie Badowsky, Cheryl Soshnik, Bert Balzer, Tom Munn, Kiara and Lynn Abrahamson, Phyllis Anderson, Ted Mzozowsky, Mike Budig, Katherine Dean, Larry Schuner, Susan Swiebert, L. Jones, and yours truly, Tom Walsh.



Jim Highsmith looking over the world from the very summit of the Thumb.

Photo by Kyle Williams--Article on page 20.

GRAND CANYON EXPLORATORY BACKPACK

October 9-18
Susan Sweigert

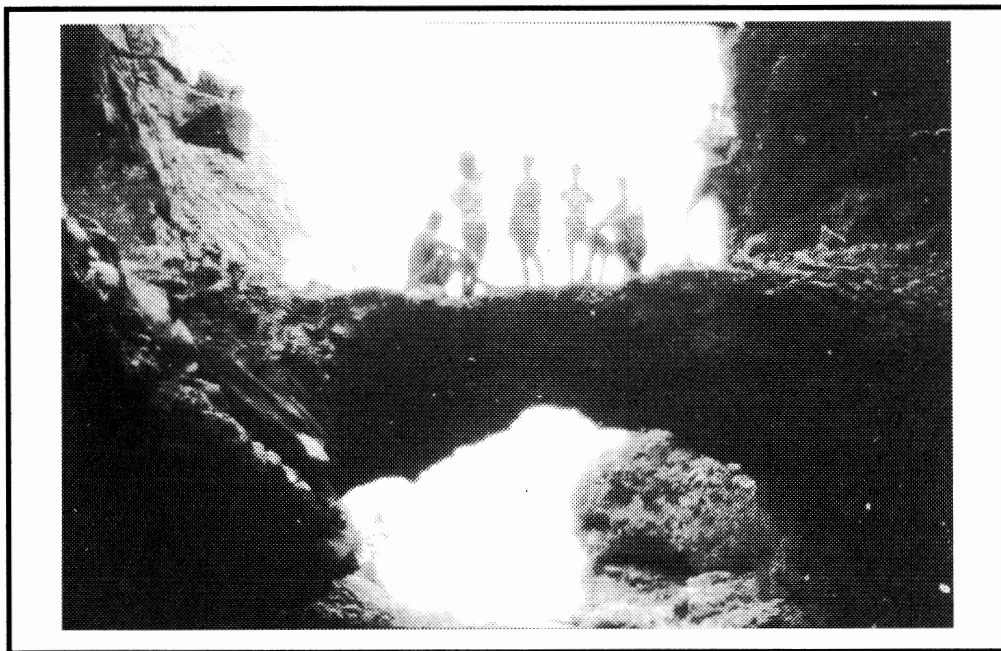
Seven of us left Salt Lake on Friday night and drove down to Coral Pink Sand Dunes. Saturday morning, we visited Pipe Springs National Monument, then headed south onto the dirt road to our trailhead. After a two-hour drive to the trailhead and a four-hour car shuttle. Ken and I rejoined the group at the trailhead on the rim of Tuckup Canyon.

Sunday morning, after an hour's backtracking and scouting, we finally found our way onto a steep trail leading down to the Esplanade. Shortly after reaching the Esplanade, we entered the shallow mouth of Tuckup Canyon, amid lava and basalt boulders and walls. We encountered our first big obstacle fifteen minutes into the canyon, the first of a dozen or so places where we had to lower our packs by webbing. In several places we had to belay ourselves too.

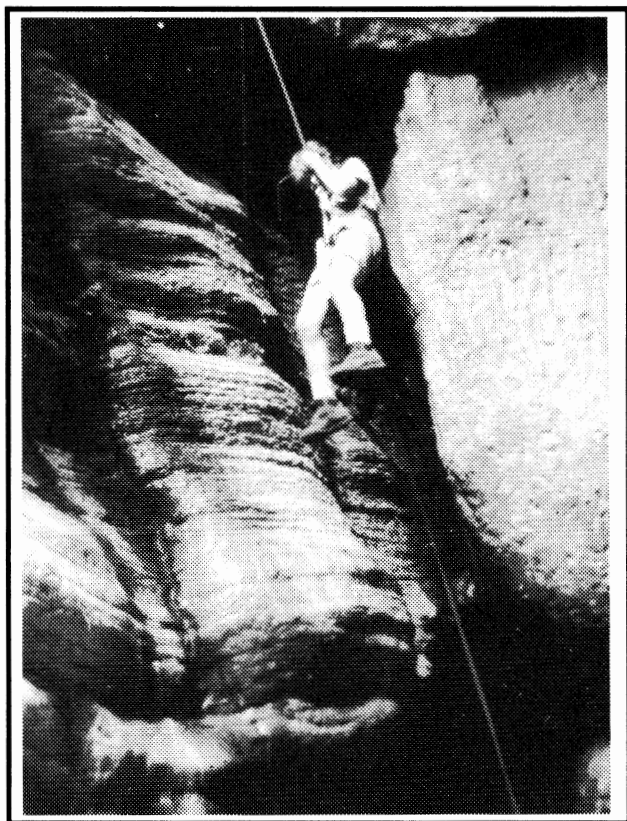
The two days hiking in Tuckup was grand, for most of the way the canyon was well under 100 feet wide all the way to the Colorado. Most of the day the sun barely reached us, but that made for good hiking temperatures although we all had a craving to drink anything we could get our hands on. Luckily there were plenty of seeps and springs with sweet water.

On Tuesday morning we reached the grand finale to Tuckup, a thirty-foot overhang only a quarter of a mile before reaching the Colorado. Ken had been with a group ten years ago that got stopped in this place because they lacked ropes. After searching unsuccessfully all day for an alternate route detouring the obstacle to the canyon, they had to turn back. Thanks to Ken's experience, however, we were well prepared with climbing harnesses, ropes, carabiners and webbing. Though only one other person had any rope experience at all, with Ken's (sometimes patient) tutoring on a nearby slope we all managed to free-rappel down the obstacle. Even the two least-experienced hikers, Melissa Nickerson and her son Elliott, nearly fourteen, came through with fearless attitudes and no trouble at all. In fact, Elliott consistently out-hiked several of us so-called experienced hikers.

The days became really leisurely once we hit the Colorado. We hiked about four miles a day, getting to our next camp around noon or before. That left plenty of time to explore the side canyons or lounge on the beach in the perfect October sunshine--or both. Monty was seen actually resting in camp. In fact, we probably saw more of Monty on that trip than the whole Mountain Club has in the last five years of dayhikes. According to Monty, because of the many obstacles in Tuckup which had to be negotiated as a group effort, he was forced to get



The Group on natural bridge in Tuckup Canyon, Grand Canyon Nat'l Park: Monty Young, Melissa Nickerson, Elliott Nickerson, Susan Sweigert, Ken Workman, Rob Rogowski. Photo by Rob Seeley



Elliott Nickerson "hanging by a thread" or free rappelling! Photos by Susan Sweigert

used to traveling with a group. We hope it wasn't enough to sour him forever on group trips. Other memories: Melissa's hat, Rob Seeley waiting for the wind to stop blowing a grass in a scene he was trying to photograph, "let's go hikin'" Rogowski, bobcat tracks in the mud along the river, and stars between the canyon walls at night.

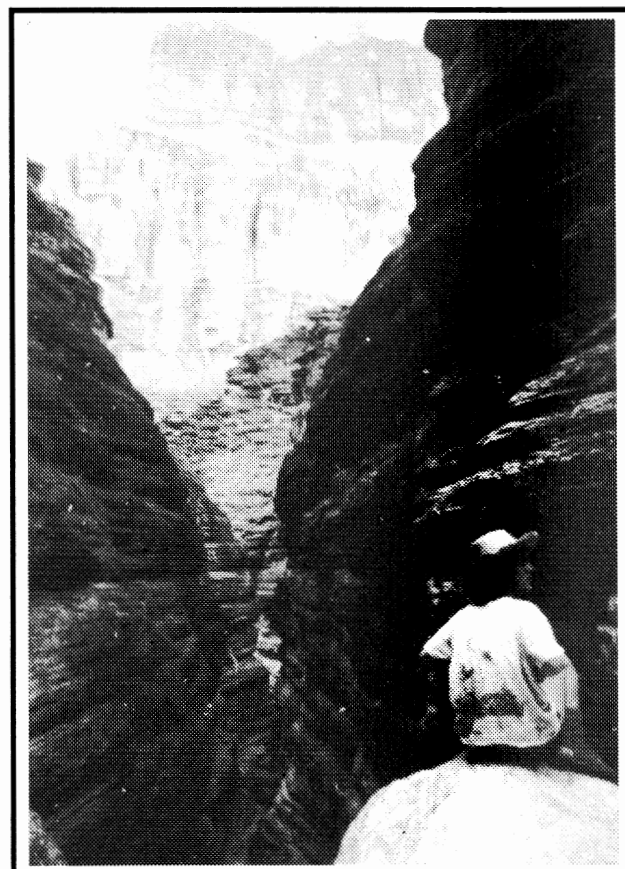
Hiking along the river required alternating between boulder-hopping and thrashing through tamarisk, mesquite, and palo verde: the latter two being extremely thorny. On our sixth and seventh days we got rides from rafters. Friday evening, the next to last evening of our trip, a private group of four or five oar boats stopped at our beach and asked if they could camp there, then offered us a ride to Lava Falls, our next destination. The group was virtually a movie crew, headed by a Swedish photographer who appeared to have more cameras than boating gear and food put together. After elaborate preparations, they filmed and photographed all of their boats through Lava. A couple of us even got to ride through Lava Rapids with a boat captain who wanted us as ballast and didn't realize how much trouble he

could be in if something serious happened to us, but we weren't about to talk him out of it!

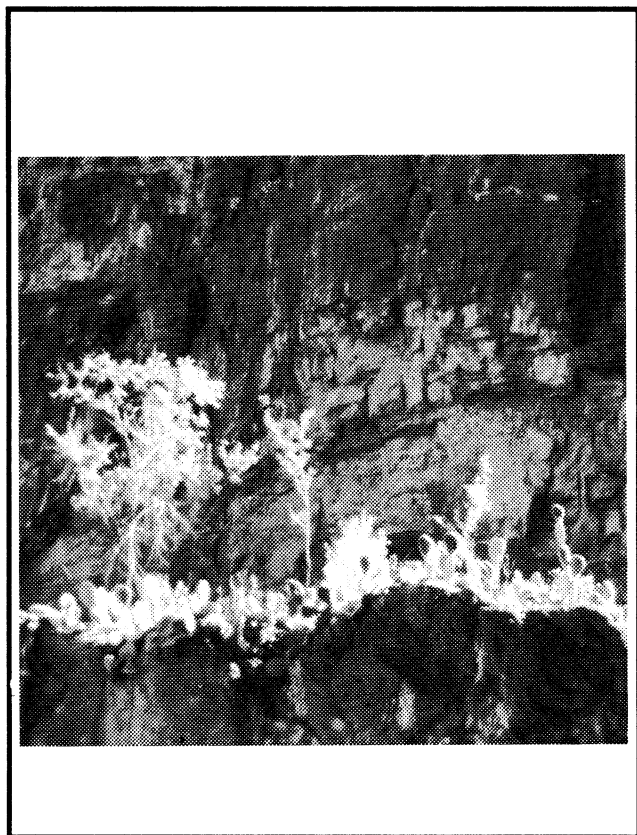
After catching boat rides on two successive days and thereby managing to skip six or eight miles of bushwhacking and boulder hopping, we were hoping to catch a helicopter at Lava so we could also skip the climb out. However, no such luck, so we hauled ourselves out on a very steep and rugged route over volcanic rubble. Fortunately, the brutal route is short, less than two miles. Still, it took us nearly four hours to reach the top and our shuttle vehicle.

From there, it was still ten hours or more until arriving home in Salt Lake, counting the pig-out stop in Kanab. We arrived home tired but grateful for an incredible trip.

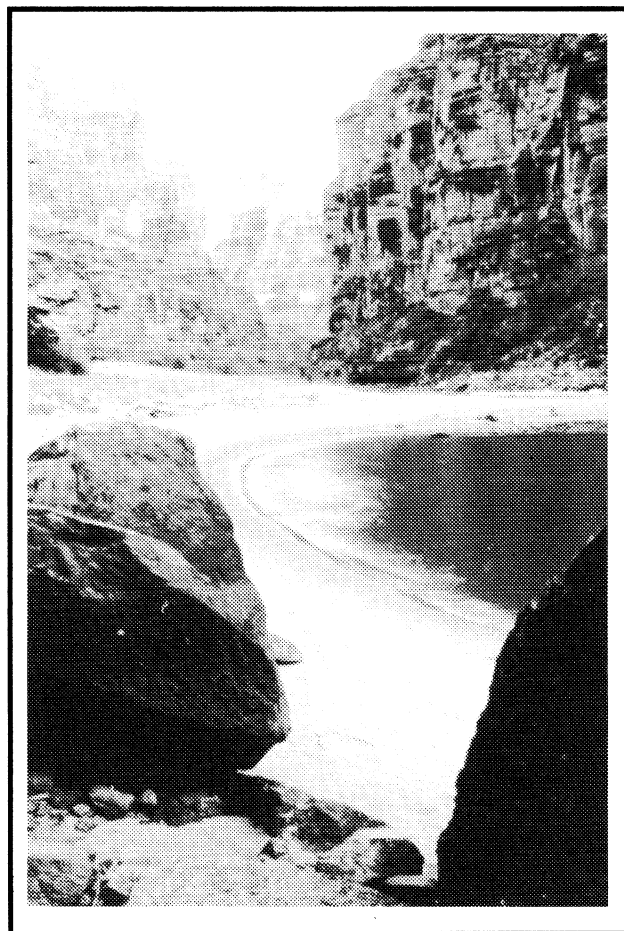
Participants: Ken Workman (leader), Rob Rogowski (speed demon #1), Rob Seeley (photographer), Melissa Nickerson (dainty but rugged), Elliott Nickerson (sand lizard), Susan Sweigert (trip chronicler), Monty Young (speed demon #2).



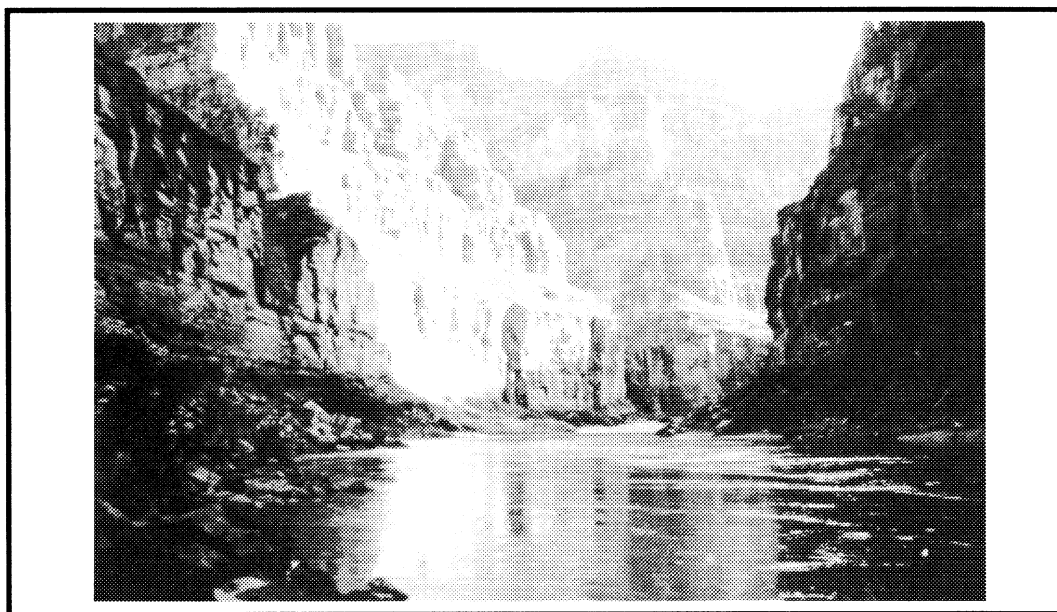
Melissa Nickerson taking a break in the narrows of Tuckup Canyon.



Cacti, wall, Tuckup Canyon. Photo by Sue Sweigert



Evening on the Colorado River while on the Grand Canyon exploratory backpack trip. Photo by Rob Seely



Early morning light on the Colorado River. Trip led by Ken Workman Photo by Rob Seely

MOUNT WHITNEY 1956 AND 1992

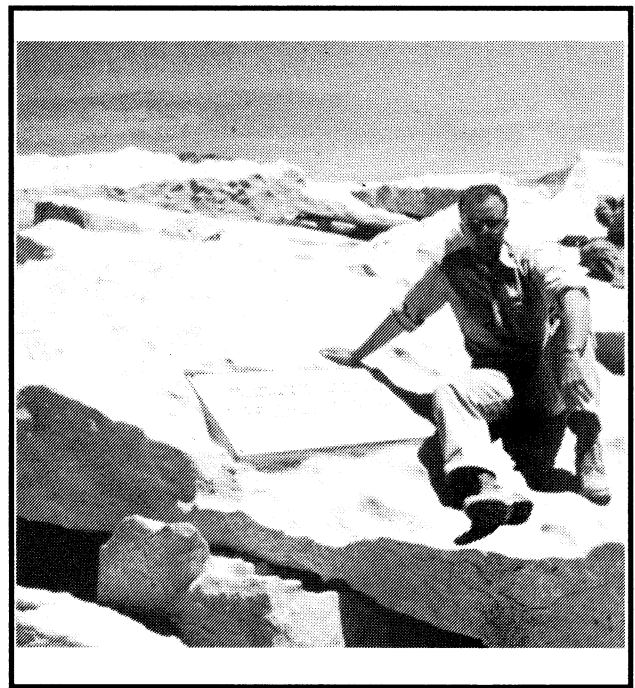
by Dale Green

My first professional job, after graduating from the U. Of U. in June, 1956, was with a aerospace firm in Los Angeles. After only a few weeks on the job I had already determined that L.A. was not going to be my permanent home and decided to climb all the peaks I could before returning as soon as possible to Salt Lake. Primary on the list was an ascent of Mt. Whitney, the highest in the 48 States.

With my first paycheck, a new pair of boots was purchased, to replace the ones of Korean War vintage which the Air Force let me keep upon mustering out. The rest of my hiking clothing was mainly my original-issue khaki uniform, still in good shape, and other war surplus. Instead of a pack, an old plastic 'leatherette' camera bag sufficed which contained a lunch of mostly candy, a tin of tuna fish, and a glass mason jar for water. (One could drink from the streams in 1956).

Lone Pine was very small, requiring a trip to Bishop for dinner and to buy a hamburger to eat for breakfast, as no stores were open where one could purchase more appropriate food. At Whitney Portal parking space was very restricted, nothing like it is now, and that night's sleep curled up on the back seat of a car parked on a slope, was almost non-existent.

On my first really big hike with the Mountain Club in 1954, up Lone Peak via Bells Canyon, leader Caine Alder instilled in me the importance of a slow but steady pace for such hikes. The lesson was one of the best I ever received. Arising before dawn, the summit was attained in mid-afternoon after 8 1/2 hours of virtually non-stop "Caine Alder plodding." The hike down, driving back to L.A. and reporting to work at 7:30 the next morning was an experience reserved for the young and restless.



*Dale Green, Mt Whitney, California
July 8, 1956*

Although I revisited the area a few times in intervening years, I made no attempt at the summit. With my retirement in June, 1992, what better place and time than Whitney could I pick to commemorate the start and finish of my professional career, a span of 36 years? This time it could be done in the company of many Mountain Club friends, lead by an ever-patient Frank Atwood.

A proper carbo-loaded dinner, a motel room, and a full breakfast preceded this year's hike. With Frank in tow, I started this time at a slightly faster pace than before, with a few more rests, and much interesting conversation along the way. We gained the summit in only 7 1/4 hours, 1 1/4 hours better than my 1956 time. After lunch, we took pictures of the WMC crew on the summit at that time, along with one of me assuming the same pose as my summit photo of 1956. Every Club member who made a serious attempt for the summit achieved their goal. The weather was beautiful, views

(con't on page 27)

MT. WHITNEY 1956-1992

(con't from p.25)

were terrific, and the hike stimulating. The only down side was the large number of hikers on the trail.

My thanks to Frank Atwood for organizing and leading such a complex expedition. I'm sure he

could take several pages describing the events, including a trip to Boundary Peak, Nevada, a few days later. Also, I want to express my appreciation at being able to belong to the greatest hiking organization in the world through all these years - TEAM WMC!



WMC members on Mt Whitney, California July 25, 1992.

Photos by Dale Green

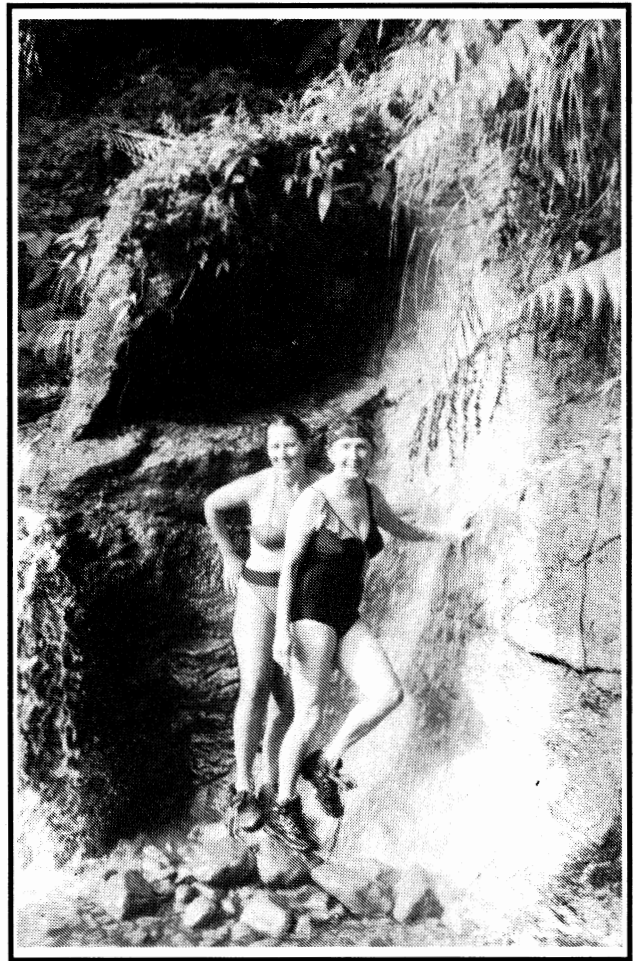
BOILING LAKE (A land Adventure on a Sea Voyage)

by Mike Treshow

From the moment we dropped anchor in Roseau we heard about this unusual lake, deep in the remote mountains of Dominica, filled with boiling water. We wondered, was it actually boiling? The guide book said it was; the local guides all claimed it was! It also said the hike to this rarity was "a true adventure for the truly adventurous...very strenuous and should be undertaken only with the help of a local guide". Truly a tempting challenge! But how could we get in a 7 hour hike and sail to Portsmouth in the same day? Our Captain, Bob Sherer solved our dilemma with this solution. Our guide could take us to the lake and afterwards, we hikers could be driven and dropped off at Portsmouth while he and a skeleton crew sailed there.

Alas! Without any excuses left to forgo this adventure, six of us found ourselves driving on a hazardous, narrow, winding road cut through jungle forests to the trailhead in Titro Gorge, a small, but striking cleft carved from molten lava. The trail quickly topped a ridge before dropping steeply to Trois Piton River (meaning three peak rivers), a perfect stop for the quick amongst us who dipped hastily in one of the crystal pools.

Thence began the long, slippery, steep ascent to the summit of Mourne Nicholls and its elfin woodland. The threatening skies parted off and on, only long enough to see only glimpses of summit tips silhouetted through the filmy cloud wisps. From a narrow side canyon in the distance, a spectacular rising cloud of steam became apparent—aha—our final destination. But to our dismay, the lead guide informed us that we were still an hour and a half away.



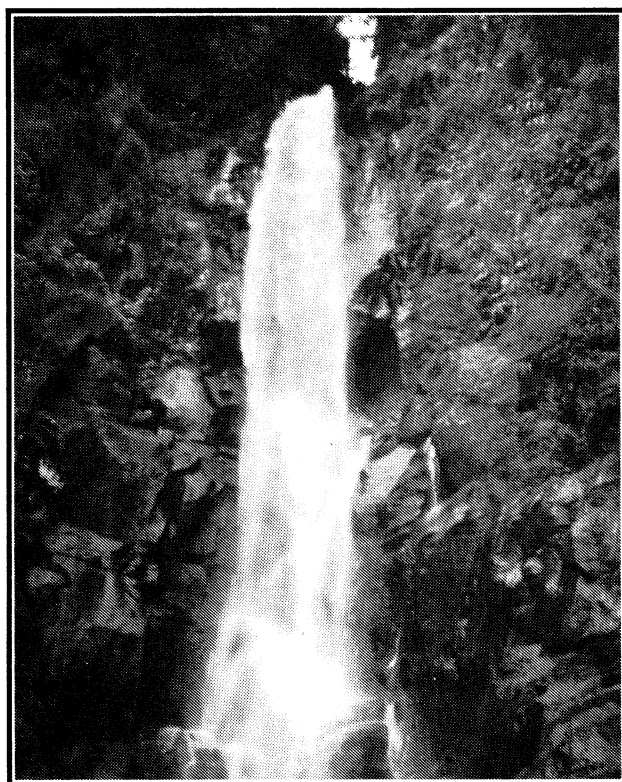
Barbara Dazendrock and Jean Frances enjoy the hot and cold springs bath and swimming area at the end of a good day of hiking.

The trail then descended precipitously into the Valley of Desolation, an eerie and barren area of green, blue, orange and white mineral deposits and chalky white and black streamlets converging and separating between the still warm molten lava. Here and there steaming sinkholes hissed and bubbled emitting an overripe egg smell that had us "hot-footing" it over some precarious thin crusted areas. Beyond the plume of sulfurous fumes, the trail, more lush with green tropical vegetation, ascended the final pitch to Boiling Lake—the largest such lake in the world. Usually enshrouded by its own cloud of steam vapors, some brisk breezes cleared the air intermittently for short periods to reveal the humungous bubbles that constantly boiled in the center of the caldron.

(con't on page 29)

The hike back seemed briefer though no less arduous, but little did we suspect the treat our guide Octavious had waiting for us. Just around the bend from the trailhead, hot waters originating in Boiling Lake cascaded forming a smallish waterfall along side another but cooler waterfall from another source. An adjacent stream flowing through a cavern merged and mingled around the falls. Here our group of pretty weary hikers refreshed alternately in hot and cold water and swam up into a jungle cavern. Now the really hard and more dangerous part, the awesome drive out of the mountains along ocean cliffs to Portsmouth where Sir Doilet lay waiting at anchor.

Experiencing this hike were: Val Searle, Bill Adams, Delia Tucker, Barbara Dazenbrock, Jean Frances, and myself Mike Treshow.



Trafager Falls found and enjoyed on Dominica



Boiling Lake from a far, far distance. Photos by Jean Frances

AT SEA IN THE CARRIBBEAN

July 17-August 1

(Editor's note: this is the second installment for this trip involving 29 Wasatch Mt. Club members under the direction of Sailing Coordinator Vince Desimone.)

Monday, July 20, Les de Saintes — again a lovely morning. This is the rainy season, so showers are frequent — but welcome. Humidity is high, of course, and such a change from the arid climate we are used to in Utah. One's clothing never feels quite dry but then we don't wear much of it! Bathing suits, shorts and tops are de rigueur. Some of us have been more diligent in using coverups, sunscreen, hats and glasses; already some are badly sunburned.

We had hoped to visit the quaint, attractive looking village which our guidebooks describe as one of the most charming French towns in the area, but our delay in getting out of Pointe-A-Pitre requires that we leave early. However, we've been assured that time will be available on the return leg of our journey.

The island of Dominica is the destination today — brisk winds provided speeds up to 6 or 7 knots for the monohulls and over 8 for the Cat. Those riding on the Cat were dismayed to find the cable on the steering mechanism broke necessitating that Capt. Bob Sherer use a manual device to control our direction. The sails had to be hauled in and they motored into an anchorage off Portsmouth in Rupert Bay on the norther nend of the island.

Boatboys immediately approached enmasse to offer their services in anchoring, fetching and delivering whatever we might need, arranging for tours, etc. They are friendly, lively, very good natured; there is quite a contest to see who can get to our boats the fastest by swimming out, paddling a surfboard, rowing mightily to beat out the more prosperous fellows who have motor power. Bargaining is natural, although the rate of exchange is such that you almost feel ashamed of taking advantage.

After seeing that repairs were underway for the cat, the captains went into town to see to customers and emigration (Dominica is a British Island) while their crew members shopped and went sightseeing.

One of the recommended tours was up Indian River which was peaceful, quiet and very old. Large, intricate root systems of the trees made spectacular designs; there were small crabs on the trunks, kingfishers in the trees and doves calling. We docked on a bank to find a small

makeshift bar with some dubious homemade brew for sale with handmade craft souveneirs. The tour included a walk through a plantation which had 5 species of bananas, a cashew tree, mango, guava, breadfruit and breadnut trees as well as some native plants similar to our potatoes and squash.

Today was Bill Adam's birthday; his sweetie Val had arranged for a surprise party on Sir Doillete so Captain Bob and Barbara Dazendrock had skipped the river tour to do some decorating. On the way back to the Cat, tour guide Andrew was the first to notice ballons strung up some of the mast guy wires and gleaming lanterns. His eyes lit up as he exclaimed: "Looks like someone is having a party."

Most everybody congregated on the Cat to celebrate the occasion, share treats, cheer Bill on as he blew out candles on a chocolate cheese cake and down the fruity rum punch which Barb D and Linda Wilcox had mixed up in some large cooking pots. OHHHHHHHHHHH that punch! It packed a wallop; the crew of Sir Doillet kept adding juice only to the original mixture for days before it was finally gone.

Tuesday, July 21: All four boat sailed in good time towards Roseau, the capital city of Dominica. Vince and Linda Desimone transferred to the Cat for the day, leaving Gill Gilligan to captain the Moina. The steering mechanism on the Cat broke again so Vince got more "butt" experience than he bargained for that day.

We put in at the south end of the bay near the Anchorage Beach Hotel. Dave Townsend, captain of the West Pole, had arrived earlier enough to arrange for a tour to The Emerald Pool and Trafalgar Falls. Three minivans took us up winding and steep mountain roads into the rain forest.

A deep green, cool jungle path lead to a goodly sized pool formed by a waterfall some 40' high. Many of our group stripped down to splash in the fresh water. Next stop was Trafalgar (named after a famous British naval battle in which Admiral Lord Nelson defeated a French fleet). The falls were reached after a steep hike up a concrete roadway, then a muddy jungle trail and finally scrambling over a series of large boulders to reach hot and cold water tumbling over ledges and rocks or gushing out of the mountainside into various sized pools.

(con't on page 31)

Sulphur colored one side of the falls golden; the hot water came from the "Boiling Lake" which was just over the mountain and the cold water from inland streams and lakes. One of our guides told us Domenica has 365 rivers, "One for every day of the year." Indeed, exporting water to some of the other Caribbean islands is a major revenue source for Domenicans.

Wednesday, July 22: shopping at the Roseau open air markets for supplies, finding a bank and the post office, general sightseeing took up most of the morning. Divers and snorklers headed for a scheduled trip to Scott's Head, while the remaining members of the group took a leisurely swim, had naps, read those books, and other vacation type pursuits.

On the return trip from Scott's Head, a school of porpoises accompanied the dive boat — those who witnessed the fantastic playful display of these marine animals claim it as one of the highlights of the whole trip.

Dinner over, some divers elected to return to the sea for a night dive, reporting a large octopus, squid, a huge sea turtle, puffer and airplane fish among others. Some of us headed for the night life on shore where a live band was playing at the Sisserou Hotel. Actually, reports Linda, one did not have to be at the hotel to hear the music as the decibel level was inescapable well out to sea. Rain showers peppered the intrepid few who ventured out on the dance floor to reggae or "I shot the Sheriff" — a number that was repeated several times.

Thursday, July 23: Off to Martinique, accompanied by brisk winds, some rain spatters and warm weather. Although we did not see any more porpoise, there were a great many flying fish.

The north coast of Martinique is green, lush and mountainous. Mt. Pelee is impressive with its horizontal blown-off top. In May of 1902 St Pierre, once the capital of the island, was on the receiving end of Mt Pelee's contents when the volcano erupted and less than an hour, completely covered the city in fire, smoke and ash, killing all 40,000 inhabitants except for one lucky soul deep, in a dungeon and the captain of a ship in the harbor — or so the story goes.

Friday, July 24: most of the group headed towards Fort-de-France, largest city and capital of the island. Those early enough on the dock were greeted by a courtly gentleman who presented men and women alike with a

red hibiscus as a welcome to Martinique. We caught mini buses for the trip as there is no formal public transportation on the islands. Men buy vans, mostly Japanese make, and tool around the roads looking for passengers; before entering the "bus", one needs to check on the driver's final destination and the current price else find yourself at some place you didn't want to go and most likely having to pay a premium to get back.

Fort-de-France is a large, bustling city with museums, a very old fort, still active and maintained by the French government, old churches, an intriguing cemetery as well as the beckoning souvenir shops. Snack foods, the open air markets, French pastries and ice cream were sampled. Most of the catamaran crew took a ferry ride to an extremely popular destination resort area, Tatse Marin, for lunch and to explore a possible future anchorage — this may be too ritzy for our motley crew!

Saturday July 25: a hiking day with Mt. Pelee as the destination. We piled into vans for a short ride to the Morne Rouge base shelter. Mist shrouded the mountain as we started up the steep muddy trail — and continued intermittently through the entire day. Trail markers, rocks splashed with red, yellow or green paint, periodically guided us, except we weren't quite sure where the various colored trails led as directions were given in French.

Reaching the first rim of the volcano, we found a rock shelter then followed the trail along a ridge until we hit another steep up to a second shelter. This second building contained a table with a candle and matches as well as four bunk beds in a side room — all extremely wet. After some confusion as to what trail would lead to the second dome, we ventured down a fissure into the caldera, then up, up, up again scrambling over rocks and muddy patches. Once in a while the mists would clear — but all we said was more vertical. Looking back, we occasionally glimpsed the sea.

Mike Treshow, Jean Francis and Ali Watson made it to the 1902 Dome which Jean recorded as 1,987 meters. Barbara Dasendrock, Ray Wingar, Delia Tucker and Vince Desimone went up the alternate peak which was 17 meters lower.

This particular hike was made more exciting because of the fumaroles just off the sides of some parts of the trails. We had been warned to stay on the trails since vegetation often looked solid but in fact might cover a very deep hole; some hikers have lost their lives by falling into these.

YELLOWSTONE IN THE WINTER

by Trudy Healy



Yellowstone in winter's overcoat is surely an exceptional place, yet I have never been there when the snow's been good. But one visits this park less for its quality of skiing than for the wonders of the animal world and the geyser basin. When the weather is cold, as it usually is in Yellowstone, the steam from the hot pots builds up in thick, dense, billowing white clouds.

It seems strange to ski around herds of bison, or watch them chew their cuds in the warm, and often snow-free basins. Bears, of course, hibernate and moose have gone to lower swampy areas where they browse on willow; but there are coyotes and elk, and hopefully, wolves again.

My best ski trip to Yellowstone was a tour with the Museum of Natural History of the University of Utah, led by Ted Major of the Teton Science School and State Geologist of Utah, along with Genevieve Atwood. With these two outstanding advisors/lecturers, we learned a lot about the plants, animals and geology of Yellowstone. Also, Genevieve was the most avid skier of the group, and while many of the others warmed up by the fire after the tour of the day, she and I undertook some extra little jaunts. On one of these excursions at dusk, we got scared by a mama bison and her baby.

On this trip, TV Channel 5 sort of hung around us, filming the instructors, the group, geysers and animals. After one geological talk by Genevieve at the Grand Canyon of Yellowstone, the head TV guy, Tony, interviewed me. Later, while skiing along a snowy road, practicing my diagonal stride, Tony and his camera, riding on a snowmobile, drove right next to me, filming away.

"Why me?" I asked somewhat irritated. "We have many young and pretty girls along in our party--they would make for a much more attractive scene than little old me!"

"Perhaps," Tony grinned. "But you look better skiing."

When I saw the presentation on television, I didn't recognize myself. As soon as the interview was over, I asked George, "What did that woman say? I couldn't understand a word! What a thick accent!" I didn't realize I was watching and listening to me or that I had never lost my German accent. Neither did I recognize it was me doing the diagonal stride along a wintry road; I didn't look half bad.

CONSERVATION COMMENTS

Deaf Smith Canyon, (8800 South and about 3700 East), also known as Little Willow Canyon, and Hounds Tooth, (about 8000 South), have fallen victim to a bad case of trail head access problems.

Except for the first 1/4 mile, which has been private ever since mining days, these areas are mostly on Forest Service land. Until recently, this property has been undeveloped and open to hikers and walkers, which has not been a problem. But last spring, a Mr. Larry Walker purchased this land and has blocked every single access point with chain fences and "Positively No Trespassing" signs. He may be planning on **developing** the area. At least he threatens to. This would be a disaster. (OH! NO!).

I live right below one major access point at 8620 South and became outraged at the blocks as soon as they were put up. A petition, which I have a copy of, was passed around to several homes in the neighboring subdivisions. Several people signed it and a meeting was held with the Salt Lake County Commission on Nov. 4. I notified several people (including several WMC members) and there was a good turnout; but Mr. Walker did not attend. The Commission told us that this isn't a big enough issue to warrant a hearing; it could also be a long, drawn out battle also. They did, however, let several of us speak, including myself. They told us they would call Mr. Walker and have a talk with him, that nobody would be fined or prosecuted for going beyond his signs' and before any permit for development was issued, he would be required to provide easements for trails. This is also a very important wild life habitat as was noted by petition spokesperson Dr. Don Olson. Should Mr. Walker get his way, this could set the worst precedent we have ever seen as there are several other trails currently in similar situations.

If you too are outraged, and hopefully you will be, call the County Commission as soon as possible. And above all: **STAY TUNED**, as I'll do all I can to report on further developments.

Randy Long

Dear Editor:

"It's a done deal." That was the bottom line of the Wasatch Front Forum, Tuesday, Oct. 13, detailing "many developments recently in the foothills about the U of U and Red Butte Gardens". After the social hour, four of the six panelists—Director of Red Butte Gardens and Arboretum, Mary Matheson, Wasatch-Cache National Forest District Ranger Mike Seig, U of U Director of Community Relations Rick Reese, and Westminster Associate Professor of Biology Ty Harrison—blatantly blabbed the audience into drowsiness with glad-handing justifications for expansion and development of Red Butte Gardens. Just about time to stifle another yawn, Rick Steiner, the sixth panel member and U of U Associate Dean of the Graduate School, struck a popular chord with the audience when he voiced opposition to further encroachment in the foothills, most particularly to miles of planned chain link enclosures. His remarks drew loud applause and set the tone for the question-answer session.

Hands waved, anxious to be acknowledged. Former legislator Frances Farley pointed to a watercolor rendering of the new visitor center, a multi-storied monolith that looked every bit like a new hospital wing, and voiced her anger that the University would permit such an intrusion into the foothills. And who paid for this edifice? Not to worry, said Matheson, private donations financed it.

"What next, a concession stand and gift shop?" said a member of the audience, rather sarcastically, I thought.

Another person pointed out that fencing off a greater portion of the stream would make water increasingly inaccessible to animals and asked if the preservation of wildlife habitat figured into the Arboretum's plans.

(con't on page 34)

(con't from page 33)

From the back of the room, a quiet young man expressed concern for the displaced deer, whose habitat was being "whittled" down piece by piece.

An angry voice piped up on the all important issue of public input, something that had apparently lost its way in the process: to whom were these empire building visionaries bent on taming Red Butte accountable?

And what of the issue of public access to public lands?

At 9:45, the moderator, prematurely, it would seem, adjourned the meeting.

Did this bombardment dent the panelist's composure? Not a whit. It washed off their stridently insensitive skins like oil from water.

What came out of the Forum was a sense of powerlessness, of heads knocking against a brick wall of indifference... and contradictions: of teaching environmental education in a controlled and artificial setting, and of stressing the importance of sensitively blending the visitor center into a landscape scarred by chain link fence. The very controversial nature of the many changes in store for Red Butte went unacknowledged: public opinion wasn't on the agenda.

The shoveling of information fostered more frustration than understanding, underlining the need for a tangible forum of expression.

Stephen D. Youngkin

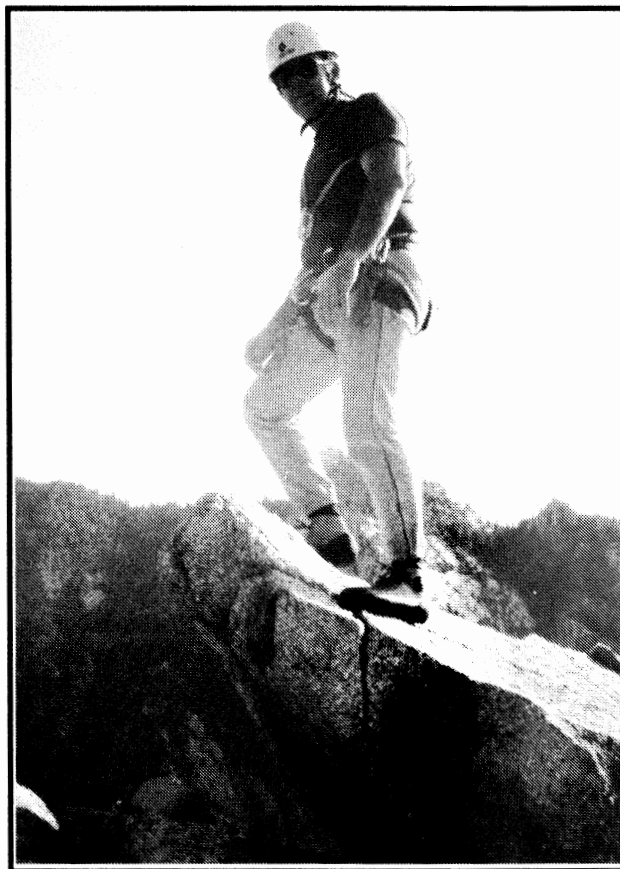
FROM THE EDITORS:

In submitting articles, our operations have expanded, having the capability to translate many programs. Therefore, send us your floppy **and a hard copy**, (in case your program is one that does not compute).

Please, oh please, **do not** type in caps on your disks. It requires retyping it in the computer, which is too time consuming and it's harder to read. If you send in typed copy only, use double spacing.

All pickups for disks, photos, etc., will continue to be available after you've received your *Rambler*. They will be returned to the "**red container**" (not to be confused with the blue one for drop-offs), out by the front door of Chris Baierschmidt at 1398 E. Downington (486-2529). If you have material from past issues to pick up, call Chris or go by her home and check the "**red container**."

Help us and help yourselves by picking up your disks and pictures after the *Rambler* has come to you.



Jim Highsmith looking over the world with a triumphant grin from summit of the Thumb. Photo by Kyle Williams.

UTAH MUSEUM OF NATURAL HISTORY

presents

HOT SPOTS IN COLD PLACES A JOURNEY THROUGH ICELAND

Visit the world's "hot spot" of geological wonders! Iceland has it all: ice caps, glacial rivers, active volcanoes, thermal areas, hot springs, some of the most impressive waterfalls on earth. Stand on the spreading Mid-Atlantic Ridge, swim in a natural hot spring, wander through the weird volcanic formations of Dimmurborgir, and hike on a glacier. See some of the world's youngest rock, learn more about the continuing evolution of our planet.

This trip will also explore Iceland's major ecosystems and will include a visit to Lake Myvatn with its incredible diversity of waterfowl, Icelandic history, and a look at Iceland's current reforestation efforts.

Cost: \$2999 includes instruction by leaders and Icelandic guides, meals and lodging, ground transportation in Iceland, all taxes and tips, and round trip airfare from JFK Airport (NYC) to Keflavik Airport (Iceland).

Limit: 14 participants

For more information and a detailed itinerary, contact the U of U: Utah Museum of Natural History, SLC, Ut 84112, or phone (801-581-4887).

IF

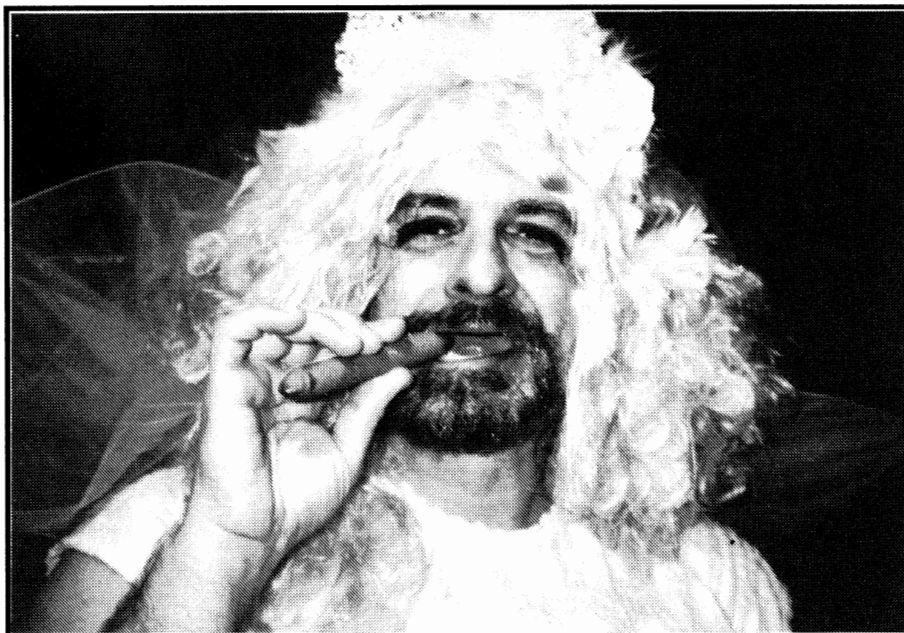
YOU ARE INTERESTED IN THE UTAH WINTER GAMES CLINICS

THE 1993 UTAH WINTER GAMES WINTER SPORT CLINICS Will Be Presented At Little Or No Cost To Give Everyone A Chance To Participate.

PLEASE CALL AND LET US KNOW IF YOU PLAN TO ATTEND: 974-4515.

DATES OF THESE CLINICS:
CROSS COUNTRY: DEC.5
SKI ARCHERY: DEC19
BIATHOLON: DEC 19

For More Information On Times/Places
Call (974-45115)



For the grossest Halloween Party costume: the winner is.....Mike Eisenberg (Fairy Princess costume).

Photo by Kathie Keeler



WASATCH FRONT FORUM

The Future of Albion Basin: Can It Be Saved?

Tuesday, December 8, 1992
First Unitarian Church (569 S. 1300 E.)
7:00 - 7:30 social hour
7:30 program

Albion Basin is a jewel set beneath craggy peaks. In summer, it hosts an amazing variety of wildflowers. In winter, it provides the world's best snow and challenging terrain for nordic and alpine skiers. Hikers, picknickers, photographers and campers come from nearby and around the world to enjoy its trails and spectacular scenery.

But -- there is much private property amidst the National Forest lands, and it is easy to envision encroaching development. City of Alta Mayor Bill Leavitt will talk to us about his concerns for this area, and Salt Lake County's Steve Jensen will discuss his recently completed wetlands study. Representatives of the Forest Service and Salt Lake City's Public Utilities Department will express their views on management problems. There will be an opportunity to ask your questions and share your thoughts about the issues involved. To begin the evening, Pam Poulson, Manager of Environmental Education of Red Butte Gardens, will narrate a short slide presentation showing the various habitats in the area and why Albion Basin is so unique.

This is one in a series of meetings sponsored by the Wasatch Front Forum, a newly formed organization created to provide a forum for Utahns to learn more about the natural history of the Wasatch Front and the legal, political and social issues facing public land managers and local governments. WFF is not intended to provide public hearings on projects, but rather to involve interested people; it will enable you to find out more about what is going on in our nearby mountains and to ask questions about new proposals. WFF is supported by the Utah Chapter of the Sierra Club, the Wasatch Mountain Club, Great Salt Lake Audubon, The Utah Nordic Alliance, the Utah Wilderness Association, and the Citizens' Committee to Save Our Canyons. Watch for notices of future meetings.

If you have any questions or are interested in helping the Wasatch Front Forum,
or if you want to be on the mailing list, please call Tom Berggren or Ann Wechsler at 363-9621 (Sierra Club)
or write c/o P.O. Box 58671, Salt Lake City, Utah 84158-0671

NOTICE!

The *Rambler* cannot accept any ad that is inconsistent with the purposes of the WMC or offends the sensibilities of club members. Send your ad (with a check enclosed if it is not a used sports equipment) before the 13th of the month to Sue DeVall, 11730 South 700 West, Draper UT 84020 or call Sue at 572-3294 for information.

Classified Ads Policy

Members may place classified ads for used sports equipment free of charge. Other classified ads require a \$5.00 donation to the WMC for up to 20 words with \$.20 per word over 20. Words of 2 letters or less will not count as a word.

FOR SALE

Pieps: \$35; **Dynastar Skis--** with Salomon bindings, \$60;

Fischer Skis-- \$35 both good condition. Lyman Lewis (1-649-9632)

BACKPACK: large red Kelty internal frame, \$30. Blue Lowe expandable fanny pack, \$15.

HIKING BOOTS: Fabriano MM 10 1/2, \$30.

XC BOOTS: Asolo Snowfield II 3-pin MM 10 1/2, \$40.

BICYCLE SADDLE: Brooks leather, \$10. Call Bob evenings (487-3477)

XC SKI BOOTS: Asolo Extreme (Pro) with double buckle size 9 1/2. Call Mike (277-0115)

YAKIMA CAR RACK: 48" suitable for cars with rain gutters, \$50. Call (582-0708) after 7 p.m.

SEA KAYAK: Aquaterra tandem model with spray skirt, \$850. **Bow flotation bags** for Perception Dancer, never used: \$20. Call Chet (573-4718)

GIRLS SOREL BOOTS: two pair size 9 fits 3-4 year old. Good condition. (467-1330)

MOUNTAIN BIKE: 1987 Diamond Back Apex 18" Good condition; \$200. Dan at (278-9621)

TELEMARK SKIS: Evolution Moutain Quest 198 cm, voile plate bindings, \$345. Call Jim (582-0902)

ASOLO XC BOOTS: Size 11 MM, too small so \$130 or best offer. John (268-1747)

MOUNTAINEERING BOOTS: Kastinger plastic 9 1/2 M in near new condition. Warm double boots for ice and winter climbing, \$125.

ICE SCREWS: Chouinard/Selewa used but in good condition. Assorted lengths 17-35 cm Call Dave Smith (278-6515) or at REI, (486-2100)

SLEEPING BAG: REI 15 degree rated polarguard regular length with a zipper pillow pocket and draft collar. Near new, clean, \$70. Also Coleman Peak 1 lantern and hardshell case for \$20. Call (572-3294) and leave message.

STEP CLIMBING EXERCISE MACHINE: Helix Executive model in excellent condition for \$100 (1/3 purchase price).

KOFLACK MT. BOOTS: Soft-light plastic to use for ski mountaineering, snow/ice climbing, \$70 is 1/3 the purchase price David at (776-8107)

SNOW SAWS: Made of tempered aluminum with wrist loop. Tested design, \$22. Call Randy (486-3129).

TO SHARE

HOME TO SHARE: Beautiful, secluded contemporary home near Little Cottonwood Canyon. \$400 monthly incudes ALL UTILITIES. Non smokers please. Call (944-0418 or 1-800-688-5431). Ideal situation: principal tenant is gone 6 months per year.

WANTED

WANTED USED SNOWSHOES: Sherpa, Tubbs or others. Leave a message for Kyle (487-9309)

SKY CALENDAR

MOON

First quarter	Dec 01	Dec 31
Full Moon	09	Jan 08
Last Quarter	16	15
New Moon	23	22

MOONRISE:

Dec 5	2:00 pm	Jan 2	12:30 pm
Dec 12	8:00 pm	Jan 9	7:00 pm
Dec 19	3:00 pm	Jan 16	3:00 am
Dec 26	9:30 am	Jan 23	8:00 am
		Jan 30	11:00am

NOTE: Moonrise times are for 40 degrees north latitude, 112 degrees west longitude. Add about an hour for each day later than the given date, and another hour if you are in the mountains.

SOURCE: The Astronomical Almanac for 1992

PLANETS: The bright planet high in the morning sky is JUPITER. MARS is in the constellation Gemini, rising just after midnight: high in the west at dawn. MARS will again pass south of the bright star Pollux going westbound on December 21. I find it interesting that in this particular election year, independently-minded MARS has formed a changing triangle with the twin stars Castor and Pollux, who usually have that corner of the sky to themselves. He's not done yet friends. Keep your eye on this space.

ECLIPSE: A total eclipse of the moon will be ending about sunset on December 9th.

NEWCOMERS WELCOME

Chris R. Soderstrom	Chris Negus
Carol L. Thomas	Cheryl Soshnik
Robert L. Alley	Donna R. Hemberger
Richard W. Clark	Harry Lewis
Kim Braithwaite	Linda Leprean
Shirley Ann Roe	Steven Joy
Marcia M. Mendelsohn	

WASATCH MOUNTAIN CLUB

Membership applicants must participate in at least two Club outdoor or service activities, verified by the signatures of approval from the activity leaders. Yearly dues are \$25.00 single, \$35.00 couple. A \$5.00 initiation/reinstatement fee is charged.

1992-93 GOVERNING BOARD

President	Wick Miller	1-649-1790
Secretary	Betty Cluff	486-8549
Treasurer	Gloria O'Connor	466-9016
Membership	Linda Kosky	943-1871
	Monte Young	255-8392
Boating	Randy Klein	774-6239
Conservation	John Veranth	278-5826
	Marc Hutchinson	355-3227
Entertainment	Carol Beasley	484-6617
	Frank Atwood	299-8264
Hiking	Mike Treshow	582-0803
	Donn Seeley	595-1747
Lodge	Vince Desimone	1-649-6805
LodgeUsers Rep	Scott Harrison	277-9871
Mountaineering	Steve Walker	466-7032
Publications	Christine Allred	261-8183
	Jean Frances	582-0803
	Christine	
	Baierschmidt	486-2529
Ski Touring	Norm Fish	964-6155
	Clint Lewis	295-8645
Information	Barbara Jacobsen	943-3715
	Leslie Woods	484-2338

COORDINATORS

Bicycling	Lade Heaton	466-7008
Canoeing	Jim Brown	359-0754
Trails Issues	Chris Biltoft	364-5729
Kayaking	Janis Huber	486-2345
Sailing	Vince Desimone	1-649-6805
Rafting	Janet Embry	322-4326
Boating Equipment	Tony Ackerman	966-6041
Boating Instruction	Neal Reiland	355-1526
Volleyball	Duke Bush	299-1989
Scuba	Bob Scherer	967-0218
Adopt-A-Highway	Linda/Mark Feller	562-5428
Commercial Ads	Jill Pointer	596-1336

TRUSTEES

Karen Caldwell	942-6065	Term Exp 93
Dale Green	277-6417	TermExp 94
Alexis Kelner	359-5387	Term Exp 95
Mike Budig	328-4512	Term Exp 96
O'dell Peterson	355-7216	Emeritus

WASATCH MOUNTAIN CLUB
APPLICATION FOR NEW MEMBERS/REINSTATEMENT FOR PREVIOUS MEMBERS
RAMBLER SUBSCRIPTION FORM
DO NOT USE THIS FORM TO RENEW YOUR MEMBERSHIP

Please read carefully and fill out completely.

APPLICANT(S) NAME(S) _____

ADDRESS _____ CITY _____ ST _____ ZIP _____

HOME PHONE _____ DAY PHONE _____ BIRTH DATE _____

I HEREBY APPLY FOR

____ NEW MEMBERSHIP ____ STUDENT (30 Years or younger)

____ REINSTATEMENT ____ COUPLE

I wish to receive the RAMBLER (The WMC Publication) YES ____ NO ____

Subscription price is NOT deductible from the dues.

Enclosed is \$ _____ for one year's dues and application fee (Mar 1, 19__ to Feb 28, 19__).

** (CHECKS ONLY) Make checks payable to Wasatch Mountain Club**

Remit: \$20.00 for student membership (\$15.00 dues and \$5.00 application fee)

\$30.00 for single membership (\$25.00 dues and \$5.00 application fee)

\$40.00 for couple membership (\$35.00 dues and \$5.00 application fee)

YOU MUST COMPLETE TWO CLUB ACTIVITIES FOR MEMBERSHIP CONSIDERATION
THE ACTIVITY DATES MUST HAVE BEEN WITHIN ONE YEAR OF THE APPLICATION

QUALIFYING ACTIVITY	DATE	SIGNATURE OF RECOMMENDING LEADER
---------------------	------	----------------------------------

1. _____	_____	_____
2. _____	_____	_____

I agree to abide by all the rules and regulations of the WMC. I am 18 years of age or older. I understand that outdoor activities involve risk, and that I am responsible for determining the suitability of my ability and equipment in advance of participating in any WMC activity. I release and discharge the WMC agents and representatives from all claims for property and personal injury sustained as a result of participation in WMC activities. I am willing to serve the WMC in the following areas (please check):

__ Service Projects __ Lodge Work __ Conservation __ Rambler __ Thur Night Hikes
 __ Hike Leader __ Boat Leader __ Ski Leader __ Social Assistant

APPLICANT'S SIGNATURE _____

(signature required)

I found out about the WMC from _____

MAIL APPLICATION AND CHECK TO: MEMBERSHIP DIRECTOR
Wasatch Mountain Club
888 South 200 East Suite 207
Salt Lake City, UT 84111-4220

LEAVE BLANK

RECEIPT # _____ DATE RECEIVED _____ AMOUNT RECEIVED _____
(OR CHECK#) _____ (LESS APPLICATION FEE)

BOARD APPROVAL DATE _____

REV 9/92

**WASATCH MOUNTAIN CLUB
888 SOUTH 200 EAST, Suite 207
SALT LAKE CITY, UT 84111-4220**

**SECOND CLASS
POSTAGE PAID
SALT LAKE CITY, UT**

Suite 207



**USFS AVALANCHE
HOTLINE
364-1581**