

The Rambler

Wasatch Mountain Club
FEBRUARY



VOLUME 69, NUMBER 2, FEBRUARY 1992

Printed on 100% Recycled Paper

The Rambler

Magdaline Quinlan
Leslie Mullins
Managing Editors

ADVERTISING: Jill Pointer
ART: Kate Juenger
CLASSIFIED ADS: Sue De Vall
COVER LOGO: Knick Knickerbocker
MAILING: Rose Novak, Mark McKenzie, Duke Bush
PRODUCTION: Magdaline Quinlan
SKY CALENDAR: Ben Everitt

THE RAMBLER (USPS 053-410) is published monthly by the WASATCH MOUNTAIN CLUB, Inc., 888 South 200 East, Suite 111, Salt Lake City, UT 84111. Telephone: 363-7150. Subscription rates of \$12.00 per year are paid for by member ship dues only. Second-class Postage paid at Salt Lake City, UT.

POSTMASTER: Send address changes to THE RAMBLER, Membership Director, 888 South 200 East, Suite 111, Salt Lake City, UT 84111. **CHANGE OF ADDRESS:** This publication is not forwarded by the Post Office. Change of Address should be submitted in writing to the Membership Director, 888 South 200 East, Suite 111, Salt Lake City, UT 84111. All correspondence regarding the mailing of THE RAMBLER should be directed to the Membership Director at that address. Allow 45 days for address changes.

The right is reserved to edit all contributions and advertisements and to reject those that may harm the sensibilities of WMC members or defame the WMC.

Copyright 1992, Wasatch Mountain Club.

FEBRUARY 1992 TABLE OF CONTENTS

Twenty-five Years Ago in the <i>Rambler</i>	3
Events At A Glance	9
Activities	10
From the President	20
From the Nominations Committee	20
From the Managing Editors	21
From the Sailing Coordinator	21
From the Scuba Coordinator	22
From the Ski Tour Director	22
Sky Calendar	24
Trip Talk	25
Classified Ads	30

SUBMITTING ARTICLES TO THE RAMBLER

IF YOU HAVE MOVED: Please notify the WMC Membership Director, 888 South 200 East, Suite 111, Salt Lake City, UT 84111, of your new address.

IF YOU DID NOT RECEIVE YOUR RAMBLER: Contact the Membership Director to make sure your address is in the Club computer correctly.

IF YOU WANT TO SUBMIT AN ARTICLE: Articles, preferably typed double spaced, must be received by 6:00 pm on the 15th of the month preceding publication. Mail or deliver to the WMC office or to the Editor. Include your name and phone number on all submissions.

IF YOU WANT TO SUBMIT A PHOTO: We welcome photos of all kinds: black & white prints, color prints, and slides. Please include captions describing when and where the photo was taken, and the names of the people in it (if you know). Photos will not be returned unless requested and accompanied by a self-addressed stamped envelope.

DEADLINE: Submissions to THE RAMBLER must be received by 6:00 pm on the 15th of the month preceding publication. Mail or deliver to THE RAMBLER office or to the Editor. Include your name and phone number on all submissions.

PROSPECTIVE MEMBER INFORMATION

THE RAMBLER, the official publication of the Wasatch Mountain Club, is published monthly by and for its members. Persons wishing to become members may receive THE RAMBLER for two months by writing the Membership Director, 888 South 200 East, Suite 111, Salt Lake City, UT 84111 and enclosing \$3.00. Checks are to be made payable to the Wasatch Mountain Club. There is a \$10.00 charge for returned checks.

WMC PURPOSE

(Article II of the WMC Constitution)

The purpose shall be to promote the physical and spiritual well being of its members and others by outdoor activities; to unite the energy, interests and knowledge of students, explorers and lovers of the mountains, deserts and rivers of Utah; to collect and disseminate information regarding the Rocky Mountains in behalf of science, literature and art; to explore and picture the scenic wonders of this and surrounding states; to foster awareness of scenic beauties; and to encourage preservation of our natural areas including their plant, animal and bird life.

COVER PHOTO: Red Rock Crossing, September 1991. Sedona, Arizona. Photo by Leslie Mullins.

TWENTY-FIVE YEARS AGO IN THE RAMBLER, FEBRUARY 1967


by Dale Green, Historian

AVALANCHE! The dreaded event occurred at 2:30 p.m. on Sunday, January 15, 1967. Eleven out of thirteen people had been swept away, three were buried completely and another badly hurt. A large part of the southwest corner of the Silver Fork Bowl had given away with near disastrous results for those below.

As related by trip leader Charlie Keller, all persons were accounted for within 15 minutes. The three who were buried had been located and dug out and it was determined that the injured man was badly hurt. Three others had lost a ski; one also had a sprained ankle. A group was immediately dispatched to advise the Sheriff of the problem.

An emergency toboggan was erected (a collapsible unit carried by Charlie) and the injured man removed from the avalanche slope before another half-hour had passed. It required 4 hours to drag the toboggan to a point about 1 mile from the Big Cottonwood road where the group was relieved by an advance party of ski patrolmen from Solitude. Seven hours after the accident, Hermann Haertel, the injured man, was on his way to the hospital. It was Hermann's first trip with the Club.


The others, rescued and rescuers, all had stories to relate of exceptional performance by all members of this unfortunate ski tour, one which still lives vividly in the memories of the participants.



**HISTORICAL
VIDEO
PRODUCTIONS**

DIGITAL STEREO

NORM FISH
6309 West Milden Lane
West Valley City, Utah 84120



QUALITY VIDEO

TELEPHONE
(801) 964-6155

Feature Length Historical
Documentary Outdoors
Weddings Conferences
Receptions Video Prints
Editing Wireless Sound



GREAT GEAR FOR WINTER FUN FROM WILD ROSE

SKATE SKIS:

CUTTING EDGE PRODUCTS FOR WINTER FUN AND FITNESS FROM BLIZZARD, ATOMIC, KNEISSL, SALOMON, ALFA AND REFLEX. COMPLETE SELECTION OF RACE WAXES AND TOOLS.

BACKCOUNTRY TOURING:

QUALITY METAL EDGE GEAR FROM ATOMIC, ASNES, TUA, ASOLO, VOILE, AND ROTTEFELLA.

CLOTHING:

TECHNICAL OUTERWEAR AND FUNCTIONAL ACCESSORIES FOR OUTDOOR WINTER ACTIVITIES.

SERVICE:

WE OFFER A FULL SERVICE REPAIR FACILITY. MOUNTING, TUNEUP, DELAM AND EDGE REPAIR, PLUS BASE PREPARATION AND RACE WAX SERVICE.

DEMO & RENTAL:

METAL EDGE, SKATING AND LIGHT TOURING.

WILD ROSE
702 THIRD AVE
533-8671

February Toy Specials

Two locations serving your specialty needs

FOR THE TRACK SKIER



Fischer RCS Skating Skis

Reg. \$400 Now \$320

Rossignol Delta Cobra

Reg. \$250 Now \$199

Reflex Skating Poles

Reg. \$210 Now \$110

FOR THE BACKCOUNTRY



THREE PIN BOOTS:

Merrell Super Comp

Reg. \$575 Now \$475

Merrell Ultra

Reg. \$330 Now \$250

Scarpa Boot Nieve

Reg. \$499 Now \$399

Black Diamond 3 Pin Binding

Reg. \$57 Now \$45

FOR THE HIKER



Merrell Hiking Boots

Selected Stock Clearance
Reg. \$70-\$150 Now 40-50% OFF

Wigwam Socks

We're overstocked!
Save up to 40% on selected models.



Touring Center
Park City Golf Course
Daily 9 a.m. - 6 p.m.
521-2135 or 649-8701

363 Main Street
Park City
Daily 10 a.m. - 9 p.m.
649-8710

Classic Performance!

Save \$151.50 on this Special Purchase Package
WHILE SUPPLIES LAST!

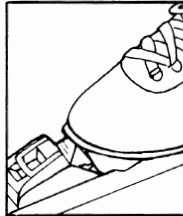
Featuring...



NNN Boot/Binding System

Offers these advantages over older style bindings:

- Better and more comfortable flexibility
- More positive connection between boot & ski
- Greater stability and control
- Easier entry and exit
- Increased durability

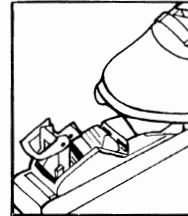


ideal Pivot Point provides the most natural flex and movement.

*NNN / BC Binding Shown



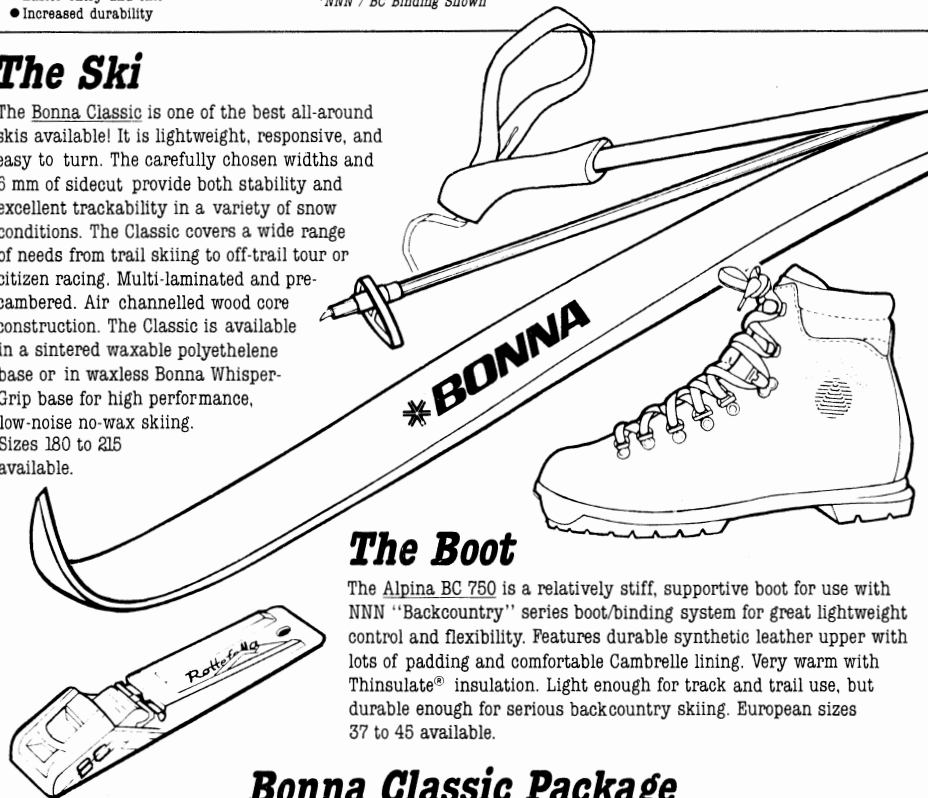
Integrated steering plates on skis interlock with two grooves in sole.



Heavy Duty metal construction on all functional parts of binding provides secure connection.

The Ski

The Bonna Classic is one of the best all-around skis available! It is lightweight, responsive, and easy to turn. The carefully chosen widths and 6 mm of sidecut provide both stability and excellent trackability in a variety of snow conditions. The Classic covers a wide range of needs from trail skiing to off-trail tour or citizen racing. Multi-laminated and pre-cambered. Air channelled wood core construction. The Classic is available in a sintered waxable polyethelene base or in waxless Bonna Whisper-Grip base for high performance, low-noise no-wax skiing. Sizes 180 to 215 available.



The Boot

The Alpina BC 750 is a relatively stiff, supportive boot for use with NNN "Backcountry" series boot/binding system for great lightweight control and flexibility. Features durable synthetic leather upper with lots of padding and comfortable Cambrelle lining. Very warm with Thinsulate® insulation. Light enough for track and trail use, but durable enough for serious backcountry skiing. European sizes 37 to 45 available.

Bonna Classic Package

Bonna Classic Waxable or Waxless Ski.....	139.00	Fiberglass Pole.....	16.00
Alpina 750 BC NNN Boot.....	140.00	Mount & Wax.....	11.50
NNN BC Binding.....	64.00	Regular Price.....	370.00

PACKAGE PRICE

219.00



Kirkham's®
outdoor products



3125 South State Street (801) 486-4161 Open Monday - Thursday 9:30 to 8:00 Friday to 9:00 Saturday to 7:00



OUT BACK OR ON TRACK?

Visit Wasatch Touring for the equipment,
service and information for every
cross-country endeavor.

WASATCH TOURING

702 East 100 South, Salt Lake City, Utah 84102
359-9361

The snow's here...

ONE DAY SKI REPAIR

- Stonegrinding
- Mounting
- Adjustments
- Tune Ups
- Engraving
- Delaminations
- Rentals
- Accessories

S.L.'s #1 SKI REPAIR HEADQUARTERS

SIDSPORTS
SKI AND RAFT SPECIALIST

3025 East 3300 South • SLC, UT
486-9424

Help Build the Great Western Trail

The Project

A local citizen group is spearheading a campaign to complete construction of the Great Western Trail through Salt Lake and Davis Counties. The Great Western Trail (GWT) is a regional trail which will extend the length of Utah, and will tie with similar trails in Idaho and Arizona to form a continuous national route.

We Need Help

The Forest Service is providing technical expertise to lay out and design the trail route, and materials and equipment to build the trail. What we need are volunteers to plan the trail, to supply the labor, and workleaders to help supervise workers. **We need your energy to build the trail.**

The GWT Needs Volunteer Workleaders & Committee Members



Make Your Footprint in History.
Spend some Time Helping to Make
the Great Western Trail Happen
This Summer.

Who Do We Need?

Anyone who has an interest in or talent for Fundraising, Securing Right-of-Ways, Recruiting Volunteers, Publicity, Supervising Trail work or Working on trail.

How Do You Get Started?

For questions and information, contact us at the GWT Hotline (942-8721). Mike Titus, Susan Graffius or another Board Member will return your call.

Your Part

•Trail work may be scheduled any day between June 1 and Sept. 30. The GWT Board of Directors works year round to fundraise, publicize, plan trail routes, clear right-of-ways, and to recruit volunteers. We need more GWT Board Members as well as Workleaders.

Workleaders will:

- Spend 3-6 days supervising parties of 5-10 volunteer trail builders under the general supervision of Forest Service personnel.
- Assure that all stages of trail construction are performed safely and to Forest Service trail standards, and that the route follows intended location.
- Be prepared to have a good time!

GENERAL MEMBERSHIP MEETING AND ELECTIONS



WEDNESDAY, FEBRUARY 19, 7PM

**ZION LUTHERAN CHURCH
AT 1070 SOUTH FOOTHILL BLVD,
DOWNSTAIRS**

**ELECTIONS, AND APPROVING
LIFE MEMBERSHIPS**

**ALEXIS KELNER WILL PRESENT A
PICTORAL HISTORY OF
THE WASATCH MOUNTAIN CLUB:**

THE OLD, THE NEW, AND THE UGLY

REFRESHMENTS WILL BE SERVED

EVENTS AT A GLANCE

SKI TOURS/SNOWSHOEING/ICE CLIMBING

February

1 Scotts Pass
1 Days Fork
1 Wolverine
1 Leader's Choice
1 Bountiful SnowShoe
1 Leader's Choice SnowShoe
2 Leader's Choice
2 Annual Willow Peak
2 Grizzly Gulch
2 Leader's Choice
8 Soldier Fork
8 Empire Canyon
8 Bear Trap
8 Telemark Clinic
8 Leader's Choice
9 Leader's Choice Snow Shoe
9 Desolation Lake
9 Catherine's Pass
9 Red Pine
9 Leader's Choice
9 Upper Greens
15 White Pine
15 Mill D to Little Water
15 Leader's Choice
15 Mill D to BearTrap
16 Days Fork
16 Broads Fork
16 Wolverine Bowl
16 Greens Basin

16 Timpanogas
22 Desolation Lake
22 Teach and Tour
22 Powder Park
22 Mt Raymond
22 Gobblers Knob
22 Broads Fork
23 Dog Lake
23 White Pine
23 Days Fork
23 Leader's Choice
23 Triple Traverse
23 PineBrook SnowShoe
29 Silver Fork
29 MayBird Gulch
29 Leader's Choice
29 Combination Ski & SnowShoe

March

1 Beaver Creek
1 Wolverine
1 Desolation Lake
1 Mt Nebo
1 Leader's Choice
5-9 Yellowstone
7 Scotts Pass
7 Powder Park
7 Brighton
7 Leader's Choice
7 Ophir SnowShoe
8 Spruces Walk
8 Bear Trap Fork
8 Leader's Choice
14 Desolation Lake
14 Brighton
14 Upper Greens
14 Leader's Choice
15 Leader's Choice
15 Leader's Choice
15 Powder Park

BOATING/SCUBA/SWIMMING

February

5 Lap Swimming
8-9 Red Canyon Boating Trip

SOCIALS/MEETINGS

February

8 The Wind River Band
9 The Third Annual As-Close-As-We-Could-Get-To-Valentine's-Day-Social (Without Hitting The Holiday Weekend) Day Social
15 Open Lodge, Winter Work Party with a Music Winter Social
19 General Membership Meeting and Elections

VOLLEYBALL

(Monday evenings at 6:30 PM, at Highland High School)

February 3, 10, 24

March 2

PROSPECTIVE MEMBERS are welcome on ALL club activities, with these exceptions:

- 1) Thursday Evening Hikes are for members only. However, prospective members may attend if the hike is their second qualifying activity for membership and they submit their dues check and application form to the leader before the hike.
- 2) Boating trips are for members. However, prospective members may attend a weekend trip if they use the trip as their qualifying activity (each day counts as one activity.)
- 3) A trip leader may choose to limit a trip to members, especially if there is limited space.

WMC SKI TOUR RATINGS EXPLAINED: **NTD (Not too difficult):** Terrain is mostly gentle. Participants should be able to do a kick turn, snowplow, and descend a slope by traversing. Usually no avalanche danger. **MOD (Moderately difficult):** Proficiency climbing and descending intermediate slopes is required. Pieps and shovels may sometimes be suggested or required. If a pieps is carried, this implies knowledge of how to search for a buried companion. **MSD (Most difficult):** Strenuous. Usually involves long ascents, steep or narrow descents. Pieps and shovel always required.

CLUB ACTIVITIES

Only activities approved by the appropriate WMC Director can be listed in the Club Activities section of the *Rambler*. Send your proposed activity, for approval, to the hiking, rafting, skiing, etc., director for inclusion in their activity schedule. Those activities sent directly to the *Rambler*, without approval, will not be published.

REMINDER

PARKING INFO: CANYON PARKING NOTE: Even days - down side. Odd days - up side Check sign in canyon. **HILLSIDE PARKING NOTE:** Park on the West side of the parking lot, South of the bank.

THANKS!

Feb 1
Sat

SCOTTS PASS WITH OPTION, SKI TOUR, (NTD+) Join Gary Whitney (484-4020) on this tour to Scotts and possibly on to the ridge West toward Solitude depending on snow conditions. Meet Gary at the Hillside Plaza Shopping Center (7000S 2300E) at 9:00 AM. Pieps and shovels recommended and skins preferred.

DAYS FORK INTO BASIN SKI TOUR, (MOD) Mike Hendrickson (942-1476) will lead this tour into the basin of Days Fork. Look for some good powder on the open slopes. Join Mike at the Hillside Plaza Shopping Center (7000S 2300E) at 9:00 AM. Pieps and shovels required and skins recommended.

WOLVERINE PEAK SKI TOUR/LEADERS CHOICE (MOD) Ski with Marty Barth (532-6423 or 486-2345) to the peak and hopefully have good snow for the trip down. Join Marty at the Hillside Plaza Shopping Center (7000S 2300E) at 9:00 AM. Pieps and shovels required and skins recommended.

LEADERS CHOICE SKI TOUR, (MSD) Register with George Westbrook (942-6071)

BOUNTIFUL FOOTHILLS SNOWSHOE TOUR (NTD+) Observe deer and other wildlife in the foothills above Bountiful. Clint Lewis (295-8645) will lead snowshoers there and then offer them cocoa and refreshments at his home. Meet Clint at Lee's Cafe (Bountiful 5th South Exit) at 9:30 AM.

LEADERS CHOICE SNOWSHOE TOUR (MOD) Norm Probanz (266-3703) has moderately difficult snowshoe tours of four to five hours almost every Saturday. The group meets at the Hillside Plaza Shopping Center (7000 South 2300 East). Call Norm for information.

Feb 2
Sun

LEADERS CHOICE SKI TOUR, (MOD) Join Ken and Jane Kelley (649-3520) in the powder hunt and in refreshments at the Kelleys Brighton home after the ski day. Register by the night before. This is a limited tour.

ANNUAL WILLOW PEAK and beyond SKI TOUR, (MOD) Powder skiing in the trees. Join Theresa Overfield and David Morris (359-6274) for this annual event past Willow Lake (across from Solitude) and on to the ridge. Join Theresa and Dave at the Hillside Plaza Shopping Center (7000S 2300E) at 9:00 AM. Pieps and shovels required and skins recommended.

Feb 2
Sun

GRIZZLEY GULCH (PHASE 1) SKI TOUR. (NTD) Join Tom Walsh (969-5842) for phase 1 of this fairly easy tour up Grizzley Gulch to the open slopes below Twin Lakes Pass. Survivors can progress to phase 2 at the Canyon Inn for refreshments, and tales of the big head plant on the way down. Join Tom at the Hillside Plaza Shopping Center (7000S 2300E) at 9:00 AM. Backcountry skis and boots (not track skis) are strongly suggested.

LEADER'S CHOICE SKI TOUR (MSD) Register with George Westbrook (942-6071) by the night before the trip. There is usually an early start.

Feb 3
Mon

VOLLEYBALL--6:30PM at the Highland High School (2166 South 1700 East). follow the signs near the gynosiums. The cost is \$1.00. For info. call Doug, 269-1833.

Feb 5
Wed

LAP SWIMMING FOR CYCLISTS, SKIERS, and any others interested in conditioning. We will meet at 7PM at Steiner Aquatic Center, 645 So. Guardsman Way. The cost is \$2.50, unless 10 or more people show up, in which case the cost is \$2.00. Afterwards, we will go somewhere for coffee or a light dinner. This will be an every Wednesday occurrence until spring. The place might alternate between Steiner, U of U, Deseret Gym, etc., so if you did not go the week before call either Annamarie Ferrari, 466-1972, or Lade Heaton, 466-7008 for details as to place.

Feb 8
Sat

SECOND ANNUAL SOLDIER FORK SKI TOUR (MOD) This popular tour will again be led by Kyle Williams (298-2184). This is a canyon to canyon shuttle tour. Call Kyle to arrange the shuttle. Pieps, shovels and skins required. Meet at the Hillside Plaza Shopping Center (7000 South 2300 East) at 9:00 AM.

EMPIRE CANYON AT PARK CITY SKI TOUR (MOD) Ski at Park City at the best possible price, \$0. Join Leslie Woods(484-2338) for this tour just outside of the Park City ski area boundary. Meet at the Regency Theater/KMart on Parleys Way at 9:00 AM or Park City Junction McDonalds at 10:00 AM.

BEAR TRAP SKI TOUR (MOD+) Join Rick McClain (W 487-2112) for this upper end MOD overlooking Desolation Lake. Meet at the Hillside Plaza Shopping Center (7000S 2300E) at 9:00 AM. Pieps and shovels required and skins recommended.

TELEMARK CLINIC (MOD) Plans are to ski at Alta in the Albion area. We will buy a lift ticket on the Albion lift and break up into groups by ability. Meet at the Hillside Plaza Shopping Center (7000S 2300E) at 9:00 AM. Instructors are needed.

LEADER'S CHOICE SKI TOUR (MSD) Register with George Westbrook (942-6071) by the night before the trip. There is usually an early start.

Feb 8
Sat

THE WIND RIVER BAND - a pop entertainment band will play at the First Unitarian Church - 569 South 1300 East. Potluck dinner at 6:30pm, dancing at 8:00pm till about 11:30pm. Music is variety party mix of oldies, popular, and if you like, bring your requests for the band to play. Cost is \$5.00.

Feb 9
Sun

DESOLATION LAKE SKI TOUR (NTD) Join Jim Yehle (486-9729) on this longer tour to Desolation Lake. Meet at the Hillside Plaza Shopping Center (7000S 2300E) at 9:00 AM. Skins recommended. Backcountry skis and boots (not track skis) are strongly suggested.

CATHERINES PASS SKI TOUR (MOD) Clint Lewis will find good skiing on the moderate slopes above Catherine's Pass from the Albion Basin side and on to Supreme. Join Clint (H 295-8645 W 322-8318) at the Hillside Plaza Shopping Center (7000S 2300E) at 9:00 AM. Pieps and shovels required and skins recommended. Also \$2.00 and safety straps for riding up the lift.

LEADER'S CHOICE SKI TOUR (MSD) Register with Rolf Dobbling (467-6636) by the night before the trip. There is usually an early start.

RED PINE SKI TOUR (MOD) Join Monty Young (255-8392) on a tour to this popular summer spot. Trip leaves from the Hillside Plaza Shopping Center (7000S 2300E) at 9:00 AM. Pieps and shovels required and skins recommended.

LEADERS CHOICE SNOWSHOE TOUR (NTD) A new leader, Thomas Munn (533-0819), plans an enjoyable day in winter with time to enjoy and observe nature. Snowshoers can join Thomas at the Hillside Plaza Shopping Center (7000 S. 2300 E.) at 9:00 AM.

UPPER GREENS BASIN SKI TOUR (MOD) Clint Lewis (H 295-8645 Sun W 322-8318) will lead this tour to open skiing at the top with powder in the trees lower down on the north facing slope. Meet Clint at 9:00 AM at the Hillside Plaza Shopping Center (7000 South 2300 East).

THE THIRD ANNUAL AS-CLOSE-AS-WE-COULD-GET-TO-VALENTINE'S-DAY-SOCIAL (WITHOUT HITTING THE HOLIDAY WEEKEND) - Join Leslie Mullins and Laurlee Leavitt once again for a feast of soups, stews, salads and marvelous desserts, all for just \$4.00. Bring your own cup, beverage, and appetite at 5PM to Leslie's house, 829 East 900 South, and, as in year's past, we'll have a kiss for you. If anyone has card tables and chairs they can donate for the evening, Leslie would appreciate a call at 363-0560.

Feb 8-9
Sat-Sun

RED CANYON BOATING TRIP (CLASS II). Sat-Sun. Tim Poole (547-9400) will lead a winter boating trip on the first weekend with a good forecast, beginning with this weekend. The trip will go to Red Canyon on the Green River (Class II). See additional details in the Janaury issue's Boating Director's column.

Feb 10
Mon

VOLLEYBALL--6:30PM at the Highland High School (2166 South 1700 East). follow the signs near the gynasiums. The cost is \$1.00. For info. call Doug, 269-1833.

Feb 15
Sat

WHITE PINE LAKE SKI TOUR (MOD-) Join Anna Cordes (467-9430) for this popular tour, part way to the lake. There should be some excellent open areas for some powder turns. Meet at the Hillside Plaza Shopping Center (7000S 2300E) at 9:00 AM. Pieps, shovels and skins recommended. Backcountry skis and boots (not track skis) are strongly suggested.

MILL D TO LITTLE WATER SKI TOUR (MOD) Myron Herrick (561-0472) will lead the group to the top of Little Water Peak. Meet at the Hillside Plaza Shopping Center (7000S 2300E) at 9:00 AM. Pieps and shovels required and skins recommended.

LEADER'S CHOICE SKI TOUR (MSD) Register with George Westbrook (942-6071) by the night before the trip. There is usually an early start.

MILL D TO BEARTRAP LOOP SNOWSHOE TOUR (MOD) Norm Pobanz (266-3703) wants to do a loop trip past Desolation Lake. This more difficult snowshoe tour will meet at the Hillside Plaza Shopping Center (7000 S. 2300 E. at 9:00 AM.

OPEN LODGE-WINTER WORK PARTY WITH A MUSIC WINTER SOCIAL. 10AM - ? Drop on by, before, after, or even during your skiing fun. Bring a snack to share, bring a musical instrument if you want to jam. For more information, call Debora at 1-649-2754.

Feb. 16
Sun.

DAYS FORK/LEADERS CHOICE (MOD) Join Karen Perkins (272-2225) at the Hillside Plaza Shopping Center (7000 S. 2300 E. at 9:00 AM. Pieps and shovels required.

TIMPANOGAS SKI TOUR (MSD+) Enjoy one of the most beautiful peaks in the Wasatch. You will need to be a strong skier with stamina. Call George Westbrook (942-6071).

GREENS BASIN SNOWSHOE TOUR (NTD) Visit this beautiful hidden meadow on snowshoes. Gerry Powelson (1-756-3004) will leave the Hillside Plaza Shopping Center (7000 South 2300 East) at 9:00 AM for this slow paced snowshoe trip.

BROADS FORK SKI TOUR (MOD) Larry Larkin (486-9060) will lead this tour to the basin, with long north-facing slopes on the return. Pieps and shovels required and skins recommended or good wax. Meet Larry at the Hillside Plaza Shopping Center (7000S 2300E) at 9:30 AM.

WOLVERINE BOWL SKI TOUR (MOD) The tour will start at the Brighton Millicent Lift to gain faster access to (hopefully) superb skiing in the bowl. Meet Jim Piani (272-3921) at the Hillside Plaza Shopping Center (7000S 2300E) at 9:00 AM. Pieps ,shovels and skins required.

Feb 19
Wed

GENERAL MEMBERSHIP MEETING AND ELECTIONS. Zions Lutheran Church, 1070 South Foothill, 7PM.

Feb 22
Sat

DESOLATION LAKE SKI TOUR (NTD). Mike Hendrickson (942-1476) will lead this long but fairly easy tour to Desolation Lake. Pieps, and shovels optional and skins suggested. Meet at the Hillside Plaza Shopping Center (7000 South 2300 East) at 9:00 AM. Backcountry skis and boots (not track skis) are strongly suggested.

TEACH AND TOUR SKI TOUR (EL or NTD-). This will probably be the last beginners class this season to help new skiers with basic skills. The tour will be on a gentle grade and will require the ability to walk on the skis. Join Norm Fish (964-6155) and Dauphne Randall at the Hillside Plaza Shopping Center (7000 South 2300 East) at 9:30 AM. Backcountry skis and boots (not track skis) are strongly suggested.

POWDER PARK SKI TOUR (MOD) Cassie Badowski (278-5153) will lead this popular tour. Meet at the Hillside Plaza Shopping Center (7000 South 2300 East) at 9:00 AM. Pieps and shovels required and skins recommended.

MT. RAYMOND SKI TOUR (MOD+) Join the Caldwells (942-6065) on one of their more favorite tours, Mt. Raymond via Butler Fork. Pieps and shovels required and skins recommended. Meet at their house (3645) Golden Hills Ave. at 8:30 AM.

GOBBLERS KNOB SKI TOUR (MSD). Call Chris Atkin to register (582-7902) and for meeting time and place.

BROADS FORK SNOWSHOE TOUR (MOD) Join Floyd Durrant (596-1931) on this difficult snowshoe tour to a beautiful bowl. Meet Floyd at the Hillside Plaza Shopping Center (7000 South 2300 East) at 9:00 AM.

Feb 23
Sun

DOG LAKE SKI TOUR (NTD). Trudy Healy (943-2290), one of our most likable ski tour leaders, will lead this easy tour. Join Trudy at the Hillside Plaza Shopping Center (7000 South 2300 East) at 9:30 AM. Backcountry skis and boots (not track skis) are strongly suggested and skins recommended.

WHITE PINE SKI TOUR (MOD+). Ski to White Pine in search of powder. Join Brian Barkey (583-1205) on this popular tour to the powder bowls that Snowbird wanted for downhill skiers. Meet at the Hillside Plaza Shopping Center (7000 South 2300 East) at 8:30 AM. Pieps and shovels required and skins required.

DAYS FORK SKI TOUR (MOD) Join Val Naef (255-7562) on this tour, both for excellent skiing and to learn a better way down the lower slope than skiing down the trail. Meet Val at the Hillside Plaza Shopping Center (7000 South 2300 East) at 9:00 AM. Pieps and shovels required and skins recommended.

LEADERS CHOICE SKI TOUR (MSD) Call Jeff Barrell (278-3510) to register and for meeting time and place.

TRIPPLE TRAVERSE SKI TOUR (MSD) ALTA - FLAGSTAFF PK - DAYS FORK - DESOLATION - LITTLE WATER PK - MILLCREEK - MURDOCK PK - LAMBS CANYON - TOLL CANYON - OUT SUMMIT PARK. You will be climbing S to SW slopes for easy climbing and skiing N to NE for great skiing. This trip will go at a reasonable pace but a very early start. Call George Westbrook (942-6071).

PINEBROOK SNOWSHOE TOUR (NTD+). Exploratory snowshoe trip up Parley's Canyon. Join Christine Allred (261-8183) at the Regency Theater/KMart parking lot on Parley's Way at 9:30 AM.

Feb 24
Mon

VOLLEYBALL--6:30PM at the Highland High School (2166 South 1700 East). follow the signs near the gymnasiums. The cost is \$1.00. For info. call Doug, 269-1833.

Feb 29
Sat

SILVER FORK SKI TOUR (EL). Janet Chatwin (255-3732) will lead this tour to the practice hill used on past tours. Expect a gentle climb to the East facing practice hill. Join Janet at the Hillside Plaza Shopping Center (7000 South 2300 East) at 9:30 AM. Backcountry skis and boots (not track skis) are strongly suggested. Other NTD skiers are encouraged to come on this tour and help Janet with the beginners.

MAYBIRD GULCH SKI TOUR (MOD+) Join Peter Hansen on this expert (but not all day) tour. Great open skiing ending in a steep slope with trees. Meet at the Hillside Plaza Shopping Center (7000 South 2300 East) at 9:00 AM. Pieps and shovels required and skins required.

LEADERS CHOICE SKI TOUR (MOD) Join Charles and Emily Hall (277-1555) on a surprise tour to somewhere. Meet at the Hillside Plaza Shopping Center (7000 South 2300 East) at 9:00 AM. Pieps and shovels required and skins recommended.

Feb 29
Sat

COMBINATION SKI AND SNOWSHOE TOUR (NTD). Cross-country on a flat easy course and then snowshoe up the Middle Fork of the Ogden River. You can use track skis and boots on this tour above Huntsville. Meet Ken Workman (1-825-3448) at 9:45 at the Rainbow Gardens Cafe at the mouth of Ogden Canyon. Call Doug Stark (277-8538) for carpool info from the Salt Lake area.

Feb

SCUBA PARTIES. Call Bob Sherer, 967-0218, for details.

Jan-Feb

MT. WHITNEY. Call George Westbook for details (942-6071).

Mar 1
Sun

BEAVER CREEK SKI TOUR (NTD) Sam (age 8) and Penny Smith (age ?) (278-6515) will lead an easy adult and kids tour in the Uintas. Ski at your own pace. Children must bring their own adult. Call Penny for information on the kids tour and for pre-registration.

WOLVERINE BOWL via MT. MILLICENT SKI TOUR (MOD) Join George Swanson (466-3003) on this classic tour via MT. Millicent. Meet at the Hillside Plaza Shopping Center (7000 South 2300 East) at 9:00 AM. Pieps and shovels required and skins recommended.

DESOLATION LAKE SKI TOUR (MOD) Garry Burg (485-4911) will return from the lake via a south traverse to reach NW facing open slopes, making this tour a MOD rating. Meet Garry at the Hillside Plaza Shopping Center (7000 South 2300 East) at 9:00 AM. Pieps and shovels required and skins recommended.

MT. NEBO SKI TOUR (MSD) This trip involves 7000+ vertical feet and will be approached from the west. Call George Westbrook (942-6071). There will be a stay in Mona the night before to avoid a long car ride.

LEADERS CHOICE SKI TOUR (MSD) Call Dave Smith (278-6515) to resister.

March 2
Mon

VOLLEYBALL--6:30PM at the Highland High School (2166 South 1700 East). follow the signs near the gynasiums. The cost is \$1.00. For info. call Doug, 269-1833.

March 5-9
Thur-Mon

SKI TRIP TO YELLOWSTONE. Drive from SLC March 5th. March 6-8 at the Snow Lodge cabins. Return to SLC the evening of March 9th. \$115 pp includes round-trip snow coach and 3 nights lodging at the cabin. \$50 deposit due to confirm your reservation. Maximum 12 participants. Currently there is one (1) space left on this trip, so call ASAP. Call Cassie Badowsky, 278-5153 evenings or 292-8687 during the day for more information and to register.

March 7
Sat

SCOTTS PASS SKI TOUR (NTD+) Richard Conn (363-6035) will lead this WMC favorite. Meet Richard at the Hillside Plaza Shopping Center (7000 South 2300 East) at 9:30 AM. Pieps and shovels required and skins recommended. Backcountry skis and boots (not track skis) are strongly suggested.

POWDER PARK SKI TOUR (MOD) Join Martin Gregory (582-2403) to find excellent skiing on this popular tour. If the group is willing several runs will be made. Meet at the Hillside Plaza Shopping Center (7000 South 2300 East) at 9:00 AM. Pieps and shovels required and skins recommended.

BRIGHTON TO SILVER FORK SKI TOUR (MOD+) Does 2460 ft descent with only 1460 ft ascent sound good? Join Larry Eggar (944-0213) on this trip which should provide excellent skiing down Silverfork to the lower Solitude parking lot. Meet at the Hillside Plaza Shopping Center (7000 South 2300 East) at 9:00 AM. Pieps and shovels required and skins recommended.

LEADERS CHOICE SKI TOUR (MSD) Call Rolf Doebling (467-6636) to register by the night before the trip.

OPHIR SNOWSHOE TOUR (NTD) Explore a new area on the west side of the Oquirrh mountains on snowshoes with Tiger Funk (964-8758). Join Tiger at the parking lot on the northeast corner of 3300 South and State at 9:00 AM.

March 8
Sun

SPRUCES WALK SKI TOUR (EL). This tour will be for beginners to Sun introduce them to Xcountry skiing. There will be little if any hill climbing. Backcountry skis and boots (not track skis) are strongly suggested. Meet Christine Allred, 261-8183, at the Hillside Plaza Shopping Center (7000 South 2300 East) at 9:30 AM. Other NTD skiers are encouraged to come on this tour to help Christine with the beginners.

BEAR TRAP FORK SKI TOUR (MOD) Frank Davis (272-7217) will lead this tour. Meet Frank at the Hillside Plaza Shopping Center (7000 South 2300 East) at 9:00 AM.

LEADERS CHOICE SKI TOUR (MOD) Leslie Woods (484-2338), an excellent telemark instructor, will pick the ideal tour for the current snow conditions. Join Leslie at the Hillside Plaza Shopping Center (7000 South 2300 East) at 9:00 AM. Pieps and shovels required and skins recommended.

March 14
Sat

DESOLATION LAKE VIA MILL D SKI TOUR (NTD+) Join Jim Byrne (582-5631). for this beautiful spring tour. Meet at the Hillside Plaza Shopping Center (7000 South 2300 East) at 9:30 AM. Backcountry skis and boots (not track skis) are strongly suggested and skins are also suggested.

BRIGHTON to MIDWAY SKI TOUR (MOD). Ken Kelley (1-649-3520) and Mike Budig (328-4512) will lead this annual event to the other side. Register by Wed 3-11 for carpooling (cars needed). Meet at the Hillside Plaza Shopping Center (7000 South 2300 East) to bus to Brighton. Pieps and shovels required and skins required. After the tour, go to a hot springs to soak (dressing vans provided) Dinner will follow after soak.

UPPER GREENS BASIN VIA DAYS FORK SKI TOUR (MOD) Chris Biltorf (359-5645) will lead this classic by way of Days Fork. Expect open slopes on the top, excellent powder in the trees lower down. Join Chris at the Hillside Plaza Shopping Center (7000 South 2300 East) at 9:00 AM. Pieps and shovels required and skins required.

LEADERS CHOICE SKI TOUR (MSD) Call Terry Rollins (467-5088) to register by Friday evening. Possible tours include Alta to Cardiff or Maybird.

March 15
Sun

LEADERS CHOICE SKI TOUR (NTD+) Jay Jones (363-3696) the WMC member best known as a yoga teacher, promises an excellent tour with the destination based on the spring snow conditions. Join Jay at the Hillside Plaza Shopping Center (7000 South 2300 East) at 9:30 AM.

LEADERS CHOICE SKI TOUR (MOD) William McCarvill (943-5520) will pick the tour best suited for the current spring snow conditions. Possible choices would be Red Pine, White Pine, or group censuses. Meet Bill at the Hillside Plaza Shopping Center (7000 South 2300 East) at 9:00 AM. Pieps and shovels required and skins recommended.

POWDER PARK SKI TOUR (MOD) Tom Silberstorf (255-2784) will lead this popular tour which should give great spring skiing. Join the group at the Hillside Plaza Shopping Center (7000 South 2300 East) at 9:00 AM. Pieps and shovels required and skins recommended. Backcountry skis and boots (not track skis) are strongly suggested.

FUTURE EVENTS AT A GLANCE

MARCH--Open water certification classes begin March 11th and 13th. Call Bob Sherer, 967-0218, for details.

MAY. FAIRY MEADOWS, BRITISH COLUMBIA. Guided tour over glacier. Stay in huts. Estimated cost \$650. Call George Westbrook (942-6071 H or 882-6129 W).

JULY 4th WEEKEND. HIKING TRIP TO MT. ELBERT (14,431') COLORADO OR HIGHEST PEAKS IN COLORADO, NEW MEXICO, ARIZONA - July 4th Weekend Mt. Whitney was so much fun last summer that we decided to keep doing a good thing! Frand Atwood and Cassie Badowsky are planning a hiking trip to climb either the highest peak in Colorado, Mt. Elber, and a couple other 14-ers; or make a grand circle and do the high points in Colorao, New Mexico (Wheeler Peak 13,160') and Arizona (Humphrey's Peak 12,670'). Contact Cassie Badowsky, 278-5153, for more information..

LEWARD ISLANDS CARIBBEAN SAILING PLANNED, JULY 18-AUGUST 1, contact Vince Desimone for details, 1-649-6805 (see arttele on page 21).

OCTOBER HIKE ACROSS THE GRAND CANYON. October 15-18, 1992. Reservations for the South RIM must be made in February. Call Carol Nelson, 268-6405, for details.

FROM THE PRESIDENT:

By Wick R. Miller

1991 WMC Service Awards

We tripped the light fantastic at the nominations banquet in the Organ Loft last month. In addition to ratifying the nominations for the governing board, this was also the opportunity to honor those whose outstanding volunteerism contributes to the success of the club.

The **Pa Perry** award went to Mel Davis for his work in promoting Wasatch Trails. The **Conservation Award** went to Steve Lewis who contributed his legal expertise and many many hours in the fight for a Helifree Wasatch.

Coffee mugs with the WMC emblem and personal names went to:

Allan Gavere: for yeoman work in the boating program, and for getting hundreds of heliski questionnaires in the hands of backcountry skiers and snowshoers.

Vince Desimone: for his contribution to the international sailing program, and particularly for his many hours spent working on the sewer and water issue at the WMC lodge.

Bob Scherer: for his leadership in the scuba diving program.

Rose Novak: for work over the years in making

sure the Rambler is mailed to us on time.

Norm Pobanz: for his involvement over the years in the snowshoe program.

Will McCarvill: for work in the backpack program, and in state conservation issues.

Donn Seeley and Howard Wilkerson: for their contribution to the backpacking program.

Annette Tanner: for her work with the membership director.

Frank Atwood, Carol Beasley, Carol Dinan, and Rob Snow: for their contribution to entertainment.

FROM THE NOMINATIONS COMMITTEE:

The Nominations committee presents the following candidates for 1992-1993 Directors:

President

Wick Miller *

Secretary

Betty Cluff

Treasurer

Gloria O'Conner

Membership

Linda Kosky
Monte Young (co-directors)

Boating

Randy Klein *

Conservation

John Veranth *
Mark Huchinson *
(co-directors)

Entertainment

Frank Atwood
Carol Beasley (co-directors)

Hiking

Mike Treshow *
Don Seely (co-directors)

Lodge

Vince Desimone *
Scott Harrison (rentals)

Managing Editors/Publications

Christine Allred
Chris Baierschmidt
Jean Frances
(tri-directors)

Mountaineering

Steve Walker

Ski Touring

Norm Fish *
Clint Lewis
(co-directors)

Information

Barbara Jacobson *
Leslie Woods
(co-directors)

Trustee

Emily Hall *OR*
Mike Budig

(* means incumbent). The Trustee position has two candidates for the one position. The other nominees are running uncontested mostly as co-directors. The Nominations Committee, Jeff Barrell/Jerry Hatch /Janet Friend, thanks those listed above for volunteering and hope they have a great and productive year.

**FROM THE
MANAGING EDITORS:**

The Managing Editors, Magdaline (now off to the wilds of Washington state) and Leslie (gracefully retiring to more hiking and skiing), would like to thank all of the Directors, Coordinators, Hike Leaders, and Submitters of Articles (and anyone else not otherwise mentioned), for your help and cooperation during our tenure. We couldn't have put together *The Rambler* without all of you.

We would also like to wish lots of luck to the new triarchy of Managing Editors: Christine Allred, Chris Baierschmidt, and Jean Frances.

Keep on submitting and remember, disk (computer) is better than paper.

**PHOTOS
WANTED!**

**FOR NEXT
MONTH'S
RAMBLER**

(see Submitting Articles To The Rambler on page 2)

SAILING COORDINATOR:

**LEWARD ISLANDS CARIBBEAN
SAILING PLANNED, JULY 18-AUGUST 1**

by Vince Desimone

Join an advenurous group of WMC members sailing and exploring the Leward Islands of Guadeloupe, Dominica, and Martinique. Guadeloupe is a delightful combination of French, African and East Indian cultures which blend harmoniously on a lush island of dense forests, mountains and a 320' high waterfall. Dominica is a large island undiscovered by tourists where lush forests abound with brightly colored tropical flowers and birds. Martinique is very French in culture, cuisine and fashionable boutiques. Beautiful beaches and excellent snorkeling and diving abound at each of the islands.

It is not necessary to be a sailor to participate. You will be expected to be willing to assist and share in the chores on-board. Many have asked if we spend all of our time sailing. We average 5 hours under sail. Once at anchor, substantial time is spent on shore hiking, exploring, sight-seeing, shopping, beaching, snorkeling, diving or at other activities chosen. We typically eat out at restaurants about half of the evenings.

The WMC sailing program has been very popular and trips fill-up rapidly. We have had 2 boats in Belize, 4 in the Virgin Islands, 2 in the Windward Islands, and 2 in Greece. Deposits for the boats must be sent in 6 months in advance. It is difficult to add boats on short notice. In order to avoid disappointment you must register early. A deposit of \$25 is required to hold your place. The deposit is refundable until February 15th. After that time it is not. Cost of the trip including airfare, boats and operating costs is estimated to be \$1300 for a week's trip and \$1900 for a two-week trip. It is possible to start in one location and fly out part way through the two-week trip to join the trip enroute.

If you are interested contact Vince at 1-649-6805.

FROM THE SCUBA COORDINATOR:

By Bob Sherer

The response to the scuba party was more than expected. The problem was getting enough people together on the same night. Watch the event section for more Scuba parties. Call me first before showing up at Neptune.

Beginning in March, I would like to coordinate two 6 week courses for those interested in Scuba certification. One class will begin on Wednesday, March 11th and one on Friday, March 13th, so plan ahead. If enough of you call, I can get a discount. I hope that the dates are flexible.

D.A.N. (Diver Alert Network) membership and insurance is now a requirement for WMC diving events. It costs \$40.00 per year. Call 1-800-446-2671.

Are there any future sailboat captains out there? If that's a YES, call me. The Moorings is a world-wide sailboat charter service. The owners, Steve and Doloris Colgate, also operate a sailing school in Florida. Their "Learn to Sail" course is now touring the country, which will save you airfare and lodging. The dates aren't set yet but the course will run from Wednesday evening through Monday. You'll learn on a 27 foot Olympic sailing class sailboat. The cost is \$600.00.

Sue Chalmers is a WMC member living in Fort Lauderdale. She is also a member of a Sierra Club with 600 members. Many of them would like to come here and ski and of course, we would like to go there and dive. We're working on a lodging exchange idea to cut the cost for all of us.

Vince is hard at work on our next sailing expedition to the Leeward Islands. The itinerary includes sailing out of Guadeloupe to Dominica and Martinique (see the previous article). I'm fantasizing about a compressor on-board a 40 foot catamaran.

Future Events: MARCH--OPEN WATER CERTIFICATION classes begin March 11th and 13th.

FROM THE SKI TOUR DIRECTOR:

AVALANCHE CLASS

The annual avalanche class was held on Jan. 11 at the Zion Lutheran Church. The morning session taught by Dusty Sackett of the Snowbird Safety Dept. was very well done to the degree that participants wanted to stay for an afternoon session. We hope to have Snowbird teach the class next year covering approximately the same material.

The afternoon Pieps practice instructors were Leslie Woods, Milt Hollander, Terry Rollins, and Jeff Barrell. Thanks also to George Westbrook who arranged the morning session classes.

The gross proceeds were \$124 with expenses for food at approximately \$30 with some of the food used at the Audrey Kelley.

AUDREY KELLY CLINIC

The now annual Audrey Kelley Clinic was held on Jan. 12 at the WMC lodge. We had approximately 40 beginning skiers with about 15 support people and friends of Audrey. Next year we hope to have more advertising to attract a larger group. The lodge location served well for instruction terrain, however the afternoon video session will be relocated to a more remote slope. Leftover food was donated to the Salvation Army Kitchen. Thanks again to all who came and especially to all who helped with the food and were instructors.

THE HELISKI DEBATE CONTINUES

By Wick R. Miller

Many of you have gotten an update on the debate from Steve Lewis. For those of you that have not, here is a synopsis. It appears that Susan Giannettino, Forest Supervisor of Wasatch-Cache National Forest, will be redoing the process for the heliski permit, with the public debate, with a new EA or EIS, and the whole bit. The Ogden Regional Forest Service Office also announced that they issued a "Stay Request" for the Wasatch Powerbird Guides, which means that WPG is flying under the old rules (which aren't really that much different from the new rules). So this explains the usual "whop, whop, whop" that you have been hearing in the Central Wasatch the past several weeks.

The Wasatch Mountain Club and Save Our Canyons have linked arms to do battle. If no satisfactory compromise can be found (and it is unlikely that one can be found), we will probably end up in court.

What can you do to help? Call the WPG "hot line" to find out where they are going to ski. Call regularly. As of this writing, it is a long distance number (742-2812), but by the time you read this it may be a local number. Wear your "Helifree Wasatch" caps; if you still don't have one, we can provide you with one for a donation of \$7.50 (donations will help fund the legal battle that is probably down the road). Contact the Forest Service and express your displeasure at the turn of events: Wasatch-Cache District Office, 6944 South 300 East, Salt Lake City, Utah, 84121; ph 524-5042. Contact Mike Sieg, District Ranger, or Doug Abromeit, Winter Recreation. Would do no harm to send letters to the Editor of the local papers, letters to Susan Giannettino of the Salt Lake office, or Gray Reynold, Regional Forester (U.S. Forest Service, Intermountain Region, 324 25th Street, Ogden, Utah 84401).

If you wish to know more, or wish to help, call me (1-649-1790, H), Gail Dick of Save Our Canyons (359-5764, H), or Steve Lewis, Heliski Bounty Hunter (533-3200, W).

NEWS RELEASE:

CITIZEN FORESTERS PROVIDE TREE CARE

Do you have an interest in helping maintain Salt Lake's urban forest? Would you like to learn how to use a giant pole saw? Learn about the importance of a tree's Branch Bark Ridge? The newly established Citizen Forestry Program will enable you to learn these things and more! After completing a five hour training course, this volunteer program will allow you to participate in regularly scheduled low maintenance street tree care projects in Salt Lake. For training information call the Urban Forestry Office at 972-7818.

EAST AFRICAN SAFARI 1992

WMC member Dr. Barry Quinn and his colleague, Dr. Robert Warnock will be leading Westminster College's 7th East African safari to Kenya and Tanzania from June 15 to July 1, 1992. The tour will include the best game parks in both countries including the desert country of Samburu, Lake Nakuru and its thousands of birds, the savannah of Maasai Mara. In Tanzania, visits will be made to Ngorongoro Crater (guaranteed rhinos), Olduvai Gorge, site of early man, the Serengeti Plains, in time for the great wildebeest migration, and Lake Manyara.

Cost of the trip will be \$4,375 and includes all air and land transport from Salt Lake City, most meals, and first class hotels (sorry, no tents). Air transport will be on KLM Airlines thru Amsterdam. Of interest to WMC members is an optional climb of 19,340 foot Mt. Kilimanjaro, the highest mountain in Africa. The climb would cost \$400 more and would be in lieu of the Tanzanian game parks. The non-technical climb includes guides and porters who carry everything except the climber and they also prepare all meals. For information and a brochure, call or write: Barry Quinn, Dept. of Biology, Westminster College, Salt Lake City 84105. 488-4191 or home, 272-7097.

U. S. BEACON FREQUENCY CHANGE NOW OFFICIAL

by Walt Haas

The Ad Hoc Committee on Avalanche Rescue Transceiver Frequencies of the American Association of Avalanche Professionals has finally voted to officially change to the higher, so-called "European" frequency of 457 kHz. The committee has recommended that the old "American" frequency of 2275 Hz be completely phased out by December 1, 1995.

The United States is now the only country in the world still using the 2275 Hz frequency. Converting to the world standard frequency will make it possible for you to use the same rescue transceiver anywhere in the world.

For the next four years, the committee recommends the purchase of dual frequency transceivers which will simultaneously transmit and receive both frequencies. After that time only 457 kHz transceivers are to be sold, which will be incompatible with the existing 2275 Hz transceivers. If you own a transceiver which works at 2275 Hz only, you should plan to replace it by December 1, 1995.

Although this recommendation does not have the force of law, it comes with the support of the avalanche community. This support is based on studies which have shown that efficient rescue of avalanche victims requires that all transceivers operate on compatible frequencies, and that the 457 kHz frequency is the most effective.

FEBRUARY SKY CALENDAR

by Ben Everitt

MOON

Last Quarter	Feb 3	Mar 4
New Moon	Feb 11	Mar 11
First Quarter	Feb 18	Mar 18
Full Moon	Feb 25	Mar 25

MOONRISE

Saturday	Est. Local Time
Feb 1	6:00 AM
Feb 8	9:30 AM
Feb 15	3:00 PM
Feb 22	11:30 PM
Feb 29	5:00 AM
Mar 7	8:00 AM
Mar 14	2:00 PM
Mar 21	10:30 PM
Mar 28	3:30 AM
Apr 4	6:30 AM

NOTE: Moonrise times are for 40 degrees north latitude, 112 west longitude. Add about an hour for each day later than the given date, and another hour if you are in the mountains.

SOURCE: The Astronomical Almanac for 1992

PLANETS: Most of the planets are back in the dawn sky, Venus, Mars, and Saturn, listed in order from top down, at the beginning of the month will change places as they wander their separate paths. Brilliant Venus, going east, will pass just north of reddish Mars on February 19th and just north of pale Saturn on February 28th. Mars is closing with Saturn and will be just north of it on March 6th.

TRIP TALK

DRY HOLLOW TO MULE HOLLOW

Saturday, November 16, 1991

by Jerry Hatch

On this day I had the privilege of leading the last hike of the year. When I arrived at 9:00AM, there were eight folks with hiking gear and skis waiting for me -- the hike was actually under the auspices of the skiing committee and it was at the leader's discretion as to whether it was to be a hike or a ski tour, and I did not bring skis. When I asked the group where they would like to go, Monty Young came up with the winning suggestion: "How about going up Dry Hollow and down Mule Hollow?" We all readily agreed, except for Trudy Healy, who had her heart set on skiing.

The day was beautiful in a very late autumn sort of way, the hills covered with a faint blanket of snow, and the sky pale in the light of a weak and southern sun. On the way up I was enraptured by the cliffs above Dry Hollow: they were just sufficiently dusted with snow so that every crack and fracture was noticeable. Luckily the snow never got to be so deep as to create any difficulty hiking. At one point Cassie Badowsky said, "Look at the Oquirrns, they look just like the Himalayas!" "Sure", I thought to myself, then I turned around and looked at them. Standing white and serene above a base of puffy ground fog, they were indeed majestic, as magnificent as I've ever seen them anyway.

The group was a lot of fun, as personable a bunch of folks as I've ever hiked with. When we got to the first ridge, Brian Barkey began to tell us about his work with nuclear reactors in Washington State. Someone else remembered that he had spent several years in the engine room of the Enterprise, and this brought forth a couple of witticisms about his melting down or glowing in the dark. Several of us took a few steps away from him, but Brian just stood there with his best "Mr. Personality" grin.

The day was quiet save for the occasional sounds of rifle fire from the gun club. At one rest stop we heard something which sounded far more like dynamite than a gun. I commented that it must be howitzer day at the club, which brought forth a few guffaws from my fellow hikers. It also produced a lively discussion on the nature of humor. "I mean do you suppose that that was really funny, or that

we just find it funny because of oxygen deprivation brought on by the altitude?", someone, I believe it was Brian, asked.

When we got to the saddle, poor Monty and Norm Pobanz were almost turning blue from waiting for us in the cold, "It was sunny when we got here", one of them commented. (There is some irony in this for those of you who know Monty or Norm).

So it was a bit chilly for lunch. Luckily not one, but two of our fellow hikers had brought along thermos bottles of tea, which they graciously shared with all of us. Lunchtime entertainment consisted of ridiculing Tom Walsh's lunch. (Do not let your old granola bars fall afoul of Hank Winawer's deadly wit).

Heading down into Mule Hollow, we soon got into a great deal more snow than we had stomped through on the way up. The brilliant Cassie simply sat down in it, and slid down through the trees, laughing as she went, (there are few sounds in this world as wonderfully upbeat as that glorious laughter). The rest of the group immediately followed her cue, with the exception of myself, (who had on Levis), and Norm and Monty, who were probably halfway to Uinta County by then.

As we continued on, the day took on a hazy brilliance, with the sunlight luminous above the thin blanket of fog which stretched from canyon wall to canyon wall. Mule Hollow was as pretty as I'd ever seen it, with the normally dry stream gurgling across the cobbles, and snow clinging thickly to the branches of the trees. One of the trees had the snow rudely shaken out of it when the group passed underneath it: "Knock it off Tom!", we all shouted. That infectious Peck's bad boy grin in the midst of that thick salt and pepper beard is another one of the memories I shall long cherish from my hiking days.

DRY HOLLOW TO MULE HOLLOW

(continued)

After a brief stop at the mine dump, ("...are you sure you wouldn't like to carry down one of these large metal artifacts, Tom?"), we pushed on down to the bottom. Hank was delayed by a minor muscle cramp, which I was sorry about except that it gave me a chance to talk to him: it's funny how you can hike all summer and sometimes only get a chance to talk to your old friends once or twice.

As we were waiting at the bottom, Tom once again broke open his lunch and got out some cookies. These cookies weren't just any old cookies, these cookies were downright odd...they looked like, well...by the common consensus of the group, these cookies looked like, well...you know. This fact did not keep one of our number from having designs on them. No sooner had Tom set them down on his lunch sack, Susan Sweigert snatched one up and began to munch away on it. "I don't care what it looks like, - the significant thing is that it's chocolate!"

PFEIFFERHORN SKI ASCENT

Sunday, December 19, 1991

by Jim Yehle

As a newcomer to Utah and the Wasatch Mountain Club, I had no ideawhat difficulty level my skiing abilities fit. I had gone on a couple of MOD tours, and found myself relatively unchallenged. So why not try an MSD? I joined up with a group of four others willing to brave a foggy 6:00AM start. I haven't done much ski mountaineering, and must admit I was a bit daunted by the sight of several sets of mountaineering boots and skis. We reached the White Pine parking lot and were under way at 7:00 by the light of a mist-shrouded crescent moon. White Pine trailhead always seems cold, but the climb soon warmed me. Snow that had fallen the previous night and that morning grew deeper as we ascended Red Pine drainage, and it looked as if the return trip would be extraordinary. The dry spell had been broken!

Skis came off a hundred feet or so below the top of the ridge separating Red Pine Fork and Maybird Gulch. Once on the ridge, the clouds and wind did their best to discourage us, but everyone had brought sensible clothing. The traverse of the ridge at the head of Maybird Gulch and onto Pfeifferhorn's east ridge was straightforward. Most of the party abandoned ski poles for ice axes as we took turns kicking steps up a steep snowfield just south of the east ridge, then regained the ridge below the summit. Once on top, we took the time only to snap a few photos before turning back; the scenery wasn't spectacular with visibility at about 100 yards. On the return trip, a momentary opening in the clouds treated us to a spectacular view of Broad's Fork Twin, O'Sullivan and Dromedary Peaks across Big Cottonwood Canyon. It was one of those visions you climb mountains for. Returning to our skis, we stripped the climbing skins and readied ourselves for the anticipated descent. Dave and George latched down their heels, but the other three telemarked down through nine inches of creamy powder. The snow was so good that I nearly wished I had neglected the summit to ski all day. Altogether, it was a full day for a neophyte like me, but I'm very glad I decided to go.

Participants: George Westbrook, Will McCarvill, Peter Hansen, Jim Yehle, and leader Dave Smith.

ALTA TO DAYS FORK SKI TOUR

Sunday, December 22, 1991

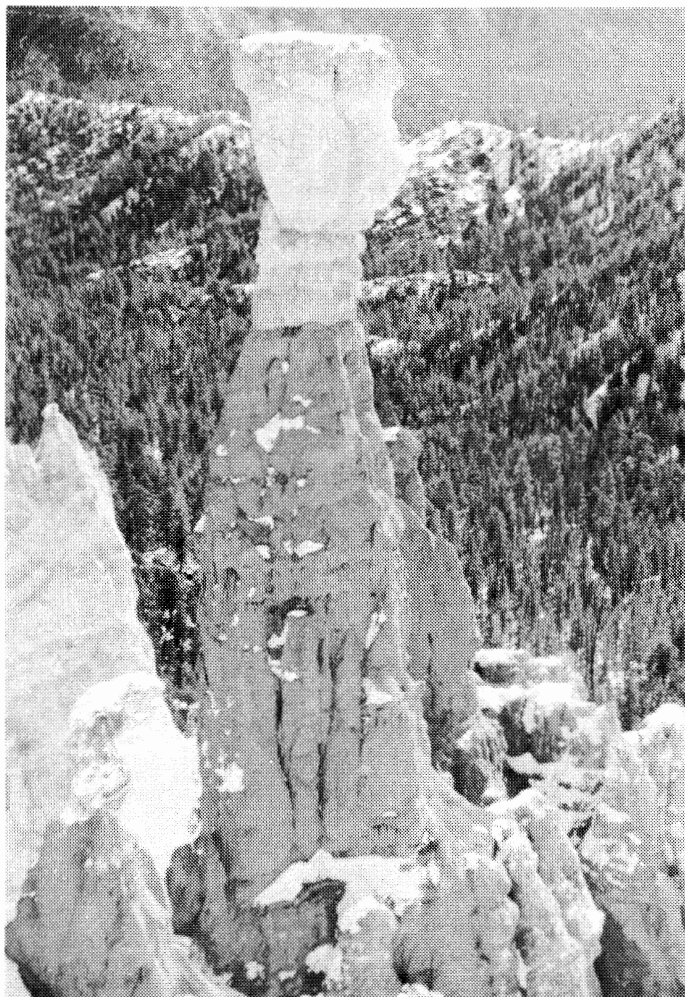
by Fred DuVall

Today started out in pretty much a normal manner. Up at 6:30AM to get packed and have some breakfast, and then pick up my skiing buddy Pete at 7:30AM and head towards Little Cottonwood Canyon. The early departure is required since Pete and I live in Ogden. We arrived at the parking area in the mouth of Little Cottonwood Canyon a few minutes early. There didn't appear to be any other back country skiers in the parking area and our challenge then became one of trying to decide, as people arrived, who was there for the WMC tour. We finally decided that the randomly scattered people standing around in their underwear with totally blank looks on their faces had to be the WMC tour participants. This theory was amazingly accurate. Our tour leader (George Westbrook) didn't show up, however he did send a very competent leader (Dave Smith) to conduct the tour. Dave's first task as leader was to change the name of the tour to the Brighton to Days Fork Ski Tour. In addition to renaming the tour, Dave also suggested that we follow the route as described by the changed name. Dave's rationale was that it made things easier in terms of spotting cars and shuttling people. However, this route is longer for the skiers. Everyone agreed on the new plan and we headed to the parking area at the mouth of Big Cottonwood to regroup and consolidate into two vehicles. Since there were six of us, this worked out very well. We spotted a vehicle at the Spruces campground parking area and headed up the canyon to Brighton.

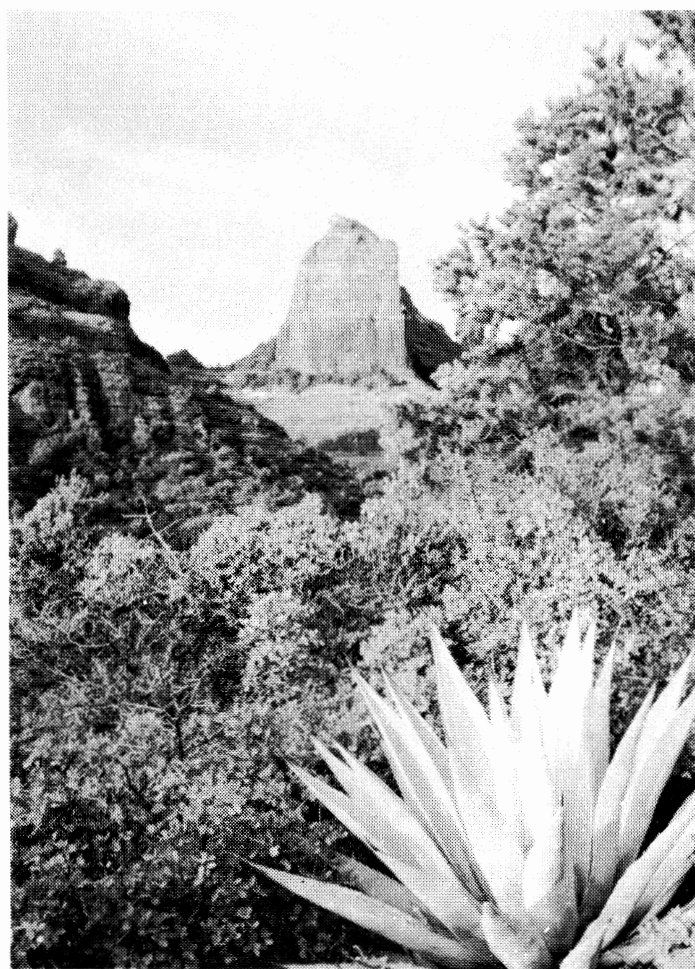
We parked our vehicle at the base of the Evergreen chair lift at the Brighton ski area. After several minutes of sorting out equipment, getting properly dressed, and installing ski skins, we were ready for departure. The climb up the ski runs next to the chair lift was quite easy. In a few minutes we were regrouping at the dam, then around the lake and headed south to Twin Lakes Pass. The weather was perfect with clear blue skies, sunshine and little to no wind. From Twin Lakes Pass, our route took us west along the ridge towards Mt. Superior. The view of Mt. Superior from Twin Lakes Pass is awe-inspiring. I had never seen it from this perspective before and it was most impressive. The weather continued to remain good as we made our way along the ridge. About halfway between Twin

Lakes Pass and Days Fork Canyon, we stopped to enjoy the view and have some lunch. After lunch we continued along the ridge towards Days Fork. As we approached Days Fork, we began to notice snow boarders hiking up to the ridge from Alta. This looked like a lot of work. These snow boarders were obviously desperate for some powder and my guess is that they were also planning to ski (board?) down Days Fork. After removing our ski skins and adding crash clothing, we began our ski descent down the upper cirque of Days Fork. The snow was in good condition with about 8-10 inches of powder on top of a hard base. It was skiable, however, it was very fast. The descent down Days Fork was enjoyable unless you got close to the author, who, on a number of occasions, was totally out of control and dangerous. The group consensus finally was that I continue the descent as the leader so that I could be seen clearly, and any damage inflicted would be on my own body.

This was an excellent tour. All participants appeared to have enjoyed themselves. The weather was great and the snow conditions were quite good considering how long it had been since we have had fresh snow. Dave did an excellent job as tour leader. He was always concerned about safety and each skier's condition as the tour progressed. Trip participants were: Dave Smith (leader), Fred DuVall (author), Pete Totman, Will McCarvill, Rob Rogalski, and Gary Gustafson.



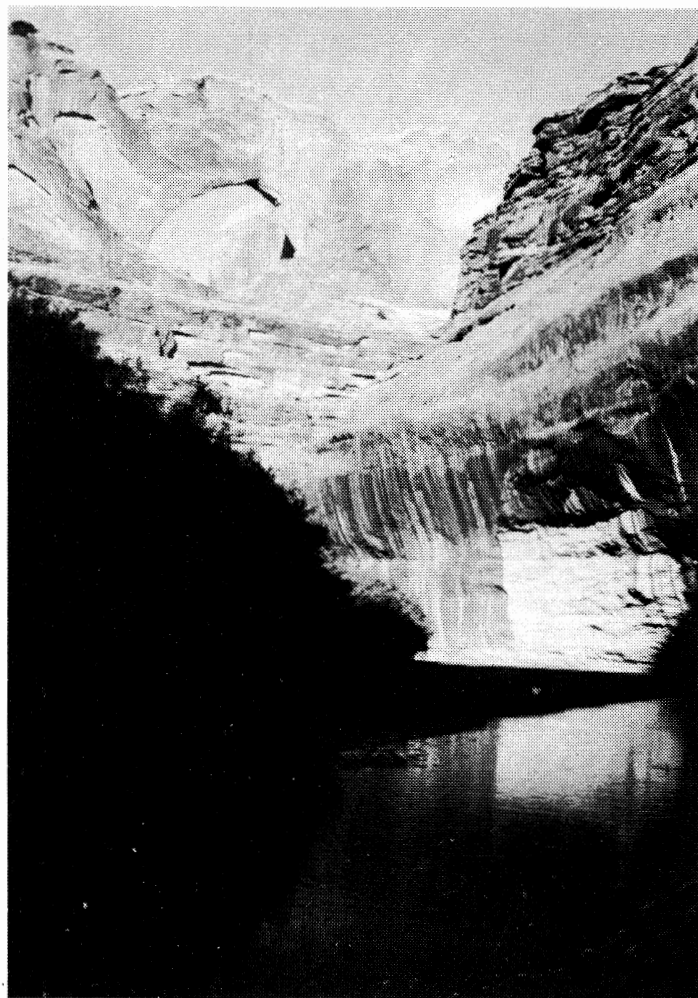
The Hunter, Bryce Canyon
March 1991
Photo By Leslie Mullins



Sedona, Arizona
Photo By Leslie Mullins



Raccoon Tracks
Coyote Gulch, October 1991
Photo by Leslie Mullins



Stevens Arch,
Coyote Gulch, October 1991
Photo by Leslie Mullins

CLASSIFIED ADS

AD POLICY

Members may place classified ads for used sports equipment free of charge. Other classified ads require a \$5.00 donation to the WMC for up to 20 words with \$.20 per word over 20. Words of 2 letters or less will not count as a word.

NOTICE!

Send your ad (with a check enclosed if it is not a used sports equipment ad) before the 13th of the month to Sue DeVall, 11730 South 700 West, Sandy UT 84070 or call Sue at 572-3294 for information.

The *Rambler* cannot accept any ad that is inconsistent with the purposes of the WMC, or that offends the sensibilities of club members.

USED EQUIPMENT

MOVING SALE SPECIALS!!! SMALL CLIMBING SHOES, Boreal Fire, size 4 1/2 (women's 6), brand new, never used, \$50. **PRECOR MODEL 612 ROWING MACHINE**, hardly used, \$50. **OR Best Offer**. Call 467-8918 after 6PM.

THULE SKI RACK in great condition. Fits most small to mid-size cars. \$60 or best offer. Call Beth, 487-8479.

STAIR STEPPER EXERCISE MACHINE, \$150, cost \$300 new; **DOWNHILL SKI BOOTS**, Dolomite DS 252, size 10, \$30; **DOWNHILL SKIS**, 190 cm, Elan, Tyrolia 420 Bindings, \$75; **SKI POLES**, 130 cm, Scott, \$10; **SKI GOGGLES**, \$5. Call David at 776-8107, evenings.

SOLO WHITEWATER CANOE, Mohawk XL-13 with perception saddle, \$500; **WERNER CANOE PADDLE 58"**, \$50; **KASTLE TELEMAR SKIS** with Asolo 3pin binding, 200 cm, \$150; **FISCHER EUROPA SKIS** with Rottefella binding, 200 cm, \$150; **ASOLO SNOWPINE BOOT**, mens 9 1/2, \$100; **ASOLO SNOWFIELD BOOT**, mens 9, \$50; **MERRELL FLASHDANCE CLMBING SHOES**, mens 10, \$40; **NORTH FACE INTERNAL FRAME PACK**, about 4000 cu in, \$50. Call 322-4022.

PATAGONIA STORM SKI PANTS, size small-med, Brand new, never worn. Still in original wrap, \$100. Michael, 1-649-1774.

SAN MARCO MOUNTAINEERING BOOTS with insulated sole, size 7, \$100. Call Jane 944-8937.

KARHU 195 cm XCD. Double camber, metal edges, waxable. Riva cable bindings, \$150 without bindings, \$220 with bindings. Ask for Julie at REI or call 355-1835.

KASTLE TOUR RANDONNEE 180 cm SKIS with Silveretta 300 bindings. In good condition. Call Dave, 278-6515.

ASOLO SUMMIT DOUBLE TELEMAR BOOTS, size 8, \$250, call Mike, 487-6270.

ASOLO TELEMAR SKI BOOTS, 9 1/2 mens. NEW \$200, 566-9017.

DOWNHILL SKI BOOTS, NORDICA, MODEL 747, size 7 1/2-8 womens. Call 255-6953.

ASOLO SUMMIT TELEMAR DOUBLE BOOTS, womens 6-6 1/2. Price negotiable. Call Mary, 539- 1620.

WANTED

USED KAYAKS in good condition. Call 266-5929.

RACQUETBALL PARTNERS. If you're interested in palying during the day OR Mon or Tues evenings (Athletic ability is unimportant--having fun is!), then call Timothy, 261-8564.

WASATCH MOUNTAIN CLUB

Membership applicants must participate in at least two Club outdoor or service activities, verified by the signatures of approval from the activity leaders. Yearly dues are \$25.00 single, \$35.00 couple. A \$5.00 initiation/reinstatement fee is charged.

1991-92 GOVERNING BOARD

President	Wick Miller	1-649-1790
Secretary	Leslie Giddings	583-4271
Treasurer	Louise Rausch	328-1290
Membership	Julie Ann Jones	278-4753
Boating	Randy Klein	774-6239
Conservation	John Veranth	278-5826
	Marc Hutchinson	355-3227
Entertainment	Bill Loggins	596-0597
Hiking	Mike Treshow	582-0803
Lodge	Vince Desimone	1-649-6805
	Kathy Klein (rentals)	272-8059
Mountaineering	Steve Walker	466-7032
Publications	Magdaline Quinlan	467-8918
	Leslie Mullins	363-0560
Ski Touring	Norm Fish	964-6155
Information	Barbara Jacobsen	943-3715
	Aaron Jones	467-3532

COORDINATORS

Bicycling	Rich Gregersen	467-6247
	Nance Randall	546-3917
Canoeing	Carol and Del Wiens	272-3182
Kayaking	Janis Huber	486-2345
Sailing	Vince Desimone	1-649-6805
Rafting	Liza Poole	547-9400
Boating Instruction:	Neal Reiland	355-1526
Boating Equipment:	Jeff Barrell	278-3510
Volleyball	Doug Stewart	269-1833
Scuba	Bob Scherer	967-0218

TRUSTEES

Milt Hollander	Term expires 1992
Karen Caldwell	Term expires 1993
Dale Green	Term expires 1994
Alexis Kelner	Term expires 1995
O'Dell Petersen	Trustee Emeritus

31

WASATCH MOUNTAIN CLUB
888 SOUTH 200 EAST, SUITE 111
SALT LAKE CITY, UT 84111

IN CASE OF EMERGENCY PLEASE NOTIFY
THE SALT LAKE COUNTY
SHERIFF'S OFFICE AT:

535-5855

OR THE APPROPRIATE EMERGENCY
AGENCY IN YOUR LOCATION.

AVALANCHE HOTLINE

801-364-1581

2/92

SECOND CLASS
POSTAGE PAID
SALT LAKE CITY, UT
NO. 053410